



DE VALK
YACHT BROKERS



HUNTER 38



DE VALK
YACHT BROKERS

HUNTER 38

BROKER'S COMMENTS

This Hunter 38 has for onboard comfort, thermal, sound, and vibration insulation were installed, along with double-glazed portholes, allowing comfortable operation in both cold and hot climates. The yacht is equipped with air conditioning, four-zone electric heating, and a Webasto heating system. Approximately €70,000 has been invested in upgrades and improvements over the years. Until 2022 she was used in a freshwater lake only during summers, then relocated to the Adriatic Sea and has since cruised the Adriatic and Mediterranean. A really well-maintained Hunter 38.

Jörg Hellmich

SPECIFICATIONS

Dimensions	11.58 x 3.93 x 1.52 (m)	Builder	Hunter Marine
Built	2005	Cabins	2
Material	GRP	Berths	6
Engine(s)	1 x Yanmar 3JH4E diesel	Hp/Kw	40.00 (hp), 29.44 (kw)
Asking price	€ 94.000 (VAT Not paid)	Lying	at sales office

CONTACT

Sales office	De Valk Almeria	Telephone	+34 950 497 825
Address	Puerto Deportivo, Darsena de la Batea 42 04711 Almerimar ES	E-mail	almeria@devalk.nl

DISCLAIMER

These particulars are given in good faith as supplied but cannot be guaranteed.



GENERAL

Model	HUNTER 38
Type	sailing yacht
LOA (m)	11,58
LWL (m)	10,57
Beam (m)	3,93
Draft (m)	1,52
Air draft (m)	18,50
Headroom (m)	1,98
Year built	2005
Builder	Hunter Marine
Country	U.S.A.
Designer	Glenn Henderson
Displacement (t)	8,38
Ballast (tonnes)	cast iron and lead 3,041
Gross tonnage	22
CE norm	A
Hull material	GRP
Hull colour	white
Hull shape	round-bilged
Keel type	fin keel with bulb Shallow version
Superstructure material	GRP
Deck material	GRP
Deck finish	non-skid moulded in
Superstructure deck finish	non-skid moulded in
Cockpit deck finish	synthetic teak
Antifouling (year)	2026
Dorades	yes
Window frame	aluminium
Window material	polycarbonate
Deckhatch	yes



Portholes	aluminium
Insulation	foam plates
Fuel tank (litre)	polyethylene 135
Fuel tank 2 (litre)	polyethylene 105
Level indicator (fuel tank)	yes
Freshwater tank (litre)	polyethylene 282 (with osmosis filters)
Level indicator (freshwater)	yes
Blackwater tank (litre)	polyethylene 135
Level indicator (blackwater)	yes
Blackwater tank extraction	deck extraction + pump
Wheel steering	rack & pinion Foldable Lewmar wheel
Emergency tiller	yes
More info on hull	In perfect conditions (fresh water lake until 2022)
Extra info	Add. ambient lighting

ACCOMMODATION

Cabins	2
Berths	6
Interior	American maple
Layout	2 cabin version
Floor	wood With insulation
Saloon	yes
Headroom saloon (m)	1,95
Heating	diesel ducted hot air Webasto AirTop 3500
Heating 2	electric 220V 4 zones
Air-conditioning	reverse cycle airco Cruisair SXR 12C (12,000 BTU)
Chart table	yes
Aft Cabin	yes
Convertible berth	In saloon
Galley	L-shape
Countertop	granite Artificial



HUNTER 38

Sink	stainless steel Double
Cooker	calor gas Force 10 (2 burner)
Oven	Force 10
Extractor	Franke
Gas alarm	yes
Microwave	Tappan
Fridge	Nova Kool NKF-049
Freezer	yes
Hot water system	220V + engine SS Boiler (22L.)
Water pressure system	electrical (20L- SS pressure accumulator)
Hot water tap	yes
Coffee maker	yes
Crockery	yes
Waste compactor	Waste disposer installed in galley sink
Owners cabin	double bed Aft
Bed length (m)	2,05 x 1,55 (new mattress)
Wardrobe	hanging and shelves Add. cabinets, shelving, storage
Toilet	shared
Toilet system	vacuum (sea & fresh water option)
Wash basin	in the bathroom Ocean Technologies
Shower	shared
Guest cabin 1	v-bed FW
Bed length (m)	1,95 (new mattress)
Wardrobe	hanging and shelves
Washing machine	Daewoo
Extra info	All lights in LED
Extra info	Multiple USB & USB-C charging points

MACHINERY

No of engines	1
Make	Yanmar



HUNTER 38

Type	3JH4E
HP	40
kW	29.44
Fuel	diesel
Maximum speed (kn)	8
Cruising speed (kn)	5
Consumption (l/hr)	1,8
Range (nm)	600
Engine cooling system	freshwater heat exchanger
Drive	shaft
Shaft seal	yes
Engine controls	bowden cable
Gearbox	mechanical KM35P
Bowthruster	electric Lewmar 3kW
Exhaust	watercooled
Propeller type	Variprop
Propeller blades	3
Propeller shaft material	stainless steel
Shaft lubrication	water
Manual bilge pump	yes
Electric bilge pump	Rule 1500
Start battery	1 x 12V / 60 Ah Exide AGM
Service battery	2 x 12V / 210 Ah Exide GEL
Battery monitor	BMV-712 Smart
Battery charger	Promariner 30A
Inverter	Victron Phoenix 12/250
Battery charger/inverter	Victron Multiplus 12/3000/120A
Solar panel	Altek 4 x 170W
Diode battery combiners	yes
Shorepower	with cable 230V
Insulation transformer	Prosafe 3,8 kVA
Extra info	Bosch 180A Alternator



Extra info

Engine full service in 02.2026

Extra info

(bi-directional oil pump for easy oil change)

NAVIGATION

Compass

Danforth

Electric compass

Raymarine Hybrid Touch

Depth sounder

Raymarine ST40

Log

Raymarine ST40

Windset

Raymarine ST40

Repeater

Raymarine ST60 multi

VHF

Navicom RT-450 DSC

Autopilot

Raymarine ST6000+

Rudder angle indicator

Raymarine ST6000+

Plotter/GPS

Raymarine Hybrid Touch 9"

Radar/GPS/plotter

Raymarine Hybrid Touch 9"

Wifi antenna

Webboat 4G Plus with dual SIM cards

Electronic chart(s)

Navionics (Med. Sea)

Navigation lights

yes

Searchlight

yes

Loudhailer

Marco

EQUIPMENT

Sprayhood

yes

Cockpit cover

Full cockpit enclosure

Bimini

yes

Cockpit cushions

yes

Cockpit table

Custom console box for plotter & controls

Bathing platform

yes

Boarding ladder

stainless steel

Gangway

yes

Deck shower

H & c



HUNTER 38

Anchor	Delta SS - 16 kg
Anchor chain	50 m (10mm) (space for 100m)
Chain counter	yes
Windlass	electrical Simpson Lawrence 1,2kW
Deck wash	yes
Dinghy	rigid inflatable Cala A300 (alu floor)
Outboard	Suzuki DF6A
Outboard support	yes
Davits	yes
Davits controls	manual
Deck crane	yes
Sea railing	wire
Grab rail (superstructure)	stainless steel
Railing side opening gates	yes
Pushpit	yes
Pulpit	yes
Life raft	Needs service
Life raft (pers)	6
Lifejackets	yes
Lifebuoy	yes
Rope cutter	yes
Horn	electric Marco
Radar reflector	yes
Fenders	yes
Mooring lines	yes
Tools	yes
TV	Samsung 43" & Samsung 22"
Radio-cd player	Alpine
Speakers in salon	yes
Fire extinguisher	yes
Extinguisher in engine room	yes
Extra info	Bracket for outboard at transom (emergency engine use)



RIGGING

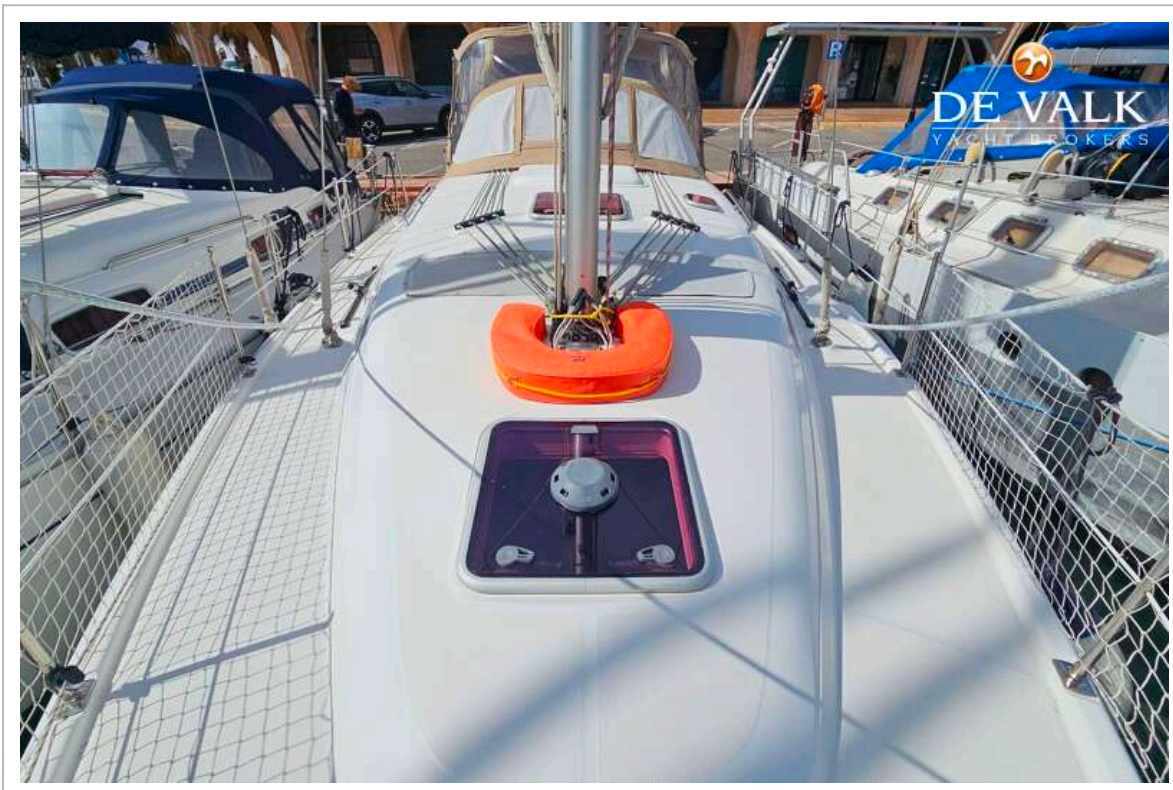
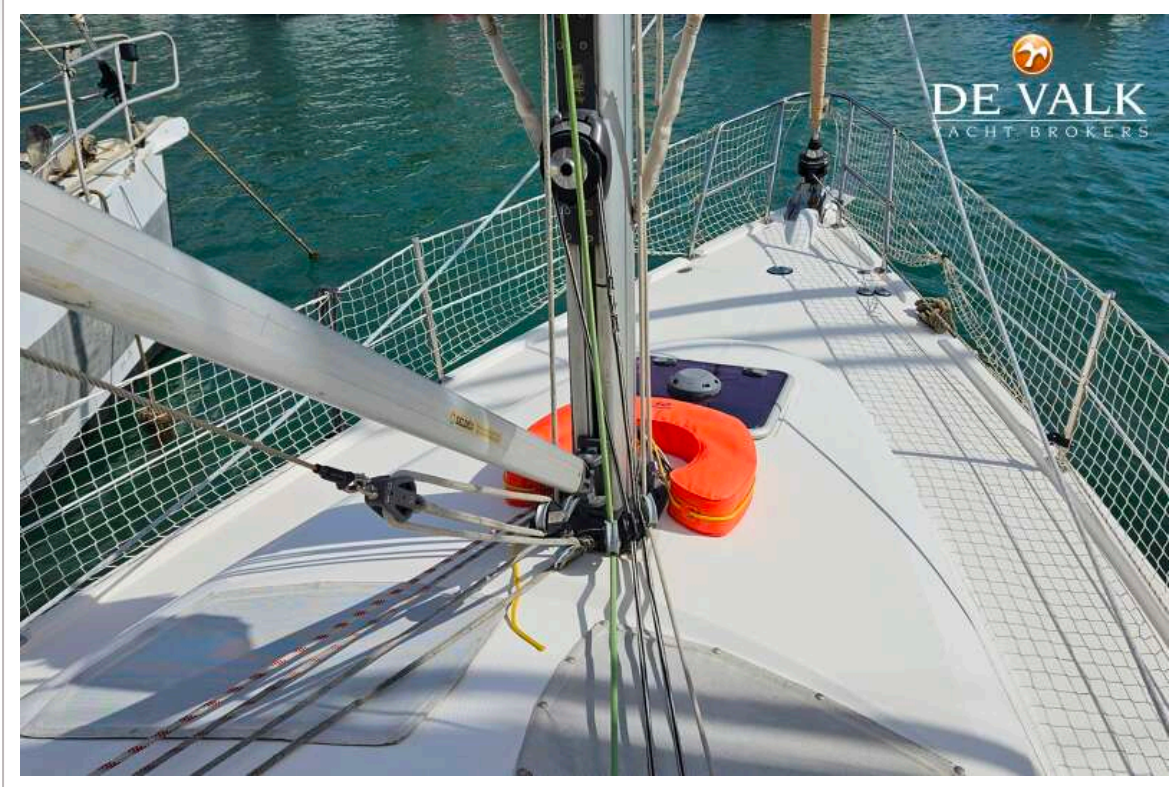
Rigging	sloop
Standing rigging	wire 1/19 Stainless B&R. (Bergström & Ridder)
Brand mast	Seldén
Material mast	aluminium
Spreaders	yes
Battcars	yes
Fully battened mainsail	UK Sailmakers with vertical battens (2022)
Genoa	UK Sailmakers (2022)
Genoa furler	Selden 200S
Gennaker	yes
Genoa staysail	yes
Boomvang	mechanical and tackle Selden
Primary sheet winch	yes
Secondary sheet winch	yes
Genoa sheetwinches	yes
Extra info	Running rigging in good conditions



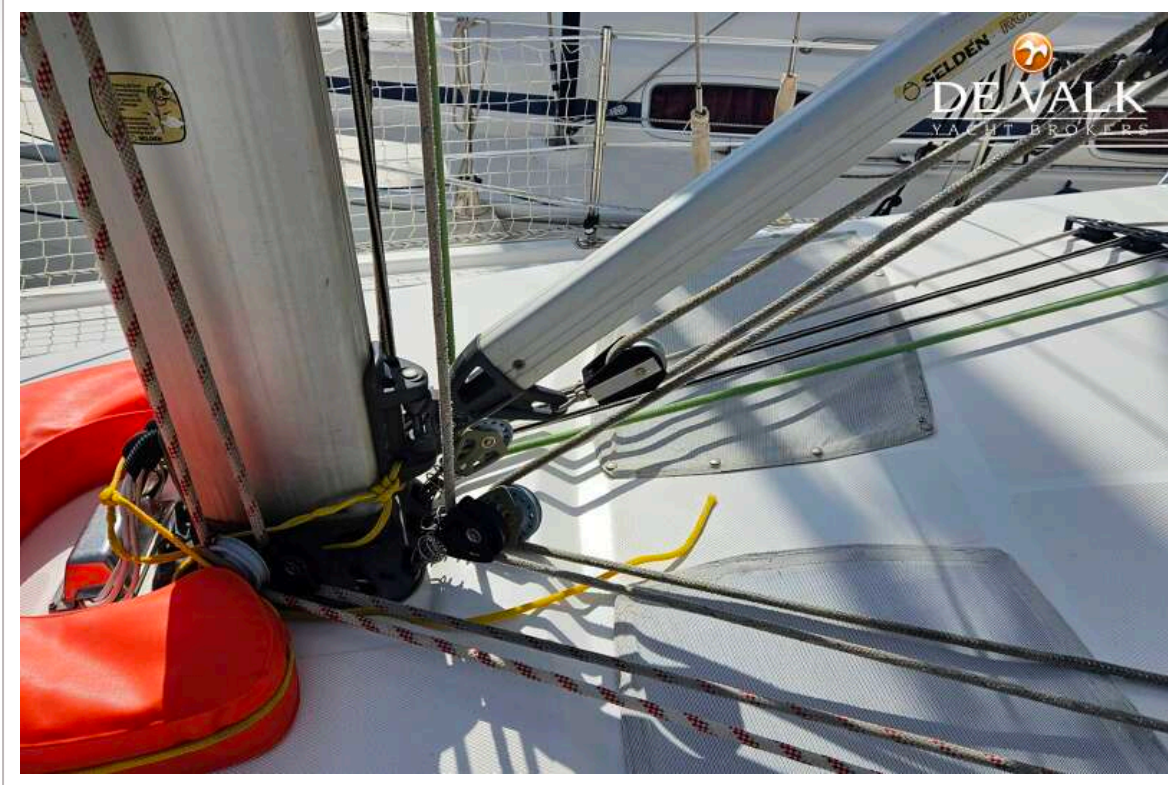
HUNTER 38



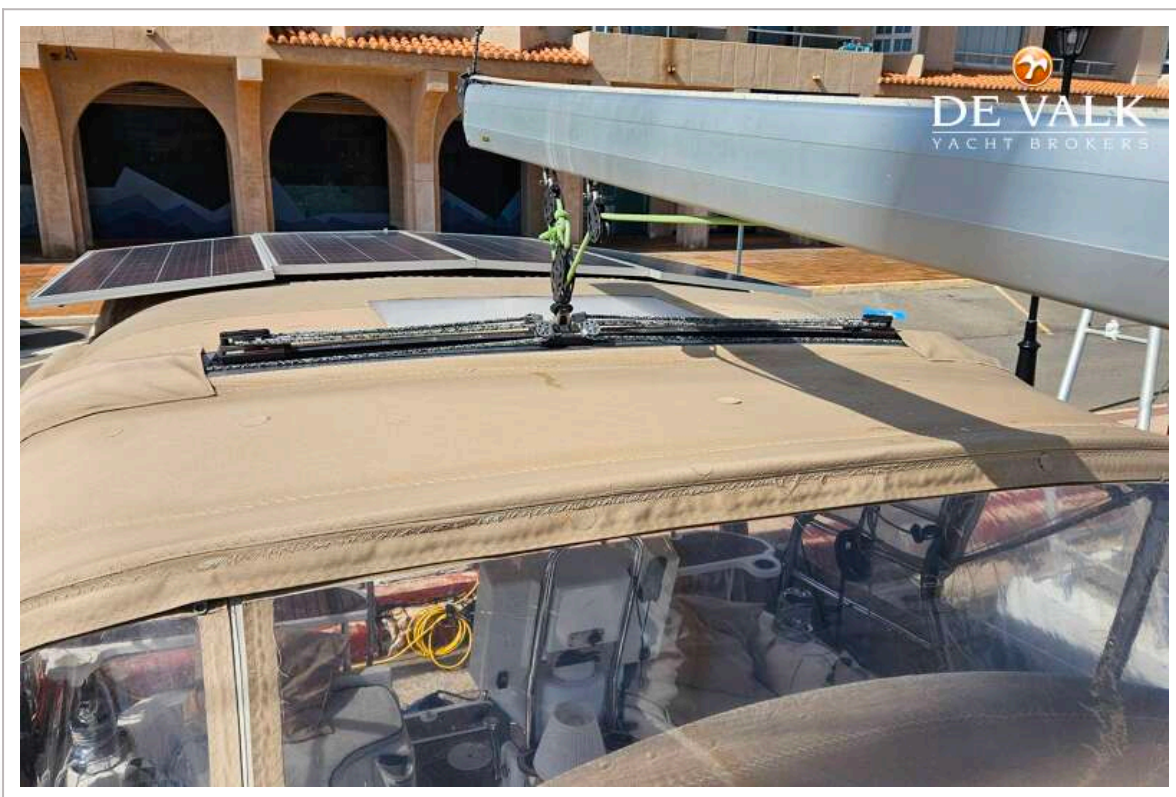
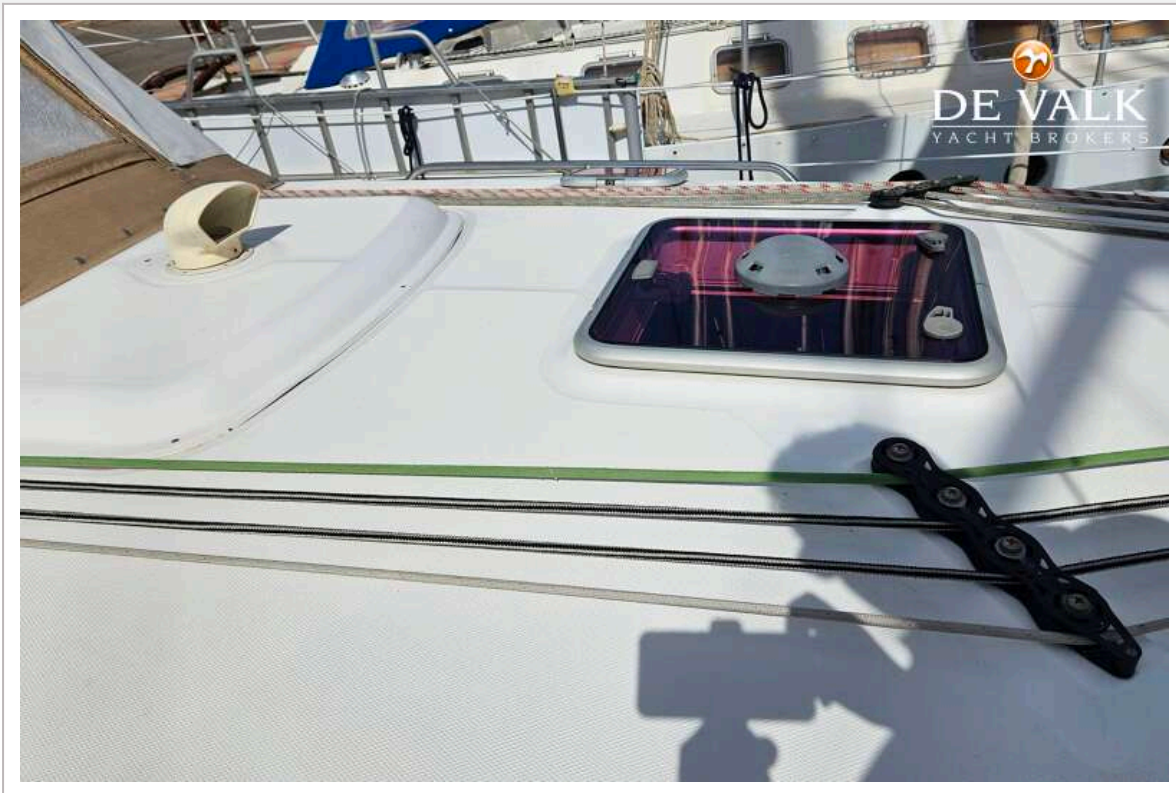
HUNTER 38



HUNTER 38



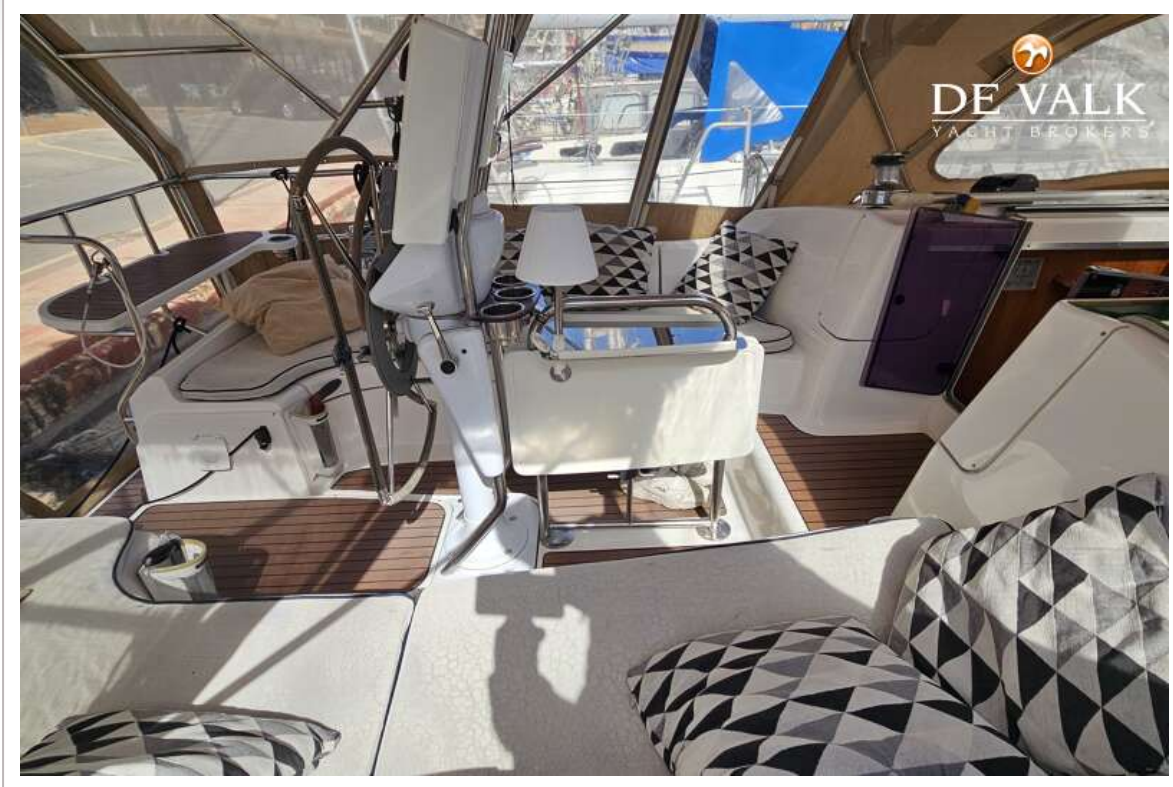
HUNTER 38



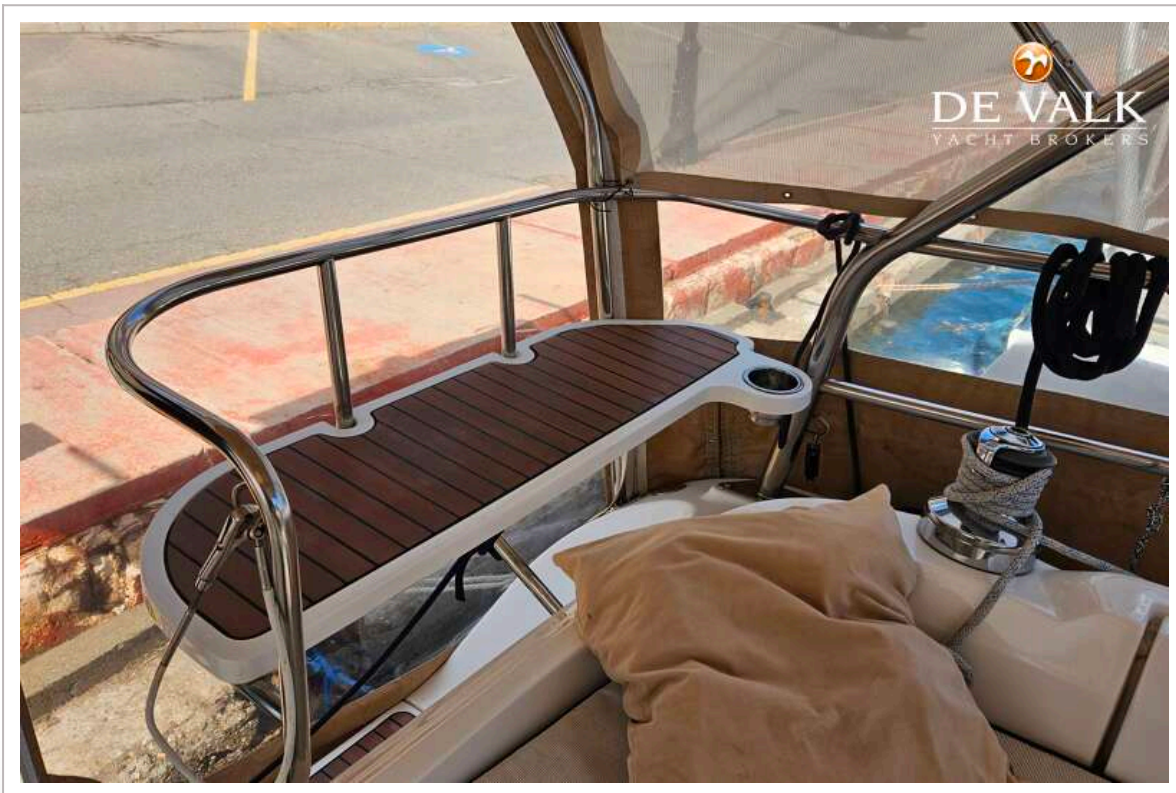
HUNTER 38

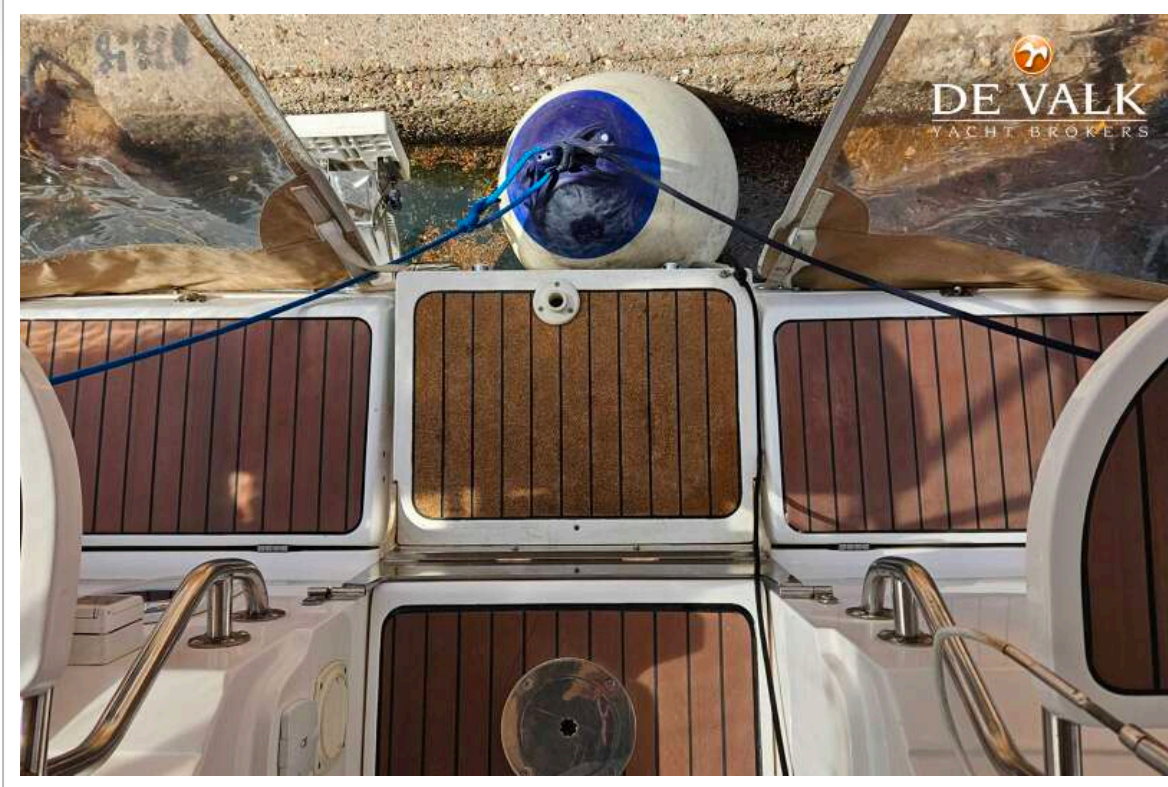


HUNTER 38



HUNTER 38





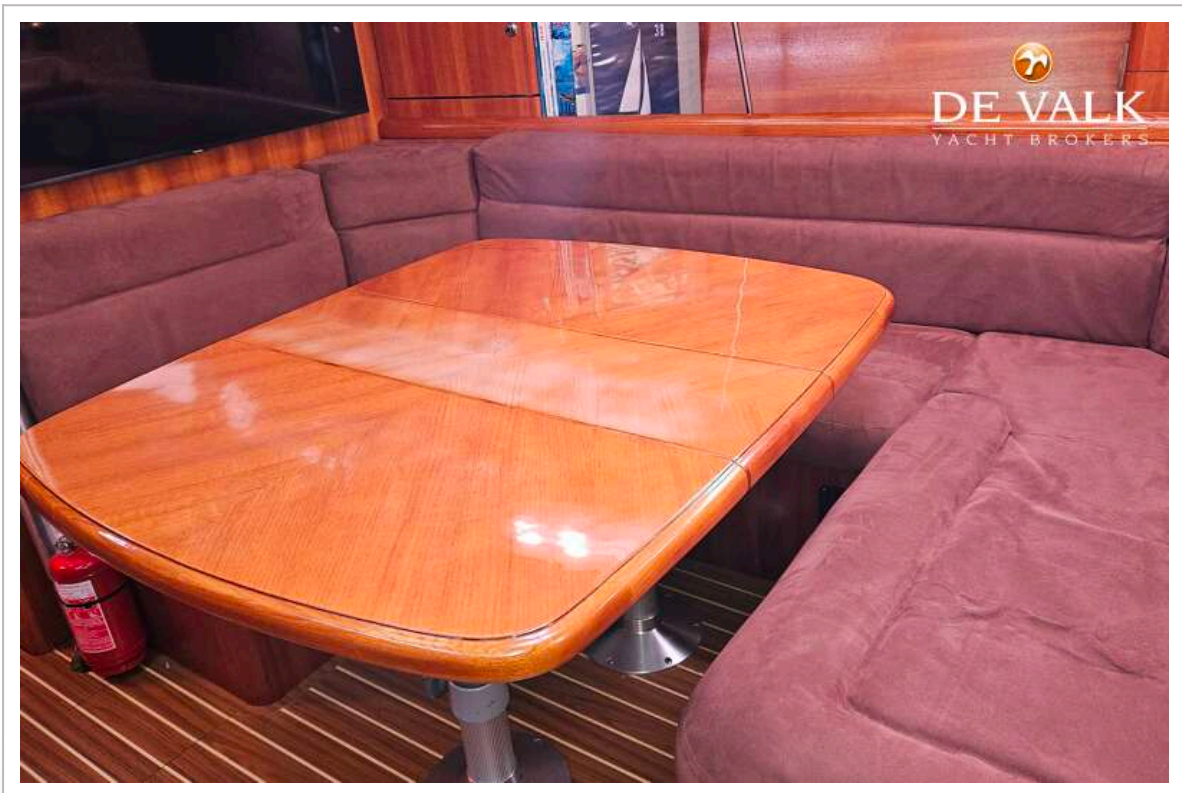
HUNTER 38



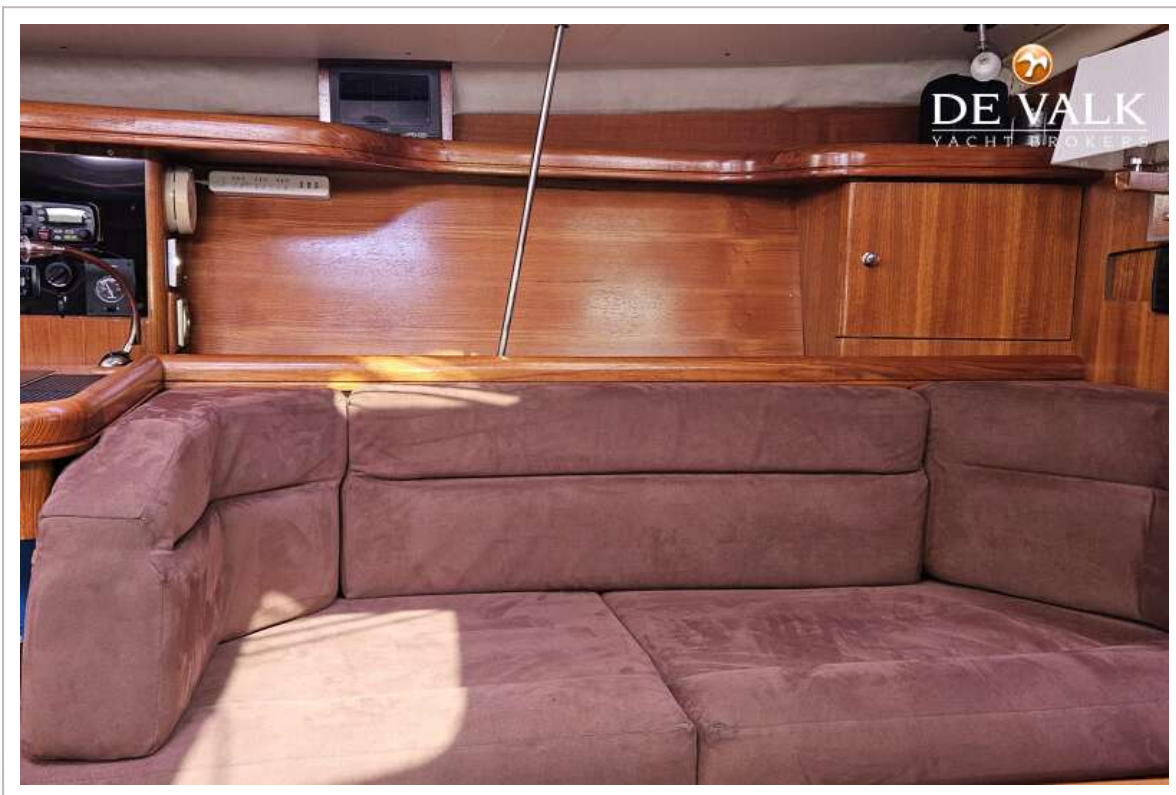
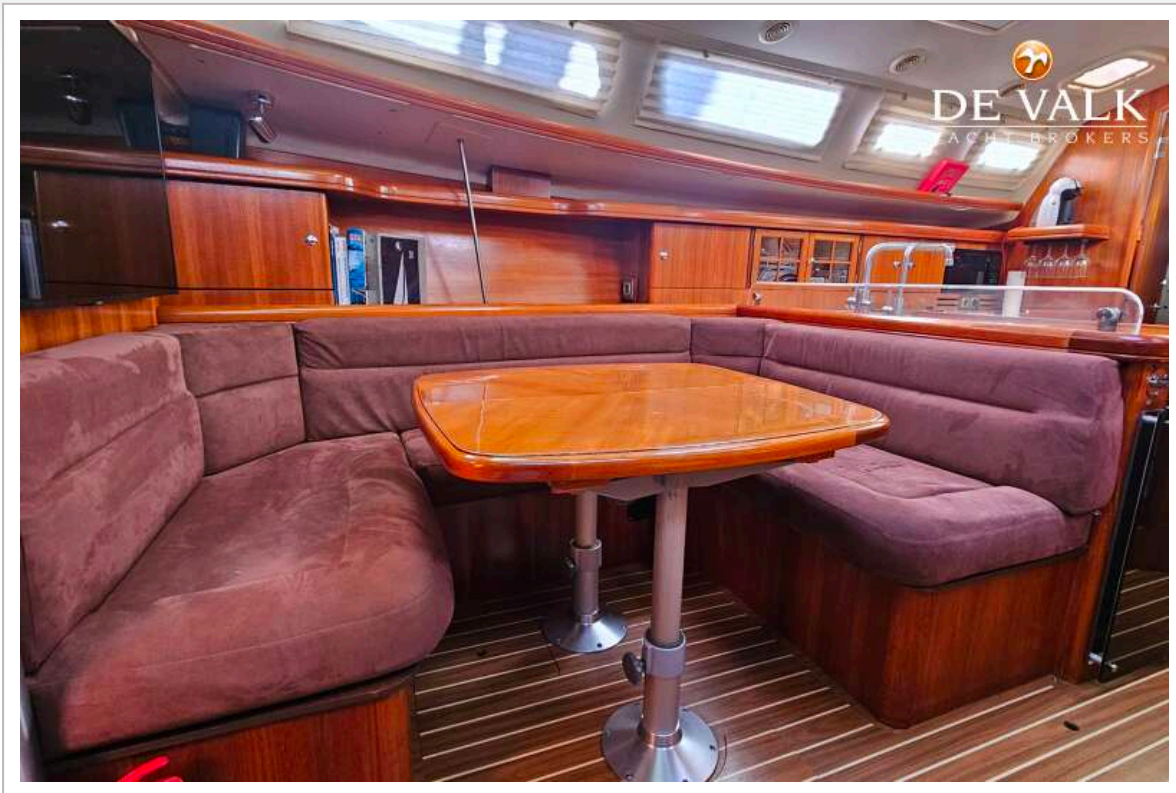
HUNTER 38



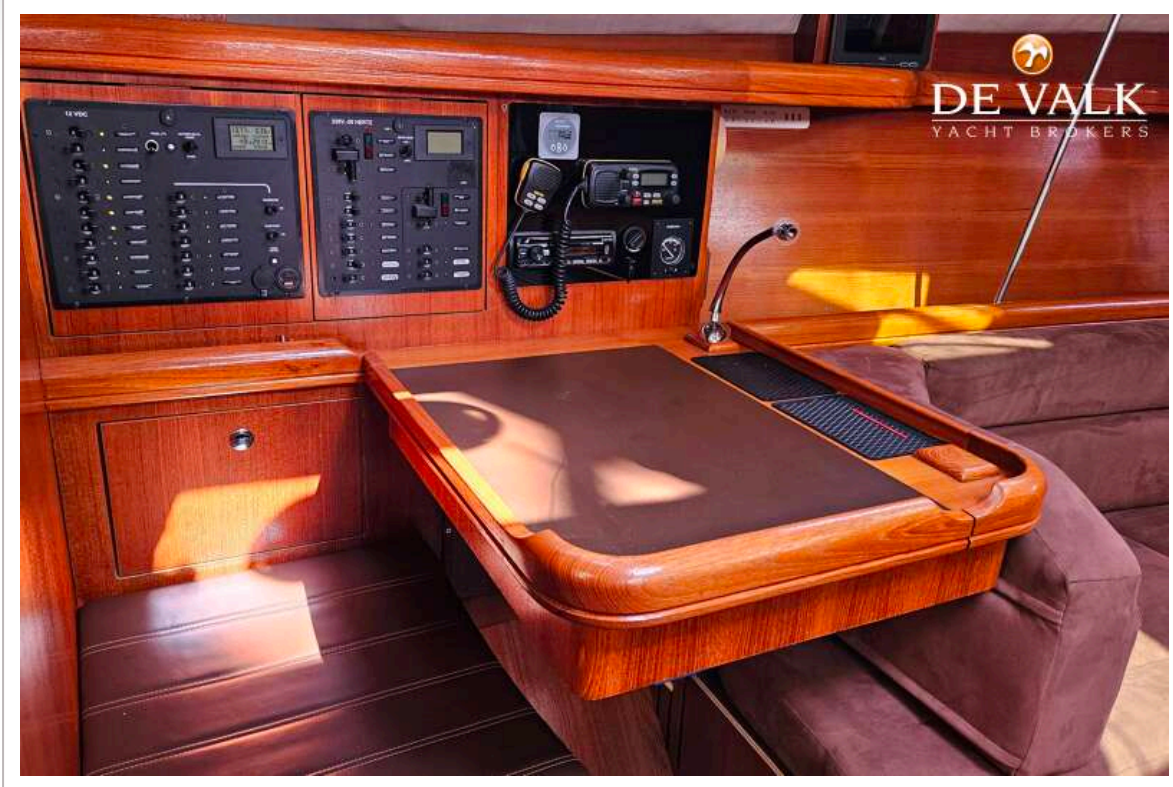
HUNTER 38



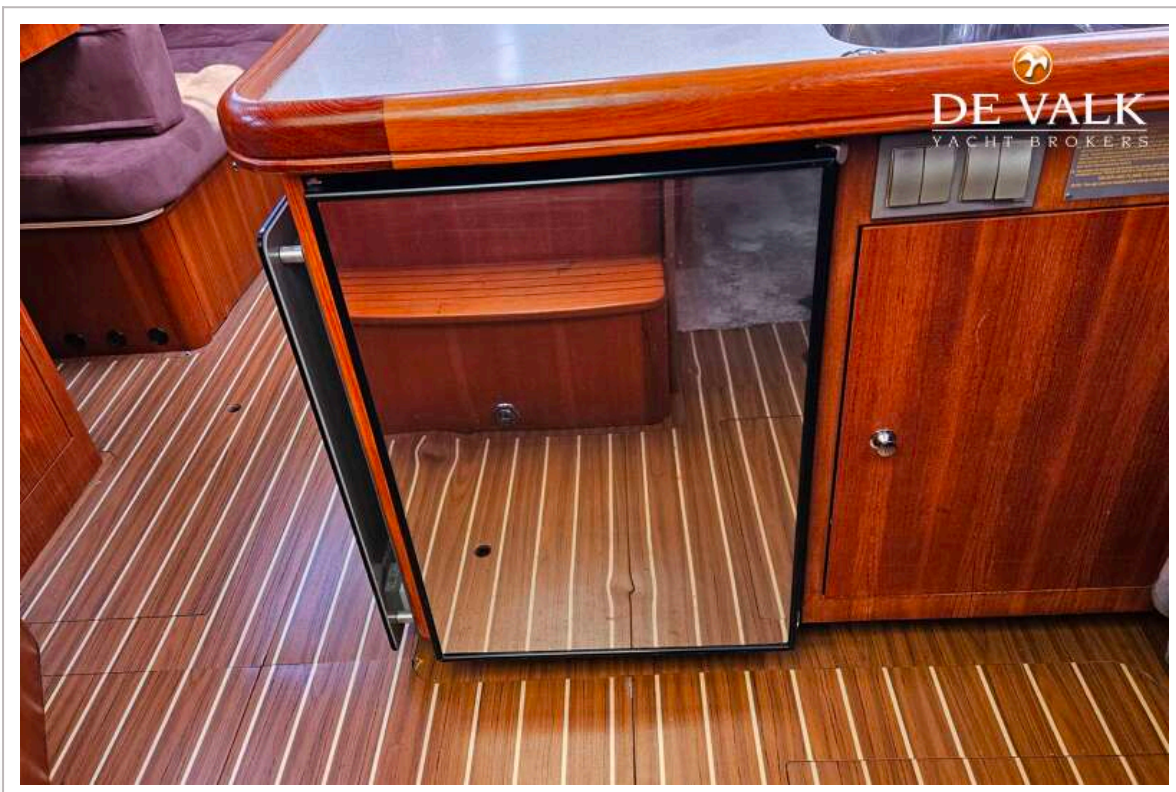
HUNTER 38



HUNTER 38



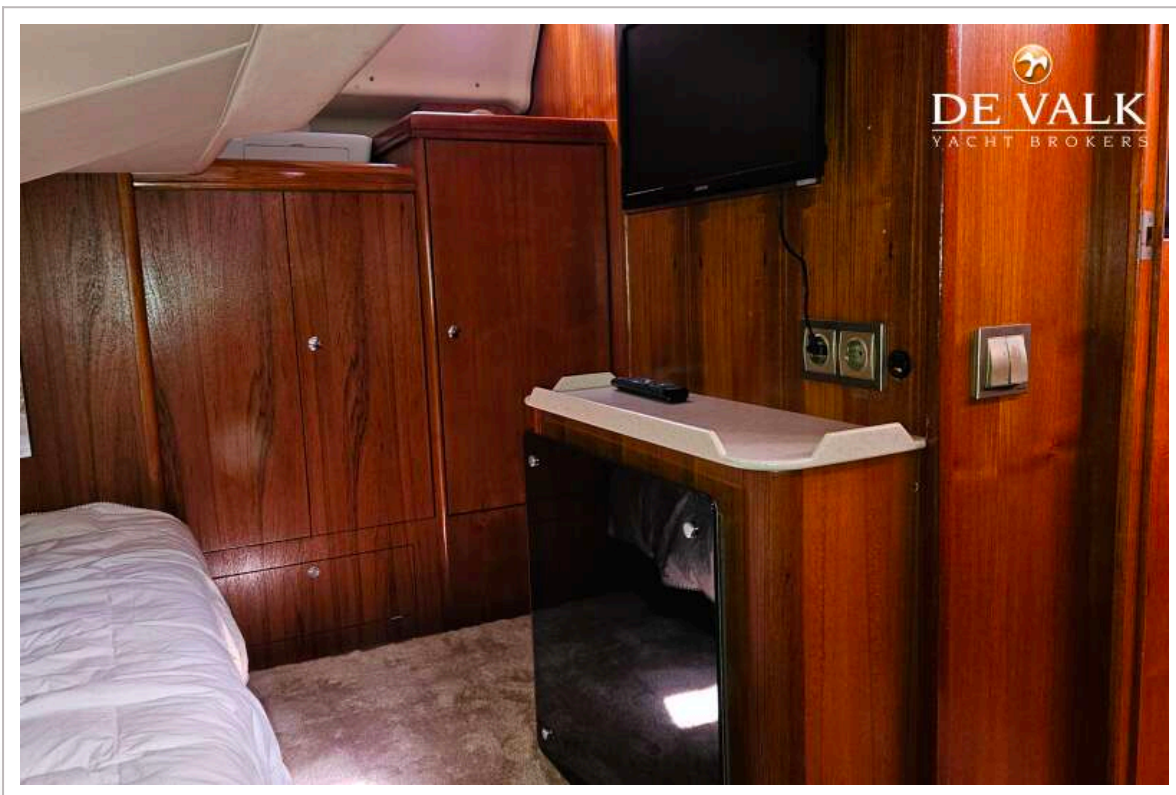
HUNTER 38



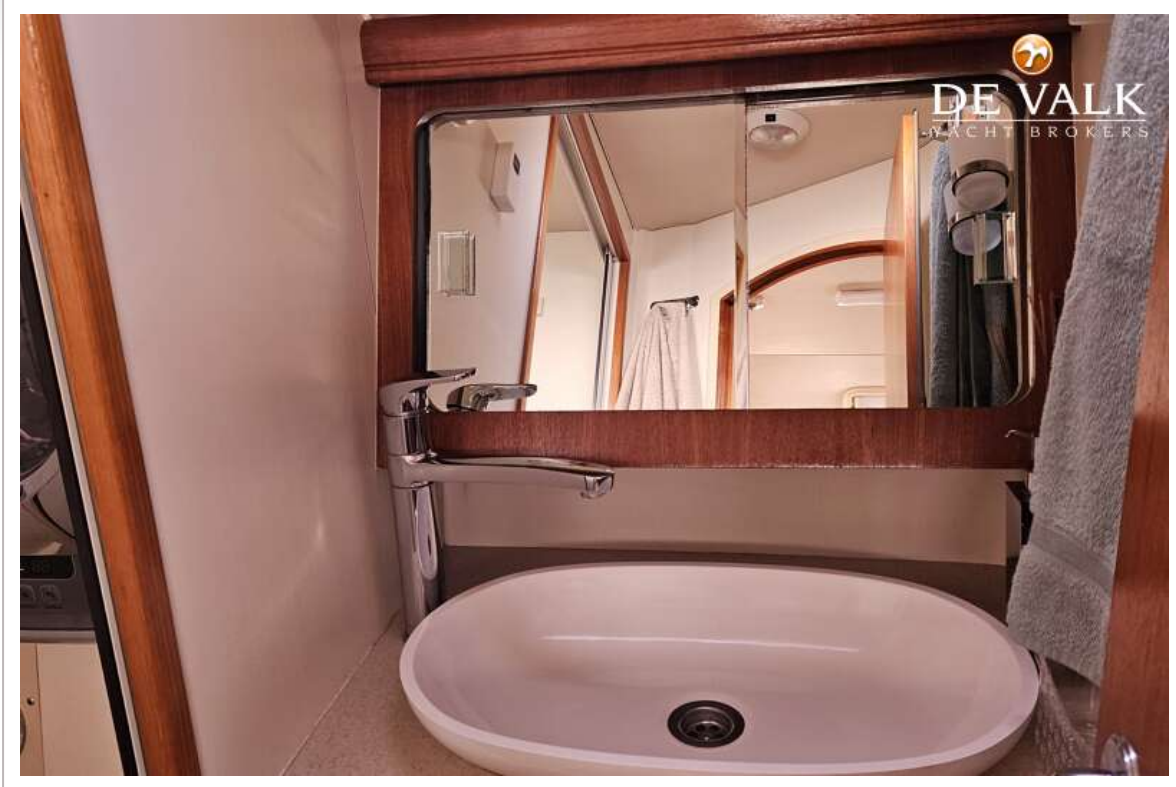
HUNTER 38



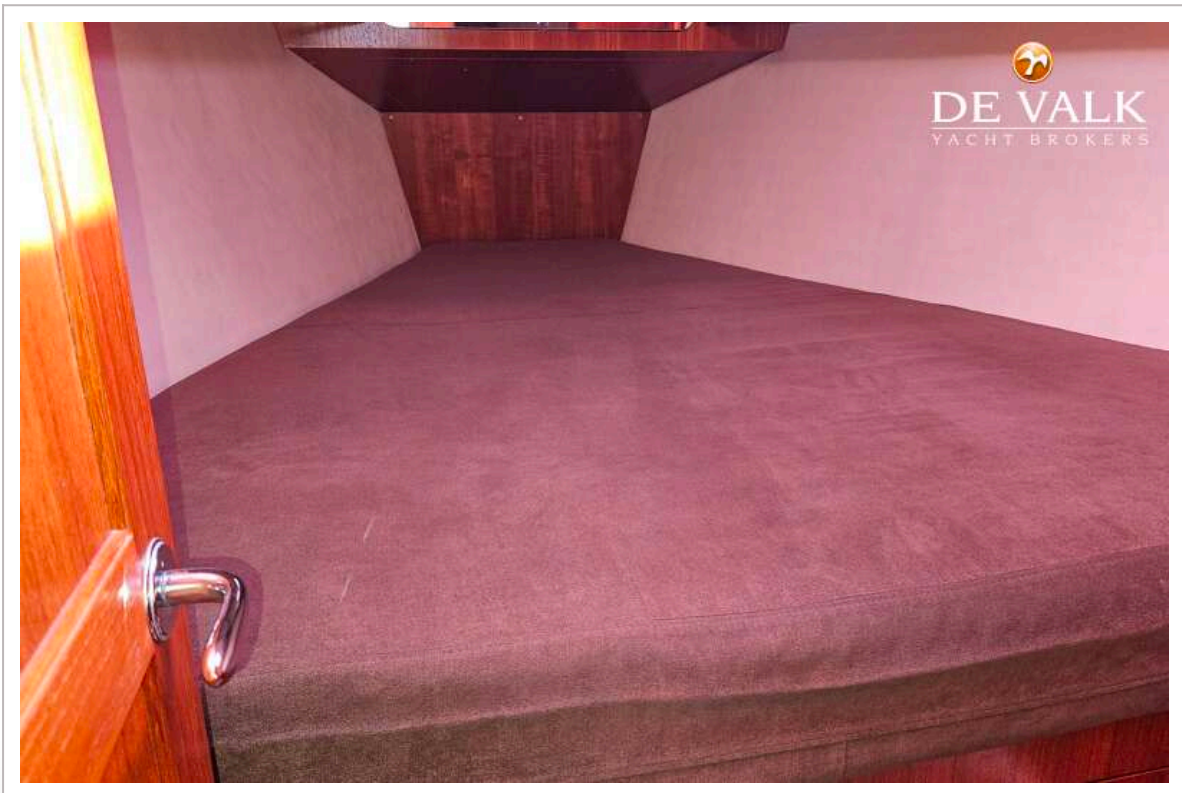
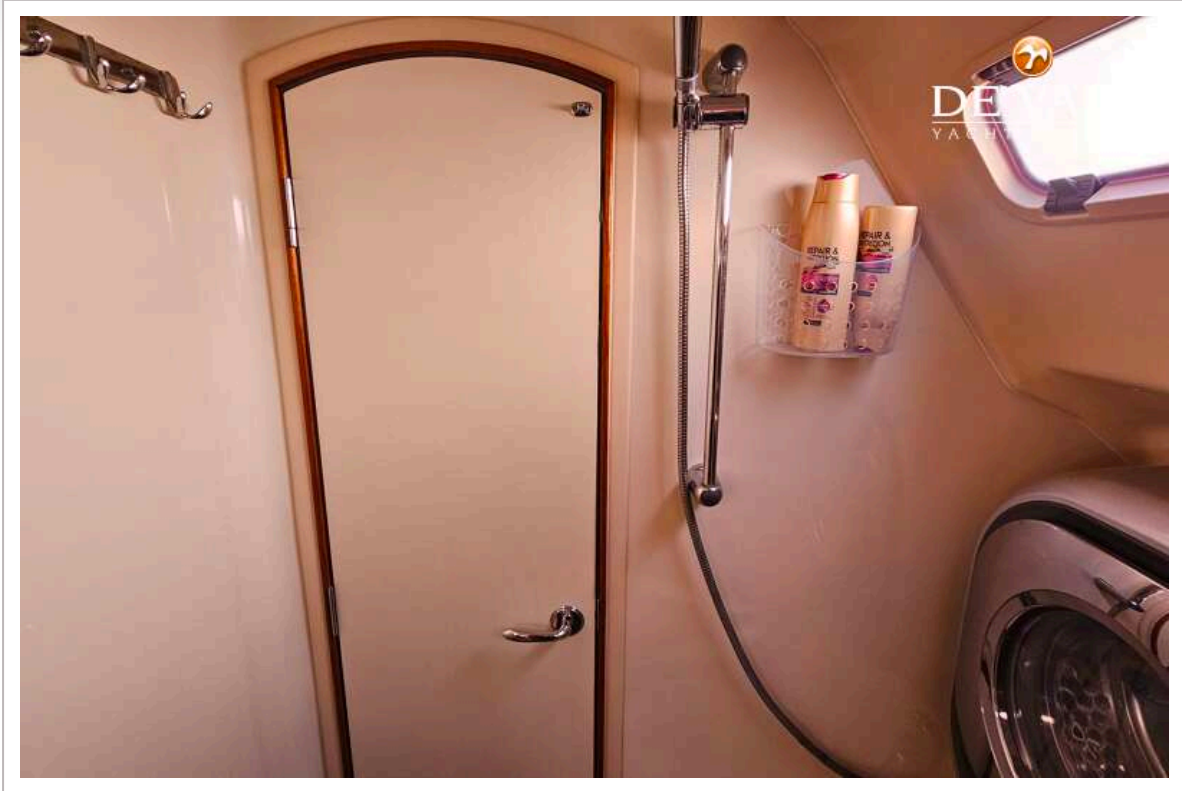
HUNTER 38



HUNTER 38



HUNTER 38



HUNTER 38

