



VAN DER HEIJDEN EXCLUSIVE DELUXE 2000

VAN DER HEIJDEN EXCLUSIVE DELUXE 2000

BROKER'S COMMENTS

Elegant, powerful, and designed for comfort: the Van der Heijden Exclusive Deluxe 2000 Sportbridge is a fully aluminum yacht with a timeless yet modern appearance. Two powerful Volvo Penta engines and a gyro stabilizer deliver impressive performance and excellent stability, both on inland and open waters. The luxurious layout with 3 cabins, 3 bathrooms, air conditioning, and floor heating ensures maximum comfort, while the spacious aft deck and flybridge invite relaxing moments on board. Experience the class of this top-tier yacht, now available for viewing by appointment.

Mark Hesselmans

SPECIFICATIONS

Dimensions	20.00 x 5.50 x 1.05 (m)	Builder	Van der Heijden Yachts
Built	2025	Cabins	3
Material	Aluminium	Berths	6
Engine(s)	2 x Volvo Penta D13-800 diesel	Hp/Kw	2 x 800.00 (hp), 588.80 (kw)
Asking price	€ 2.995.000 (VAT Not paid)	Lying	at sales office

CONTACT

Sales office	De Valk Loosdrecht B.V.	Telephone	+31 (0)35 582 90 30
Address	't Breukeleveense Meentje 6 1231LM Loosdrecht / Wijdmeren NL	E-mail	loosdrecht@devalk.nl

DISCLAIMER

These particulars are given in good faith as supplied but cannot be guaranteed.



VAN DER HEIJDEN EXCLUSIVE DELUXE 2000

GENERAL

Model	VAN DER HEIJDEN EXCLUSIVE DELUXE 2000
Type	motor yacht
LOA (m)	20,00
Beam (m)	5,50
Draft (m)	1,05
Year built	2025
Builder	Van der Heijden Yachts
Country	The Netherlands
Designer	Van der Heijden Yachts
Displacement (t)	33
CE norm	A
Hull material	aluminium
Hull colour	beige
Hull thickness (mm)	6
Hull shape	Fast Displacement Hull
Superstructure material	aluminium
Superstructure (mm)	5
Deck plate thickness (mm)	5
Deck material	aluminium
Deck finish	synthetic teak
Superstructure deck finish	synthetic teak
Cockpit deck finish	synthetic teak
Antifouling (year)	2025
Window material	tempered glass
Deckhatch	1x
Portholes	stainless steel
Flybridge	yes
Flybridge cockpit cover	yes
Radar arch	yes
Fuel tank (litre)	stainless steel 5100



Level indicator (fuel tank)	Integrated in Q screens
Freshwater tank (litre)	polyethylene 1000
Level indicator (freshwater)	Integrated in Q screens
Blackwater tank (litre)	polyethylene 400
Level indicator (blackwater)	Integrated in Q screens
Wheel steering	hydraulic
Inside helm position	yes
Flybridge helm position	yes

ACCOMMODATION

Cabins	3
Berths	6
Interior	nut
Layout	yes
Floor	wood
Aft deck	yes
Saloon	yes
Heating	central heating Kabola Ecoline KB40
Air-conditioning	single cycle airco Webasto BlueCool V-series
Dinette	yes
Sliding door to aft deck	yes
Galley	yes
Countertop	granite
Sink	stainless steel Gun metal
Cooker	induction Bosch 4-burner
Microwave/oven combi	Bosch
Fridge	Bosch
Freezer	Bosch
Hot water system	220V or central heating
Water pressure system	electrical
Dishwasher	Klarstein



VAN DER HEIJDEN EXCLUSIVE DELUXE 2000

Hot water tap	Quooker
Owners cabin	double bed
Bed length (m)	2 x 1,8
Wardrobe	hanging/drawers/shelves
Bathroom	en suite
Toilet	en suite
Toilet system	electric Planus
Wash basin	in the bathroom
Shower	en suite
Guest cabin 1	double bed
Bed length (m)	2 x 1,7
Wardrobe	shelves
Bathroom	en suite
Toilet	en suite
Toilet system	electric Planus
Wash basin	in the bathroom
Shower	en suite
Guest cabin 2	twin single
Wardrobe	shelves
Bathroom	en suite
Toilet	en suite
Toilet system	electric Planus
Wash basin	in the bathroom
Shower	en suite
Washing machine/dryer combi	Samsung
Flybridge	yes
Wet bar	On flybridge with fridge and sink.
Tender garage	yes

MACHINERY

No of engines	2
---------------	---



VAN DER HEIJDEN EXCLUSIVE DELUXE 2000

Make	Volvo Penta
Type	D13-800
HP	800
kW	588.80
Fuel	diesel
Maximum speed (kn)	27
Cruising speed (kn)	18
Engine hours	77
Engine cooling system	freshwater heat exchanger
Drive	shaft
Shaft seal	yes
Engine controls	electrical
Gearbox	hydraulic ZF 325-1A
Bowthruster	electric Sleipner
Sternthruster	electric Sleipner
Thrust bearing	Python Drive
Propeller type	fixed
Propeller blades	5
Propeller shaft material	stainless steel
Shaft lubrication	water
Electric bilge pump	yes
Bilge alarm	yes
Electrical installation	24V/220V
Generator	wet exhaust Kohler 18 KW generator
Running hours generator	11,6
Batteries	8 x 12V 210 AH
Generator battery	Optima Redtop 12V-50Ah with own Victron batterycharger
Battery monitor	Victron
Battery charger/inverter	Victron Quattro 24/8000/220
Shorepower	with cable
Insulation transformer	Victron 7000
Stabilizers	0-speed Gyro



Trimtabs	Volvo automatic trim tab system
Extra info	Consumption 10 kn +/- 18l/h 14kn +/- 60l/h 28 kn +/- 250 l/h

NAVIGATION

Electric compass	Integrated in Q display
Multi control display	2 x Q display 16"
Depth sounder/log	Integrated in Q display
VHF	Garmin
Autopilot	Garmin
Rudder angle indicator	Integrated in autopilot
Radar/GPS/plotter	Integrated in Q display
AIS transceiver	Simrad VSO43
Camera	yes
Navigation lights	yes

EQUIPMENT

Storm blinds	yes
Cockpit cover	yes
Cockpit cushions	yes
Cockpit table	yes
Cockpit chairs	yes
Bathing platform	Hydraulic swim platform
Deck shower	yes
Anchor	yes
Anchor chain	yes
Windlass	electrical Maxwell
Sea railing	stainless steel
Railing side opening gates	Both sides
Wiper	3x Exalto
Horn	electric
Fenders	yes



Mooring lines	yes
TV	Sony in saloon - TCL in ownerscabin
Radio	Fusion radio
Surround Sound System	Fusion
Cockpit speakers	yes
Speakers in salon	yes

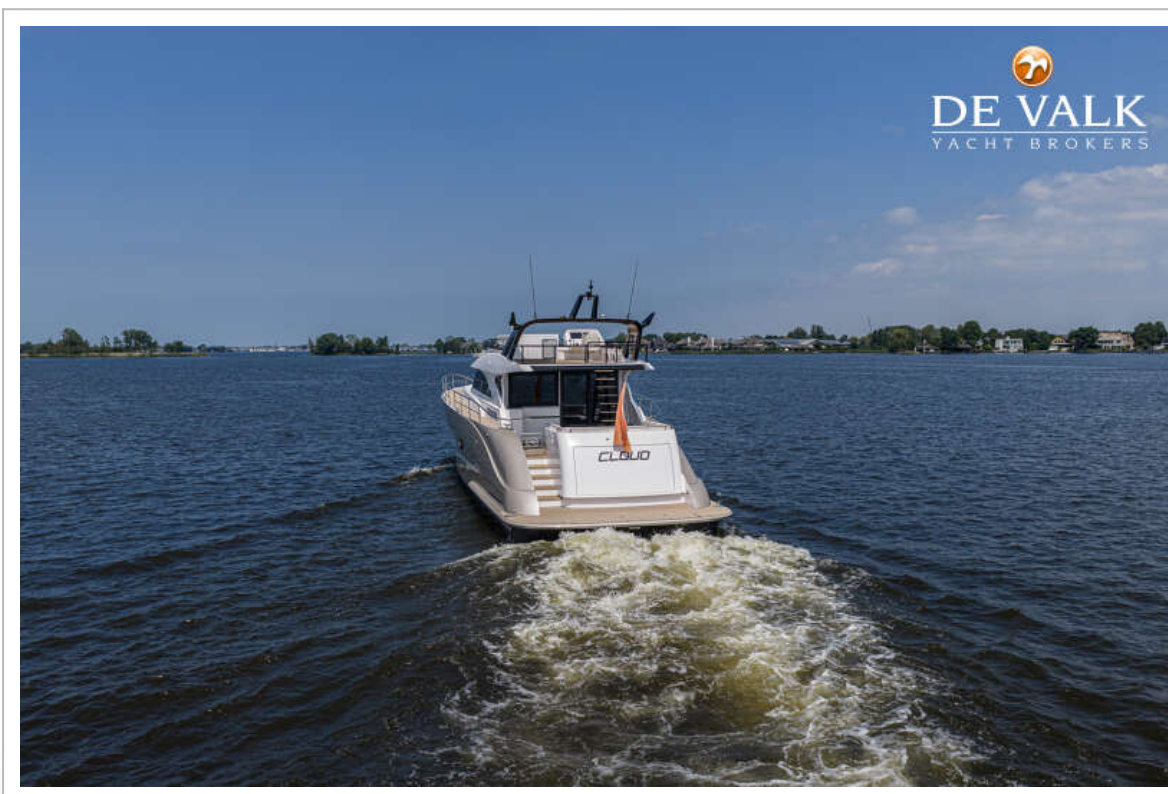








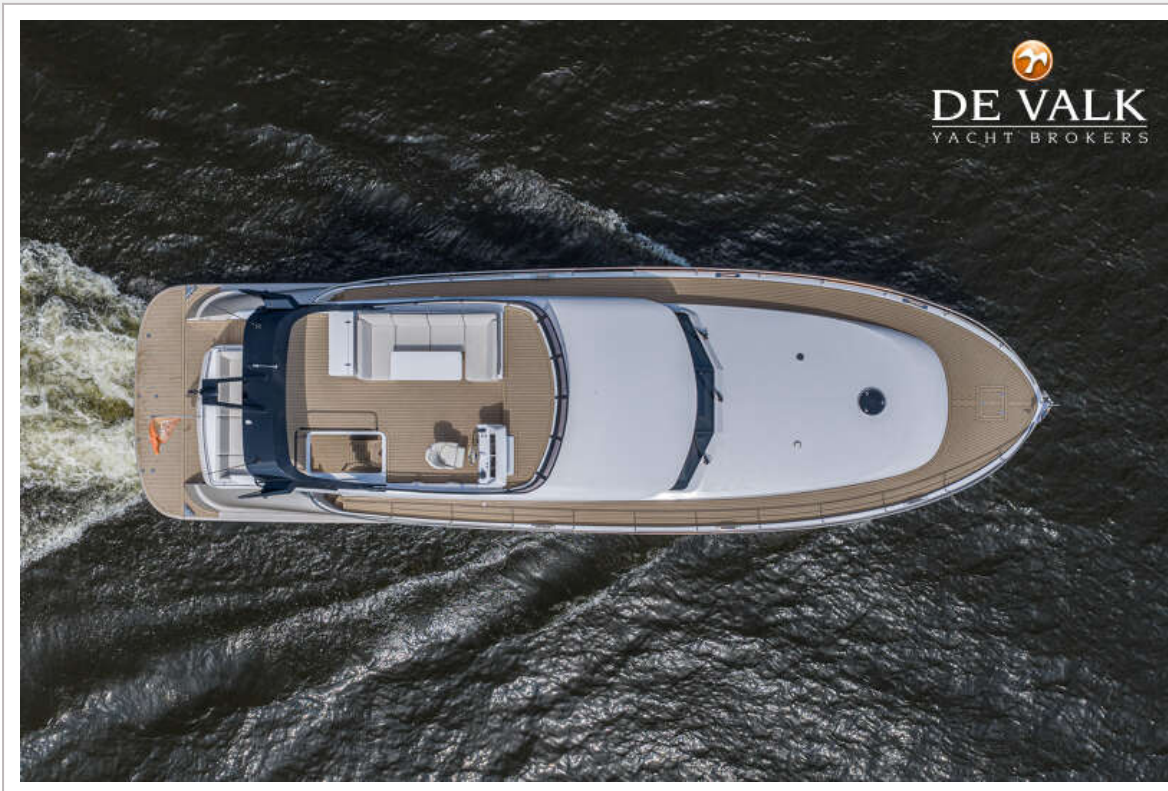




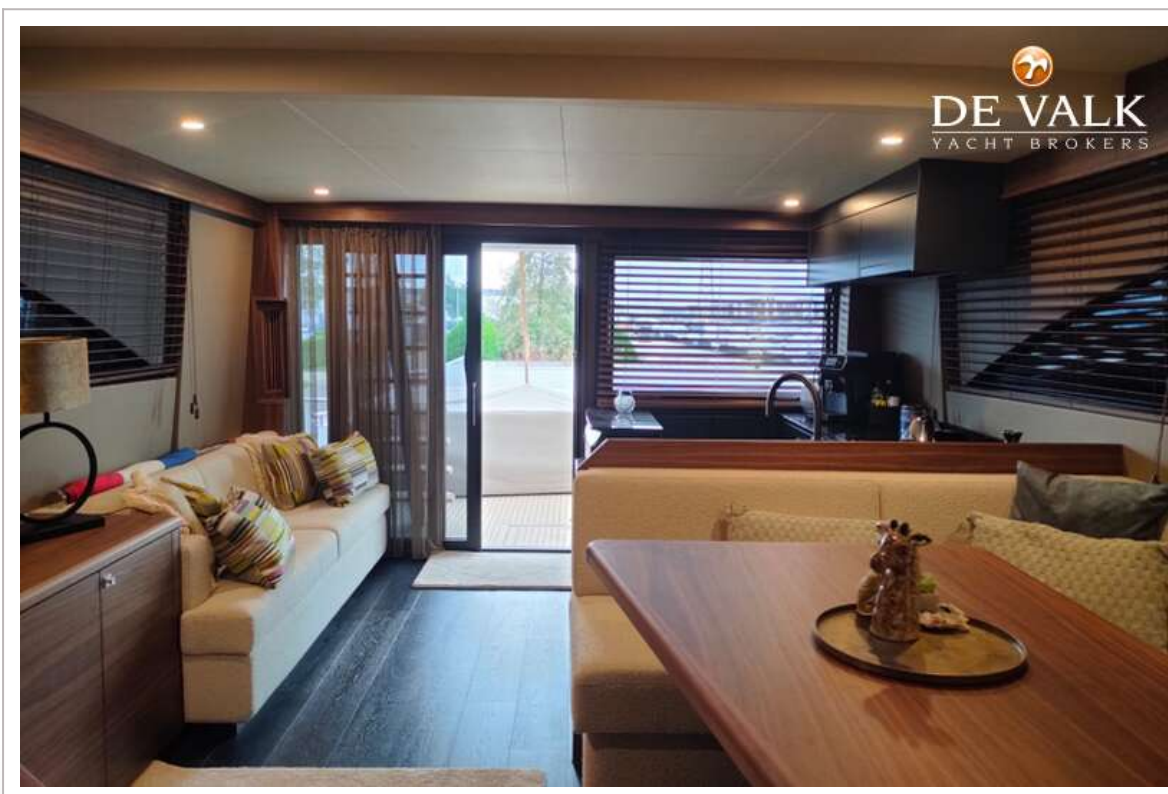
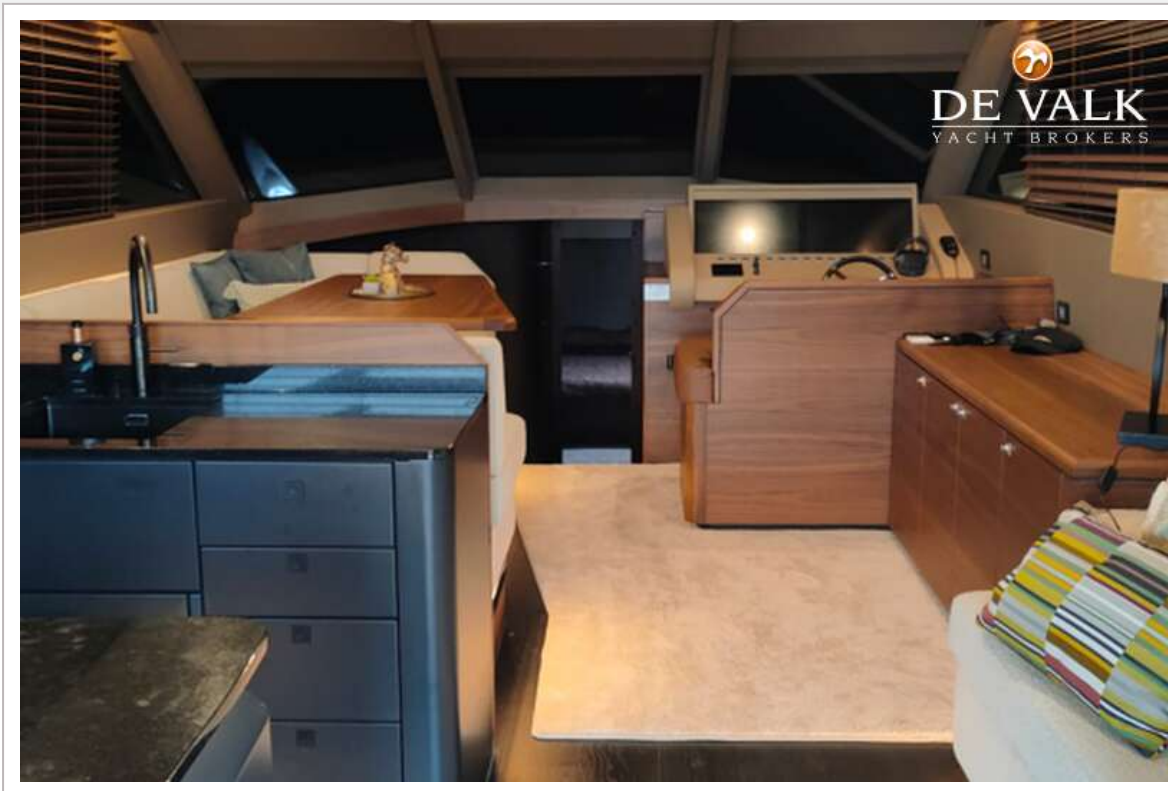


VAN DER HEIJDEN EXCLUSIVE DELUXE 2000









VAN DER HEIJDEN EXCLUSIVE DELUXE 2000

