



DE VALK  
YACHT BROKERS



BALI 4.2



DE VALK  
YACHT BROKERS

## BROKER'S COMMENTS

Sail away on this almost new Bali 4.2 (2023), equipped with the luxury Elegance Pack. She has been privately used by only one family and features the desirable 4-cabin layout. The yacht is in excellent condition and comes with a comprehensive electronic package, a 10 kW silent generator; all equipment shows very little use. The salon features the optional comfort seats and a full-size electric door, creating a seamless indoor-outdoor living space. Spanish Matricula is paid. Highly recommended - this Bali 4.2 is truly in a fantastic shape.

*Willem Koopmans*

## SPECIFICATIONS

<b>Dimensions</b>	12.45 x 7.07 x 1.22 (m)	<b>Builder</b>	Chantier Catana S.A.S.
<b>Built</b>	2023	<b>Cabins</b>	4
<b>Material</b>	GRP	<b>Berths</b>	8
<b>Engine(s)</b>	2 x Yanmar 4JH45 diesel	<b>Hp/Kw</b>	2 x 45.00 (hp), 33.12 (kw)
<b>Asking price</b>	€ 599.000 (VAT Paid)	<b>Lying</b>	contact sales office

## CONTACT

<b>Sales office</b>	De Valk Costa Blanca	<b>Telephone</b>	+34 96 50 21 569
<b>Address</b>	Costa Blanca Region 03730 Javea Alicante ES	<b>E-mail</b>	costablanca@devalk.nl

## DISCLAIMER

These particulars are given in good faith as supplied but cannot be guaranteed.



## GENERAL

<b>Model</b>	BALI 4.2
<b>Type</b>	catamaran sailing yacht
<b>LOA (m)</b>	12,45
<b>LWL (m)</b>	12,50
<b>Beam (m)</b>	7,07
<b>Draft (m)</b>	1,22
<b>Headroom (m)</b>	2,10
<b>Year built</b>	2023
<b>Launched</b>	2023
<b>Builder</b>	Chantier Catana S.A.S.
<b>Country</b>	Tunisia
<b>Designer</b>	Poucin / Xavier Fuy
<b>Displacement (t)</b>	11,9
<b>CE norm</b>	A
<b>Hull material</b>	GRP
<b>Hull colour</b>	off-white
<b>Hull shape</b>	Catamaran
<b>Superstructure material</b>	GRP
<b>Rubbing strake</b>	rubber
<b>Deck material</b>	GRP
<b>Deck finish</b>	non-skid moulded in
<b>Superstructure deck finish</b>	non-skid moulded in
<b>Cockpit deck finish</b>	non-skid moulded in
<b>Antifouling (year)</b>	July 2025, based on epoxy underground from new
<b>Window material</b>	tempered glass
<b>Deckhatch</b>	yes
<b>Portholes</b>	yes
<b>Flybridge</b>	yes
<b>Flybridge suncover</b>	yes
<b>Fuel tank (litre)</b>	polyethylene 320



Fuel tank 2 (litre)	polyethylene 320
Level indicator (fuel tank)	yes
Freshwater tank (litre)	polyethylene 860, 400 + 460 ltr
Level indicator (freshwater)	yes
Blackwater tank (litre)	polyethylene 220, 4 x 55 ltr
Blackwater tank extraction	yes
Wheel steering	mechanical
Outside helm position	yes
Emergency tiller	yes
More info on hull	As new
Extra info	Only family used, no charter
Extra info	Less than 300 engine hours, overall almost new

## ACCOMMODATION

Cabins	4
Berths	8
Interior	nut Modern
Layout	4 cabins
Floor	parquet
Open cockpit	With fantastic full size electrical door
Aft deck	yes
Deck saloon	With two club corner arm chairs instead of daybed
Saloon	With full size opening door to aft deck
Headroom saloon (m)	2,10
Air-conditioning	reverse cycle airco In salon Frigomar 16000 BTU
Navigation center	With 7
Chart table	yes
Aft Cabin	2x with double beds
Dinette	yes
Opening door to cockpit	Electric operated
Galley	yes



Countertop	Duopal Off white
Sink	stainless steel 1,5
Cooker	calor gas Eno 3 burner
Oven	calor gas Eno
Microwave	Samsung 230 Volt
Fridge	336 ltr with chilled water
Freezer	yes
Hot water system	220V + engine Boiler
Water pressure system	electrical Including fresh water purifying filter
Dishwasher	Electrolux
Hot water tap	Boiler
Owners cabin	double bed
Bed length (m)	2
Wardrobe	hanging and shelves
Bathroom	en suite
Toilet	en suite Large model
Toilet system	electric
Wash basin	in the bathroom
Shower	shared
Guest cabin 1	double bed
Bed length (m)	2
Wardrobe	hanging and shelves
Bathroom	en suite
Toilet	en suite Large model
Toilet system	electric
Wash basin	in the bathroom
Shower	shared
Guest cabin 2	double bed
Bed length (m)	2
Wardrobe	hanging and shelves
Bathroom	en suite
Toilet	en suite Large model



Toilet system	electric
Wash basin	in the bathroom
Shower	shared
Guest cabin 3	double bed
Bed length (m)	2
Wardrobe	hanging and shelves
Bathroom	en suite
Toilet	en suite Large model
Toilet system	electric
Wash basin	in the bathroom
Shower	shared

## MACHINERY

No of engines	2
Make	Yanmar
Type	4JH45
HP	45
kW	33.12
Fuel	diesel
Year installed	2023
Maximum speed (kn)	8,5
Cruising speed (kn)	6,5
Consumption (l/hr)	5
Engine cooling system	freshwater heat exchanger
Drive	sail-drive
Saildrive seal	yes
Engine controls	bowden cable
Exhaust	watercooled
Propeller type	fixed
Propeller blades	3
Manual bilge pump	yes



<b>Electric bilge pump</b>	yes
<b>Bilge alarm</b>	yes
<b>Electrical installation</b>	12/230
<b>Generator</b>	Sole diesel 10 kW
<b>Running hours generator</b>	52
<b>Batteries</b>	4x service, 2x start
<b>Start battery</b>	2x 95 Ah Exide
<b>Service battery</b>	4x 135 Ah Victron Gel
<b>Generator battery</b>	yes
<b>Windlass battery</b>	yes
<b>Battery monitor</b>	Controller
<b>Battery charger/inverter</b>	12/230 70 Amp /1600 Watt
<b>Solar panel</b>	4x 100 Watt
<b>Shorepower</b>	with cable
<b>Watermaker</b>	105 ltr/h Water-Pro compact SE-120

## NAVIGATION

<b>Compass on flybridge</b>	yes
<b>Electric compass</b>	On pilot
<b>Multi control display</b>	Raymarine 7" and 12" at steering position
<b>Depth sounder/log</b>	yes
<b>Windset</b>	yes
<b>Repeater</b>	Raymarine I-70S instruments
<b>VHF</b>	Raymarine Ray 63 inside and hand set outside
<b>Autopilot</b>	Raymarine P70
<b>Rudder angle indicator</b>	On plotter
<b>Radar</b>	Chip Quantum doppler serie, Raymarine
<b>GPS</b>	yes
<b>Radar/GPS/plotter</b>	Raymarine Axiom 7" and 12"
<b>Electronic chart(s)</b>	On Raymarine
<b>AIS transceiver</b>	Raymarine



<b>Navigation lights</b>	yes
<b>Extra info</b>	Equipped with Raymarine Pack 1 and 2

## EQUIPMENT

<b>Fixed hardtop</b>	Semi fixed
<b>Bimini</b>	Helm station position plus full enclosure
<b>Sun awning</b>	Forward cabin
<b>Cockpit cushions</b>	Also at forward and sun cushions fly bridge with headboard
<b>Cockpit table</b>	yes
<b>Bathing platform</b>	yes
<b>Boarding ladder</b>	yes
<b>Transom door</b>	Gate stainless steel
<b>Deck shower</b>	Warm/cold
<b>Anchor</b>	Mantus M2 30 kg
<b>Anchor chain</b>	60 mtr
<b>Chain counter</b>	Quick
<b>Windlass</b>	Quick 1000 Watt
<b>Dinghy</b>	rigid inflatable Highfield 340
<b>Outboard</b>	Honda 20 hp, new 2023
<b>Davits</b>	stainless steel
<b>Davits controls</b>	electrical
<b>Sea railing</b>	yes
<b>Life raft</b>	yes
<b>Life raft (pers)</b>	8
<b>Last life raft survey</b>	Valid until medio 2026
<b>Lifejackets</b>	yes
<b>Fenders</b>	yes
<b>Mooring lines</b>	yes
<b>TV</b>	Samsung 40"
<b>Radio</b>	Fusion
<b>Cockpit speakers</b>	yes



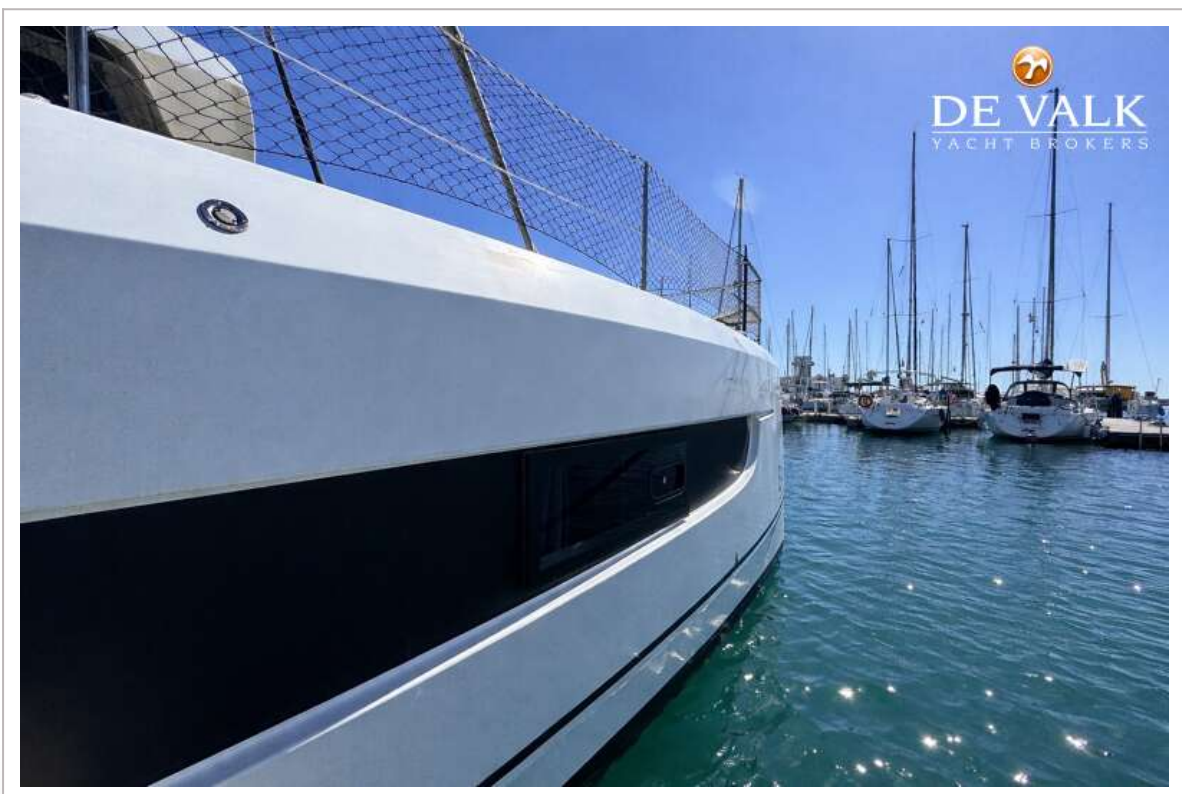
Speakers in salon	yes
Fire extinguisher	yes

## RIGGING

Rigging	cat-rig
Standing rigging	wire
Material mast	aluminium Z-spars
Mainsail	Squaretop Dacron
Fully battened mainsail	In lazy bag
Genoa	Dacron
Genoa furler	Profurl
Primary sheet winch	Electrical
Secondary sheet winch	Manual



# BALI 4.2



# BALI 4.2

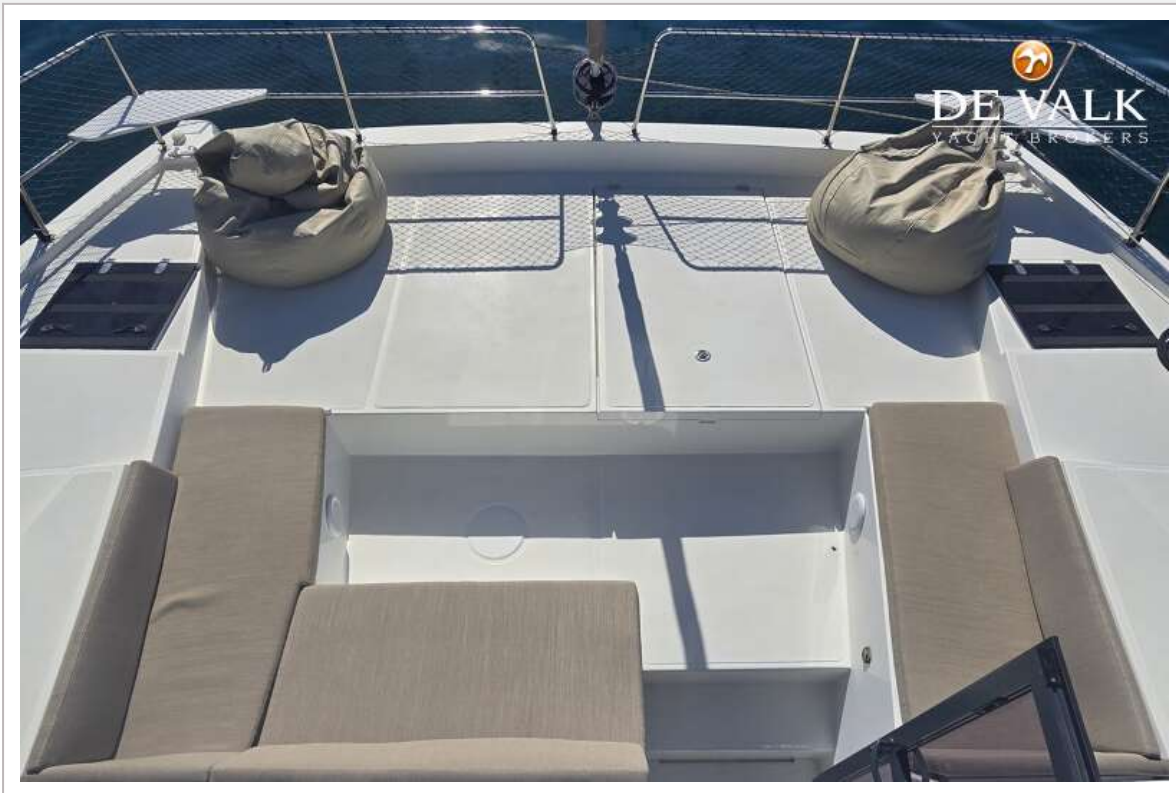


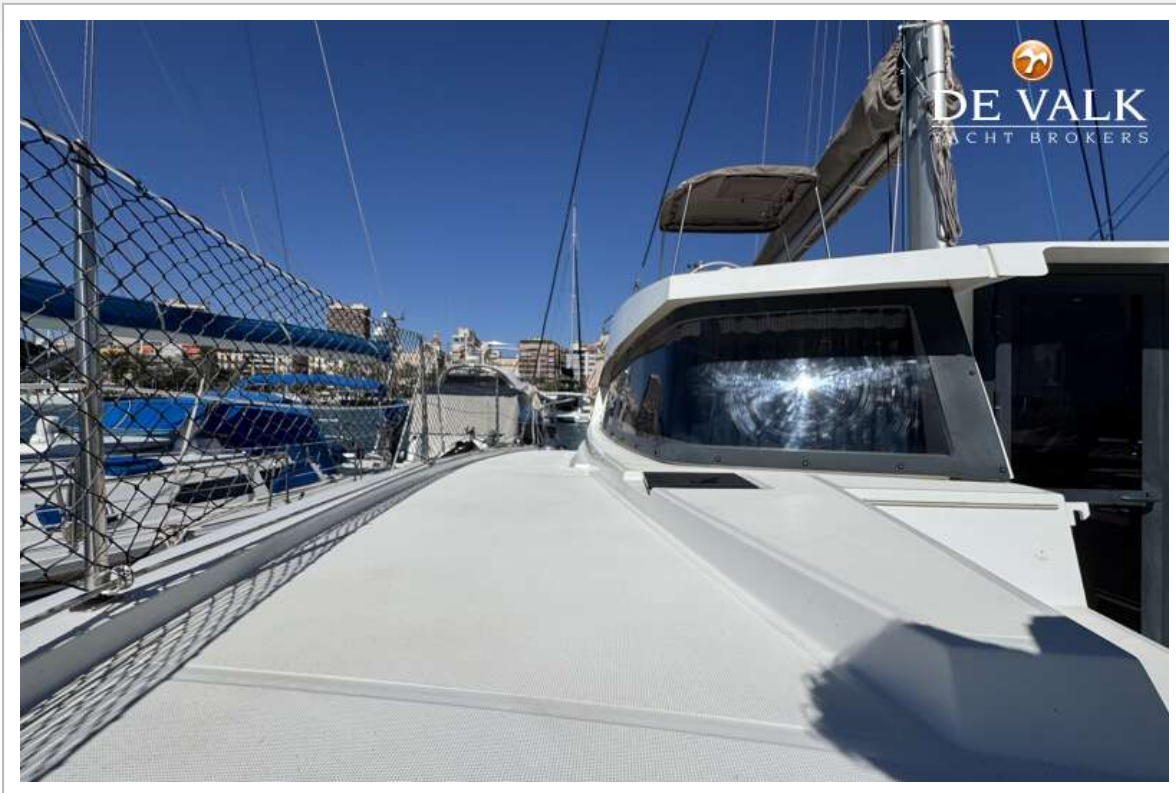
# BALI 4.2

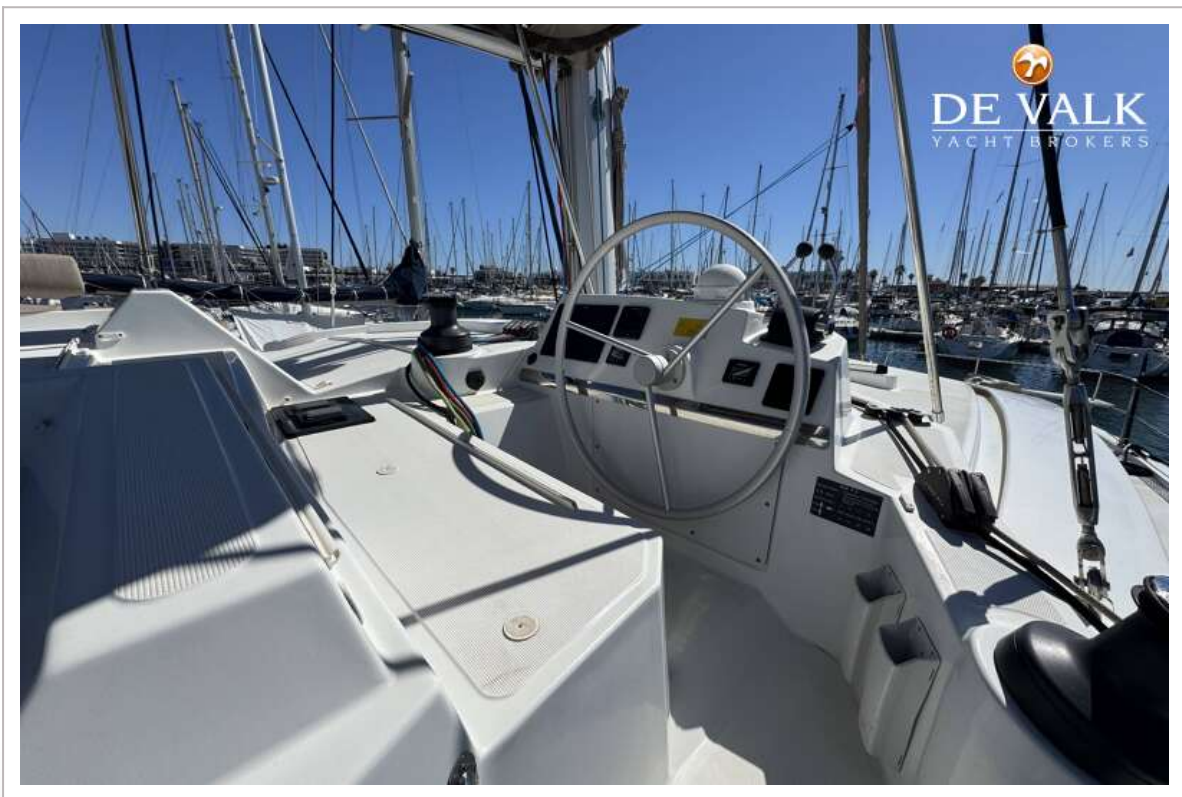
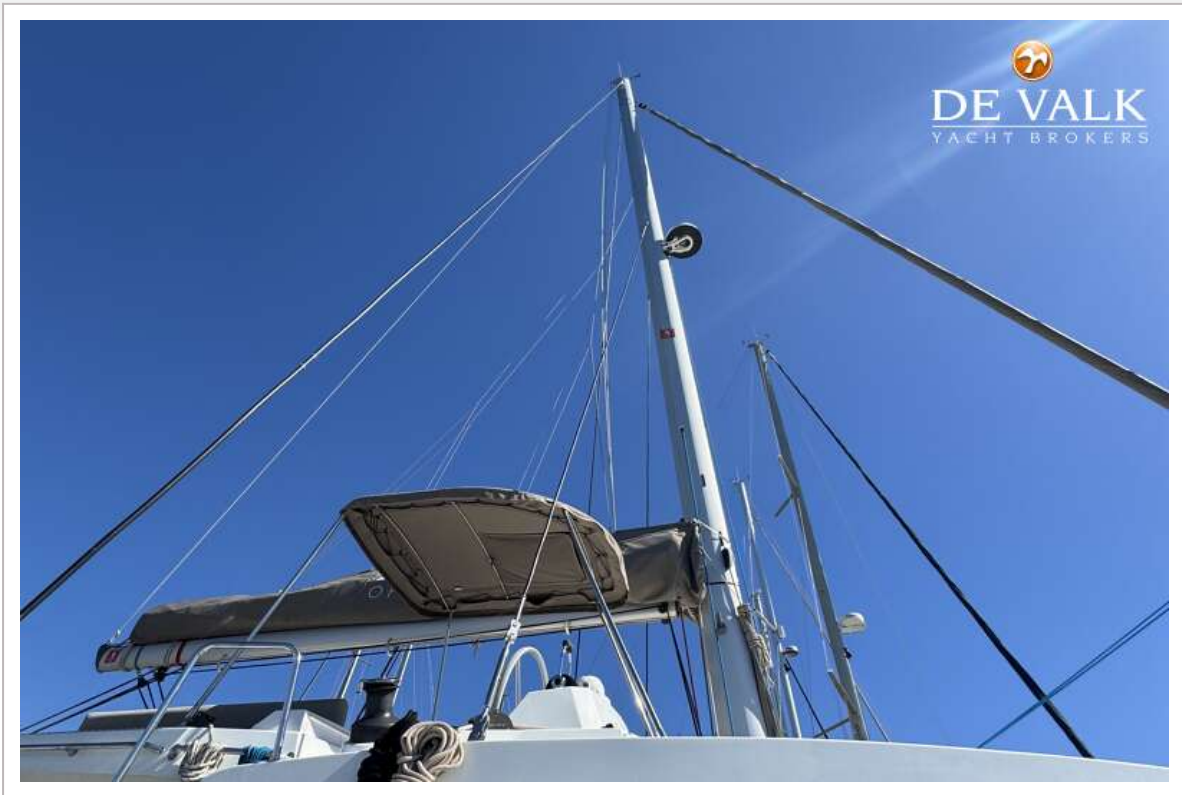


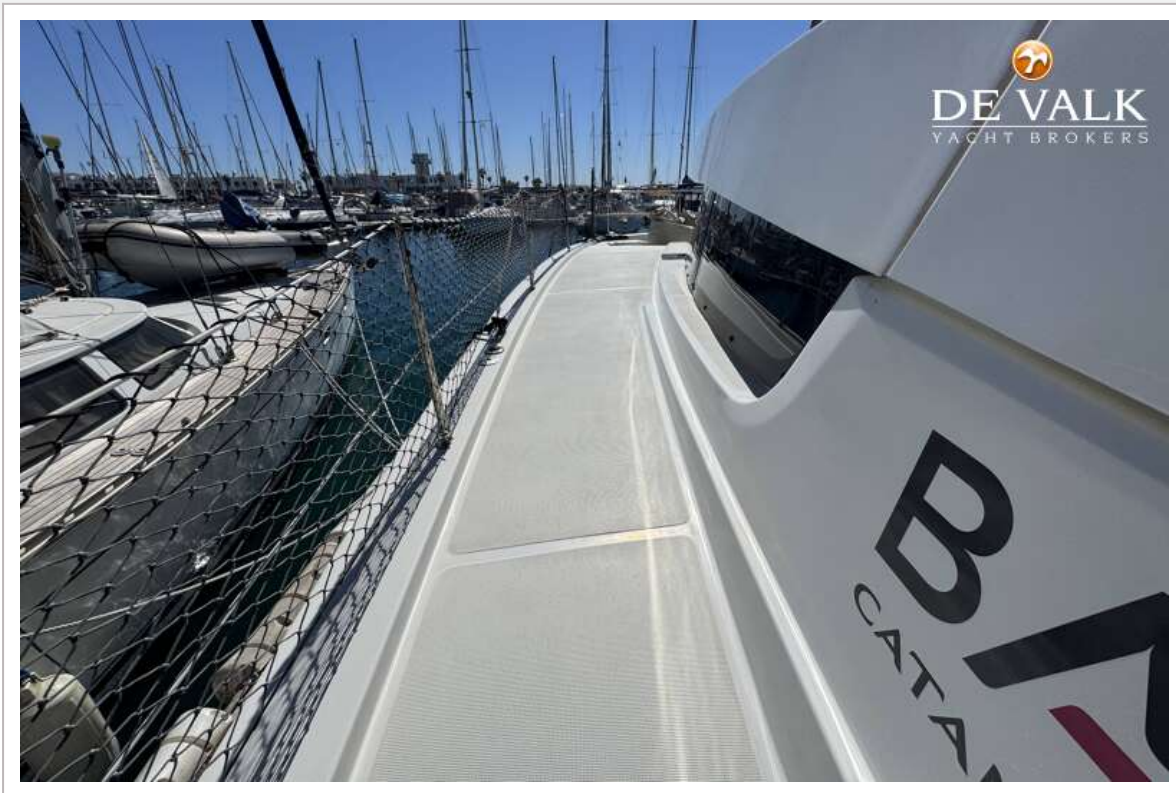


# BALI 4.2









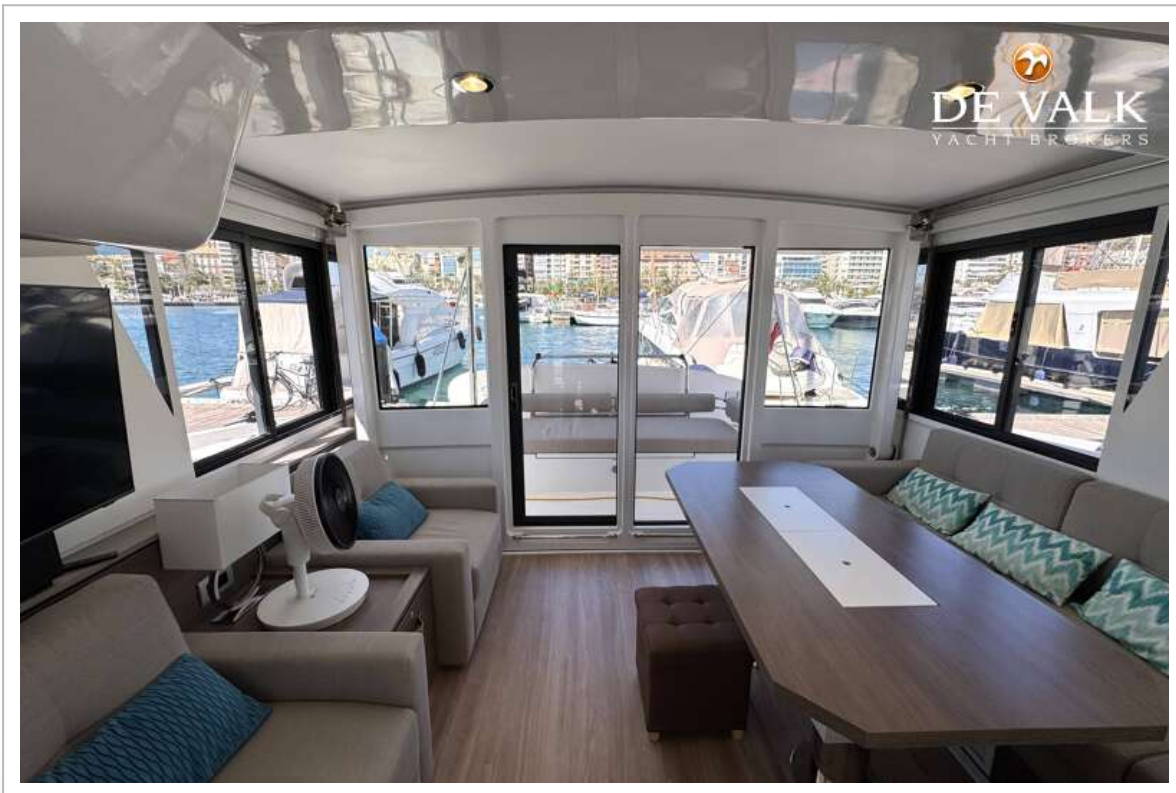
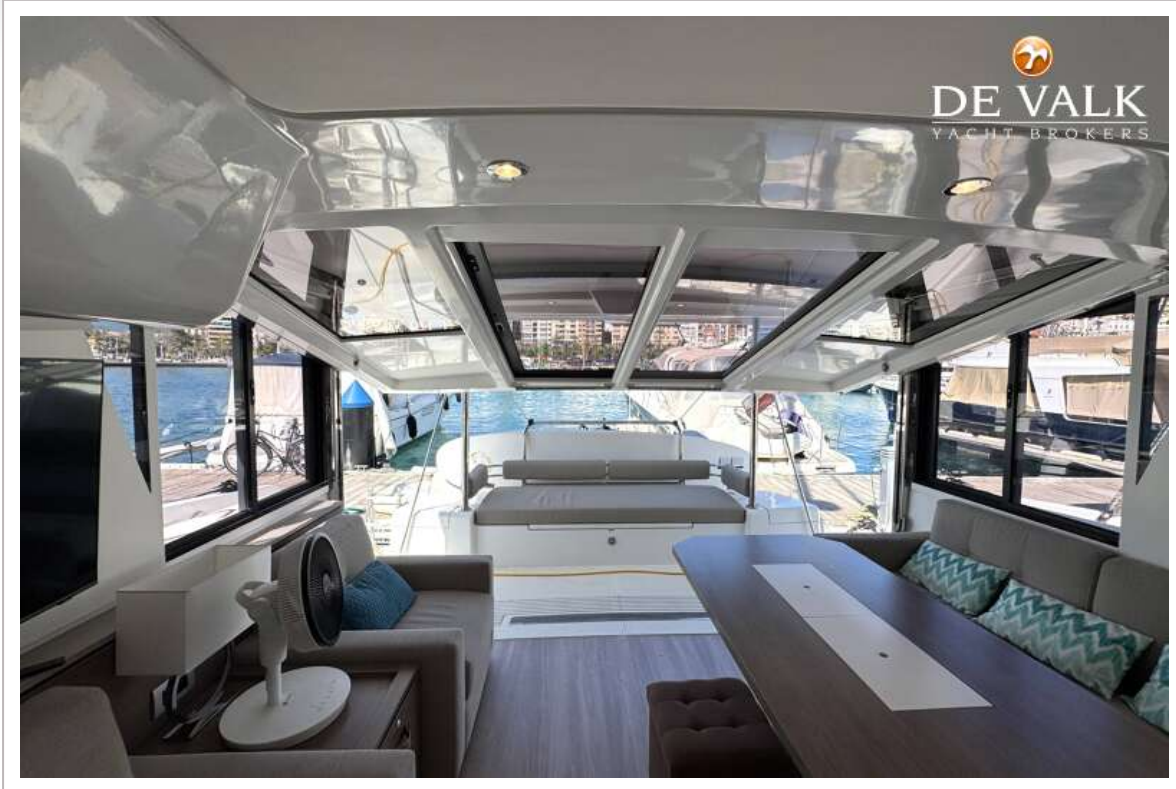


# BALI 4.2



# BALI 4.2



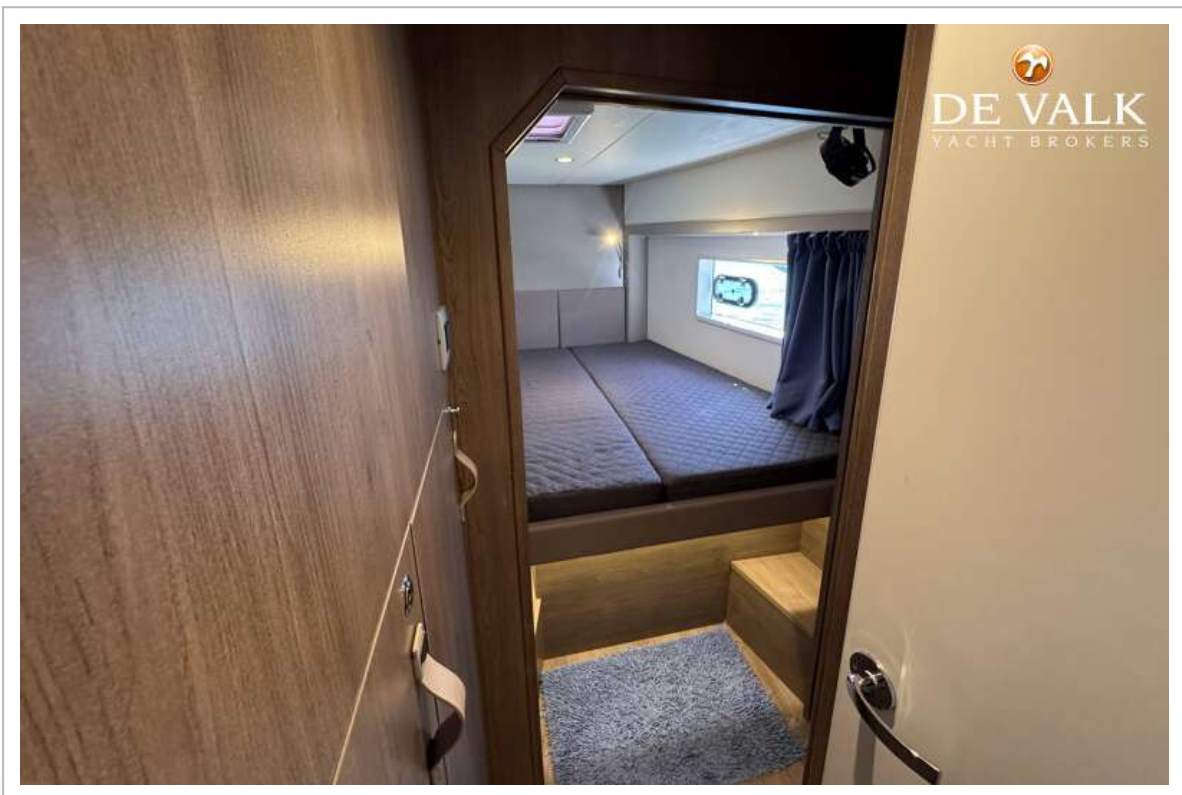
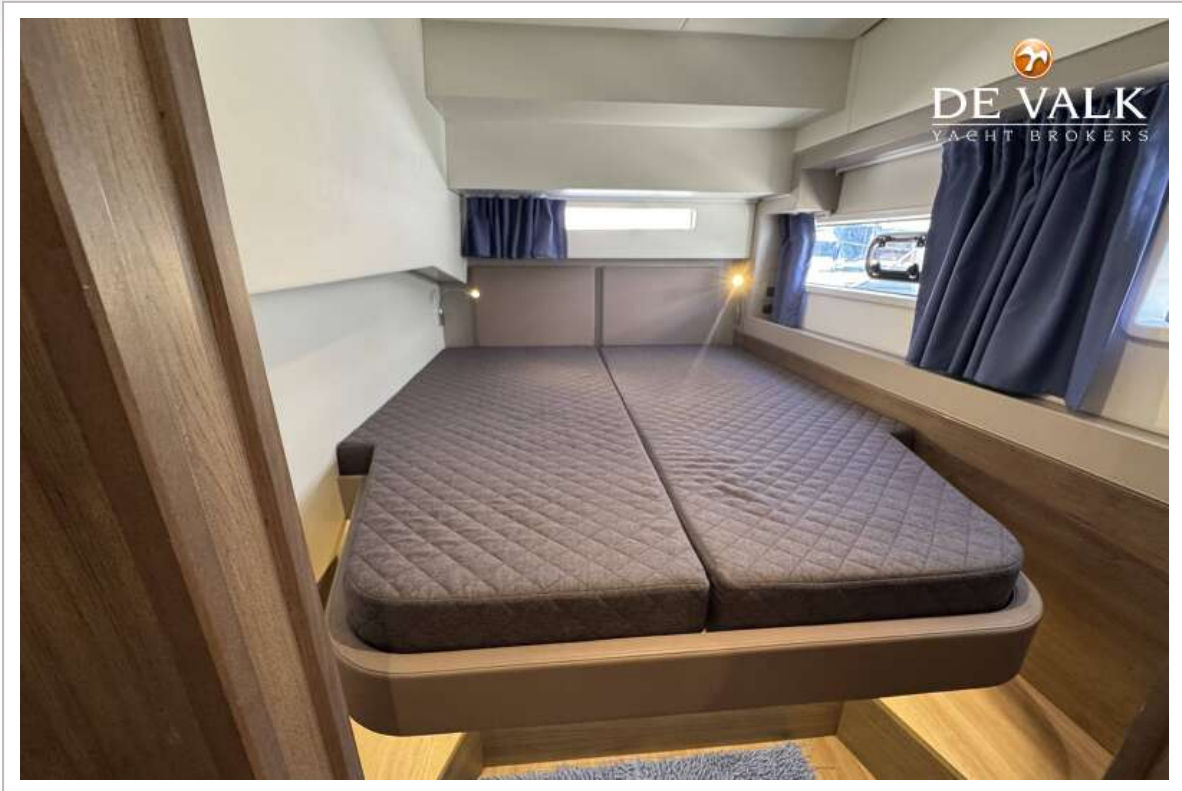


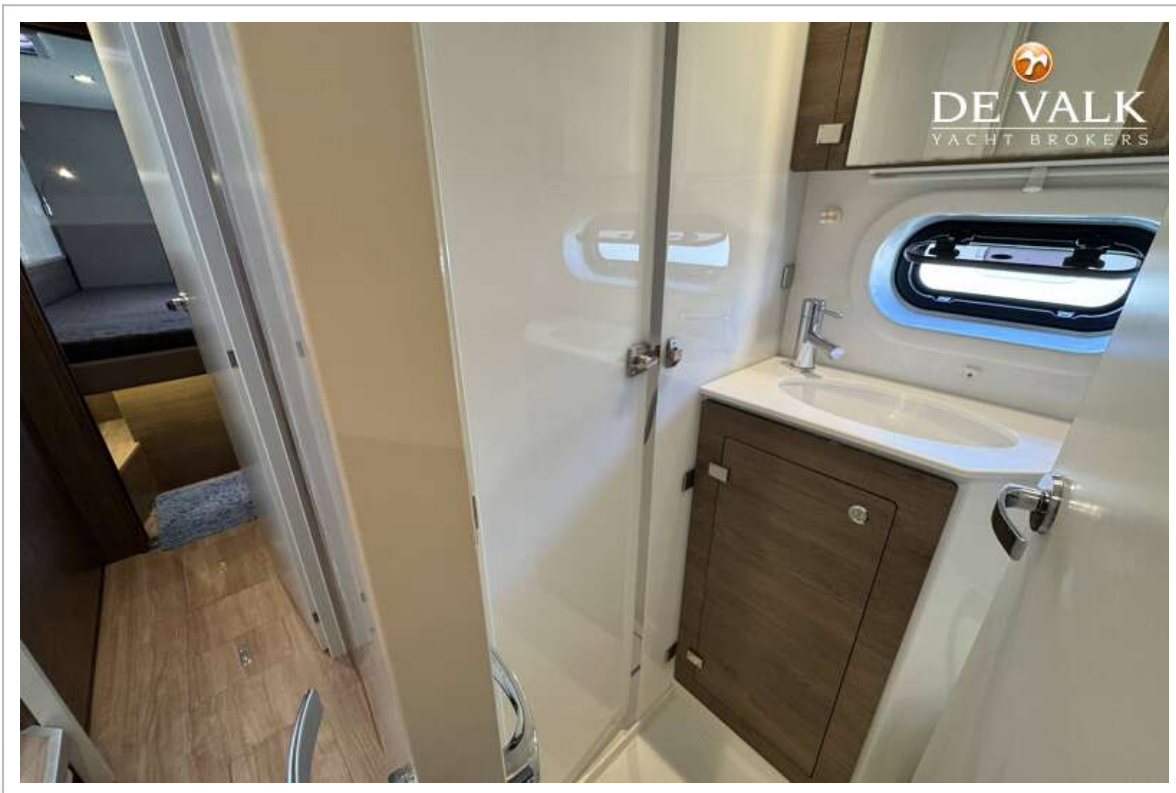
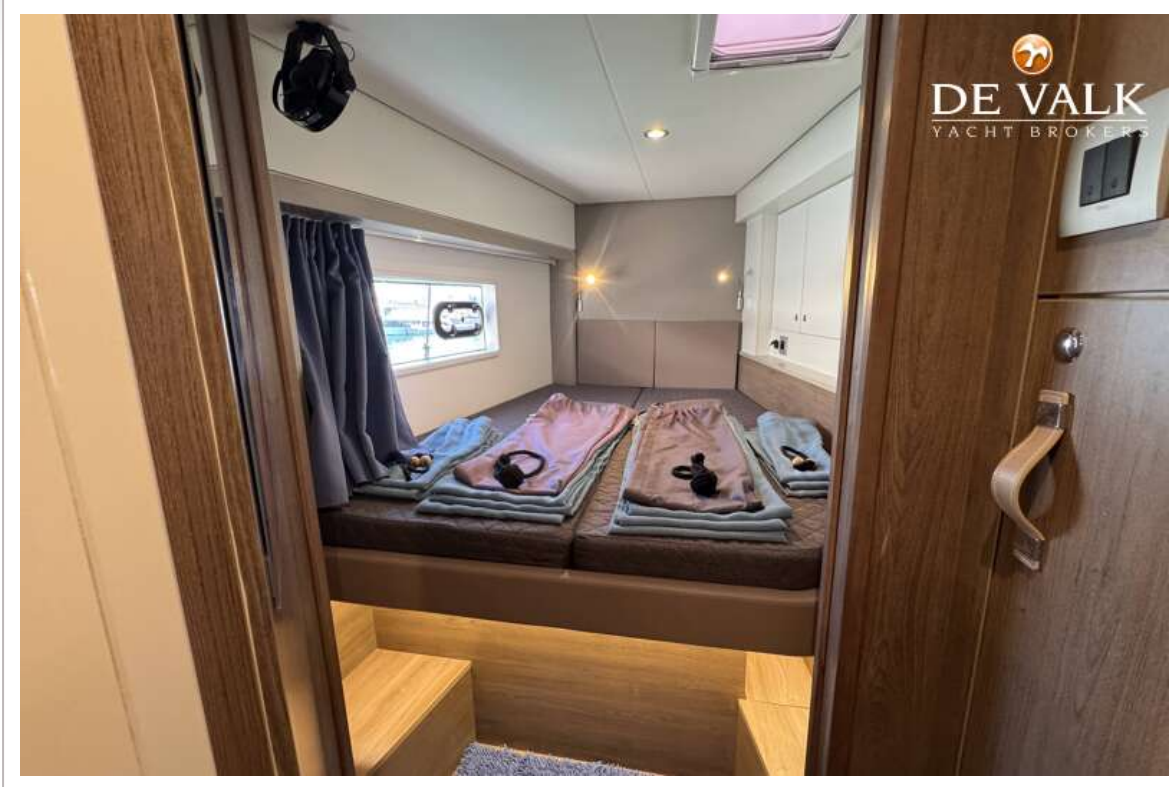
# BALI 4.2









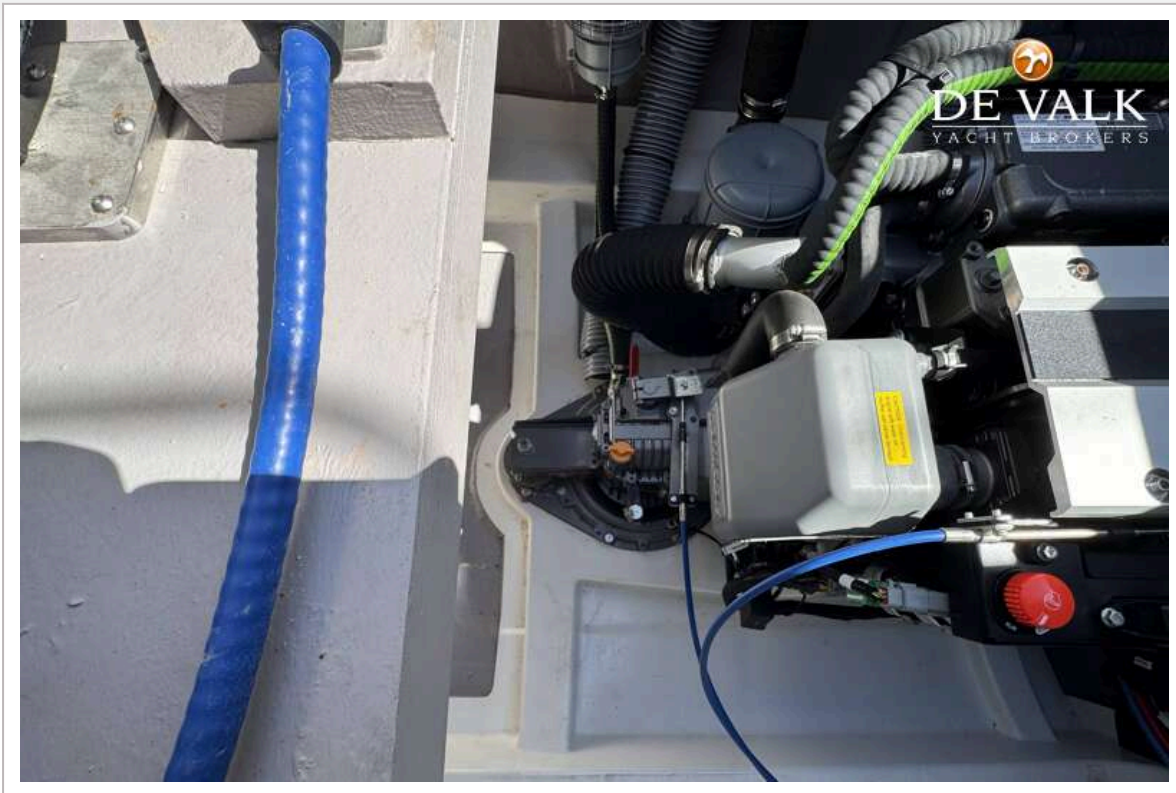




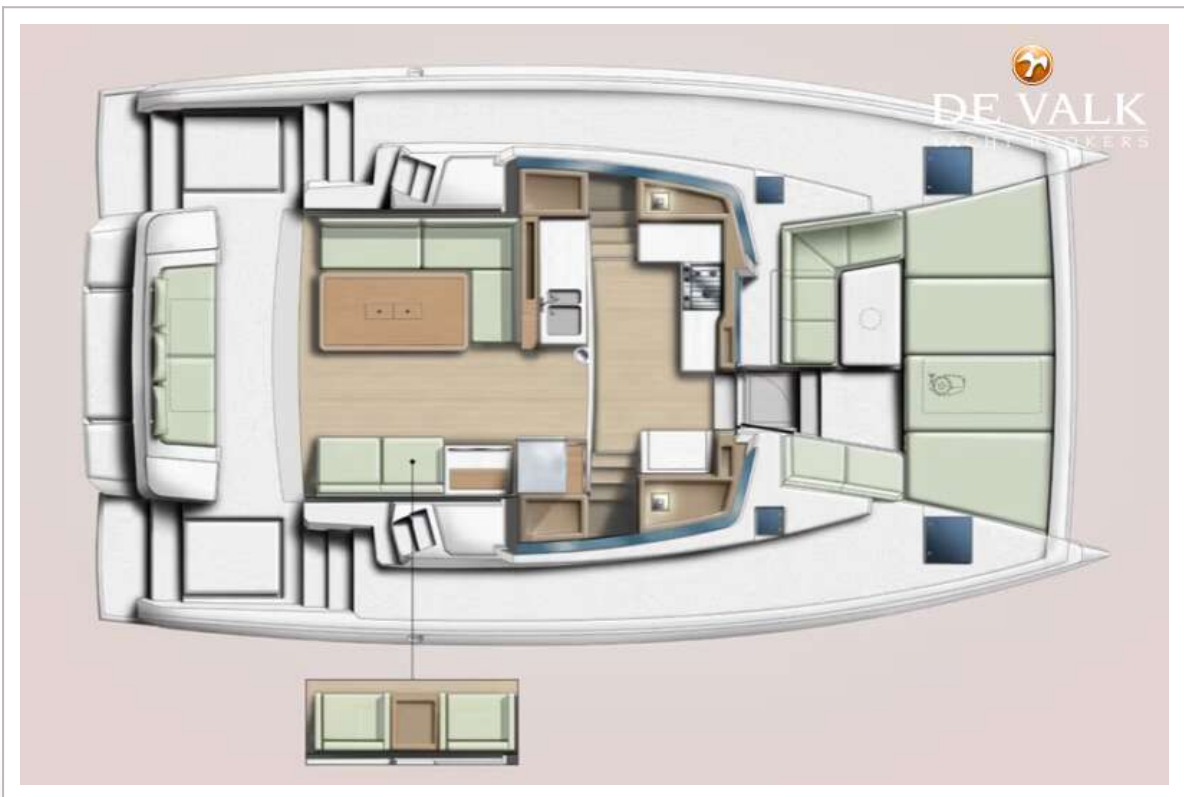
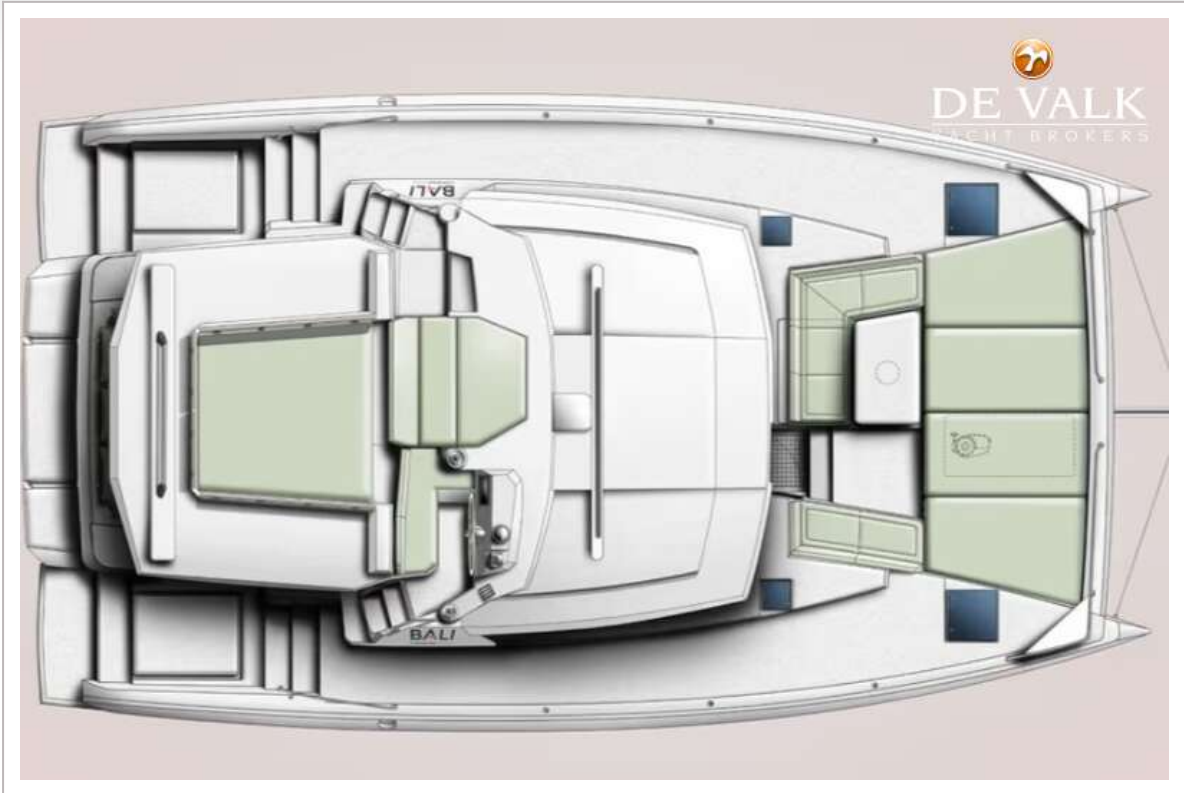
## BALI 4.2



# BALI 4.2



# BALI 4.2



# BALI 4.2

