



DE VALK  
YACHT BROKERS



## VRI-JON CONTESSA 45 PILOTHOUSE



DE VALK  
YACHT BROKERS

# VRI-JON CONTESSA 45 PILOTHOUSE

## BROKER'S COMMENTS

Vri-Jon 45 Pilot "Scorpio" is a very pleasant family cruiser of well-known Dutch shipyard. She is equipped with a robust main engine, bow and stern thruster which will make her easy to manoeuvre. She provides lots of comfort, also for longer journeys. Generator on board. "Scorpio" is moored in our covered sales marina in Sneek. . . where you are welcome 7 days a week.

*Henk de Vries*

## SPECIFICATIONS

<b>Dimensions</b>	13.90 x 4.10 x 1.10 (m)	<b>Builder</b>	Vri-Jon
<b>Built</b>	1993	<b>Cabins</b>	2
<b>Material</b>	Steel	<b>Berths</b>	6
<b>Engine(s)</b>	1 x Iveco Aifo diesel	<b>Hp/Kw</b>	149.00 (hp), 109.66 (kw)
<b>Asking price</b>	€ 149.500 (VAT Paid)	<b>Lying</b>	at sales office

## CONTACT

<b>Sales office</b>	De Valk Sneek	<b>Telephone</b>	+31 (0)515 42 80 30
<b>Address</b>	Zwolsmanweg 7 8606 KC Sneek NL	<b>E-mail</b>	sneek@devalk.nl

## DISCLAIMER

These particulars are given in good faith as supplied but cannot be guaranteed.



# VRI-JON CONTESSA 45 PILOTHOUSE

## GENERAL

<b>Model</b>	VRI-JON CONTESSA 45 PILOTHOUSE
<b>Type</b>	motor yacht
<b>LOA (m)</b>	13,90
<b>Beam (m)</b>	4,10
<b>Draft (m)</b>	1,10
<b>Air draft (m)</b>	5,50
<b>Air draft min (m)</b>	3,70
<b>Headroom (m)</b>	1,90
<b>Year built</b>	1993
<b>Builder</b>	Vri-Jon
<b>Country</b>	The Netherlands
<b>Displacement (t)</b>	15
<b>CE norm</b>	NA
<b>Hull material</b>	steel
<b>Hull colour</b>	white
<b>Hull thickness (mm)</b>	4
<b>Hull shape</b>	hard chine
<b>Superstructure material</b>	steel
<b>Superstructure (mm)</b>	4
<b>Deck plate thickness (mm)</b>	4
<b>Rubbing strake</b>	stainless steel
<b>Deck material</b>	steel
<b>Deck finish</b>	paint
<b>Superstructure deck finish</b>	paint
<b>Cockpit deck finish</b>	non-skid paint
<b>Antifouling (year)</b>	2026
<b>Dorades</b>	yes
<b>Window frame</b>	aluminium
<b>Window material</b>	glass Gebo
<b>Deckhatch</b>	2x Gebo



# VRI-JON CONTESSA 45 PILOTHOUSE

<b>Portholes</b>	yes
<b>Insulation</b>	rockwool
<b>Flybridge</b>	yes
<b>Radar arch</b>	collapsible
<b>Mast can be lowered</b>	manual
<b>Fuel tank (litre)</b>	stainless steel 500
<b>Fuel tank 2 (litre)</b>	stainless steel 500
<b>Level indicator (fuel tank)</b>	yes
<b>Freshwater tank (litre)</b>	stainless steel 2x 500
<b>Level indicator (freshwater)</b>	yes
<b>Blackwater tank (litre)</b>	stainless steel 500
<b>Level indicator (blackwater)</b>	yes
<b>Blackwater tank extraction</b>	deck extraction + pump
<b>Wheel steering</b>	hydraulic
<b>Flybridge helm position</b>	yes
<b>More info on paintwork</b>	Hull and superstructure painted 2020, hull sandblasted 2020

## ACCOMMODATION

<b>Cabins</b>	2
<b>Berths</b>	6
<b>Interior</b>	teak
<b>Floor</b>	teak and holly (needs attention)
<b>Aft deck</b>	yes
<b>Pilot house</b>	yes
<b>Saloon</b>	yes
<b>Headroom saloon (m)</b>	2,0
<b>Heating</b>	diesel ducted hot air Ebenspacher AirTronic D4 Plus
<b>Aft Cabin</b>	yes
<b>Dining room</b>	yes
<b>Dinette</b>	yes
<b>Dinette to convert into berth</b>	yes



# VRI-JON CONTESSA 45 PILOTHOUSE

Opening door to aft deck	yes
Galley	yes
Countertop	corian
Sink	stainless steel
Cooker	calor gas 4-pits Zanussi
Microwave	Moulinex Micro Chef 750W.
Fridge	1x Webasto (1085BA1) 1x Isotherm (1085BA1)
Freezer	In the fridge
Hot water system	220V + engine Boiler 80 ltr. &
Water pressure system	electrical
Owners cabin	French bed
Bed length (m)	2,0
Wardrobe	hanging/drawers/shelves
Bathroom	shared
Toilet	shared
Toilet system	manual
Wash basin	in the bathroom
Shower	shared
Guest cabin 1	v-bed
Bed length (m)	2,0
Wardrobe	drawers
Bathroom	shared
Toilet	shared
Shower	shared

## MACHINERY

No of engines	1
Make	Iveco Aifo
HP	149
kW	109.66
Fuel	diesel



# VRI-JON CONTESSA 45 PILOTHOUSE

<b>Year installed</b>	1993
<b>Maximum speed (kn)</b>	8
<b>Cruising speed (kn)</b>	6
<b>Consumption (l/hr)</b>	5,5
<b>Engine hours</b>	2632
<b>Engine cooling system</b>	seawater
<b>Drive</b>	shaft
<b>Engine controls</b>	bowden cable
<b>Gearbox</b>	hydraulic
<b>Bowthruster</b>	electric Cupa
<b>Sternthruster</b>	electric Cupa
<b>Propeller type</b>	fixed
<b>Propeller blades</b>	4
<b>Propeller shaft material</b>	stainless steel
<b>Shaft lubrication</b>	water
<b>Electric bilge pump</b>	yes
<b>Electrical installation</b>	12V/24V/230V
<b>Generator</b>	Fischer Panda P4000s 230V (2018)
<b>Running hours generator</b>	155
<b>Batteries</b>	10x
<b>Start battery</b>	1 (2023)
<b>Service battery</b>	4x ( 2024)
<b>Generator battery</b>	1x
<b>Bowthruster battery</b>	2x
<b>Sternthruster battery</b>	2x
<b>Battery monitor</b>	yes
<b>Battery charger/inverter</b>	Atlas Combi 12/1500/50
<b>Solar panel</b>	2x
<b>Shorepower</b>	with cable

## NAVIGATION



# VRI-JON CONTESSA 45 PILOTHOUSE

Compass on flybridge	Logic
Depth sounder	Vetus
Log	Vetus
GPS	GeoNav 6-Sunshine
Navigation lights	yes

## EQUIPMENT

Fixed hardtop	yes
Bimini	(2025)
Bathing platform	yes
Boarding ladder	yes
Anchor	yes
Anchor chain	yes
Windlass	manual Vetus
Davits	stainless steel
Davits controls	manual
Sea railing	stainless steel
Grab rail (superstructure)	stainless steel
Railing side opening gates	With boarding ladder
Wiper	1x
Horn	electric
Fenders	yes
Mooring lines	yes
TV	Flatscreen
Radio-cd player	Denon
Speakers in salon	Denon
Clock - barometer	Talamex
Fire extinguisher	yes



# VRI-JON CONTESSA 45 PILOTHOUSE



# VRI-JON CONTESSA 45 PILOTHOUSE



# VRI-JON CONTESSA 45 PILOTHOUSE



# VRI-JON CONTESSA 45 PILOTHOUSE



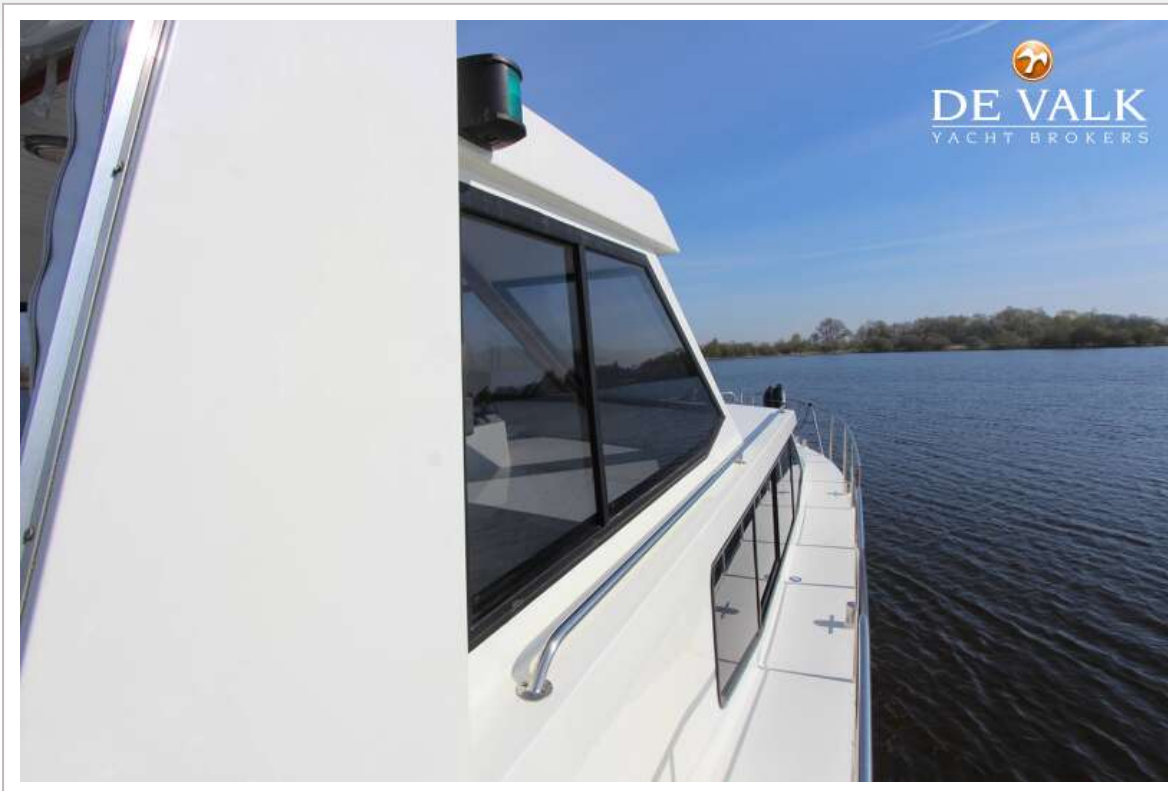
# VRI-JON CONTESSA 45 PILOTHOUSE



# VRI-JON CONTESSA 45 PILOTHOUSE



# VRI-JON CONTESSA 45 PILOTHOUSE



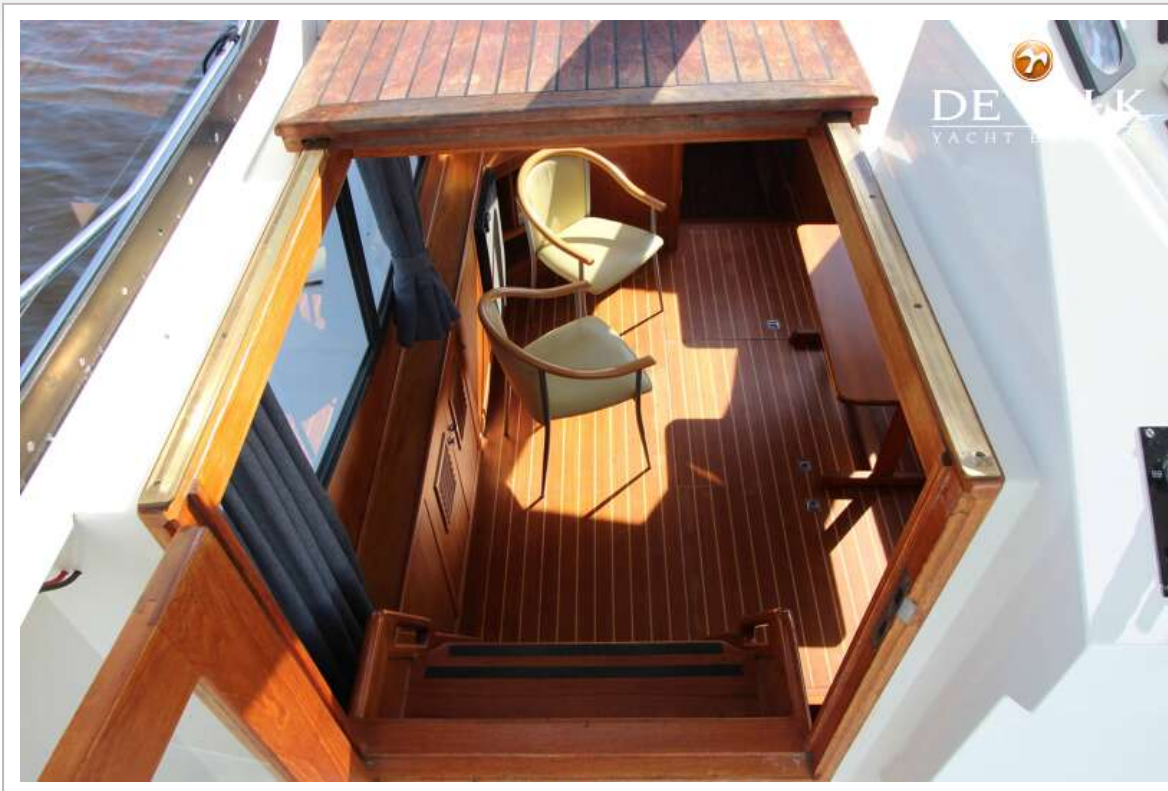
# VRI-JON CONTESSA 45 PILOTHOUSE



# VRI-JON CONTESSA 45 PILOTHOUSE



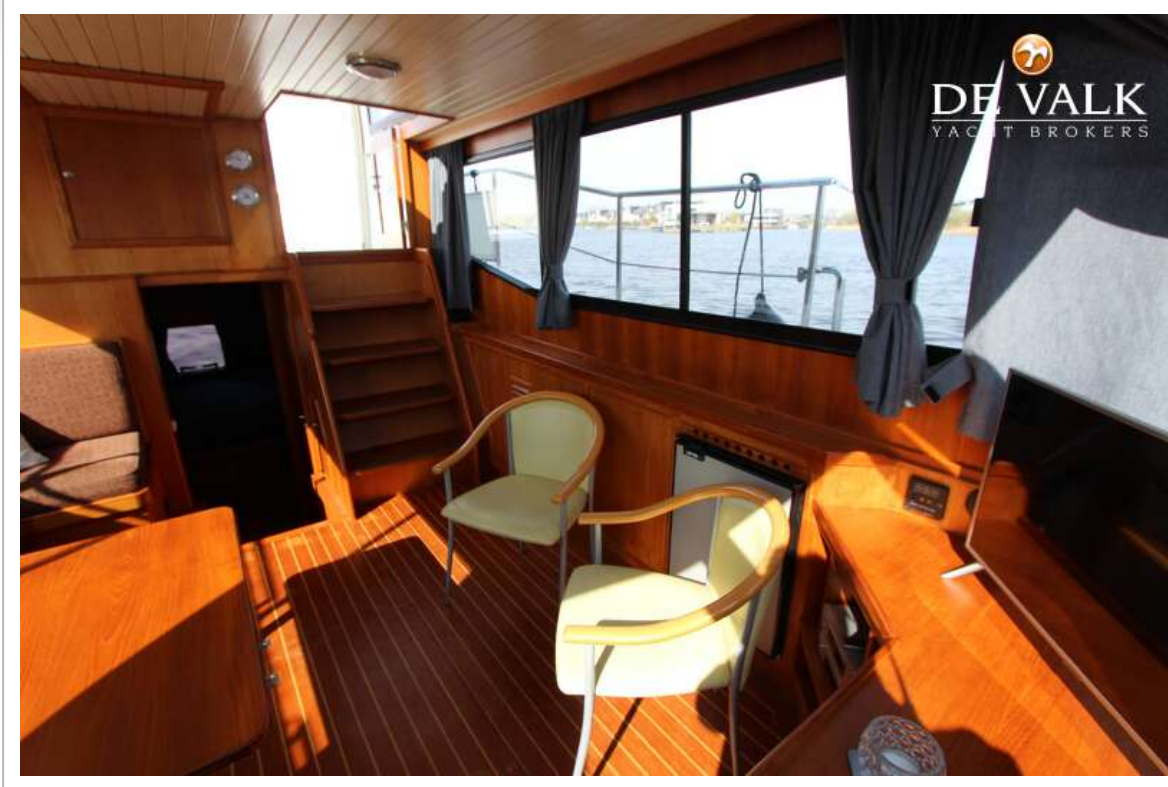
# VRI-JON CONTESSA 45 PILOTHOUSE



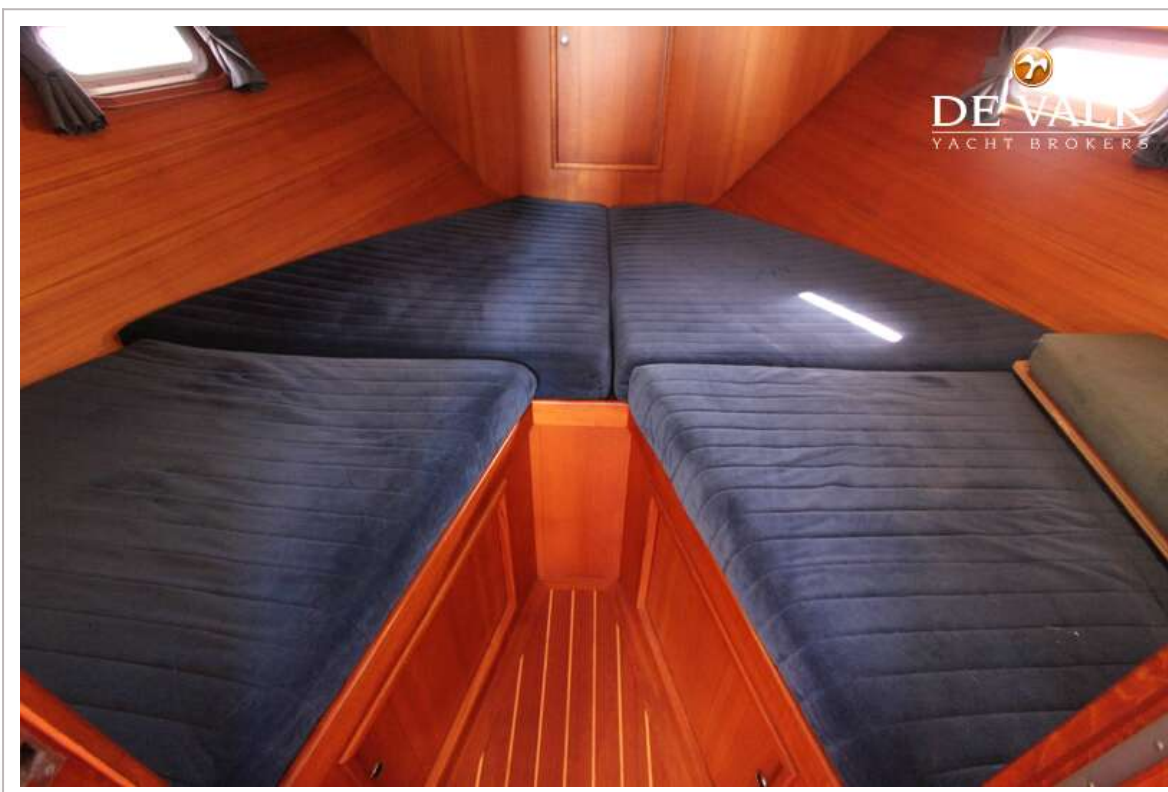
# VRI-JON CONTESSA 45 PILOTHOUSE



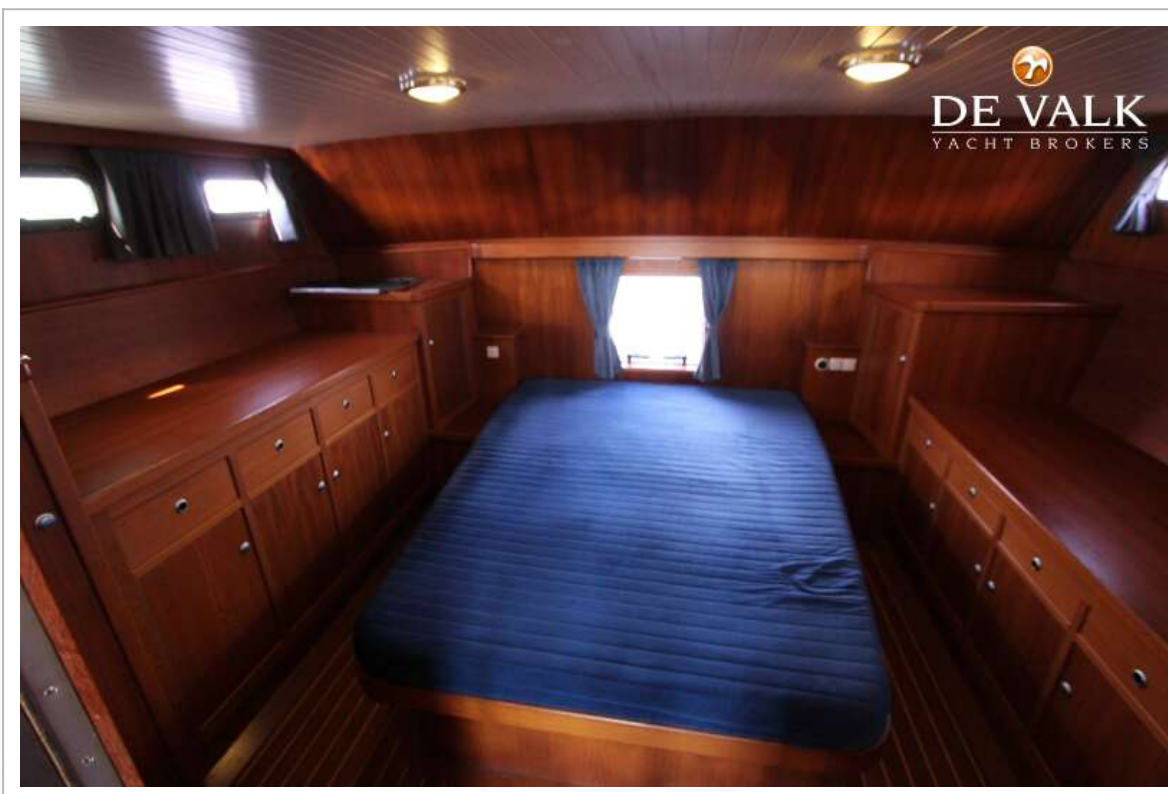
# VRI-JON CONTESSA 45 PILOTHOUSE



# VRI-JON CONTESSA 45 PILOTHOUSE



# VRI-JON CONTESSA 45 PILOTHOUSE



# VRI-JON CONTESSA 45 PILOTHOUSE

