



DE VALK  
YACHT BROKERS



## SUNSEEKER MANHATTAN 62



DE VALK  
YACHT BROKERS

# SUNSEEKER MANHATTAN 62

## BROKER'S COMMENTS

This Sunseeker Manhattan 62 is a spacious flybridge motor yacht from the well-known British shipyard Sunseeker. The model is appreciated for her sporty lines, solid construction, and comfortable layout. This Sunseeker Manhattan 62 offers a bright saloon, practical galley, and multiple cabins providing accommodation for family and friends. The Sunseeker Manhattan 62 "New Sensation" is being auctioned online via Bright Auctions. Bids may only be submitted online through the Bright Auctions website. All information about the auction can be found on the website: <https://bit.ly/4sReAuo>

*Jochem Heijermans*

## SPECIFICATIONS

<b>Dimensions</b>	19.60 x 4.75 x 1.25 (m)	<b>Builder</b>	Sunseeker International
<b>Built</b>	1998	<b>Cabins</b>	3
<b>Material</b>	GRP	<b>Berths</b>	6
<b>Engine(s)</b>	2 x MAN D2848LE403 diesel	<b>Hp/Kw</b>	2 x 800.00 (hp), 588.80 (kw)
<b>Asking price</b>	€ 50.000 (VAT Paid)	<b>Lying</b>	elsewhere / Not at sales office

## CONTACT

<b>Sales office</b>	De Valk Sint Annaland B.V.	<b>Telephone</b>	+31 166 601 000
<b>Address</b>	Koelhuisweg 4 4697 RM Sint Annaland NL	<b>E-mail</b>	sintannaland@devalk.nl

## DISCLAIMER

These particulars are given in good faith as supplied but cannot be guaranteed.



# SUNSEEKER MANHATTAN 62

## GENERAL

<b>Model</b>	SUNSEEKER MANHATTAN 62
<b>Type</b>	motor yacht
<b>LOA (m)</b>	19,60
<b>Beam (m)</b>	4,75
<b>Draft (m)</b>	1,25
<b>Headroom (m)</b>	2,05
<b>Year built</b>	1998
<b>Builder</b>	Sunseeker International
<b>Country</b>	United Kingdom
<b>Designer</b>	Sunseeker
<b>Displacement (t)</b>	28
<b>Hull material</b>	GRP
<b>Hull colour</b>	blue
<b>Hull shape</b>	deep-V
<b>Superstructure material</b>	GRP
<b>Rubbing strake</b>	stainless steel With rubber
<b>Deck material</b>	GRP
<b>Deck finish</b>	teak
<b>Superstructure deck finish</b>	non-skid moulded in
<b>Cockpit deck finish</b>	teak
<b>Antifouling (year)</b>	(2024)
<b>Window frame</b>	aluminium
<b>Window material</b>	perspex
<b>Deckhatch</b>	yes
<b>Portholes</b>	yes
<b>Flybridge</b>	yes
<b>Radar arch</b>	yes
<b>Fuel tank (litre)</b>	2 x 1750
<b>Level indicator (fuel tank)</b>	yes
<b>Freshwater tank (litre)</b>	1200



<b>Blackwater tank (litre)</b>	250
<b>Blackwater tank extraction</b>	deck extraction + pump
<b>Wheel steering</b>	hydraulic
<b>Inside helm position</b>	yes
<b>Flybridge helm position</b>	yes

## ACCOMMODATION

<b>Cabins</b>	3
<b>Berths</b>	6
<b>Floor</b>	carpet
<b>Deck saloon</b>	yes
<b>Headroom saloon (m)</b>	2,05
<b>Air-conditioning</b>	reverse cycle airco
<b>Dinette</b>	yes
<b>Sliding door to cockpit</b>	yes
<b>Galley</b>	yes
<b>Countertop</b>	corian
<b>Sink</b>	stainless steel 2 x
<b>Cooker</b>	electric Zanussi 4 burner
<b>Extractor</b>	Etna
<b>Microwave/oven combi</b>	Panasonic
<b>Fridge</b>	3 x (galley, saloon, flybridge)
<b>Freezer</b>	In galley fridge
<b>Hot water system</b>	220V + engine
<b>Water pressure system</b>	electrical
<b>Dishwasher</b>	Proline
<b>Owners cabin</b>	double bed
<b>Bed length (m)</b>	2,00 x 1,50
<b>Wardrobe</b>	hanging and shelves
<b>Bathroom</b>	en suite
<b>Toilet</b>	en suite



Toilet system	vacuum
Wash basin	in the bathroom
Shower	en suite
Guest cabin 1	twin single 2,00 x 0,80
Wardrobe	hanging and shelves
Bathroom	shared
Toilet	shared
Toilet system	vacuum
Wash basin	in the bathroom
Shower	shared
Guest cabin 2	double bed
Bed length (m)	2,00 x 1,40
Wardrobe	hanging and shelves
Washing machine/dryer combi	LG

## MACHINERY

No of engines	2
Make	MAN
Type	D2848LE403
HP	800
kW	588.80
Fuel	diesel
Year installed	1998
Maximum speed (kn)	28
Cruising speed (kn)	22
Engine cooling system	freshwater heat exchanger
Drive	shaft
Engine controls	hydraulic
Gearbox	hydraulic
Bowthruster	electric
Propeller type	fixed



# SUNSEEKER MANHATTAN 62

Propeller shaft material	stainless steel
Shaft lubrication	water
Electric bilge pump	yes
Electrical installation	12V / 24V / 230V
Generator	Kohler 12,5 kW
Running hours generator	3324
Start battery	yes
Service battery	yes
Battery charger	Victron Centaur 24/30
Inverter	Victron Phoenix Smart 24/3000 (2024)
Solar panel	(2024)
Shorepower	with cable

## NAVIGATION

Compass	yes
Compass on flybridge	yes
Depth sounder	Via Raymarine plotter
VHF	Icom
Radar	Raymarine Quantum
Plotter	2 x Raymarine (inside + on flybridge)
Navigation lights	yes
Searchlight	yes

## EQUIPMENT

Fixed windscreen	yes
Cockpit cover	(2024)
Cockpit cushions	yes
Cockpit table	yes
Cockpit chairs	yes
Bathing platform	yes
Boarding ladder	stainless steel



Transom door	yes
Gangway	yes
Deck shower	Warm + cold in cockpit
Anchor	Delta
Anchor chain	yes
Windlass	electrical
Capstan	2 x in cockpit with foot control
Deck crane	hydraulic
Sea railing	stainless steel
Grab rail (superstructure)	stainless steel
Horn	yes
Fenders	yes
Mooring lines	yes
TV	yes
TracVision ball	yes
Radio-cd player	JVC
Cockpit speakers	yes
Speakers in salon	yes



# SUNSEEKER MANHATTAN 62



# SUNSEEKER MANHATTAN 62



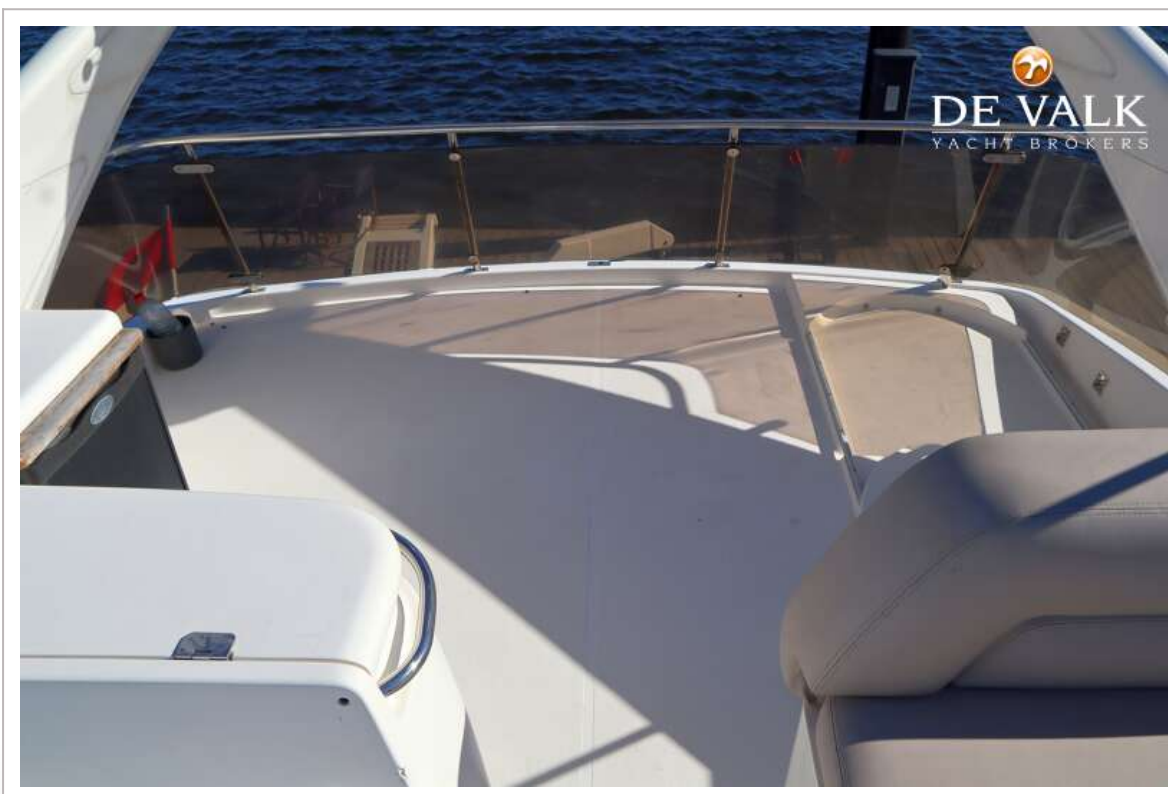
# SUNSEEKER MANHATTAN 62



# SUNSEEKER MANHATTAN 62



# SUNSEEKER MANHATTAN 62



# SUNSEEKER MANHATTAN 62



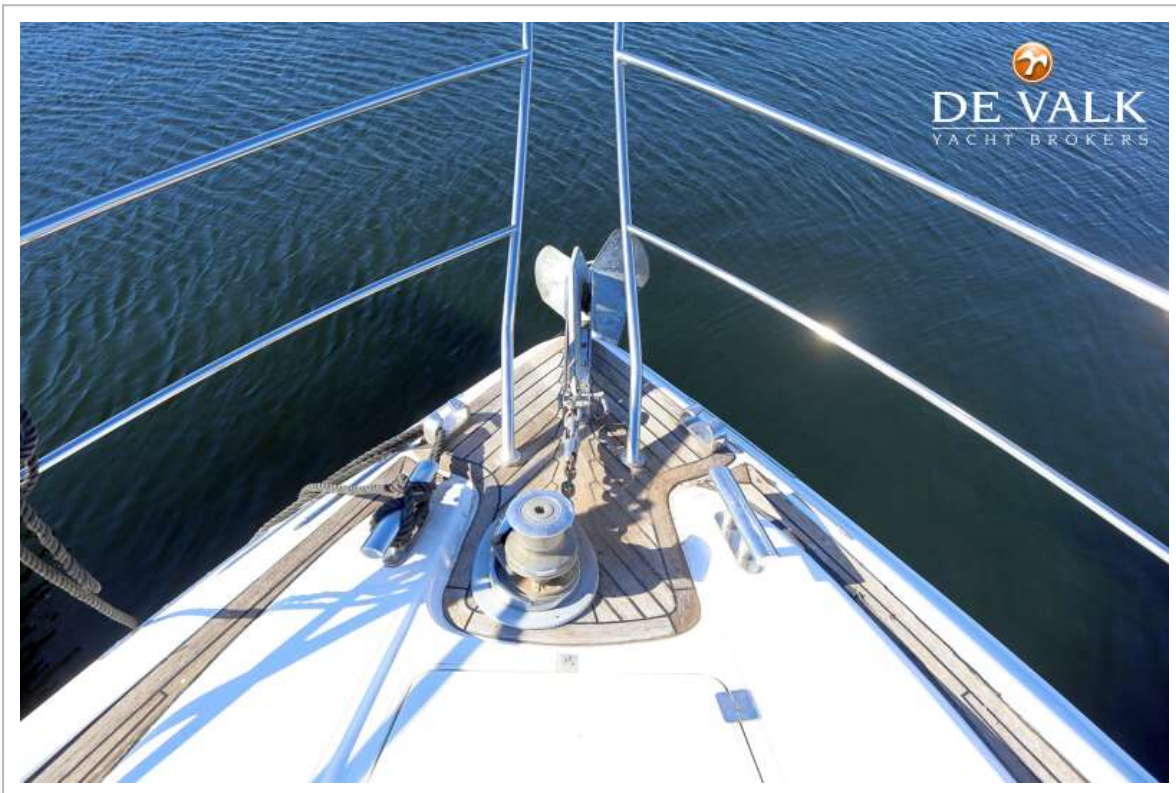
# SUNSEEKER MANHATTAN 62



# SUNSEEKER MANHATTAN 62



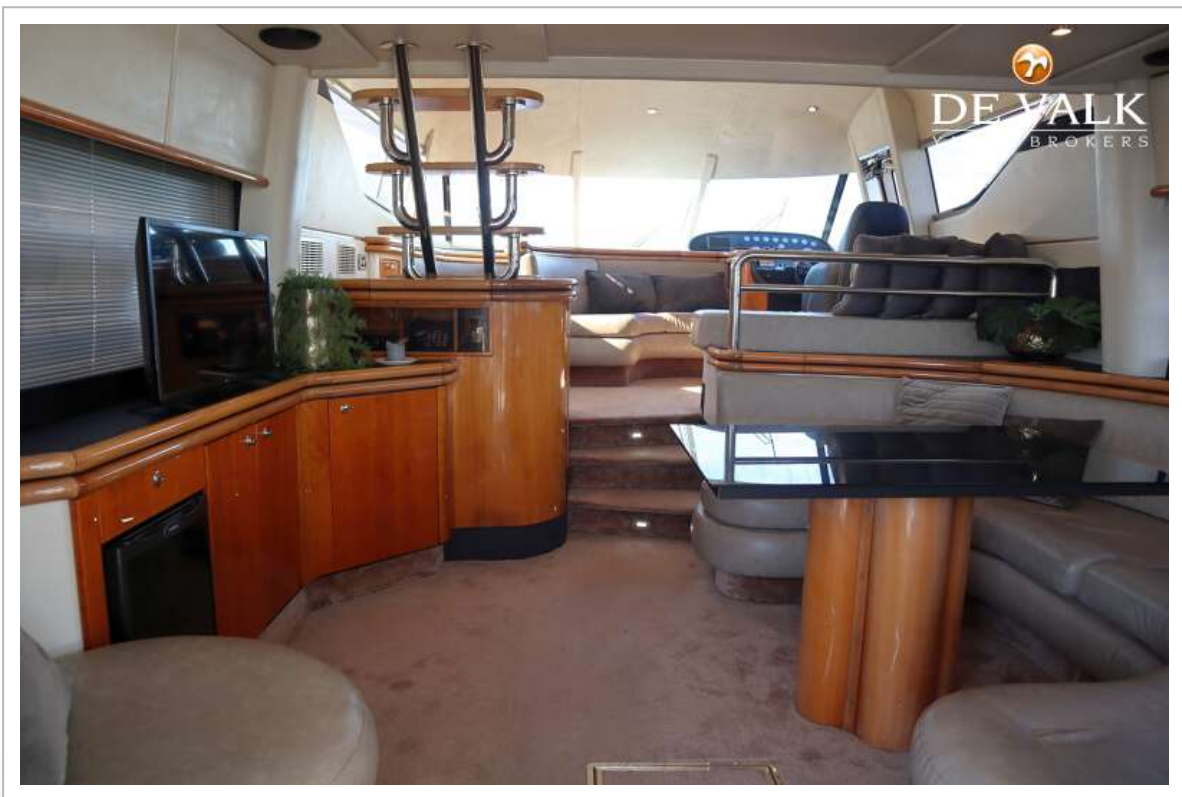
# SUNSEEKER MANHATTAN 62



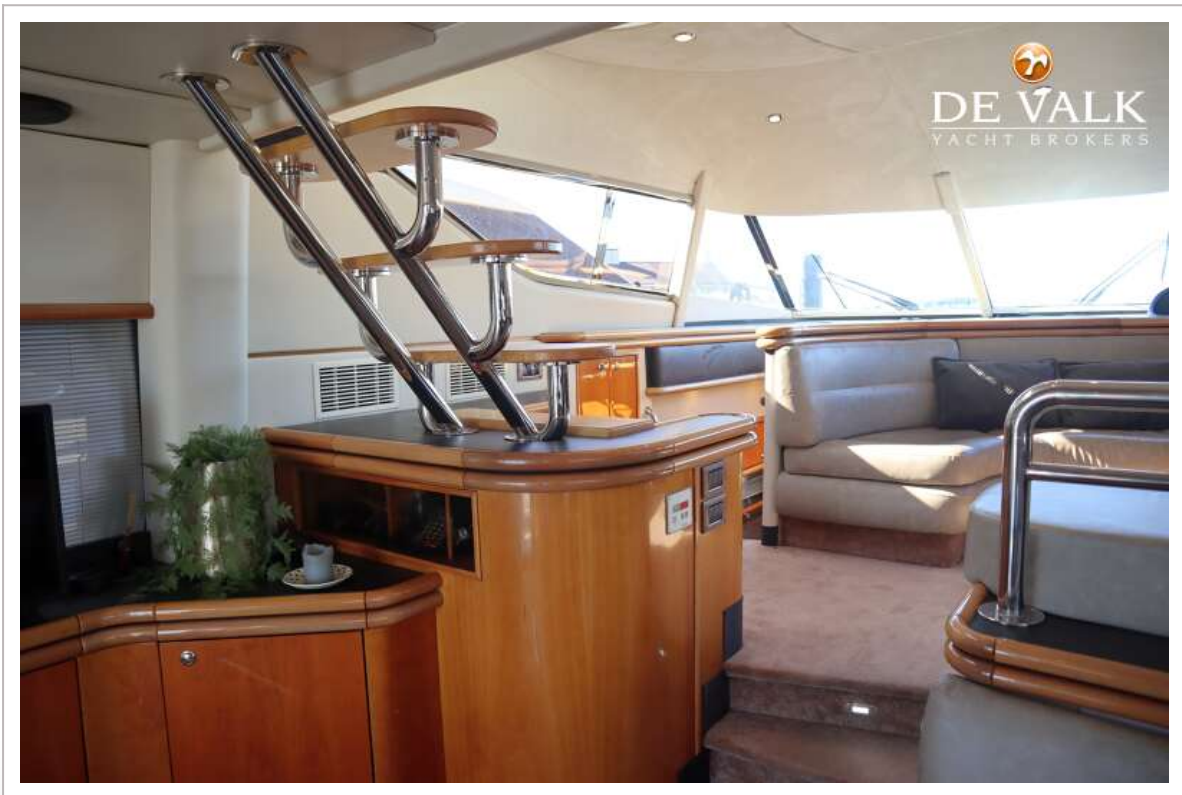
# SUNSEEKER MANHATTAN 62



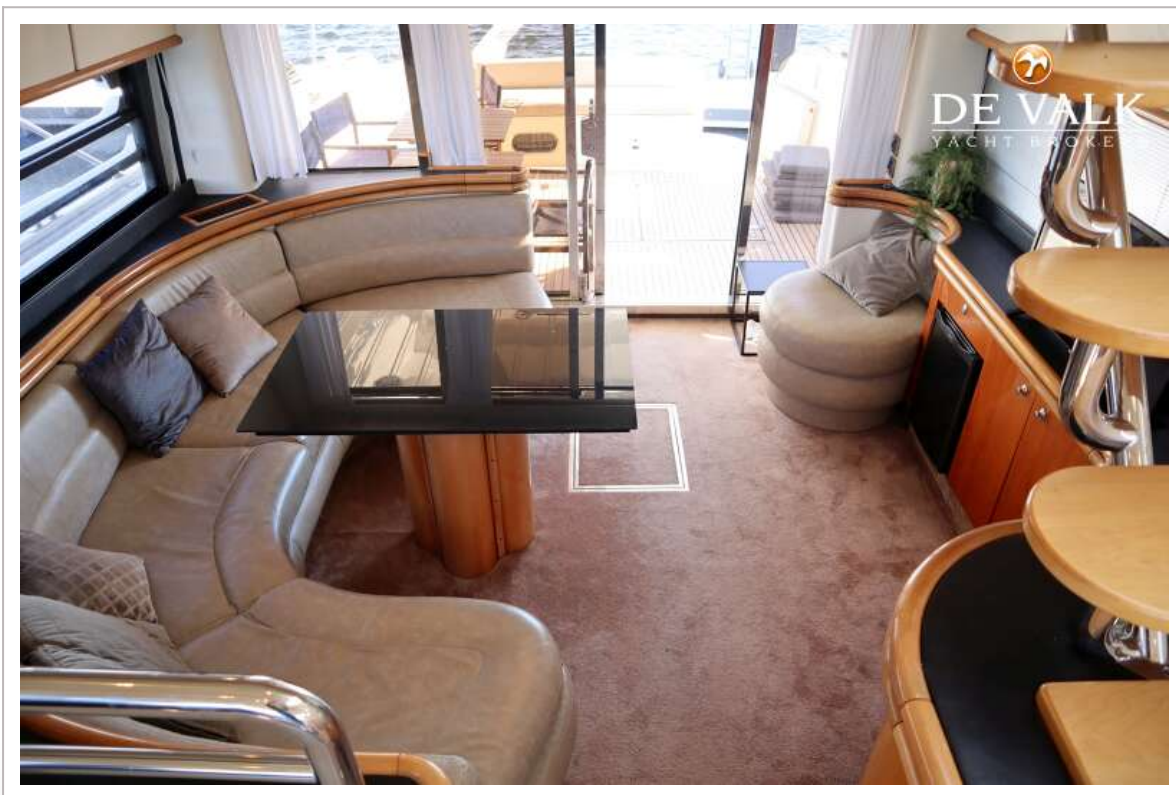
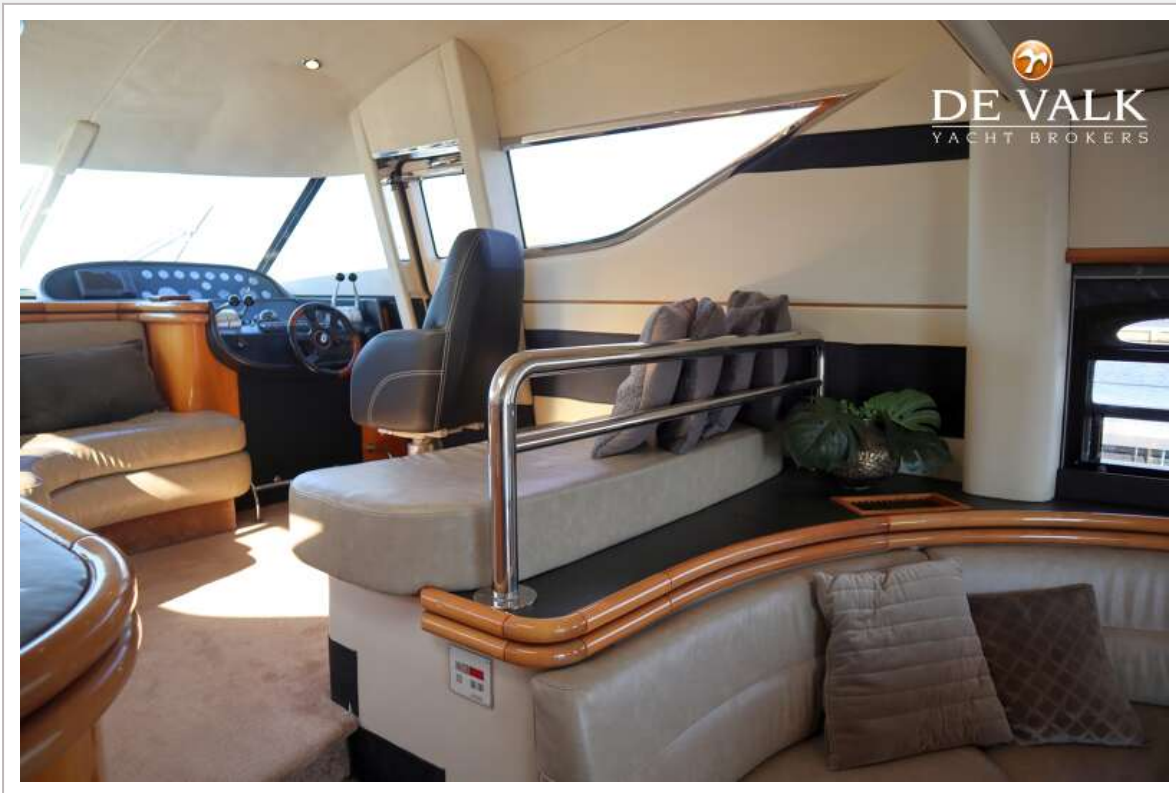
# SUNSEEKER MANHATTAN 62



# SUNSEEKER MANHATTAN 62



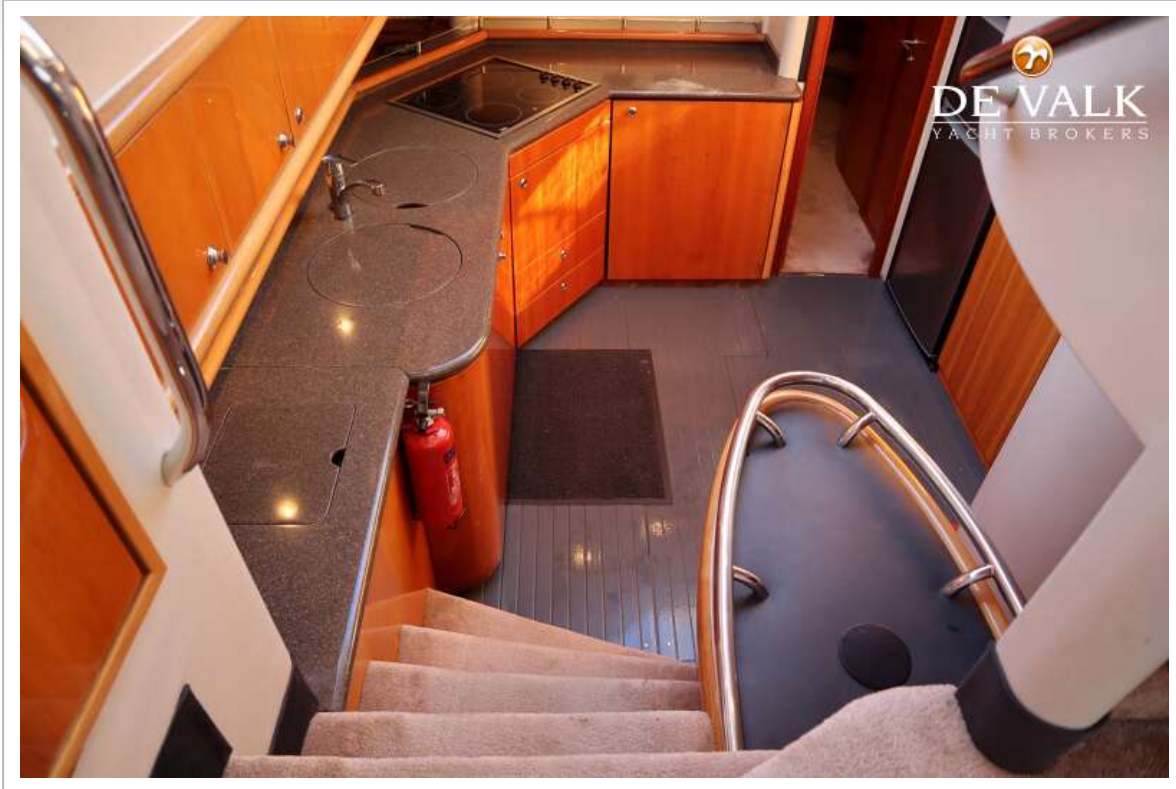
# SUNSEEKER MANHATTAN 62



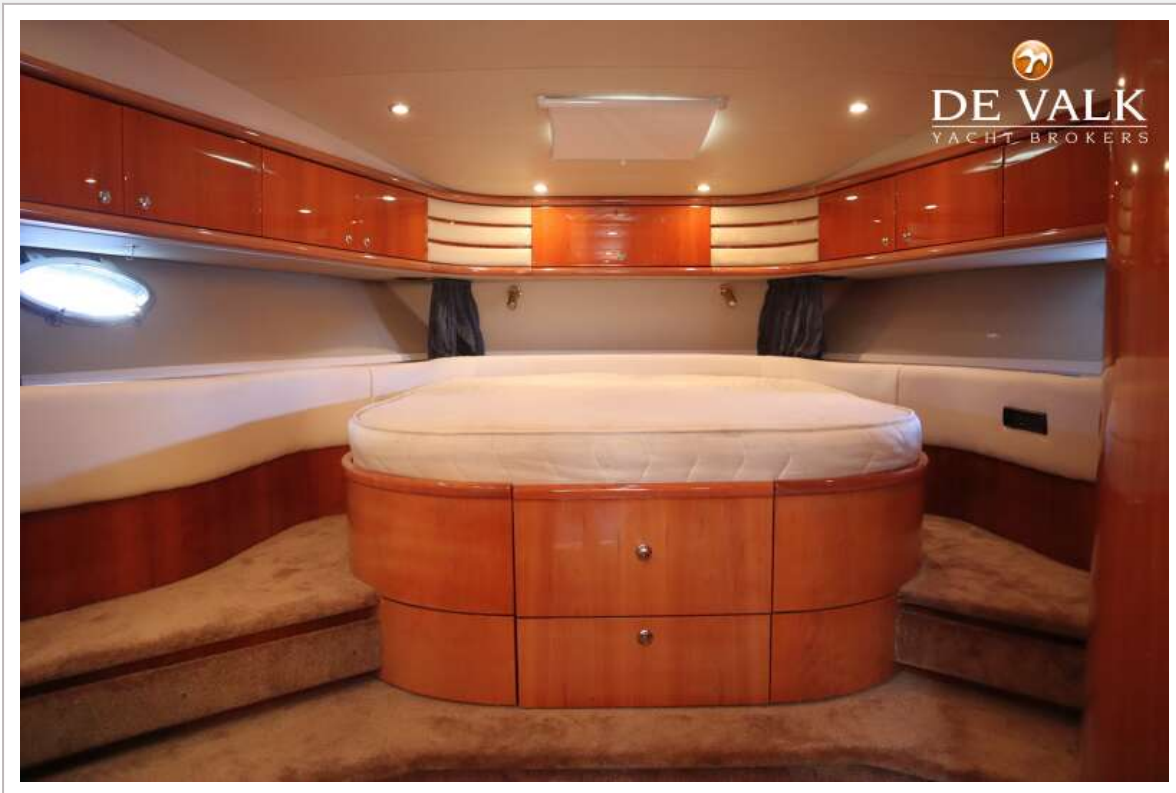
# SUNSEEKER MANHATTAN 62



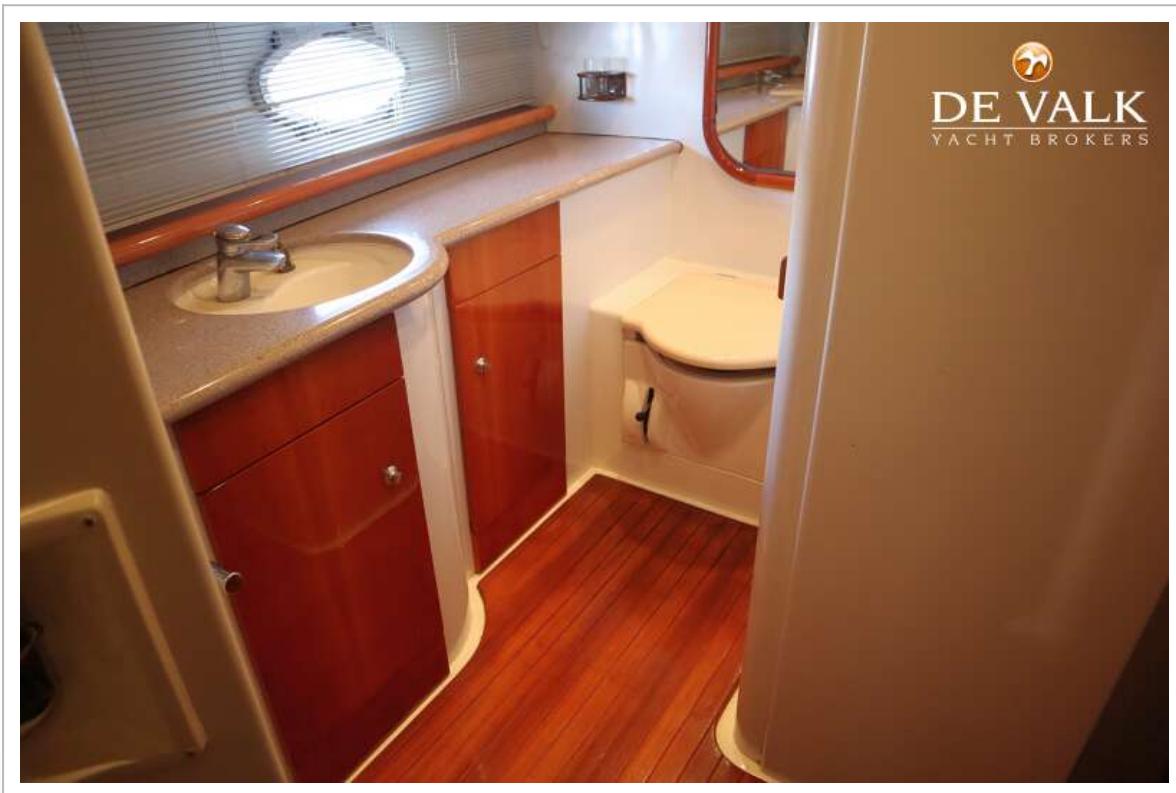
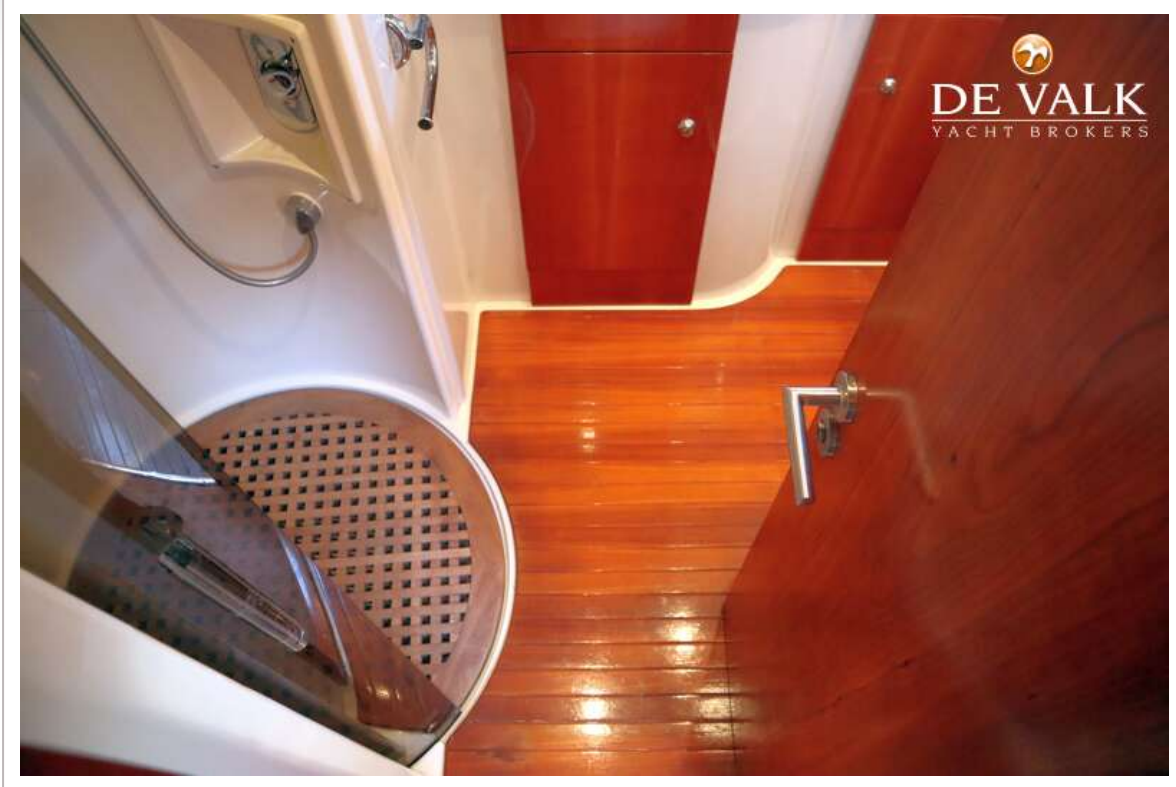
# SUNSEEKER MANHATTAN 62



# SUNSEEKER MANHATTAN 62

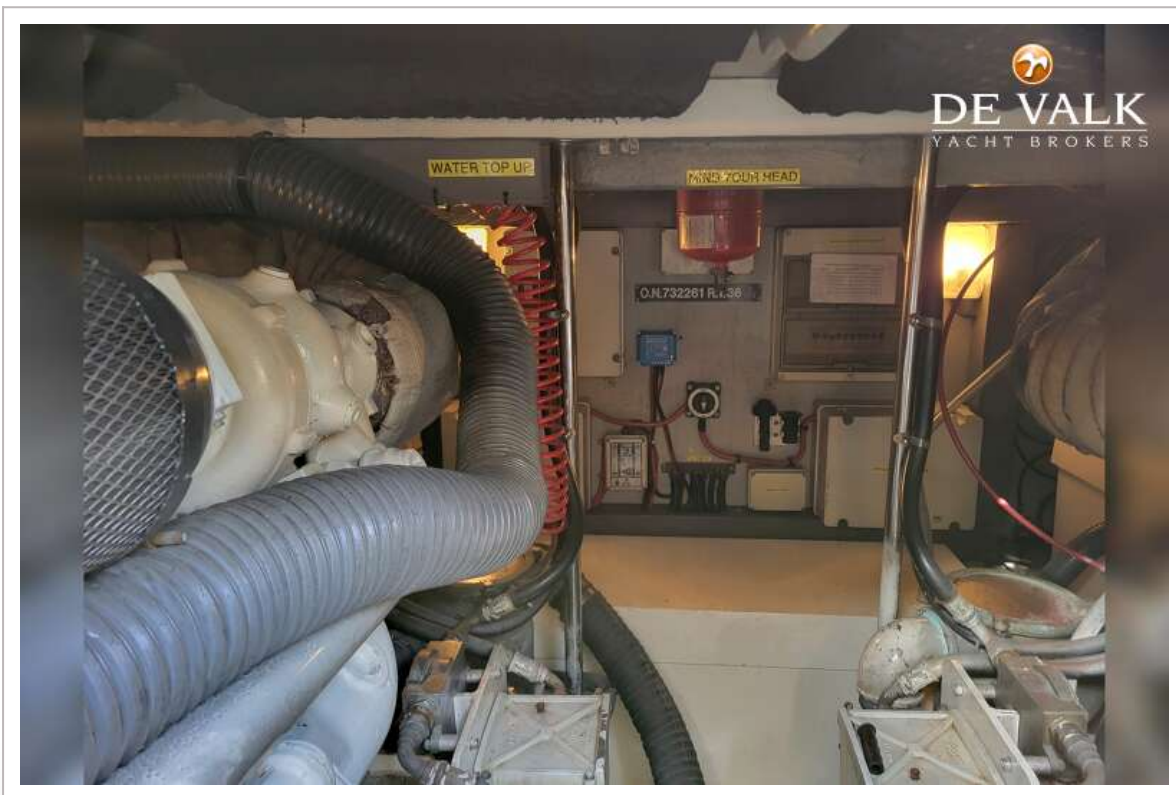
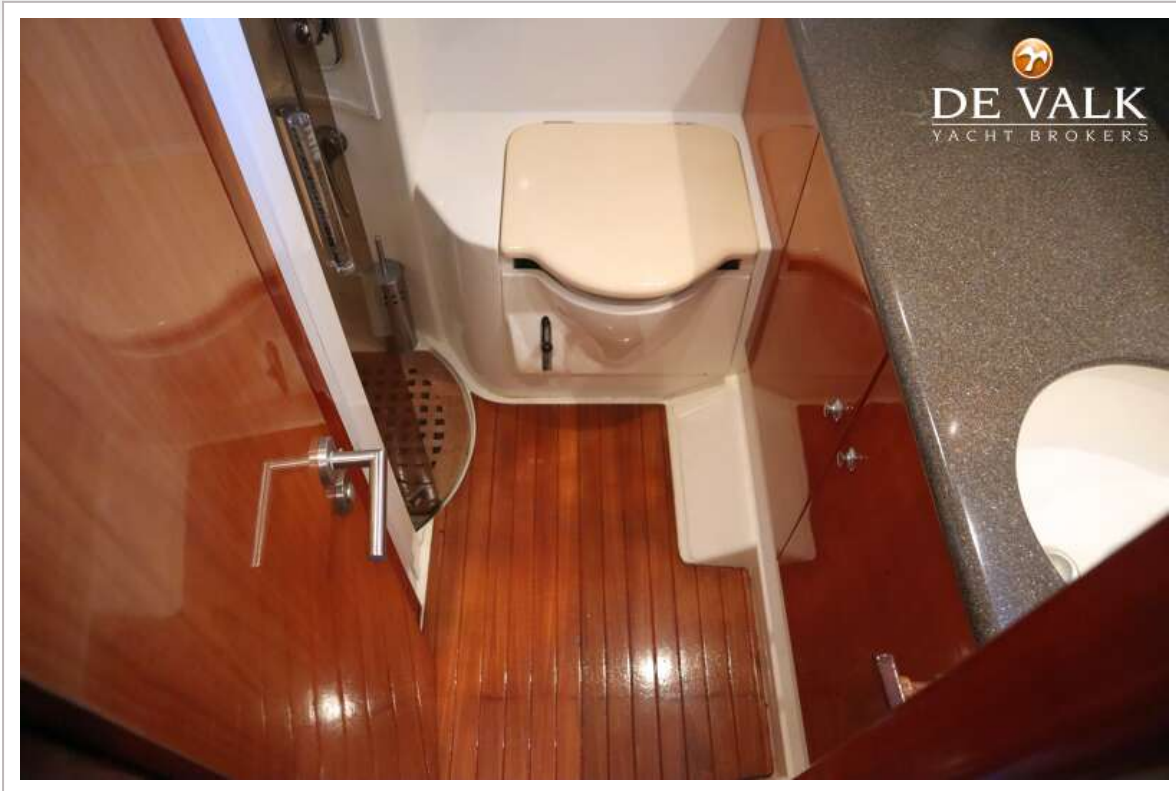


# SUNSEEKER MANHATTAN 62

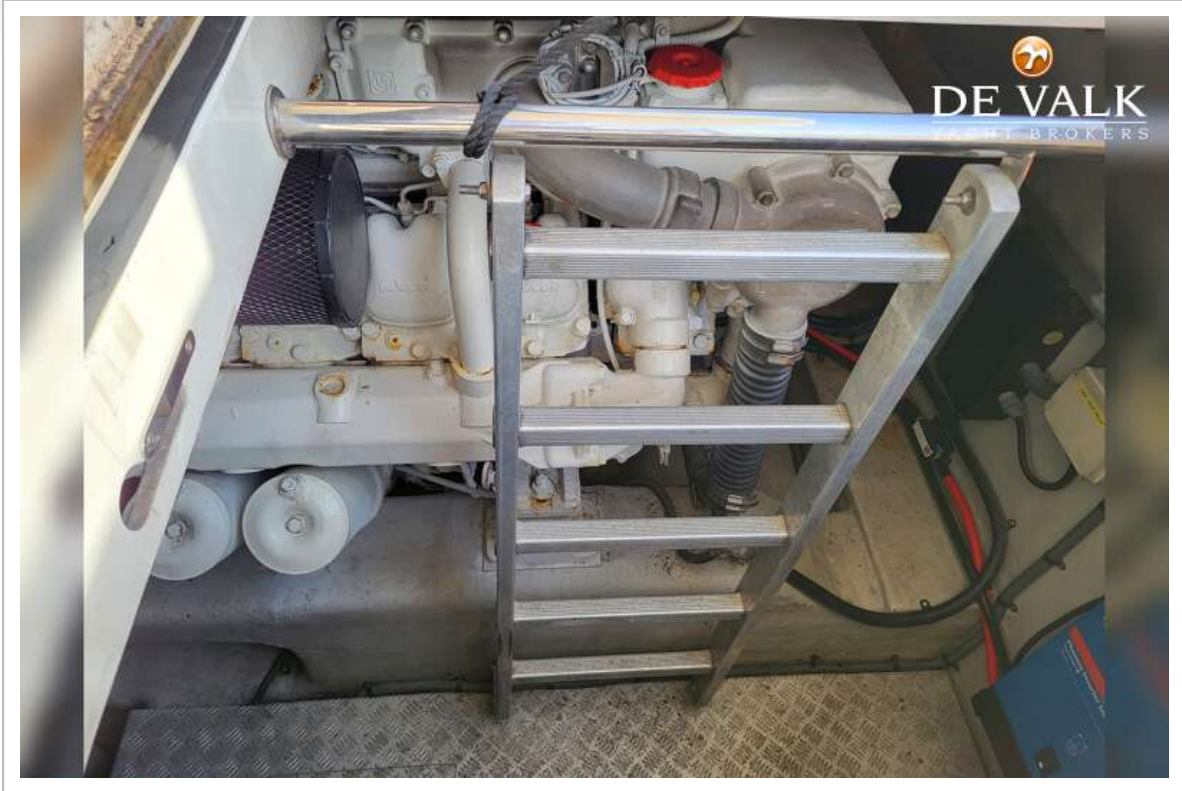


# SUNSEEKER MANHATTAN 62





# SUNSEEKER MANHATTAN 62



# SUNSEEKER MANHATTAN 62

