



DE VALK  
YACHT BROKERS



## SUCCES 115 ULTRA



DE VALK  
YACHT BROKERS

# SUCCES 115 ULTRA

## BROKER'S COMMENTS

This Succes 115 Ultra is a solidly built and comfortable motor yacht with excellent cruising characteristics. The vessel is in good condition and reflects the solid quality the brand is known for. Thanks to its reliable technology, this yacht is perfectly suited for both relaxed day trips and longer stays on board. She cruises steadily, holds her course well and is easy to manoeuvre with bow and stern thruster. The spacious aft deck offers a wonderful place to enjoy the views while cruising or when moored in the marina. Inside, you will find a warm and practical interior with plenty light.

*Jeanne Stukstette*

## SPECIFICATIONS

<b>Dimensions</b>	11.50 x 3.85 x 0.95 (m)	<b>Builder</b>	Succes
<b>Built</b>	2001	<b>Cabins</b>	2
<b>Material</b>	Steel	<b>Berths</b>	6
<b>Engine(s)</b>	1 x Iveco 8061M14 diesel	<b>Hp/Kw</b>	145.00 (hp), 106.72 (kw)
<b>Asking price</b>	Under Offer (VAT )	<b>Lying</b>	at sales office

## CONTACT

<b>Sales office</b>	De Valk Limburg	<b>Telephone</b>	+31 630372559
<b>Address</b>	Schippersveld 3 6019 DE Wessem NL	<b>E-mail</b>	limburg@devalk.nl

## DISCLAIMER

These particulars are given in good faith as supplied but cannot be guaranteed.



# SUCCES 115 ULTRA

## GENERAL

<b>Model</b>	SUCCES 115 ULTRA
<b>Type</b>	motor yacht
<b>LOA (m)</b>	11,50
<b>Beam (m)</b>	3,85
<b>Draft (m)</b>	0,95
<b>Air draft (m)</b>	2,70
<b>Headroom (m)</b>	1,95
<b>Year built</b>	2001
<b>Builder</b>	Succes
<b>Country</b>	The Netherlands
<b>Displacement (t)</b>	10
<b>CE norm</b>	C
<b>Hull material</b>	steel
<b>Hull colour</b>	white
<b>Hull thickness (mm)</b>	4mm
<b>Hull shape</b>	hard chine
<b>Keel type</b>	long keel
<b>Superstructure material</b>	steel
<b>Superstructure (mm)</b>	3 a 4 mm
<b>Rubbing strake</b>	rubber
<b>Deck finish</b>	non-skid paint
<b>Superstructure deck finish</b>	non-skid paint
<b>Cockpit deck finish</b>	non-skid paint
<b>Antifouling (year)</b>	2021
<b>Dorades</b>	yes
<b>Window frame</b>	aluminium
<b>Window material</b>	tempered glass
<b>Deckhatch</b>	3
<b>Portholes</b>	yes
<b>Insulation</b>	yes



# SUCCESS 115 ULTRA

<b>Mast can be lowered</b>	manual
<b>Fuel tank (litre)</b>	steel 600
<b>Level indicator (fuel tank)</b>	yes
<b>Freshwater tank (litre)</b>	500
<b>Blackwater tank (litre)</b>	250
<b>Blackwater tank extraction</b>	deck extraction + pump
<b>Wheel steering</b>	hydraulic

## ACCOMMODATION

<b>Cabins</b>	2
<b>Berths</b>	6
<b>Floor</b>	carpet
<b>Aft deck</b>	yes
<b>Heating</b>	diesel ducted hot air WEBASTO AIR TOP 5000
<b>Dinette to convert into berth</b>	yes
<b>Opening door to aft deck</b>	yes
<b>Sink</b>	stainless steel
<b>Cooker</b>	calor gas SPINFLO 4x
<b>Extractor</b>	yes
<b>Microwave</b>	yes
<b>Fridge</b>	COOLMATIC MDC 90
<b>Freezer</b>	yes
<b>Hot water system</b>	220V SIGMAR MARINE
<b>Water pressure system</b>	electrical
<b>Owners cabin</b>	double bed
<b>Bed length (m)</b>	1,50x1,95
<b>Wardrobe</b>	yes
<b>Toilet</b>	separate
<b>Toilet system</b>	manual
<b>Wash basin</b>	at the toilet
<b>Shower</b>	separate



# SUCCES 115 ULTRA

<b>Guest cabin 1</b>	twin single
<b>Bed length (m)</b>	2x 0,80x2,00
<b>Wardrobe</b>	shelves
<b>Toilet</b>	en suite
<b>Toilet system</b>	manual
<b>Wash basin</b>	at the toilet

## MACHINERY

<b>No of engines</b>	1
<b>Make</b>	Iveco
<b>Type</b>	8061M14
<b>HP</b>	145
<b>kW</b>	106.72
<b>Fuel</b>	diesel
<b>Year installed</b>	2001
<b>Engine hours</b>	2000
<b>Engine cooling system</b>	freshwater heat exchanger
<b>Drive</b>	shaft
<b>Shaft seal</b>	yes
<b>Engine controls</b>	bowden cable
<b>Bowthruster</b>	electric 80 kgf
<b>Sternthruster</b>	electric
<b>Electric bilge pump</b>	yes
<b>Start battery</b>	2025
<b>Service battery</b>	yes
<b>Bowthruster battery</b>	26
<b>Sternthruster battery</b>	26
<b>Battery monitor</b>	yes
<b>Battery charger/inverter</b>	VICTRON ENERGY MULTIPLUS 12/2000/80
<b>Shorepower</b>	with cable



## NAVIGATION

Compass	Raytheon ST60
Depth sounder	Raytheon ST60 Tridata
Depth sounder/log	Raytheon
Fish finder	GARMIN
VHF	Shipmate RS8400
Rudder angle indicator	yes
Navigation lights	yes
Searchlight	yes

## EQUIPMENT

Fixed windscreen	yes
Sprayhood	2025
Cockpit cover	2025
Sun awning	MAGNETIC
Bathing platform	yes
Boarding ladder	yes
Transom door	yes
Anchor	yes
Windlass	electrical VETUS
Davits	aluminum
Davits controls	manual
Sea railing	stainless steel
Grab rail (superstructure)	stainless steel
Railing side opening gates	yes
Pushpit	yes
Lifejackets	yes
Wiper	3x
Horn	yes
Fenders	yes
Mooring lines	yes



# SUCCES 115 ULTRA

<b>Spare parts</b>	yes
<b>Cockpit speakers</b>	yes
<b>Extra info</b>	Owner's boat, never used for charter



# SUCCES 115 ULTRA



# SUCCES 115 ULTRA



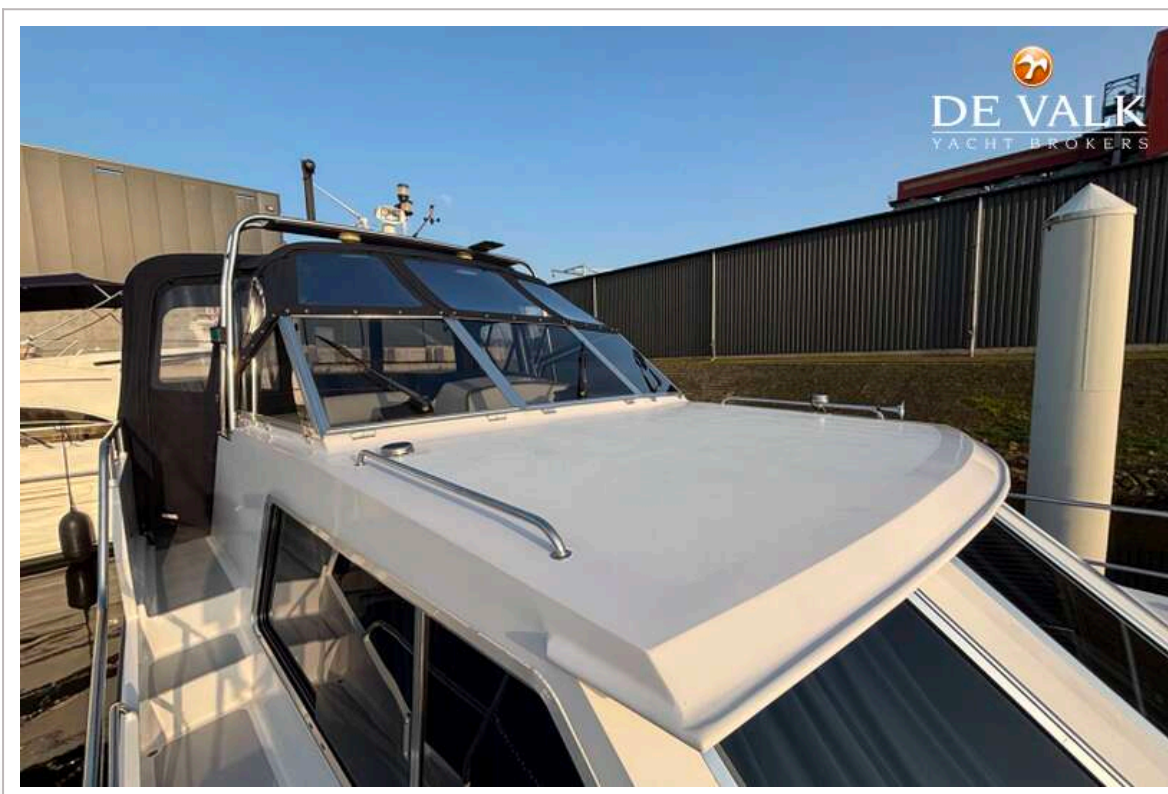
# SUCCES 115 ULTRA



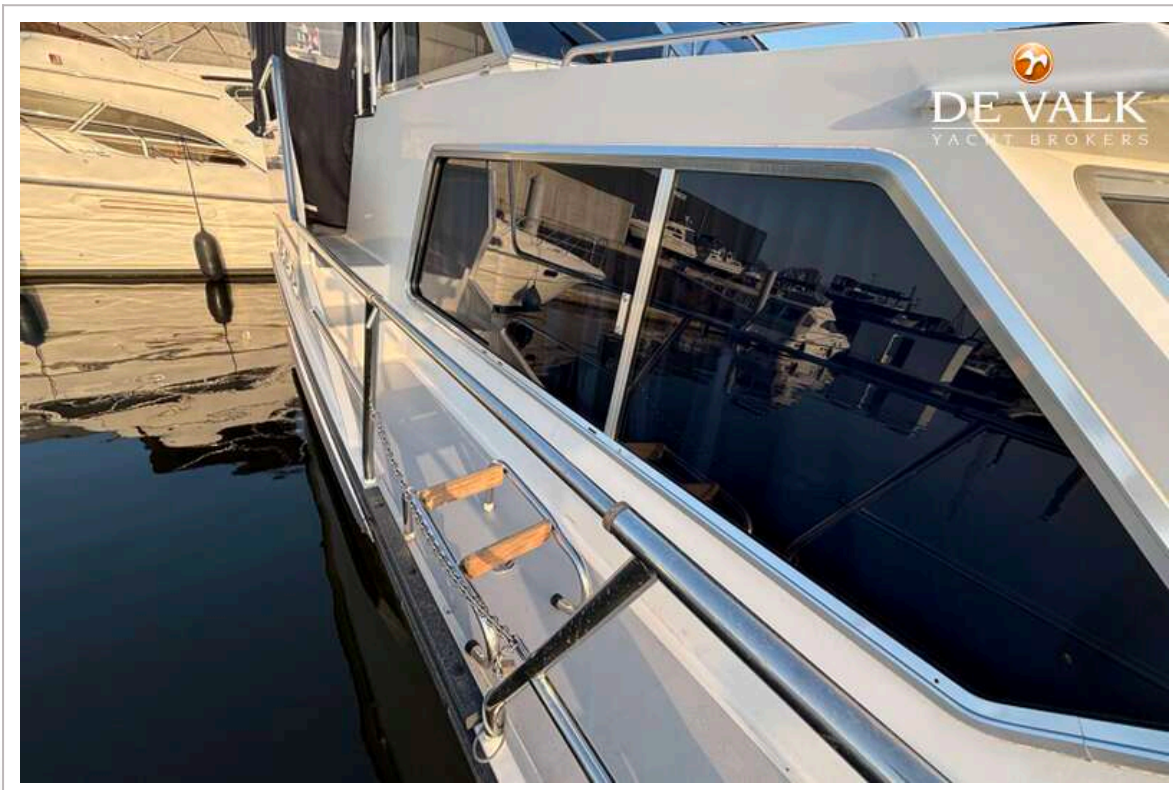
# SUCCES 115 ULTRA



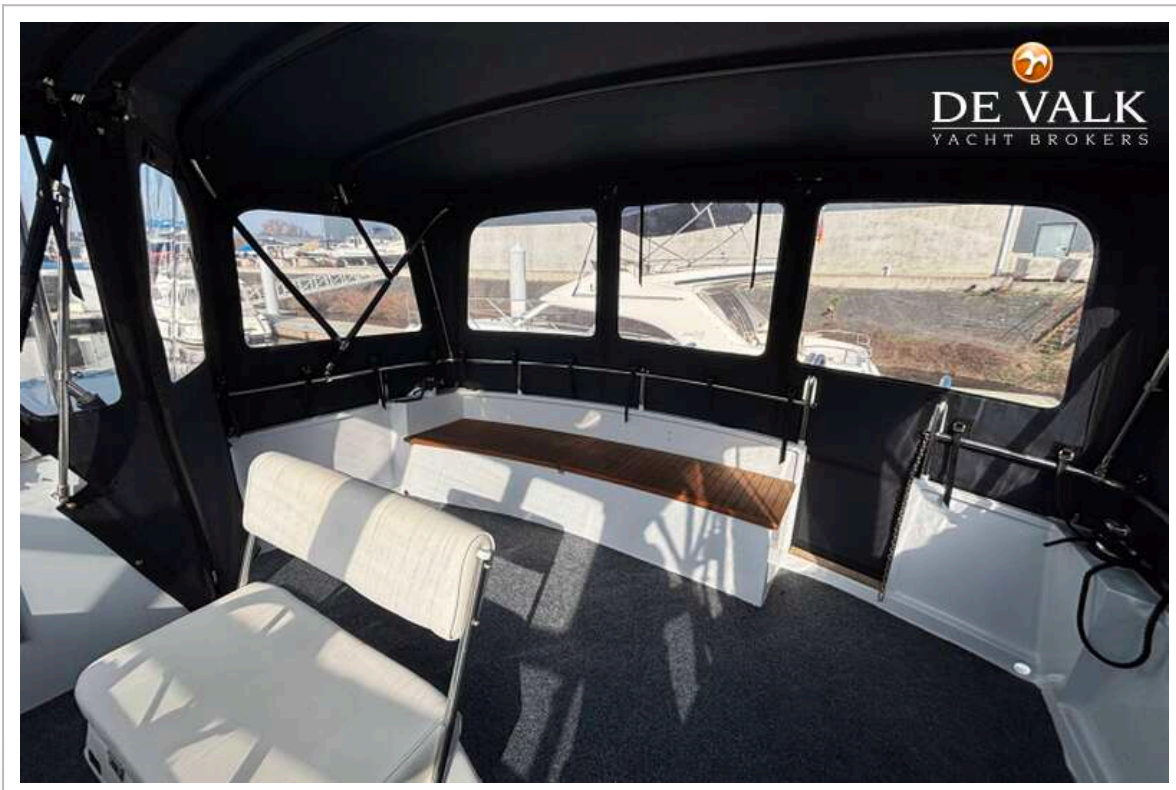
# SUCCES 115 ULTRA



# SUCCES 115 ULTRA



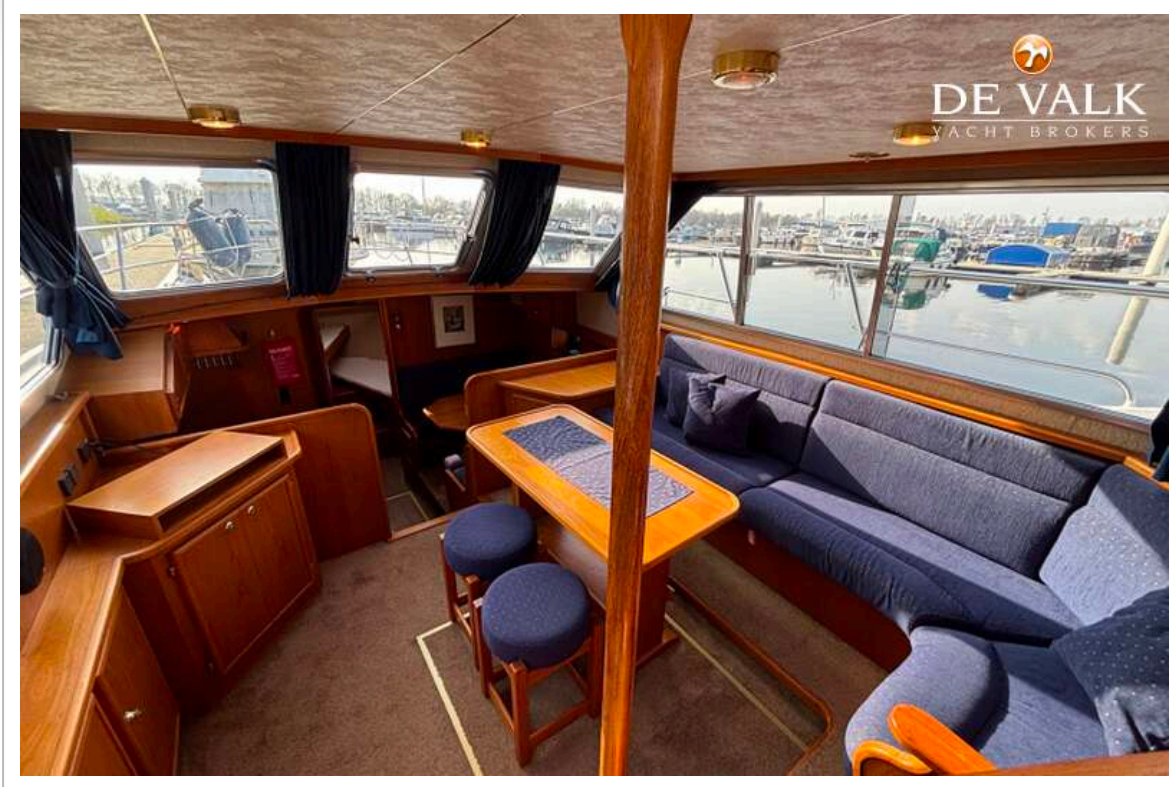
# SUCCES 115 ULTRA



# SUCCES 115 ULTRA



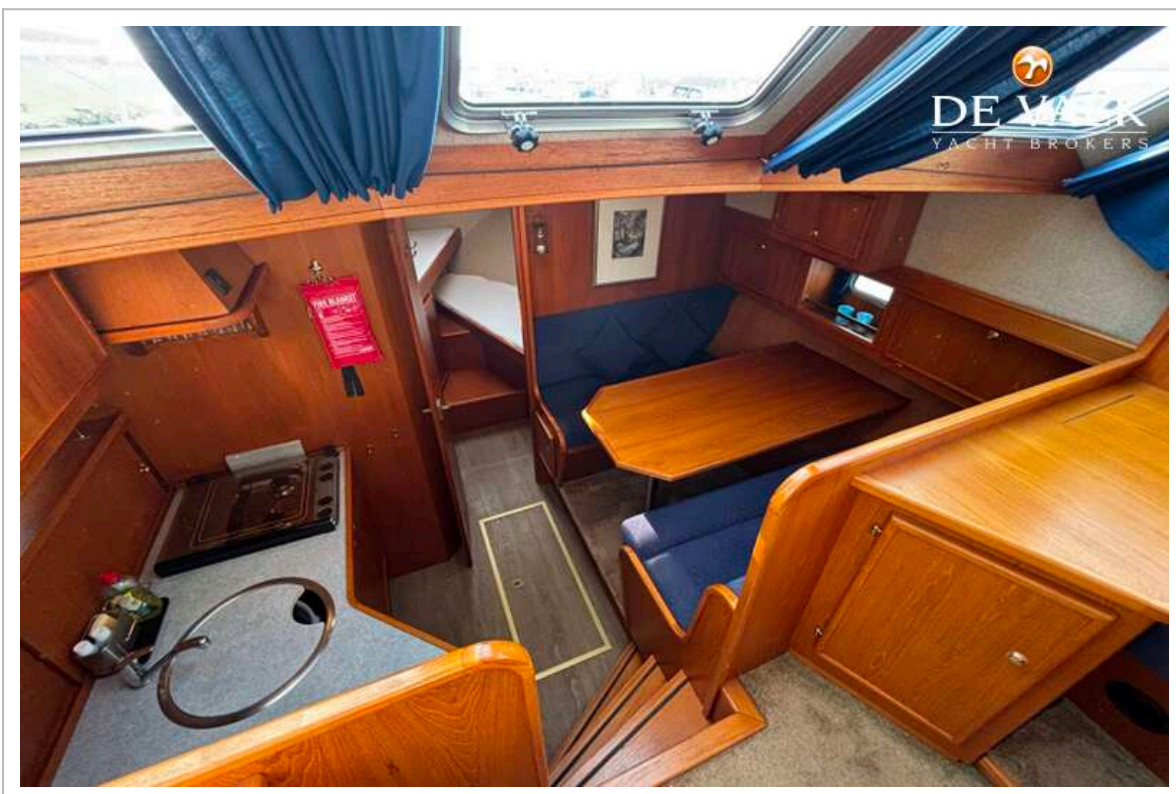
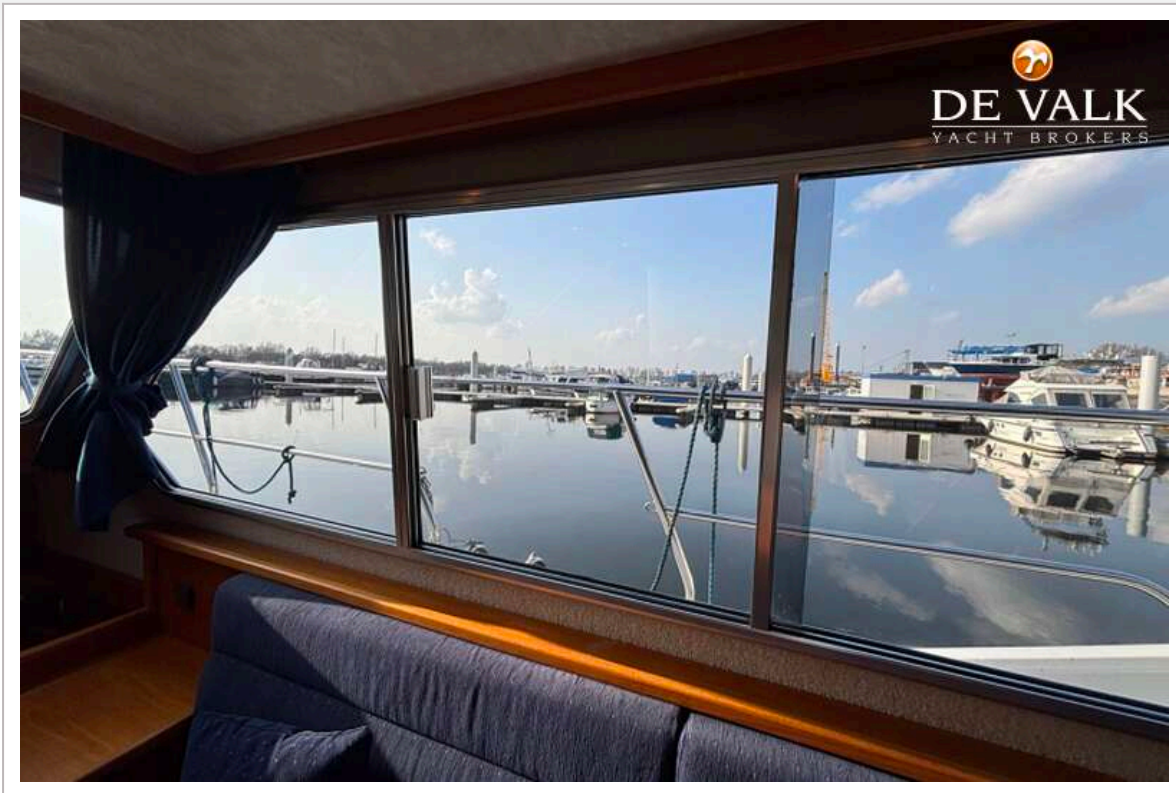
# SUCCES 115 ULTRA



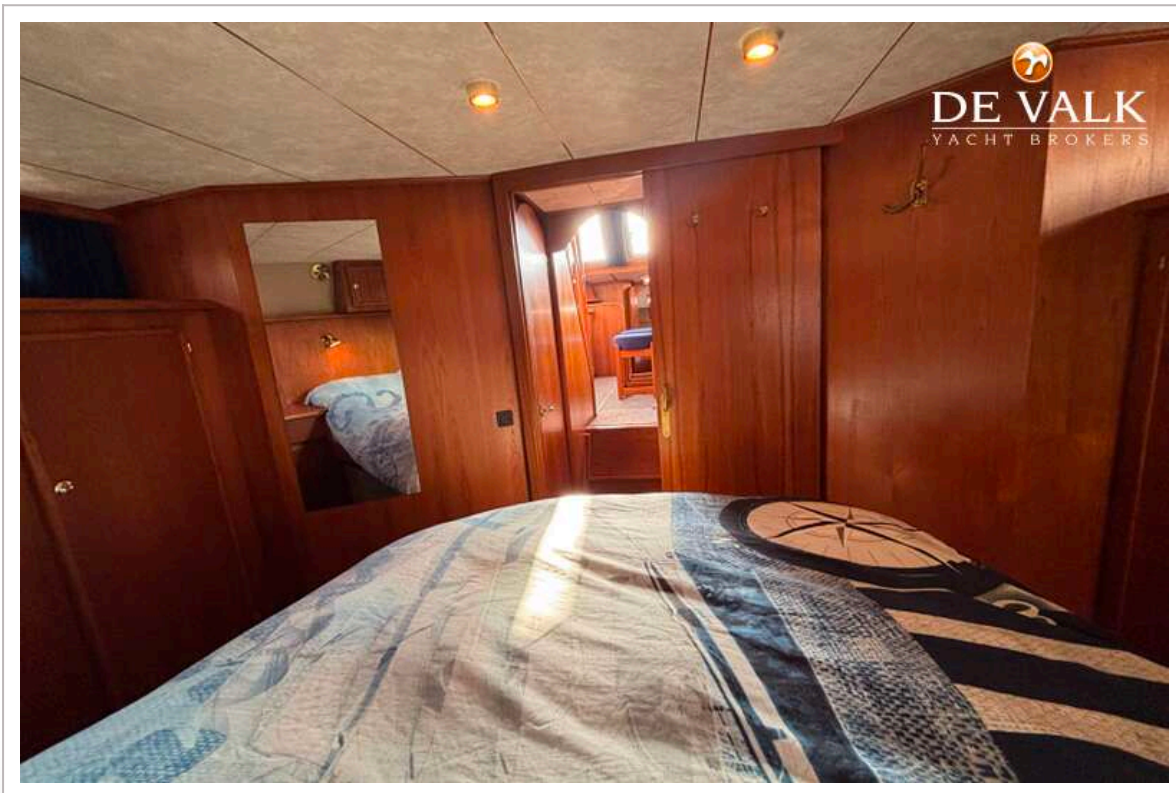
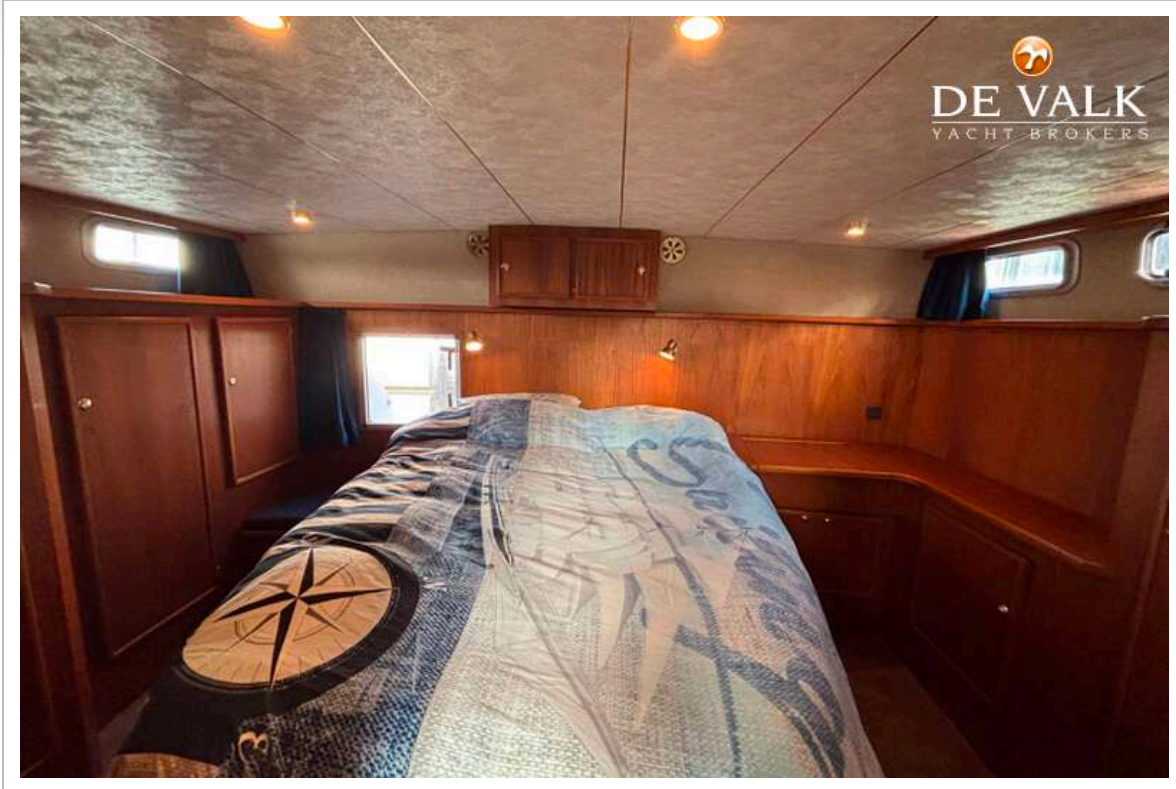
# SUCCES 115 ULTRA



# SUCCES 115 ULTRA



# SUCCES 115 ULTRA



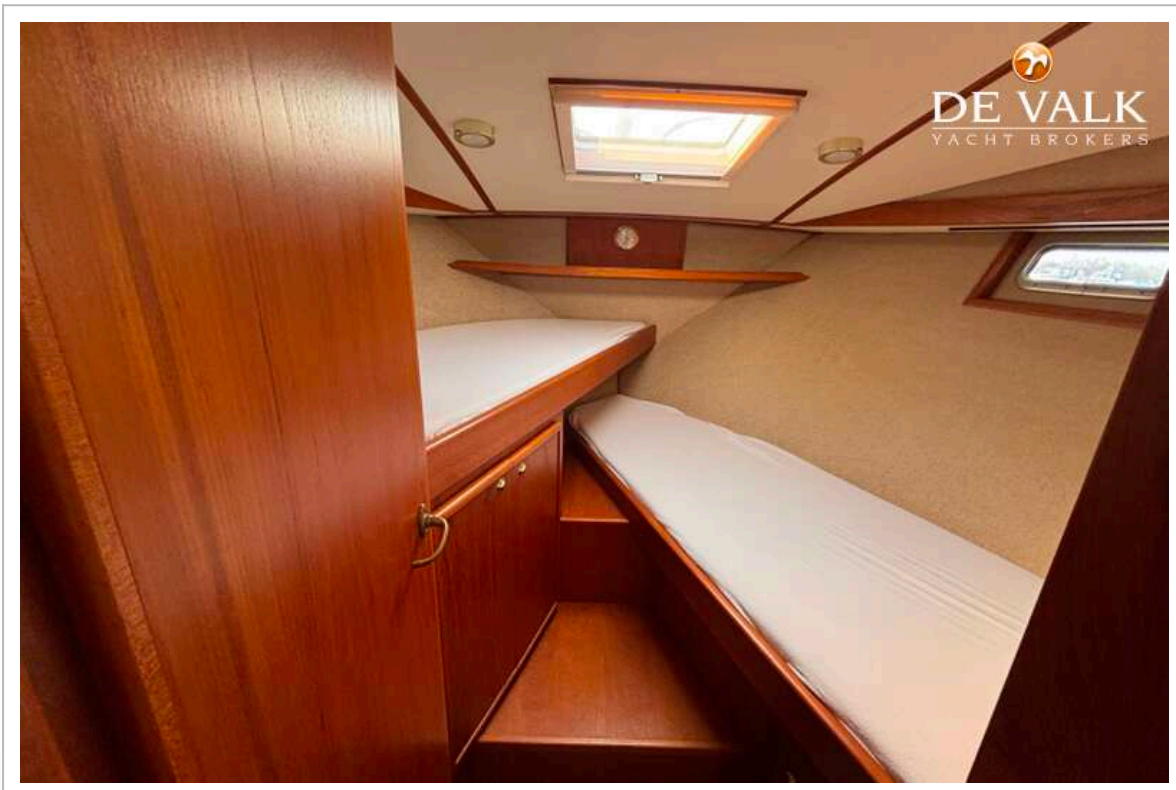
# SUCCES 115 ULTRA



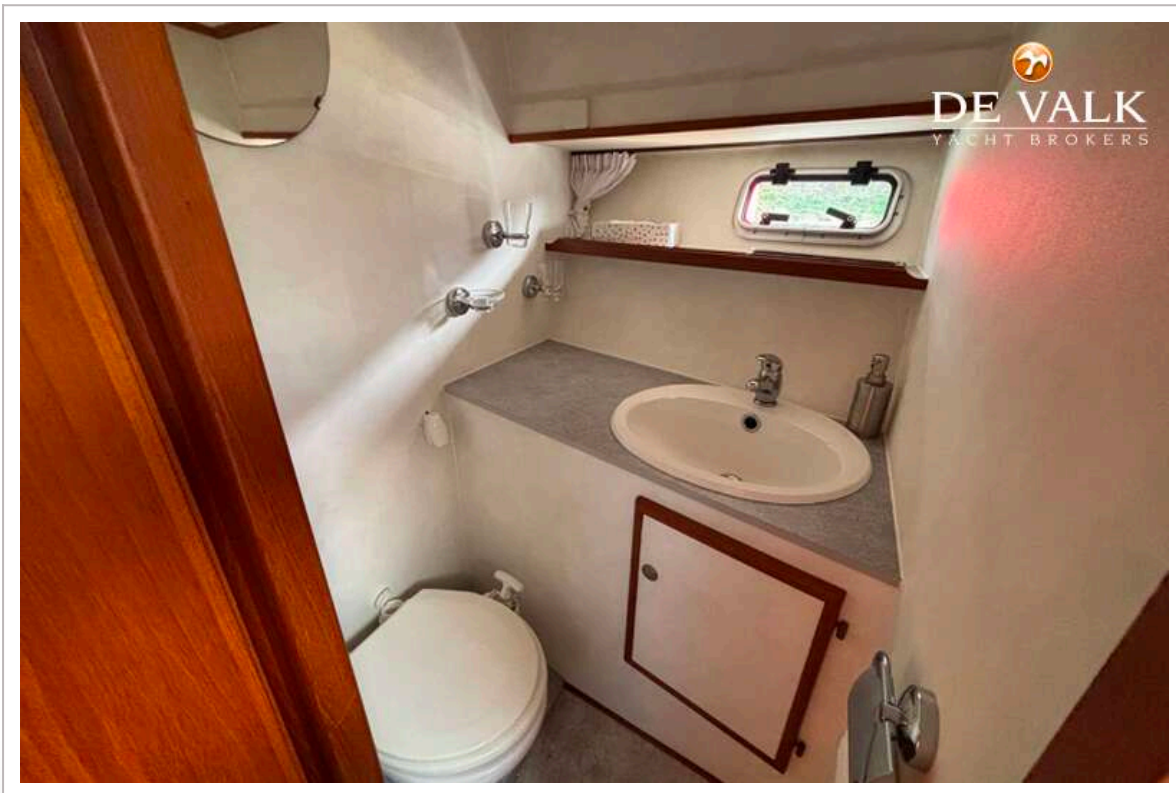
# SUCCES 115 ULTRA



# SUCCES 115 ULTRA



# SUCCES 115 ULTRA



# SUCCES 115 ULTRA



# SUCCES 115 ULTRA



# SUCCES 115 ULTRA



# SUCCES 115 ULTRA

