



DE VALK
YACHT BROKERS



HATTERAS 65 CONVERTIBLE



DE VALK
YACHT BROKERS

HATTERAS 65 CONVERTIBLE

BROKER'S COMMENTS

An iconic 65-foot American sportfisherman, the Hatteras 65 Convertible combines offshore performance, outstanding reliability, and cruising comfort. Her solid Hatteras construction with modified-V hull ensures a safe and powerful ride even in demanding sea conditions. Featuring a large fishing cockpit, a flybridge with excellent visibility and spacious interiors the boat has undergone in recent years an incredible series of upgrades and improvements, making her today ready for any use, from sport fishing to pure leisure cruising. A timeless classic of the American sportfishing tradition.

Nico Stillitano

SPECIFICATIONS

Dimensions	19.80 x 5.49 x 1.60 (m)	Builder	Hatteras
Built	1997	Cabins	4
Material	GRP	Berths	8
Engine(s)	2 x Caterpillar 3412 diesel	Hp/Kw	2 x 1,200.00 (hp), 883.20 (kw)
Asking price	€ 550.000 (VAT Paid)	Lying	Italy

CONTACT

Sales office	De Valk Rome	Telephone	+39 06 65 81221
Address	c/o Nautilus Marina Srl, Via Monte Cadria, 127 00054 Fiumicino Roma IT	E-mail	rome@devalk.nl

DISCLAIMER

These particulars are given in good faith as supplied but cannot be guaranteed.



HATTERAS 65 CONVERTIBLE

GENERAL

Model	HATTERAS 65 CONVERTIBLE
Type	motor yacht
LOA (m)	19,80
Beam (m)	5,49
Draft (m)	1,60
Year built	1997
Launched	1997
Builder	Hatteras
Country	U.S.A.
Designer	Jack Hargrave
Displacement (t)	46
CE norm	A
Hull material	GRP
Hull colour	White
Deck material	GRP
Antifouling (year)	2025
Window frame	stainless steel
Window material	polycarbonate
Portholes	stainless steel
Flybridge	Enclosed Bridge
Flybridge cover	Tuna Tower
Fuel tank (litre)	6.000 Lt.
Level indicator (fuel tank)	yes
Freshwater tank (litre)	1.650 Lt.
Level indicator (freshwater)	yes
Blackwater tank (litre)	380 Lt.
Blackwater tank extraction	yes
Inside helm position	yes
Outside helm position	yes
Flybridge helm position	yes



HATTERAS 65 CONVERTIBLE

More info on hull

Planing Hull, modified Deep-V; Solid fiberglass

Extra info

Extension of the flybridge hardtop by 1 meter and repositioning of the access ladder.

ACCOMMODATION

Cabins	4
Berths	8
Crew cabin	With toilet
Interior	oak
Layout	4 cabins and 3 toilets
Floor	teak and holly
Saloon	Lounge area with L-shaped sofa and arm chair
Heating	yes
Air-conditioning	reverse cycle airco
Navigation center	yes
Chart table	yes
Galley	Large and spacious integrated in the living area
Countertop	corian
Cooker	electric
Microwave/oven combi	yes
Fridge	yes
Freezer	yes
Hot water system	yes
Dishwasher	yes
Ice maker	yes
Waste compactor	yes
Owners cabin	double bed King size bed
Wardrobe	yes
Bathroom	en suite
Toilet	yes
Shower	yes



HATTERAS 65 CONVERTIBLE

Guest cabin 1	double bed Vip Cabin
Bathroom	en suite
Toilet	yes
Shower	yes
Guest cabin 2	French bed Double bed
Guest cabin 3	bunk bed
Bathroom	yes
Crew cabin(s)	yes
Bathroom (crew)	yes
Washing machine	yes
Dryer	yes
Extra info	Custom installation of a door providing access from the saloon to the deck
Extra info	New parquet flooring in the corridor, cabins and bathrooms, VIP cabin modification, new wardrobe in the VIP cabin, and replacement of the headliners

MACHINERY

No of engines	2
Make	Caterpillar
Type	3412
HP	1200
kW	883.20
Fuel	diesel
Year installed	1997
Maximum speed (kn)	32
Cruising speed (kn)	24
Consumption (l/hr)	380
Engine hours	1100
Drive	shaft
Engine controls	electrical & bowden cable
Gearbox	yes



HATTERAS 65 CONVERTIBLE

Bowthruster	hydraulic
Propeller shaft material	stainless steel
Electric bilge pump	yes
Bilge alarm	yes
Generator	wet exhaust 2 ONAN x 17,5 Kw
Batteries	10
Start battery	2 x Engine
Shorepower	with cable
Trimtabs	yes
Extra info	Between 2024 and 2025, the yacht underwent a major overhaul, including the generators, air-conditioning system, and replacement of all batteries.
Extra info	In 2025 a full engine service including replacement of all rubber hoses, and gearbox servicing.

NAVIGATION

Compass on flybridge	yes
Electric compass	yes
Multi control display	yes
Depth sounder	yes
Depth sounder/log	yes
Log	yes
VHF	2 Shipmate
Autopilot	yes
Radar	Garmin
Plotter/GPS	Garmin
AIS receiver	yes
Camera	yes
Navigation lights	yes
Searchlight	yes

EQUIPMENT



HATTERAS 65 CONVERTIBLE

Bathing platform	yes
Boarding ladder	yes
Gangway	yes
Anchor	yes
Anchor chain	yes
Chain counter	yes
Windlass	yes
Dinghy	yes
Life raft	yes
Lifejackets	yes
Binocular	yes
Fenders	yes
Mooring lines	yes
TV	yes
Radio	yes
DVD player	yes
Fire extinguisher	yes
Extinguisher in engine room	In 2025, a new fire suppression system



HATTERAS 65 CONVERTIBLE



HATTERAS 65 CONVERTIBLE



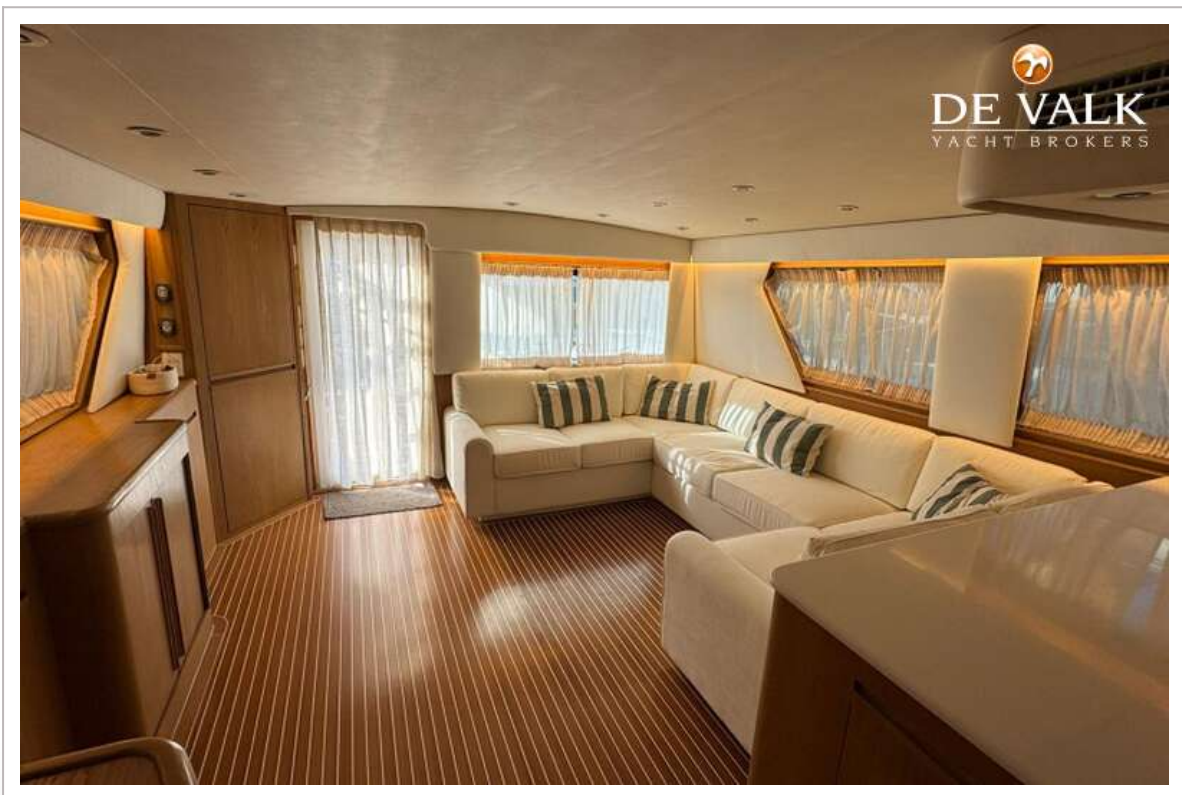
HATTERAS 65 CONVERTIBLE



HATTERAS 65 CONVERTIBLE



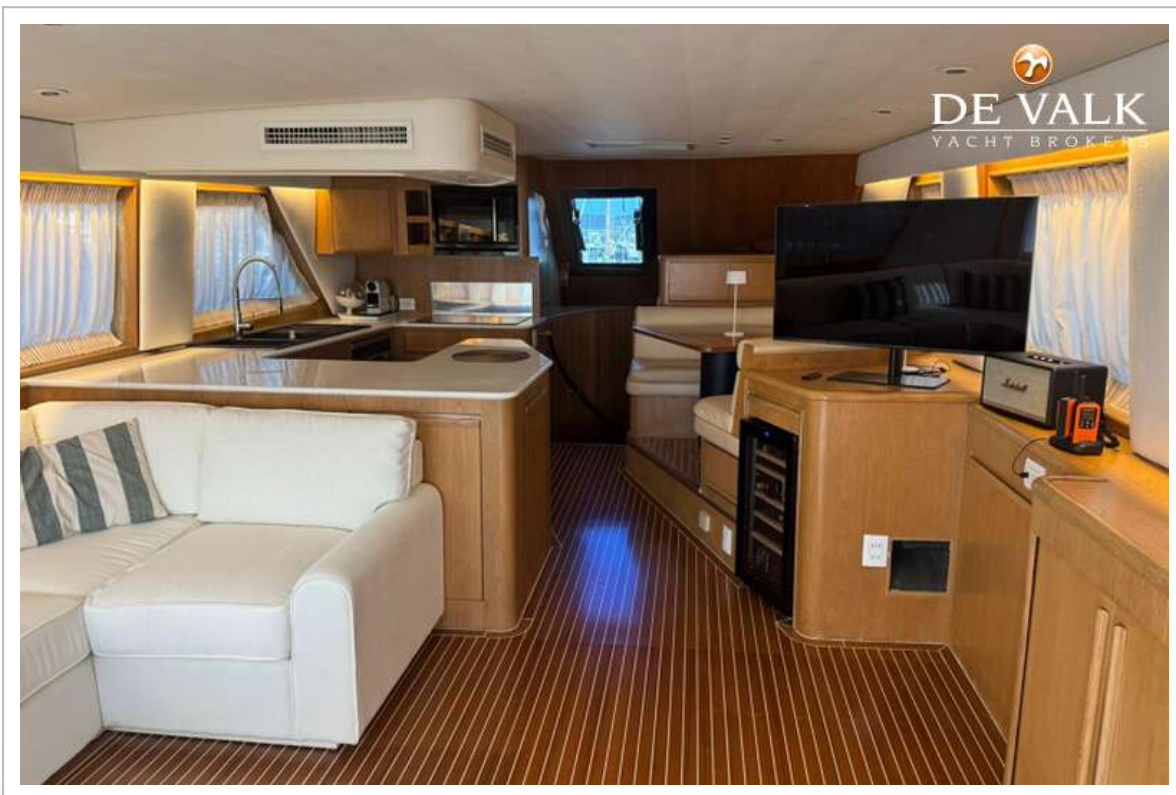
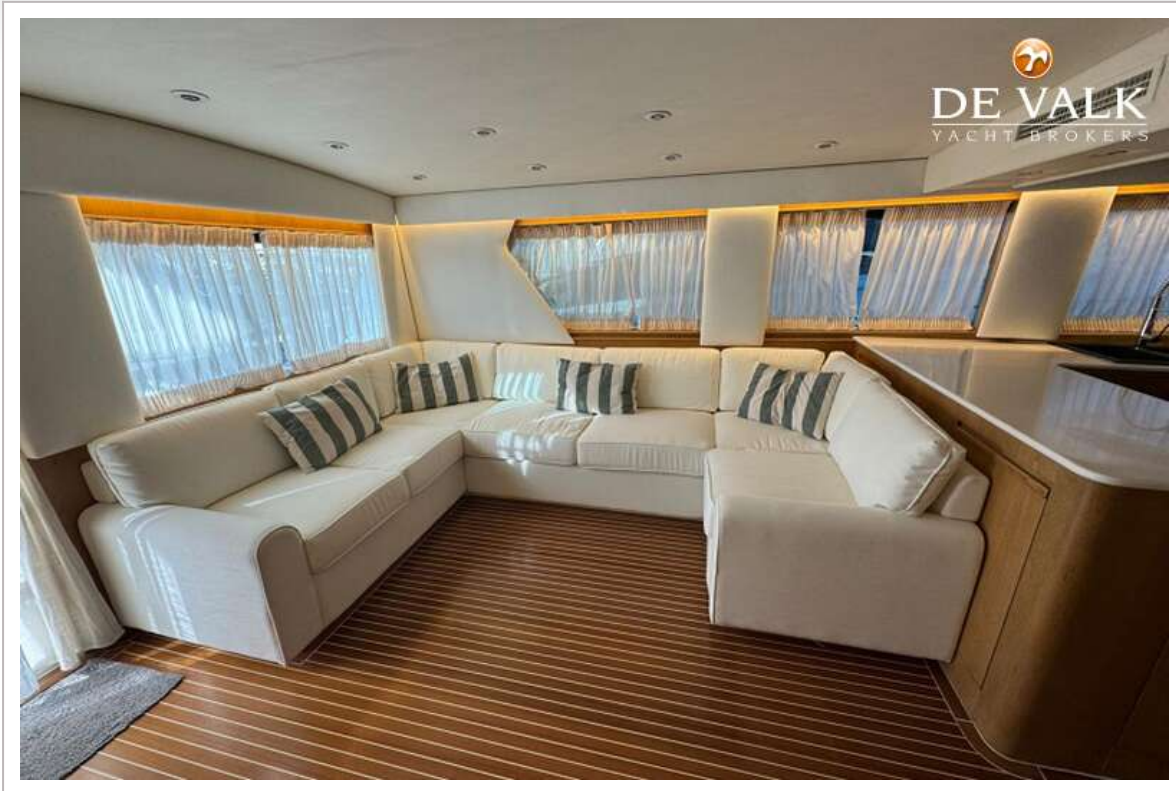
HATTERAS 65 CONVERTIBLE



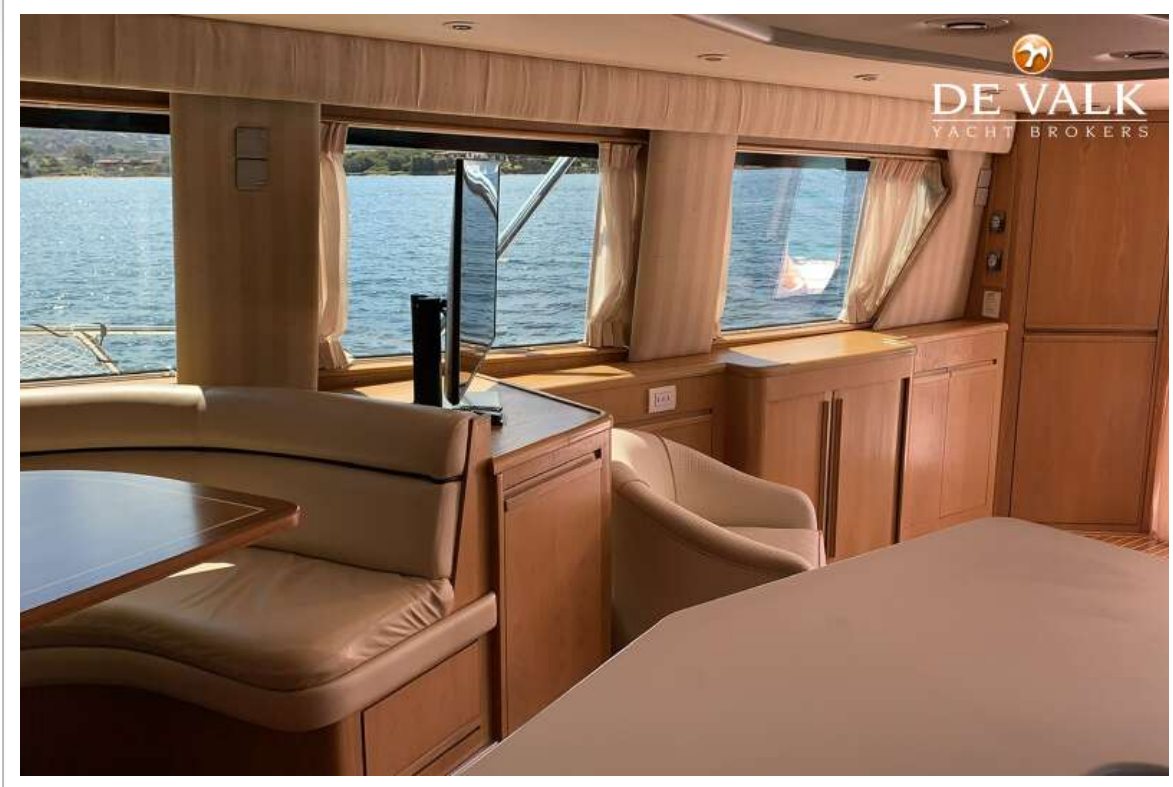
HATTERAS 65 CONVERTIBLE



HATTERAS 65 CONVERTIBLE



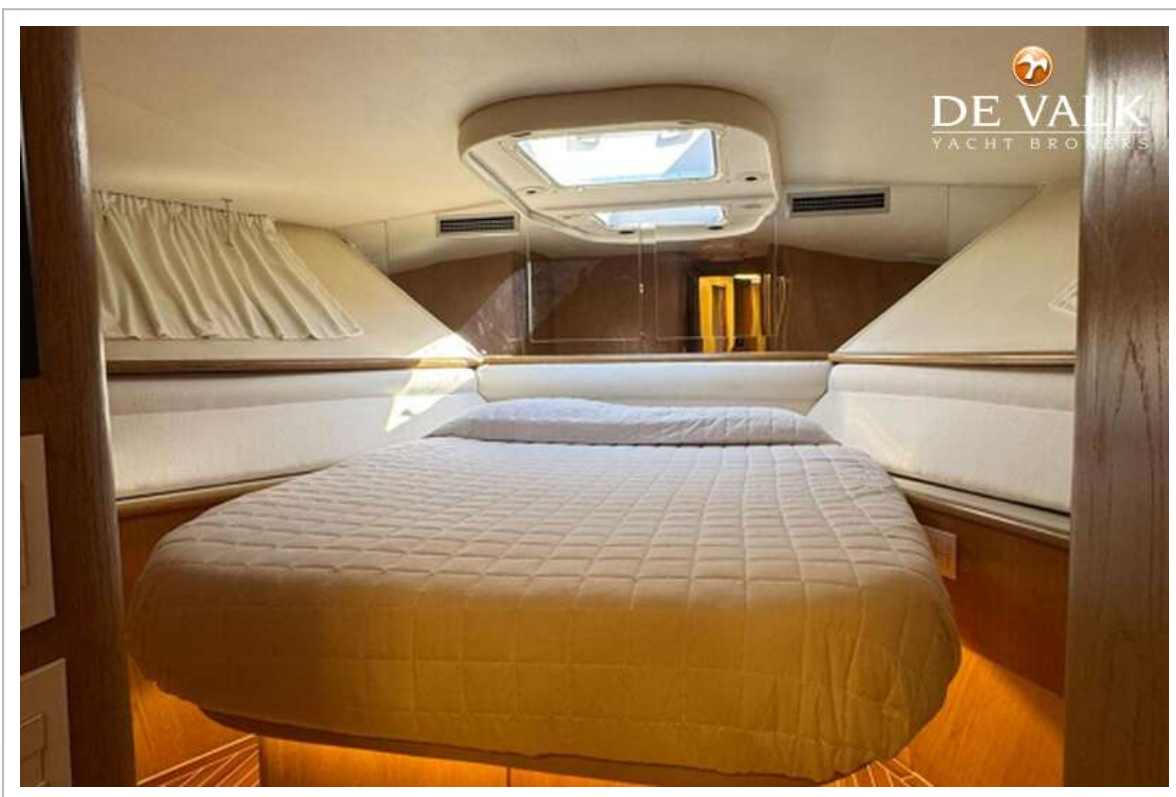
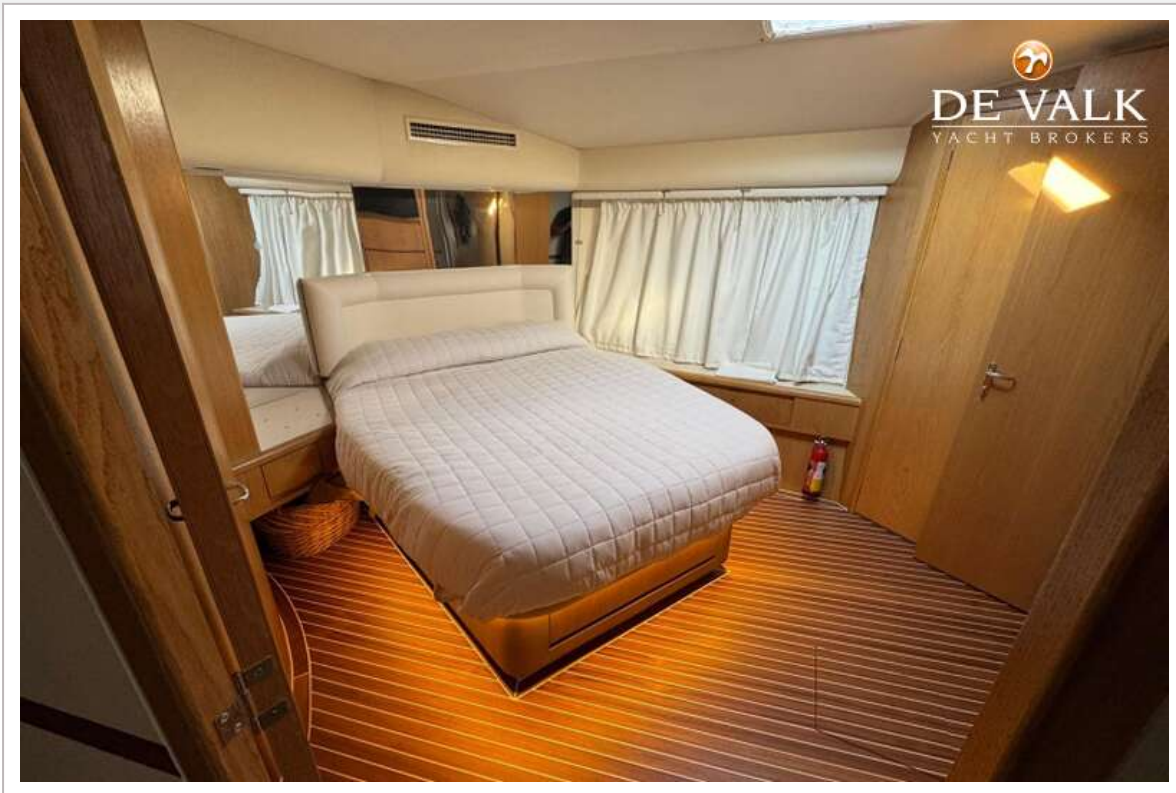
HATTERAS 65 CONVERTIBLE



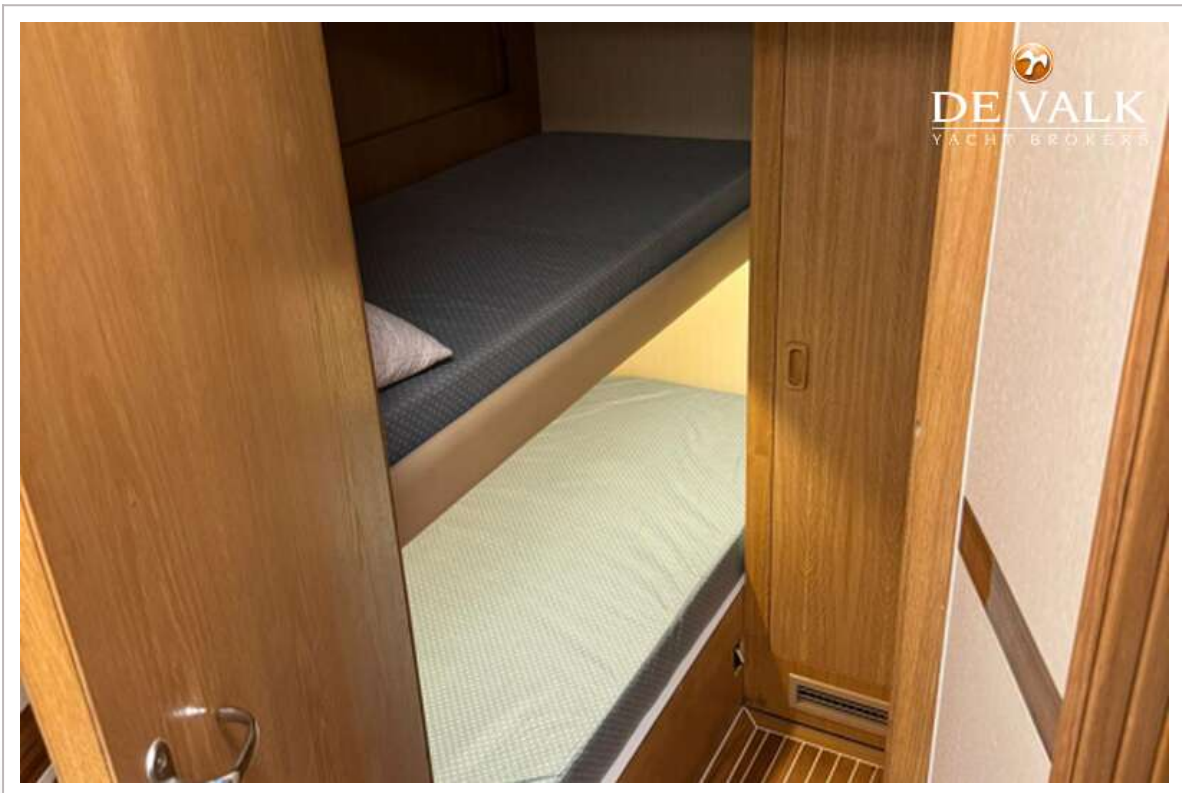
HATTERAS 65 CONVERTIBLE



HATTERAS 65 CONVERTIBLE



HATTERAS 65 CONVERTIBLE



HATTERAS 65 CONVERTIBLE



HATTERAS 65 CONVERTIBLE

