



DE VALK
YACHT BROKERS



AMEL SUPER MARAMU 2000



DE VALK
YACHT BROKERS

AMEL SUPER MARAMU 2000

BROKER'S COMMENTS

Looking for a sailing yacht with absolute autonomy? This Amel Super Maramu 2000 is a heavy-duty, overengineered ketch rig designed for safe blue-water cruising with a spectacular live-onboard layout. The boat has been seriously upgraded in 2024 with the latest in navigation and power equipment and new sails & rigging and has been carefully maintained and sailed in the Med the past years by a very experienced owner. Turnkey ready for the season.

Tue Simon Fasting

SPECIFICATIONS

Dimensions	15.97 x 4.60 x 1.60 (m)	Builder	Chantiers Amel
Built	1999	Cabins	2
Material	GRP	Berths	6
Engine(s)	1 x Volvo Penta TMD22 diesel	Hp/Kw	78.00 (hp), 57.41 (kw)
Asking price	€ 210.000 (VAT Paid)	Lying	at sales office

CONTACT

Sales office	De Valk Barcelona	Telephone	+34 932 202 825
Address	Barcelona region 08392 Barcelona ES	E-mail	barcelona@devalk.nl

DISCLAIMER

These particulars are given in good faith as supplied but cannot be guaranteed.



AMEL SUPER MARAMU 2000

GENERAL

Model	AMEL SUPER MARAMU 2000
Type	sailing yacht
LOA (m)	15,97
LWL (m)	12,60
Beam (m)	4,60
Draft (m)	1,60
Year built	1999
Builder	Chantiers Amel
Country	France
Designer	Henry Amel & J. Carteau
Displacement (t)	18,81
Ballast (tonnes)	cast iron
CE norm	A
Hull material	GRP
Hull colour	Broken white
Hull shape	Round-bilged displacement hull
Keel type	L-shaped keel with bulb
Superstructure material	GRP
Rubbing strake	rubber
Deck material	GRP
Deck finish	synthetic teak
Antifouling (year)	2026 Seahawk Tropikote
Window frame	aluminium
Deckhatch	yes
Portholes	yes
Insulation	yes
Fuel tank (litre)	stainless steel 600
Level indicator (fuel tank)	yes
Freshwater tank (litre)	1000
Level indicator (freshwater)	yes



AMEL SUPER MARAMU 2000

Blackwater tank (litre)	2 X 60
Level indicator (blackwater)	yes
Blackwater tank extraction	deck extraction + pump
Emergency tiller	yes
More info on paintwork	Awl grip 2024

ACCOMMODATION

Cabins	2
Berths	6
Layout	Centre cockpit with 2 cabins and 2 bathrooms and 6 berths
Floor	Anti-slip and teak
Saloon	New leatherwork ceilings and walls with new cushions
Heating	Webasto Eberspacher D5L (2024)
Air-conditioning	Climma 9000 BTU 3 units (refurbished 2024)
Chart table	Stbd side salon
Aft Cabin	yes
Convertible berth	In salon 2
Galley	U-shaped port side salon
Countertop	yes
Sink	stainless steel
Cooker	yes
Oven	Force 10
Fridge	Philips with Wento compressor
Freezer	Wento
Wine cooler	yes
Hot water system	220V + engine Boiler refurbished 2024
Water pressure system	electrical Amfa 66 Fresh (refurbished 2024)
Ice maker	Isoterm
Coffee maker	Nespresso
Owners cabin	double bed
Wardrobe	hanging/drawers/shelves



AMEL SUPER MARAMU 2000

Bathroom	en suite
Toilet	yes
Wash basin	yes
Shower	yes
Guest cabin 1	v-bed
Wardrobe	hanging/drawers/shelves
Bathroom	shared
Toilet	yes
Wash basin	yes
Shower	yes
Washing machine	Candy
Extra info	Interior light control: Lumitec POCO4, Mirage and GAI2 (2024)

MACHINERY

No of engines	1
Make	Volvo Penta
Type	TMD22
HP	78
kW	57.41
Fuel	diesel
Year installed	1999
Year of overhaul	2024 - engine hours after overhaul: 700. Total 7700h
Bowthruster	Retractable
Generator	Onan MDKAL 6 kw (refurbished 2024)
Running hours generator	140
Batteries	24V 560 AH Lithium ION (16 x 3.6A LifePO4 Prismatic)
Start battery	1 X 130AH LedAcid AGM battery
Service battery	16 x 3.6A 230Ah LifePO4 Prismatic
Navigation Battery	yes
Battery monitor	Daly 100BMS 500Ah, Victron Cerbo GX (2024)
Battery charger	Soler charger and Wind chargers, Victron Smartsolar (2024)



AMEL SUPER MARAMU 2000

Inverter	Victron Orion-TR 24-12 30Ah (2024)
Battery charger/inverter	24V-220V and 12V-110V Victron Quattro and Multiplus (2024)
Wind generator	400W Silentwind (2024)
Solar panel	1350W Bi-facial Sunoco (2024)
Shorepower	with cable
Watermaker	Dessalator D60 - refurbished 2024
Extra info	Victron battery Isolator (2024)
Extra info	Alternator engine Balmar 21-VUP-MC-100-SV (2024)
Extra info	Battery management Shunt, Lynx, MPPT monitor (2024)

NAVIGATION

Compass	yes
Multi control display	Aixom +7 + Triton 2 dd
Depth sounder	B&G DST810
Forw. looking depth sounder	Simrad ForwardScan (2024)
Windset	B&G WS320
VHF	B&G V60 and Standard Horizon HX210 (2024)
Autopilot	Simrad NAC3 Processor + (Backup Raymarine EV400)
Radar	B&G Halo20+ (2024)
GPS	B&G ZG100
Plotter	B&G Vulcan 12R and Zeus 7S
Wifi antenna	Peplink model and antenna
AIS receiver	Si-TEX EMtrak MDA-5 (2024)
Personal MOB transmitter	ACR OLAS Exposure, 4 pax kit, float on light
Camera	TP Link Tapo C520WS
Navigation lights	Hello Tricolor / anchor (2024)
Extra info	Starlink, SSB Furuno AT-150 and SSB Shakespeare (2024)
Extra info	Autop. drive: Raymarine Type 1 Rotary Drive + Raymarine Type 2

EQUIPMENT



AMEL SUPER MARAMU 2000

Anchor	Lewmar (2024)
Anchor chain	110m - 14mm (2024)
Dinghy	Sail Marine 3.1 GRP + Mercury 15HP 2 stroke (2024)
Life raft	Viking 8 pax RescYou Ocean
Lifejackets	HH and Mustang
Safety lines on deck	Jackline
TV	Samsung frame TV 65LS03D - 4K
Speakers in salon	B&O AM1 (2024)
Fire extinguisher	2+4+6 kg
Extra info	Entertainment system Pioneer
Extra info	Air compressor Bauer/Junior 2, 3 tank Divemaster (2024)
Extra info	3D printer Bambu lab X1-Carbon to produce minor spare parts.

RIGGING

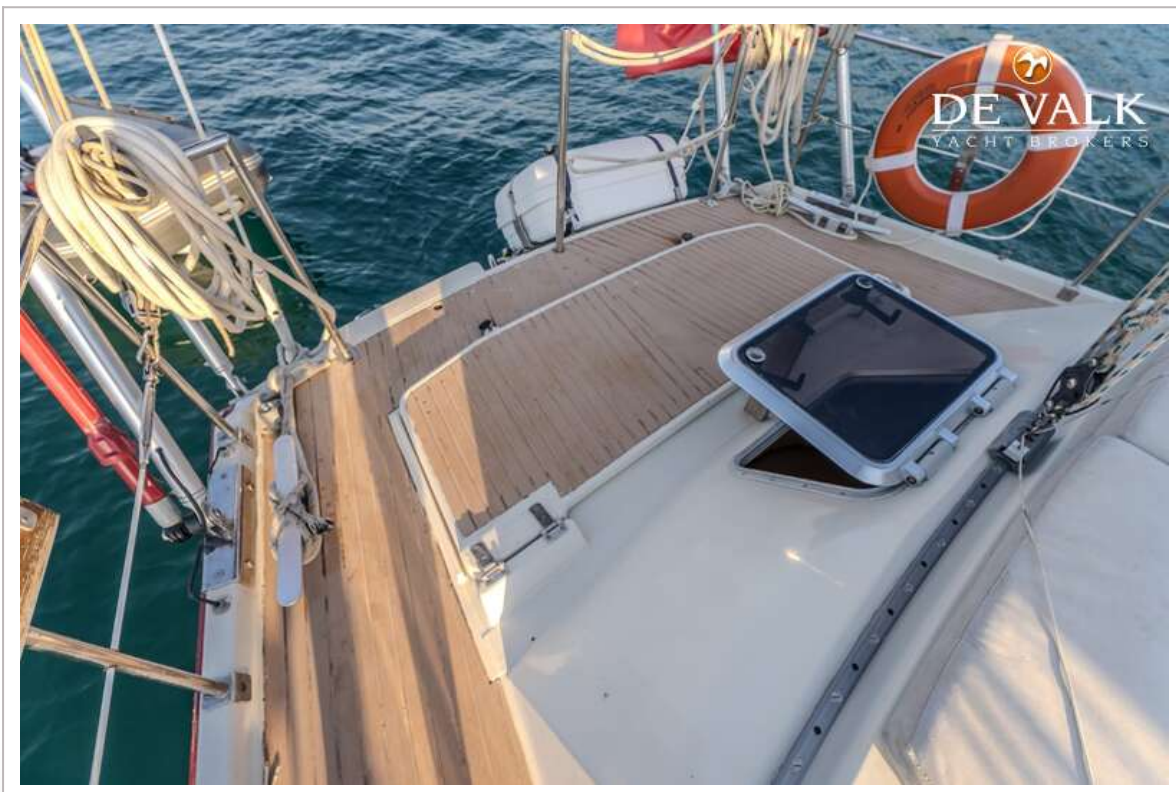
Rigging	ketch New wire rigging 2020
Standing rigging	wire Complete new rigging 2020
Material mast	aluminium
Spreaders	2 main 1 mizzen
Keel stepped mast	yes
Mainsail	Moby sails (2024) electric furling
Battcars	yes
Mizzen	Moby sails (2024) manual furling
Genoa	Moby sails (2024) electric furling
Spinnaker	Moby sails (2024)
Reefing System	main in-mast furling
Secondary sheet winch	2 X electric
Halyard winches	yes
Reefing winch	2 electric



AMEL SUPER MARAMU 2000



AMEL SUPER MARAMU 2000



AMEL SUPER MARAMU 2000



AMEL SUPER MARAMU 2000



AMEL SUPER MARAMU 2000



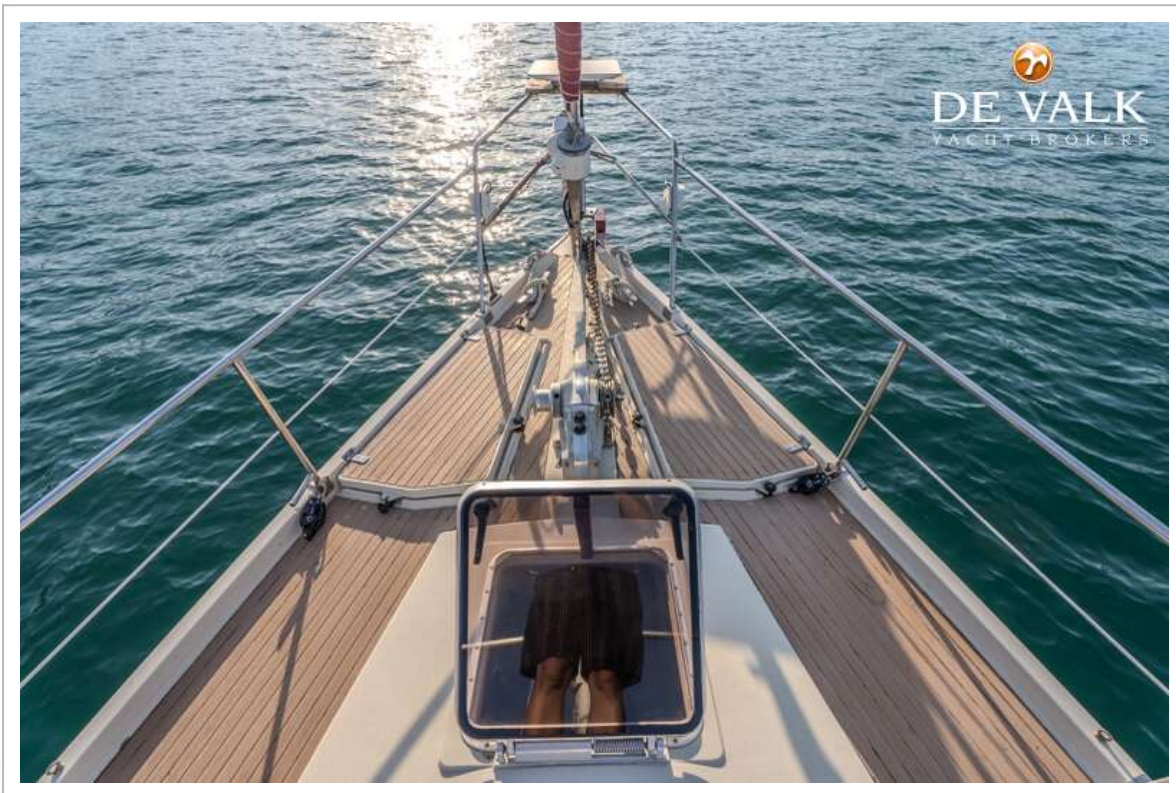
AMEL SUPER MARAMU 2000



AMEL SUPER MARAMU 2000



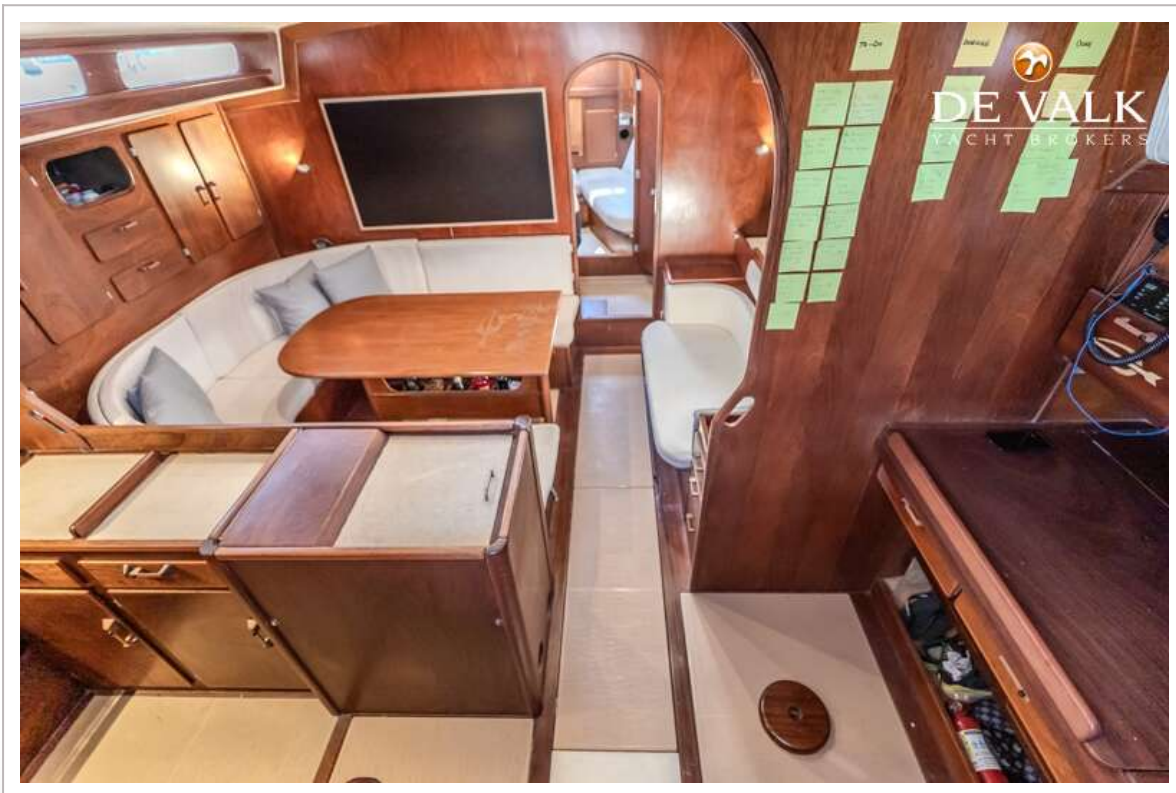
AMEL SUPER MARAMU 2000



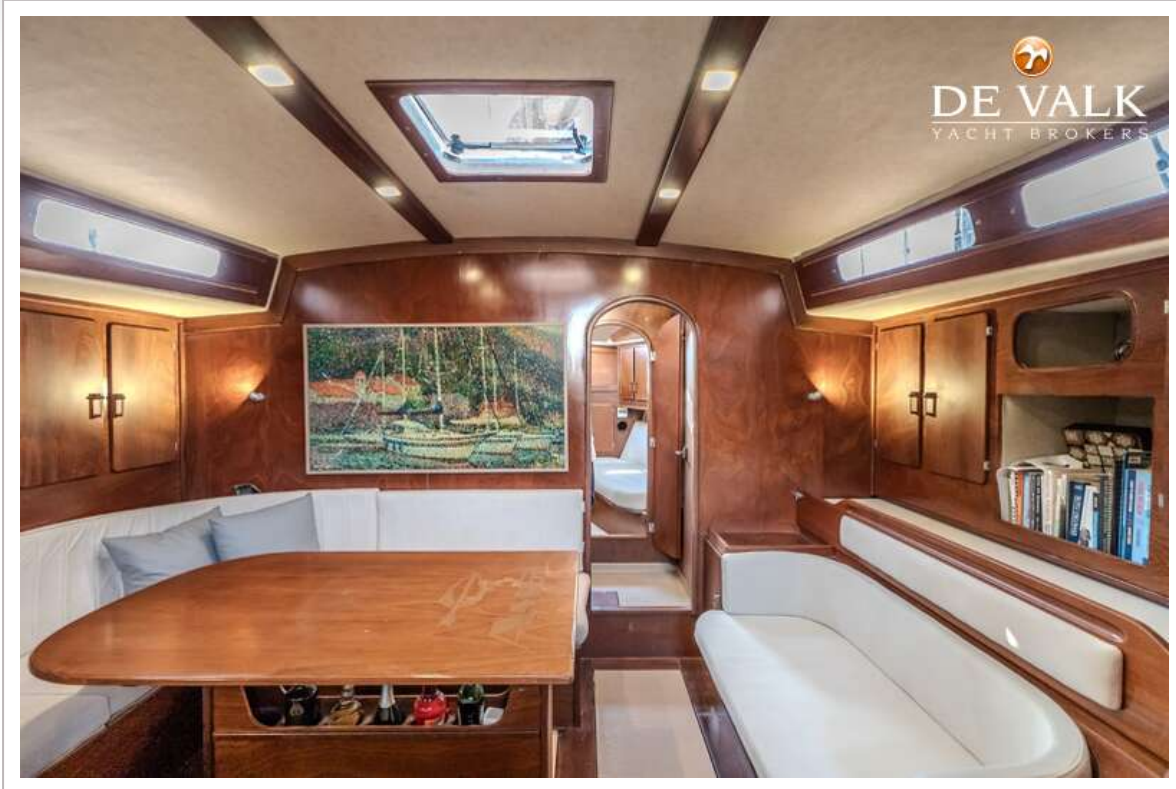
AMEL SUPER MARAMU 2000



AMEL SUPER MARAMU 2000



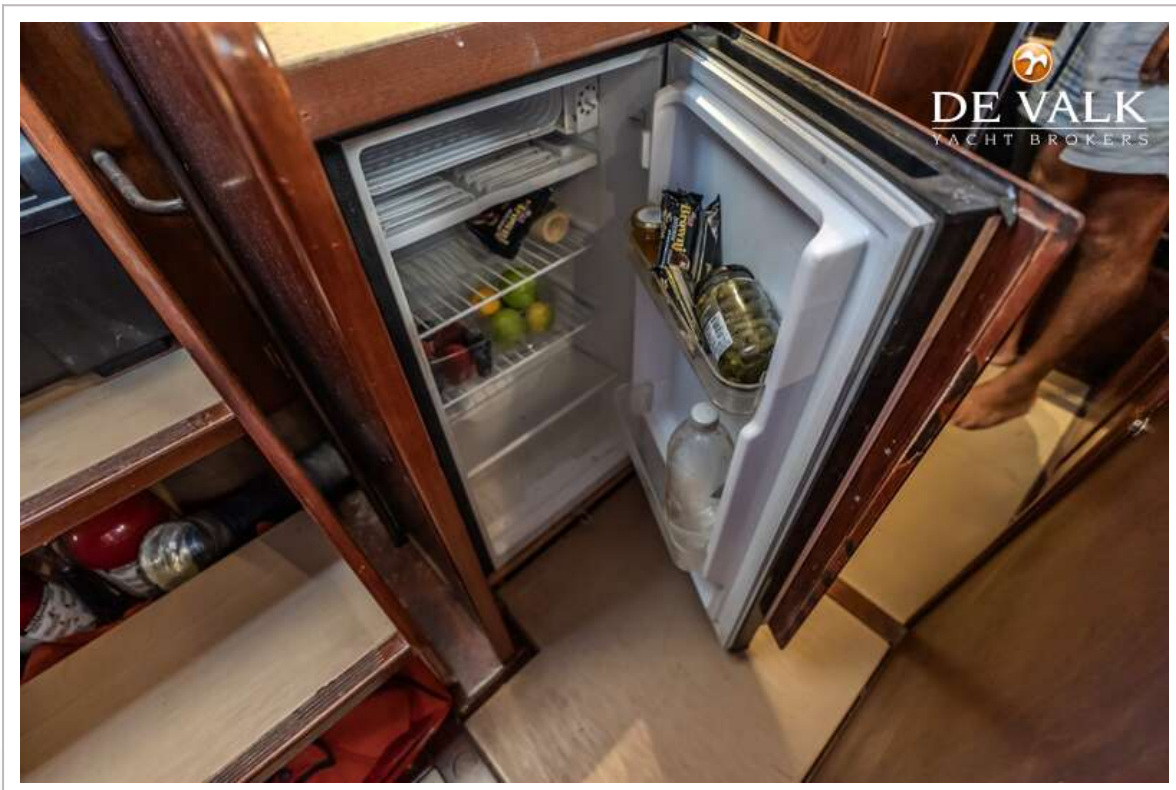
AMEL SUPER MARAMU 2000



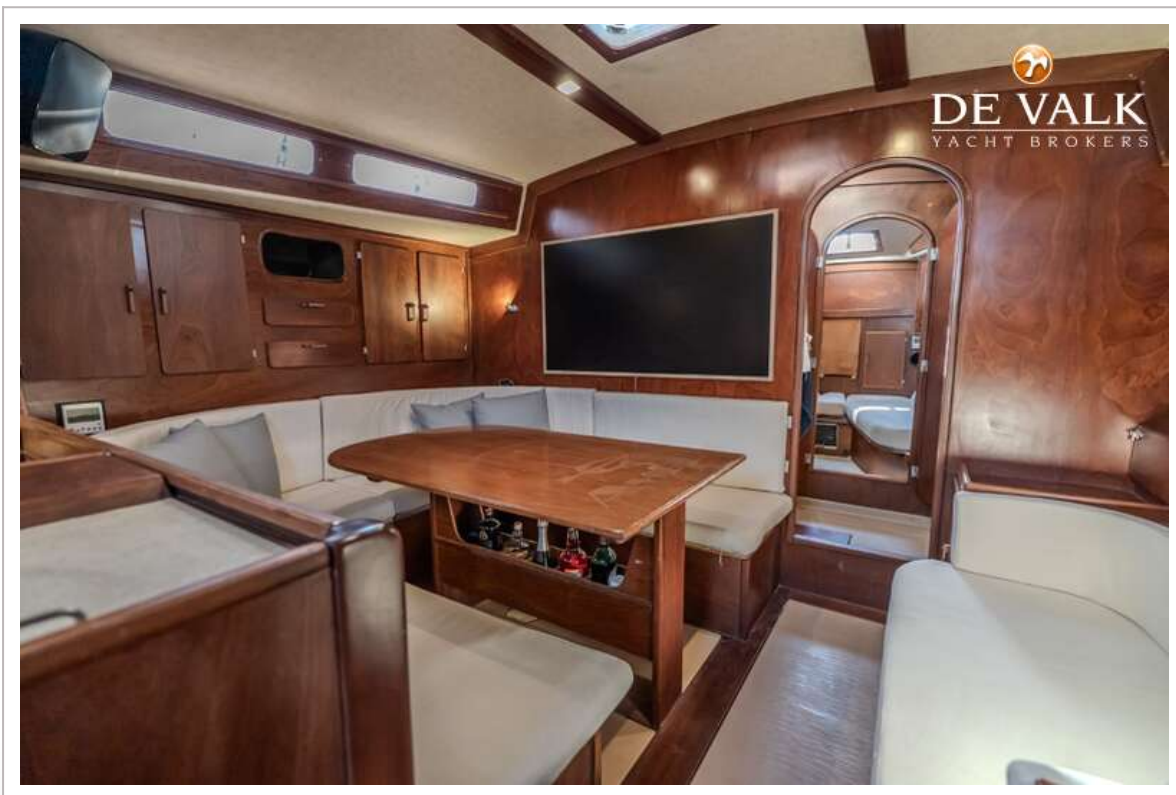
AMEL SUPER MARAMU 2000



AMEL SUPER MARAMU 2000



AMEL SUPER MARAMU 2000



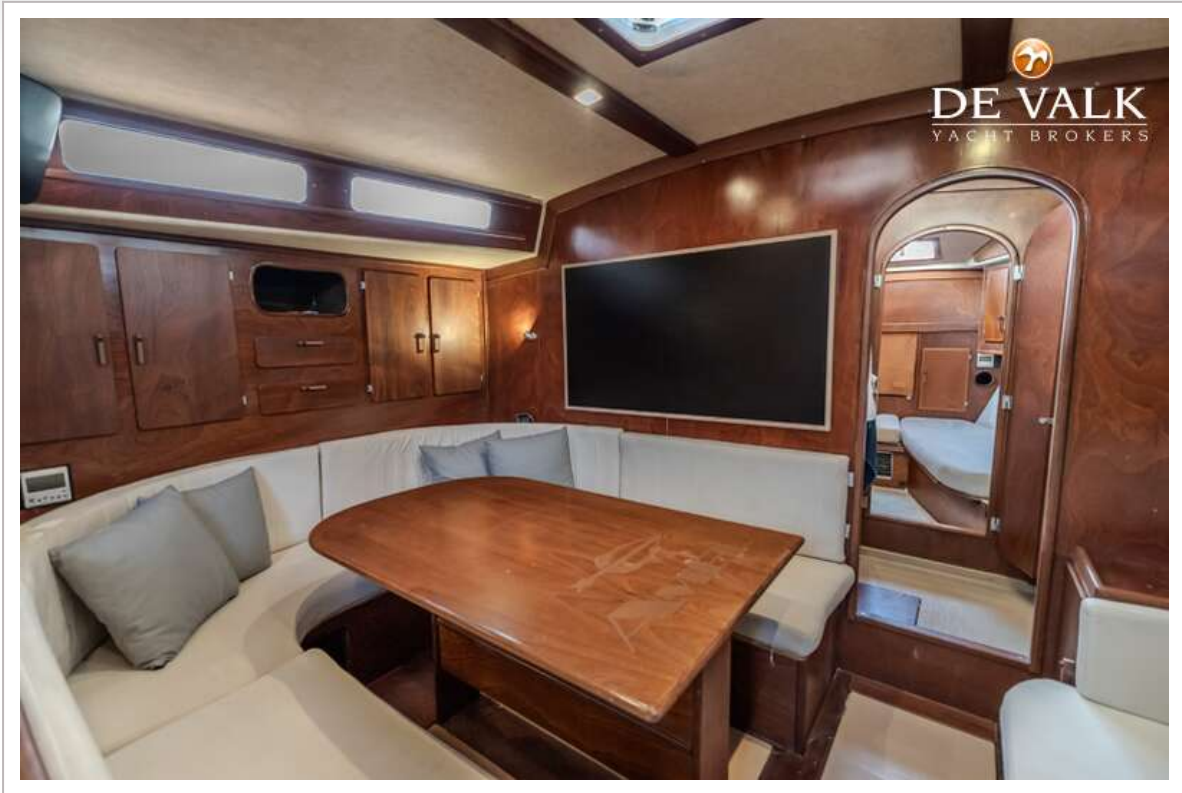
AMEL SUPER MARAMU 2000



AMEL SUPER MARAMU 2000



AMEL SUPER MARAMU 2000



AMEL SUPER MARAMU 2000



AMEL SUPER MARAMU 2000

