



DE VALK
YACHT BROKERS



NORTHMAN 1200



DE VALK
YACHT BROKERS

NORTHMAN 1200

BROKER'S COMMENTS

The Northman 1200 is a well-designed trawler offering excellent comfort, efficiency, and long-range cruising capability ideal for exploring the Adriatic and beyond. With spacious living areas, practical layout, and easy handling, she is perfectly suited for extended stays on board. Located in Marina Trogir, Croatia, and available for viewing at any time.

Filip Mimica

SPECIFICATIONS

Dimensions	11.65 x 3.45 x 0.70 (m)	Builder	Northman
Built	2021	Cabins	3
Material	GRP	Berths	8
Engine(s)	1 x YANMAR 4LV-250 diesel	Hp/Kw	250.00 (hp), 184.00 (kw)
Asking price	€ 270.000 (VAT UK VAT Paid)	Lying	Croatia

CONTACT

Sales office	De Valk Dalmatia	Telephone	0031 653 299 244
Address	Ul. Velimira Skorpika 22000 Sibenik HR	E-mail	dalmatia@devalk.nl

DISCLAIMER

These particulars are given in good faith as supplied but cannot be guaranteed.



NORTHMAN 1200

GENERAL

Model	NORTHMAN 1200
Type	motor yacht
LOA (m)	11,65
Beam (m)	3,45
Draft (m)	0,70
Year built	2021
Launched	2021
Builder	Northman
Displacement (t)	7,4
Hull material	GRP
Hull colour	White
Deck material	Teak
Cockpit deck finish	Teak
Antifouling (year)	2026
Radar arch	yes
Fuel tank (litre)	500L
Level indicator (fuel tank)	yes
Freshwater tank (litre)	240L
Level indicator (freshwater)	yes
Blackwater tank (litre)	210L
Level indicator (blackwater)	yes

ACCOMMODATION

Cabins	3
Berths	8
Saloon	yes
Heating	Webasto Air Top Evo diesel heating factory (Heads saloon,toilet)
Navigation center	yes
Dinette to convert into berth	yes
Convertible berth	In Saloon



NORTHMAN 1200

Galley	yes
Sink	yes
Cooker	Ceramic 2-burner diesel cooker
Oven	Wallas diesel
Fridge	55L model 55 Liter drawer fridge webasto CRUISE Elegance 130L
Hot water system	Sigmar marine boiler
Water pressure system	Jabsco automatic water pump
Hot water tap	yes
Owners cabin	yes
Wardrobe	yes
Bathroom	yes
Toilet system	Electrical
Shower	Separate from the toilet
Guest cabin 1	yes
Wardrobe	yes
Toilet	yes
Toilet system	Electrical
Shower	Separate from the toilet
Guest cabin 2	yes
Wardrobe	yes
Extra info	Blinds and curtains in saloon
Extra info	Phifer shade curtains for rear

MACHINERY

No of engines	1
Make	YANMAR
Type	4LV-250
HP	250
kW	184
Fuel	diesel



NORTHMAN 1200

Year installed	2021
Drive	shaft
kW	186.4
Bowthruster	Vetus
Sternthruster	Vetus
Manual bilge pump	yes
Electric bilge pump	yes
Generator	yes
Batteries	Victron 12V 170Ah AGM super cycle battery
Start battery	Excel 70 amp
Service battery	Batteries 170Ah x 3, Victron super deep cycle agm
Bowthruster battery	Excel 140 amp
Sternthruster battery	Excel 140 amp
Battery monitor	yes
Battery charger	Victron Charge controller
Inverter	Victron Va 1200 1200-watt inverter
Solar panel	2 x 200W solar panels
Shorepower	yes
Extra info	Extra engine service kit
Extra info	Engine room sound proofing factory (extra)

NAVIGATION

Compass	yes
Depth sounder	Raymarine
VHF	Ray 53
Autopilot	Raymarine p70
Radar	Raymarine quantum doppler
Plotter	Raymarine Axiom 12" Plotter
Navigation lights	yes

EQUIPMENT



NORTHMAN 1200

Fixed hardtop	yes
Cockpit cover	Closing cockpit door
Sun awning	yes
Cockpit cushions	yes
Cockpit table	yes
Bathing platform	yes
Boarding ladder	yes
Deck shower	yes
Anchor	22 kg Delta anchor
Anchor chain	75 meter chain
Anchor 2	16 kg spare anchor
Windlass	Lewmar cpx vertical
Wiper	yes
Horn	yes
Fenders	yes
TV	23" Phillips
Radio	yes
Cockpit speakers	yes
Speakers in salon	yes
Fire extinguisher	Fire Package
Extra info	Fender on stern platform
Extra info	Top Tent
Extra info	Sunbeds for roof Front sitting cushions



NORTHMAN 1200



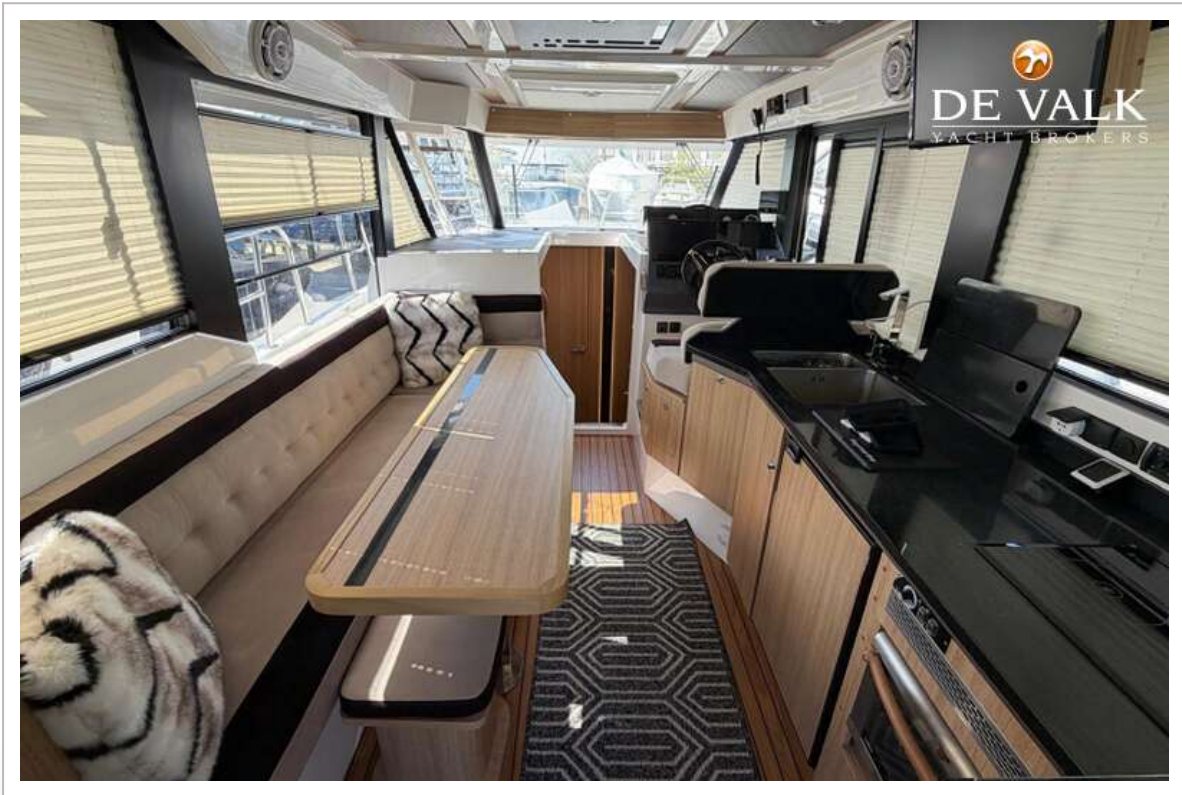
NORTHMAN 1200



NORTHMAN 1200



NORTHMAN 1200



NORTHMAN 1200



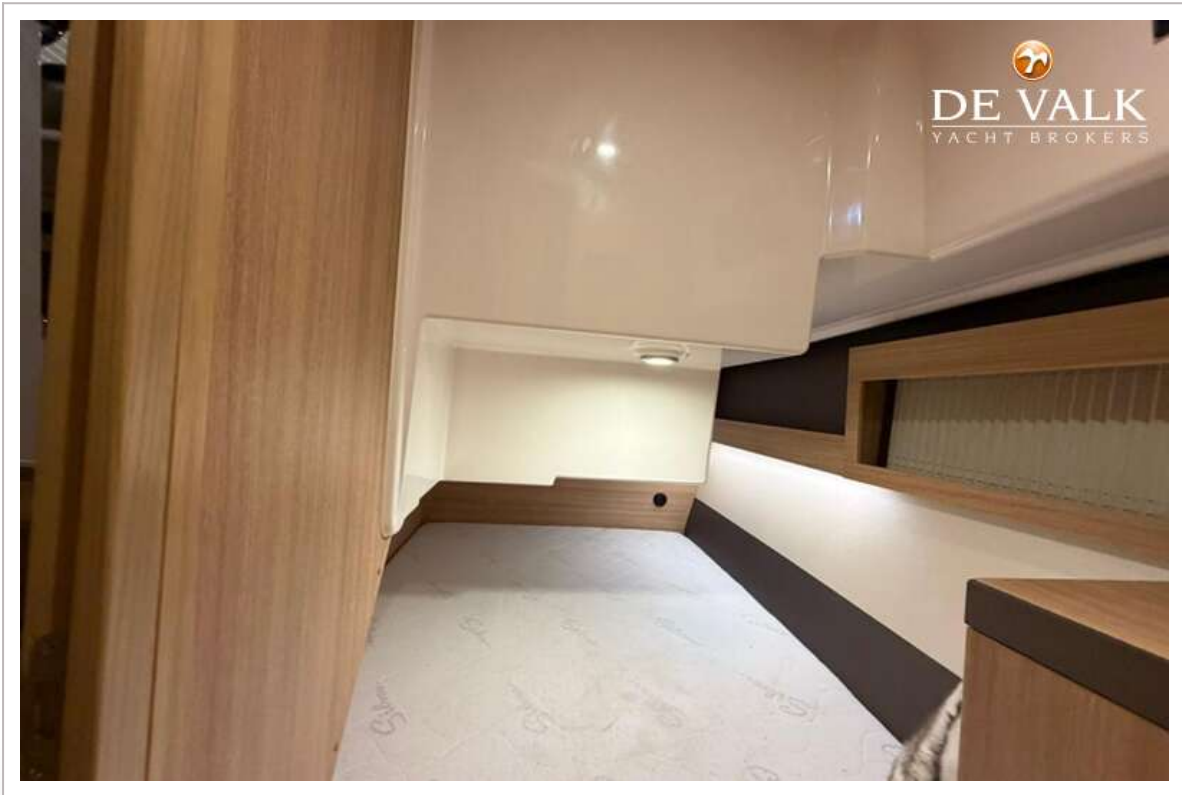
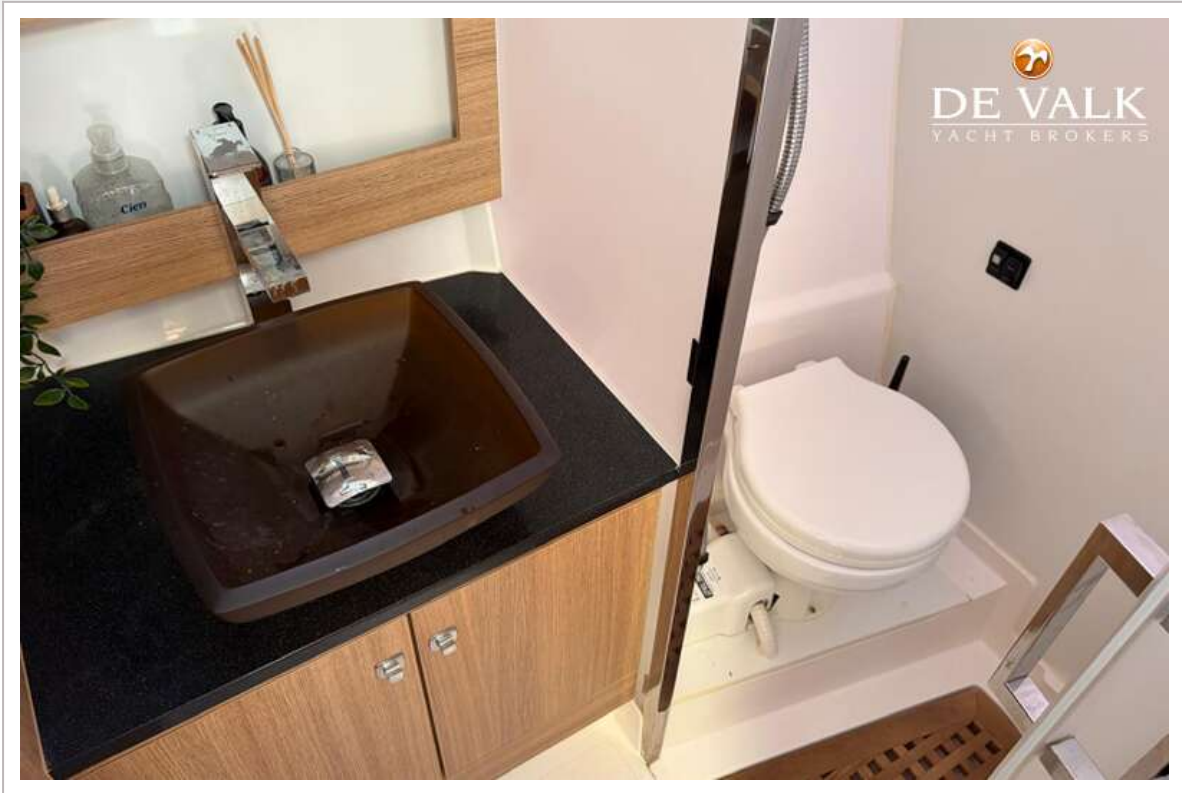
NORTHMAN 1200



NORTHMAN 1200



NORTHMAN 1200



NORTHMAN 1200

