



DE VALK
YACHT BROKERS



EUROSHIP LUXE MOTOR 1500



DE VALK
YACHT BROKERS

EUROSHIP LUXE MOTOR 1500

BROKER'S COMMENTS

Euroship Luxe Motor 1500 with hull built by Euroship in 2007. This Euroship Luxe Motor 1500 was completed by the first owner at another shipyard. The engine was installed in 2013 and the yacht was commissioned the same year. The vessel has been well maintained and is equipped with spud poles, modern electronics, generator, central heating and double glazing. Thanks to her spacious layout, this comfortable motor yacht is very suitable for extended onboard living and cruising through Europe.

Joris van de Rijt

SPECIFICATIONS

Dimensions	14.95 x 3.95 x 0.95 (m)	Builder	Euroship Services B.V. (Casco)
Built	2007	Cabins	2
Material	Steel	Berths	6
Engine(s)	1 x Iveco F4GE0606A diesel	Hp/Kw	150.00 (hp), 110.40 (kw)
Asking price	€ 375.000 (VAT Paid)	Lying	elsewhere / Not at sales office

CONTACT

Sales office	De Valk Sint Annaland B.V.	Telephone	+31 166 601 000
Address	Koelhuisweg 4 4697 RM Sint Annaland NL	E-mail	sintannaland@devalk.nl

DISCLAIMER

These particulars are given in good faith as supplied but cannot be guaranteed.



EUROSHIP LUXE MOTOR 1500

GENERAL

Model	EUROSHIP LUXE MOTOR 1500
Type	motor yacht
LOA (m)	14,95
Beam (m)	3,95
Draft (m)	0,95
Air draft (m)	2,95
Headroom (m)	2,04
Year built	2007
Launched	Built starts in 2007. Launched in 2013
Builder	Euroship Services B.V. (Casco)
Country	The Netherlands
Displacement (t)	25
CE norm	C
Hull material	steel
Hull colour	black
Hull shape	hard chine
Superstructure material	steel
Rubbing strake	steel
Deck material	steel
Deck finish	non-skid paint
Superstructure deck finish	non-skid paint
Cockpit deck finish	teak
Antifouling (year)	2023
Window frame	aluminium
Window material	double glazing
Deckhatch	2 x
Fuel tank (litre)	steel 2 x 400
Level indicator (fuel tank)	yes
Freshwater tank (litre)	1200
Level indicator (freshwater)	yes



Blackwater tank (litre)	800
Level indicator (blackwater)	yes
Blackwater tank extraction	yes
Wheel steering	hydraulic
Inside helm position	yes

ACCOMMODATION

Cabins	2
Berths	6
Interior	teak
Floor	teak and holly
Deck saloon	yes
Saloon	yes
Headroom saloon (m)	2,04 (upper saloon)
Heating	central heating Kabola HR 400
Aft Cabin	yes
Dinette	yes
Sliding door to cockpit	yes
Galley	yes
Countertop	plastic
Sink	stainless steel
Cooker	ceramic Zanussi 4 burner
Oven	Siemens
Extractor	yes
Fridge	2 x with freezer compartment
Hot water system	220V or central heating
Water pressure system	electrical
Owners cabin	double bed
Bed length (m)	2,00 x 1,65
Wardrobe	hanging/drawers/shelves
Bathroom	en suite



EUROSHIP LUXE MOTOR 1500

Toilet	en suite (seperate from shower)
Toilet system	electric
Wash basin	in the bathroom
Shower	en suite (seperate from toilet)
Guest cabin 1	twin single
Bed length (m)	2,00 x 0,65
Wardrobe	shelves
Washing machine	Whirlpool

MACHINERY

No of engines	1
Make	Iveco
Type	F4GE0606A
HP	150
kW	110.40
Fuel	diesel
Year installed	2013
Engine hours	1456
Engine cooling system	closed keelcooling
Drive	shaft
Engine controls	bowden cable
Gearbox	hydraulic PRM
Bowthruster	electric Proportional
Sternthruster	electric Proportional
Thrust bearing	Aquadrive
Propeller type	fixed
Propeller blades	4
Propeller shaft material	stainless steel
Electric bilge pump	5 x
Electrical installation	12/24/230V
Generator	Mastervolt 10 Ultra



EUROSHIP LUXE MOTOR 1500

Running hours generator	517 (22-05-2026)
Start battery	2 x (for start + spud pole aft)
Service battery	Lithium po4 560 Ah (2025)
Generator battery	1 x
Bowthruster battery	2 x (for bowthruster + spud pole forward)
Battery monitor	Via app on phone
Battery charger/inverter	Victron Multiplus 11/3000/120/52 (2025)
Solar panel	6 x (2025)
Shorepower	with cable
Spud pole	2 x

NAVIGATION

Compass	Raymarine
Depth sounder	Raymarine
Log	Raymarine
VHF	Raymarine
Autopilot	Raymarine
Rudder angle indicator	Raymarine
Plotter	Raymarine
Navigation lights	yes

EQUIPMENT

Cockpit cover	yes
Cockpit cushions	yes
Boarding ladder	yes
Gangway	yes
Anchor	Pool
Anchor chain	yes
Windlass	manual
Deck wash	yes
Davits	steel



EUROSHIP LUXE MOTOR 1500

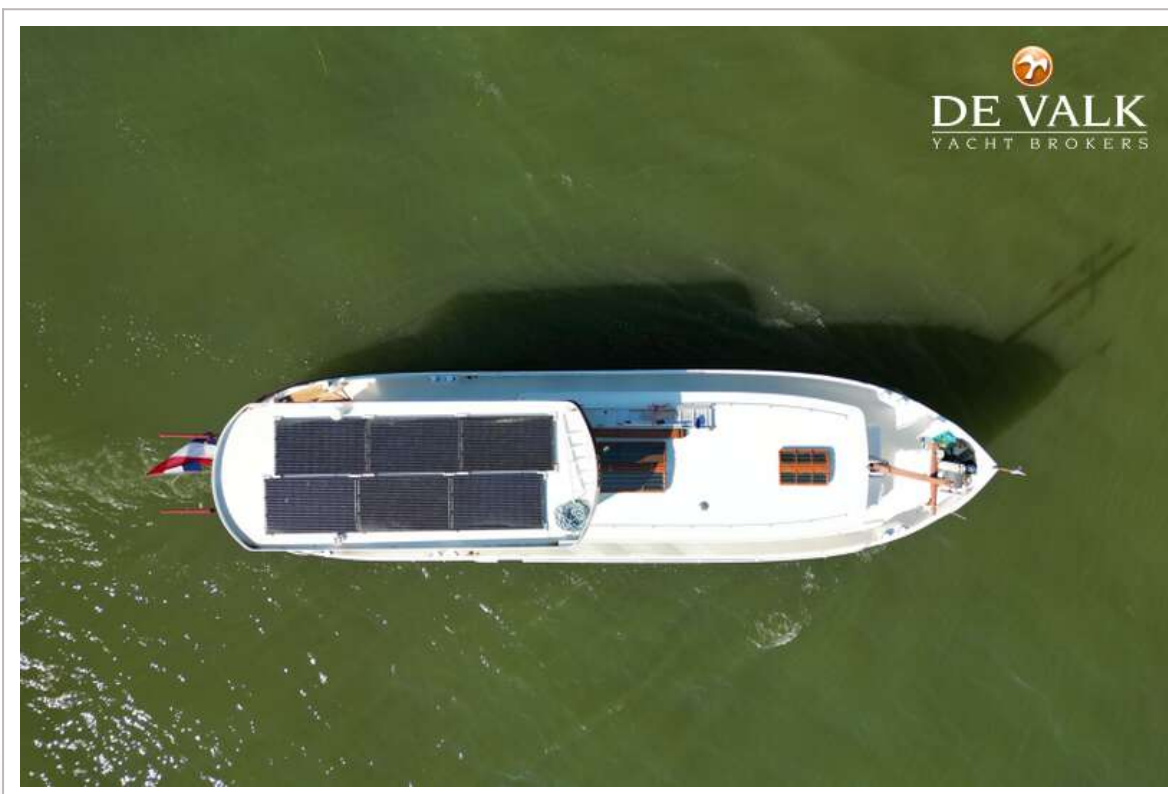
Davits controls	manual
Sea railing	steel
Grab rail (superstructure)	steel
Railing side opening gates	2 x
Fenders	yes
Mooring lines	yes
TV	With lift in saloon
Radio-cd player	yes
Speakers in salon	yes
Fire extinguisher	Surveyed and/or renewed in 2025



EUROSHIP LUXE MOTOR 1500



EUROSHIP LUXE MOTOR 1500



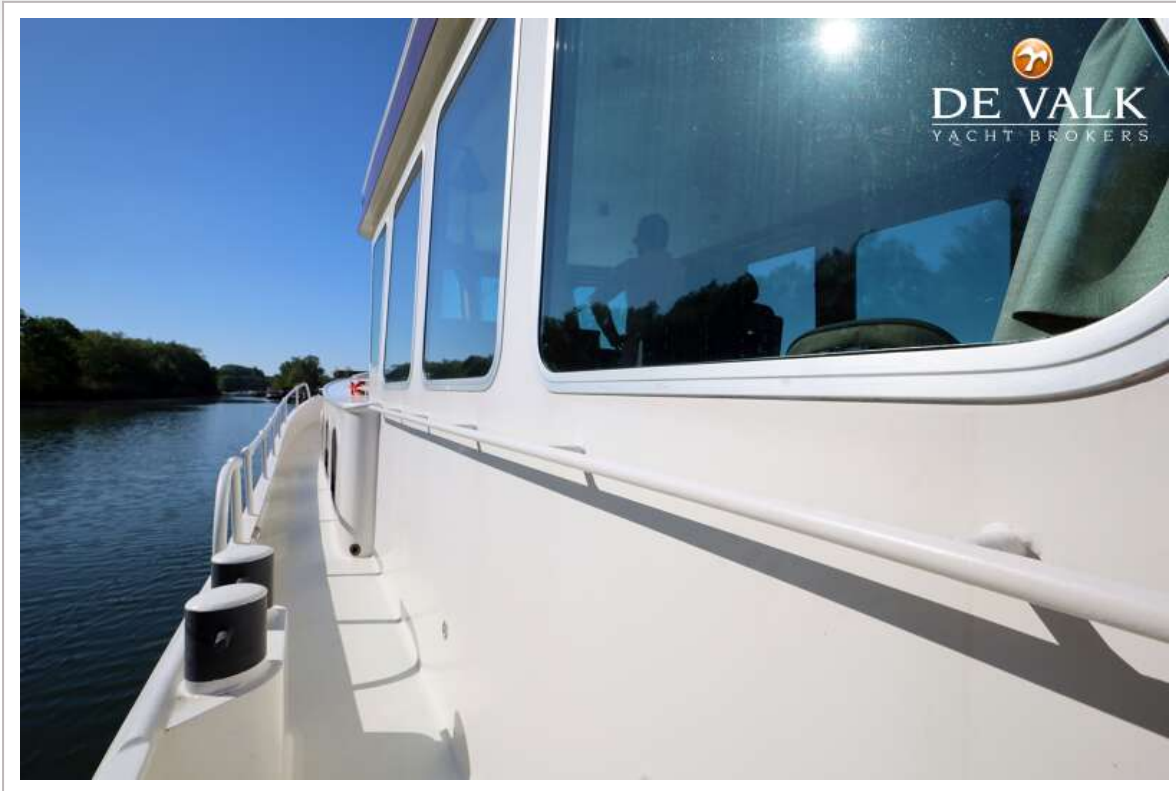
EUROSHIP LUXE MOTOR 1500



EUROSHIP LUXE MOTOR 1500



EUROSHIP LUXE MOTOR 1500



EUROSHIP LUXE MOTOR 1500



EUROSHIP LUXE MOTOR 1500



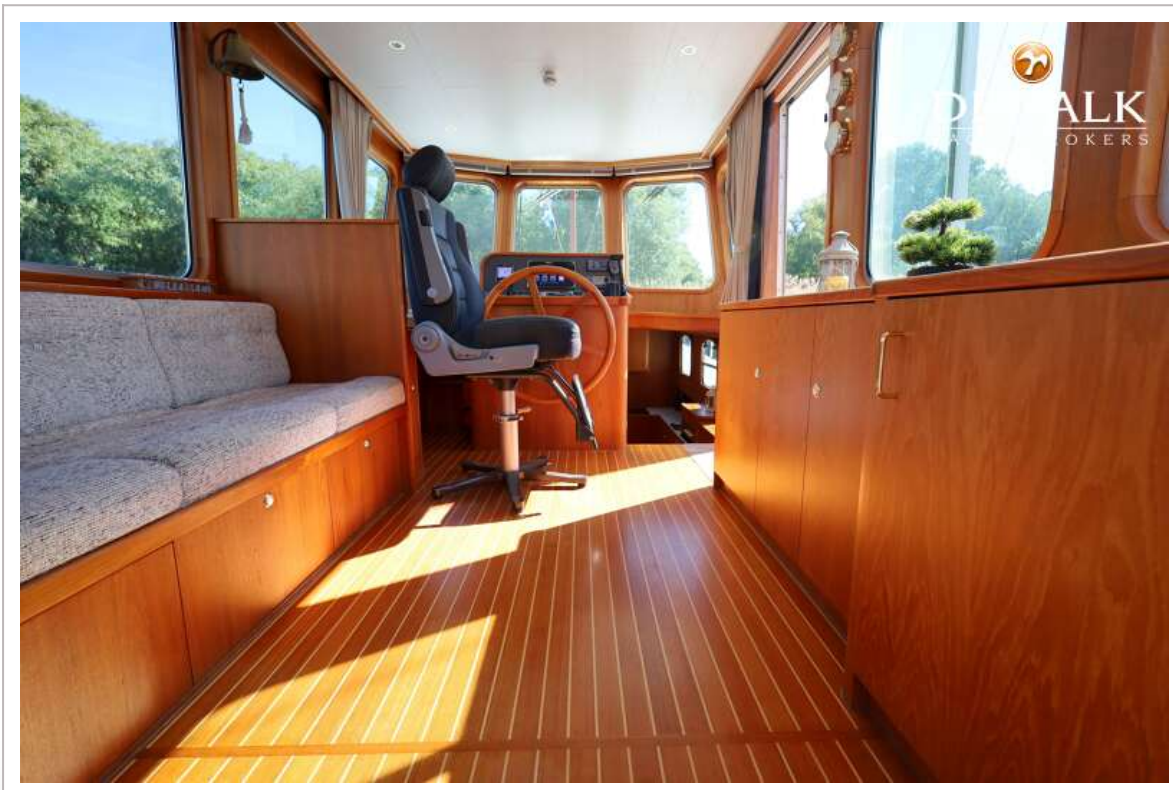
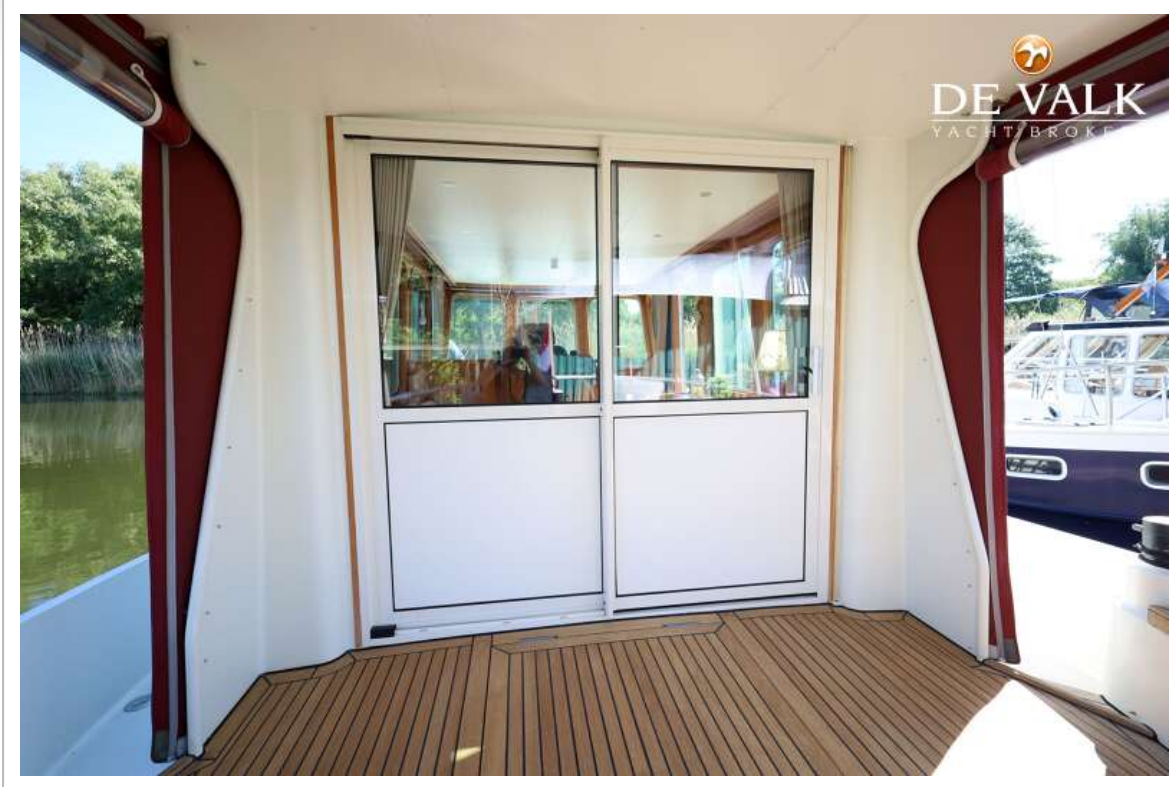
EUROSHIP LUXE MOTOR 1500



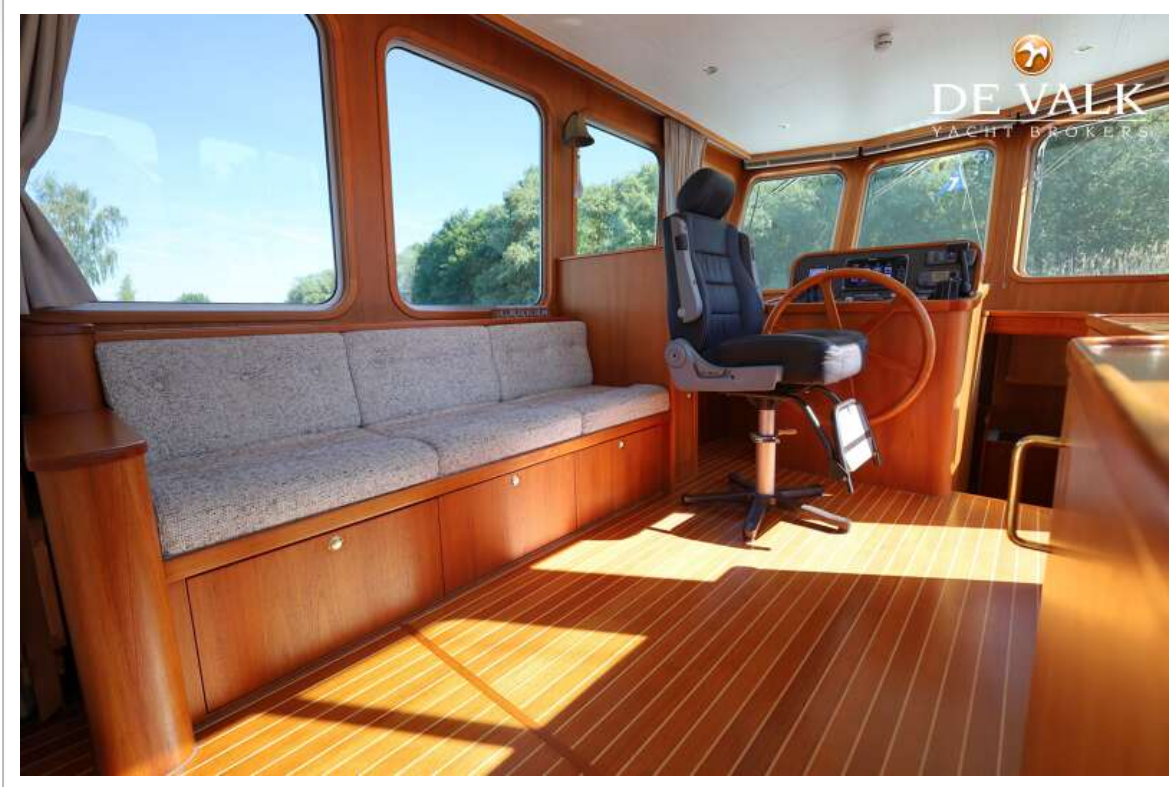
EUROSHIP LUXE MOTOR 1500



EUROSHIP LUXE MOTOR 1500



EUROSHIP LUXE MOTOR 1500



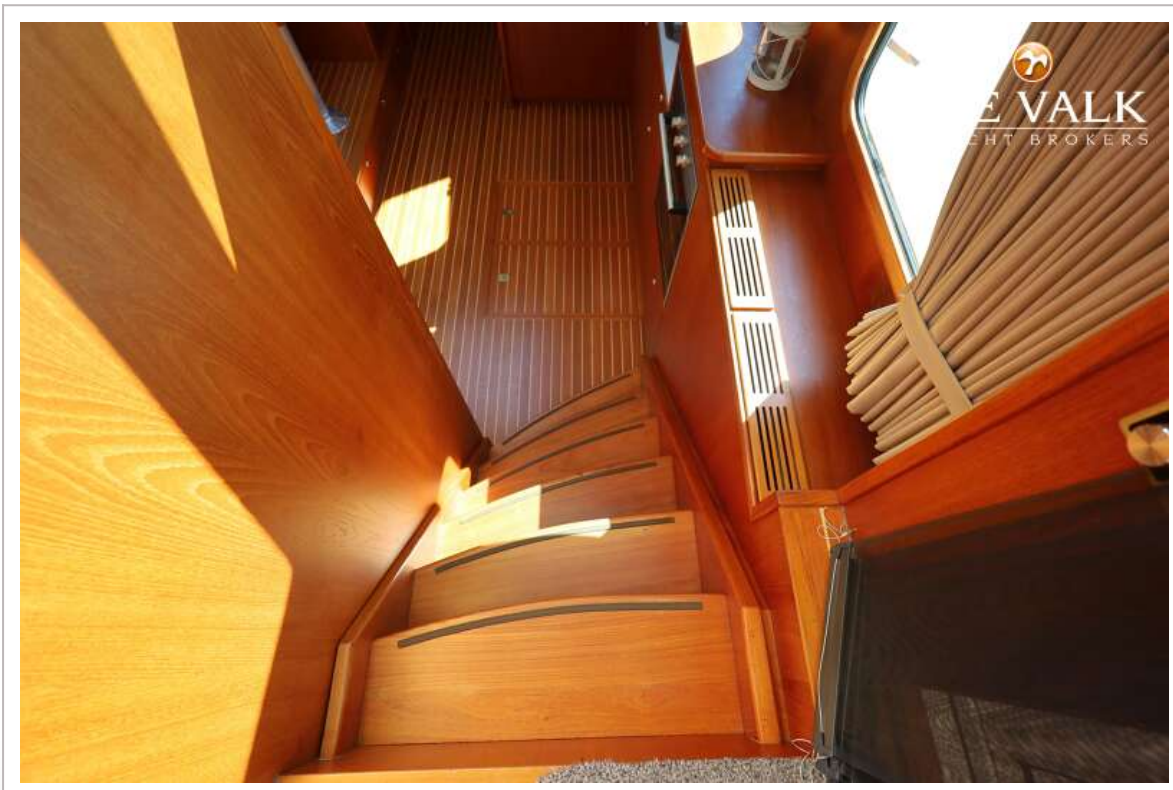
EUROSHIP LUXE MOTOR 1500



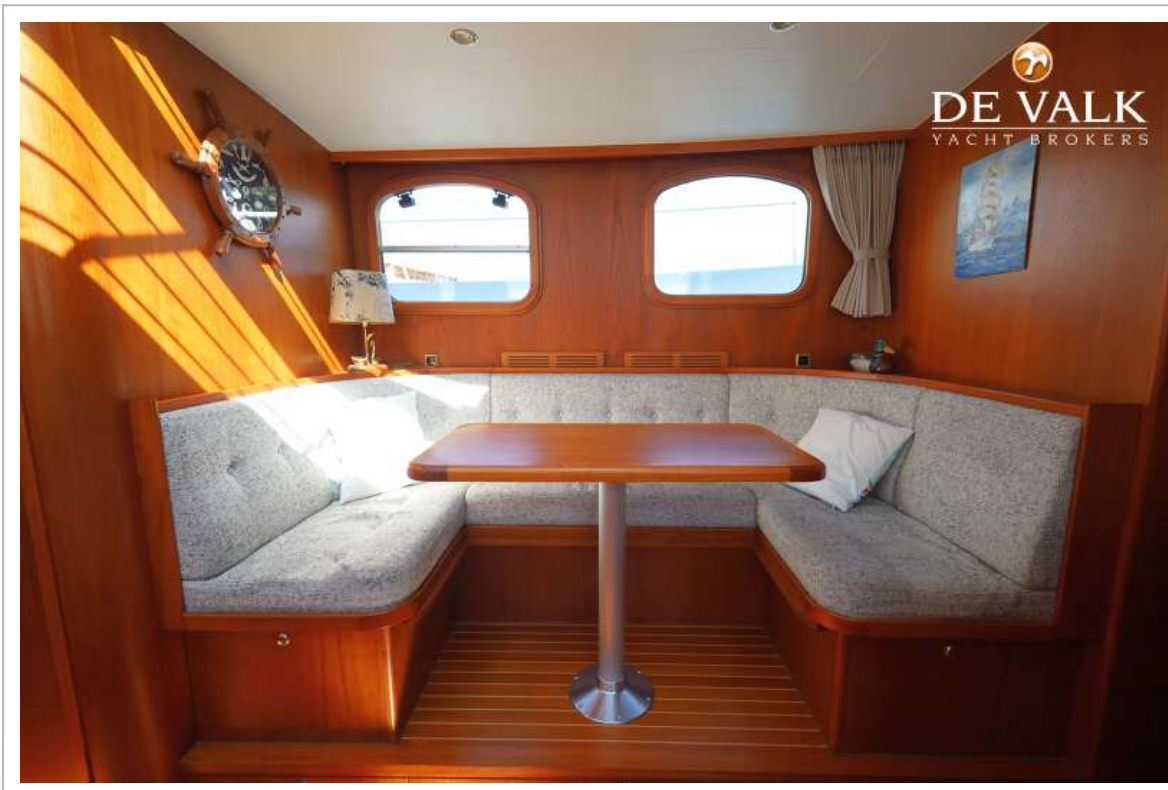
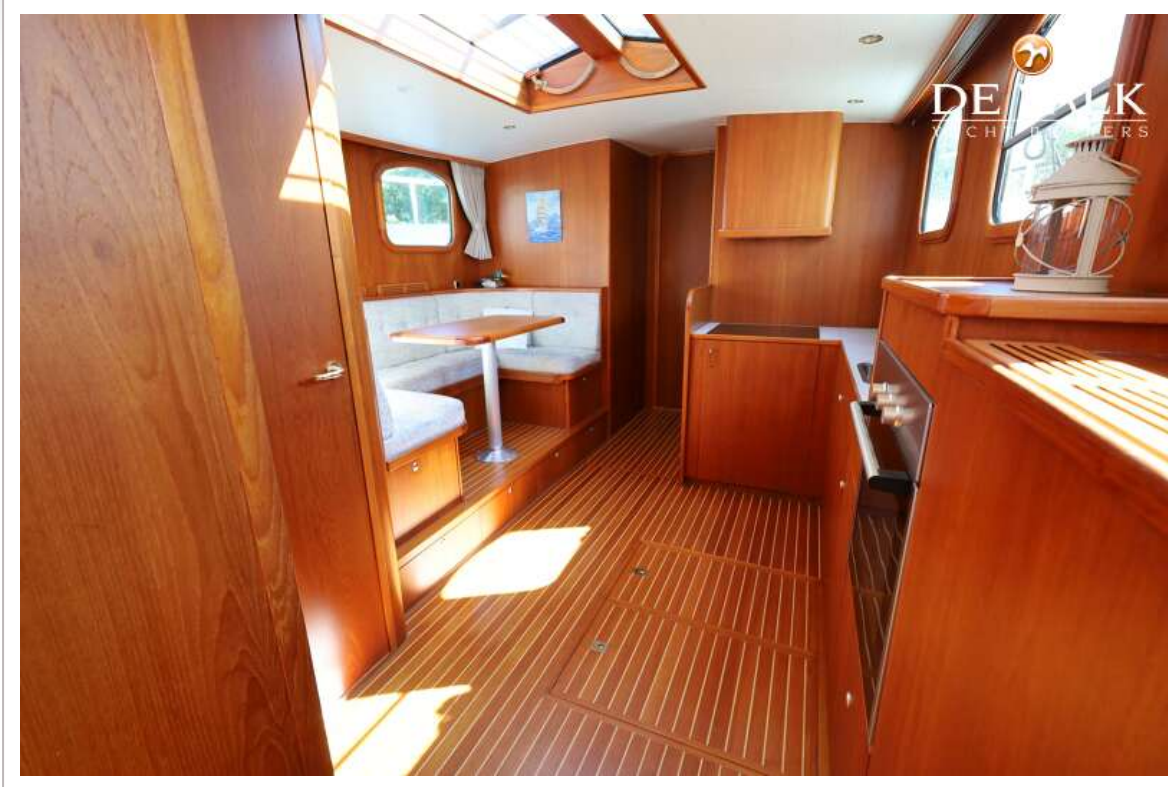
EUROSHIP LUXE MOTOR 1500



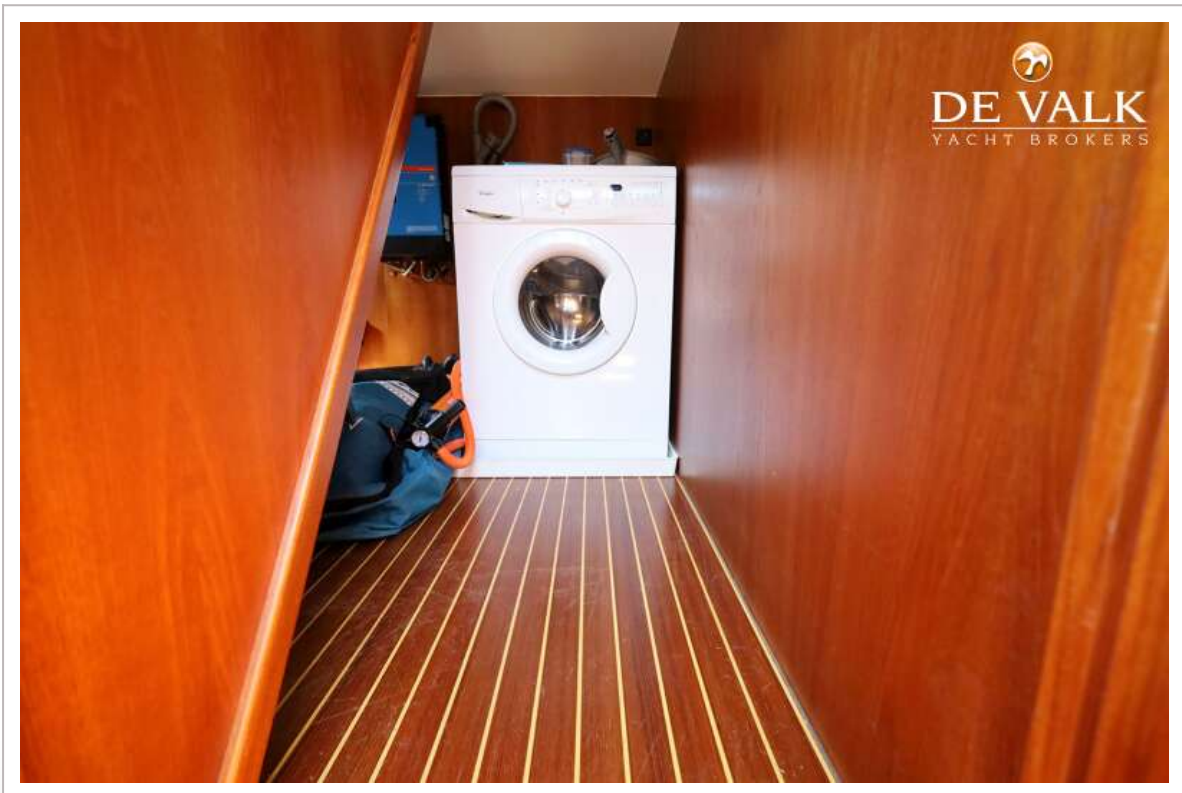
EUROSHIP LUXE MOTOR 1500



EUROSHIP LUXE MOTOR 1500



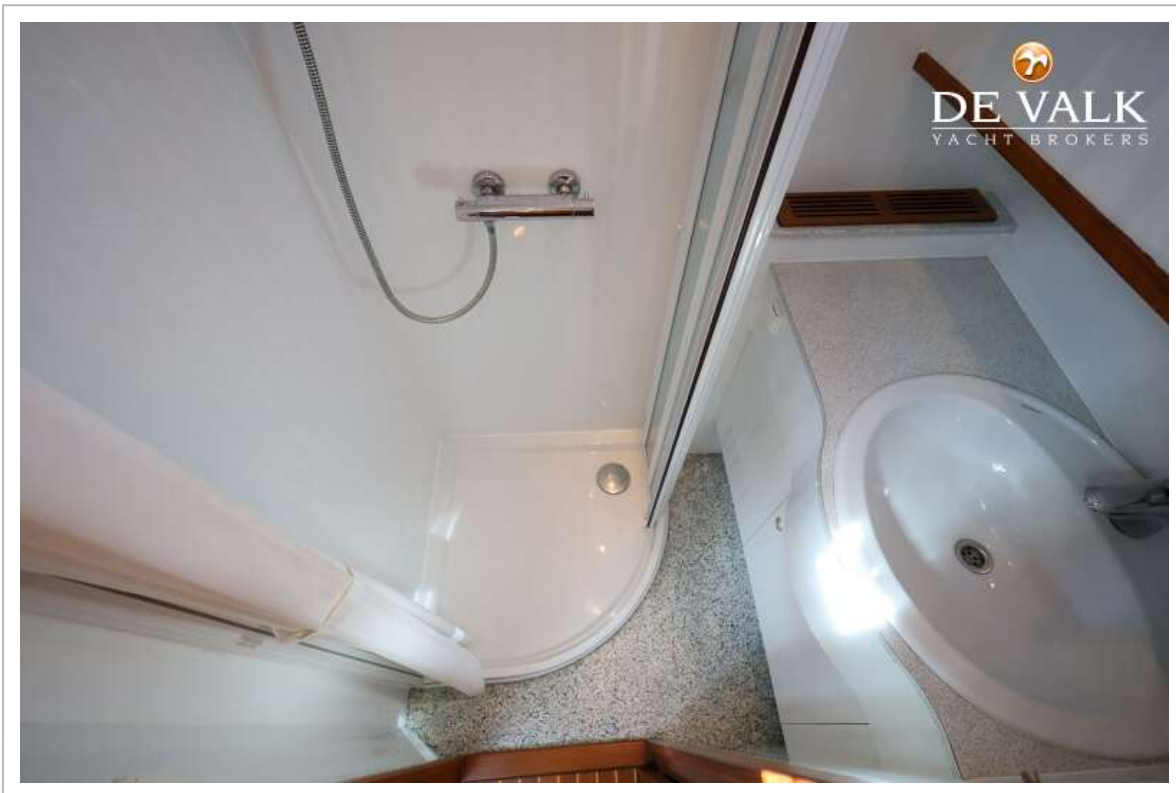
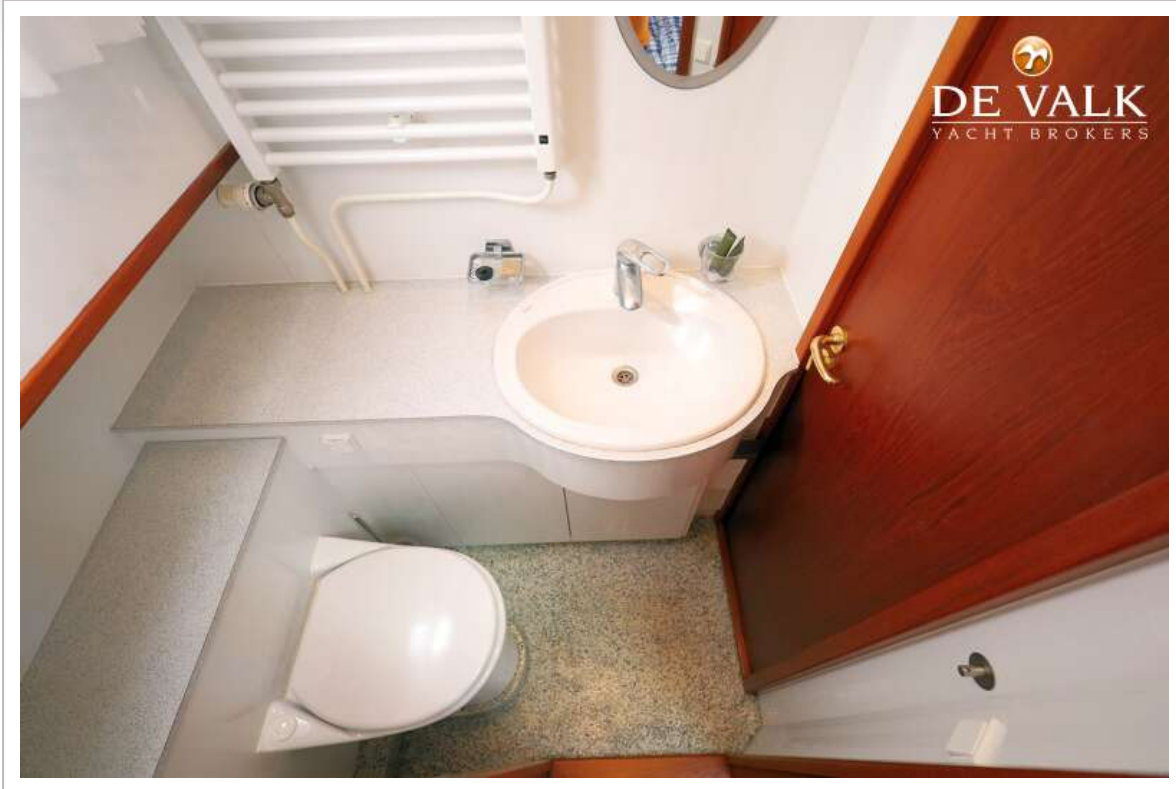
EUROSHIP LUXE MOTOR 1500



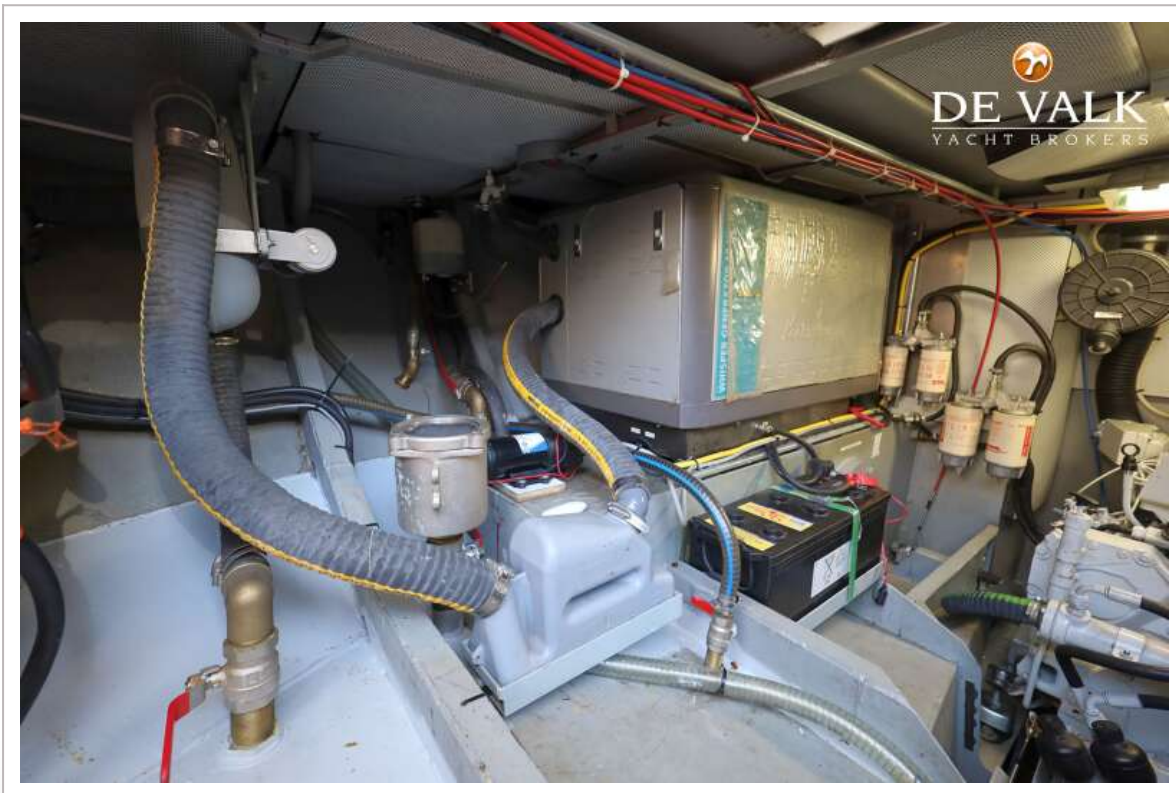
EUROSHIP LUXE MOTOR 1500



EUROSHIP LUXE MOTOR 1500



EUROSHIP LUXE MOTOR 1500



EUROSHIP LUXE MOTOR 1500

