



DE VALK
YACHT BROKERS



KOOPMANS 39



DE VALK
YACHT BROKERS

BROKER'S COMMENTS

This Koopmans 39 is a beautifully maintained classic cruiser, professionally refitted in 2005 with a new engine installed during the refit. In 2025, the yacht received a complete professional repaint, presenting in excellent cosmetic condition. Combining the renowned seaworthiness and elegant lines of the Koopmans design with significant upgrades, she offers reliable performance, timeless style, and exceptional value. A well cared for yacht, ready for comfortable cruising and extended offshore adventures.

Stein Dubbeldam

SPECIFICATIONS

Dimensions	11.89 x 3.60 x 1.85 (m)	Builder	
Built	1980	Cabins	2
Material	Steel	Berths	6
Engine(s)	1 x Yanmar 4JH3E	Hp/Kw	56.00 (hp), 41.22 (kw)
Asking price	€ 99.000 (VAT Exempt)	Lying	at sales office

CONTACT

Sales office	De Valk Hindeloopen B.V.	Telephone	+31 514 52 40 00
Address	Oosterstrand 1 8713 JS Hindeloopen NL	E-mail	hindeloopen@devalk.nl

DISCLAIMER

These particulars are given in good faith as supplied but cannot be guaranteed.



GENERAL

Model	KOOPMANS 39
Type	sailing yacht
LOA (m)	11,89
Beam (m)	3,60
Draft (m)	1,85
Headroom (m)	1,90
Year built	1980
Country	The Netherlands
Designer	Dick Koopmans
Hull material	steel
Hull colour	black
Hull shape	round-bilged
Keel type	Semi long keel
Superstructure material	wood
Rubbing strake	steel
Deck material	wood
Deck finish	teak 2005
Superstructure deck finish	teak
Cockpit deck finish	teak
Antifouling (year)	2025
Window frame	yes
Window material	tempered glass
Deckhatch	3x
Fuel tank (litre)	steel 350 ltr.
Freshwater tank (litre)	steel 350 ltr.
More info on hull	Fully refitted in 2005
More info on paintwork	Hull repainted in 2025
Extra info	Photos and documentation of the refit are available at our sales office during a viewing.



ACCOMMODATION

Cabins	2
Berths	6
Interior	teak
Layout	Fully refitted in 2005 An L-shaped galley, followed by a spacious salon, then a spacious owner's cabin at the bow, aft on the port side is a spacious cabin, and aft on the starboard side is a spacious head.
Floor	teak and holly
Saloon	yes
Headroom saloon (m)	1,90 mtr.
Heating	Webasto Airtop
Navigation center	yes
Chart table	yes
Aft Cabin	yes
Convertible berth	yes
Sliding door to cockpit	yes
Galley	yes
Countertop	wood
Sink	stainless steel Single
Cooker	calor gas Eno 3 burner
Oven	In Cooker
Fridge	Isotherm
Hot water system	220V + engine Quick Boiler
Water pressure system	electrical
Owners cabin	v-bed
Bed length (m)	1,95x1,80 mtr.
Wardrobe	shelves
Bathroom	shared
Toilet	shared
Toilet system	manual Jabsco
Wash basin	in the bathroom



Shower	shared
Guest cabin 1	double bed
Bed length (m)	2,00x1,78 mtr.
Wardrobe	hanging and shelves

MACHINERY

No of engines	1
Make	Yanmar
Type	4JH3E
HP	56
kW	41.22
Year installed	2005
Engine hours	758
Engine cooling system	freshwater heat exchanger
Drive	shaft
Engine controls	bowden cable
Gearbox	mechanical
Bowthruster	electric Vetus
Propeller type	feathering Maxprop
Propeller blades	3
Propeller shaft material	stainless steel
Shaft lubrication	water
Electric bilge pump	yes
Electrical installation	12 - 230 Volt
Start battery	12 V 80 Ah
Service battery	2x 12V 230 Ah
Battery charger	2010 Victron Phoenix 12/50
Shorepower	with cable

NAVIGATION

Compass	Plastimo
----------------	----------



Multi control display	2x Simrad IS15
VHF	I-COM IC-M601
Autopilot	Simrad AP20
GPS	Furuno Navigator GP-32
Plotter	B&G T12
Navtex	Furuno NX-300

EQUIPMENT

Boarding ladder	stainless steel
Deck shower	Hot and cold
Anchor	yes
Anchor chain	yes
Windlass	electrical
Pushpit	yes
Pulpit	yes

RIGGING

Rigging	sloop
Standing rigging	wire
Brand mast	Build by Royal Huisman Vollenhove
Material mast	aluminium coated
Spreaders	One pair
Mainsail	Zeilmakerij de Vries Maritiem
Mainsail cover	2005 Zeilmakerij de Vries Maritiem Lazybag
Fully battened mainsail	yes
Genoa	Sudwest Sails
Genoa cover	Sudwest Sails
Gennaker	Half-winder
Reefing System	slabreefing
Boomvang	tackle
Genoa sheetwinches	2x Lewmar 48 three speed



Multifunctional winches

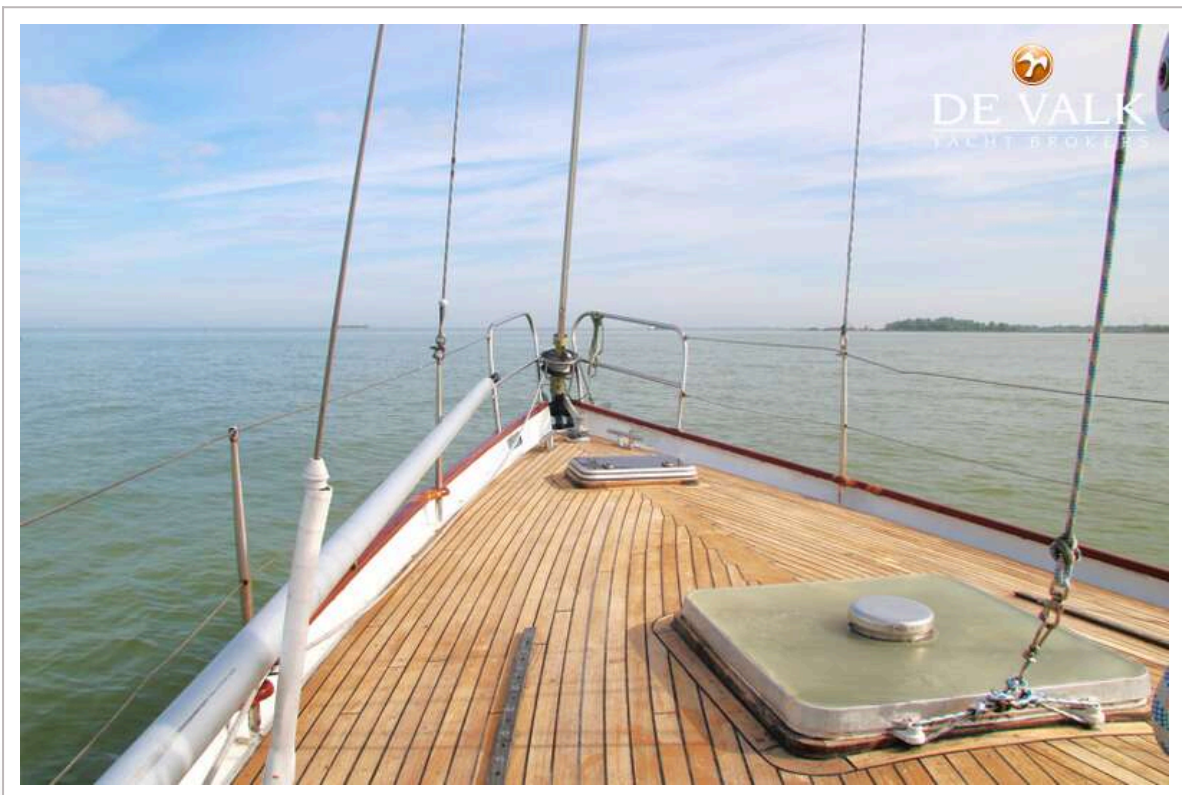
4x Lewmar 40 two speed | 1x Lewmar 30 two speed























KOOPMANS 39



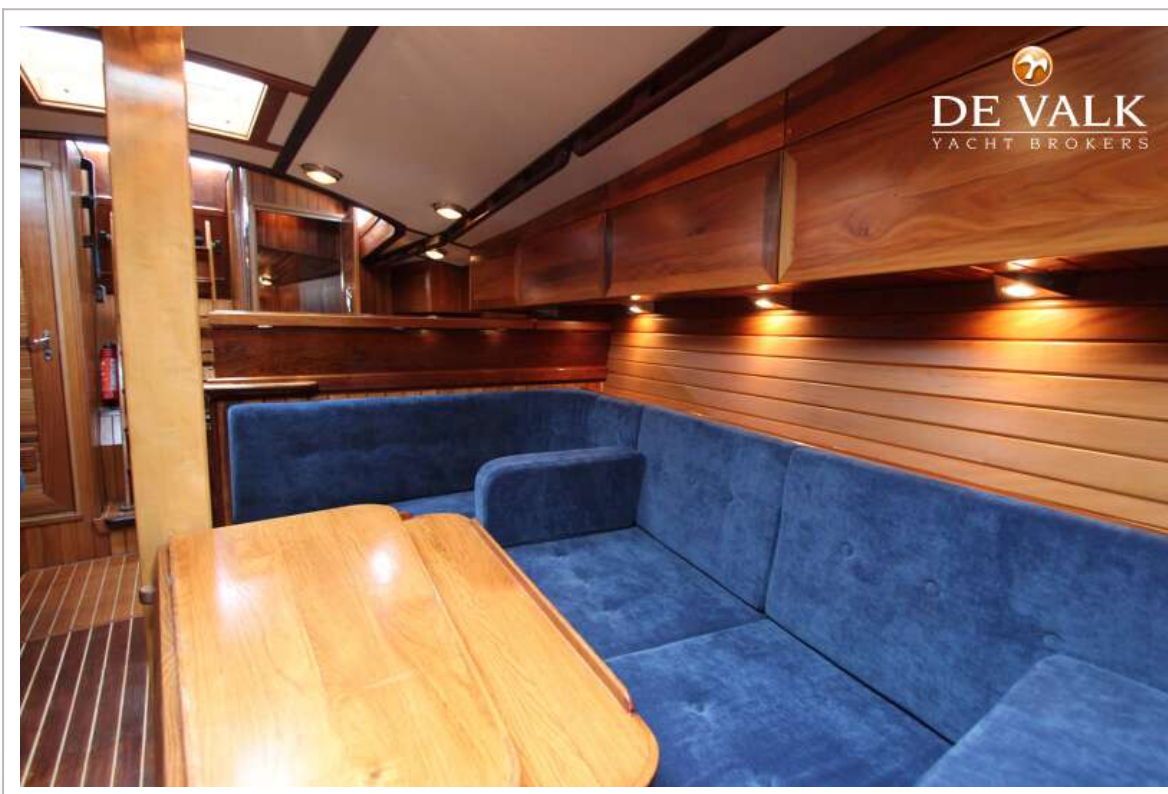
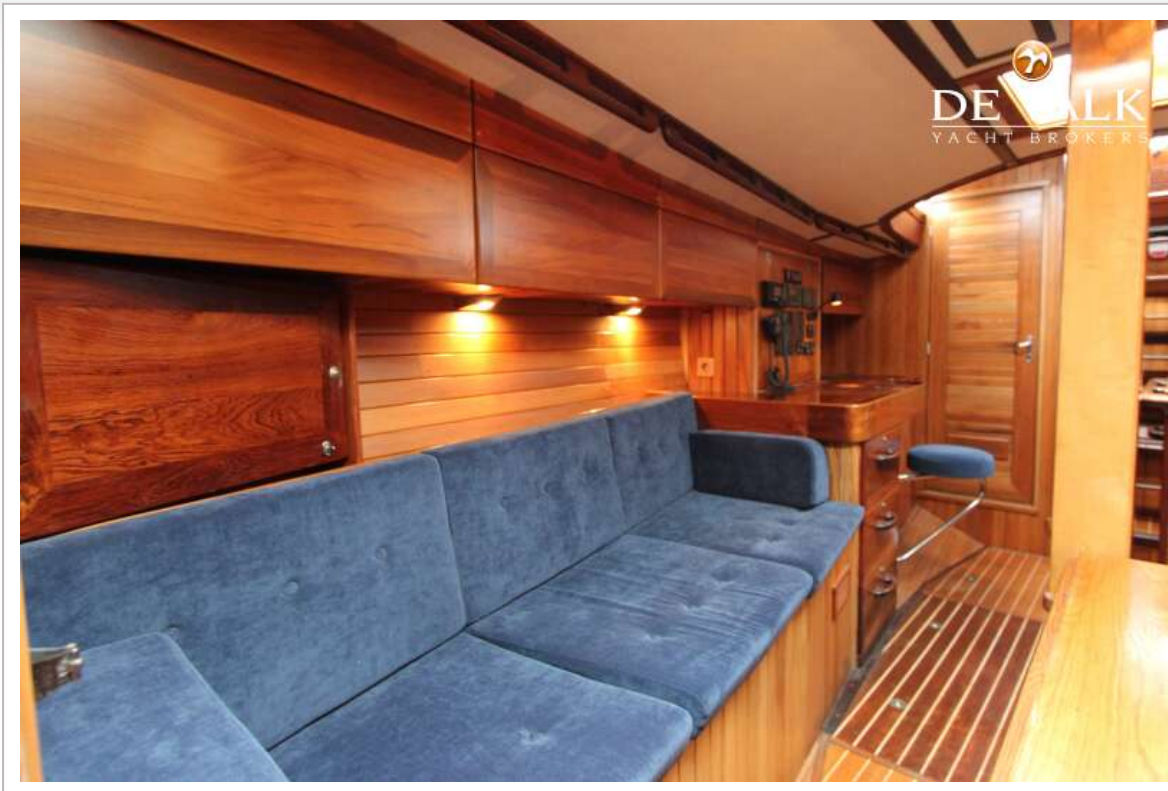


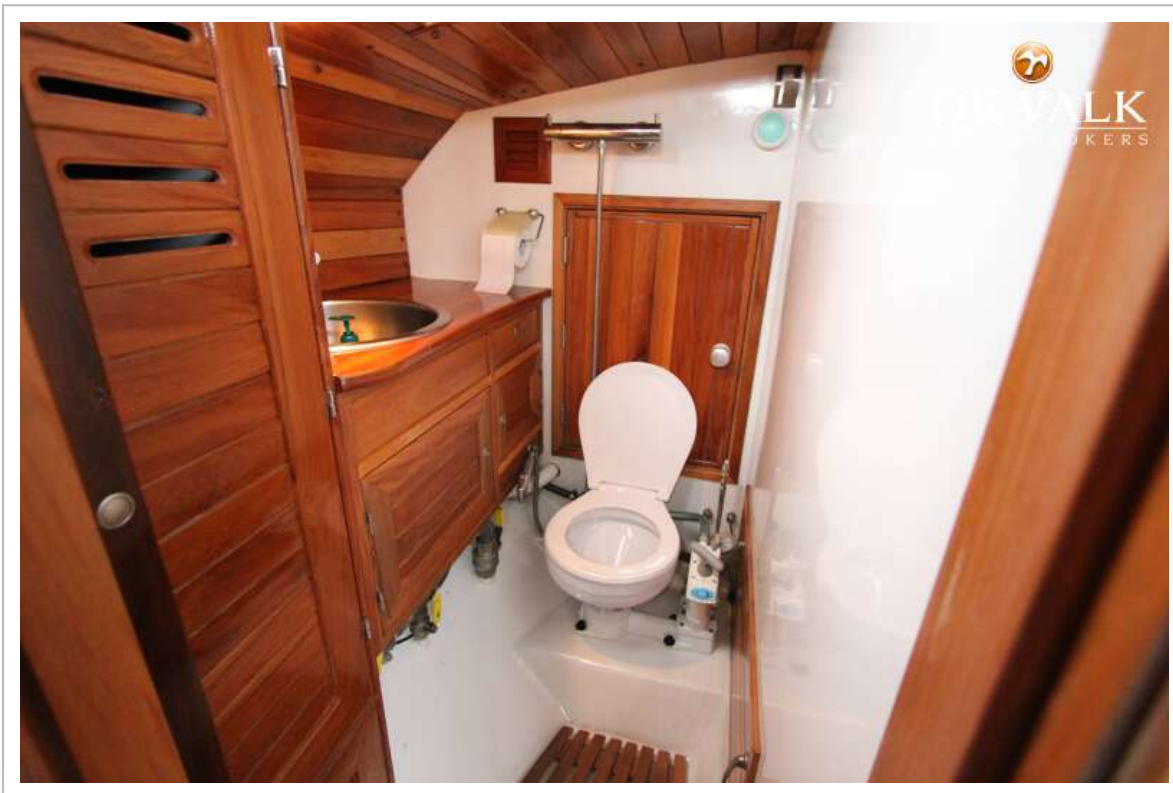
KOOPMANS 39











KOOPMANS 39



