



DE VALK  
YACHT BROKERS



ZEELANDER 7



DE VALK  
YACHT BROKERS

# ZEELANDER 7

## BROKER'S COMMENTS

The Zeelander 7 combines timeless Dutch craftsmanship with cutting-edge performance. Powered by triple Volvo IPS engines, she reaches up to 40 knots with exceptional stability and whisper-quiet cruising. Her elegant, bespoke interior offers spacious accommodations and premium finishes throughout. With less than 200 engine hours and still under warranty, this yacht is in near-new condition-fully serviced, meticulously maintained, and ready for immediate, turn-key enjoyment on the water.

*Nick Lanting*

## SPECIFICATIONS

<b>Dimensions</b>	20.30 x 6.00 x 1.50 (m)	<b>Builder</b>	Zeelander Yachts
<b>Built</b>	2024	<b>Cabins</b>	4
<b>Material</b>	GRP	<b>Berths</b>	7
<b>Engine(s)</b>	3 x Volvo Penta IPS 1350 diesel	<b>Hp/Kw</b>	3 x 1,000.00 (hp), 736.00 (kw)
<b>Asking price</b>	€ 5.495.000 (VAT Not paid)	<b>Lying</b>	The Netherlands

## CONTACT

<b>Sales office</b>	De Valk Thuishaven	<b>Telephone</b>	+31 35 5829042
<b>Address</b>	Marinaweg 8 (postal address) 1361 AC Almere NL	<b>E-mail</b>	thuishaven@devalk.nl

## DISCLAIMER

These particulars are given in good faith as supplied but cannot be guaranteed.



# ZEELANDER 7

## GENERAL

<b>Model</b>	ZEELANDER 7
<b>Type</b>	motor yacht
<b>LOA (m)</b>	20,30
<b>Beam (m)</b>	6,00
<b>Draft (m)</b>	1,50
<b>Air draft (m)</b>	5,10
<b>Year built</b>	2024
<b>Launched</b>	2025
<b>Builder</b>	Zeelander Yachts
<b>Country</b>	The Netherlands
<b>Designer</b>	Cor D. Rover
<b>Displacement (t)</b>	42
<b>CE norm</b>	A
<b>Hull material</b>	GRP
<b>Hull colour</b>	grey Porsche Agate Grey Metallic
<b>Hull shape</b>	deep-V
<b>Superstructure material</b>	GRP
<b>Rubbing strake</b>	stainless steel
<b>Deck material</b>	GRP
<b>Deck finish</b>	teak
<b>Superstructure deck finish</b>	non-skid moulded in
<b>Cockpit deck finish</b>	teak
<b>Antifouling (year)</b>	2025 Prop speed coating on propellers and IPS drives
<b>Window frame</b>	stainless steel
<b>Window material</b>	glass Laminated glass in windshield, aft door, aft window, portholes
<b>Deckhatch</b>	Skylight including manually operated blind in master cabin
<b>Portholes</b>	stainless steel
<b>Insulation</b>	yes
<b>Radar arch</b>	Zeelander design dome with stainless steel mast
<b>Fuel tank (litre)</b>	stainless steel 6000, in two tanks



# ZEELANDER 7

Level indicator (fuel tank)	yes
Freshwater tank (litre)	stainless steel 1500, in two tanks
Level indicator (freshwater)	yes
Blackwater tank (litre)	stainless steel 400
Level indicator (blackwater)	yes
Blackwater tank extraction	deck extraction + uw line
Inside helm position	yes
Emergency tiller	yes
More info on hull	Double waterline
More info on paintwork	Hull+superstructure: metallic base coat w/ marine UV clear coat
Extra info	Water separators dual fuel filters for each engine
Extra info	SS boat name and hailing port on transom
Extra info	LOA with platform open 22.20m

## ACCOMMODATION

Cabins	4
Berths	7
Crew cabin	yes
Crew berths	1
Floor	teak
Open cockpit	yes
Sliding roof	electric
Heating	yes
Air-conditioning	reverse cycle airco In cockpit as well
Dinette	yes
Dinette to convert into berth	yes
Sliding door to cockpit	yes
Galley	In cockpit
Countertop	Custom
Sink	With mixer hot/cold water tap
Cooker	ceramic Four zones



# ZEELANDER 7

<b>Microwave/oven combi</b>	yes
<b>Fridge</b>	2 x
<b>Freezer</b>	In cabinet hallway lower deck
<b>Hot water system</b>	400 liter
<b>Water pressure system</b>	electrical
<b>Dishwasher</b>	yes
<b>Ice maker</b>	yes
<b>Owners cabin</b>	double bed Forward
<b>Bed length (m)</b>	Queen size
<b>Wardrobe</b>	hanging and shelves
<b>Bathroom</b>	en suite
<b>Toilet</b>	In bathroom
<b>Toilet system</b>	electric
<b>Wash basin</b>	in the bathroom
<b>Shower</b>	separate In bathroom
<b>Extra info</b>	Vanity desk, smart TV in ceiling, hotel safe
<b>Guest cabin 1</b>	double bed To port
<b>Bed length (m)</b>	Queen size, can be split into two single beds
<b>Wardrobe</b>	hanging and shelves
<b>Bathroom</b>	en suite
<b>Toilet</b>	In bathroom
<b>Toilet system</b>	electric
<b>Wash basin</b>	in the bathroom
<b>Shower</b>	separate In bathroom
<b>Extra info</b>	Smart TV
<b>Guest cabin 2</b>	double bed To starboard
<b>Bed length (m)</b>	Queen size
<b>Wardrobe</b>	hanging and shelves
<b>Bathroom</b>	en suite
<b>Toilet</b>	In bathroom
<b>Toilet system</b>	electric
<b>Wash basin</b>	in the bathroom



# ZEELANDER 7

Shower	separate In bathroom
Extra info	Smart TV
Guest cabin 3	single bed Crew cabin
Wardrobe	hanging and shelves
Bathroom	yes
Toilet	en suite
Toilet system	electric
Wash basin	in the cabin
Shower	yes
Extra info	Smart TV
Washing machine/dryer combi	yes
Tender garage	Hydraulic door, electric winch, water tap for tender flush
Extra info	U-lounge (incl. ss boat name) on aft deck with two stool bar lay

## MACHINERY

No of engines	3
Make	Volvo Penta
Type	IPS 1350
HP	1000
kW	736
Fuel	diesel
Year installed	2024
Maximum speed (kn)	40
Cruising speed (kn)	32
Consumption (l/hr)	255
Range (nm)	3050
Engine hours	196
Engine cooling system	freshwater heat exchanger
Drive	IPS
Engine controls	electrical Second docking station to starboard side cockpit
Gearbox	hydraulic



# ZEELANDER 7

<b>Bowthruster</b>	yes
<b>Exhaust</b>	watercooled
<b>Propeller type</b>	fixed
<b>Propeller blades</b>	4+3
<b>Manual bilge pump</b>	1 x
<b>Electric bilge pump</b>	3 x, plus 3 Zeelander custom built dry bilge systems
<b>Bilge alarm</b>	yes
<b>Electrical installation</b>	12 V / 24 V / 230 V
<b>Generator</b>	17,5 kVA / 50 Hz
<b>Batteries</b>	yes
<b>Start battery</b>	2x 12V (= 24V) for each engine
<b>Service battery</b>	1 x 12 V, 2x 12 V (= 24V)
<b>Generator battery</b>	1 x 12 V
<b>Battery charger</b>	yes
<b>Diode battery combiners</b>	yes
<b>Shorepower</b>	Electric cable reel PS & STB side with s/s cable guide
<b>Insulation transformer</b>	yes
<b>Trimtabs</b>	Interceptor (trim) system
<b>Extra info</b>	Indicated consumption ist at 26 kts, Indicated range is at 7 kts
<b>Extra info</b>	Volvo Penta cruiser control, low-speed mode, DPS
<b>Extra info</b>	Volvo Active Corrosion Protection system (ACP kit)

## NAVIGATION

<b>Electric compass</b>	Volvo Penta plus handheld
<b>Multi control display</b>	Three Garmin 19" touch screen displays
<b>Depth sounder</b>	yes
<b>Log</b>	yes
<b>VHF</b>	yes
<b>Autopilot</b>	Volvo Penta
<b>Rudder angle indicator</b>	yes
<b>Radar</b>	Garmin 24" HD



# ZEELANDER 7

GPS	yes
Plotter	yes
AIS transceiver	AIS B
Camera	Front and rear facing, readout on plotter
Navigation lights	yes
Extra info	Garmin glass bridge system with three 19" touch screens

## EQUIPMENT

Fixed windscreen	yes
Fixed hardtop	yes
Bimini	Electrical controlled sun awning on aftdeck
Sun awning	Bimini extension for bow deck with stainless steel supports
Cockpit cushions	yes
Cockpit table	Table with two s/s pedestals, converts to lounge
Bathing platform	Hydraulic
Boarding ladder	yes
Transom door	yes
Gangway	Hydraulic passarelle
Deck shower	Shower (hot/cold) with 2.5m shower hose
Anchor	80 kg
Anchor chain	80 m, eck/anchor wash connection with hose in chain locker
Windlass	electrical Reversible electric anchor winch
Capstan	Two (2) stainless steel mooring winches
Deck wash	Built-in Pure Water Wash System including washing equipment
Dinghy	Williams 325 turbojet tender including release system
Sea railing	stainless steel
Grab rail (superstructure)	stainless steel
Pulpit	yes
Lifejackets	yes
Lifebuoy	Man overboard Life Sling with 100ft floating line
Wiper	Heavy duty wipers with interval and integrated nozzles





# ZEELANDER 7

<b>Horn</b>	air pressure Kahlenberg horn D330
<b>Fenders</b>	8 x
<b>Mooring lines</b>	6 x
<b>TV</b>	High gloss painted cabinet with TV mounted on a slide down lift
<b>Radio</b>	Fusion, high-end audio system with speakers, woofers, amps
<b>Sub-woofer</b>	yes
<b>Cockpit speakers</b>	yes
<b>Speakers in cabin</b>	yes
<b>Fire extinguisher</b>	yes
<b>Extinguisher in engine room</b>	yes
<b>Auto extinguisher system</b>	yes
<b>Extra info</b>	Audio zones on aft deck, bow deck, wheelhouse, all cabins
<b>Extra info</b>	WiFi router
<b>Extra info</b>	RGB mood lights, Underwater lights 8 x



# ZEELANDER 7



# ZEELANDER 7

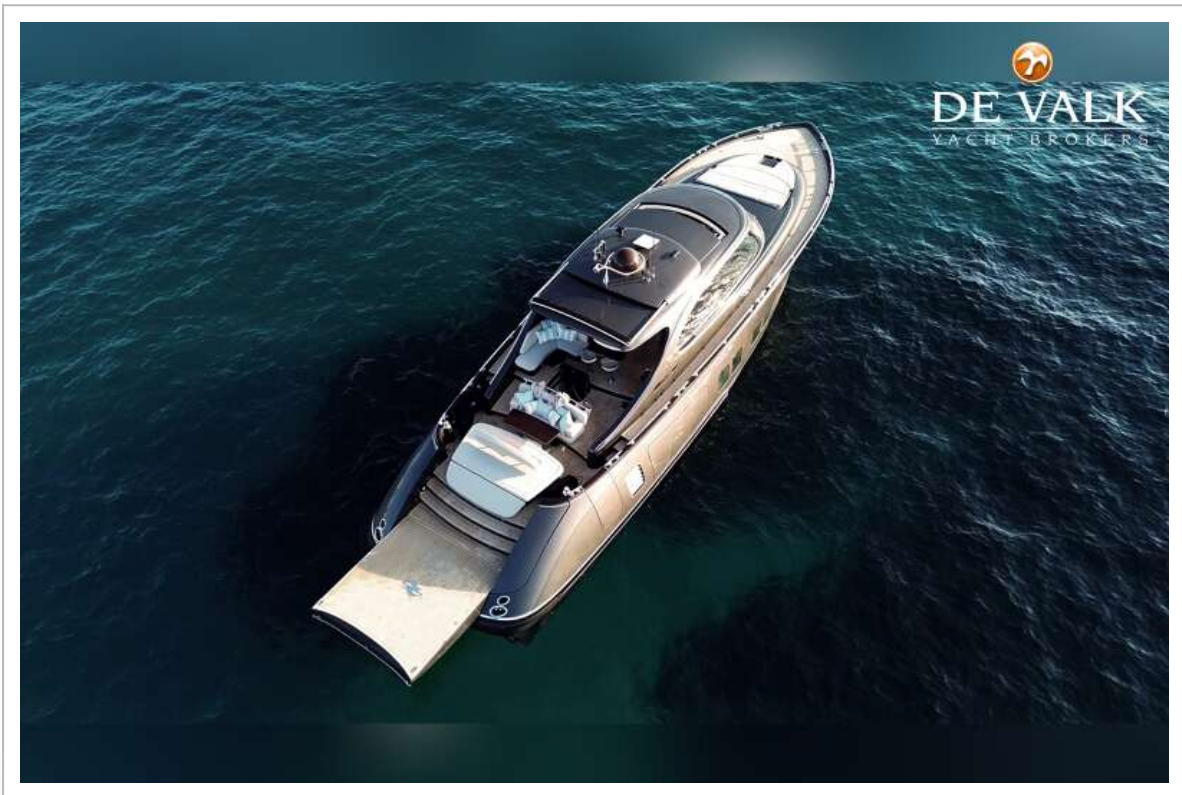
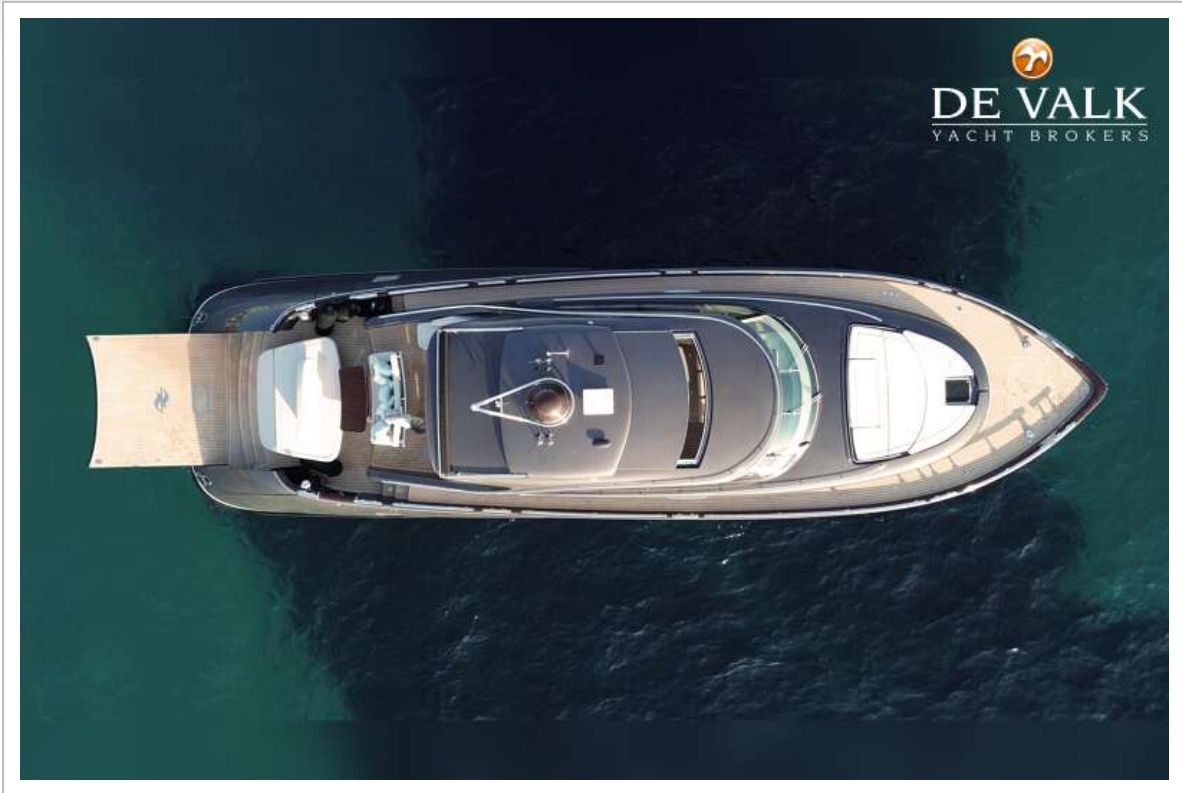




# ZEELANDER 7



# ZEELANDER 7

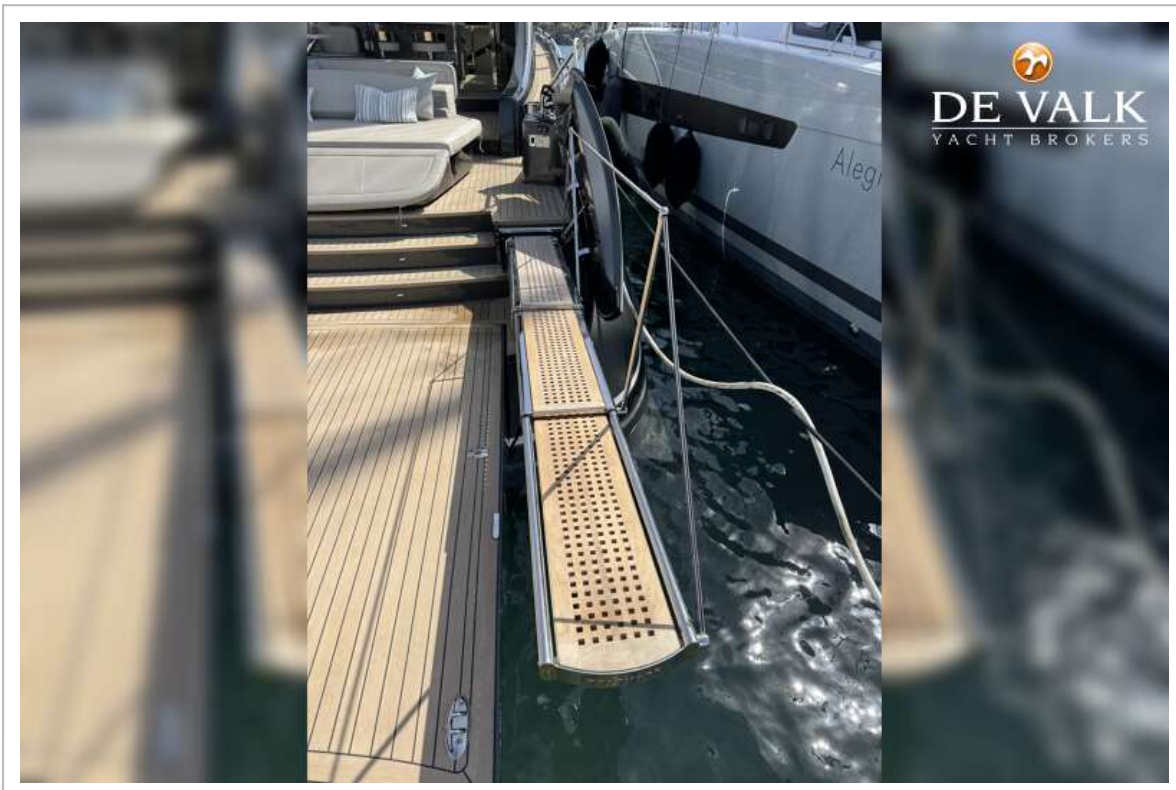




# ZEELANDER 7



# ZEELANDER 7



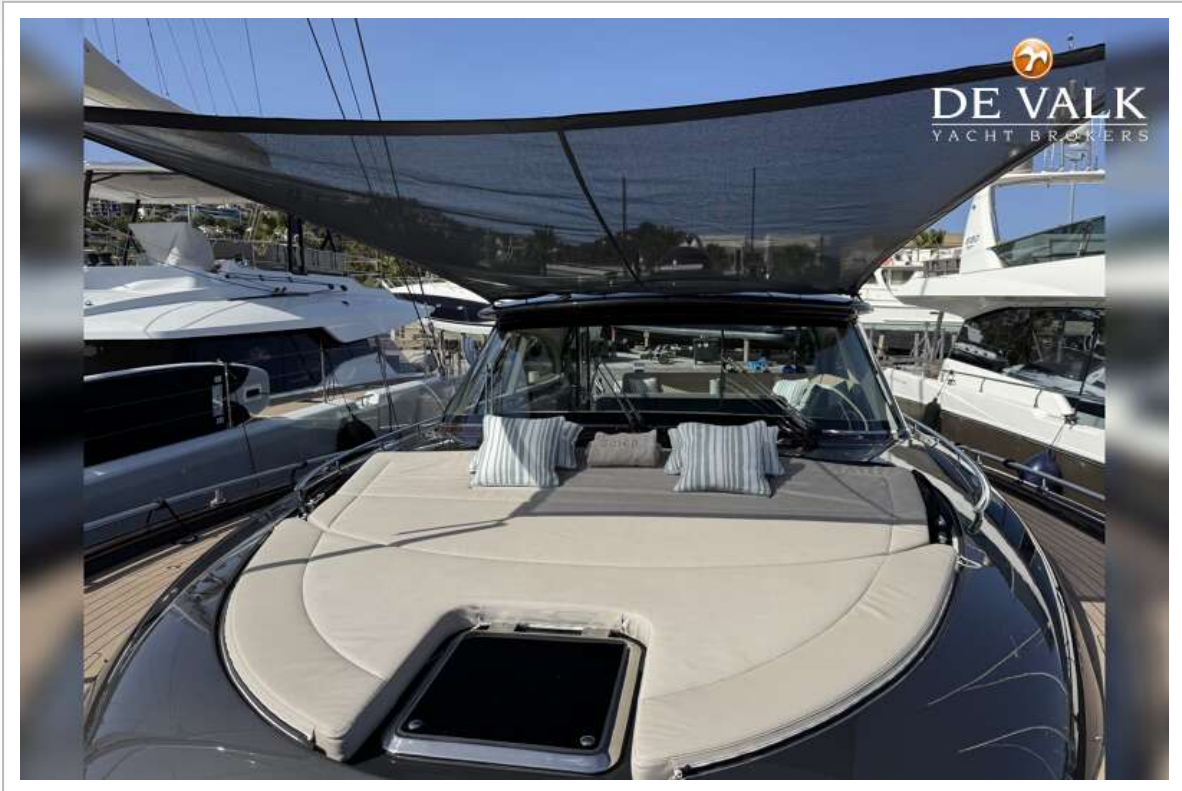


# ZEELANDER 7





# ZEELANDER 7

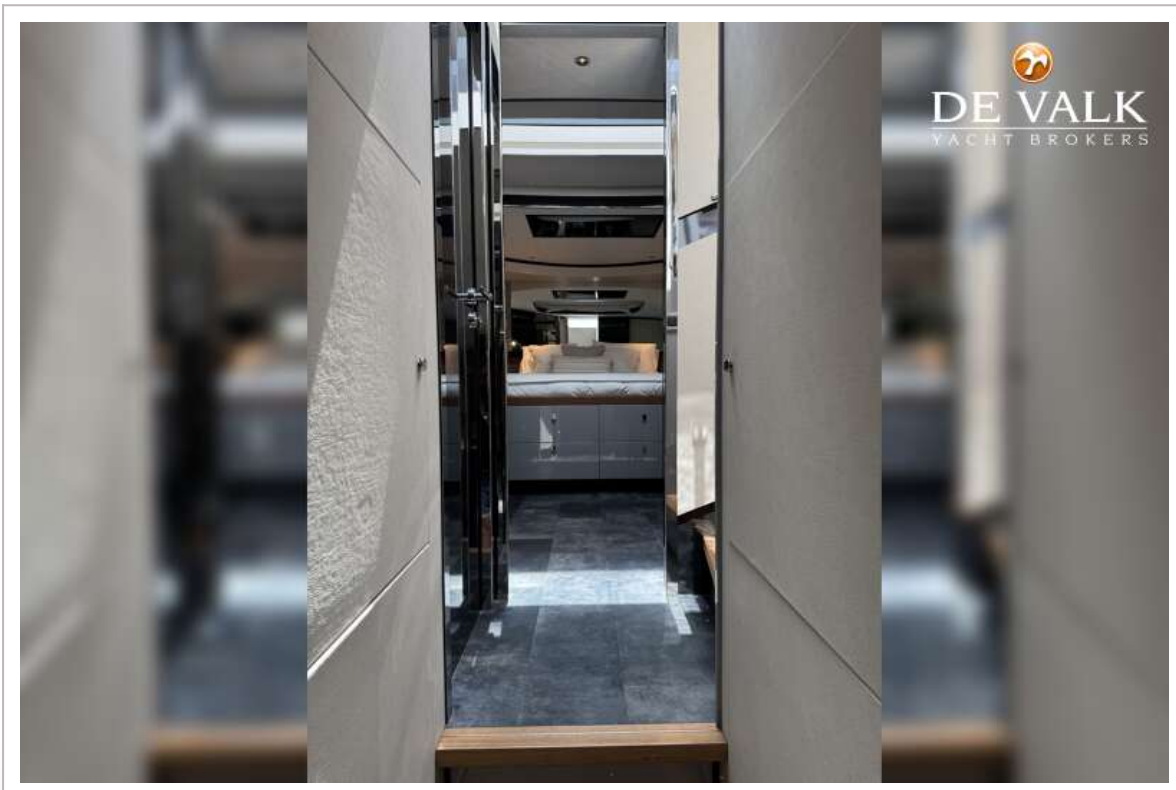
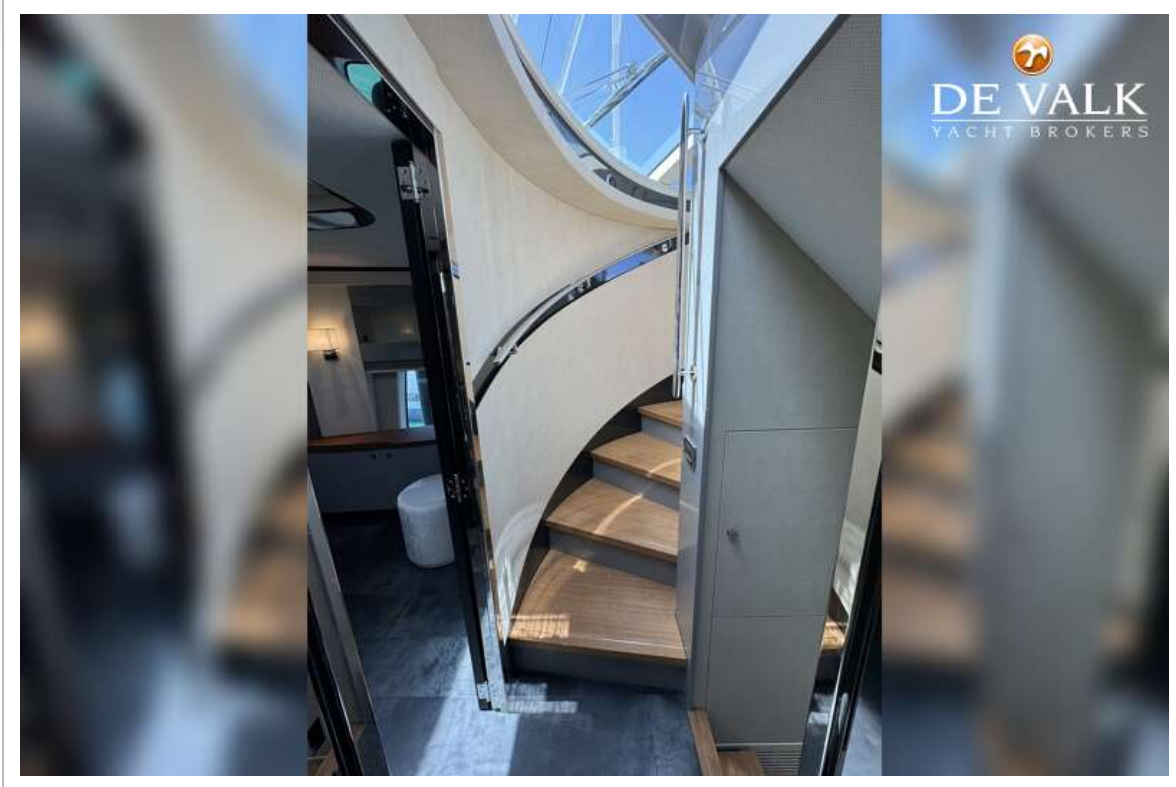


# ZEELANDER 7





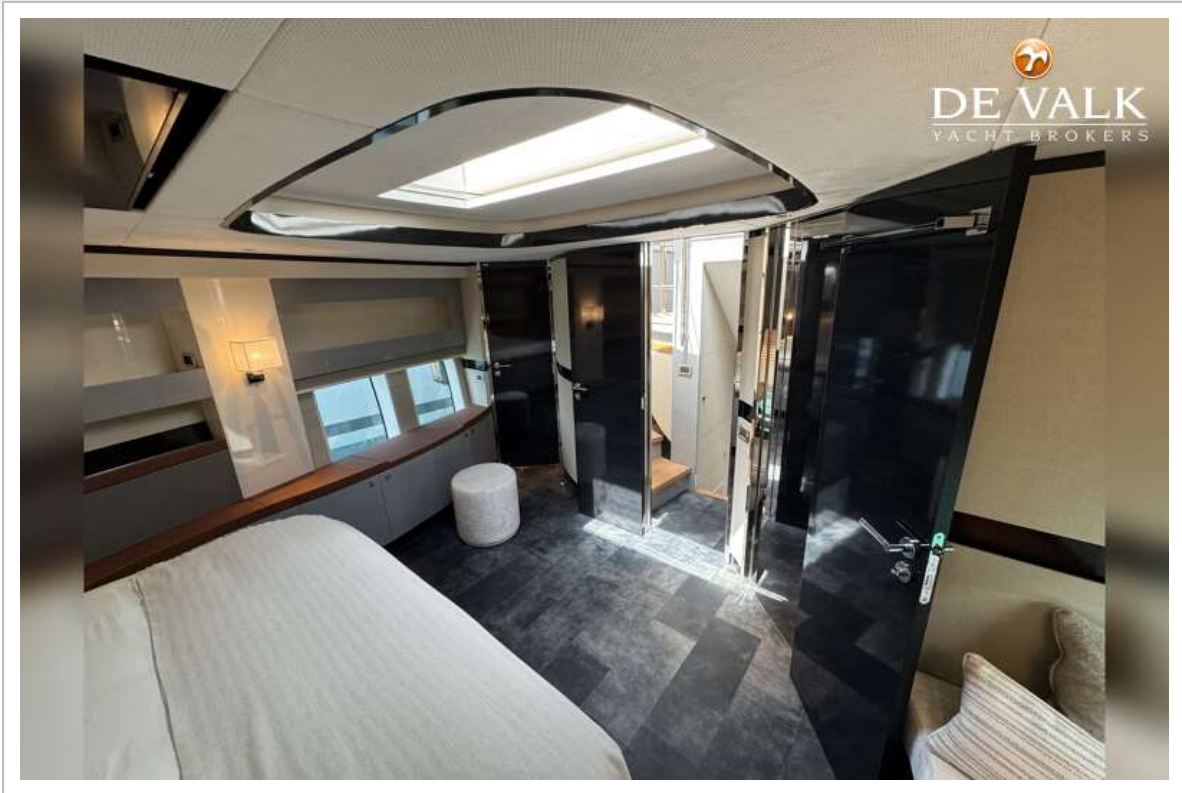
# ZEELANDER 7



# ZEELANDER 7



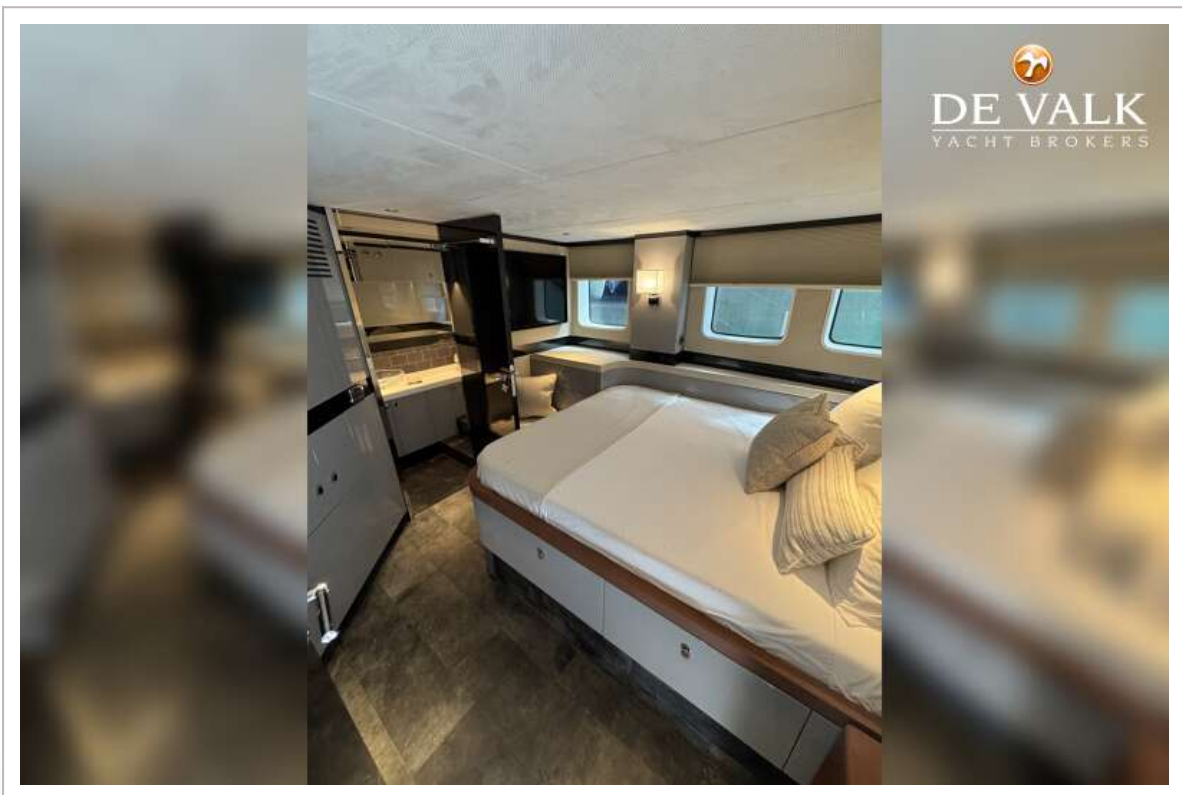
# ZEELANDER 7



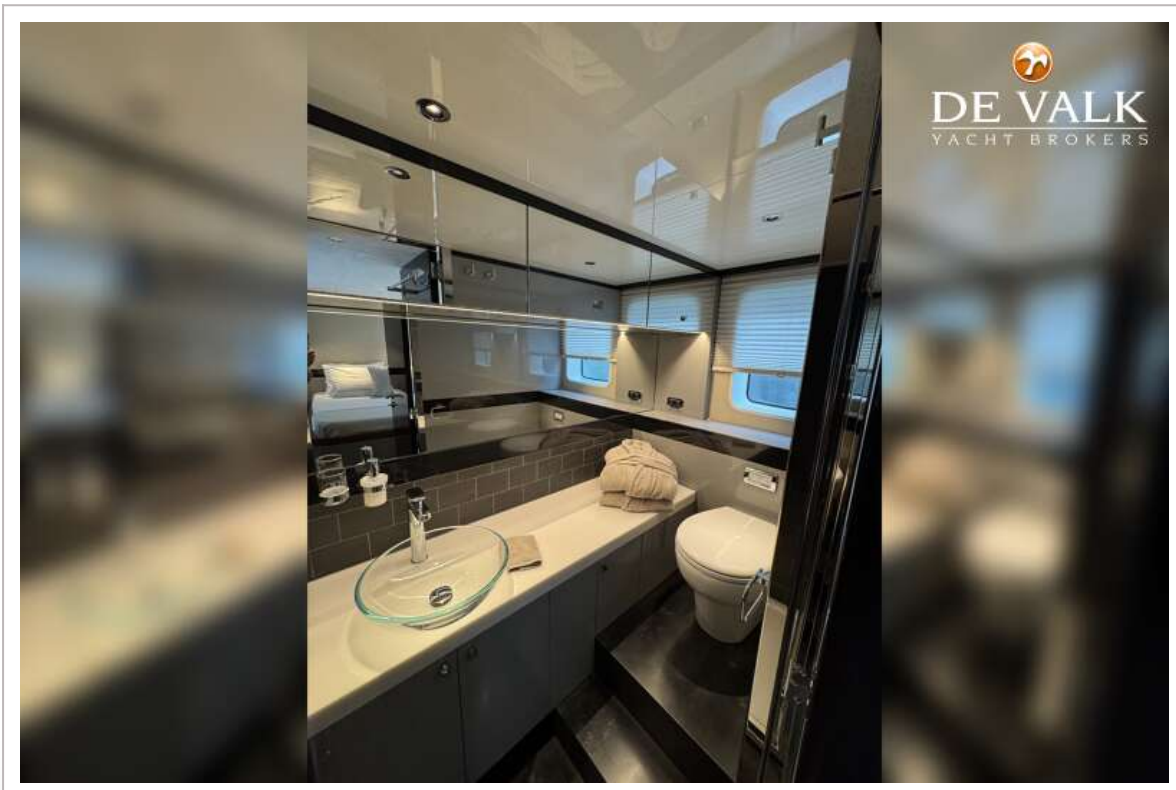




# ZEELANDER 7



# ZEELANDER 7

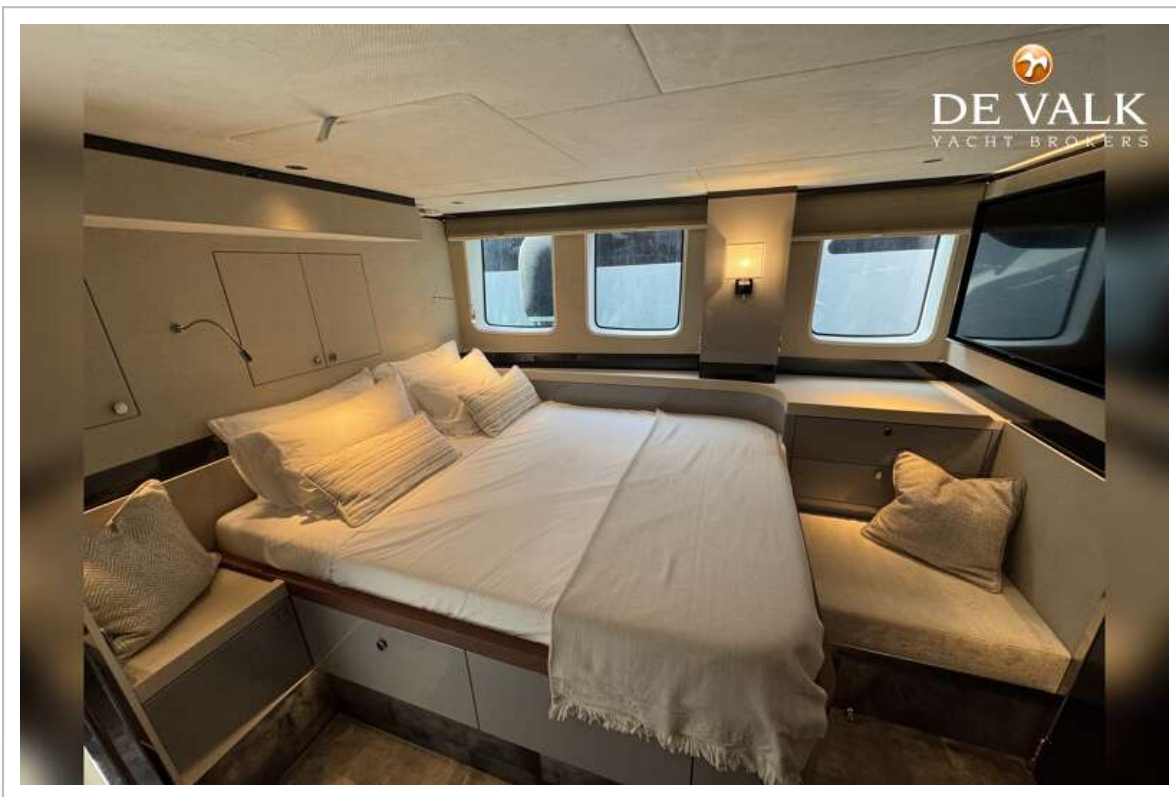
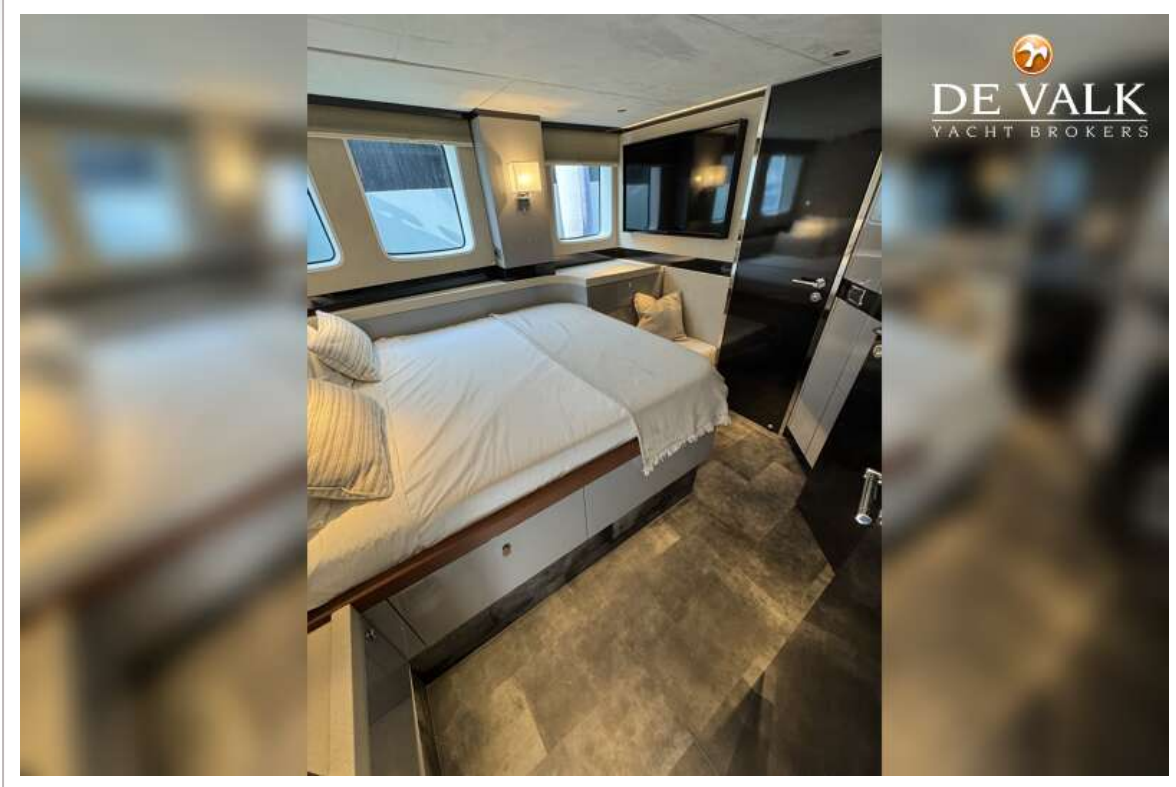




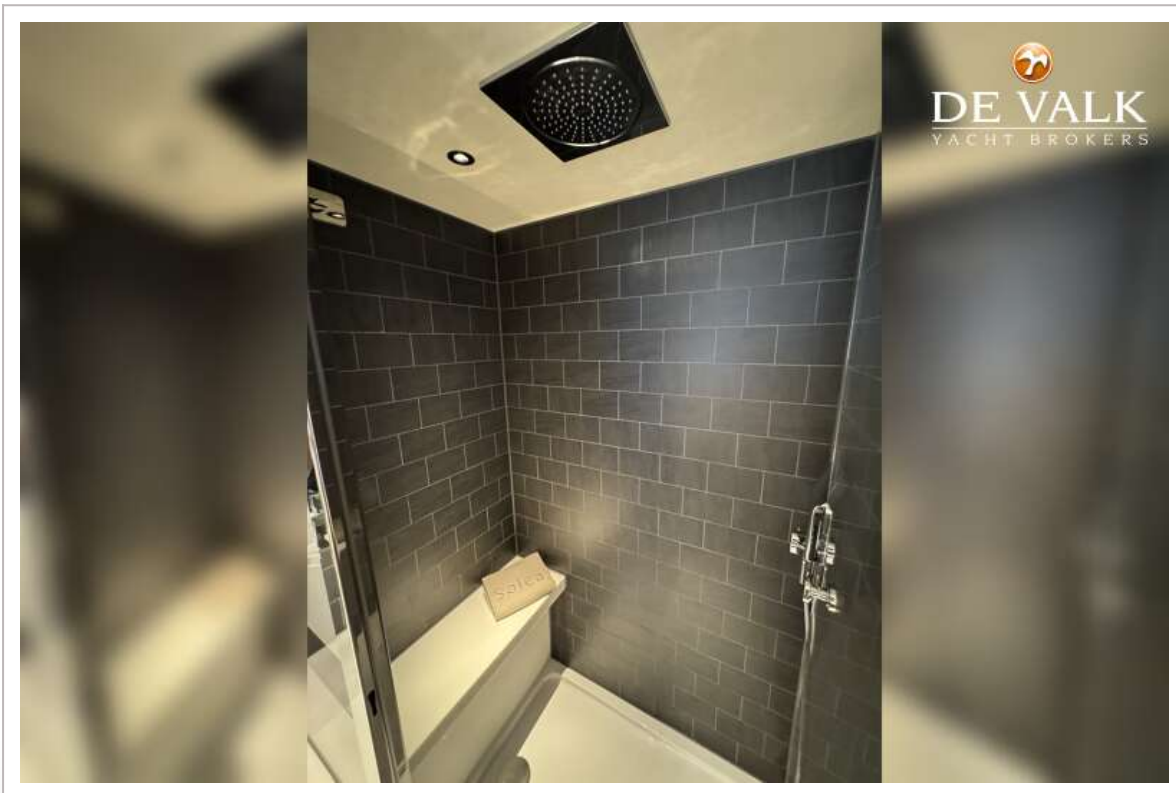
# ZEELANDER 7



# ZEELANDER 7

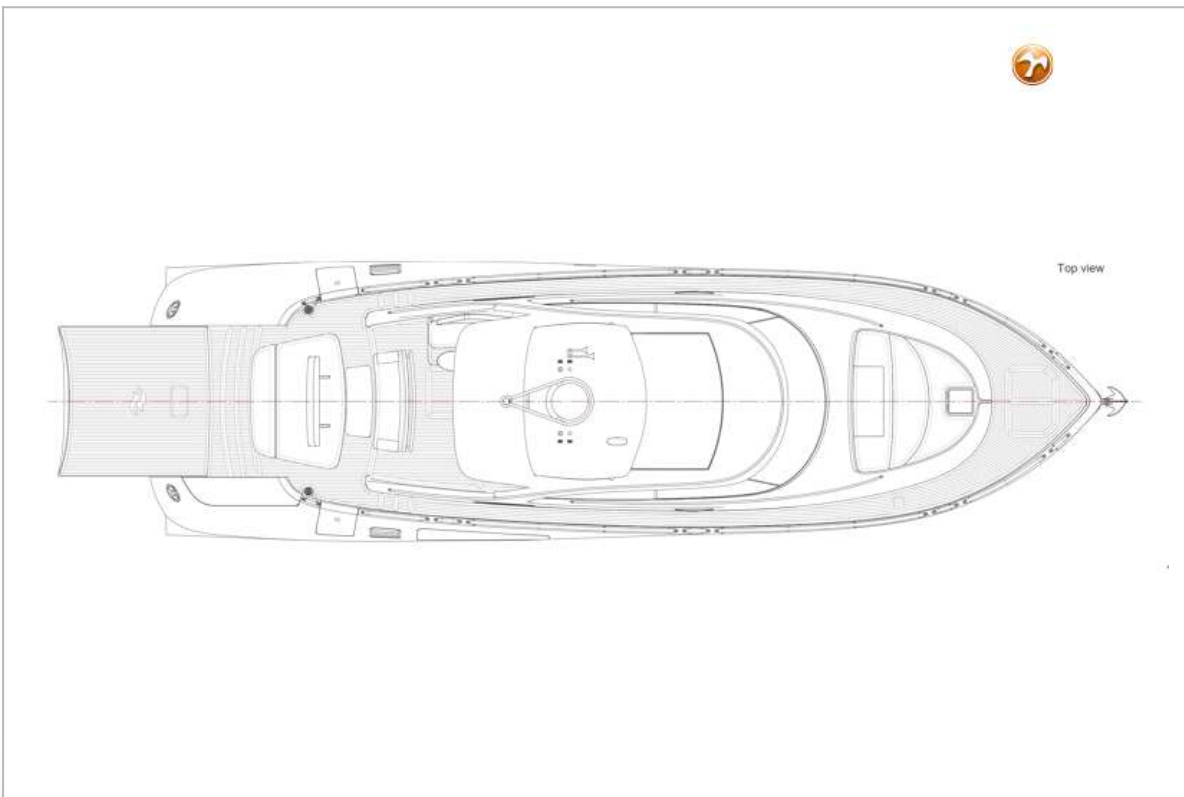
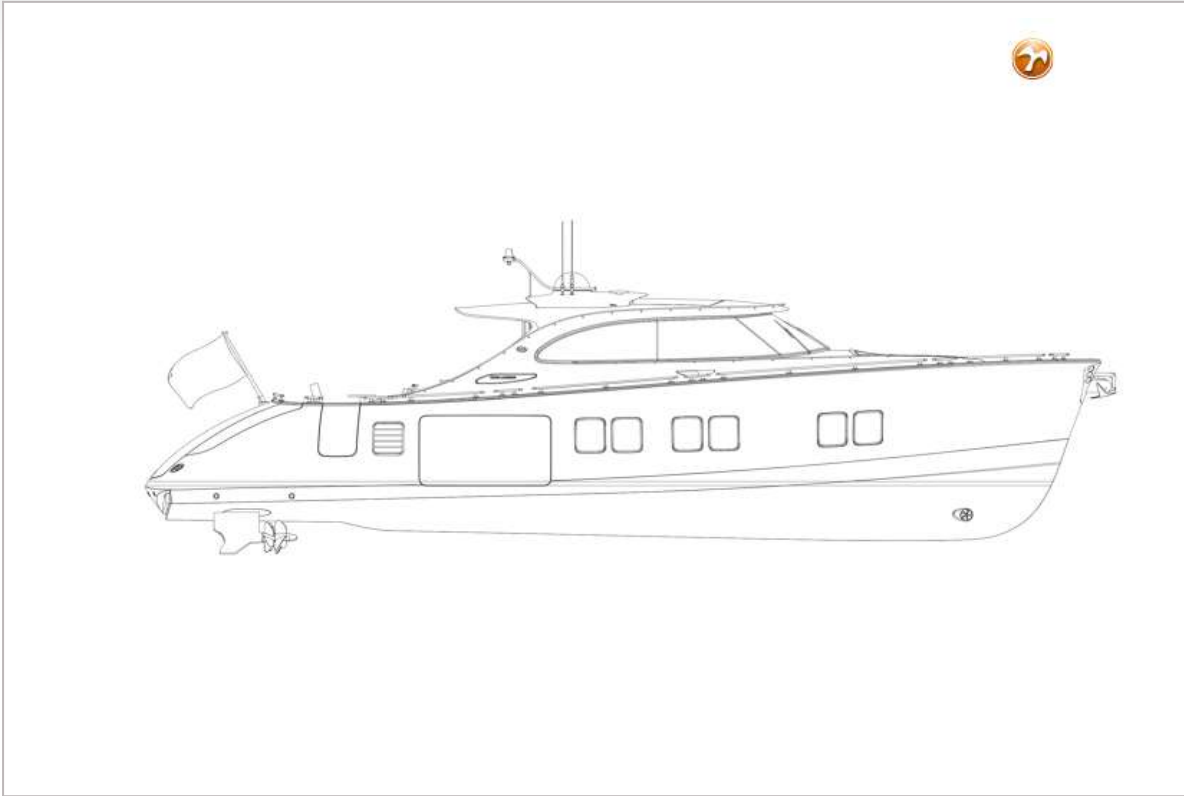


# ZEELANDER 7





# ZEELANDER 7



# ZEELANDER 7

