



## HARMONY 47

# HARMONY 47

## BROKER'S COMMENTS

This Harmony 47 combines comfort, practical cruising design, and solid French construction by Groupe Poncin Yachts (former Dufour). Known for her spacious saloon, generous cabins, and safe deck layout, the Harmony 47 is ideal for extended passages or relaxed family sailing. Well maintained and with significant investments by the current owner, she is ready for her next adventures. This Harmony 47 is located in Nieuwpoort, Belgium on shore and can be visited by appointment.

*Joris van de Rijt*

## SPECIFICATIONS

<b>Dimensions</b>	14.39 x 4.25 x 2.10 (m)	<b>Builder</b>	Groupe Poncin Yachts
<b>Built</b>	2007	<b>Cabins</b>	3
<b>Material</b>	GRP	<b>Berths</b>	6
<b>Engine(s)</b>	1 x Volvo Penta D2-75 diesel	<b>Hp/Kw</b>	75.00 (hp), 55.20 (kw)
<b>Asking price</b>	€ 115.000 (VAT Paid)	<b>Lying</b>	elsewhere / Not at sales office

## CONTACT

<b>Sales office</b>	De Valk Belgium	<b>Telephone</b>	+32 586 80 218
<b>Address</b>	1401 PT Nieuwpoort BE	<b>E-mail</b>	belgium@devalk.nl

## DISCLAIMER

These particulars are given in good faith as supplied but cannot be guaranteed.



# HARMONY 47

## GENERAL

<b>Model</b>	HARMONY 47
<b>Type</b>	sailing yacht
<b>LOA (m)</b>	14,39
<b>Beam (m)</b>	4,25
<b>Draft (m)</b>	2,10
<b>Air draft (m)</b>	18,30
<b>Headroom (m)</b>	1,95
<b>Year built</b>	2007
<b>Builder</b>	Groupe Poncin Yachts
<b>Country</b>	France
<b>Designer</b>	Alain Mortain & Yannis Mavrikios
<b>Displacement (t)</b>	10,6
<b>Ballast (tonnes)</b>	lead 3,5
<b>CE norm</b>	A
<b>Hull material</b>	GRP
<b>Hull colour</b>	white With blue striping
<b>Hull shape</b>	round-bilged
<b>Keel type</b>	fin keel with bulb
<b>Superstructure material</b>	GRP
<b>Deck material</b>	GRP
<b>Deck finish</b>	non-skid moulded in
<b>Superstructure deck finish</b>	non-skid moulded in
<b>Cockpit deck finish</b>	teak
<b>Antifouling (year)</b>	2026
<b>Dorades</b>	2 x
<b>Window frame</b>	aluminium
<b>Window material</b>	perspex
<b>Deckhatch</b>	3 x
<b>Fuel tank (litre)</b>	200
<b>Level indicator (fuel tank)</b>	yes



Freshwater tank (litre)	500
Level indicator (freshwater)	yes
Blackwater tank (litre)	2 x (one is disconnected)
Blackwater tank extraction	deck extraction + uw line
Wheel steering	Lewmar
Emergency tiller	yes
More info on hull	Underwaterbody + keel new primer & antifouling 2021
Extra info	New teak foot rail 2021

## ACCOMMODATION

Cabins	3
Berths	6
Floor	woodprint
Headroom saloon (m)	1,95
Heating	diesel ducted hot air Eberspacher
Chart table	yes
Aft Cabin	2 x
Dinette	yes
Galley	yes
Countertop	corian
Sink	stainless steel
Cooker	calor gas 2 burner
Oven	yes
Fridge	Toploader 160L
Hot water system	220V + engine
Water pressure system	electrical
Owners cabin	double bed
Bed length (m)	2,00 x 1,40
Wardrobe	hanging and shelves
Bathroom	en suite
Toilet	en suite Seperate



# HARMONY 47

<b>Toilet system</b>	manual
<b>Wash basin</b>	at the toilet
<b>Shower</b>	en suite Seperate
<b>Guest cabin 1</b>	double bed Port side
<b>Bed length (m)</b>	1,95 x 1,50
<b>Wardrobe</b>	hanging and shelves
<b>Bathroom</b>	shared
<b>Toilet</b>	shared
<b>Toilet system</b>	manual
<b>Wash basin</b>	in the bathroom
<b>Shower</b>	shared
<b>Guest cabin 2</b>	double bed Starbord side
<b>Bed length (m)</b>	1,95 x 1,50
<b>Wardrobe</b>	hanging and shelves

## MACHINERY

<b>No of engines</b>	1
<b>Make</b>	Volvo Penta
<b>Type</b>	D2-75
<b>HP</b>	75
<b>kW</b>	55.20
<b>Fuel</b>	diesel
<b>Year installed</b>	2007
<b>Engine hours</b>	434
<b>Engine cooling system</b>	freshwater heat exchanger
<b>Drive</b>	shaft
<b>Engine controls</b>	bowden cable
<b>Bowthruster</b>	electric Vetus
<b>Propeller type</b>	feathering Max Prop
<b>Propeller blades</b>	4
<b>Propeller shaft material</b>	stainless steel



<b>Shaft lubrication</b>	water Volvo Seal + shaft bearing (2019)
<b>Manual bilge pump</b>	yes
<b>Electric bilge pump</b>	yes
<b>Electrical installation</b>	12V / 230V
<b>Start battery</b>	yes
<b>Service battery</b>	2 x 160 Ah (2025)
<b>Bowthruster battery</b>	(2025)
<b>Battery charger</b>	Victron
<b>Shorepower</b>	with cable
<b>Extra info</b>	All through hull fittings + seacocks replaced 2021

## NAVIGATION

<b>Compass</b>	Plastimo
<b>Depth sounder</b>	Raymarine (2021)
<b>Log</b>	Raymarine (2021)
<b>Windset</b>	Raymarine (2021)
<b>Repeater</b>	Raymarine (2021)
<b>VHF</b>	Standard Horizon GX1700E
<b>VHF handheld</b>	Standard Horizon HX890
<b>Autopilot</b>	Furuno
<b>Radar</b>	yes
<b>Plotter</b>	Raymarine Axiom 9 (2021)
<b>AIS receiver</b>	yes
<b>AIS transponder</b>	Raymarine AIS 700 with splitter
<b>Navigation lights</b>	yes

## EQUIPMENT

<b>Sprayhood</b>	(2015) new windows 2023
<b>Bimini</b>	(2024)
<b>Winter cover</b>	From mast to cockpit
<b>Cockpit table</b>	Foldable



Bathing platform	Foldable
Boarding ladder	stainless steel
Deck shower	Hot + cold
Anchor	Delta
Anchor chain	50 m
Windlass	electrical Lewmar
Dinghy	inflatable Honwave
Outboard	Honda 2,3
Sea railing	wire
Grab rail (superstructure)	teak
Railing side opening gates	2 x
Life raft	container 4 persons
Last life raft survey	2022-2027
Lifebuoy	yes
Danbuoy	yes
Fenders	yes
Mooring lines	(2024)
TV	With DVB-T antenna in mast
Clock - barometer	yes
Fire extinguisher	yes

## RIGGING

Rigging	fractional
Standing rigging	wire
Brand mast	VMG Soromap
Material mast	aluminium
Spreaders	2 sets
Mainsail cover	Lazybag (2024)
Battcars	(with new Facnor Facslide mastrail 2024)
Fully battened mainsail	(2012) + original mainsail
Genoa	(2012)



<b>Genoa furler</b>	Facnor (2021)
<b>Gennaker</b>	With Furling system
<b>Reefing System</b>	quick-one-line-reefing
<b>Boomvang</b>	gasspring
<b>Genoa sheetwinches</b>	2 x Harken 48 ST
<b>Halyard winches</b>	1 x Harken 48 ST + 1 x Harken 48 ST Electric
<b>Gennaker pole</b>	Fixed for Gennaker + Anchor



# HARMONY 47



# HARMONY 47



# HARMONY 47



# HARMONY 47



# HARMONY 47



# HARMONY 47



# HARMONY 47



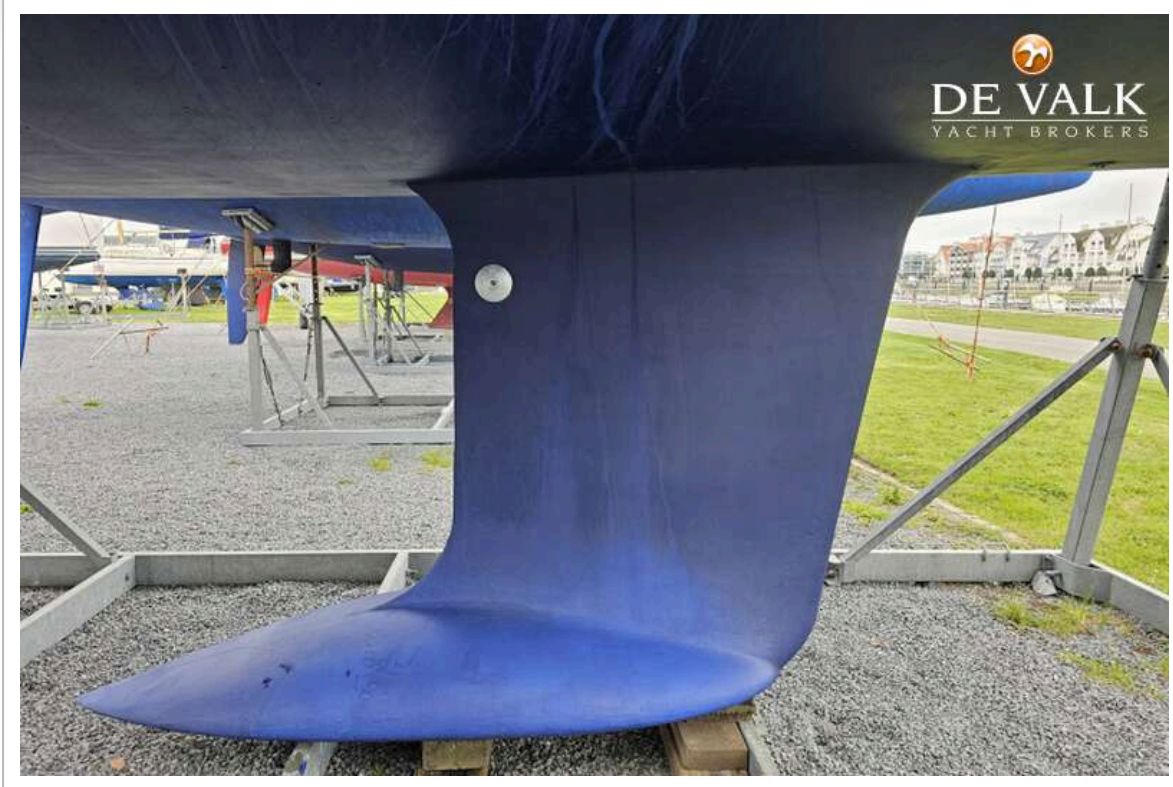
# HARMONY 47



# HARMONY 47



# HARMONY 47



# HARMONY 47



# HARMONY 47



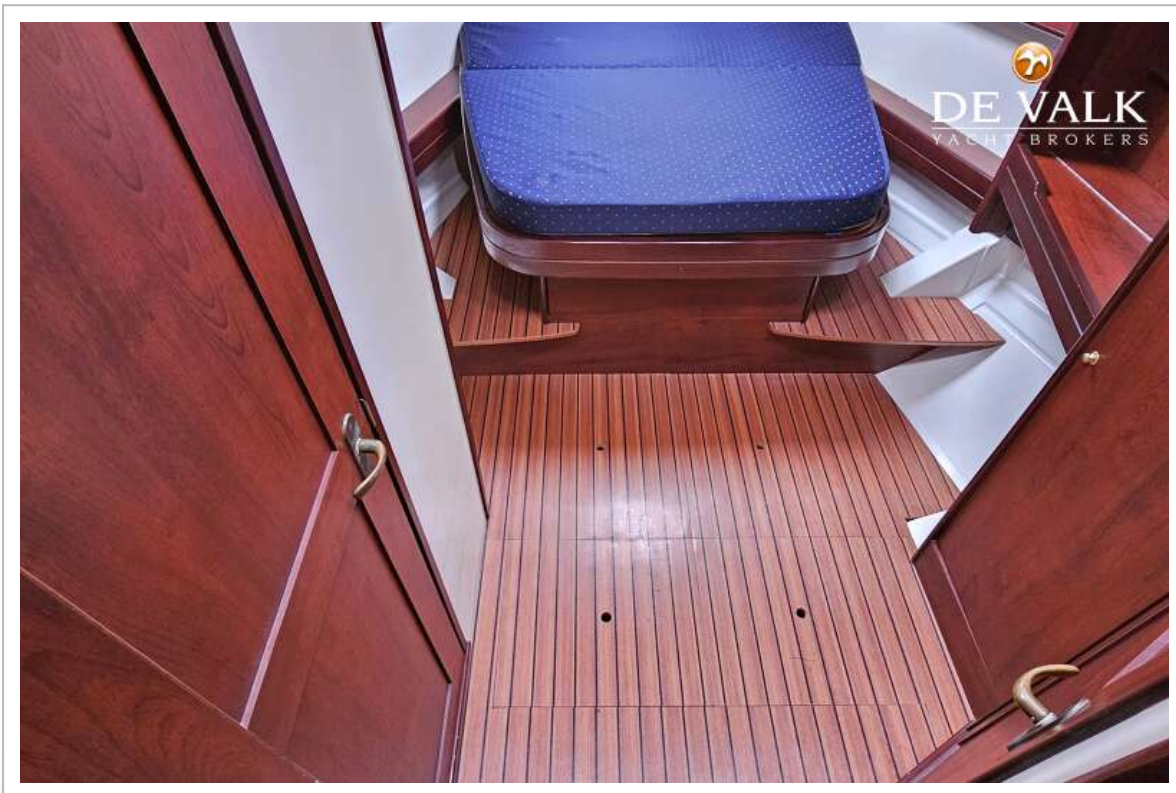
# HARMONY 47



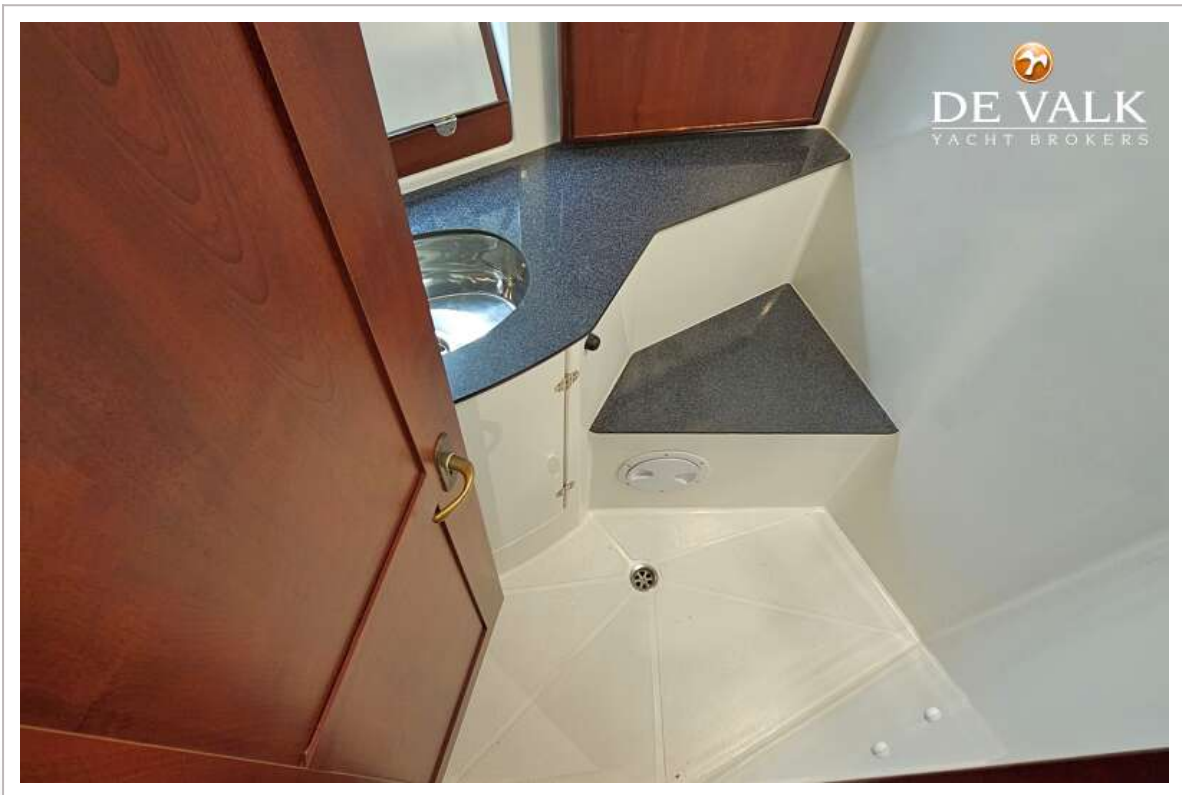
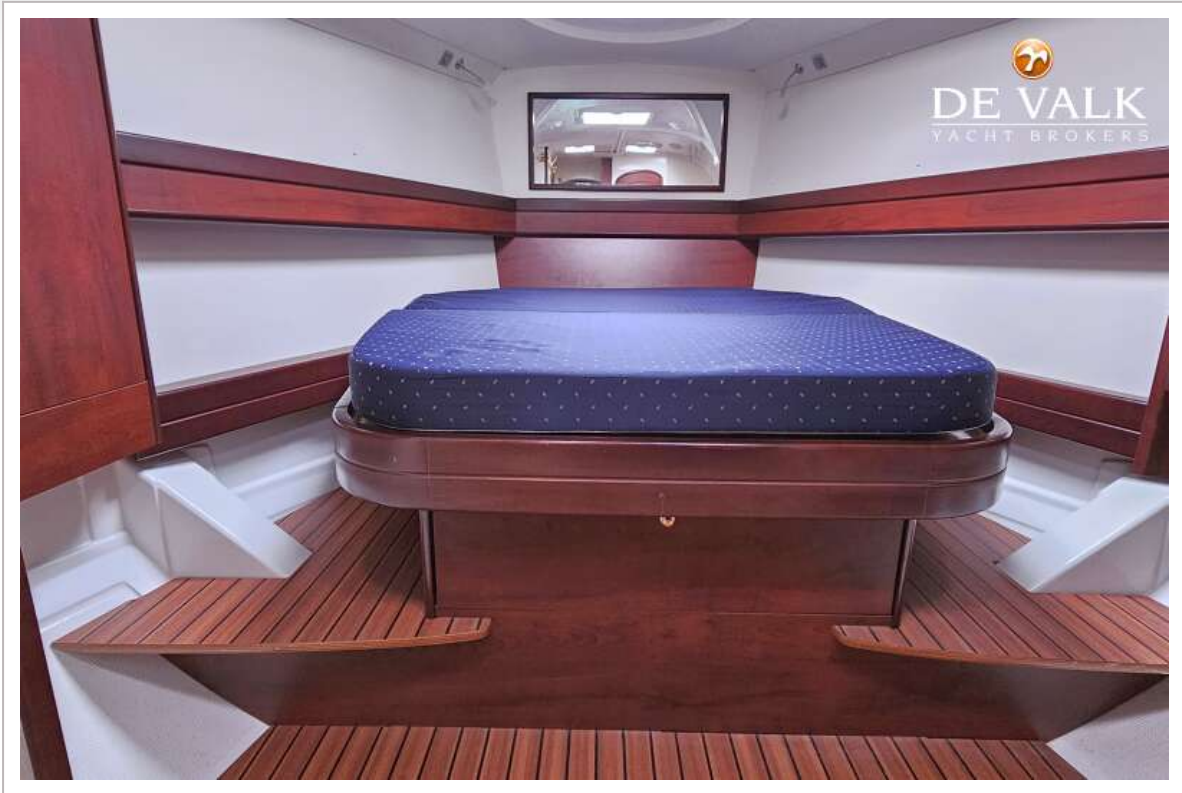
# HARMONY 47



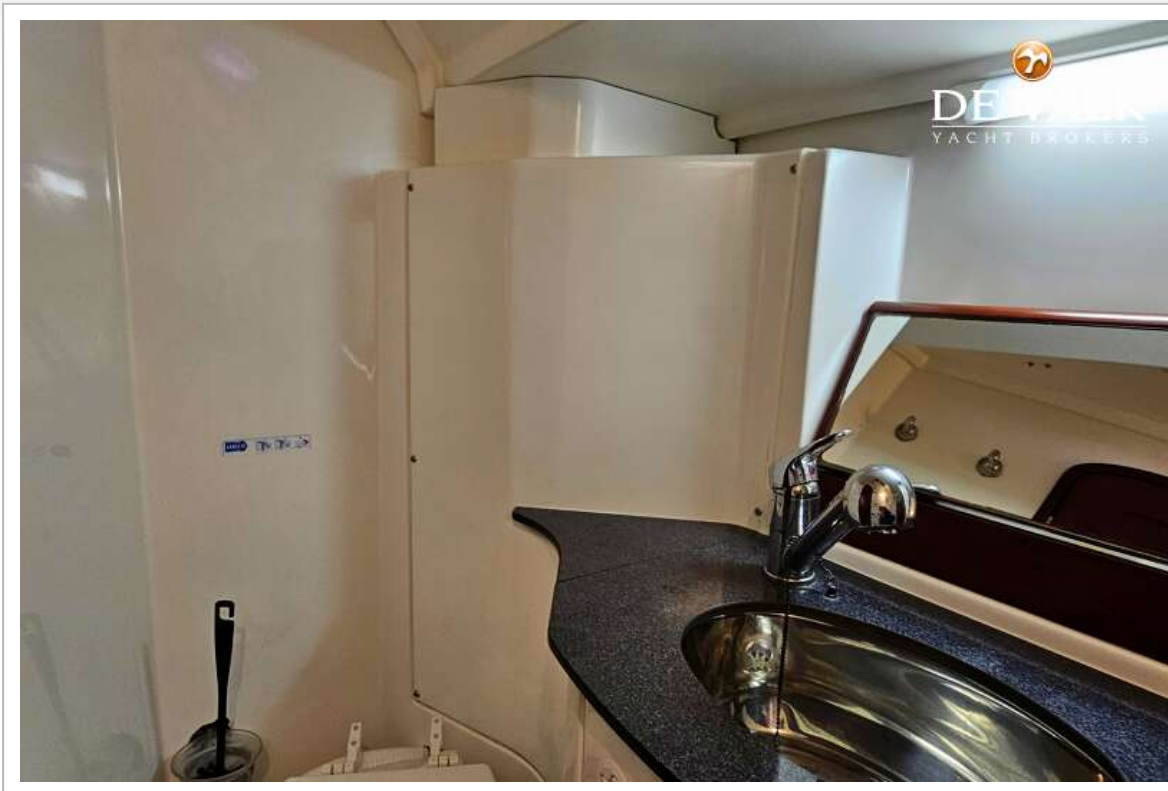
# HARMONY 47



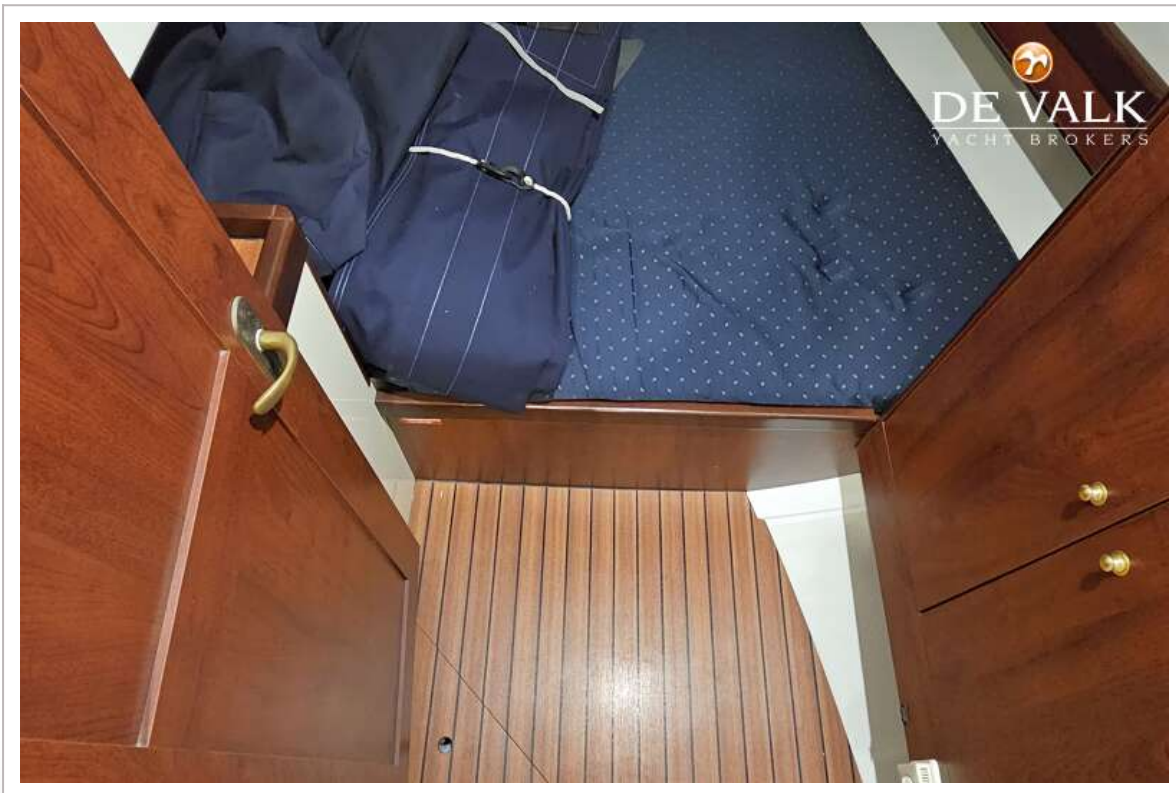
# HARMONY 47



# HARMONY 47



# HARMONY 47



# HARMONY 47

