



DE VALK  
YACHT BROKERS



## RIVA 58 BAHAMAS



DE VALK  
YACHT BROKERS

# RIVA 58 BAHAMAS

## BROKER'S COMMENTS

A true icon of style and performance: the Riva 58 Bahamas. This vessel is a rare opportunity to own a meticulously maintained legend. Kept in excellent condition by a dedicated owner, she combines the timeless elegance of the Riva shipyard with the reliability of modern mechanical standards

*Nico Stillitano*

## SPECIFICATIONS

<b>Dimensions</b>	17.98 x 4.91 x 1.55 (m)	<b>Builder</b>	Riva
<b>Built</b>	1992	<b>Cabins</b>	
<b>Material</b>	GRP	<b>Berths</b>	
<b>Engine(s)</b>	2 x MANN D2842LZE diesel	<b>Hp/Kw</b>	2 x 1,100.00 (hp), 809.60 (kw)
<b>Asking price</b>	€ 250.000 (VAT Paid)	<b>Lying</b>	Italy

## CONTACT

<b>Sales office</b>	De Valk Rome	<b>Telephone</b>	+39 06 65 81221
<b>Address</b>	c/o Nautilus Marina Srl, Via Monte Cadria, 127  00054 Fiumicino Roma  IT	<b>E-mail</b>	rome@devalk.nl

## DISCLAIMER

These particulars are given in good faith as supplied but cannot be guaranteed.



# RIVA 58 BAHAMAS

## GENERAL

Model	RIVA 58 BAHAMAS
Type	motor yacht
LOA (m)	17,98
Beam (m)	4,91
Draft (m)	1,55
Year built	1992
Builder	Riva
Country	Italy
Designer	Mauro Micheli
Hull material	GRP
Hull colour	white
Superstructure material	GRP
Deck material	GRP
Deck finish	non-skid moulded in
Window frame	stainless steel
Portholes	stainless steel
Radar arch	non collapsible
Fuel tank (litre)	7700
Level indicator (fuel tank)	yes
Freshwater tank (litre)	800
Level indicator (freshwater)	yes
Wheel steering	yes
Outside helm position	yes

## ACCOMMODATION

Crew cabin	yes
Crew berths	yes
Interior	mahogany
Floor	wood
Open cockpit	yes



# RIVA 58 BAHAMAS

Saloon	U-shaped with table
Air-conditioning	yes
Dinette	yes
Galley	Linear
Countertop	granite
Sink	stainless steel
Cooker	yes
Fridge	yes
Hot water system	220V + engine
Water pressure system	yes
Owners cabin	double bed
Wardrobe	hanging/drawers/shelves
Bathroom	shared
Toilet	shared
Toilet system	electric
Wash basin	at the toilet
Shower	shared
Guest cabin 1	twin single
Wardrobe	drawers and shelves
Bathroom	shared
Toilet	shared
Toilet system	electric
Wash basin	at the toilet
Shower	shared
Guest cabin 2	twin single
Bathroom (crew)	yes
Toilet (crew)	yes

## MACHINERY

No of engines	2
Make	MANN



Type	D2842LZE
HP	1100
kW	809.60
Fuel	diesel
Year installed	1992
Year of overhaul	2 new motor MANN in 2020
Drive	V-drive

## NAVIGATION

Compass	yes
Electric compass	yes
Multi control display	yes
Depth sounder	yes
Log	yes
VHF	yes
GPS	yes

## EQUIPMENT

Fixed windscreen	yes
Cockpit cushions	yes
Anchor	yes
Anchor chain	yes
Windlass	yes
Fenders	yes
Mooring lines	yes
TV	yes
Radio	yes
Cockpit speakers	yes
Speakers in salon	yes
Speakers in cabin	yes
Fire extinguisher	yes



## Extra info

2023 Refits & Maintenance • Replacement of gland packings. • Complete replacement of all batteries (new). • New battery wiring and cabling. • Overhaul of bathroom pumps, freshwater pump (autoclave), and air conditioning system. • Replacement of all freshwater system piping. • New bathroom discharge pumps

## Extra info

2022 Refits & Maintenance • Overhaul and replacement of high-pressure lines for the garage hatch and davit. • Overhaul of the hydraulic gangway. • New AISI-316 stainless steel exhaust fittings and piping. • New engine water and oil hoses. • Overhaul of the galvanic isolation system. • Fuel tank cleaning and replacement of Racor fuel filters. • Overhaul of the grey water tank. • New bilge pumps. • Refurbishment of soundproofing panels in the engine room. • Engine replacement (installed new, zero-hour factory-remanufactured engines). • Replacement of one starter motor and overhaul of the other. • Overhaul of alternators. • New seawater pumps, intercooler, and riser for the generator. • New upholstery for the cockpit, bow, and stern sunpads. • New complete canopy/bimini (top plus transparent side enclosures). • New TV SAT antenna. • New autopilot system. • Overhaul of the anchor windlass. • Refinishing of cockpit cabinetry. • New Fusion stereo system with subwoofer. • Interior/Exterior lights replaced with LEDs. • New Sony TVs installed in the dinette and owner's cabin. • New interior wooden flooring.



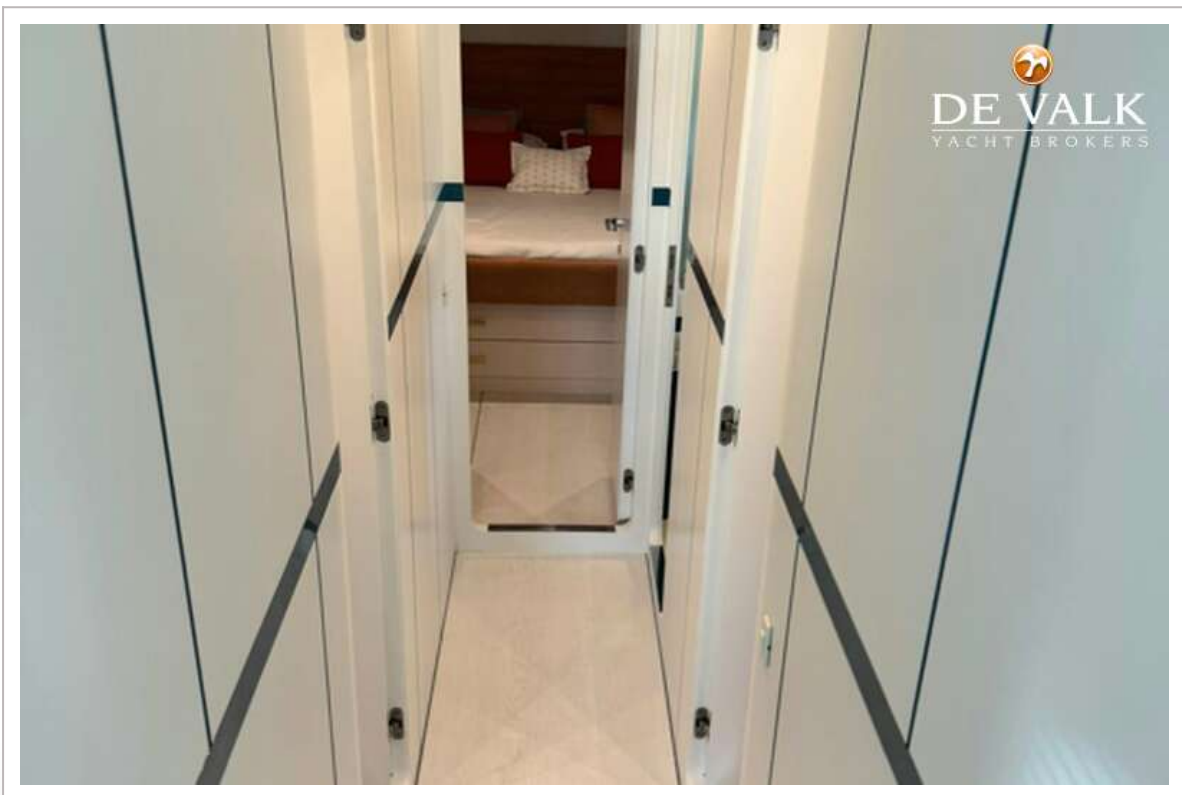
# RIVA 58 BAHAMAS



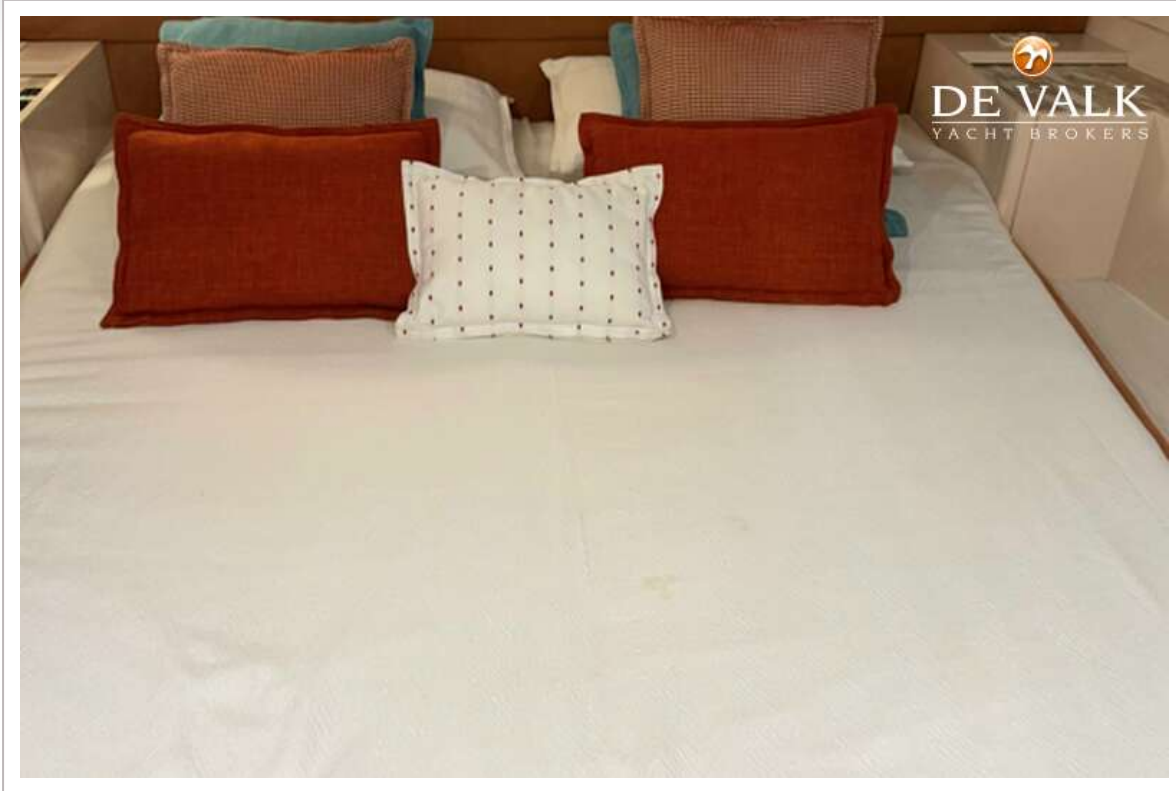
# RIVA 58 BAHAMAS



# RIVA 58 BAHAMAS



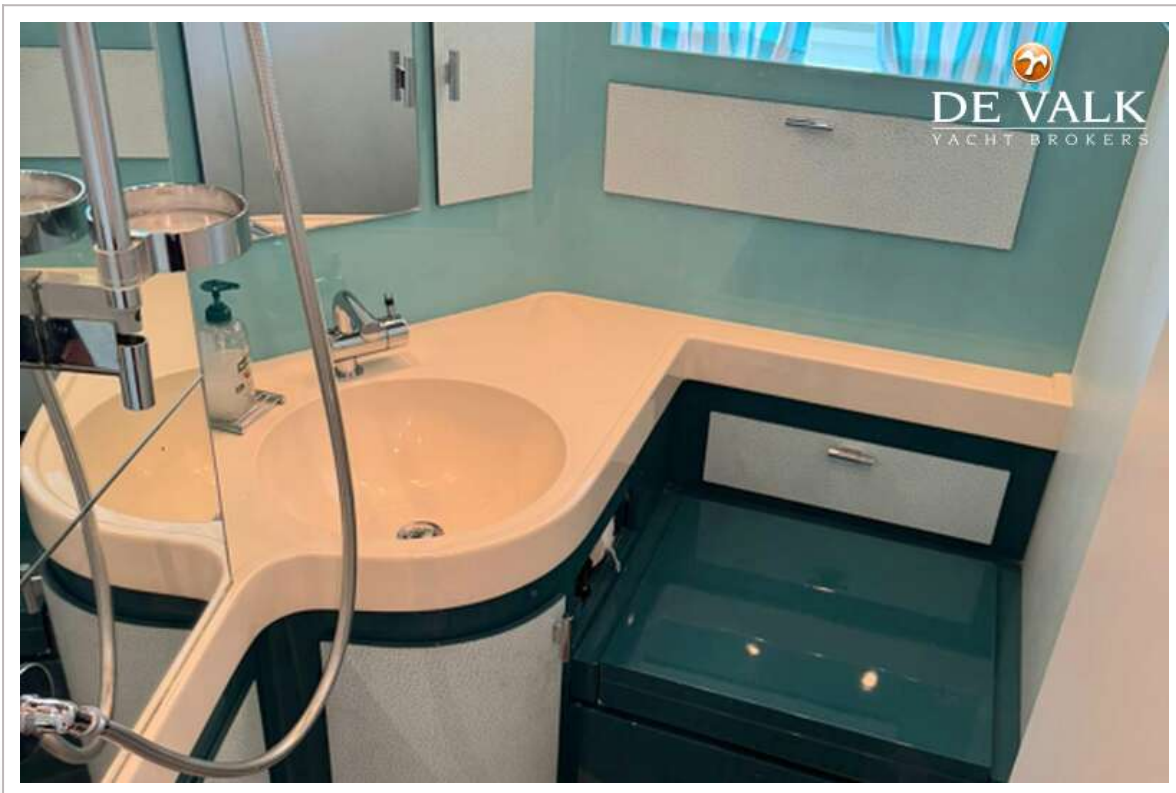
# RIVA 58 BAHAMAS



# RIVA 58 BAHAMAS



# RIVA 58 BAHAMAS





# RIVA 58 BAHAMAS

