



DE VALK  
YACHT BROKERS



HANSE 545



DE VALK  
YACHT BROKERS

## BROKER'S COMMENTS

Experience the perfect balance of style, speed, and comfort with this professionally maintained 2012 Hanse 545. Designed by Judel/Vrolijk, this 54-foot cruiser is renowned for its modern, open-plan interior, effortless sailing capabilities, and striking contemporary lines. Perfect for both extended family cruising and swift, comfortable offshore passages

*Diego Cerasi*

## SPECIFICATIONS

<b>Dimensions</b>	16.20 x 4.91 x 2.80 (m)	<b>Builder</b>	
<b>Built</b>	2012	<b>Cabins</b>	3
<b>Material</b>	GRP	<b>Berths</b>	6
<b>Engine(s)</b>	1 x Volvo D3 diesel	<b>Hp/Kw</b>	110.00 (hp), 80.96 (kw)
<b>Asking price</b>	€ 295.000 (VAT Paid)	<b>Lying</b>	at sales office

## CONTACT

<b>Sales office</b>	De Valk Palma	<b>Telephone</b>	+34 971 40 29 11
<b>Address</b>	Port. Cala Nova, Avda. Joan Miro, 327 07015 Palma de Mallorca ES	<b>E-mail</b>	palma@devalk.nl

## DISCLAIMER

These particulars are given in good faith as supplied but cannot be guaranteed.



## GENERAL

<b>Model</b>	HANSE 545
<b>Type</b>	sailing yacht
<b>LOA (m)</b>	16,20
<b>LWL (m)</b>	14,60
<b>Beam (m)</b>	4,91
<b>Draft (m)</b>	2,80
<b>Year built</b>	2012
<b>Designer</b>	Judel/Vrolijk
<b>Displacement (t)</b>	18,7
<b>CE norm</b>	A
<b>Hull material</b>	GRP

## ACCOMMODATION

<b>Cabins</b>	3
<b>Berths</b>	6

## MACHINERY

<b>No of engines</b>	1
<b>Make</b>	Volvo
<b>Type</b>	D3
<b>HP</b>	110
<b>kW</b>	80.96
<b>Fuel</b>	diesel
<b>Year installed</b>	2012



# HANSE 545



# HANSE 545



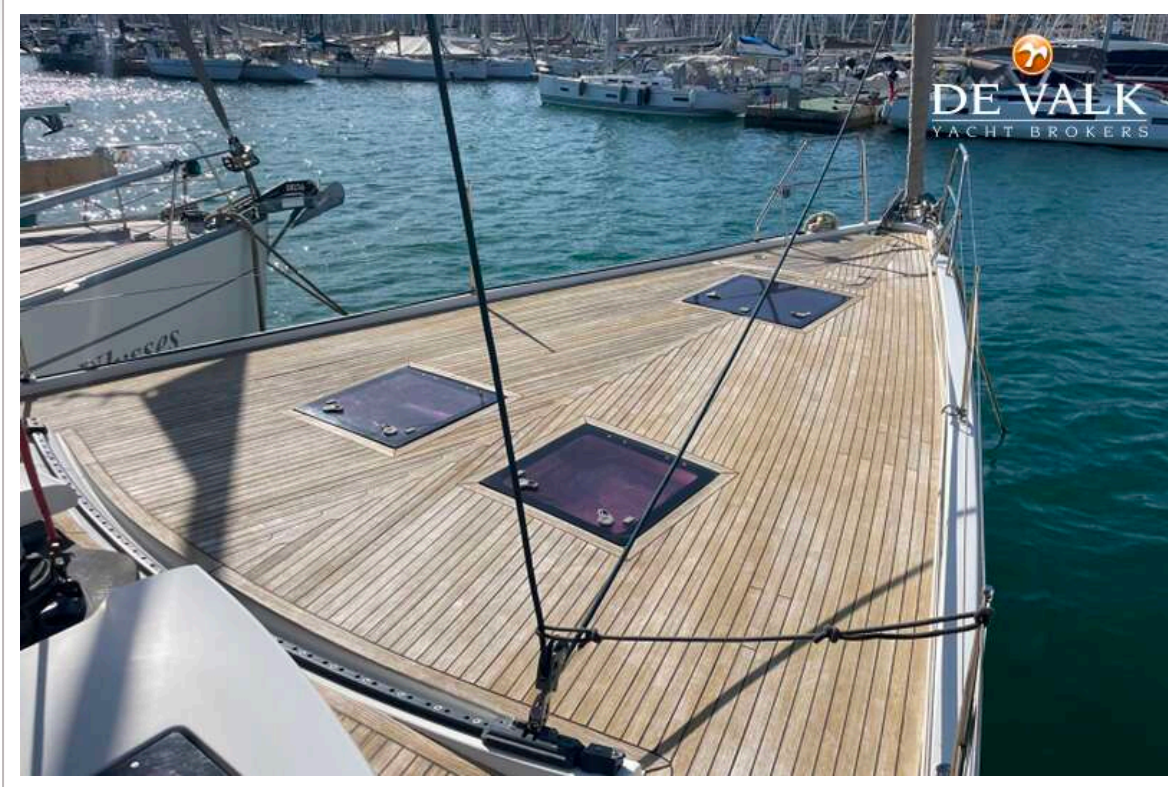
# HANSE 545



# HANSE 545



# HANSE 545



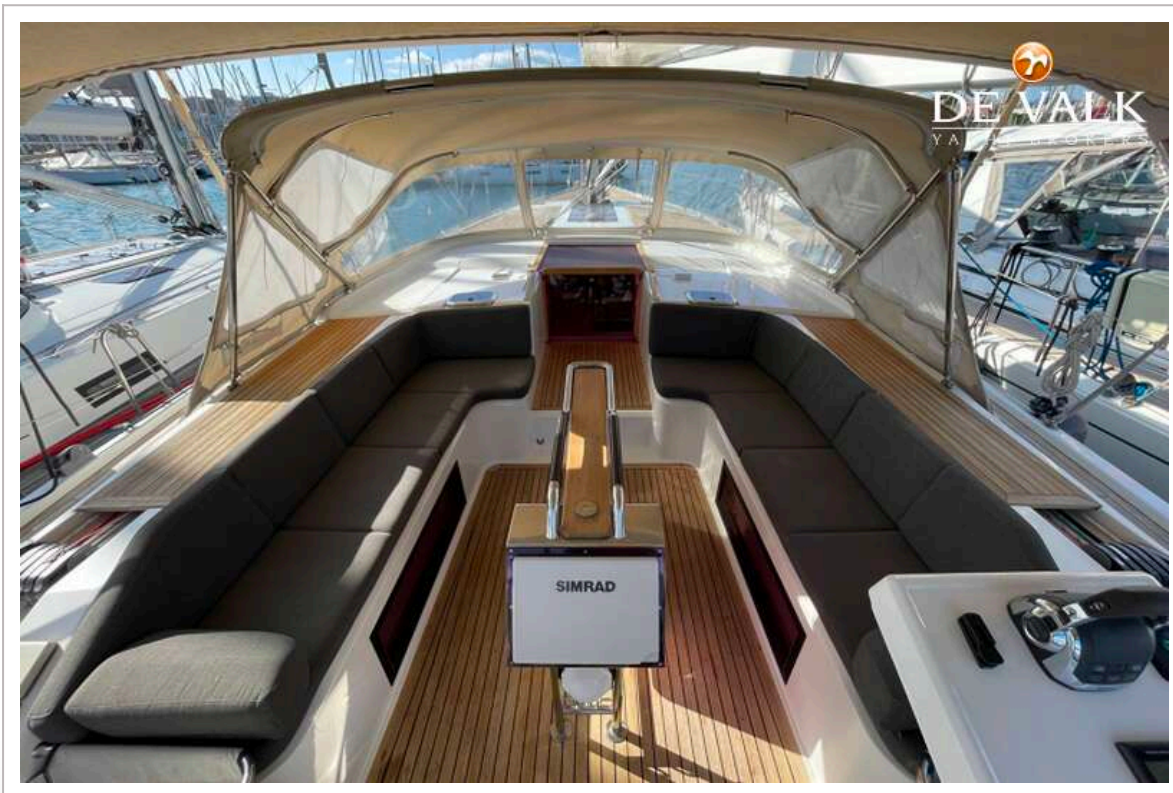
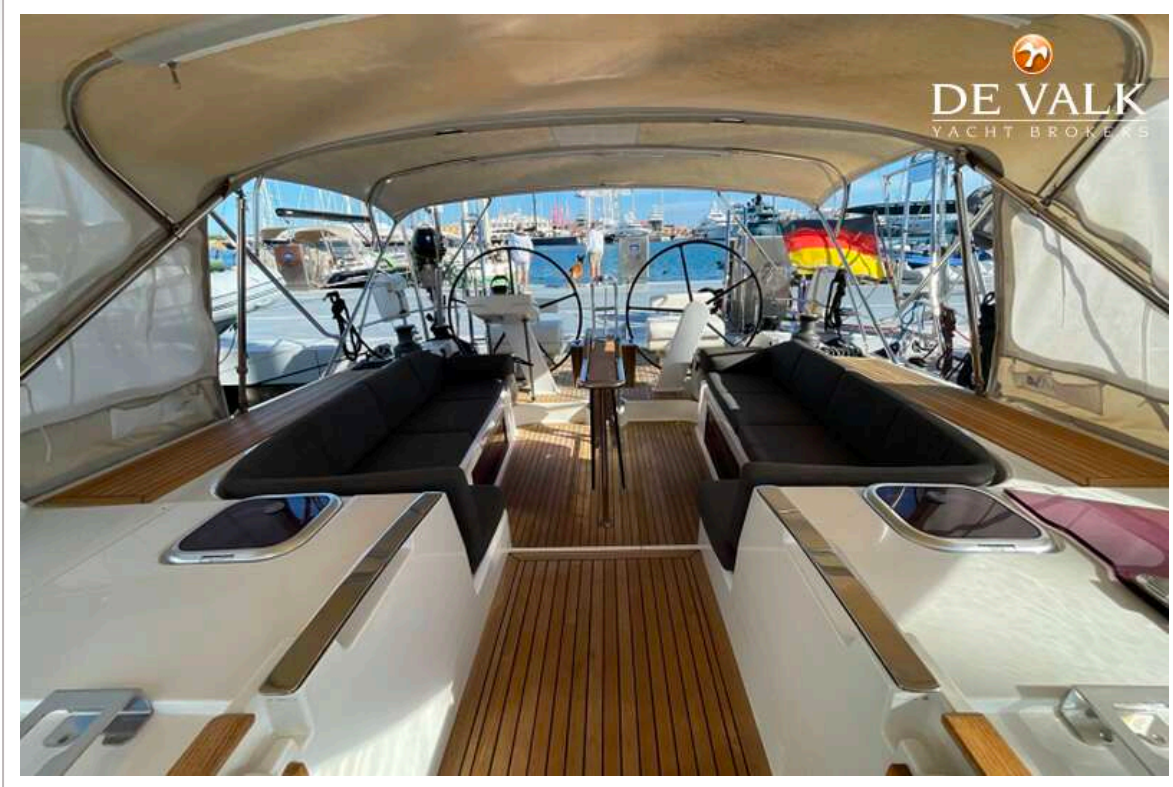
# HANSE 545



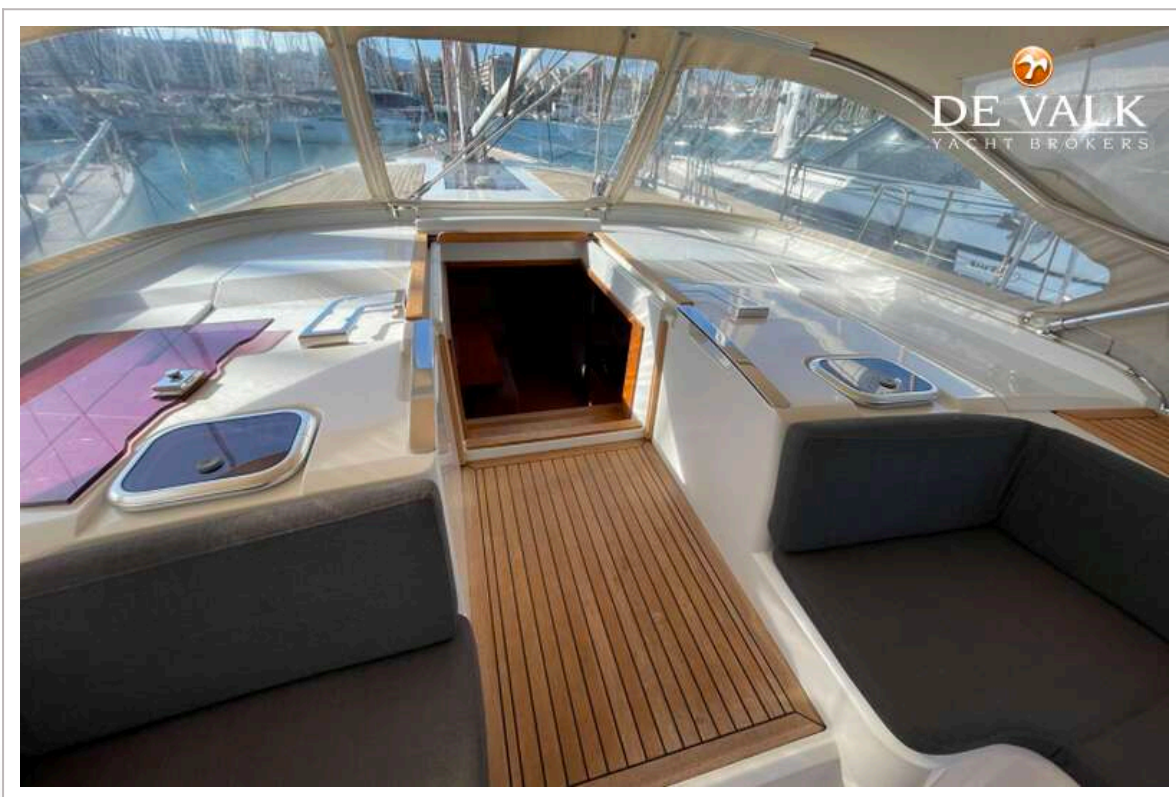
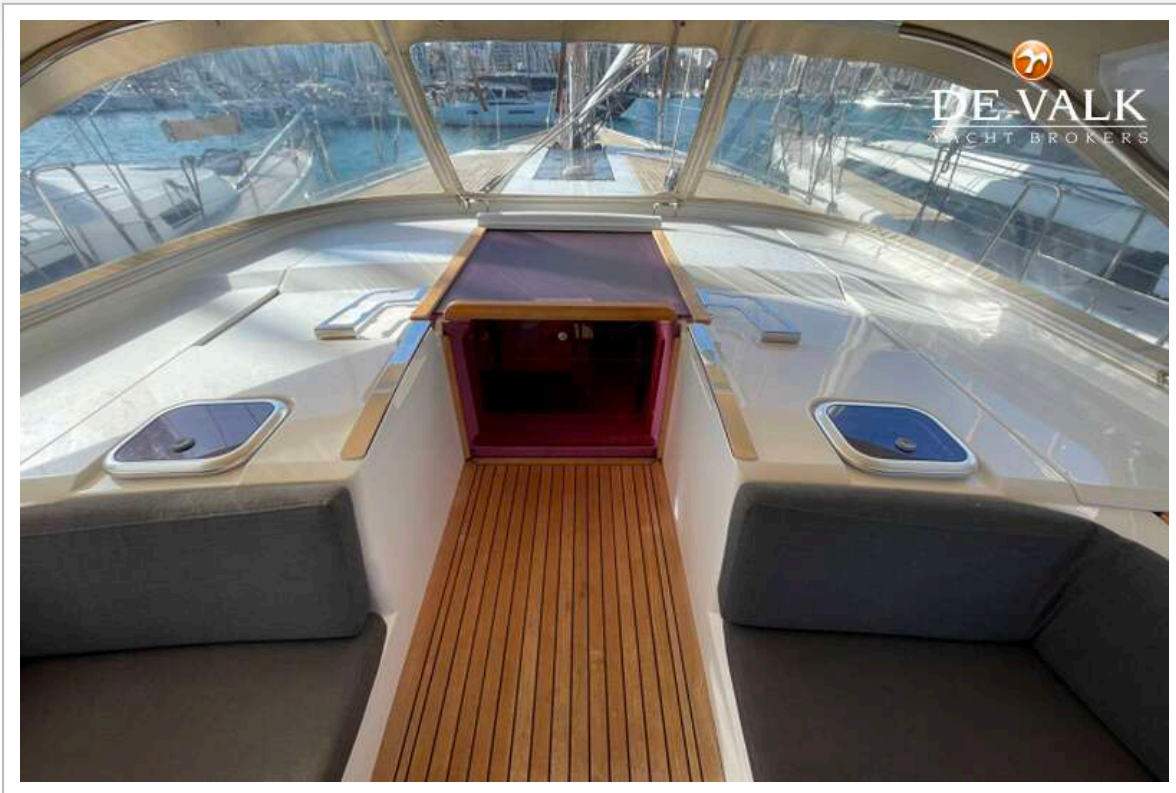
# HANSE 545



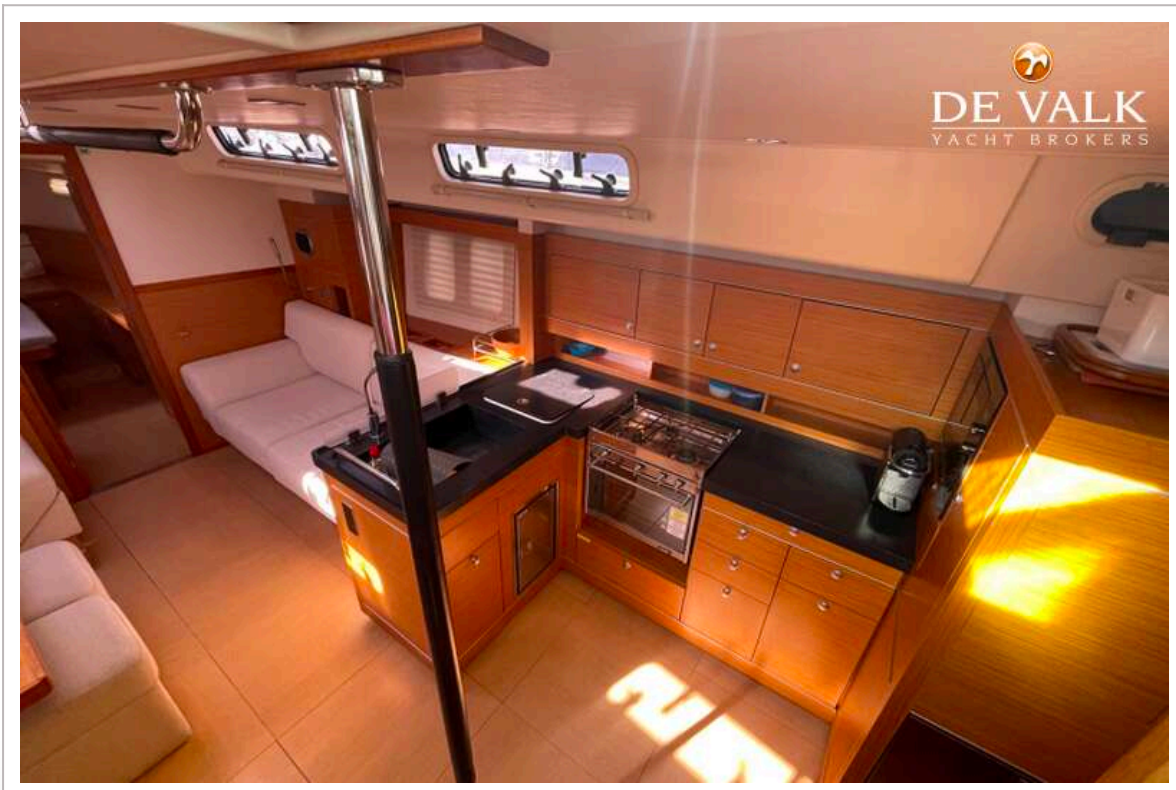
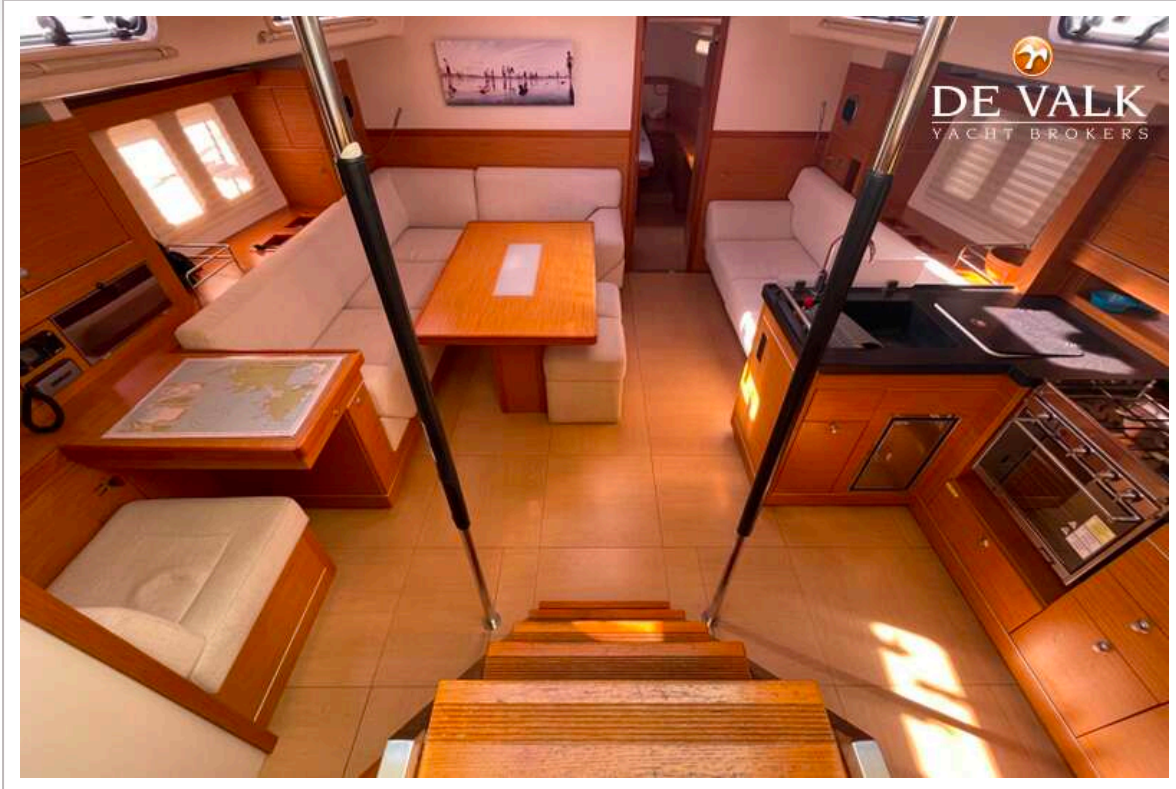
# HANSE 545



# HANSE 545



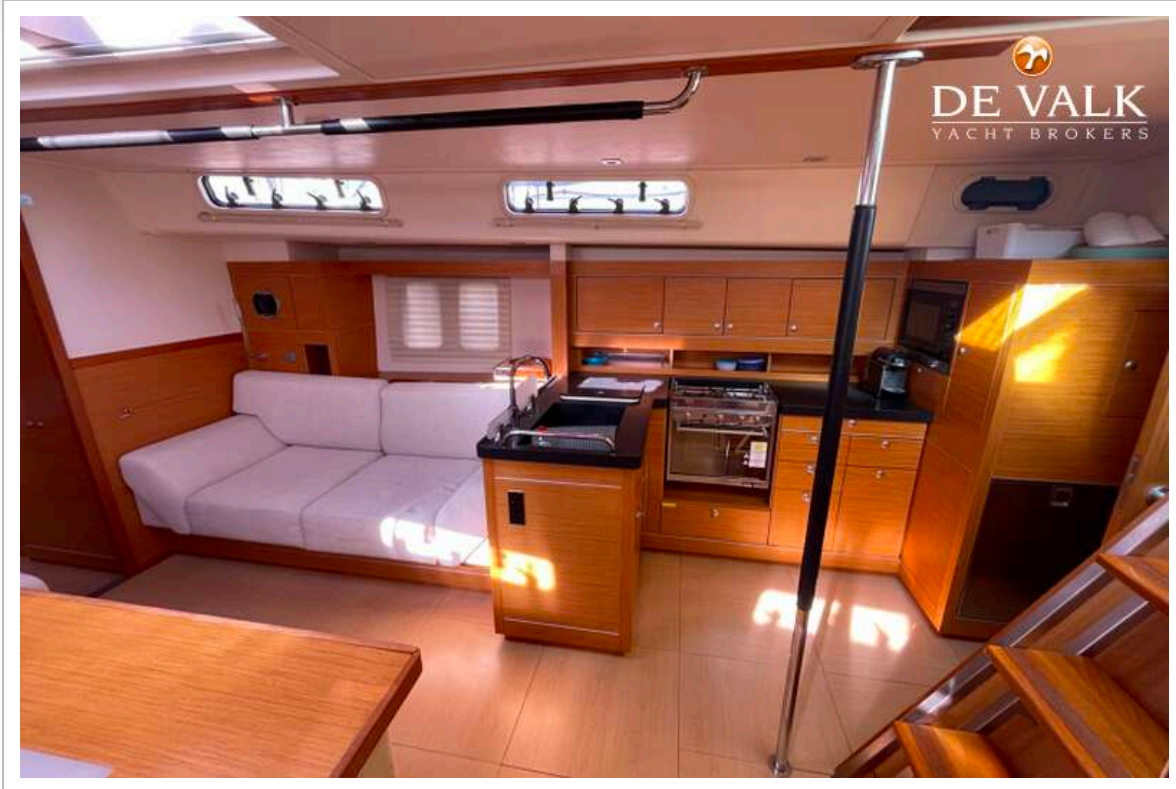
# HANSE 545



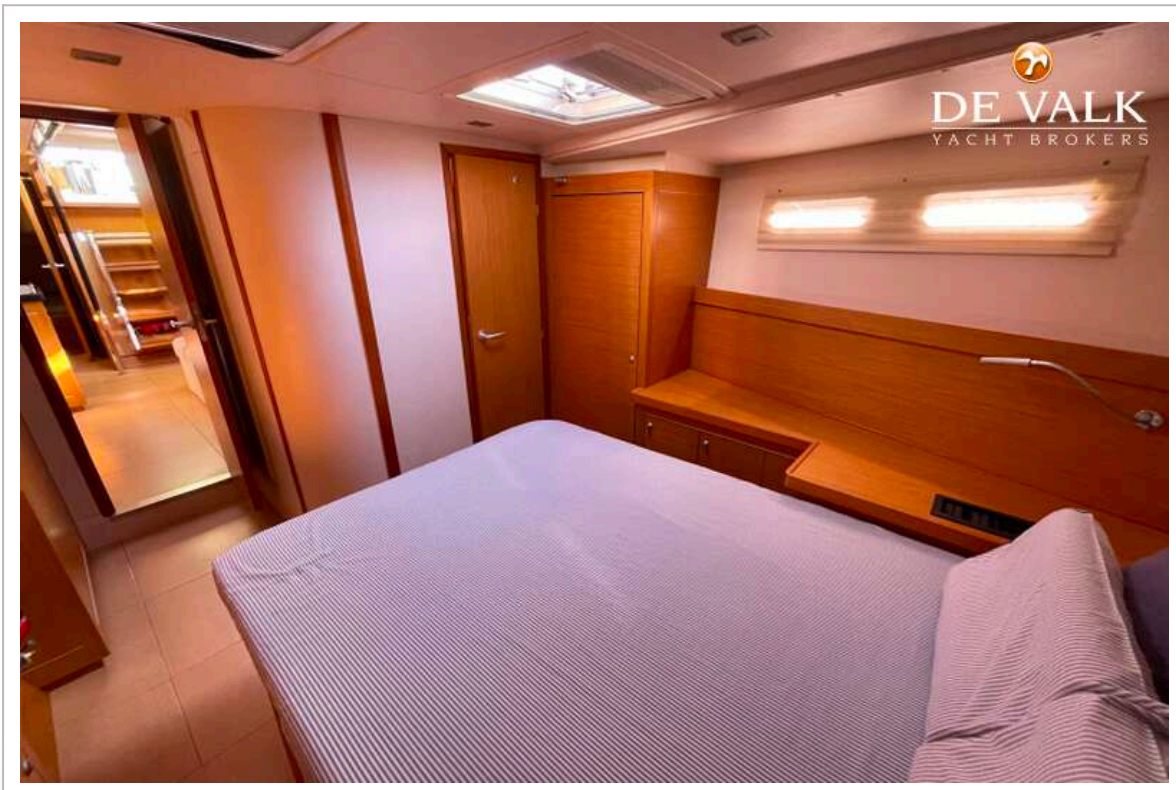
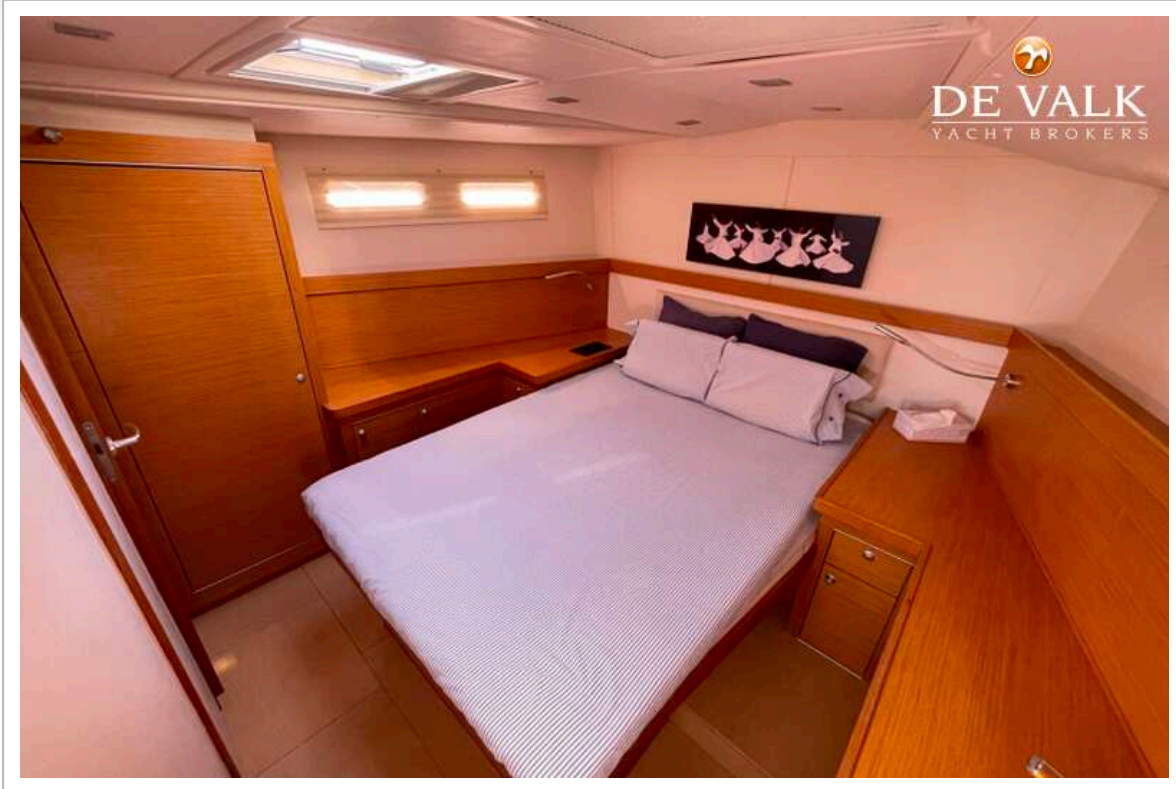
# HANSE 545



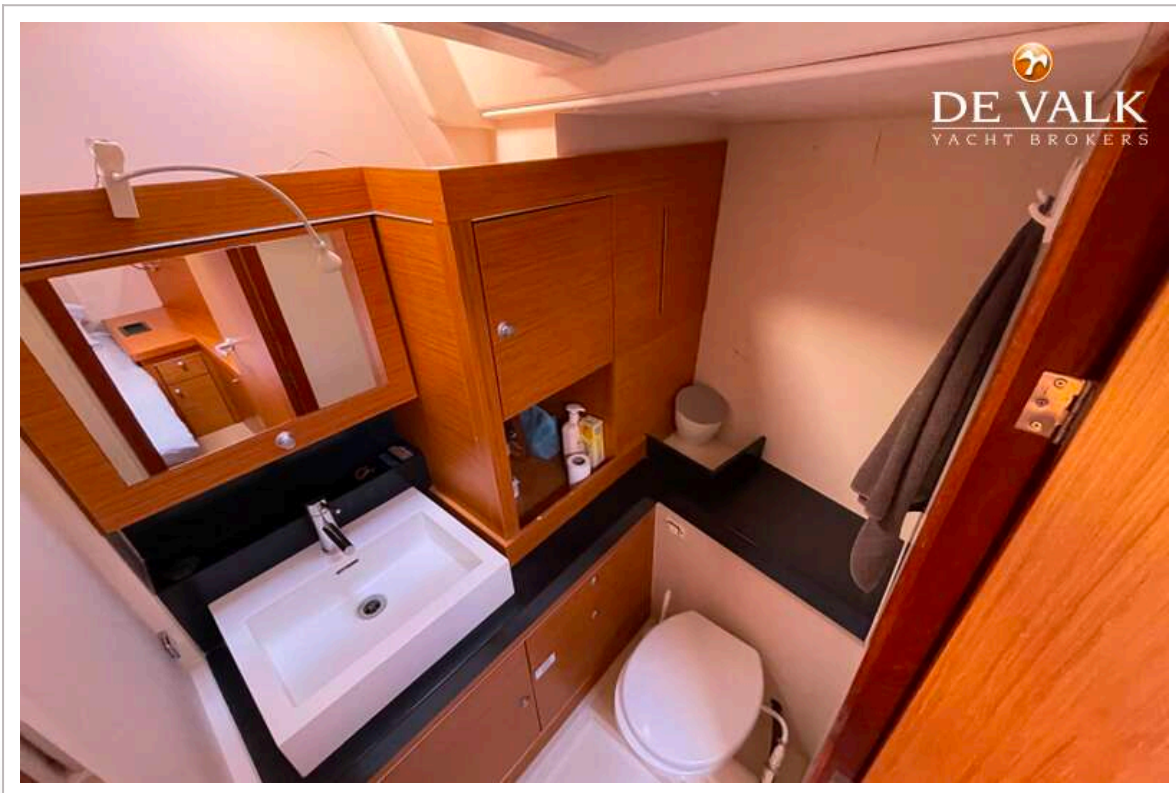
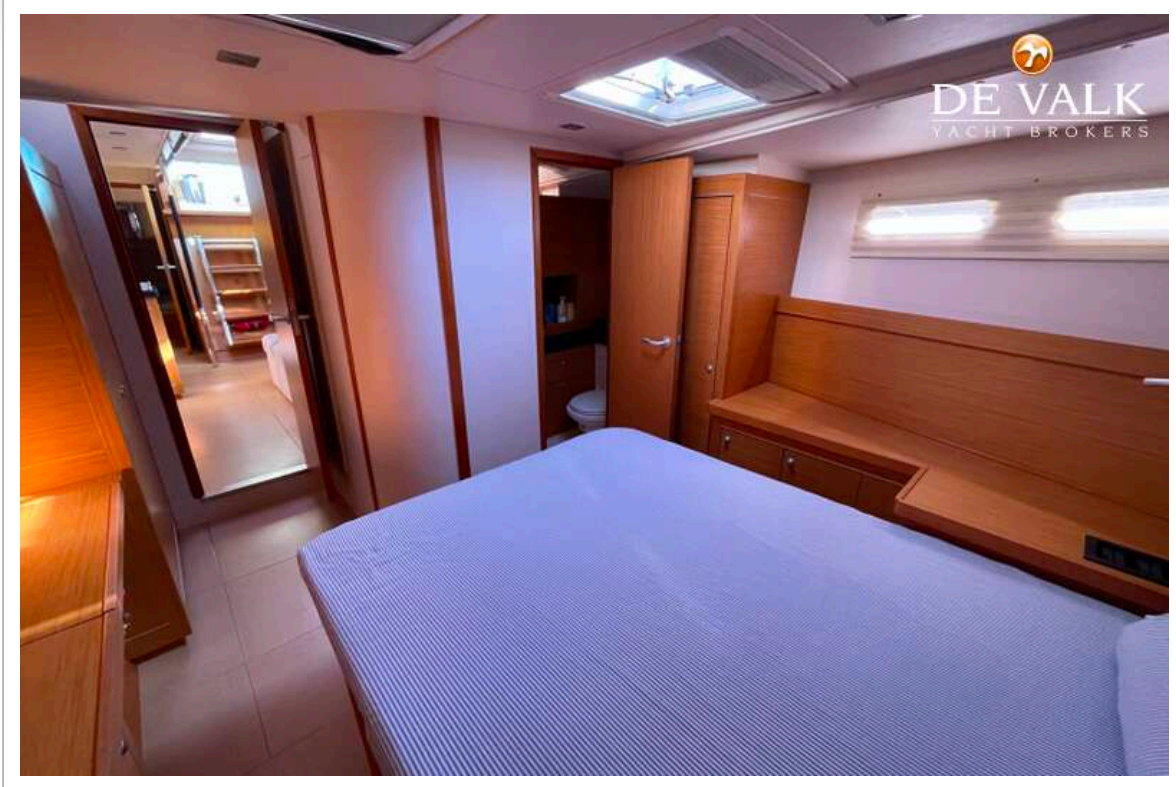
# HANSE 545



# HANSE 545



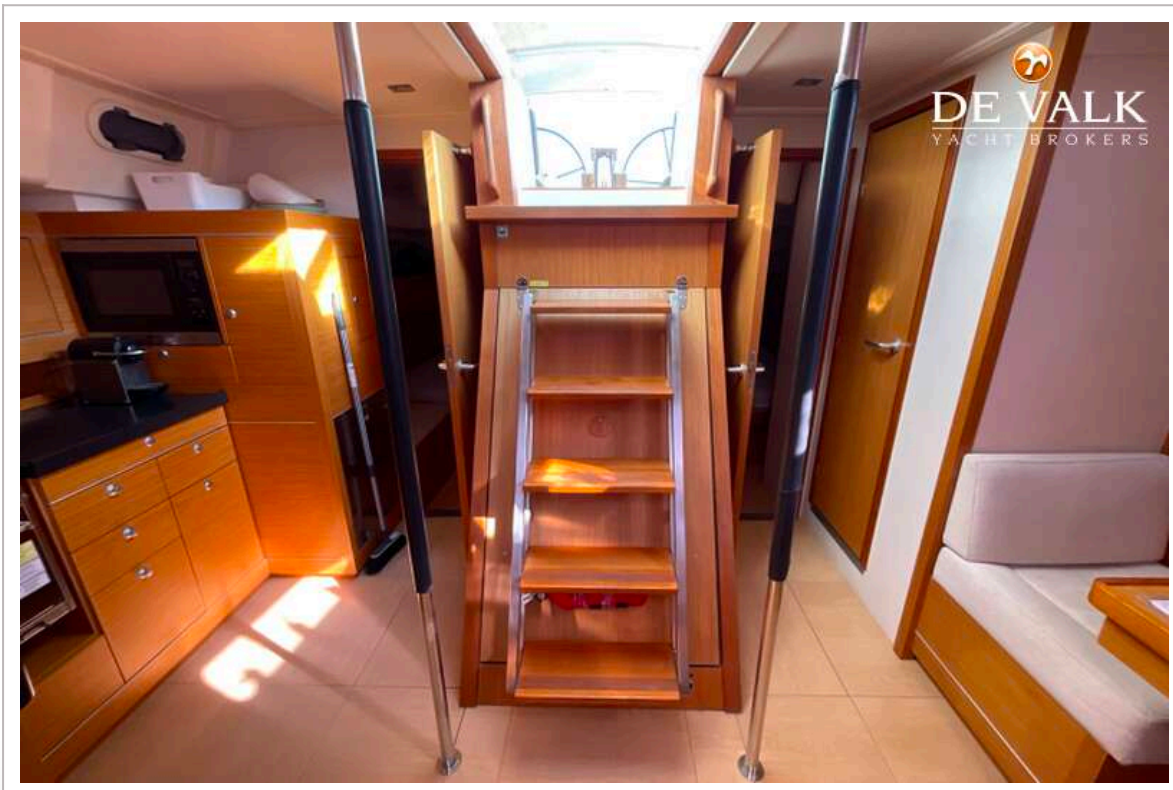
# HANSE 545



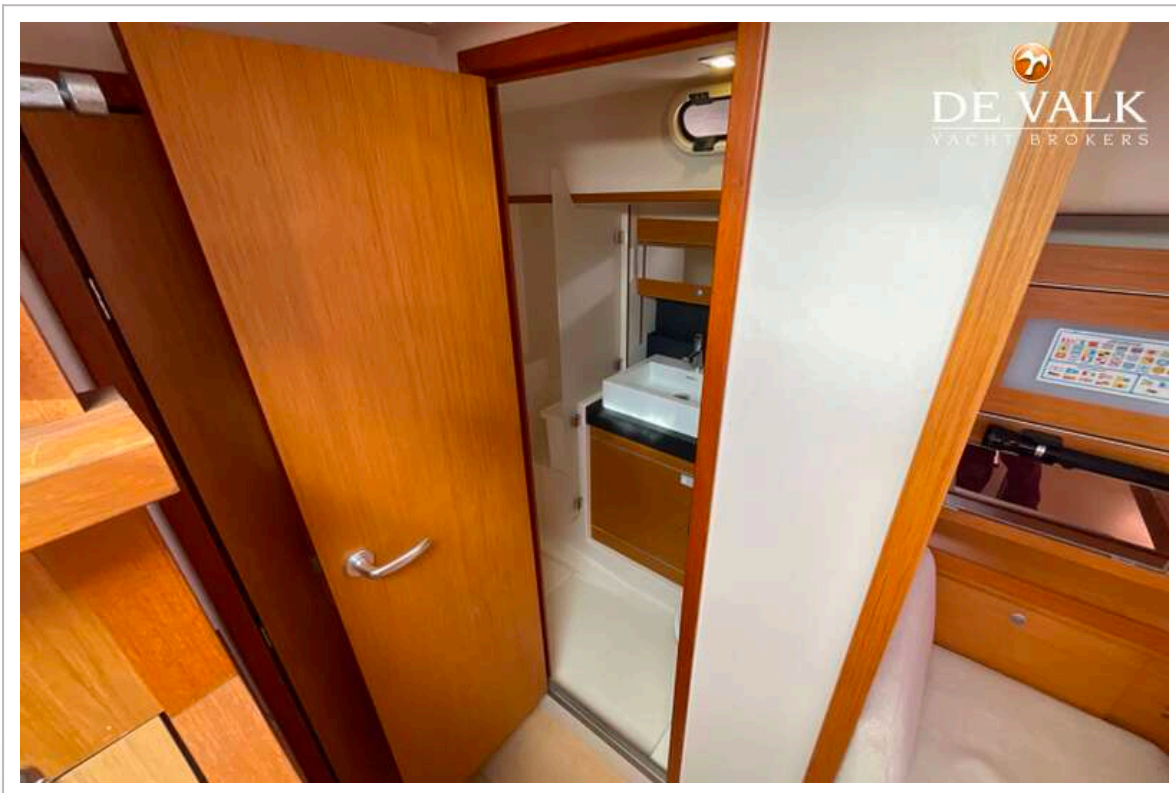
# HANSE 545



# HANSE 545



# HANSE 545



# HANSE 545

