



DE VALK
YACHT BROKERS



ELAN 40



DE VALK
YACHT BROKERS

ELAN 40

BROKER'S COMMENTS

Designed by renowned yacht designer Rob Humphreys, this 2003 Elan 40 is a rare opportunity to acquire a truly exceptional yacht. Having had just one careful owner since new, she has been meticulously maintained and thoughtfully upgraded throughout her life. Equipped for serious offshore sailing and worldwide cruising, she comes with an impressive inventory of extras, including a watermaker, solar panels, and numerous additional upgrades that make extended adventures comfortable and self-sufficient. This is not a yacht that has spent her life tied to the dock looking pretty, she has been loved.

Johan Nooitgedagt

SPECIFICATIONS

Dimensions	12.20 x 3.95 x 2.05 (m)	Builder	Elan Yachts
Built	2003	Cabins	2
Material	GRP	Berths	6
Engine(s)	1 x Volvo Penta 2040S diesel	Hp/Kw	40.00 (hp), 29.44 (kw)
Asking price	€ 79.000 (VAT Paid)	Lying	contact Hindeloopen

CONTACT

Sales office	De Valk Hindeloopen B.V.	Telephone	+31 514 52 40 00
Address	Oosterstrand 1 8713 JS Hindeloopen NL	E-mail	hindeloopen@devalk.nl

DISCLAIMER

These particulars are given in good faith as supplied but cannot be guaranteed.



GENERAL

Model	ELAN 40
Type	sailing yacht
LOA (m)	12,20
LWL (m)	10,24
Beam (m)	3,95
Draft (m)	2,05
Air draft (m)	18,60
Headroom (m)	2,00
Year built	2003
Launched	2004
Builder	Elan Yachts
Country	Slovenia
Designer	Rob Humphreys
Displacement (t)	7,2
Ballast (tonnes)	lead 2,5
CE norm	A
Hull material	GRP
Hull colour	blue
Hull shape	round-bilged
Keel type	fin keel with bulb
Superstructure material	GRP
Rubbing strake	stainless steel
Deck material	GRP
Deck finish	teak
Superstructure deck finish	teak
Cockpit deck finish	teak
Antifouling (year)	2026
Window frame	aluminium
Window material	polycarbonate
Deckhatch	yes



Fuel tank (litre)	stainless steel 150
Level indicator (fuel tank)	yes
Freshwater tank (litre)	stainless steel 100 + 160
Level indicator (freshwater)	yes
Blackwater tank (litre)	polyethylene 25
Blackwater tank extraction	deck extraction + uw line
Wheel steering	cable steering
Emergency tiller	yes
More info on hull	Hull is painted 2007

ACCOMMODATION

Cabins	2
Berths	6
Interior	mahogany
Floor	woodprint
Open cockpit	yes
Saloon	yes
Headroom saloon (m)	2.0
Heating	diesel ducted hot air Needs to be serviced
Chart table	yes
Galley	yes
Countertop	corian
Sink	stainless steel
Cooker	calor gas 3 burner ronol
Oven	yes
Fridge	Isotherm
Hot water system	220V + engine
Water pressure system	electrical
Manual and/or foot pump	Foot pump, outside water
Crockery	yes
Owners cabin	v-bed Front



Bed length (m)	2,2
Wardrobe	hanging and shelves
Bathroom	shared
Toilet	shared
Toilet system	manual
Wash basin	at the toilet
Shower	shared
Guest cabin 1	double bed Rear
Bed length (m)	2,0
Wardrobe	hanging and shelves

MACHINERY

No of engines	1
Make	Volvo Penta
Type	2040S
HP	40
kW	29.44
Fuel	diesel
Maximum speed (kn)	7
Cruising speed (kn)	6
Consumption (l/hr)	3,5
Range (nm)	350
Engine cooling system	freshwater heat exchanger
Drive	sail-drive
Saildrive seal	2015
Engine controls	bowden cable
Gearbox	mechanical
Exhaust	watercooled
Propeller type	folding
Manual bilge pump	2x
Electric bilge pump	yes



Start battery	2023 1x 105 Ah
Service battery	2023 3x 105 Ah
Battery charger/inverter	Victron 12/3000/120
Wind generator	Silend wind
Solar panel	2x 105w & 2x 160w
Shorepower	with cable
Watermaker	Needs to be serviced 50liter / hour

NAVIGATION

Compass	yes
Depth sounder	Raymarine ST60
Log	Raymarine ST60
Repeater	Raymarine ST60 needs to be replaced
VHF	2x 1x Skanti, 1x Icom MC-411
VHF handheld	America only
Autopilot	Raymarine ST 6000
Wind vane steering install.	Windpilot
Rudder angle indicator	On autopilot
Radar	Needs to be serviced
GPS	Raymarine RN300
Plotter/GPS	Raymarine A serie
Navtex	Furuno NX-300
Electronic chart(s)	yes
AIS transceiver	Raymarine 650 Class B
Transmitter	ICOM SSB
EPIRB	GME
Navigation lights	2025 Top light LED

EQUIPMENT

Sprayhood	yes
Sprayhood with grab rail	yes



Dodger	Rain cover
Winter cover	3 parts hardly used
Window cover	Sun shades
Cockpit cushions	yes
Cockpit table	yes
Bathing platform	yes
Boarding ladder	stainless steel
Deck shower	yes
Anchor	Rocna 2021 25kg
Anchor chain	45m 10mm
Anchor 2	Fortress
Windlass	electrical Lofrans
Deck wash	yes
Sea railing	wire Dynema
Grab rail (superstructure)	stainless steel
Pushpit	yes
Pulpit	yes
Life raft (pers)	container 6
Last life raft survey	Needs to be serviced
Lifebuoy	yes
Danbuoy	yes
Radar reflector	yes
Fenders	yes
Mooring lines	yes
Spare parts	yes
Satellite	Iridium Go
Radio	Needs to be serviced
Cockpit speakers	yes
Speakers in salon	yes
Clock - barometer	yes
Fire extinguisher	Needs to be serviced



RIGGING

Rigging	sloop-cutter
Standing rigging	Rod 2015
Brand mast	Z-Spar
Material mast	aluminium
Spreaders	3 pair
Keel stepped mast	yes
Mainsail	2016 Uk de Vries
Mainsail cover	yes
Battcars	yes
Fully battened mainsail	Upper 2 only
Cutterstay	Removable
Jib II	2010 Uk de Vries
High aspect	2020 Doyle Sails
Genoa I	2017 Doyle Sails
Genoa furler	yes
Genoa cover	yes
Gennaker	2015 UK de Vries
Staysail	yes
Removable innerforestay	yes
Stormjib	2010 Uk de Vries
Reefing System	quick-one-line-reefing
Backstay adjuster	tackle 2026
Boomvang	gasspring
Secondary sheet winch	2x Harken ST40
Genoa sheetwinches	2x Harken ST53
Halyard winches	2x Harken ST48
Spinnaker winch	2x Harken ST48
Spi-pole	carbon With cover
Gennaker pole	aluminium
Isolated backstay	yes





ELAN 40









ELAN 40



ELAN 40



ELAN 40



ELAN 40



ELAN 40



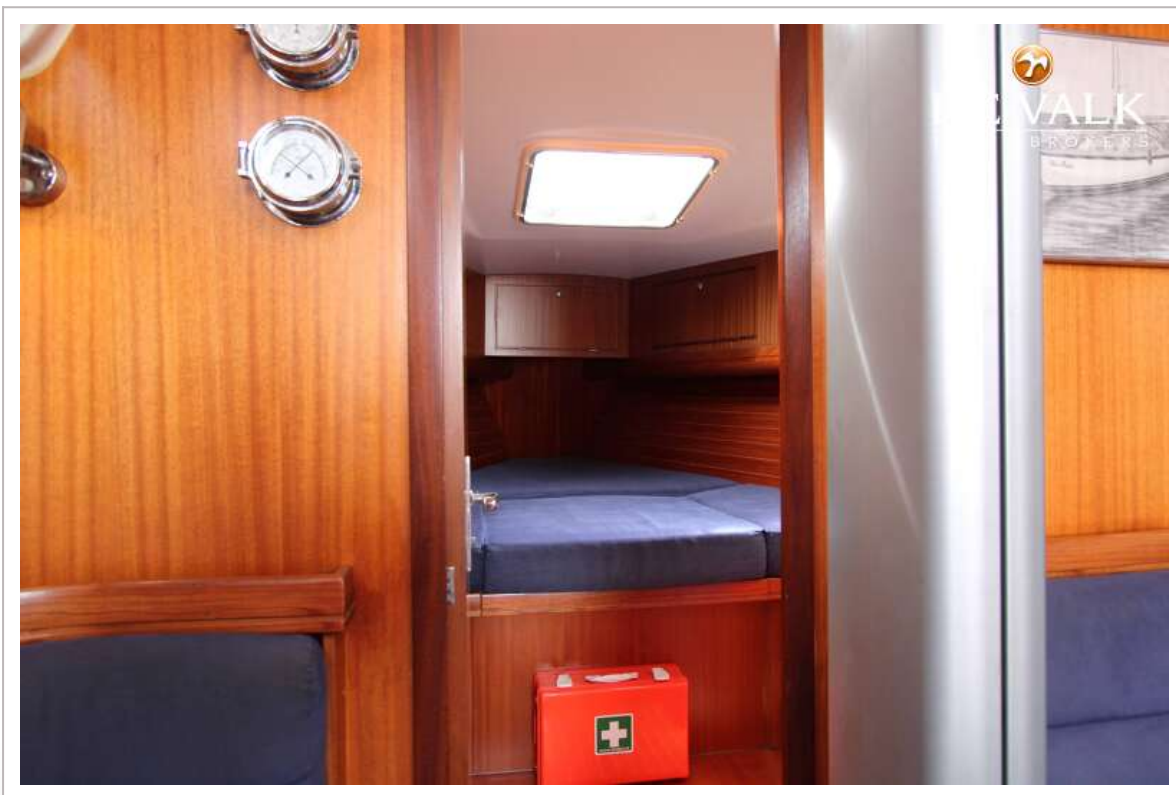
ELAN 40



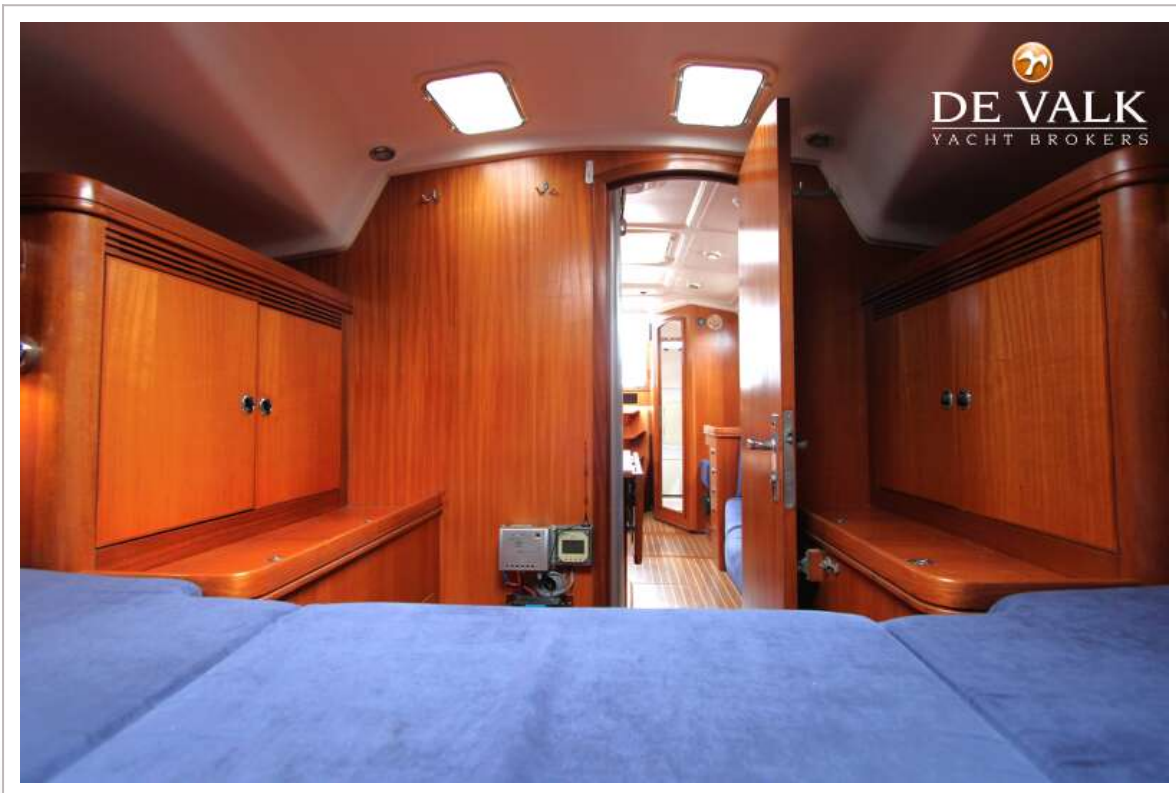
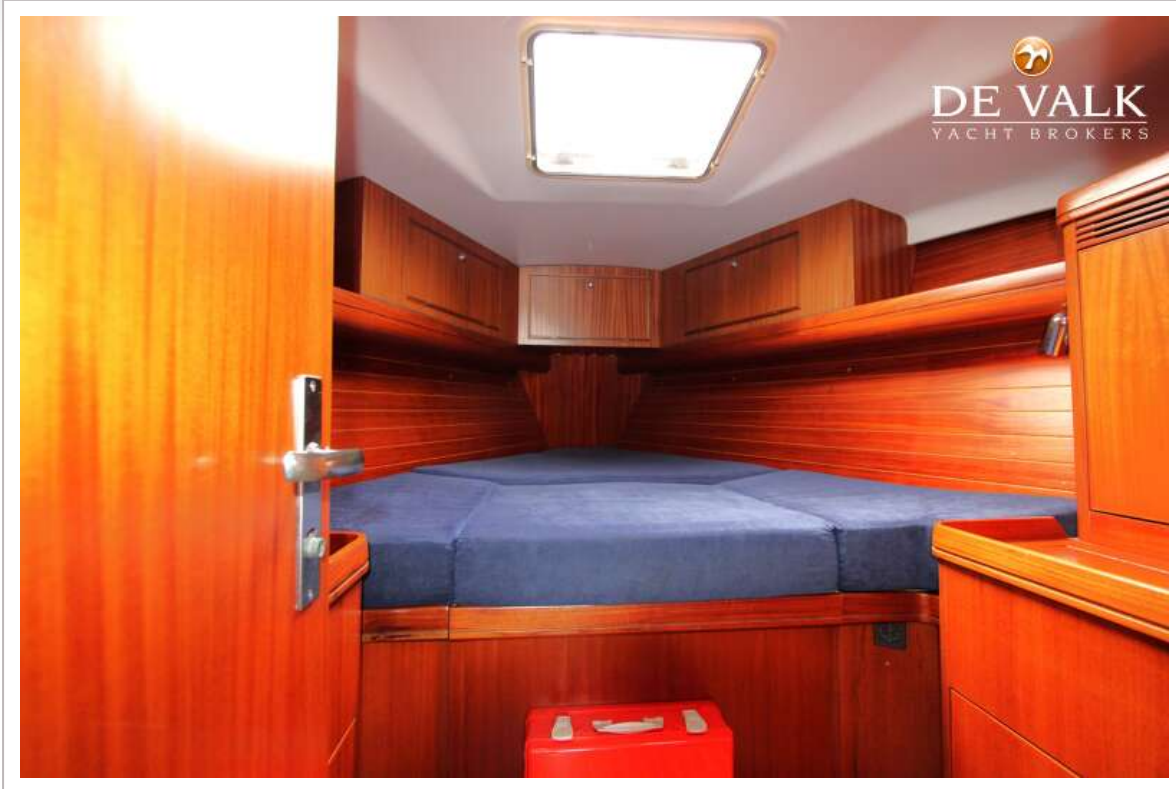
ELAN 40



ELAN 40



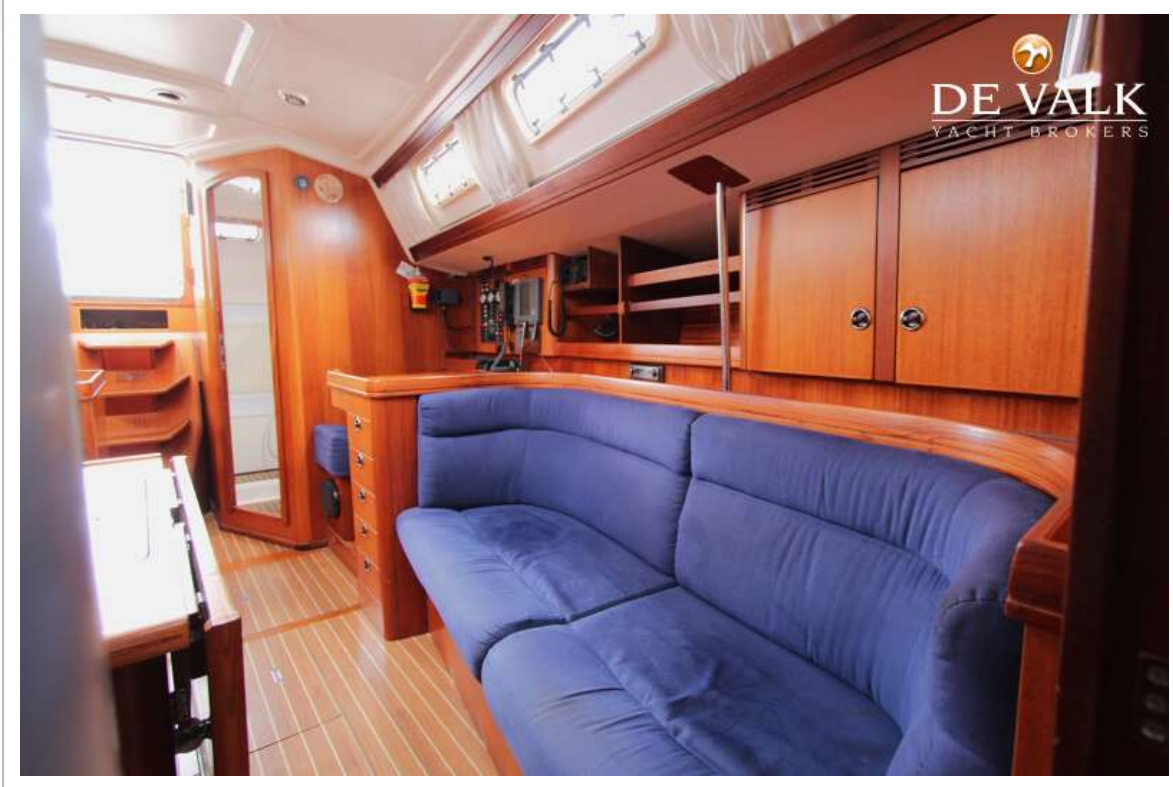
ELAN 40



ELAN 40



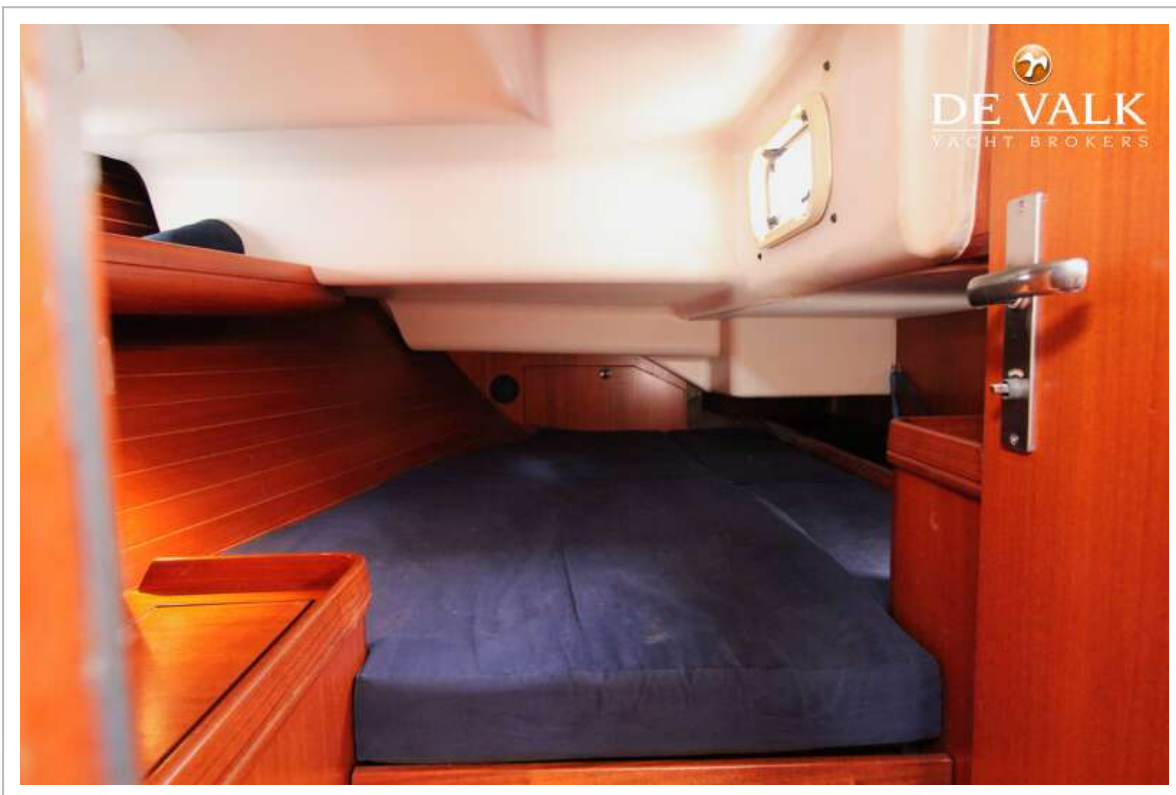
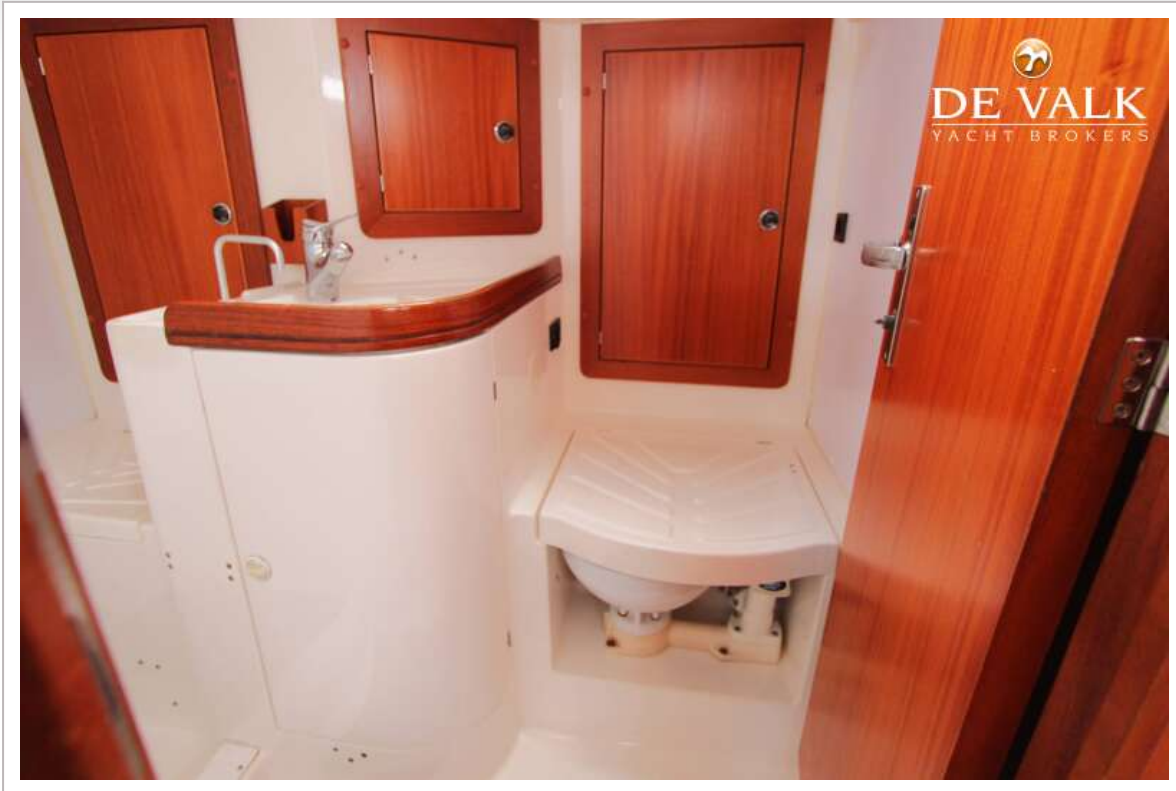
ELAN 40



ELAN 40



ELAN 40



ELAN 40

