



DE VALK  
YACHT BROKERS



NAJAD 570



DE VALK  
YACHT BROKERS

## BROKER'S COMMENTS

"Friya" represents a particularly fine and well-equipped example of the Najad 570, clearly standing out for her level of specification and overall coherence. A true bluewater cruiser, combining excellent build quality with a modern hull, "Friya" benefits from a notably complete setup, reflecting an experienced ownership and a yacht properly prepared for serious offshore cruising. In my opinion, she represents a compelling opportunity for a knowledgeable buyer seeking a reliable and ready-to-go cruising yacht in this segment.

*Nico Stillitano*

## SPECIFICATIONS

<b>Dimensions</b>	17.50 x 5.05 x 2.70 (m)	<b>Builder</b>	Najad Yachts
<b>Built</b>	2007	<b>Cabins</b>	3
<b>Material</b>	GRP	<b>Berths</b>	8
<b>Engine(s)</b>	1 x Volvo Penta D4 - 180 diesel	<b>Hp/Kw</b>	180.00 (hp), 132.48 (kw)
<b>Asking price</b>	€ 520.000 (VAT )	<b>Lying</b>	Italy

## CONTACT

<b>Sales office</b>	De Valk Rome	<b>Telephone</b>	+39 06 65 81221
<b>Address</b>	c/o Nautilus Marina Srl, Via Monte Cadria, 127  00054 Fiumicino Roma  IT	<b>E-mail</b>	rome@devalk.nl

## DISCLAIMER

These particulars are given in good faith as supplied but cannot be guaranteed.



## GENERAL

<b>Model</b>	NAJAD 570
<b>Type</b>	sailing yacht
<b>LOA (m)</b>	17,50
<b>LWL (m)</b>	16,55
<b>Beam (m)</b>	5,05
<b>Draft (m)</b>	2,70
<b>Year built</b>	2007
<b>Builder</b>	Najad Yachts
<b>Country</b>	Sweden
<b>Designer</b>	Judel/Vrolijk & Co
<b>Displacement (t)</b>	28
<b>Ballast (tonnes)</b>	lead 9,2
<b>CE norm</b>	A
<b>Hull material</b>	GRP
<b>Hull colour</b>	white White
<b>Keel type</b>	bulb keel
<b>Deck material</b>	GRP
<b>Deck finish</b>	teak
<b>Cockpit deck finish</b>	teak
<b>Antifouling (year)</b>	2025
<b>Deckhatch</b>	9
<b>Fuel tank (litre)</b>	stainless steel 900
<b>Level indicator (fuel tank)</b>	yes
<b>Freshwater tank (litre)</b>	stainless steel 1300
<b>Level indicator (freshwater)</b>	yes
<b>Blackwater tank (litre)</b>	stainless steel 2 x 90
<b>Level indicator (blackwater)</b>	yes
<b>Blackwater tank extraction</b>	deck extraction
<b>Level indicator (greywater)</b>	yes
<b>Wheel steering</b>	hydraulic 2 steering



## ACCOMMODATION

Cabins	3
Berths	8
Layout	yes
Floor	parquet
Deck saloon	yes
Saloon	yes
Chart table	yes
Aft Cabin	2
Galley	yes
Sink	Double
Cooker	yes
Oven	yes
Extractor	yes
Gas alarm	yes
Microwave	yes
Fridge	yes
Freezer	yes
Hot water system	yes
Water pressure system	yes
Kettle	yes
Coffee maker	yes
Owners cabin	double bed
Wardrobe	yes
Bathroom	yes
Toilet	yes
Toilet system	electric
Wash basin	yes
Shower	yes
Guest cabin 1	double bed + single bed
Wardrobe	yes



<b>Bathroom</b>	separate
<b>Toilet</b>	separate
<b>Toilet system</b>	electric
<b>Wash basin</b>	in the bathroom
<b>Shower</b>	shared
<b>Guest cabin 2</b>	double bed + single bed
<b>Wardrobe</b>	yes

## MACHINERY

<b>No of engines</b>	1
<b>Make</b>	Volvo Penta
<b>Type</b>	D4 - 180
<b>HP</b>	180
<b>kW</b>	132.48
<b>Fuel</b>	diesel
<b>Maximum speed (kn)</b>	12
<b>Cruising speed (kn)</b>	10
<b>Engine hours</b>	3200
<b>Engine cooling system</b>	freshwater heat exchanger
<b>Shaft seal</b>	Volvo
<b>Bowthruster</b>	electric
<b>Propeller type</b>	folding BROMPTON
<b>Propeller blades</b>	4 blades
<b>Propeller shaft material</b>	stainless steel Inox 45 mm
<b>Shaft lubrication</b>	water
<b>Manual bilge pump</b>	yes
<b>Electric bilge pump</b>	yes
<b>Bilge alarm</b>	yes
<b>Electrical installation</b>	24 \ 220 volts
<b>Generator</b>	Mastervolt whisper ultra 6 kw
<b>Running hours generator</b>	500



Battery charger	yes
Inverter	yes
Battery charger/inverter	yes
Shorepower	yes

## NAVIGATION

Compass	yes
Multi control display	Raymarine HD7
Depth sounder	Ray ST 60
Log	Ray ST60
Windset	Ray ST 60
Repeater	Ray ST 290
VHF	yes
VHF handheld	Ray 240E
Autopilot	Raymarine
Rudder angle indicator	yes
Radar	yes
GPS	yes
Plotter	yes
Plotter/GPS	Raymarine Axiom Pro 12"
Radar/plotter	Axiom Pro 12"
AIS transceiver	yes
EPIRB	Kannad SPORTPRO GPS EPIRB
Navigation lights	yes

## EQUIPMENT

Sprayhood	yes
Cockpit cushions	yes
Cockpit table	yes
Bow ladder	yes
Gangway	yes



Deck shower	yes
Anchor	Delta Inox 45 kg
Anchor chain	galvanized steel chain 60 mt
Windlass	electrical LOFRANS' PROJECT 1500 W
Dinghy	rigid inflatable Highfield RIB 3,20 (Year 2023)
Outboard	Honda 20 HP (overhaul 2026)
Outboard support	yes
Davits	stainless steel
Davits controls	manual
Pushpit	yes
Pulpit	yes
TV	yes
Radio-cd player	yes
Speakers in salon	yes
Fire extinguisher	yes

## RIGGING

Rigging	sloop
Standing rigging	Rod
Brand mast	Seldén
Material mast	aluminium
Spreaders	3 spreaders
Keel stepped mast	yes
Mainsail	Hydraulic Furling UK 96 m2 year 2002
Jib	SELDEN Hydraulic furling UK 92 m2 Year 2002
Genoa furler	SELDEN HYDRAULIC
Code Zero	UK 160 m2 year 2002
Removable innerforestay	yes
Backstay adjuster	HOLMATRO hydraulic
Boomvang	HOLMATRO hydraulic
Primary sheet winch	2 x Andersen 525 ST 2 speed electric



**Genoa sheetwinches**

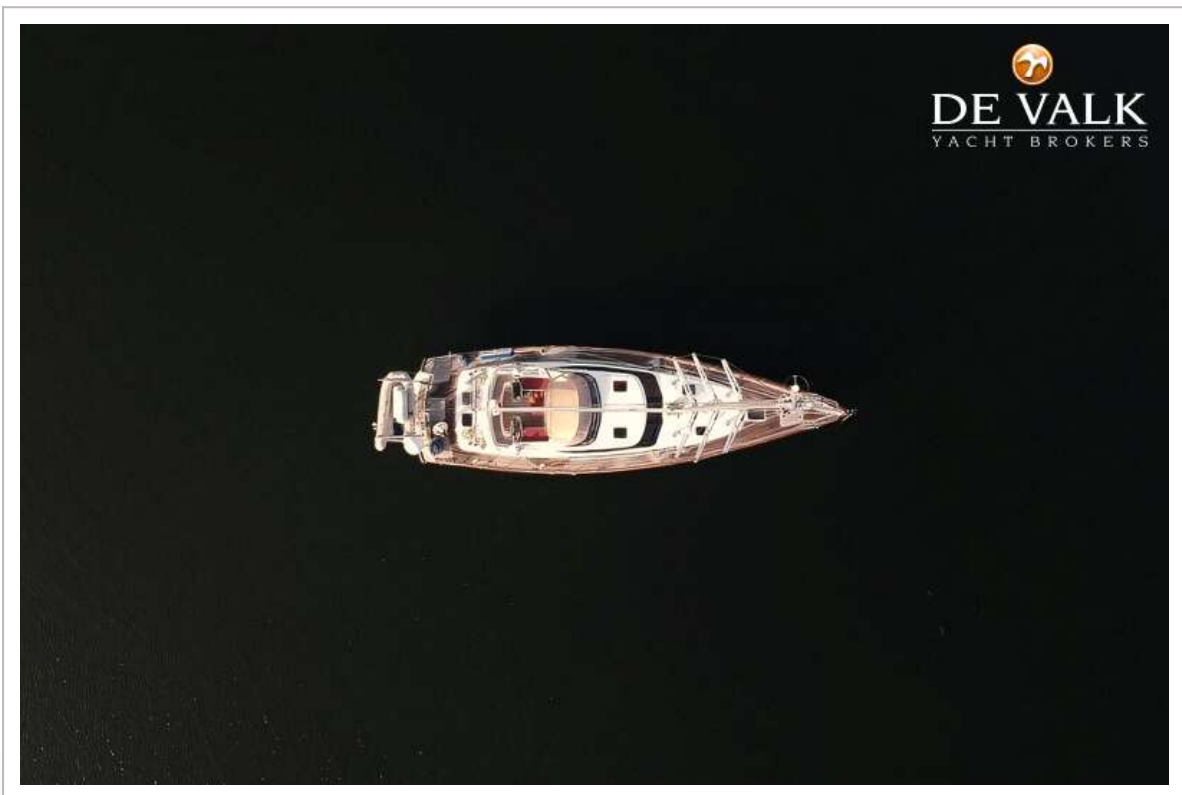
2 x Andersen 74 ST 2 speed electric

**Halyard winches**

2x Andersen 46 ST manual



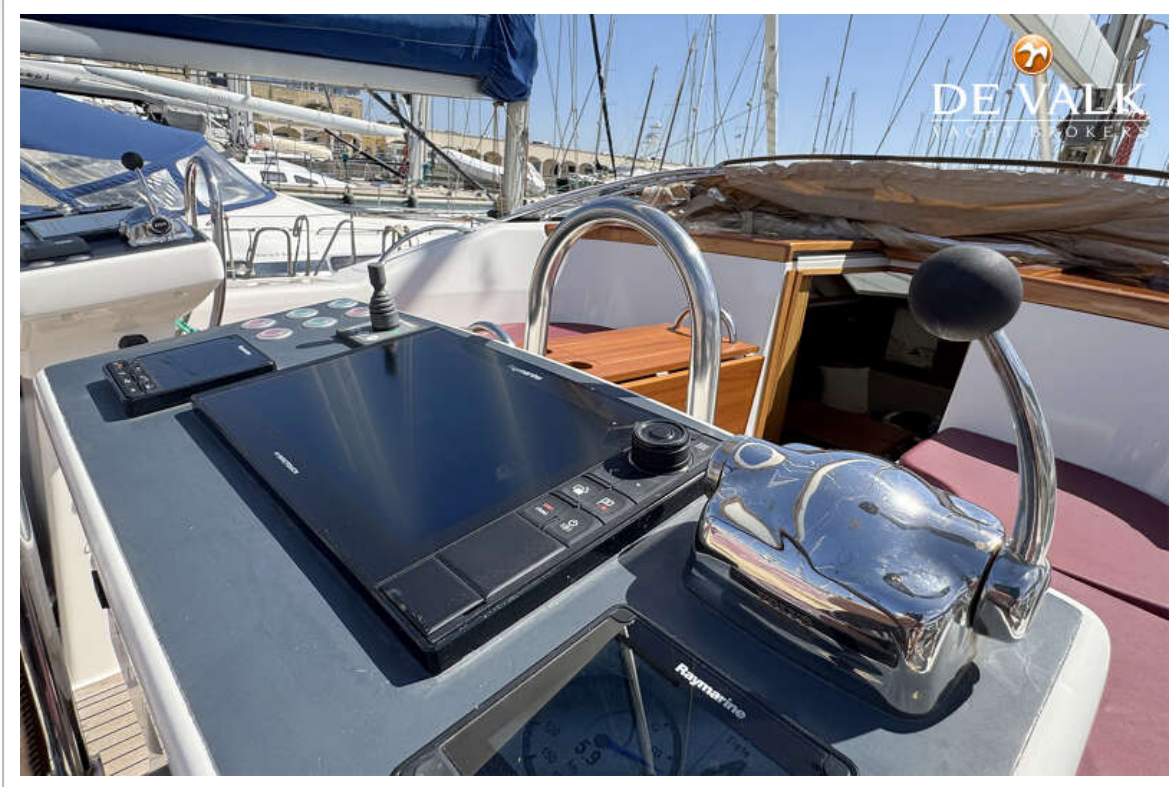
# NAJAD 570



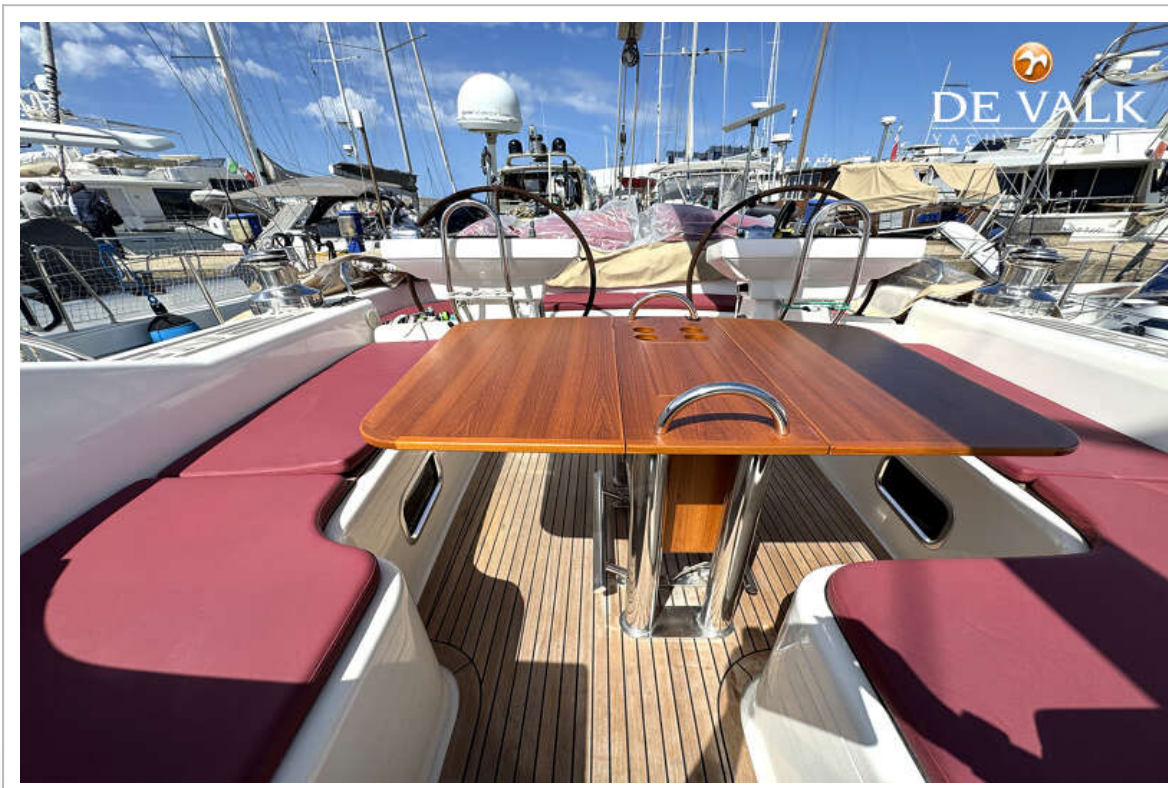
# NAJAD 570



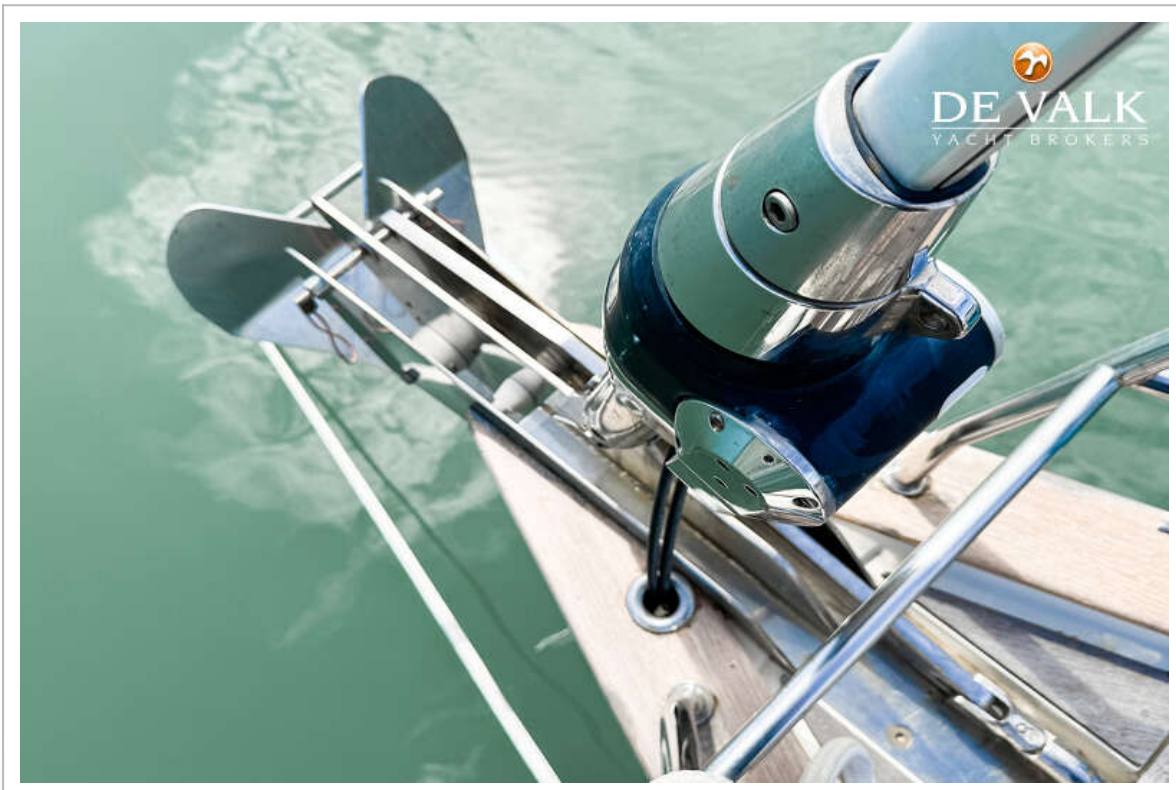
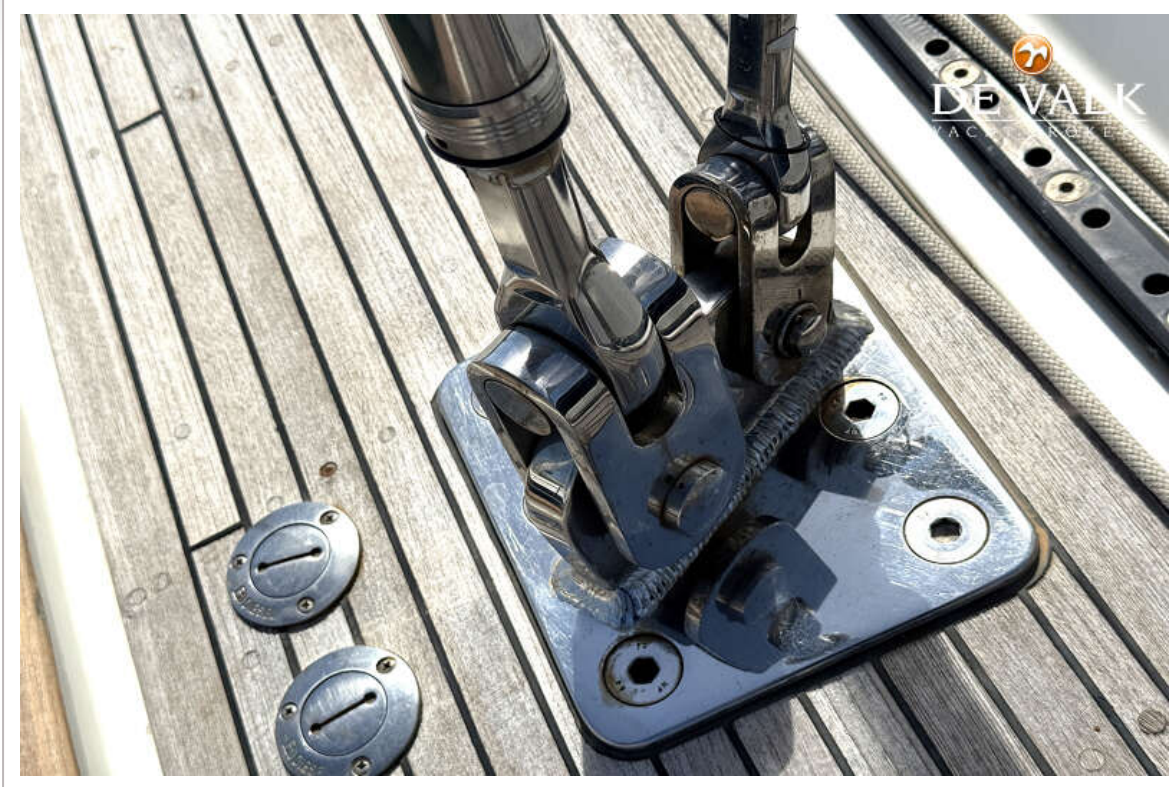
# NAJAD 570



# NAJAD 570



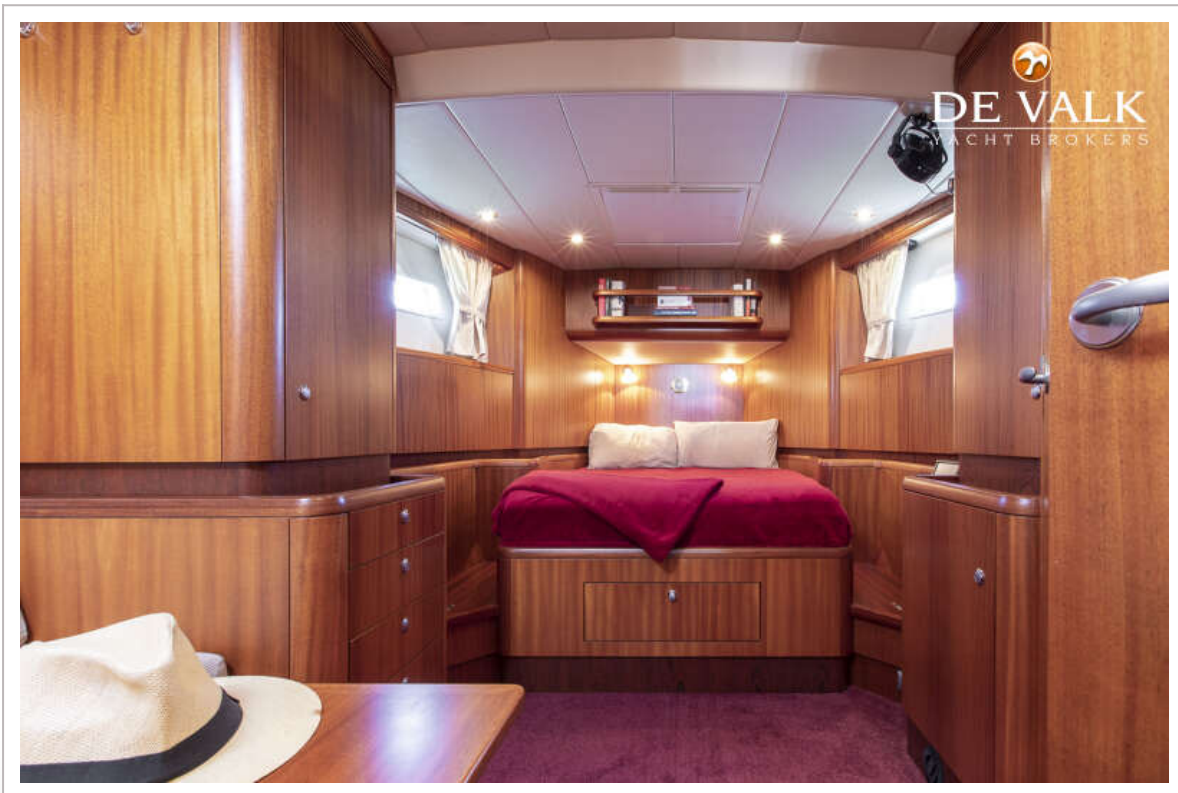
# NAJAD 570



# NAJAD 570



# NAJAD 570



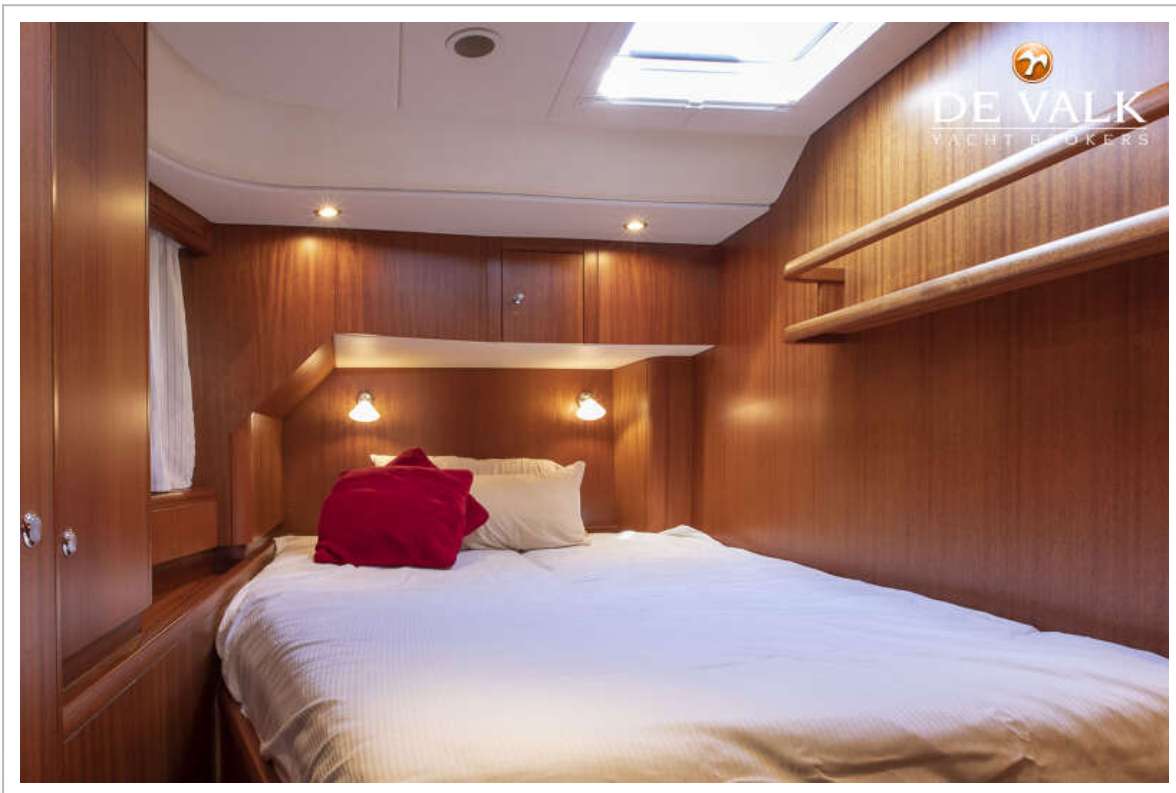
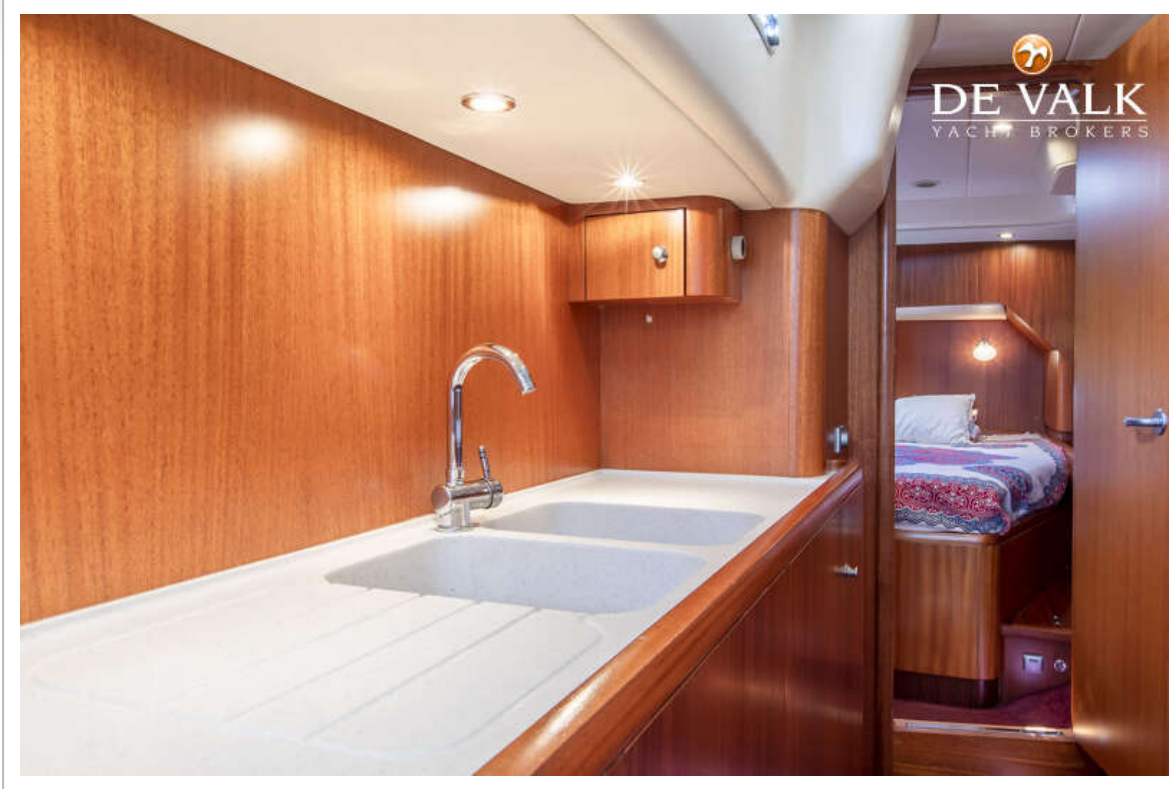
# NAJAD 570



# NAJAD 570



# NAJAD 570



# NAJAD 570



# NAJAD 570



# NAJAD 570

