



DE VALK  
YACHT BROKERS



## SANLORENZO 62



DE VALK  
YACHT BROKERS

## BROKER'S COMMENTS

Sanlorenzo motoryachts are icons of Italian design and shipbuilding. MICHELANGELO II. is one timeless piece of yachting now offered exclusively by DeValk Hamburg. This yacht offers luxurious living quality for 6 persons. You are looking for an affordable entry into luxury yachting or you are already fan of Sanlorenzos? Here is your opportunity. Located near Valencia, Spain.

*Jürgen Jacobs*

## SPECIFICATIONS

<b>Dimensions</b>	19.75 x 5.20 x 1.20 (m)	<b>Builder</b>	San Lorenzo
<b>Built</b>	1999	<b>Cabins</b>	3
<b>Material</b>	GRP	<b>Berths</b>	6
<b>Engine(s)</b>	2 x MAN D2842LE402 diesel	<b>Hp/Kw</b>	2 x 1,100.00 (hp), 809.60 (kw)
<b>Asking price</b>	€ 375.000 (VAT Paid)	<b>Lying</b>	contact Hamburg

## CONTACT

<b>Sales office</b>	De Valk Hamburg	<b>Telephone</b>	+49 40 46 000 999
<b>Address</b>	Domstraße 11 20095 Hamburg DE	<b>E-mail</b>	hamburg@devalk.nl

## DISCLAIMER

These particulars are given in good faith as supplied but cannot be guaranteed.



## GENERAL

<b>Model</b>	SANLORENZO 62
<b>Type</b>	motor yacht
<b>LOA (m)</b>	19,75
<b>Beam (m)</b>	5,20
<b>Draft (m)</b>	1,20
<b>Headroom (m)</b>	2,00
<b>Year built</b>	1999
<b>Builder</b>	San Lorenzo
<b>Country</b>	Italy
<b>Displacement (t)</b>	40
<b>Net tonnage</b>	30t
<b>CE norm</b>	A
<b>Hull material</b>	GRP
<b>Hull colour</b>	white
<b>Hull shape</b>	Fast Displacement Hull
<b>Superstructure material</b>	GRP
<b>Deck finish</b>	teak
<b>Cockpit deck finish</b>	teak
<b>Antifouling (year)</b>	2023
<b>Window frame</b>	stainless steel
<b>Window material</b>	tempered glass
<b>Portholes</b>	stainless steel
<b>Flybridge</b>	yes
<b>Flybridge cover</b>	yes
<b>Radar arch</b>	non collapsible
<b>Fuel tank (litre)</b>	aluminium 4200L, Perluman
<b>Level indicator (fuel tank)</b>	yes
<b>Freshwater tank (litre)</b>	GRP 1000L
<b>Blackwater tank (litre)</b>	700L
<b>Blackwater tank extraction</b>	yes



Wheel steering	hydraulic
Flybridge helm position	hydraulic

## ACCOMMODATION

Cabins	3
Berths	6
Deck saloon	yes
Saloon	yes
Headroom saloon (m)	196cm
Heating	central heating Reverse Cycle Airco
Air-conditioning	reverse cycle airco 48.000 BTU
Navigation center	yes
Chart table	yes
Galley	yes
Countertop	granite
Sink	yes
Cooker	ceramic
Oven	yes
Microwave	yes
Fridge	yes
Freezer	yes
Hot water system	220V + engine
Water pressure system	electrical
Crockery	yes
Owners cabin	double bed
Bed length (m)	200cmx200cm
Bathroom	separate
Toilet	separate
Toilet system	electric
Shower	separate
Guest cabin 1	twin single



<b>Bed length (m)</b>	194cm
<b>Bathroom</b>	separate
<b>Toilet</b>	separate
<b>Toilet system</b>	electric
<b>Wash basin</b>	at the toilet
<b>Shower</b>	separate
<b>Guest cabin 2</b>	twin single
<b>Bed length (m)</b>	194cm
<b>Bathroom</b>	separate
<b>Toilet</b>	separate
<b>Toilet system</b>	electric
<b>Wash basin</b>	at the toilet
<b>Shower</b>	separate
<b>Washing machine/dryer combi</b>	yes
<b>Flybridge</b>	yes
<b>Extra info</b>	SeaDOO Jetski

## MACHINERY

<b>No of engines</b>	2
<b>Make</b>	MAN
<b>Type</b>	D2842LE402
<b>HP</b>	1100
<b>kW</b>	809.60
<b>Fuel</b>	diesel
<b>Engine hours</b>	875
<b>Engine cooling system</b>	freshwater heat exchanger
<b>Drive</b>	shaft
<b>Engine controls</b>	electrical Microcommander
<b>Bowthruster</b>	yes
<b>Propeller type</b>	fixed
<b>Electric bilge pump</b>	yes



<b>Bilge alarm</b>	yes
<b>Electrical installation</b>	24V / 220V
<b>Generator</b>	Kohler 16kW
<b>Running hours generator</b>	416h
<b>Generator 2</b>	Kohler
<b>Running hours generator 2</b>	3058h
<b>Start battery</b>	yes
<b>Service battery</b>	yes
<b>Bowthruster battery</b>	yes
<b>Windlass battery</b>	yes
<b>Battery monitor</b>	yes
<b>Battery charger</b>	yes
<b>Battery charger/inverter</b>	yes
<b>Shorepower</b>	with cable
<b>Trimtabs</b>	yes

## NAVIGATION

<b>Compass</b>	yes
<b>Compass on flybridge</b>	yes
<b>Depth sounder</b>	yes
<b>Log</b>	yes
<b>Windset</b>	yes
<b>VHF</b>	Shipmate RS 8300
<b>Autopilot</b>	Simrad
<b>Radar</b>	Furuno
<b>Plotter/GPS</b>	Geonav 15 Sunshine
<b>Radar/GPS/plotter</b>	yes
<b>Navigation lights</b>	yes
<b>Searchlight</b>	yes
<b>Loudhailer</b>	yes



## EQUIPMENT

<b>Bimini</b>	yes
<b>Sun awning</b>	yes
<b>Cockpit cushions</b>	yes
<b>Cockpit table</b>	yes
<b>Cockpit chairs</b>	yes
<b>Bathing platform</b>	yes
<b>Boarding ladder</b>	yes
<b>Gangway</b>	Hydraulic
<b>Deck shower</b>	yes
<b>Anchor</b>	Danforth 60Kg
<b>Anchor chain</b>	100m, 10mm diameter
<b>Windlass</b>	electrical 2000W
<b>Deck wash</b>	yes
<b>Deck crane</b>	electric
<b>Sea railing</b>	yes
<b>Pulpit</b>	yes
<b>Wiper</b>	yes
<b>Horn</b>	yes
<b>Binocular</b>	yes
<b>Fenders</b>	yes
<b>Mooring lines</b>	yes
<b>Tools</b>	yes
<b>TV</b>	4 x Flatscreen
<b>Satellite</b>	yes
<b>TracVision ball</b>	KVH Tracvision G6 + Tracvision 5
<b>Radio-cd player</b>	Sony Hifi-System
<b>Speakers in salon</b>	yes
<b>Speakers in cabin</b>	yes
<b>Clock - barometer</b>	yes
<b>Fire extinguisher</b>	New in 2024



Extinguisher in engine room

CO2, 30Kg



# SANLORENZO 62



# SANLORENZO 62

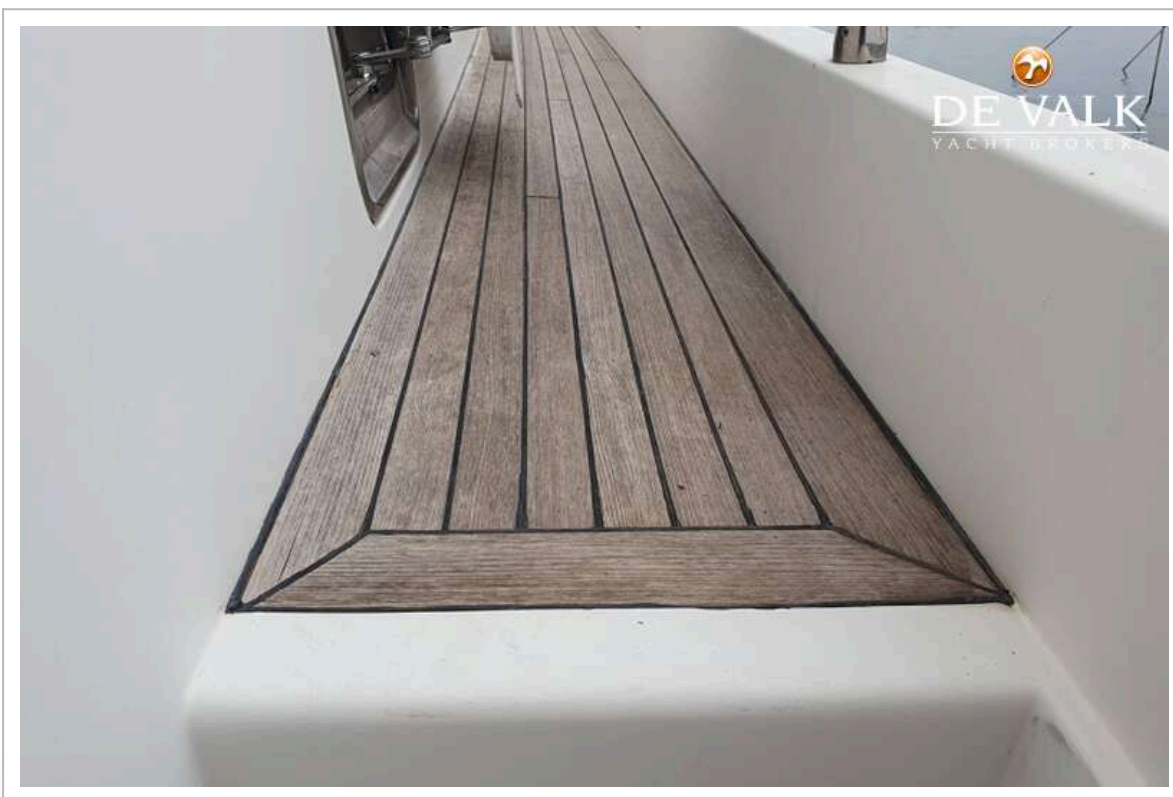


# SANLORENZO 62

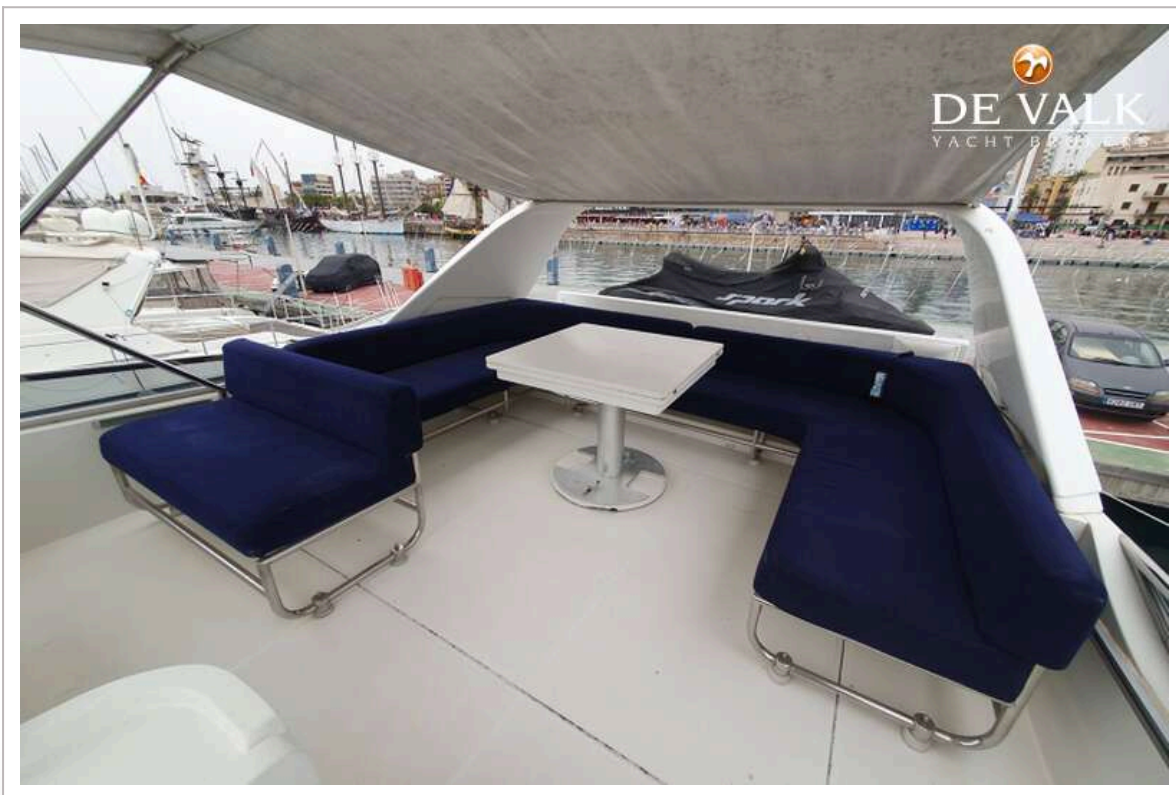
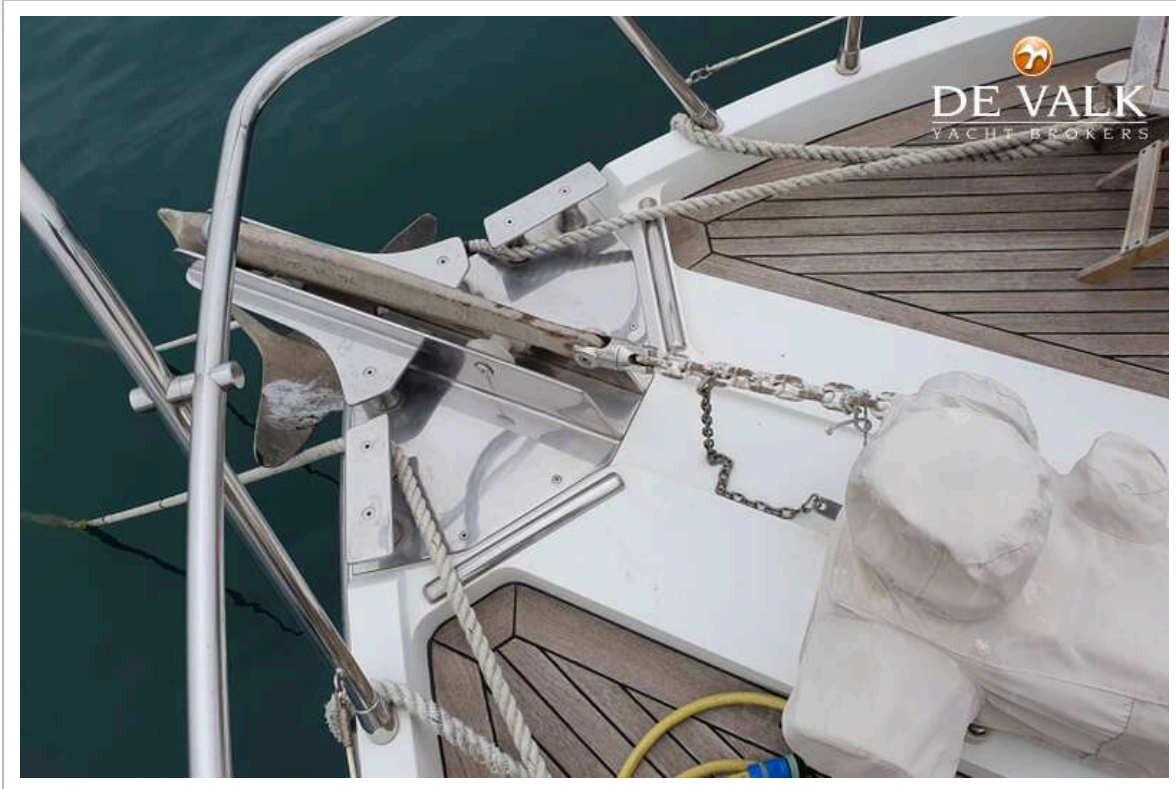


# SANLORENZO 62





# SANLORENZO 62



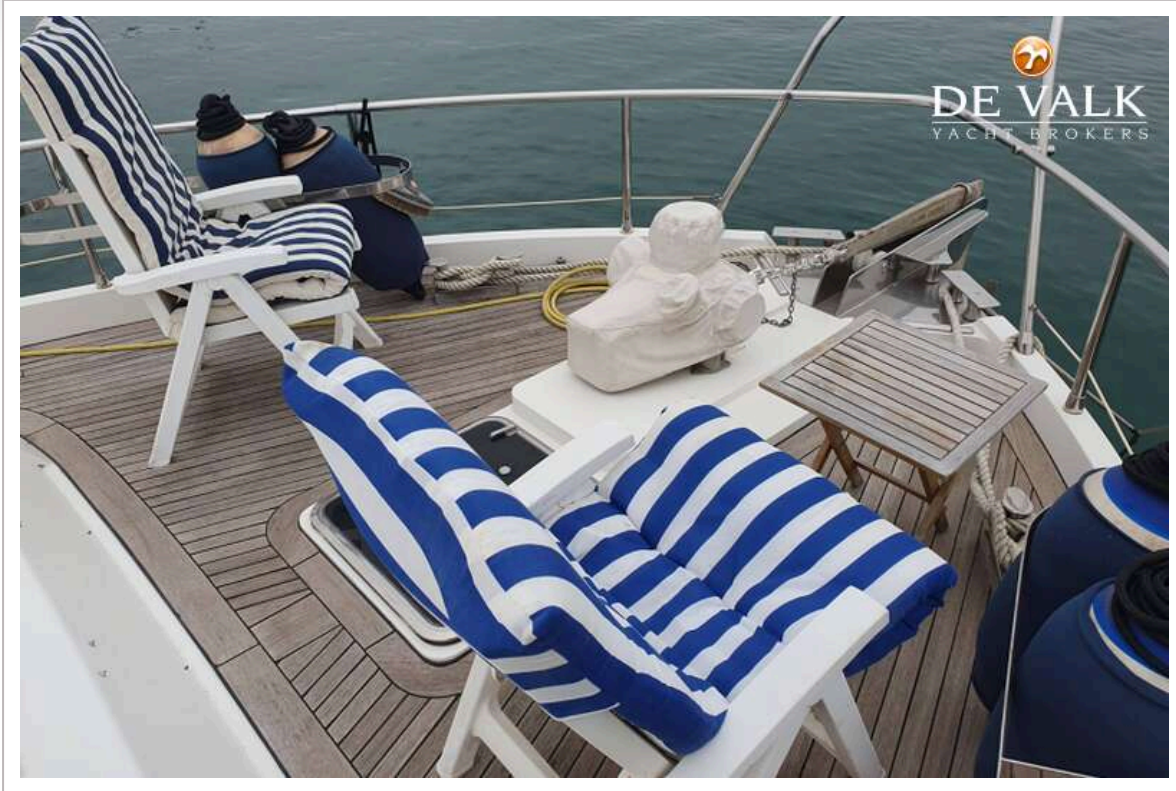
# SANLORENZO 62



# SANLORENZO 62

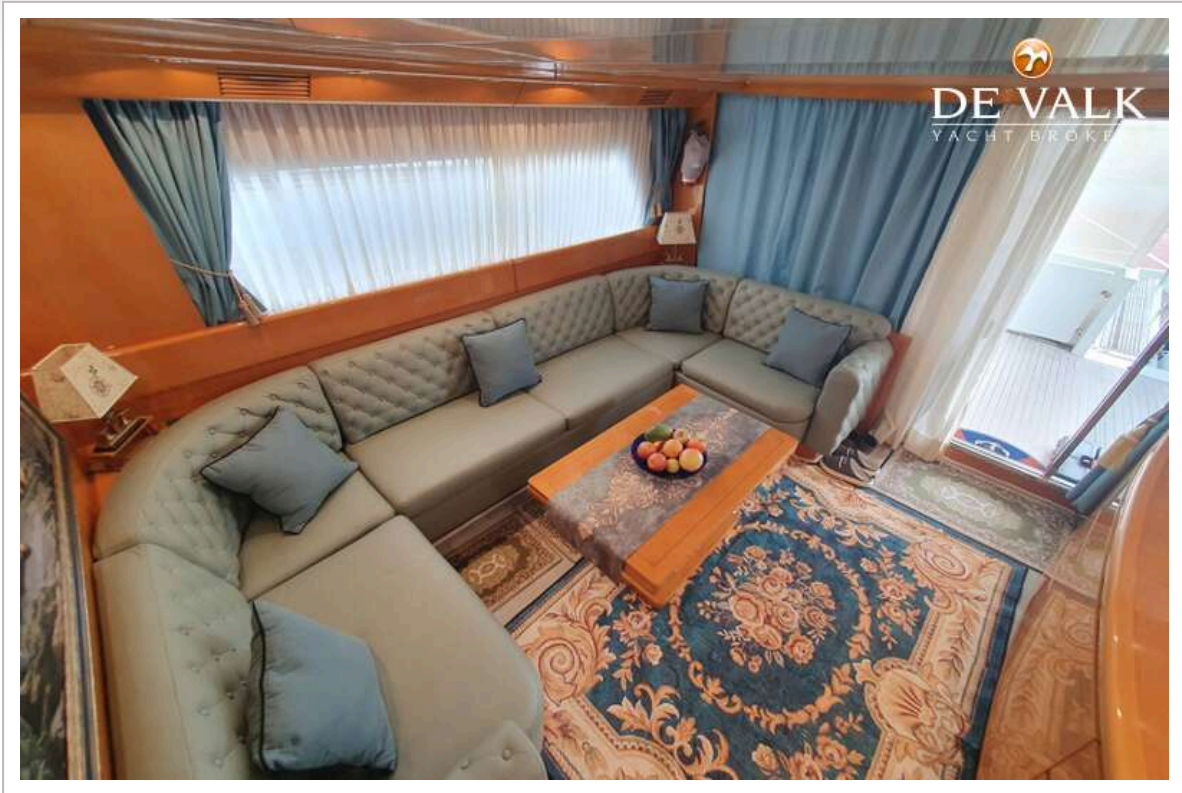


# SANLORENZO 62





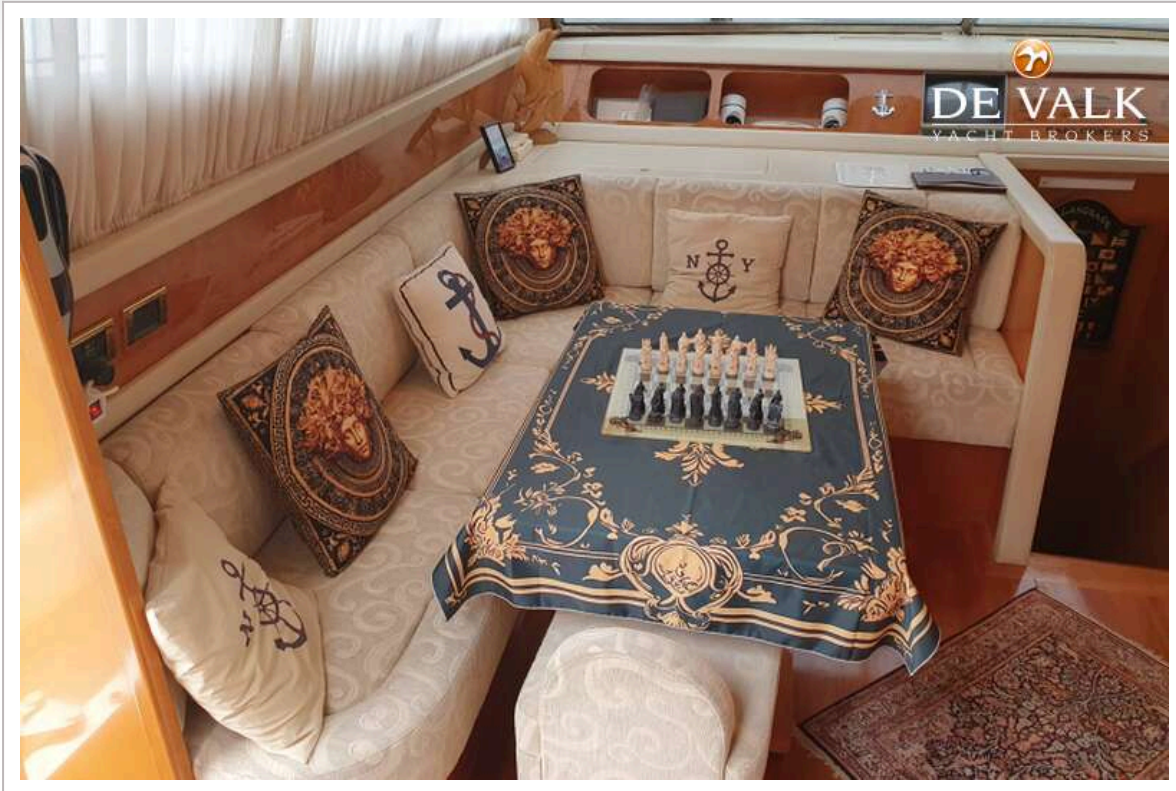
# SANLORENZO 62



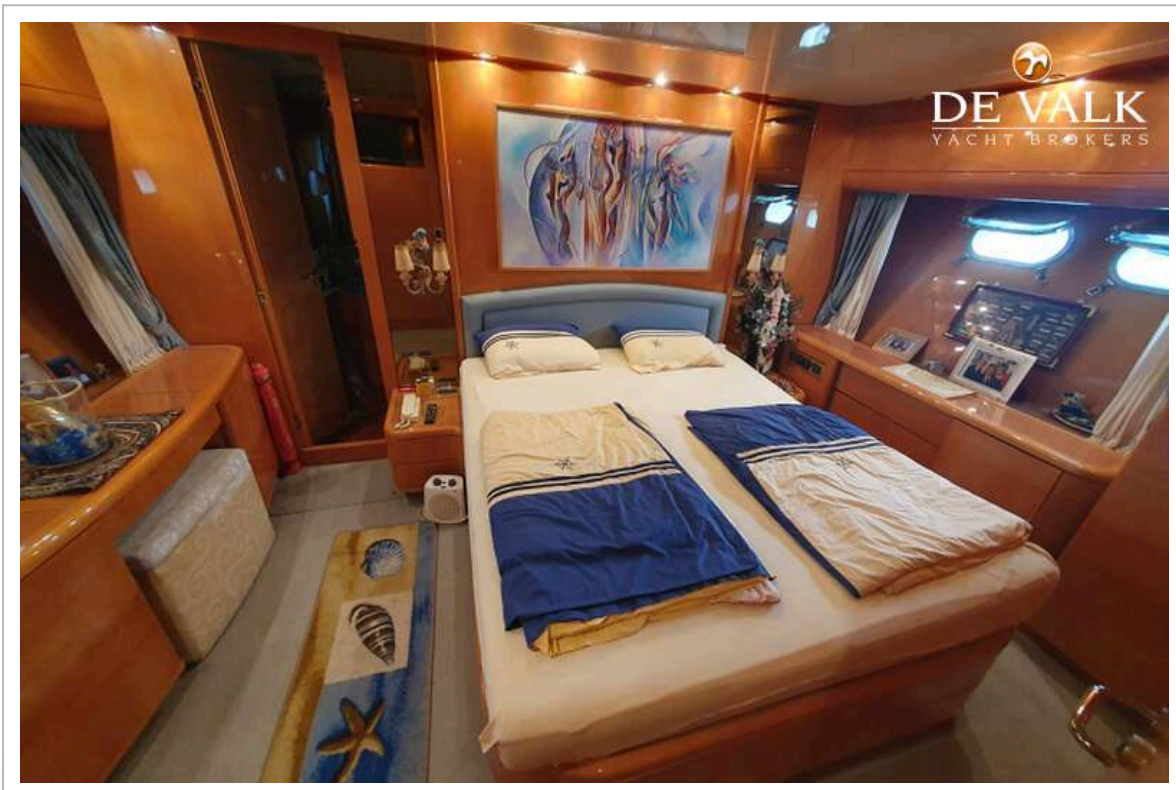
# SANLORENZO 62



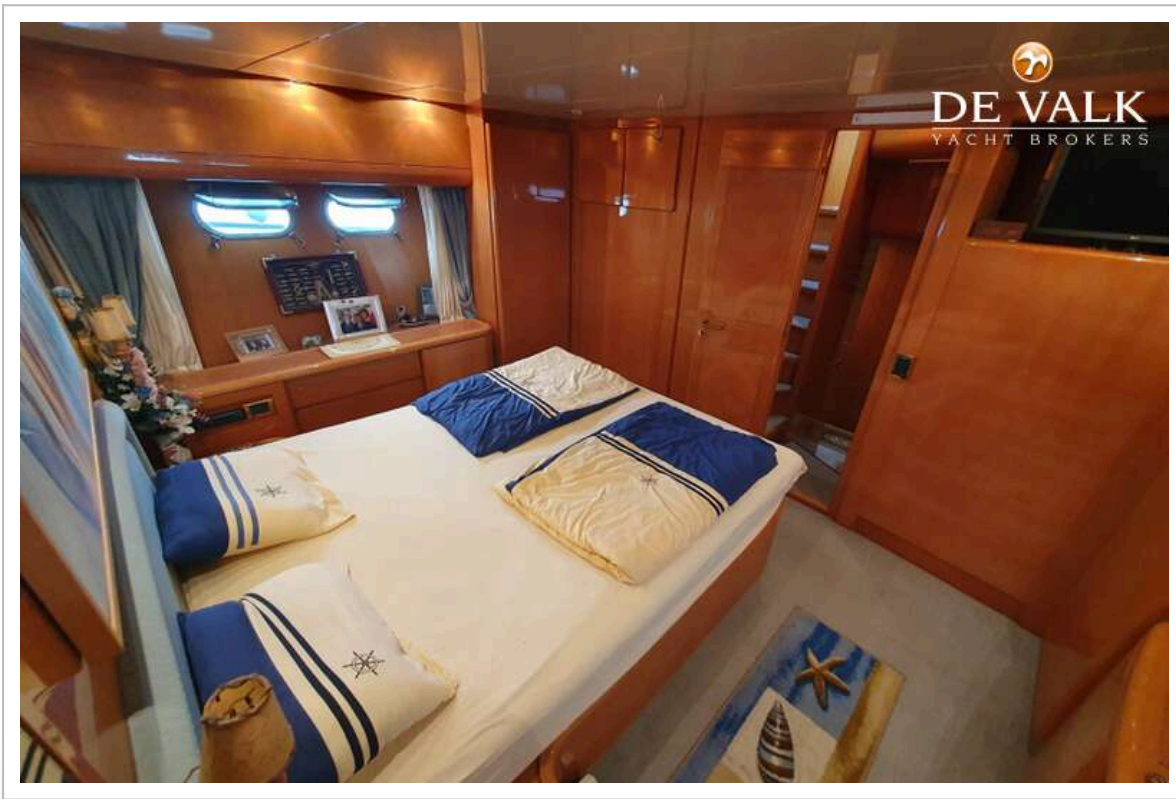
# SANLORENZO 62



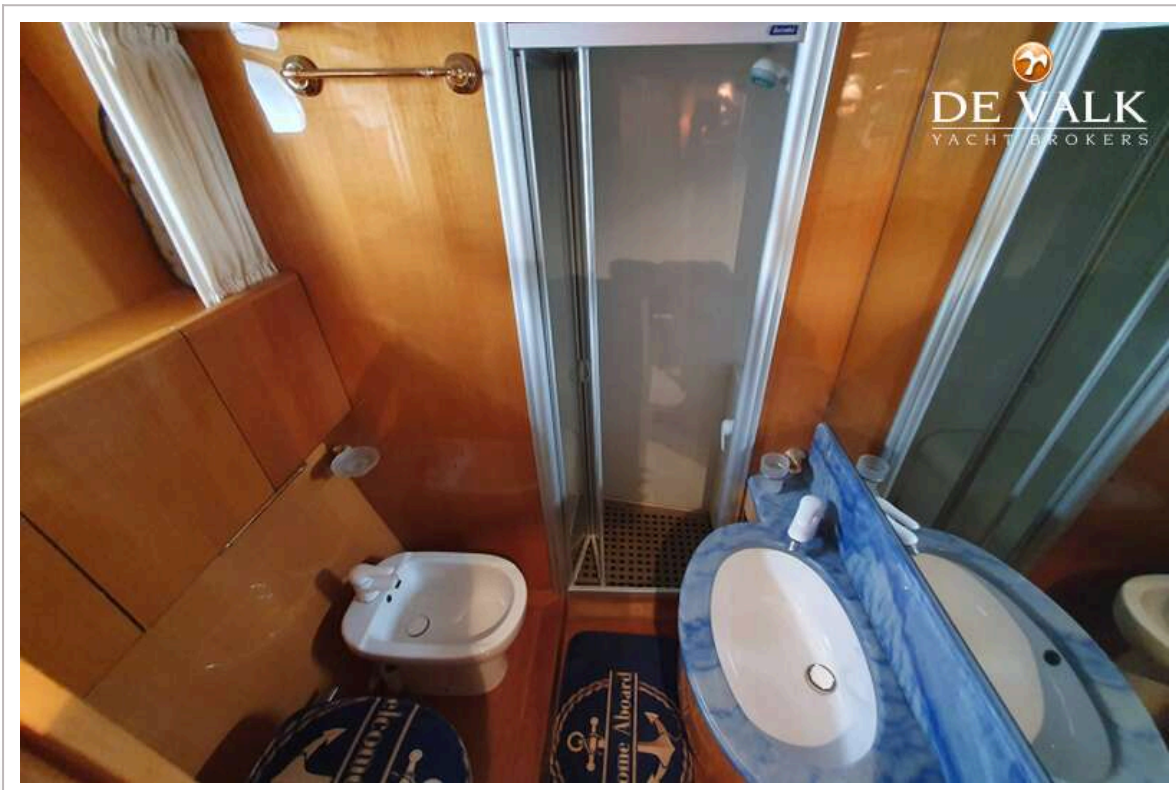
# SANLORENZO 62

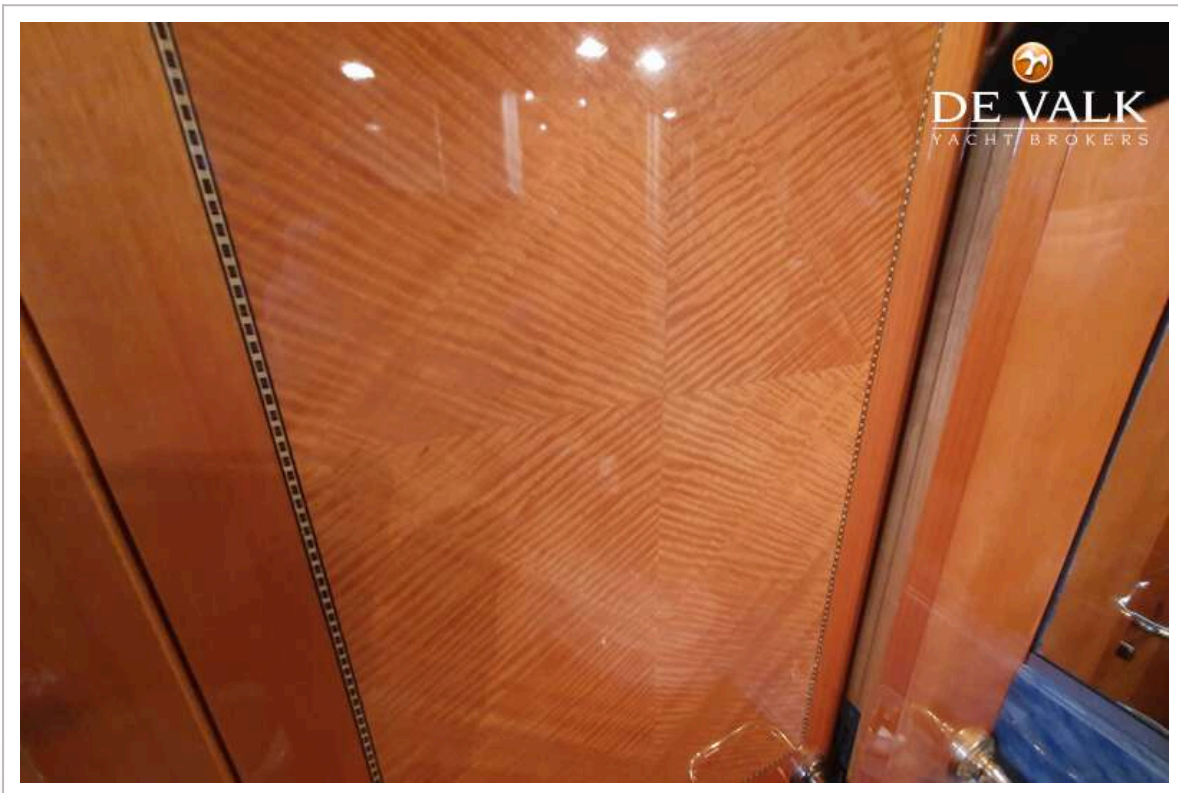
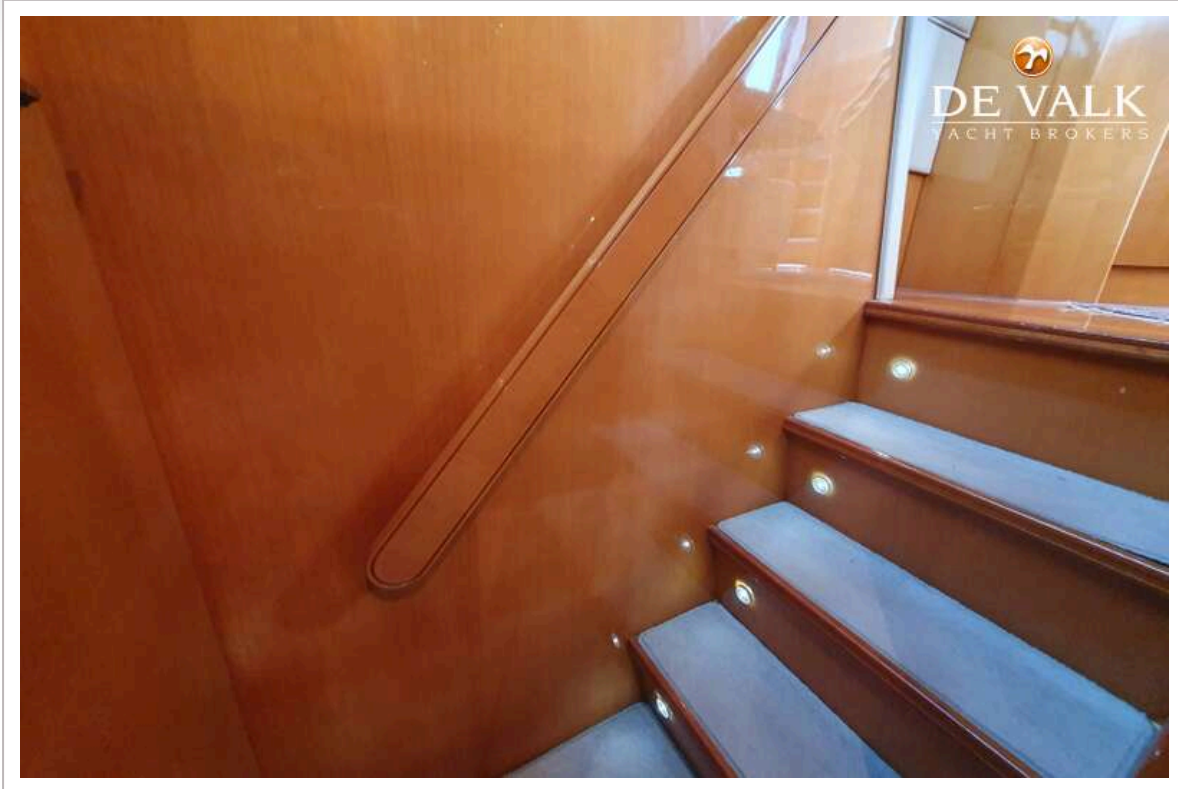


# SANLORENZO 62



# SANLORENZO 62





# SANLORENZO 62



