



DE VALK
YACHT BROKERS



BAVARIA 51 CRUISER



DE VALK
YACHT BROKERS

BAVARIA 51 CRUISER

BROKER'S COMMENTS

This 2017 Bavaria Cruiser 51 is the perfect boat if you are looking für a big sailing yacht. She is powered by a Volvo Penta D2-75, equipped with Garmin electronics and professionally maintained with annual inspections. Configured with 5 cabins and 3 heads, she offers generous guest capacity and can be easily converted into an owner's version, ideal for private or commercial use.

Oliver Stehula

SPECIFICATIONS

Dimensions	15.59 x 4.67 x 2.27 (m)	Builder	Bavaria Yachtbau GmbH
Built	2017	Cabins	5
Material	GRP	Berths	10
Engine(s)	1 x Volvo Penta D2-75 diesel	Hp/Kw	75.00 (hp), 55.20 (kw)
Asking price	€ 225.000 (VAT Not paid)	Lying	at sales office

CONTACT

Sales office	De Valk Palma	Telephone	+34 971 40 29 11
Address	Port. Cala Nova, Avda. Joan Miro, 327 07015 Palma de Mallorca ES	E-mail	palma@devalk.nl

DISCLAIMER

These particulars are given in good faith as supplied but cannot be guaranteed.



BAVARIA 51 CRUISER

GENERAL

Model	BAVARIA 51 CRUISER
Type	sailing yacht
LOA (m)	15,59
LWL (m)	14,99
Beam (m)	4,67
Draft (m)	2,27
Air draft (m)	22,30
Year built	2017
Builder	Bavaria Yachtbau GmbH
Country	Germany
Displacement (t)	14
CE norm	A
Hull material	GRP
Hull colour	white
Keel type	bulb keel
Superstructure material	GRP
Deck material	GRP
Deck finish	teak
Cockpit deck finish	teak
Antifouling (year)	2026
Window frame	aluminium
Window material	polycarbonate
Deckhatch	Lewmar
Fuel tank (litre)	280
Freshwater tank (litre)	560
Wheel steering	cable steering Jefa two carbonnautic composite wheel

ACCOMMODATION

Cabins	5
Berths	10



BAVARIA 51 CRUISER

Heating	2x 4kW hot air
Galley	yes
Countertop	corian
Sink	stainless steel Double
Cooker	calor gas 3 burner
Oven	yes
Fridge	yes
Hot water system	220V + engine
Water pressure system	electrical
Bathroom	shared
Toilet	shared
Toilet system	manual
Wash basin	in the bathroom
Shower	separate
Guest cabin 1	double bed Stern starboardside
Guest cabin 2	double bed Stern portside
Guest cabin 3	v-bed Bow portside
Guest cabin 4	v-bed Bow starboardside
Extra info	One cabin with bunk bed

MACHINERY

No of engines	1
Make	Volvo Penta
Type	D2-75
HP	75
kW	55.20
Fuel	diesel
Year installed	2017
Maximum speed (kn)	8
Cruising speed (kn)	6
Consumption (l/hr)	1111



BAVARIA 51 CRUISER

Engine cooling system	freshwater heat exchanger
Drive	sail-drive
Engine controls	bowden cable
Gearbox	mechanical
Bowthruster	Sleipner Side Power SE-100
Gearbox	mechanical
Exhaust	watercooled
Propeller type	fixed
Manual bilge pump	yes
Electric bilge pump	yes
Electrical installation	230 Volt
Start battery	1x Varta 70Ah
Service battery	2x Exide 140Ah
Bowthruster battery	Combined with Windlass
Shorepower	with cable

NAVIGATION

Compass	Plastimo Olimpic 135
Depth sounder/log	Garmin GMI 20
Windset	Garmin GMI 20
VHF	VHF 300i AIS
Autopilot	Garmin
Rudder angle indicator	yes
Plotter	2x Garmin GPS MAP 721
Navigation lights	yes

EQUIPMENT

Sprayhood	yes
Bimini	yes
Cockpit cushions	yes
Cockpit table	yes



BAVARIA 51 CRUISER

Bathing platform	Teak
Boarding ladder	yes
Deck shower	yes
Anchor	Delta
Anchor chain	yes
Windlass	electrical Lewmar
Dinghy	inflatable
Life raft	yes
Lifejackets	yes
Safety harness	yes
Radio	Fusion MS-NRX 300
Cockpit speakers	One pair
Speakers in salon	One pair
Fire extinguisher	yes

RIGGING

Rigging	cutter
Standing rigging	wire
Brand mast	Seldén
Material mast	aluminium
Spreaders	Two pairs
Mainsail	New in 2022
Stoway mast	Mast- in Furler
Genoa	New in 2022
Genoa furler	Furlex 404S
Gennaker	Genacker Kit
Backstay adjuster	mechanical
Boomvang	mechanical and tackle
Primary sheet winch	yes
Genoa sheetwinches	2x Lewmar self tailing 2 gear
Halyard winches	2x Lewmar self tailing 2 gear



Spinnaker winch

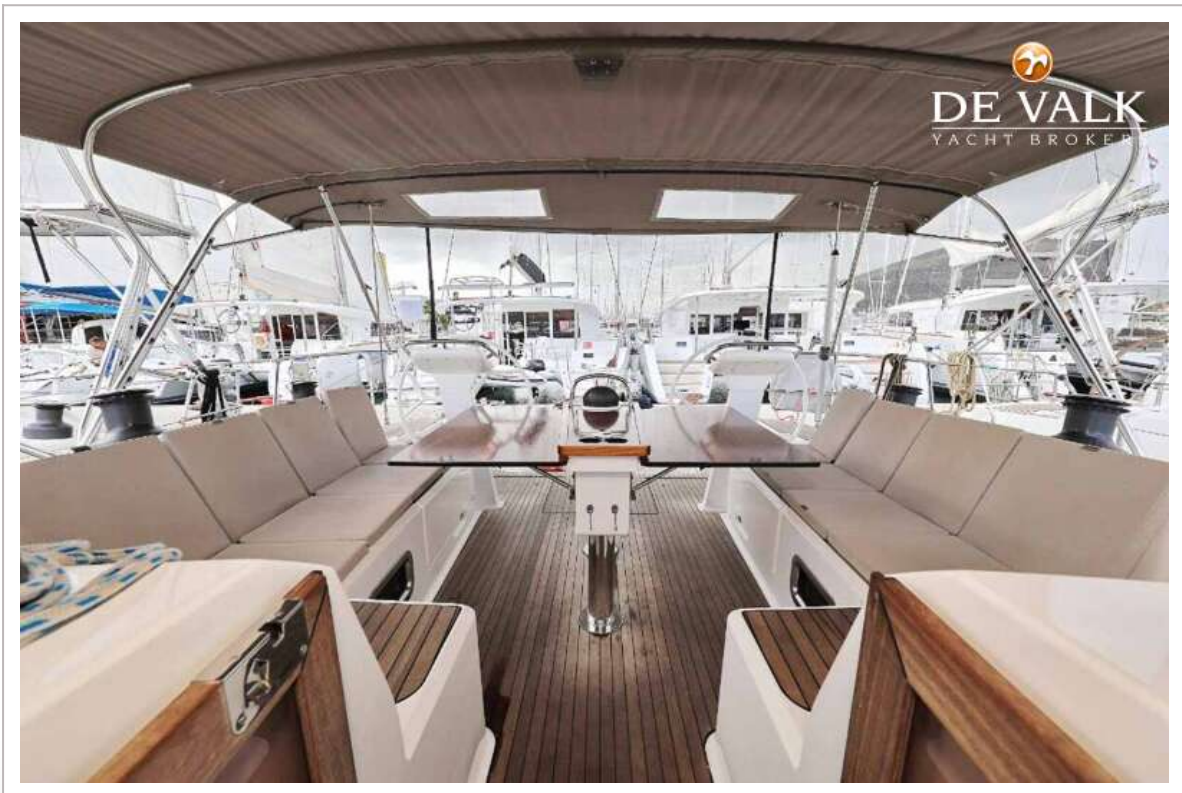
2x Lewmar self tailing 2 gear



BAVARIA 51 CRUISER



BAVARIA 51 CRUISER



BAVARIA 51 CRUISER



BAVARIA 51 CRUISER



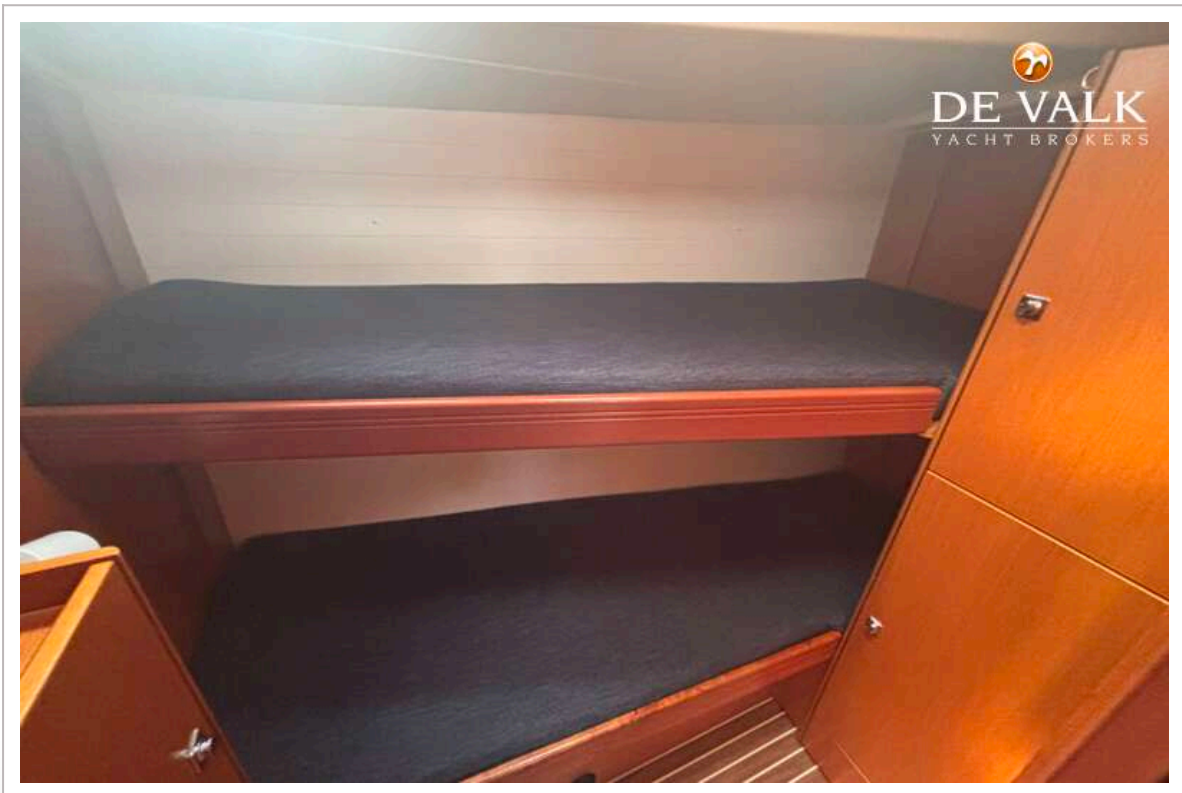
BAVARIA 51 CRUISER



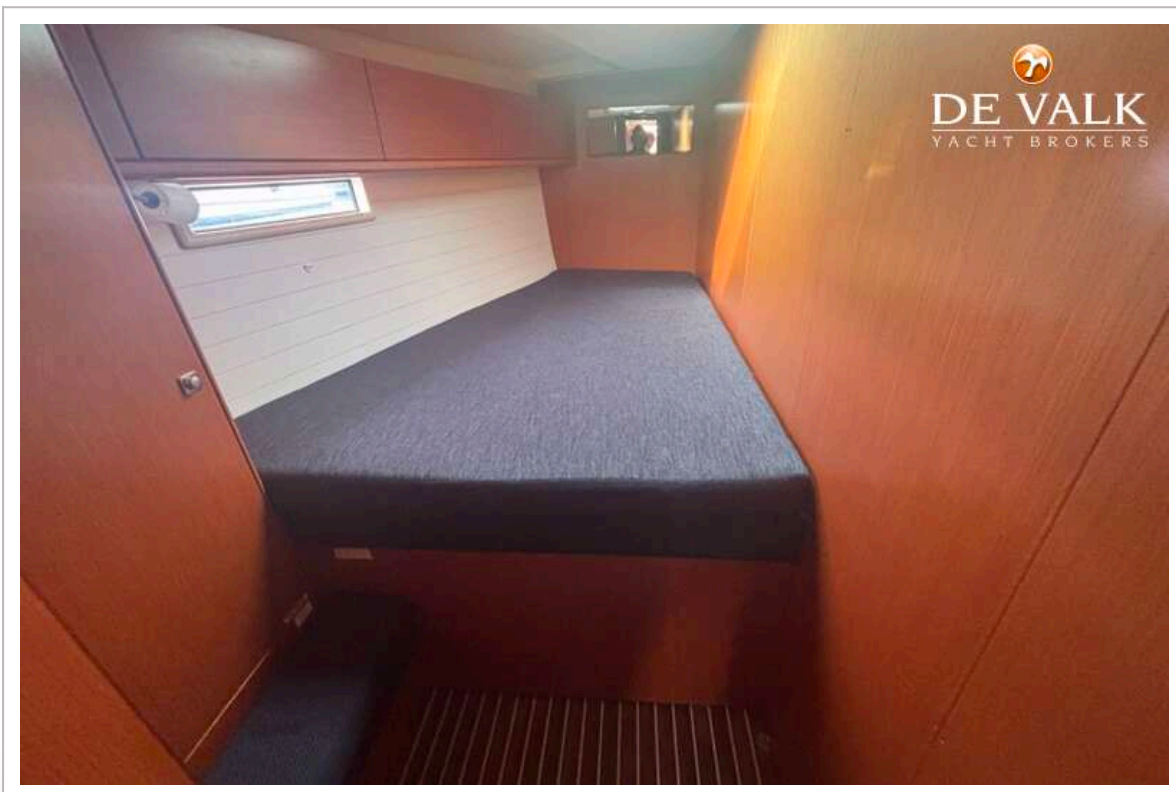
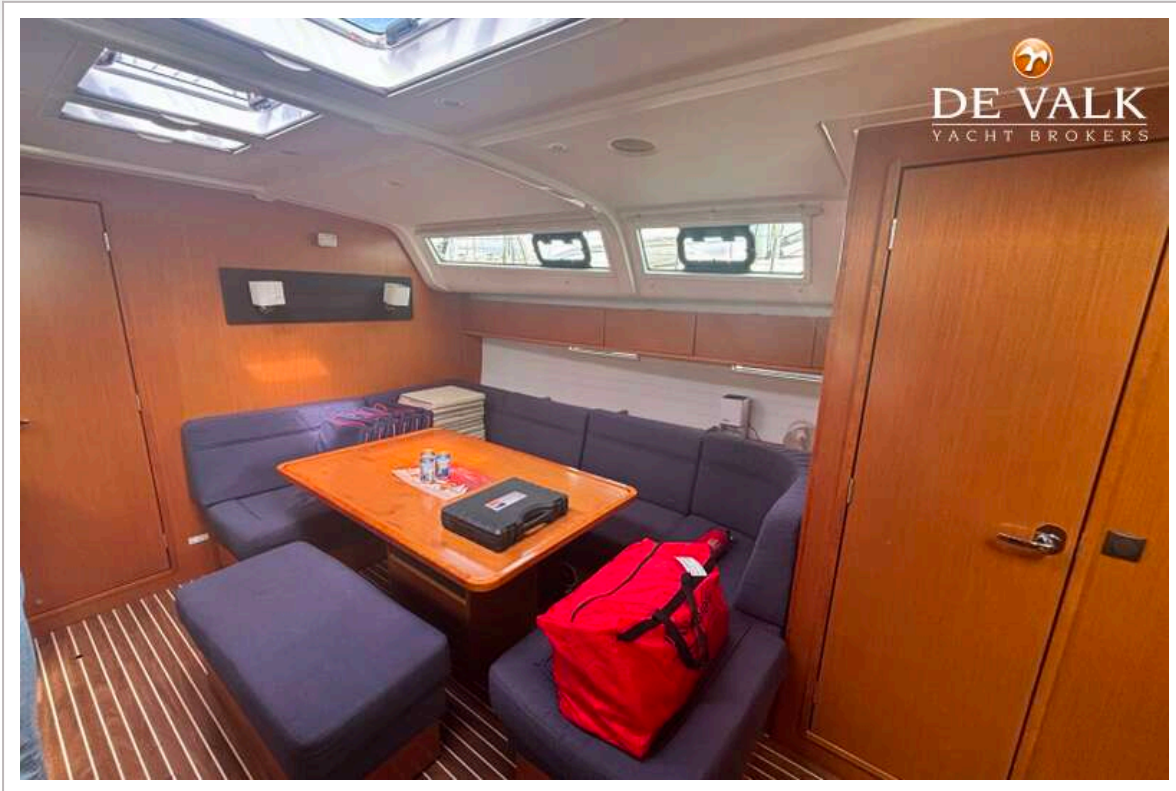
BAVARIA 51 CRUISER



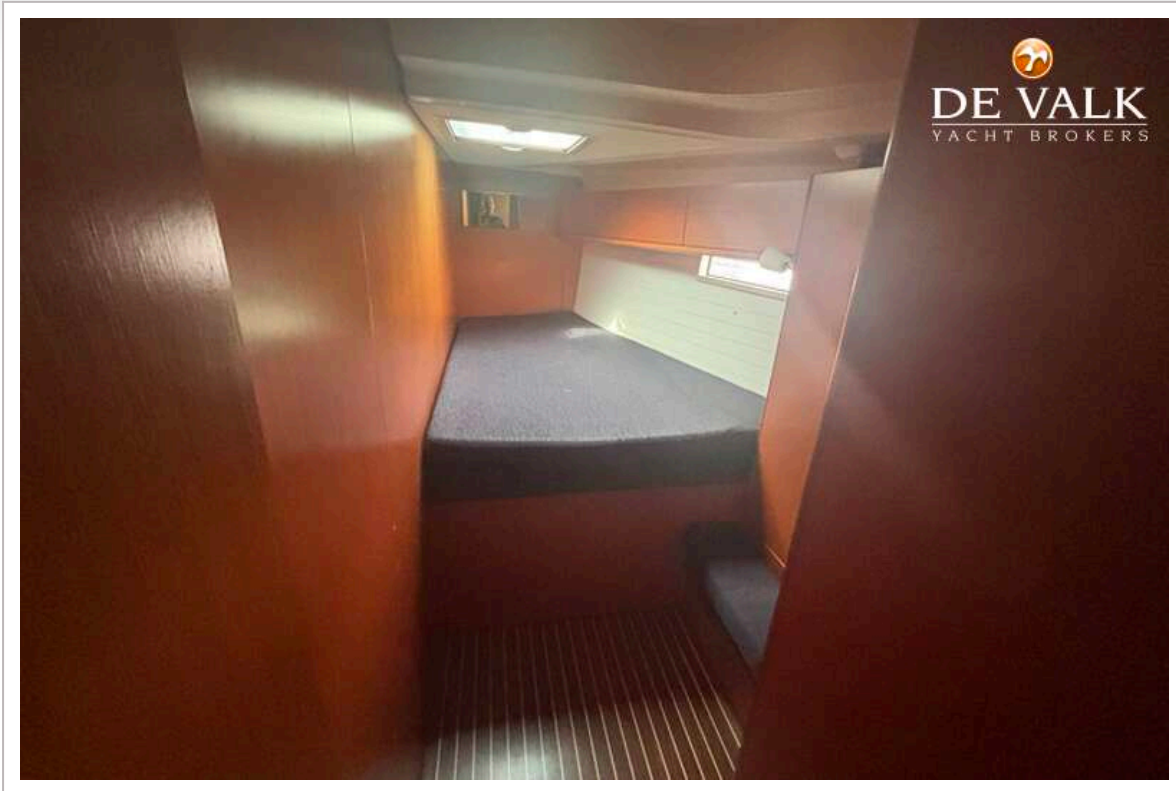
BAVARIA 51 CRUISER



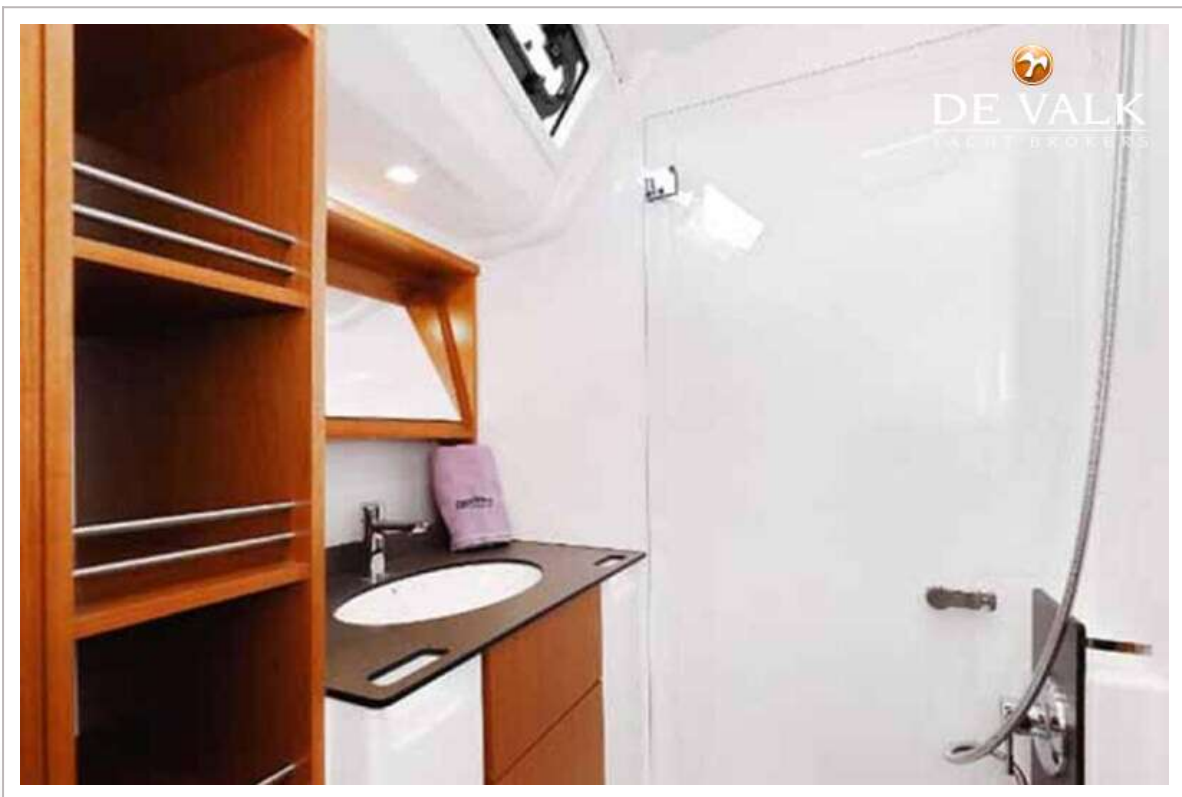
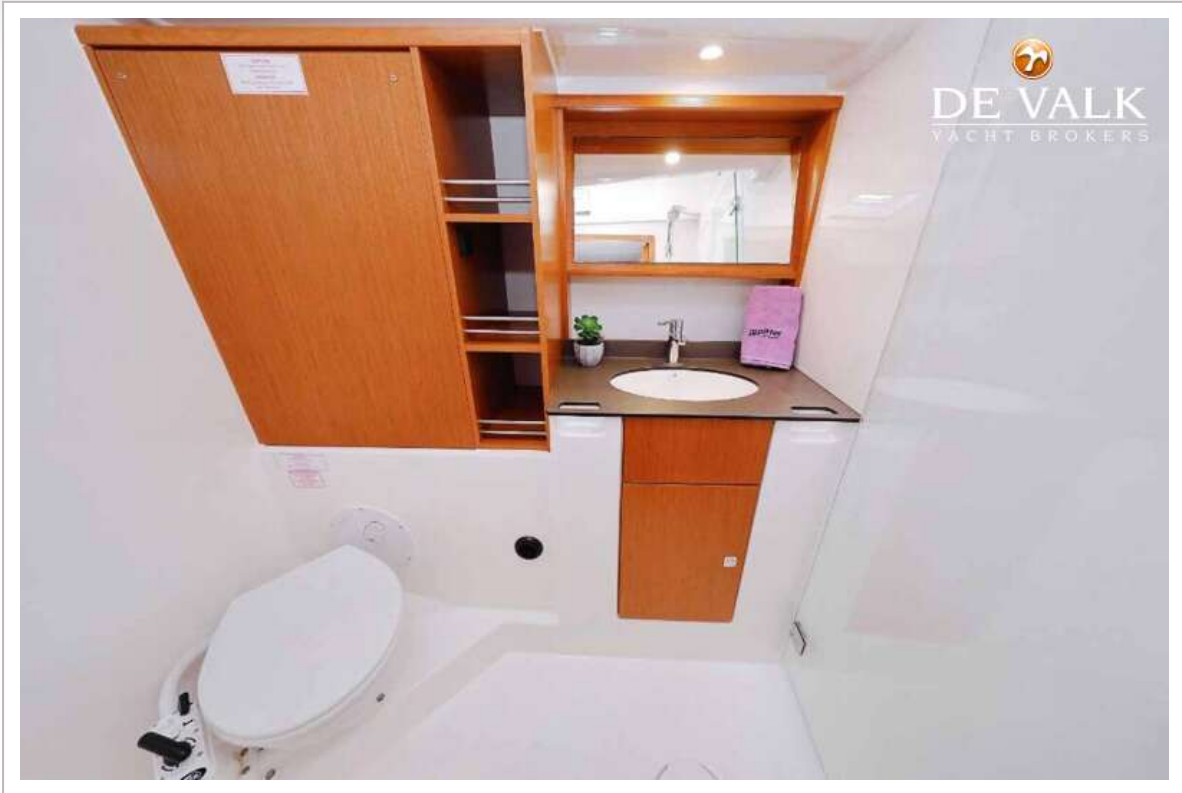
BAVARIA 51 CRUISER



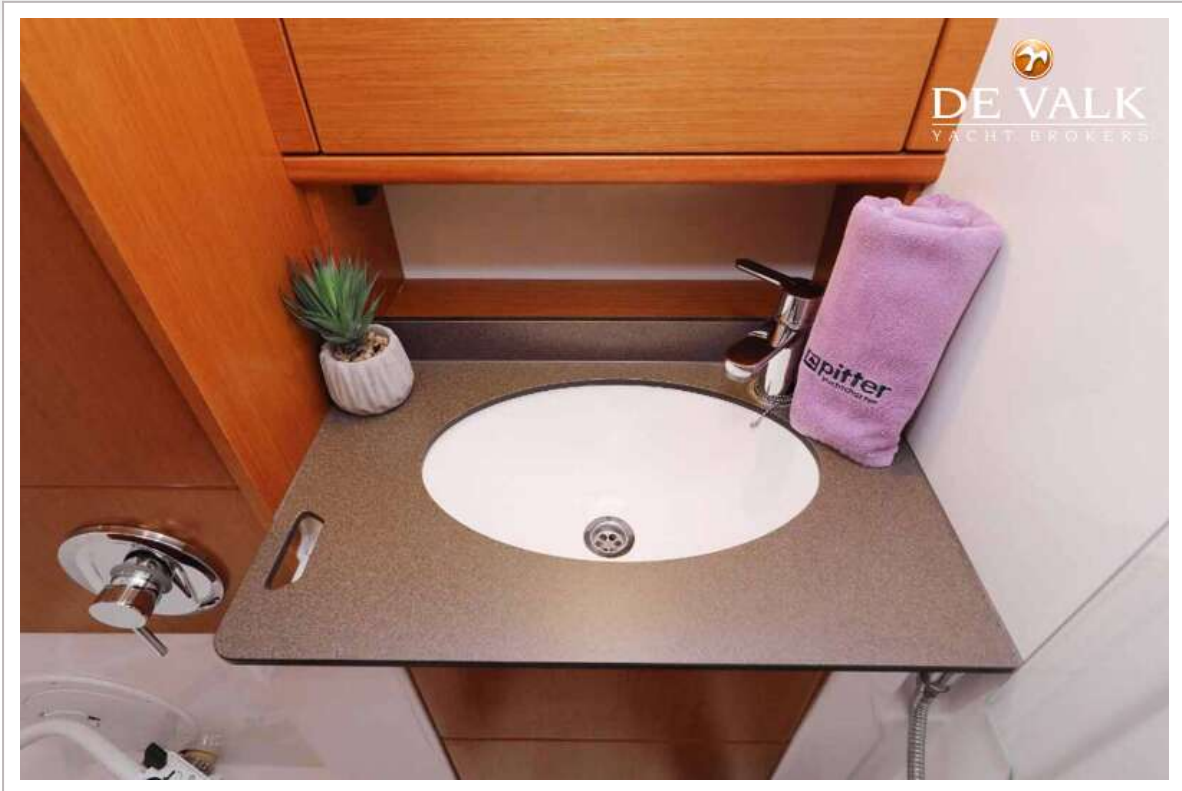
BAVARIA 51 CRUISER



BAVARIA 51 CRUISER



BAVARIA 51 CRUISER



BAVARIA 51 CRUISER



BAVARIA 51 CRUISER

