



BAVARIA 44 VISION



DE VALK
YACHT BROKERS

BROKER'S COMMENTS

This spacious Bavaria 44 Vision is a really well maintained, fully equipped and slightly used blue water cruiser which comes fully ready for the new sailing season. Fresh antifouling, serviced engine, polished. Recently new through hull fittings and seacocks, new fans in all cabins etc. Marina berth paid till end March 2027!

Miha Spendal

SPECIFICATIONS

Dimensions	12.99 x 4.39 x 1.80 (m)	Builder	Bavaria Yachts
Built	2007	Cabins	3
Material	GRP	Berths	6
Engine(s)	1 x Volvo D-2 75 diesel	Hp/Kw	75.00 (hp), 55.20 (kw)
Asking price	€ 145.000 (VAT Paid)	Lying	at sales office

CONTACT

Sales office	De Valk Istria	Telephone	+386 (1) 600 2704
Address	(Marina Izola) Dantejeva Ulica 22 6310 Izola SI	E-mail	istria@devalk.nl

DISCLAIMER

These particulars are given in good faith as supplied but cannot be guaranteed.



GENERAL

Model	BAVARIA 44 VISION
Type	sailing yacht
LOA (m)	12,99
Beam (m)	4,39
Draft (m)	1,80
Headroom (m)	2,20
Year built	2007
Launched	2007
Builder	Bavaria Yachts
Country	Germany
Designer	J&J
Displacement (t)	9,48
CE norm	A
Hull material	GRP
Hull colour	white Polished April 2026
Keel type	bulb keel
Superstructure material	GRP
Deck material	GRP
Deck finish	non-skid moulded in
Superstructure deck finish	non-skid moulded in
Cockpit deck finish	teak
Antifouling (year)	New April 2026 New April 2026
Dorades	yes
Window frame	aluminium
Portholes	aluminium
Fuel tank (litre)	210
Level indicator (fuel tank)	yes
Freshwater tank (litre)	polyethylene 2 x 180
Level indicator (freshwater)	yes
Blackwater tank (litre)	polyethylene 2 x 80



Level indicator (blackwater)	yes
Wheel steering	chain steering
Emergency tiller	yes

ACCOMMODATION

Cabins	3
Berths	6
Saloon	yes
Headroom saloon (m)	2,2
Heating	diesel ducted hot air Webasto
Air-conditioning	single cycle airco 8000 BTU, on shore power
Chart table	yes
Convertible berth	Saloon table can be lowered
Galley	yes
Countertop	plastic
Sink	stainless steel
Cooker	calor gas
Oven	yes
Fridge	yes
Freezer	yes
Hot water system	220V + engine
Water pressure system	electrical
Owners cabin	double bed
Wardrobe	hanging/drawers/shelves
Toilet	en suite
Toilet system	electric New toilet 2025
Wash basin	in the bathroom
Shower	en suite
Guest cabin 1	double bed
Wardrobe	hanging and shelves
Bathroom	separate



Toilet	en suite
Toilet system	manual
Shower	en suite
Guest cabin 2	double bed
Wardrobe	hanging and shelves
Bathroom	shared
Toilet	shared
Toilet system	manual
Shower	shared

MACHINERY

No of engines	1
Make	Volvo
Type	D-2 75
HP	75
kW	55.20
Fuel	diesel
Year installed	2007
Year of overhaul	New turbine 2024, regular service April 2026
Engine hours	923
Engine cooling system	freshwater heat exchanger
Drive	sail-drive
Bowthruster	electric
Propeller type	folding 3-blade
Manual bilge pump	yes
Electric bilge pump	yes
Electrical installation	yes
Batteries	yes
Start battery	yes
Service battery	New service batteries 2024
Bowthruster battery	New 2025 with its own charger



Battery charger	yes
Solar panel	220 W, new 2025
Shorepower	with cable

NAVIGATION

Compass	yes
Electric compass	yes
Depth sounder/log	yes
Windset	yes
VHF	New 2025, SIMRAD VHF RS 40B with AIS
Autopilot	yes
Rudder angle indicator	yes
GPS	yes
Plotter	yes
Electronic chart(s)	yes
AIS transceiver	yes
Radio receiver	yes
Navigation lights	LED

EQUIPMENT

Sprayhood	Serviced December 2025
Bimini	Serviced December 2025
Cockpit cushions	yes
Boarding ladder	stainless steel
Gangway	yes
Deck shower	yes
Anchor	CQR Plough
Anchor chain	50m
Anchor 2	15kg with anchor rope
Chain counter	With remote control
Windlass	electrical



Dinghy	yes
Outboard	Torqueedo electric
Pushpit	yes
Pulpit	yes
Life raft	yes
Lifejackets	yes
Safety harness	yes
Fenders	yes
Mooring lines	yes
Radio-cd player	yes
Fire extinguisher	yes

RIGGING

Rigging	fractional
Brand mast	Seldén
Material mast	aluminium coated
Mainsail	In-mast furling
Genoa I	yes
Genoa furler	yes
Gennaker	yes
Genoa sheetwinches	2 Electric
Halyard winches	2 Manual
Spinnaker winch	2 Manual



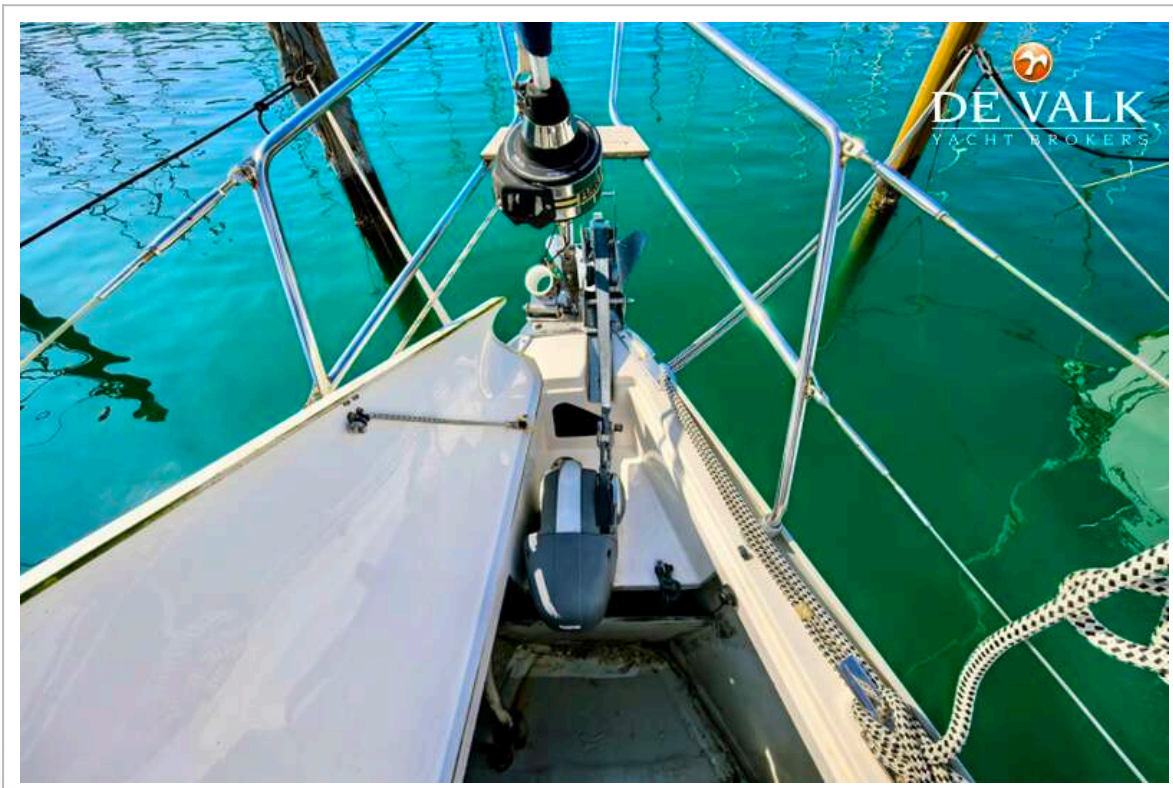
BAVARIA 44 VISION



BAVARIA 44 VISION



BAVARIA 44 VISION



BAVARIA 44 VISION



BAVARIA 44 VISION



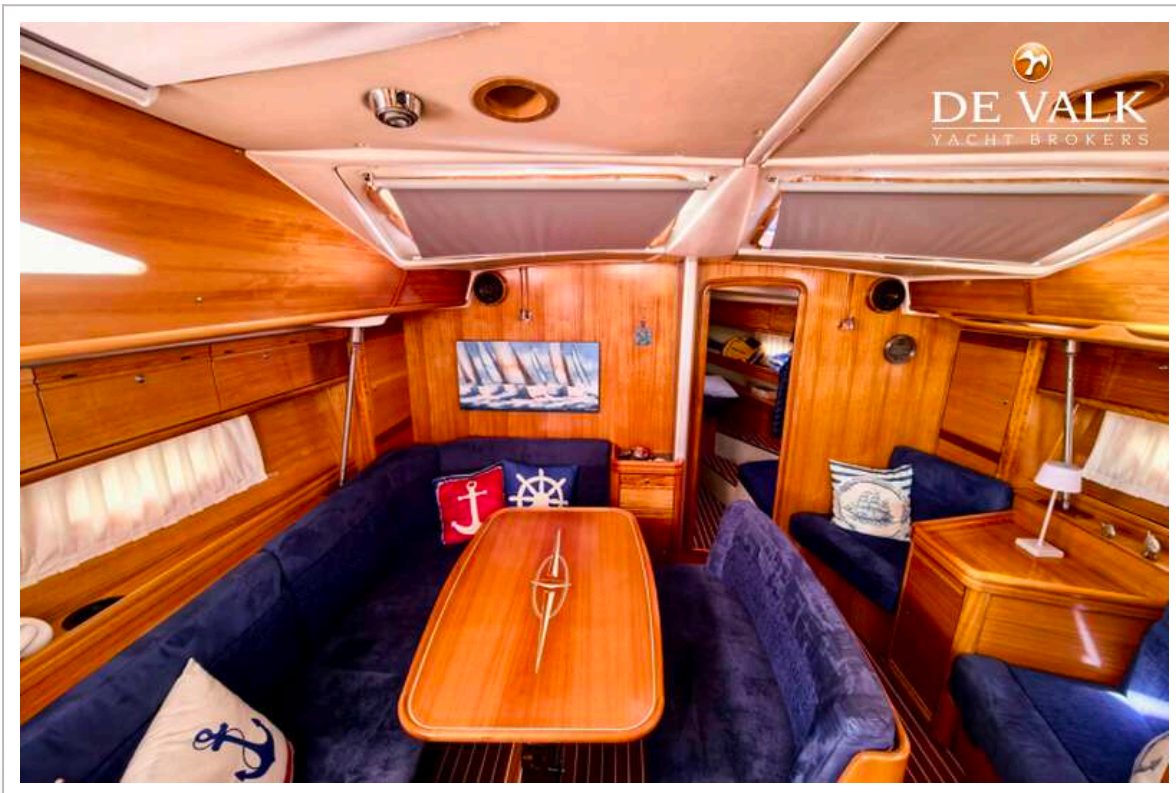
BAVARIA 44 VISION



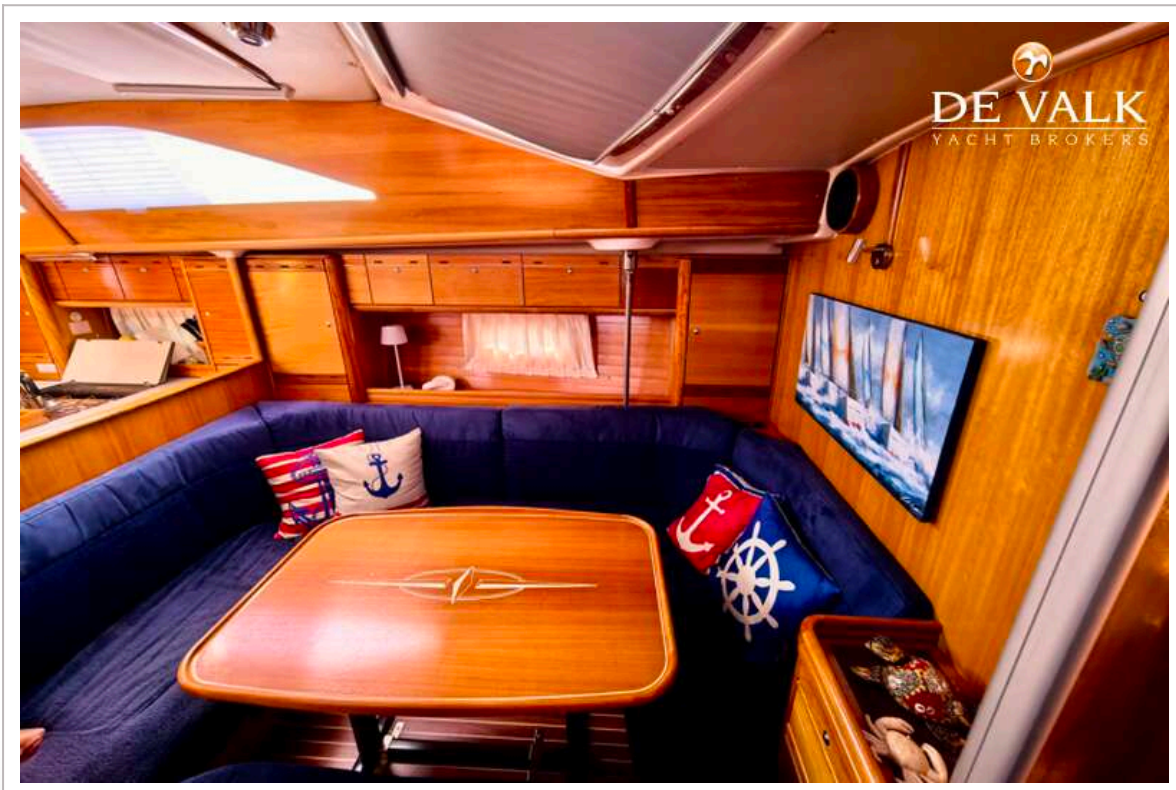
BAVARIA 44 VISION



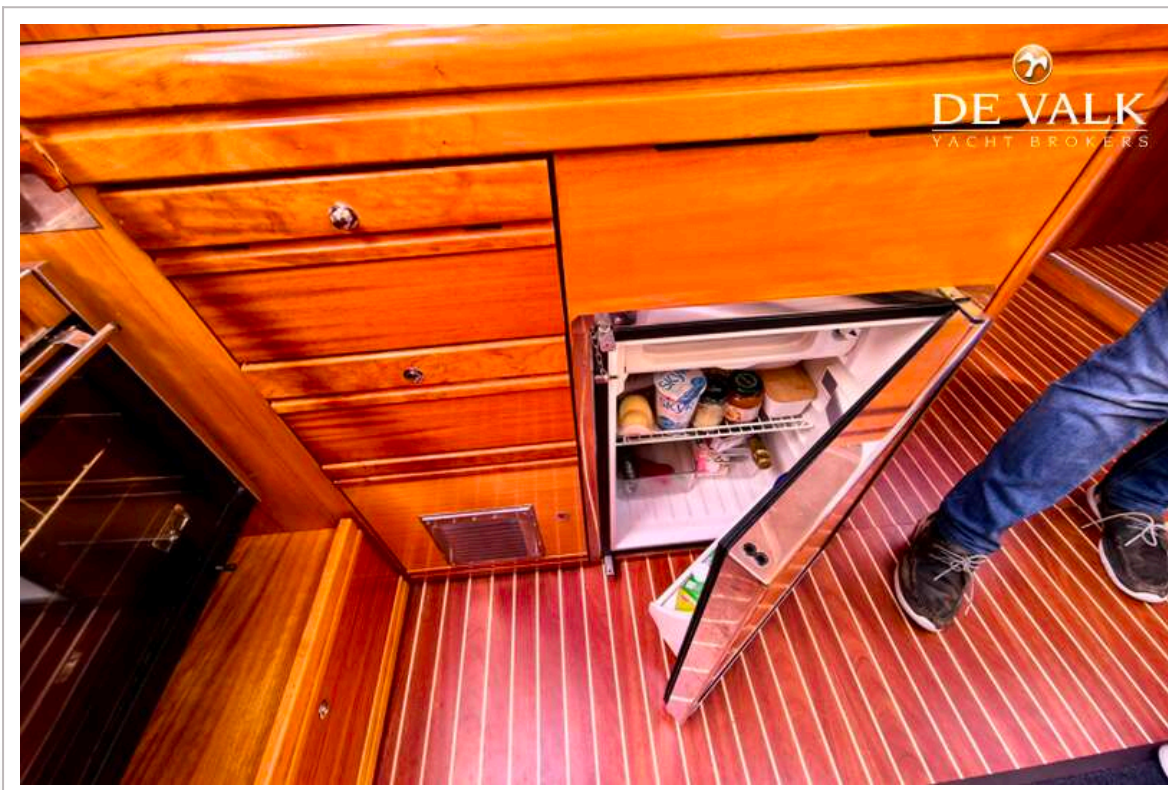
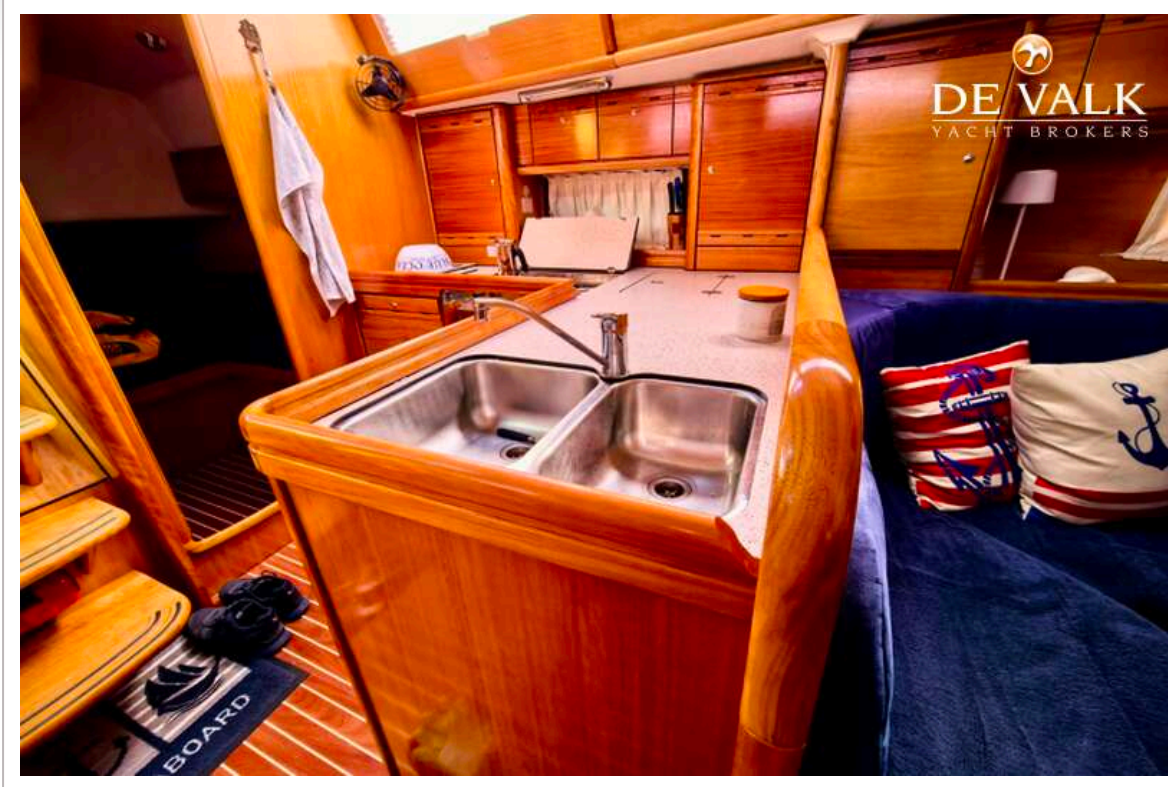
BAVARIA 44 VISION



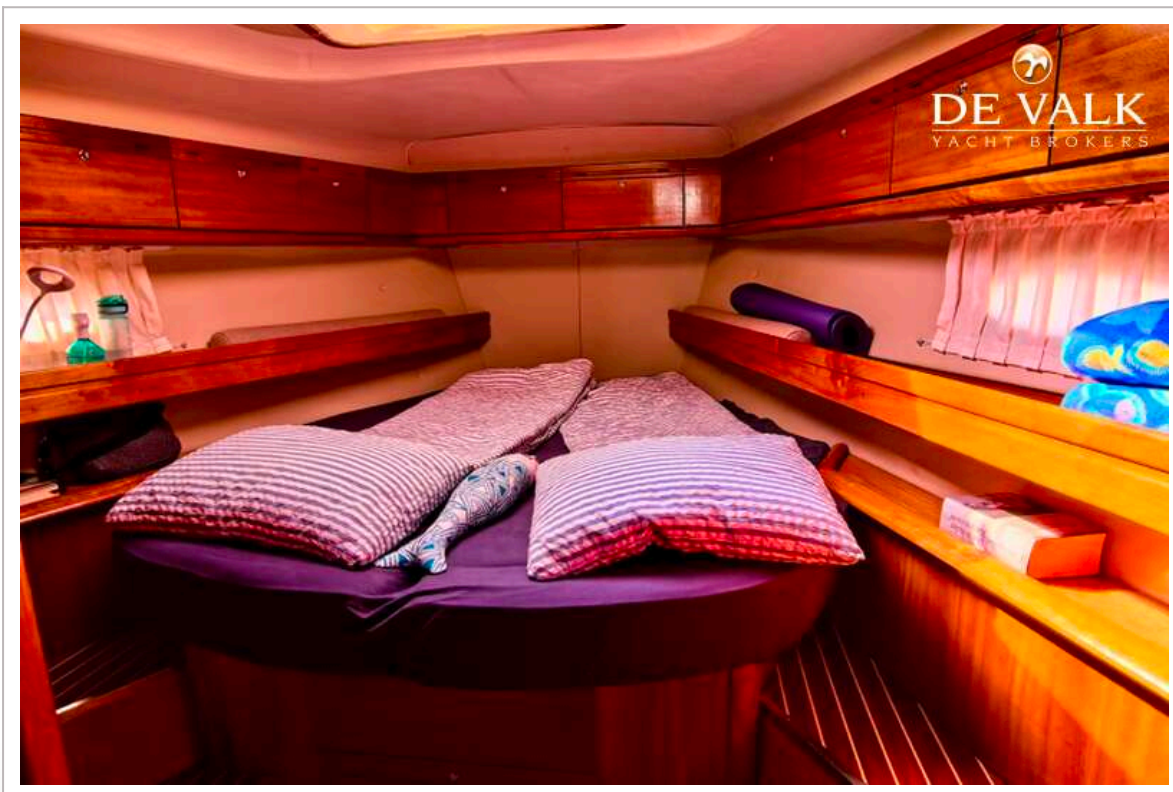
BAVARIA 44 VISION



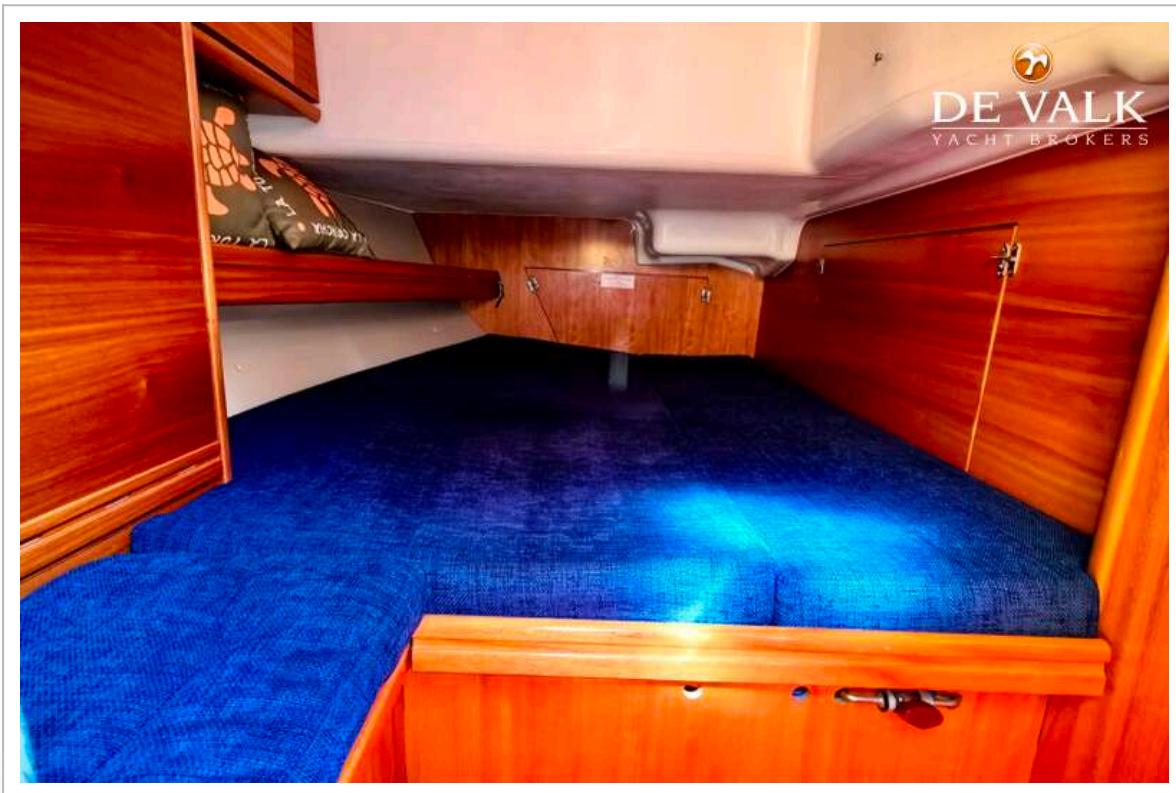
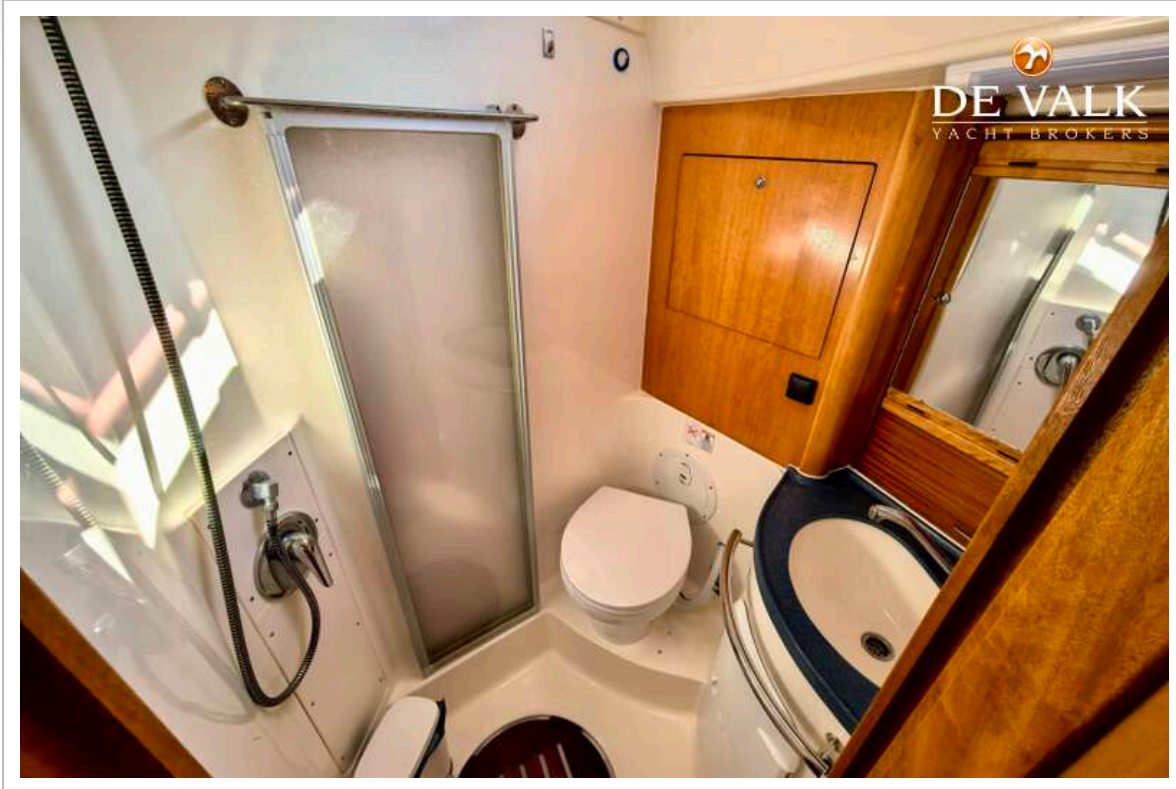
BAVARIA 44 VISION



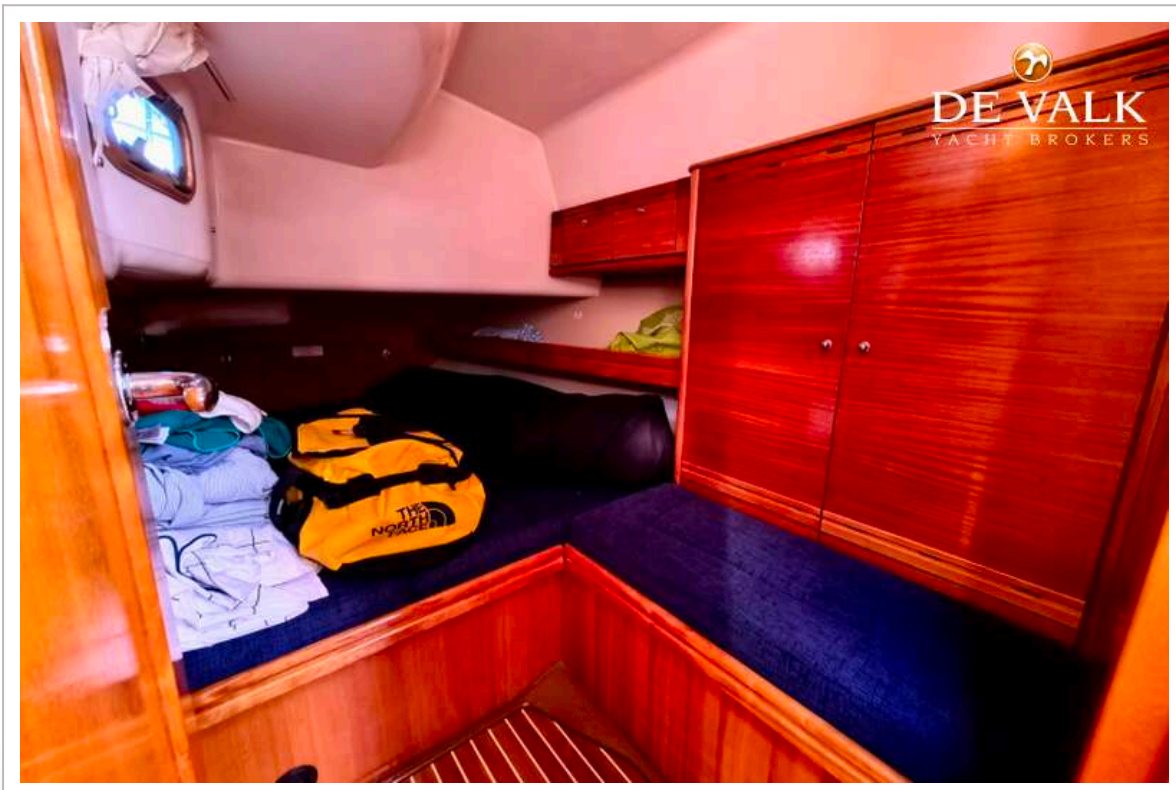
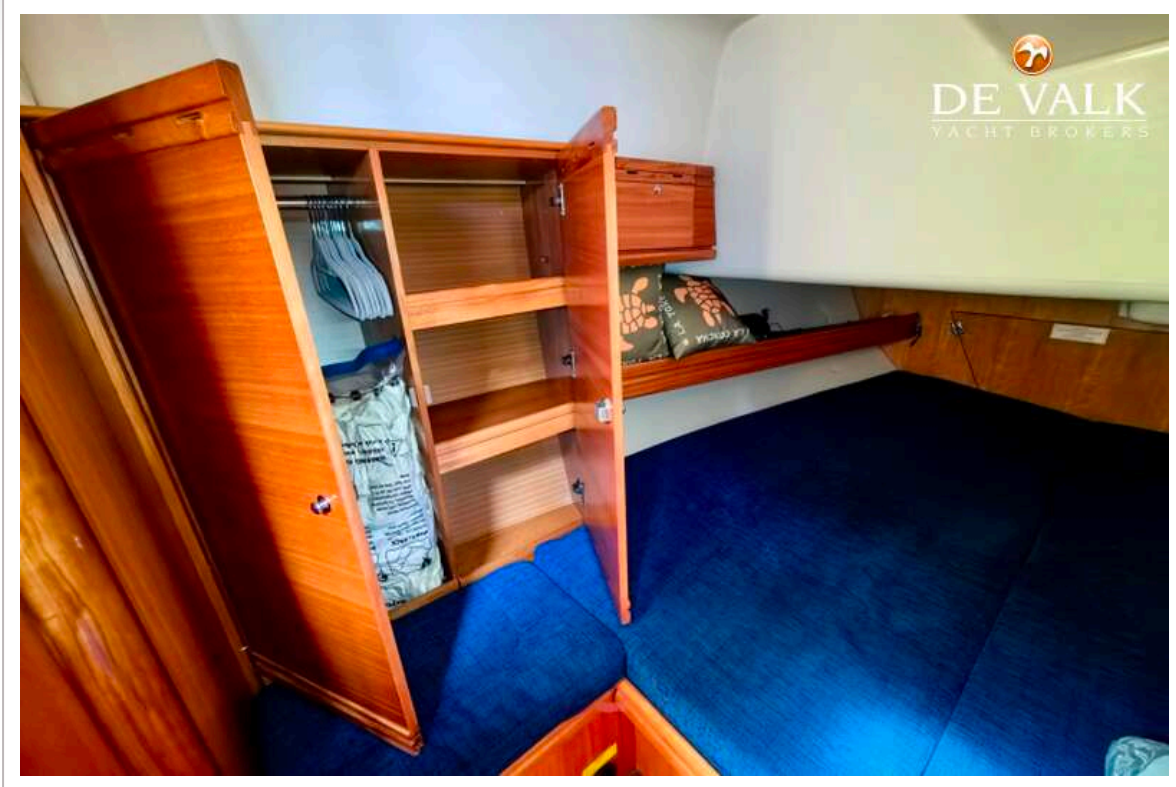
BAVARIA 44 VISION



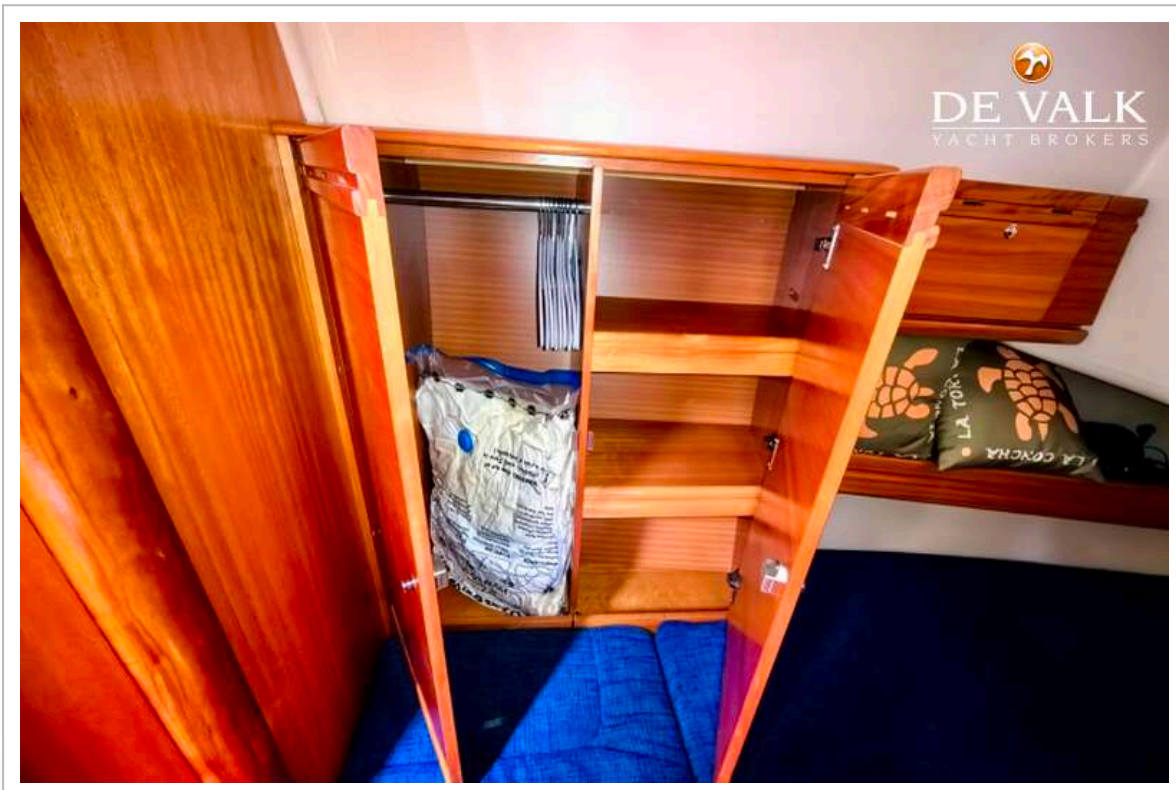
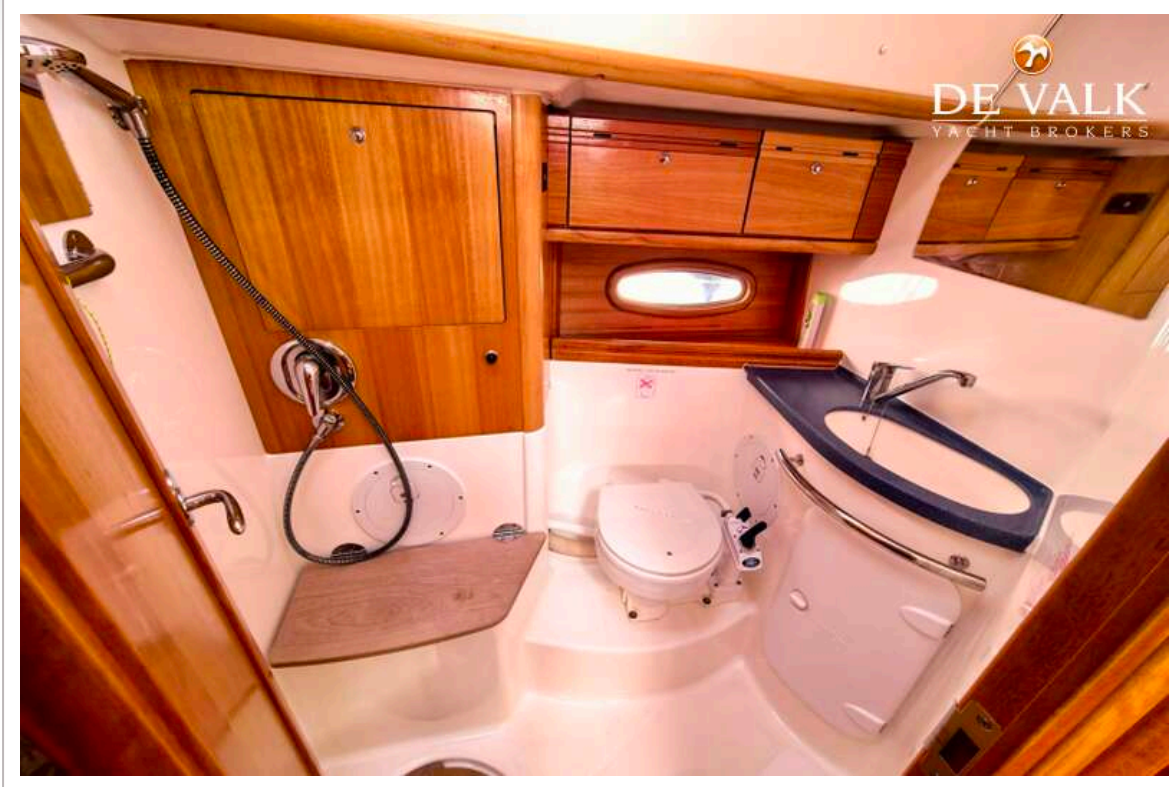
BAVARIA 44 VISION



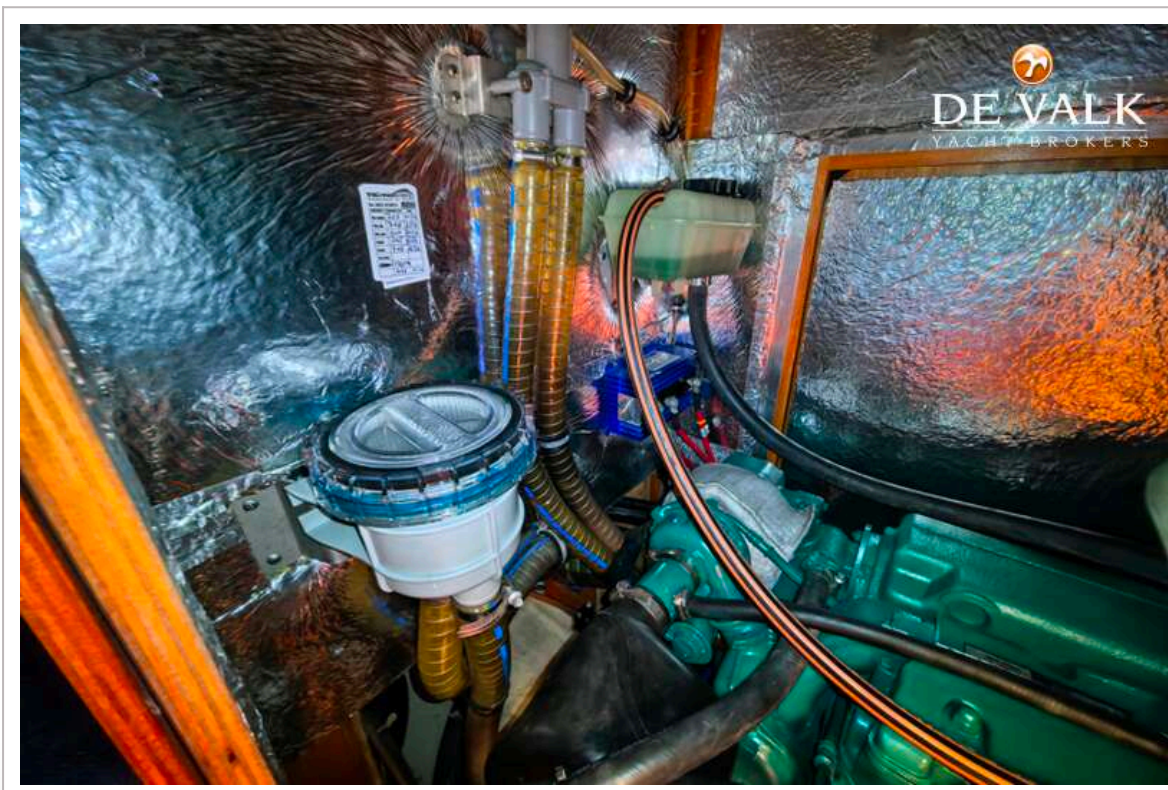
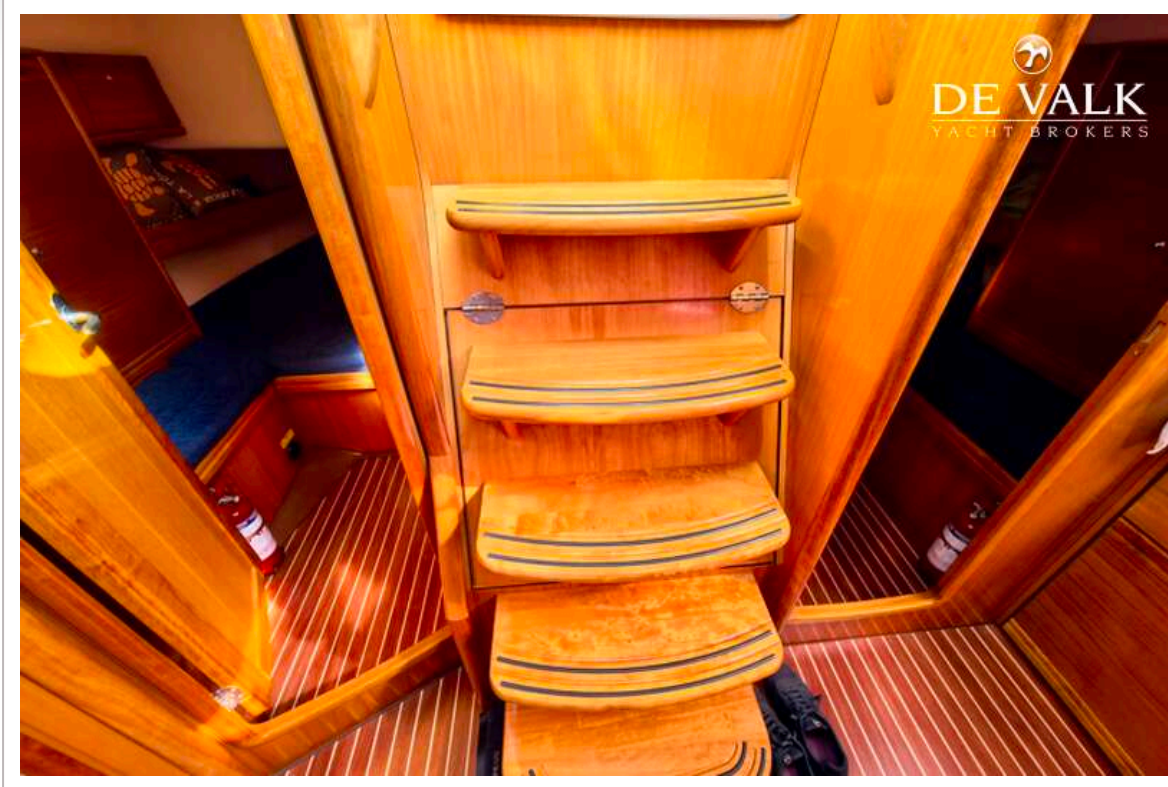
BAVARIA 44 VISION



BAVARIA 44 VISION



BAVARIA 44 VISION



BAVARIA 44 VISION

