



CANTIERI SARNICO MAXIM 45

BROKER'S COMMENTS

The Cantieri di Sarnico Maxim 45 perfectly blends Italian elegance with sporty performance. Designed by Nuvolari & Lenard, she offers sleek lines, spacious sun areas and a well-balanced layout with two comfortable cabins and two bathrooms. Powered by twin MAN diesels, she delivers fast and smooth cruising around 28 knots. A high-quality build with refined finishes, central engine room for stability, and excellent seakeeping, making her an ideal Med weekender or stylish day cruiser.

Raoul van der Werf

SPECIFICATIONS

Dimensions	14.85 x 4.12 x 1,10 / 0.00 (m)	Builder	Cantieri Sarnico
Built	1997	Cabins	2
Material	GRP	Berths	4
Engine(s)	2 x MAN D2866 diesel	Hp/Kw	2 x 600.00 (hp), 441.60 (kw)
Asking price	€ 125.000 (VAT Paid)	Lying	elsewhere / Not at sales office

CONTACT

Sales office	De Valk Antibes	Telephone	+33 492 91 0202
Address	2, Avenue de Verdun 06600 Antibes FR	E-mail	antibes@devalk.nl

DISCLAIMER

These particulars are given in good faith as supplied but cannot be guaranteed.



GENERAL

Model	CANTIERI SARNICO MAXIM 45
Type	motor yacht
LOA (m)	14,85
Beam (m)	4,12
Draft min (m)	1,10
Headroom (m)	2,00
Year built	1997
Builder	Cantieri Sarnico
Country	Italy
Designer	Nuvolari & Lenard
Displacement (t)	18
Hull material	GRP
Hull colour	white
Hull shape	deep-V
Deck material	GRP
Deck finish	non-skid moulded in
Cockpit deck finish	non-skid moulded in
Fuel tank (litre)	1800
Freshwater tank (litre)	600
Outside helm position	yes

ACCOMMODATION

Cabins	2
Berths	4
Floor	anti-slip
Open cockpit	yes
Heating	yes
Air-conditioning	reverse cycle airco
Navigation center	yes
Aft Cabin	yes



Galley	yes
Sink	yes
Cooker	electric 2 burners
Fridge	yes
Freezer	yes
Hot water system	yes
Water pressure system	electrical
Hot water tap	yes
Owners cabin	double bed
Bed length (m)	2
Wardrobe	drawers and shelves
Bathroom	en suite
Toilet	en suite
Toilet system	electric
Shower	en suite
Guest cabin 1	twin single
Bed length (m)	2
Wardrobe	drawers and shelves
Bathroom	en suite
Toilet	en suite
Toilet system	electric
Shower	en suite

MACHINERY

No of engines	2
Make	MAN
Type	D2866
HP	600
kW	441.60
Fuel	diesel
Maximum speed (kn)	35



Cruising speed (kn)	28
Engine hours	670
Engine controls	bowden cable
Batteries	yes
Start battery	yes
Service battery	yes
Battery charger	yes
Shorepower	with cable
Trimtabs	yes

NAVIGATION

Compass	yes
Depth sounder	yes
VHF	yes
Plotter/GPS	Garmin

EQUIPMENT

Cockpit cover	yes
Bimini	yes
Cockpit cushions	yes
Cockpit table	yes
Gangway	yes
Deck shower	yes
Anchor	yes
Anchor chain	yes
Windlass	yes
Horn	yes
Fenders	yes
Mooring lines	yes
TV	yes
Radio	yes













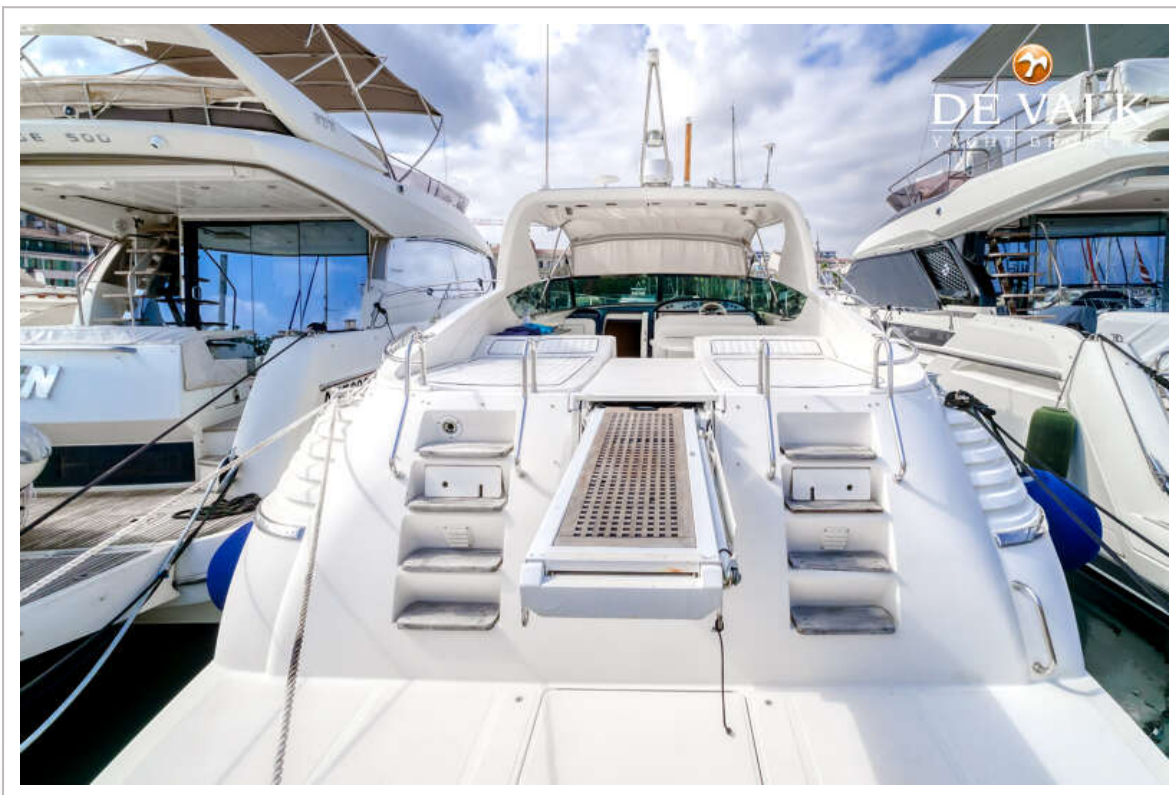
CANTIERI SARNICO MAXIM 45





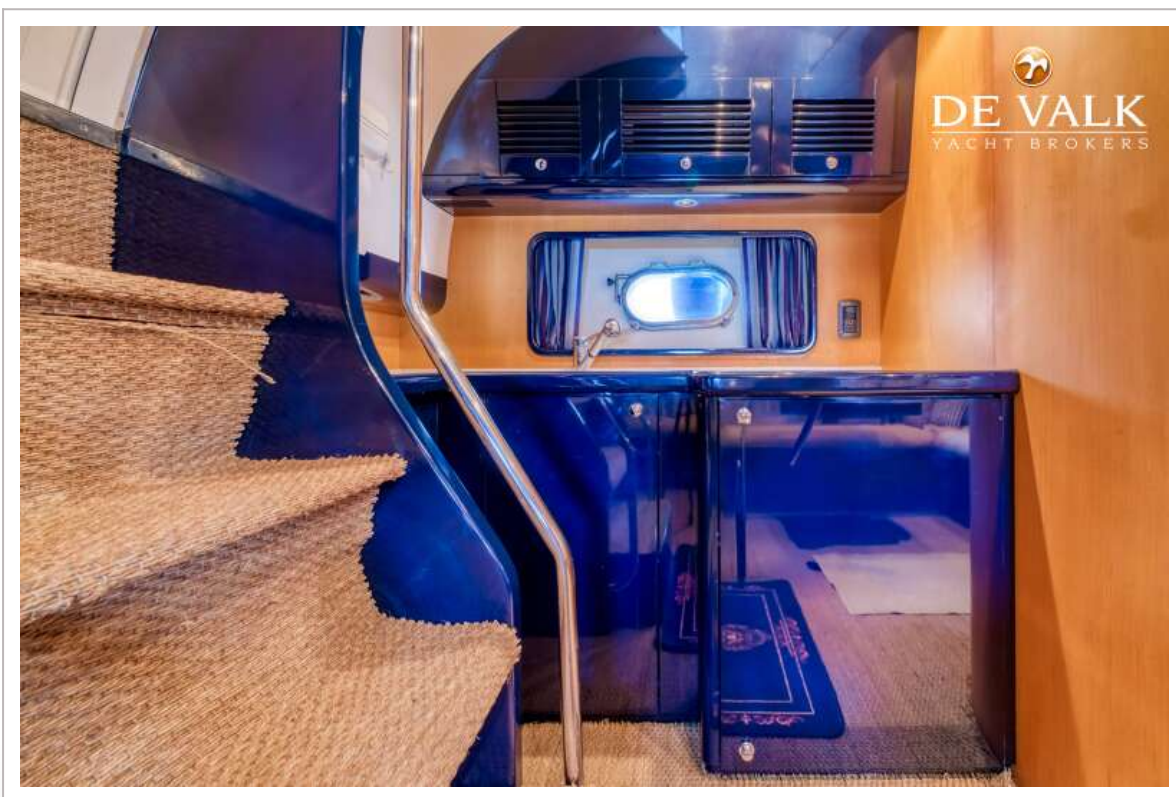
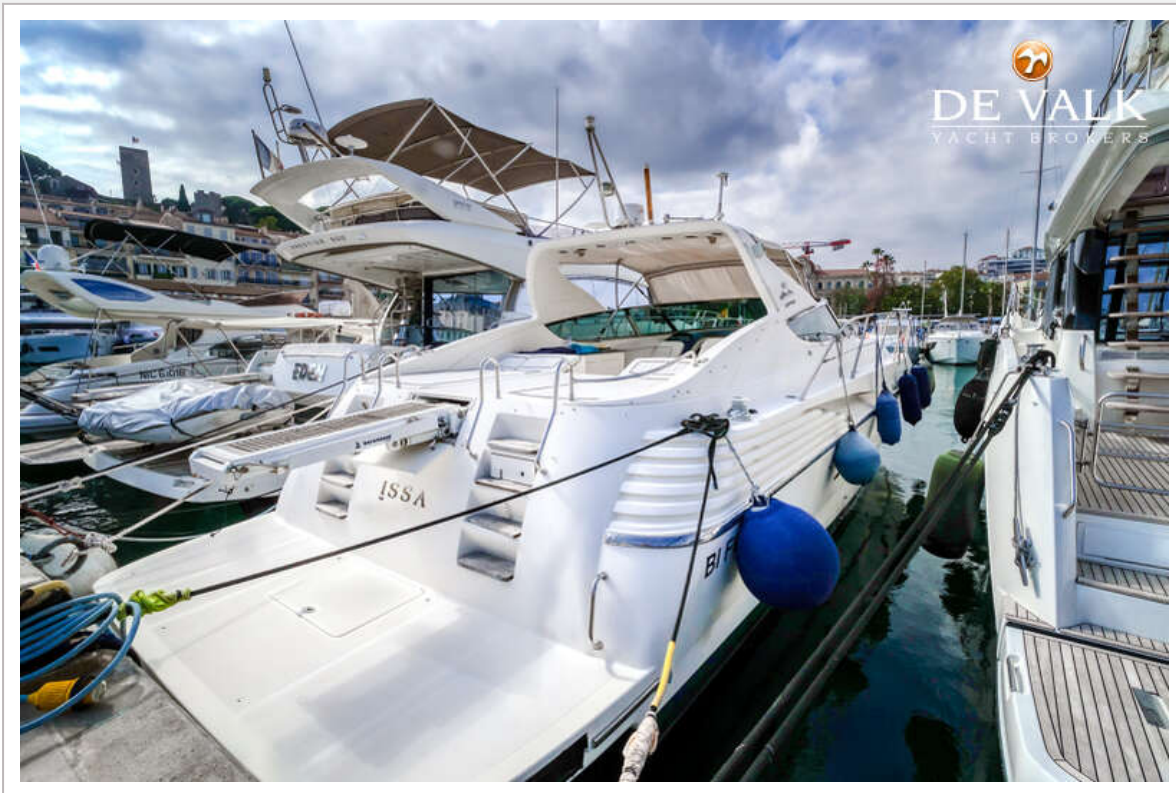
CANTIERI SARNICO MAXIM 45



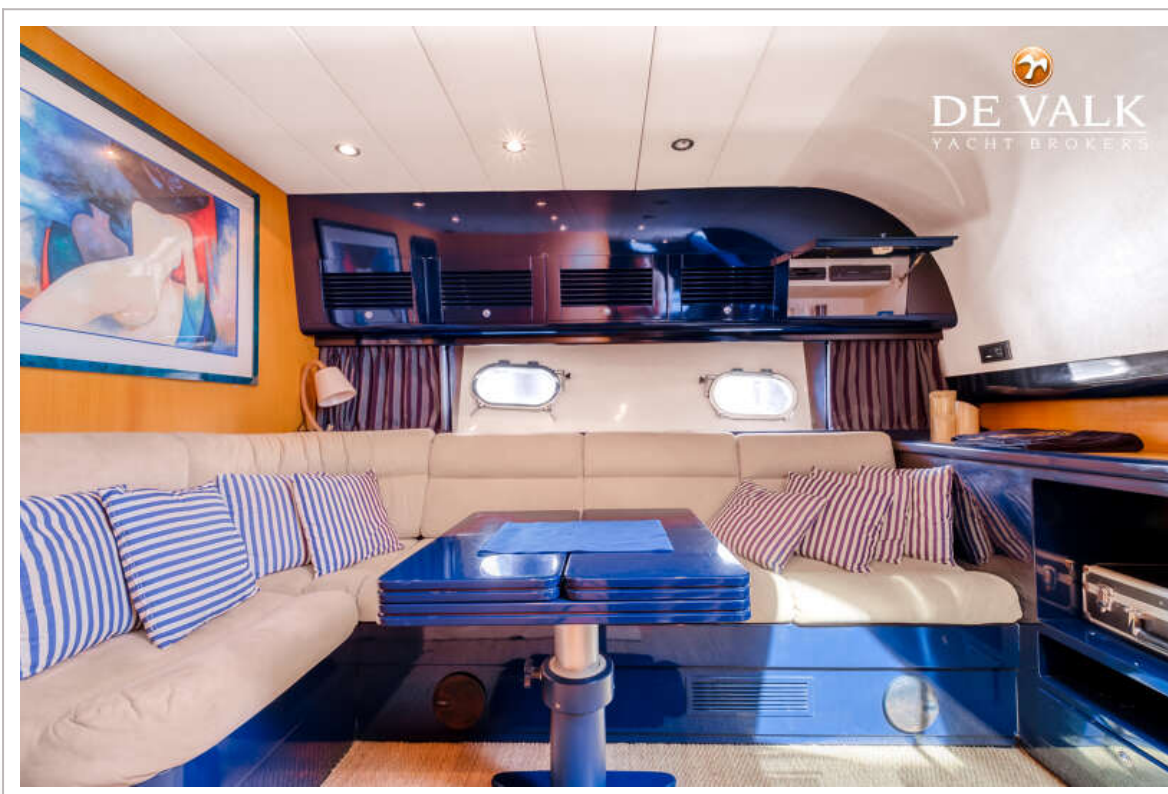
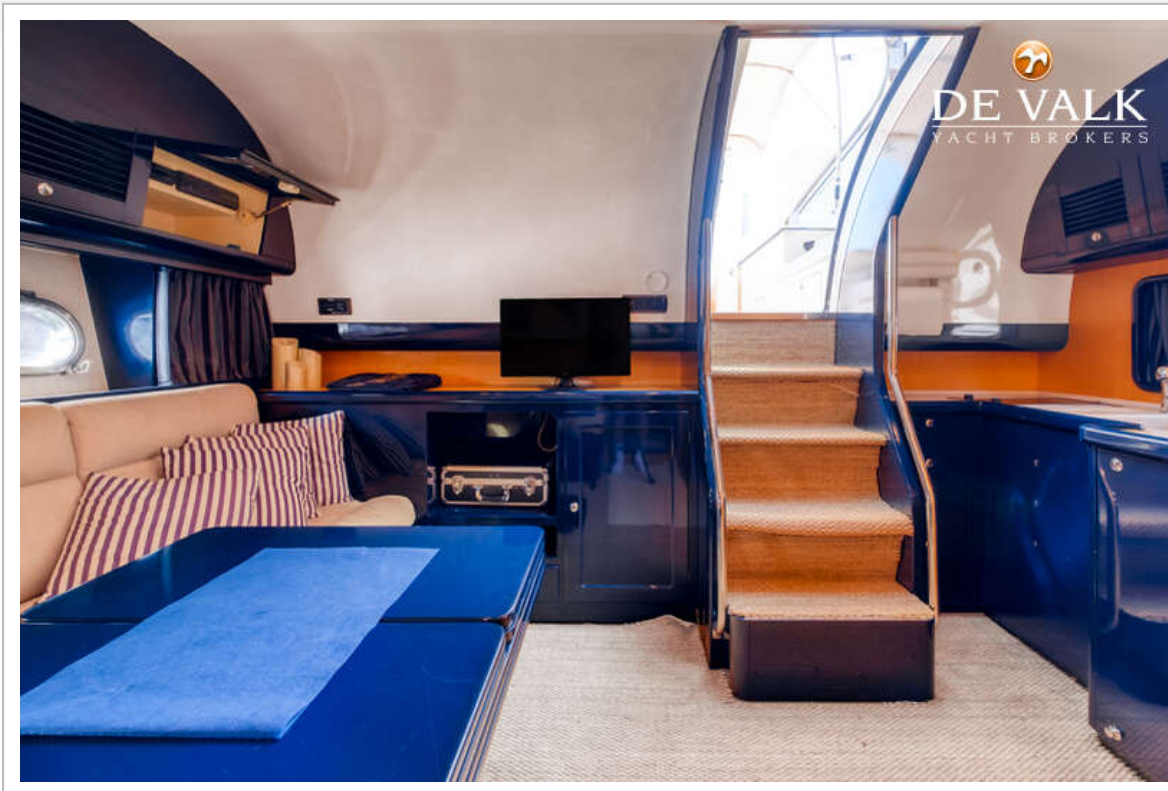


CANTIERI SARNICO MAXIM 45





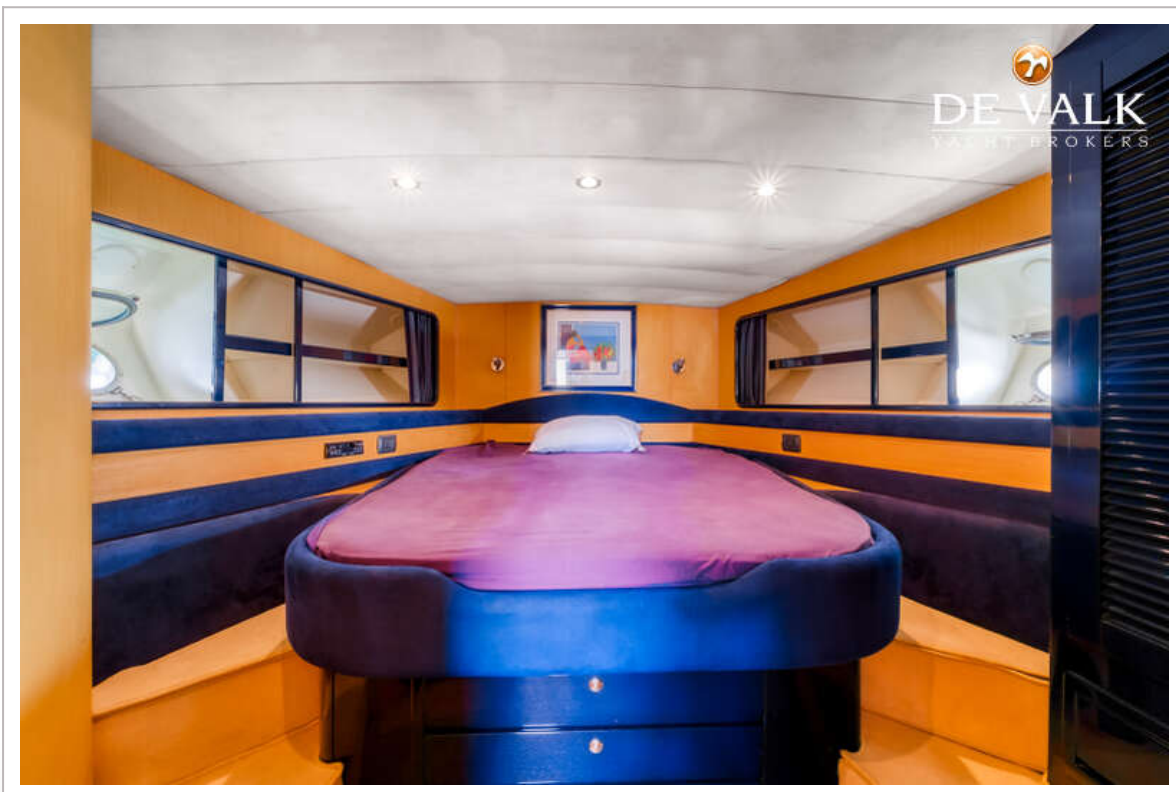
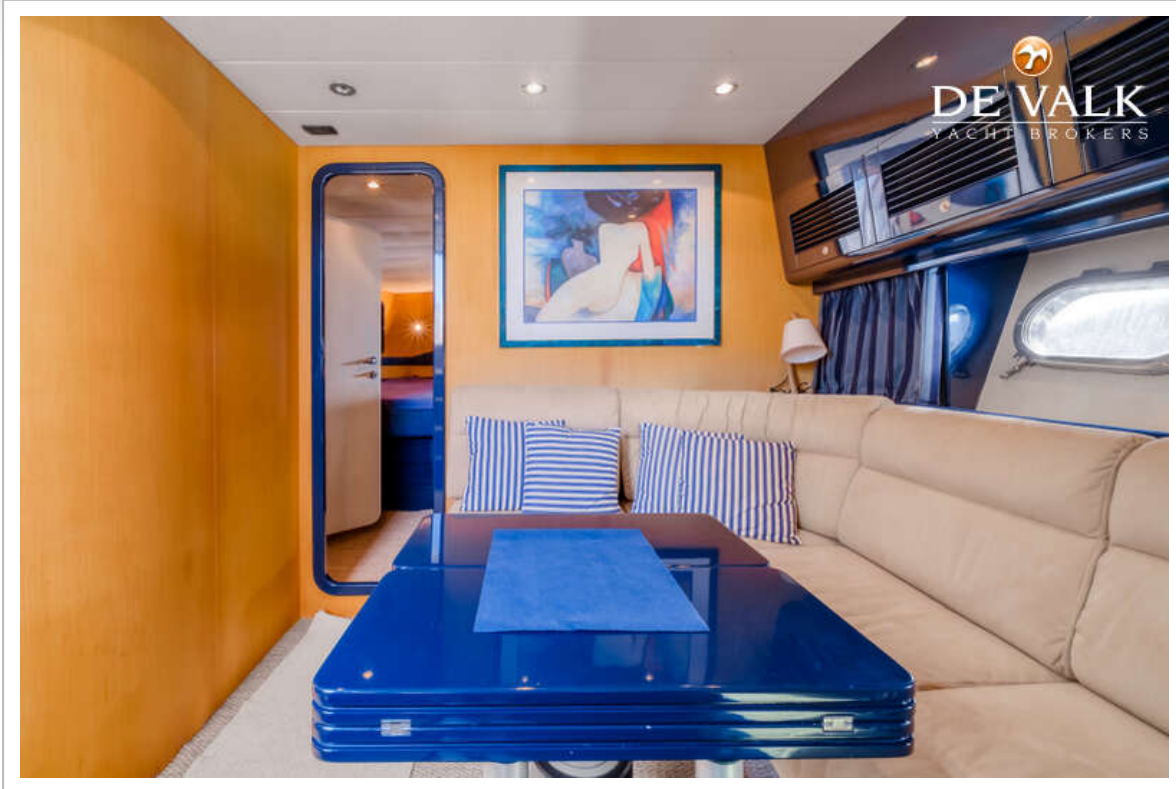
CANTIERI SARNICO MAXIM 45

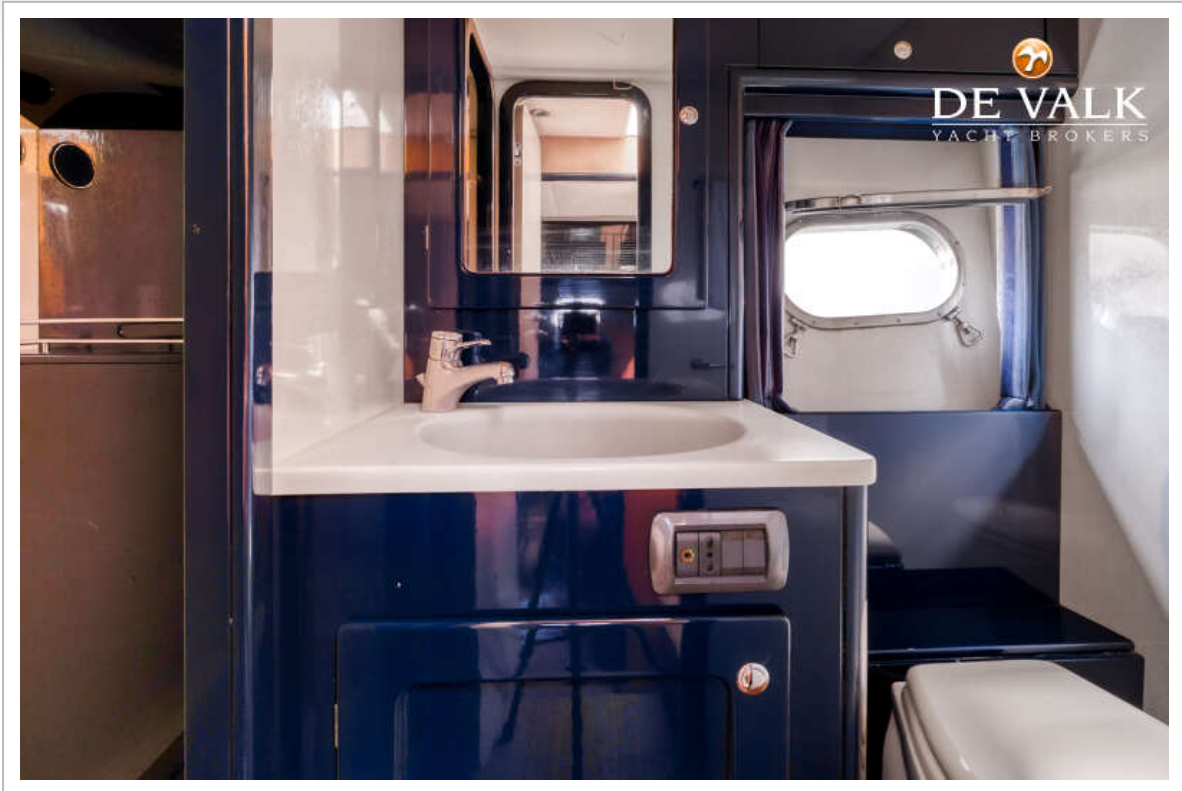


CANTIERI SARNICO MAXIM 45



CANTIERI SARNICO MAXIM 45





CANTIERI SARNICO MAXIM 45

