



DE VALK
YACHT BROKERS



CUSTOM BUILT EXPLORER



DE VALK
YACHT BROKERS

BROKER'S COMMENTS

Terschelling is a 40-metre former Dutch buoy-laying vessel that has recently undergone a comprehensive conversion, completed under class, into an exclusive Arctic expedition yacht. Combining robust commercial-grade construction with a high standard of luxury, she accommodates up to 12 guests in six comfortable cabins. Ideally suited for luxury expeditions, private use or charter operations. The existing business, including its operational activities and commercial opportunities, may also be acquired, offering a unique turnkey expedition enterprise with immediate earning potential.

Hans Visser

SPECIFICATIONS

Dimensions	37.92 x 7.90 x 3.70 (m)	Builder	Zaanse scheepsbouw Maatschappij
Built	1963	Cabins	6
Material	Steel	Berths	12
Engine(s)	1 x Bolnes eight-cylinder diesel	Hp/Kw	467.00 (hp), 343.71 (kw)
Asking price	€ 1.200.000 (VAT Exempt)	Lying	elsewhere / Not at sales office

CONTACT

Sales office	De Valk Hindeloopen B.V.	Telephone	+31 514 52 40 00
Address	Oosterstrand 1 8713 JS Hindeloopen NL	E-mail	hindeloopen@devalk.nl

DISCLAIMER

These particulars are given in good faith as supplied but cannot be guaranteed.



CUSTOM BUILT EXPLORER

GENERAL

Model	CUSTOM BUILT EXPLORER
Type	motor yacht
LOA (m)	37,92
Beam (m)	7,90
Draft (m)	3,70
Year built	1963
Builder	Zaanse scheepsbouw Maatschappij
Country	The Netherlands
Displacement (t)	238
Ballast (tonnes)	2 x 6t 2x 5.78t
Gross tonnage	238
Net tonnage	71
CE norm	NA
Hull material	steel
Hull colour	black
Hull shape	round-bilged
Superstructure material	steel
Deck material	steel
Deck finish	paint And teak
Superstructure deck finish	paint
Window frame	aluminium And brass
Window material	tempered glass
Insulation	Insulation comprises 10 mm foam board + layer of SuperFOIL
Fuel tank (litre)	Total capacity 50,420 ltr. in 4 tanks
Fuel daytank (litre)	ME 500 ltr. generator daytank 250 ltr.
Level indicator (daytank)	Both with Sightglass
Freshwater tank (litre)	3 tanks total capacity 34.47t
Wheel steering	hydraulic
Inside helm position	yes
Emergency tiller	yes



CUSTOM BUILT EXPLORER

ACCOMMODATION

Cabins	6
Berths	12
Crew cabin	4x Crew cabin + 1x Guide cabin
Crew berths	7
Interior	Traditioneel
Aft deck	yes
Pilot house	yes
Deck saloon	yes
Saloon	yes
Headroom saloon (m)	2 mtr
Heating	Type ?????
Navigation center	yes
Chart table	yes
Galley	fully stainless steel galley
Countertop	stainless steel
Sink	stainless steel
Cooker	induction Buffalo CU558 4 Zone Hob
Fridge	Beko 252 ltr.
Freezer	Beko 250 ltr.
Hot water system	2x boiler totaal 600 ltr.
Water pressure system	yes
Guest cabin 1	twin single totaal 6 hutten voor gasten
Bed length (m)	2 mtr.
Wardrobe	yes
Bathroom	en suite
Toilet	yes
Toilet system	vacuum
Wash basin	yes
Shower	yes
Crew cabin(s)	5



CUSTOM BUILT EXPLORER

Toilet (crew)	2x
Toilet system	vacuum
Wash basin	yes
Shower (crew)	1x
Washing machine	Hoover
Dryer	Hoover

MACHINERY

No of engines	1
Make	Bolnes
Type	Eight-cylinder
HP	467
kW	343.71
Fuel	diesel
Cruising speed (kn)	9
Engine cooling system	freshwater heat exchanger
Drive	shaft
Engine controls	mechanical
Gearbox	hydraulic
Exhaust	watercooled
Propeller type	fixed
Propeller blades	3
Propeller shaft material	stainless steel
Shaft lubrication	oilbath
Electric bilge pump	2 pickups in ER and accommodations
Electrical installation	12 / 24 / 220 and 360
Generator	dry exhaust Caterpillar 3056T 50 Hz - 220V
Generator 2	dry exhaust Kubota V3800 50Hz - 360V
Start battery	yes
Generator battery	Gen 1 - 2 x 100ah batteries Gen 2 - 1 x 100ah batteries
Battery charger	Victron Skylla-TG 24v 30Amp G.M.D.S.S.



CUSTOM BUILT EXPLORER

Inverter yes

NAVIGATION

Compass 1x

Compass on flybridge 1x Arkas Copenhagen

Electric compass 1x Furuno Sc70 Satellite Compass with Furuno SC-703 antenna unit

Depth sounder Kodon CVS-1410

VHF Icom-GM600 with Icom PS-310 DC-DC converter

Autopilot Havant Navtron Hants

Rudder angle indicator Svendborg Skibsværft electric Helmindicator

GPS Furuno GP-39

Navtex JRC NCR-300A

AIS transponder Furuno FA-1701 with NMEA 2000 and Furuno FA-170 display

Navigation lights yes

Searchlight yes

EQUIPMENT

Anchor 2x

Anchor chain 2x 180 mtr.

Windlass hydraulic 2x

Dinghy Inmar boats

Outboard Parsun 60 hp

Deck crane Hydraulic crane 5 t. and 1 t.

Sea railing yes

Railing side opening gates Starboard with small manual crane

Life raft 2x Survitec ESR

Life raft (pers) 2x 25

Lifebuoy 2x PainsWessex Manoverboard

Clearview window Two

Horn yes



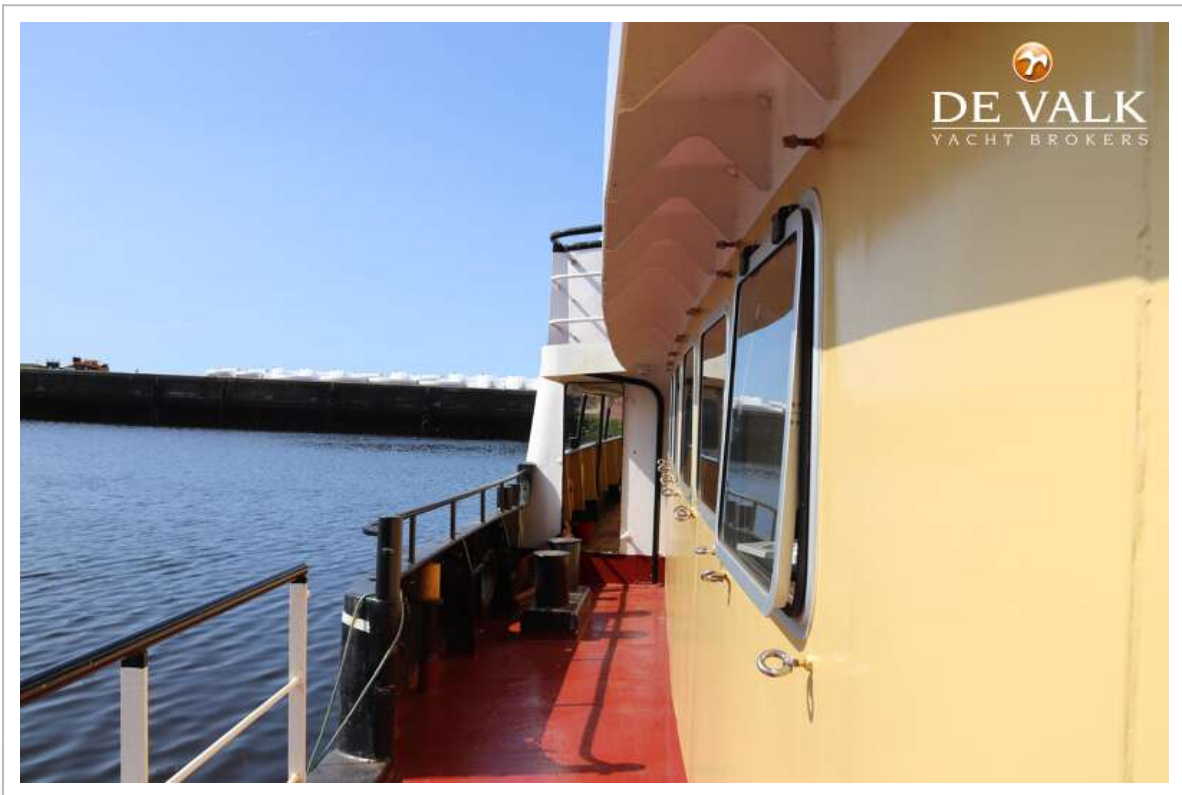
Radar reflector	yes
Mooring lines	yes
Spare parts	yes
Tools	yes
Satellite	Starlink
Extra info	Mcmurdo Smartfind S5A AIS SART



CUSTOM BUILT EXPLORER



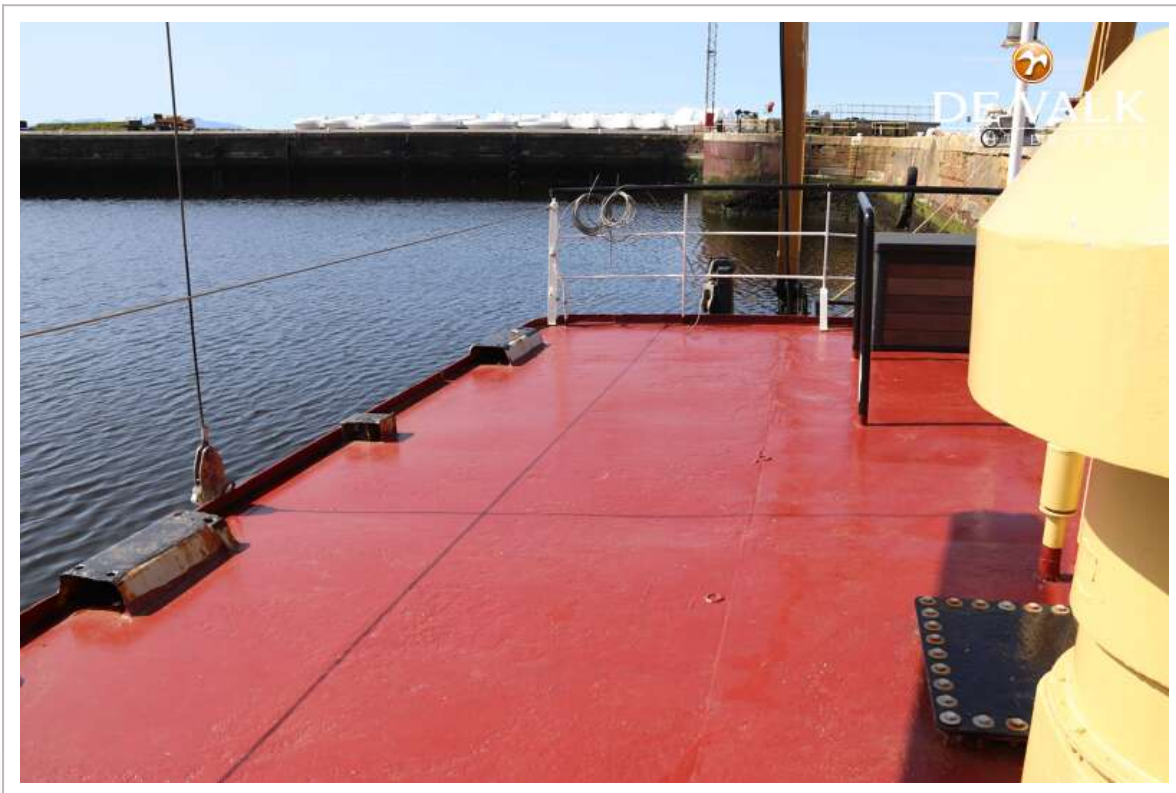
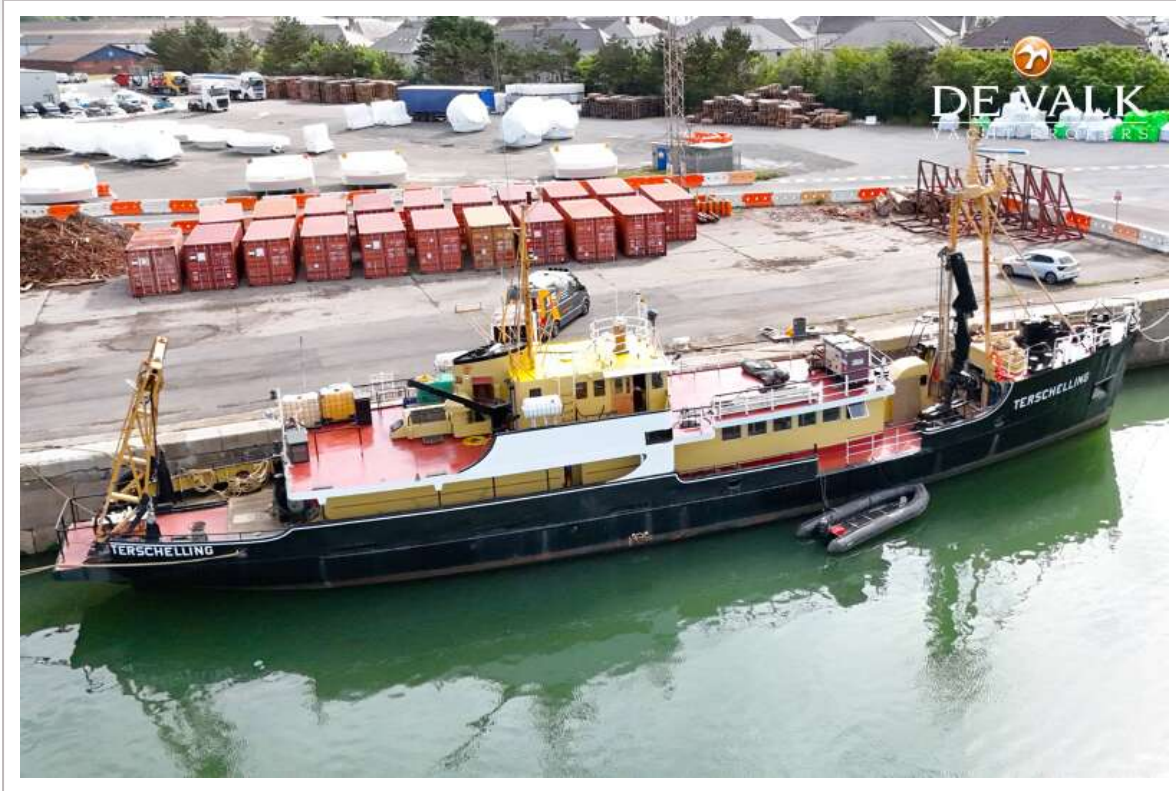
CUSTOM BUILT EXPLORER



CUSTOM BUILT EXPLORER



CUSTOM BUILT EXPLORER



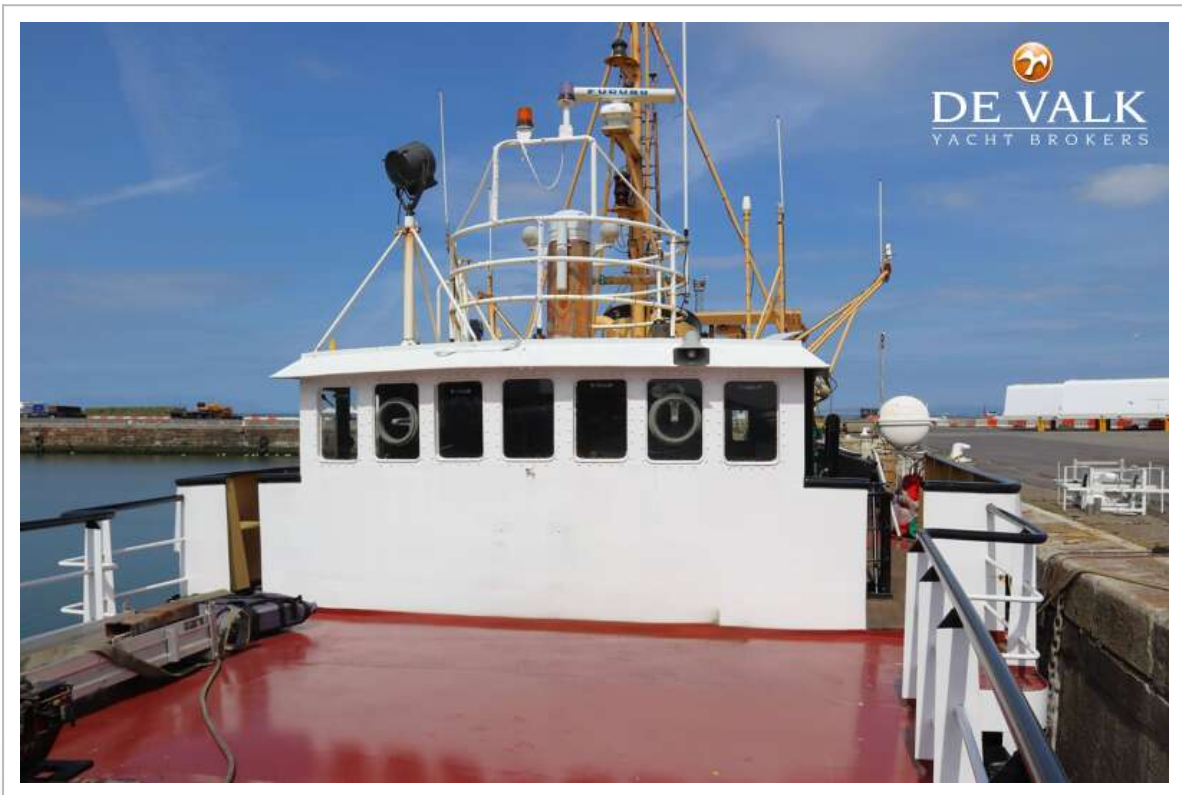
CUSTOM BUILT EXPLORER



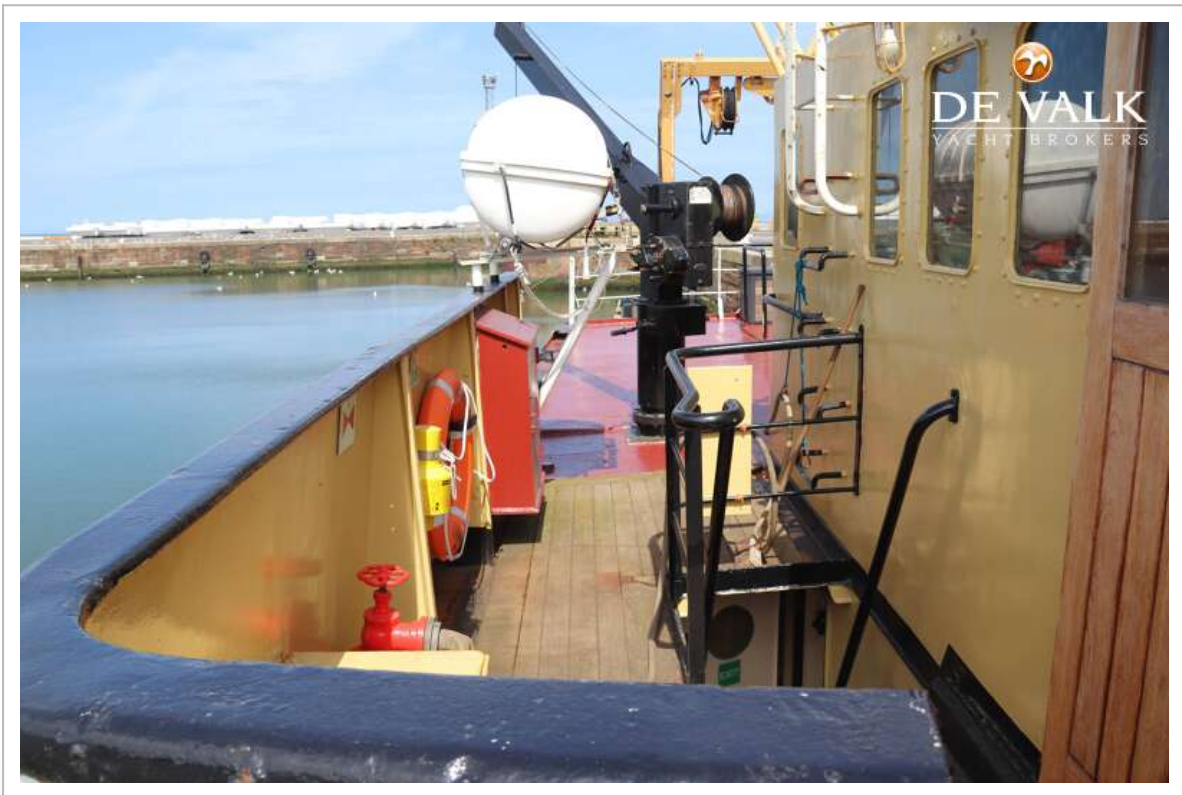
CUSTOM BUILT EXPLORER



CUSTOM BUILT EXPLORER



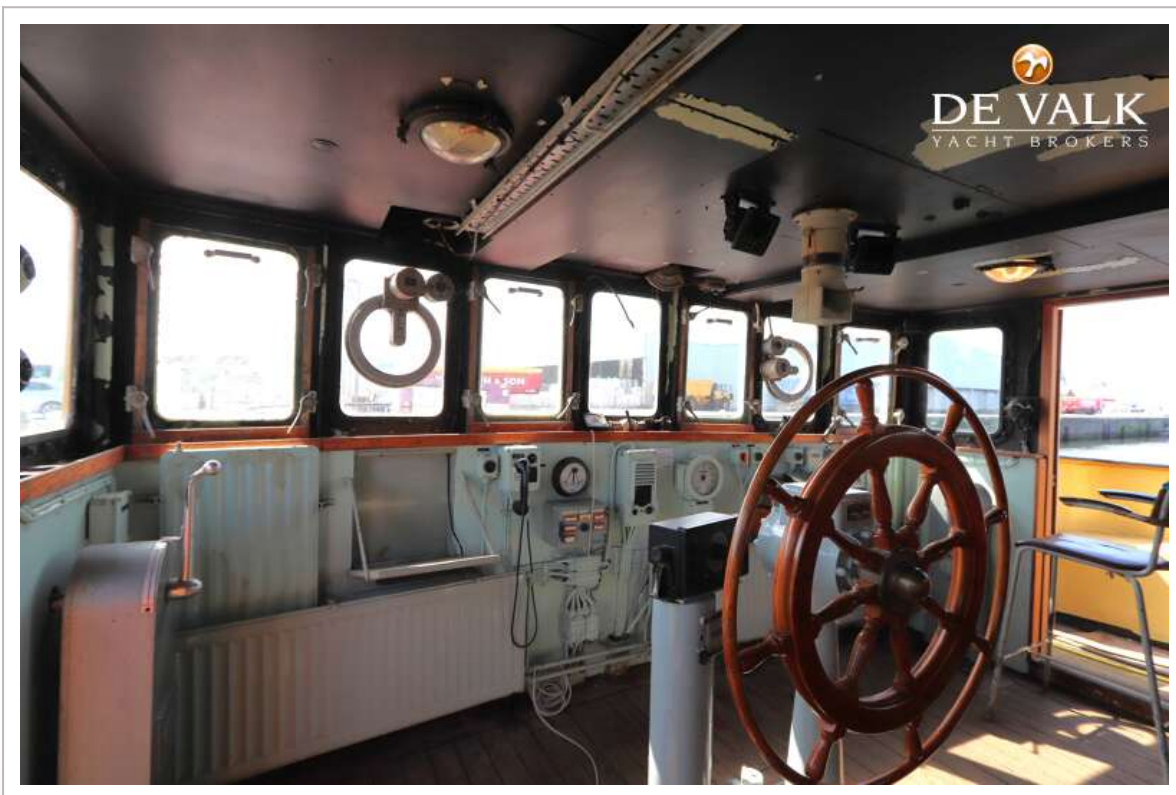
CUSTOM BUILT EXPLORER



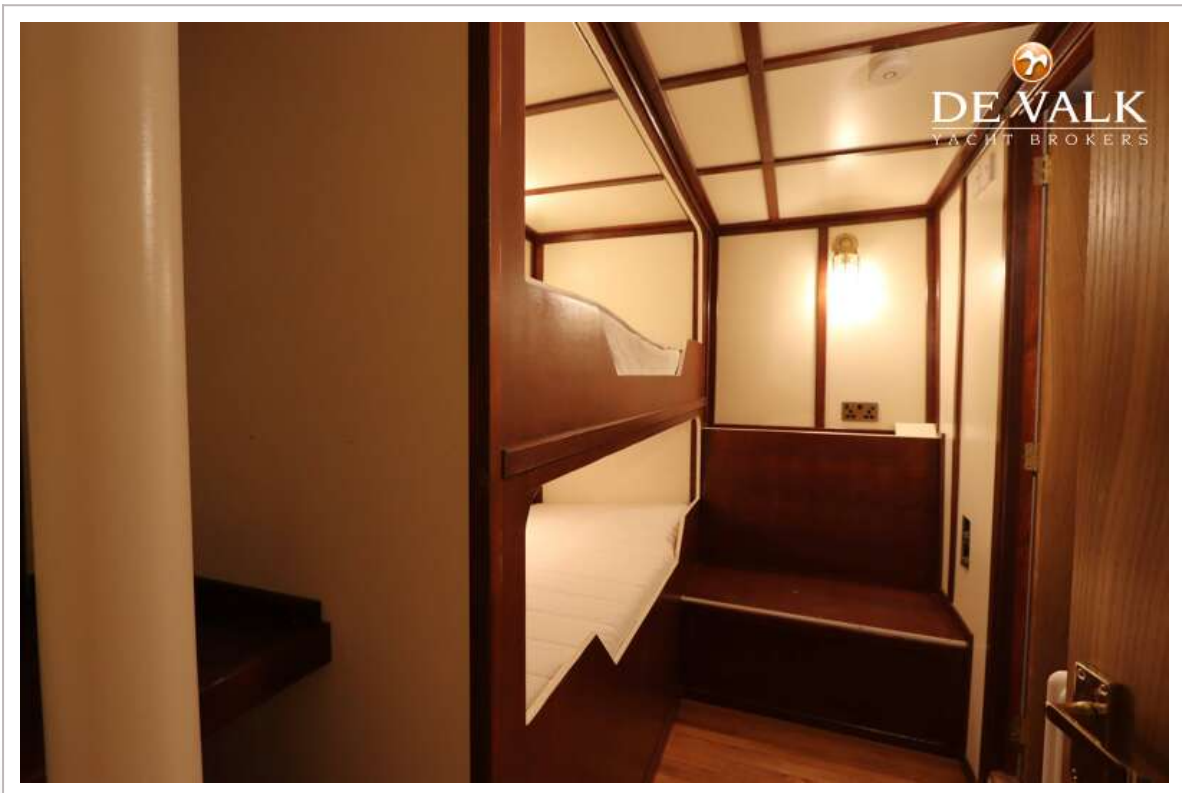
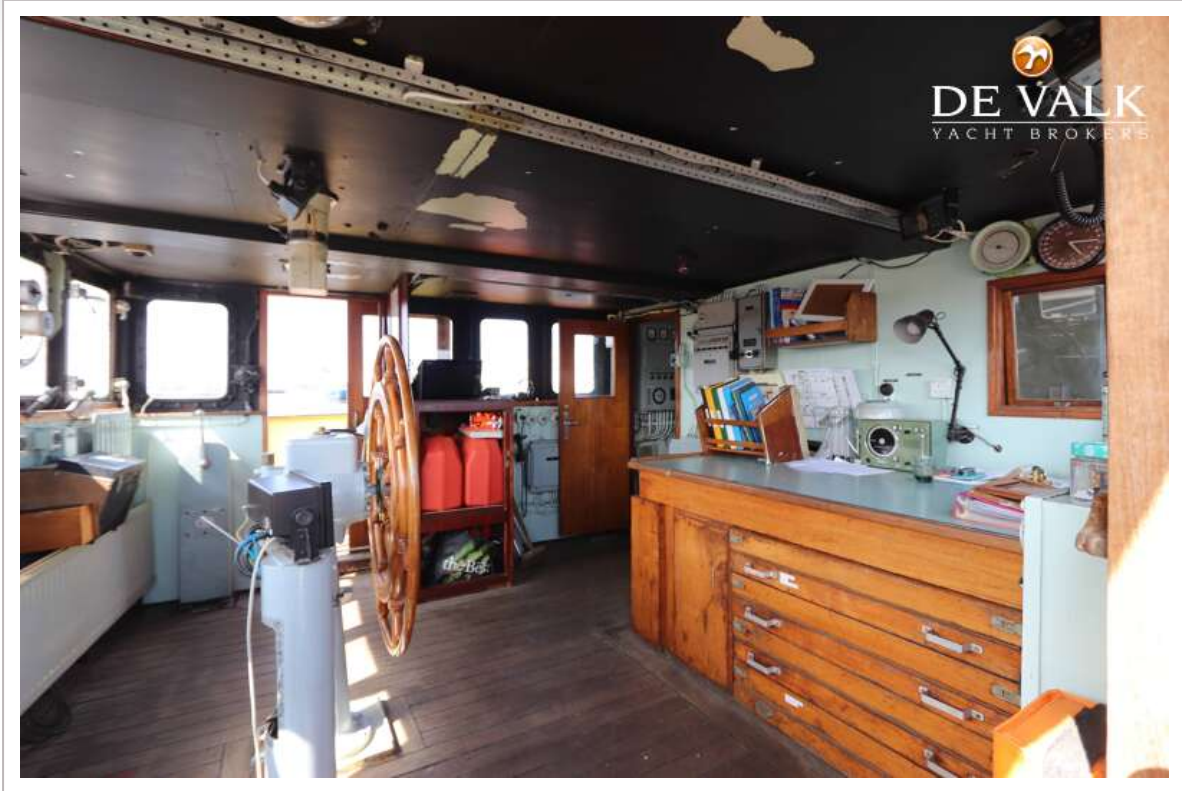
CUSTOM BUILT EXPLORER



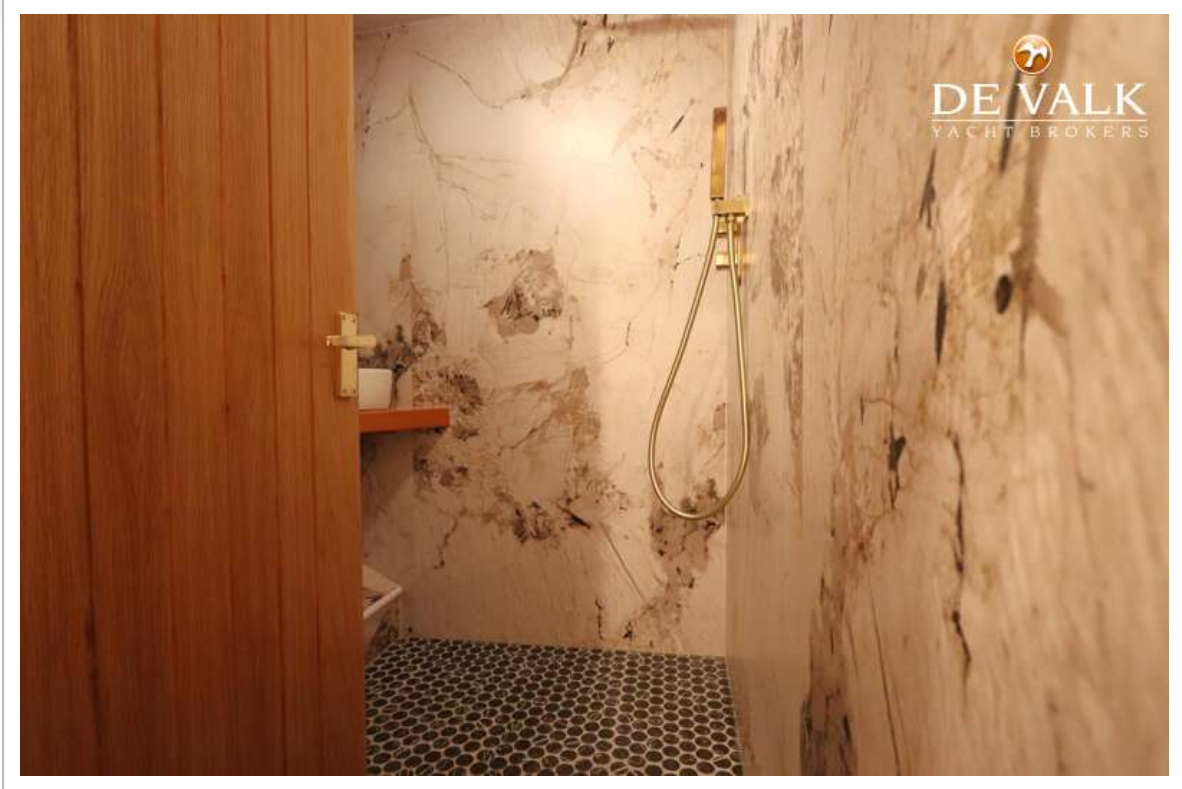
CUSTOM BUILT EXPLORER



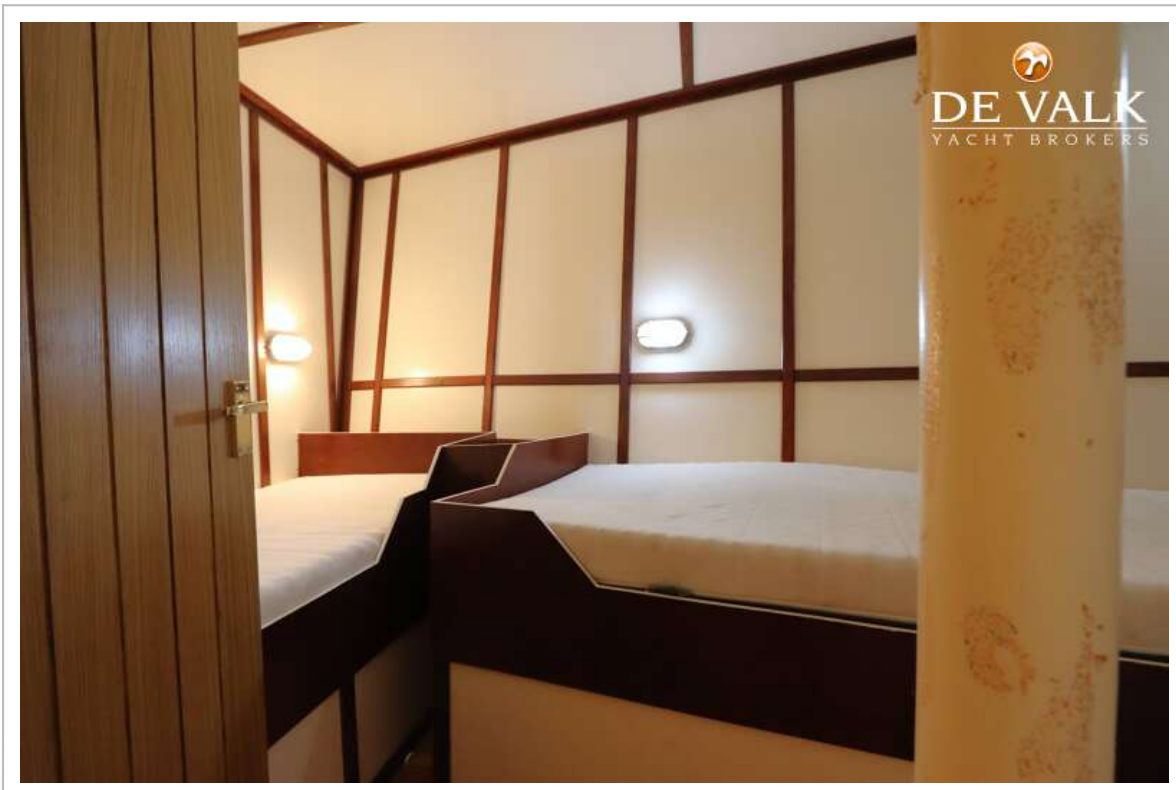
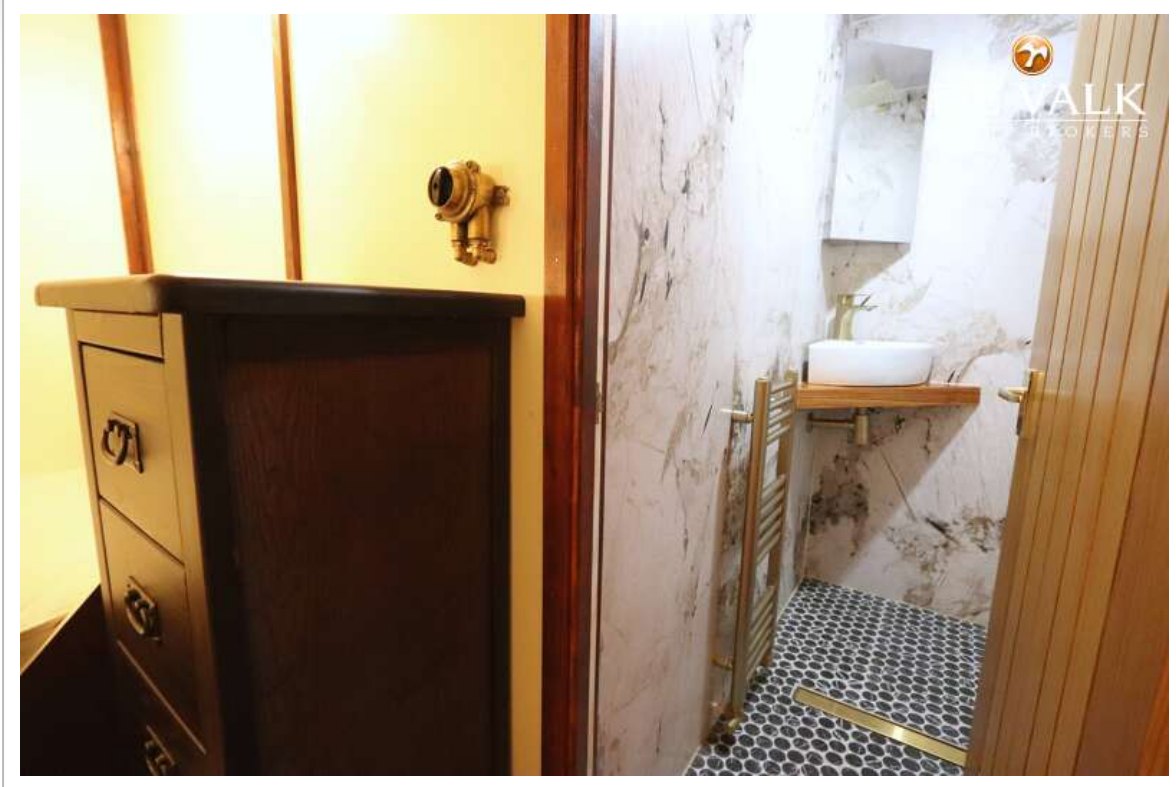
CUSTOM BUILT EXPLORER



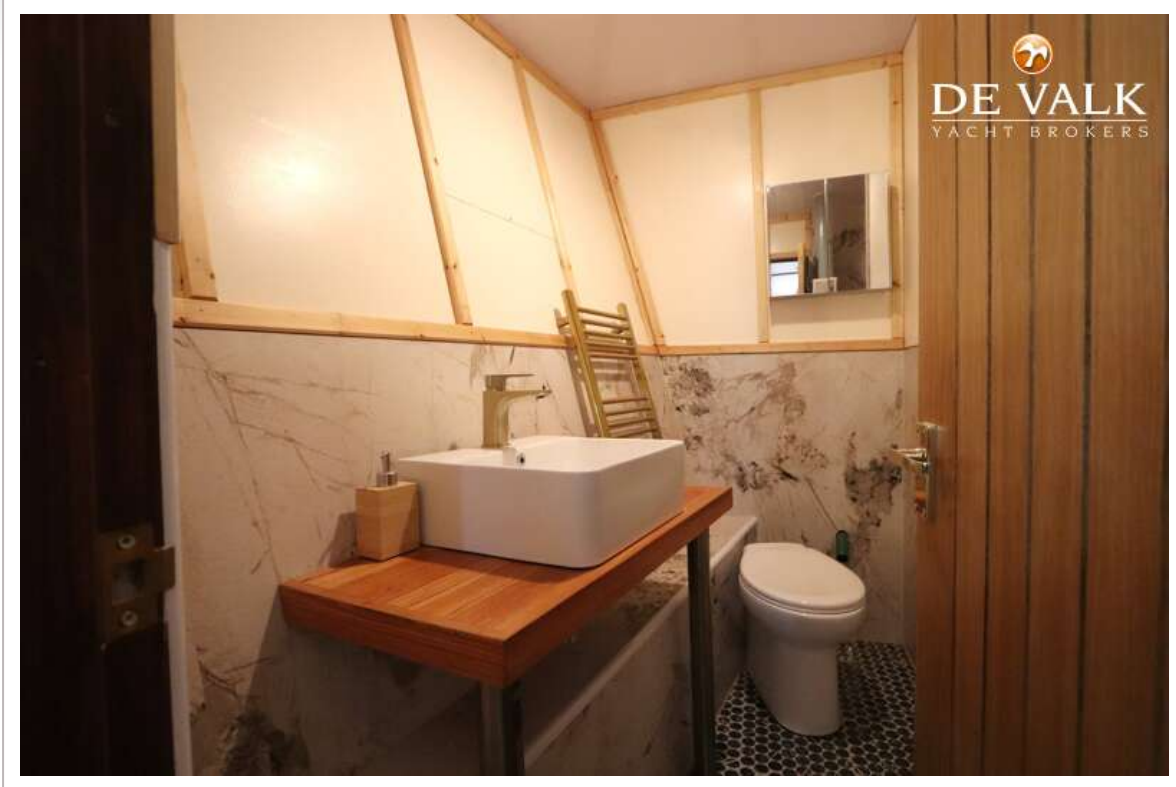
CUSTOM BUILT EXPLORER



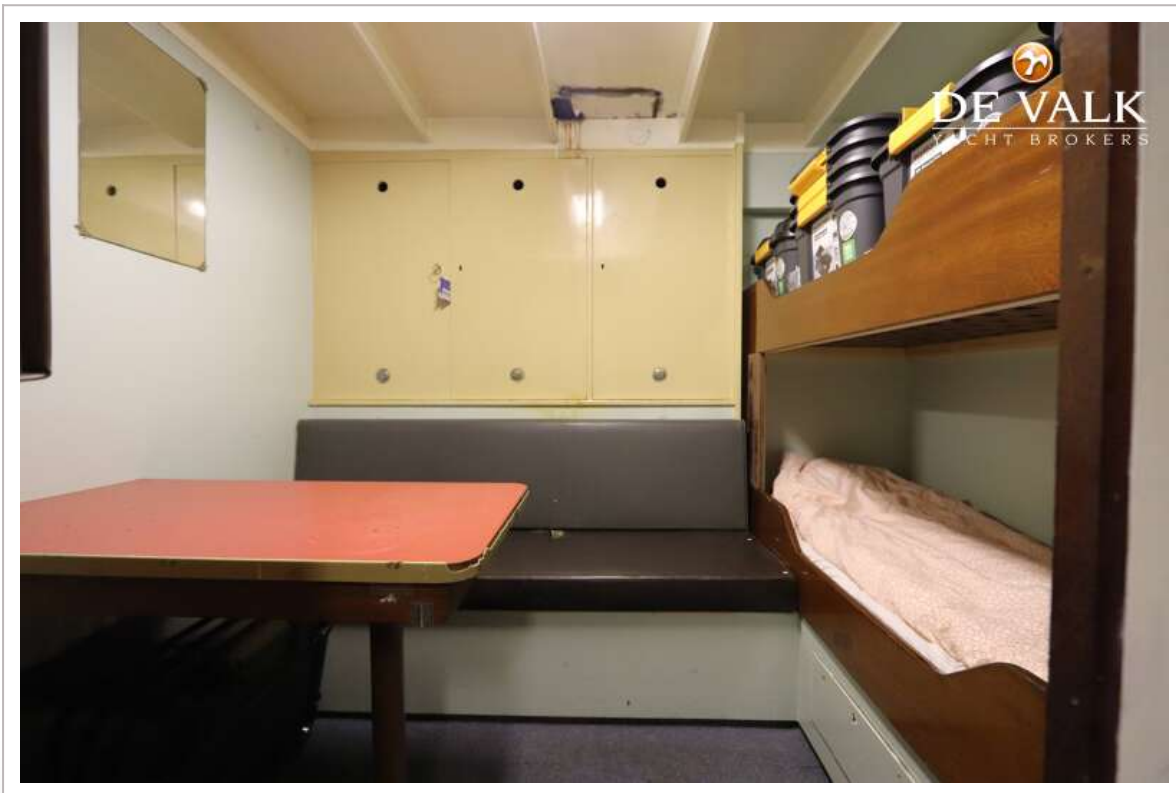
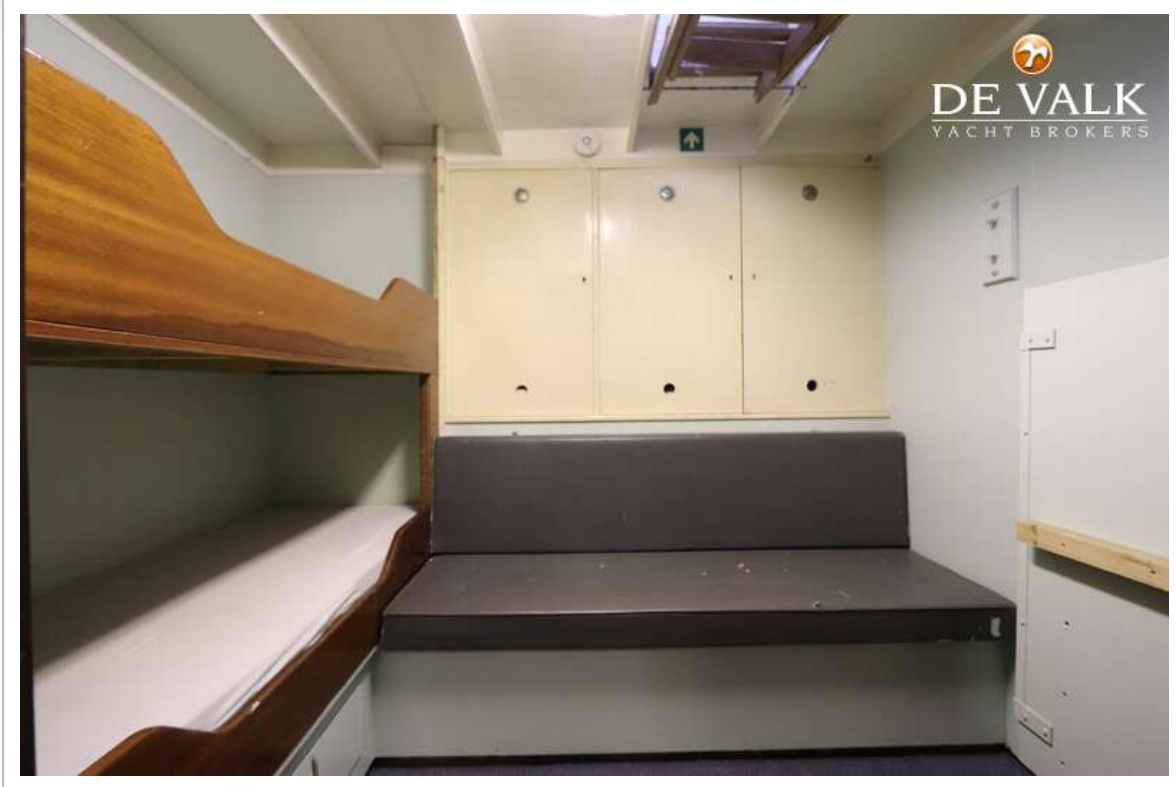
CUSTOM BUILT EXPLORER



CUSTOM BUILT EXPLORER



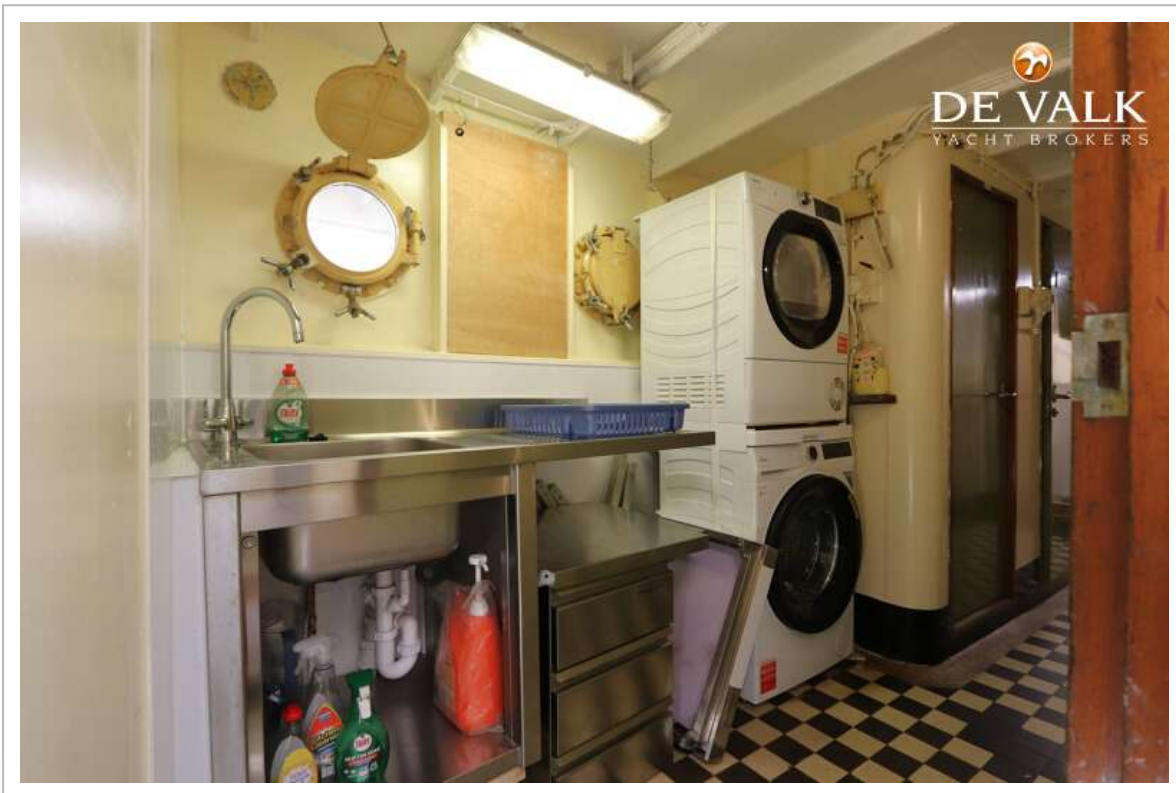
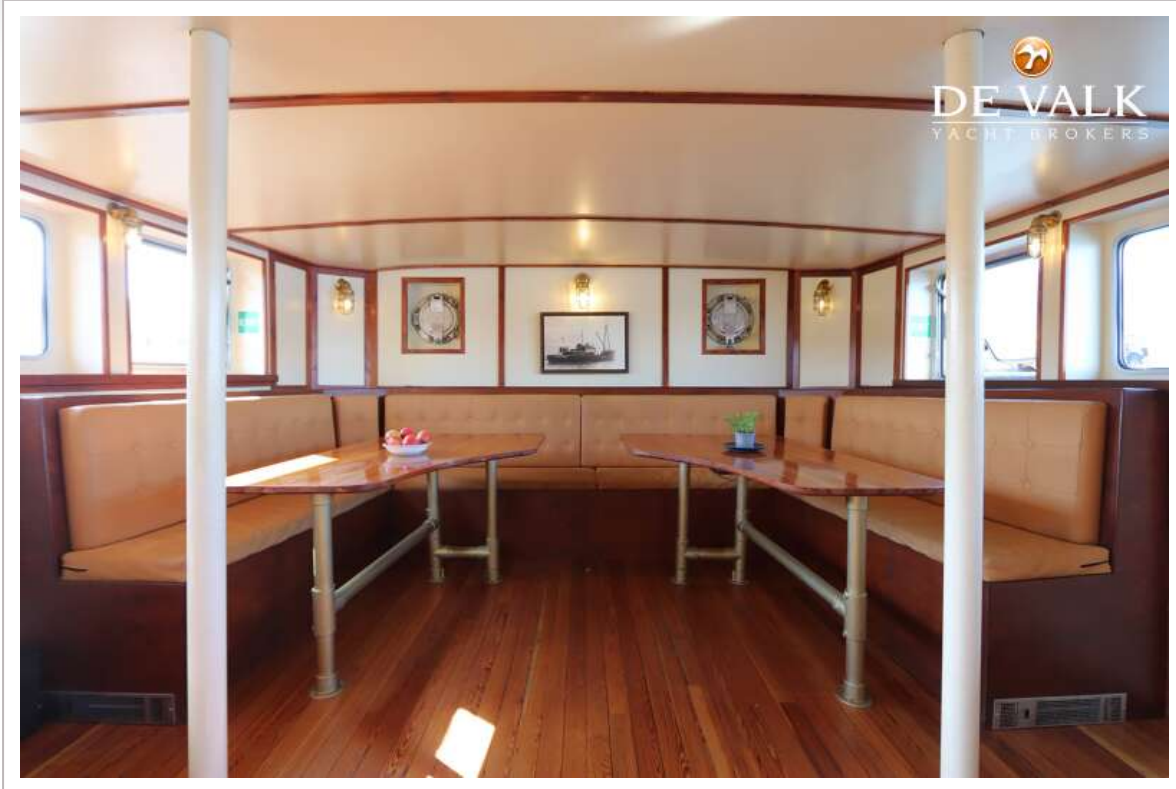
CUSTOM BUILT EXPLORER



CUSTOM BUILT EXPLORER



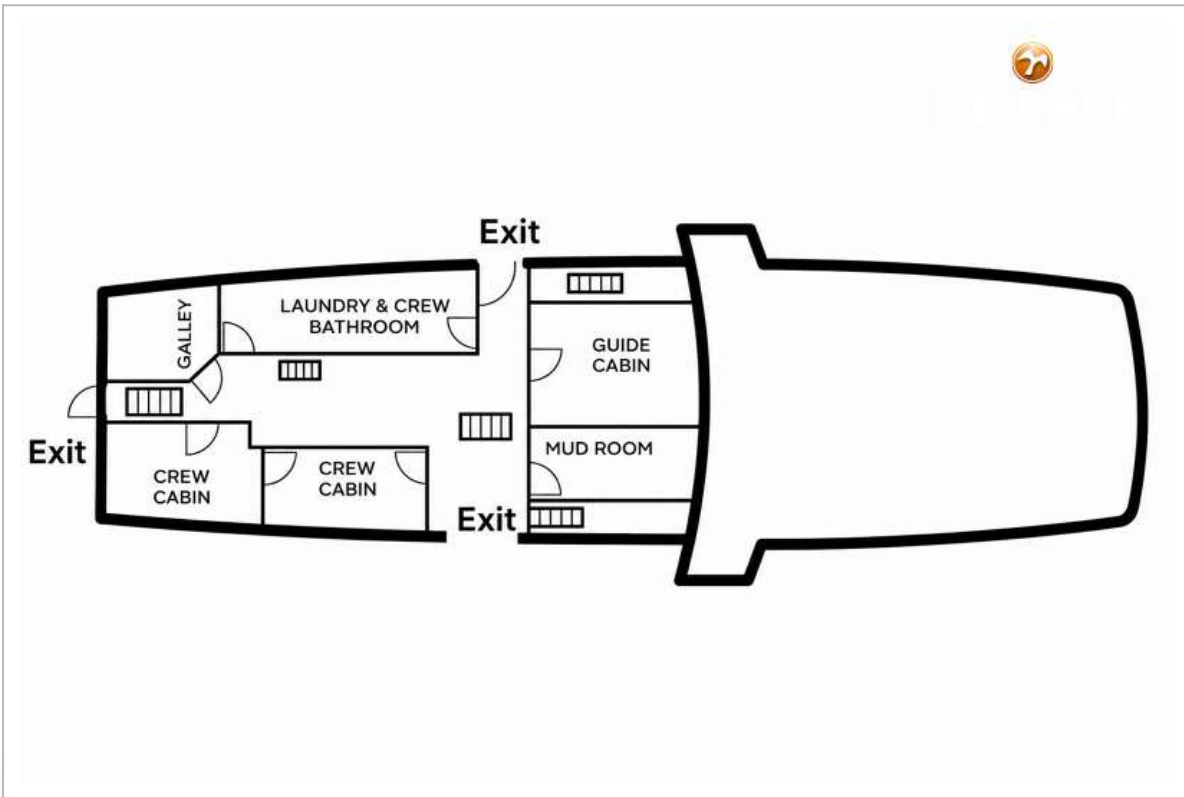
CUSTOM BUILT EXPLORER



CUSTOM BUILT EXPLORER



CUSTOM BUILT EXPLORER



CUSTOM BUILT EXPLORER

