



FAIRLINE TARGA 47 GRAN TURISMO

FAIRLINE TARGA 47 GRAN TURISMO

BROKER'S COMMENTS

Step aboard the Fairline Targa 47 Gran Turismo. This beautiful cruiser offers excellent handling and performance, turning every trip into an unforgettable experience for you and your loved ones. Enjoy the spacious sun deck, the well-thought-out cockpit layout, the electric sliding roof, and the comfortable cabins. The vessel is equipped with, among other things, hot air heating, air conditioning, a generator, electric cooking facilities, an outdoor bar, bow and stern thrusters with remote control, and much more. Come and see her in our sales marina in Loosdrecht.

Hielke Peters

SPECIFICATIONS

Dimensions	14.78 x 4.02 x 1.05 (m)	Builder	Fairline yachts
Built	2006	Cabins	2
Material	GRP	Berths	6
Engine(s)	2 x Volvo Penta D9-575 diesel	Hp/Kw	2 x 575.00 (hp), 423.20 (kw)
Asking price	€ 309.000 (VAT Paid)	Lying	at sales office

CONTACT

Sales office	De Valk Loosdrecht B.V.	Telephone	+31 (0)35 582 90 30
Address	't Breukeleveense Meentje 6 1231LM Loosdrecht / Wijdmeren NL	E-mail	loosdrecht@devalk.nl

DISCLAIMER

These particulars are given in good faith as supplied but cannot be guaranteed.



FAIRLINE TARGA 47 GRAN TURISMO

GENERAL

Model	FAIRLINE TARGA 47 GRAN TURISMO
Type	motor yacht
LOA (m)	14,78
Beam (m)	4,02
Draft (m)	1,05
Year built	2006
Builder	Fairline yachts
Country	United Kingdom
Designer	Bernard Olesinski
Displacement (t)	14,5
CE norm	B
Hull material	GRP
Hull colour	grey
Hull shape	deep-V
Superstructure material	GRP
Rubbing strake	stainless steel
Deck material	GRP
Deck finish	teak
Superstructure deck finish	non-skid moulded in
Cockpit deck finish	teak
Window frame	stainless steel
Window material	tempered glass
Deckhatch	yes
Portholes	stainless steel 5x each side
Radar arch	non collapsible
Fuel tank (litre)	stainless steel 700
Fuel tank 2 (litre)	stainless steel 700
Level indicator (fuel tank)	yes
Freshwater tank (litre)	stainless steel 364
Level indicator (freshwater)	Volvo Penta



FAIRLINE TARGA 47 GRAN TURISMO

Blackwater tank (litre)	yes
Level indicator (blackwater)	Volvo Penta
Blackwater tank extraction	deck extraction + pump
Wheel steering	hydraulic Seastar
Inside helm position	yes

ACCOMMODATION

Cabins	2
Berths	6
Interior	cherry
Floor	teak + carpet
Open cockpit	yes
Sliding roof	electric
Heating	diesel ducted hot air Eberspächer
Air-conditioning	single cycle airco Airmarr
Dinette	yes
Dinette to convert into berth	yes
Sliding door to cockpit	yes
Galley	yes
Countertop	corian
Sink	stainless steel
Cooker	induction 2-burner Plastimo
Microwave	Sharp
Fridge	Isotherm
Freezer	Inside fridge
Hot water system	220V + engine
Water pressure system	electrical
Owners cabin	French bed
Wardrobe	hanging/drawers/shelves
Bathroom	en suite
Toilet	en suite



FAIRLINE TARGA 47 GRAN TURISMO

Toilet system	electric
Wash basin	in the bathroom
Shower	en suite
Guest cabin 1	twin single
Wardrobe	hanging and drawers
Bathroom	en suite
Toilet	en suite
Toilet system	electric
Wash basin	in the bathroom
Shower	en suite
Tender garage	yes

MACHINERY

No of engines	2
Make	Volvo Penta
Type	D9-575
HP	575
kW	423.20
Fuel	diesel
Engine cooling system	freshwater heat exchanger
Drive	shaft
Shaft seal	yes
Engine controls	electrical Volvo Penta
Gearbox	hydraulic ZF 305A
Bowthruster	electric Sidepower
Sternthruster	electric Sidepower
Exhaust	watercooled
Propeller type	fixed
Propeller shaft material	stainless steel
Shaft lubrication	water
Manual bilge pump	2x



FAIRLINE TARGA 47 GRAN TURISMO

Electric bilge pump	yes
Bilge alarm	yes
Generator	wet exhaust Oman marine
Running hours generator	502
Batteries	yes
Start battery	2x VMF-BATTERY 180ah
Service battery	4x Fullmen FG1803 180Ah
Generator battery	yes
Battery monitor	yes
Battery charger	Mastervolt charge master 24/75
Solar panel	yes
Diode battery combiners	yes
Shorepower	with cable
Trimtabs	Lenco
Extra info	Last engine service 17-04-2026

NAVIGATION

Compass	Danforth
Electric compass	Raymarine ST6002
Multi control display	Raymarine ST60+
Depth sounder/log	Raymarine ST60+
VHF	ICON Commandmic
Autopilot	Raymarine ST6002
Rudder angle indicator	Raymarine ST6002
Radar/plotter	Raymarine E120
Navigation lights	yes
Searchlight	Jabsco

EQUIPMENT

Fixed windscreen	yes
Cockpit cover	yes



FAIRLINE TARGA 47 GRAN TURISMO

Cockpit cushions	yes
Cockpit table	yes
Bathing platform	yes
Boarding ladder	stainless steel
Gangway	Berenzoni
Anchor	yes
Anchor chain	yes
Windlass	electrical Lewmar
Grab rail (superstructure)	stainless steel
Wiper	2x
Horn	electric
Fenders	yes
Mooring lines	yes
TV	Samsung
TV receiver	yes
Radio	JL Audio
Surround Sound System	JL Audio
Cockpit speakers	yes
Speakers in salon	yes



FAIRLINE TARGA 47 GRAN TURISMO



FAIRLINE TARGA 47 GRAN TURISMO



FAIRLINE TARGA 47 GRAN TURISMO



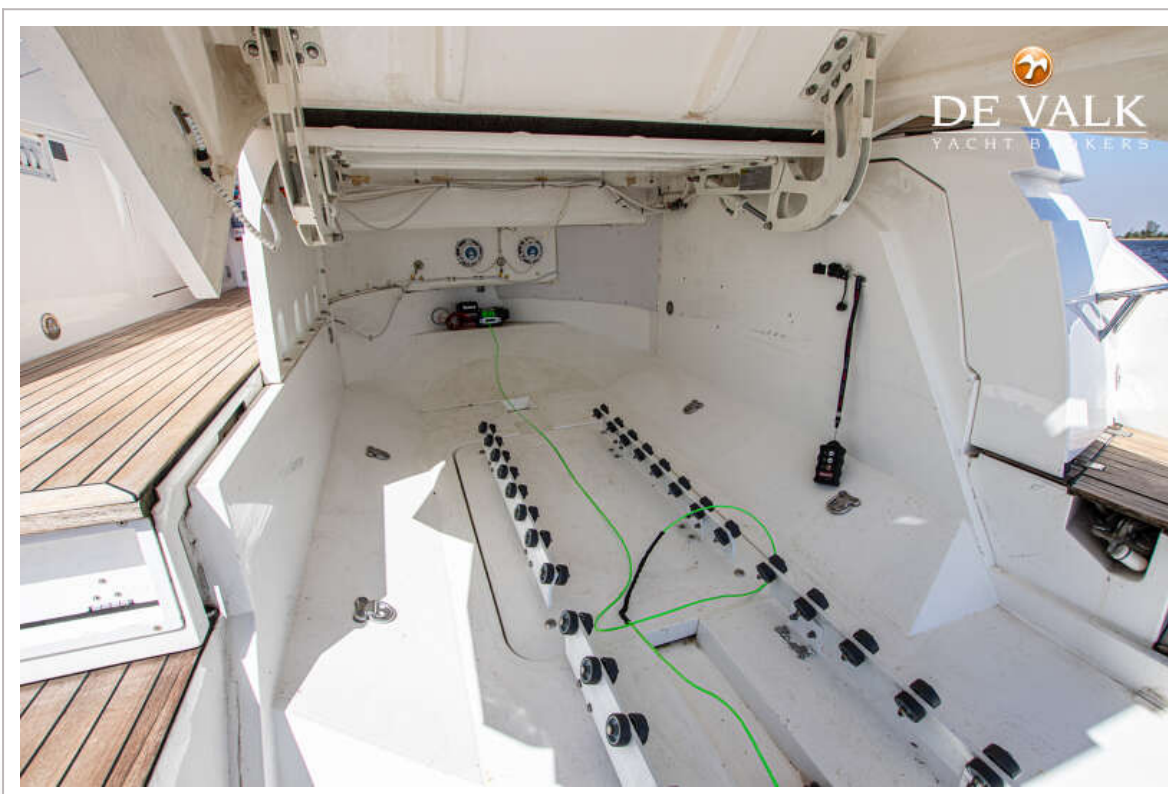
FAIRLINE TARGA 47 GRAN TURISMO



FAIRLINE TARGA 47 GRAN TURISMO



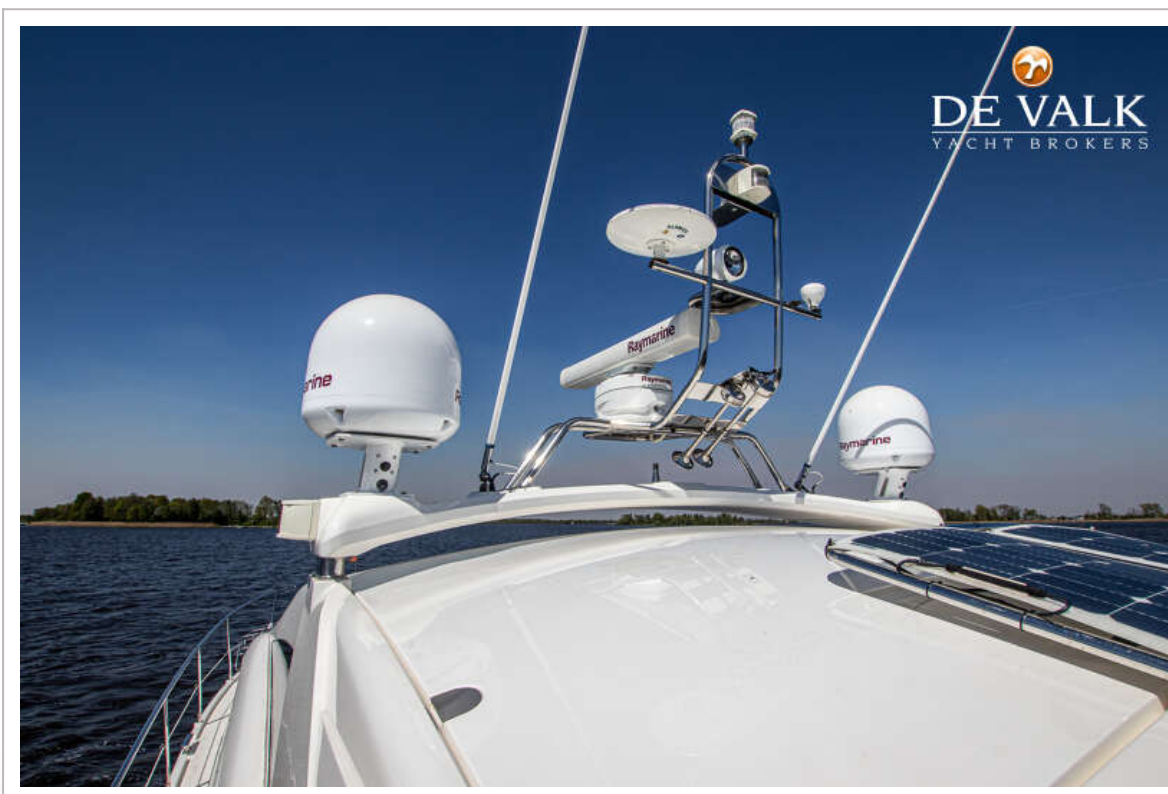
FAIRLINE TARGA 47 GRAN TURISMO



FAIRLINE TARGA 47 GRAN TURISMO



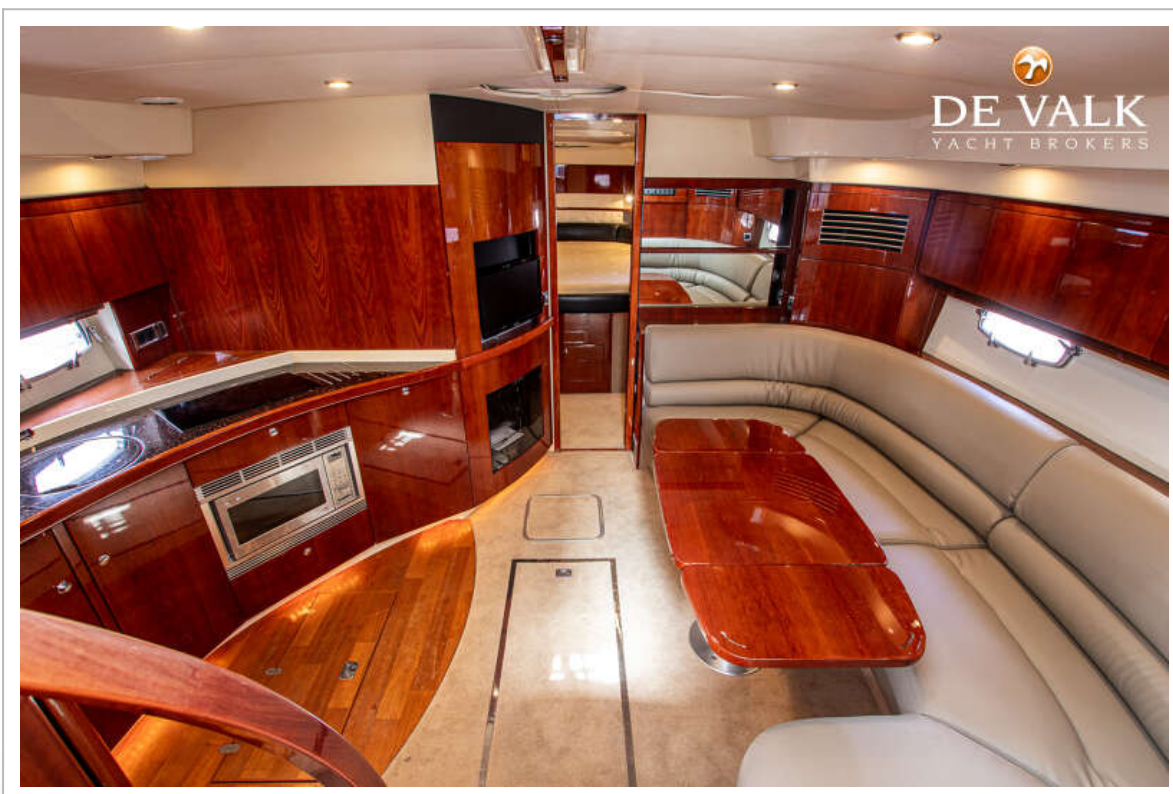
FAIRLINE TARGA 47 GRAN TURISMO



FAIRLINE TARGA 47 GRAN TURISMO



FAIRLINE TARGA 47 GRAN TURISMO



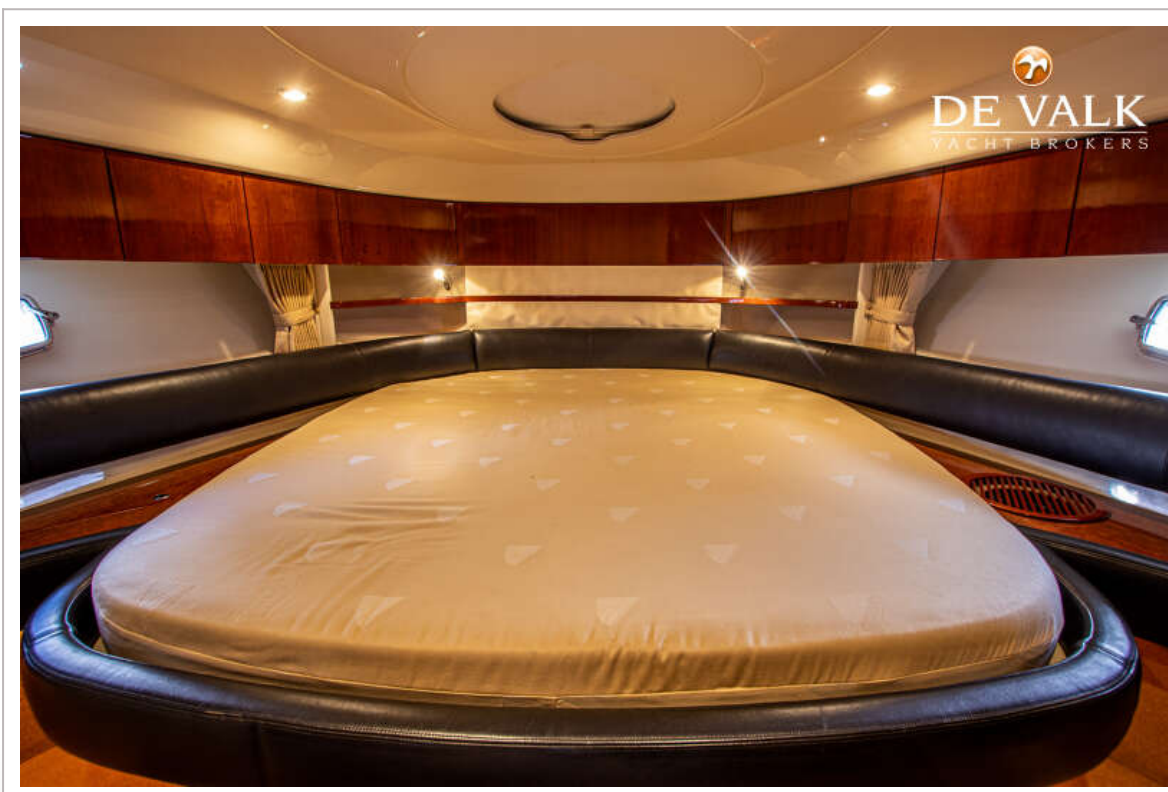
FAIRLINE TARGA 47 GRAN TURISMO



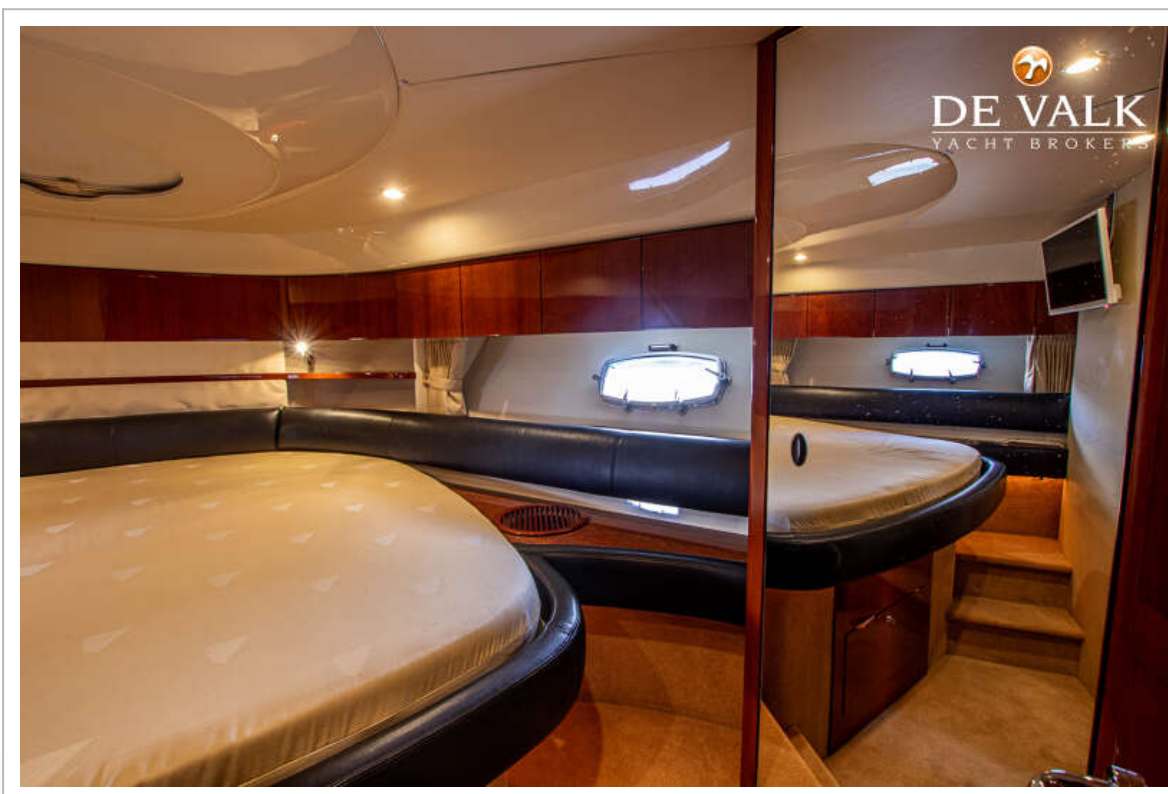
FAIRLINE TARGA 47 GRAN TURISMO



FAIRLINE TARGA 47 GRAN TURISMO



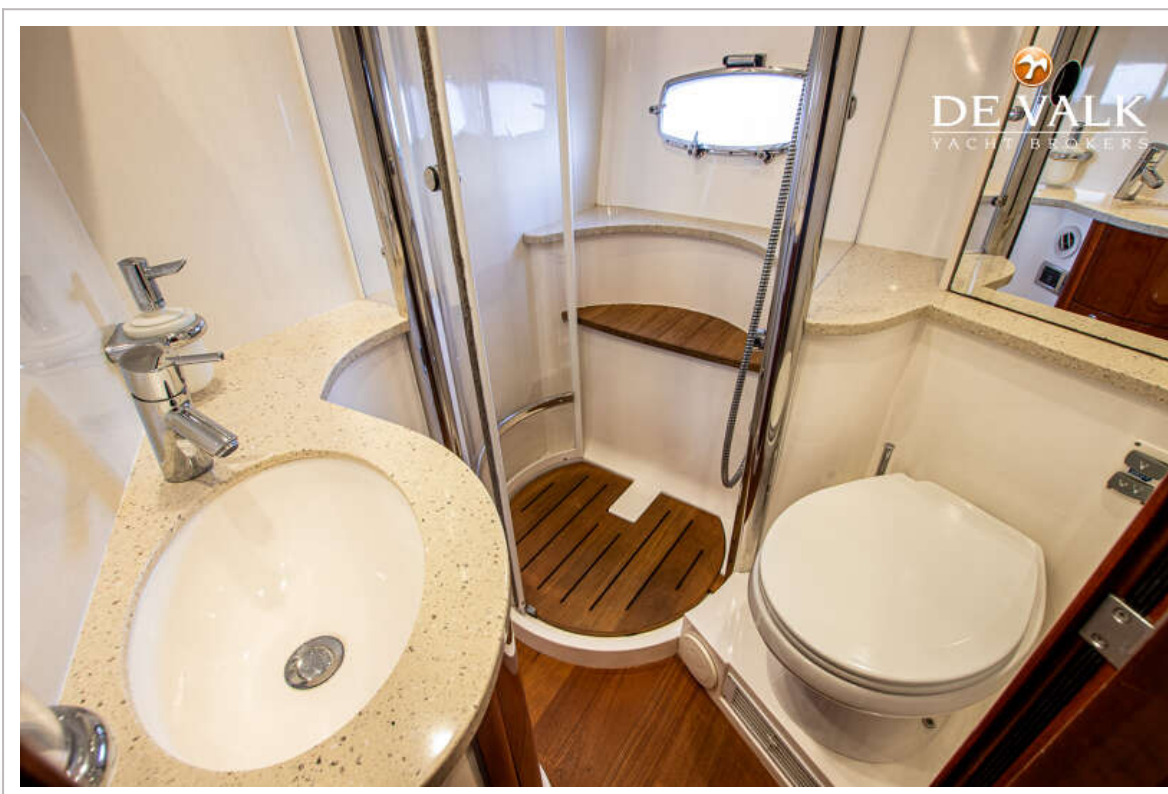
FAIRLINE TARGA 47 GRAN TURISMO



FAIRLINE TARGA 47 GRAN TURISMO



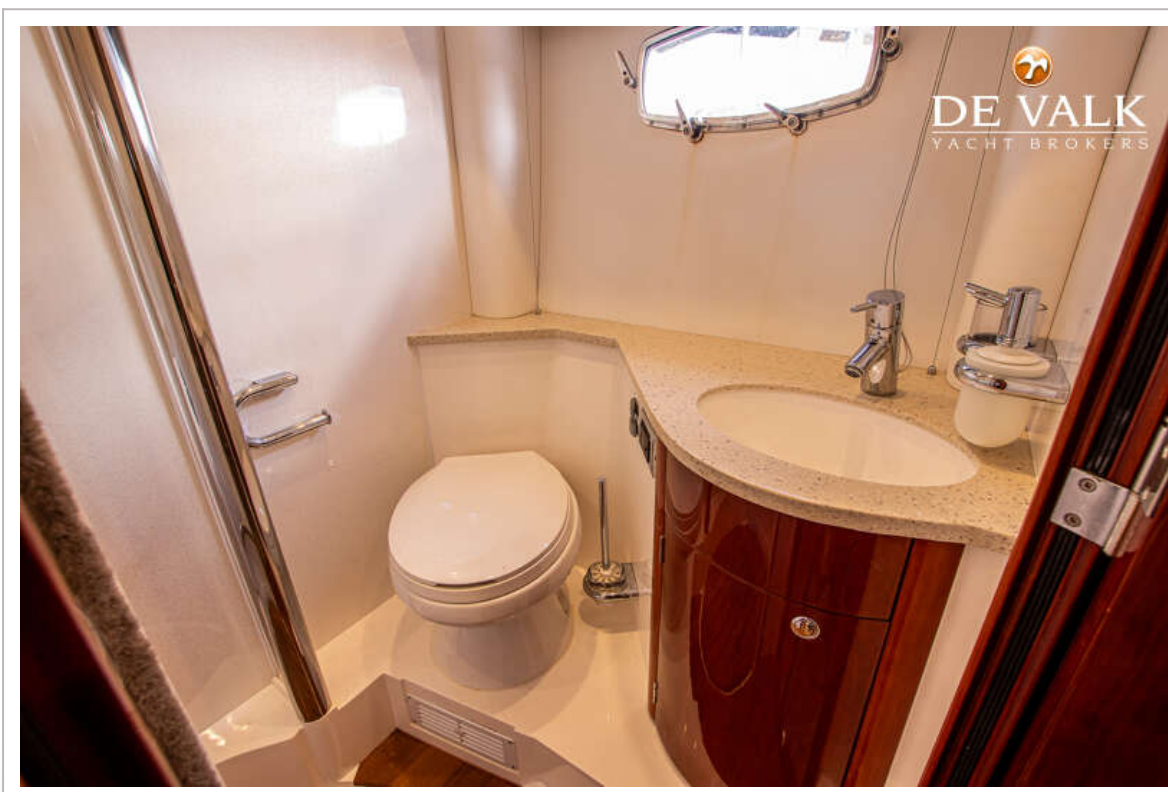
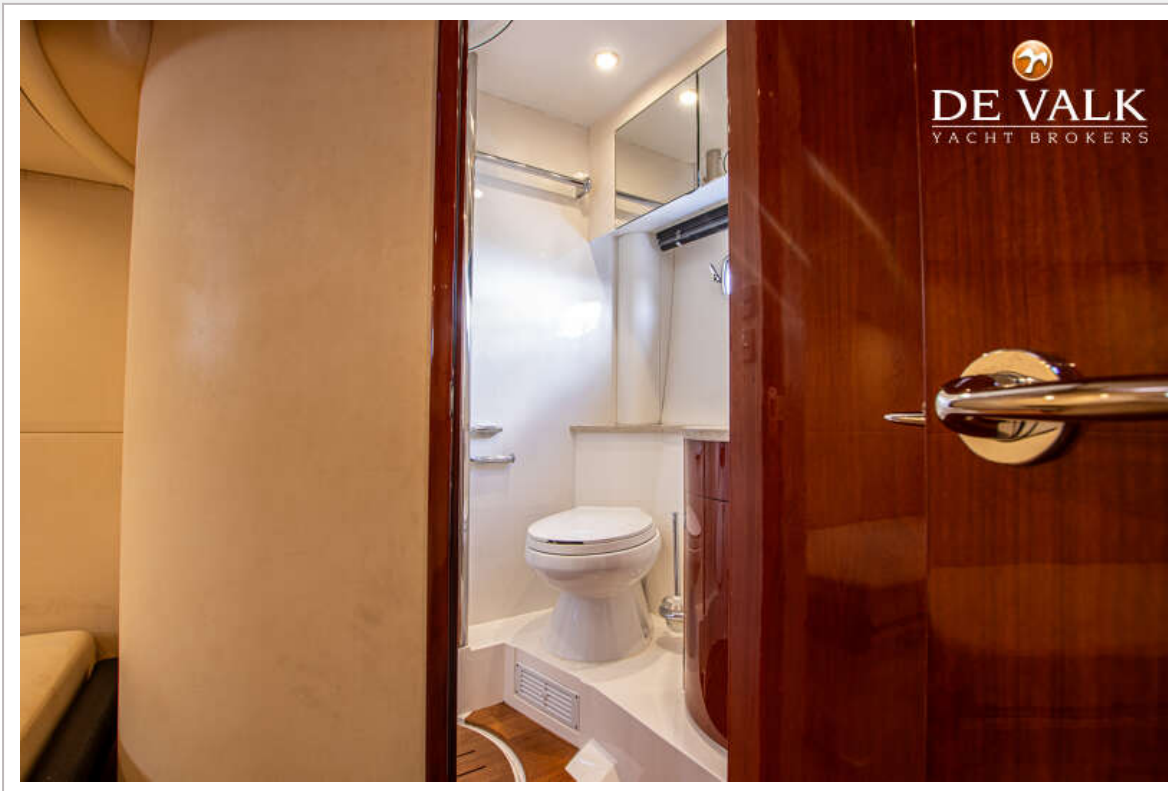
FAIRLINE TARGA 47 GRAN TURISMO



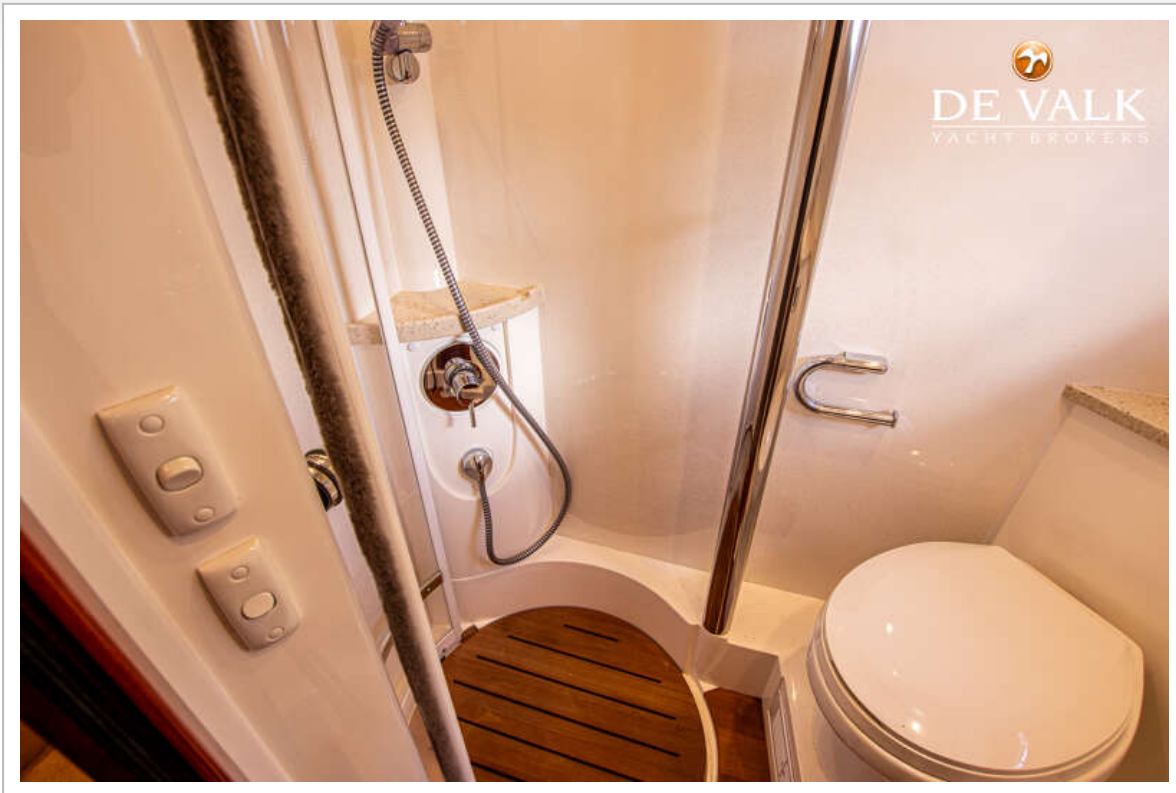
FAIRLINE TARGA 47 GRAN TURISMO



FAIRLINE TARGA 47 GRAN TURISMO



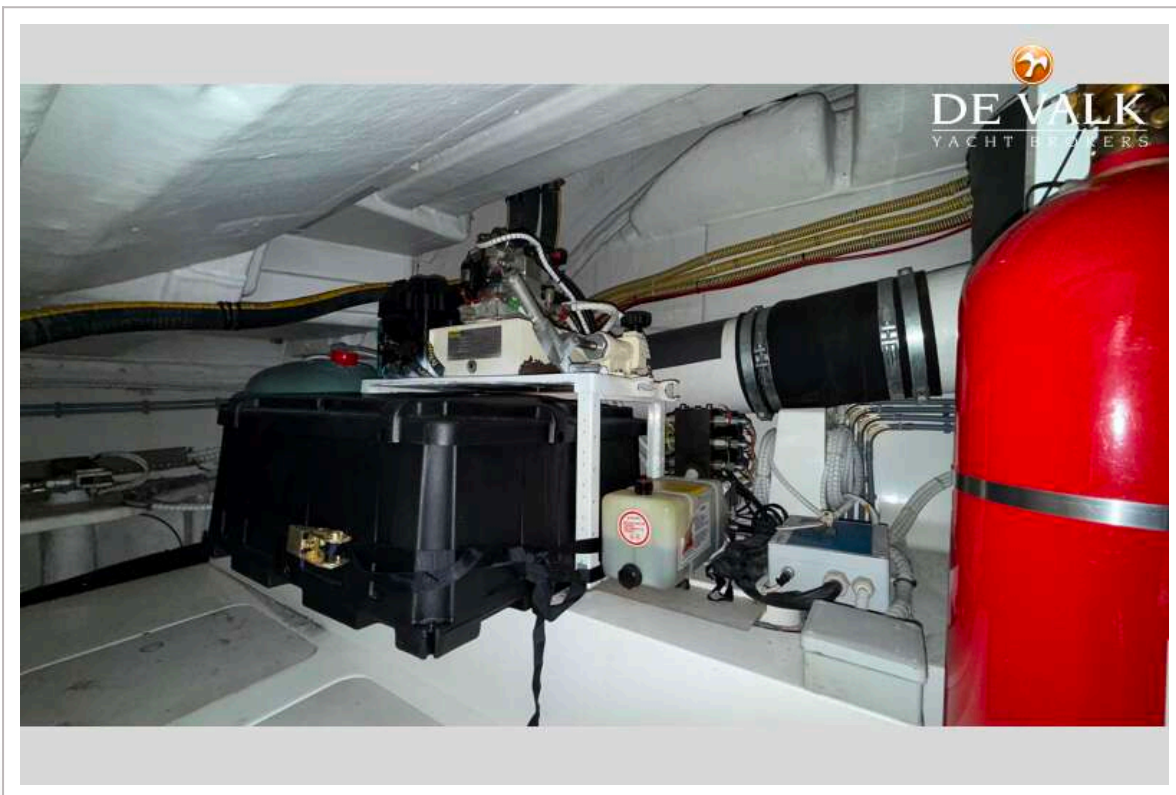
FAIRLINE TARGA 47 GRAN TURISMO



FAIRLINE TARGA 47 GRAN TURISMO



FAIRLINE TARGA 47 GRAN TURISMO



FAIRLINE TARGA 47 GRAN TURISMO

