



DE VALK
YACHT BROKERS



PRINCESS 470



DE VALK
YACHT BROKERS

PRINCESS 470

BROKER'S COMMENTS

Princess 470 from 1993 in well-maintained condition. This Princess 470 offers a spacious layout with 2 cabins and 2 bathrooms, ideal for longer stays onboard. The engines were replaced in 2018 and much of the equipment was renewed in 2020, providing extra comfort and reliability. The large flybridge offers ample seating and excellent visibility while cruising. A comfortable and timeless motor yacht with generous living space.

Jochem Heijermans

SPECIFICATIONS

Dimensions	14.55 x 4.32 x 1.20 (m)	Builder	Marine Projects Ltd
Built	1993	Cabins	2
Material	GRP	Berths	4
Engine(s)	2 x Volvo Penta D6-435 diesel	Hp/Kw	2 x 435.00 (hp), 320.16 (kw)
Asking price	€ 245.000 (VAT Paid)	Lying	elsewhere / Not at sales office

CONTACT

Sales office	De Valk Sint Annaland B.V.	Telephone	+31 166 601 000
Address	Koelhuisweg 4 4697 RM Sint Annaland NL	E-mail	sintannaland@devalk.nl

DISCLAIMER

These particulars are given in good faith as supplied but cannot be guaranteed.



GENERAL

Model	PRINCESS 470
Type	motor yacht
LOA (m)	14,55
Beam (m)	4,32
Draft (m)	1,20
Air draft (m)	4,80
Headroom (m)	2,00
Year built	1993
Builder	Marine Projects Ltd
Country	United Kingdom
Designer	Bernard Olensinki
Displacement (t)	18
Hull material	GRP
Hull colour	white
Hull shape	deep-V
Superstructure material	GRP
Rubbing strake	stainless steel
Deck material	GRP
Deck finish	non-skid moulded in
Superstructure deck finish	non-skid moulded in
Cockpit deck finish	teak (2018)
Antifouling (year)	2025
Window frame	stainless steel
Window material	glass
Deckhatch	yes
Portholes	8 x
Flybridge	yes
Radar arch	collapsible
Fuel tank (litre)	2 x 1500
Level indicator (fuel tank)	yes



Freshwater tank (litre)	750
Level indicator (freshwater)	yes
Blackwater tank (litre)	500
Wheel steering	hydraulic
Inside helm position	yes
Flybridge helm position	hydraulic
More info on hull	Underwaterbody old primer removed, new primer + antifouling 2024

ACCOMMODATION

Cabins	2
Berths	4
Floor	carpet + teak & holly (2024)
Deck saloon	yes
Saloon	yes
Headroom saloon (m)	2,00
Heating	diesel ducted hot air Webasto Airtop EVO 55 (2020)
Dinette	Custom build (2019)
Sliding door to cockpit	yes
Galley	yes
Countertop	corian
Sink	stainless steel
Cooker	induction 4 burner (2022)
Microwave/oven combi	Panasonic Dimension 4
Fridge	2 x
Freezer	yes
Hot water system	220V + engine (2018)
Water pressure system	electrical
Owners cabin	French bed Matrass (2024)
Wardrobe	hanging and drawers
Bathroom	en suite Replacing taps and showerheads (2023)



Toilet	en suite
Toilet system	electric
Wash basin	in the bathroom
Shower	en suite
Guest cabin 1	twin single New upholstery mattress (2018)
Wardrobe	hanging and drawers
Bathroom	en suite
Toilet	en suite
Toilet system	electric
Wash basin	in the bathroom
Shower	en suite
Extra info	LED lighting

MACHINERY

No of engines	2
Make	Volvo Penta
Type	D6-435
HP	435
kW	320.16
Fuel	diesel
Year installed	2018
Maximum speed (kn)	26
Cruising speed (kn)	21
Engine hours	298
Engine cooling system	freshwater heat exchanger
Drive	shaft
Engine controls	electrical Volvo Penta (2018)
Gearbox	hydraulic (2018)
Bowthruster	electric Vetus 130 kgf
Sternthruster	electric Vetus (2024)
Propeller type	fixed (2018)



Propeller shaft material	stainless steel
Shaft lubrication	water (2018)
Electric bilge pump	4 x
Electrical installation	24/220V
Generator	Westerbeke 6 Kva
Running hours generator	80
Start battery	(2026)
Service battery	4x (2020)
Generator battery	yes
Bowthruster battery	yes
Sternthruster battery	yes
Battery monitor	yes
Battery charger	Victron 24V/30Ah (2018)
Battery charger/inverter	Newmar 220/24/80
Shorepower	with cable
Trimtabs	ZipWake S750 auto trim + stabilisatie (2018)
Extra info	Volvo Penta EVC System (2019)

NAVIGATION

Compass	Plastimo
Depth sounder	Simrad (2018)
Forw. looking depth sounder	Pantoptix (2018)
VHF	Simrad (2018)
Autopilot	Simrad (2018)
Rudder angle indicator	yes
Radar	Simrad (2018)
Plotter	5x Simrad NSS9 (2018)
Radar/GPS/plotter	1x Simrad NSS12 (2018)
Navigation lights	yes

EQUIPMENT



PRINCESS 470

Fixed windscreen	yes
Cockpit cover	yes
Cockpit table	(2019)
Bathing platform	yes
Boarding ladder	stainless steel
Transom door	yes
Deck shower	yes
Anchor	CQR Plough
Anchor chain	yes
Windlass	electrical Lewmar
Deck wash	yes
Davits	stainless steel (not mounted)
Davits controls	manual
Sea railing	stainless steel
Grab rail (superstructure)	stainless steel
Wiper	3 x
Horn	electric
Fenders	yes
Mooring lines	yes
TV	yes
TracVision ball	yes
Radio	Fusion (2020)
Cockpit speakers	yes
Speakers in salon	yes
Speakers in cabin	yes
Clock - barometer	yes
Fire extinguisher	yes



PRINCESS 470



PRINCESS 470



PRINCESS 470



PRINCESS 470



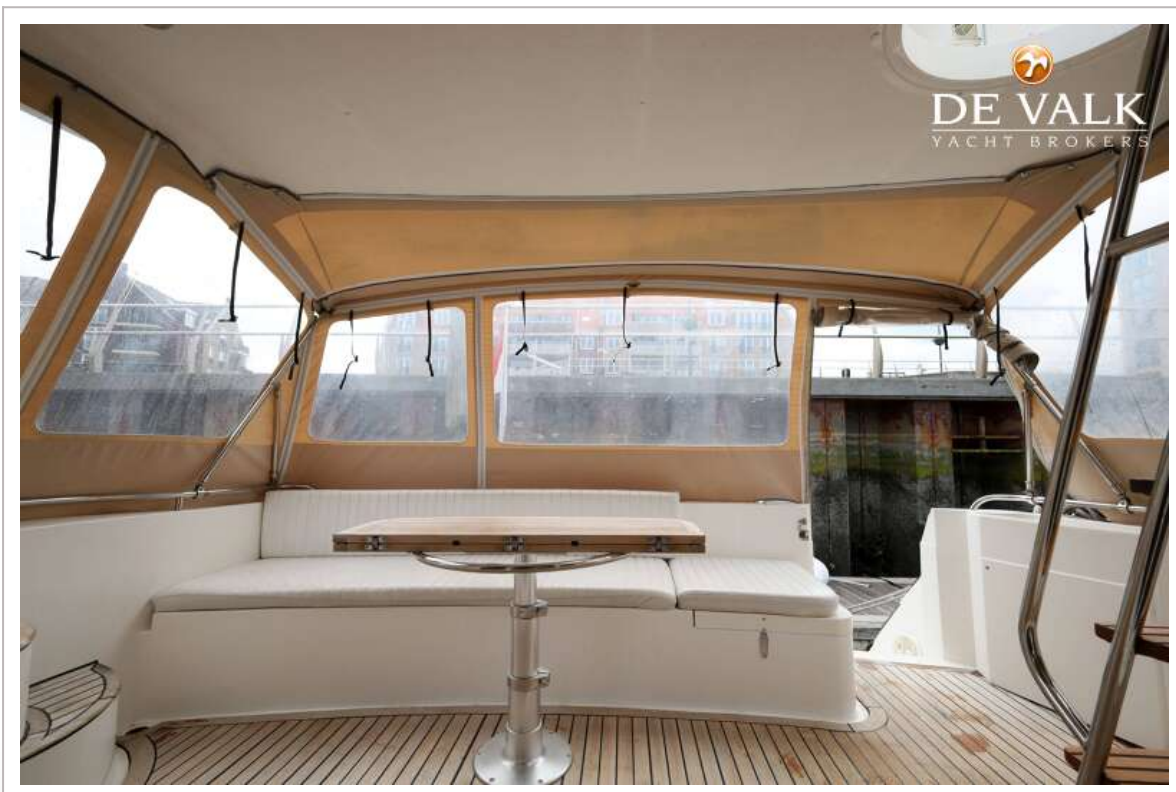
PRINCESS 470



PRINCESS 470



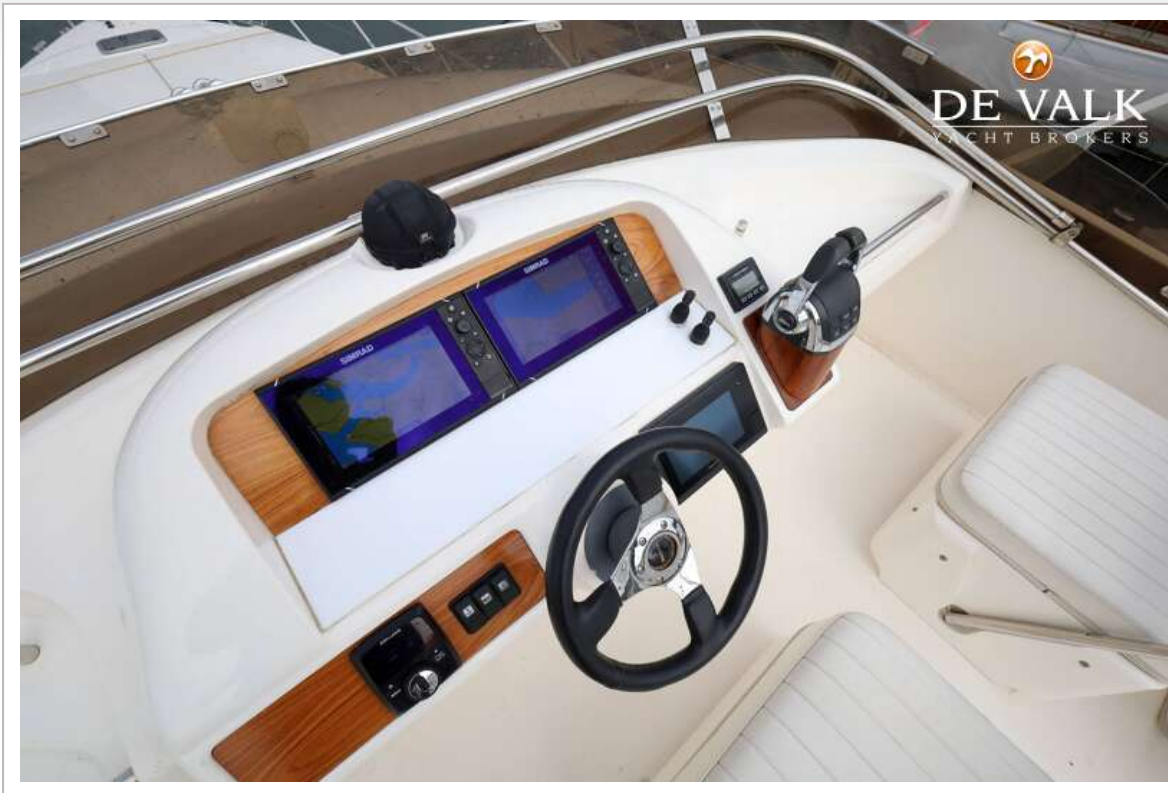
PRINCESS 470



PRINCESS 470



PRINCESS 470



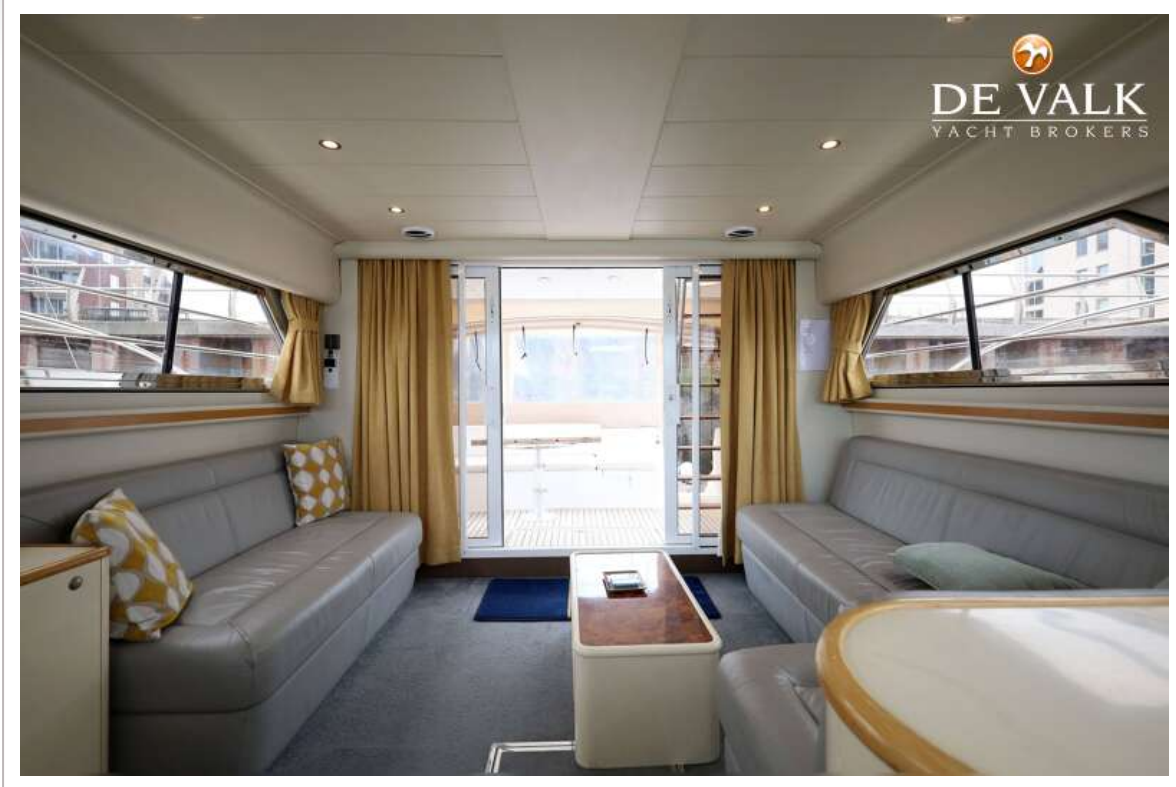
PRINCESS 470



PRINCESS 470



PRINCESS 470



PRINCESS 470



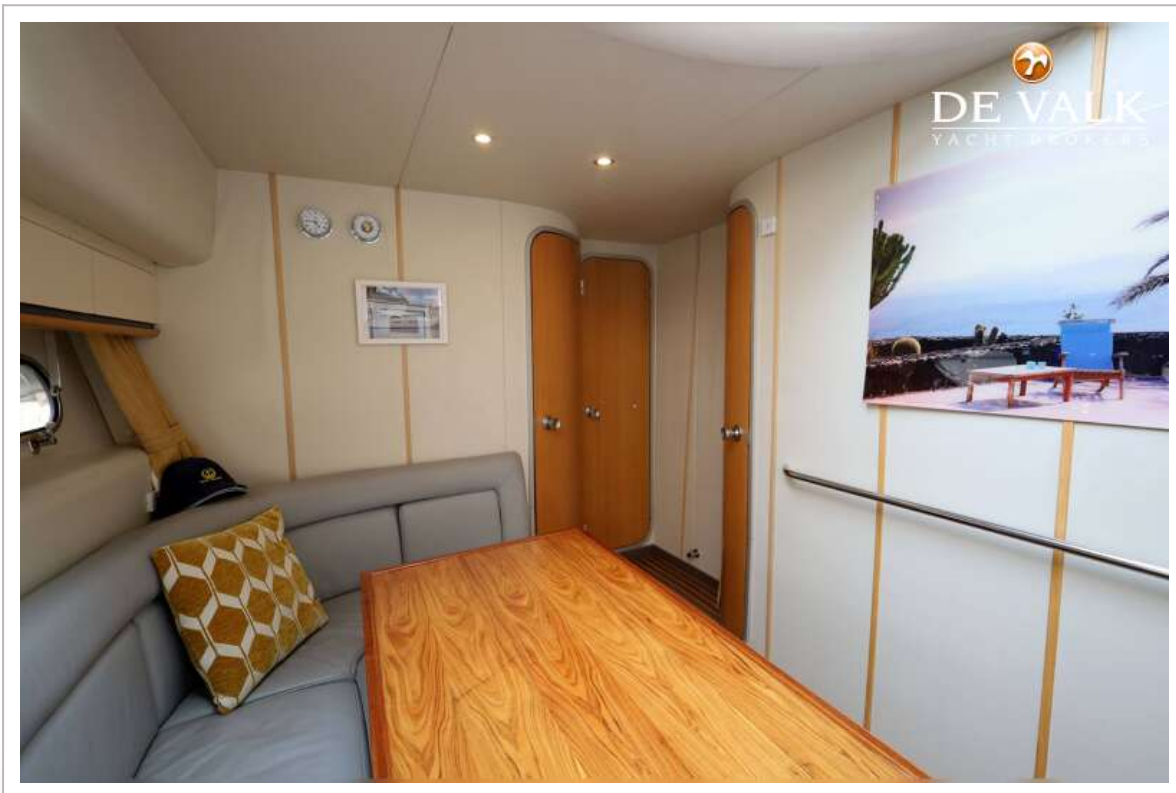
PRINCESS 470



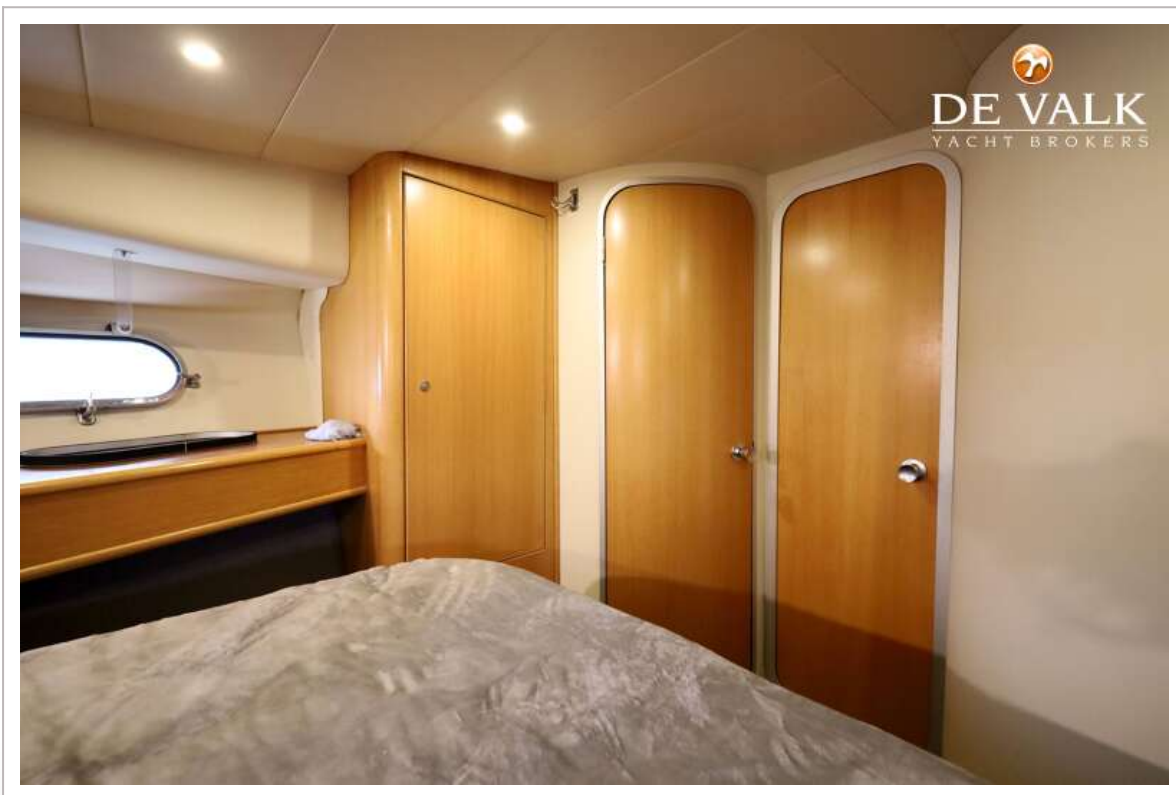
PRINCESS 470



PRINCESS 470



PRINCESS 470



PRINCESS 470



PRINCESS 470



