



BOARNCRUISER 38 CLASSIC LINE OK

BOARNCRUISER 38 CLASSIC LINE OK

BROKER'S COMMENTS

With its elegant lines and distinctive bow, the Boarncruiser 38 Classic Line OK, combined with its luxurious interior, is an impressive and timeless beauty on the water. The "Jonas" is designed as a comfortable two-person yacht and comes very comprehensively equipped. In many details, it is even more refined than Boarnstream's generally high-quality yachts. This young yacht is in perfectly maintained condition.

Ralph Weil

SPECIFICATIONS

Dimensions	11.40 x 4.05 x 1,10 / 0.00 (m)	Builder	Boarncruiser
Built	2023	Cabins	1
Material	Steel	Berths	4
Engine(s)	1 x Volvo-Penta D3-150 diesel	Hp/Kw	150.00 (hp), 110.40 (kw)
Asking price	€ 375.000 (VAT Paid)	Lying	contact Berlin

CONTACT

Sales office	De Valk Berlin	Telephone	+49 30 325 99 651
Address	Siegfried-Berger Str.13 12557 Berlin DE	E-mail	berlin@devalk.nl

DISCLAIMER

These particulars are given in good faith as supplied but cannot be guaranteed.



BOARNCRUISER 38 CLASSIC LINE OK

GENERAL

Model	BOARNCRUISER 38 CLASSIC LINE OK
Type	motor yacht
LOA (m)	11,40
Beam (m)	4,05
Draft min (m)	1,10
Air draft min (m)	2,55
Headroom (m)	1,90
Year built	2023
Builder	Boarncruiser
Country	The Netherlands
Displacement (t)	14
CE norm	B
Hull material	steel
Hull colour	white
Hull thickness (mm)	4
Hull shape	multi hard chine
Keel type	long keel
Superstructure material	steel
Superstructure (mm)	4/5
Rubbing strake	fender rope
Deck material	steel
Deck finish	synthetic teak
Superstructure deck finish	synthetic teak Incl. gangboard and upon bulwark Schanzkleidoberseite
Cockpit deck finish	synthetic teak
Antifouling (year)	2025
Window frame	aluminium
Window material	double glazing
Deckhatch	1 x 68cm x 55cm Bugkajüte 1 x 115cm x 65cm Salon
Portholes	aluminium 5 x incl. Mosquito screens / Fliegengitter
Insulation	rockwool



BOARNCRUISER 38 CLASSIC LINE OK

Mast can be lowered	manual
Fuel tank (litre)	steel 2 x 300
Level indicator (fuel tank)	Analog
Freshwater tank (litre)	polyethylene 2 x 250
Level indicator (freshwater)	Analog
Blackwater tank (litre)	polyethylene 250
Level indicator (blackwater)	Analog
Blackwater tank extraction	deck extraction
Wheel steering	hydraulic
Inside helm position	yes
Extra info	Extended bathing platform, length 100cm

ACCOMMODATION

Cabins	1
Berths	4
Interior	mahogany
Floor	Teak-Laminat Boden Teak laminate flooring
Open cockpit	yes
Pilot house/deck saloon	yes
Headroom saloon (m)	1,95
Heating	diesel ducted hot air 5,5kw
Dinette to convert into berth	yes
Sliding door to cockpit	3 teilig, Aluminium
Galley	yes
Countertop	HPL
Sink	stainless steel
Cooker	calor gas 2 burner
Fridge	130 l. Fridge-freezer combination & additional 55l cooling drawer.
Hot water system	220V + engine 40l.
Water pressure system	electrical



BOARNCRUISER 38 CLASSIC LINE OK

Owners cabin	double bed
Wardrobe	hanging/drawers/shelves
Bathroom	en suite
Toilet	en suite
Toilet system	electric
Wash basin	in the bathroom
Shower	en suite
Extra info	2 drawers under the fold-down bed in the VK

MACHINERY

No of engines	1
Make	Volvo-Penta
Type	D3-150
HP	150
kW	110.40
Fuel	diesel
Year installed	2023
Maximum speed (kn)	10
Cruising speed (kn)	8
Engine cooling system	freshwater heat exchanger
Drive	shaft
Engine controls	electrical
Bowthruster	electric 75 kgf Twin Propeller
Sternthruster	electric 75 kdf Twin Propeller
Exhaust	watercooled Vetus Waterlock
Propeller type	fixed
Propeller blades	4
Propeller shaft material	stainless steel
Shaft lubrication	water
Manual bilge pump	yes
Electric bilge pump	Automatic



BOARNCRUISER 38 CLASSIC LINE OK

Electrical installation	12 V
Start battery	140 Ah
Service battery	630 Ah
Bowthruster battery	120 Ah
Sternthruster battery	120 Ah
Battery monitor	Victron GX Touch 50
Battery charger/inverter	Victron 12V/3000W/100A
Solar panel	4 x 100WP
Shorepower	with cable 2. Anschluß am Bug 2. Connection at the bow

NAVIGATION

Electric compass	yes
Multi control display	2 x Raymarine i70
Depth sounder	yes
Log	yes
Rudder angle indicator	yes
Navigation lights	yes
Extra info	Remote control for bow and stern thrusters, engine forward/reverse, anchor winch

EQUIPMENT

Sprayhood	Extendable convertible top sections, curtain principle Canopeasy System, siehe Video
Fixed hardtop	Long top across the entire cockpit
Cockpit cushions	yes
Cockpit table	same wood finish as interior
Bathing platform	with 2 folding cleats
Boarding ladder	stainless steel Abnehmbar
Deck shower	W/k
Anchor	Delta 20KG VA
Anchor chain	30 m



Deck wash	yes
Sea railing	stainless steel Bugkorb offen open bow basket
Grab rail (superstructure)	yes
Wiper	2 x
Horn	yes
Fenders	yes
Mooring lines	yes
Radio	Fusion
Cockpit speakers	yes
Speakers in salon	yes
Fire extinguisher	2 x
Auto extinguisher system	yes



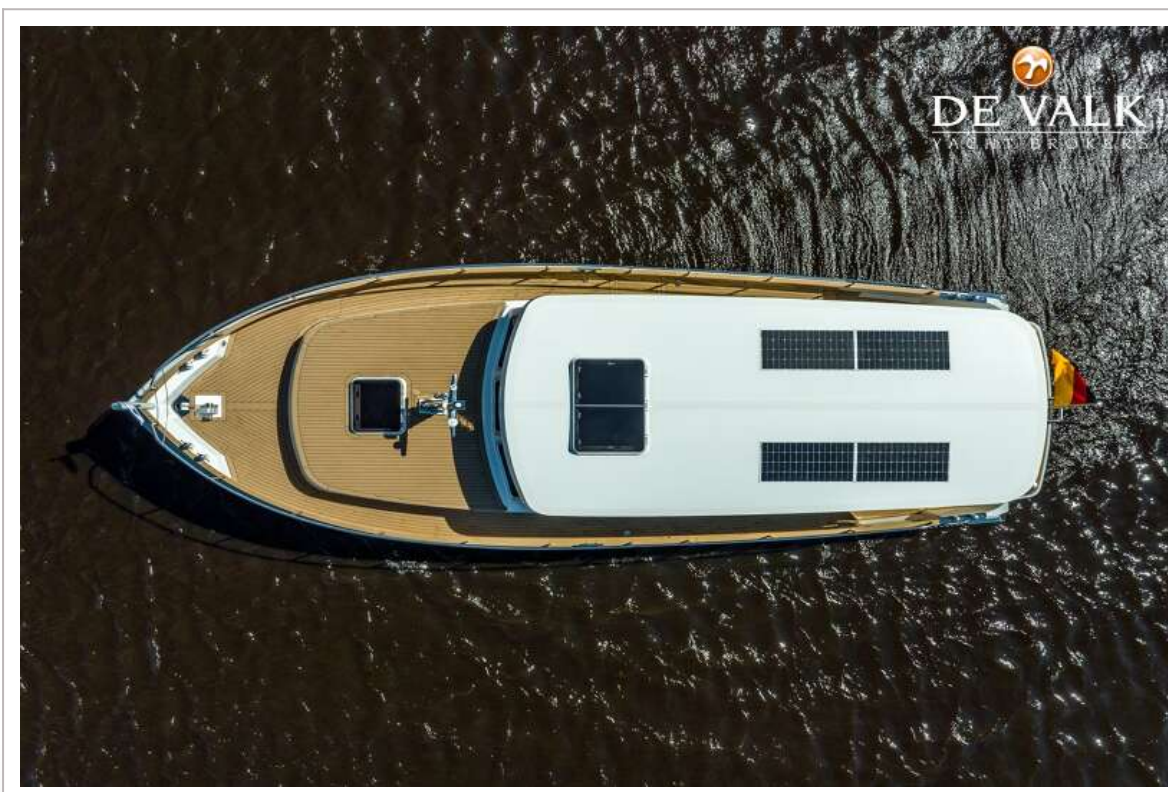
BOARNCRUISER 38 CLASSIC LINE OK



BOARNCRUISER 38 CLASSIC LINE OK



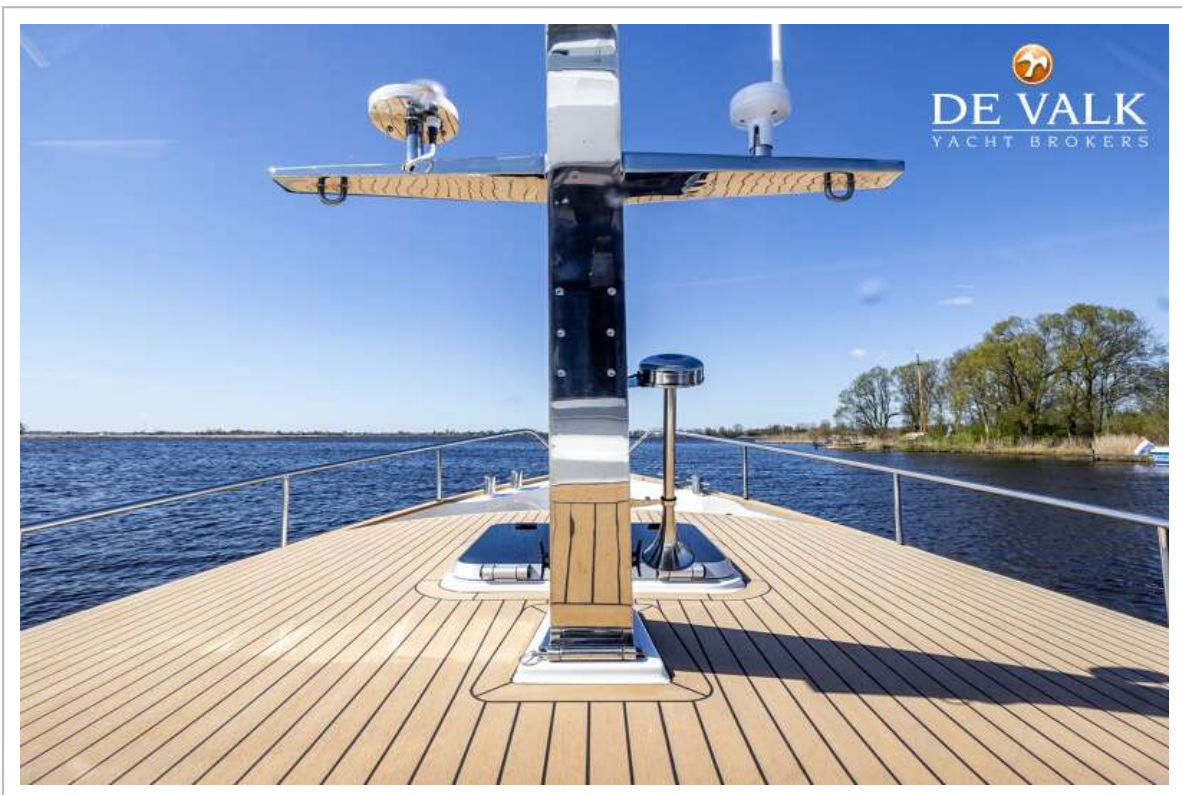
BOARNCRUISER 38 CLASSIC LINE OK



BOARNCRUISER 38 CLASSIC LINE OK



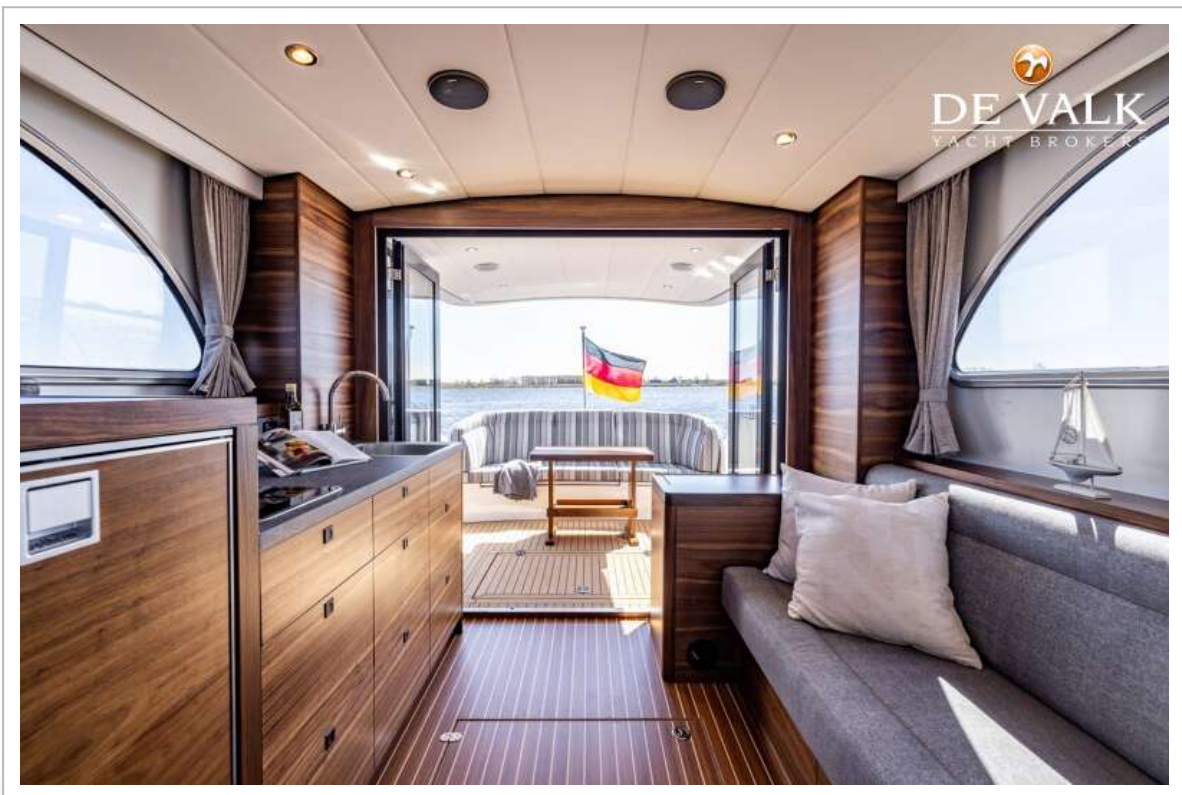
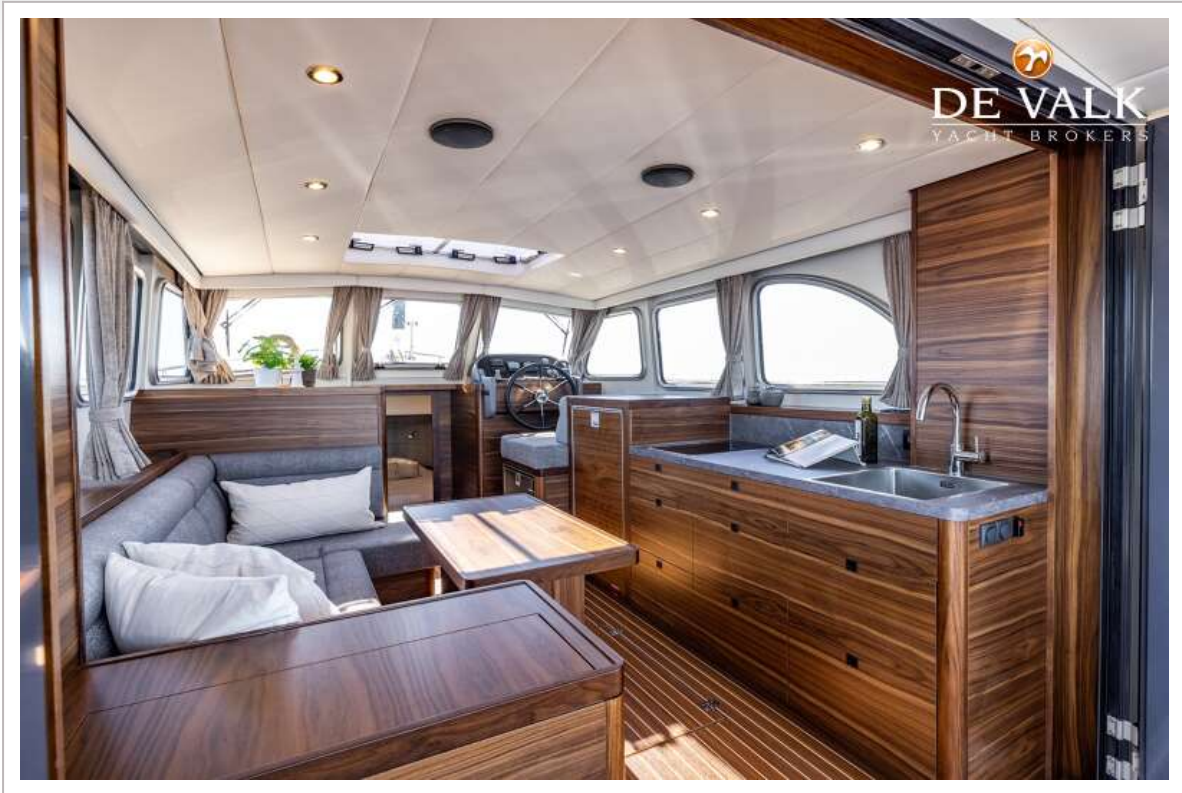
BOARNCRUISER 38 CLASSIC LINE OK



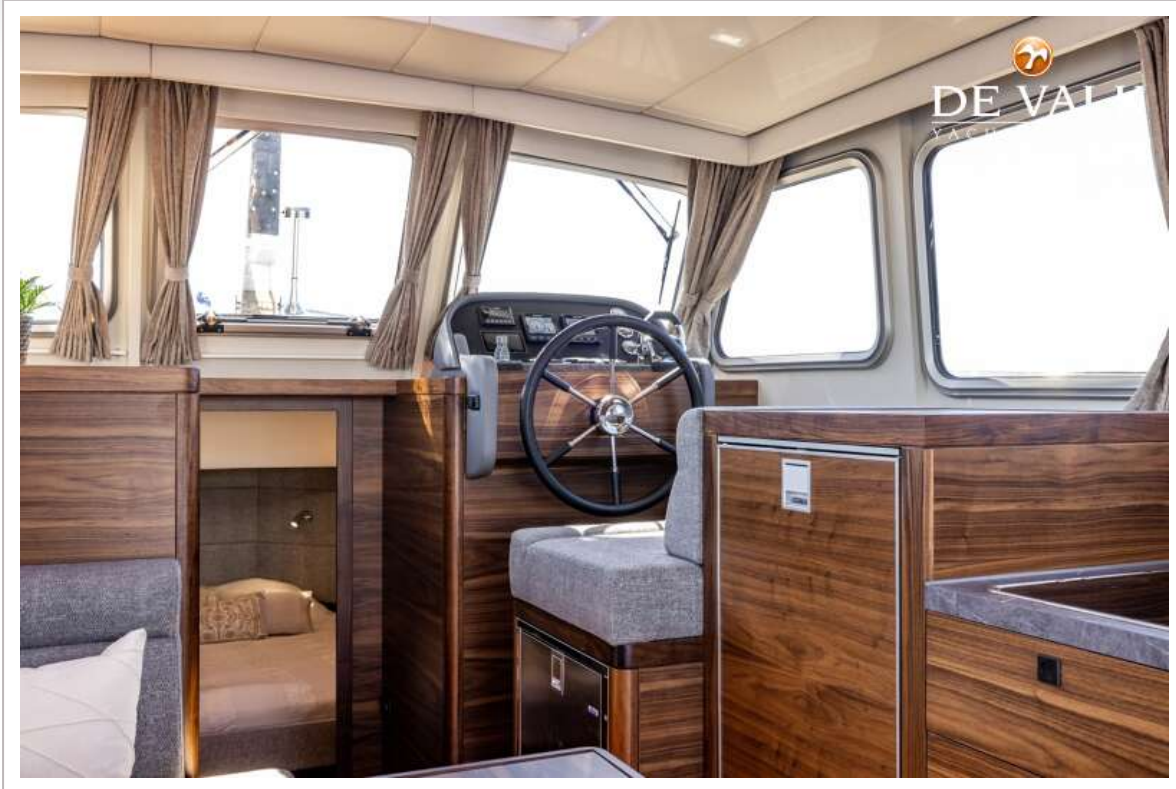
BOARNCRUISER 38 CLASSIC LINE OK



BOARNCRUISER 38 CLASSIC LINE OK



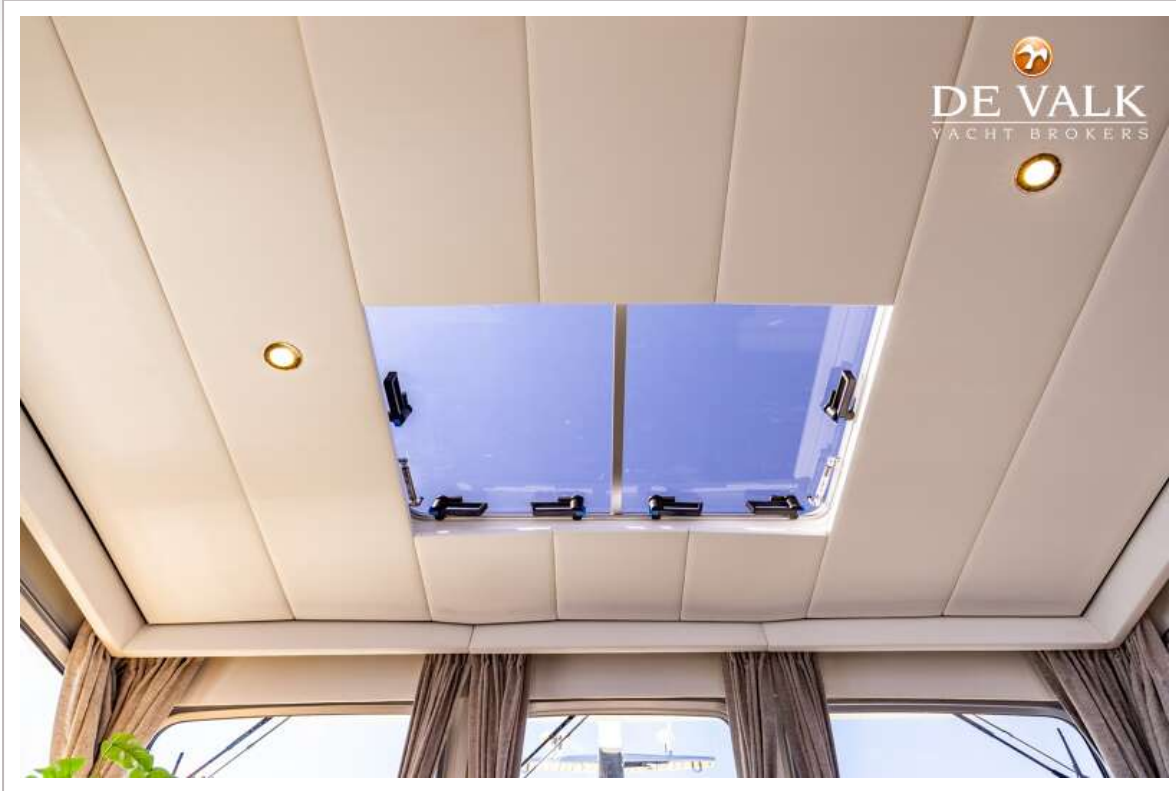
BOARNCRUISER 38 CLASSIC LINE OK



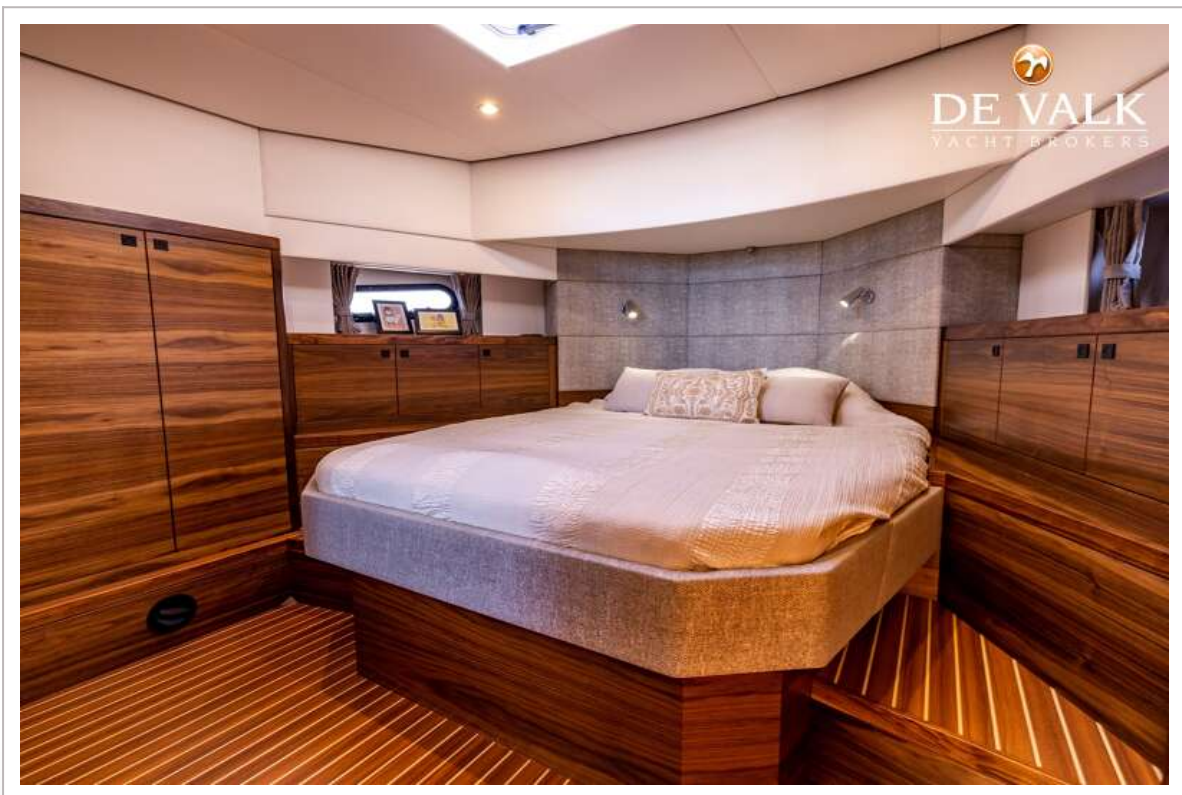
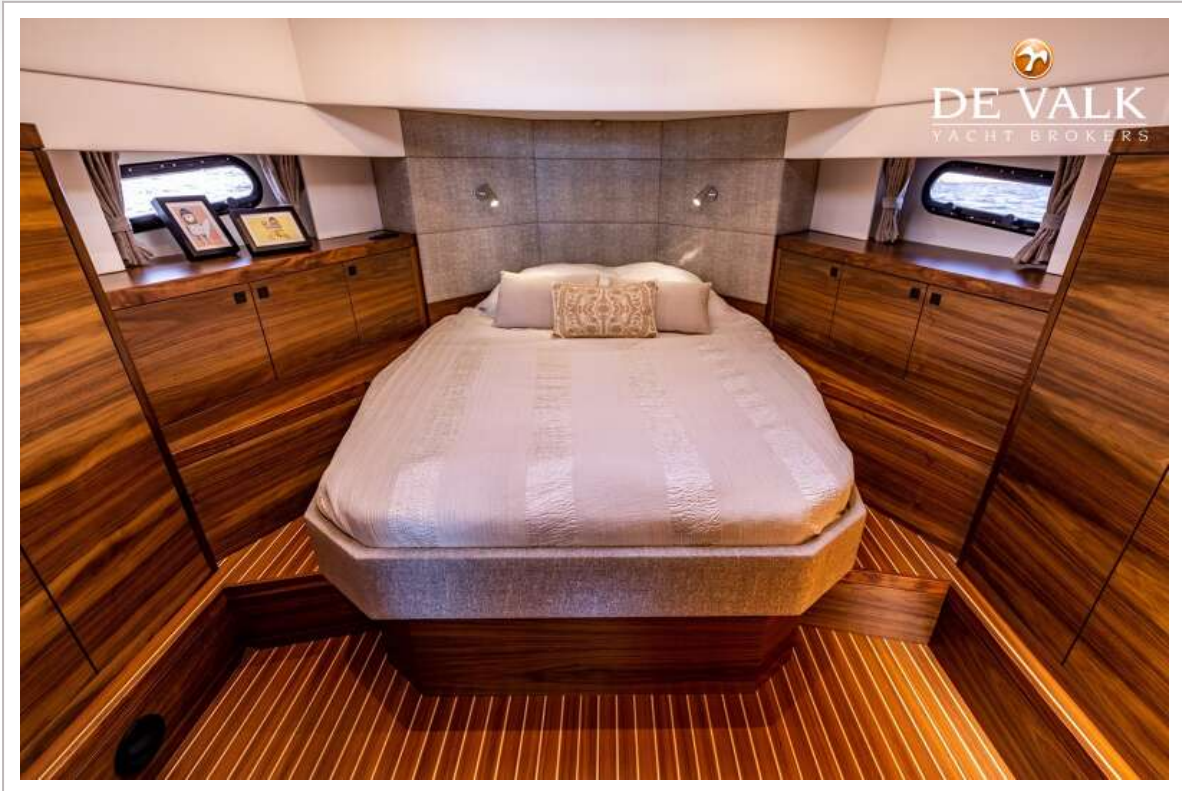
BOARNCRUISER 38 CLASSIC LINE OK



BOARNCRUISER 38 CLASSIC LINE OK



BOARNCRUISER 38 CLASSIC LINE OK



BOARNCRUISER 38 CLASSIC LINE OK

