



DE VALK
YACHT BROKERS



GRAND BANKS 46 EUROPA



DE VALK
YACHT BROKERS

GRAND BANKS 46 EUROPA

BROKER'S COMMENTS

The Grand Banks 46 Europa is a timeless long-range cruiser, combining classic lines with proven seaworthiness. The Grand Banks 46 Europa layout offers a spacious, protected aft deck and safe walk-around decks. Powered by twin diesel engines, she delivers efficient cruising with excellent stability. The warm teak interior features a comfortable saloon, lower helm and a practical two-cabin layout. Renowned for her build quality and reliability, she is ideal for extended cruising in comfort and style.

Raoul van der Werf

SPECIFICATIONS

Dimensions	14.35 x 4.50 x 1.37 (m)	Builder	American Marine
Built	2003	Cabins	3
Material	GRP	Berths	6
Engine(s)	2 x MAN D0836LE401 diesel	Hp/Kw	2 x 450.00 (hp), 331.20 (kw)
Asking price	€ 395.000 (VAT Paid)	Lying	elsewhere / Not at sales office

CONTACT

Sales office	De Valk Antibes	Telephone	+33 492 91 0202
Address	2, Avenue de Verdun 06600 Antibes FR	E-mail	antibes@devalk.nl

DISCLAIMER

These particulars are given in good faith as supplied but cannot be guaranteed.



GRAND BANKS 46 EUROPA

GENERAL

Model	GRAND BANKS 46 EUROPA
Type	motor yacht
LOA (m)	14,35
Beam (m)	4,50
Draft (m)	1,37
Year built	2003
Builder	American Marine
Country	Malaysia
Designer	John Bennet
Displacement (t)	18
CE norm	B
Hull material	GRP
Hull colour	white
Hull shape	deep-V
Superstructure material	GRP
Rubbing strake	yes
Deck finish	teak
Superstructure deck finish	teak
Cockpit deck finish	teak
Antifouling (year)	2025
Insulation	yes
Flybridge	yes
Flybridge suncover	yes
Radar arch	yes
Mast can be lowered	yes
Fuel tank (litre)	2700
Level indicator (fuel tank)	yes
Freshwater tank (litre)	1000
Wheel steering	hydraulic
Inside helm position	yes



GRAND BANKS 46 EUROPA

Shower	yes
Guest cabin 1	double bed +bunkbed
Bed length (m)	2
Wardrobe	drawers and shelves
Bathroom	separate
Toilet	separate
Toilet system	electric
Wash basin	in the bathroom
Guest cabin 2	twin single
Bed length (m)	yes
Wardrobe	drawers and shelves
Bathroom	separate
Toilet	separate
Toilet system	electric
Wash basin	in the bathroom
Shower	separate
Washing machine	Bosch

MACHINERY

No of engines	2
Make	MAN
Type	D0836LE401
HP	450
kW	331.20
Fuel	diesel
Engine controls	bowden cable
Bowthruster	Sleipner
Exhaust	watercooled
Propeller shaft material	stainless steel
Manual bilge pump	yes
Electric bilge pump	yes



GRAND BANKS 46 EUROPA

Bilge alarm	yes
Electrical installation	yes
Generator	Onan
Start battery	yes
Service battery	yes
Navigation Battery	yes
Bowthruster battery	yes
Battery charger	yes
Shorepower	with cable
Watermaker	yes
Trimtabs	yes

NAVIGATION

Compass	Ritchie
Depth sounder	yes
Depth sounder/log	Simrad
Windset	Simrad
VHF handheld	2 x Simrad RS 87
Autopilot	Simrad AP 20
Rudder angle indicator	yes
Radar	yes
Radar/GPS/plotter	Simrad 2 x 12''' Axiom 12" on fly
EPIRB	yes
Navigation lights	yes
Searchlight	yes
Loudhailer	yes

EQUIPMENT

Bimini	yes
Window cover	yes
Gangway	yes



Anchor	yes
Anchor chain	yes
Windlass	yes
Railing side opening gates	yes
Life raft (pers)	yes
Fenders	yes
Mooring lines	yes
Radio-cd player	yes
Speakers in salon	yes
Clock - barometer	yes
Fire extinguisher	yes



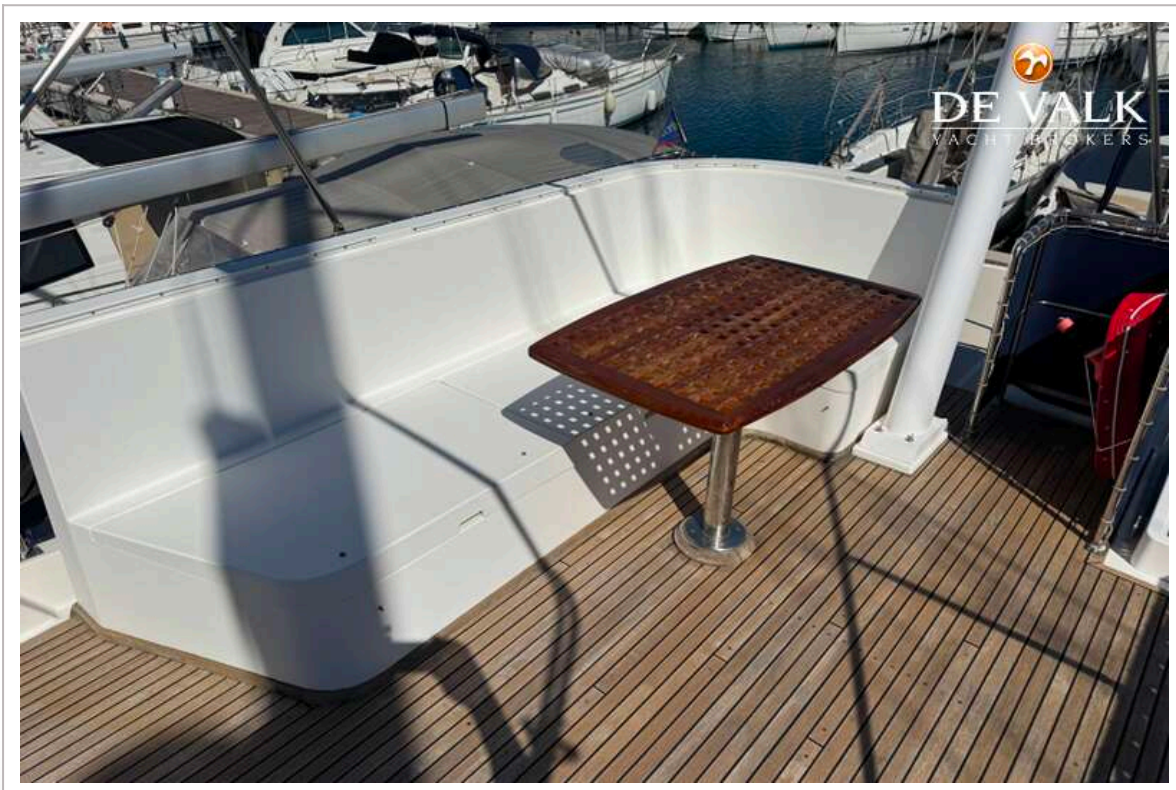
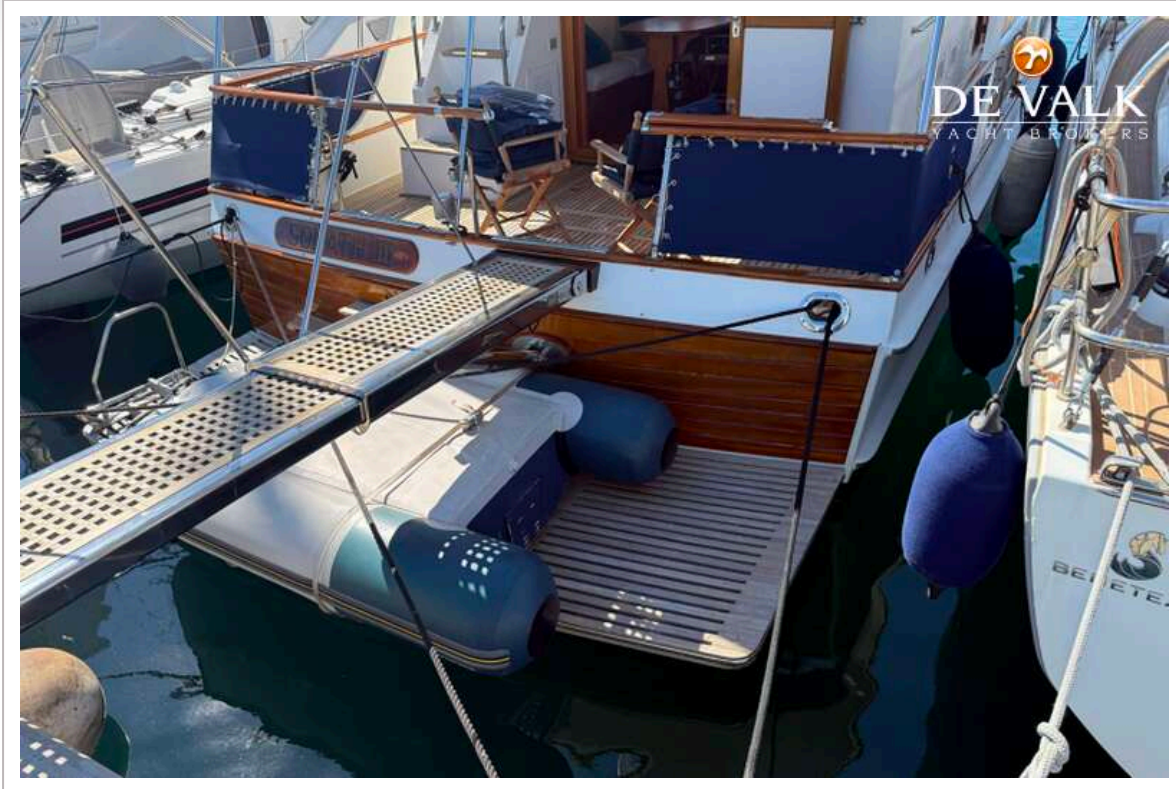
GRAND BANKS 46 EUROPA



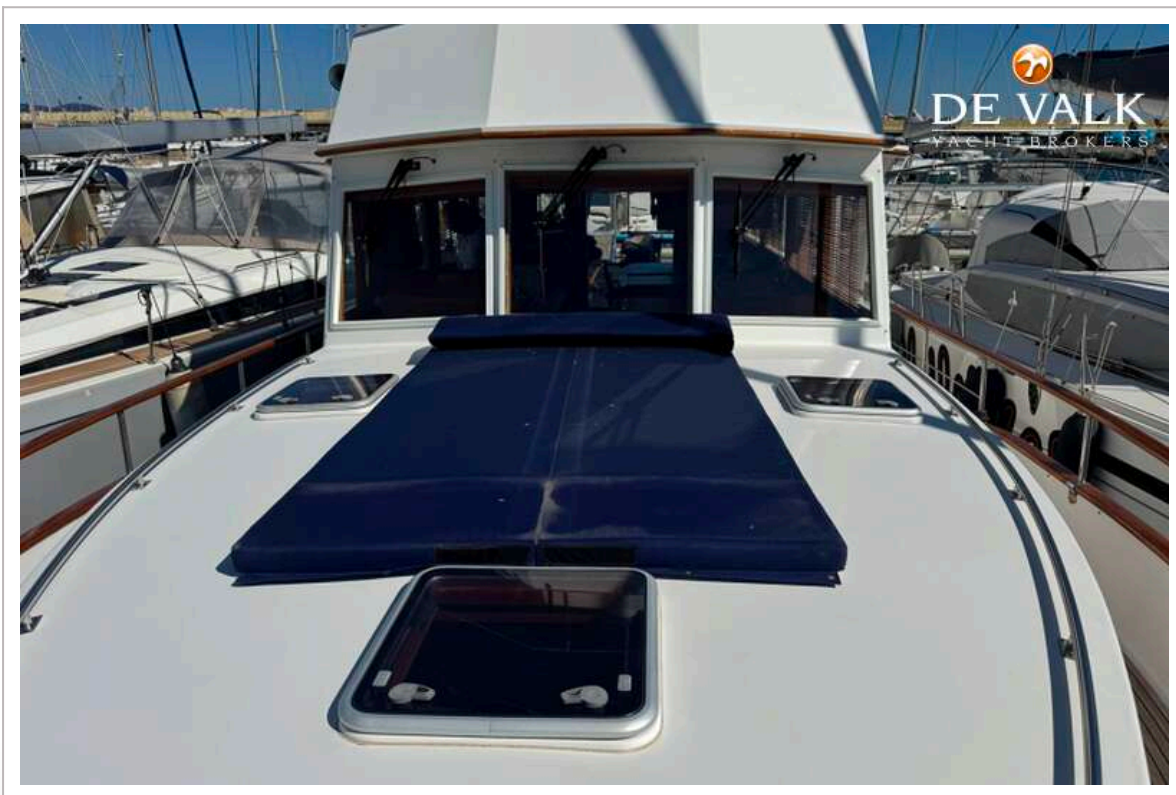
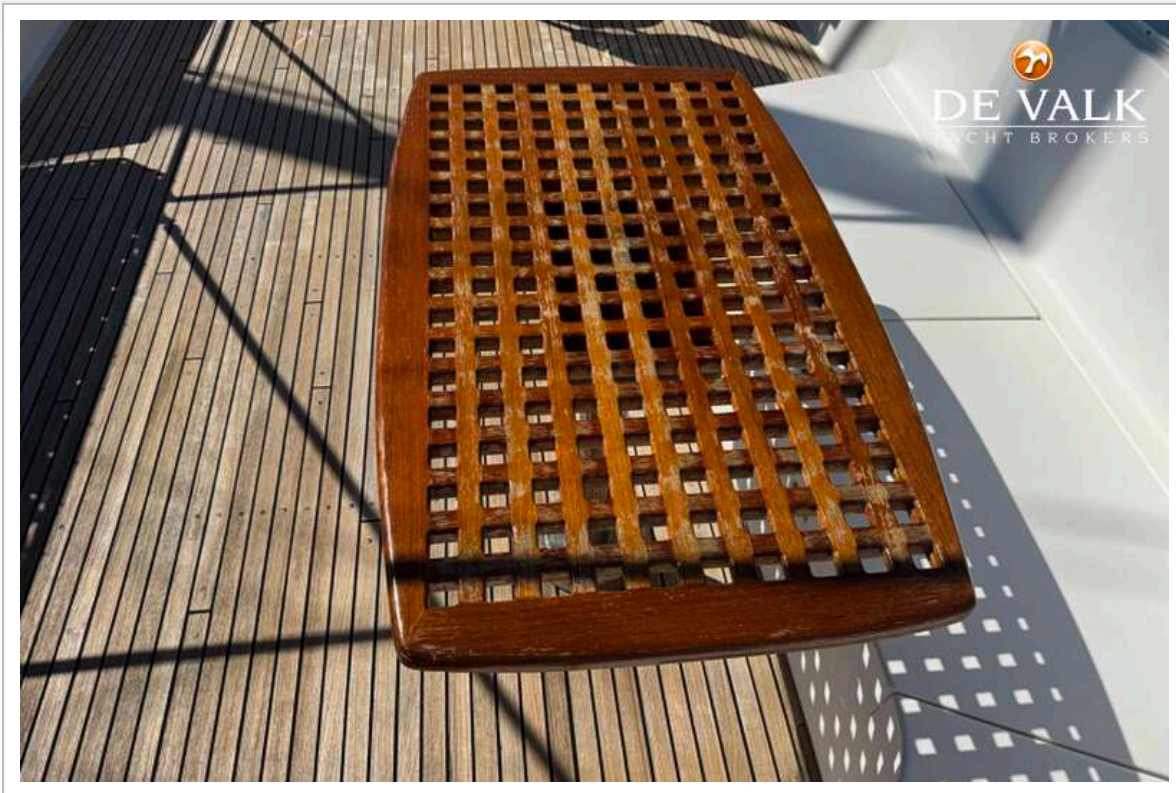
GRAND BANKS 46 EUROPA



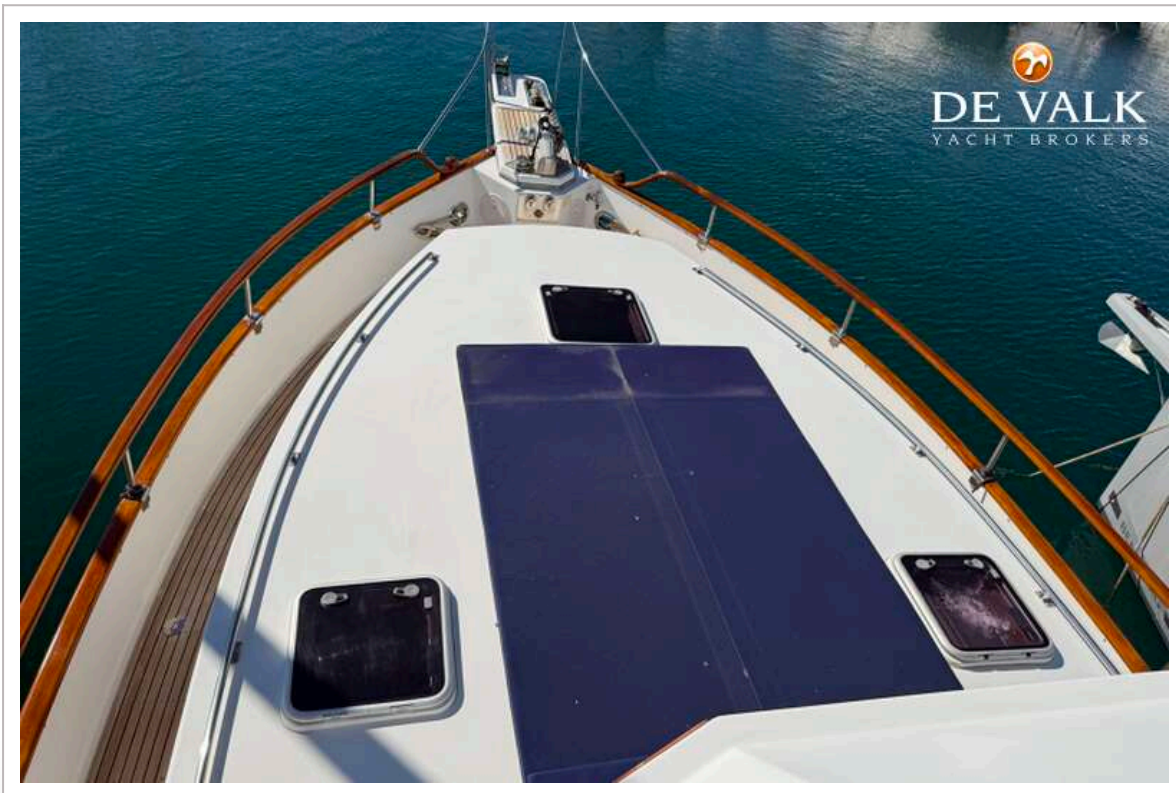
GRAND BANKS 46 EUROPA



GRAND BANKS 46 EUROPA



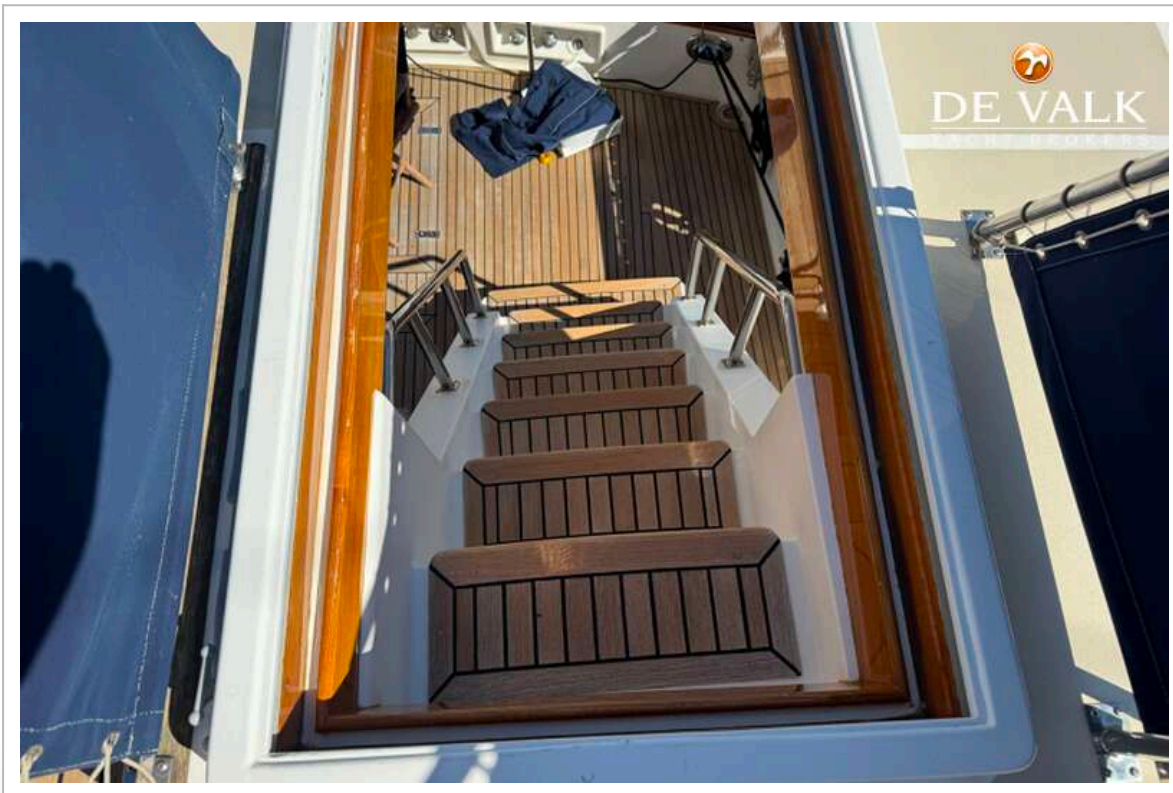
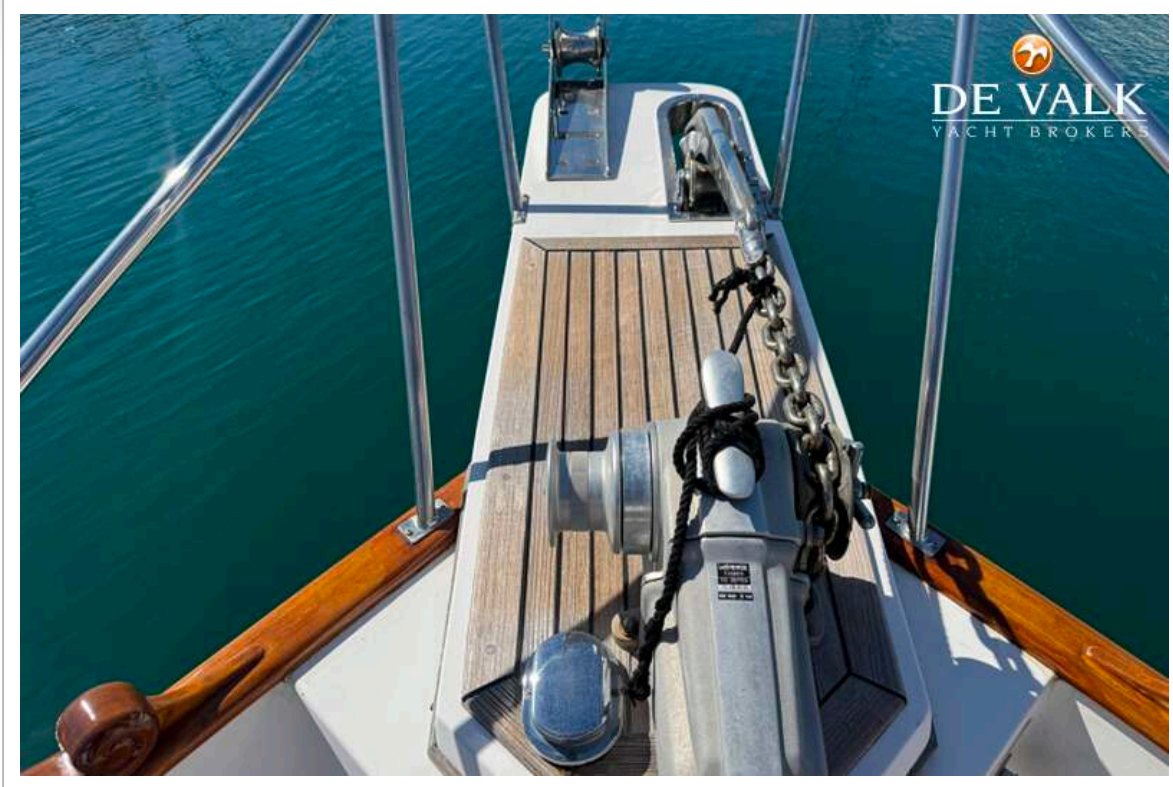
GRAND BANKS 46 EUROPA



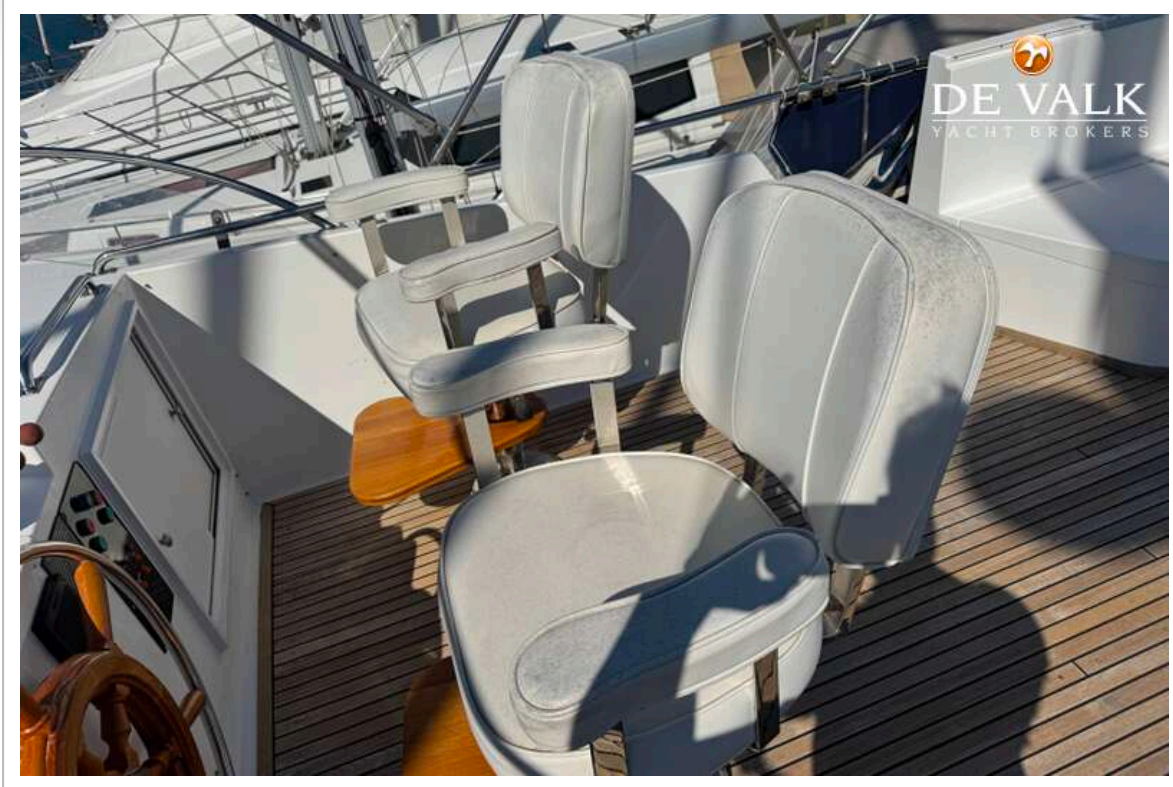
GRAND BANKS 46 EUROPA

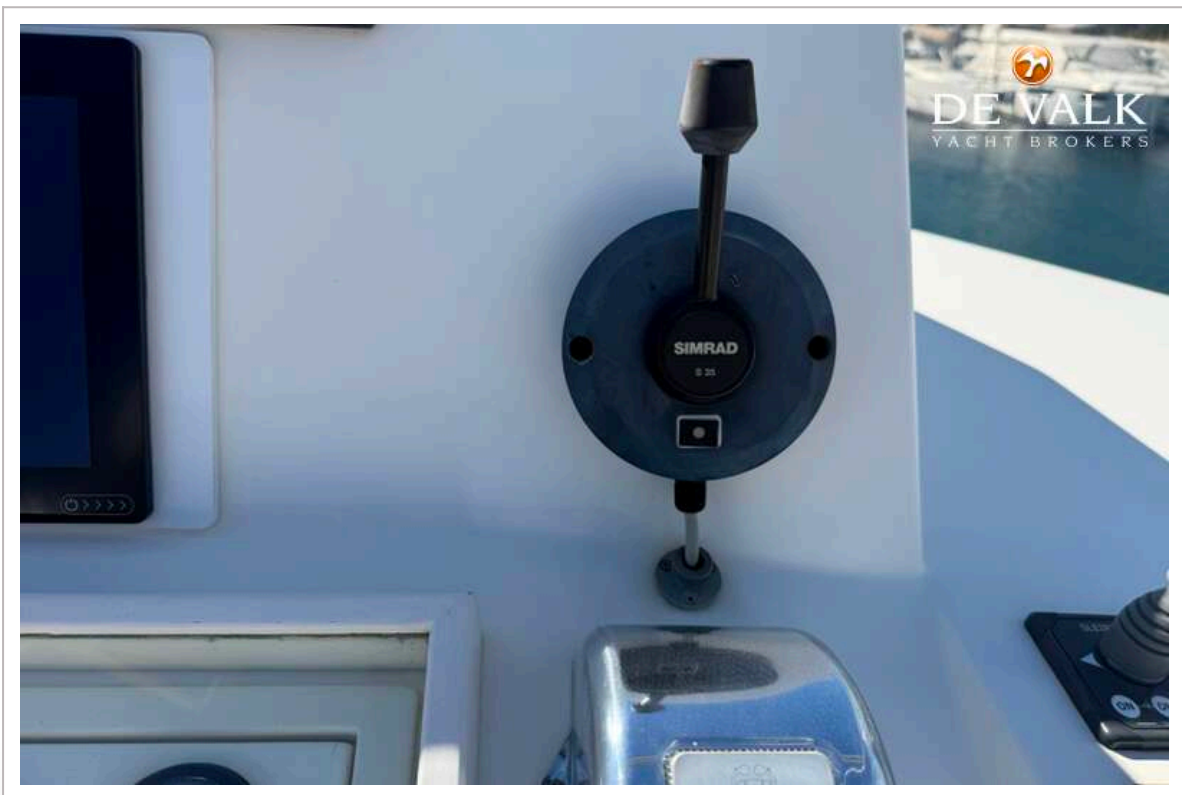


GRAND BANKS 46 EUROPA

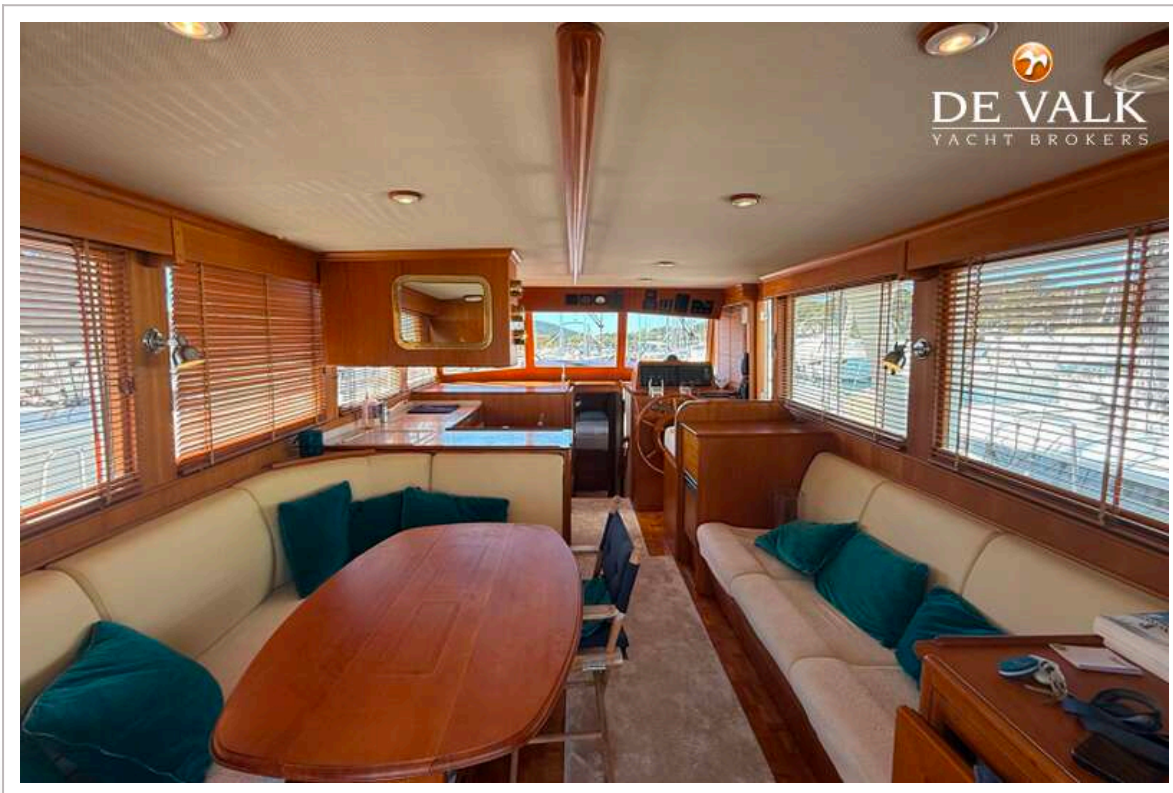
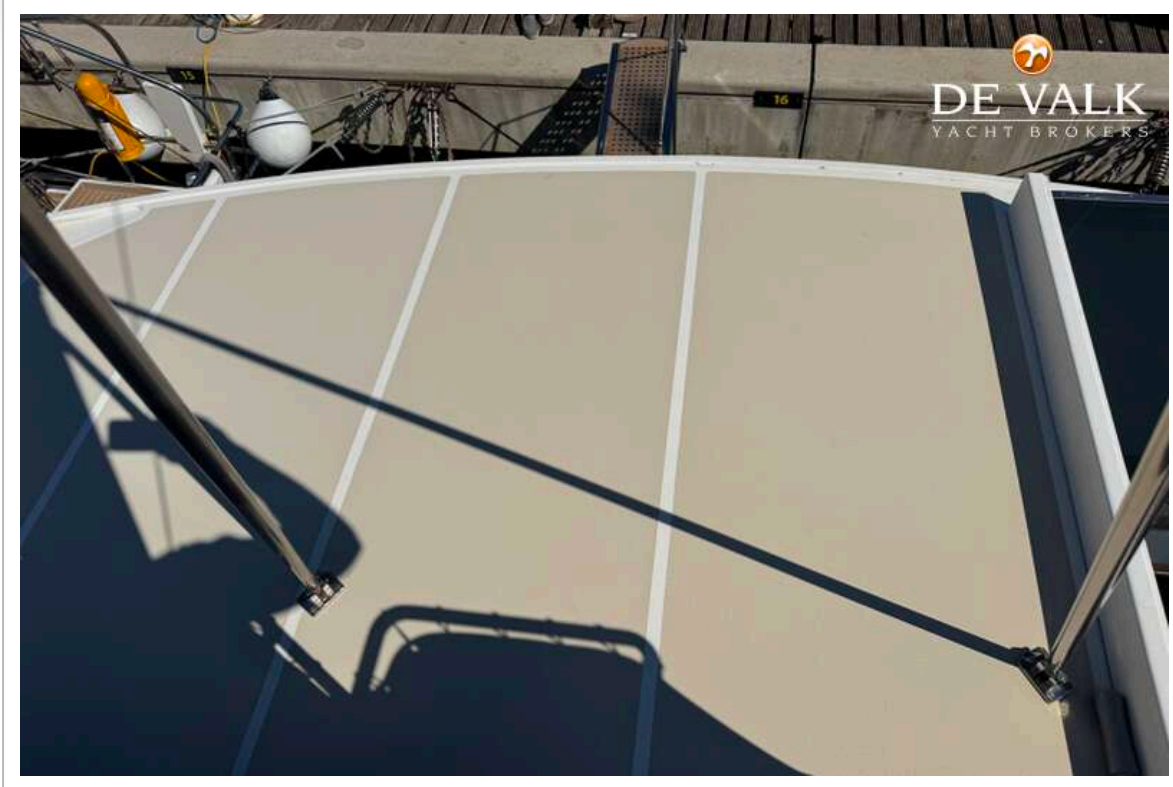


GRAND BANKS 46 EUROPA

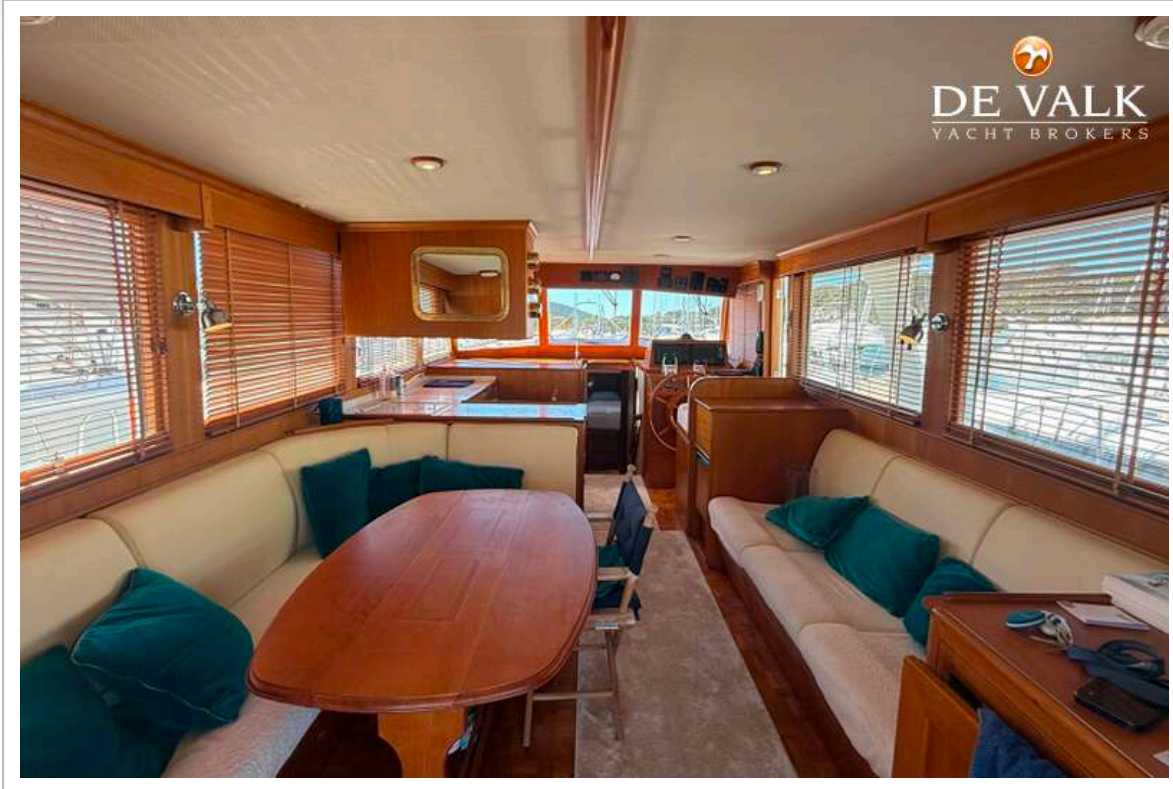




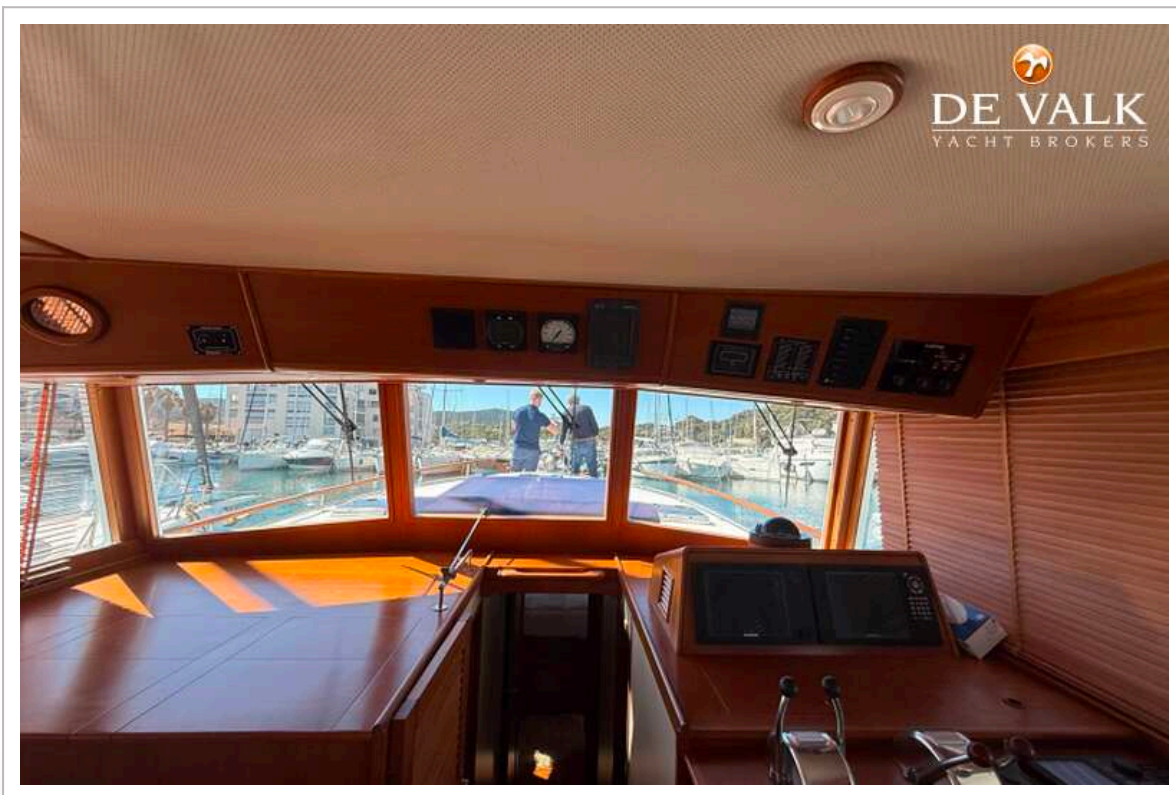
GRAND BANKS 46 EUROPA



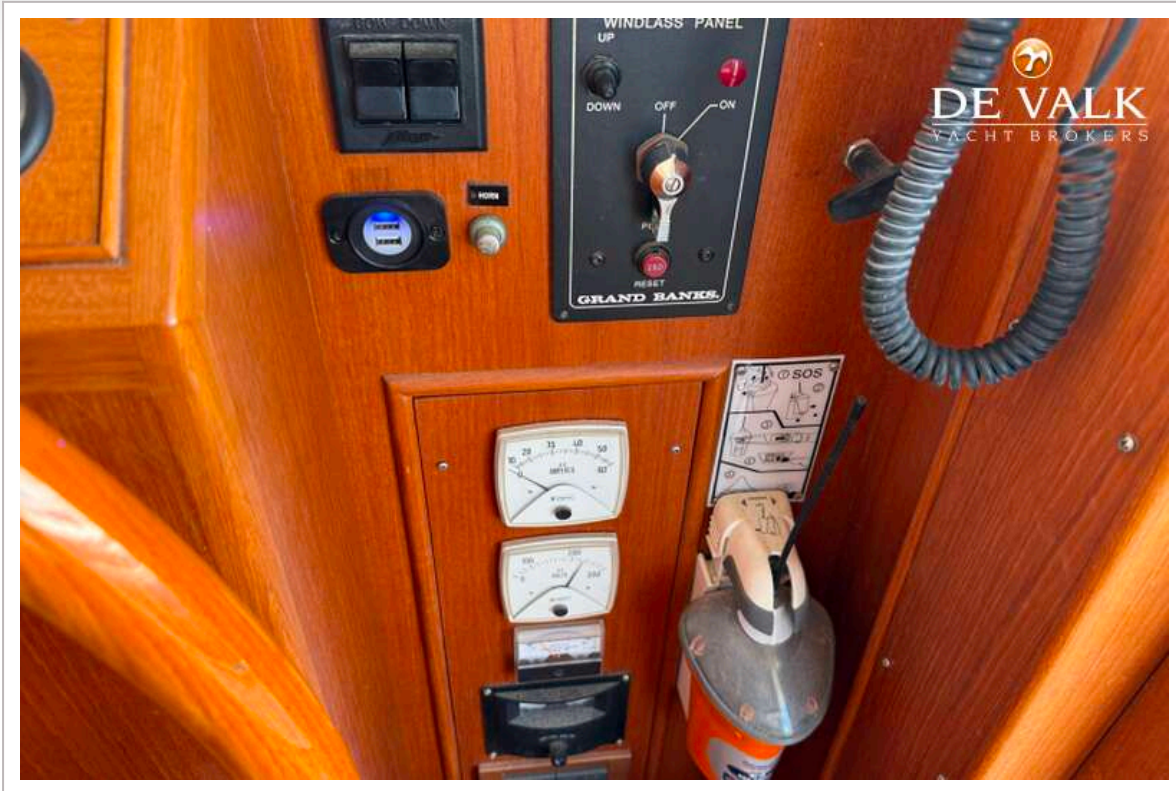
GRAND BANKS 46 EUROPA



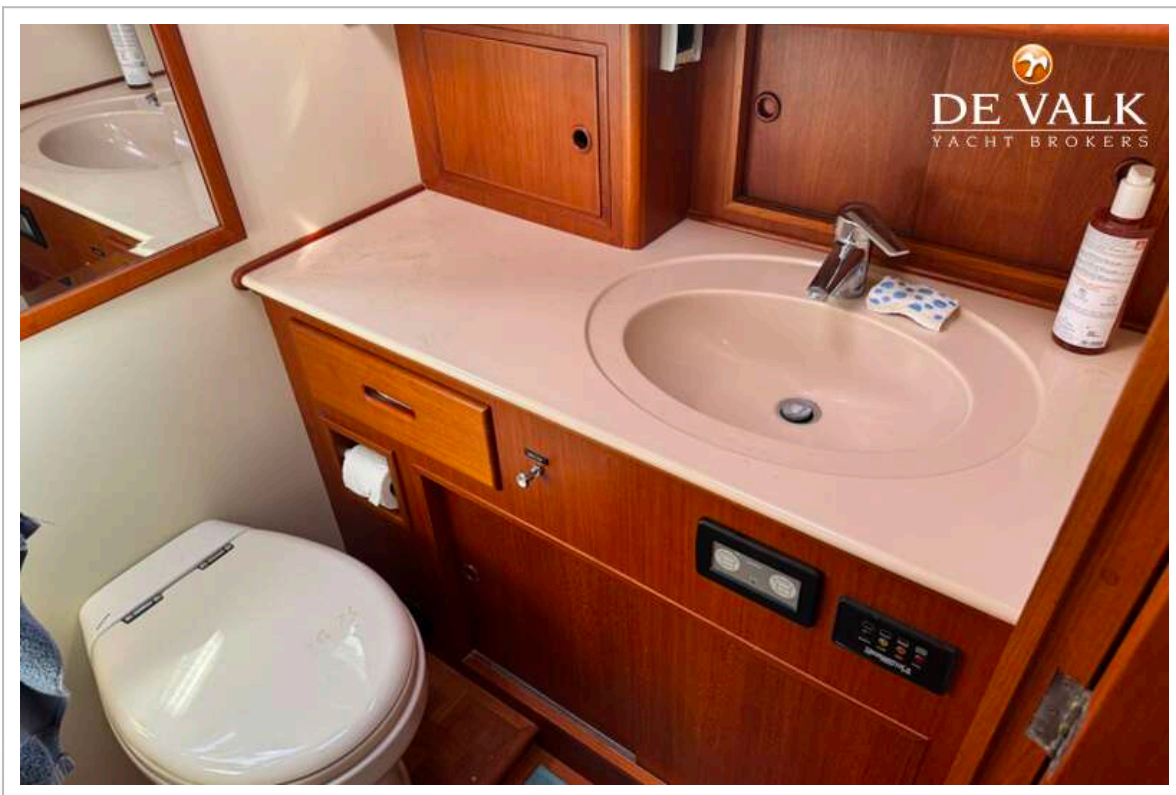
GRAND BANKS 46 EUROPA



GRAND BANKS 46 EUROPA



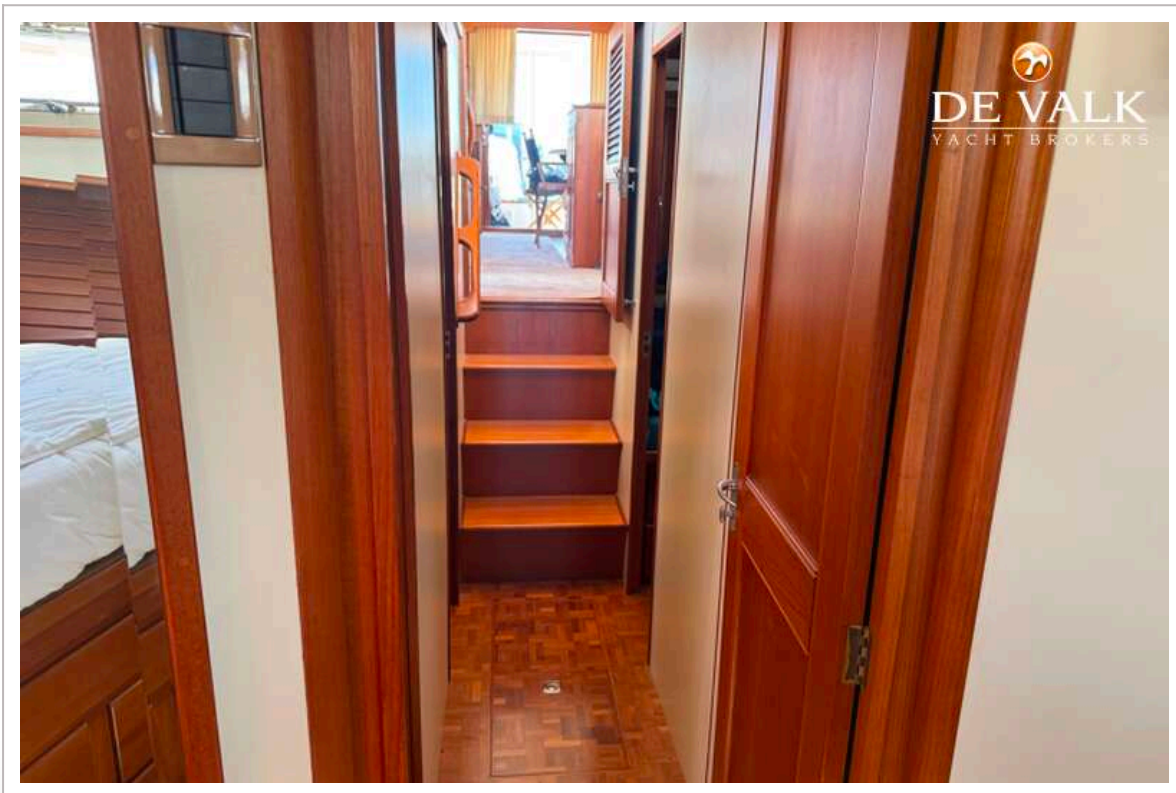
GRAND BANKS 46 EUROPA

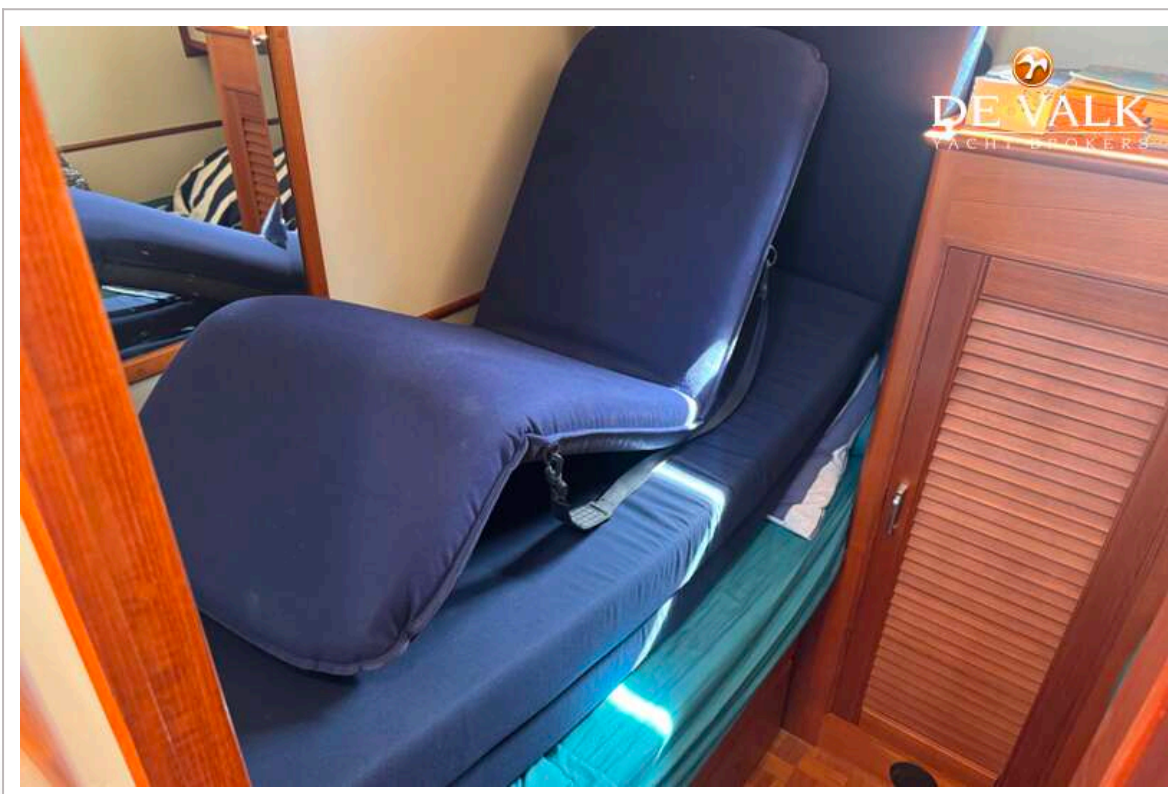
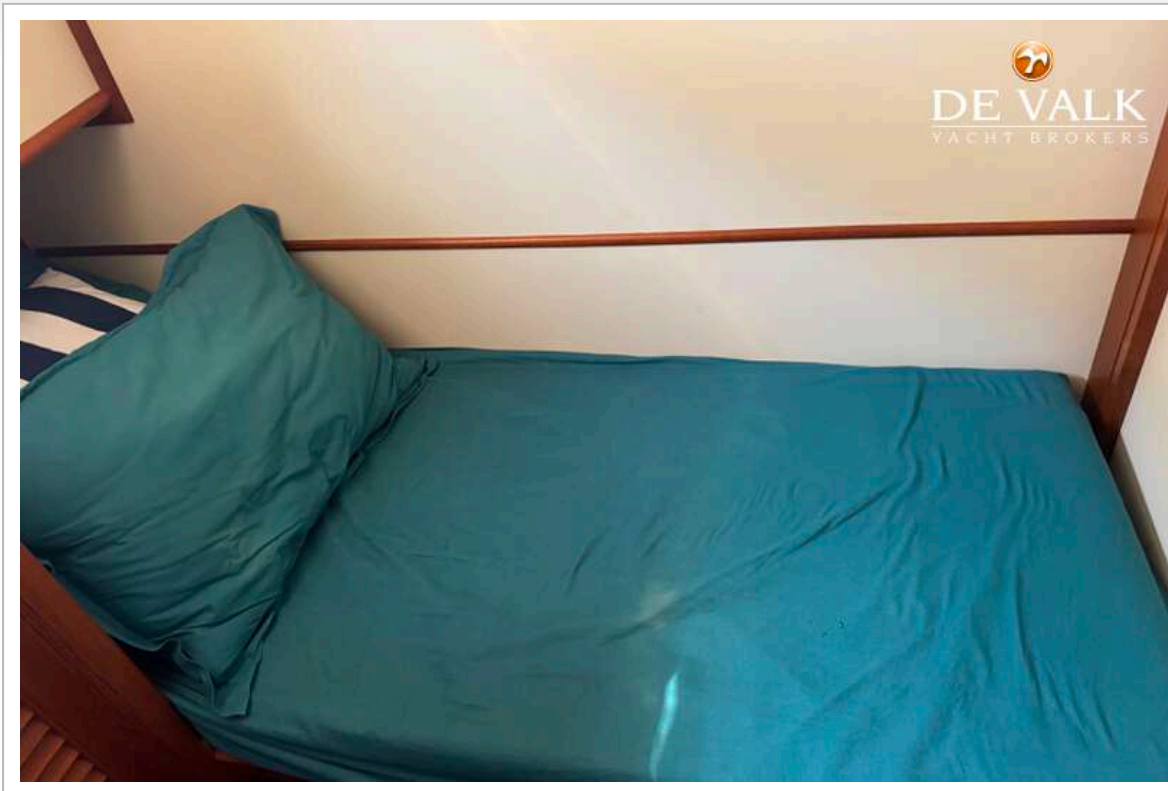


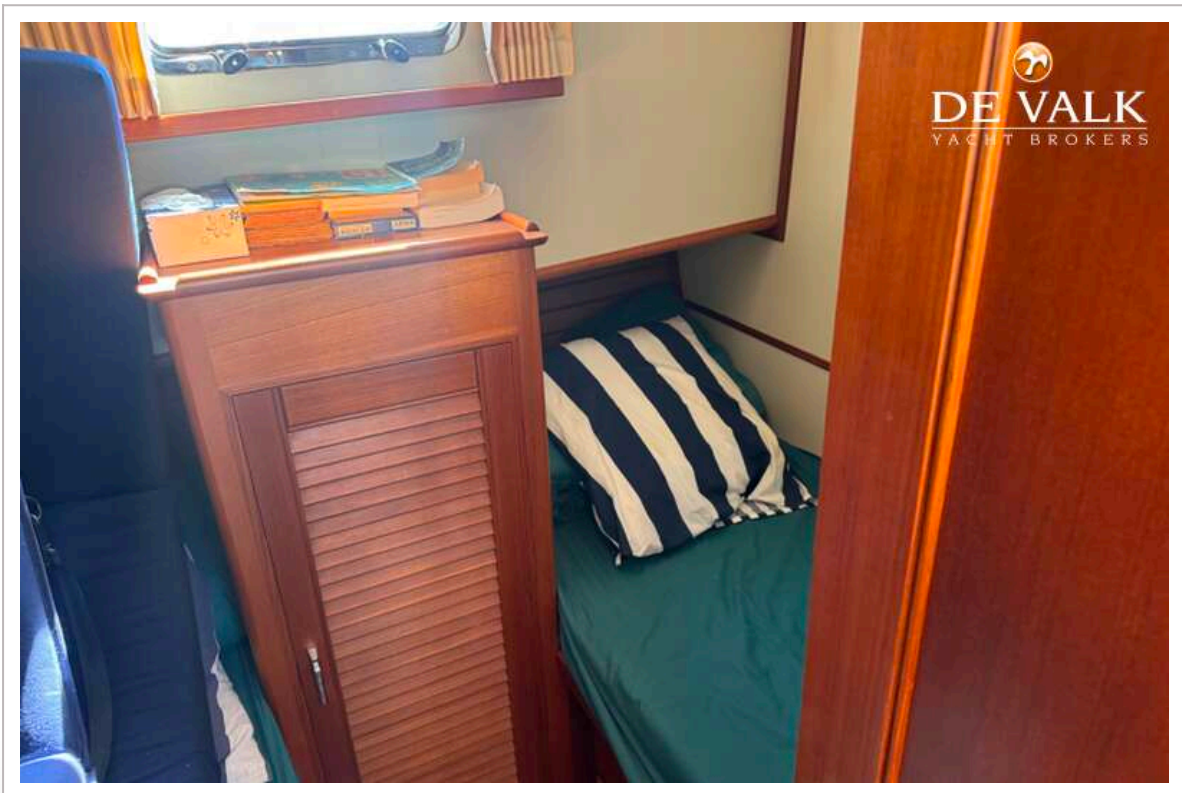
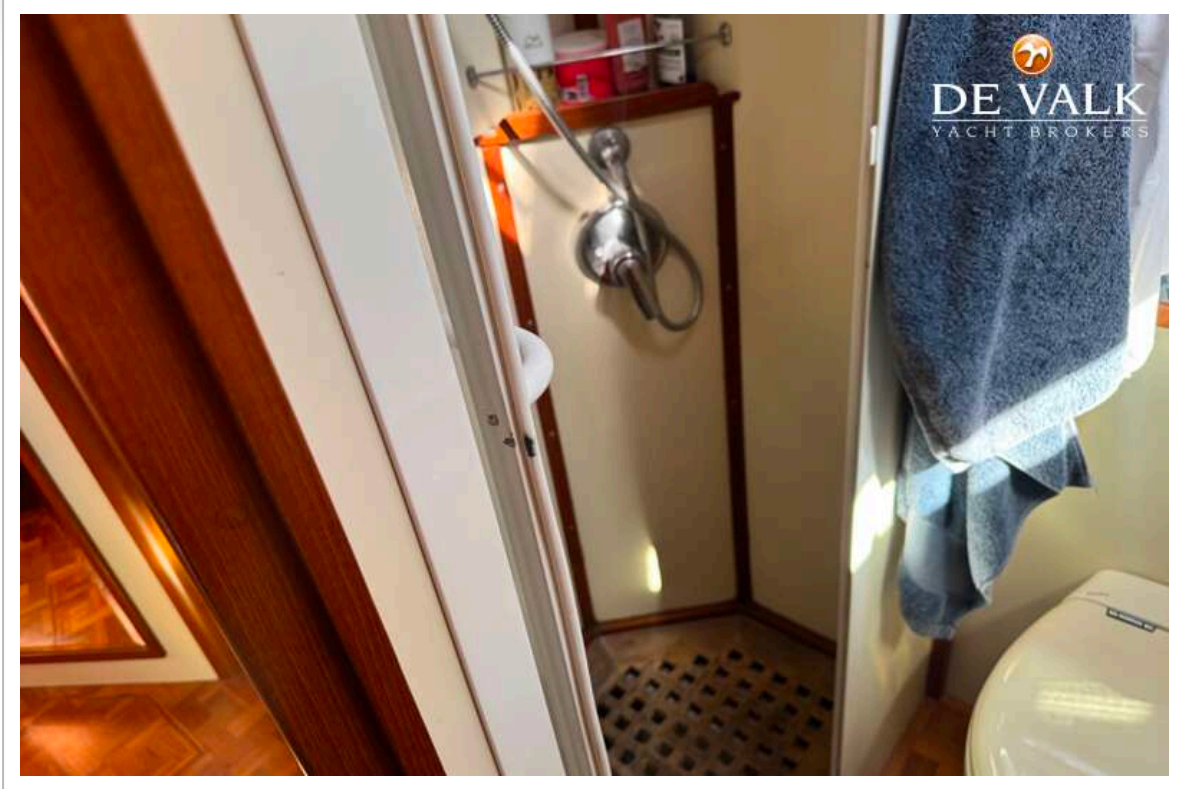
GRAND BANKS 46 EUROPA



GRAND BANKS 46 EUROPA







GRAND BANKS 46 EUROPA

