



ROMANZA MOTORSAILER 12 MS



DE VALK  
YACHT BROKERS

# ROMANZA MOTORSAILER 12 MS

## BROKER'S COMMENTS

The Romanza motor-sailer is built by Van der Torre in the Netherlands, strong and well-sailing yacht. 130 HP engine, bow thruster, ketch rigged with steering wheel inside and outside. The yacht was overhauled extensively in 2014 and in 2021; engine / rigging / electrics / hull painted etc . Provided with excellent navigation instruments, good power supplies; generator/solar panels . Lots of space inside, a cozy lounge/wheelhouse, spacious dinette with kitchen and large sleeping cabins.

*Joris van de Rijt*

## SPECIFICATIONS

<b>Dimensions</b>	11.20 x 3.70 x 1.50 (m)	<b>Builder</b>	Van der Torre Jachtbouw / Ammerstol
<b>Built</b>	1973	<b>Cabins</b>	2
<b>Material</b>	Steel	<b>Berths</b>	4
<b>Engine(s)</b>	1 x Ford Lehman 2725E diesel	<b>Hp/Kw</b>	130.00 (hp), 95.68 (kw)
<b>Asking price</b>	€ 79.000 (VAT Paid)	<b>Lying</b>	elsewhere / Not at sales office

## CONTACT

<b>Sales office</b>	De Valk Sint Annaland B.V.	<b>Telephone</b>	+31 166 601 000
<b>Address</b>	Koelhuisweg 4 4697 RM Sint Annaland NL	<b>E-mail</b>	sintannaland@devalk.nl

## DISCLAIMER

These particulars are given in good faith as supplied but cannot be guaranteed.



# ROMANZA MOTORSAILER 12 MS

## GENERAL

<b>Model</b>	ROMANZA MOTORSAILER 12 MS
<b>Type</b>	motorsailer
<b>LOA (m)</b>	11,20
<b>Beam (m)</b>	3,70
<b>Draft (m)</b>	1,50
<b>Air draft (m)</b>	11,55
<b>Headroom (m)</b>	1,92
<b>Year built</b>	1973
<b>Builder</b>	Van der Torre Jachtbouw / Ammerstol
<b>Country</b>	The Netherlands
<b>Displacement (t)</b>	20
<b>Hull material</b>	steel
<b>Hull colour</b>	green
<b>Hull shape</b>	S-bilged
<b>Keel type</b>	long keel
<b>Superstructure material</b>	steel
<b>Rubbing strake</b>	steel
<b>Deck material</b>	steel
<b>Deck finish</b>	non-skid paint
<b>Superstructure deck finish</b>	paint
<b>Cockpit deck finish</b>	non-skid paint
<b>Antifouling (year)</b>	2024
<b>Window frame</b>	aluminium Hora, 2 opening windows
<b>Window material</b>	tempered glass
<b>Portholes</b>	brass
<b>Insulation</b>	yes
<b>Fuel tank (litre)</b>	steel 1000
<b>Fuel tank 2 (litre)</b>	steel 1000
<b>Level indicator (fuel tank)</b>	gauge glass
<b>Freshwater tank (litre)</b>	600



# ROMANZA MOTORSAILER 12 MS

<b>Blackwater tank (litre)</b>	60
<b>Blackwater tank extraction</b>	deck extraction + uw line
<b>Wheel steering</b>	hydraulic
<b>Inside helm position</b>	yes
<b>Outside helm position</b>	hydraulic
<b>More info on paintwork</b>	Deck & superstructure painted with 2-component paint (2021)

## ACCOMMODATION

<b>Cabins</b>	2
<b>Berths</b>	4
<b>Interior</b>	teak
<b>Layout</b>	Two cabins, dinette/galley, pilot-house/saloon, toilet
<b>Floor</b>	wood
<b>Aft deck</b>	yes
<b>Pilot house/deck saloon</b>	yes
<b>Headroom saloon (m)</b>	1,93
<b>Sliding roof</b>	manual Tilt-up roof
<b>Heating</b>	diesel ducted hot air Webasto EVO 40 24V (2022)
<b>Navigation center</b>	yes
<b>Chart table</b>	yes
<b>Aft Cabin</b>	yes
<b>Dinette</b>	yes
<b>Galley</b>	yes
<b>Countertop</b>	plastic
<b>Sink</b>	stainless steel
<b>Cooker</b>	calor gas Gimeg 4-pits (1 burner not working)
<b>Fridge</b>	Indel B / 24V with freezer compartment
<b>Hot water system</b>	220V + engine
<b>Water pressure system</b>	electrical
<b>Owners cabin</b>	double bed
<b>Bed length (m)</b>	2,00 x 1,45 (enlarged by the current owner)



# ROMANZA MOTORSAILER 12 MS

Wardrobe	hanging/drawers/shelves
Toilet	en suite
Toilet system	electric Jabco (2021)
Wash basin	at the toilet
Guest cabin 1	v-bed
Bed length (m)	2,10 x 0,76
Wardrobe	shelves

## MACHINERY

No of engines	1
Make	Ford Lehman
Type	2725E
HP	130
kW	95.68
Fuel	diesel
Year of overhaul	By official engine overhaul company for Euro 9,600. 2014
Maximum speed (kn)	7
Cruising speed (kn)	6
Engine hours	617
Engine cooling system	closed keelcooling
Drive	shaft
Shaft seal	yes
Engine controls	bowden cable
Gearbox	hydraulic Velvet Drive
Bowthruster	electric VETUS 75 KGF 24V (2012)
Exhaust	dry
Thrust bearing	yes
Propeller type	fixed
Propeller shaft material	stainless steel
Shaft lubrication	Packing line
Manual bilge pump	yes



# ROMANZA MOTORSAILER 12 MS

<b>Electric bilge pump</b>	yes
<b>Electrical installation</b>	24/12/230V
<b>Generator</b>	silent separator Fisher Panda 4000 S / 3,8 kVA
<b>Batteries</b>	5
<b>Start battery</b>	2x 115 Ah (2025)
<b>Service battery</b>	2x 225 Ah (2018)
<b>Generator battery</b>	1x 66 Ah
<b>Battery monitor</b>	Victron BMV-700
<b>Battery charger</b>	Victron 12V/7A
<b>Inverter</b>	Samlex 24-12V 16A
<b>Battery charger/inverter</b>	Victron Quattro 24/3000/70 (2012)
<b>Solar panel</b>	2x 51W
<b>Shorepower</b>	with cable 220V System renewed (2014)

## NAVIGATION

<b>Electric compass</b>	Raytheon ST 40
<b>Depth sounder/log</b>	NASA Clipper Duet
<b>Repeater</b>	Simrad
<b>VHF</b>	yes
<b>VHF handheld</b>	yes
<b>Autopilot</b>	Simrad
<b>Plotter/GPS</b>	touchscreen Simrad NSS7
<b>Navtex</b>	Mörer Weather Infobox Wib2
<b>AIS receiver</b>	Vesper Marine AIS Watchmate
<b>EPIRB</b>	Battery has expired
<b>Navigation lights</b>	yes

## EQUIPMENT

<b>Cockpit chairs</b>	2 x
<b>Boarding ladder</b>	stainless steel
<b>Anchor</b>	Danforth



# ROMANZA MOTORSAILER 12 MS

Anchor chain	60 mtr.
Windlass	manual
Deck wash	yes
Dinghy	rigid hull
Sea railing	steel
Grab rail (superstructure)	stainless steel
Railing side opening gates	stainless steel
Pushpit	yes
Pulpit	yes
Life raft	Not included
Lifebuoy	yes
Danbuoy	yes
Wiper	2014
Horn	(need to be checked)
Radar reflector	yes
Fenders	yes
Mooring lines	yes
Radio-cd player	yes
Speakers in salon	yes
Clock - barometer	yes
Fire extinguisher	yes
Latest extinguisher survey	Unknown
Extra info	Bosun's chair

## RIGGING

Rigging	ketch
Standing rigging	wire Replaced (2018)
Brand mast	Conispar
Material mast	aluminium
Spreaders	2 sets
Mast lowering system	Stainless steel rotating mast feet



# ROMANZA MOTORSAILER 12 MS

<b>Mainsail</b>	yes
<b>Mainsail cover</b>	yes
<b>Mizzen</b>	yes
<b>Mizzen sailcover</b>	yes
<b>Genoa</b>	(new 2024)
<b>Genoa furler</b>	yes
<b>Stormjib</b>	yes
<b>Reefing System</b>	quick-one-line-reefing
<b>Boomvang</b>	tackle For the main sail
<b>Primary sheet winch</b>	2x
<b>Halyard winches</b>	2x
<b>Extra info</b>	Sails are old, but in good condition, service 2024



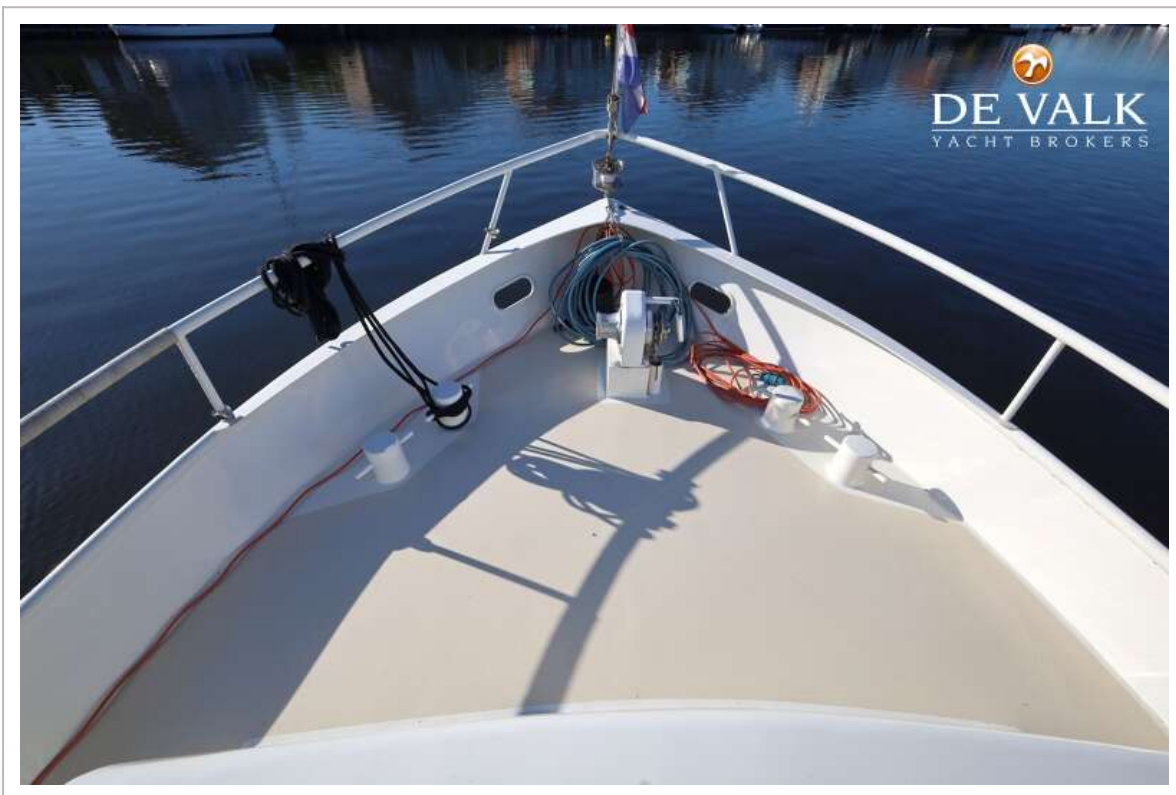
# ROMANZA MOTORSAILER 12 MS



# ROMANZA MOTORSAILER 12 MS



# ROMANZA MOTORSAILER 12 MS



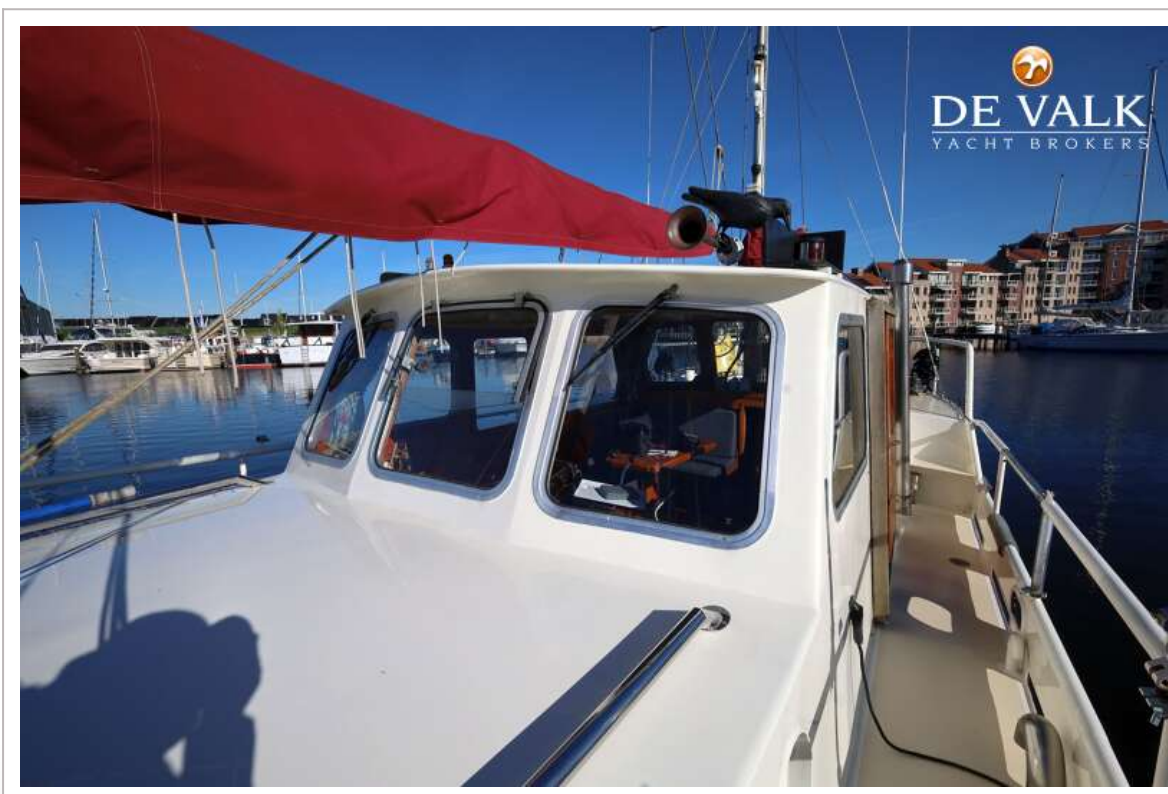
# ROMANZA MOTORSAILER 12 MS



# ROMANZA MOTORSAILER 12 MS



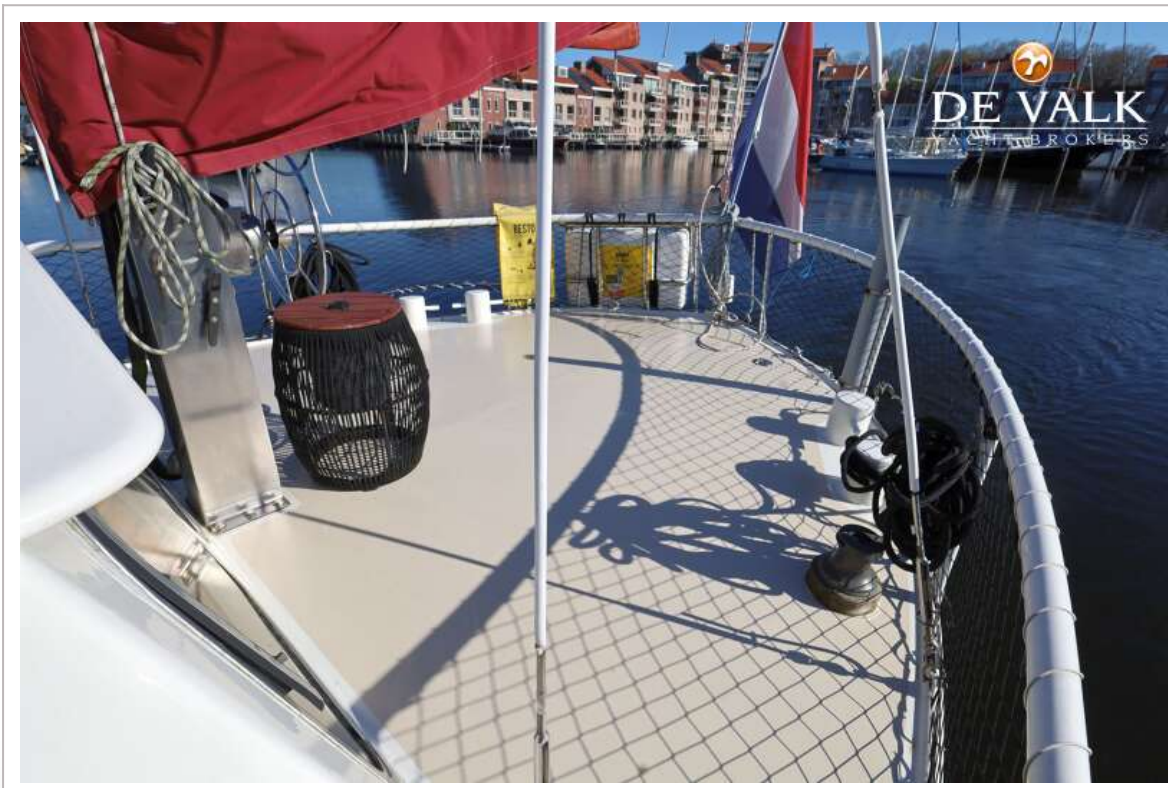
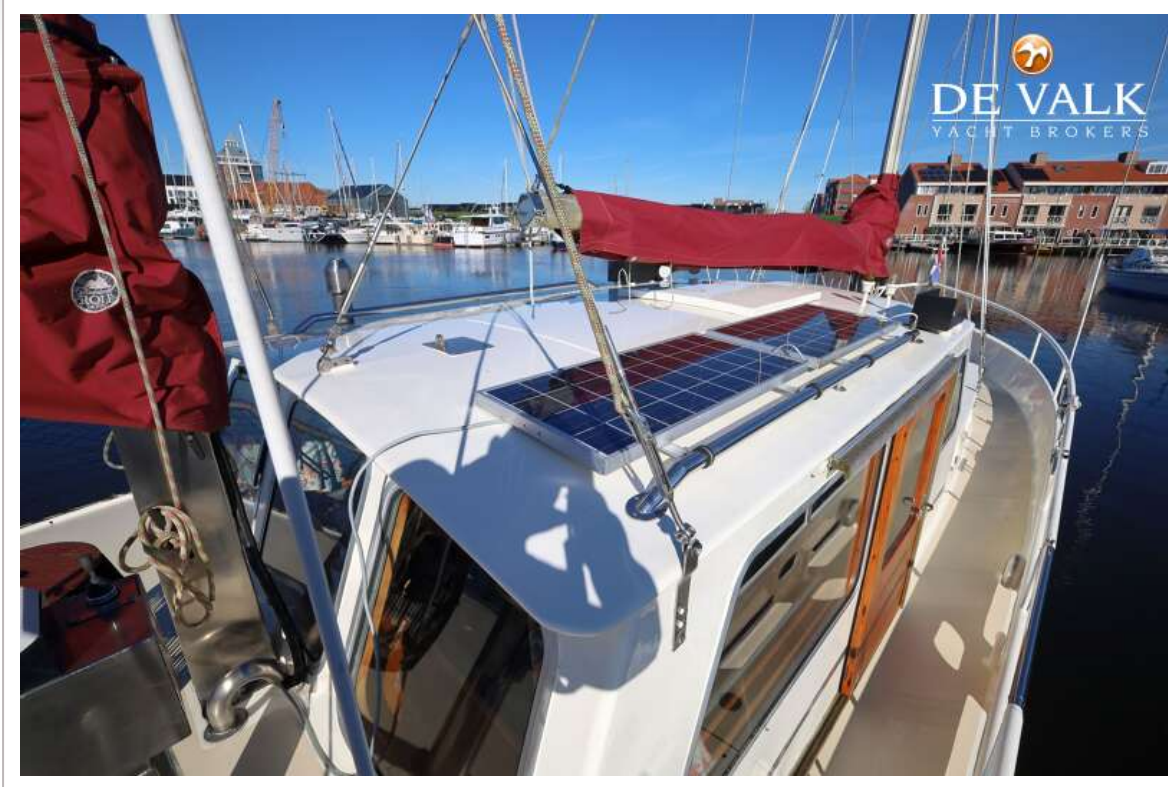
# ROMANZA MOTORSAILER 12 MS



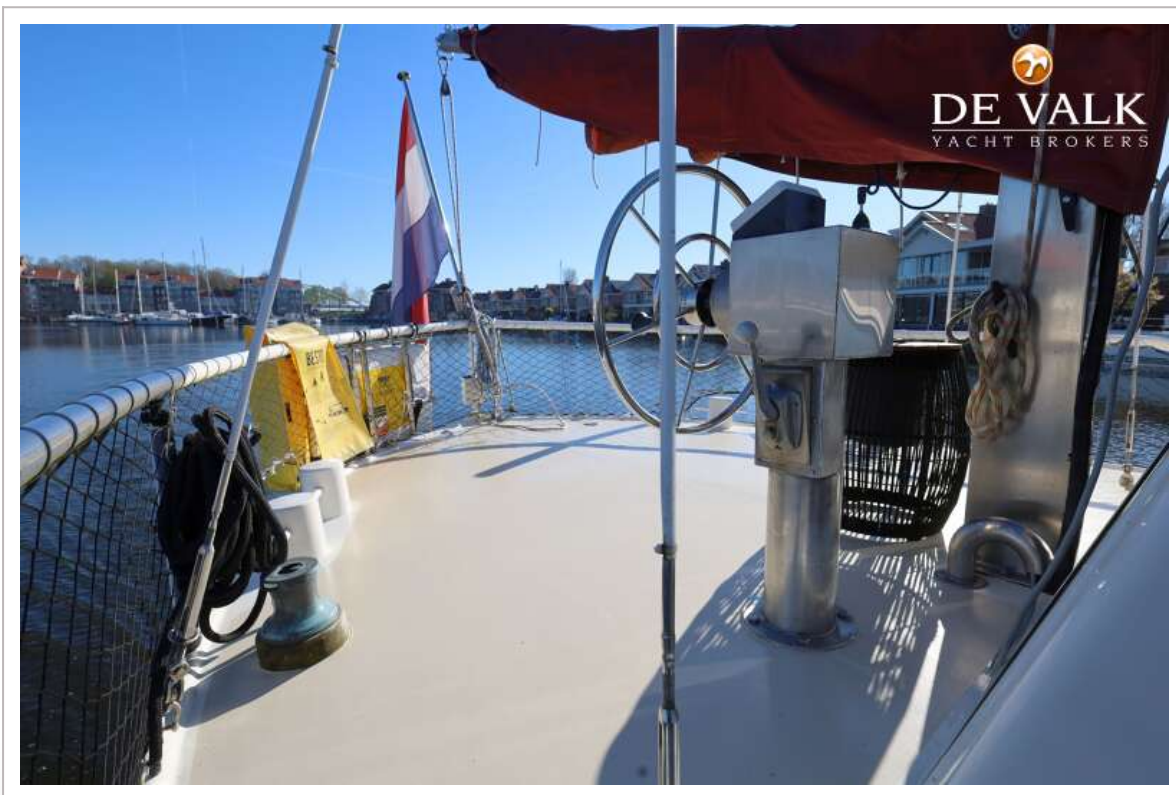
# ROMANZA MOTORSAILER 12 MS



# ROMANZA MOTORSAILER 12 MS



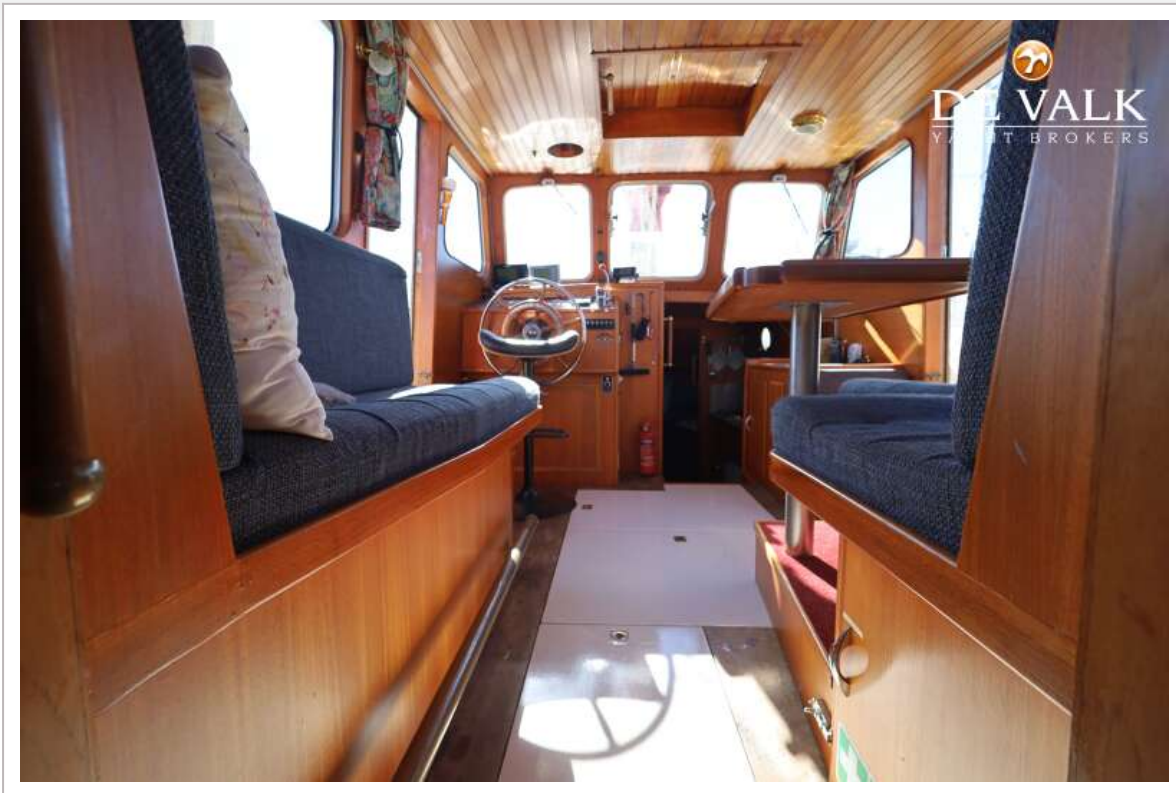
# ROMANZA MOTORSAILER 12 MS



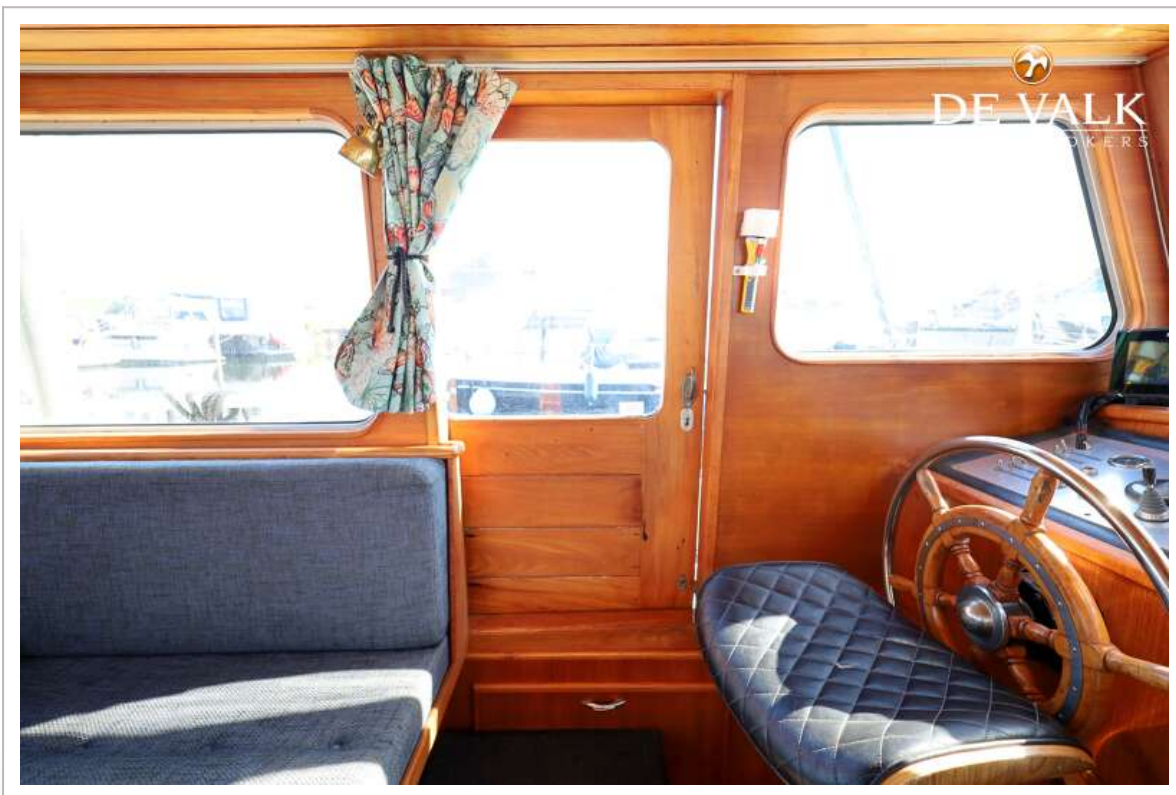
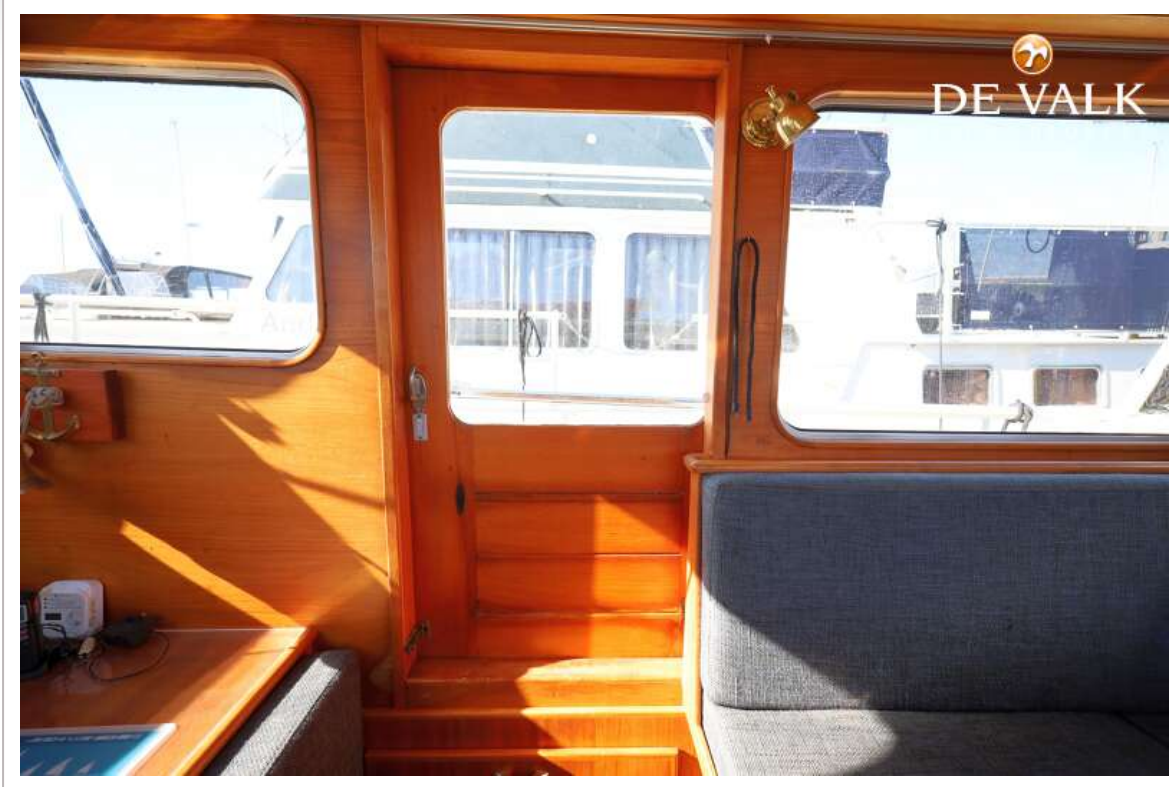
# ROMANZA MOTORSAILER 12 MS



# ROMANZA MOTORSAILER 12 MS



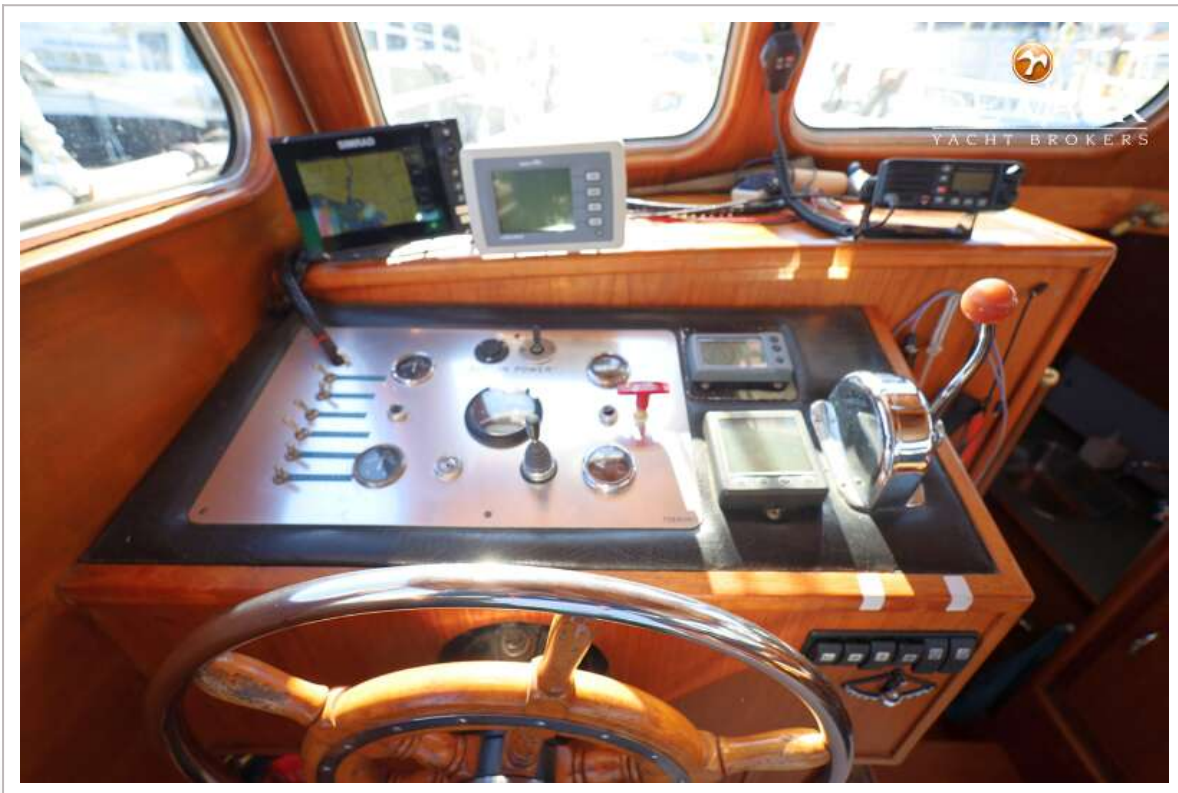
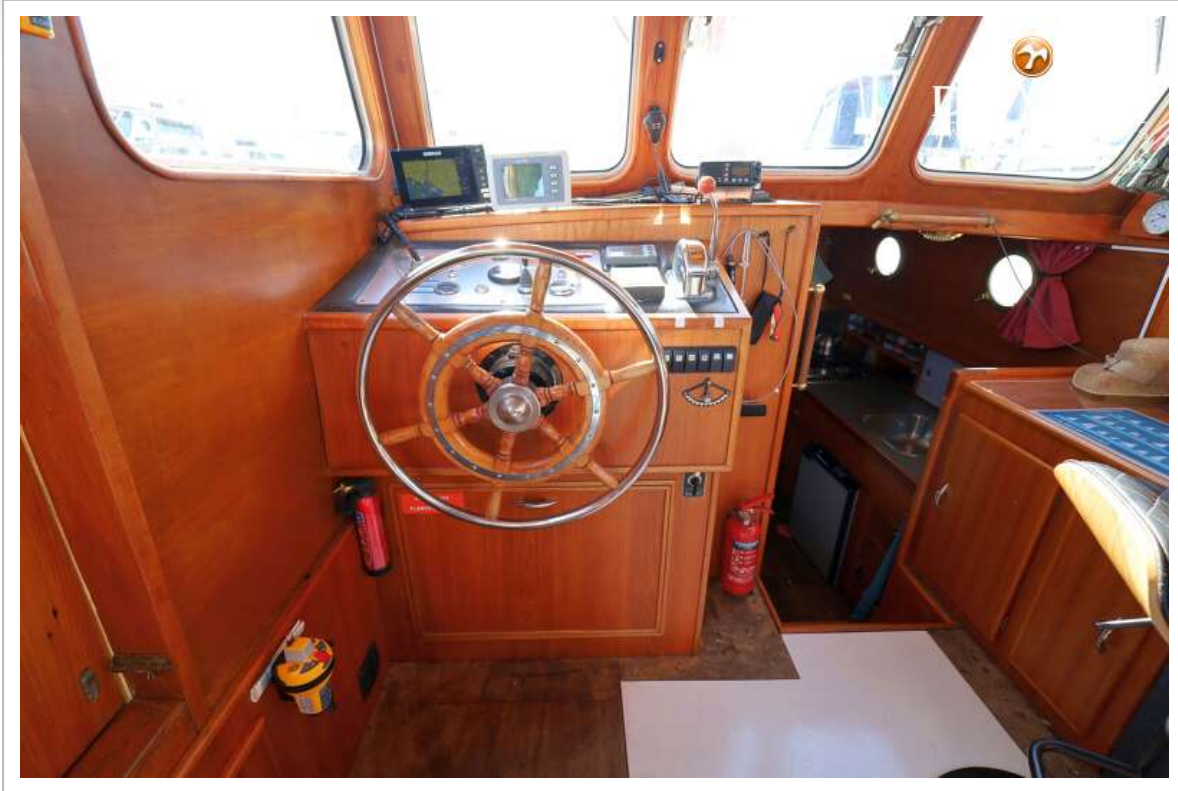
# ROMANZA MOTORSAILER 12 MS



# ROMANZA MOTORSAILER 12 MS



# ROMANZA MOTORSAILER 12 MS



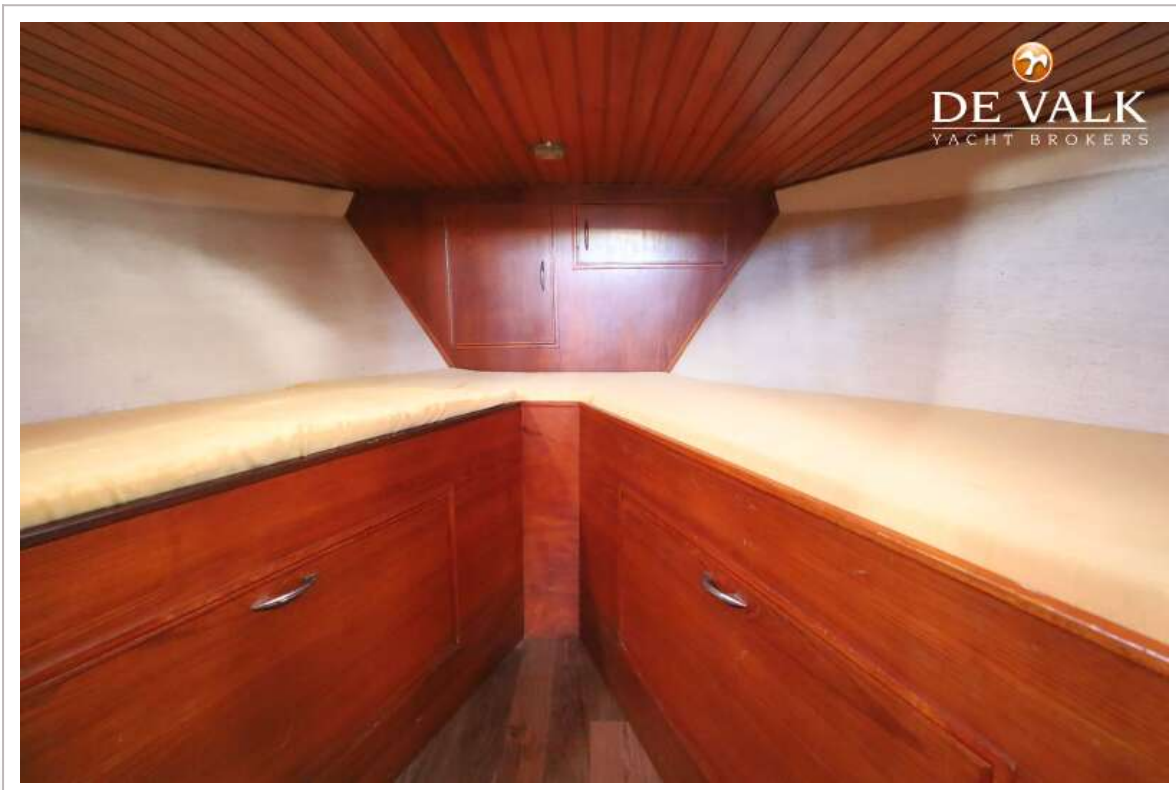
# ROMANZA MOTORSAILER 12 MS



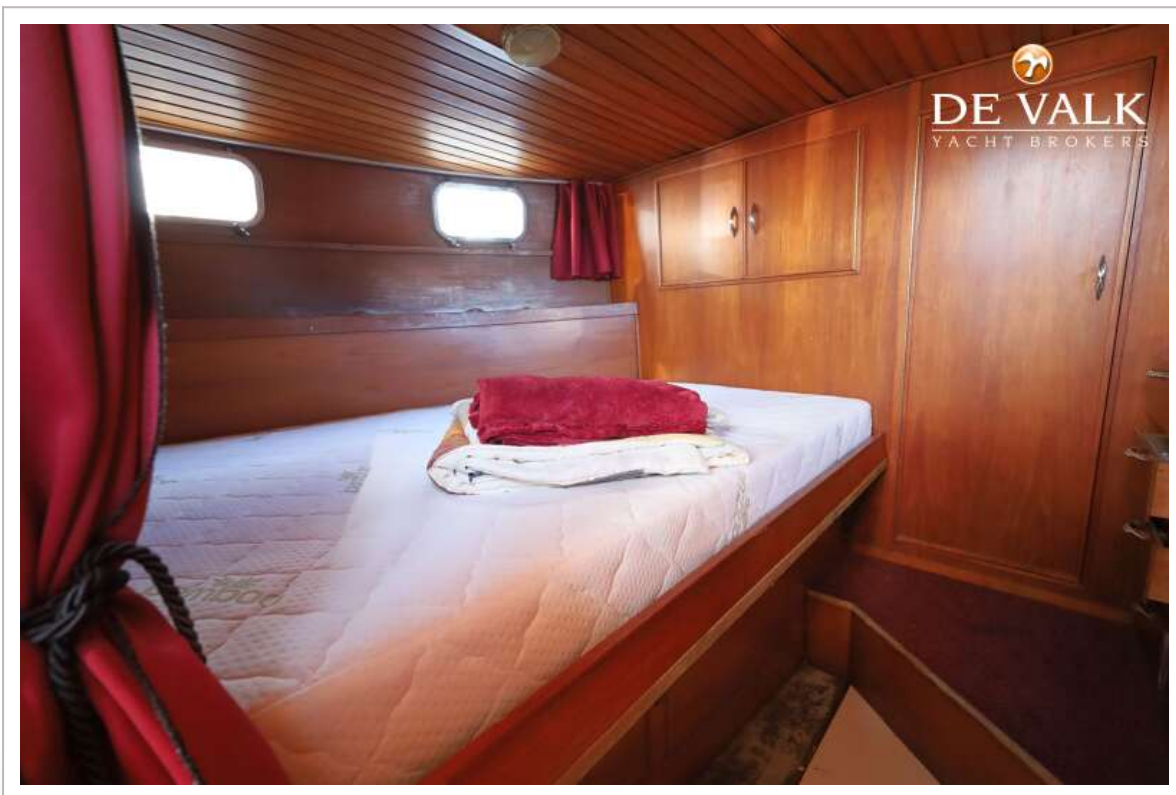
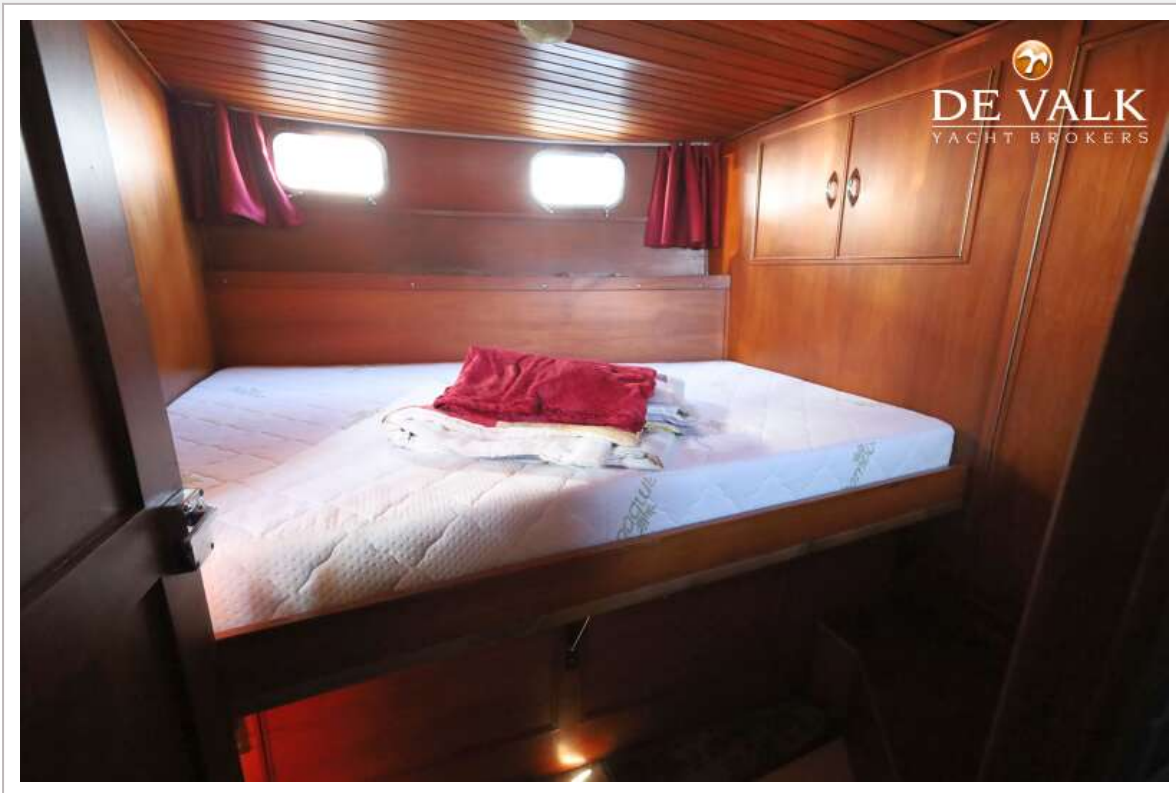
# ROMANZA MOTORSAILER 12 MS



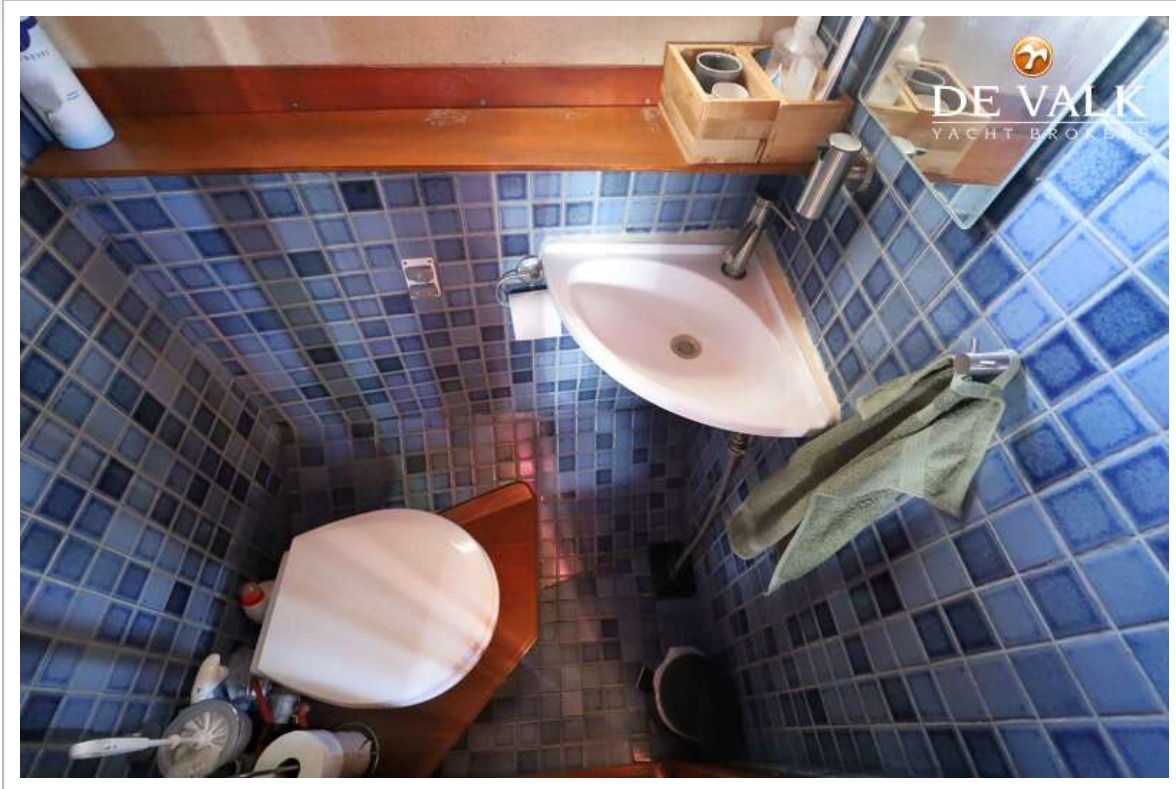
# ROMANZA MOTORSAILER 12 MS



# ROMANZA MOTORSAILER 12 MS



# ROMANZA MOTORSAILER 12 MS



# ROMANZA MOTORSAILER 12 MS

