



DE VALK
YACHT BROKERS



ABSOLUTE 47 HT



DE VALK
YACHT BROKERS

ABSOLUTE 47 HT

BROKER'S COMMENTS

This Absolute 47 HT luxury hard-top motor yacht built in 2011, in very good general condition, from the famous Italian shipyard Absolute Yachts, is a first hand. This Absolute 47 HT is positioned as a stylish, sporty, yet comfortable cruiser, capable of day trips or extended cruises. The "HT" stands for Hard Top, giving it a semi-enclosed cockpit with roof and large windows, with a retractable roof panel. Very well equipped and maintained, this Absolute 47 HT is ready to sail. This boat is also available excl. VAT.

Raoul van der Werf

SPECIFICATIONS

Dimensions	14.61 x 4.19 x 1.10 (m)	Builder	Absolute Yachts
Built	2011	Cabins	2
Material	GRP	Berths	5
Engine(s)	2 x Volvo Penta IPS 600 diesel	Hp/Kw	2 x 435.00 (hp), 320.16 (kw)
Asking price	€ 259.000 (VAT Paid)	Lying	contact Antibes

CONTACT

Sales office	De Valk Antibes	Telephone	+33 492 91 0202
Address	2, Avenue de Verdun 06600 Antibes FR	E-mail	antibes@devalk.nl

DISCLAIMER

These particulars are given in good faith as supplied but cannot be guaranteed.



ABSOLUTE 47 HT

GENERAL

Model	ABSOLUTE 47 HT
Type	motor yacht
LOA (m)	14,61
Beam (m)	4,19
Draft (m)	1,10
Year built	2011
Builder	Absolute Yachts
Country	Italy
Displacement (t)	14
CE norm	B
Hull material	GRP
Hull colour	blue
Hull shape	deep-V
Superstructure material	GRP
Cockpit deck finish	teak
Radar arch	non collapsible
Fuel tank (litre)	1100 L
Level indicator (fuel tank)	yes
Freshwater tank (litre)	400 L
Blackwater tank (litre)	yes
Level indicator (blackwater)	yes
Wheel steering	electric
Inside helm position	yes

ACCOMMODATION

Cabins	2
Berths	5
Saloon	yes
Air-conditioning	reverse cycle airco
Navigation center	yes



ABSOLUTE 47 HT

Galley	yes
Countertop	corian
Sink	corian
Cooker	yes
Oven	yes
Microwave	yes
Fridge	yes
Freezer	yes
Hot water system	yes
Water pressure system	yes
Hot water tap	yes
Ice maker	yes
Owners cabin	double bed
Bed length (m)	2 m
Wardrobe	yes
Bathroom	en suite
Toilet	yes
Toilet system	electric
Wash basin	yes
Shower	yes
Guest cabin 1	double bed
Bed length (m)	2m
Wardrobe	drawers and shelves
Bathroom	en suite
Toilet	yes
Toilet system	electric
Wash basin	yes
Shower	yes

MACHINERY

No of engines	2
---------------	---



ABSOLUTE 47 HT

Make	Volvo Penta
Type	IPS 600
HP	435
kW	320.16
Fuel	diesel
Maximum speed (kn)	35
Cruising speed (kn)	24
Engine hours	60 and 975
Engine cooling system	freshwater heat exchanger
Engine controls	electrical Joy stick
Bowthruster	yes
Manual bilge pump	yes
Electric bilge pump	yes
Bilge alarm	yes
Generator	yes
Batteries	yes
Start battery	yes
Service battery	2021
Navigation Battery	yes
Electric engine battery	2024
Generator battery	MASE / 400 Hrs
Bowthruster battery	yes
Battery charger	yes
Inverter	yes
Shorepower	with cable

NAVIGATION

Compass	yes
Depth sounder	yes
Log	yes
VHF	yes



ABSOLUTE 47 HT

Autopilot	Raymarine ST70
GPS	Raymarine C120
Radar/GPS/plotter	yes
Navigation lights	yes
Searchlight	yes

EQUIPMENT

Fixed hardtop	With sliding roof
Cockpit cushions	yes
Cockpit table	yes
Bathing platform	yes
Boarding ladder	yes
Gangway	Hydraulic
Deck shower	yes
Anchor	yes
Anchor chain	yes
Horn	yes
Fenders	yes
Mooring lines	yes
TV	yes
Radio	Sony Marine RM-X60M
Cockpit speakers	yes



ABSOLUTE 47 HT



ABSOLUTE 47 HT



ABSOLUTE 47 HT



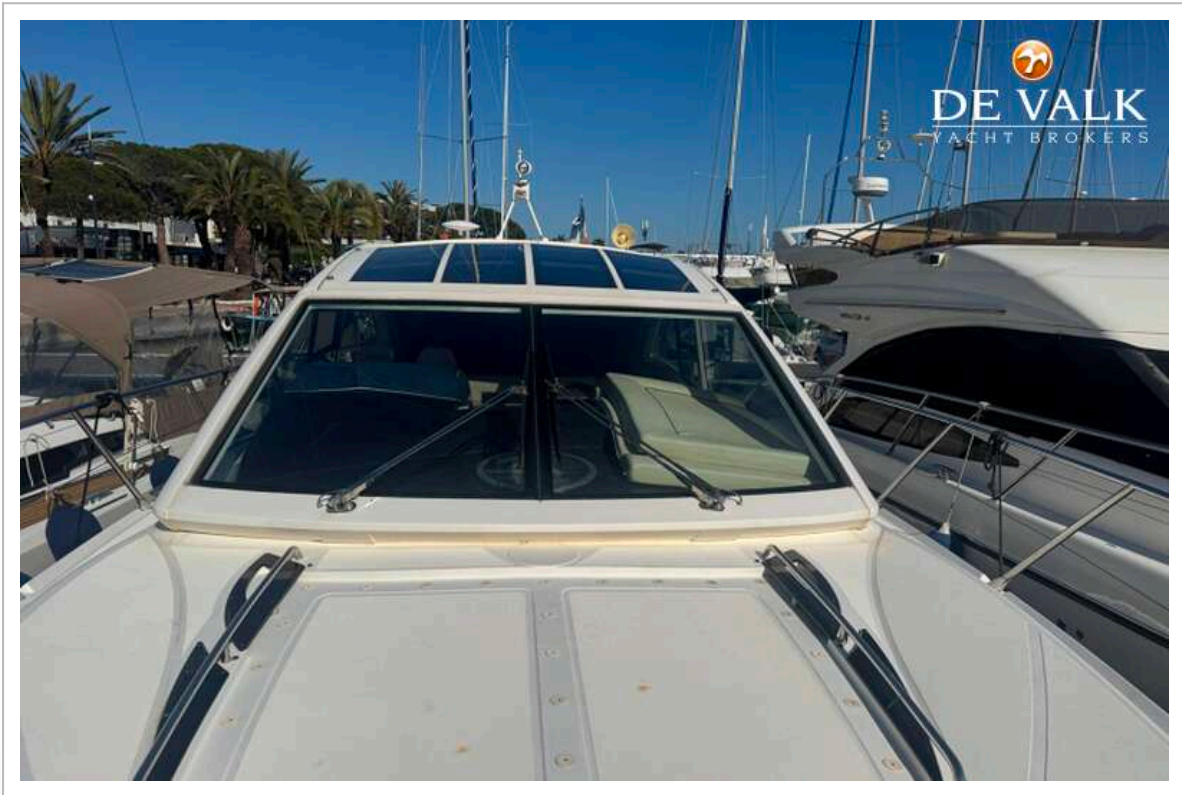
ABSOLUTE 47 HT



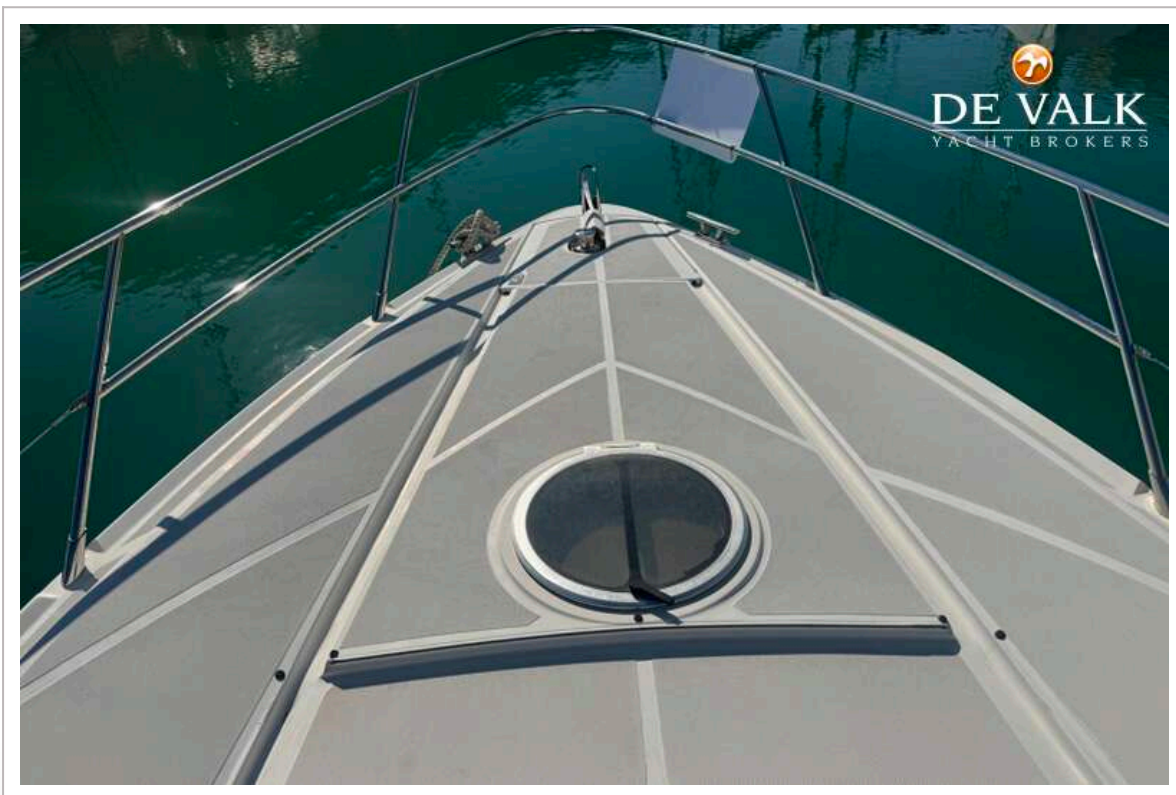
ABSOLUTE 47 HT



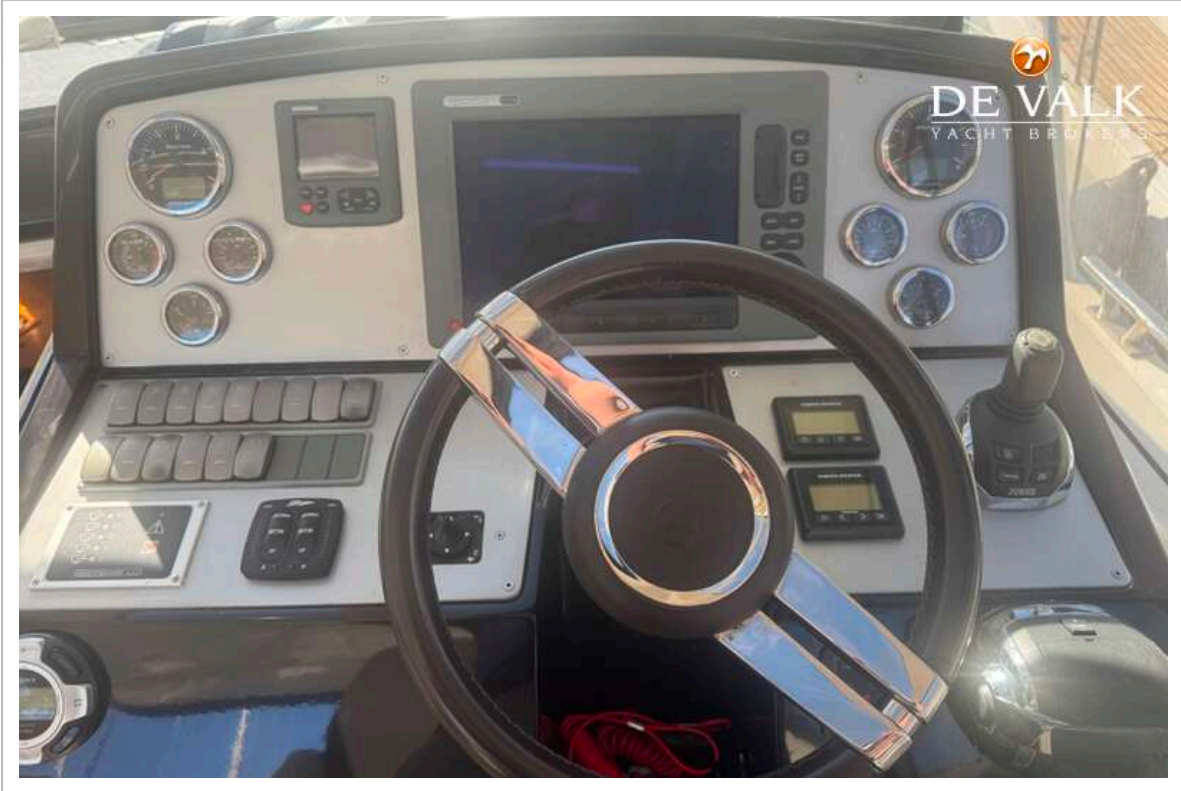
ABSOLUTE 47 HT



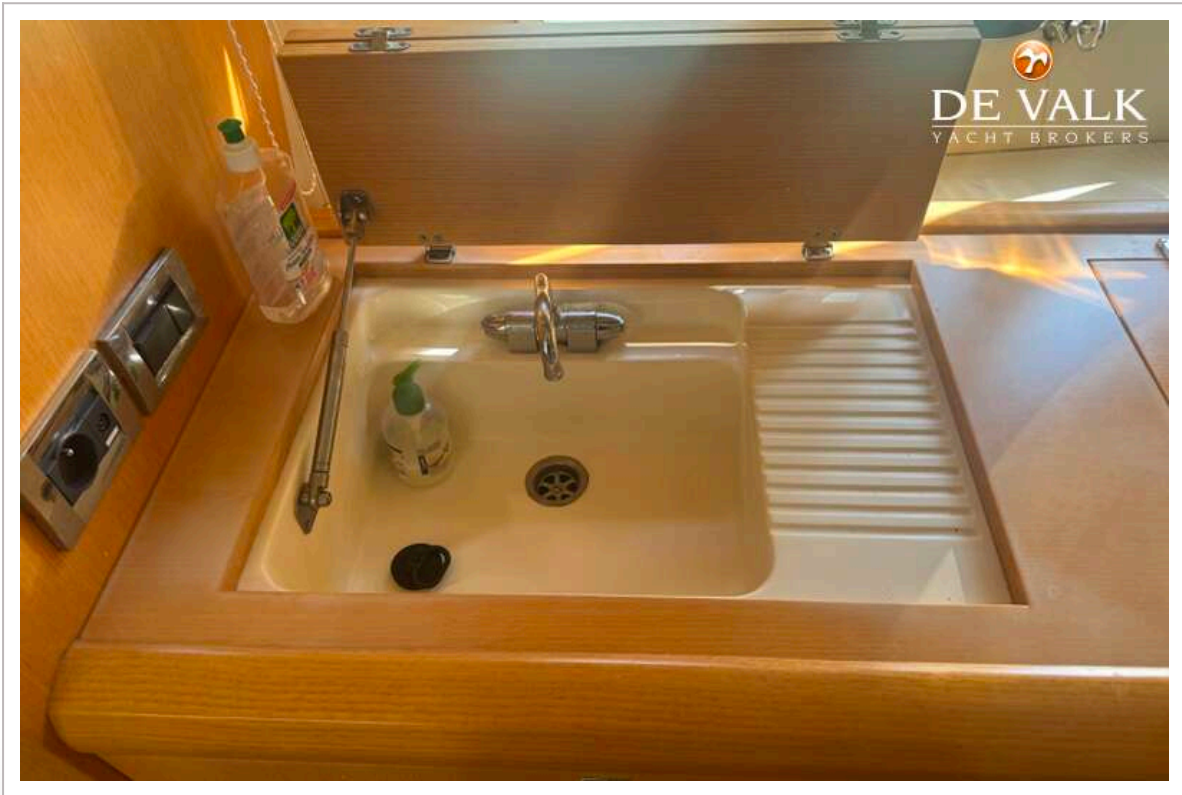
ABSOLUTE 47 HT



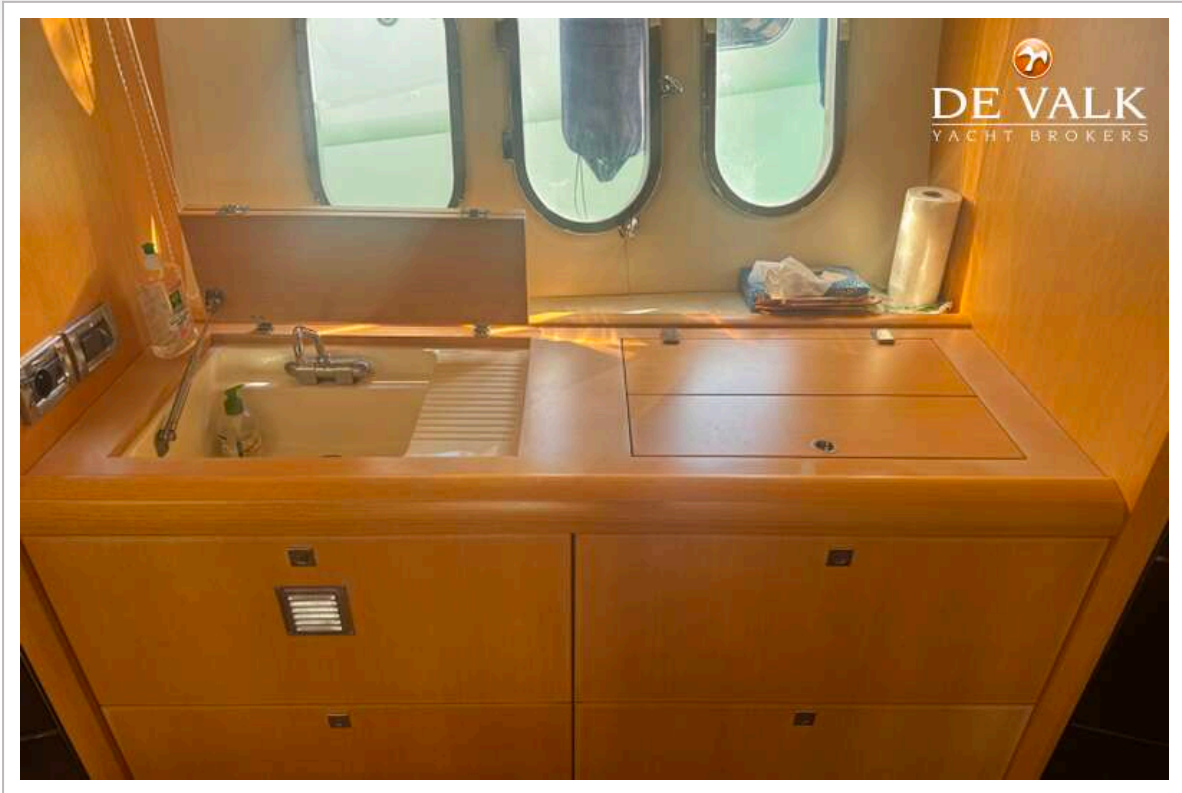
ABSOLUTE 47 HT



ABSOLUTE 47 HT



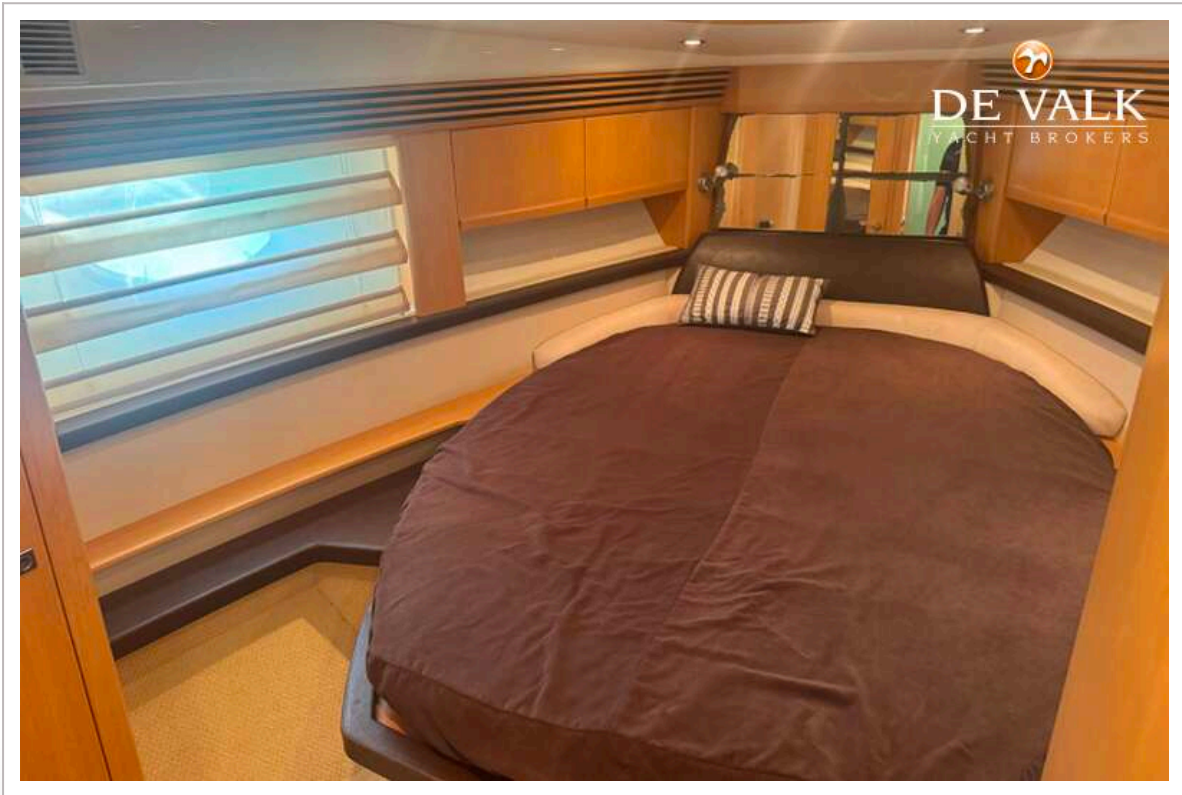
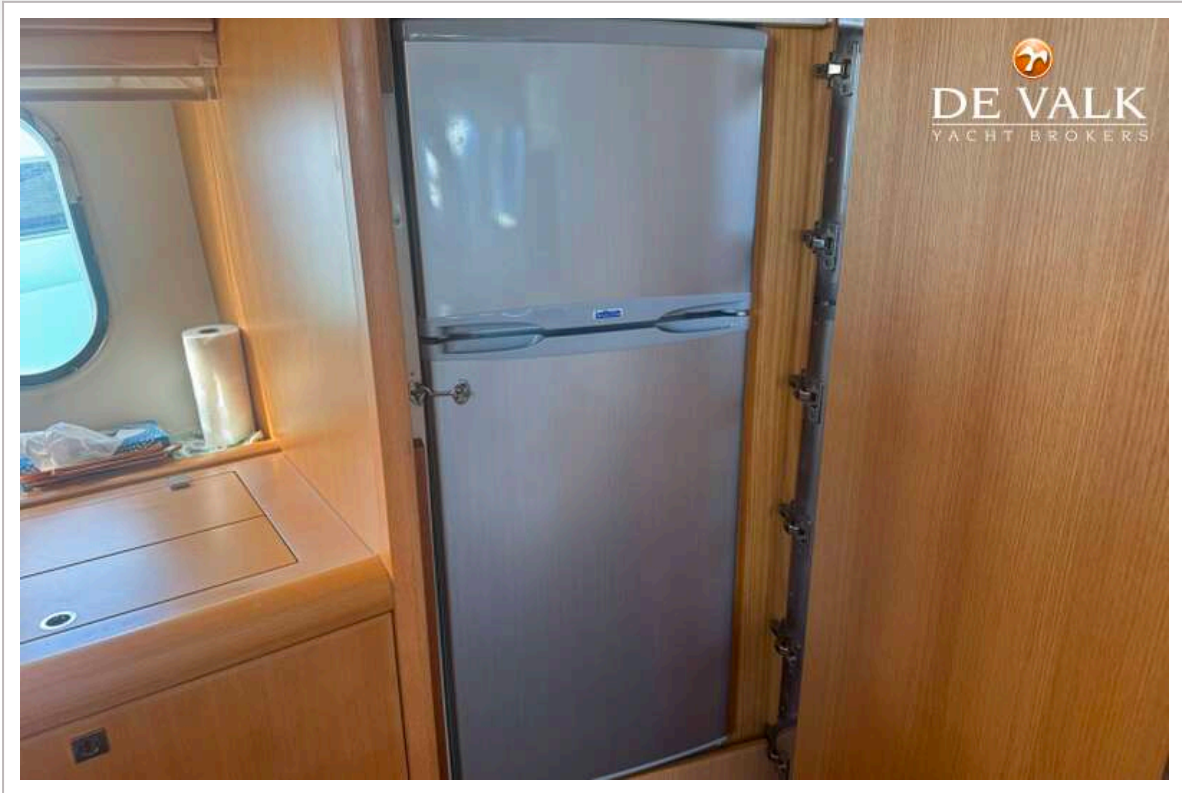
ABSOLUTE 47 HT



ABSOLUTE 47 HT



ABSOLUTE 47 HT



ABSOLUTE 47 HT



ABSOLUTE 47 HT

