



DE VALK
YACHT BROKERS



WHIS
YACHT

WHISPER 50



DE VALK
YACHT BROKERS

WHISPER 50

BROKER'S COMMENTS

Imagine gliding across a mirror-still bay, where the only sound is the gentle lap of water against the hulls. While traditional yachts announce their arrival with the drone of engines and the smell of exhaust, the Whisper 50 moves like a ghost in the breeze. Powered by the sun and engineered for silence, this solar-electric catamaran offers a transformative experience. Inside, the massive 6.6m beam creates a sun-drenched sanctuary of luxury, blending high-end craftsmanship with boundless ocean views. No vibration, no fumes-just pure, uninterrupted connection with the sea!

Reinier van der Wolf

SPECIFICATIONS

Dimensions	15.55 x 7.50 x 0.97 (m)	Builder	Whisper Yachts (FYD) Fano
Built	2026	Cabins	3
Material	GRP	Berths	6
Engine(s)	2 x Torqeedo motors elec	Hp/Kw	2 x 135.00 (hp), 99.36 (kw)
Asking price	on request (VAT Paid)	Lying	contact Monnickendam

CONTACT

Sales office	De Valk Monnickendam B.V.	Telephone	+31 (0)299 65 63 50
Address	Hoogedijk 6 1145 PM Katwoude NL	E-mail	monnickendam@devalk.nl

DISCLAIMER

These particulars are given in good faith as supplied but cannot be guaranteed.



WHISPER 50

GENERAL

Model	WHISPER 50
Type	catamaran motor yacht
LOA (m)	15,55
LWL (m)	14,07
Beam (m)	7,50
Draft (m)	0,97
Air draft (m)	5,95
Year built	2026
Builder	Whisper Yachts (FYD) Fano
Country	Italy
Designer	Berret-Racoupeau Yacht Design
Displacement (t)	22
CE norm	A
Hull material	GRP
Hull colour	White cream hull color hull - dark grey on the superstructure
Hull shape	Semi-displacement, high-efficiency catamaran platform
Superstructure material	GRP
Deck material	GRP
Deck finish	non-skid paint
Cockpit deck finish	cork
Antifouling (year)	2026
Window material	perspex Panoramic windows (14 mm.)
Deckhatch	deck hatches for cabins and bathrooms with mosquito and night screens, manually operated 1 large opening window on the aft cockpit lifting up from the sofa backrest (automatic) - DEVINT.
Portholes	The totality of the fixed portholes is of PLEXI-GLASS (12 mm.)
Flybridge	Fly bridge Layout and joinery: The cushions in high quality Fabric and Foam for outdoor and water resistant. The sun pads and the settees in fabric SUNBRELLA or equivalent and Bultex foam. Table for 8 persons in light veneer with fix height. One 65L fridge and a sink, installed on port side. One electric grill, One Icemaker Chairs to client's choice (not included in the price).



WHISPER 50

Fuel tank (litre)	GRP 400
Fuel tank 2 (litre)	GRP 400
Level indicator (fuel tank)	yes
Freshwater tank (litre)	GRP 685
Level indicator (freshwater)	yes
Blackwater tank (litre)	GRP 2 x 80
Level indicator (blackwater)	yes
Blackwater tank extraction	yes
Greywater tank (litre)	GRP 2 x 130
Level indicator (greywater)	yes
Wheel steering	hydraulic with two rudders
Inside helm position	yes
Flybridge helm position	yes
Emergency tiller	yes
More info on hull	Construction : Polyester and vinylester resin Fiberglass with carbon reinforcement
Extra info	Decks & Flooring: optional upgrades: • All outdoor walking areas can be finished in synthetic teak (FLEXITEEK or equivalent). • Real teak is also available as an alternative premium option. • Color of the stripes and teak tone to be selected by the owner.
Extra info	Miscellaneous deck accessories 1 stainless steel deck fillers D 50mm to fill diesel tank 2 stainless steel deck fillers D 50 mm to fill water tank 2 deck fillers for removal grey and black water from tanks 2 shore power connections

ACCOMMODATION

Cabins	3
Berths	6
Saloon	yes
Air-conditioning	reverse cycle airco Webasto or equivalent (50.000 BTU) - each cabin and main salon
Sliding door to cockpit	2 custom sliding doors to manually close the aft cockpit - DEVINT



WHISPER 50

Galley	yes
Countertop	corian
Sink	stainless steel double
Cooker	induction SMEG - 4 burners
Oven	SMEG
Microwave	SMEG
Fridge	Double drawer fridge/freezer SMEG
Hot water system	220V
Water pressure system	yes
Dishwasher	SMEG
Owners cabin	Master
Wardrobe	walk-in closet
Bathroom	en suite
Toilet	en suite
Toilet system	electric
Wash basin	in the bathroom Double
Shower	yes
Guest cabin 1	Vip
Wardrobe	walk-in closet
Toilet	en suite
Toilet system	electric
Guest cabin 2	twin single
Toilet	en suite
Toilet system	electric
Wash basin	yes
Shower	yes
Crew cabin(s)	yes
Toilet (crew)	yes
Washing machine	Washer-dryer (SMEG)
Dryer	Washer-dryer (SMEG)
Extra info	air conditioning: As an option, a centralized 77,000BTU tropical system is possible.



MACHINERY

No of engines	2
Make	Torqueedo motors
HP	135
kW	99.36
Fuel	electric
Engine cooling system	seawater
Drive	shaft
Bowthruster	electric MAX POWER CT 125 (installed on starboard hull as an option)
Propeller type	yes
Propeller blades	yes
Propeller shaft material	stainless steel
Manual bilge pump	Osculati or equivalent.
Electric bilge pump	3 automatic pumps per hull (100l/min) + 2 emergency bilge pumps
Electrical installation	230/ AC 50Hz, and a 24V DC
Generator	2 x 35 kW – HVO - KOHLER 35kW at 50Hz
Batteries	3 x 80 kWh (Solar Electric version), plus service batteries
Generator battery	1 x AGM 12v/115Ah
Battery monitor	Battery management system
Battery charger	4 HV AC Battery Charger 3,3 kW/220V, 1.5 kW/110V
Inverter	High Voltage DC-AC Inverter 6 kW
Solar panel	Approx 7.300 Wp of semi-flexible solar panels SOLBIAN Approx 42m ² Solar panels
Shorepower	with cable 32amp 15 m. cable
Watermaker	production capacity of 100l/h. Reverse osmosis water maker – Schenker or equivalent. 2 pressurized hydrophore pression pumps with buffer 20L tanks
Extra info	Cam 300 IP CCTV in engine room



Extra info

Whisper 50: The Future of Responsible Yachting The Whisper 50 is more than a vessel; it is a manifesto for the next generation of seafaring. Engineered around three distinct propulsion philosophies, it allows owners to harmonize their passion for exploration with a deep respect for the marine environment. By integrating intelligent energy harvesting with advanced hydrodynamic efficiency, the Whisper 50 ensures that your presence on the water leaves nothing behind but a wake.

01. Solar Eco-Efficiency The Sustainable Transition: This configuration is designed for the pragmatic explorer. By pairing HVO-compatible engines (Hydrotreated Vegetable Oil) with a high-output solar array, we significantly lower the carbon footprint of traditional cruising. It is a refined approach that maximizes fuel autonomy while minimizing environmental impact through intelligent onboard energy management.

02. Solar Hybrid Harmonized Autonomy: The Hybrid configuration offers the ultimate duality: the serenity of electric propulsion and the security of extended range. Navigate coastal waters in near-total silence using solar-stored energy, with highly efficient generators available only when needed. It is the perfect balance for those who demand long-range independence without sacrificing ecological integrity.

03. Solar Electric The Pinnacle of Zero-Emission Luxury: A masterclass in silent yachting. This fully electric configuration relies exclusively on high-capacity battery architecture and integrated solar skin technology. By eliminating direct emissions and engine vibration, the Solar Electric version offers a pure sensory connection to the sea, redefining luxury as a state of total environmental synergy.

NAVIGATION

Multi control display

Raymarine I70s

Depth sounder

CP 100

VHF

Raymarine 63 VHF with Raymic control station and antenna

VHF handheld

1 ICOM 602 radio with HM136W

Autopilot

Raymarine Evolution with P70 Rotary display

Radar

24nm, X band, Including a closed Aerial 21' Raymarine, Quantum Q24 D

Plotter

Raymarine 12" Axiom Pro S with CPT-S Transducer



Camera mounted on the Flybridge for mooring | Raymarine CAM220

EQUIPMENT

Bathing platform the transom platform will host the tender. It will be a lifting up and down linear system. Hydraulic operated – Besenconi or equivalent. Maximum potential load capacity: 500 Kg / 1100 lbs

Gangway One manual gangway fixed on 2 inserts on portside and starboard of the transom Optional automatic gangway with foldable steps - Besenconi SP608 or equivalent.

Anchor 25 kg

Anchor chain 60 m. (Ø12 mm)

Chain counter yes

Windlass electrical | 1200W | with remote

Deck wash a deck hot/cold shower will be integrated in starboard bathing platform in sterns 2 pressurized freshwater outlets on the deck fore/aft

Sea railing stainless steel

Life raft container | 2 x Vinking

Life raft (pers) 6

Fenders 8 inflatable (300 x 1250m.)

TV receiver Satellite TV Tracvision (Option)

Satellite Starlink

Surround Sound System Global control system with SONOS Bluetooth/WIFI application. Possibility of global pairing and separate listening on each zone (Saloon, Aft Cockpit, Flybridge, Owner's Cabin, Guest Cabin) | Sonos

Extra info 2 underwater lights with Led technology located under each transom (total 4) as option

Extra info Cockpit Layout and joinery: The sun pads and the settees will be done in high quality Fabric and Foam for outdoor and water resistant SUNBRELLA and Bultex foam. Table in light veneer fix height. Deck showers (hot & cold water) integrated in the transom. Stainless steel folding swimming ladder integrated fitted on starboard transom steps. Chairs and stools to client's choice (not included in the price).





WHISPER 50



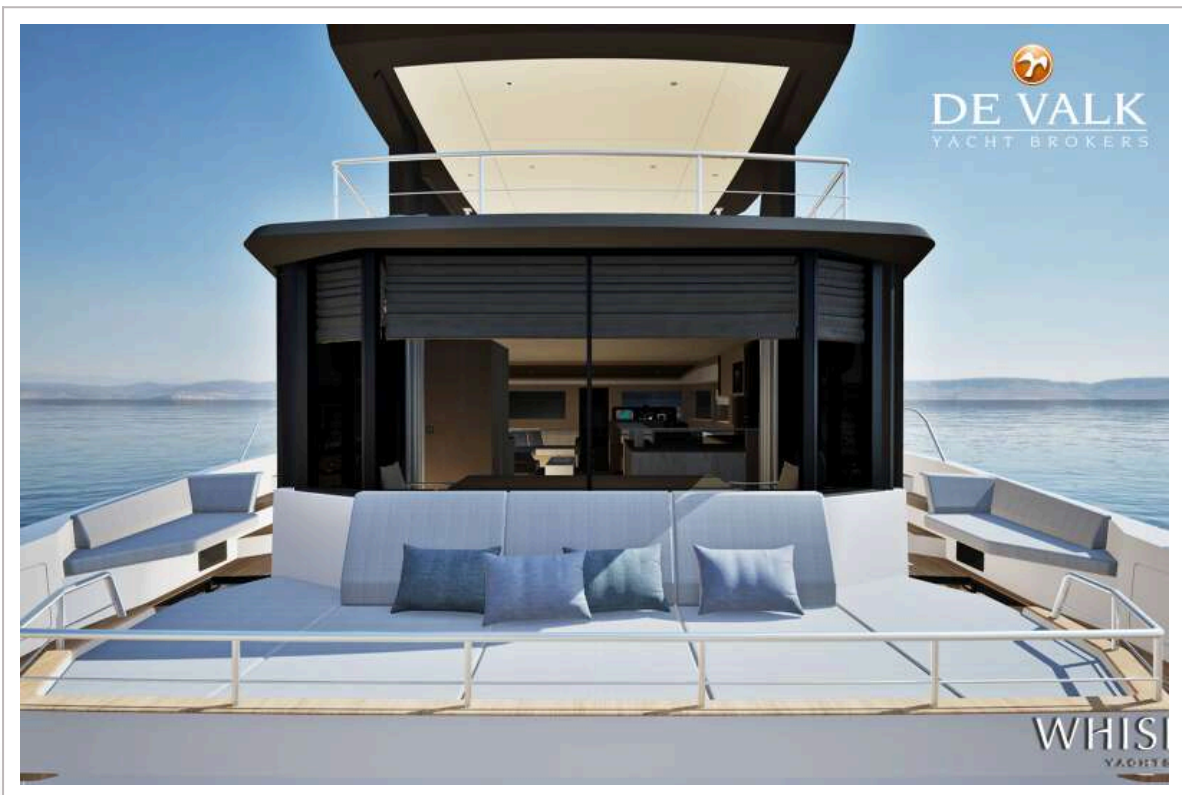
WHISPER 50



WHISPER 50



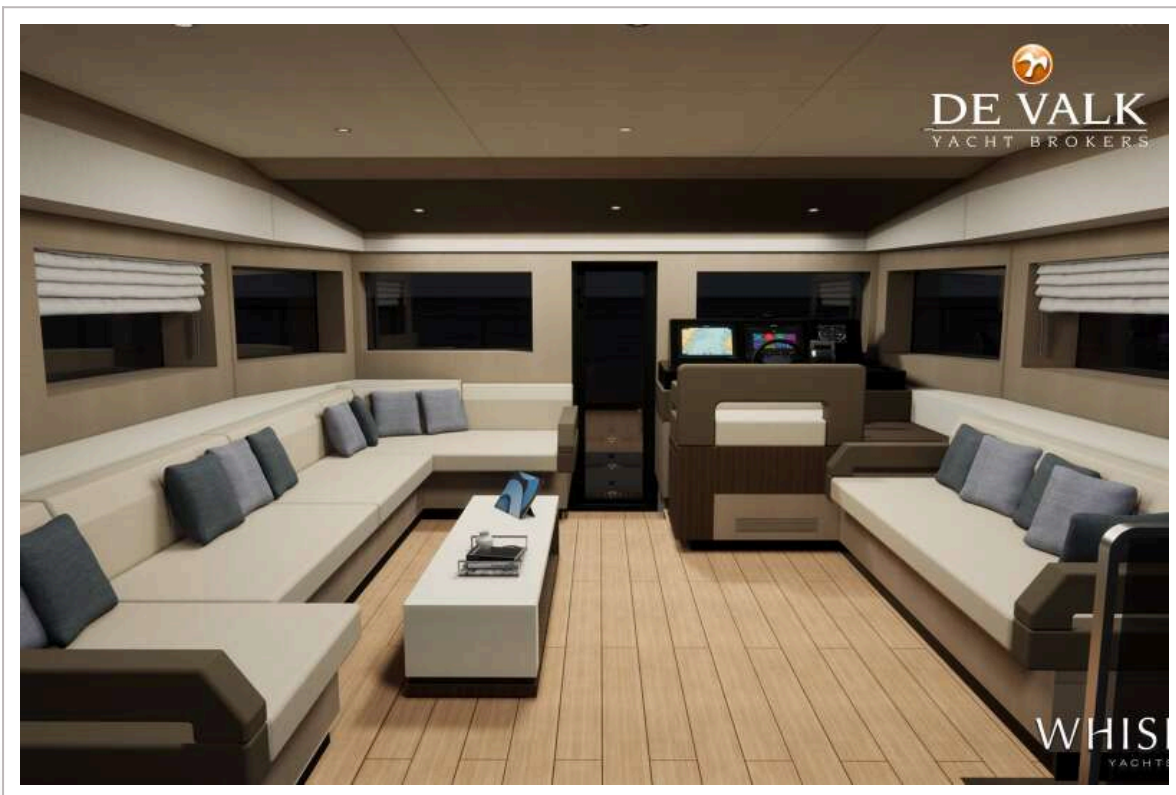
WHISPER 50



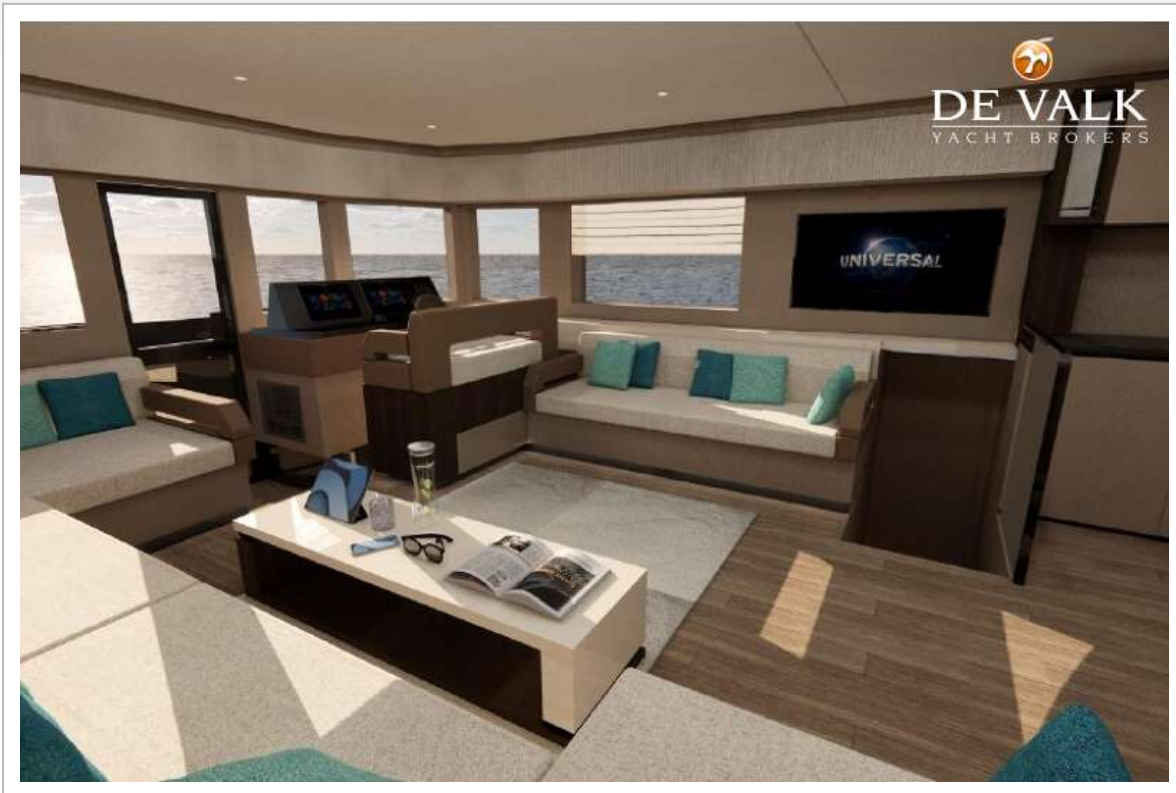
WHISPER 50



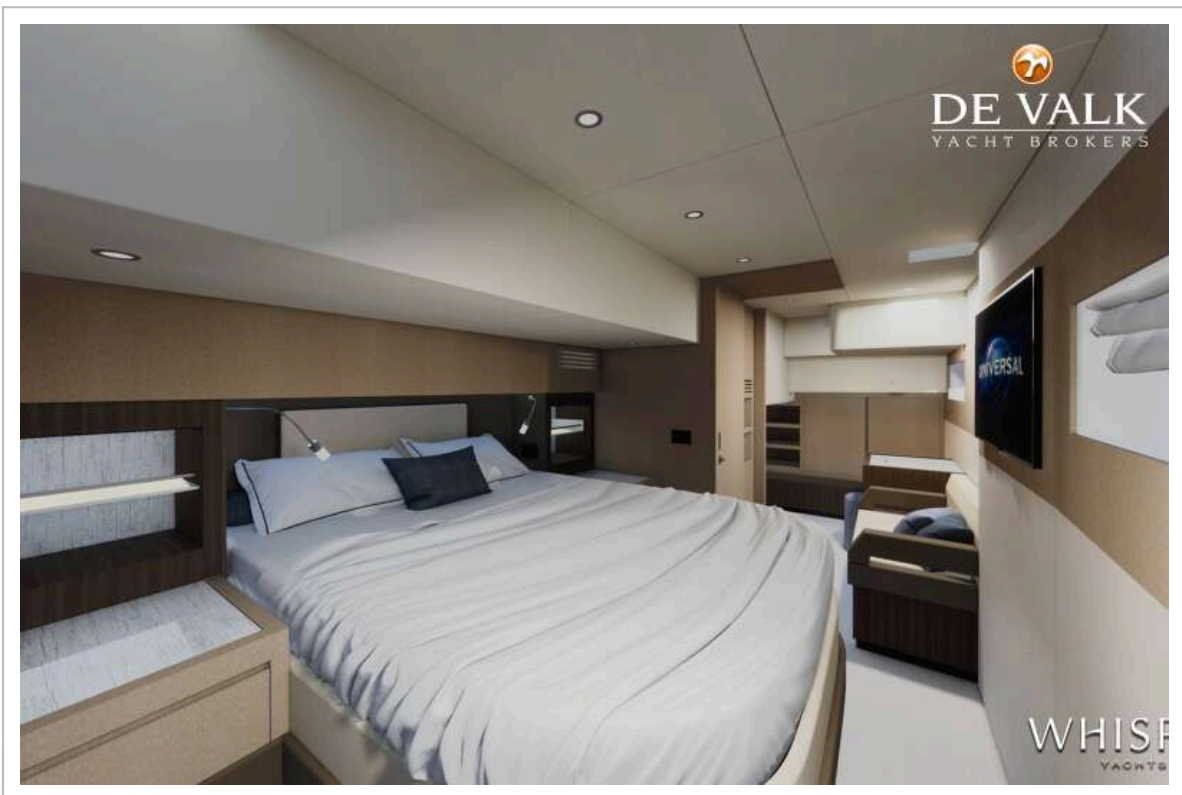
WHISPER 50



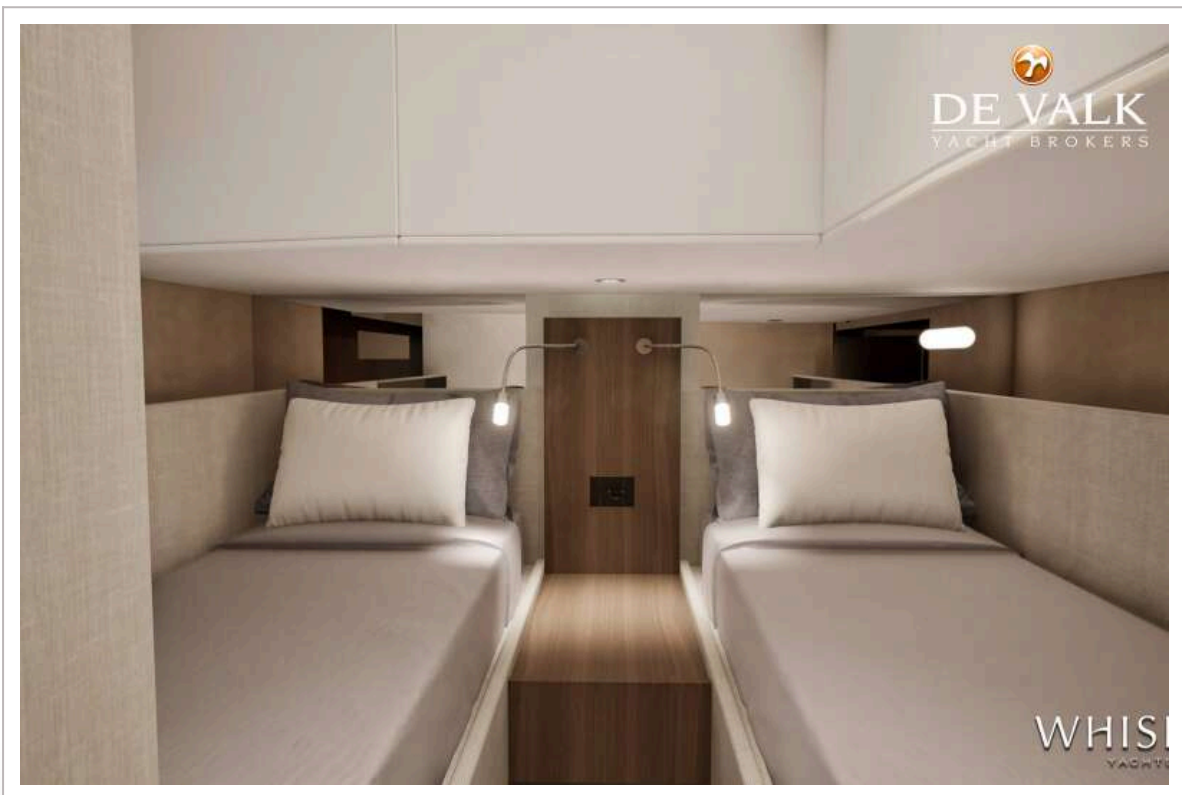
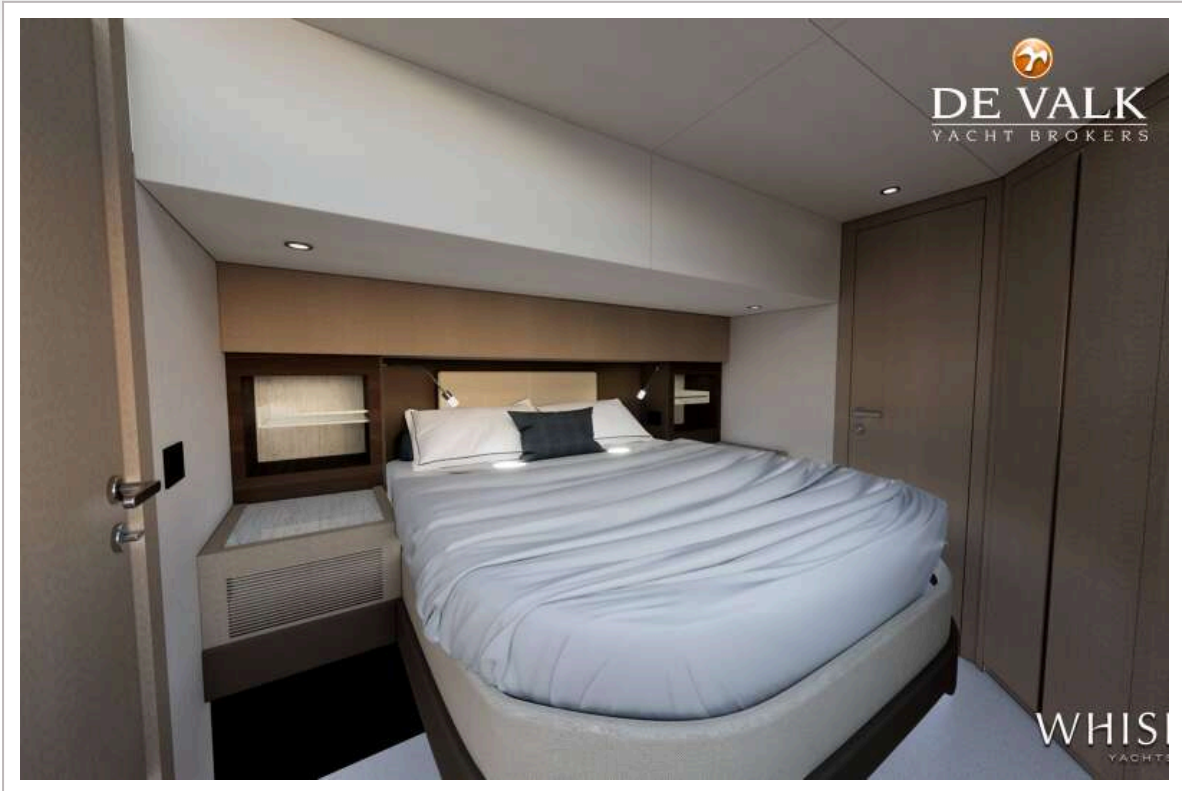
WHISPER 50



WHISPER 50



WHISPER 50



WHISPER 50

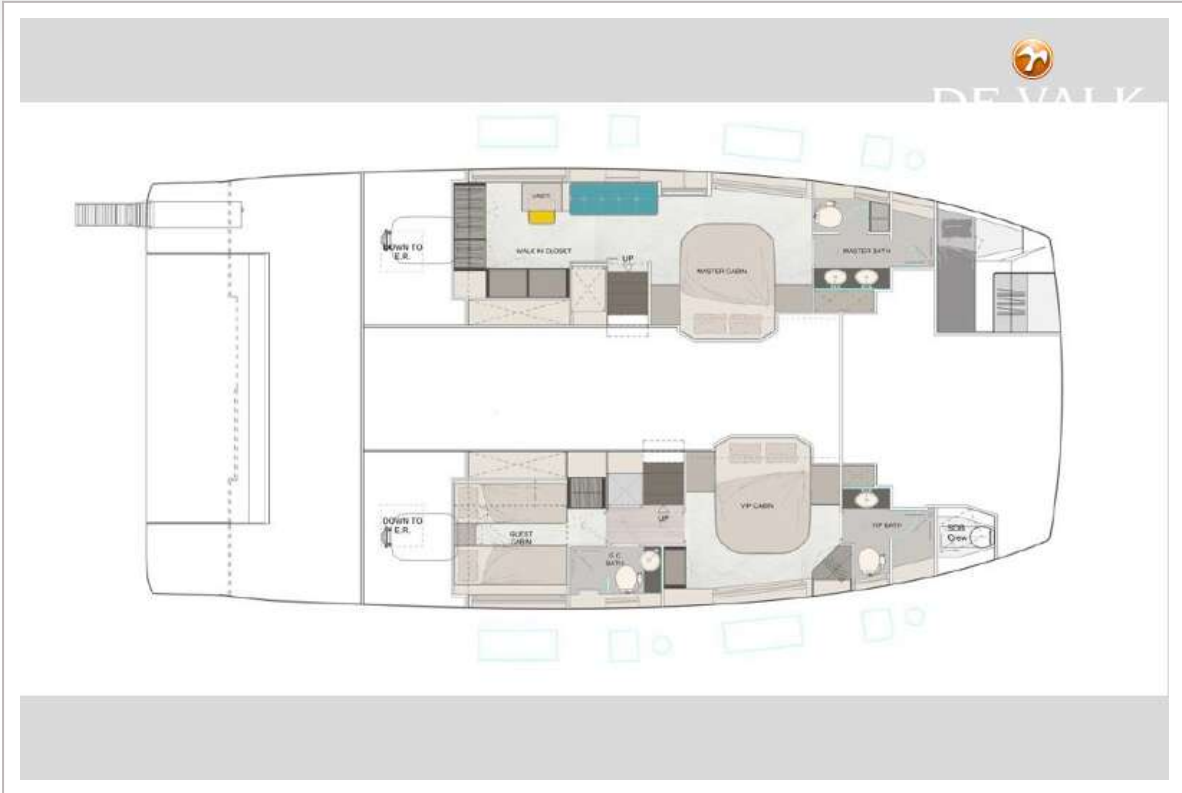
ULTRALEATHER Desert Dune 601-3386 [LE1]
RUBELLI Fabohirty Avorio 30319-02 [FA1]
RUBELLI Fabohirty Teal Blu 30319-23 [FA3]
RUBELLI Fabohirty Tiffany 30319-21 [FA4]
SPRADLING Linetex Bamboo LNT-3460 [FA2]
Carpet Supertuft Moon 173 Ivory [CA1]



3 CABINS VERSION



WHISPER 50



WHISPER 50

