



DE VALK  
YACHT BROKERS



JETTEN BULLY 960 OK



DE VALK  
YACHT BROKERS

# JETTEN BULLY 960 OK

## BROKER'S COMMENTS

The Jetten Bully 960 OK is a solidly built and practical motor yacht with comfortable handling characteristics. Thanks to its compact dimensions and smart layout, the vessel is ideal for day trips and longer stays, and easy to handle. The interior is warm and efficiently designed, offering a comfortable living space and sleeping accommodation for 4 people. The heating also makes the yacht suitable for use in the early and late season. The reliable Yanmar diesel engine, combined with a bow thruster, ensures easy manoeuvring. A comfortable and user-friendly yacht with solid performance.

*Hielke Peters*

## SPECIFICATIONS

<b>Dimensions</b>	10.10 x 3.45 x 0.90 (m)	<b>Builder</b>	Jetten Jachtbouw b.v.
<b>Built</b>	2005	<b>Cabins</b>	1
<b>Material</b>	Steel	<b>Berths</b>	4
<b>Engine(s)</b>	1 x Yanmar 4JH4E diesel	<b>Hp/Kw</b>	55.00 (hp), 40.48 (kw)
<b>Asking price</b>	€ 129.500 (VAT Paid)	<b>Lying</b>	The Netherlands

## CONTACT

<b>Sales office</b>	De Valk Loosdrecht B.V.	<b>Telephone</b>	+31 (0)35 582 90 30
<b>Address</b>	't Breukeleveense Meentje 6 1231LM Loosdrecht / Wijdmeren NL	<b>E-mail</b>	loosdrecht@devalk.nl

## DISCLAIMER

These particulars are given in good faith as supplied but cannot be guaranteed.



## GENERAL

Model	JETTEN BULLY 960 OK
Type	motor yacht
LOA (m)	10,10
LWL (m)	9,00
Beam (m)	3,45
Draft (m)	0,90
Air draft (m)	2,40
Headroom (m)	1,95
Year built	2005
Builder	Jetten Jachtbouw b.v.
Country	The Netherlands
Designer	Martin Bekebrede
Displacement (t)	7
CE norm	C
Hull material	steel
Hull colour	blue
Hull thickness (mm)	5
Hull shape	hard chine
Keel type	long keel
Superstructure material	steel
Superstructure (mm)	4
Deck plate thickness (mm)	4
Rubbing strake	fender rope
Deck material	steel
Deck finish	non-skid paint
Superstructure deck finish	paint
Cockpit deck finish	non-skid paint
Antifouling (year)	yes
Dorades	Stainless steel
Window frame	aluminium



Window material	tempered glass
Deckhatch	yes
Portholes	aluminium 2x each side
Insulation	rockwool
Mast can be lowered	manual
Fuel tank (litre)	300
Level indicator (fuel tank)	Wema
Freshwater tank (litre)	300
Level indicator (freshwater)	Wema
Blackwater tank (litre)	150
Level indicator (blackwater)	VDO
Wheel steering	hydraulic
Inside helm position	yes
Outside helm position	hydraulic

## ACCOMMODATION

Cabins	1
Berths	4
Open cockpit	yes
Headroom saloon (m)	1,95
Heating	diesel ducted hot air Eberspacher
Dinette to convert into berth	yes
Opening door to cockpit	yes
Galley	yes
Countertop	plastic
Sink	stainless steel
Cooker	calor gas 3 Pits
Fridge	Isotherm with freezer compartment
Hot water system	220V + engine Exalto 40L boiler
Water pressure system	electrical
Owners cabin	v-bed



<b>Bed length (m)</b>	2,00
<b>Wardrobe</b>	hanging and shelves
<b>Bathroom</b>	shared
<b>Toilet</b>	shared
<b>Toilet system</b>	manual
<b>Wash basin</b>	in the bathroom
<b>Shower</b>	shared

## MACHINERY

<b>No of engines</b>	1
<b>Make</b>	Yanmar
<b>Type</b>	4JH4E
<b>HP</b>	55
<b>kW</b>	40.48
<b>Fuel</b>	diesel
<b>Year installed</b>	2005
<b>Consumption (l/hr)</b>	5
<b>Engine hours</b>	780
<b>Engine cooling system</b>	freshwater heat exchanger
<b>Drive</b>	shaft
<b>Shaft seal</b>	yes
<b>Engine controls</b>	bowden cable
<b>Gearbox</b>	hydraulic Yanmar
<b>Bowthruster</b>	electric
<b>Exhaust</b>	watercooled
<b>Propeller type</b>	fixed
<b>Propeller shaft material</b>	stainless steel
<b>Shaft lubrication</b>	water
<b>Electric bilge pump</b>	yes
<b>Electrical installation</b>	12V / 230V
<b>Start battery</b>	1x Sportline RV 12V 120Ah (2026)



# JETTEN BULLY 960 OK

<b>Service battery</b>	2x Correct Marine 12V 120Ah (2026)
<b>Battery monitor</b>	Victron
<b>Battery charger</b>	yes
<b>Inverter</b>	Skytronic 300W
<b>Shorepower</b>	with cable

## NAVIGATION

<b>Electric compass</b>	Raymarine ST40
<b>Depth sounder/log</b>	Raymarine ST40
<b>VHF</b>	Shipmate RS8300
<b>Rudder angle indicator</b>	VDO
<b>Navigation lights</b>	yes

## EQUIPMENT

<b>Fixed hardtop</b>	yes
<b>Cockpit cover</b>	yes
<b>Cockpit cushions</b>	yes
<b>Bathing platform</b>	yes
<b>Boarding ladder</b>	stainless steel
<b>Transom door</b>	yes
<b>Windlass</b>	manual
<b>Sea railing</b>	stainless steel
<b>Grab rail (superstructure)</b>	stainless steel
<b>Wiper</b>	yes
<b>Horn</b>	electric
<b>Radio</b>	VDO
<b>Cockpit speakers</b>	yes



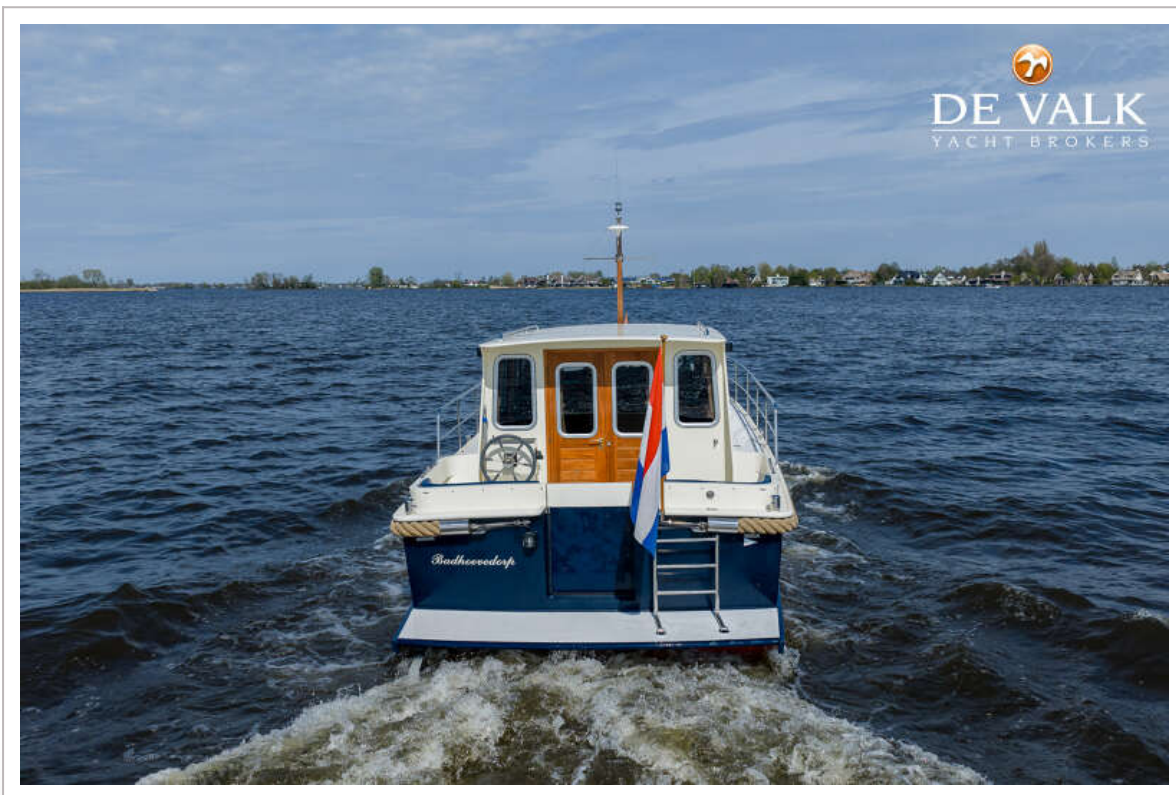
# JETTEN BULLY 960 OK



# JETTEN BULLY 960 OK



# JETTEN BULLY 960 OK



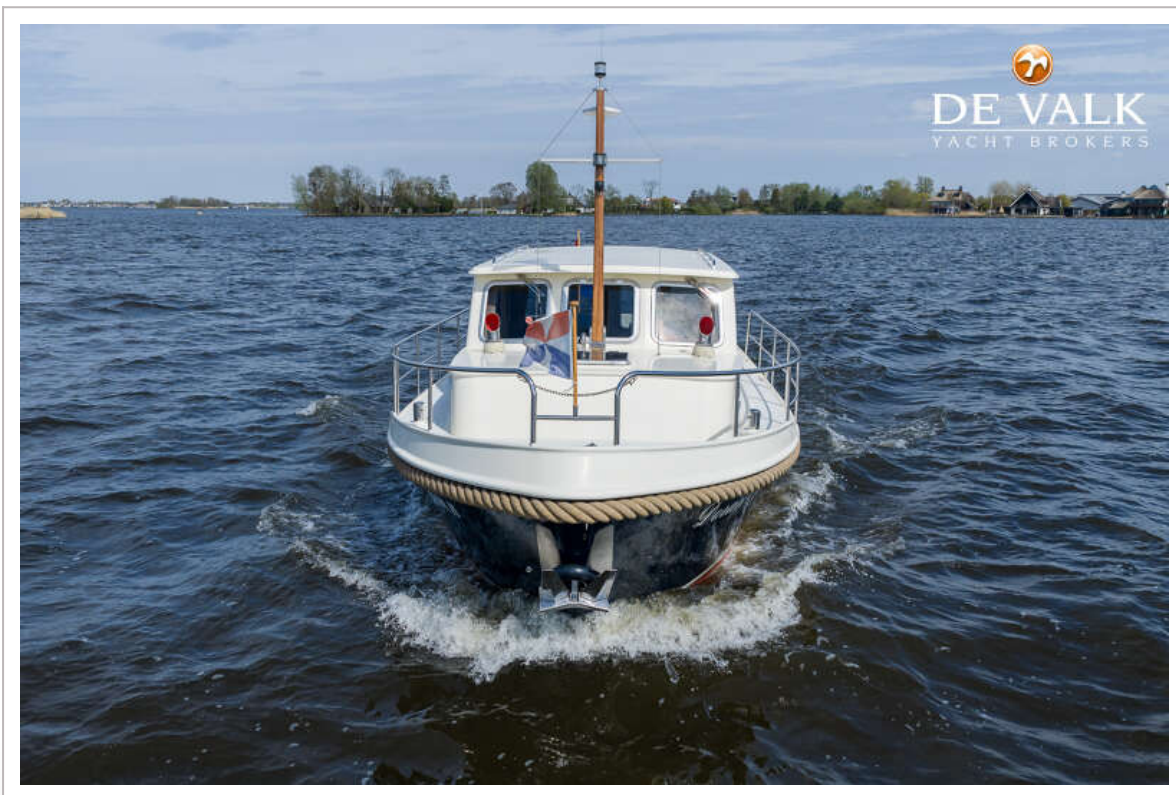
# JETTEN BULLY 960 OK



# JETTEN BULLY 960 OK



# JETTEN BULLY 960 OK



# JETTEN BULLY 960 OK



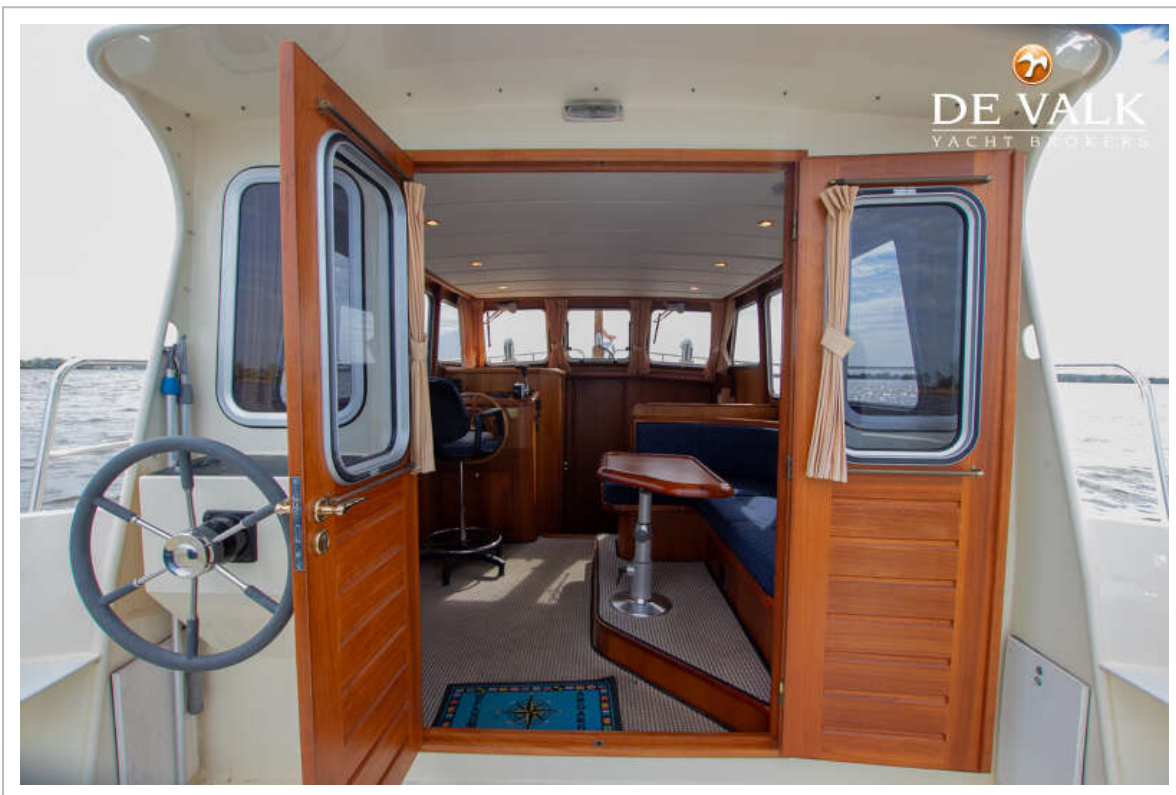
# JETTEN BULLY 960 OK



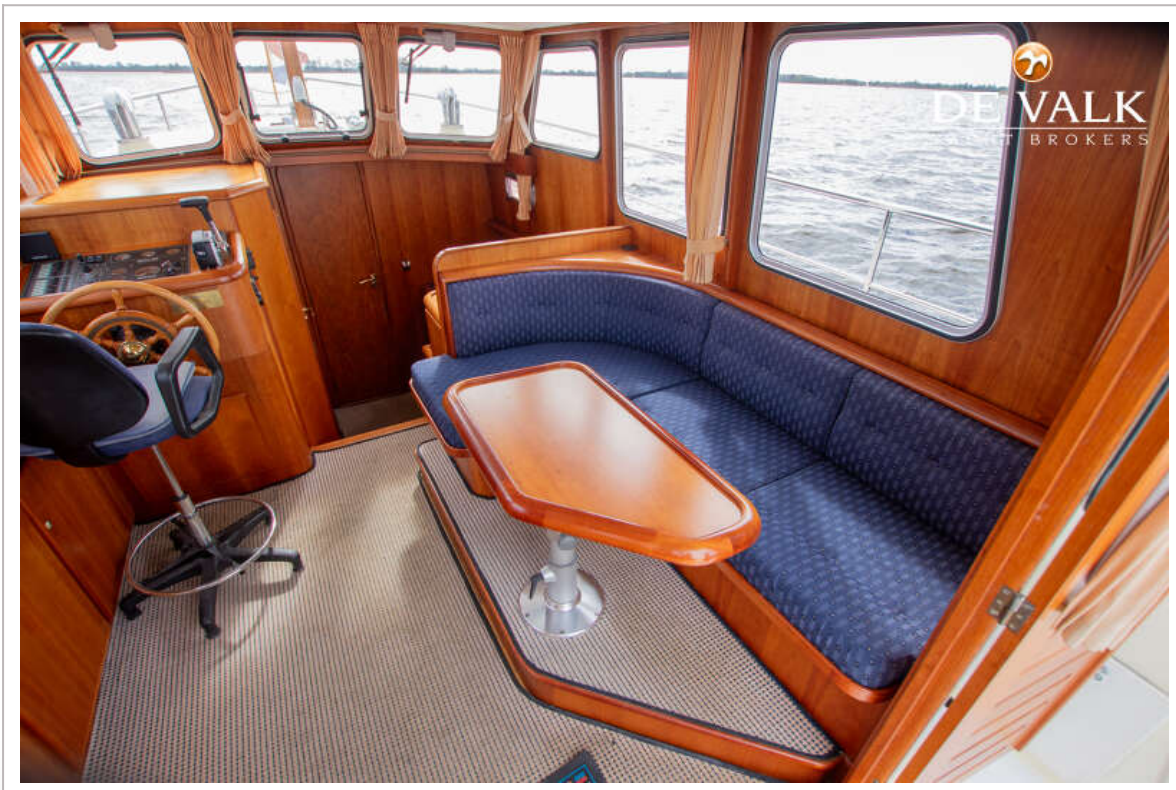
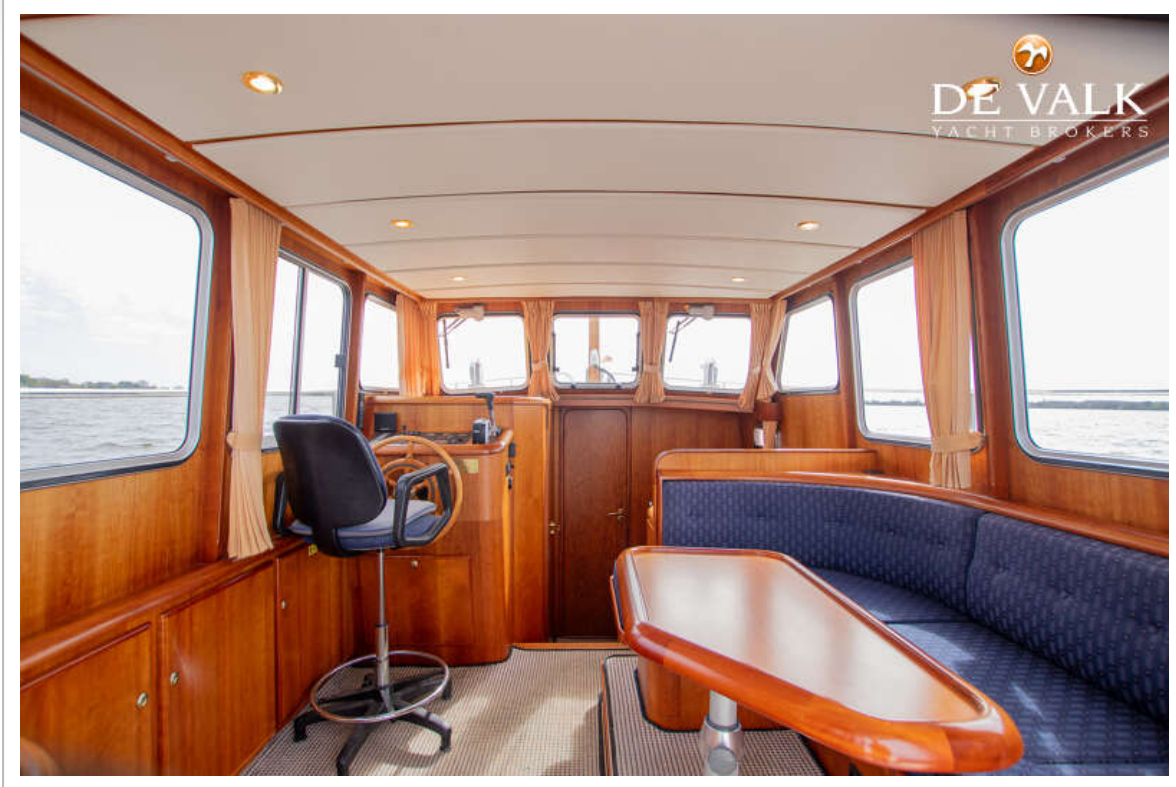
# JETTEN BULLY 960 OK



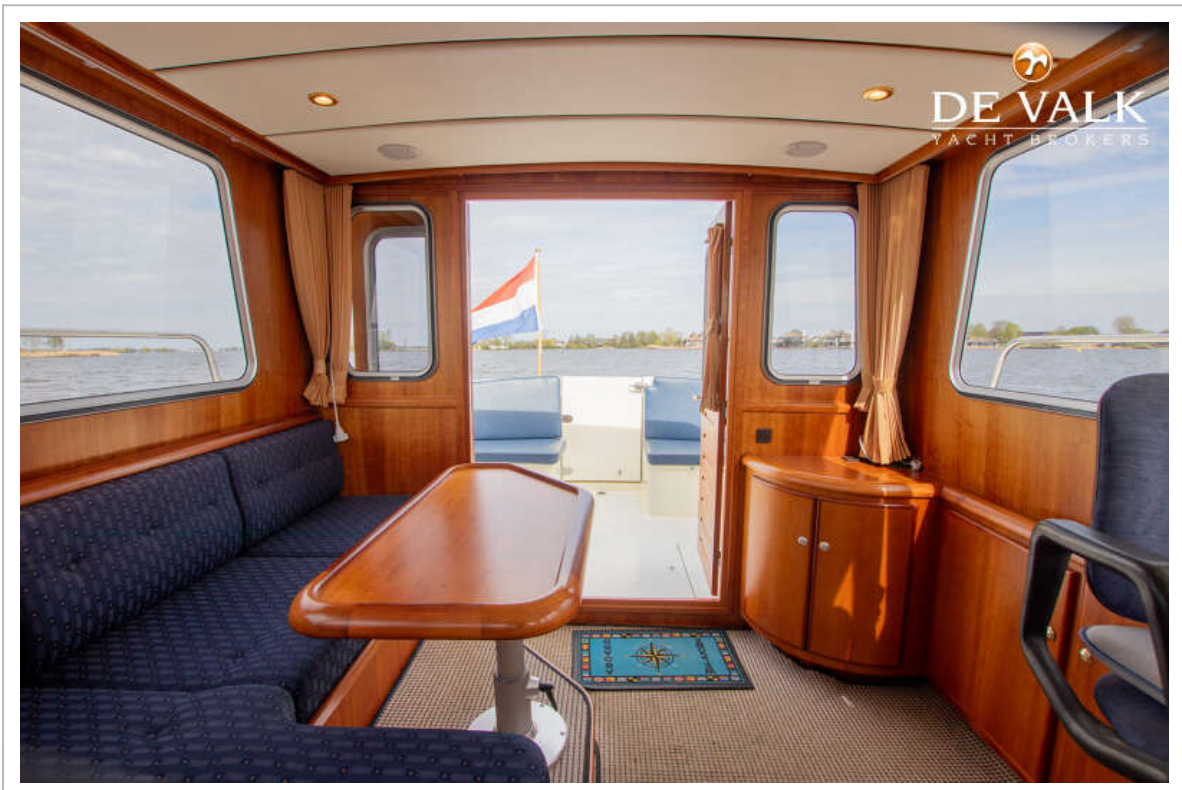
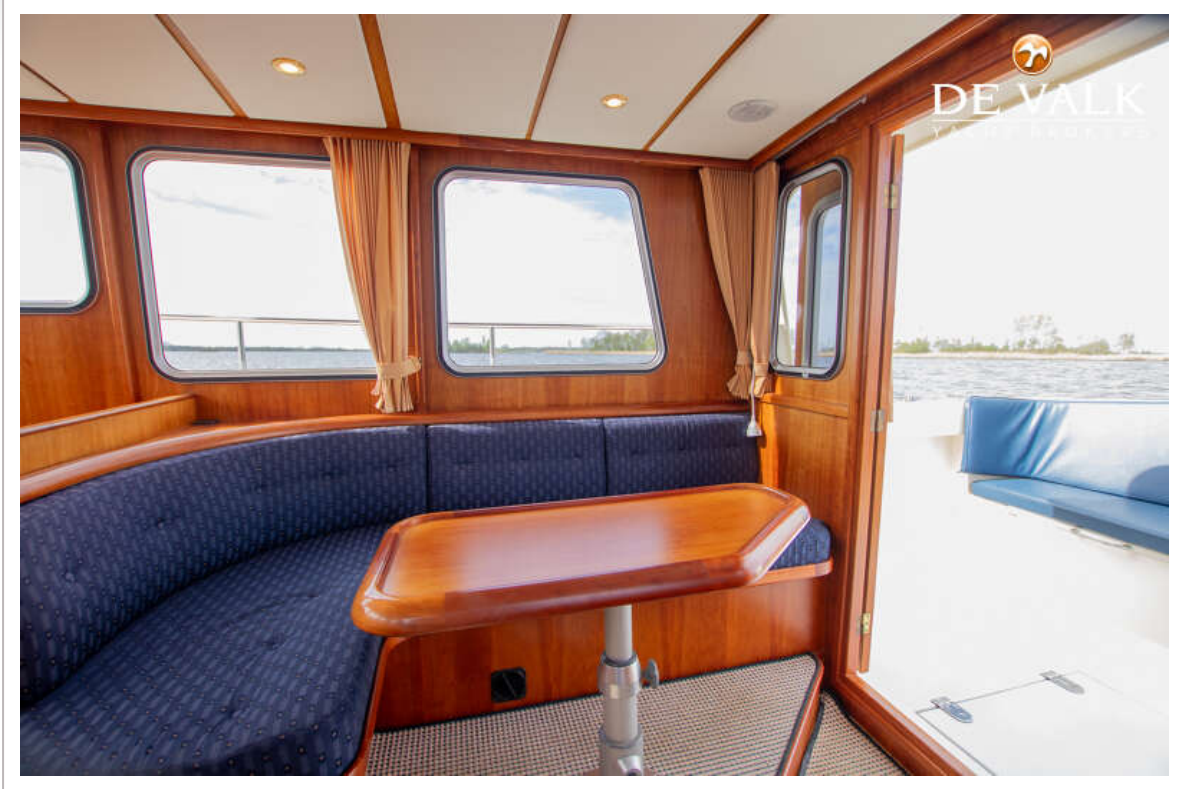
# JETTEN BULLY 960 OK



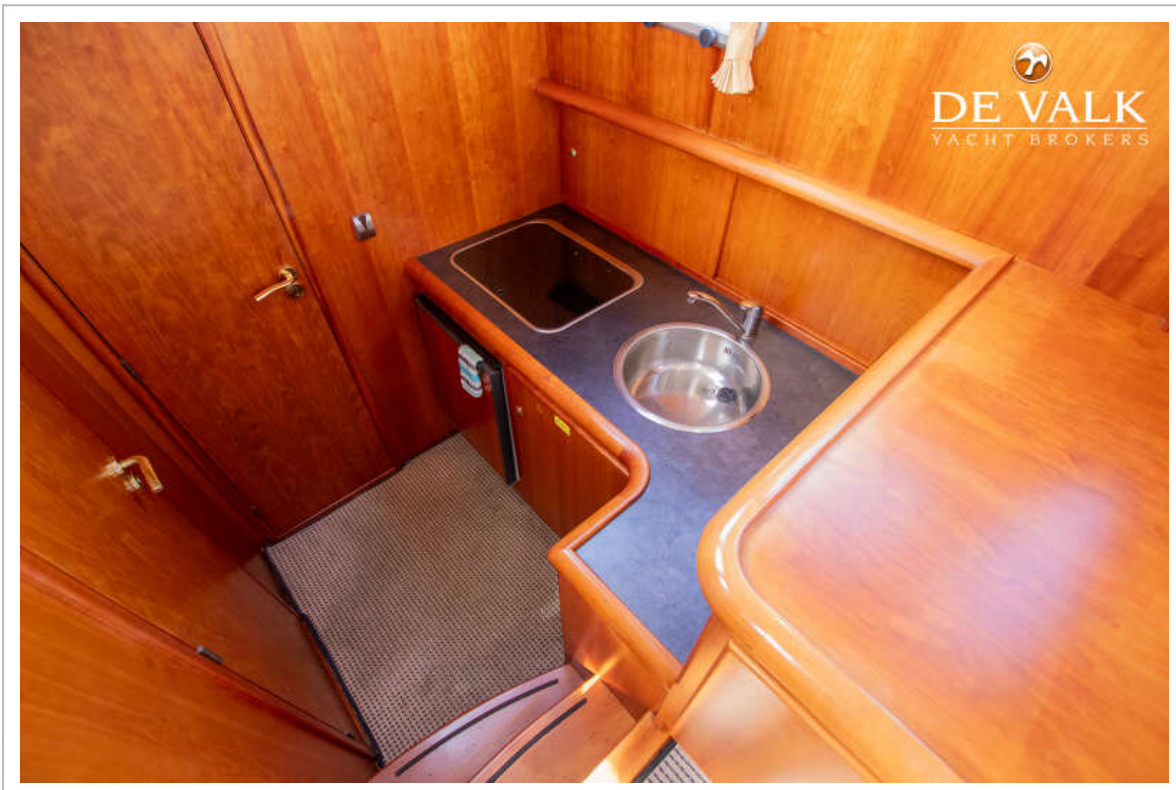
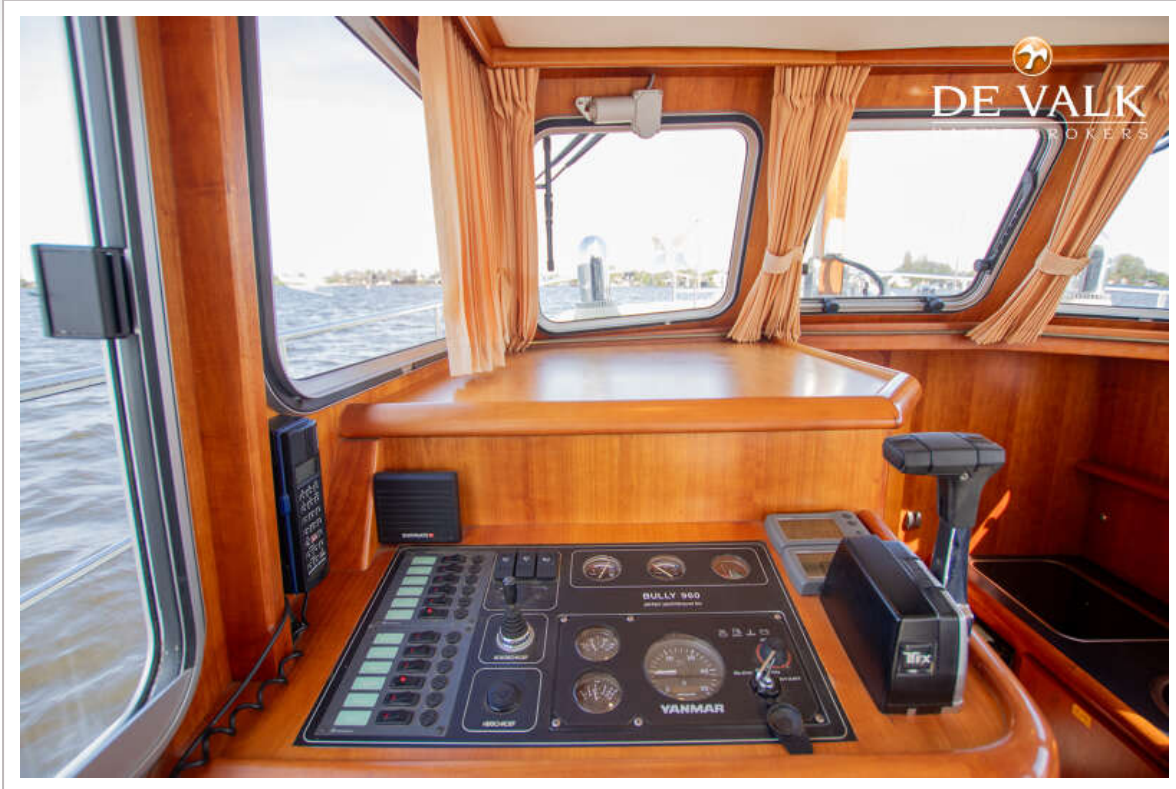
# JETTEN BULLY 960 OK



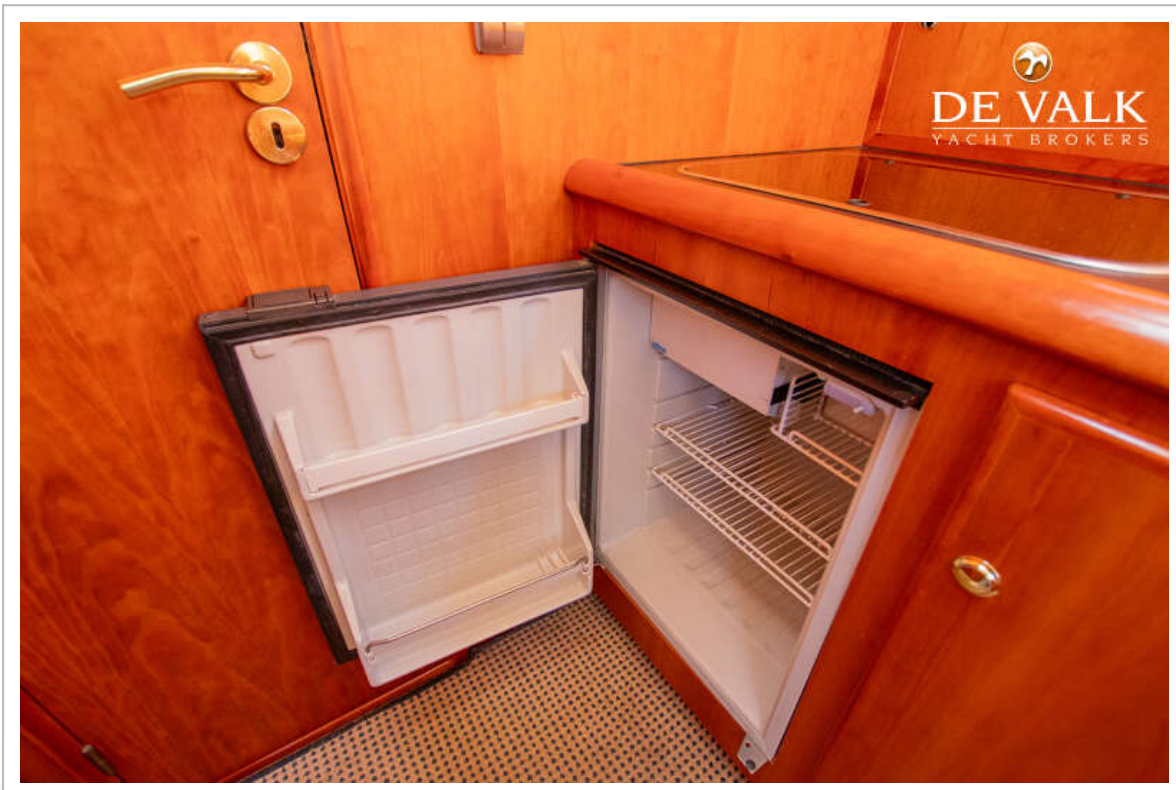
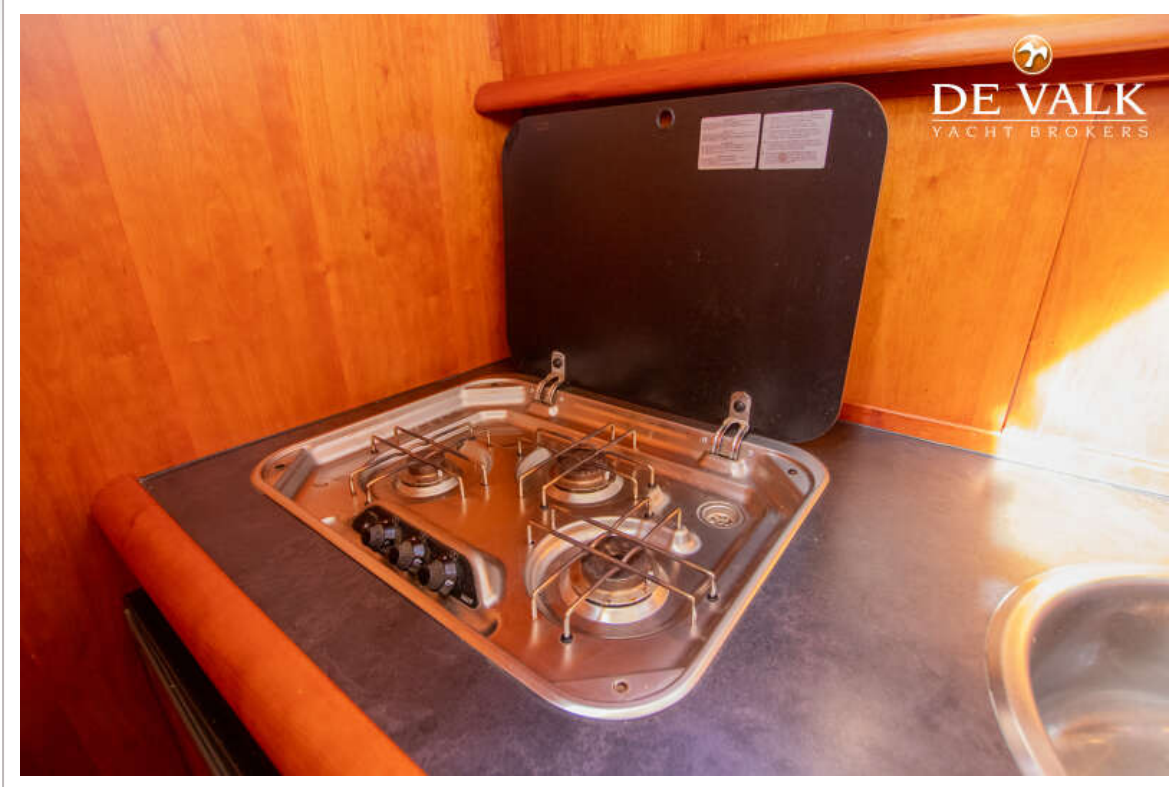
# JETTEN BULLY 960 OK



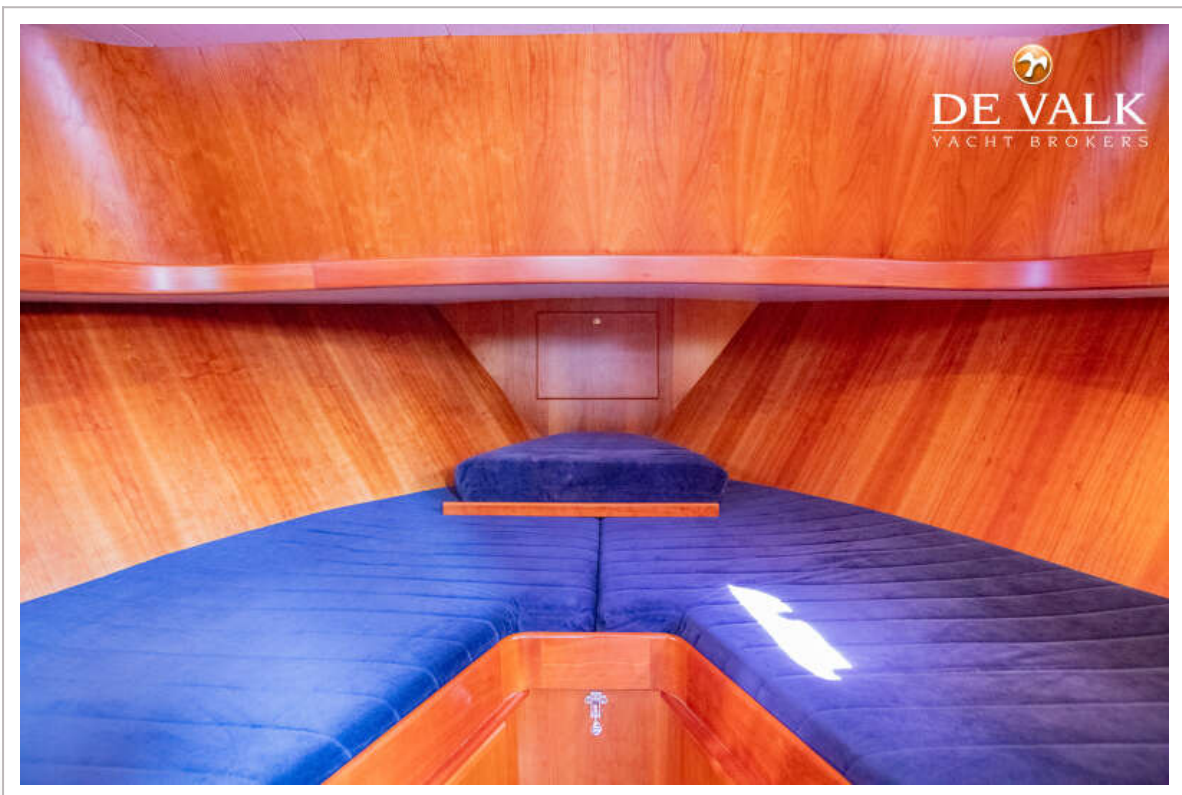
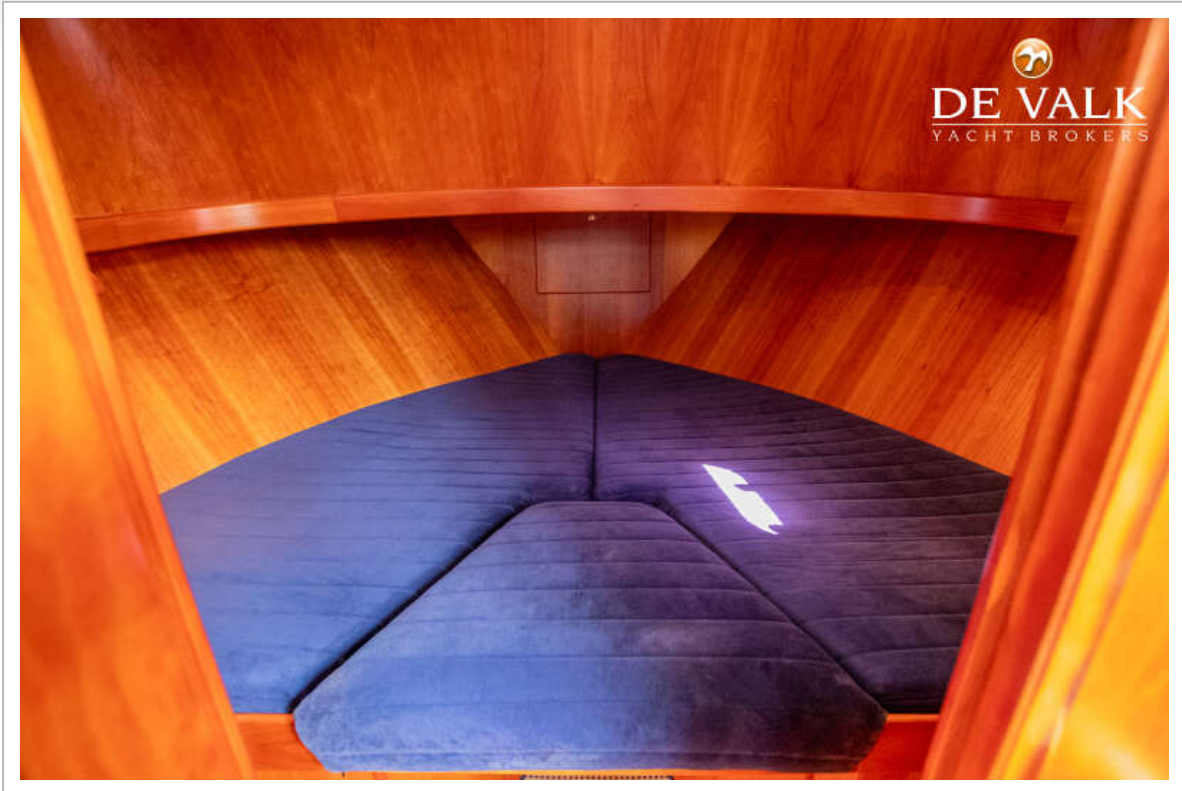
# JETTEN BULLY 960 OK



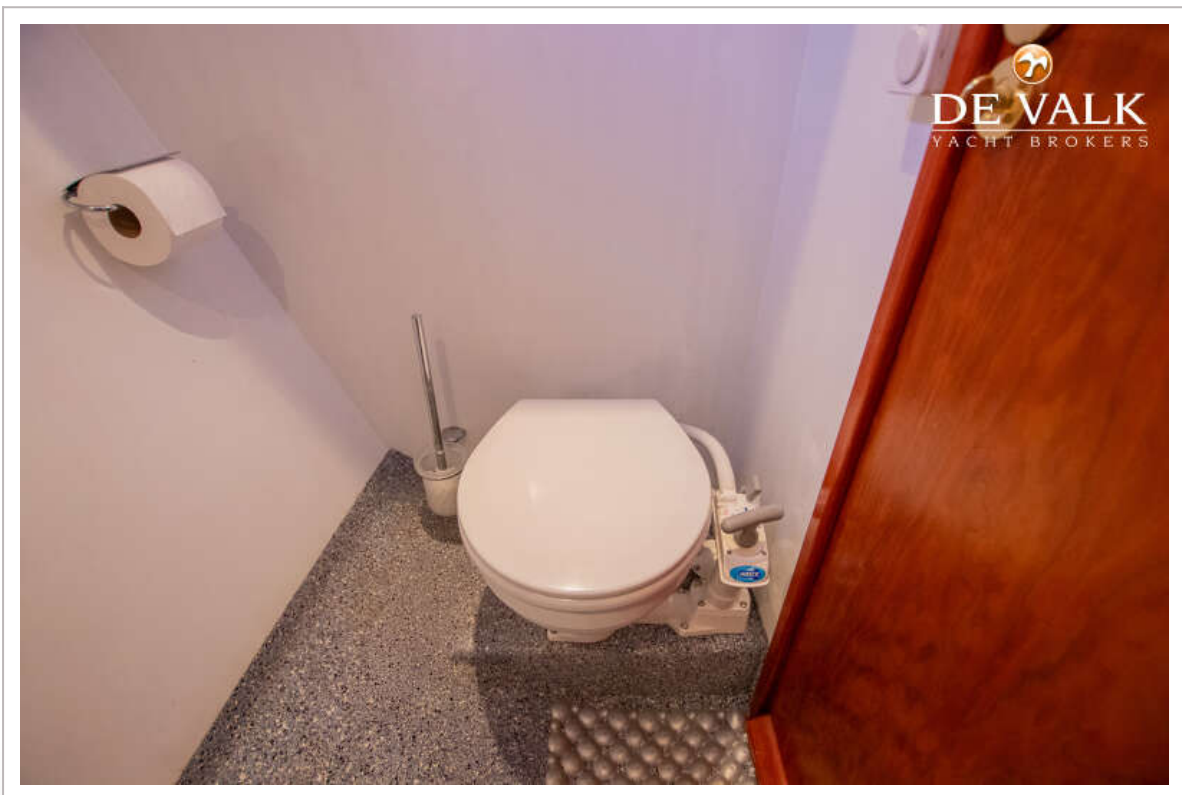
# JETTEN BULLY 960 OK



# JETTEN BULLY 960 OK



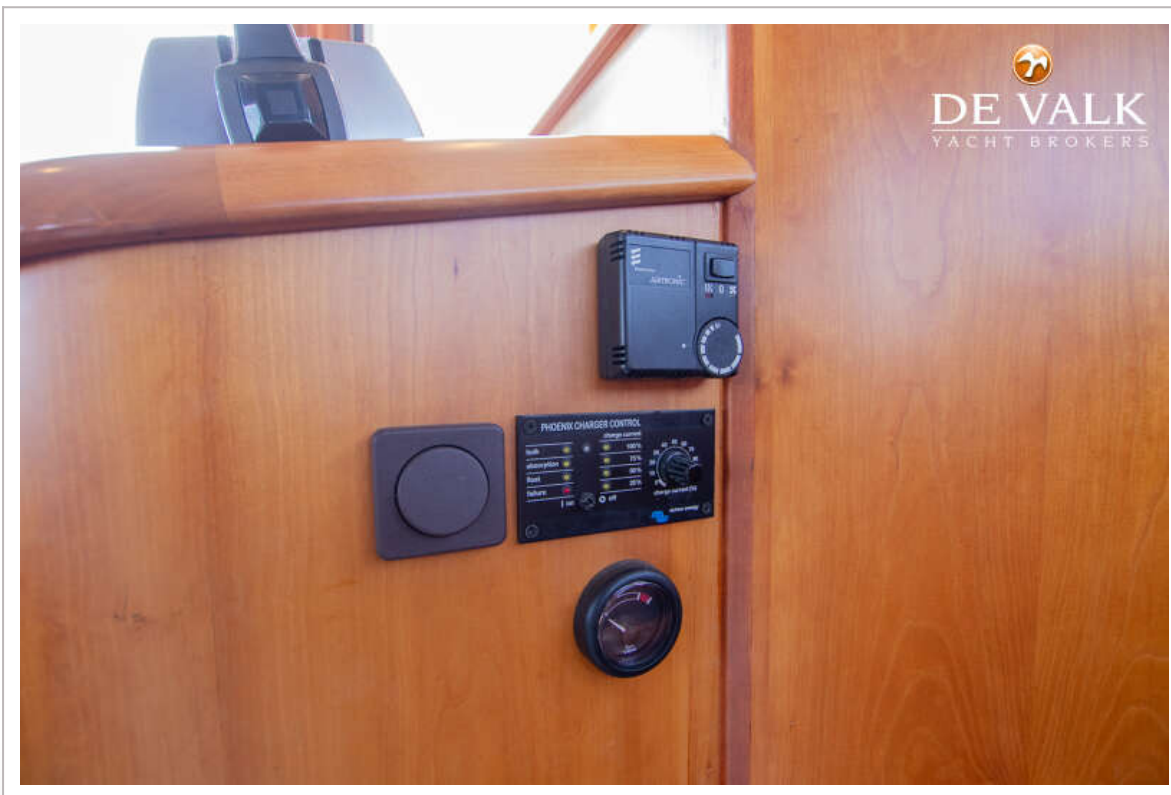
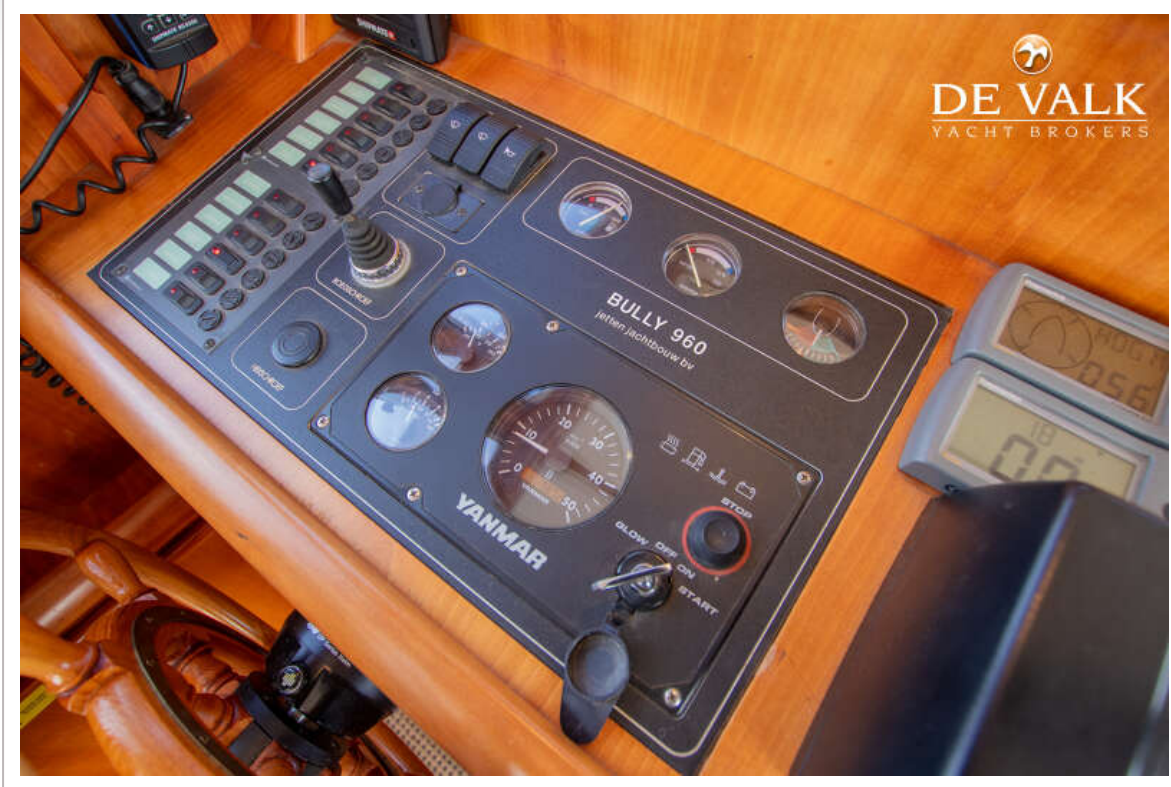
# JETTEN BULLY 960 OK



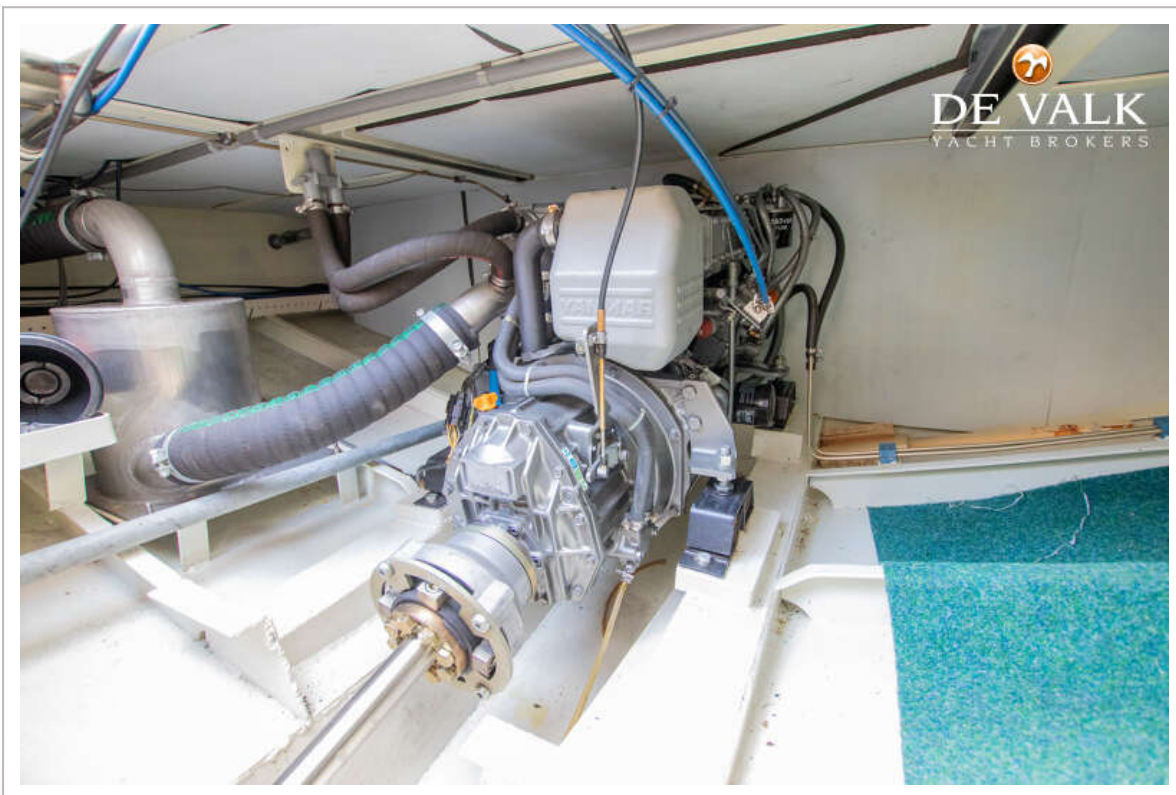
# JETTEN BULLY 960 OK



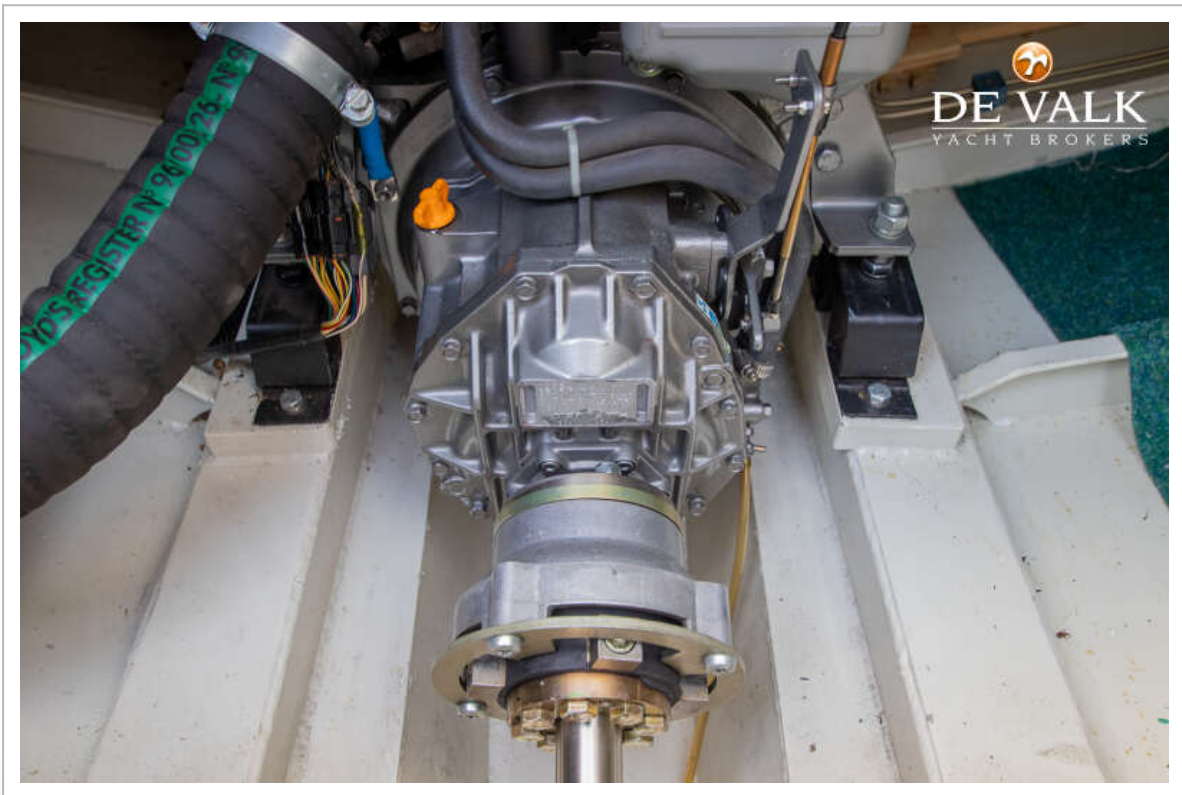
# JETTEN BULLY 960 OK



# JETTEN BULLY 960 OK



# JETTEN BULLY 960 OK



# JETTEN BULLY 960 OK

