



DE VALK  
YACHT BROKERS



## BREEDENDAM MTB 31



DE VALK  
YACHT BROKERS

# BREEDENDAM MTB 31

## BROKER'S COMMENTS

The Breedendam MTB 31 reflects the classic elegance for which Breedendam is renowned. With her beautiful lines, high-quality finish, and rich teak details, this is a stylish Dutch motor yacht with an exclusive appearance. The deep-V hull ensures comfortable and stable cruising characteristics, while the spacious open cockpit is ideal for relaxing days on the water. The warm and inviting interior offers plenty of comfort on board. A characterful and luxurious tender that effortlessly combines classic charm with modern cruising comfort.

*Hielke Peters*

## SPECIFICATIONS

<b>Dimensions</b>	9.40 x 2.80 x 0.90 (m)	<b>Builder</b>	Breedendam Yachts
<b>Built</b>	2003	<b>Cabins</b>	1
<b>Material</b>	Wood Epoxy	<b>Berths</b>	4
<b>Engine(s)</b>	1 x Volvo Penta diesel	<b>Hp/Kw</b>	190.00 (hp), 139.84 (kw)
<b>Asking price</b>	€ 139.500 (VAT Paid)	<b>Lying</b>	at sales office

## CONTACT

<b>Sales office</b>	De Valk Loosdrecht B.V.	<b>Telephone</b>	+31 (0)35 582 90 30
<b>Address</b>	't Breukeleveense Meentje 6 1231LM Loosdrecht / Wijdmeren NL	<b>E-mail</b>	loosdrecht@devalk.nl

## DISCLAIMER

These particulars are given in good faith as supplied but cannot be guaranteed.



## GENERAL

<b>Model</b>	BREEDENDAM MTB 31
<b>Type</b>	motor yacht
<b>LOA (m)</b>	9,40
<b>Beam (m)</b>	2,80
<b>Draft (m)</b>	0,90
<b>Year built</b>	2003
<b>Builder</b>	Breedendam Yachts
<b>Country</b>	The Netherlands
<b>CE norm</b>	C
<b>Hull material</b>	wood epoxy
<b>Hull shape</b>	deep-V
<b>Superstructure material</b>	wood epoxy
<b>Deck material</b>	wood
<b>Deck finish</b>	teak
<b>Cockpit deck finish</b>	teak
<b>Window frame</b>	brass
<b>Window material</b>	glass
<b>Deckhatch</b>	yes
<b>Portholes</b>	brass 6
<b>Fuel tank (litre)</b>	stainless steel 400
<b>Level indicator (fuel tank)</b>	yes
<b>Freshwater tank (litre)</b>	yes
<b>Blackwater tank (litre)</b>	yes
<b>Wheel steering</b>	hydraulic
<b>Outside helm position</b>	hydraulic

## ACCOMMODATION

<b>Cabins</b>	1
<b>Berths</b>	4
<b>Interior</b>	mahogany



# BREEDENDAM MTB 31

Layout	yes
Floor	teak
Open cockpit	yes
Heating	diesel ducted hot air Eberspacher
Sink	stainless steel
Cooker	calor gas 2
Oven	Gas
Fridge	yes
Water pressure system	electrical
Owners cabin	twin single
Bathroom	shared
Toilet	shared
Toilet system	electric
Wash basin	at the toilet
Shower	separate

## MACHINERY

No of engines	1
Make	Volvo Penta
HP	190
kW	139.84
Fuel	diesel
Maximum speed (kn)	23
Cruising speed (kn)	16
Engine cooling system	freshwater heat exchanger
Drive	stern
Engine controls	bowden cable
Gearbox	mechanical
Bowthruster	electric Sidepower
Exhaust	watercooled
Propeller type	fixed Duoprop



<b>Batteries</b>	yes
<b>Battery charger</b>	Victron 12/7
<b>Battery charger/inverter</b>	Victron Multiplus 12/1200/50
<b>Shorepower</b>	with cable

## NAVIGATION

<b>VHF</b>	Shipmate RS 8300
<b>Plotter/GPS</b>	Simrad CE33
<b>Navigation lights</b>	yes

## EQUIPMENT

<b>Fixed windscreen</b>	yes
<b>Sprayhood</b>	yes
<b>Cockpit cover</b>	yes
<b>Cockpit cushions</b>	yes
<b>Cockpit table</b>	yes
<b>Bathing platform</b>	yes
<b>Boarding ladder</b>	stainless steel
<b>Anchor</b>	yes
<b>Anchor chain</b>	yes
<b>Horn</b>	yes
<b>Fenders</b>	yes
<b>Mooring lines</b>	yes
<b>Radio-cd player</b>	yes



# BREEDENDAM MTB 31



# BREEDENDAM MTB 31



# BREEDENDAM MTB 31



# BREEDENDAM MTB 31



# BREEDENDAM MTB 31



# BREEDENDAM MTB 31

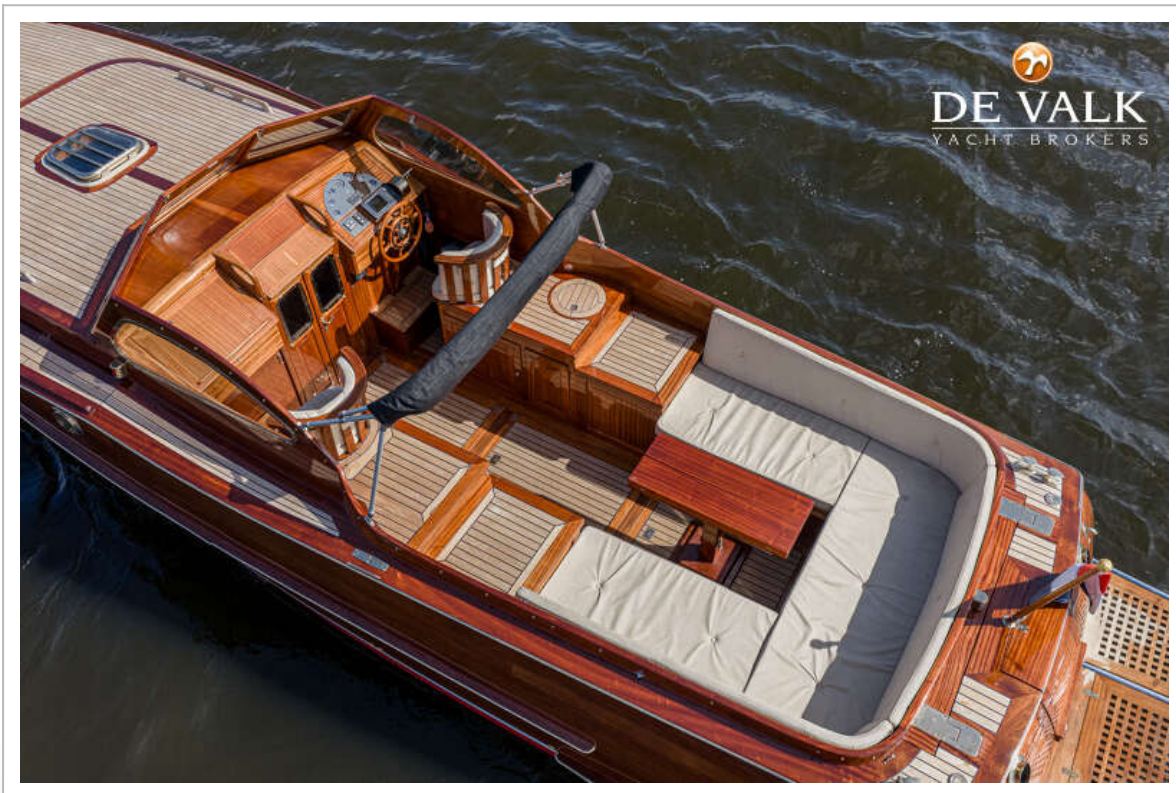




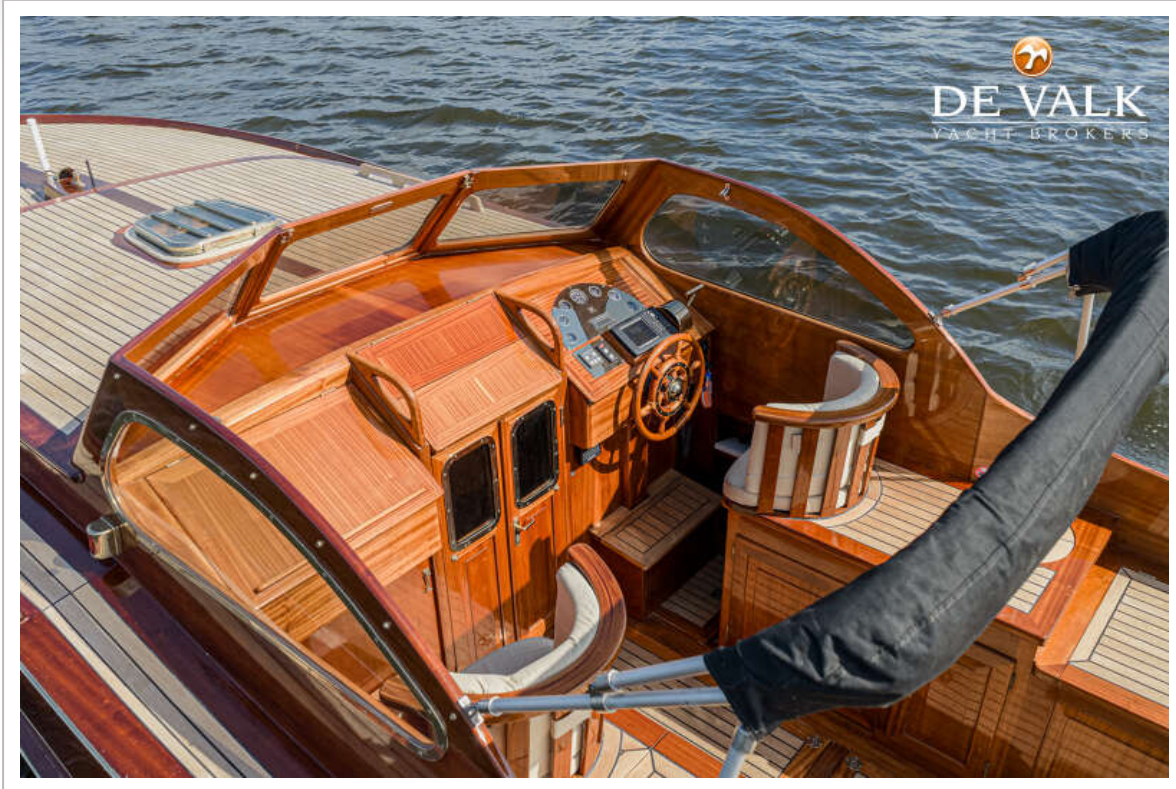
# BREEDENDAM MTB 31



# BREEDENDAM MTB 31



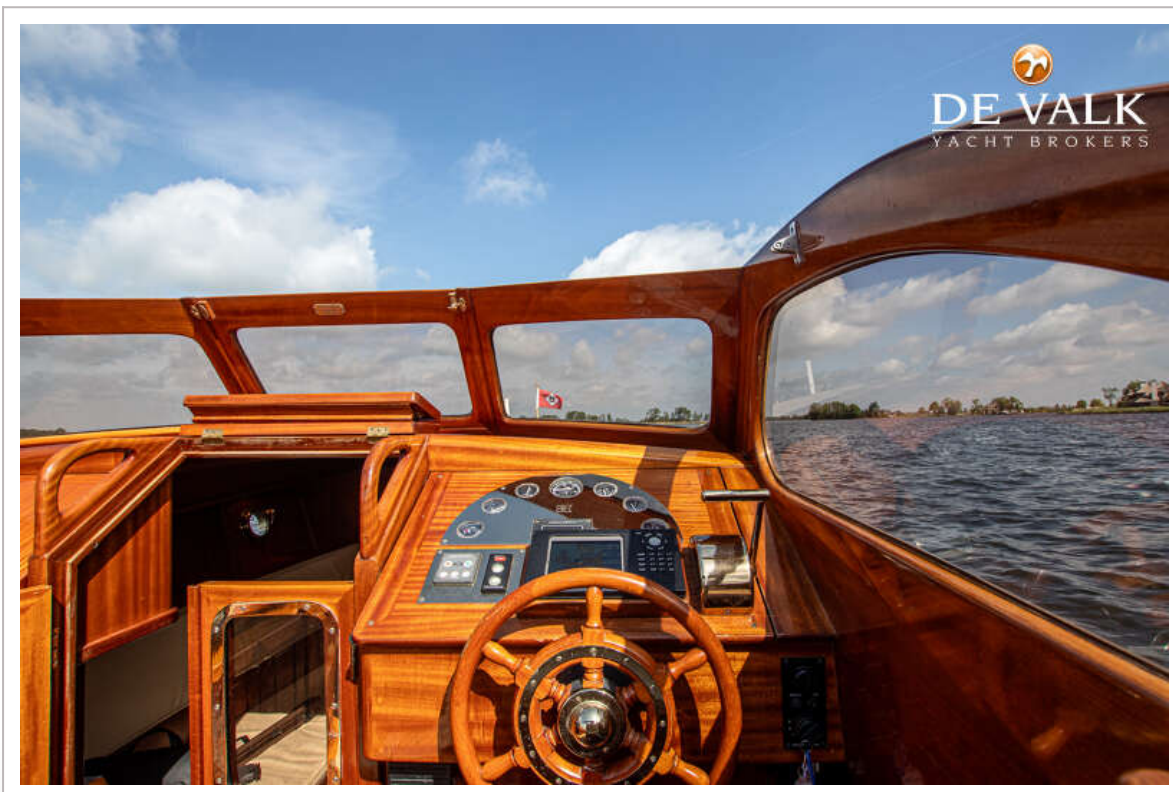
# BREEDENDAM MTB 31



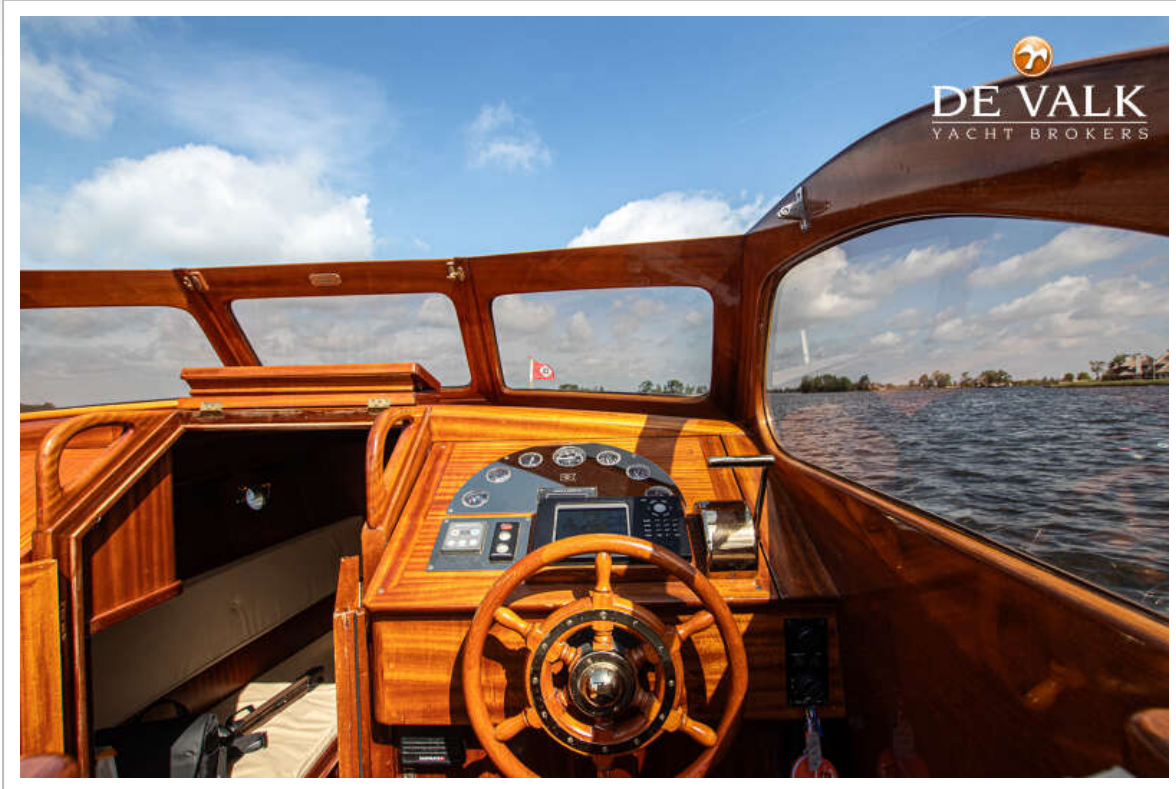
# BREEDENDAM MTB 31



# BREEDENDAM MTB 31



# BREEDENDAM MTB 31



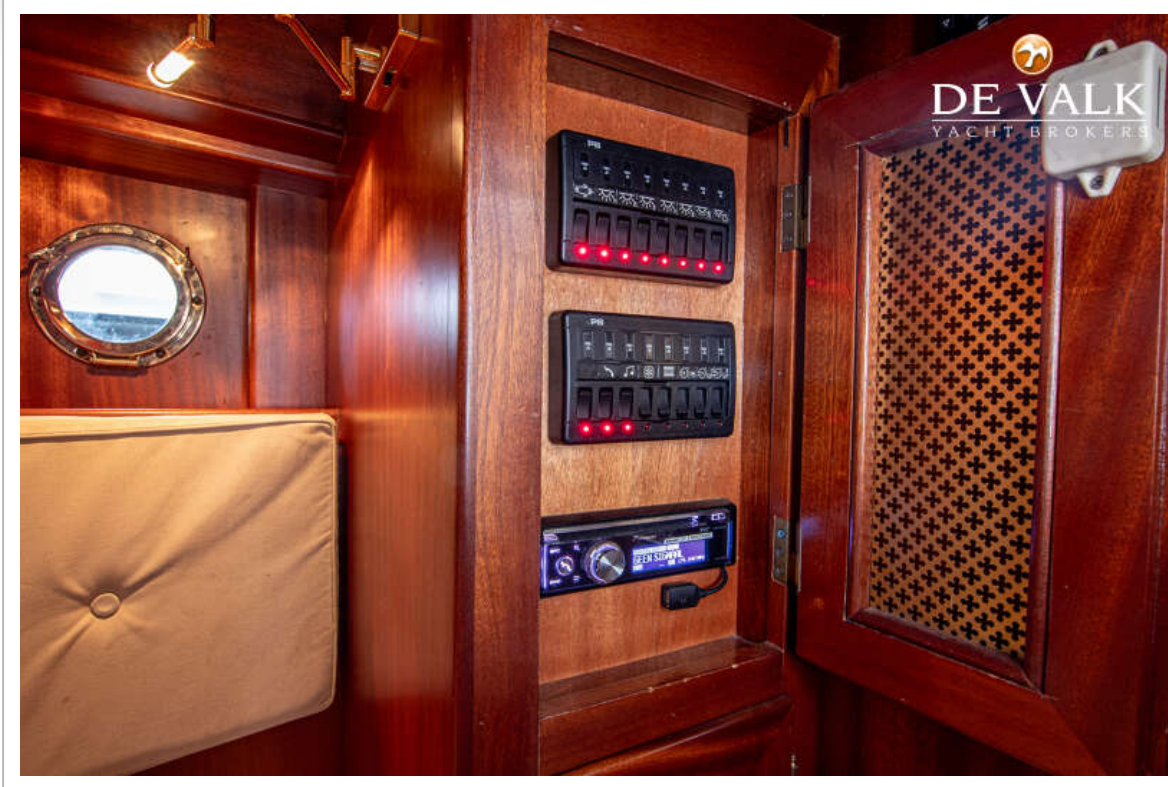
# BREEDENDAM MTB 31



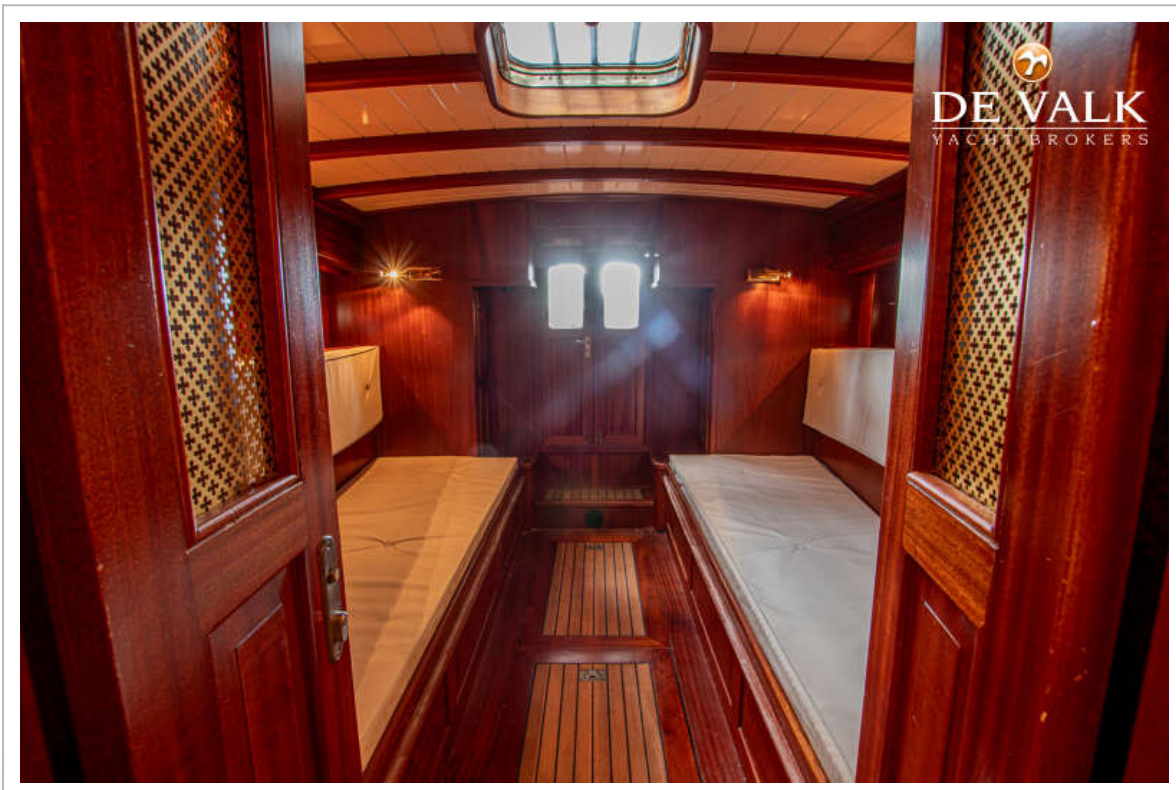
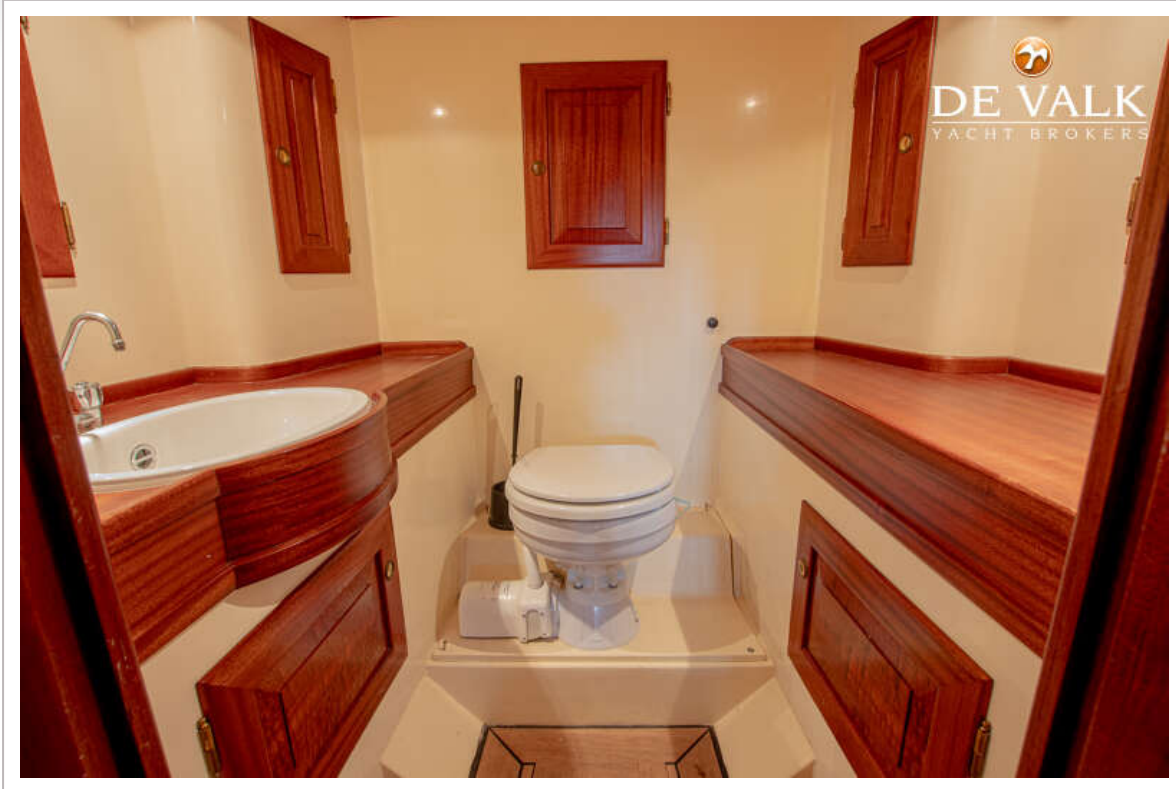
# BREEDENDAM MTB 31



# BREEDENDAM MTB 31



# BREEDENDAM MTB 31



# BREEDENDAM MTB 31



# BREEDENDAM MTB 31



# BREEDENDAM MTB 31

