



DE VALK  
YACHT BROKERS



## SUNSEEKER SUPERHAWK 48



DE VALK  
YACHT BROKERS

# SUNSEEKER SUPERHAWK 48

## BROKER'S COMMENTS

The Sunseeker Superhawk 48 is an iconic high-performance offshore sports cruiser, renowned for its sleek 90s styling, triple-engine setup, and aggressive deep-V hull. Combining speed, luxury, and timeless design, she delivers exhilarating performance with exceptional handling in offshore conditions. The Sunseeker Superhawk 48 spacious cockpit is ideal for entertaining, while the well-appointed interior offers comfortable accommodation for weekend cruising. A rare opportunity to own a true Sunseeker classic.

*Raoul van der Werf*

## SPECIFICATIONS

<b>Dimensions</b>	14.78 x 3.25 x 0.84 (m)	<b>Builder</b>	Sunseeker
<b>Built</b>	1996	<b>Cabins</b>	1
<b>Material</b>	GRP	<b>Berths</b>	4
<b>Engine(s)</b>	3 x Yanmar ME420 diesel	<b>Hp/Kw</b>	3 x 250.00 (hp), 184.00 (kw)
<b>Asking price</b>	€ 145.000 (VAT Paid)	<b>Lying</b>	elsewhere / Not at sales office

## CONTACT

<b>Sales office</b>	De Valk Antibes	<b>Telephone</b>	+33 492 91 0202
<b>Address</b>	2, Avenue de Verdun 06600 Antibes FR	<b>E-mail</b>	antibes@devalk.nl

## DISCLAIMER

These particulars are given in good faith as supplied but cannot be guaranteed.



# SUNSEEKER SUPERHAWK 48

## GENERAL

<b>Model</b>	SUNSEEKER SUPERHAWK 48
<b>Type</b>	motor yacht
<b>LOA (m)</b>	14,78
<b>Beam (m)</b>	3,25
<b>Draft (m)</b>	0,84
<b>Year built</b>	1996
<b>Builder</b>	Sunseeker
<b>Country</b>	United Kingdom
<b>Designer</b>	Sunseeker design team
<b>Displacement (t)</b>	10
<b>CE norm</b>	B
<b>Hull material</b>	GRP
<b>Hull colour</b>	blue
<b>Hull shape</b>	deep-V
<b>Superstructure material</b>	GRP
<b>Deck material</b>	GRP
<b>Deck finish</b>	non-skid moulded in
<b>Antifouling (year)</b>	2025
<b>Portholes</b>	yes
<b>Radar arch</b>	non collapsible
<b>Fuel tank (litre)</b>	1030L
<b>Level indicator (fuel tank)</b>	yes
<b>Freshwater tank (litre)</b>	210L
<b>Level indicator (freshwater)</b>	yes
<b>Outside helm position</b>	yes

## ACCOMMODATION

<b>Cabins</b>	1
<b>Berths</b>	4
<b>Interior</b>	cherry



# SUNSEEKER SUPERHAWK 48

Open cockpit	yes
Saloon	yes
Air-conditioning	yes
Navigation center	yes
Convertible berth	yes
Galley	yes
Countertop	Duropol
Sink	GRP
Cooker	ceramic 2 burners
Microwave	yes
Fridge	yes
Freezer	yes
Hot water system	yes
Water pressure system	yes
Hot water tap	yes
Crockery	yes
Owners cabin	double bed
Bed length (m)	2m
Wardrobe	drawers and shelves
Bathroom	en suite
Toilet	en suite
Toilet system	yes
Wash basin	yes
Shower	en suite

## MACHINERY

No of engines	3
Make	Yanmar
Type	ME420
HP	250
kW	184



# SUNSEEKER SUPERHAWK 48

Fuel	diesel
Maximum speed (kn)	35
Cruising speed (kn)	40
Engine cooling system	freshwater heat exchanger
Drive	stern
Bowthruster	electric
Propeller type	fixed
Propeller blades	3
Manual bilge pump	yes
Electric bilge pump	yes
Bilge alarm	yes
Generator	yes
Batteries	yes
Start battery	yes
Service battery	yes
Bowthruster battery	yes
Windlass battery	yes
Battery charger	yes
Shorepower	with cable
Trimtabs	yes

## NAVIGATION

Compass	yes
Depth sounder	yes
VHF	yes
GPS	Raymarine Axiom
Plotter	Raymarine C60
Electronic chart(s)	yes
Navigation lights	yes
Searchlight	yes



## EQUIPMENT

Cockpit cover	yes
Bimini	yes
Cockpit cushions	yes
Cockpit table	yes
Bathing platform	yes
Boarding ladder	stainless steel
Gangway	yes
Deck shower	yes
Anchor	yes
Anchor chain	yes
Windlass	yes
Horn	yes
Fenders	yes
Mooring lines	yes
TV	yes
Radio	yes
Cockpit speakers	yes
Speakers in salon	yes



# SUNSEEKER SUPERHAWK 48



# SUNSEEKER SUPERHAWK 48



# SUNSEEKER SUPERHAWK 48



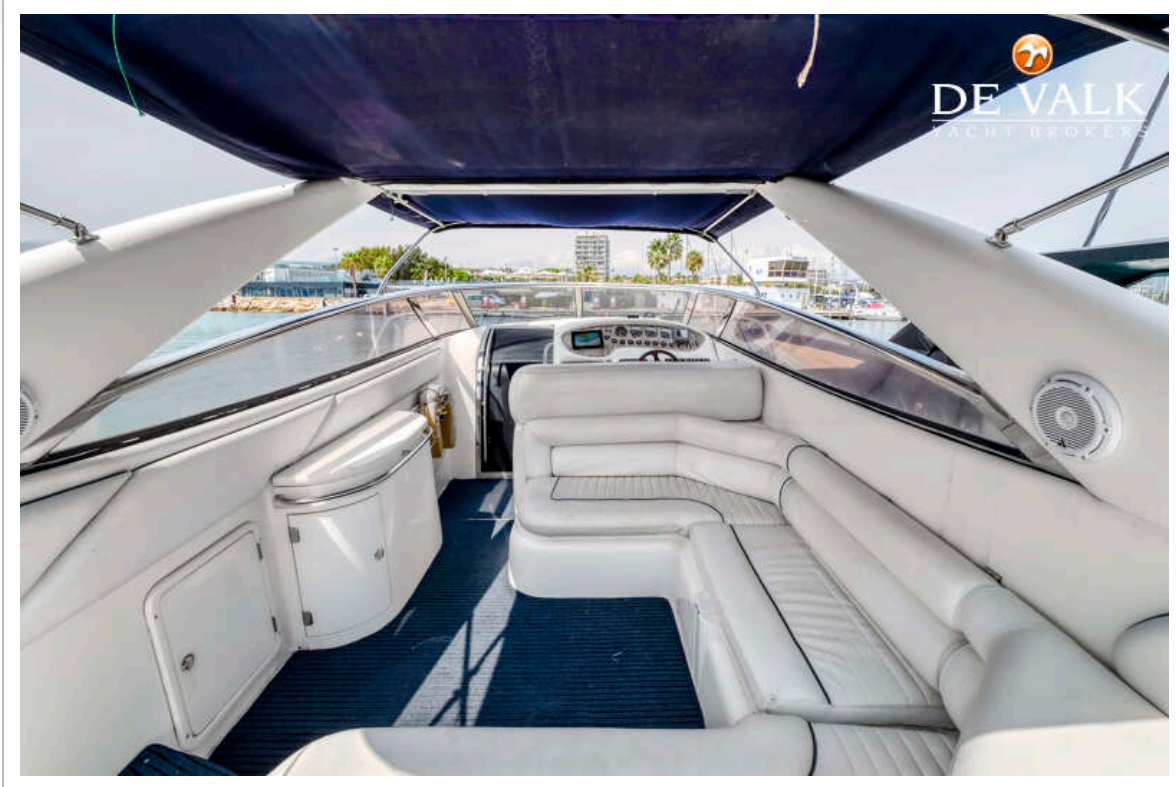
# SUNSEEKER SUPERHAWK 48



# SUNSEEKER SUPERHAWK 48



# SUNSEEKER SUPERHAWK 48



# SUNSEEKER SUPERHAWK 48



# SUNSEEKER SUPERHAWK 48



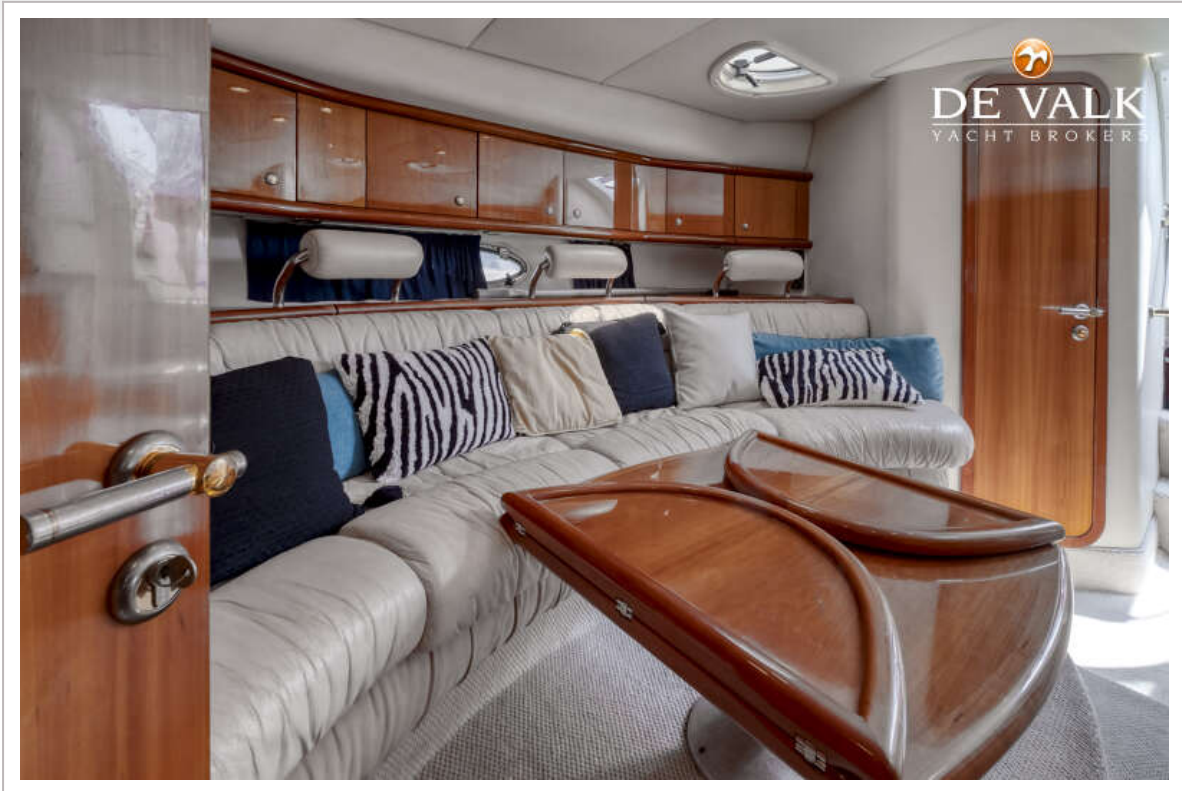
# SUNSEEKER SUPERHAWK 48



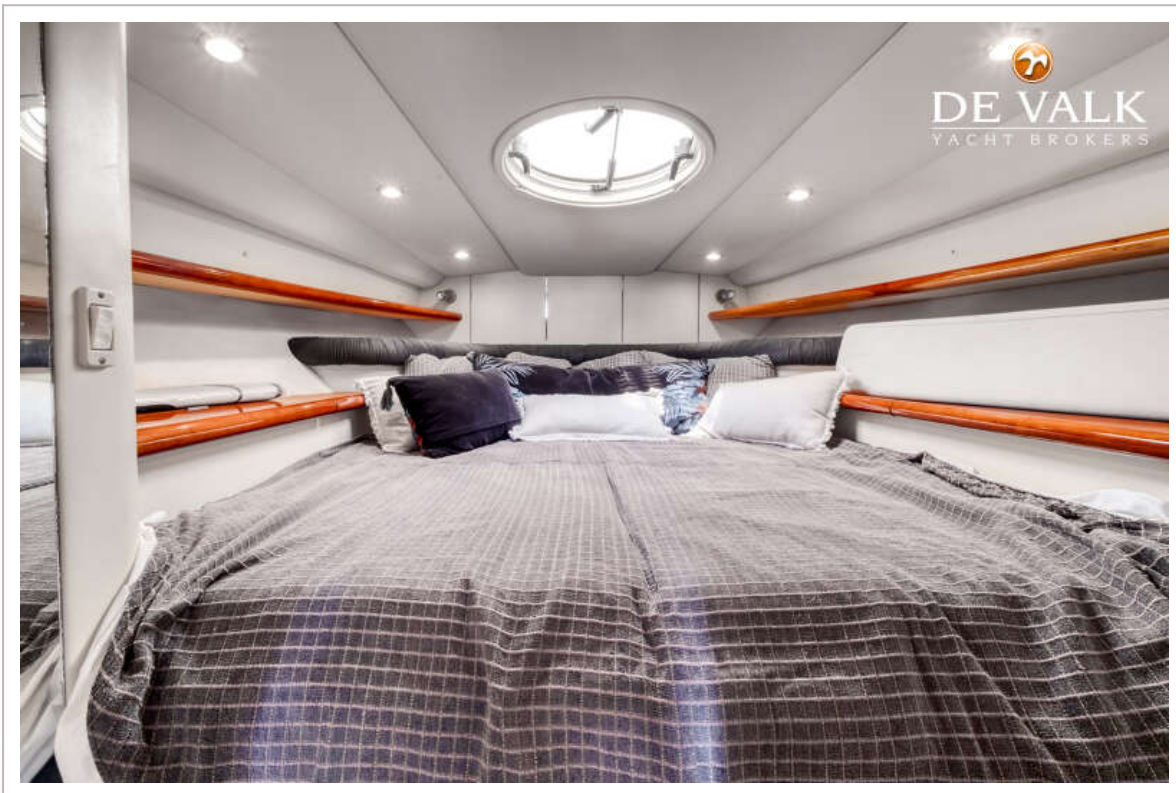
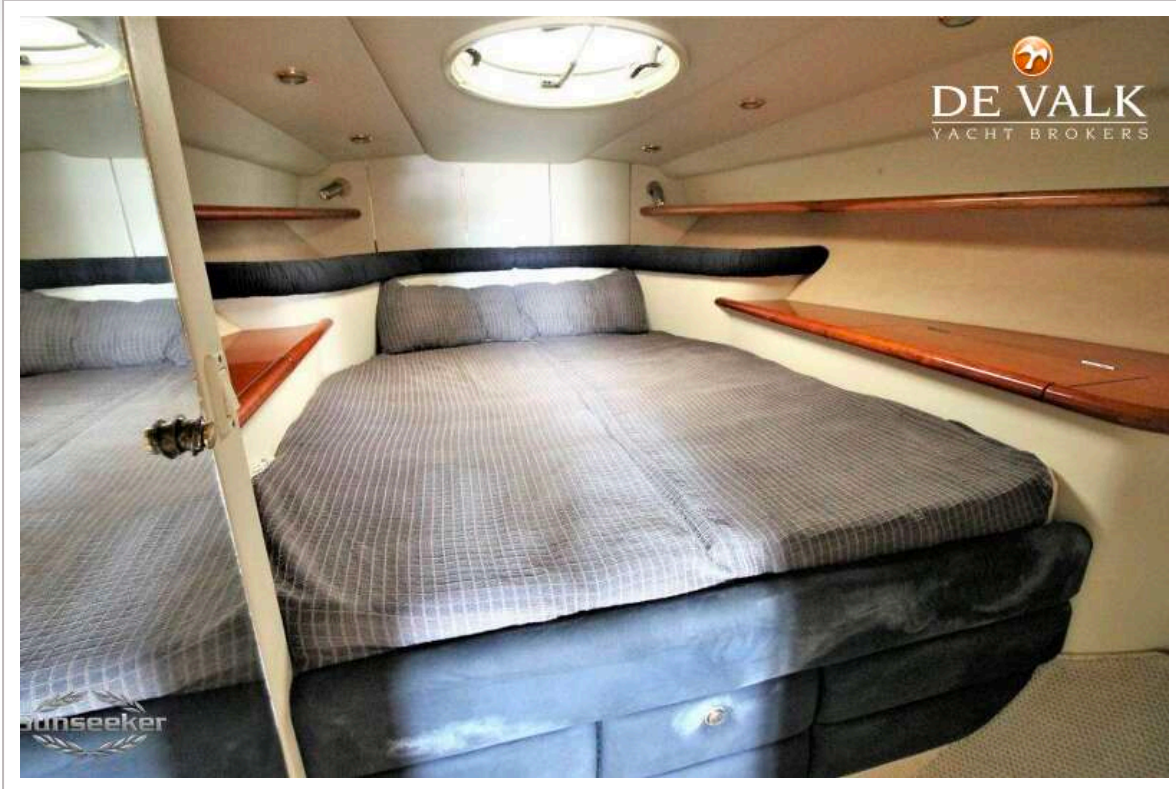
# SUNSEEKER SUPERHAWK 48



# SUNSEEKER SUPERHAWK 48



# SUNSEEKER SUPERHAWK 48



# SUNSEEKER SUPERHAWK 48



# SUNSEEKER SUPERHAWK 48

