



DE VALK  
YACHT BROKERS



## HALLBERG RASSY 42 E



DE VALK  
YACHT BROKERS

# HALLBERG RASSY 42 E

## BROKER'S COMMENTS

Popular HR 42E in stunning, superb state. The engine was replaced in 2003 by a 5-cylinder VW with immense torque. A proven ocean-going cruiser, Lloyds certified, admired for its sturdy build, spacious layout, and dependable sailing characteristics. Traditional Ole Enderlein HR design with center-cockpit and flushdeck, ideal for serious passage-makers. This yacht had 3 owners and was in the Med until 2020 before coming to Holland. Fully ready to go, though note that covers and cushions need replacement, partly due to a changed perpendicular bed position suitable for tall sailors over 1.90m.

*Reinier van der Wolf*

## SPECIFICATIONS

<b>Dimensions</b>	12.98 x 3.84 x 1.85 (m)	<b>Builder</b>	Hallberg Rassy Varvs AB, Ellös
<b>Built</b>	1989	<b>Cabins</b>	2
<b>Material</b>	GRP	<b>Berths</b>	9
<b>Engine(s)</b>	1 x Volkswagen SDI 55-5 diesel	<b>Hp/Kw</b>	55.00 (hp), 40.48 (kw)
<b>Asking price</b>	€ 129.000 (VAT Paid)	<b>Lying</b>	at sales office

## CONTACT

<b>Sales office</b>	De Valk Monnickendam B.V.	<b>Telephone</b>	+31 (0)299 65 63 50
<b>Address</b>	Hoogedijk 6 1145 PM Katwoude NL	<b>E-mail</b>	monnickendam@devalk.nl

## DISCLAIMER

These particulars are given in good faith as supplied but cannot be guaranteed.



# HALLBERG RASSY 42 E

## GENERAL

<b>Model</b>	HALLBERG RASSY 42 E
<b>Type</b>	sailing yacht
<b>LOA (m)</b>	12,98
<b>LWL (m)</b>	10,49
<b>Beam (m)</b>	3,84
<b>Draft (m)</b>	1,85
<b>Headroom (m)</b>	2,00
<b>Year built</b>	1989
<b>Builder</b>	Hallberg Rassy Varvs AB, Ellös
<b>Country</b>	Sweden
<b>Designer</b>	C. Rassy / O. Enderlein
<b>Displacement (t)</b>	11,5
<b>Ballast (tonnes)</b>	cast iron   4,5
<b>CE norm</b>	NA
<b>Hull material</b>	GRP
<b>Hull colour</b>	white   with marina blue decoration strip
<b>Hull shape</b>	round-bilged
<b>Keel type</b>	fin keel
<b>Superstructure material</b>	GRP
<b>Rubbing strake</b>	stainless steel
<b>Deck material</b>	GRP   GRP-sandwich construction 25 mm with polyvinyl cellular
<b>Deck finish</b>	teak
<b>Cockpit deck finish</b>	teak
<b>Antifouling (year)</b>	hard anti-fouling   2019
<b>Dorades</b>	2
<b>Window frame</b>	aluminium
<b>Window material</b>	glass
<b>Deckhatch</b>	4
<b>Portholes</b>	yes
<b>Insulation</b>	yes



# HALLBERG RASSY 42 E

<b>Radar arch</b>	yes
<b>Fuel tank (litre)</b>	stainless steel   195
<b>Fuel tank 2 (litre)</b>	stainless steel   150 (with inspection ports)
<b>Level indicator (fuel tank)</b>	yes
<b>Freshwater tank (litre)</b>	GRP   670
<b>Level indicator (freshwater)</b>	yes
<b>Greywater tank (litre)</b>	yes
<b>Wheel steering</b>	cable steering
<b>Outside helm position</b>	yes
<b>Emergency tiller</b>	yes
<b>Extra info</b>	Fuel tanks cleaned in 2023

## ACCOMMODATION

<b>Cabins</b>	2
<b>Berths</b>	9
<b>Interior</b>	teak
<b>Layout</b>	In the bow, there is a V-berth with its own en-suite head, followed by a spacious saloon featuring two settees and a large folding table. The navigation station is located to port side, while the U-shaped galley is situated to starboard, also serving as the walkthrough to the generous owner's cabin in the stern; this aft cabin features its own private head and shower.
<b>Open cockpit</b>	yes
<b>Saloon</b>	yes
<b>Heating</b>	diesel ducted hot air   Webasto
<b>Chart table</b>	yes
<b>Aft Cabin</b>	yes
<b>Galley</b>	U-shaped
<b>Countertop</b>	Teak look plastic laminate
<b>Sink</b>	stainless steel   double
<b>Cooker</b>	calor gas   Domatic 3 burner electronic ignition (2015)
<b>Oven</b>	yes



# HALLBERG RASSY 42 E

<b>Fridge</b>	Refrigeration compressor plates and controller (2023)
<b>Hot water system</b>	220V + engine   40 l. boiler
<b>Water pressure system</b>	electrical
<b>Manual and/or foot pump</b>	Salt and fresh water combined
<b>Owners cabin</b>	double bed + single bed
<b>Bed length (m)</b>	2 m x 135 cm   2 m x 71 cm
<b>Wardrobe</b>	shelves
<b>Bathroom</b>	en suite
<b>Toilet</b>	en suite
<b>Toilet system</b>	manual
<b>Wash basin</b>	in the bathroom
<b>Guest cabin 1</b>	twin single
<b>Bed length (m)</b>	2 m
<b>Wardrobe</b>	hanging and shelves
<b>Bathroom</b>	separate
<b>Toilet</b>	separate
<b>Toilet system</b>	manual
<b>Wash basin</b>	in the bathroom
<b>Shower</b>	separate

## MACHINERY

<b>No of engines</b>	1
<b>Make</b>	Volkswagen
<b>Type</b>	SDI 55-5
<b>HP</b>	55
<b>kW</b>	40.48
<b>Fuel</b>	diesel
<b>Year installed</b>	2003
<b>Maximum speed (kn)</b>	8,5
<b>Cruising speed (kn)</b>	7
<b>Consumption (l/hr)</b>	3,5



# HALLBERG RASSY 42 E

<b>Engine cooling system</b>	freshwater heat exchanger
<b>Drive</b>	shaft
<b>Shaft seal</b>	yes
<b>Engine controls</b>	bowden cable
<b>Gearbox</b>	yes
<b>Bowthruster</b>	electric   Maxpower
<b>Exhaust</b>	watercooled
<b>Propeller type</b>	fixed
<b>Propeller blades</b>	3
<b>Propeller shaft material</b>	stainless steel
<b>Shaft lubrication</b>	water
<b>Manual bilge pump</b>	yes
<b>Electric bilge pump</b>	yes
<b>Electrical installation</b>	220v   24v
<b>Batteries</b>	yes
<b>Start battery</b>	1x 95 Ah (2025)
<b>Service battery</b>	Victron Lithium LiFeP04 Smart battery 12,8 V/160 Ah (2022)
<b>Bowthruster battery</b>	Victron AGM 110 Ah (2022)
<b>Battery monitor</b>	Victron Smart BMS 12/200 (2022)
<b>Battery charger</b>	Victron 12/1600/70
<b>Inverter</b>	Victron, Multiplus Compact 1600 / 701
<b>Solar panel</b>	2 x 85 Watt
<b>Shorepower</b>	with cable

## NAVIGATION

<b>Compass</b>	yes
<b>Depth sounder/log</b>	Raymarine I-70 (2014)
<b>Windset</b>	Raymarine I-70 (2014)
<b>VHF</b>	Simrad RS 35 AIS/ DSC + wireless remote (2014)
<b>Autopilot</b>	Raymarine Smartpilot (2014)
<b>Rudder angle indicator</b>	on Raymarine Smartpilot



# HALLBERG RASSY 42 E

<b>Radar</b>	Raymarine 45 cm radome (2020)
<b>Radar/GPS/plotter</b>	C 120 New (2014)
<b>Navtex</b>	ICS Nav4
<b>AIS transponder</b>	Raymarine (2016)
<b>Navigation lights</b>	LED   Hella
<b>Extra info</b>	Wi-Fi connection to the mainland: antennas, cables, and plugs have been installed. They still need to be extended indoors.

## EQUIPMENT

<b>Sprayhood</b>	yes
<b>Cockpit cover</b>	yes
<b>Bimini</b>	yes
<b>Cockpit cushions</b>	yes
<b>Boarding ladder</b>	aluminum
<b>Bow ladder</b>	yes
<b>Gangway</b>	yes
<b>Deck shower</b>	yes
<b>Anchor</b>	Delta   45 kg
<b>Anchor chain</b>	80 m.
<b>Windlass</b>	electrical
<b>Dinghy</b>	yes
<b>Outboard</b>	Yamaha
<b>Outboard support</b>	yes
<b>Sea railing</b>	wire
<b>Pushpit</b>	yes
<b>Pulpit</b>	yes
<b>Life raft</b>	yes
<b>Danbuoy</b>	yes
<b>Rope cutter</b>	yes
<b>Fenders</b>	yes
<b>Mooring lines</b>	yes



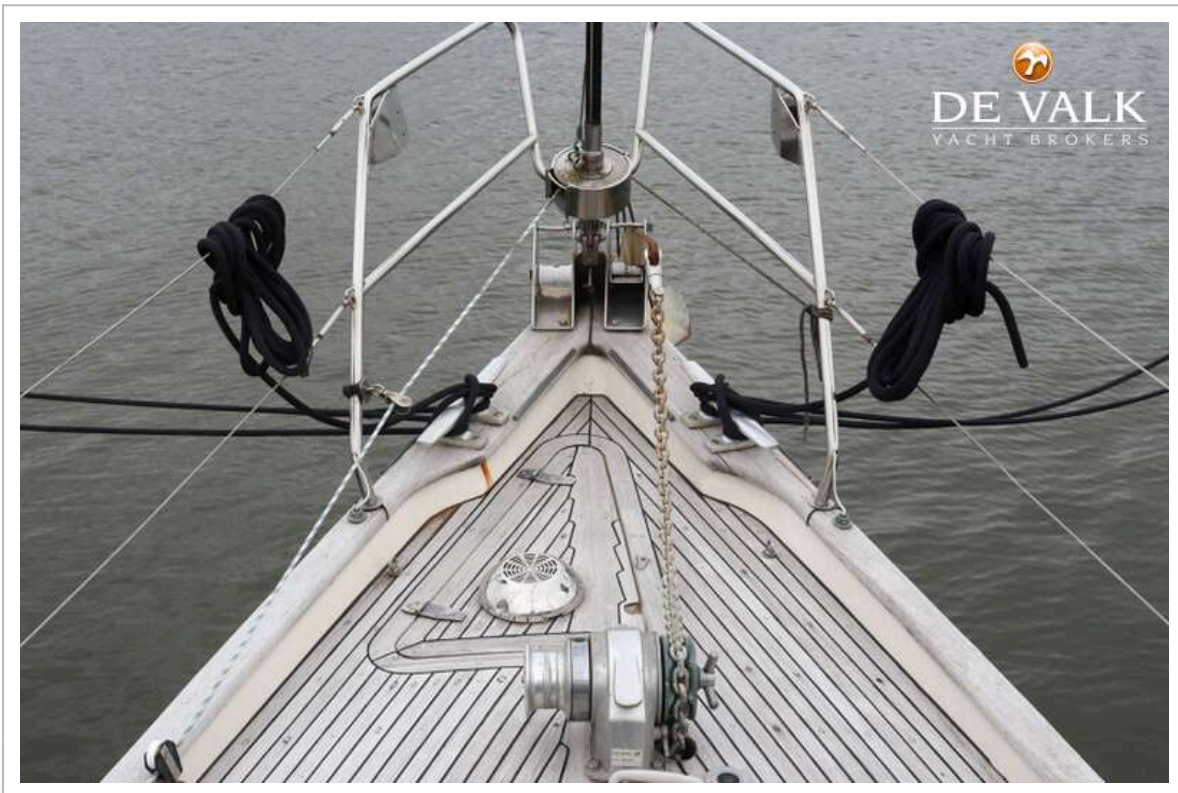
<b>Spare parts</b>	yes
<b>Radio-cd player</b>	yes
<b>Speakers in salon</b>	yes

## RIGGING

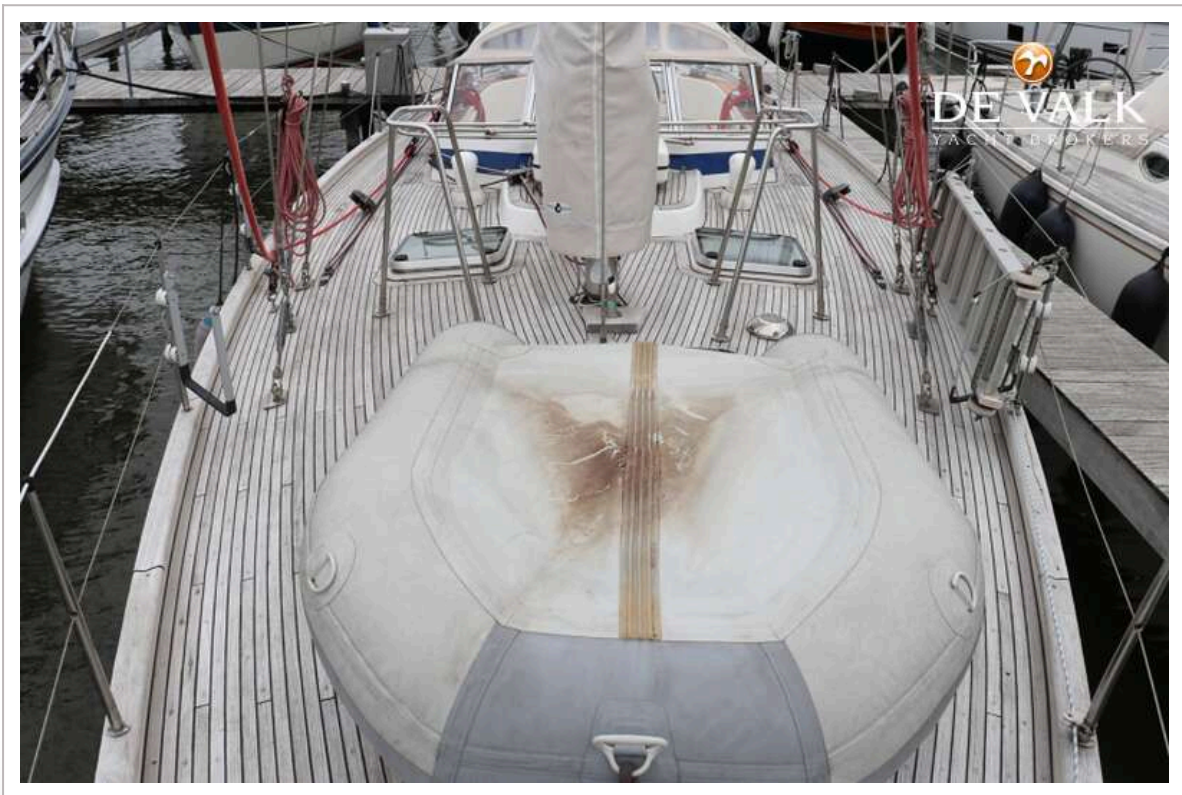
<b>Rigging</b>	sloop
<b>Standing rigging</b>	wire
<b>Brand mast</b>	Seldén Mast AB, Sweden
<b>Material mast</b>	aluminium   with steps in mast
<b>Spreaders</b>	2
<b>Mainsail</b>	35 m2
<b>Stoway mast</b>	yes
<b>Cutterstay</b>	yes
<b>Genoa</b>	yes
<b>Backstay adjuster</b>	yes
<b>Boomvang</b>	yes
<b>Genoa sheetwinches</b>	Lewmar 55 C
<b>Halyard winches</b>	Lewmar 40 CST



# HALLBERG RASSY 42 E



# HALLBERG RASSY 42 E



# HALLBERG RASSY 42 E



# HALLBERG RASSY 42 E



# HALLBERG RASSY 42 E



# HALLBERG RASSY 42 E



# HALLBERG RASSY 42 E



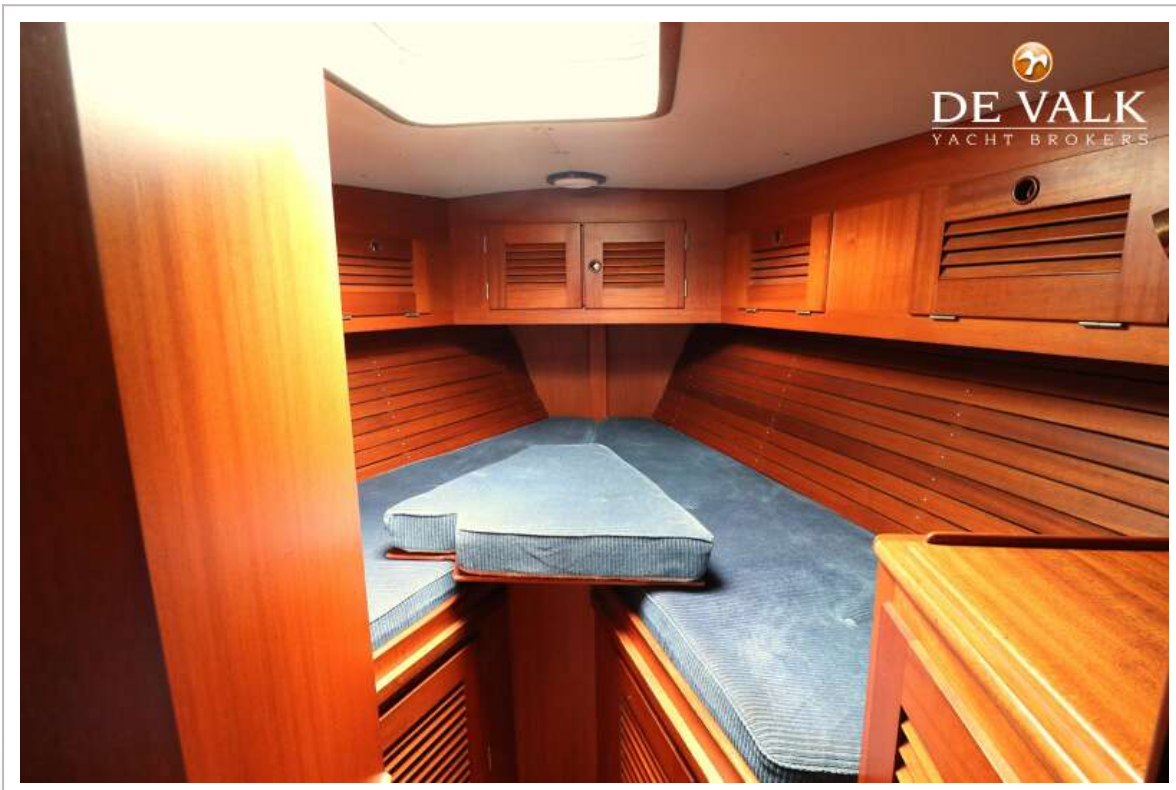
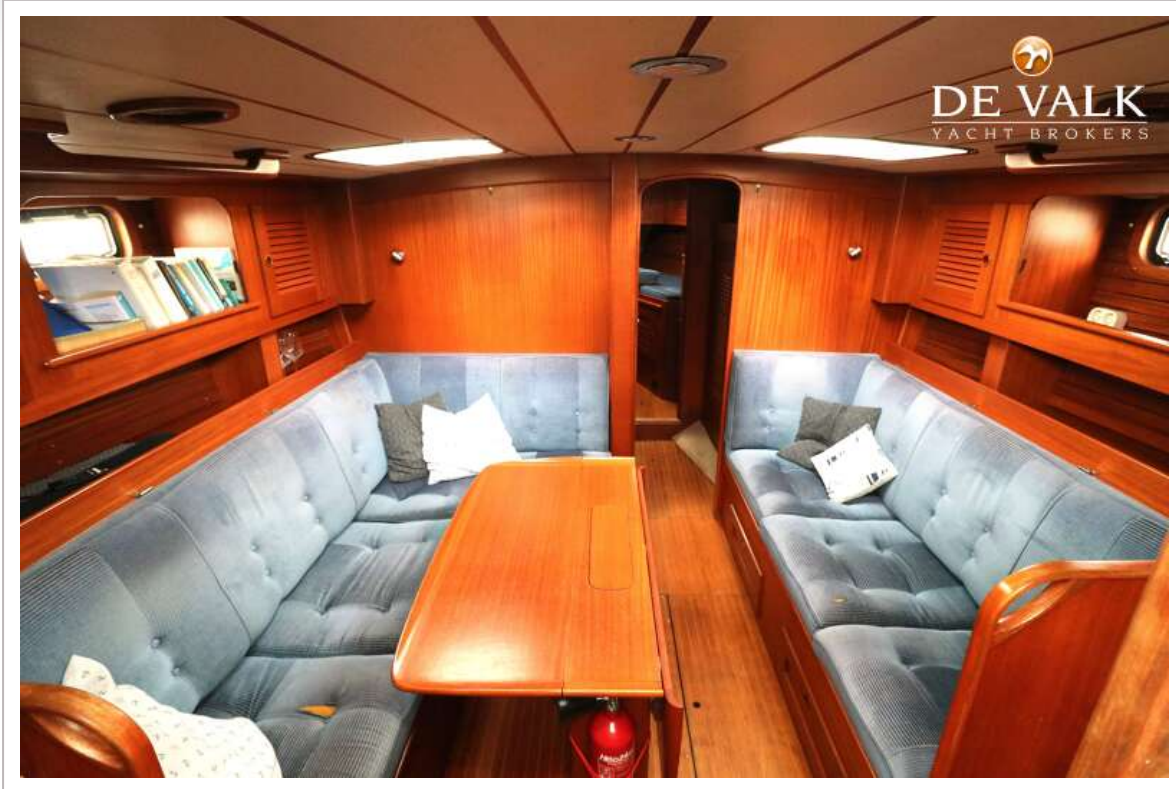
# HALLBERG RASSY 42 E



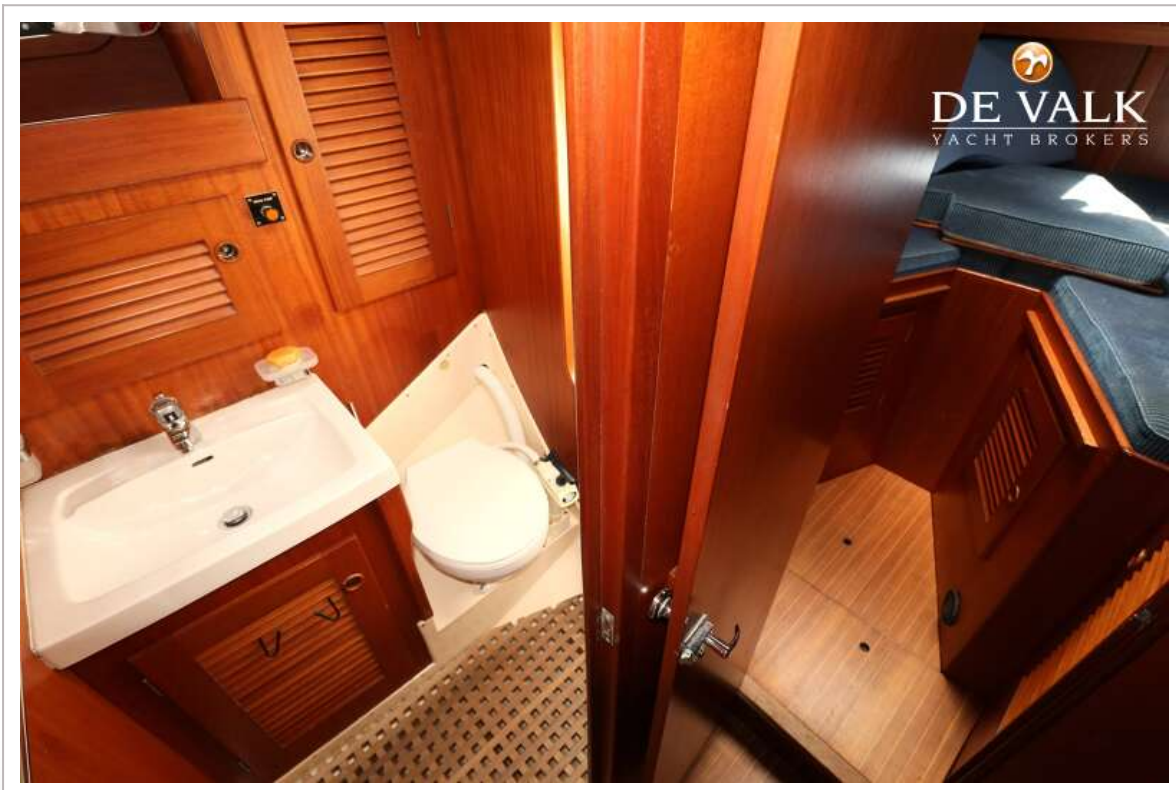
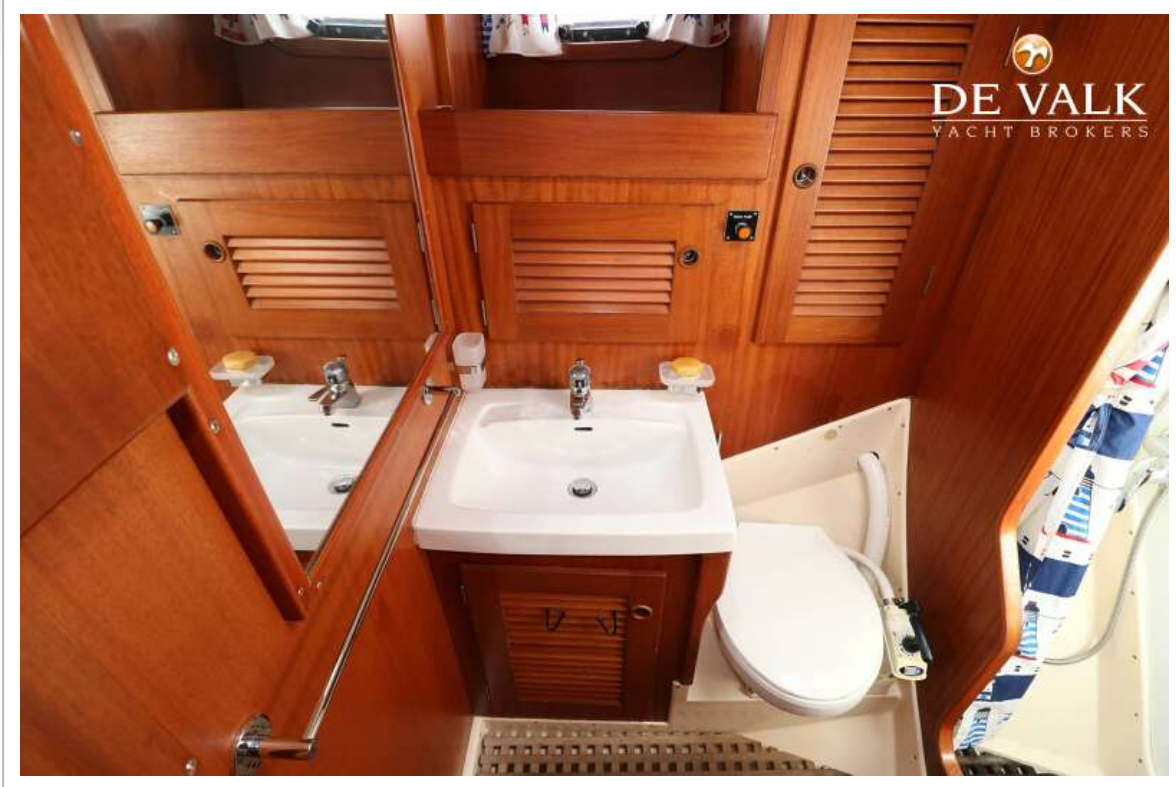
# HALLBERG RASSY 42 E



# HALLBERG RASSY 42 E



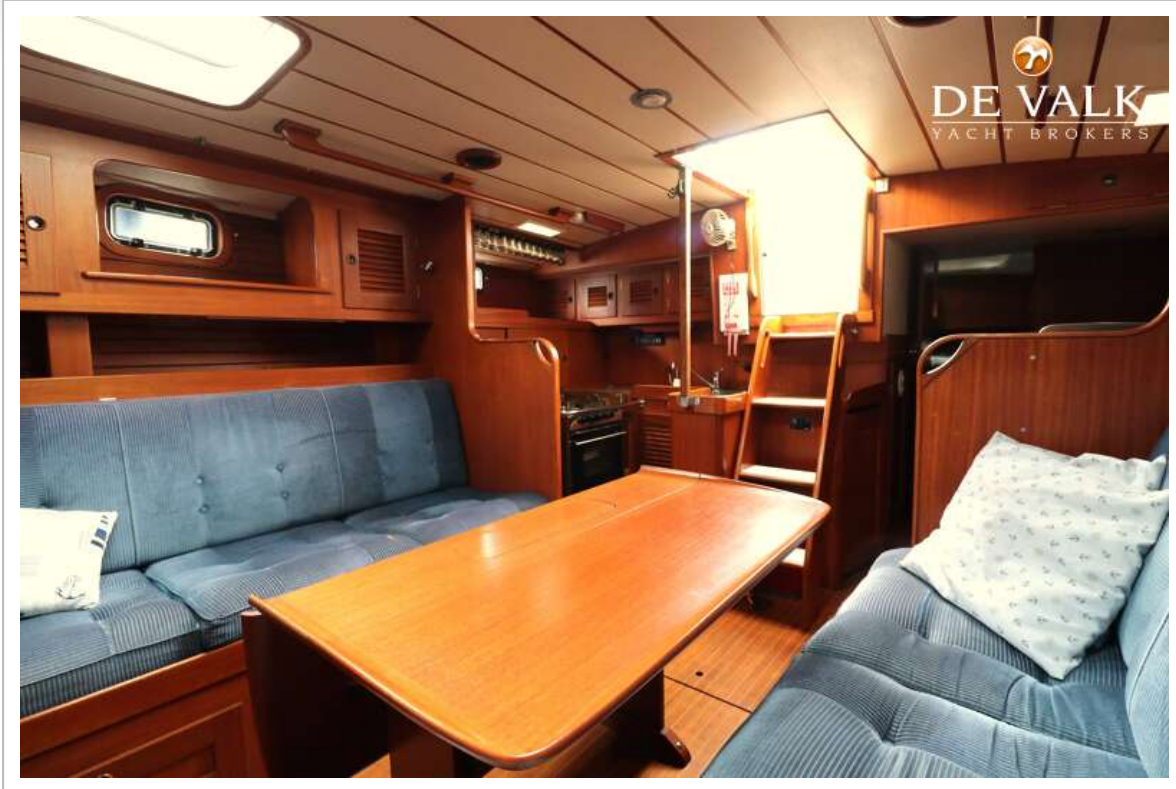
# HALLBERG RASSY 42 E



# HALLBERG RASSY 42 E



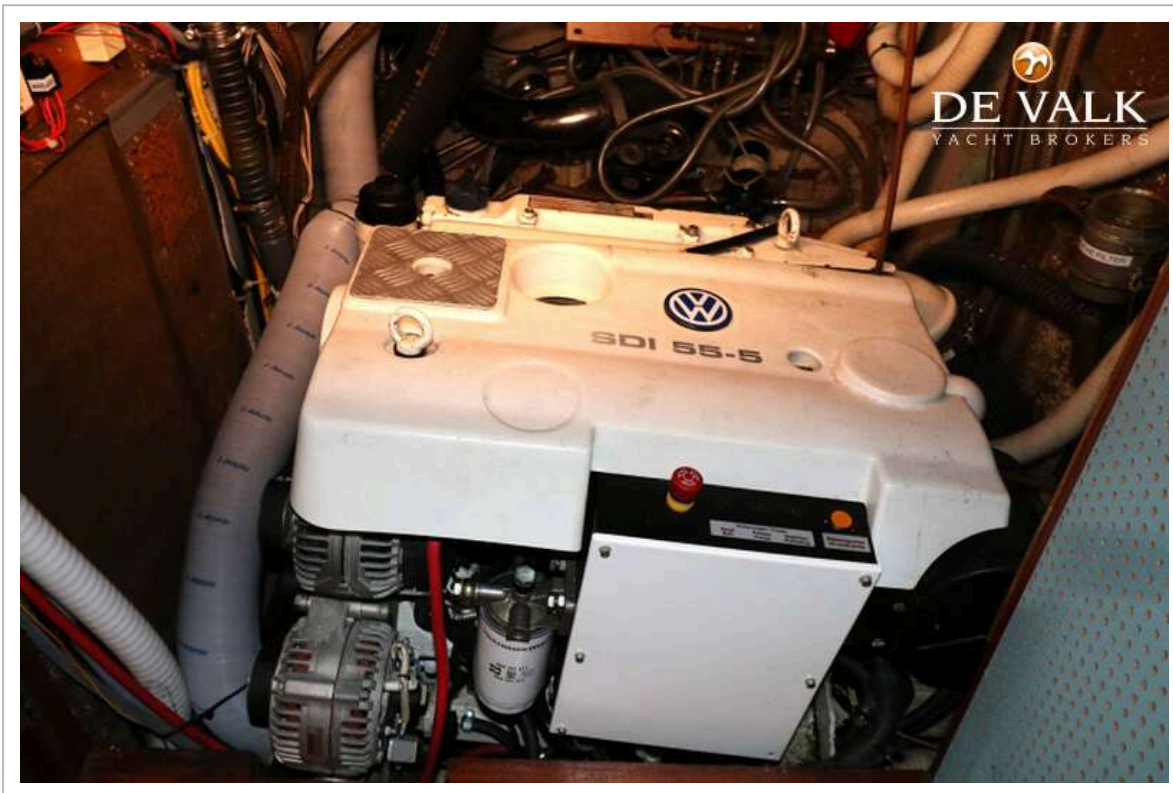
# HALLBERG RASSY 42 E



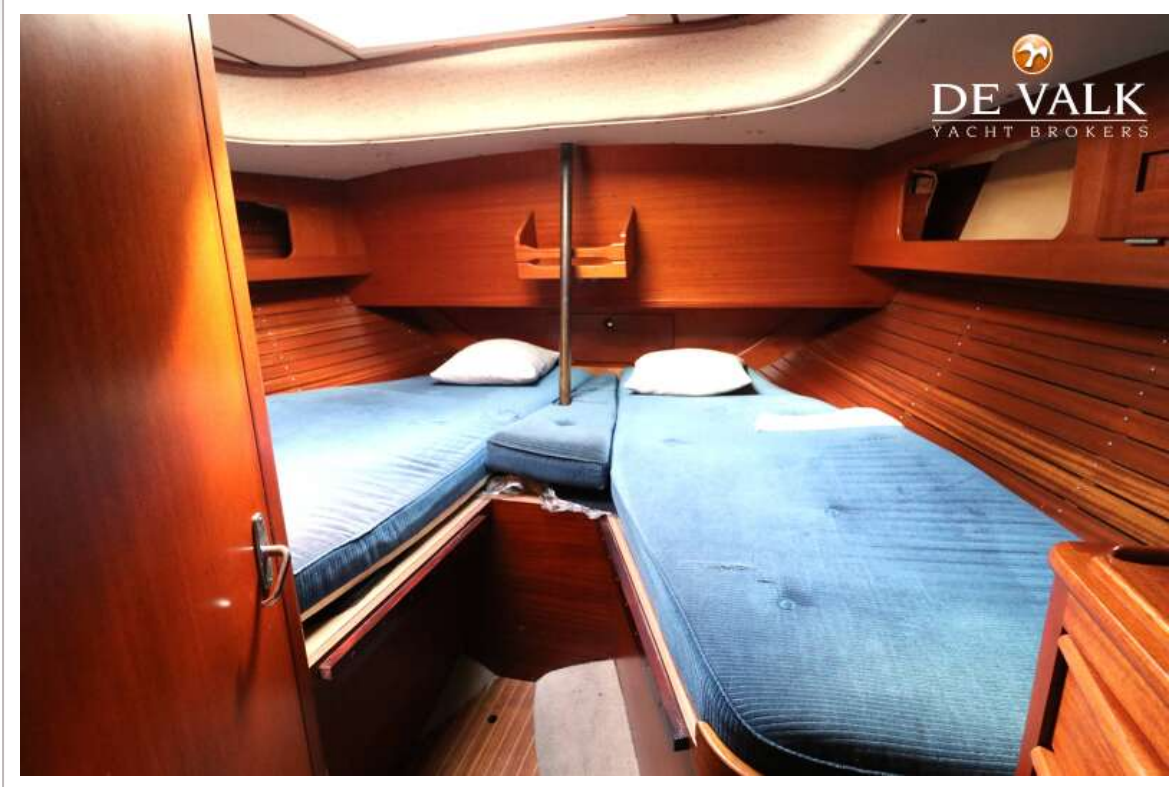
# HALLBERG RASSY 42 E



# HALLBERG RASSY 42 E



# HALLBERG RASSY 42 E



# HALLBERG RASSY 42 E

