



DE VALK  
YACHT BROKERS



## VAN DER HEIJDEN ELEGANCE 1500



DE VALK  
YACHT BROKERS

# VAN DER HEIJDEN ELEGANCE 1500

## BROKER'S COMMENTS

Step aboard this Van der Heijden Elegance 1500 and be amazed by the space and comfort. Perfectly suited for living on board thanks to the central heating, air conditioning and double glazing. A large owner's cabin aft and a guest cabin forward, both with their own en suite bathroom. Thanks to the enclosed wheelhouse, you can continue sailing even in bad weather. Make an appointment soon to view this Van der Heijden Elegance 1500!

*Nick Lanting*

## SPECIFICATIONS

<b>Dimensions</b>	14.95 x 4.50 x 1.30 (m)	<b>Builder</b>	Van der Heijden Yachts
<b>Built</b>	2000	<b>Cabins</b>	2
<b>Material</b>	Steel	<b>Berths</b>	5
<b>Engine(s)</b>	1 x Vetus Deutz DTA67672E diesel	<b>Hp/Kw</b>	286.00 (hp), 210.50 (kw)
<b>Asking price</b>	€ 159.000 (VAT Paid)	<b>Lying</b>	The Netherlands

## CONTACT

<b>Sales office</b>	De Valk Thuishaven	<b>Telephone</b>	+31 35 5829042
<b>Address</b>	Marinaweg 8 (postal address) 1361 AC Almere NL	<b>E-mail</b>	thuishaven@devalk.nl

## DISCLAIMER

These particulars are given in good faith as supplied but cannot be guaranteed.



## GENERAL

<b>Model</b>	VAN DER HEIJDEN ELEGANCE 1500
<b>Type</b>	motor yacht
<b>LOA (m)</b>	14,95
<b>Beam (m)</b>	4,50
<b>Draft (m)</b>	1,30
<b>Air draft (m)</b>	3,80
<b>Headroom (m)</b>	1,98
<b>Year built</b>	2000
<b>Launched</b>	2001
<b>Builder</b>	Van der Heijden Yachts
<b>Country</b>	The Netherlands
<b>CE norm</b>	B
<b>Hull material</b>	steel
<b>Hull colour</b>	white
<b>Hull shape</b>	hard chine
<b>Keel type</b>	box keel
<b>Superstructure material</b>	steel
<b>Rubbing strake</b>	stainless steel
<b>Deck material</b>	steel
<b>Deck finish</b>	teak
<b>Superstructure deck finish</b>	paint
<b>Cockpit deck finish</b>	teak
<b>Antifouling (year)</b>	Unknown
<b>Window frame</b>	aluminium
<b>Window material</b>	double glazing
<b>Deckhatch</b>	Forward cabin
<b>Portholes</b>	aluminium
<b>Fuel tank (litre)</b>	steel 1200
<b>Level indicator (fuel tank)</b>	yes
<b>Freshwater tank (litre)</b>	stainless steel 1000



<b>Level indicator (freshwater)</b>	yes
<b>Blackwater tank (litre)</b>	polyethylene 372
<b>Wheel steering</b>	hydraulic
<b>Outside helm position</b>	hydraulic
<b>More info on hull</b>	Date of last polish and wax is unknown
<b>More info on paintwork</b>	Date of last paintjob is unknown
<b>Extra info</b>	Damaged woodwork in window frame corners, needs attention.

## ACCOMMODATION

<b>Cabins</b>	2
<b>Berths</b>	5
<b>Interior</b>	teak
<b>Floor</b>	carpet
<b>Aft deck</b>	yes
<b>Pilot house</b>	Headroom 1,88m
<b>Saloon</b>	yes
<b>Headroom saloon (m)</b>	1,98
<b>Heating</b>	central heating Kabola
<b>Air-conditioning</b>	single cycle airco Cruisair, in aft cabin only
<b>Aft Cabin</b>	yes
<b>Dinette</b>	yes
<b>Opening door to aft deck</b>	yes
<b>Galley</b>	yes
<b>Countertop</b>	yes
<b>Sink</b>	yes
<b>Cooker</b>	ceramic 4-burner
<b>Microwave/oven combi</b>	yes
<b>Fridge</b>	In galley and in pilothouse
<b>Hot water system</b>	220V + engine
<b>Water pressure system</b>	electrical
<b>Owners cabin</b>	French bed Aft, headroom 1.90m



<b>Bed length (m)</b>	2,00 x 1,50
<b>Wardrobe</b>	hanging/drawers/shelves
<b>Bathroom</b>	en suite Headroom 1,86m
<b>Toilet</b>	In bathroom
<b>Toilet system</b>	electric
<b>Wash basin</b>	in the bathroom
<b>Shower</b>	In bathroom, headroom 1,88m
<b>Extra info</b>	yes
<b>Guest cabin 1</b>	v-bed Forward, headroom 1,92m
<b>Bed length (m)</b>	1,90 x 0,80 (2x)
<b>Wardrobe</b>	hanging and shelves
<b>Bathroom</b>	en suite Headroom 1,92m
<b>Toilet</b>	In bathroom
<b>Toilet system</b>	electric
<b>Wash basin</b>	in the bathroom
<b>Shower</b>	In bathroom
<b>Washing machine</b>	Bosch, in utilityroom
<b>Dryer</b>	Whirlpool, in utilityroom

## MACHINERY

<b>No of engines</b>	1
<b>Make</b>	Vetus Deutz
<b>Type</b>	DTA67672E
<b>HP</b>	286
<b>kW</b>	210.50
<b>Fuel</b>	diesel
<b>Year installed</b>	2000
<b>Engine cooling system</b>	freshwater heat exchanger
<b>Drive</b>	shaft
<b>Engine controls</b>	bowden cable
<b>Gearbox</b>	hydraulic



<b>Bowthruster</b>	electric CUPA, with remote control
<b>Sternthruster</b>	electric CUPA, with remote control
<b>Exhaust</b>	watercooled
<b>Thrust bearing</b>	yes
<b>Propeller type</b>	fixed
<b>Propeller shaft material</b>	stainless steel
<b>Shaft lubrication</b>	water
<b>Electric bilge pump</b>	yes
<b>Electrical installation</b>	12 V, 24 V, 230 V
<b>Generator</b>	silent separator Onan MDKAA 8,5 kVA
<b>Batteries</b>	yes
<b>Battery monitor</b>	Victron BMV-600
<b>Battery charger/inverter</b>	Victron Quattro 24/5000/120 with Victron Phoenix Control
<b>Shorepower</b>	with cable

## NAVIGATION

<b>Electric compass</b>	In autopilot
<b>Depth sounder/log</b>	LOGIC Log/Depth
<b>Windset</b>	LOGIC Wind
<b>VHF</b>	Shipmate RS8300
<b>VHF handheld</b>	Cobra Marine MR-H330
<b>Autopilot</b>	LOGIC Pilot
<b>Plotter/GPS</b>	Raymarine C80
<b>Navigation lights</b>	yes

## EQUIPMENT

<b>Fixed windscreen</b>	yes
<b>Cockpit cover</b>	For aft deck
<b>Cockpit cushions</b>	yes
<b>Cockpit table</b>	yes
<b>Cockpit chairs</b>	yes



<b>Bathing platform</b>	yes
<b>Boarding ladder</b>	stainless steel
<b>Deck shower</b>	yes
<b>Anchor</b>	30 kg
<b>Anchor chain</b>	yes
<b>Windlass</b>	electrical
<b>Dinghy</b>	rigid hull
<b>Outboard</b>	Mercury
<b>Davits</b>	stainless steel
<b>Davits controls</b>	manual
<b>Sea railing</b>	stainless steel
<b>Grab rail (superstructure)</b>	stainless steel
<b>Railing side opening gates</b>	yes
<b>Pulpit</b>	yes
<b>Wiper</b>	3 x
<b>Horn</b>	electric
<b>Fenders</b>	yes
<b>Mooring lines</b>	yes
<b>Radio-cd player</b>	Sony
<b>Cockpit speakers</b>	In pilot house
<b>Clock - barometer</b>	yes



# VAN DER HEIJDEN ELEGANCE 1500



# VAN DER HEIJDEN ELEGANCE 1500



# VAN DER HEIJDEN ELEGANCE 1500



# VAN DER HEIJDEN ELEGANCE 1500



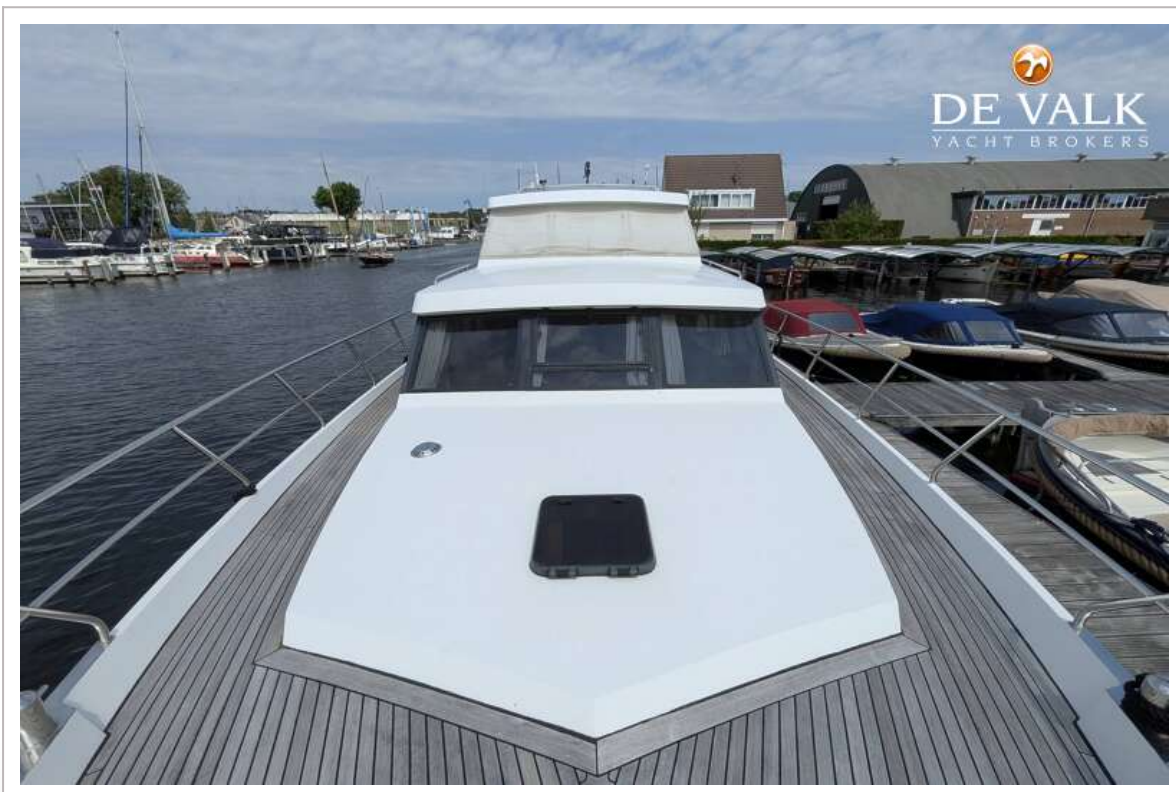
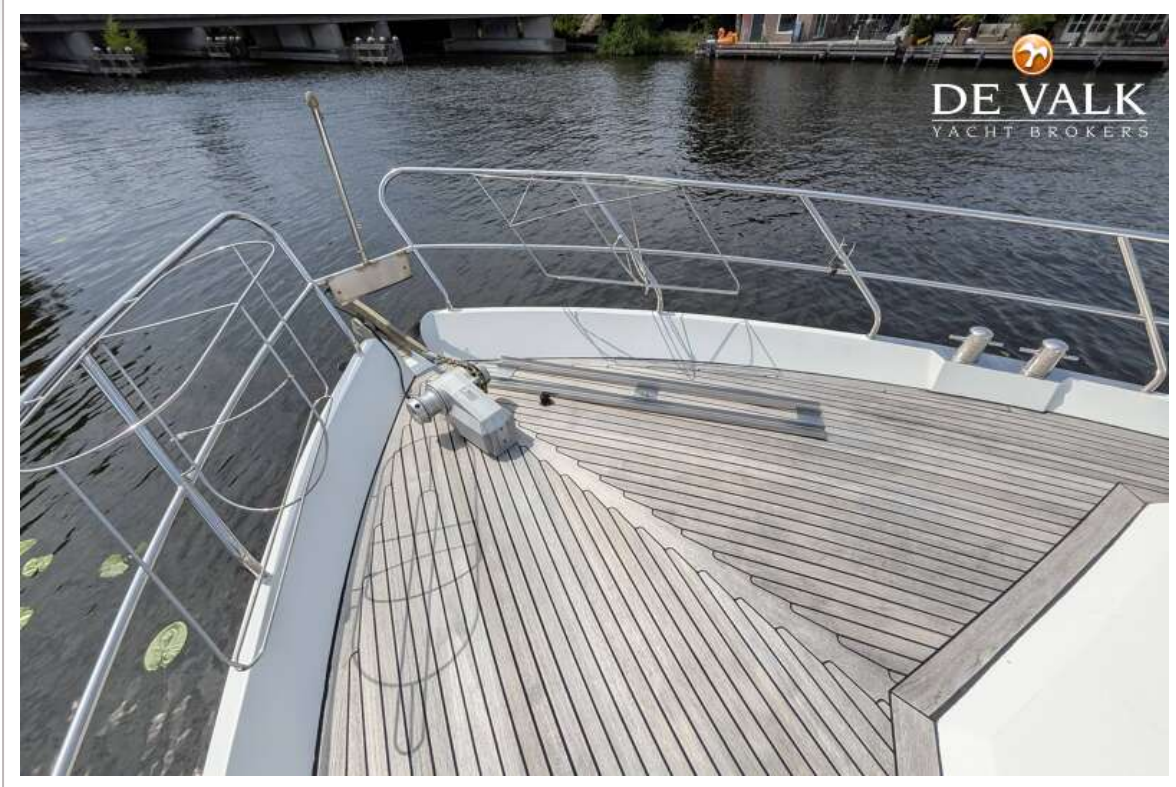
# VAN DER HEIJDEN ELEGANCE 1500



# VAN DER HEIJDEN ELEGANCE 1500



# VAN DER HEIJDEN ELEGANCE 1500



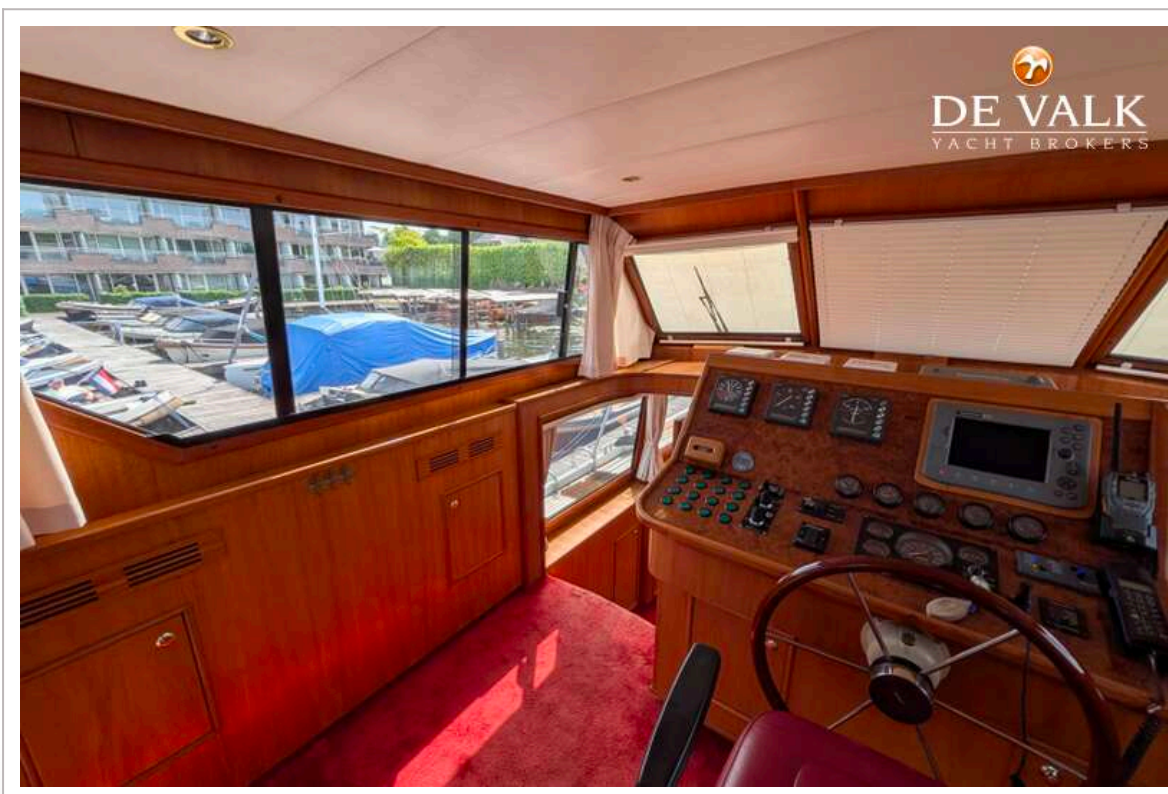
# VAN DER HEIJDEN ELEGANCE 1500



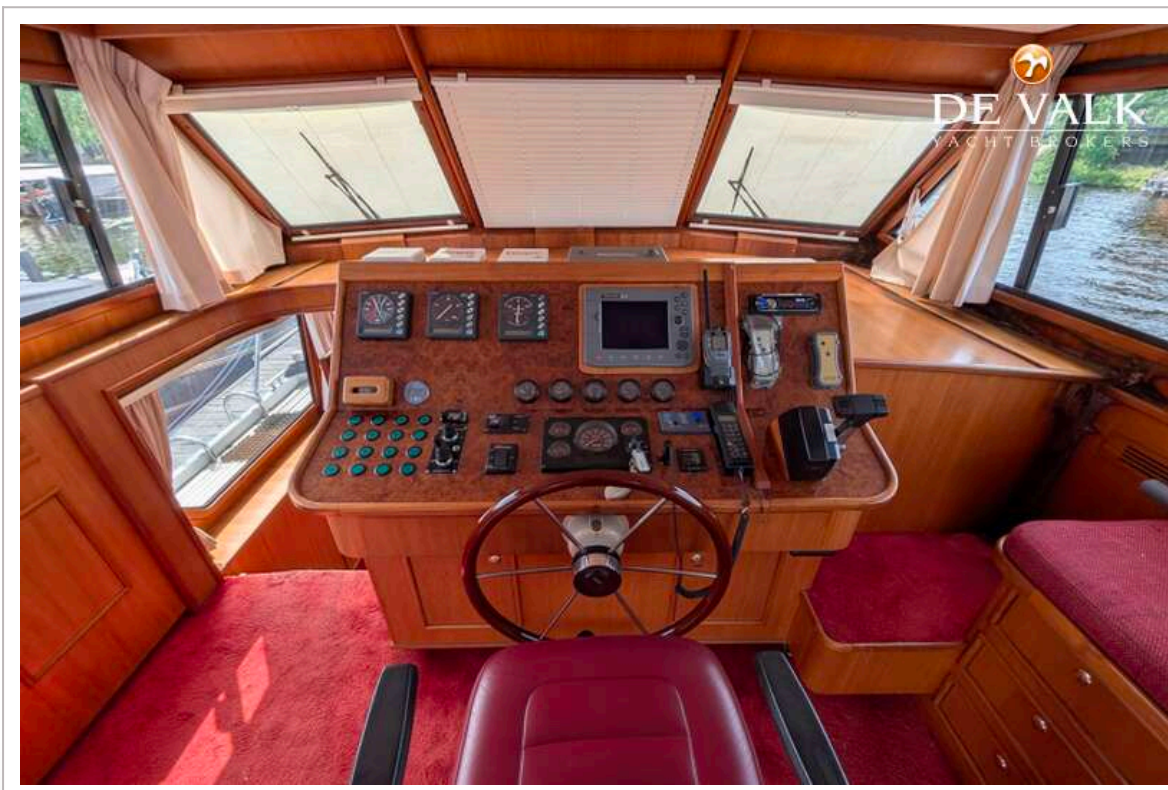
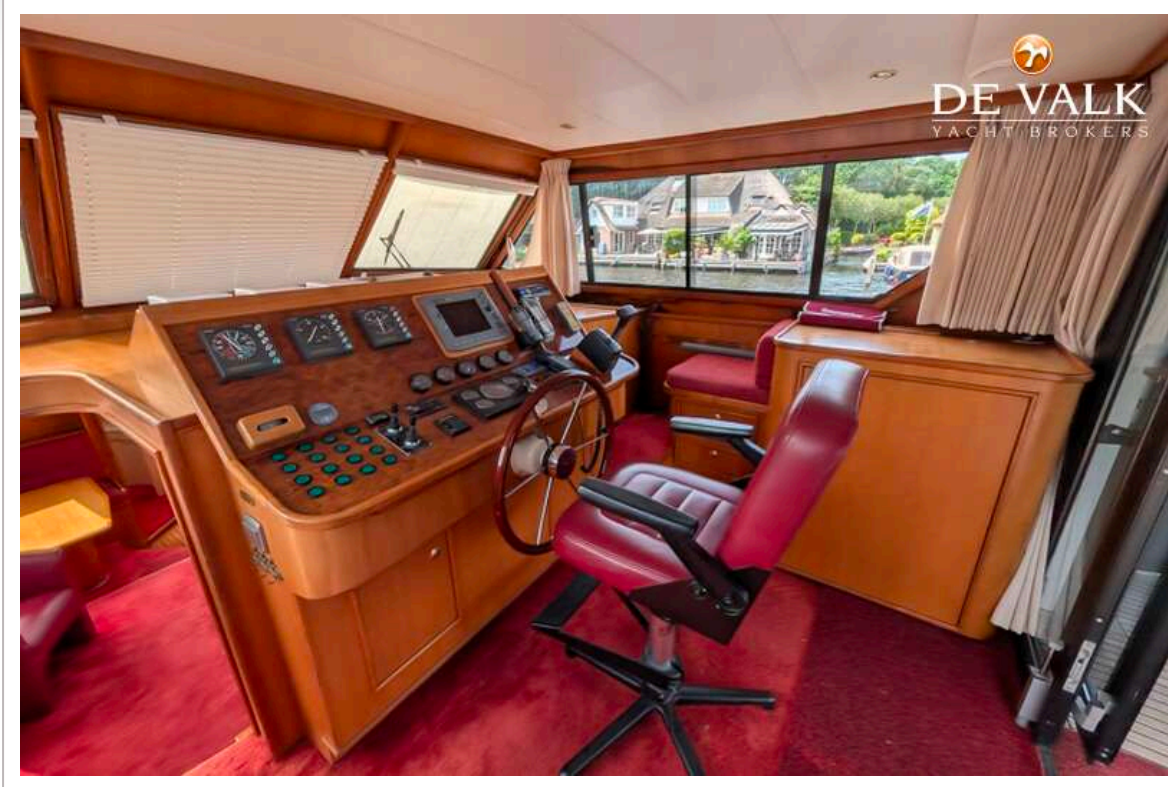
# VAN DER HEIJDEN ELEGANCE 1500



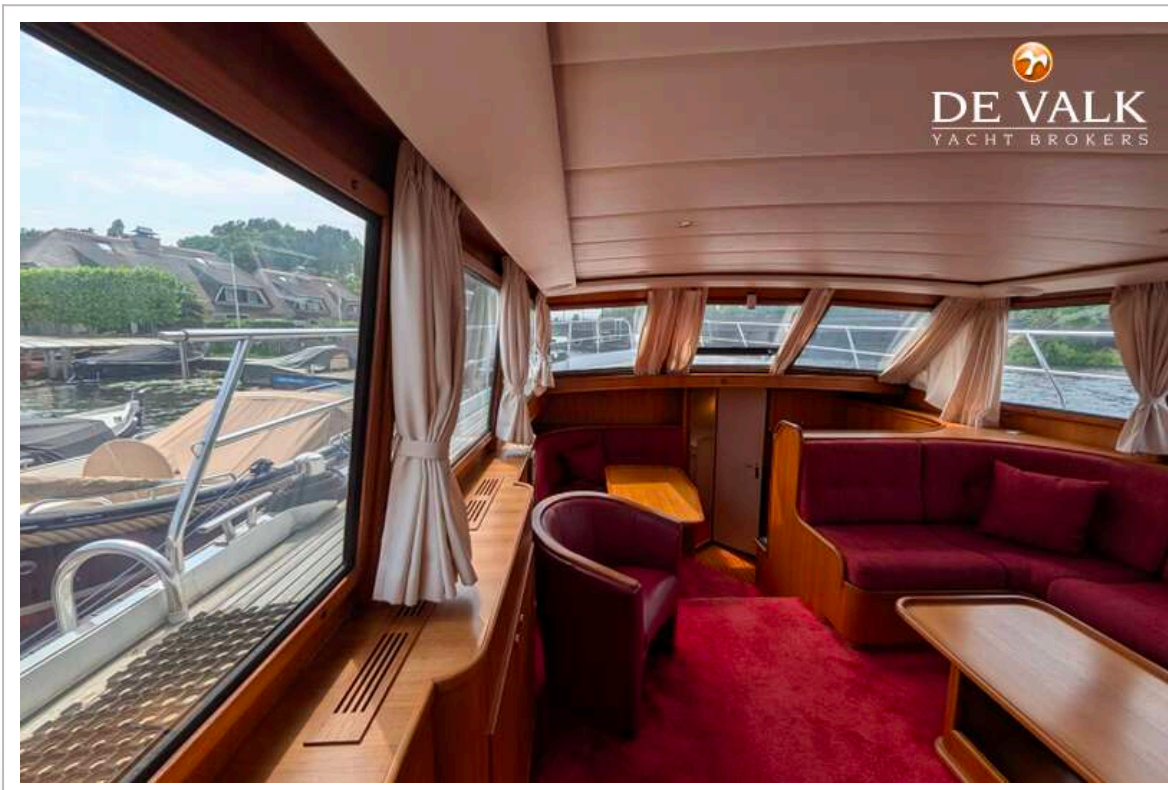
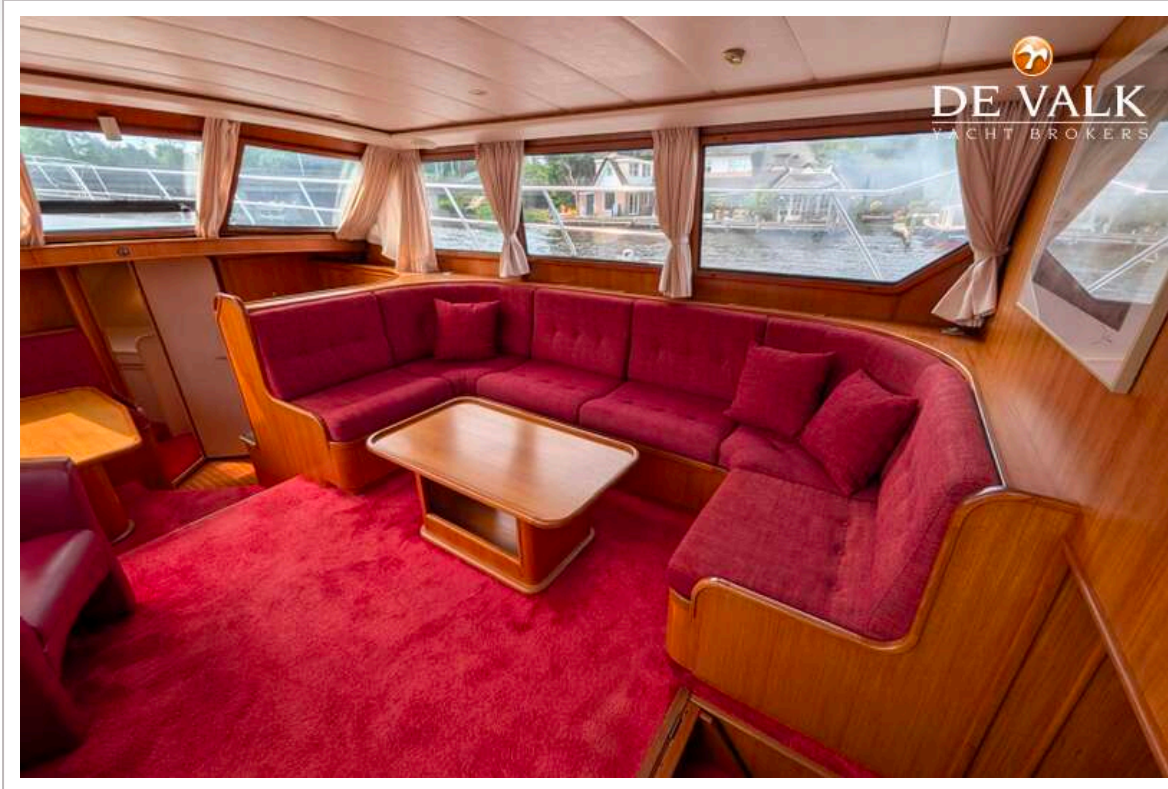
# VAN DER HEIJDEN ELEGANCE 1500



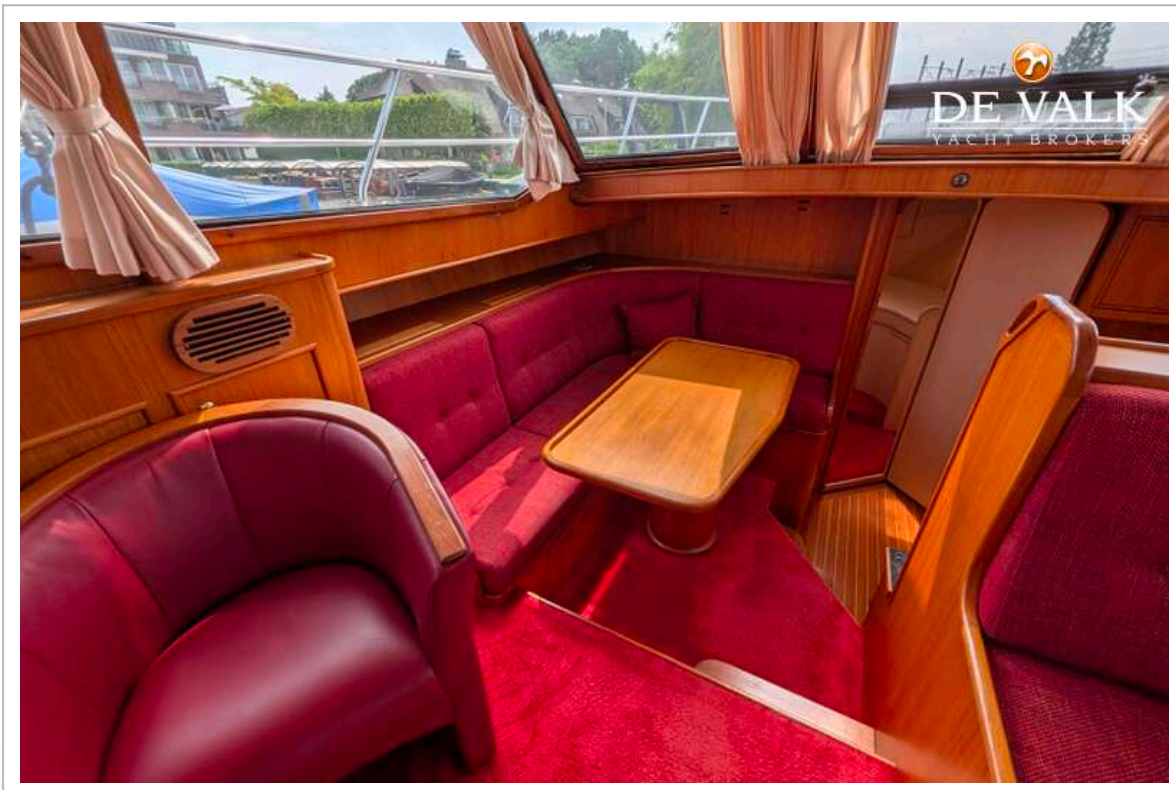
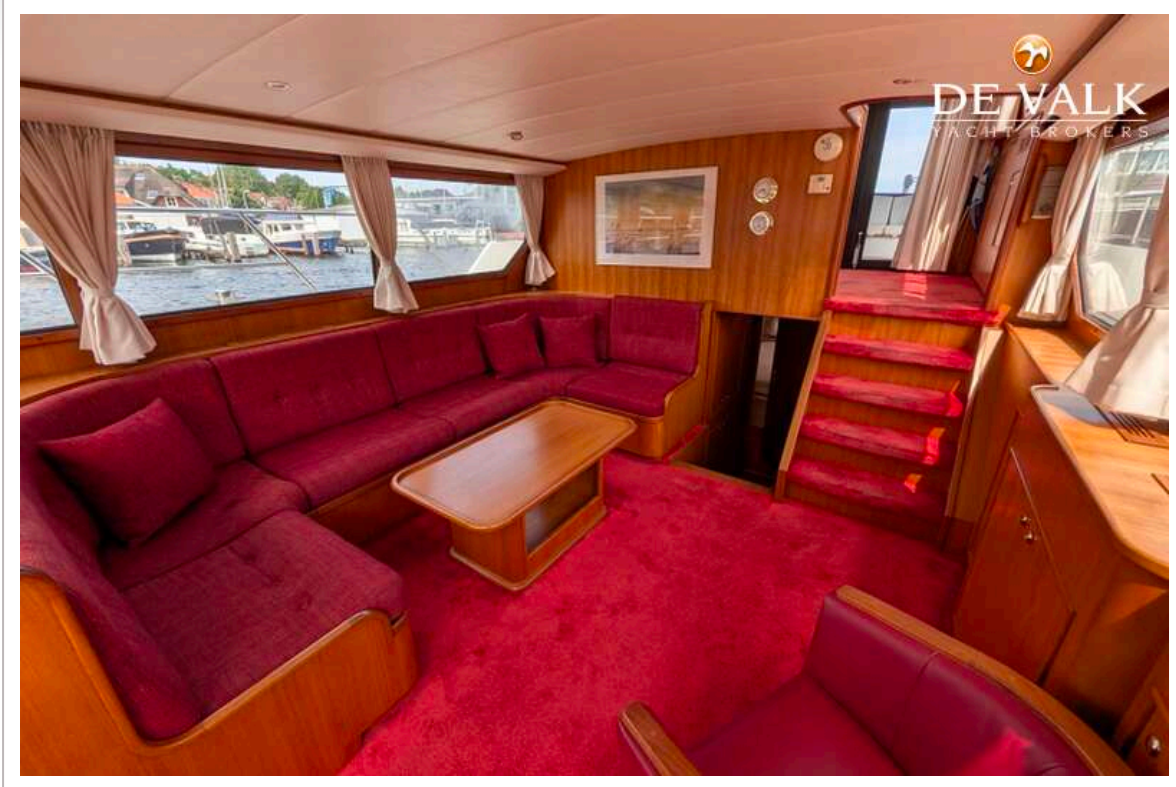
# VAN DER HEIJDEN ELEGANCE 1500



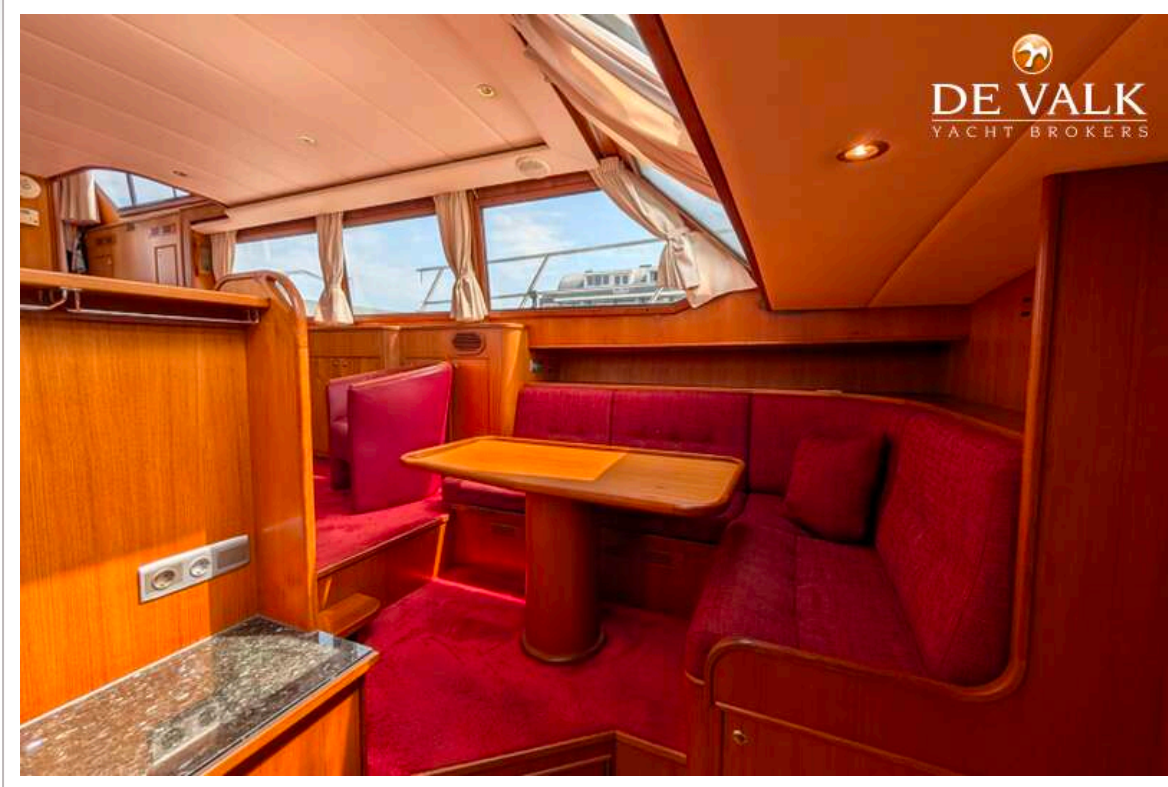
# VAN DER HEIJDEN ELEGANCE 1500



# VAN DER HEIJDEN ELEGANCE 1500



# VAN DER HEIJDEN ELEGANCE 1500

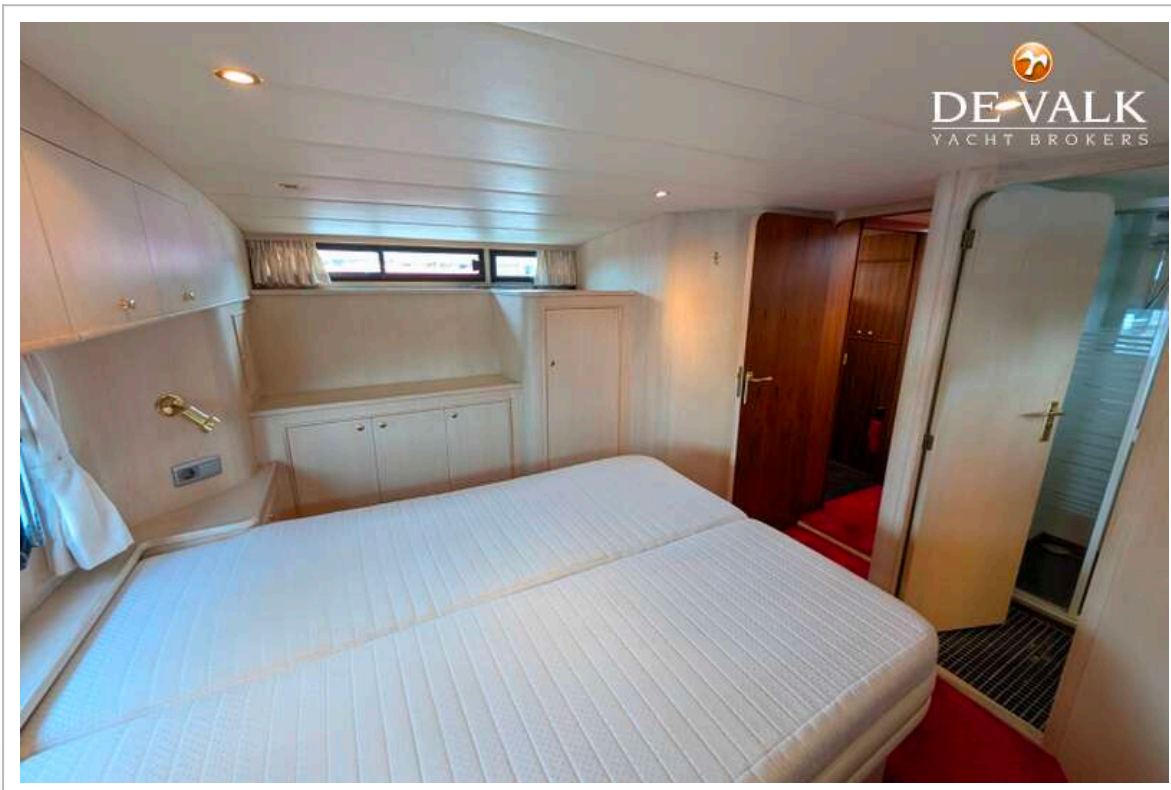


# VAN DER HEIJDEN ELEGANCE 1500

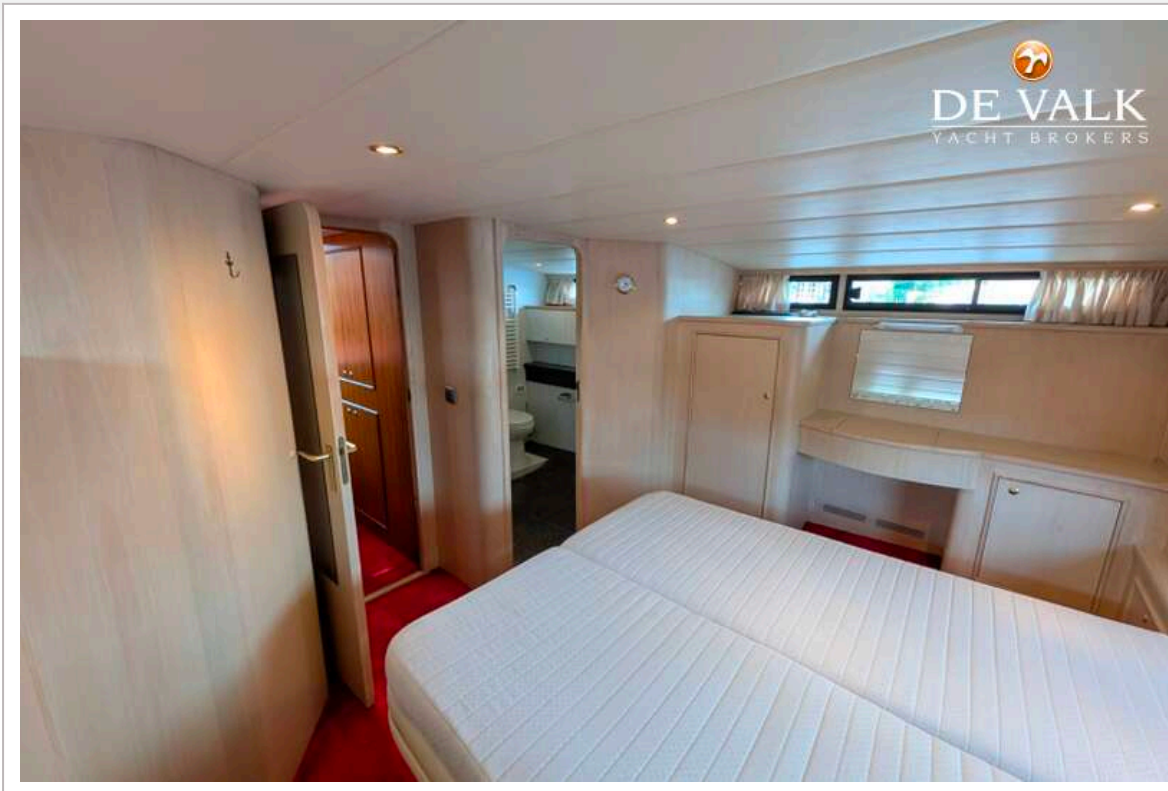




# VAN DER HEIJDEN ELEGANCE 1500



# VAN DER HEIJDEN ELEGANCE 1500





# VAN DER HEIJDEN ELEGANCE 1500

