



DE VALK  
YACHT BROKERS

## X-YACHTS X-46



**DE VALK**  
YACHT BROKERS

# X-YACHTS X-46

## BROKER'S COMMENTS

The X-46 is a fast and well-known comfortable cruiser/club racer. Over the years this owners' version with long galley, has been very well maintained by her owners. She is absolute one of the best ones seen in recent years, featuring stunning, lightly used 2021 laminate sails, up to date, new B&G electronics and a brand new Volvo 2025 engine with only 24 hours of use. The interior, with light-coloured leather upholstery, is in excellent condition. Overall, this X-Yachts X 46 is very well presented, a true joy and an exciting experience for owner, family and friends to sail away.

*Willem Koopmans*

## SPECIFICATIONS

<b>Dimensions</b>	14.01 x 4.14 x 2.40 (m)	<b>Builder</b>	X Yachts
<b>Built</b>	2006	<b>Cabins</b>	3
<b>Material</b>	GRP	<b>Berths</b>	6
<b>Engine(s)</b>	1 x Volvo Penta D2-50F diesel	<b>Hp/Kw</b>	50.00 (hp), 36.80 (kw)
<b>Asking price</b>	€ 249.500 (VAT Paid)	<b>Lying</b>	contact sales office

## CONTACT

<b>Sales office</b>	De Valk Costa Blanca	<b>Telephone</b>	+34 96 50 21 569
<b>Address</b>	Costa Blanca Region 03730 Javea Alicante ES	<b>E-mail</b>	costablanca@devalk.nl

## DISCLAIMER

These particulars are given in good faith as supplied but cannot be guaranteed.



# X-YACHTS X-46

## GENERAL

<b>Model</b>	X-YACHTS X-46
<b>Type</b>	sailing yacht
<b>LOA (m)</b>	14,01
<b>LWL (m)</b>	12,30
<b>Beam (m)</b>	4,14
<b>Draft (m)</b>	2,40
<b>Headroom (m)</b>	2,00
<b>Year built</b>	2006
<b>Launched</b>	2006
<b>Builder</b>	X Yachts
<b>Country</b>	Denmark
<b>Designer</b>	Niels Jeppesen
<b>Displacement (t)</b>	10,9
<b>Ballast (tonnes)</b>	lead 4,5
<b>CE norm</b>	A
<b>Hull material</b>	GRP
<b>Hull colour</b>	white
<b>Hull shape</b>	round-bilged
<b>Keel type</b>	fin keel
<b>Bilge keels</b>	yes
<b>Superstructure material</b>	GRP
<b>Deck material</b>	GRP
<b>Deck finish</b>	teak
<b>Superstructure deck finish</b>	teak
<b>Cockpit deck finish</b>	teak
<b>Antifouling (year)</b>	2025
<b>Window frame</b>	aluminium
<b>Window material</b>	polycarbonate
<b>Deckhatch</b>	yes
<b>Fuel tank (litre)</b>	stainless steel 220



# X-YACHTS X-46

<b>Level indicator (fuel tank)</b>	yes
<b>Freshwater tank (litre)</b>	stainless steel 380, 2x tank
<b>Level indicator (freshwater)</b>	yes
<b>Blackwater tank (litre)</b>	80 (approx.)
<b>Wheel steering</b>	Carbon wheel with cover
<b>Emergency tiller</b>	yes
<b>More info on hull</b>	Hull in good condition, osmosis protected.
<b>More info on paintwork</b>	New antifouling and anodes 2025

## ACCOMMODATION

<b>Cabins</b>	3
<b>Berths</b>	6
<b>Interior</b>	teak
<b>Layout</b>	3 cabin, owner in front
<b>Floor</b>	teak and holly
<b>Saloon</b>	Upholstery: off white leather
<b>Headroom saloon (m)</b>	2
<b>Heating</b>	Eberspacher 5 kW with 5 outlets
<b>Chart table</b>	yes
<b>Aft Cabin</b>	Double
<b>Dinette</b>	yes
<b>Opening door to cockpit</b>	yes
<b>Galley</b>	yes
<b>Countertop</b>	Duropol White
<b>Sink</b>	stainless steel Double
<b>Cooker</b>	calor gas ENO, 2 burner
<b>Oven</b>	yes
<b>Fridge</b>	yes
<b>Hot water system</b>	220V + engine 30 ltr Isotherm boiler, with new thermostat and element (2023)
<b>Water pressure system</b>	Fresh and salt water



# X-YACHTS X-46

Manual and/or foot pump	Salt water
Owners cabin	double bed
Bed length (m)	2
Wardrobe	hanging and shelves
Bathroom	en suite
Toilet	en suite Jabsco
Toilet system	electric
Wash basin	in the bathroom
Shower	en suite
Guest cabin 1	double bed Aft port side
Bed length (m)	2
Wardrobe	hanging and shelves
Bathroom	shared
Toilet	shared Jabsco
Toilet system	manual
Wash basin	in the bathroom
Shower	shared
Guest cabin 2	Aft star board
Bed length (m)	2
Wardrobe	hanging and shelves
Bathroom	shared
Toilet	shared
Toilet system	manual
Wash basin	in the bathroom
Shower	shared
Extra info	All interior lights are LED lights

## MACHINERY

No of engines	1
Make	Volvo Penta
Type	D2-50F



# X-YACHTS X-46

<b>HP</b>	50
<b>kW</b>	36.80
<b>Fuel</b>	diesel
<b>Year installed</b>	2025
<b>Maximum speed (kn)</b>	9
<b>Cruising speed (kn)</b>	7
<b>Consumption (l/hr)</b>	3
<b>Engine hours</b>	24
<b>Engine cooling system</b>	freshwater heat exchanger
<b>Drive</b>	sail-drive
<b>Saildrive seal</b>	Saildrive and saildrive seal both new 2025
<b>Engine controls</b>	bowden cable
<b>Gearbox</b>	mechanical
<b>Propeller type</b>	folding
<b>Propeller blades</b>	2
<b>Manual bilge pump</b>	yes
<b>Electric bilge pump</b>	yes
<b>Electrical installation</b>	12/228
<b>Batteries</b>	3x, all new August 2022
<b>Start battery</b>	New 2022
<b>Service battery</b>	New 2022
<b>Battery monitor</b>	yes
<b>Battery charger</b>	WP-BC Supreme 60 Amp
<b>Shorepower</b>	with cable

## NAVIGATION

<b>Compass</b>	Suunto
<b>Electric compass</b>	On autopilot
<b>Multi control display</b>	3x B&G Triton
<b>Depth sounder/log</b>	B&G Airmar sensor
<b>Windset</b>	B&G new 2024



# X-YACHTS X-46

VHF	B&G V 100 with external speaker
VHF handheld	yes
Autopilot	B&G Pilot Nac 3 computer
Rudder angle indicator	On display
Radar	B&G Broadband 4G
GPS	yes
Plotter	yes
Radar/plotter	yes
Radar/GPS/plotter	B&G Zeus 35-12 inch and 7 inch outside
AIS transponder	B&G
Navigation lights	yes

## EQUIPMENT

Sprayhood	yes
Bimini	New 2024
Bathing platform	With teak
Boarding ladder	stainless steel
Gangway	Stainless steal with teak
Deck shower	Warm/cold
Anchor	Bruce Stainless steel
Anchor chain	45 mtr
Windlass	Lofrans 1500, also to be operated from cockpit
Dinghy	Zodiac, 3m
Outboard	yes
Sea railing	yes
Life raft	valise (or bag)
Life raft (pers)	8
Last life raft survey	Out of service date (Febr. 2023), but can stay on board
Fenders	yes
Mooring lines	yes
Radio-cd player	yes



Cockpit speakers	Bose
Speakers in salon	In galley
Clock - barometer	yes
Fire extinguisher	yes
Latest extinguisher survey	Needs service/check

## RIGGING

Rigging	fractional 7/8
Standing rigging	Rod
Brand mast	Seldén
Material mast	aluminium
Spreaders	3
Keel stepped mast	yes
Mainsail cover	yes
Battcars	yes
Fully battened mainsail	Evolution, laminated, new 2021
Genoa	Evolution, laminated 2021
Genoa I	Light weather
Genoa furler	yes
Code Zero	Almost new
Gennaker	North Sails with cover
Spinnaker	North Sails almost new
Reefing System	quick-one-line-reefing
Backstay adjuster	hydraulic
Boomvang	gasspring Selden
Primary sheet winch	Lewmar 62 ST
Secondary sheet winch	yes
Halyard winches	Lewmar 46 ST, one electric
Spinnaker winch	Lewmar 46 ST
Winchcovers	yes
Spi-pole	Carbon



## Extra info

Sails are almost in as new condition



# X-YACHTS X-46



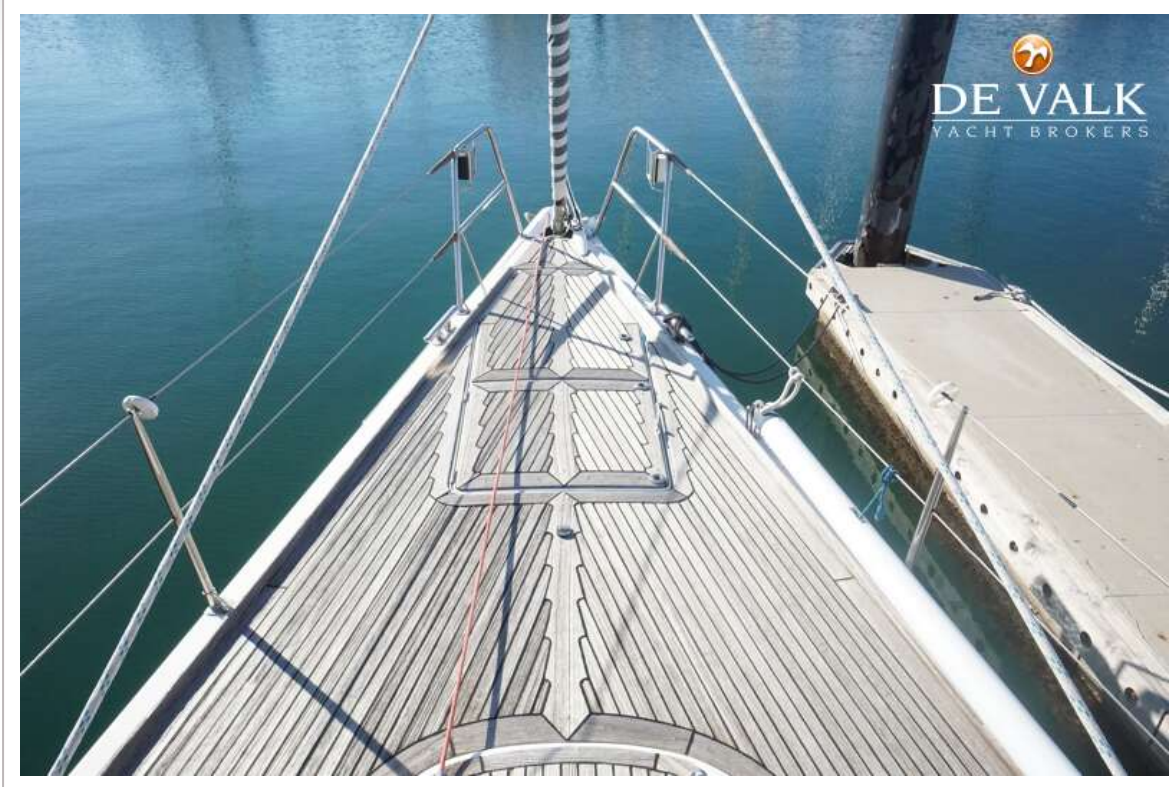
# X-YACHTS X-46



# X-YACHTS X-46



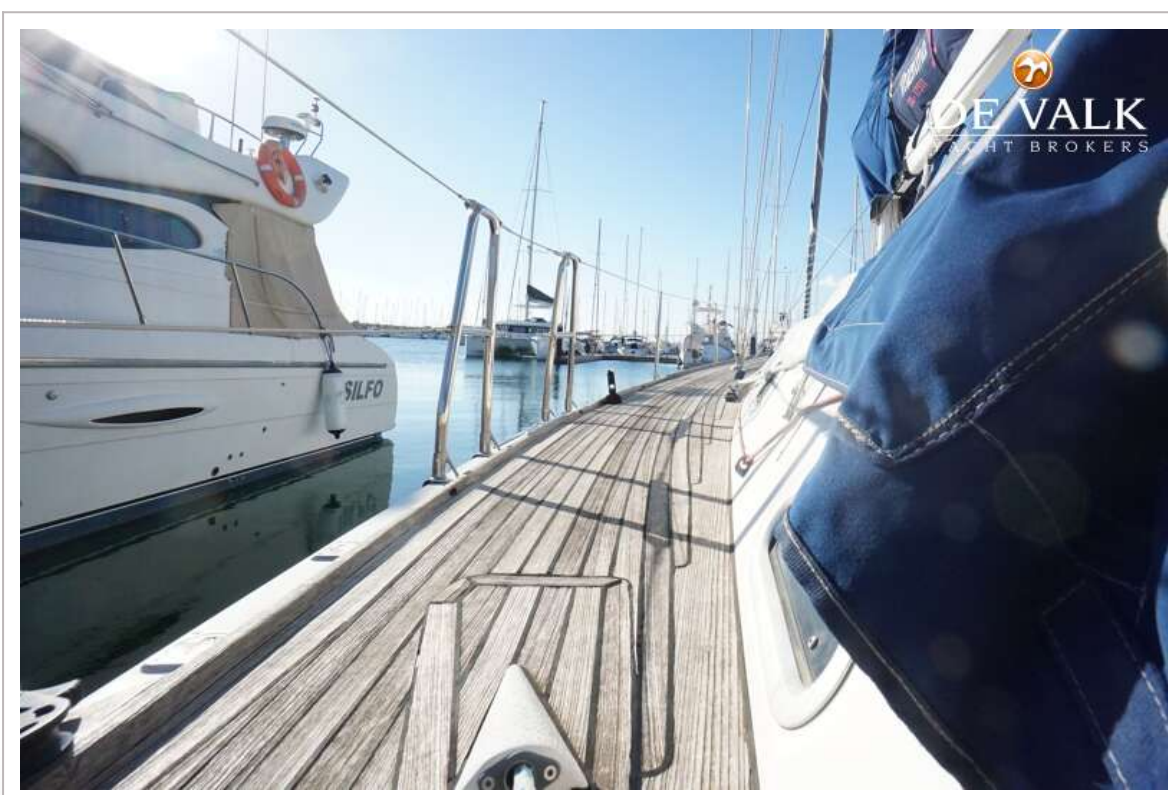
# X-YACHTS X-46



# X-YACHTS X-46



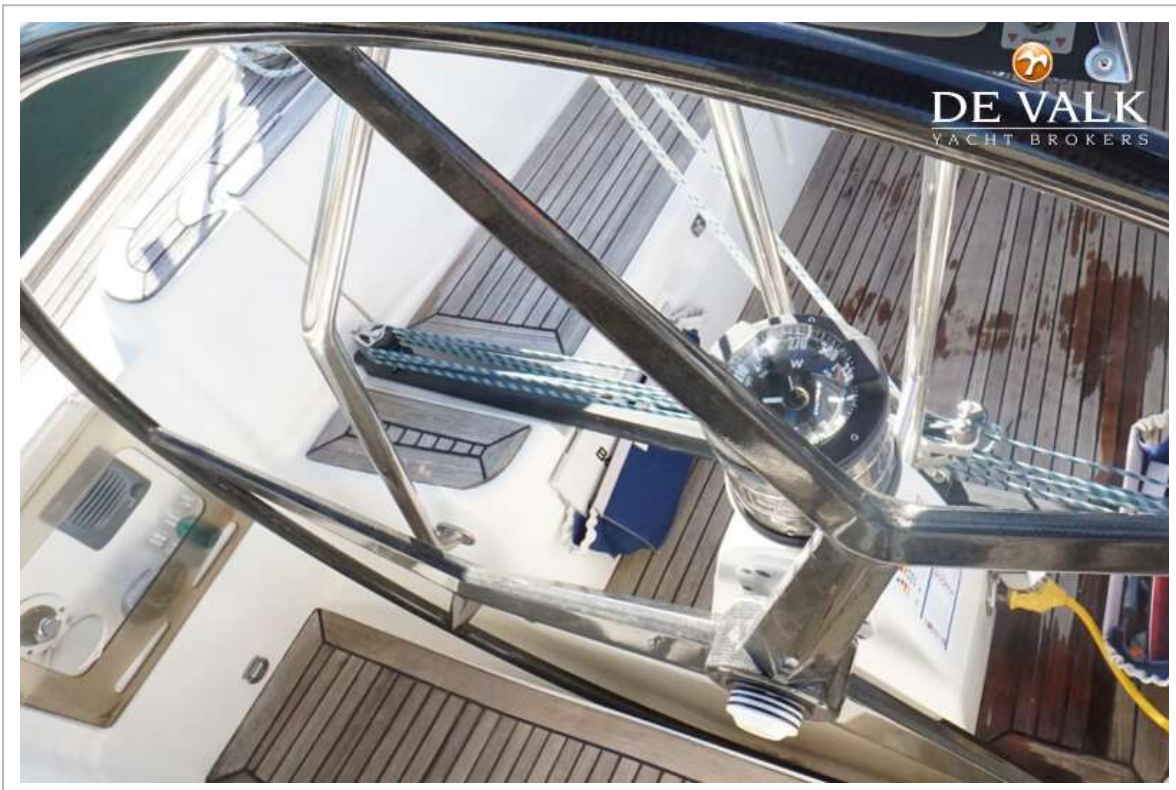
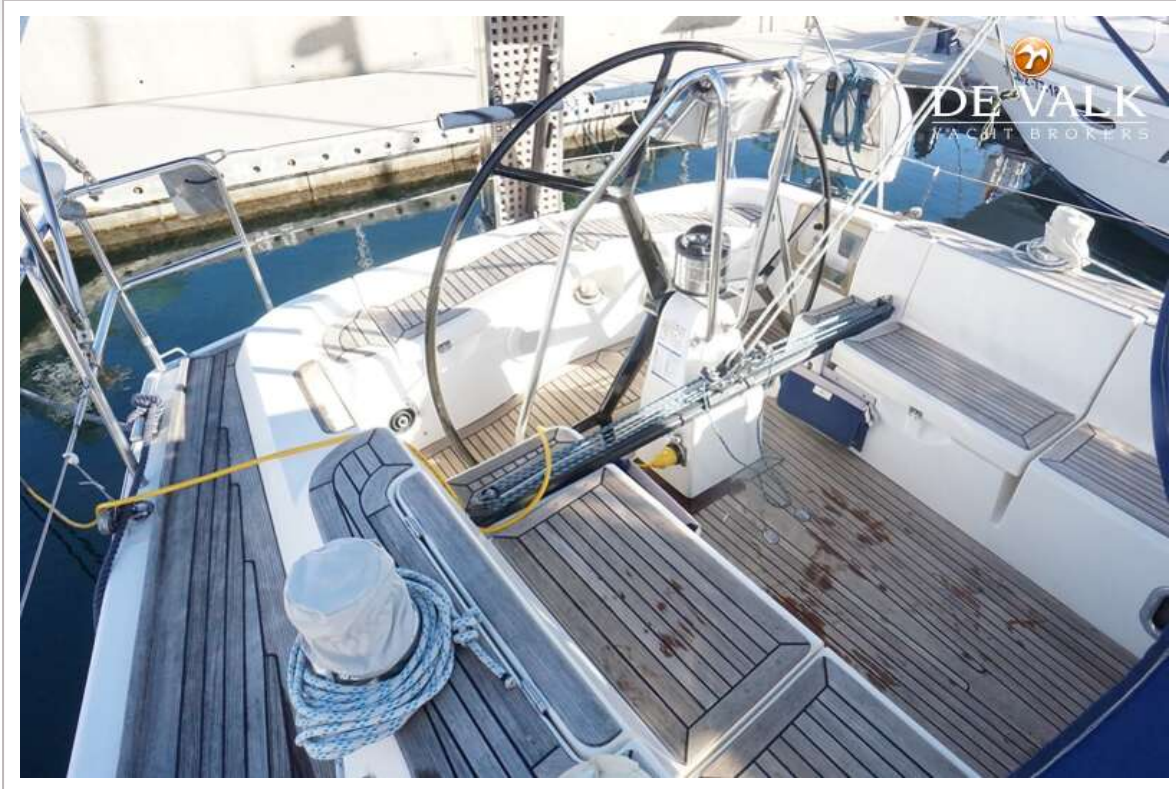
# X-YACHTS X-46



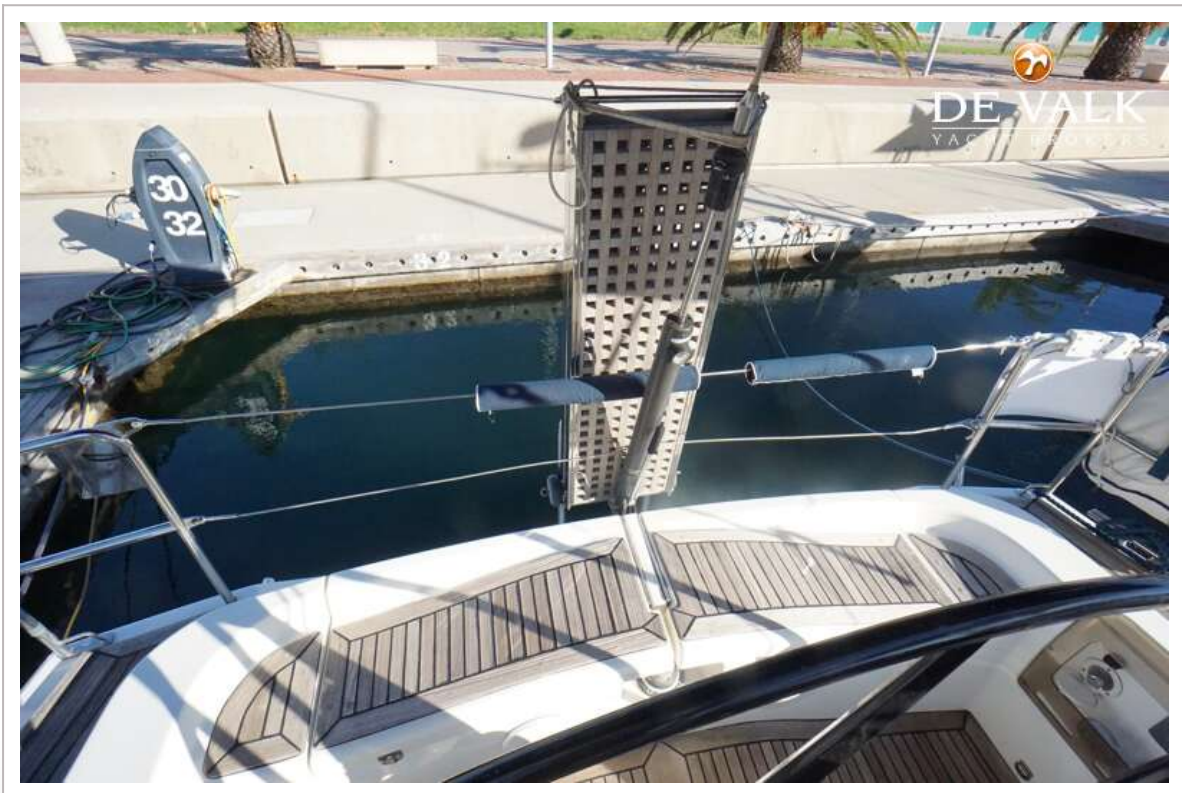
# X-YACHTS X-46



# X-YACHTS X-46



# X-YACHTS X-46



# X-YACHTS X-46



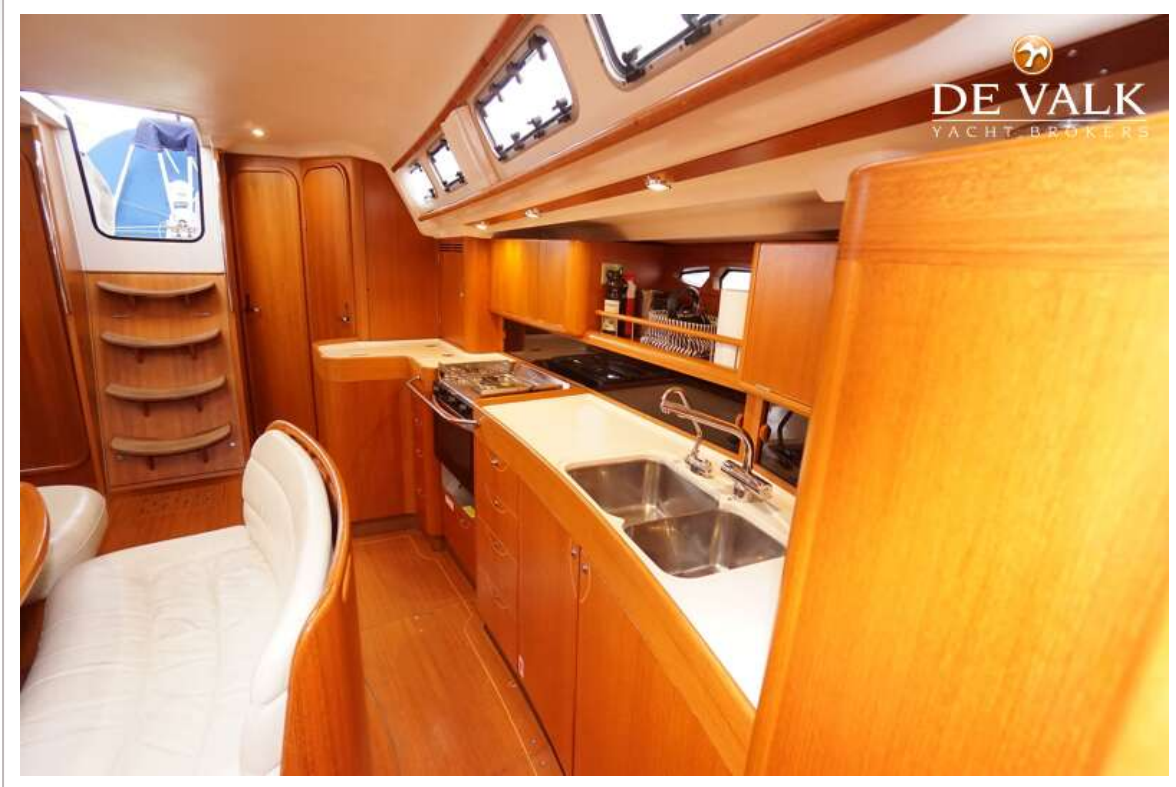
# X-YACHTS X-46



# X-YACHTS X-46



# X-YACHTS X-46



# X-YACHTS X-46



# X-YACHTS X-46



# X-YACHTS X-46



# X-YACHTS X-46



# X-YACHTS X-46



# X-YACHTS X-46

