



DE VALK
YACHT BROKERS



BORNRIF 33



DE VALK
YACHT BROKERS

BROKER'S COMMENTS

This exceptionally well-maintained, owner-built Bornrif 33 is presented in very neat condition and is comprehensively equipped for comfortable, worry-free sailing. The Bornrif 33 is renowned for her excellent sailing performance, strong stability, and pleasant handling. Thanks to her ability to dry out, she is perfectly suited for coastal waters and tidal areas. The onboard systems are well cared for and reliable, including a bow thruster for easy manoeuvring. Ideal for both relaxed cruising and longer voyages, a complete and appealing yacht ready for new adventures.

Johan Schootstra

SPECIFICATIONS

Dimensions	11.90 x 3.75 x 1,15 / 2.25 (m)	Builder	Eigenbouw
Built	2016	Cabins	2
Material	Steel	Berths	4
Engine(s)	1 x Volvo Penta D2-40 diesel	Hp/Kw	40.00 (hp), 29.44 (kw)
Asking price	€ 149.000 (VAT Paid)	Lying	at sales office

CONTACT

Sales office	De Valk Hindeloopen B.V.	Telephone	+31 514 52 40 00
Address	Oosterstrand 1 8713 JS Hindeloopen NL	E-mail	hindeloopen@devalk.nl

DISCLAIMER

These particulars are given in good faith as supplied but cannot be guaranteed.



GENERAL

Model	BORNRIF 33
Type	sailing yacht
LOA (m)	11,90
LWL (m)	9,45
Beam (m)	3,75
Draft (m)	2,25
Draft min (m)	1,15
Air draft (m)	15,90
Headroom (m)	1,78
Year built	2016
Builder	Eigenbouw
Country	The Netherlands
Designer	Manta Marine Design - Pepijn van Schaik
Displacement (t)	12,5
Ballast (tonnes)	lead 2,8 t
Hull material	steel
Hull colour	blue
Hull thickness (mm)	4 - 6 mm
Hull shape	multi hard chine
Keel type	centreboard electric & manual
Superstructure material	steel
Superstructure (mm)	4 mm
Deck plate thickness (mm)	4 mm
Rubbing strake	stainless steel
Deck material	steel
Deck finish	non-skid paint
Superstructure deck finish	non-skid paint
Cockpit deck finish	yes
Antifouling (year)	04-2026
Window frame	aluminium



Window material	tempered glass
Deckhatch	3 deck hatches and 2 prism glass panels in the saloon.
Portholes	aluminium
Insulation	foam
Fuel tank (litre)	steel 300 ltr.
Level indicator (fuel tank)	yes
Freshwater tank (litre)	epoxy 175 ltr.
Greywater tank (litre)	stainless steel 175 ltr.
Tiller	yes

ACCOMMODATION

Cabins	2
Berths	4
Interior	mahogany
Layout	Saloon with U-shaped seating and a longitudinal bench, navigation area and a spacious galley. Forward cabin with a double bed and an aft cabin with a single bed.
Floor	teak and holly
Open cockpit	yes
Saloon	yes
Headroom saloon (m)	1,78 mtr.
Heating	diesel ducted hot air Webasto AT 5500
Navigation center	yes
Chart table	yes
Aft Cabin	yes
Convertible berth	yes
Galley	yes
Countertop	Duropol
Sink	yes
Cooker	calor gas Force10, two burner
Oven	yes
Fridge	yes



Hot water system	220V + engine
Water pressure system	electrical
Owners cabin	double bed Forward cabin
Bed length (m)	1,85 mtr.
Wardrobe	shelves
Bathroom	shared
Toilet	yes
Toilet system	Dry Toilet / Droogtoilet / Trockentoilet Ecosave
Wash basin	yes
Shower	yes
Guest cabin 1	single bed
Bed length (m)	2 mtr.

MACHINERY

No of engines	1
Make	Volvo Penta
Type	D2-40
HP	40
kW	29.44
Fuel	diesel
Engine hours	1090
Engine cooling system	freshwater heat exchanger
Drive	shaft
Shaft seal	EVO 35 mm – tube 55 mm with (water connection).
Engine controls	bowden cable
Gearbox	mechanical
Bowthruster	yes
Exhaust	watercooled
Thrust bearing	Aquadrive CVB
Propeller type	feathering Max-prop
Propeller blades	3



Propeller shaft material	stainless steel Ø 35mm
Shaft lubrication	water
Manual bilge pump	yes
Electric bilge pump	yes
Electrical installation	12 / 220 volt
Start battery	Optima RedTop 50Ah
Service battery	4
Battery charger	yes
Solar panel	yes
Shorepower	with cable

NAVIGATION

Electric compass	yes
Depth sounder/log	Simrad IS20 Display
Windset	Simrad IS20 Display
VHF	yes
Autopilot	Simrad AP24 control
Rudder angle indicator	yes
Plotter/GPS	Simrad NSE8 Display
AIS transceiver	Class B
Navigation lights	yes

EQUIPMENT

Sprayhood	yes
Cockpit cushions	yes
Cockpit table	yes
Boarding ladder	yes
Anchor	CQR Plough
Anchor chain	yes
Windlass	Lofrans
Capstan	yes



Deck wash	yes
Sea railing	yes
Grab rail (superstructure)	stainless steel
Railing side opening gates	yes
Pushpit	yes
Pulpit	yes
Lifebuoy	yes
Fenders	yes
Mooring lines	yes
Tools	yes
Radio-cd player	Pioneer
Speakers in salon	yes
Clock - barometer	yes

RIGGING

Rigging	sloop-cutter
Standing rigging	wire
Brand mast	Seldén
Material mast	aluminium
Spreaders	2 pair
Mainsail	Zeilmakerij Molenaar Grou
Mainsail cover	New 2026
Fully battened mainsail	yes
Genoa	Zeilmakerij Molenaar Grou
Genoa furler	Seldén Furlex 300 S
Cutter jib	Zeilmakerij Molenaar Grou
Cutter furler	Seldén Furlex 200 S
Reefing System	quick-one-line-reefing
Primary sheet winch	2x Andersen 40ST two speed
Genoa sheetwinches	2x Andersen 40ST two speed
Halyard winches	Andersen 40ST two speed - electric

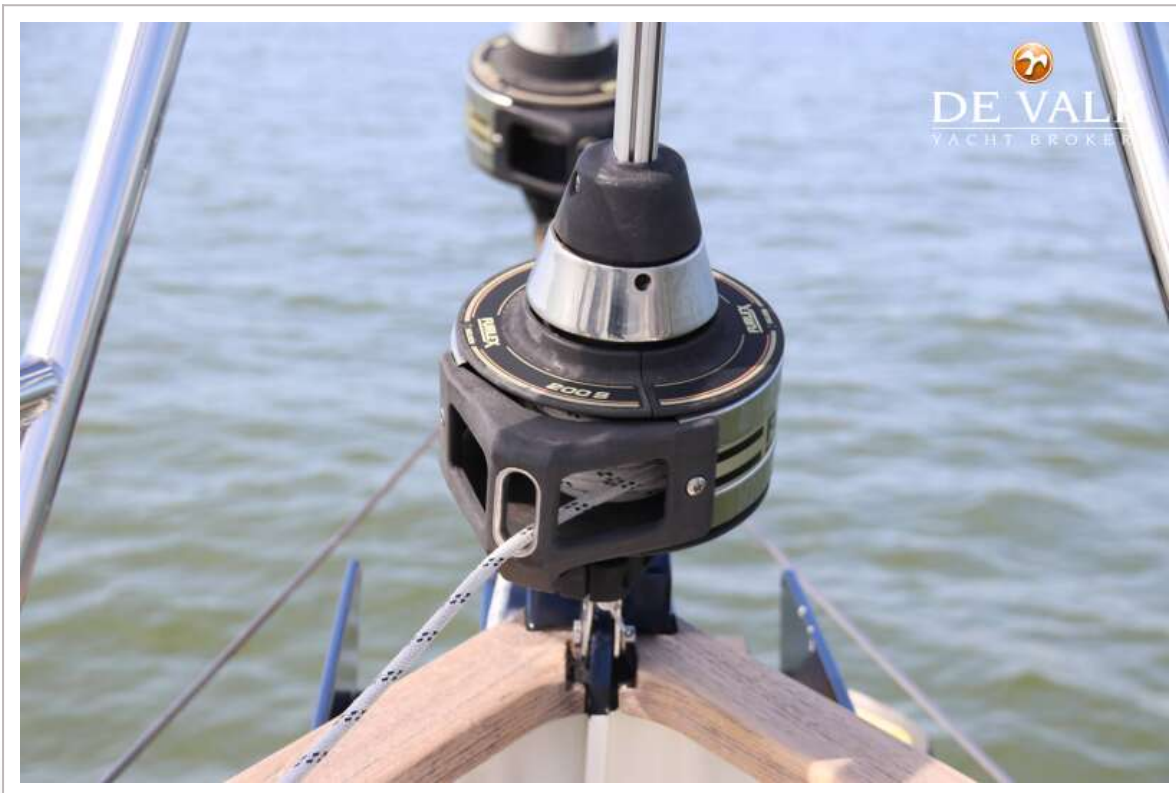






BORNRIF 33











BORNRIF 33



BORNRIF 33



BORNRIF 33

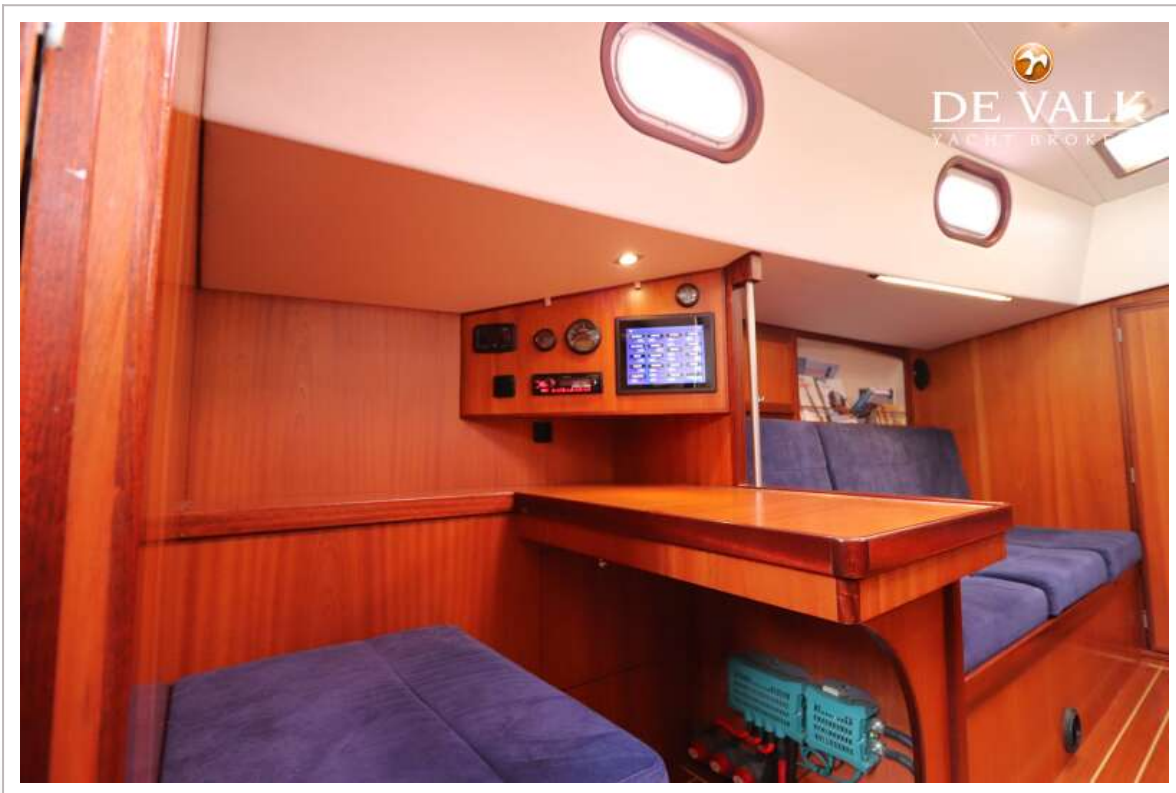


BORNRIF 33



BORNRIF 33

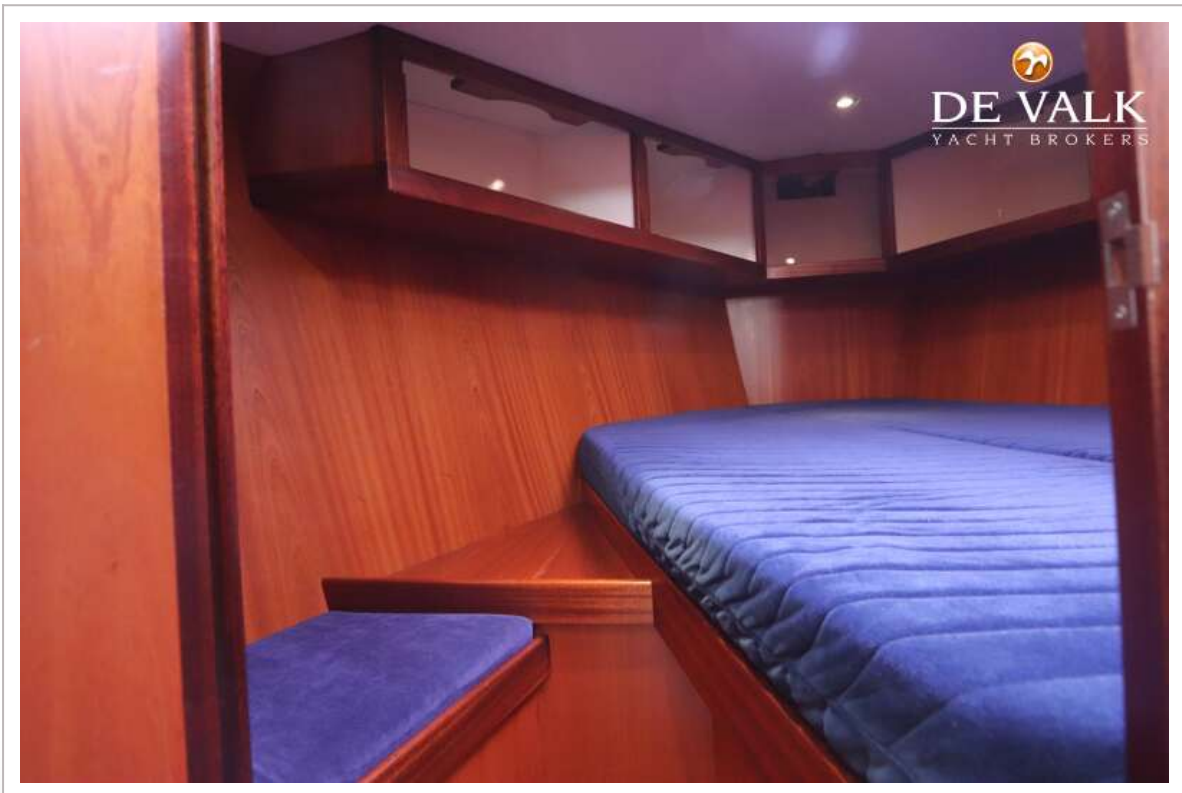




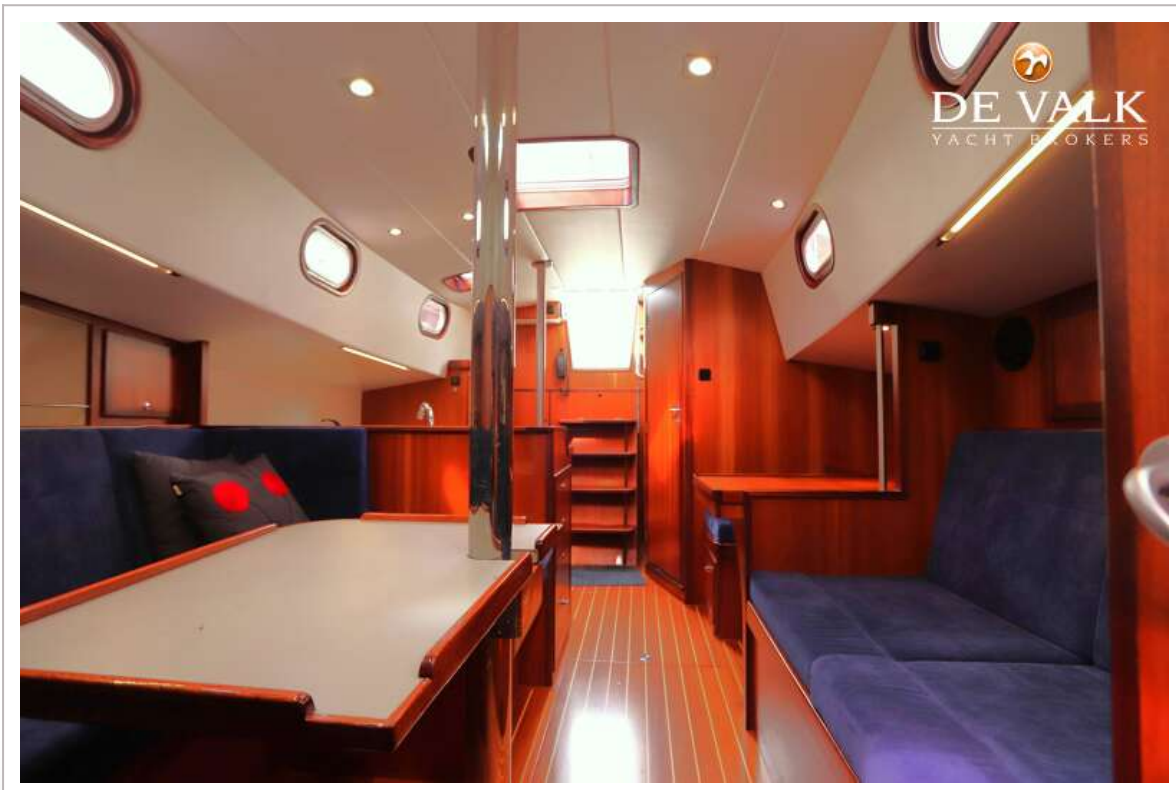
BORNRIF 33



BORNRIF 33



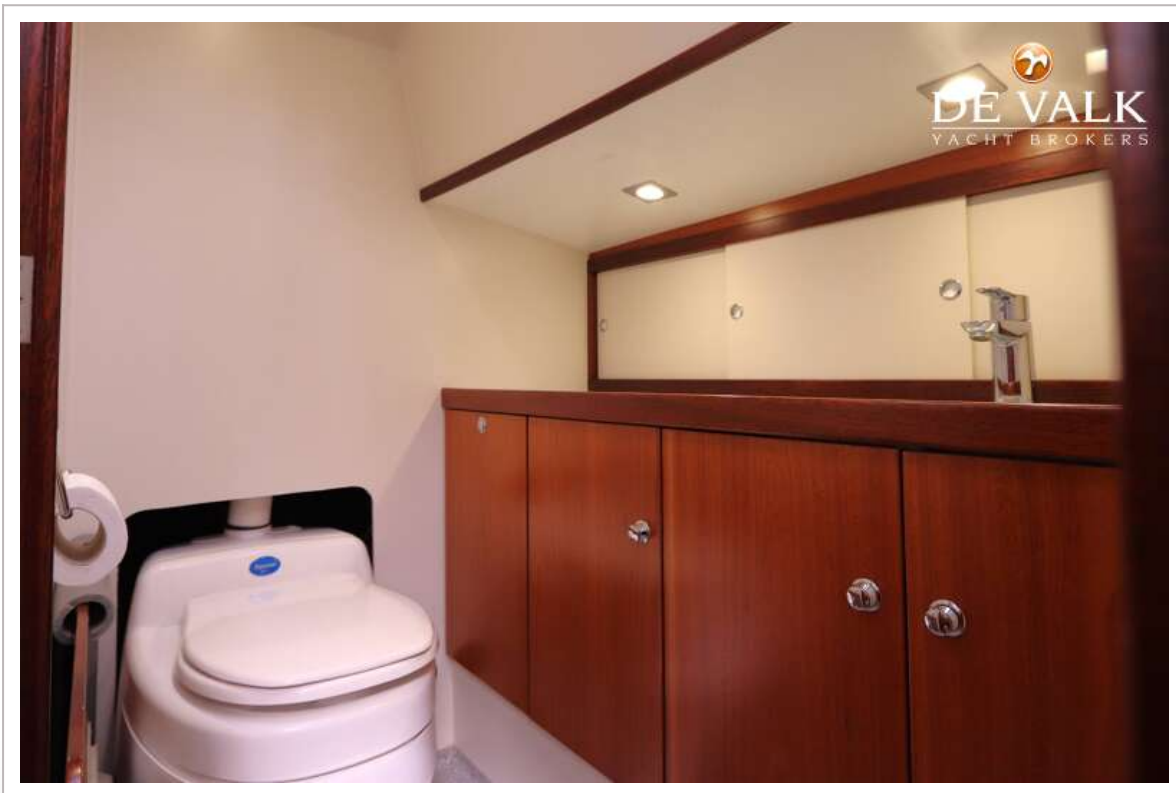
BORNRIF 33



BORNRIF 33



BORNRIF 33



BORNRIF 33





BORNRIF 33

