



DE VALK
YACHT BROKERS



LUXE MOTOR 22 M



DE VALK
YACHT BROKERS

LUXE MOTOR 22 M

BROKER'S COMMENTS

The Luxe Motor 22 (Dutch Traveller 22 metres) 'GE-JO', built in 2004, was designed by Van Der Meijden Maritiem; the hull was constructed at the SC 'Santierul Naval Orsova' SA shipyard. The finishing work on the Luxe Motor took place entirely in the Netherlands, with construction completed at the end of 2008. The Luxe Motor has been built to a very high technical standard, both in terms of steel thickness and the engine room and all the marine equipment installed. 'GE-JO' is heavily insulated and fitted with double glazing, Kabola central heating, 3x electric kick-space heaters and a wood-stove

Henk de Vries

SPECIFICATIONS

Dimensions	22.00 x 4.95 x 1.20 (m)	Builder	Santierul Naval Orsova SA
Built	2004	Cabins	3
Material	Steel	Berths	5
Engine(s)	1 x Mercedes-Benz OM402 diesel	Hp/Kw	250.00 (hp), 184.00 (kw)
Asking price	€ 575.000 (VAT Paid)	Lying	at sales office

CONTACT

Sales office	De Valk Sneek	Telephone	+31 (0)515 42 80 30
Address	Zwolsmanweg 7 8606 KC Sneek NL	E-mail	sneek@devalk.nl

DISCLAIMER

These particulars are given in good faith as supplied but cannot be guaranteed.



LUXE MOTOR 22 M

GENERAL

Model	LUXE MOTOR 22 M
Type	motor yacht
LOA (m)	22,00
LWL (m)	20,50
Beam (m)	4,95
Draft (m)	1,20
Air draft (m)	7,60
Air draft min (m)	3,20
Headroom (m)	2,10
Year built	2004
Launched	2008
Builder	Santierul Naval Orsova SA
Country	Romania
Designer	Van der Meijden Maritiem
Displacement (t)	55
Hull material	steel
Hull colour	black
Hull thickness (mm)	8 / 6
Hull shape	round-bilged
Keel type	long keel
Superstructure material	steel
Superstructure (mm)	5
Deck plate thickness (mm)	5
Rubbing strake	steel
Deck material	steel
Deck finish	paint
Superstructure deck finish	paint
Cockpit deck finish	non-skid paint
Antifouling (year)	2026
Dorades	yes



LUXE MOTOR 22 M

Window frame	yes
Window material	double glazing
Deckhatch	yes
Portholes	yes
Insulation	foam 30 mm Polyurethaan
Radar arch	collapsible
Mast can be lowered	manual
Fuel tank (litre)	steel 2.500
Fuel tank 2 (litre)	steel 2.500
Level indicator (fuel tank)	yes
Freshwater tank (litre)	stainless steel 3.000
Level indicator (freshwater)	VAF CSI Signum 10
Blackwater tank (litre)	stainless steel 750
Level indicator (blackwater)	VAF CSI Signum 10
Blackwater tank extraction	deck extraction + pump
Greywater tank (litre)	stainless steel 750
Level indicator (greywater)	VAF CSI Signum 10
Wheel steering	hydraulic Joystick steering, Stuurboord Techniek
Inside helm position	yes
More info on paintwork	Hull and superstructure painted in 2026

ACCOMMODATION

Cabins	3
Berths	5
Crew cabin	yes
Floor	Carpet & PVC
Open cockpit	yes
Aft deck	yes
Pilot house/deck saloon	yes
Saloon	yes
Headroom saloon (m)	2,20



LUXE MOTOR 22 M

Heating	central heating Kabola B17 Tap 19,7 Kw
Heating 2	(3x)Electric Kick-Spave & wood stove
Navigation center	yes
Dinette to convert into berth	yes
Opening door to cockpit	2x
Galley	2x
Countertop	corian 2x
Sink	stainless steel 2x
Cooker	electric Inventum 4-pits / Quigg 2-pits
Extractor	1x Siemens
Microwave/oven combi	1x Bosch Gourmet 822 Combi
Fridge	Bosch 199 ltr.
Freezer	Zanussi 50 ltr. ZFX305W
Hot water system	220V or central heating
Water pressure system	electrical Hydrofoor Flotec Inox 1000
Dishwasher	Miele G8181 SCVI+
Owners cabin	French bed
Bed length (m)	2,10
Wardrobe	hanging/drawers/shelves
Bathroom	shared
Toilet	shared
Toilet system	manual
Wash basin	in the bathroom
Shower	shared
Guest cabin 1	bunk bed
Bed length (m)	2,10
Wardrobe	drawers and shelves
Bathroom	shared
Toilet	shared
Toilet system	manual
Wash basin	in the cabin
Shower	shared



LUXE MOTOR 22 M

Guest cabin 2	single bed Crewcabin
Bed length (m)	2,10
Wardrobe	drawers
Bathroom	shared
Toilet	shared
Toilet system	manual
Wash basin	in the bathroom
Shower	shared
Washing machine	Bosch
Central vacuum cleaner	Smart "Central Vacuum System"

MACHINERY

No of engines	1
Make	Mercedes-Benz
Type	OM402
HP	250
kW	184
Fuel	diesel
Year installed	2006
Consumption (l/hr)	9
Engine hours	425
Engine cooling system	freshwater heat exchanger
Drive	shaft
Shaft seal	yes
Engine controls	electrical Kobelt
Gearbox	hydraulic
Bowthruster	electric Aron (30 hp)
Gearbox	hydraulic Twin Disk MG509 (3.2:1)
Exhaust	watercooled
Thrust bearing	yes
Propeller type	fixed



LUXE MOTOR 22 M

Propeller blades	4 (32" approx. 80 cm)
Propeller shaft material	stainless steel 60 mm
Shaft lubrication	water
Manual bilge pump	yes
Electric bilge pump	yes
Bilge alarm	4x
Electrical installation	12V / 24V / 220V / 380V
Generator	Newage Stamford 20 KVA 220V & 380V
Running hours generator	413
Generator 2	Second dynamo on main engine 24V/100amp
Batteries	yes
Start battery	Optima 24V / 75Ah
Service battery	12x Mastervolt MVSV Gel, 2V 1000Ah (2024)
Navigation Battery	Victron 24V / 200Ah
Generator battery	Optima 24V / 75Ah
Bowthruster battery	yes
Battery monitor	2x Victron Energy BMV-501
Battery charger	Victron Energy Phoenix 24V / 16Amp
Battery charger/inverter	2x Victron 24V /3000W 70A Combi.
Solar panel	4 x 435W (large)
Shorepower	with cable
Spud pole	Front & rear, with cameras
Extra info	Hydraulic system by: Hydro Marine / Motrac Hydraulics.

NAVIGATION

Electric compass	Navman 8084
Depth sounder/log	Navman 8084
VHF	2x Navman VHF 7100
Rudder angle indicator	& Curve meter, Stuurboord Techniek
Plotter	Navman 8084
AIS transceiver	True Heading AIS Vision Pro transceiver Class A.



LUXE MOTOR 22 M

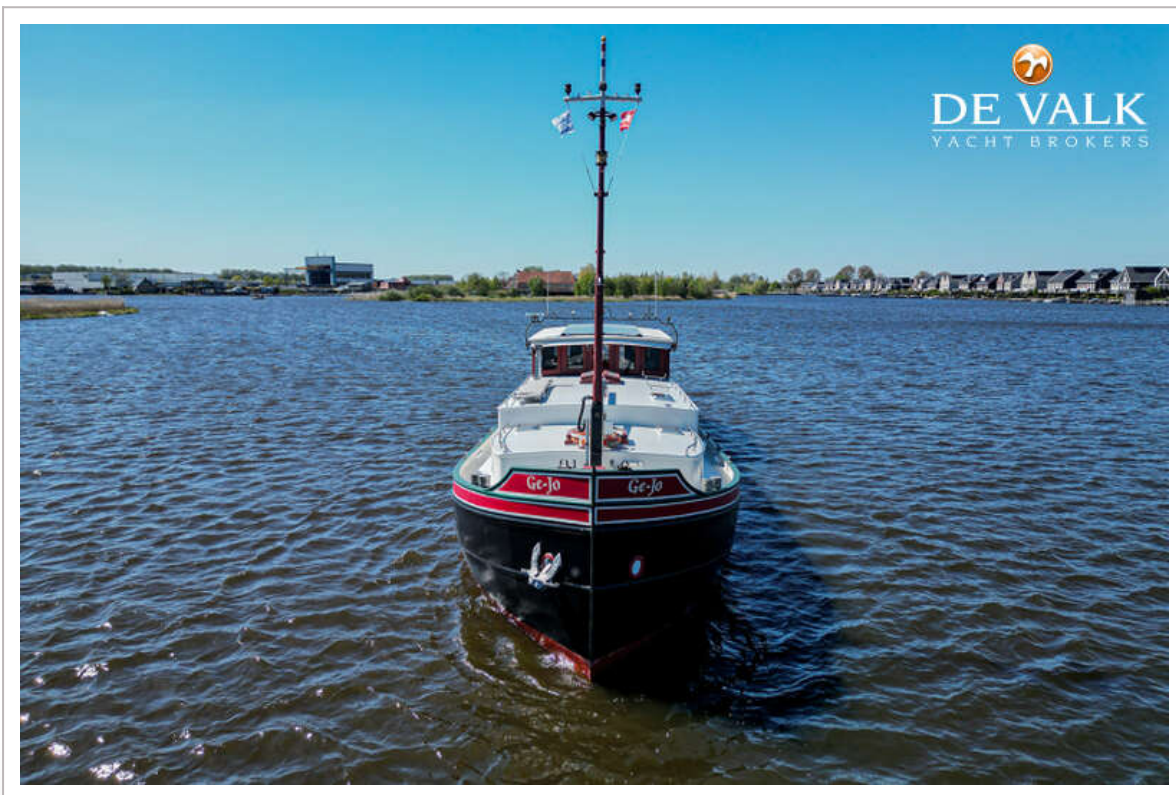
Camera	Outside & engine compartment
Navigation lights	yes
Extra info	Extra navigationsystem on Acer Laptop
Extra info	Navigation Control HTO 1264 24Vdc.

EQUIPMENT

Fixed windscreen	yes
Bimini	yes
Cockpit cushions	yes
Cockpit table	yes
Cockpit chairs	yes
Anchor	yes
Anchor chain	50 mtr.
Windlass	manual
Deck wash	yes
Davits	steel
Davits controls	manual
Grab rail (superstructure)	yes
Wiper	yes
Horn	air pressure
Fenders	yes
Mooring lines	yes
TV	2x flatscreen: Nokia & Sony
TV receiver	Digitenne
Radio-cd player	Jensen JWM990 "Bluetooth" CD & DVD
Speakers in salon	yes
Clock - barometer	Wempe
Fire extinguisher	5 x (2026) & VAF Signum 10, fire detector 10 sensors.



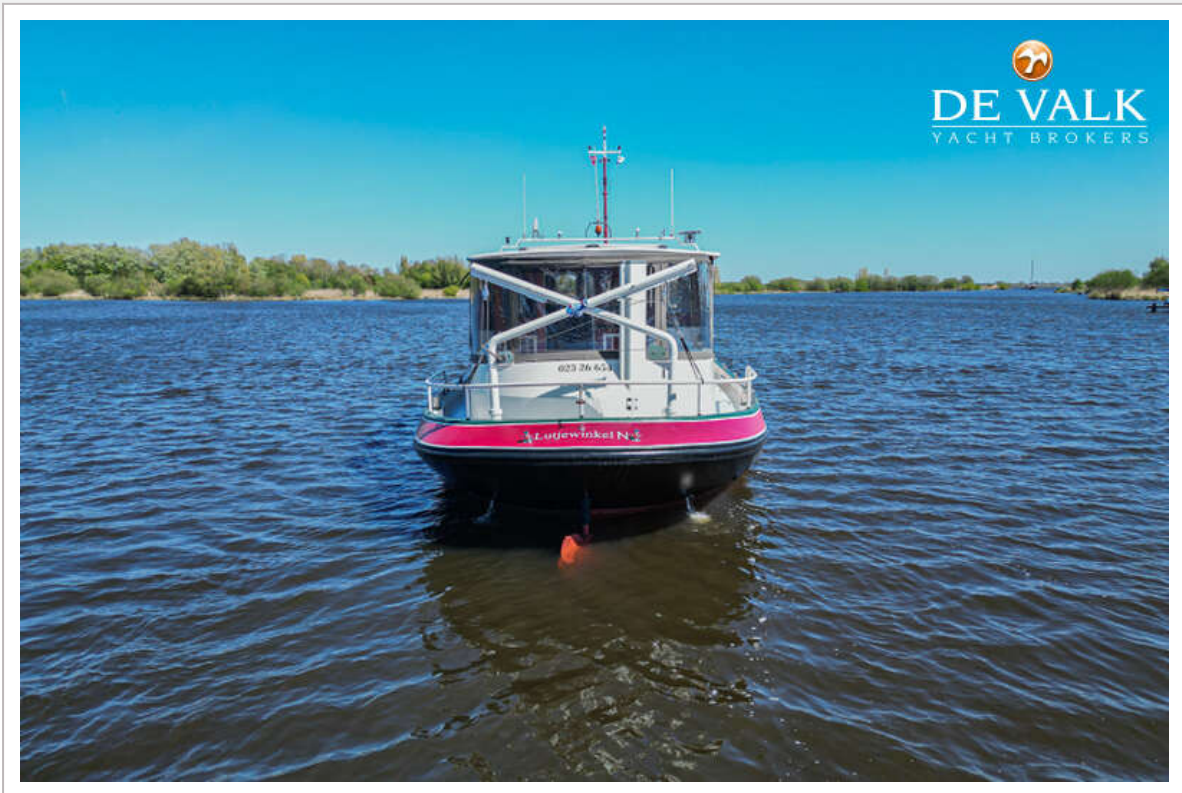
LUXE MOTOR 22 M



LUXE MOTOR 22 M



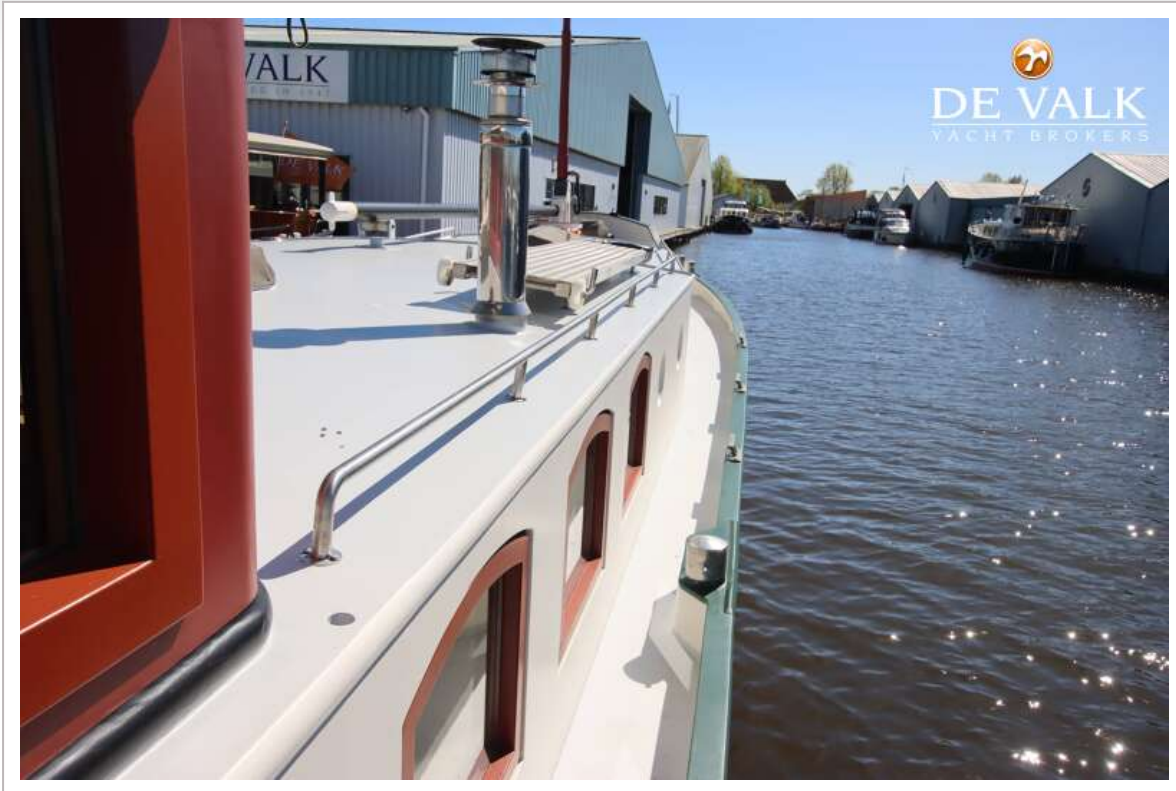
LUXE MOTOR 22 M



LUXE MOTOR 22 M



LUXE MOTOR 22 M



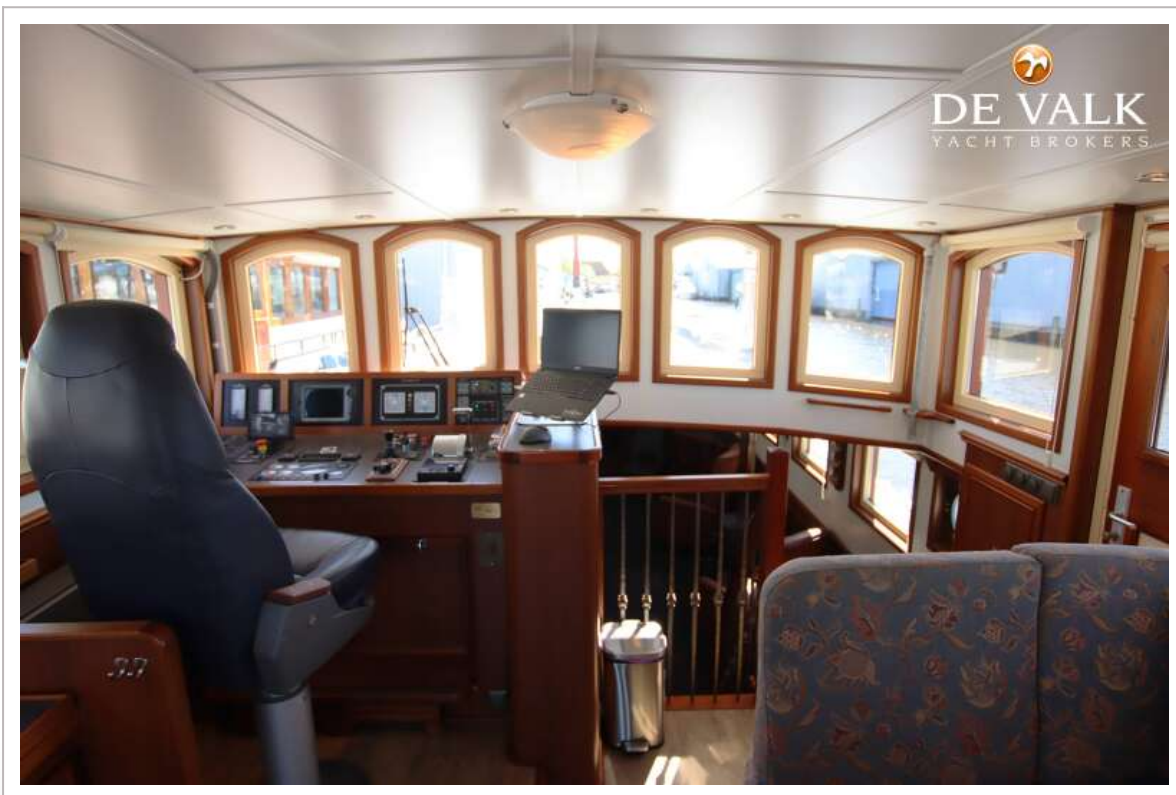
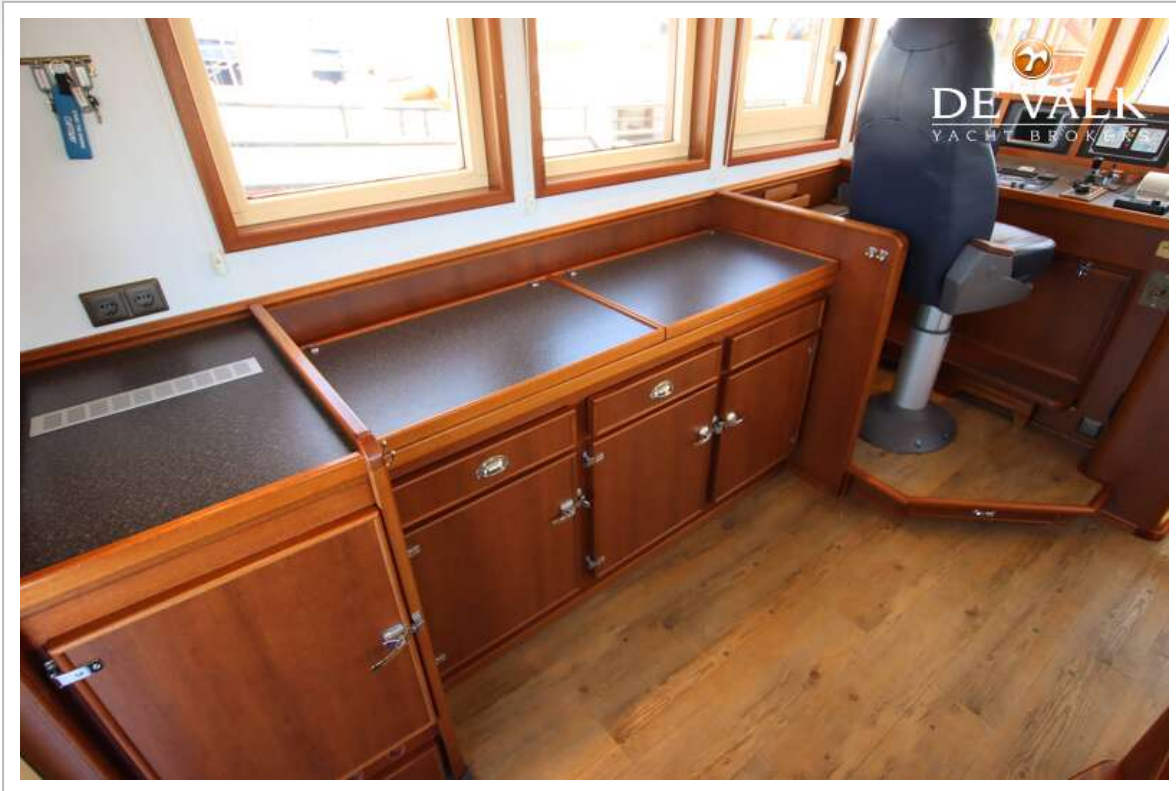
LUXE MOTOR 22 M



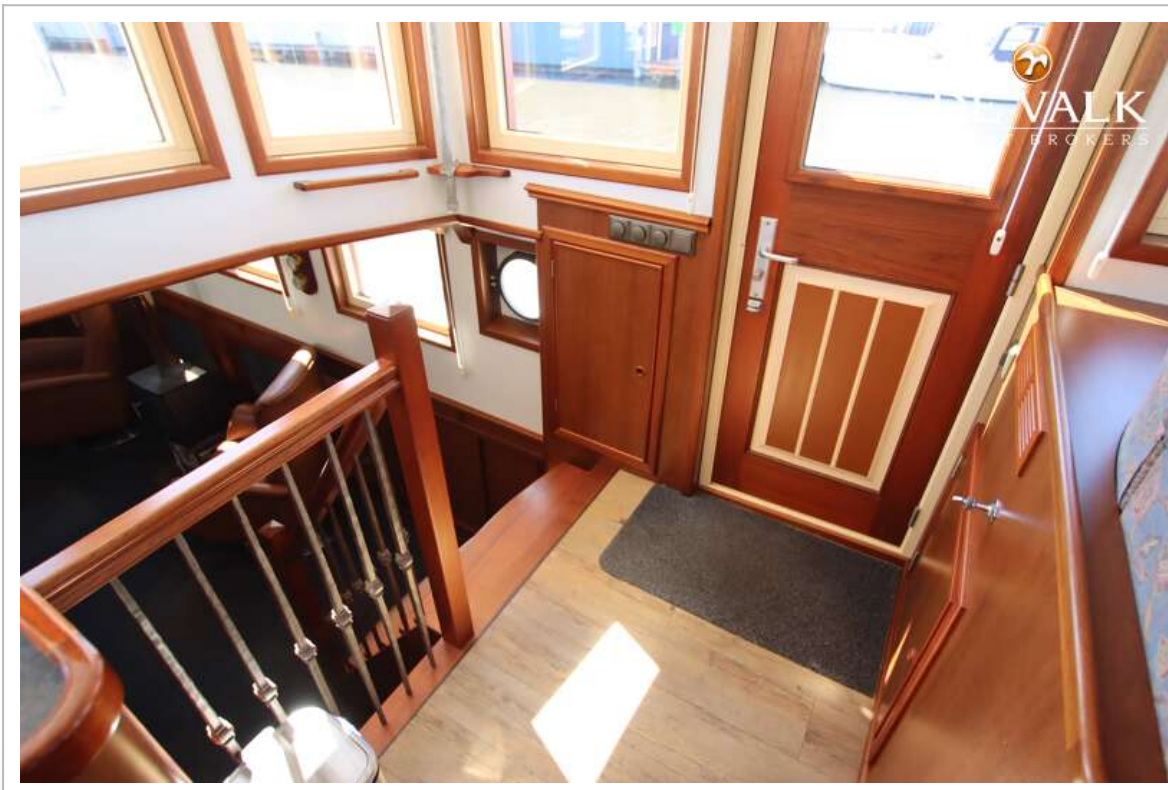
LUXE MOTOR 22 M



LUXE MOTOR 22 M



LUXE MOTOR 22 M



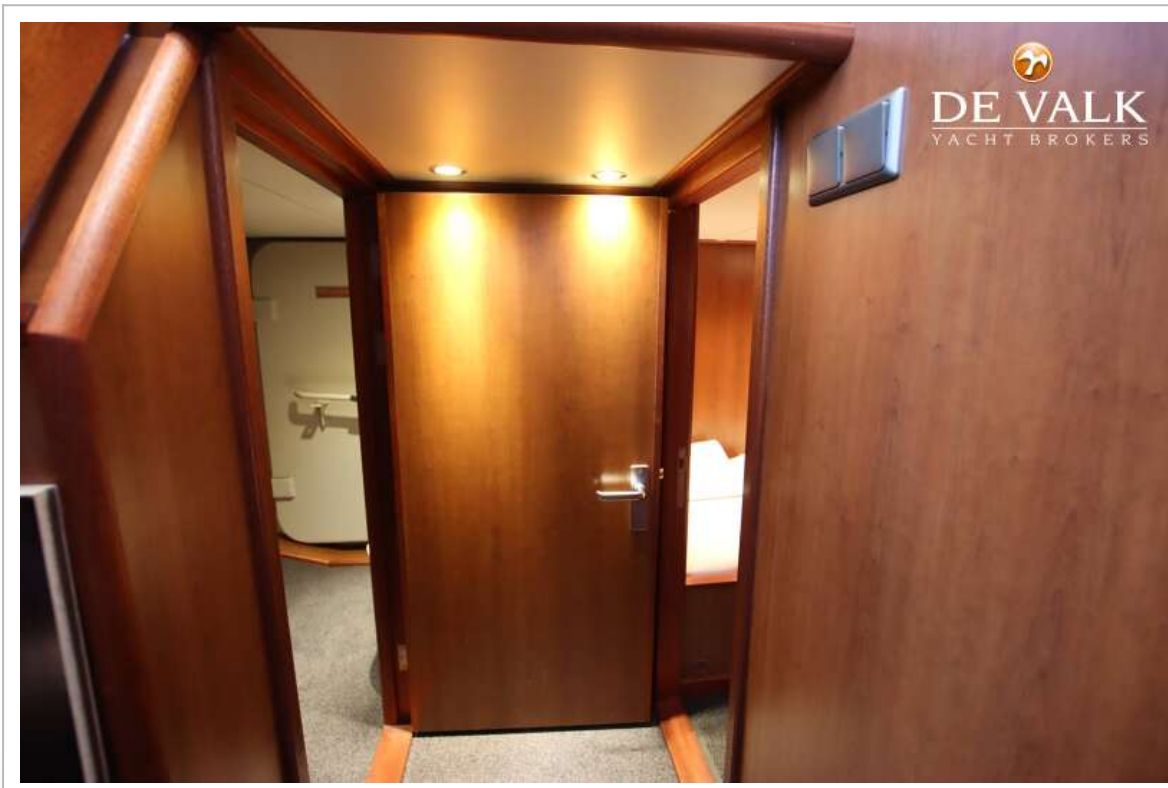
LUXE MOTOR 22 M



LUXE MOTOR 22 M



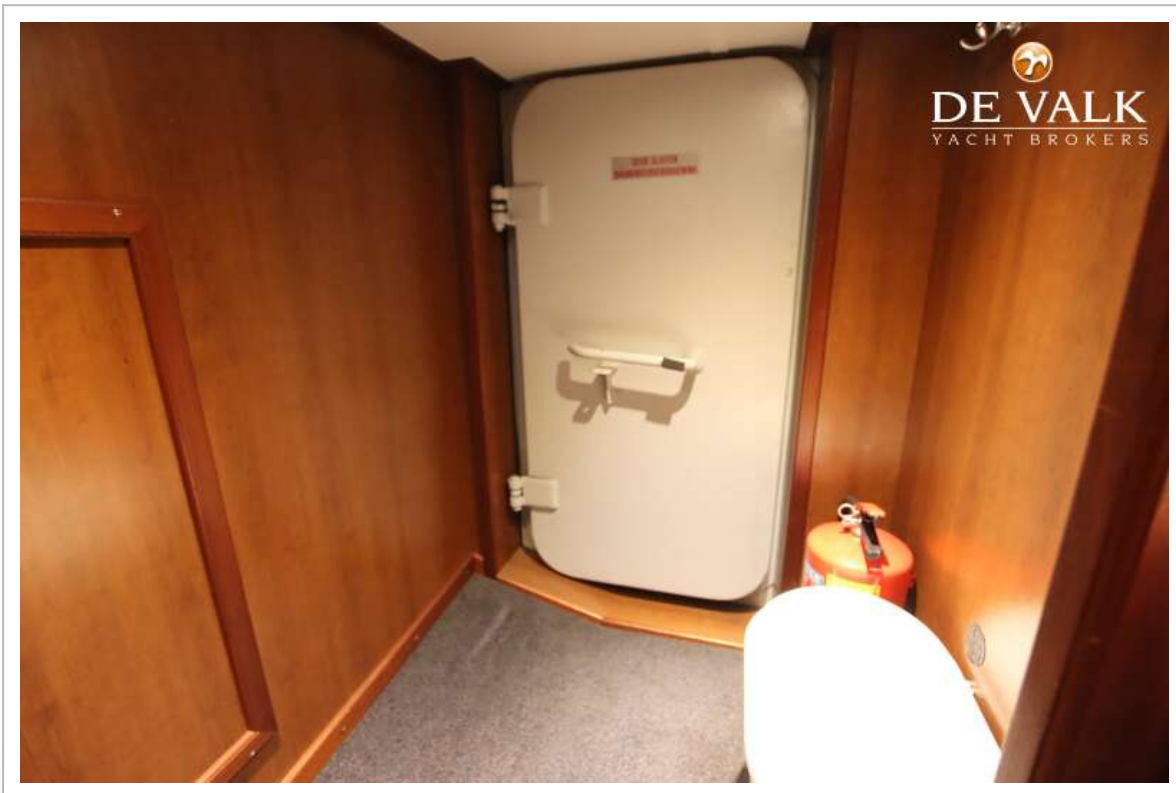
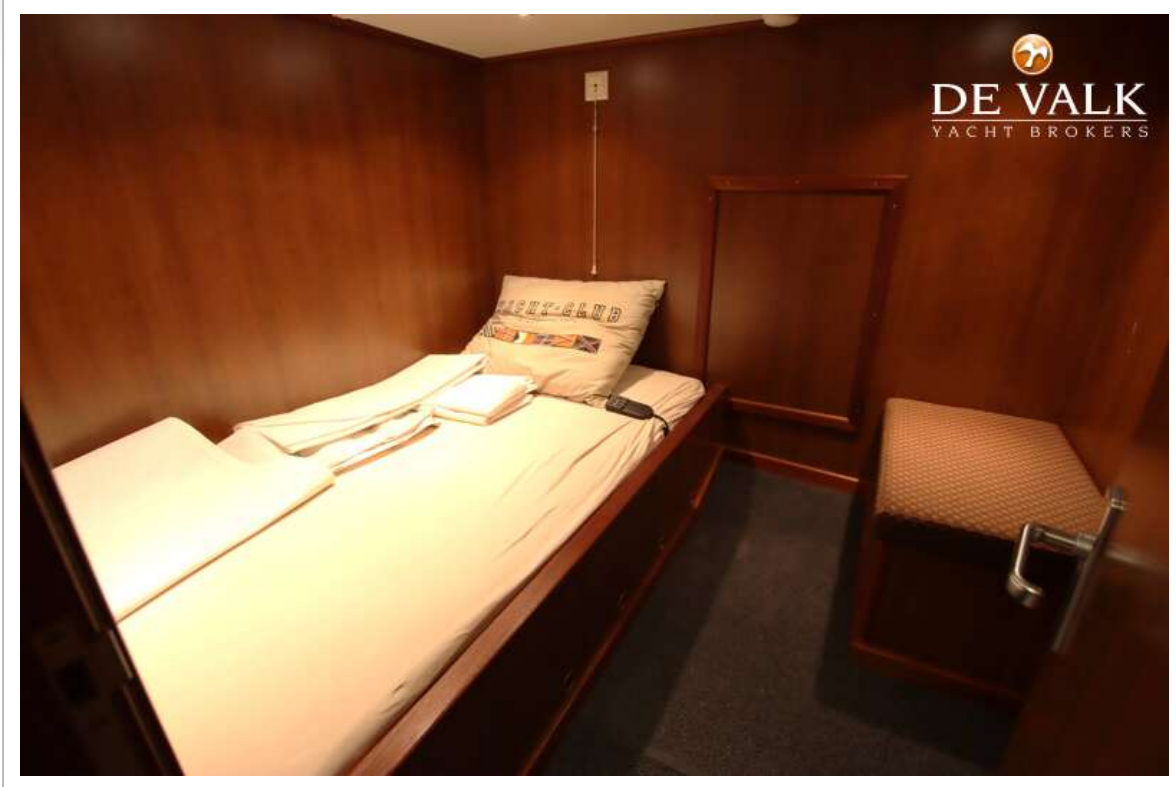
LUXE MOTOR 22 M



LUXE MOTOR 22 M



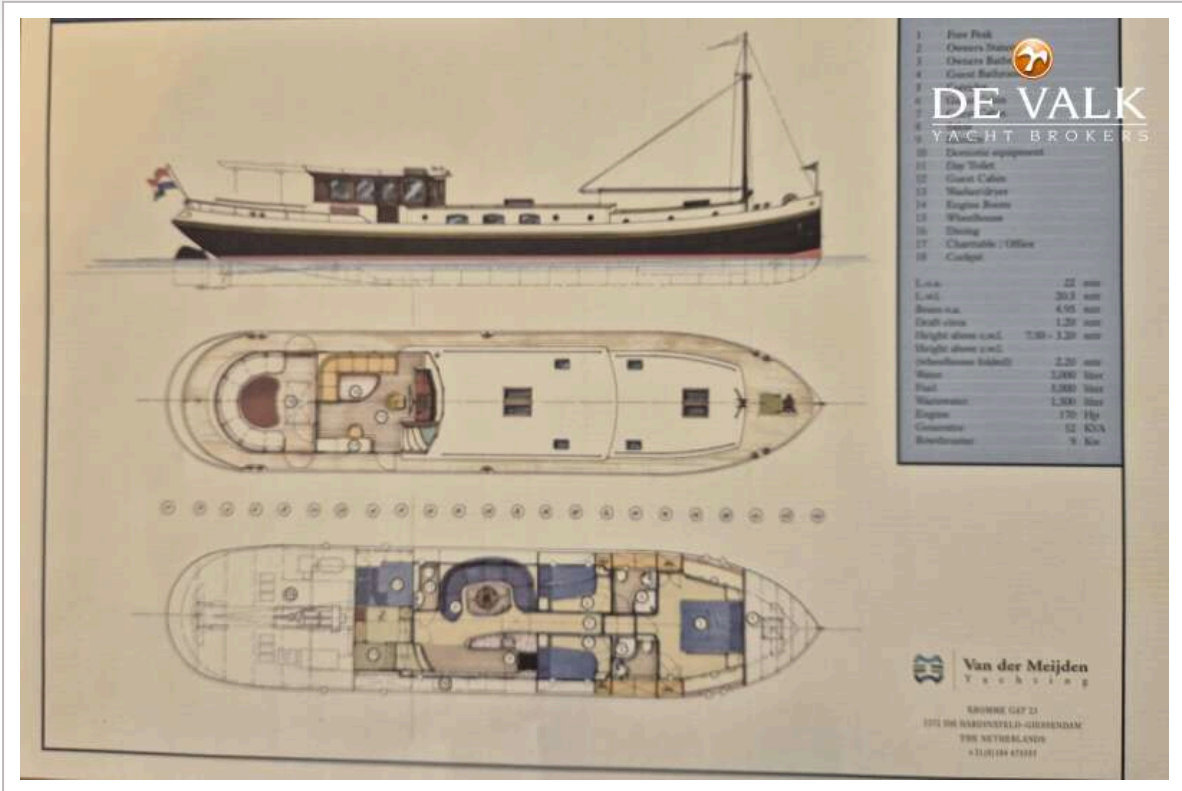
LUXE MOTOR 22 M



LUXE MOTOR 22 M



LUXE MOTOR 22 M



LUXE MOTOR 22 M



LUXE MOTOR 22 M

