



DE VALK  
YACHT BROKERS



## SMELNE VLET 1200



DE VALK  
YACHT BROKERS

# SMELNE VLET 1200

## BROKER'S COMMENTS

The Smelne Vlet 1200 is a classically lined and solidly built motor yacht, offering excellent handling and a high level of comfort. Suitable for both day trips and extended stays on board, with wide and safe side decks all around. The interior is warm and practical, featuring a comfortable living area, sleeping accommodation for 6 people, a fully equipped galley, and a neat bathroom. The generator provides additional convenience and independence on board. The reliable Perkins diesel engine, combined with bow and stern thrusters, ensures easy manoeuvring. A comfortable and well-equipped yacht

*Julian de Heer*

## SPECIFICATIONS

<b>Dimensions</b>	12.75 x 4.15 x 2,70 / 1.15 (m)	<b>Builder</b>	Smelne
<b>Built</b>	2007	<b>Cabins</b>	2
<b>Material</b>	Steel	<b>Berths</b>	6
<b>Engine(s)</b>	1 x Perkins diesel	<b>Hp/Kw</b>	185.00 (hp), 136.16 (kw)
<b>Asking price</b>	€ 239.000 (VAT Paid)	<b>Lying</b>	contact Loosdrecht

## CONTACT

<b>Sales office</b>	De Valk Loosdrecht B.V.	<b>Telephone</b>	+31 (0)35 582 90 30
<b>Address</b>	't Breukeleveense Meentje 6 1231LM Loosdrecht / Wijdmeren NL	<b>E-mail</b>	loosdrecht@devalk.nl

## DISCLAIMER

These particulars are given in good faith as supplied but cannot be guaranteed.



# SMELNE VLET 1200

## GENERAL

<b>Model</b>	SMELNE VLET 1200
<b>Type</b>	motor yacht
<b>LOA (m)</b>	12,75
<b>Beam (m)</b>	4,15
<b>Draft (m)</b>	1,15
<b>Draft min (m)</b>	2,70
<b>Year built</b>	2007
<b>Launched</b>	2007
<b>Builder</b>	Smelne
<b>Country</b>	The Netherlands
<b>Displacement (t)</b>	13
<b>CE norm</b>	B
<b>Hull material</b>	steel
<b>Hull colour</b>	blue
<b>Hull shape</b>	multi hard chine
<b>Superstructure material</b>	steel
<b>Deck material</b>	steel
<b>Deck finish</b>	teak
<b>Cockpit deck finish</b>	teak
<b>Window frame</b>	aluminium
<b>Window material</b>	double glazing
<b>Deckhatch</b>	yes
<b>Portholes</b>	stainless steel
<b>Radar arch</b>	non collapsible
<b>Mast can be lowered</b>	hydraulic
<b>Fuel tank (litre)</b>	steel 650L
<b>Level indicator (fuel tank)</b>	yes
<b>Freshwater tank (litre)</b>	stainless steel 600
<b>Level indicator (freshwater)</b>	yes
<b>Blackwater tank (litre)</b>	steel 400



Level indicator (blackwater)	yes
Blackwater tank extraction	deck extraction + pump
Wheel steering	hydraulic
Outside helm position	yes
Emergency tiller	yes

## ACCOMMODATION

Cabins	2
Berths	6
Interior	mahogany
Floor	teak
Aft deck	yes
Saloon	yes
Heating	diesel ducted hot air
Air-conditioning	single cycle airco 16000 BTU
Aft Cabin	yes
Dinette	yes
Opening door to aft deck	yes
Galley	yes
Countertop	corian
Sink	emaille
Cooker	calor gas
Microwave/oven combi	yes
Fridge	2x fridge, 130 en 60L
Freezer	Waeco
Owners cabin	double bed
Bed length (m)	2m
Wardrobe	hanging/drawers/shelves
Bathroom	en suite
Toilet	en suite
Toilet system	electric



# SMELNE VLET 1200

Wash basin	in the bathroom
Shower	en suite
Guest cabin 1	double bed + single bed
Bed length (m)	2m
Wardrobe	hanging/drawers/shelves

## MACHINERY

No of engines	1
Make	Perkins
HP	185
kW	136.16
Fuel	diesel
Maximum speed (kn)	8,6
Cruising speed (kn)	6
Consumption (l/hr)	8
Engine cooling system	freshwater heat exchanger
Drive	shaft
Engine controls	bowden cable
Gearbox	hydraulic
Bowthruster	electric
Sternthruster	electric
Exhaust	watercooled
Thrust bearing	yes
Propeller type	fixed
Propeller blades	4 blades
Propeller shaft material	stainless steel
Shaft lubrication	water
Manual bilge pump	yes
Electric bilge pump	yes
Bilge alarm	yes
Electrical installation	12v / 220v



Generator	yes
Batteries	yes
Start battery	yes
Service battery	yes
Navigation Battery	yes
Bowthruster battery	yes
Battery monitor	yes
Battery charger	yes
Inverter	yes
Diode battery combiners	yes
Shorepower	with cable

## NAVIGATION

Compass	Raytheon Tridata ST60
Multi control display	yes
Depth sounder	yes
Log	yes
VHF	yes
Autopilot	Raytheon ST6002
Rudder angle indicator	yes
Radar	yes
GPS	yes
Plotter	yes
Plotter/GPS	yes
Electronic chart(s)	yes
Radio receiver	yes
Transmitter	yes
Navigation lights	yes
Searchlight	yes

## EQUIPMENT

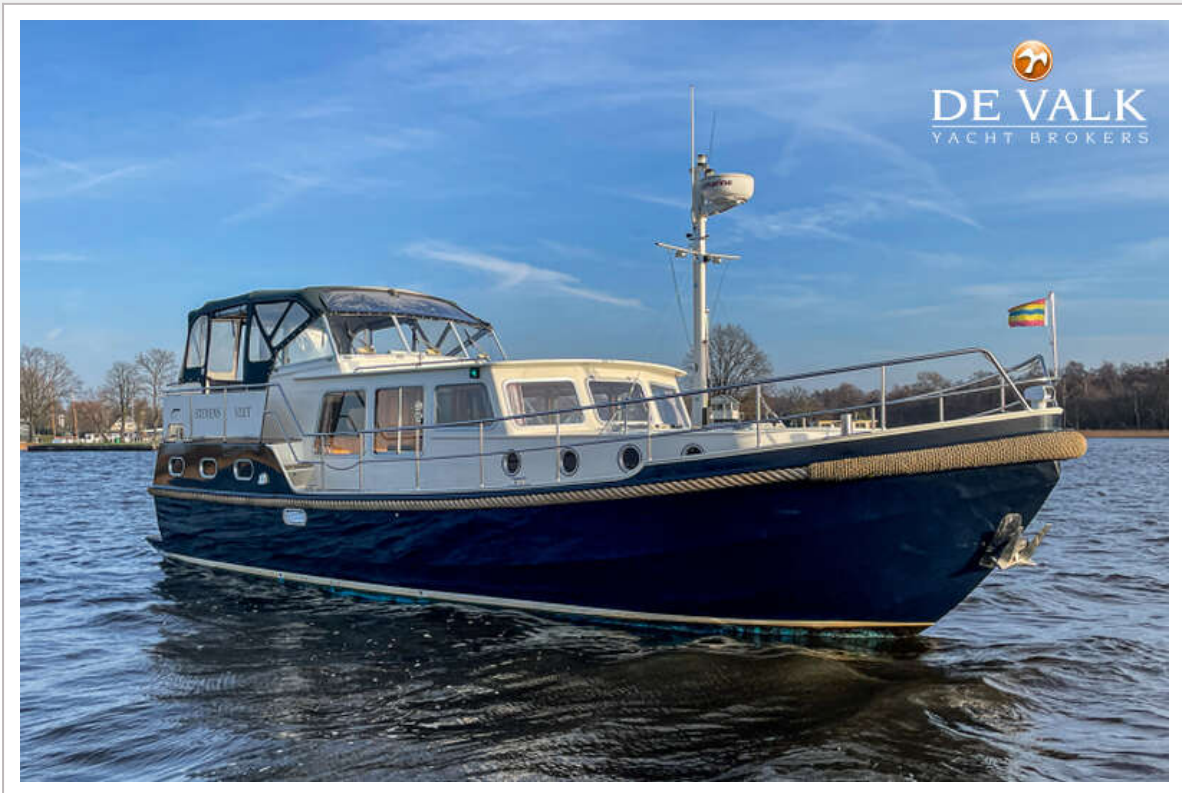


# SMELNE VLET 1200

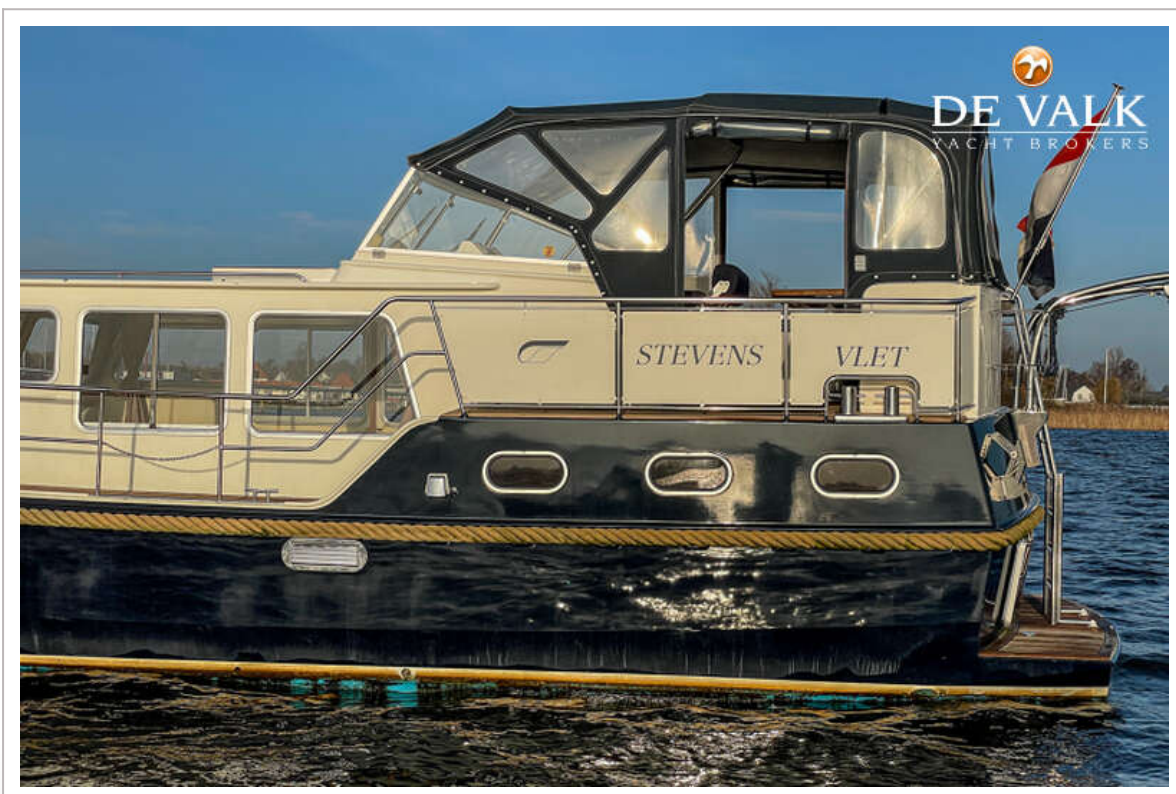
Fixed windscreen	yes
Fixed hardtop	yes
Cockpit cover	yes
Winter cover	yes
Window cover	yes
Cockpit cushions	yes
Cockpit table	yes
Cockpit chairs	yes
Bathing platform	yes
Boarding ladder	yes
Transom door	yes
Deck shower	yes
Anchor	yes
Anchor chain	yes
Other ground tackle	yes
Windlass	electrical
Deck wash	yes
Davits	steel
Sea railing	stainless steel
Grab rail (superstructure)	stainless steel
Railing side opening gates	yes
Safety lines on deck	yes
Wiper	yes
Clearview window	yes
Horn	yes
Fenders	yes
Satellite	yes



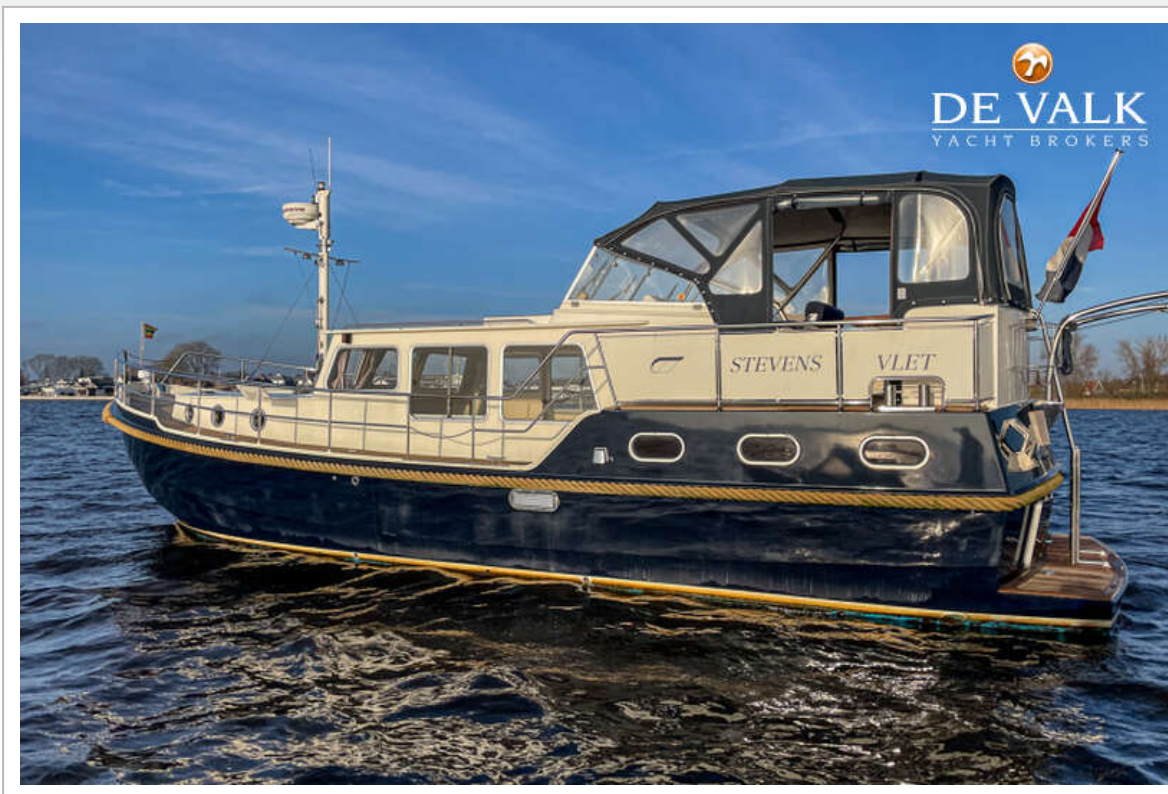
# SMELNE VLET 1200



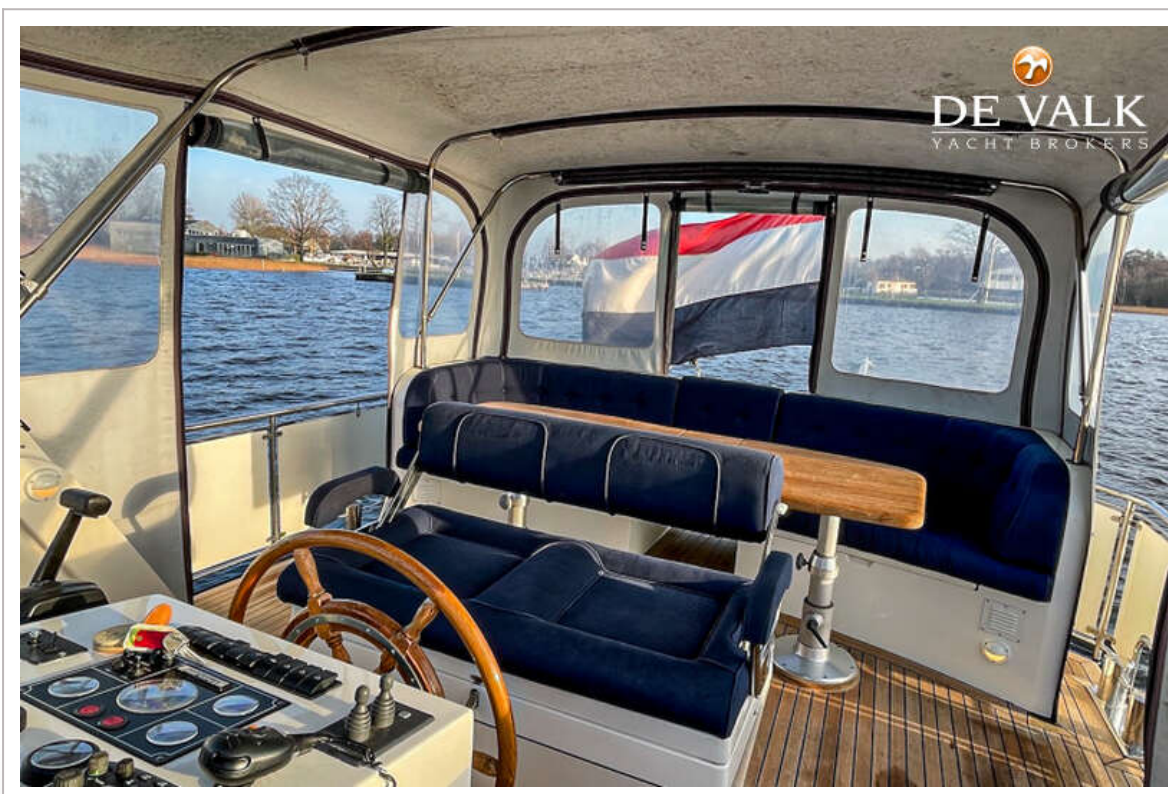
# SMELNE VLET 1200



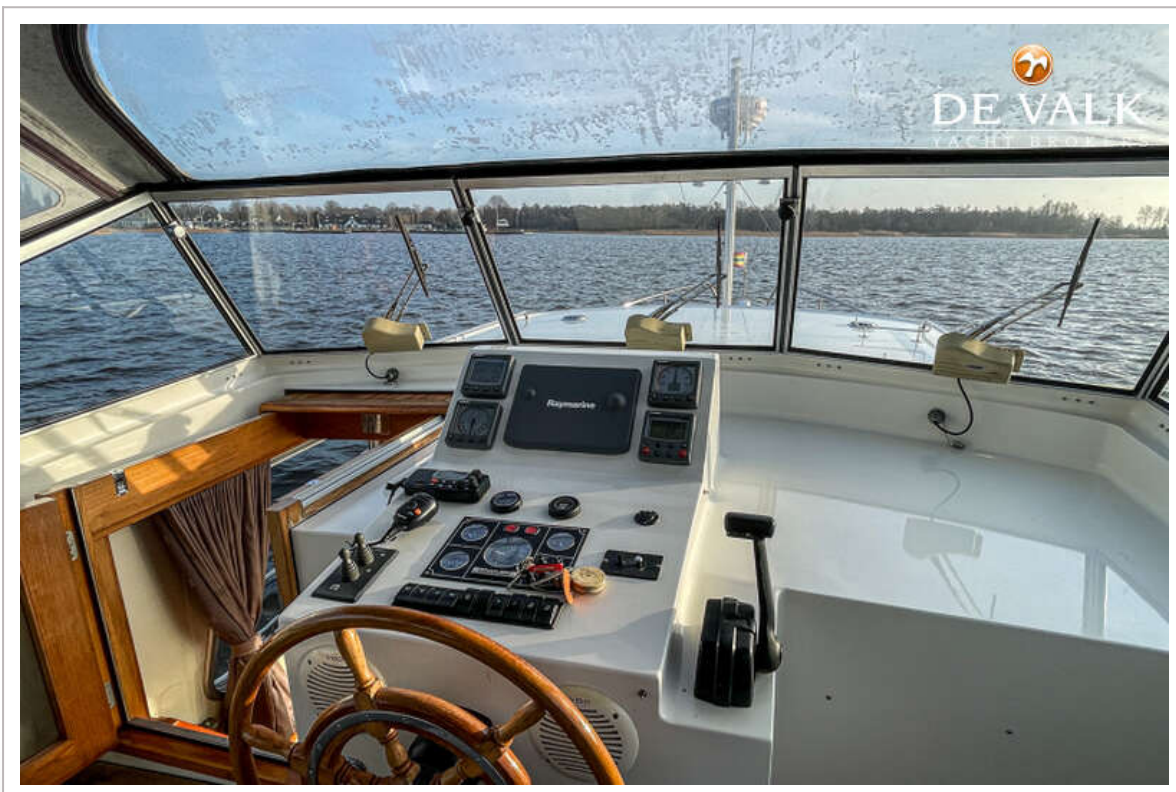
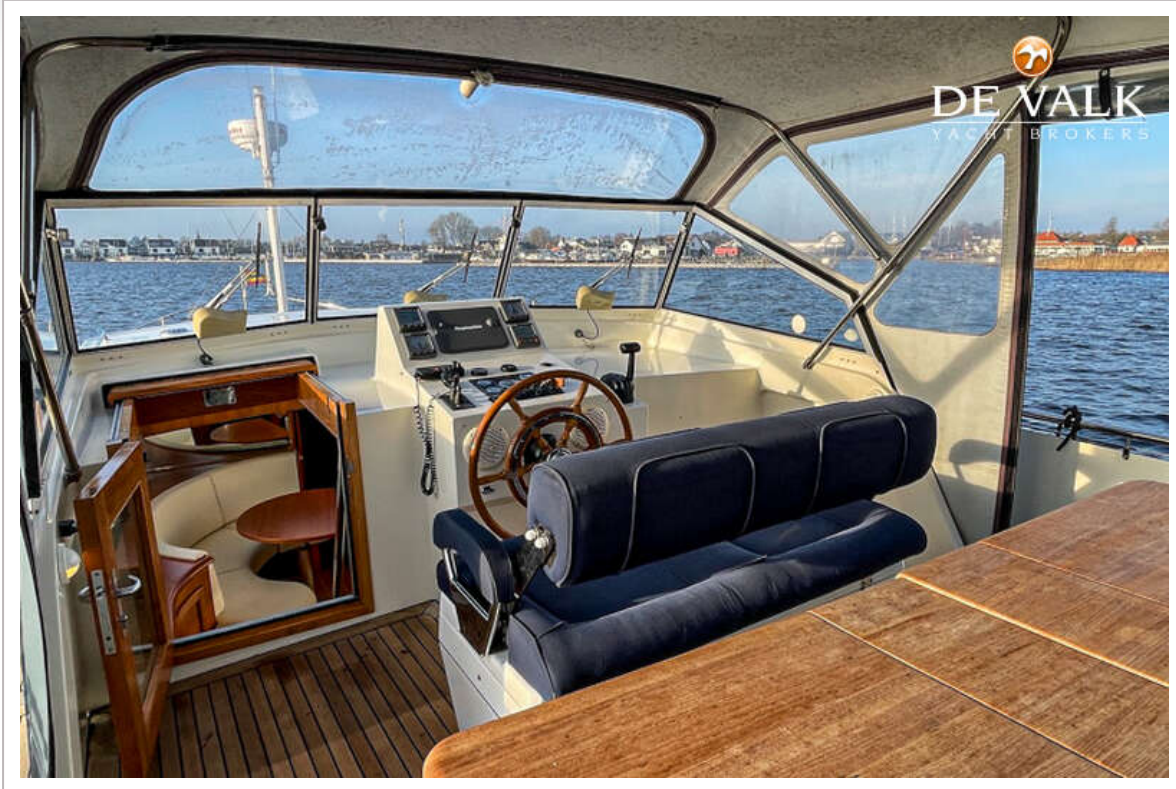
# SMELNE VLET 1200



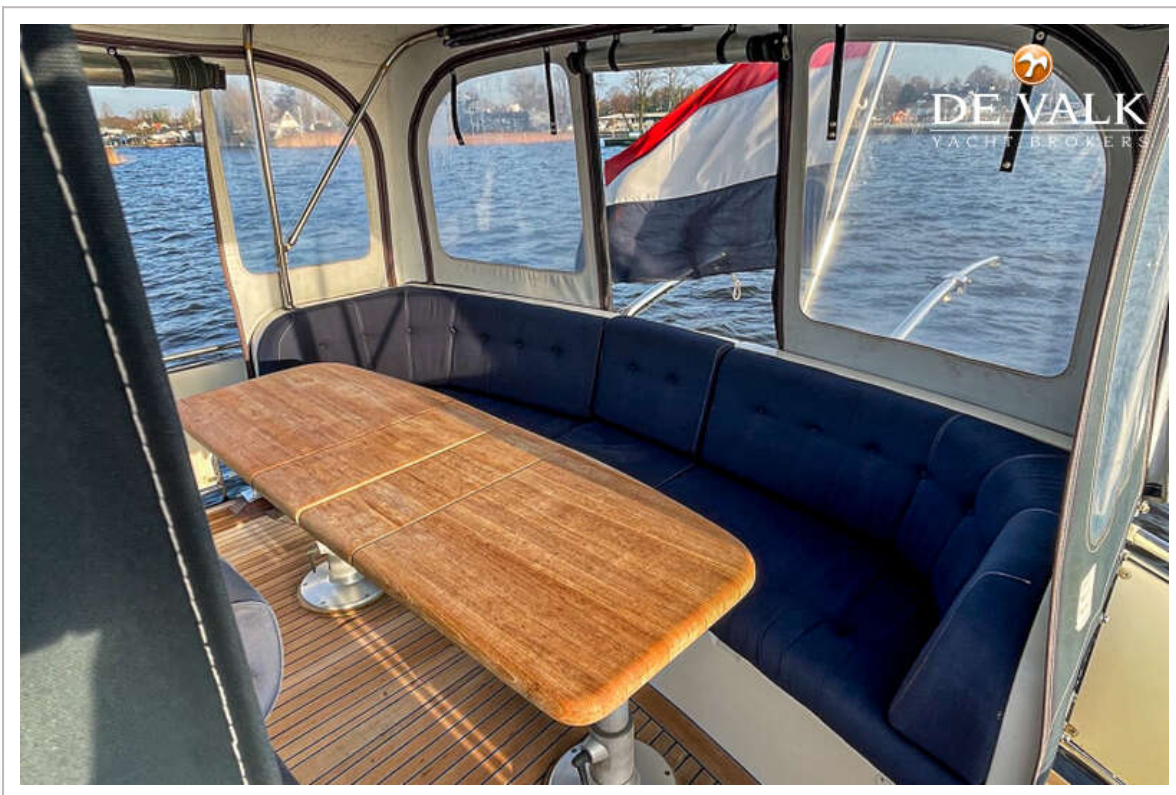
# SMELNE VLET 1200



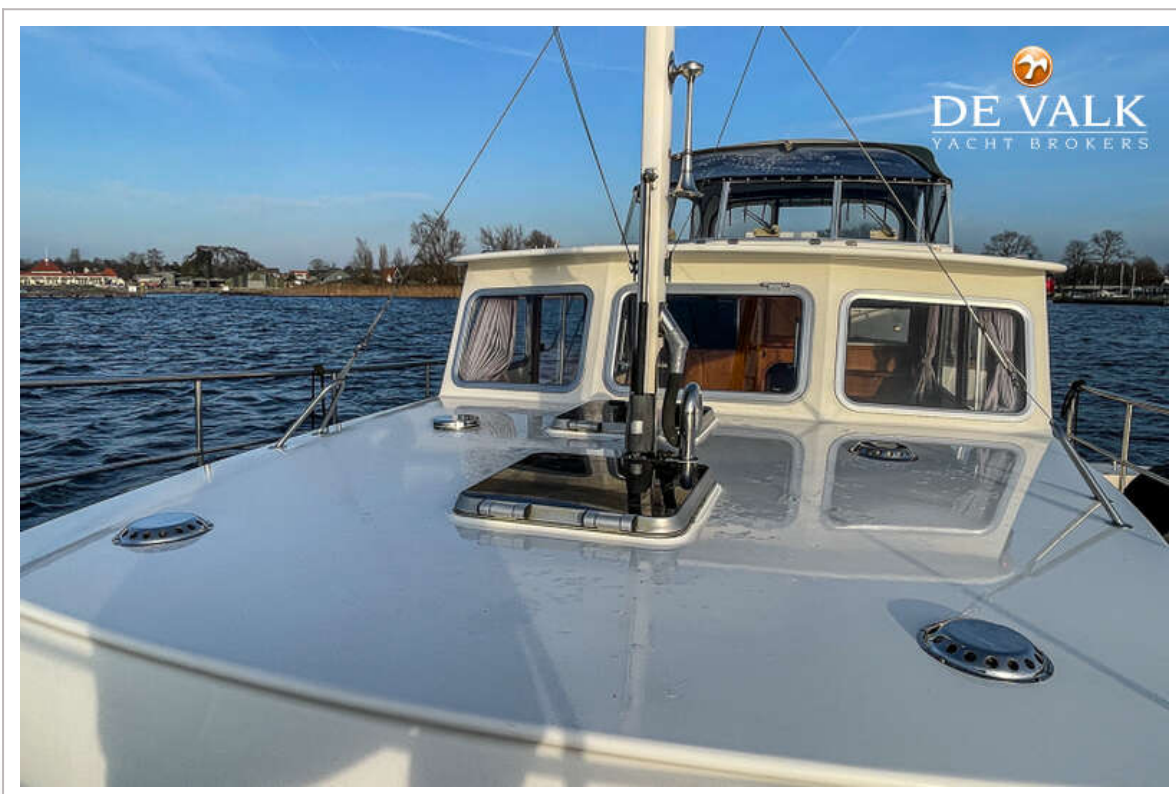
# SMELNE VLET 1200



# SMELNE VLET 1200



# SMELNE VLET 1200



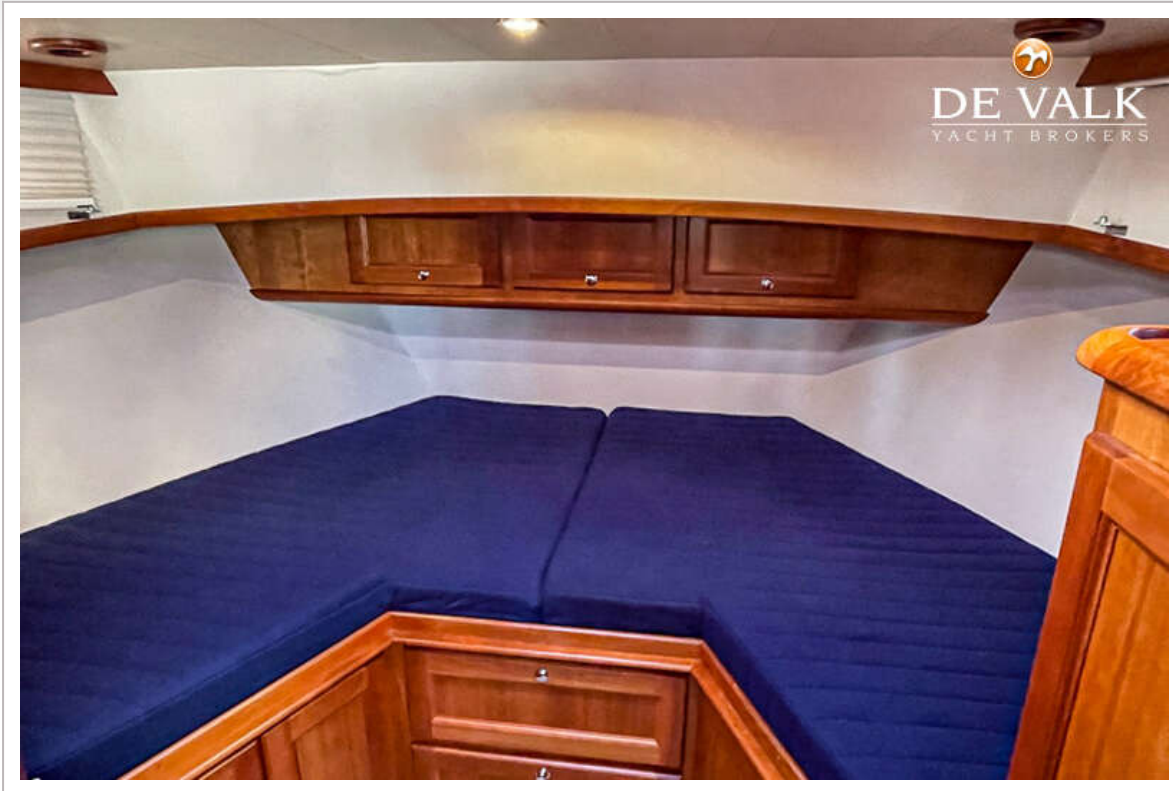
# SMELNE VLET 1200



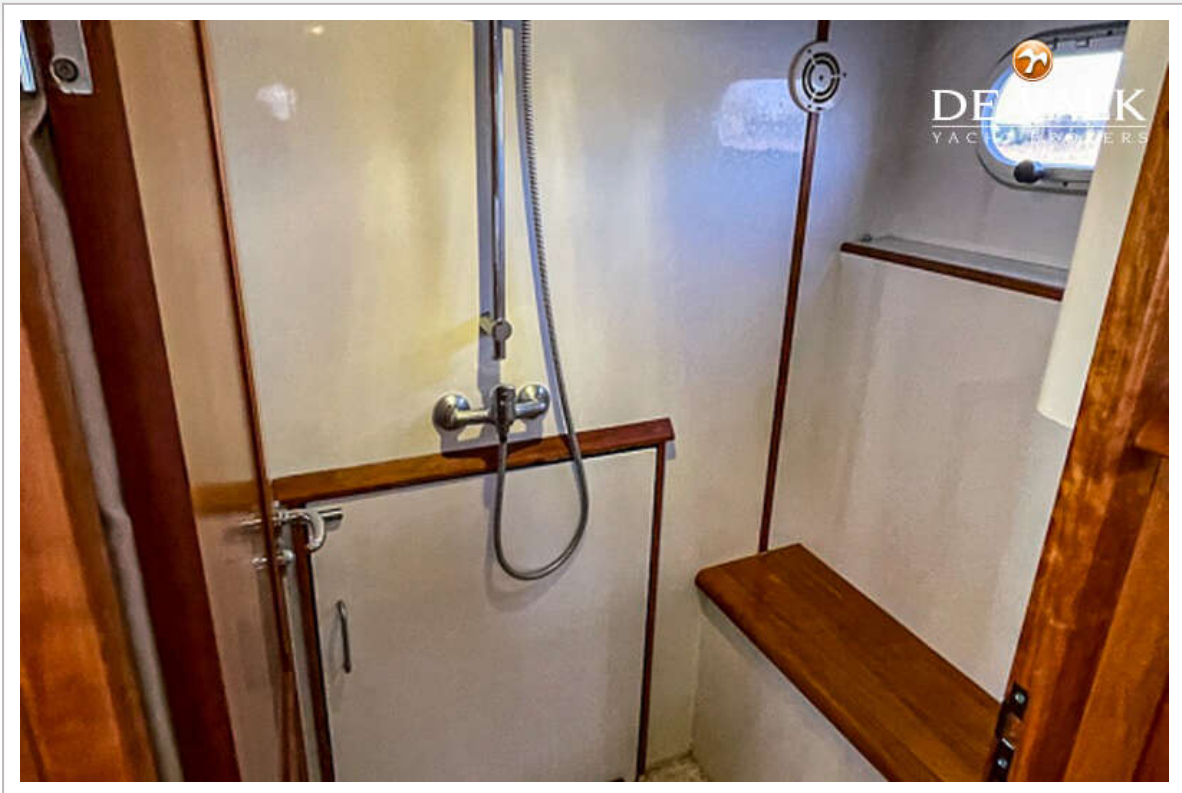
# SMELNE VLET 1200



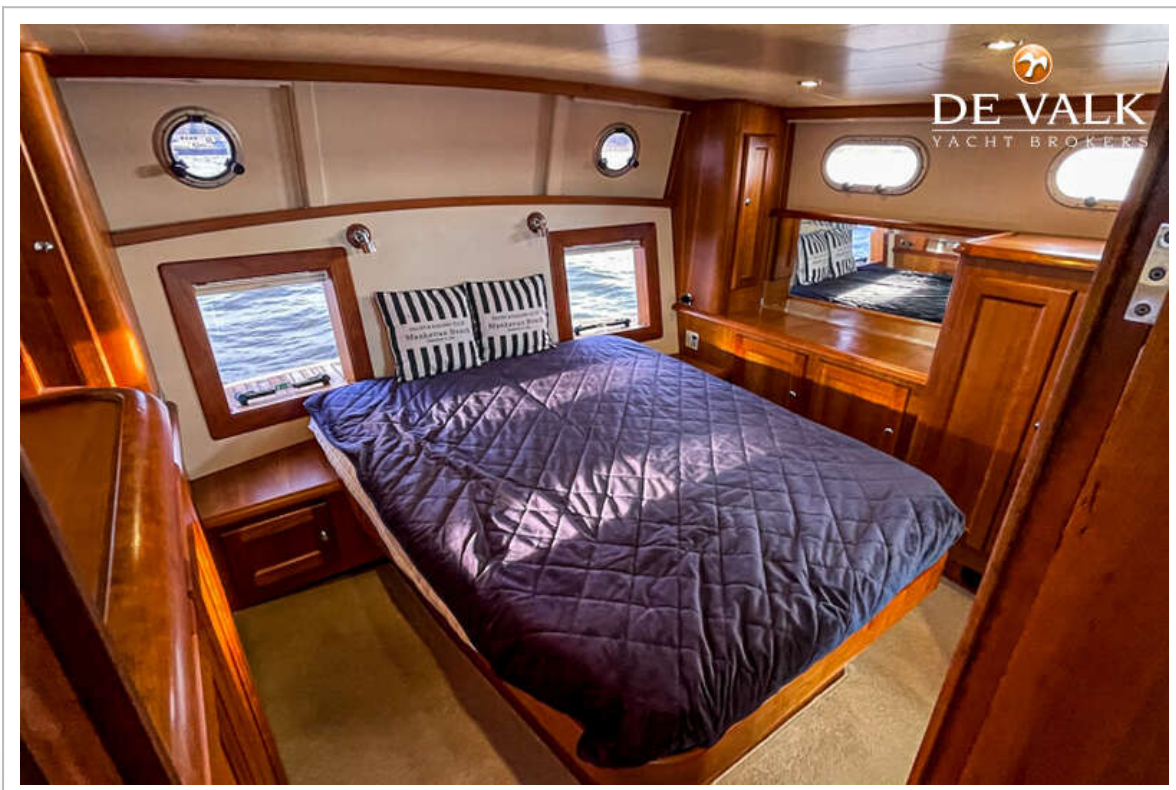
# SMELNE VLET 1200



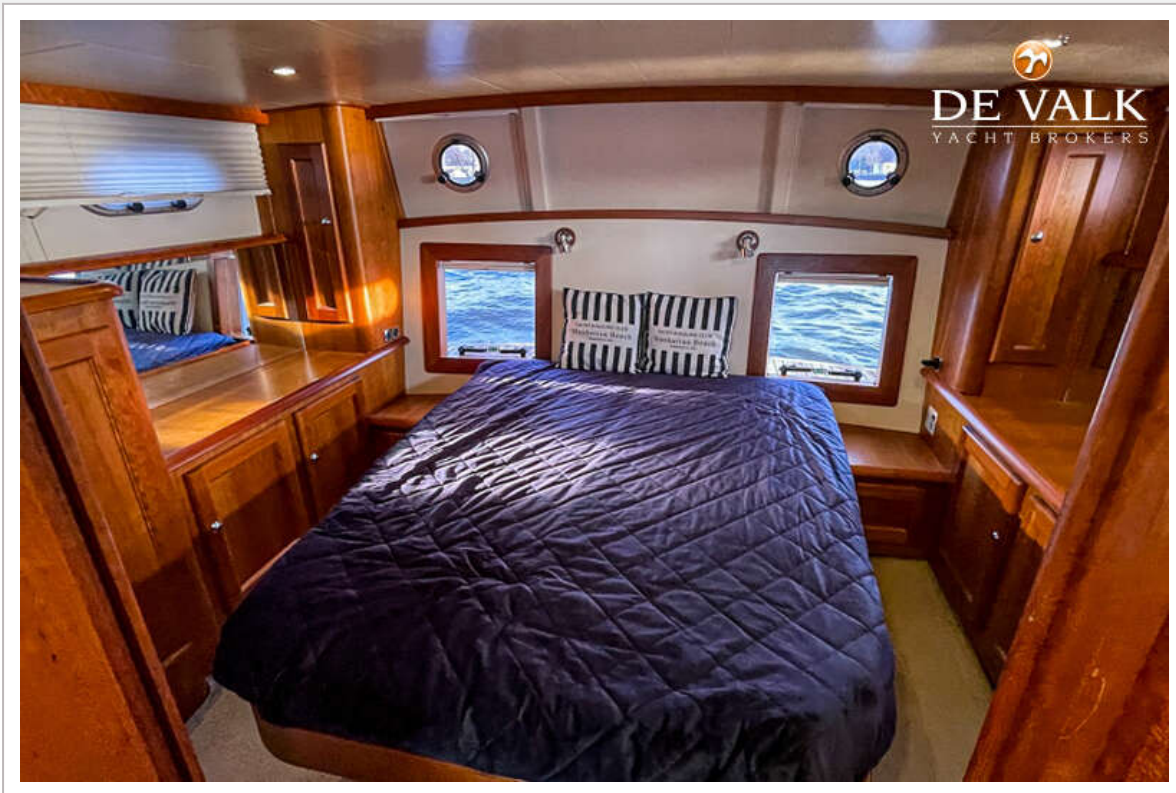
# SMELNE VLET 1200



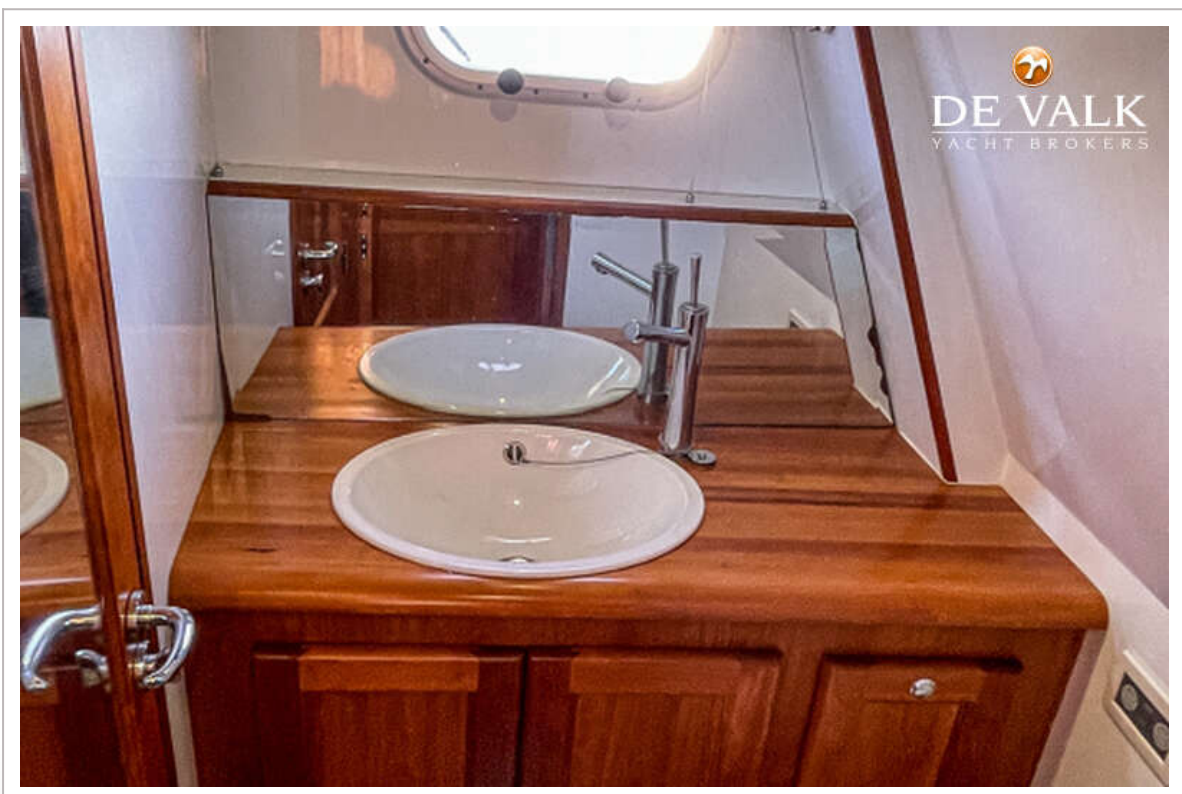
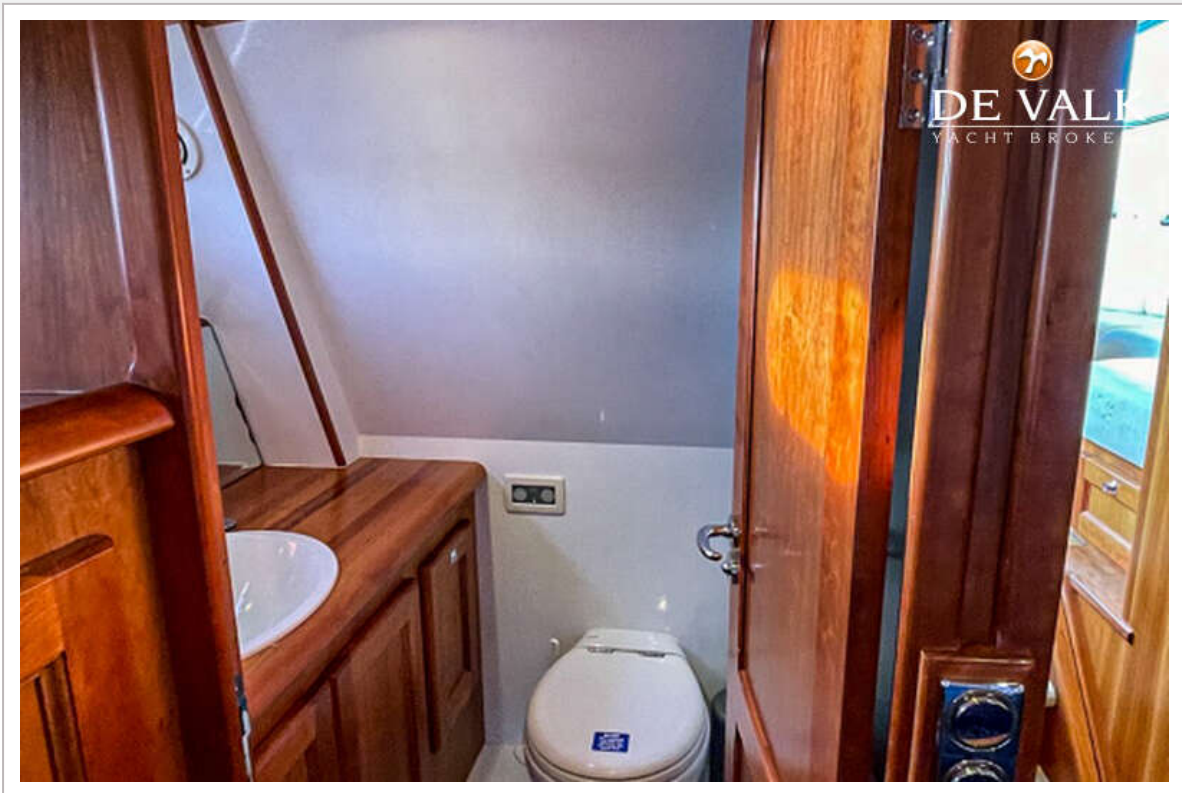
# SMELNE VLET 1200



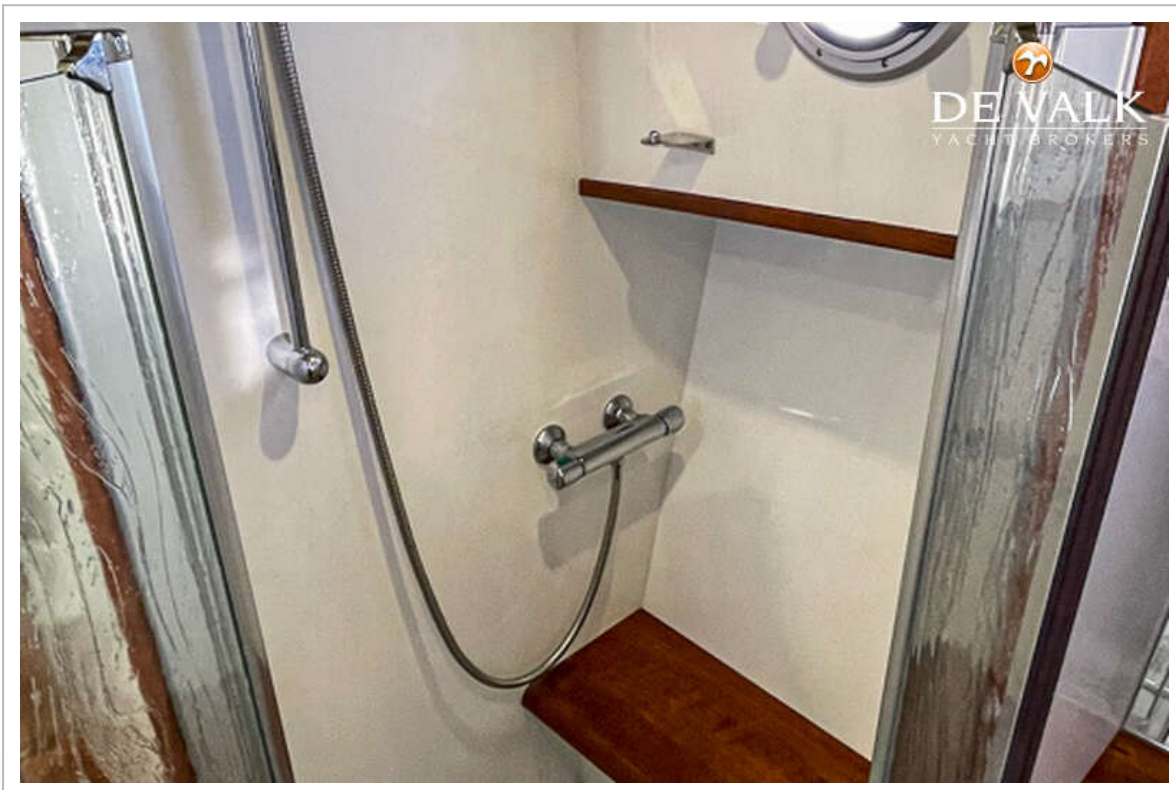
# SMELNE VLET 1200



# SMELNE VLET 1200



# SMELNE VLET 1200



# SMELNE VLET 1200

