



DE VALK
YACHT BROKERS



MMS KRUISER 1485



DE VALK
YACHT BROKERS

MMS KRUISER 1485

BROKER'S COMMENTS

The MMS Kruiser 14.85 "Beau" (1996) is built in the Netherlands. In recent years, the interior has been rebuilt and modified. In the aft is a spacious owner's cabin with a separate shower and toilet, while in the fore section there are two cabins and a toilet. The galley and saloon are on the same level, offering panoramic views all around. Hull and superstructure painted in 2021. "Beau" is easy to manoeuvre thanks to bow and stern thrusters. She is in good condition, well maintained, and is ideal for day trips, relaxing weekends, long-distance cruising, and permanent living aboard.

Jan-Ward van Dantzig

SPECIFICATIONS

Dimensions	14.85 x 4.20 x 1.10 (m)	Builder	Jachtwerf MMS - Groningen
Built	1996	Cabins	3
Material	Steel	Berths	6
Engine(s)	1 x DAF 615 diesel	Hp/Kw	120.00 (hp), 88.32 (kw)
Asking price	€ 159.500 (VAT Paid)	Lying	The Netherlands

CONTACT

Sales office	De Valk Thuishaven	Telephone	+31 35 5829042
Address	Marinaweg 8 (postal address) 1361 AC Almere NL	E-mail	thuishaven@devalk.nl

DISCLAIMER

These particulars are given in good faith as supplied but cannot be guaranteed.



MMS KRUISER 1485

GENERAL

Model	MMS KRUISER 1485
Type	motor yacht
LOA (m)	14,85
Beam (m)	4,20
Draft (m)	1,10
Air draft (m)	4,45
Air draft min (m)	2,70
Headroom (m)	2,00
Year built	1996
Builder	Jachtwerf MMS - Groningen
Country	The Netherlands
Designer	Jachtwerf MMS - Groningen
Displacement (t)	19
CE norm	NA
Hull material	steel
Hull colour	grey Painted (2021)
Hull shape	multi hard chine
Keel type	box keel
Superstructure material	steel
Rubbing strake	steel
Deck material	steel
Deck finish	teak
Superstructure deck finish	teak & white painted / wit geschilderd / weiß lackiert (2021)
Cockpit deck finish	teak (aft deck / achterdek / Achterdeck)
Antifouling (year)	2023
Window frame	aluminium
Window material	glass
Deckhatch	1x Gebo (2022) & 1x Moonlight (Perspex renewed in 2024) with mosquito screens.
Portholes	aluminium Moonlight - some openable / enkele te openen / einige zu öffnen



MMS KRUISER 1485

Insulation	rockwool
Fuel tank (litre)	steel 500 - cleaned / gereinigd / gereinigt (2021)
Fuel tank 2 (litre)	steel 500 - cleaned / gereinigd / gereinigt (2021)
Level indicator (fuel tank)	yes
Freshwater tank (litre)	stainless steel 2 x 500
Level indicator (freshwater)	yes
Blackwater tank (litre)	steel 800
Blackwater tank extraction	deck extraction + pump Electric pump - elektrische pomp / elektrische Pump (2024)
Wheel steering	yes
Outside helm position	hydraulic
More info on paintwork	The hull and superstructure were painted in 2021 with a primer and 3 layers Double Coat (all Van De IJssel)
Extra info	Movable helm seat with white leather.
Extra info	Deck saloon with a sliding window on both sides and a hinged window at the front.
Extra info	Air draft total : 4.45 m - Air draft with sprayhood, cockpit cover and antenna arch down : 3.50 m - Air draft with windows folded down : 2.70 m.

ACCOMMODATION

Cabins	3
Berths	6
Interior	teak Redesigned & renovated / gerenoveerd / renoviert (2021 - 2025)
Floor	teak and holly (2023)
Aft deck	Teak
Deck saloon	Redesigned & renovated / gerenoveerd / renoviert (2021 & 2025)
Headroom saloon (m)	2.05 m
Heating	calorgas ducted hot air Trumatic
Aft Cabin	Redesigned & renovated / gerenoveerd / renoviert (2021)
Opening door to aft deck	yes
Galley	New / nieuw / neu (2025)



MMS KRUISER 1485

Countertop	Duopal (2023/2025)
Sink	(2023)
Cooker	calor gas 3 Burners / pitten / Flamme (2025)
Oven	calor gas & Grill - Duplex (2022)
Gas alarm	Incl. CO tester (2022)
Fridge	Isotherm (2022)
Freezer	small freezer compartment in the refrigerator.
Hot water system	220V + engine 50 Liter Boiler
Water pressure system	electrical
Coffee maker	1 x Krups Nescafe Dolce Gusto & 1 x Philips Cafe Gourmet
Owners cabin	French bed
Bed length (m)	2.00 x 1.60 m - Headroom : 2.00 m
Wardrobe	hanging/drawers/shelves
Bathroom	en suite Redesigned & renewed / vernieuwd / erneuert (2021)
Toilet	en suite (2021) Headroom / Stahoogte / Stehhöhe : 1.75 m
Toilet system	electric (2025)
Wash basin	in the cabin (2021)
Shower	en suite (2021) - Headroom / Stahoogte / Stehhöhe : 1.91 m
Extra info	Mattresses (2021). Grohe Shower. Shower water is collected in a stainless steel tank with an electric pump and a float switch (2021).
Guest cabin 1	v-bed
Bed length (m)	2.05 x 0.80 m & 2.80 x 0.80 m - Headroom : 2.00 m
Wardrobe	shelves
Bathroom	shared Headroom / Stahoogte / Stehhöhe : 2.00 m
Toilet	shared
Toilet system	electric Rheinstrom
Extra info	Mattresses (2021)
Guest cabin 2	double bed New / nieuw / Neu (2025)
Bed length (m)	2.00 x 1.40 m - Headroom : 2.00 m
Wardrobe	shelves
Extra info	Mattresses (2025)



Extra info Ceilings painted and complete interior varnished (2021). New cushions and Off-White Saloon appolstery in the cabins and saloon (2021).

Extra info Luxaflex blinds for the windows in the deck saloon and in the cabin with a double bed.

MACHINERY

No of engines	1
Make	DAF
Type	615
HP	120
kW	88.32
Fuel	diesel
Year installed	1996
Maximum speed (kn)	7
Cruising speed (kn)	6
Consumption (l/hr)	4,5
Engine hours	1090
Drive	shaft
Shaft seal	yes
Engine controls	bowden cable (spare set available / reserve aanwezig/ Reserve vorhanden)
Gearbox	hydraulic
Bowthruster	electric Cupa CP90/24 (2021 - sevised 2023) with remote controle
Sternthruster	electric Cupa (2021)
Exhaust	watercooled
Propeller type	fixed
Propeller blades	4
Propeller shaft material	stainless steel
Shaft lubrication	oilbath
Electric bilge pump	(2023) Jabsco



MMS KRUISER 1485

Electrical installation	12 + 24 + 220 Volt
Generator	silent separator Mastervolt Whisper 8.000
Running hours generator	205
Start battery	2 x 190 Ah Varta (2020)
Service battery	4 x 230 Ah Ecobat AGM DC (2021)
Generator battery	1 x 50 Ah Optima Red Top (2023)
Battery monitor	Victron
Battery charger	(2021)
Inverter	Small 24 - 12 Volt
Battery charger/inverter	Victron Multiplus 24/3000/70 (2021)
Diode battery combiners	yes
Shorepower	with cable New / nieuw / neu (2021)
Extra info	Annual engine maintenance carried out.
Extra info	New fans and insulation in the engine room (2023). Diesel filter with water separator (for engine and generator).
Extra info	Bilge and engine room coated (2021).

NAVIGATION

Electric compass	Raymarine (2021)
Depth sounder	Raymarine (2021)
Log	Raymarine (2021)
Fish finder	Raymarine (2021)
VHF	Icom IC-M330 DSC/AIS (2023)
Rudder angle indicator	Vetus
Plotter/GPS	Raymarine Axiom+7 Multifunctional (2021)
Electronic chart(s)	(2022)
Navigation lights	yes
Searchlight	yes
Extra info	There is a safe on board.

EQUIPMENT



MMS KRUISER 1485

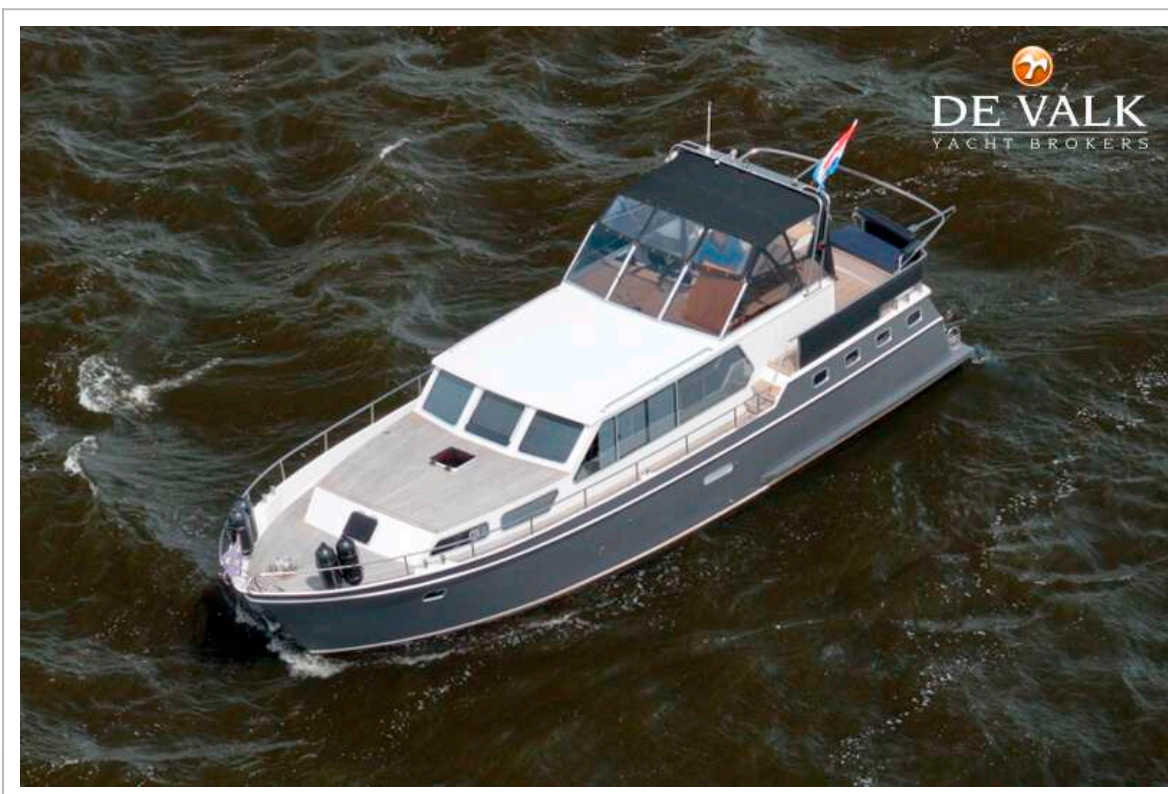
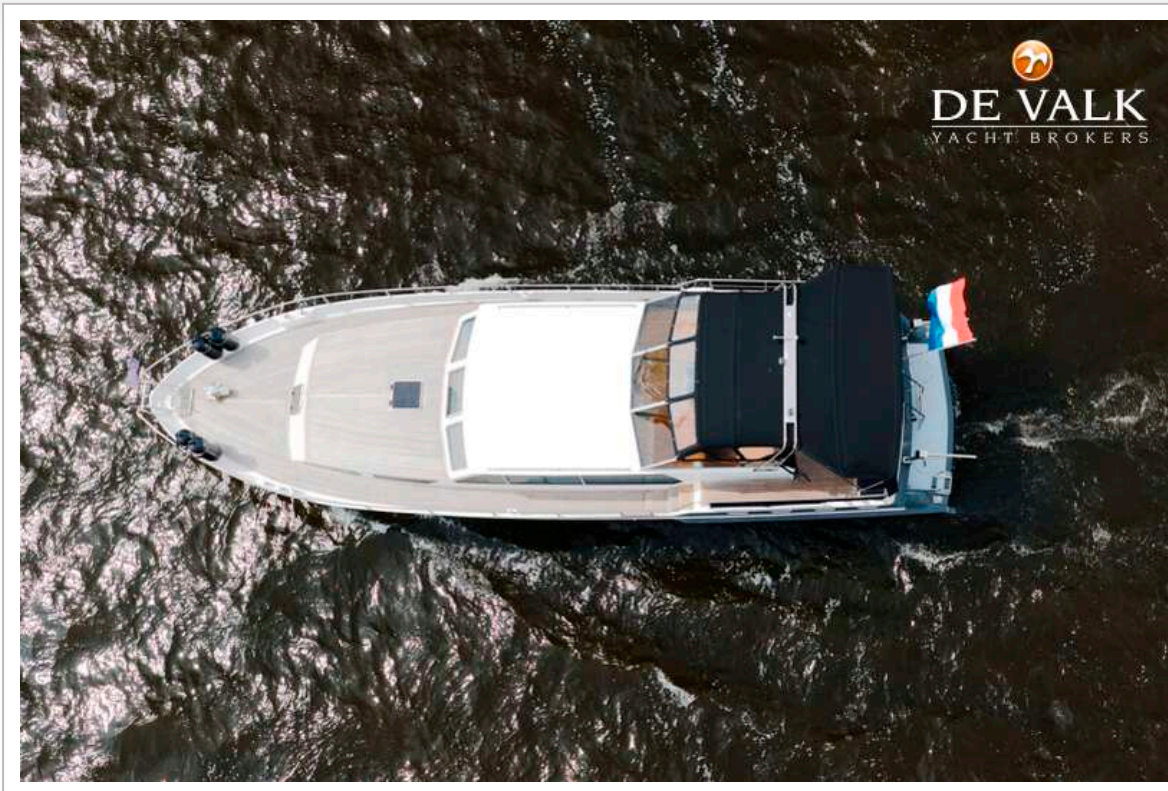
Fixed windscreen	(windows can be folded down)
Sprayhood	(2022) - Headroom : 2.00 m
Cockpit cover	(2022) with removable zippered side and rear panels.
Bimini	(cockpit cover also serves as bimini.)
Cockpit cushions	(2023)
Cockpit table	teak - removable and foldable
Bathing platform	Non-skit paint (2021)
Boarding ladder	stainless steel
Bow ladder	Stainless steel - also to use on both railing openings (2025).
Anchor	Hollex
Anchor chain	25 m
Windlass	electrical Lofrans Tigres 1200 W - 24 V
Deck wash	yes
Davits	stainless steel
Davits controls	manual
Sea railing	stainless steel
Grab rail (superstructure)	stainless steel (2023)
Railing side opening gates	yes
Pushpit	Stainless steel
Pulpit	Stainless steel
Wiper	1 x
Horn	electric
Fenders	yes
Mooring lines	yes
TV	LG TV on an electric lift (2021)
Fire extinguisher	1 x 6 kg powder
Latest extinguisher survey	Needs to be inspected / renewed.
Extra info	2 Double stainless steel fender baskets on bow.
Extra info	Stainless steel flagpole.
Extra info	Freshwater tap on the swim platform.



MMS KRUISER 1485



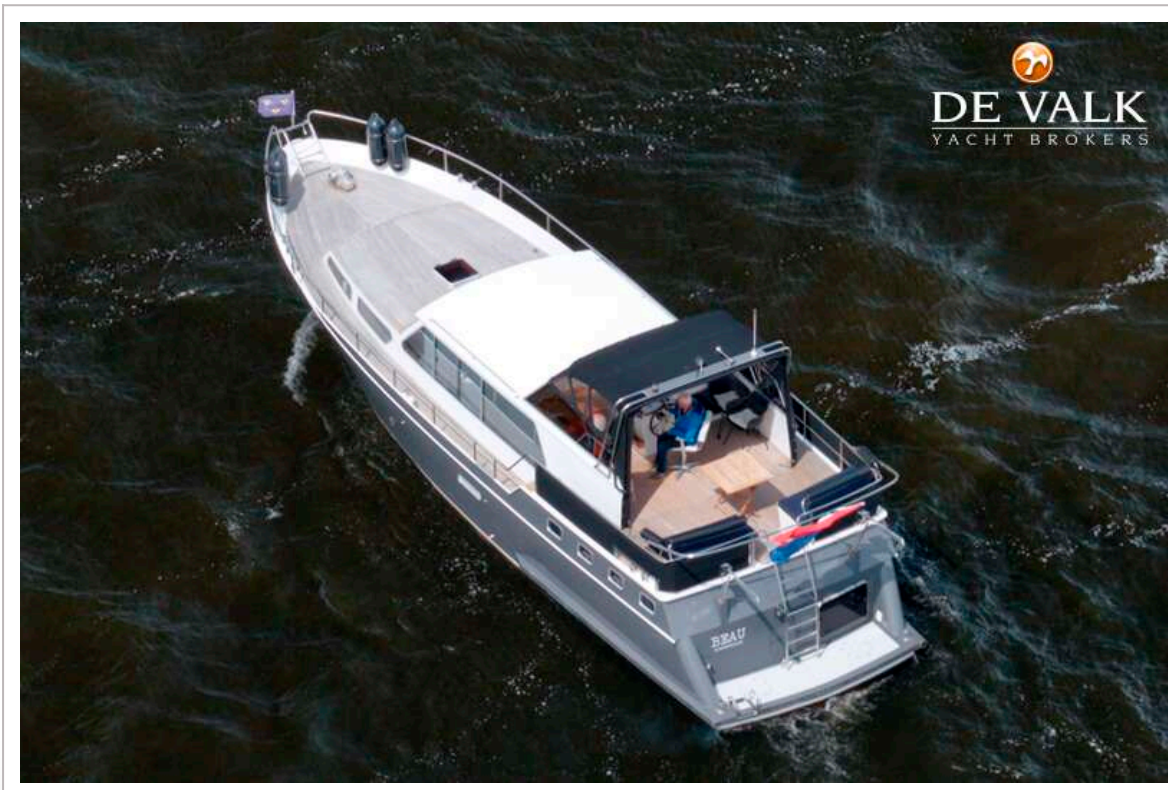
MMS KRUISER 1485



MMS KRUISER 1485



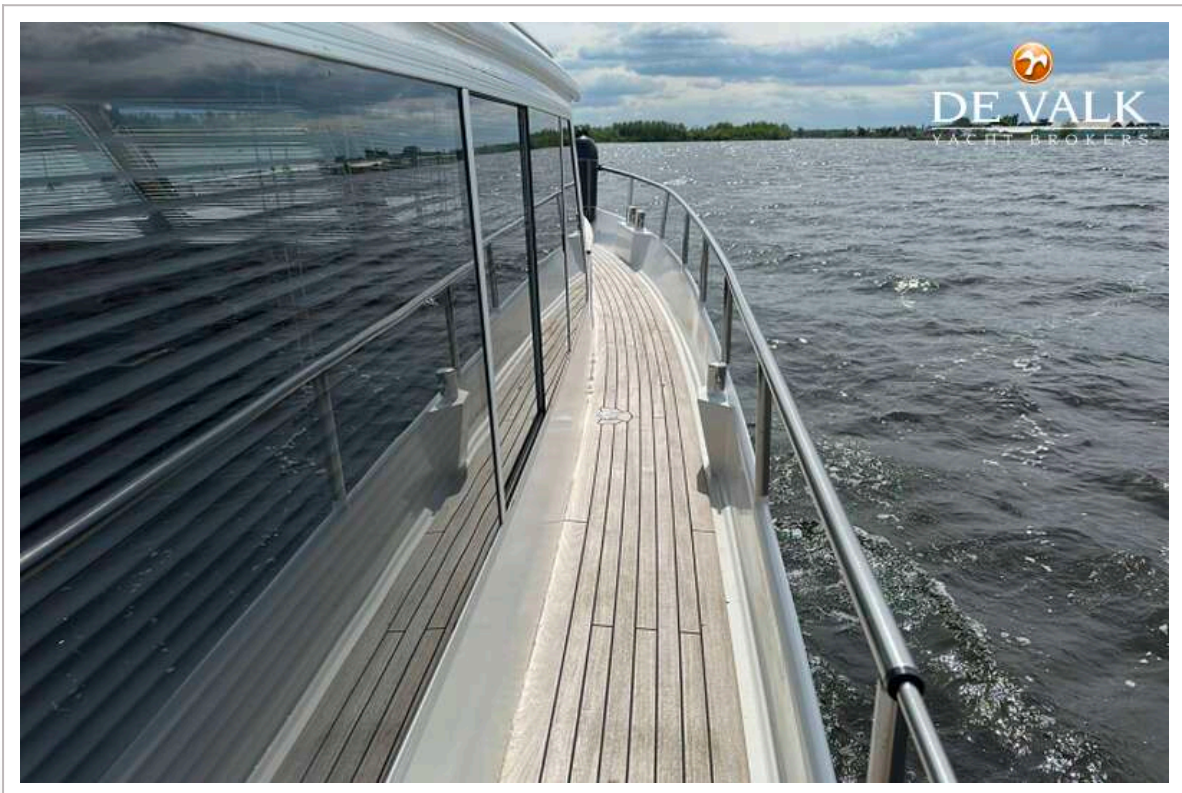
MMS KRUISER 1485



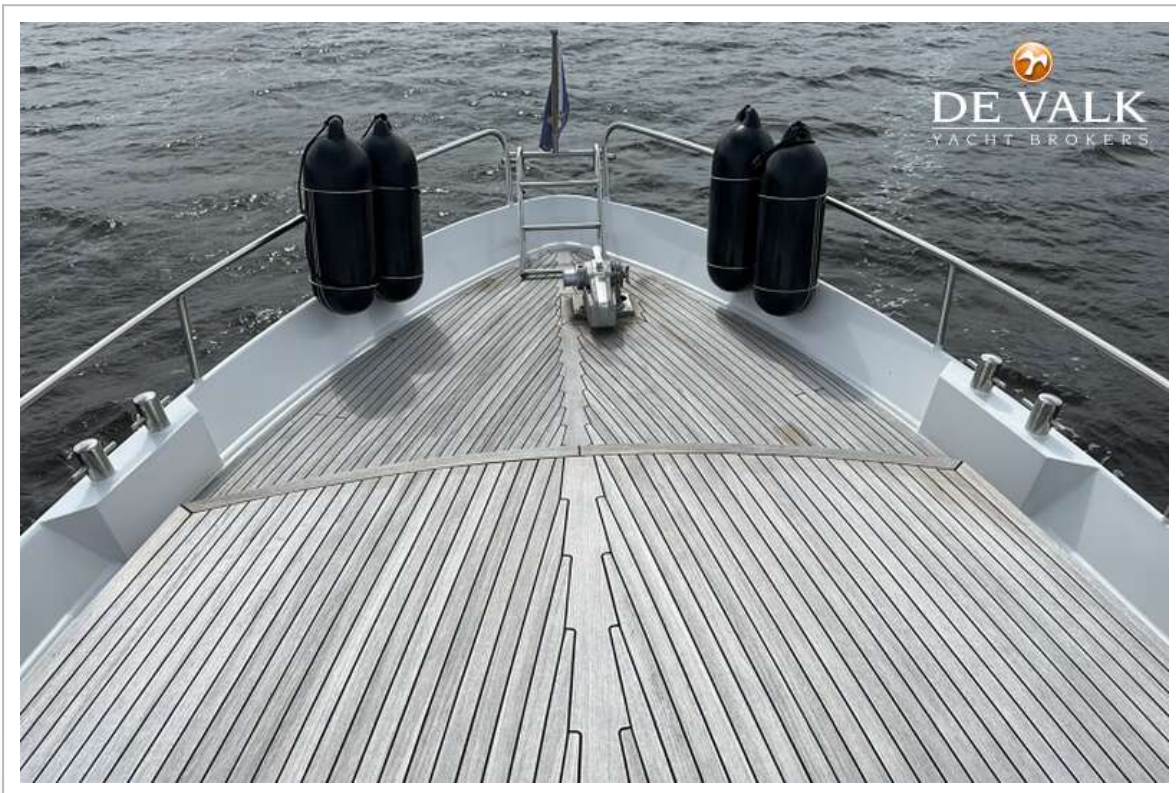
MMS KRUISER 1485



MMS KRUISER 1485



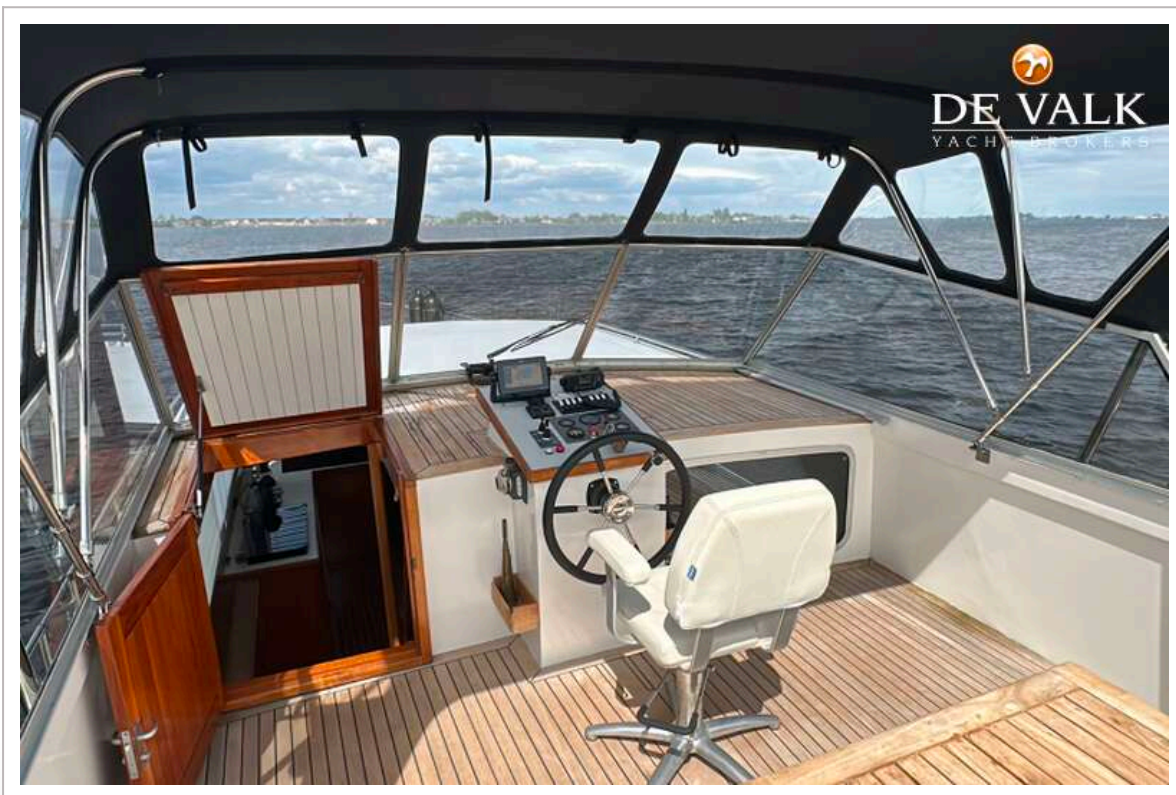
MMS KRUISER 1485



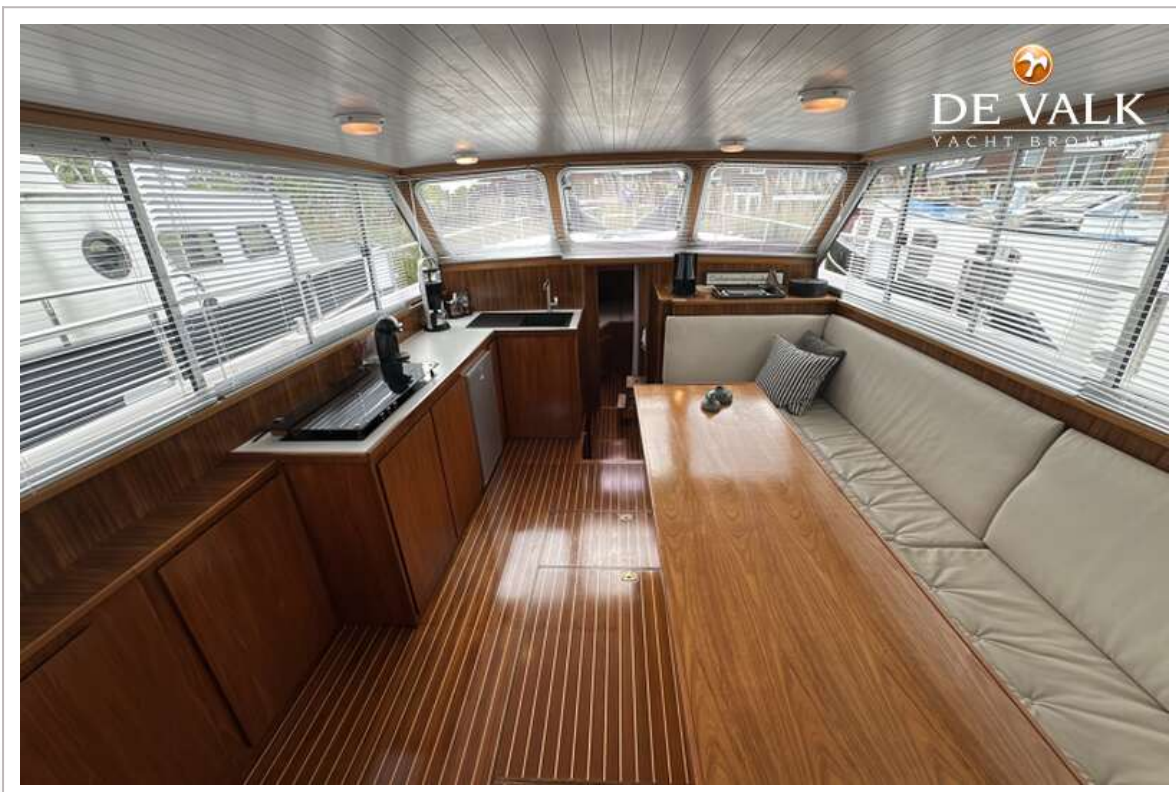
MMS KRUISER 1485

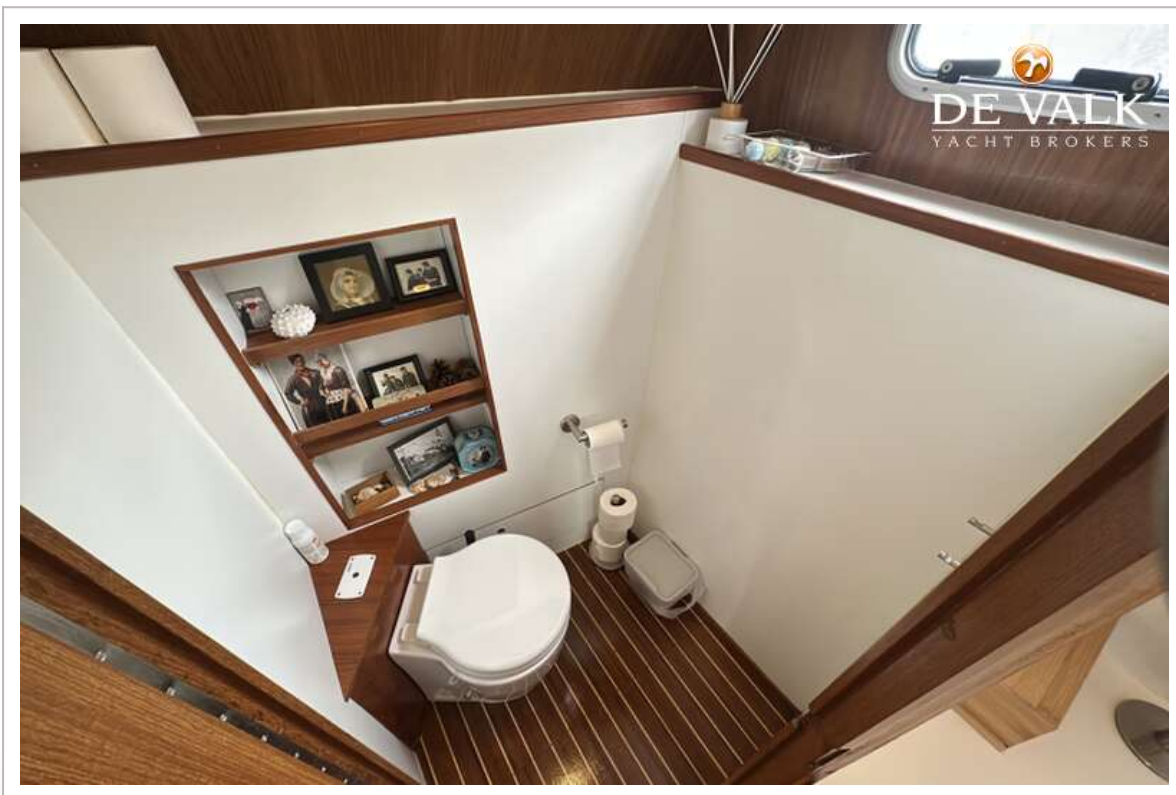


MMS KRUISER 1485



MMS KRUISER 1485





MMS KRUISER 1485

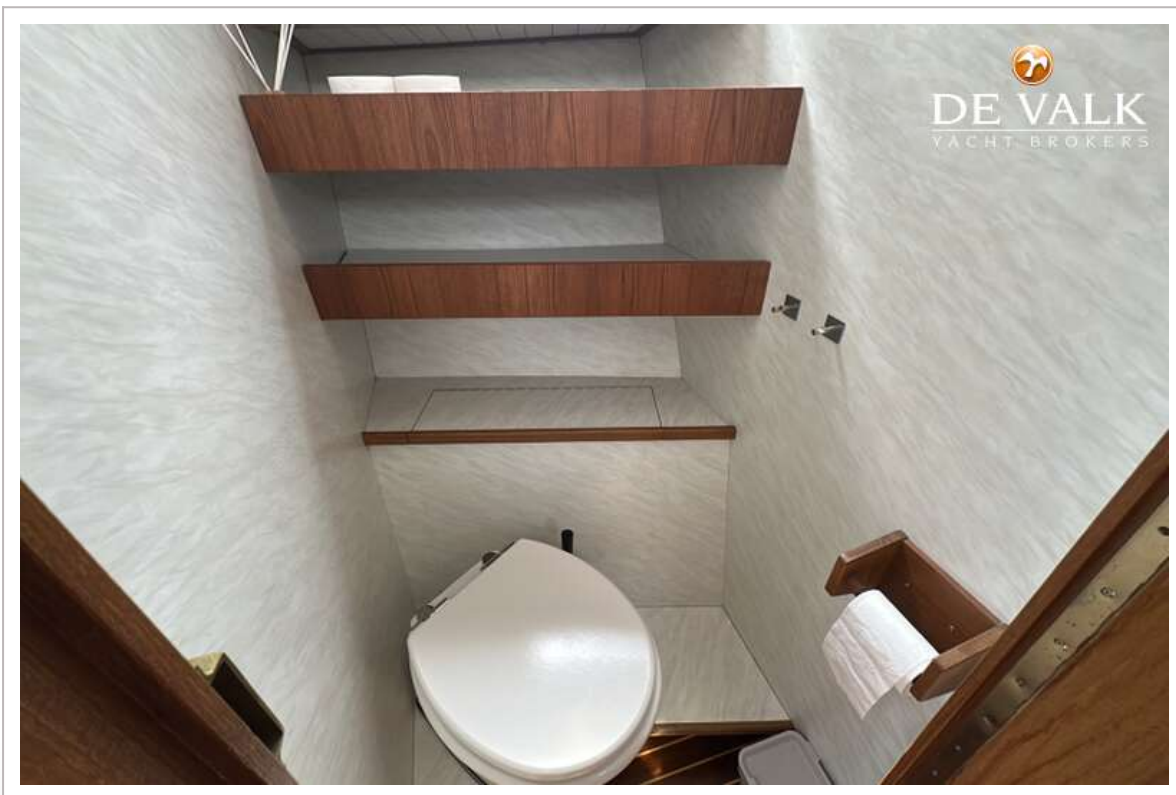
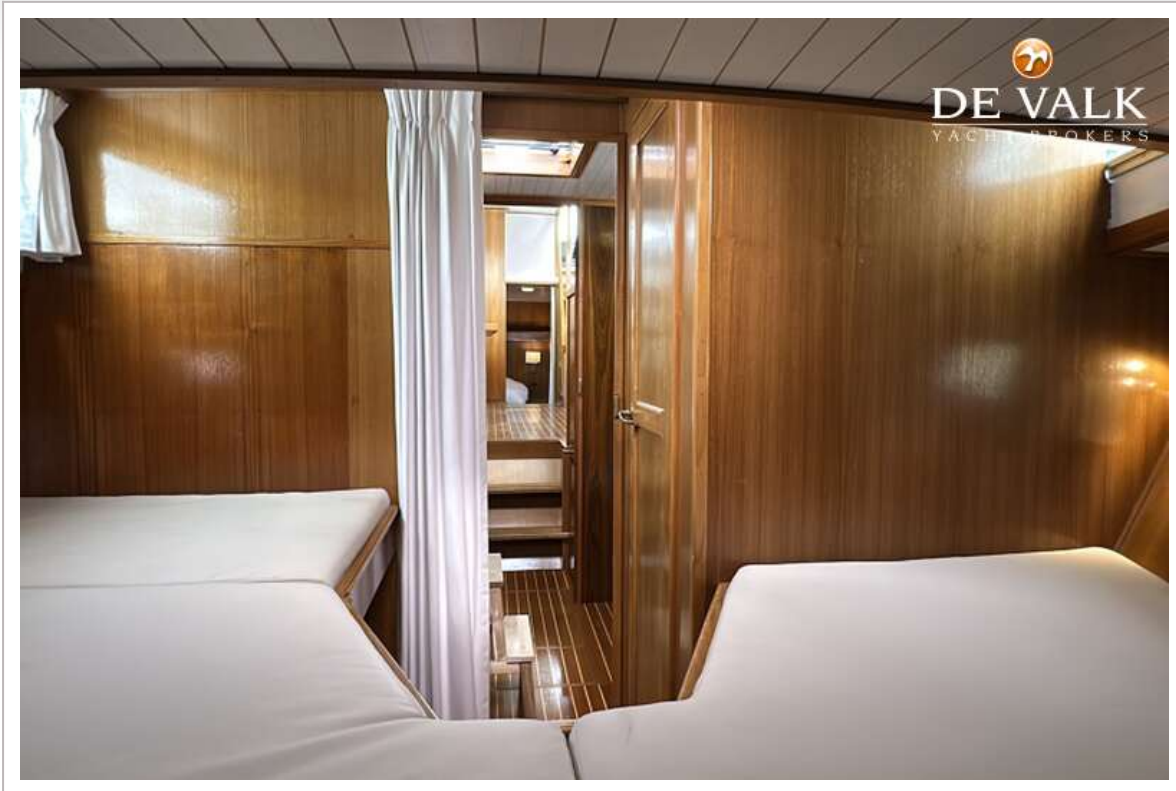




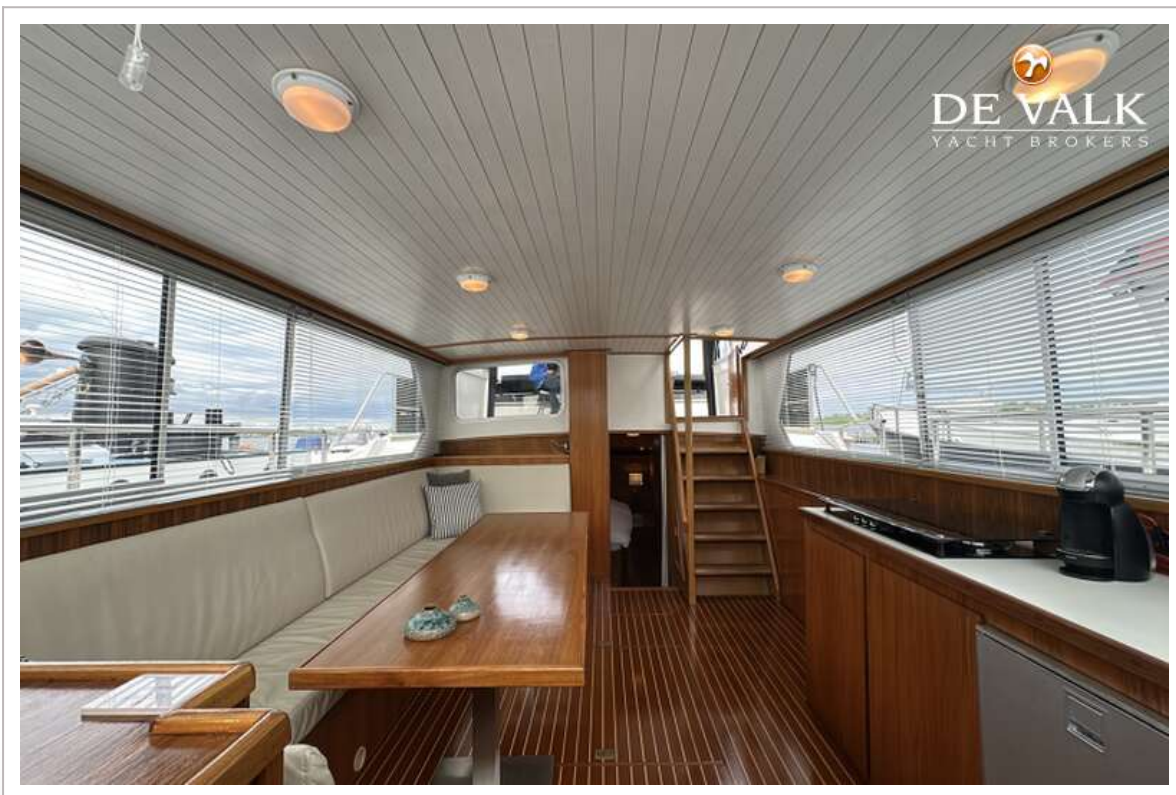
MMS KRUISER 1485







MMS KRUISER 1485



MMS KRUISER 1485



MMS KRUISER 1485

