



DE VALK  
YACHT BROKERS



## ANKER & JENSEN BERMUDIAN KETCH 65



DE VALK  
YACHT BROKERS

# ANKER & JENSEN BERMUDIAN KETCH 65

## BROKER'S COMMENTS

Rarely does a yacht embody history with such timeless grace as Desirée. Commissioned for the Imperial House of Hohenzollern and launched in 1913 by the legendary Anker & Jensen yard, she emerged as an immediate icon. Conceived as a 12-Metre Class yacht "Desirée" unites aristocratic elegance with the pure, uncompromising spirit of racing. From her distinguished royal origins to her celebrated years in Italy, today she represents a rare opportunity to acquire a yacht of genuine historical significance, combining timeless design, proven pedigree and distinctive presence.

*Giovanni Spagnuolo*

## SPECIFICATIONS

<b>Dimensions</b>	19.54 x 3.14 x 3.00 (m)	<b>Builder</b>	ANKER & JENSEN
<b>Built</b>	1912	<b>Cabins</b>	3
<b>Material</b>	Mahogany	<b>Berths</b>	10
<b>Engine(s)</b>	1 x IVECO AIFO 8041M diesel	<b>Hp/Kw</b>	70.00 (hp), 51.52 (kw)
<b>Asking price</b>	€ 250.000 (VAT Paid)	<b>Lying</b>	Italy

## CONTACT

<b>Sales office</b>	De Valk Rome	<b>Telephone</b>	+39 06 65 81221
<b>Address</b>	c/o Nautilus Marina Srl, Via Monte Cadria, 127  00054 Fiumicino Roma  IT	<b>E-mail</b>	rome@devalk.nl

## DISCLAIMER

These particulars are given in good faith as supplied but cannot be guaranteed.



# ANKER & JENSEN BERMUDIAN KETCH 65

## GENERAL

<b>Model</b>	ANKER & JENSEN BERMUDIAN KETCH 65
<b>Type</b>	sailing yacht
<b>LOA (m)</b>	19,54
<b>LWL (m)</b>	11,97
<b>Beam (m)</b>	3,14
<b>Draft (m)</b>	3,00
<b>Year built</b>	1912
<b>Launched</b>	1913
<b>Builder</b>	ANKER & JENSEN
<b>Country</b>	Norway
<b>Designer</b>	Johan Anker
<b>Displacement (t)</b>	25
<b>Hull material</b>	mahogany
<b>Hull colour</b>	white
<b>Hull shape</b>	deep-V
<b>Keel type</b>	long keel
<b>Superstructure material</b>	teak
<b>Deck material</b>	teak
<b>Deck finish</b>	teak
<b>Antifouling (year)</b>	yes
<b>Dorades</b>	4
<b>Fuel tank (litre)</b>	steel 350
<b>Freshwater tank (litre)</b>	steel 200
<b>Wheel steering</b>	mechanical

## ACCOMMODATION

<b>Cabins</b>	3
<b>Berths</b>	10
<b>Crew cabin</b>	yes
<b>Crew berths</b>	2



# ANKER & JENSEN BERMUDIAN KETCH 65

Interior	mahogany Mohogany
Floor	wood Mohogany
Doghhouse	yes
Saloon	yes
Chart table	yes
Dinette to convert into berth	4
Convertible berth	yes
Galley	yes
Countertop	wood
Sink	stainless steel
Cooker	calor gas 2 cooker
Fridge	12v
Water pressure system	electrical
Bathroom	separate 2
Toilet	separate
Toilet system	manual
Toilet	yes

## MACHINERY

No of engines	1
Make	IVECO AIFO
Type	8041M
HP	70
kW	51.52
Fuel	diesel
Engine hours	980
Engine cooling system	seawater
Shaft seal	yes
Engine controls	bowden cable
Propeller type	fixed
Propeller blades	2



# ANKER & JENSEN BERMUDIAN KETCH 65

Propeller shaft material	stainless steel
Manual bilge pump	yes
Electric bilge pump	yes

## NAVIGATION

Compass	yes
Depth sounder	RAYMARINE ST60
Log	RAYMARINE ST60
Windset	RAYMARINE
VHF	yes
Autopilot	yes

## EQUIPMENT

Anchor	yes
Anchor chain	yes
Windlass	electrical
Capstan	Electrical
Pushpit	yes
Pulpit	yes
Radar reflector	yes
Fenders	yes
Mooring lines	yes

## RIGGING

Rigging	ketch-cutter
Standing rigging	wire
Material mast	wood
Keel stepped mast	yes
Mainsail	yes
Mizzen	yes



<b>Jib</b>	yes
<b>Cutter jib</b>	yes
<b>Gennaker</b>	yes
<b>Yankee</b>	yes
<b>Reefing System</b>	yes
<b>Primary sheet winch</b>	BARLOW 3
<b>Secondary sheet winch</b>	BARIENT 2
<b>Halyard winches</b>	yes
<b>Multifunctional winches</b>	1



# ANKER & JENSEN BERMUDIAN KETCH 65



# ANKER & JENSEN BERMUDIAN KETCH 65

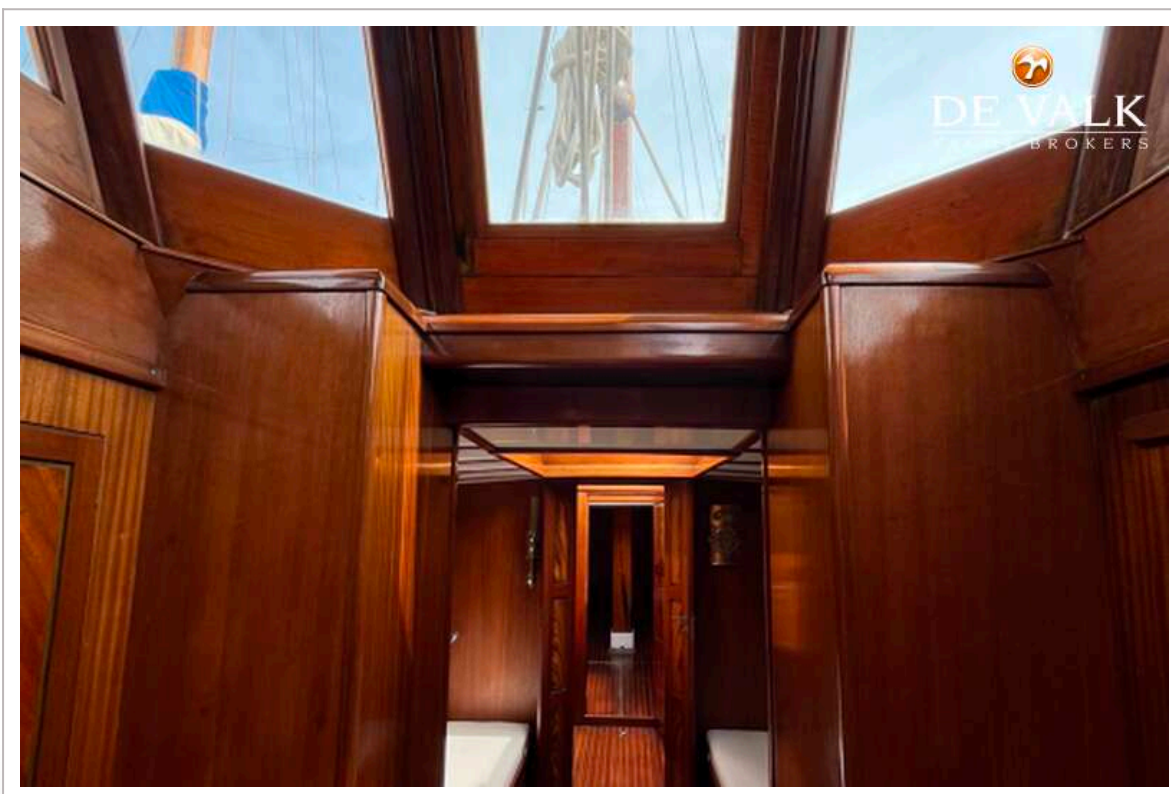
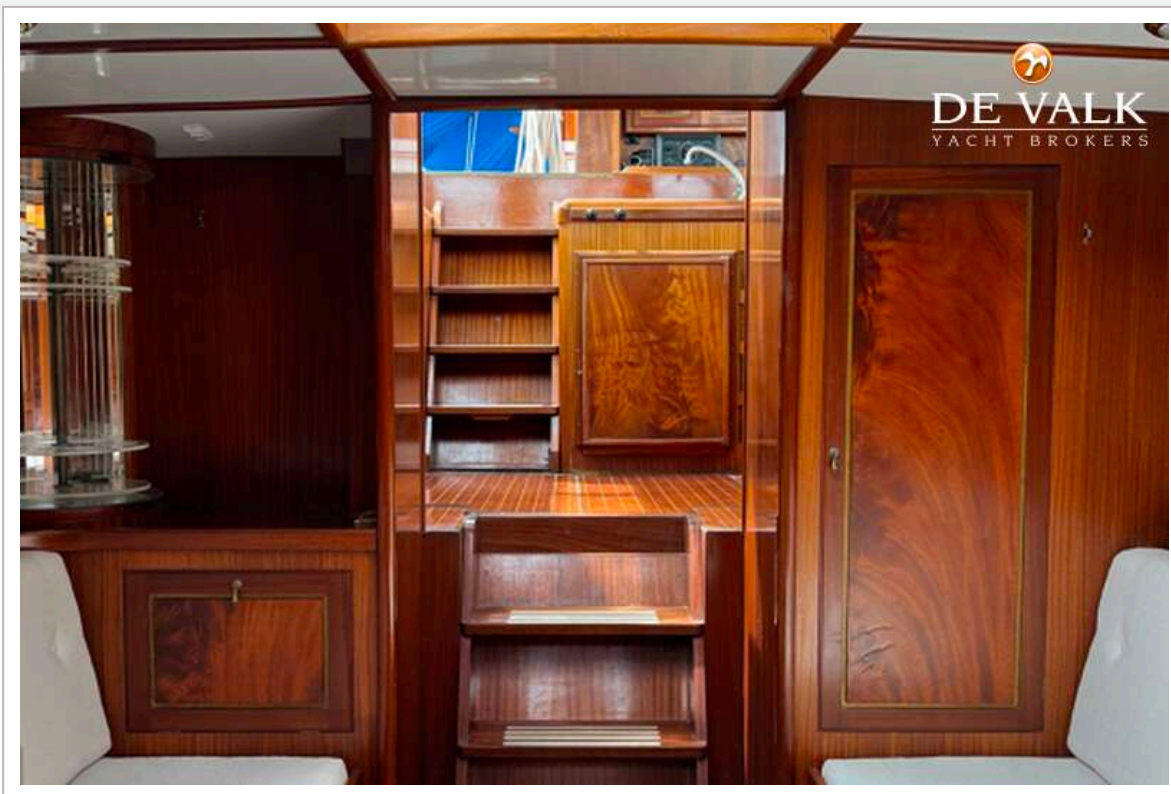




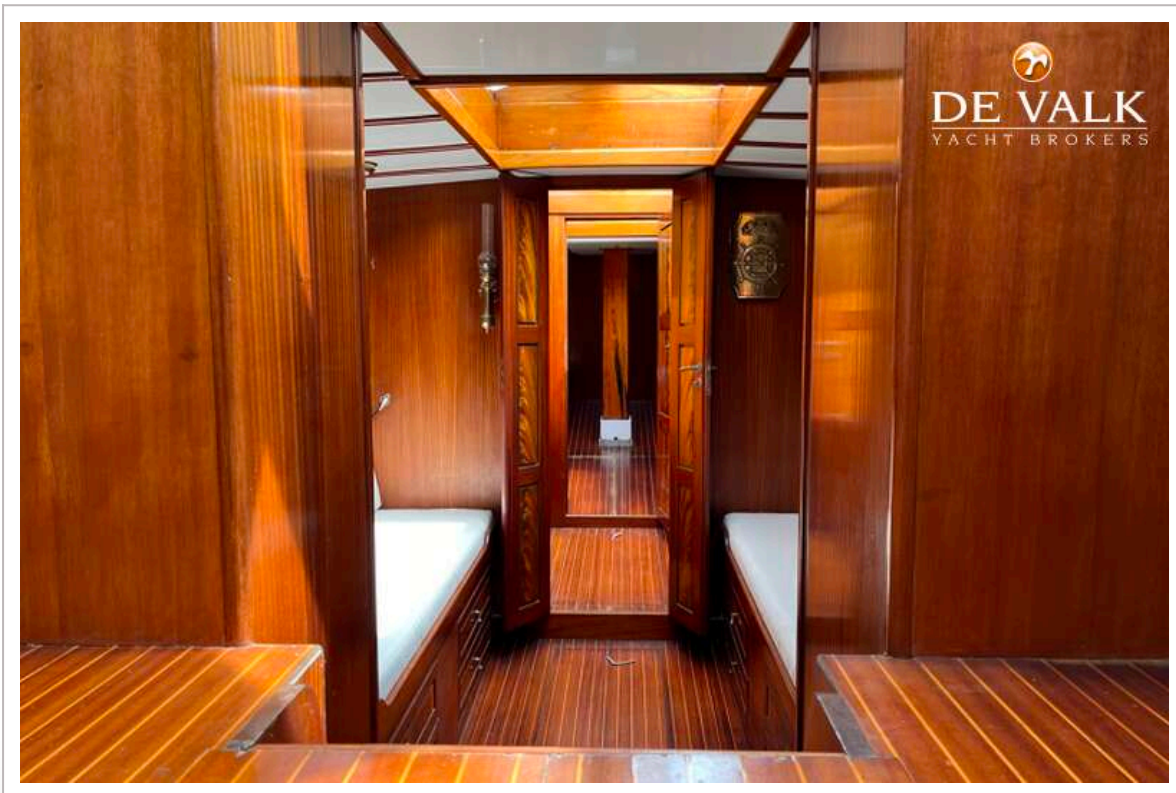
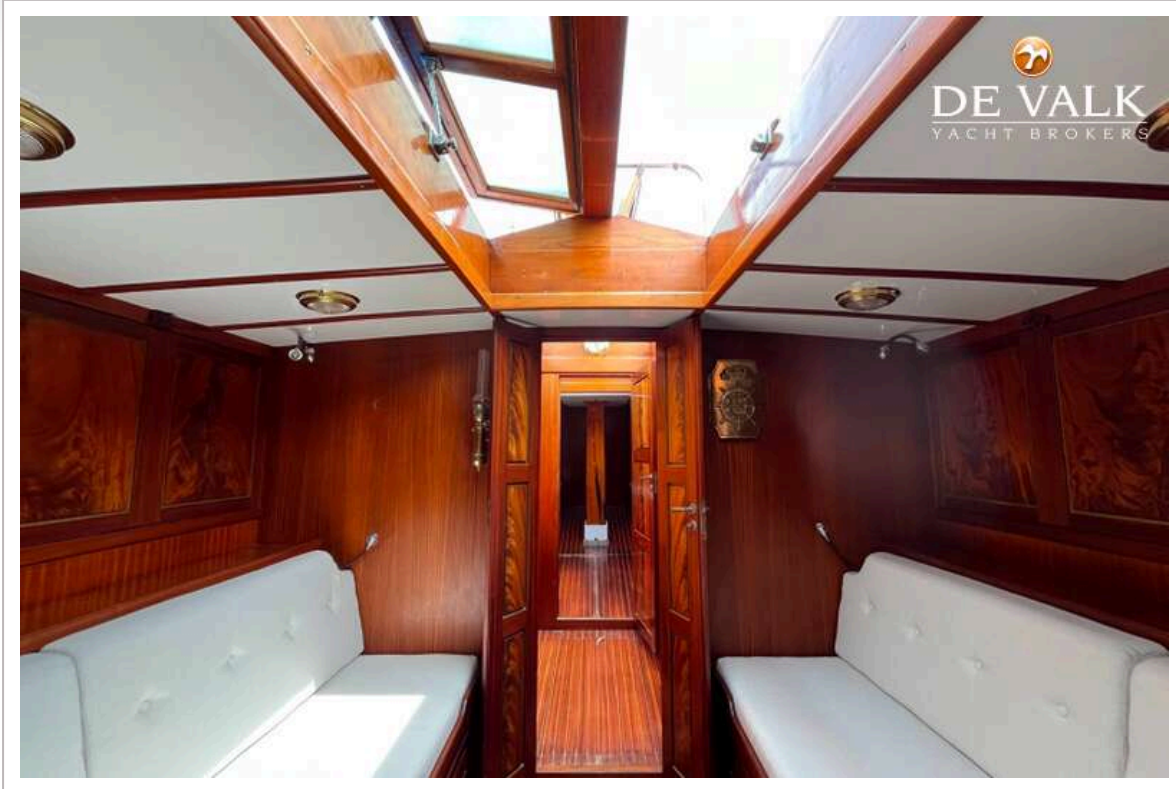
# ANKER & JENSEN BERMUDIAN KETCH 65



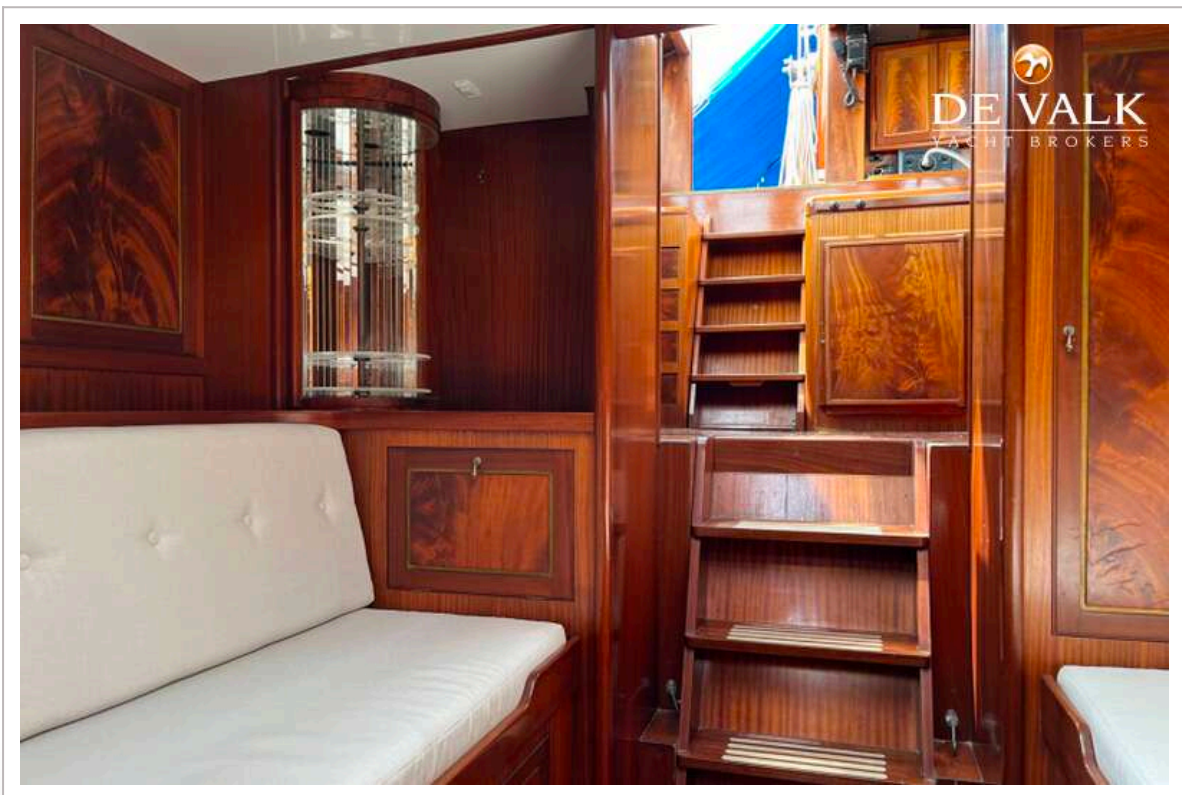
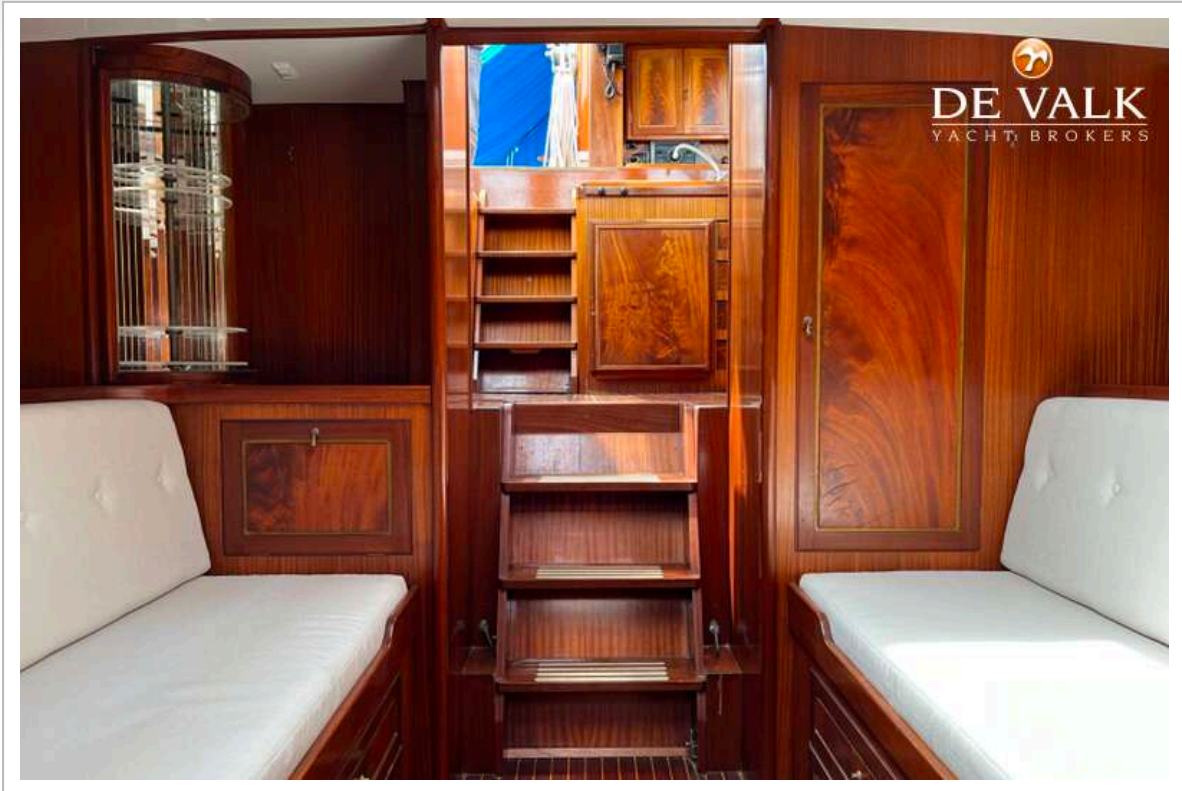
# ANKER & JENSEN BERMUDIAN KETCH 65



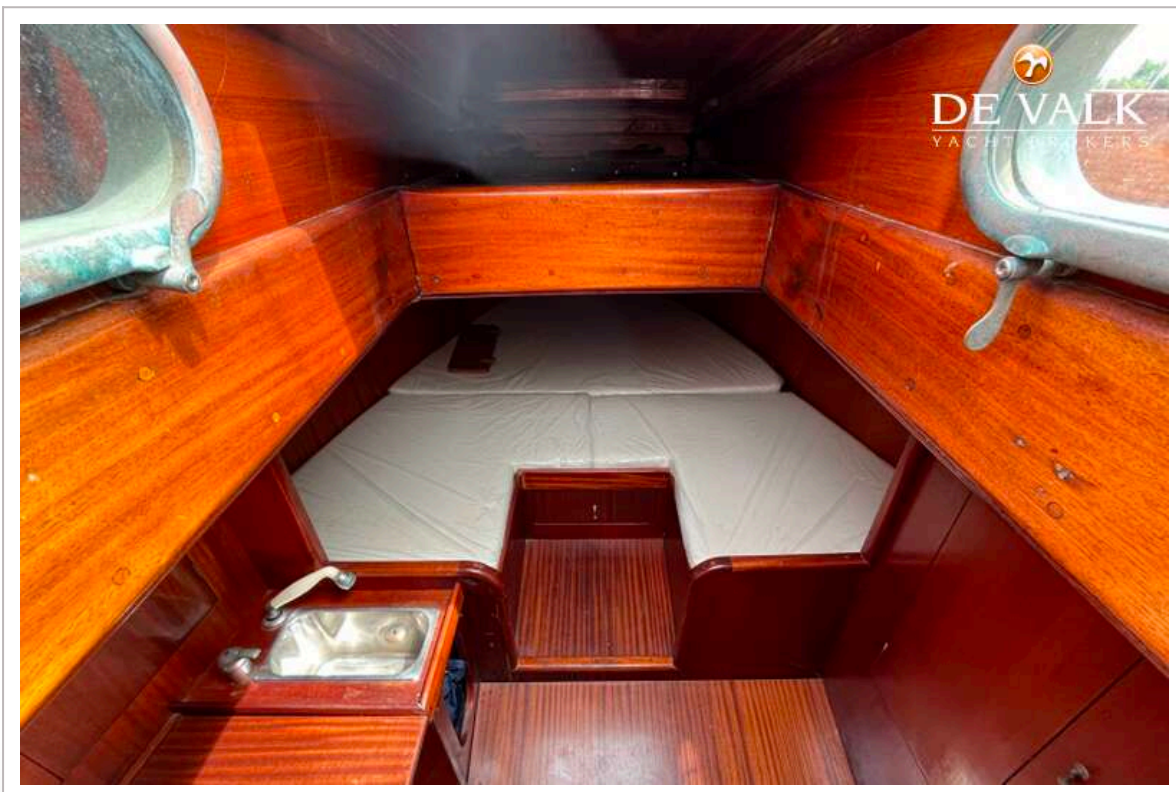
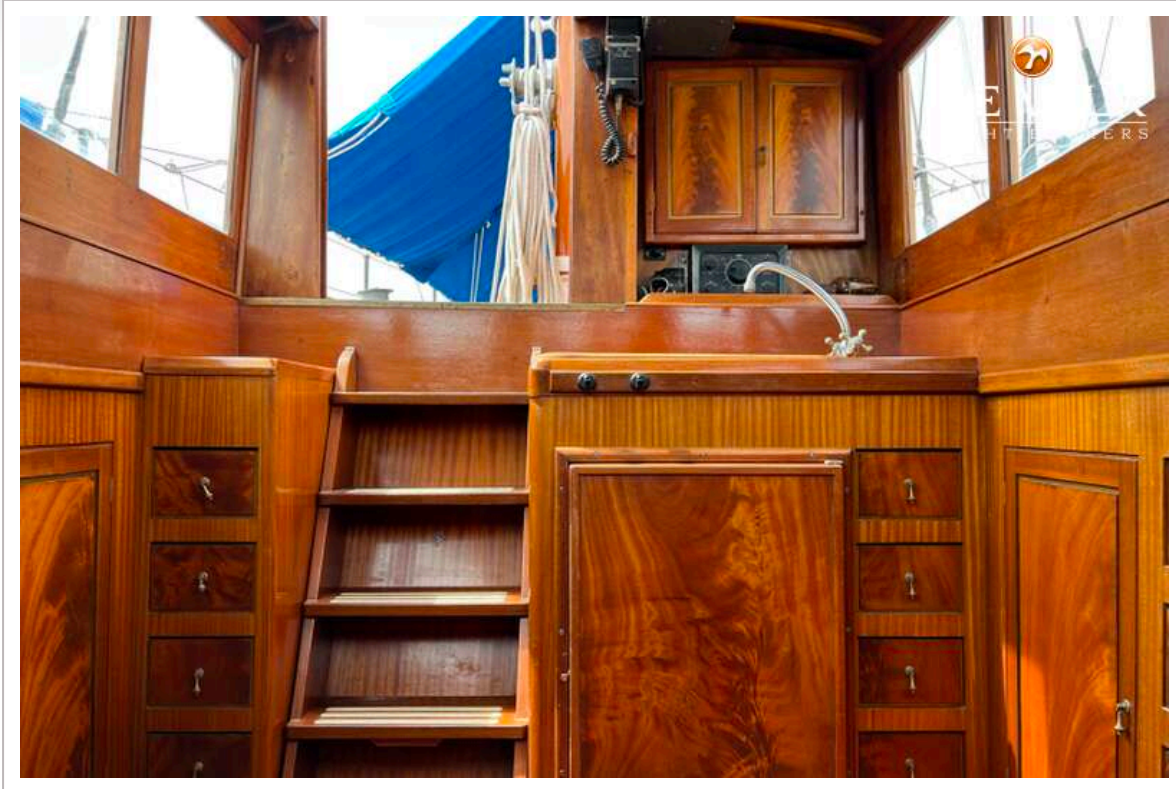
# ANKER & JENSEN BERMUDIAN KETCH 65



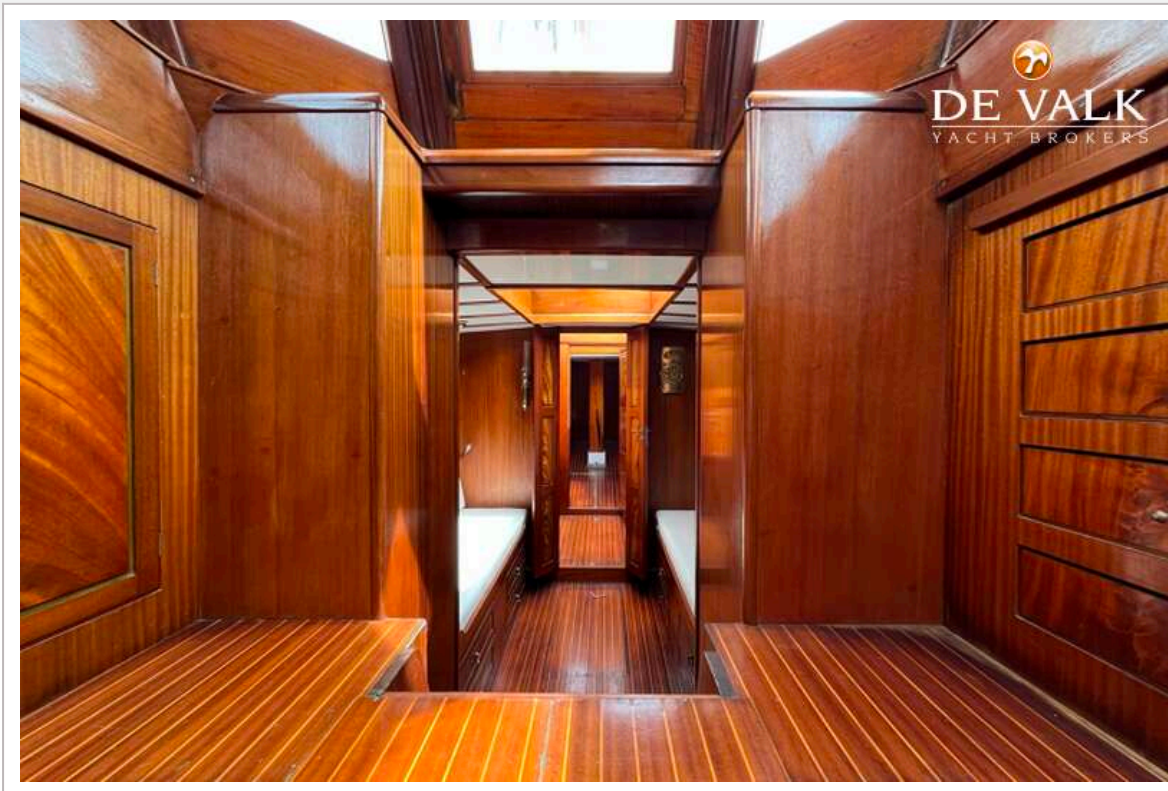
# ANKER & JENSEN BERMUDIAN KETCH 65

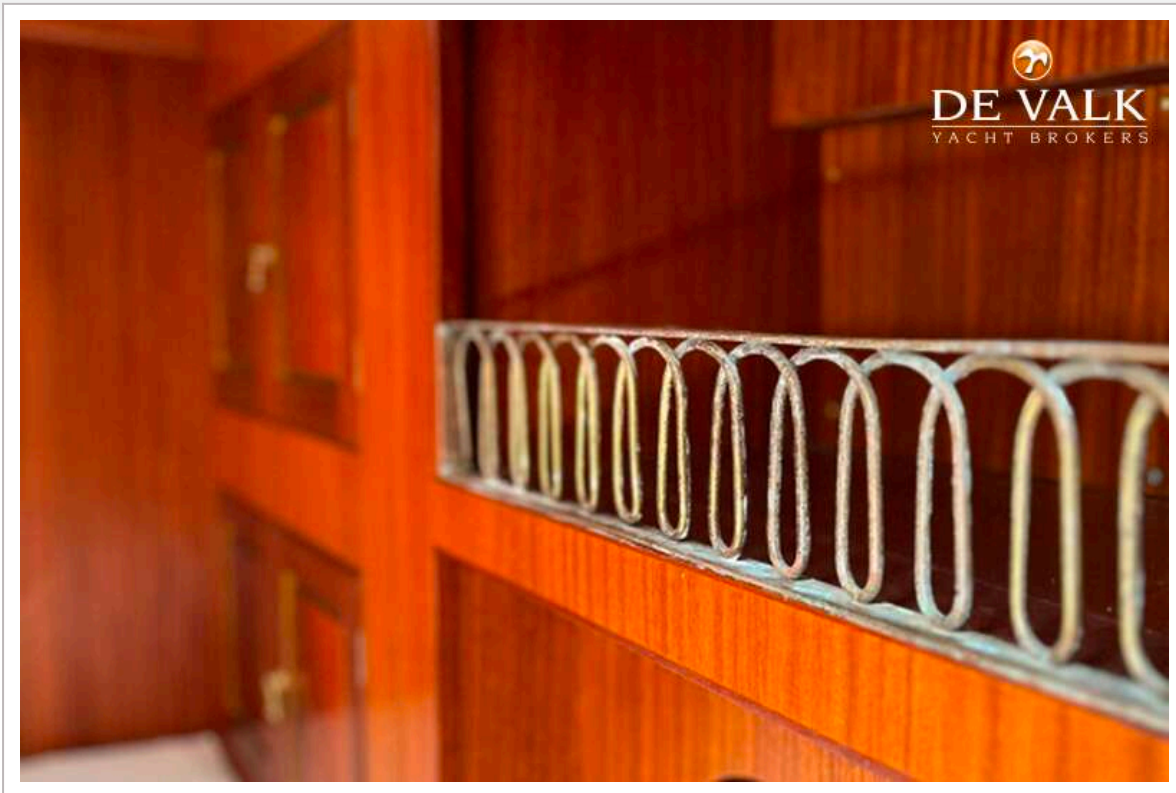


# ANKER & JENSEN BERMUDIAN KETCH 65



# ANKER & JENSEN BERMUDIAN KETCH 65





# ANKER & JENSEN BERMUDIAN KETCH 65

