



DE VALK
YACHT BROKERS



PRESTIGE 550 FLYBRIDGE



DE VALK
YACHT BROKERS

PRESTIGE 550 FLYBRIDGE

BROKER'S COMMENTS

This 2015 Prestige 550 Flybridge combines luxury, performance and comfort at the highest level. Powered by twin Cummins QSC 8.3 engines of 600 hp each, equipped with Zeus Pods and Skyhook positioning, she offers outstanding handling and manoeuvrability. On board, she features three spacious guest cabins, a crew cabin, Kabola central heating, tropical air conditioning, a hydraulic bathing platform, Opacmare hydraulic gangway and a fully equipped flybridge. With only 952 engine hours, this yacht has been exceptionally well maintained. The yacht can be viewed by appointment.

Sjoerd Paddenburg

SPECIFICATIONS

Dimensions	17.92 x 4.79 x 1.17 (m)	Builder	Prestige Yachts
Built	2015	Cabins	3
Material	GRP	Berths	6
Engine(s)	2 x Cummins QSC 8.3 diesel	Hp/Kw	2 x 600.00 (hp), 441.60 (kw)
Asking price	€ 695.000 (VAT Paid)	Lying	elsewhere / Not at sales office

CONTACT

Sales office	De Valk Loosdrecht B.V.	Telephone	+31 (0)35 582 90 30
Address	't Breukeleveense Meentje 6 1231LM Loosdrecht / Wijdmeren NL	E-mail	loosdrecht@devalk.nl

DISCLAIMER

These particulars are given in good faith as supplied but cannot be guaranteed.



PRESTIGE 550 FLYBRIDGE

GENERAL

Model	PRESTIGE 550 FLYBRIDGE
Type	motor yacht
LOA (m)	17,92
LWL (m)	16,06
Beam (m)	4,79
Draft (m)	1,17
Air draft (m)	5,90
Year built	2015
Builder	Prestige Yachts
Country	France
Designer	J&J Concepts Prestige Engineering
Displacement (t)	17,7
CE norm	B
Hull material	GRP
Hull colour	white
Hull shape	deep-V
Superstructure material	GRP
Rubbing strake	stainless steel
Deck material	steel
Deck finish	non-skid moulded in
Superstructure deck finish	Teak on flybridge
Cockpit deck finish	teak
Window frame	stainless steel
Window material	glass
Deckhatch	1x
Portholes	With mosquito screens
Flybridge	Teak floor
Flybridge cover	Wheel station bench + sundeck and flying bridge saloon
Flybridge suncover	Bimini on flying bridge Sunbrella Taupe
Fuel tank (litre)	stainless steel 1100



PRESTIGE 550 FLYBRIDGE

Fuel tank 2 (litre)	stainless steel 1100
Level indicator (fuel tank)	Digital
Freshwater tank (litre)	polyethylene 800
Level indicator (freshwater)	yes
Blackwater tank (litre)	polyethylene 170
Level indicator (blackwater)	yes
Blackwater tank extraction	pump
Wheel steering	electric
Inside helm position	yes
Flybridge helm position	yes
Extra info	Sub-marin hull lights
Extra info	Connector for direct water supply from pontoon



PRESTIGE 550 FLYBRIDGE

Extra info

Prestige 550 Flybridge – Ready for the New Boating Season The Prestige 550 Flybridge is renowned for her elegant lines, high-quality finish, and excellent cruising performance. Powered by twin Cummins QSC 8.3 engines (600 hp each) with Zeus pod drives and the Skyhook positioning system, she offers effortless manoeuvring and confident handling in all conditions. The layout has been designed with maximum privacy in mind: the owner's stateroom features its own private entrance, while the VIP and guest cabins are accessed via a separate companionway. The saloon is surrounded by large panoramic windows, allowing abundant natural light to flood the interior and creating a spacious, luxurious atmosphere. This makes the 550 Flybridge not only an ideal yacht for extended cruising and holidays, but also highly suitable for extended stays or use as a comfortable summer residence. The flybridge is generously laid out and fully equipped for relaxing days on the water, featuring sun loungers, a comfortable seating area, a full Bimini top, refrigerator, wet bar with grill, and sink. It provides the perfect setting for enjoyable summer days and long, warm evenings with family and friends. The yacht has spent most of her life in freshwater and has been meticulously maintained by authorised dealers. In 2026, the underwater hull received a complete new three-layer antifouling system, while the engines, generator, and Kabola central heating system were professionally serviced. The gelcoat and teak caulking have also been renewed, giving the yacht a near-new appearance. She is fully prepared for the upcoming boating season and ready for immediate enjoyment. An optional berth in Huizen is available for takeover.

ACCOMMODATION

Cabins	3
Berths	6
Crew cabin	yes
Interior	birch
Floor	Wooden floor in saloon + carpet
Saloon	Deluxe electrical saloon table
Heating	central heating Kabola KB40
Air-conditioning	single cycle airco Tropical air conditioning system 84000 btu



PRESTIGE 550 FLYBRIDGE

Sliding door to aft deck	yes
Galley	yes
Countertop	corian
Sink	stainless steel
Cooker	induction Bosch
Extractor	yes
Microwave/oven combi	Whirlpool
Fridge	Vitrifrigo inside galley and fridge at flybridge
Freezer	yes
Wine cooler	Liebherr
Hot water system	220V
Water pressure system	electrical
Owners cabin	double bed Separate entrance
Wardrobe	hanging and drawers Inloopkast eigenaarshut
Bathroom	en suite
Toilet	en suite
Toilet system	electric Planus
Wash basin	in the bathroom
Shower	en suite
Guest cabin 1	French bed
Wardrobe	hanging and drawers
Bathroom	en suite
Toilet	en suite
Toilet system	electric Planus
Wash basin	in the bathroom
Shower	en suite
Guest cabin 2	twin single
Wardrobe	hanging and drawers
Extra info	Upholstery Mediterraneo old white
Crew cabin(s)	yes
Bathroom (crew)	yes
Toilet (crew)	yes



PRESTIGE 550 FLYBRIDGE

Toilet system	electric Planus
Wash basin	yes
Shower (crew)	yes
Extra info	Crew cabin with airconditioning
Washing machine/dryer combi	Candy washing (6kg) + dryer (4kg)
Flybridge	yes
Wet bar	Sink, grille and fridge
Extra info	Electric windows both sides saloon - led lightning

MACHINERY

No of engines	2
Make	Cummins
Type	QSC 8.3
HP	600
kW	441.60
Fuel	diesel
Maximum speed (kn)	30
Cruising speed (kn)	24
Engine hours	952
Engine cooling system	freshwater heat exchanger
Drive	Zeus Pod
Engine controls	electrical Cummins
Gearbox	hydraulic
Bowthruster	electric 11 kW
Exhaust	watercooled
Propeller type	fixed
Propeller blades	yes
Propeller shaft material	stainless steel
Shaft lubrication	water
Manual bilge pump	Whale
Electric bilge pump	3x



PRESTIGE 550 FLYBRIDGE

Bilge alarm	yes
Electrical installation	24V/220V
Generator	wet exhaust Cummins Onan 17.5 KW
Start battery	4x 12V Optima Blue Top
Service battery	8x 105 Ah (replaced 2025)
Generator battery	1x 12V 50Ah
Bowthruster battery	6x 12V
Shorepower	with cable
Auto positioning system	Mercury Skyhook
Trimtabs	yes

NAVIGATION

Compass	Plastimo
Compass on flybridge	Plastimo
Depth sounder/log	Raymarine
VHF	260 Raymarine VHF dual station
Autopilot	Raymarine
Rudder angle indicator	Raymarine
Radar	Raymarine digital radar
GPS	2 multifunction E125 screens + 1 E125 screen on flybridge
Plotter	Raymarine i70
Wifi antenna	yes
AIS transponder	yes
Camera	Reverse cam & monitoring cam in engine room Raymarine
Navigation lights	yes

EQUIPMENT

Cockpit cover	yes
Bimini	Front deck bimini Sunbrella Taupe
Sun awning	Retractable electric
Window cover	yes



PRESTIGE 550 FLYBRIDGE

Cockpit cushions	yes
Cockpit table	yes
Bathing platform	Hydraulic platform tender lift (360 kg max load capacity)
Boarding ladder	stainless steel
Transom door	yes
Gangway	Opacmare hydraulic gangway (200 kg load capacity)
Deck shower	Hot and cold water
Anchor	yes
Anchor chain	yes
Chain counter	Quick
Windlass	electrical
Capstan	Electric starboard
Deck wash	Electric sea pump (fresh & salt water)
Sea railing	stainless steel
Grab rail (superstructure)	stainless steel
Pulpit	Fender storage on forward pulpit
Wiper	2x
Horn	air pressure
Fenders	yes
Mooring lines	yes
TV	2 x 32" Samsung + 1x 43" Samsung
TV receiver	yes
Surround Sound System	Fusion MS-AV755
Cockpit speakers	Bose
Speakers in salon	Bose
Speakers in cabin	Fusion
Auto extinguisher system	Checked 2026
Extra info	2x Protect beveiliging camera's met bewegingsdetectie en opname mogelijkheid op het achterdek en de radarbeugel.



PRESTIGE 550 FLYBRIDGE



PRESTIGE 550 FLYBRIDGE



PRESTIGE 550 FLYBRIDGE



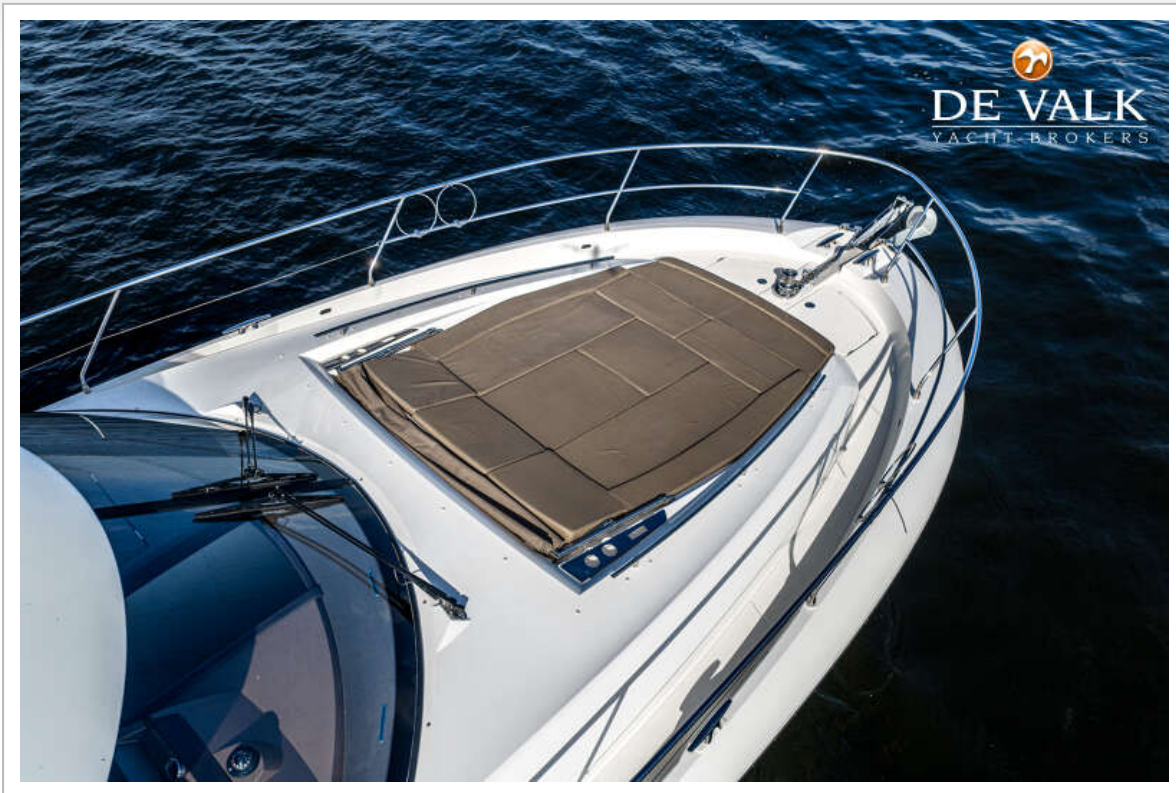
PRESTIGE 550 FLYBRIDGE



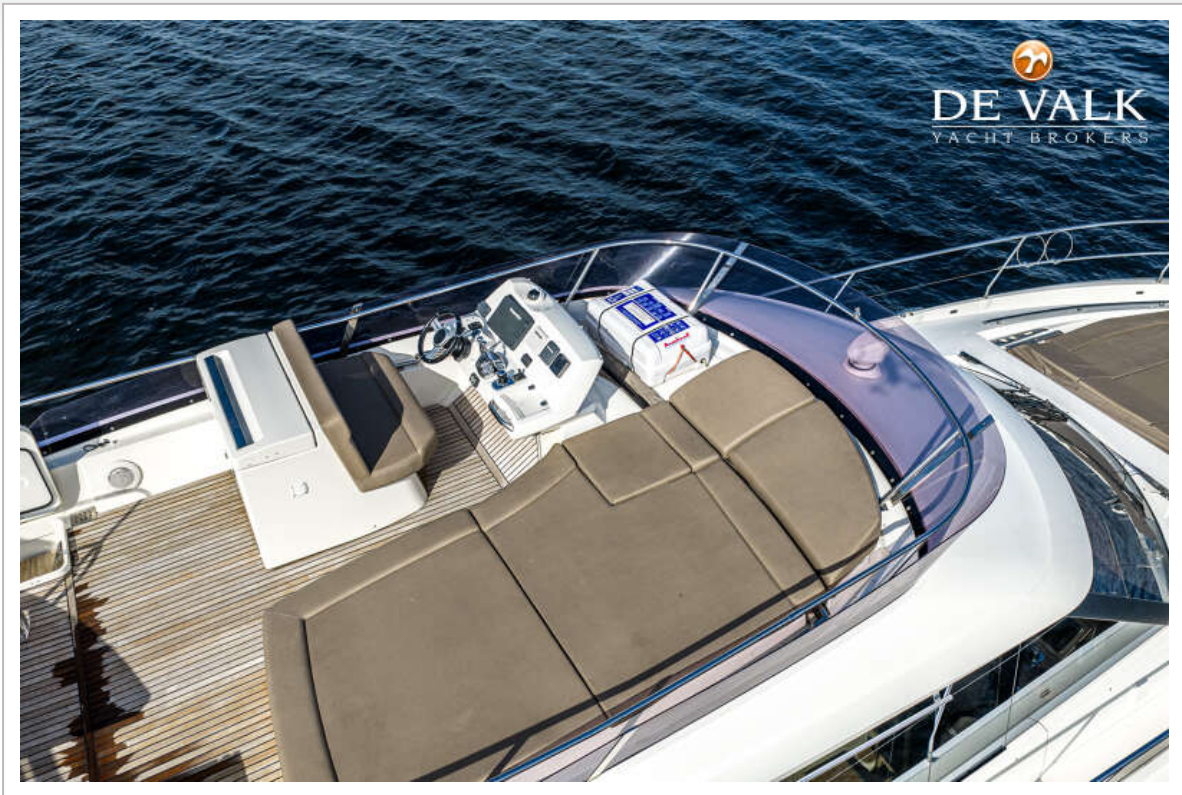
PRESTIGE 550 FLYBRIDGE



PRESTIGE 550 FLYBRIDGE



PRESTIGE 550 FLYBRIDGE



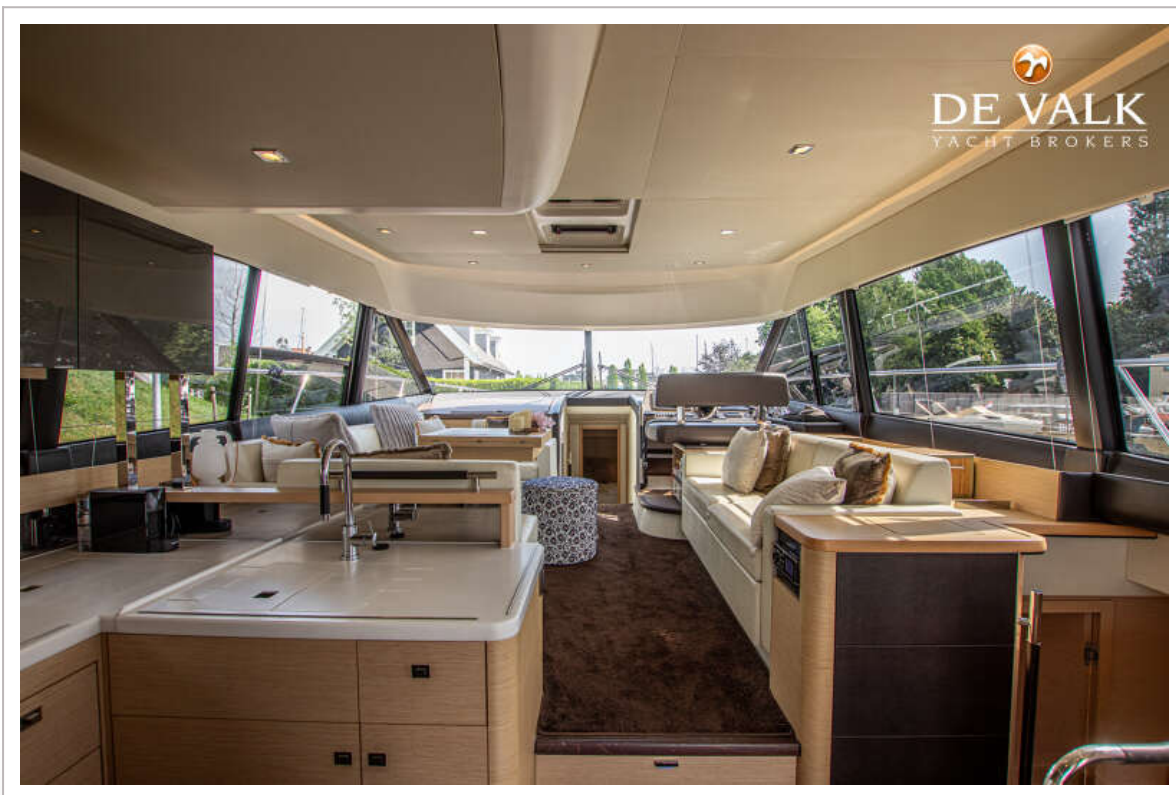
PRESTIGE 550 FLYBRIDGE



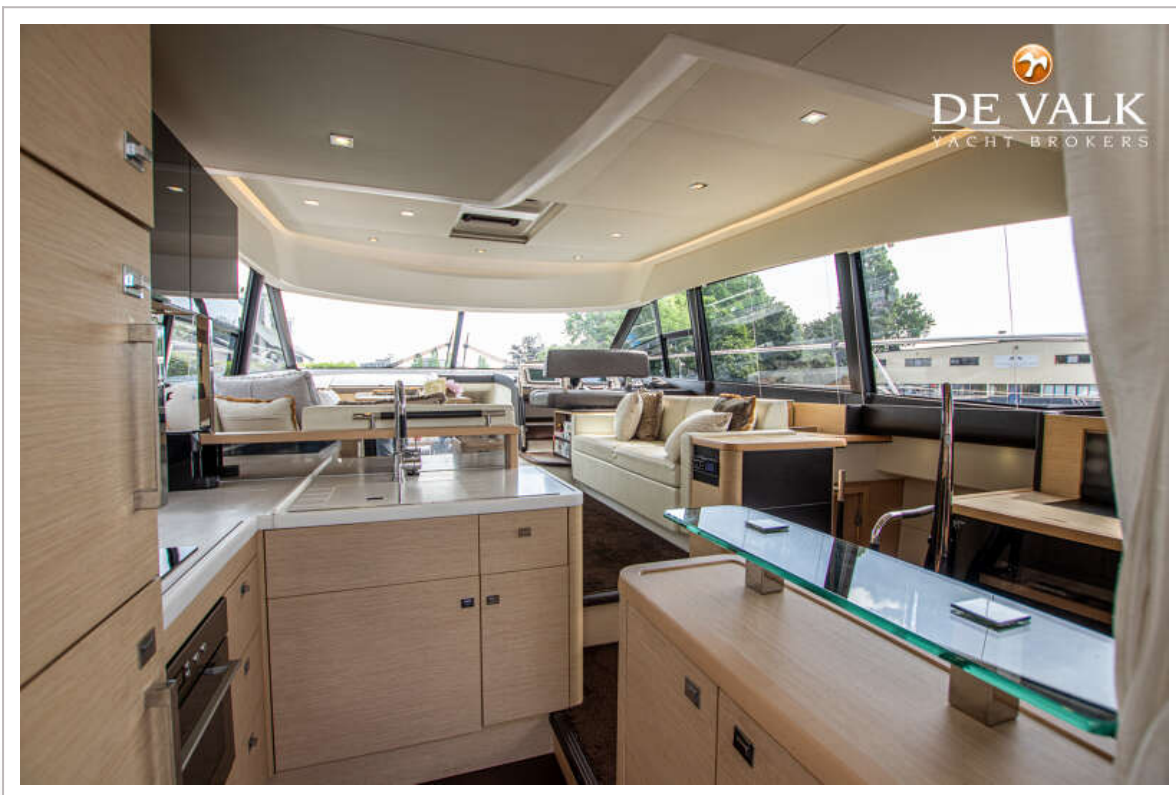
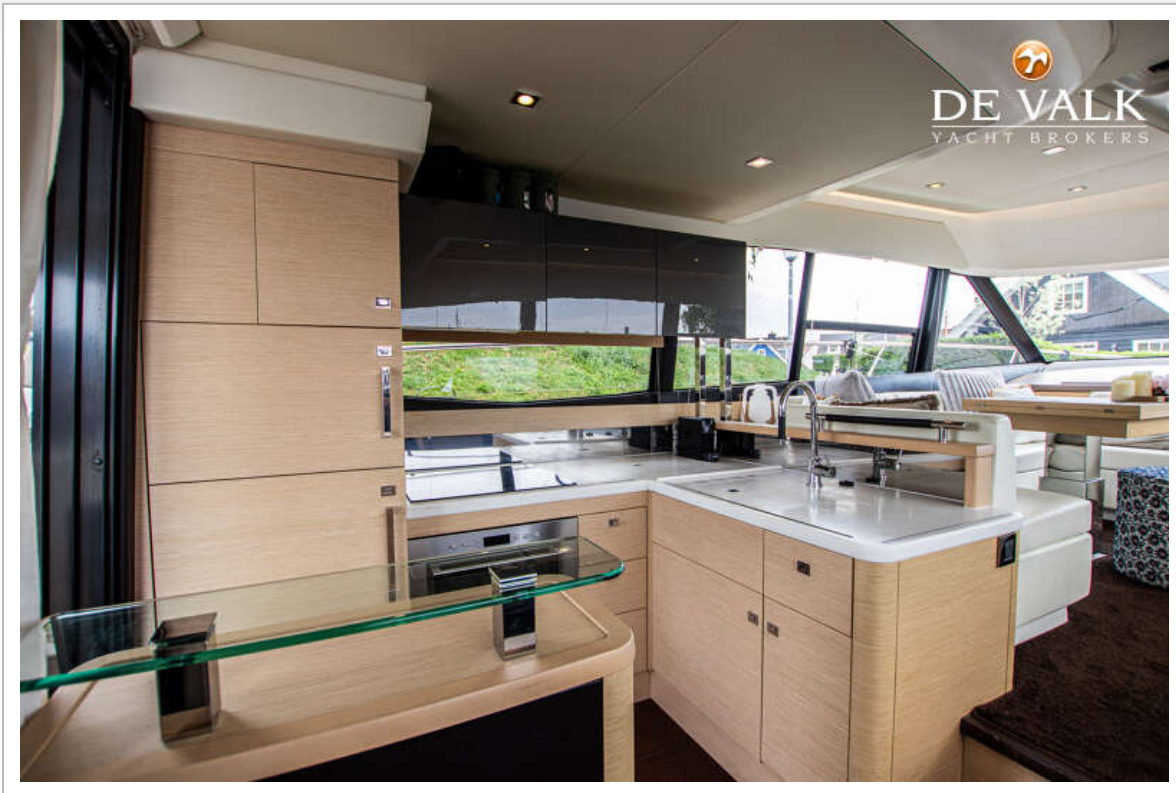
PRESTIGE 550 FLYBRIDGE



PRESTIGE 550 FLYBRIDGE



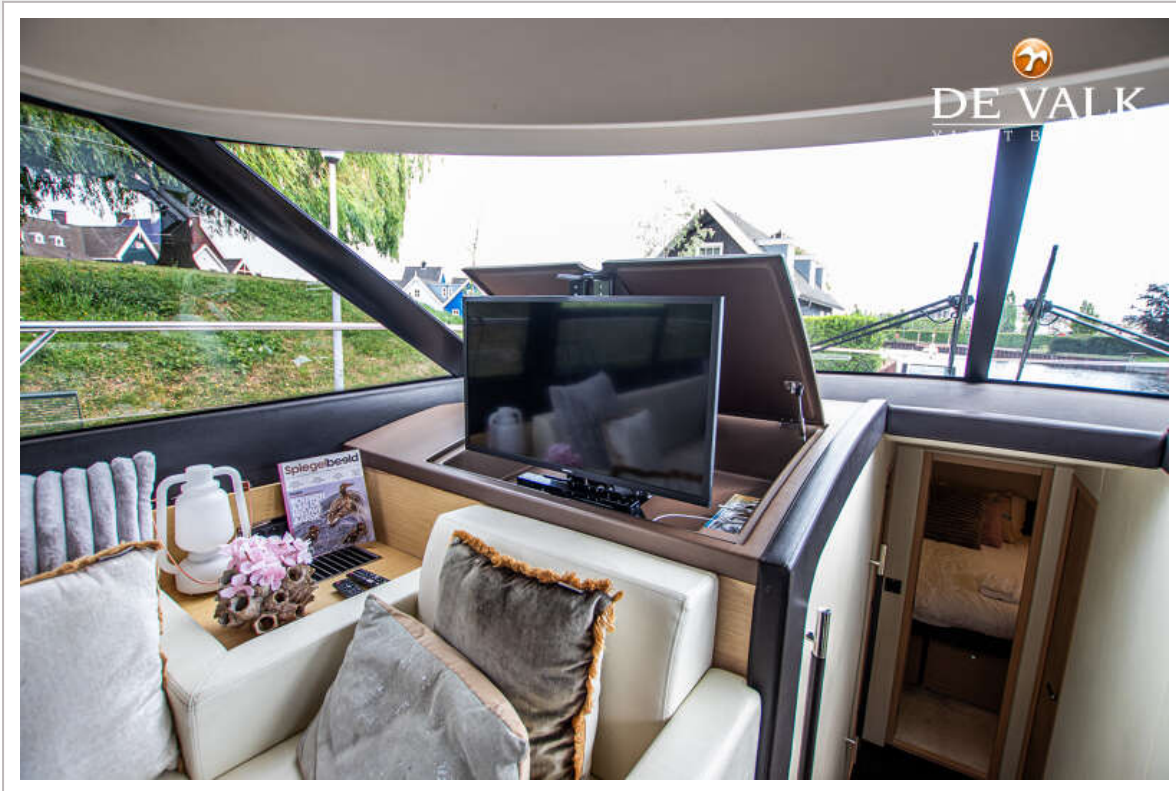
PRESTIGE 550 FLYBRIDGE



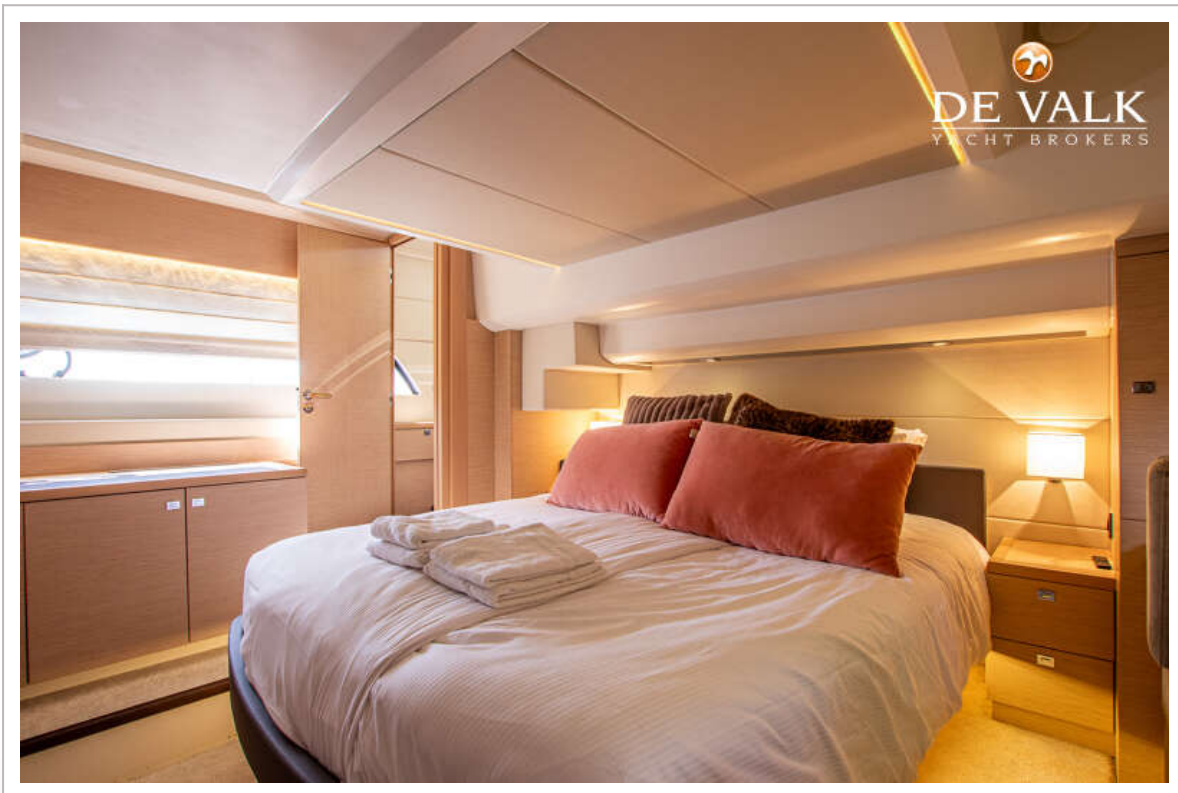
PRESTIGE 550 FLYBRIDGE



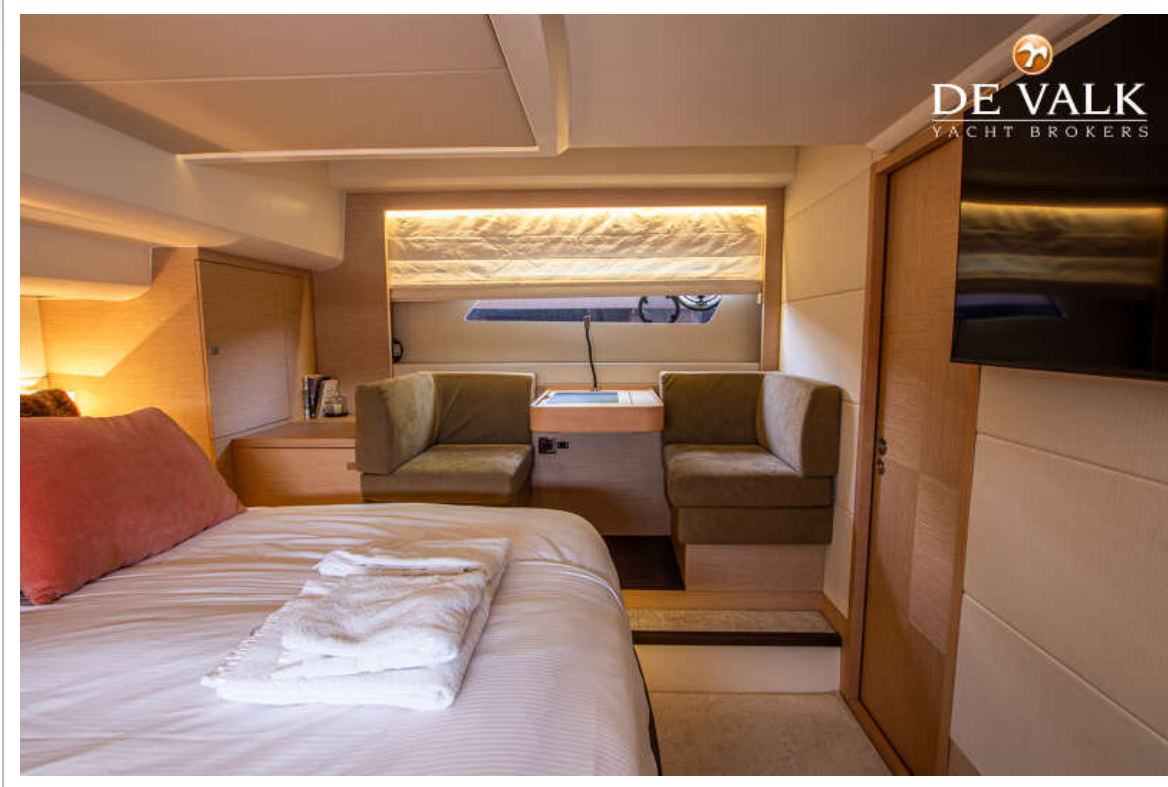
PRESTIGE 550 FLYBRIDGE



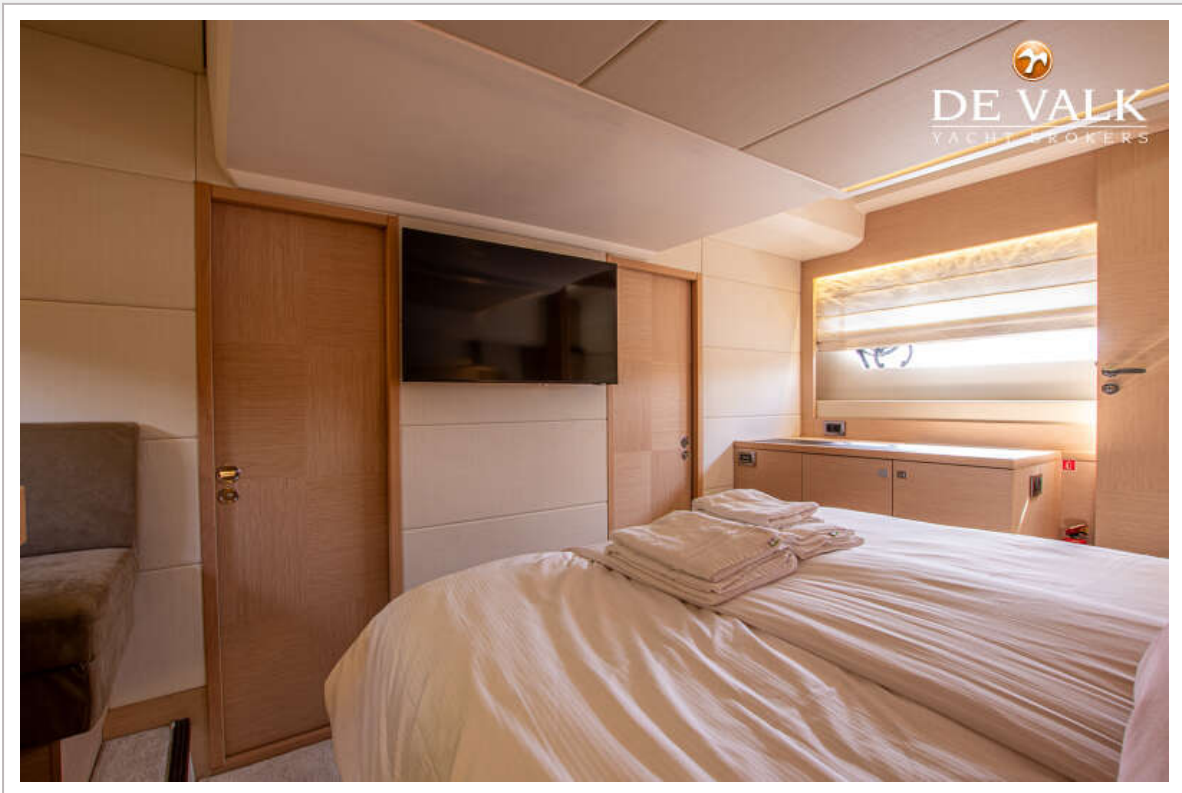
PRESTIGE 550 FLYBRIDGE



PRESTIGE 550 FLYBRIDGE



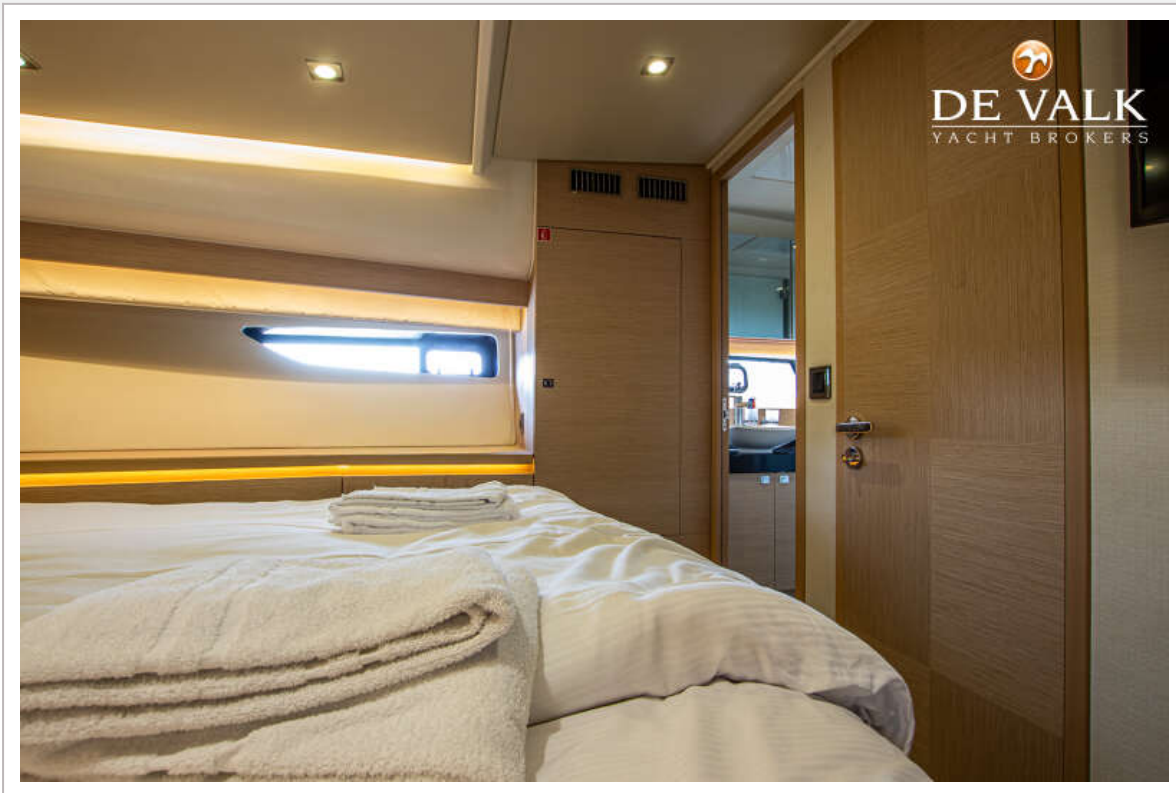
PRESTIGE 550 FLYBRIDGE



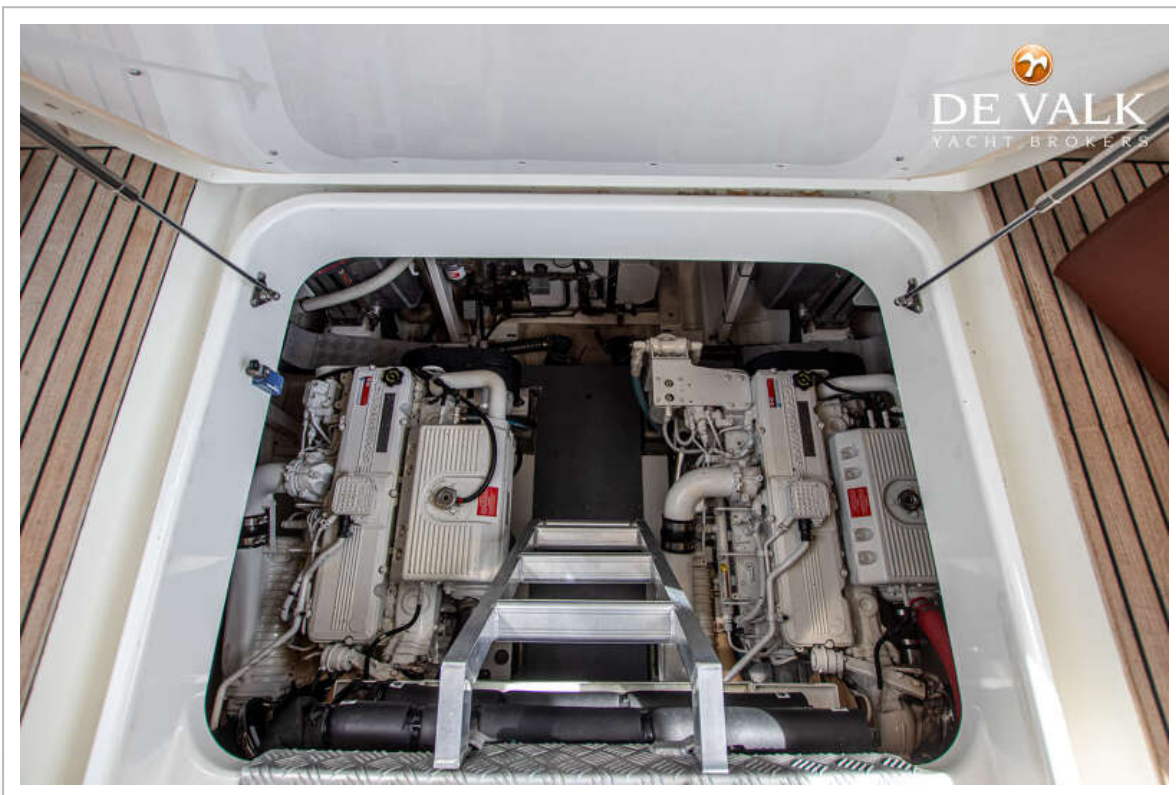
PRESTIGE 550 FLYBRIDGE



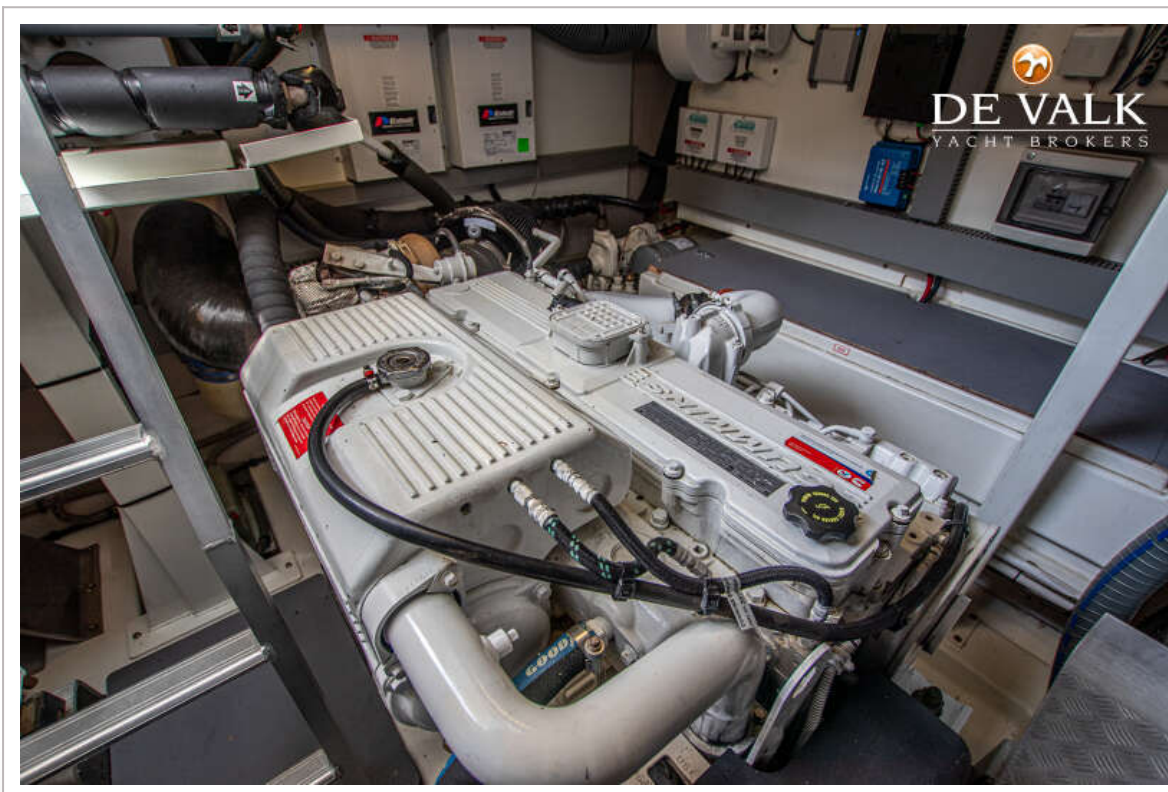
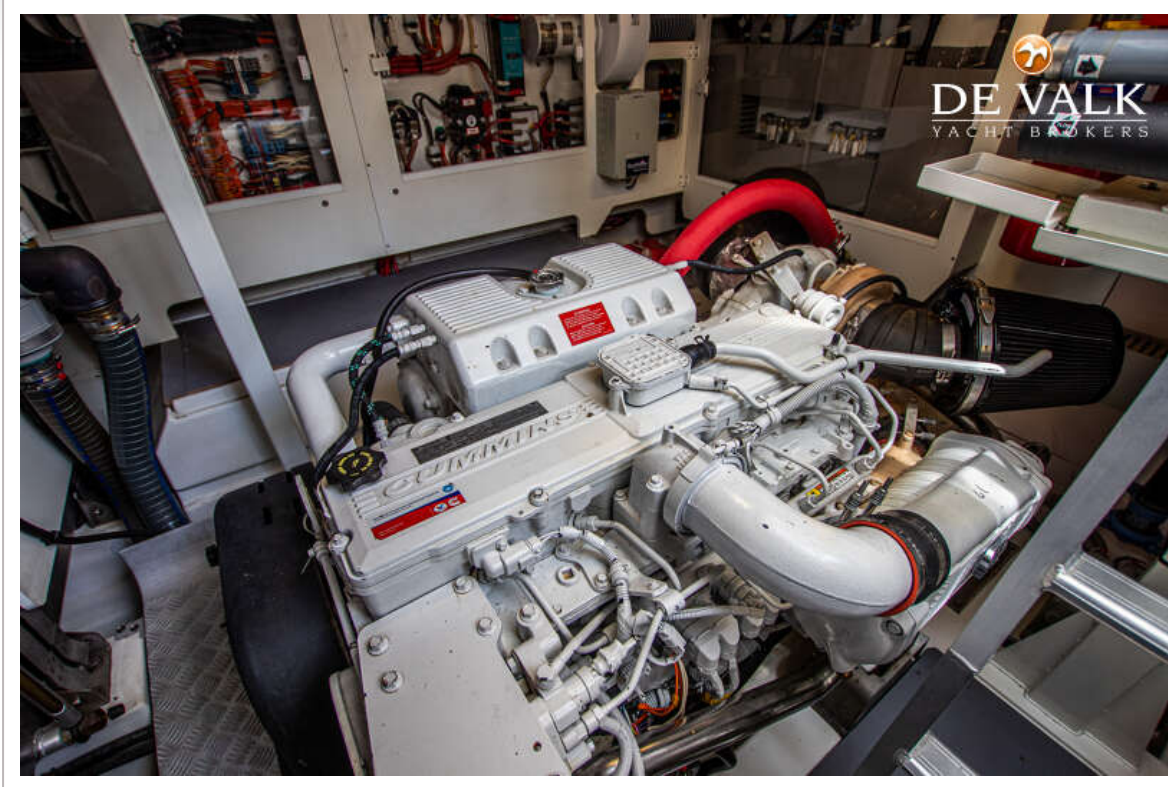
PRESTIGE 550 FLYBRIDGE



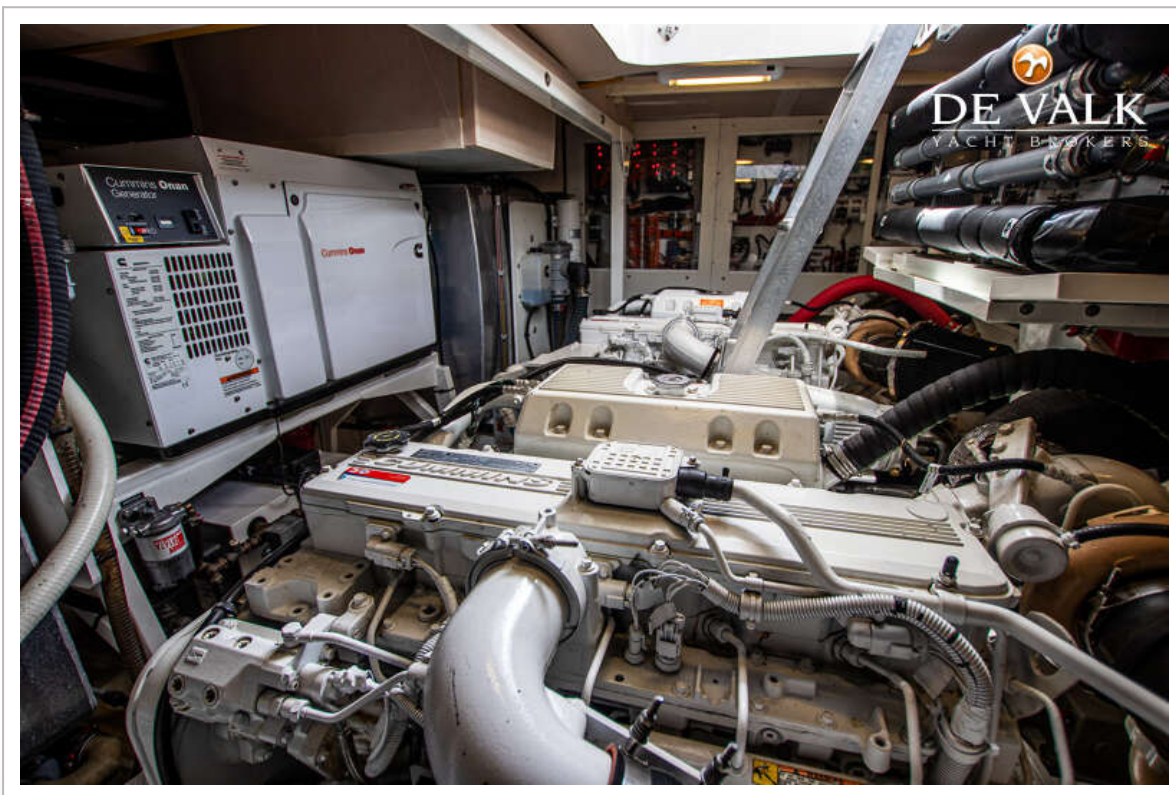
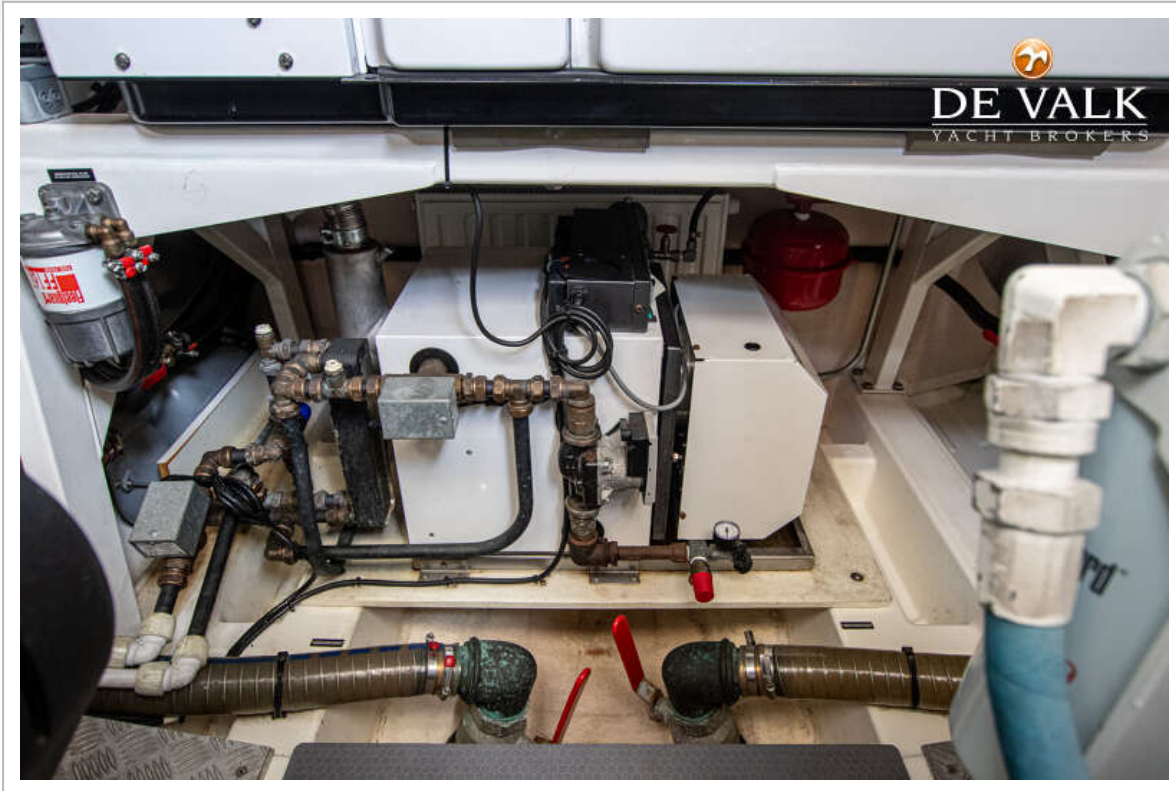
PRESTIGE 550 FLYBRIDGE



PRESTIGE 550 FLYBRIDGE



PRESTIGE 550 FLYBRIDGE



PRESTIGE 550 FLYBRIDGE

