



DE VALK
YACHT BROKERS



YAWL FINISTERRE



DE VALK
YACHT BROKERS

BROKER'S COMMENTS

Inspired by the legendary "Finisterre" by Olin Stephens for S&S, ARIA DI MARE represents its natural evolution. Built in 2013 she is larger, more comfortable and more complete: a true refinement, not merely a reinterpretation. Designed by the proud owner of the original Finisterre, she is born from a deep, lived understanding of the project transformed into vision. Every choice reflects real experience, every line preserves the original soul while enhancing its qualities. Bigger, better and more comfortable. A one-off creation where heritage and progress coexist without compromise.

Giovanni Spagnuolo

SPECIFICATIONS

Dimensions	16.60 x 4.85 x 1,50 / 3.00 (m)	Builder	Attilio Perin
Built	2013	Cabins	2
Material	Wood	Berths	7
Engine(s)	1 x Volvo Penta D3-110 diesel	Hp/Kw	110.00 (hp), 80.96 (kw)
Asking price	€ 350.000 (VAT Paid)	Lying	Italy

CONTACT

Sales office	De Valk Rome	Telephone	+39 06 65 81221
Address	c/o Nautilus Marina Srl, Via Monte Cadria, 127 00054 Fiumicino Roma IT	E-mail	rome@devalk.nl

DISCLAIMER

These particulars are given in good faith as supplied but cannot be guaranteed.



YAWL FINISTERRE

GENERAL

Model	YAWL FINISTERRE
Type	sailing yacht
LOA (m)	16,60
LWL (m)	12,50
Beam (m)	4,85
Draft (m)	3,00
Draft min (m)	1,50
Year built	2013
Builder	Attilio Perin
Country	Italy
Designer	Tarcisio Tedesco
Displacement (t)	20
CE norm	B
Hull material	wood
Hull colour	off-white
Hull thickness (mm)	38
Keel type	long keel
Superstructure material	mahogany
Deck material	mahogany
Deck finish	non-skid paint
Superstructure deck finish	non-skid paint
Cockpit deck finish	non-skid paint
Antifouling (year)	2025
Dorades	2
Window frame	stainless steel
Window material	tempered glass
Portholes	stainless steel
Radar arch	non collapsible
Fuel tank (litre)	stainless steel 500
Level indicator (fuel tank)	Yes



Freshwater tank (litre)	stainless steel 600
Level indicator (freshwater)	Yes
Blackwater tank (litre)	yes
Wheel steering	hydraulic
Inside helm position	Yes
Outside helm position	Yes

ACCOMMODATION

Cabins	2
Berths	7
Crew cabin	Yes
Crew berths	Yes
Interior	mahogany
Floor	parquet
Open cockpit	Yes
Pilot house	Yes
Heating	System preparation
Air-conditioning	System preparation
Chart table	Yes
Dinette	Yes
Dinette to convert into berth	Yes
Galley	Yes
Countertop	wood
Sink	stainless steel
Cooker	calor gas
Oven	Yes
Fridge	Yes
Hot water system	220V + engine
Water pressure system	electrical
Owners cabin	double bed
Bed length (m)	2x1,6



Wardrobe	hanging/drawers/shelves
Bathroom	en suite
Toilet	en suite
Toilet system	electric
Wash basin	at the toilet
Shower	en suite
Guest cabin 1	double bed
Bed length (m)	2x1,4
Wardrobe	hanging/drawers/shelves
Bathroom	shared
Toilet	shared
Toilet system	electric
Wash basin	in the bathroom
Shower	shared
Crew cabin(s)	Yes

MACHINERY

No of engines	1
Make	Volvo Penta
Type	D3-110
HP	110
kW	80.96
Fuel	diesel
Year installed	2012
Maximum speed (kn)	8
Cruising speed (kn)	7
Engine hours	90
Engine cooling system	closed keelcooling
Drive	shaft
Shaft seal	yes
Engine controls	electrical



Gearbox	mechanical
Bowthruster	electric
Sternthruster	electric
Exhaust	watercooled
Propeller type	feathering Max Prop Easy
Propeller shaft material	stainless steel
Shaft lubrication	grease
Electric bilge pump	3
Bilge alarm	Yes
Generator	yes
Generator 2	yes
Batteries	14, 100Ah each
Start battery	1 12v
Service battery	13, year 2025
Generator battery	Yes
Bowthruster battery	Yes, year 2025
Sternthruster battery	Yes, year 2025
Windlass battery	Yes
Battery monitor	Yes
Battery charger/inverter	Yes
Shorepower	with cable

NAVIGATION

Compass	Yes
Electric compass	Yes
Depth sounder	Yes
Log	Yes
Repeater	Yes
VHF	Yes
Autopilot	Yes
Radar/GPS/plotter	Raymarine



PC connection	Yes
Electronic chart(s)	yes
AIS receiver	2025
Radio receiver	Yes

EQUIPMENT

Fixed windscreen	yes
Cockpit cover	yes
Winter cover	yes
Cockpit cushions	2025
Cockpit table	yes
Boarding ladder	yes
Deck shower	yes
Anchor	Inox
Anchor chain	60 m
Anchor 2	yes
Anchor chain	yes
Windlass	electrical 2 inox 1500w
Sea railing	stainless steel
Pushpit	yes
Pulpit	yes
Lifejackets	yes
Horn	electric
Radar reflector	yes
Fenders	yes
Mooring lines	yes
Clock - barometer	yes
Fire extinguisher	yes
Extinguisher in engine room	yes

RIGGING



YAWL FINISTERRE

Rigging	yawl
Standing rigging	wire
Material mast	1 wood mizzen - 1 alloy main mast
Spreaders	yes
Keel stepped mast	Yes
Mainsail	yes
Mainsail cover	yes
Fully battened mainsail	yes
Mizzen	19mq
Mizzen sailcover	yes
Jib	44mq
Genoa I	97mq
Gennaker	200mq
Stormjib	22mq
Self tacking jib installation	yes
Backstay adjuster	hydraulic
Boomvang	gasspring
Primary sheet winch	2 inox electrical Andersen ST 2 speed
Secondary sheet winch	4 inox manual Andersen ST 2 speed
Extra info	Wood bowsprit telescopic



YAWL FINISTERRE



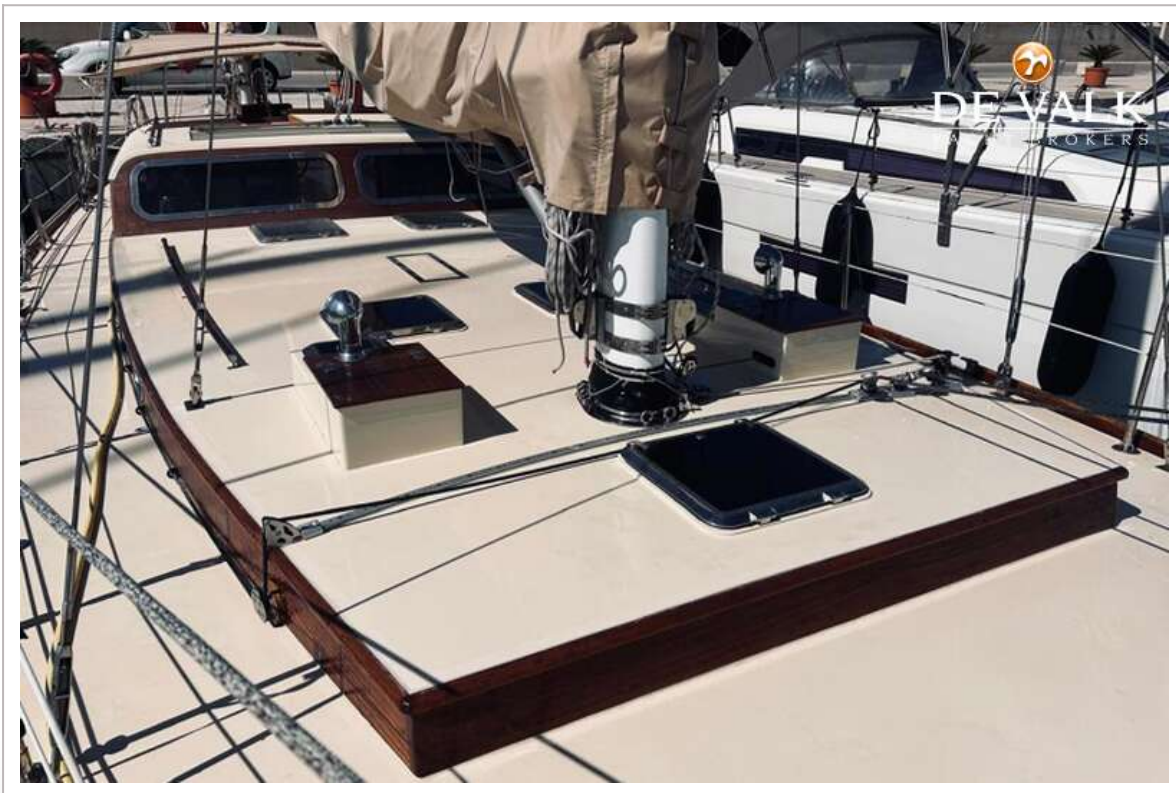
YAWL FINISTERRE



YAWL FINISTERRE



YAWL FINISTERRE



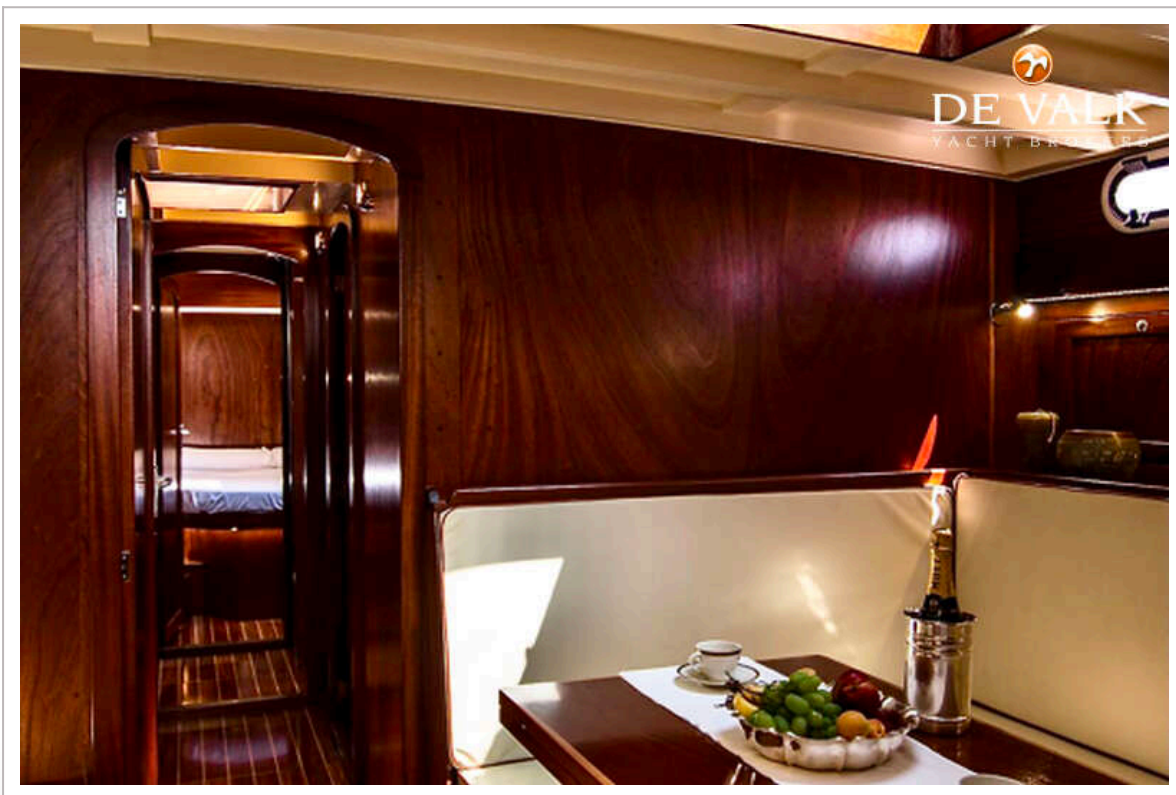
YAWL FINISTERRE



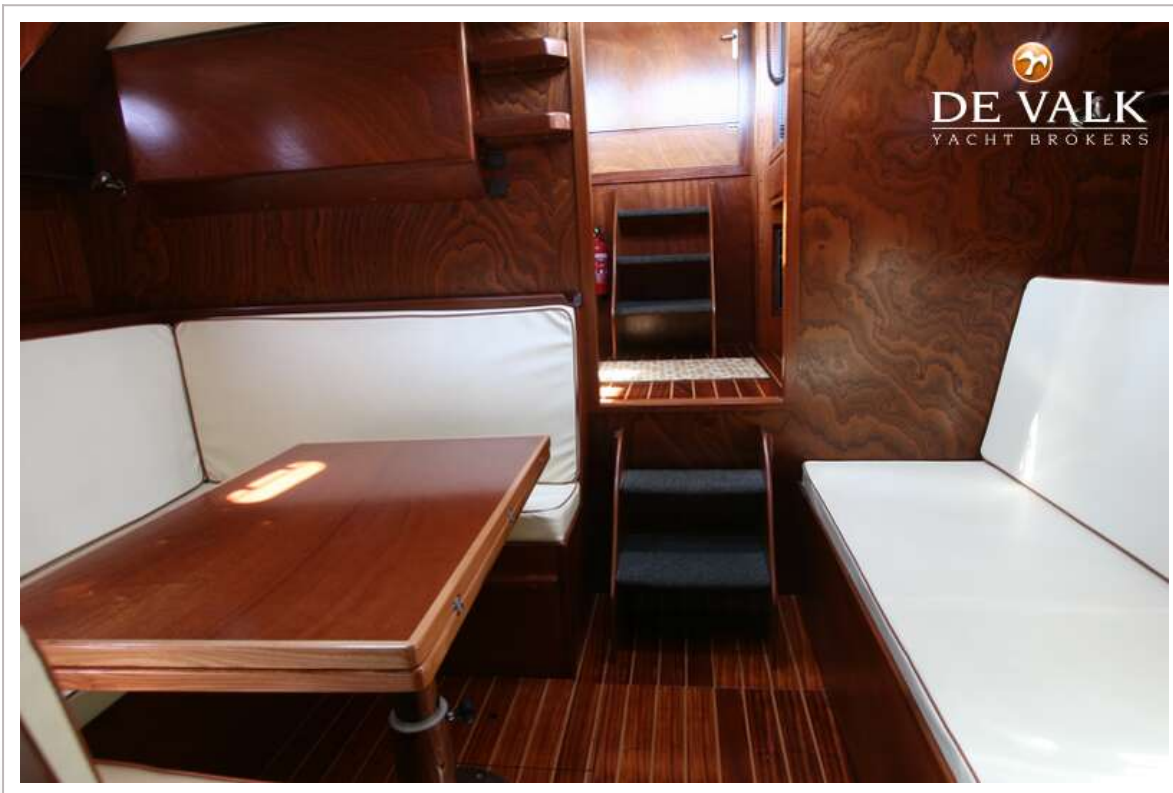
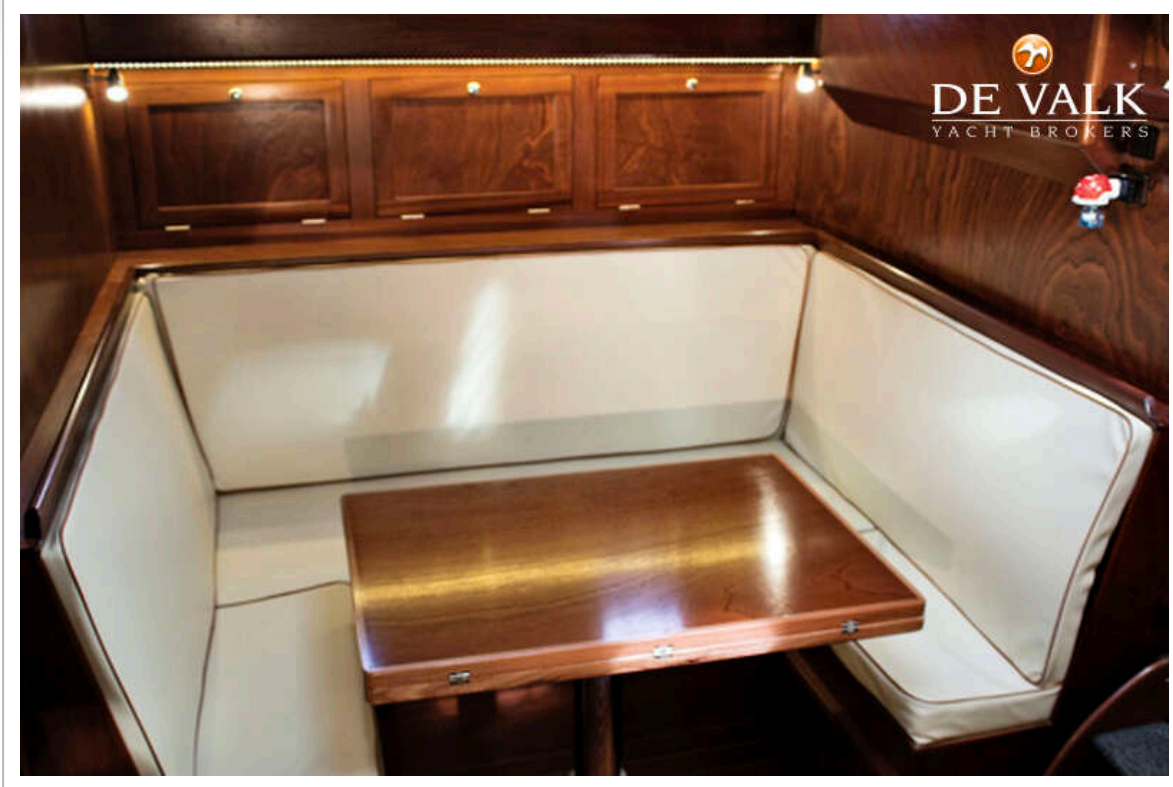
YAWL FINISTERRE



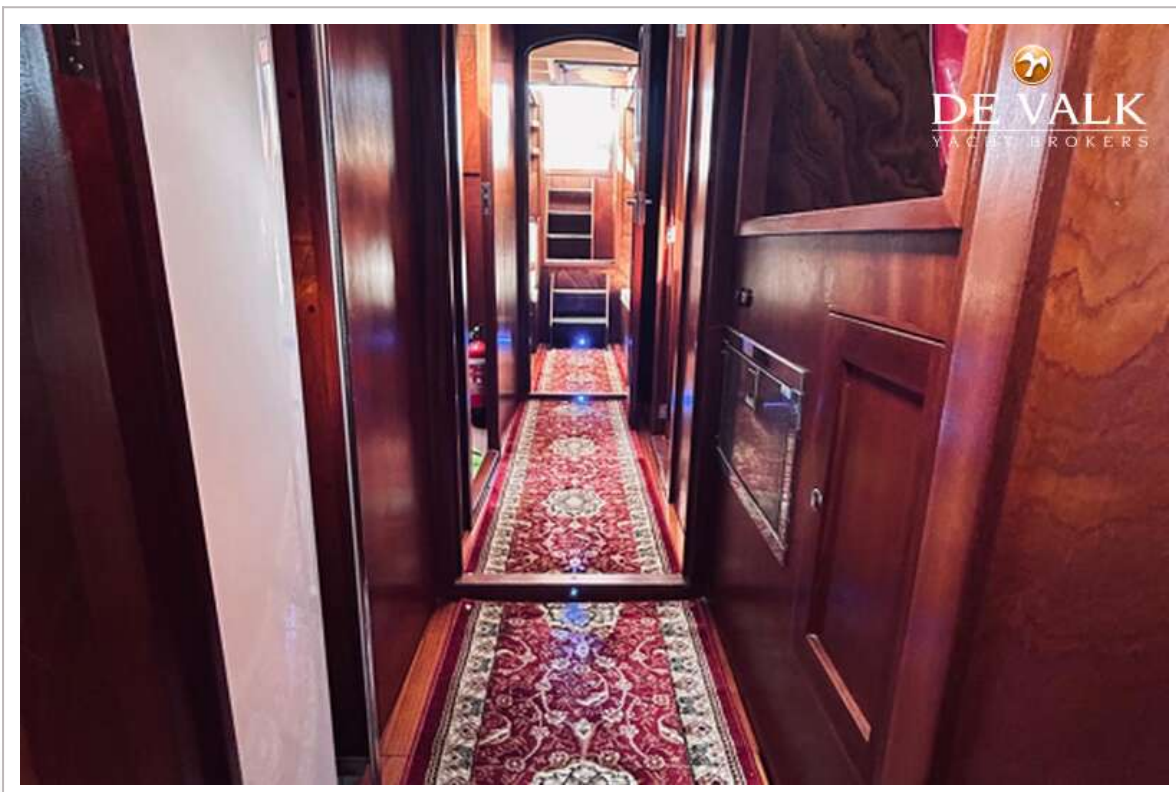
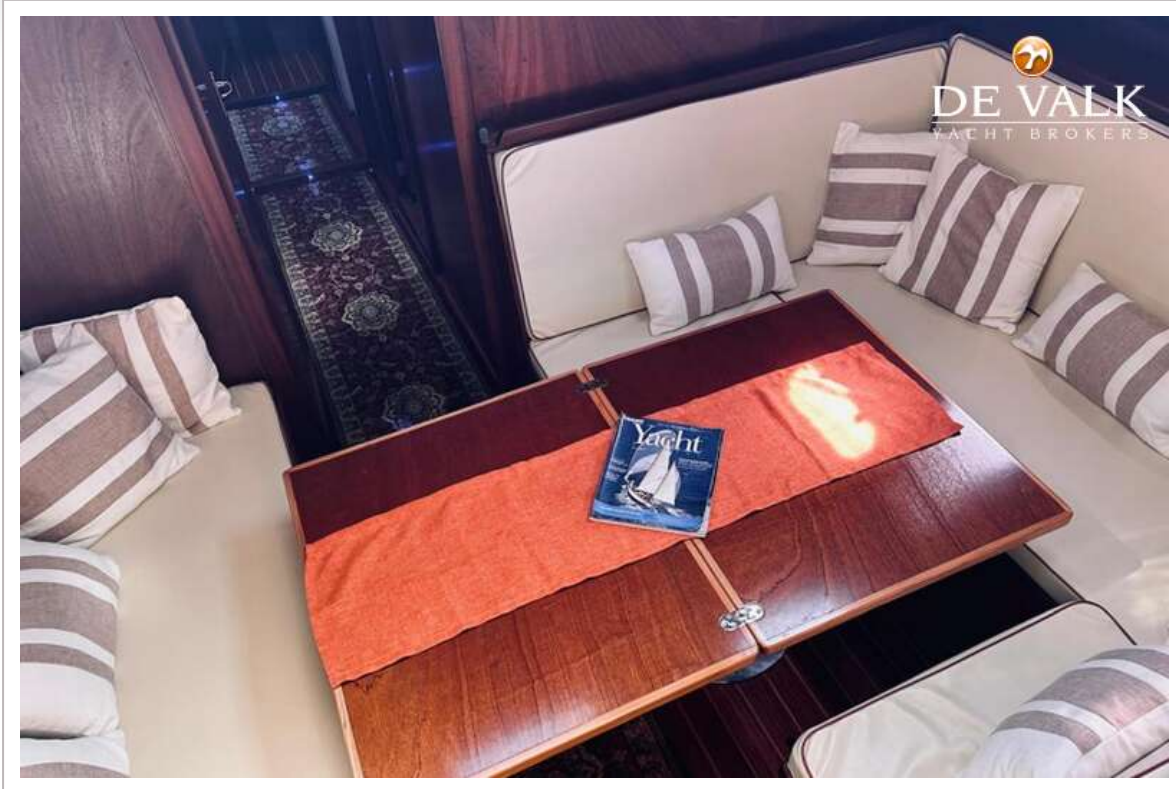
YAWL FINISTERRE



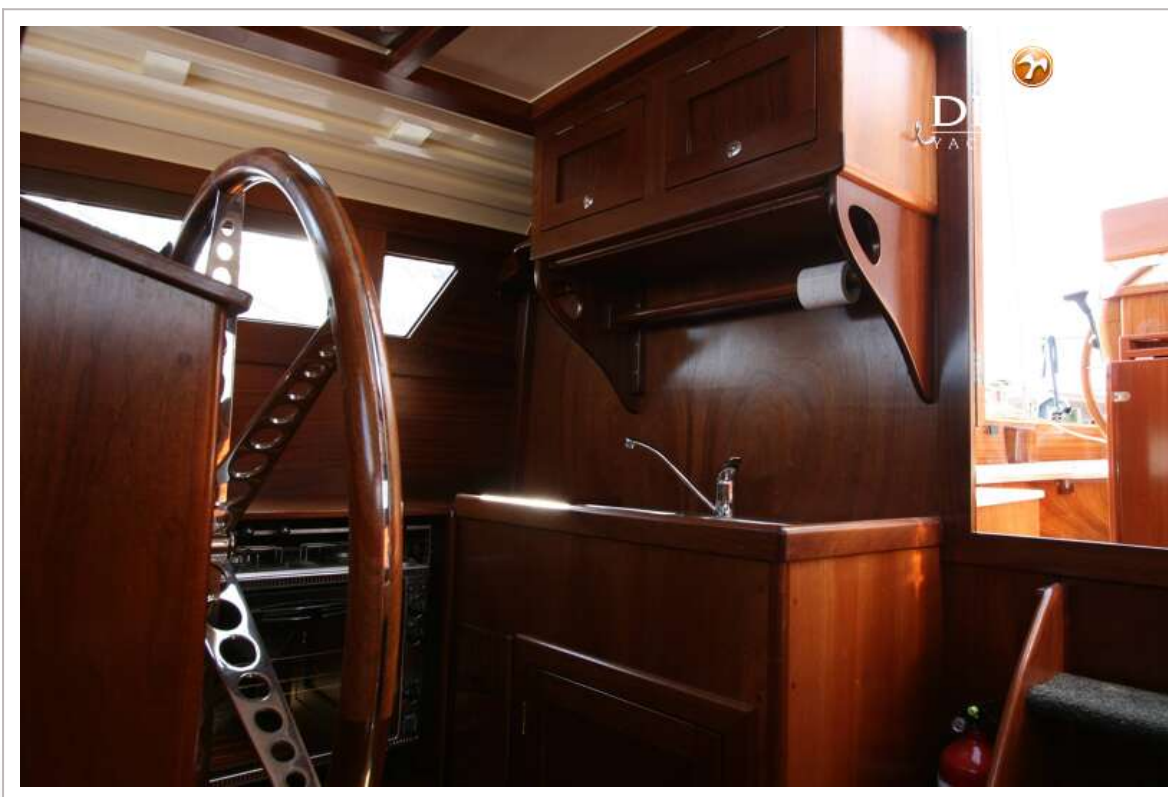
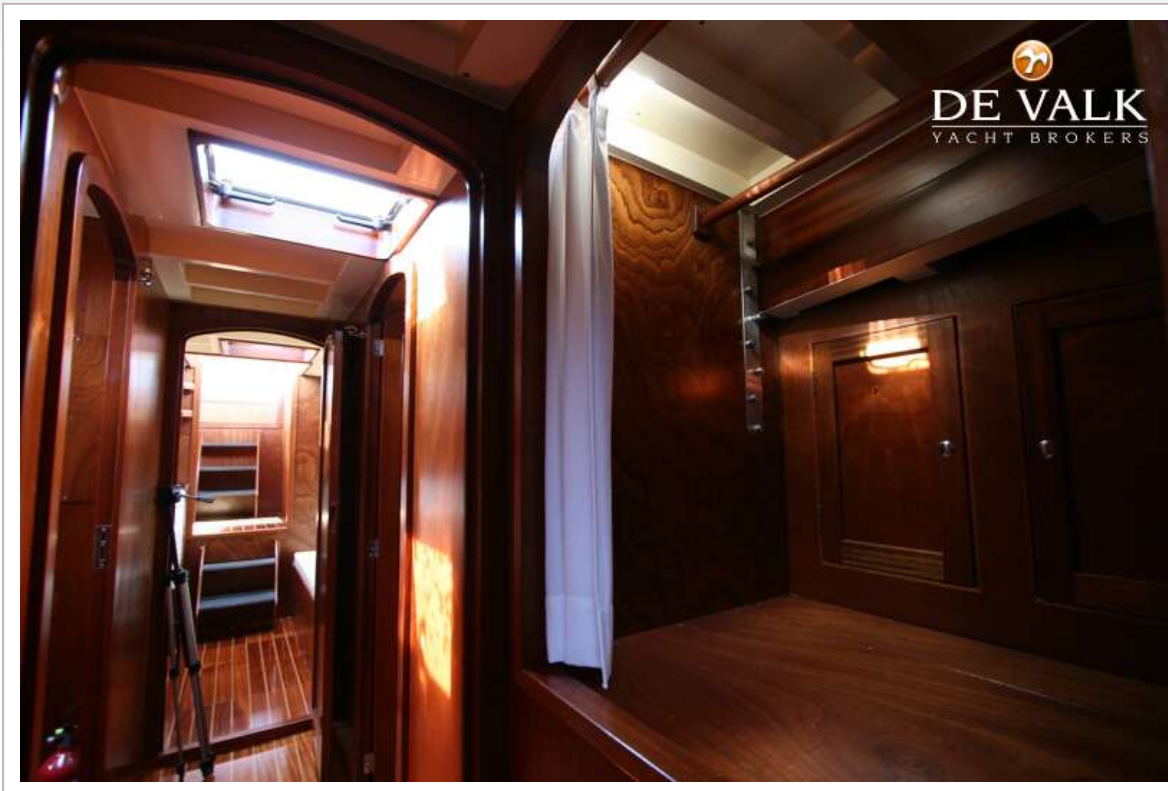
YAWL FINISTERRE



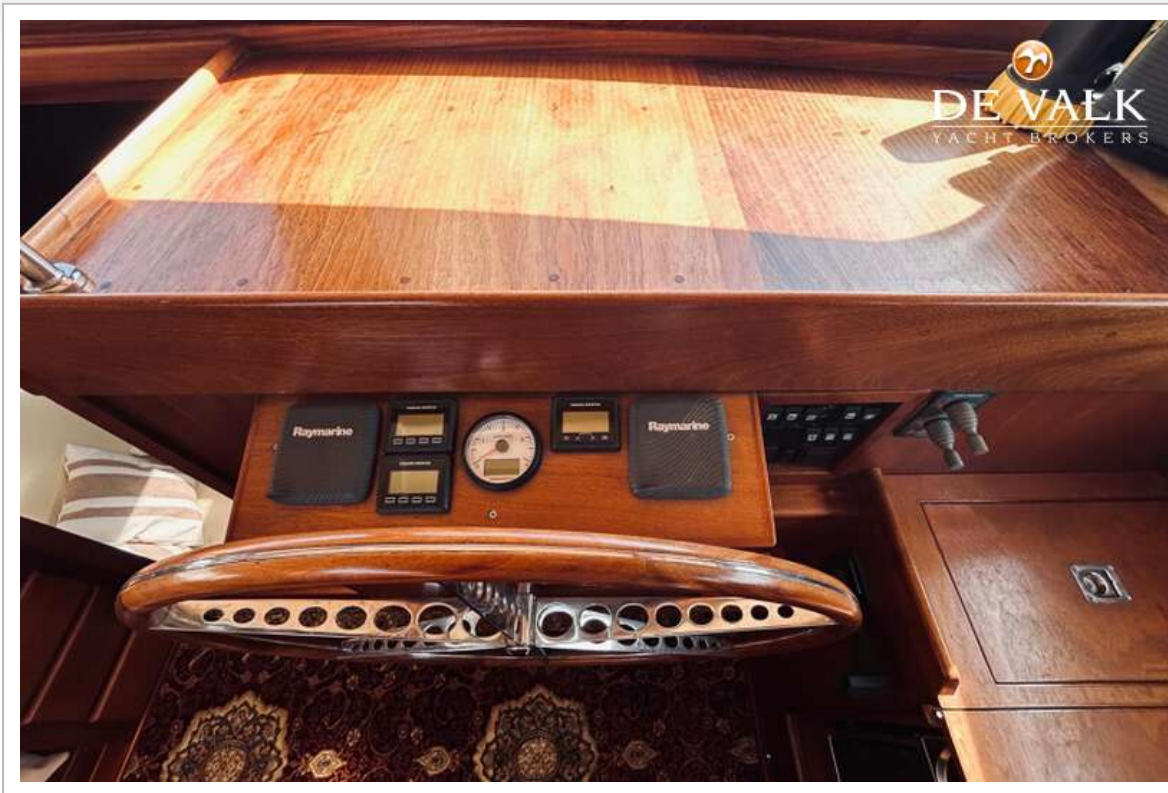
YAWL FINISTERRE



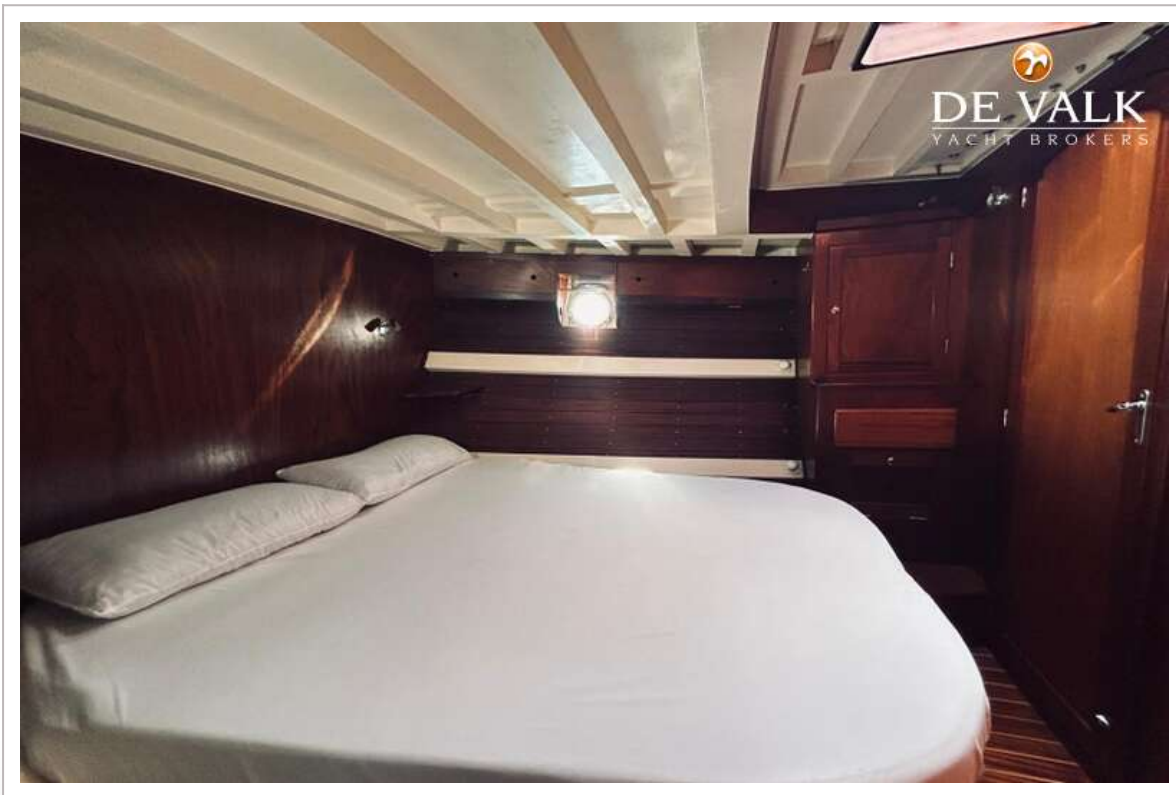
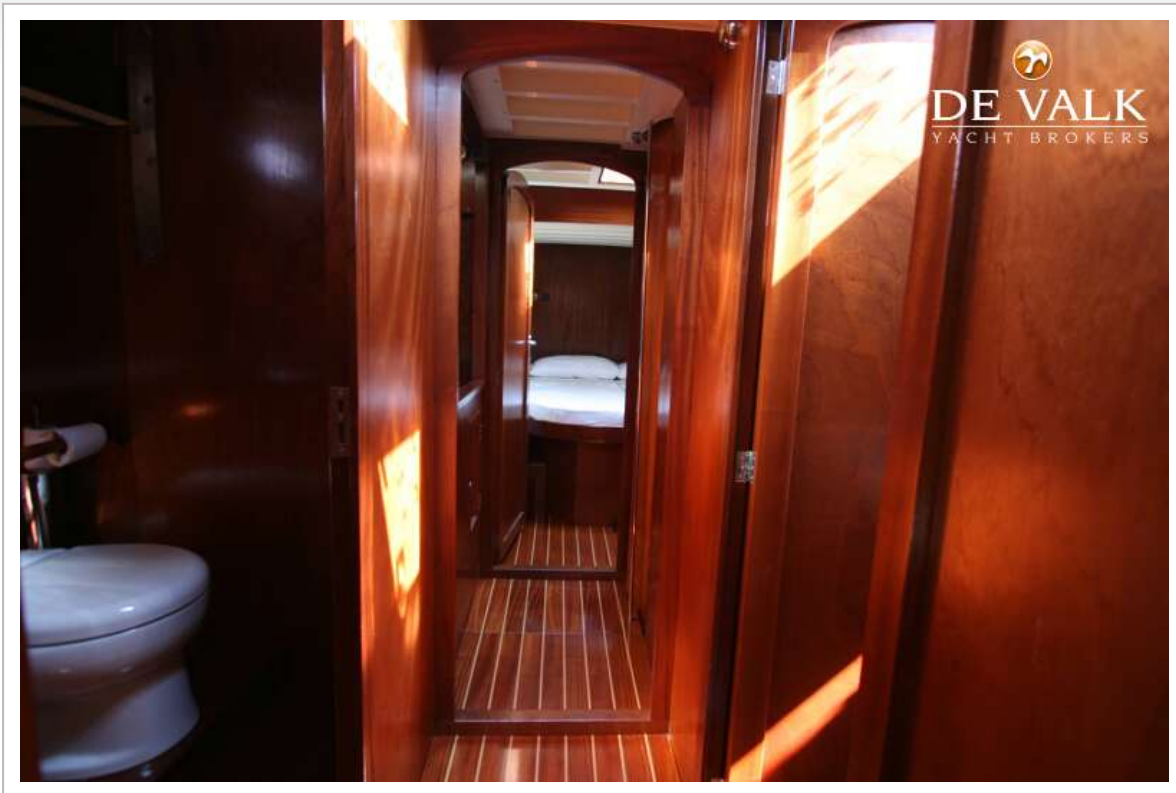
YAWL FINISTERRE



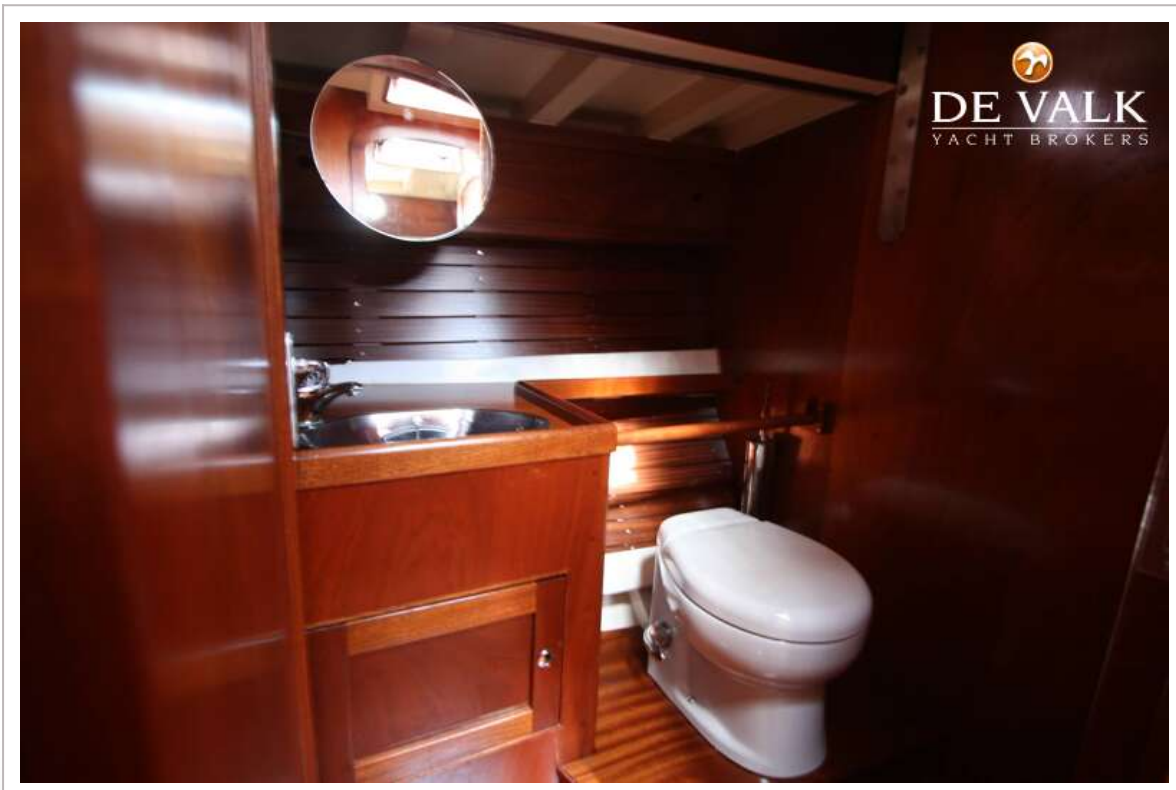
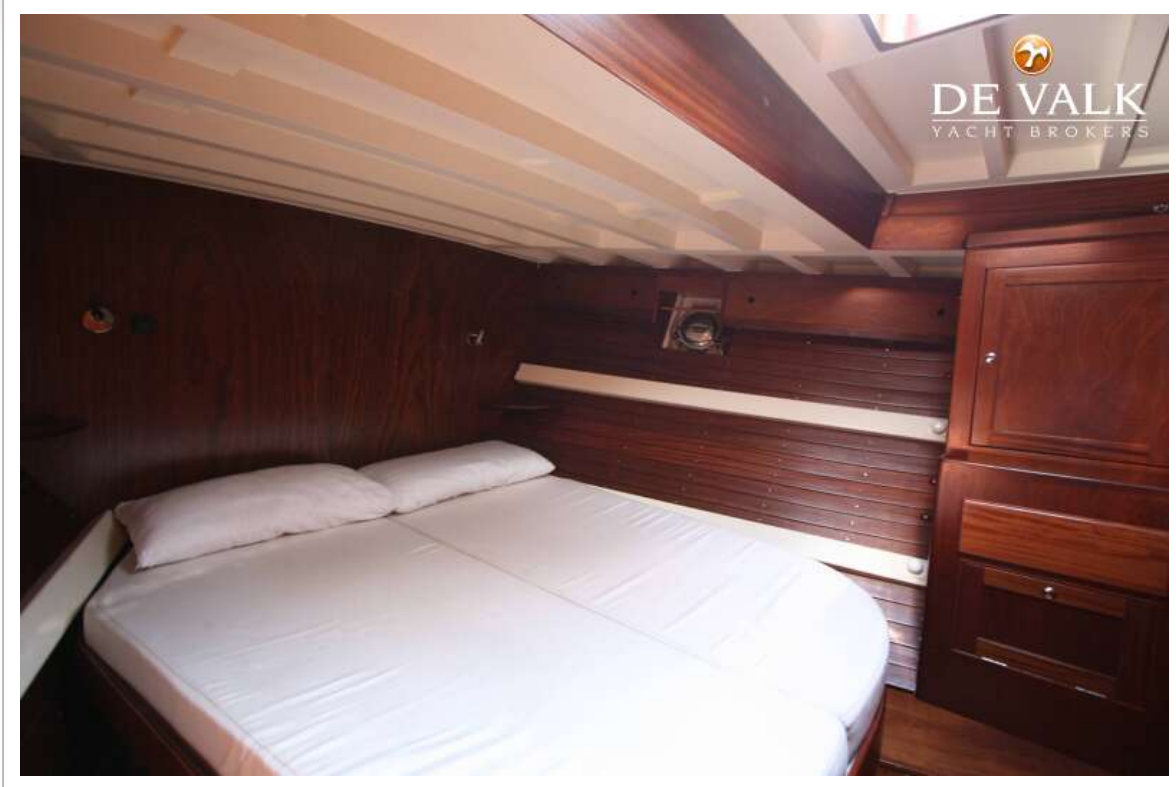
YAWL FINISTERRE



YAWL FINISTERRE



YAWL FINISTERRE



YAWL FINISTERRE

