



DE VALK  
YACHT BROKERS



NAJAD 373



DE VALK  
YACHT BROKERS

## BROKER'S COMMENTS

This well-maintained Najad 373 is a solid and comfortable sailing yacht with a centre cockpit, known for its excellent seakeeping abilities and high-quality Scandinavian craftsmanship. The Najad 373 offers great onboard comfort, stable and safe sailing characteristics, and is highly suitable for both coastal and offshore sailing. Recently, several upgrades have been carried out, including new sails, a sprayhood, and a cockpit tent. A well-kept and solid yacht for the discerning sailor. This Najad 373 is available for viewing near Rotterdam.

*Jochem Heijermans*

## SPECIFICATIONS

<b>Dimensions</b>	11.30 x 3.65 x 1.90 (m)	<b>Builder</b>	Najad Varvet
<b>Built</b>	2000	<b>Cabins</b>	2
<b>Material</b>	GRP	<b>Berths</b>	6
<b>Engine(s)</b>	1 x Yanmar 4JH3E diesel	<b>Hp/Kw</b>	53.00 (hp), 39.01 (kw)
<b>Asking price</b>	€ 159.000 (VAT Paid)	<b>Lying</b>	elsewhere / Not at sales office

## CONTACT

<b>Sales office</b>	De Valk Sint Annaland B.V.	<b>Telephone</b>	+31 166 601 000
<b>Address</b>	Koelhuisweg 4 4697 RM Sint Annaland NL	<b>E-mail</b>	sintannaland@devalk.nl

## DISCLAIMER

These particulars are given in good faith as supplied but cannot be guaranteed.



## GENERAL

<b>Model</b>	NAJAD 373
<b>Type</b>	sailing yacht
<b>LOA (m)</b>	11,30
<b>LWL (m)</b>	9,75
<b>Beam (m)</b>	3,65
<b>Draft (m)</b>	1,90
<b>Air draft (m)</b>	17,25
<b>Headroom (m)</b>	1,90
<b>Year built</b>	2000
<b>Builder</b>	Najad Varvet
<b>Country</b>	Sweden
<b>Designer</b>	Judel en Vrolijk
<b>Displacement (t)</b>	8,3
<b>Ballast (tonnes)</b>	lead 3,1
<b>CE norm</b>	A
<b>Hull material</b>	GRP
<b>Hull colour</b>	white
<b>Hull shape</b>	round-bilged
<b>Keel type</b>	fin keel
<b>Superstructure material</b>	GRP
<b>Deck material</b>	GRP
<b>Deck finish</b>	teak
<b>Superstructure deck finish</b>	teak
<b>Cockpit deck finish</b>	teak
<b>Antifouling (year)</b>	03-2026
<b>Dorades</b>	2 x
<b>Window frame</b>	aluminium
<b>Window material</b>	perspex
<b>Deckhatch</b>	3 x
<b>Fuel tank (litre)</b>	stainless steel 180



Level indicator (fuel tank)	yes
Freshwater tank (litre)	stainless steel 315 in two tanks
Level indicator (freshwater)	yes
Blackwater tank (litre)	55
Blackwater tank extraction	deck extraction + uw line
Wheel steering	cable steering
Emergency tiller	yes
More info on hull	Treated with 5 layers of Gelshield + Antifouling (2014)

## ACCOMMODATION

Cabins	2
Berths	6
Interior	mahogany
Floor	teak and holly
Headroom saloon (m)	1,90
Heating	diesel ducted hot air Eberspacher
Chart table	yes
Aft Cabin	yes
Dinette	yes
Galley	yes
Countertop	plastic
Sink	stainless steel
Cooker	calor gas Optimus 2 burner
Oven	yes
Fridge	Big toploader in countertop
Hot water system	220V + engine (new boiler 2023)
Water pressure system	electrical (new pump 2025)
Owners cabin	double bed
Bed length (m)	2,15 x 1,50
Wardrobe	hanging and shelves
Bathroom	shared



<b>Toilet</b>	shared
<b>Toilet system</b>	electric
<b>Wash basin</b>	in the bathroom
<b>Shower</b>	shared
<b>Guest cabin 1</b>	v-bed
<b>Bed length (m)</b>	1,95 x 1,50
<b>Wardrobe</b>	hanging and shelves
<b>Extra info</b>	Gas valve and gas hose in gas locker replaced (2022)

## MACHINERY

<b>No of engines</b>	1
<b>Make</b>	Yanmar
<b>Type</b>	4JH3E
<b>HP</b>	53
<b>kW</b>	39.01
<b>Fuel</b>	diesel
<b>Year installed</b>	2000
<b>Engine cooling system</b>	freshwater heat exchanger
<b>Drive</b>	shaft
<b>Engine controls</b>	bowden cable
<b>Gearbox</b>	mechanical
<b>Bowthruster</b>	electric Vetus 80KGF
<b>Thrust bearing</b>	Aquadrive
<b>Propeller type</b>	folding
<b>Propeller blades</b>	3
<b>Propeller shaft material</b>	stainless steel
<b>Shaft lubrication</b>	water Volvo Seal
<b>Manual bilge pump</b>	yes
<b>Electric bilge pump</b>	yes
<b>Electrical installation</b>	12/220V
<b>Start battery</b>	1 x



<b>Service battery</b>	3 x
<b>Battery monitor</b>	yes
<b>Battery charger</b>	Hi-Tec 12/40a
<b>Shorepower</b>	with cable
<b>Extra info</b>	Last engine service 04-2026

## NAVIGATION

<b>Compass</b>	At helmposition
<b>Depth sounder</b>	Raymarine ST60
<b>Log</b>	Raymarine ST60
<b>Windset</b>	Raymarine ST60
<b>Repeater</b>	Raymarine ST60 Multi
<b>VHF</b>	Shipmate RS 8300
<b>Autopilot</b>	Raymarine ST6000+
<b>Rudder angle indicator</b>	On autopilot
<b>Plotter</b>	Raymarine E80 with keyboard
<b>Navigation lights</b>	yes

## EQUIPMENT

<b>Fixed windscreen</b>	yes
<b>Sprayhood</b>	(2023)
<b>Cockpit cover</b>	(2023)
<b>Winter cover</b>	yes
<b>Cockpit table</b>	yes
<b>Bathing platform</b>	yes
<b>Boarding ladder</b>	stainless steel
<b>Deck shower</b>	On bathingplatform
<b>Anchor</b>	Bruce
<b>Anchor chain</b>	yes
<b>Anchor 2</b>	On stern
<b>Anchor chain</b>	yes



<b>Windlass</b>	electrical Lofrans
<b>Windlass aft</b>	electrical Lofrans
<b>Sea railing</b>	wire
<b>Grab rail (superstructure)</b>	teak
<b>Pushpit</b>	yes
<b>Pulpit</b>	yes
<b>Life raft</b>	container Autoflug 4 (survey till 2028)
<b>Radar reflector</b>	yes
<b>Fenders</b>	yes
<b>Mooring lines</b>	yes
<b>Radio-cd player</b>	Pioneer
<b>Cockpit speakers</b>	yes
<b>Speakers in salon</b>	yes
<b>Clock - barometer</b>	yes

## RIGGING

<b>Rigging</b>	sloop
<b>Standing rigging</b>	wire
<b>Brand mast</b>	Seldén
<b>Material mast</b>	aluminium
<b>Spreaders</b>	2 x
<b>Mainsail</b>	Hagoort with vertical battens (2021)
<b>Stoway mast</b>	yes
<b>Genoa II</b>	Hagoort (2021)
<b>Genoa furler</b>	Furlex
<b>Reefing System</b>	main in-mast furling
<b>Backstay adjuster</b>	mechanical Selden
<b>Boomvang</b>	gasspring Selden
<b>Genoa sheetwinches</b>	2 x Andersen 52 ST Electric (two speed)
<b>Halyard winches</b>	1 x Andersen on mast
<b>Multifunctional winches</b>	1 x Andersen 28 ST Electric in cockpit (one speed)



Spi-pole

aluminium



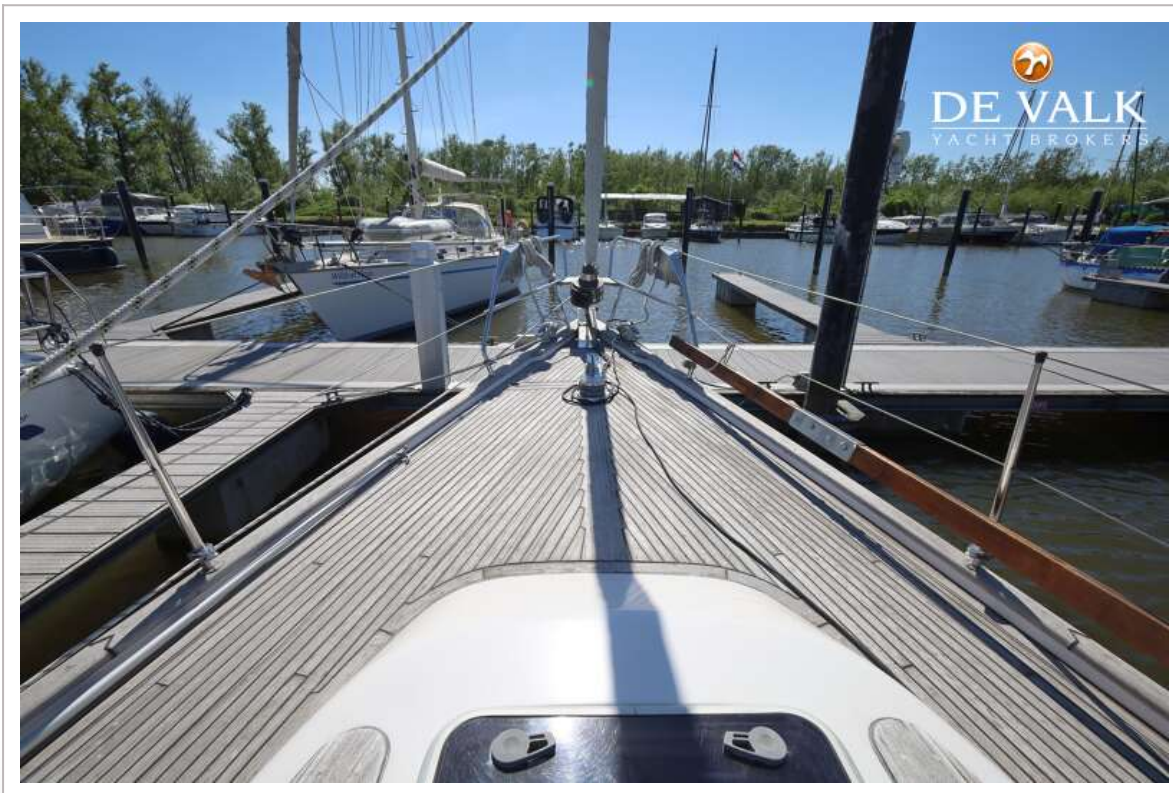
# NAJAD 373



# NAJAD 373



# NAJAD 373



# NAJAD 373



# NAJAD 373



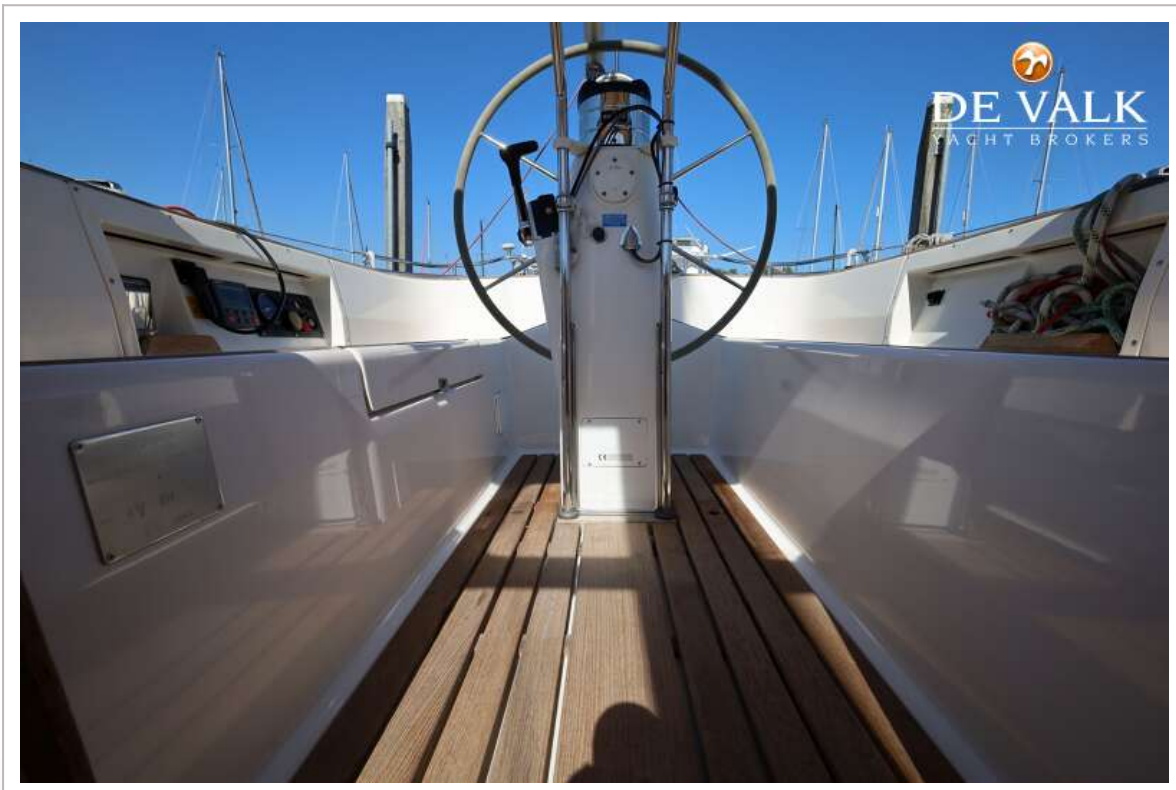
# NAJAD 373



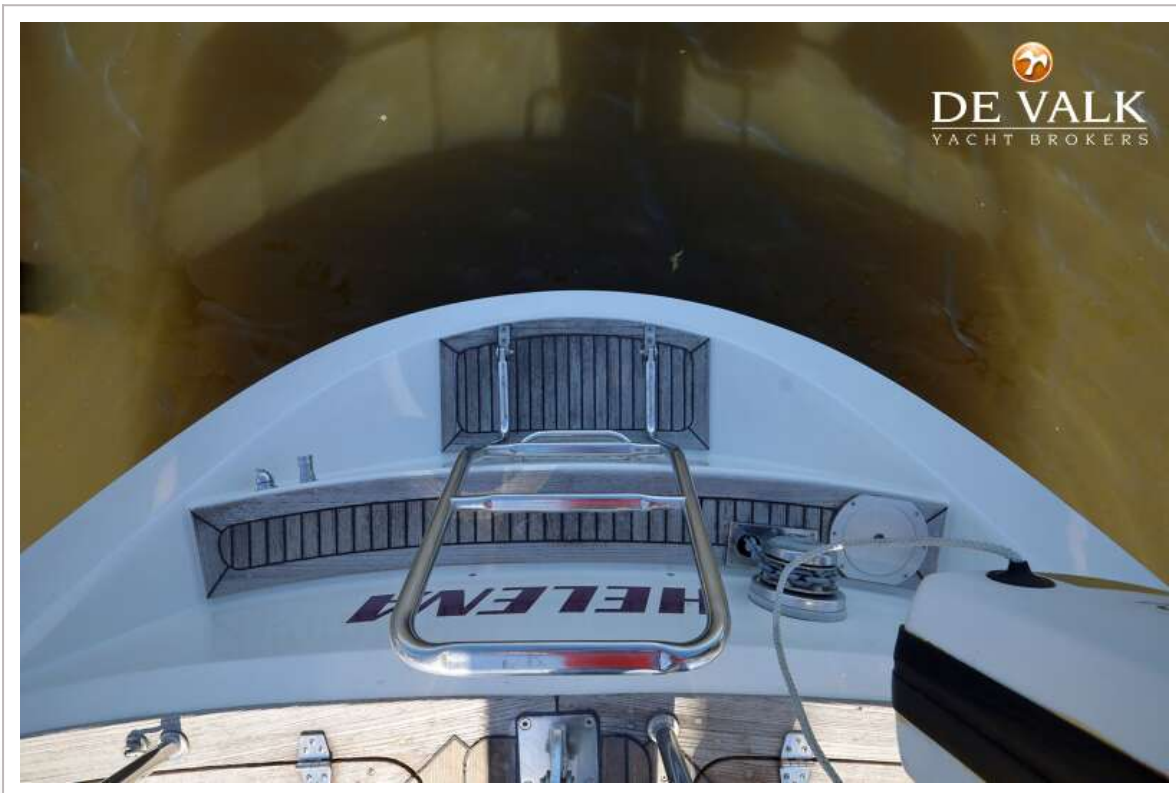
# NAJAD 373



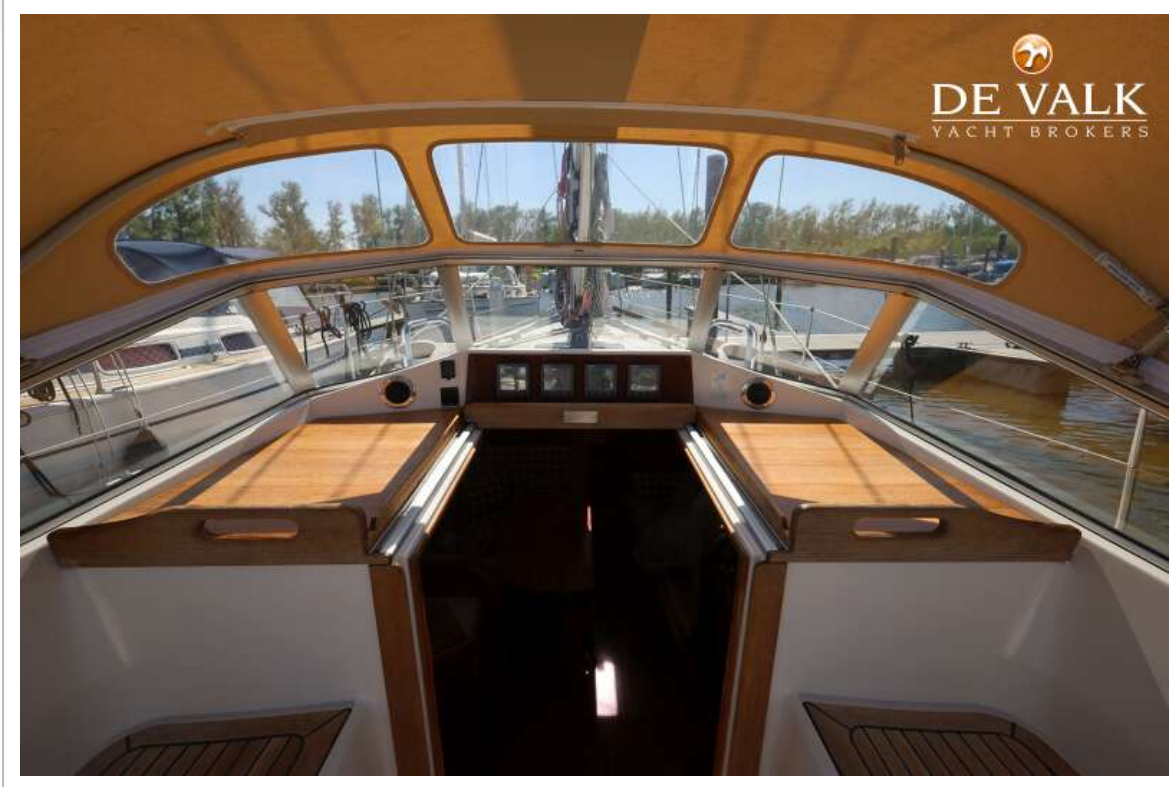
# NAJAD 373



# NAJAD 373



# NAJAD 373



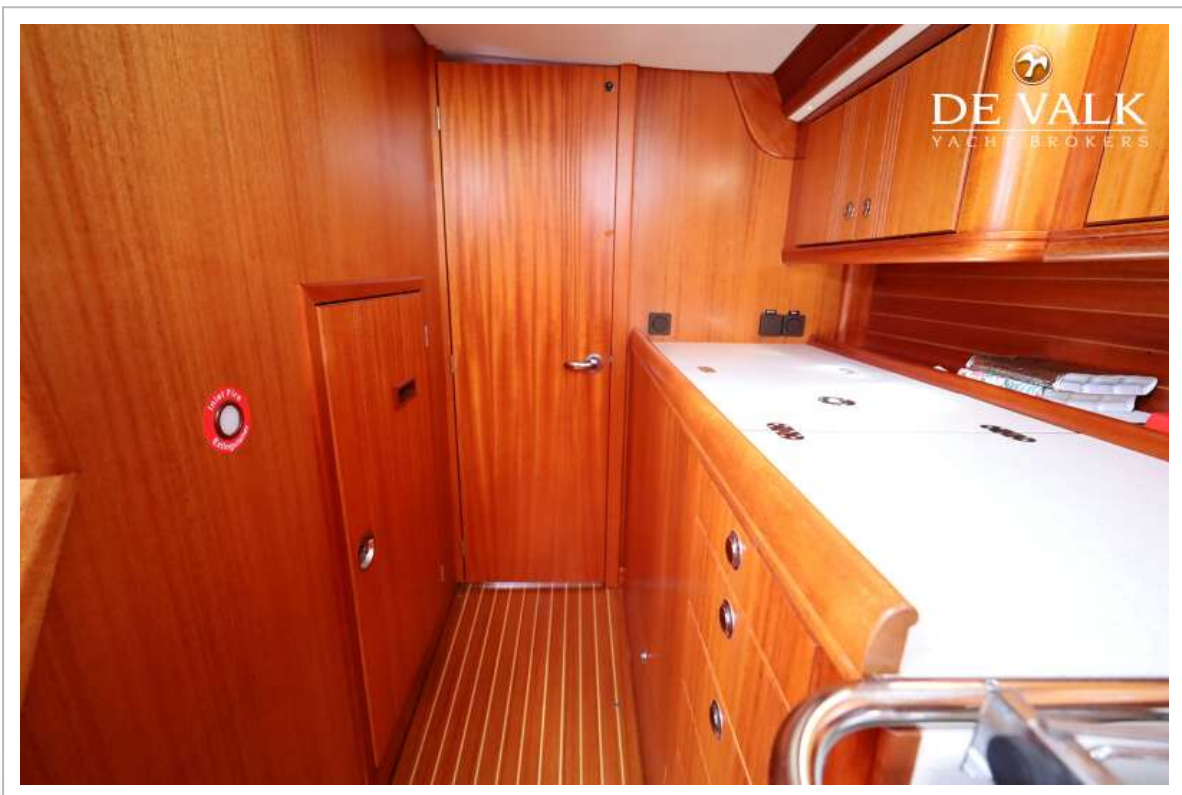
# NAJAD 373



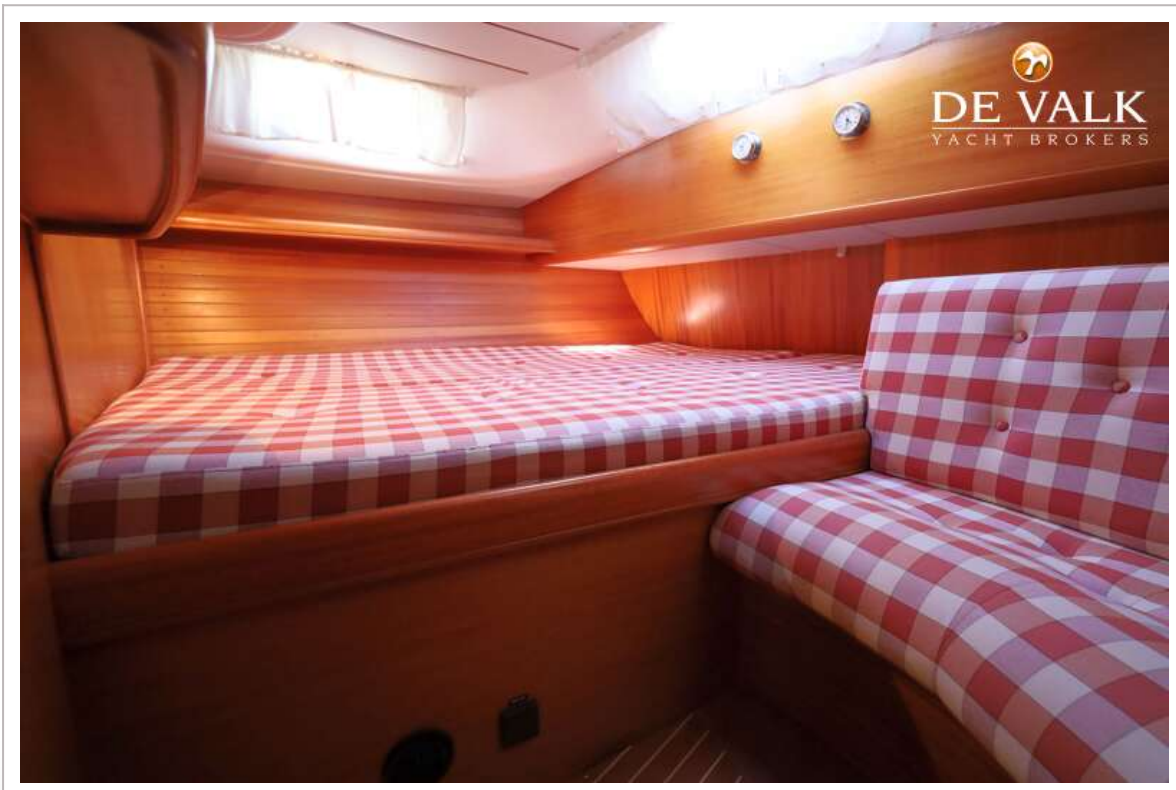
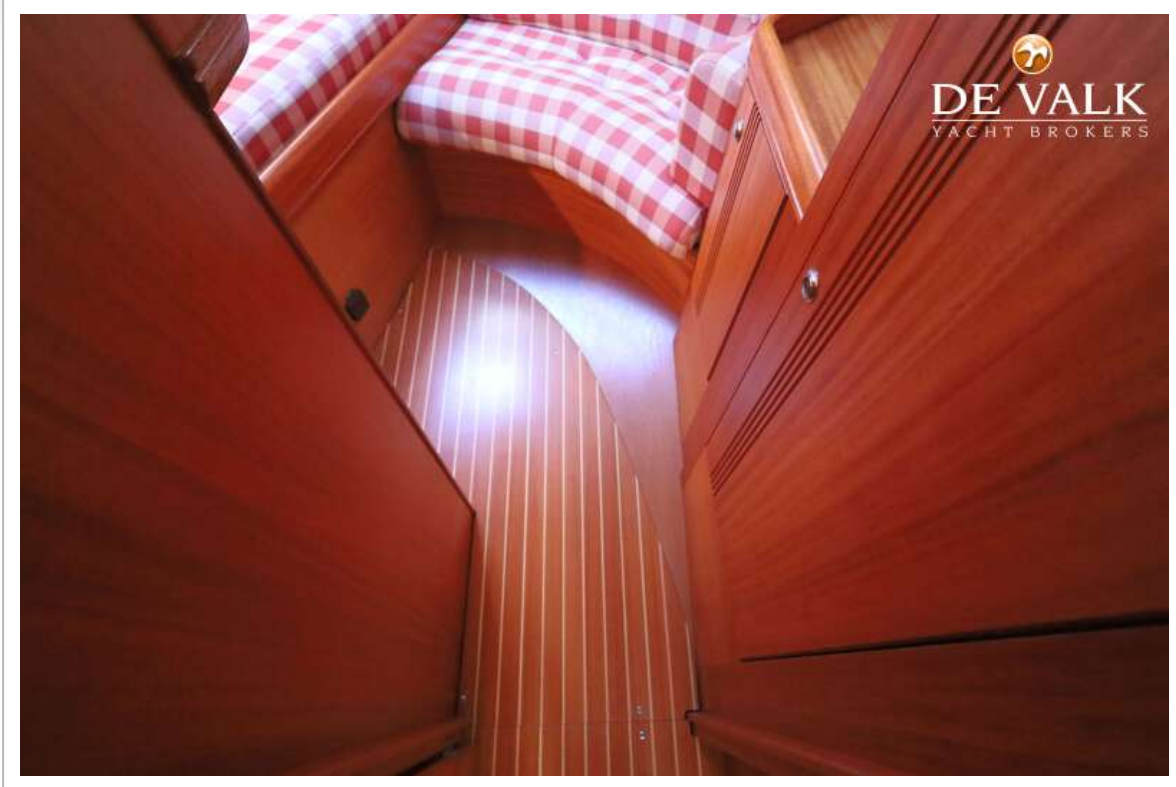
# NAJAD 373

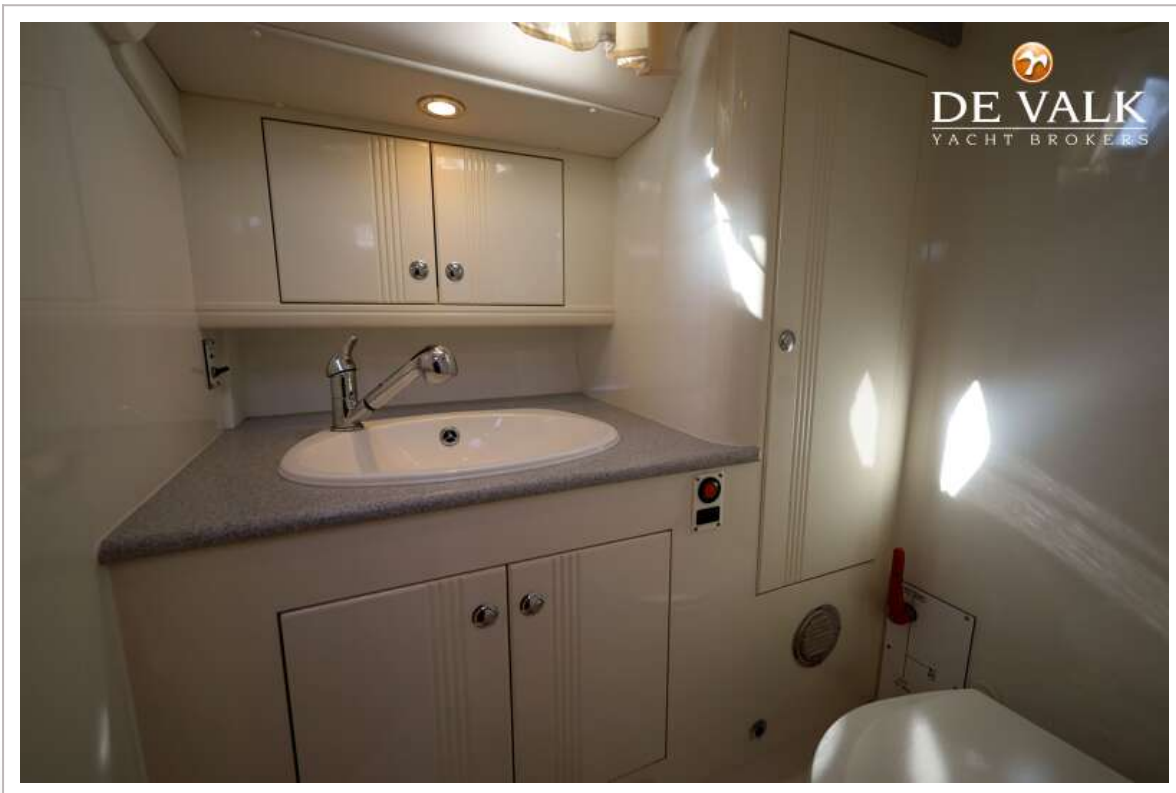


# NAJAD 373

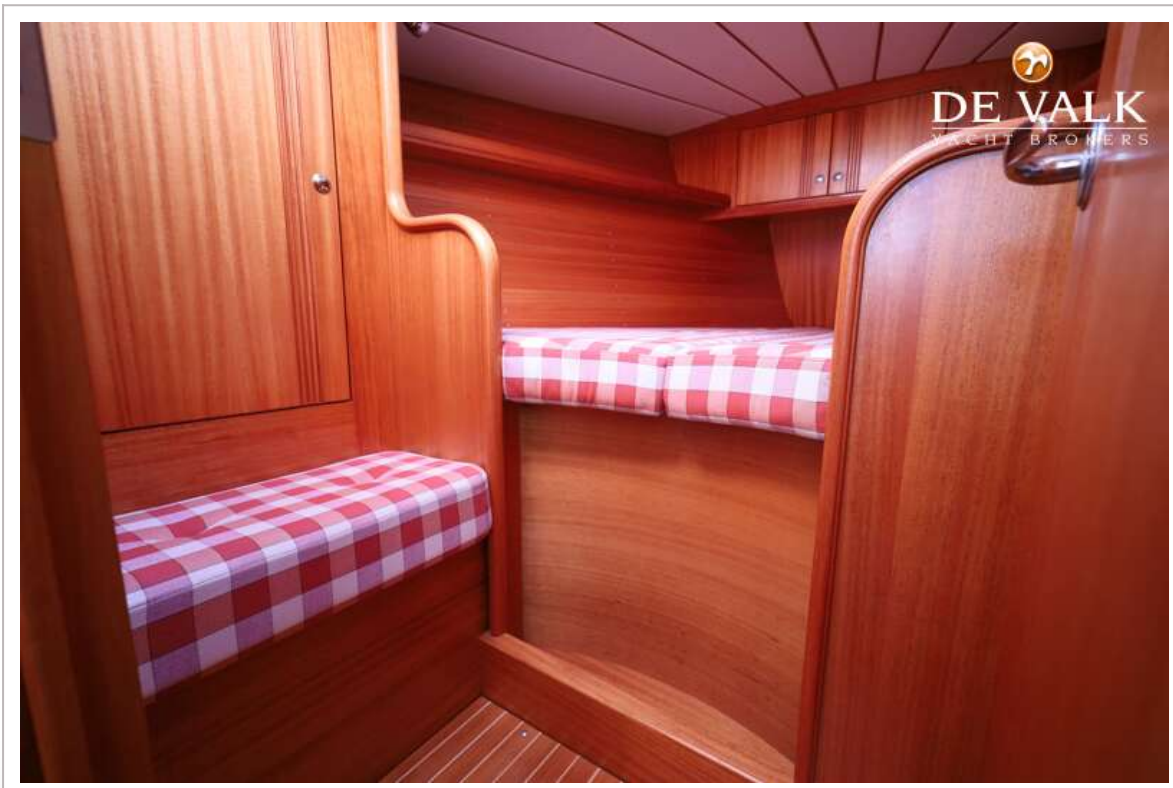


# NAJAD 373

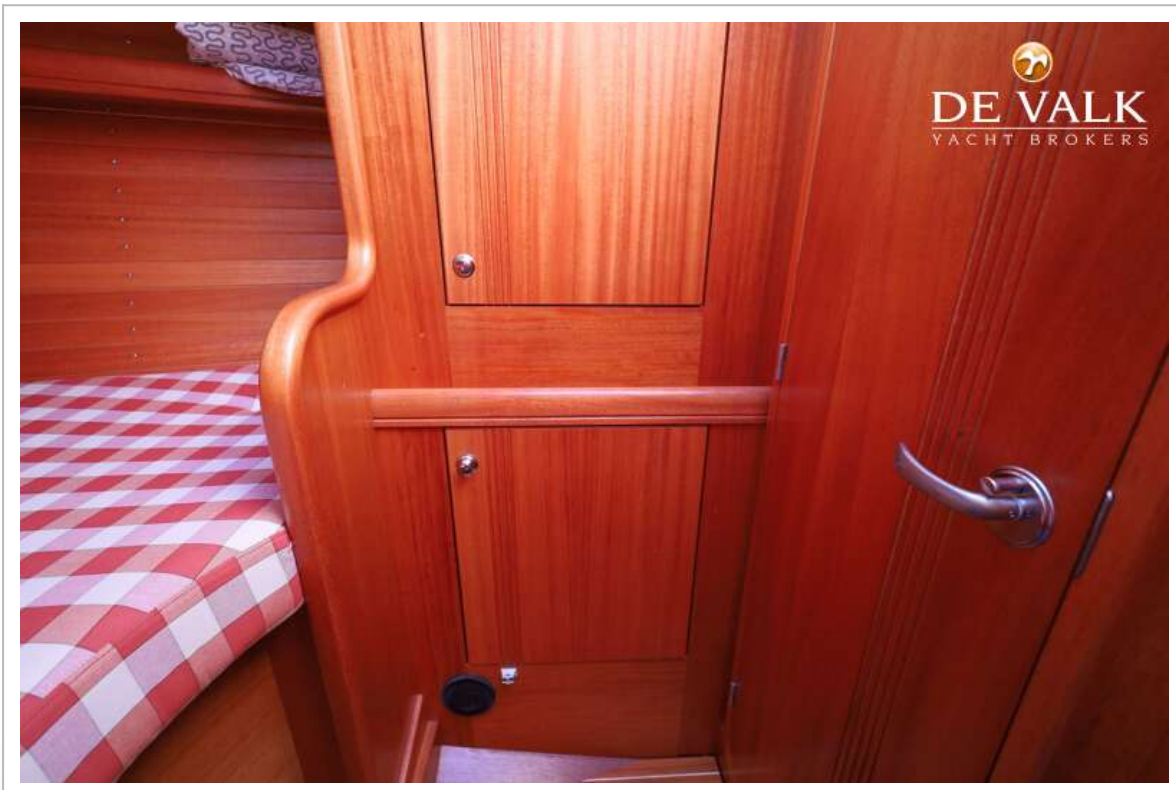




# NAJAD 373



# NAJAD 373



# NAJAD 373



# NAJAD 373



