



DE VALK  
YACHT BROKERS



## HALLBERG RASSY 352



DE VALK  
YACHT BROKERS

## BROKER'S COMMENTS

Designed by the legendary Olle Enderlein, this model has earned its reputation as a dependable bluewater cruiser, combining solid construction with elegant Scandinavian design. The center cockpit layout provides both safety and comfort at sea, while the well-thought-out deck design ensures easy handling for short-handed sailing.

*Reinoud Bicker Caarten*

## SPECIFICATIONS

<b>Dimensions</b>	10.54 x 3.38 x 1.67 (m)	<b>Builder</b>	Hallberg Rassy VARVS AB
<b>Built</b>	1978	<b>Cabins</b>	2
<b>Material</b>	GRP	<b>Berths</b>	6
<b>Engine(s)</b>	1 x Volvo Penta MD21A diesel	<b>Hp/Kw</b>	55.00 (hp), 40.48 (kw)
<b>Asking price</b>	€ 64.000 (VAT Paid)	<b>Lying</b>	contact Portugal

## CONTACT

<b>Sales office</b>	De Valk Portugal	<b>Telephone</b>	+351 308 812321
<b>Address</b>	Edifício Administrativo - Ponta da Areia 8500 - 345 Portimão PT	<b>E-mail</b>	portugal@devalk.nl

## DISCLAIMER

These particulars are given in good faith as supplied but cannot be guaranteed.



# HALLBERG RASSY 352

## GENERAL

<b>Model</b>	HALLBERG RASSY 352
<b>Type</b>	sailing yacht
<b>LOA (m)</b>	10,54
<b>Beam (m)</b>	3,38
<b>Draft (m)</b>	1,67
<b>Air draft (m)</b>	15,50
<b>Headroom (m)</b>	1,90
<b>Year built</b>	1978
<b>Builder</b>	Hallberg Rassy VARVS AB
<b>Country</b>	Sweden
<b>Designer</b>	Christof Rassy & Ole Anderlein
<b>Displacement (t)</b>	6,7
<b>Ballast (tonnes)</b>	3
<b>CE norm</b>	A
<b>Hull material</b>	GRP
<b>Hull colour</b>	off-white
<b>Hull shape</b>	round-bilged
<b>Keel type</b>	fin keel
<b>Superstructure (mm)</b>	GRP
<b>Rubbing strake</b>	yes
<b>Deck material</b>	GRP
<b>Deck finish</b>	teak
<b>Cockpit deck finish</b>	teak
<b>Antifouling (year)</b>	2025
<b>Window frame</b>	aluminium
<b>Window material</b>	tempered glass
<b>Deckhatch</b>	4
<b>Portholes</b>	aluminium 7
<b>Fuel tank (litre)</b>	GRP 180L
<b>Fuel tank 2 (litre)</b>	60L



Level indicator (fuel tank)	yes
Freshwater tank (litre)	GRP 300L
Wheel steering	yes
Outside helm position	yes

## ACCOMMODATION

Cabins	2
Berths	6
Interior	mahogany
Floor	carpet Mahogany
Open cockpit	yes
Saloon	yes
Headroom saloon (m)	1,85
Navigation center	yes
Chart table	yes
Aft Cabin	yes
Convertible berth	2 in saloon
Galley	yes
Countertop	wood
Sink	stainless steel Double
Cooker	calor gas 3 burner
Oven	yes
Freezer	yes
Hot water system	220V + engine
Water pressure system	yes
Manual and/or foot pump	yes
Kettle	yes
Hot water tap	yes
Crockery	yes
Owners cabin	v-bed
Bed length (m)	2,0 x 0,70



Wardrobe	drawers and shelves
Bathroom	separate
Toilet	separate
Toilet system	manual
Wash basin	yes
Shower	separate
Guest cabin 1	v-bed
Bed length (m)	2m x 0,70
Wardrobe	drawers and shelves
Bathroom	separate

## MACHINERY

No of engines	1
Make	Volvo Penta
Type	MD21A
HP	55
kW	40.48
Fuel	diesel
Year installed	1978
Maximum speed (kn)	8
Cruising speed (kn)	6
Consumption (l/hr)	6,7
Engine cooling system	seawater
Engine controls	bowden cable
Exhaust	dry
Propeller type	fixed
Propeller blades	3
Propeller shaft material	stainless steel
Shaft lubrication	water
Electric bilge pump	yes
Electrical installation	12v & 240V



Start battery	70Ah
Service battery	2x 90Ah Blei
Battery charger	Sterling
Wind generator	yes
Shorepower	with cable

## NAVIGATION

Compass	yes
Depth sounder	yes
Autopilot	yes
Radar	yes
GPS	yes
Plotter	9 inch
Electronic chart(s)	EU
AIS receiver	yes
Radio receiver	yes
EPIRB	yes
Navigation lights	yes

## EQUIPMENT

Fixed windscreen	yes
Sprayhood	yes
Sprayhood with grab rail	yes
Cockpit cover	yes
Winter cover	yes
Cockpit cushions	yes
Cockpit table	yes
Boarding ladder	yes
Anchor	Danforth
Anchor chain	25m 8mm
Windlass	mechanical



Dinghy	inflatable Zodiac 2,5m
Outboard	Honda 2025 2HP
Outboard support	yes
Davits	yes
Sea railing	wire
Grab rail (superstructure)	stainless steel
Pushpit	yes
Life raft	container
Life raft (pers)	6x
Lifejackets	3
Safety harness	3
Fenders	6
Mooring lines	8
Tools	yes
TV	yes
Cockpit speakers	yes
Speakers in salon	yes
Clock - barometer	yes
Fire extinguisher	yes

## RIGGING

Rigging	fractional
Standing rigging	wire
Brand mast	Seldén
Material mast	aluminium
Spreaders	2
Keel stepped mast	yes
Mainsail	yes
Mainsail cover	Lazy bagwith cover
Jib	yes
Genoa	yes



<b>Genoa furler</b>	yes
<b>Spinnaker</b>	yes
<b>Reefing System</b>	quick-one-line-reefing
<b>Boomvang</b>	mechanical and tackle
<b>Primary sheet winch</b>	`2x Lewmar ST 40
<b>Secondary sheet winch</b>	2x Lewmar ST 30
<b>Halyard winches</b>	2x Lewmar ST 40
<b>Winchcovers</b>	yes



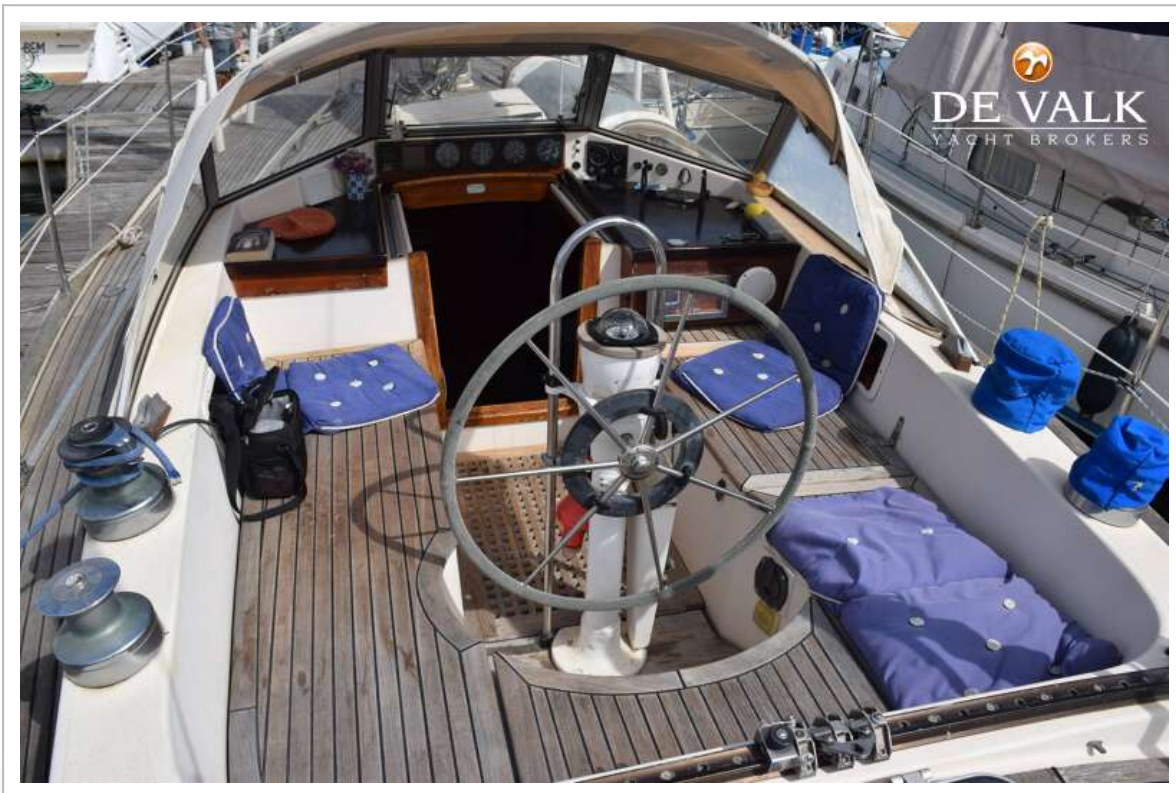
# HALLBERG RASSY 352



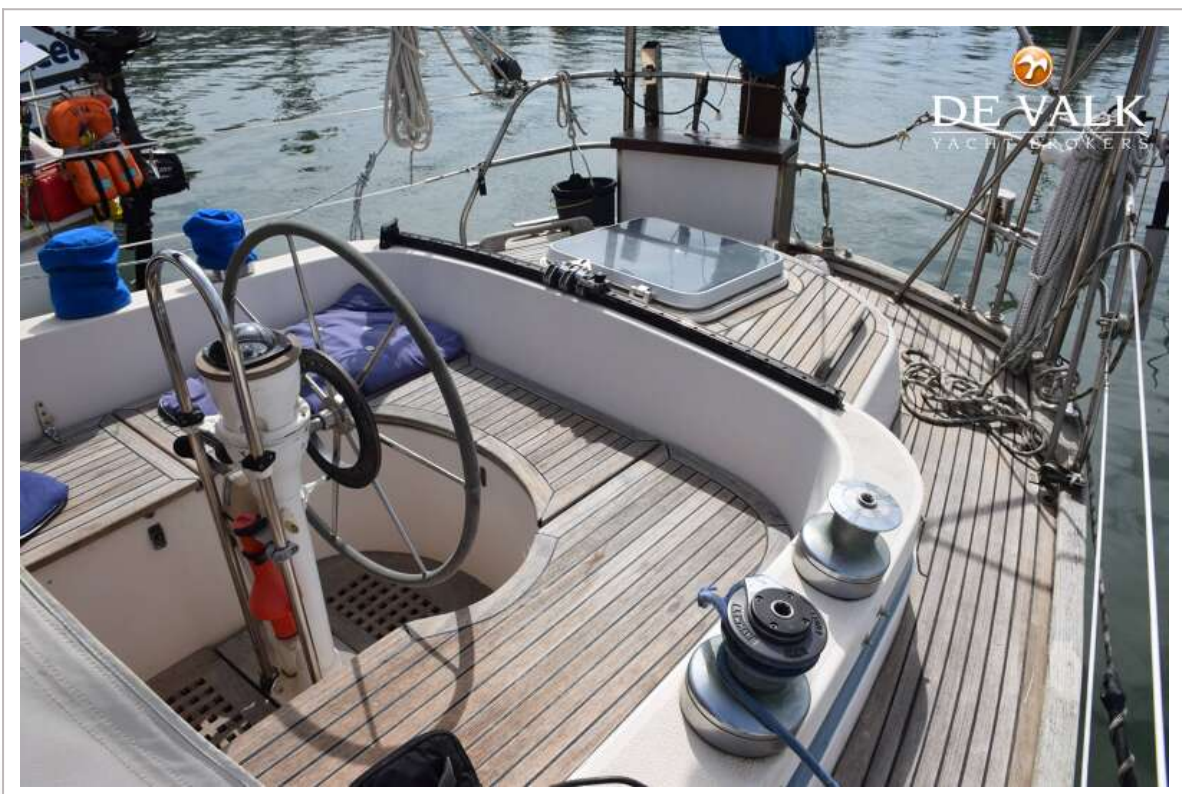
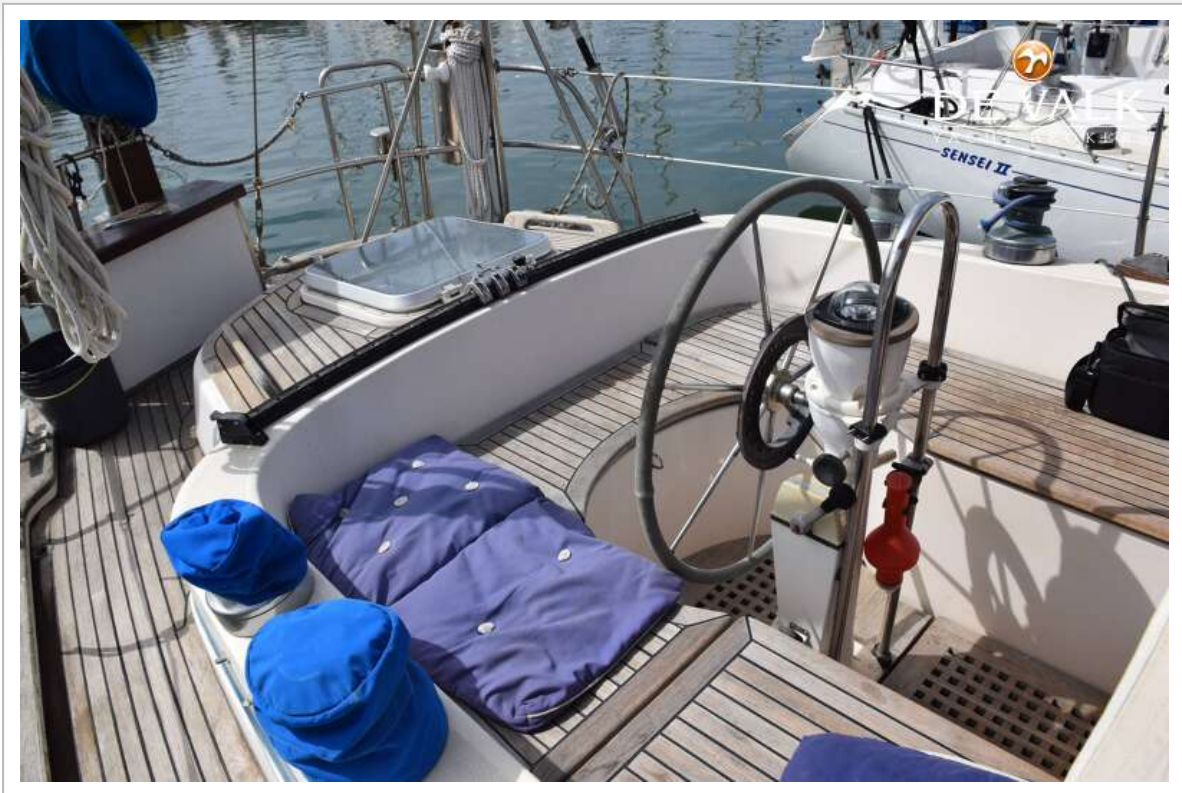
# HALLBERG RASSY 352



# HALLBERG RASSY 352



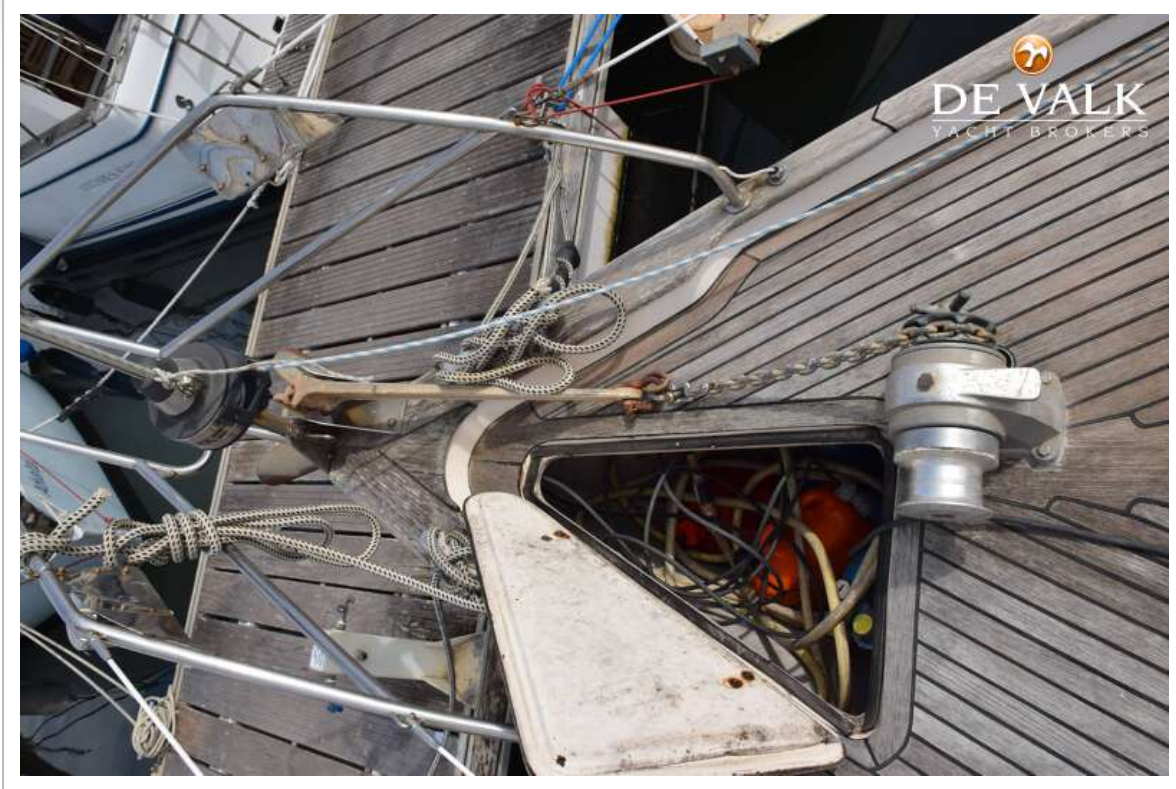
# HALLBERG RASSY 352



# HALLBERG RASSY 352



# HALLBERG RASSY 352



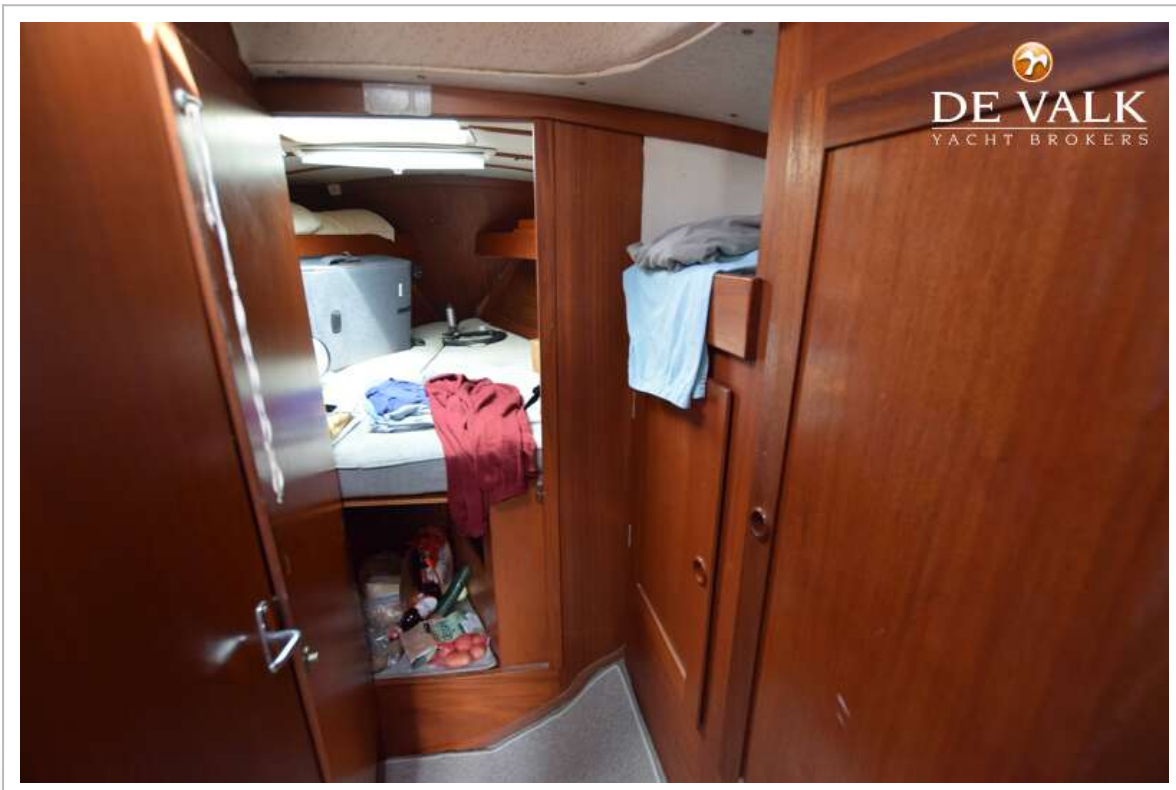
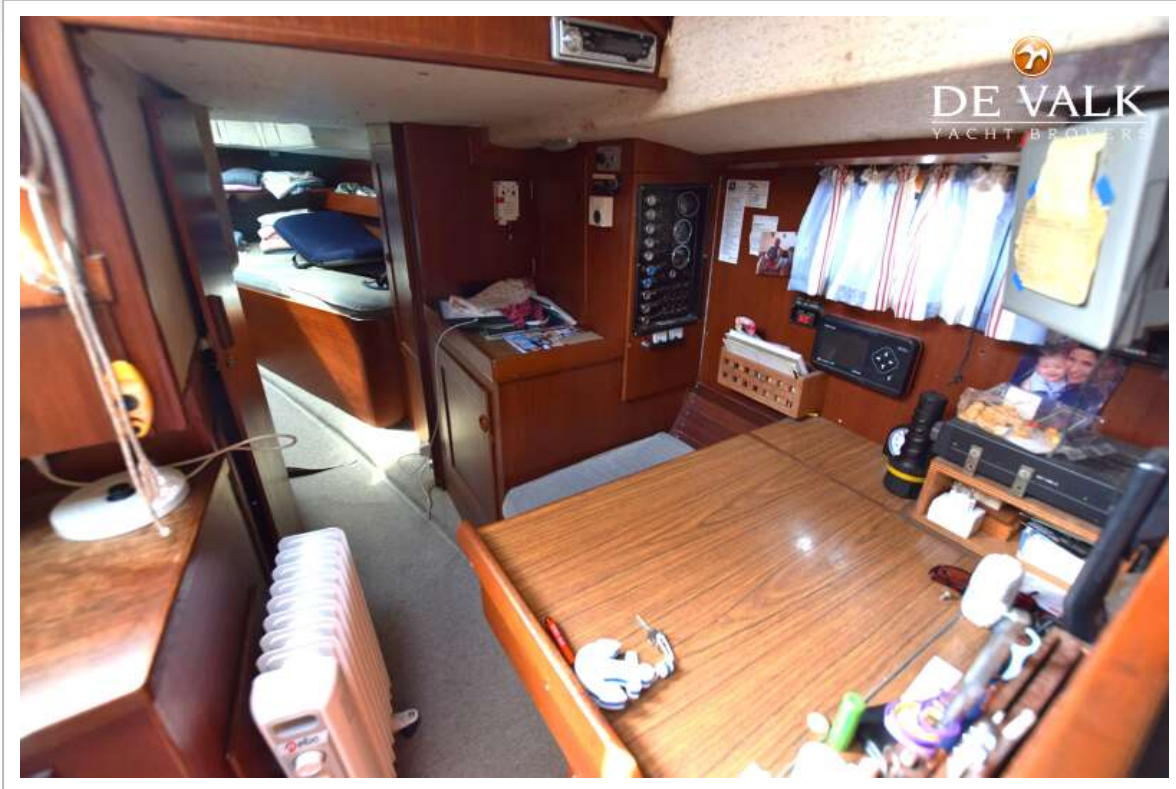
# HALLBERG RASSY 352



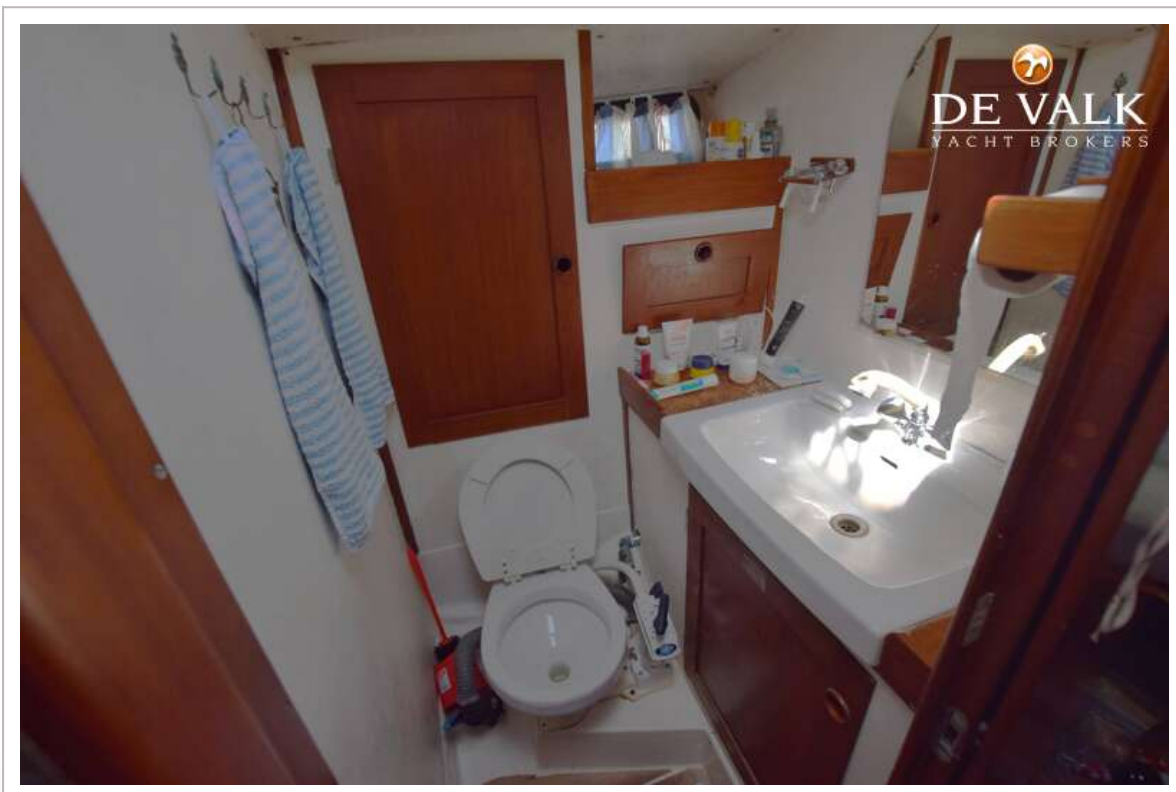
# HALLBERG RASSY 352



# HALLBERG RASSY 352



# HALLBERG RASSY 352



# HALLBERG RASSY 352



# HALLBERG RASSY 352



  
**DE VALK**  
YACHT BROKERS

