



DE VALK
YACHT BROKERS



SKORPION 44



DE VALK
YACHT BROKERS

BROKER'S COMMENTS

“Discover this robust 13.00 x 3.80 metre ketch-rigged sailing yacht. Built by Feltz Werft, renowned for building purpose-driven, seaworthy yachts with classic, timeless lines. Multiple upgrades carried out over the past 10 years, including a new teak deck and an engine overhaul. Nevertheless, this yacht is offered as a project, with further work required. She offers excellent potential for a hands-on owner looking to create a go-anywhere liveaboard yacht.”

Reinoud Bicker Caarten

SPECIFICATIONS

Dimensions	13.00 x 3.84 x 1.70 (m)	Builder	Fa. Feltz
Built	1985	Cabins	3
Material	Steel	Berths	8
Engine(s)	1 x Perkins Prima M 50 diesel	Hp/Kw	50.00 (hp), 36.80 (kw)
Asking price	€ 40.000 (VAT)	Lying	contact Portugal

CONTACT

Sales office	De Valk Portugal	Telephone	+351 308 812321
Address	Edifício Administrativo - Ponta da Areia 8500 - 345 Portimão PT	E-mail	portugal@devalk.nl

DISCLAIMER

These particulars are given in good faith as supplied but cannot be guaranteed.



GENERAL

Model	SKORPION 44
Type	sailing yacht
LOA (m)	13,00
Beam (m)	3,84
Draft (m)	1,70
Air draft (m)	16,20
Headroom (m)	2,00
Year built	1985
Builder	Fa. Feltz
Country	Germany
Displacement (t)	12,5
Ballast (tonnes)	lead 4,5
CE norm	A
Hull material	steel
Hull colour	off-white
Hull shape	round-bilged
Keel type	fin keel
Superstructure material	wood
Rubbing strake	wood
Deck material	woodcore New 2016
Deck finish	teak New 2016
Superstructure deck finish	teak
Cockpit deck finish	teak
Antifouling (year)	2023
Window frame	wood
Window material	double glazing
Deckhatch	4
Portholes	8
Fuel tank (litre)	stainless steel 1 x 100 liter
Freshwater tank (litre)	400L



Blackwater tank (litre)	100 liter, installed 2016
Wheel steering	cable steering
Outside helm position	cable steering
More info on paintwork	Maintenance needed

ACCOMMODATION

Cabins	3
Berths	8
Interior	mahogany
Floor	wood
Deck saloon	Wooden structure
Headroom saloon (m)	2.15m
Aft Cabin	yes
Dinette to convert into berth	yes
Galley	yes
Countertop	wood
Sink	yes
Hot water system	220V + engine 40 liter (2004)
Water pressure system	electrical
Hot water tap	yes
Bathroom	shared
Toilet	shared
Toilet system	manual
Wash basin	in the bathroom

MACHINERY

No of engines	1
Make	Perkins Prima
Type	M 50
HP	50
kW	36.80



Fuel	diesel
Year installed	1993
Year of overhaul	150 engine hrs since then 2016
Maximum speed (kn)	8
Cruising speed (kn)	6
Drive	shaft
Shaft seal	yes
Engine controls	mechanical
Bowthruster	electric 95Kgf (2009)
Exhaust	watercooled Vetus
Propeller type	feathering
Propeller blades	3
Propeller shaft material	stainless steel
Batteries	yes
Bowthruster battery	yes

NAVIGATION

Compass	yes
Navigation lights	yes

EQUIPMENT

Bathing platform	yes
Gangway	yes
Anchor	yes
Anchor chain	yes
Windlass	yes
Outboard	yes
Davits	yes

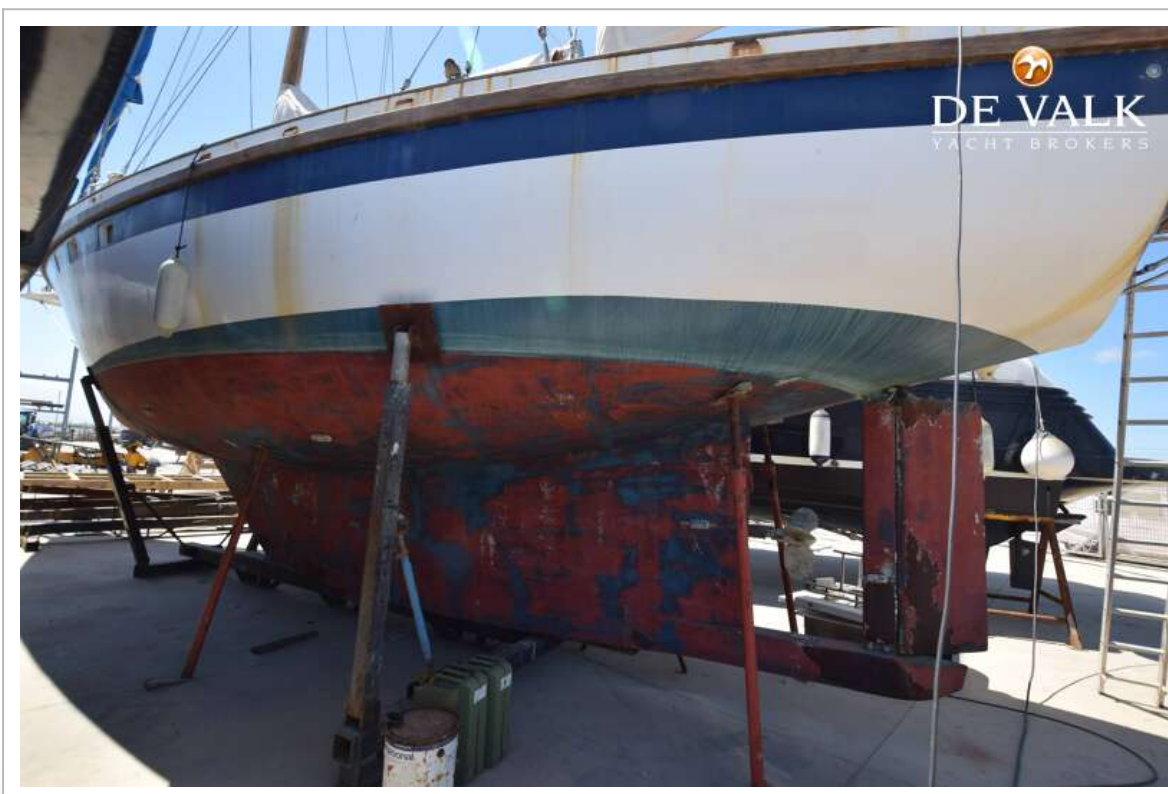
RIGGING



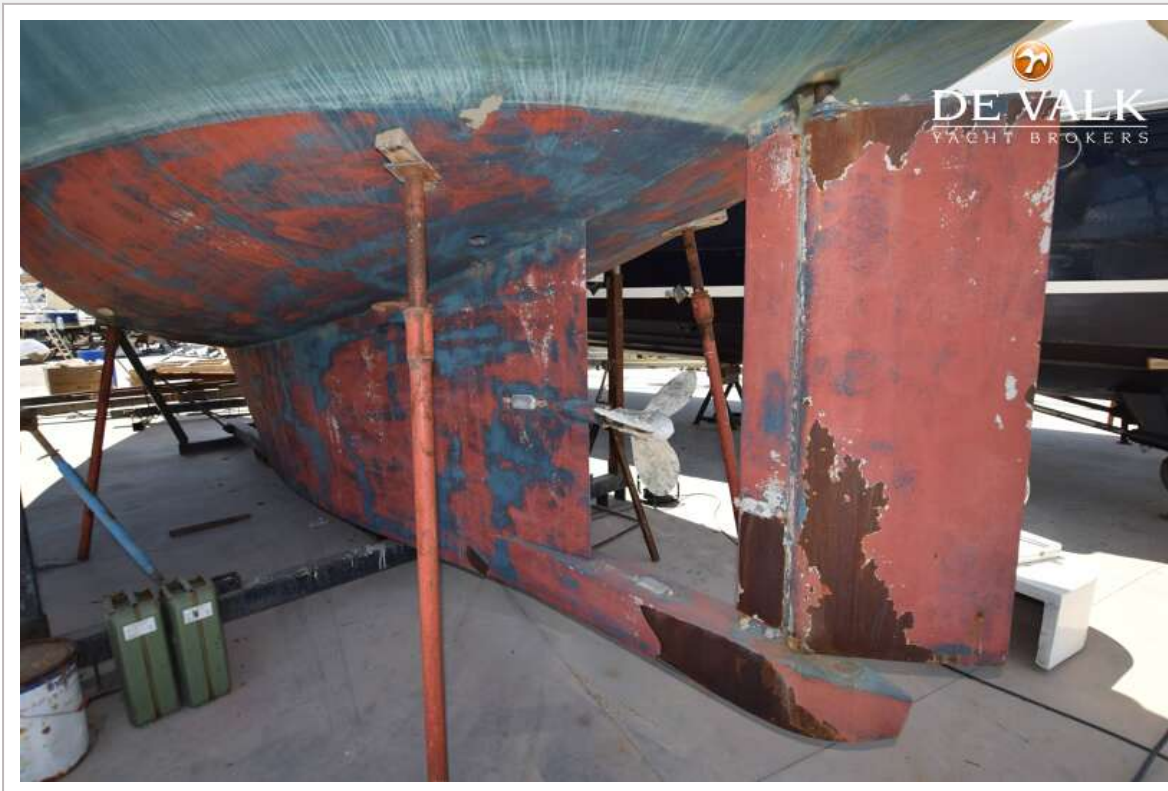
Rigging	ketch
Standing rigging	wire
Material mast	wood
Mainsail	yes
Mainsail cover	yes
Genoa	yes
Genoa furler	yes
Multifunctional winches	yes

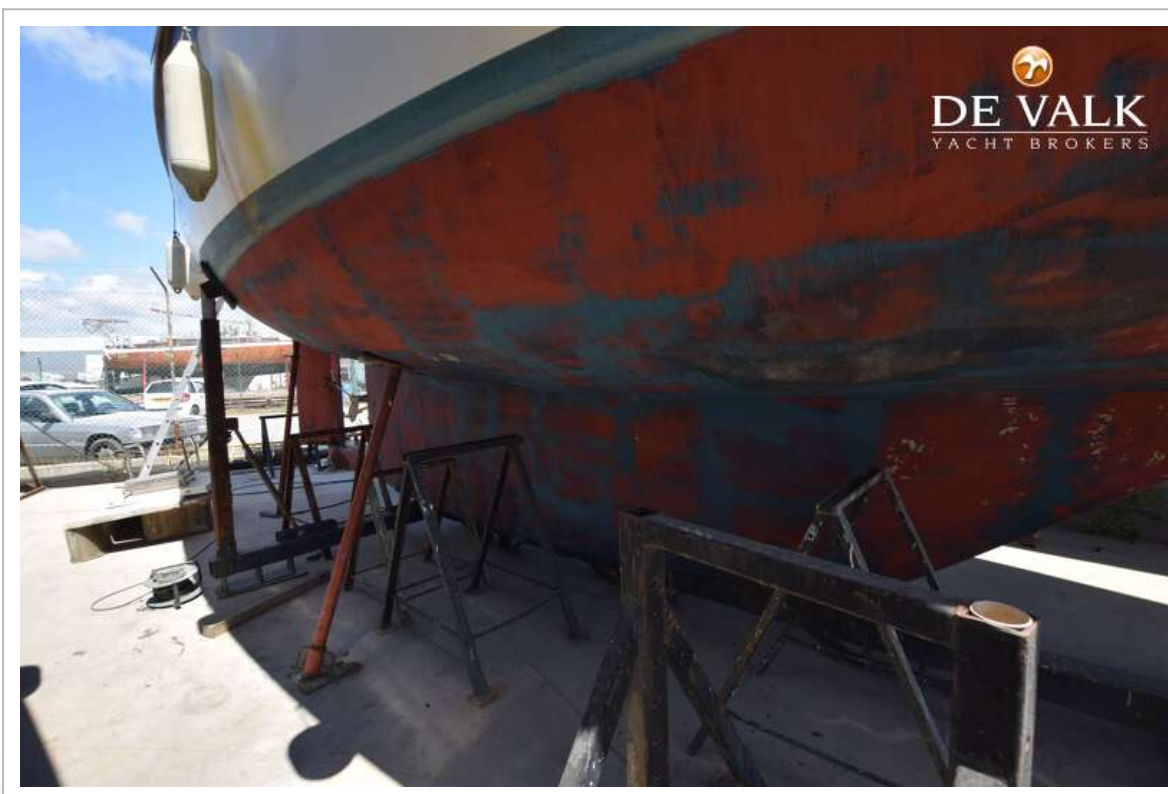
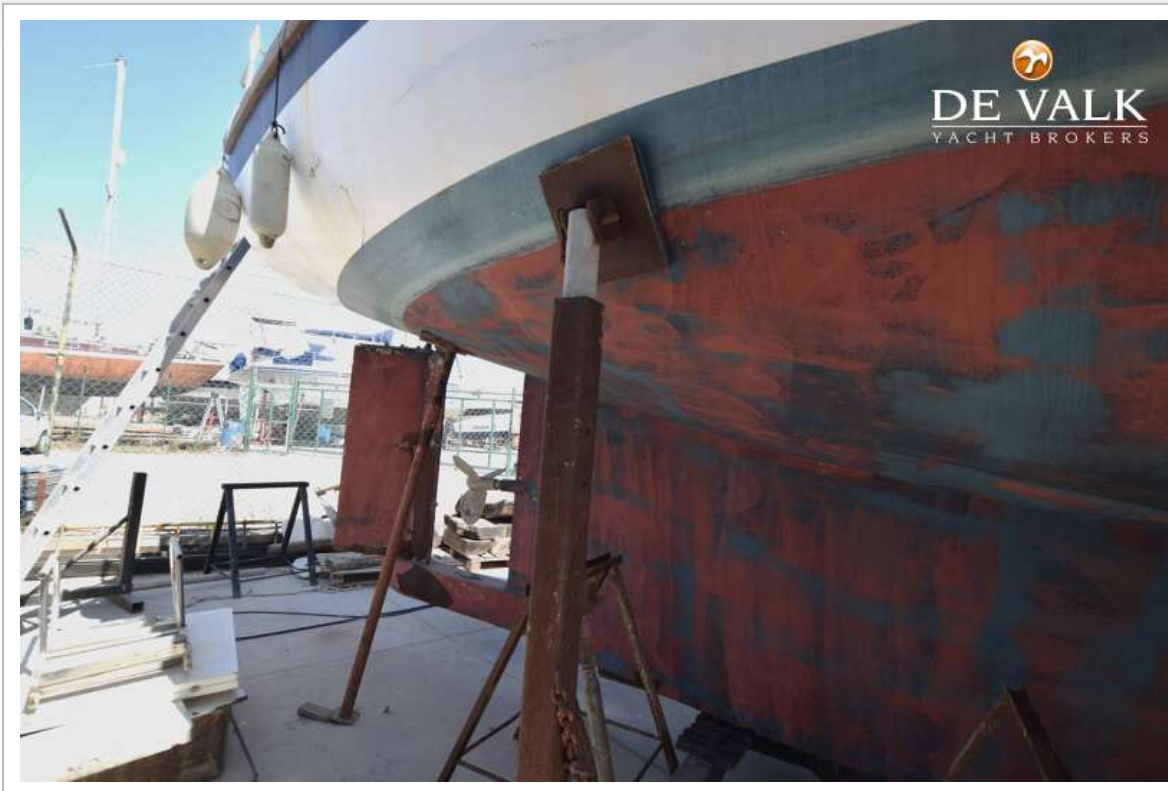


SKORPION 44

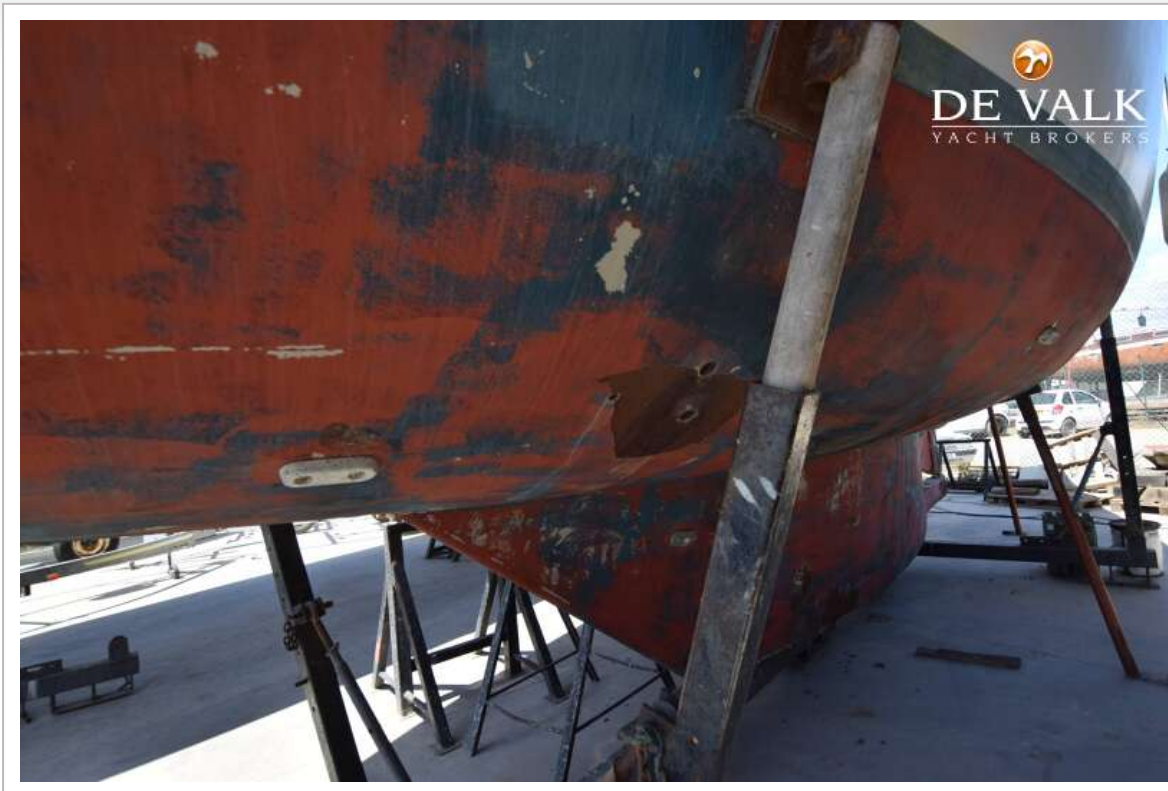


SKORPION 44



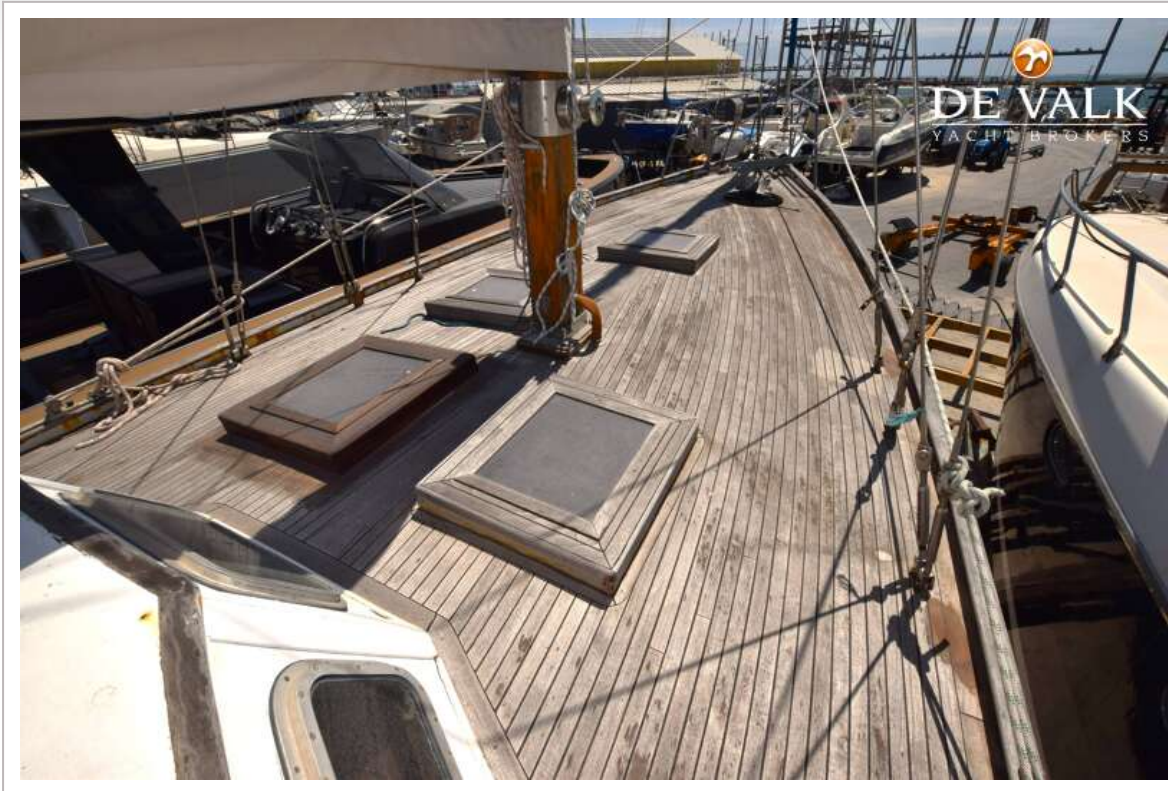


SKORPION 44

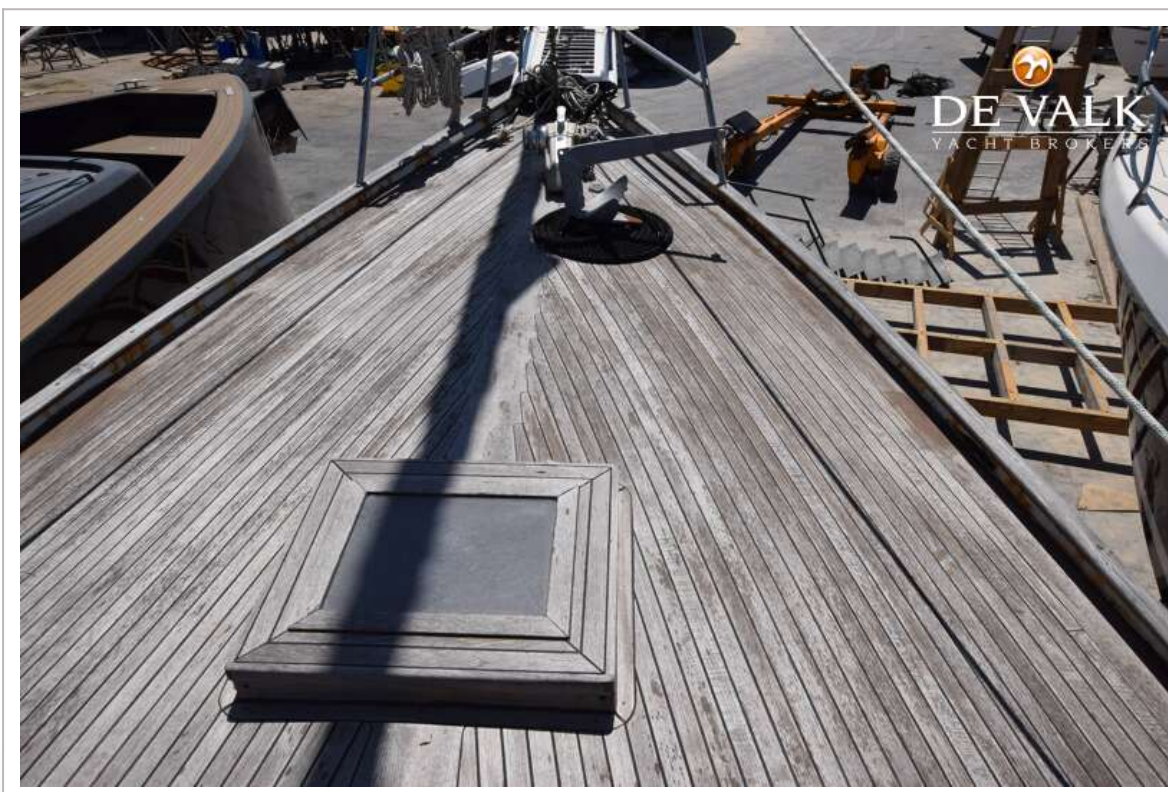
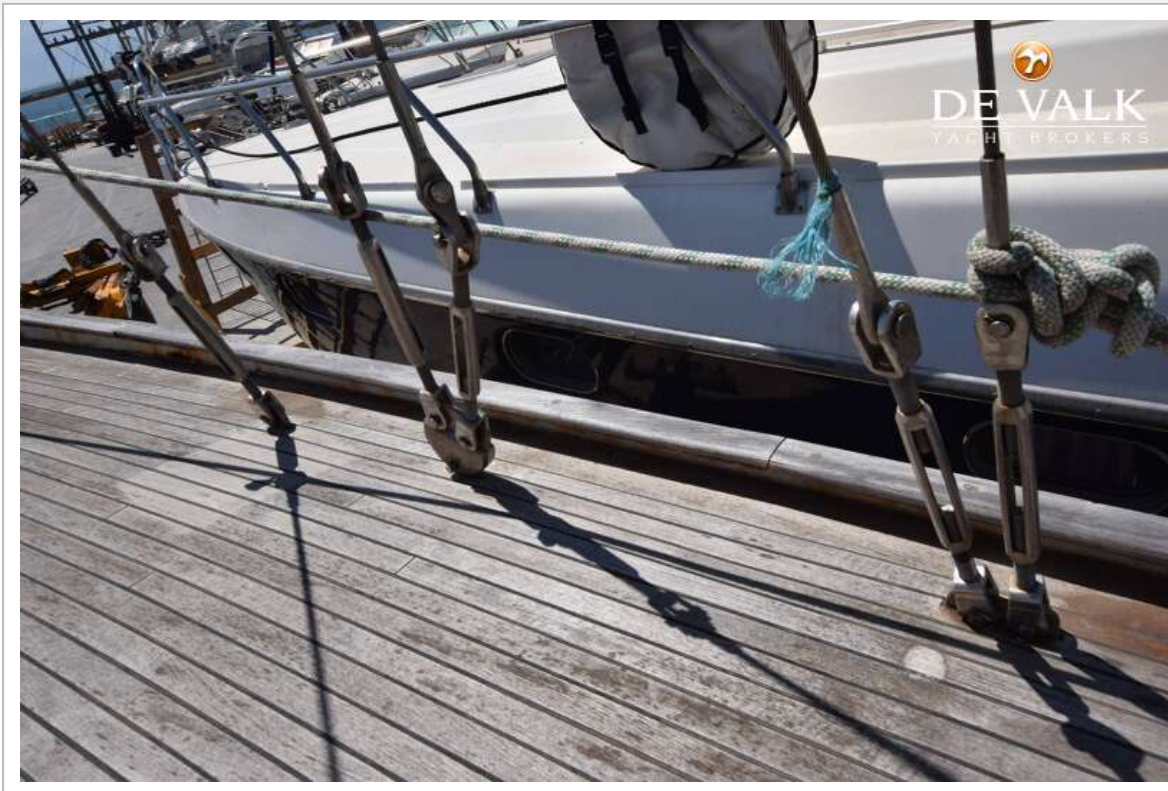


SKORPION 44

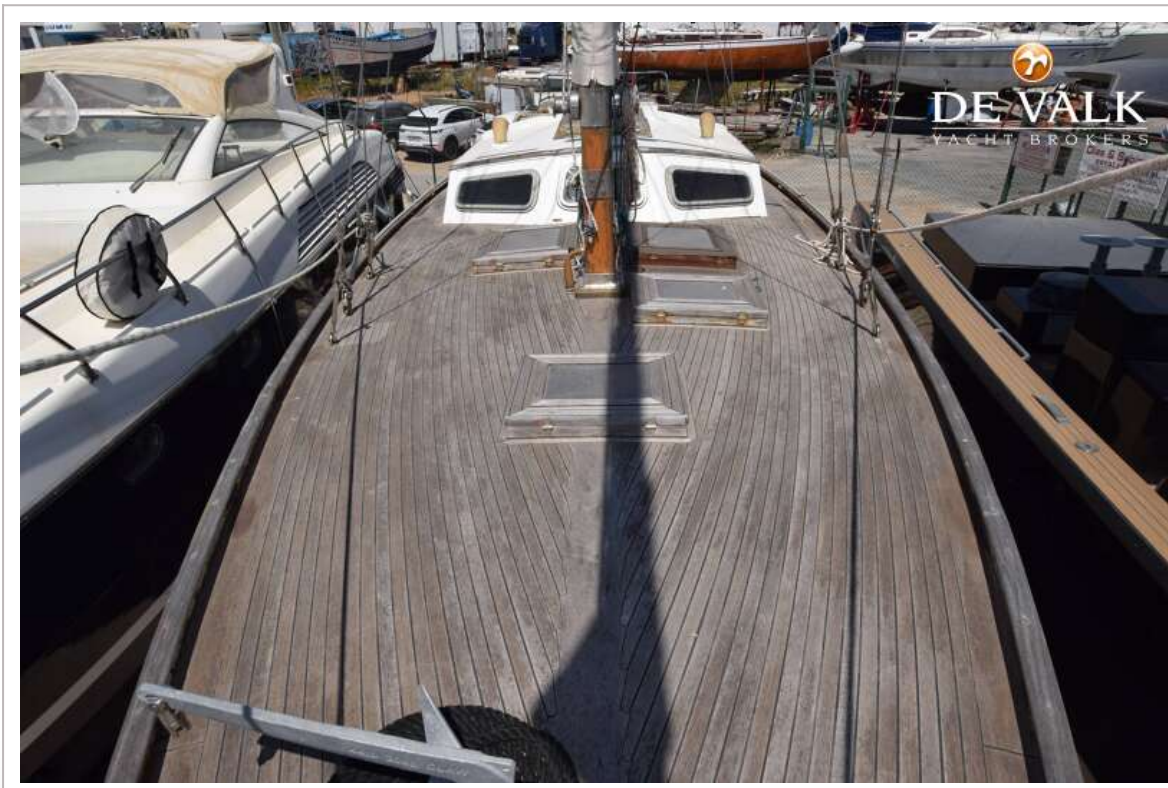
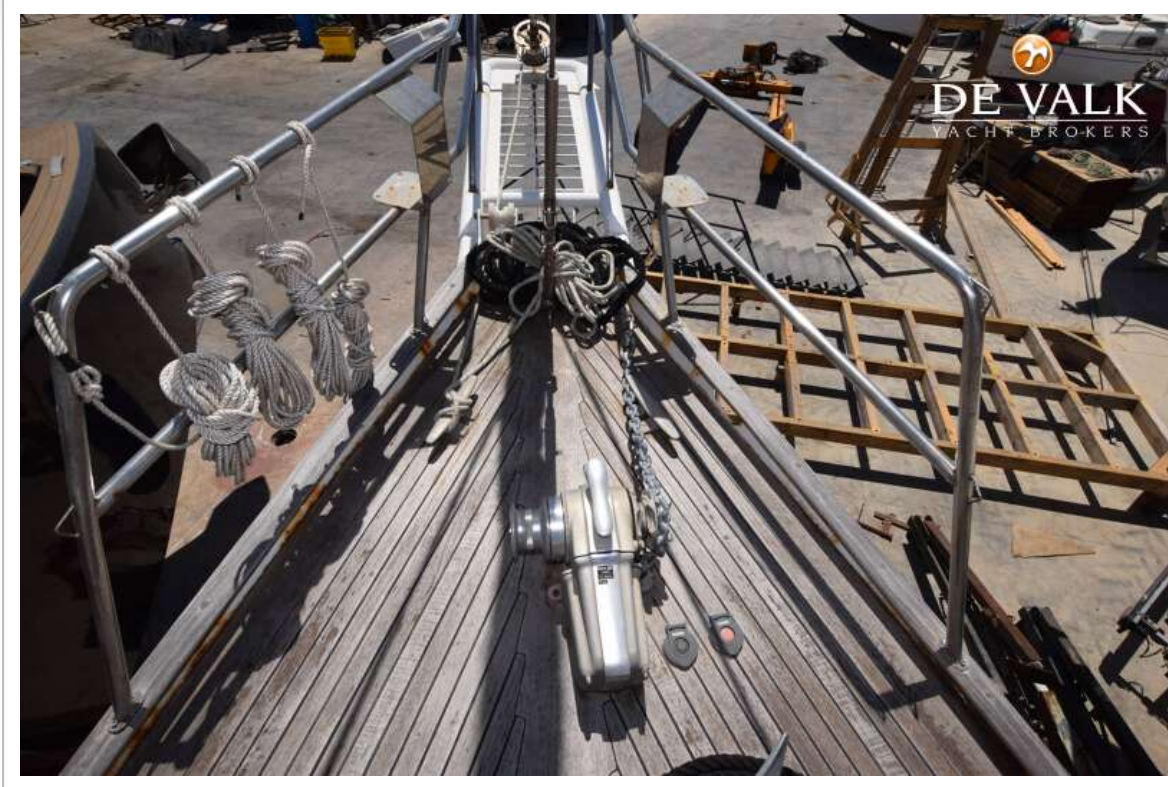




SKORPION 44



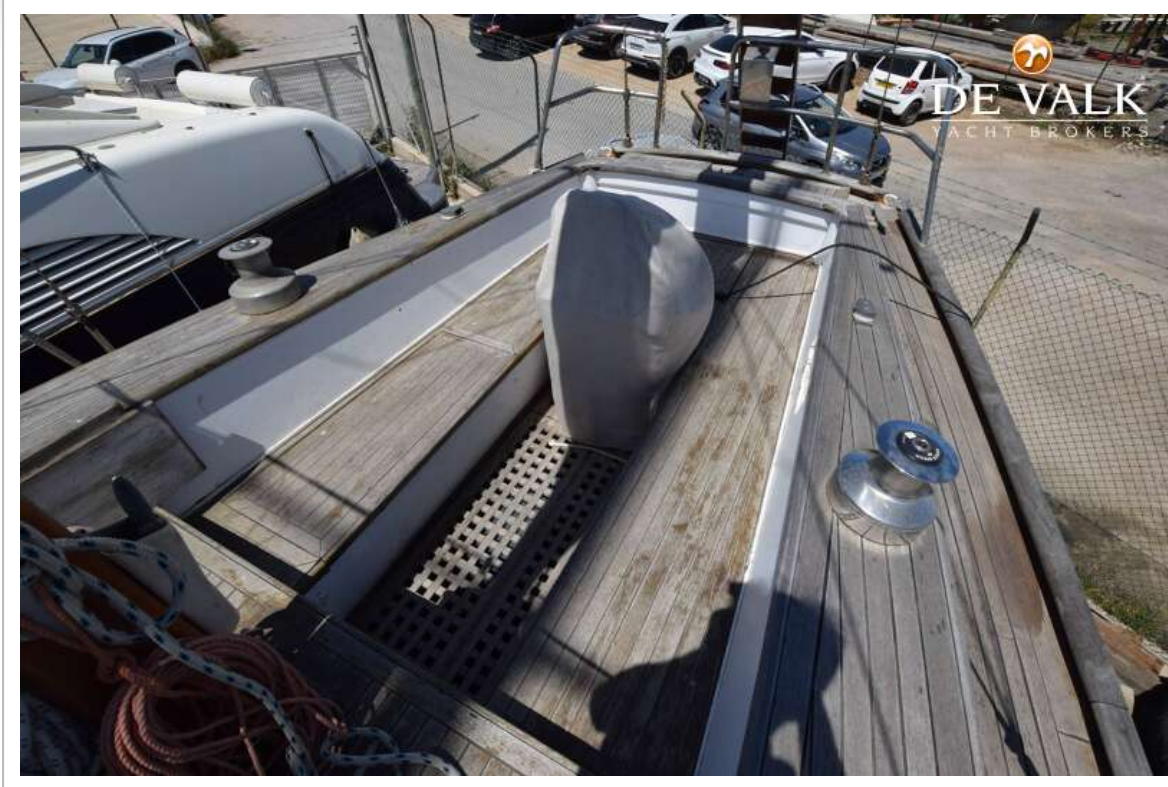
SKORPION 44



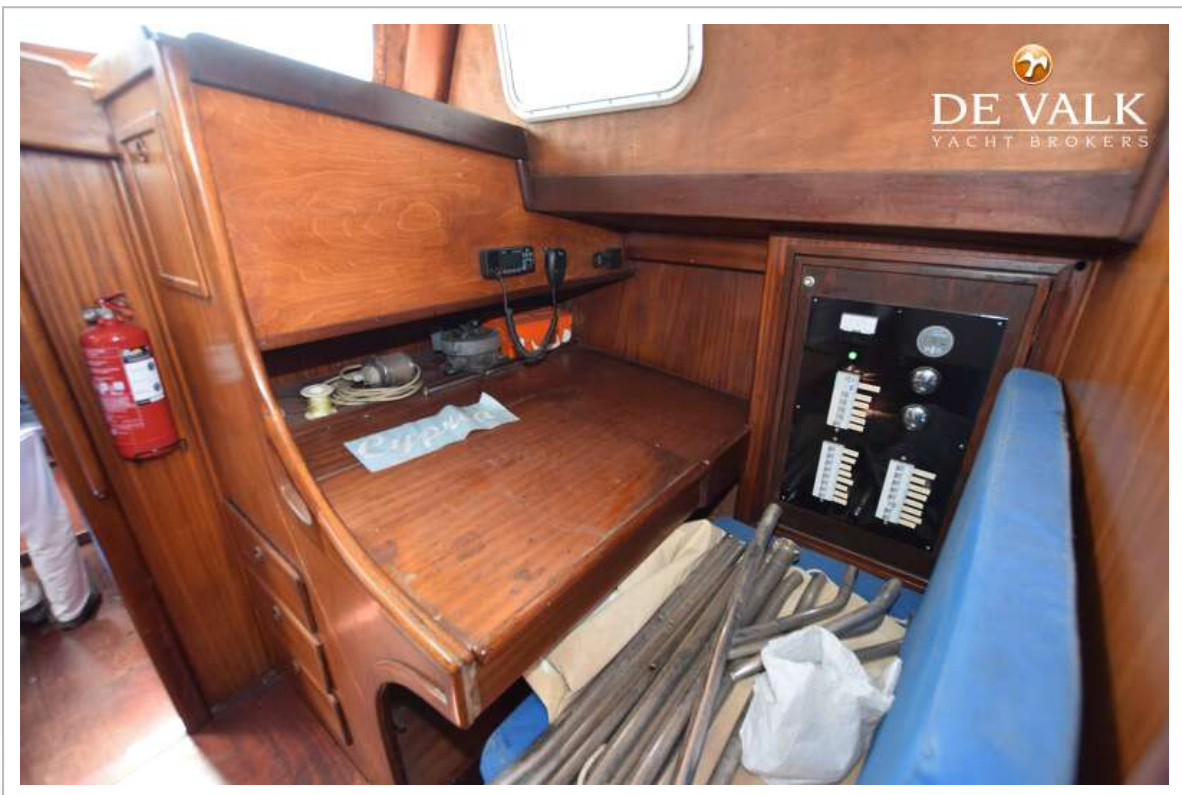
SKORPION 44



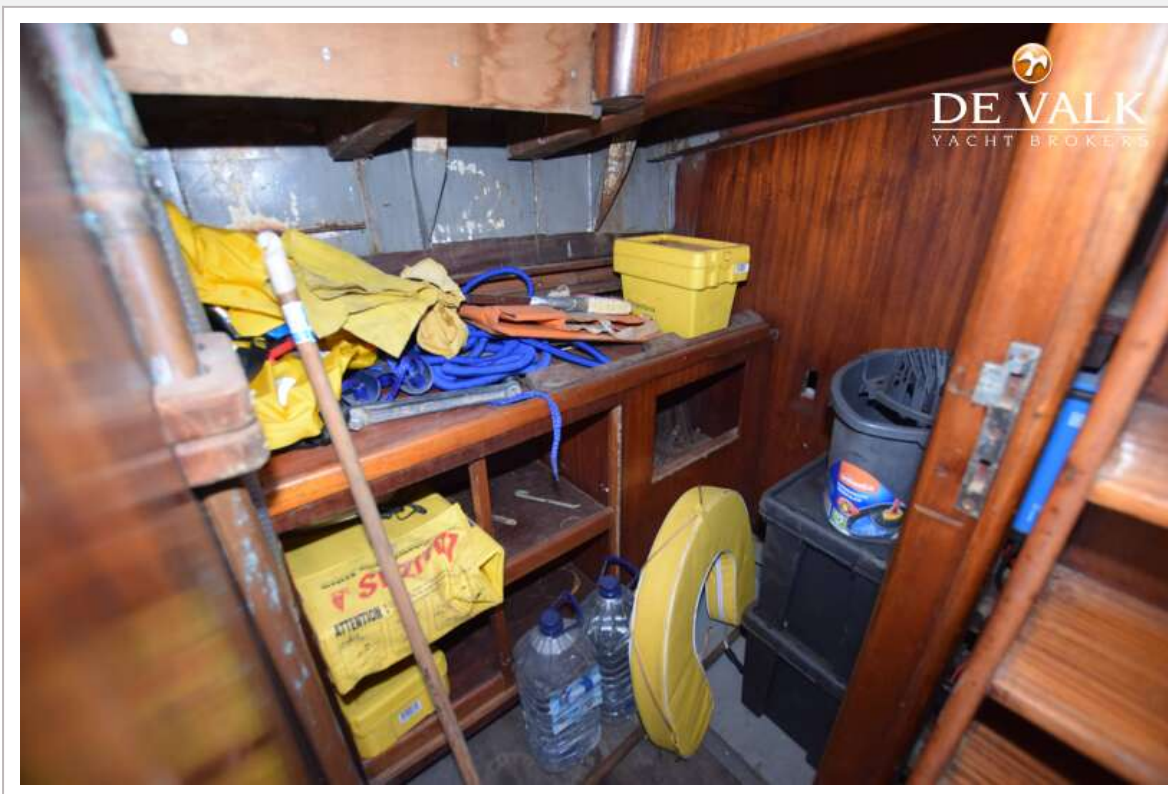
SKORPION 44



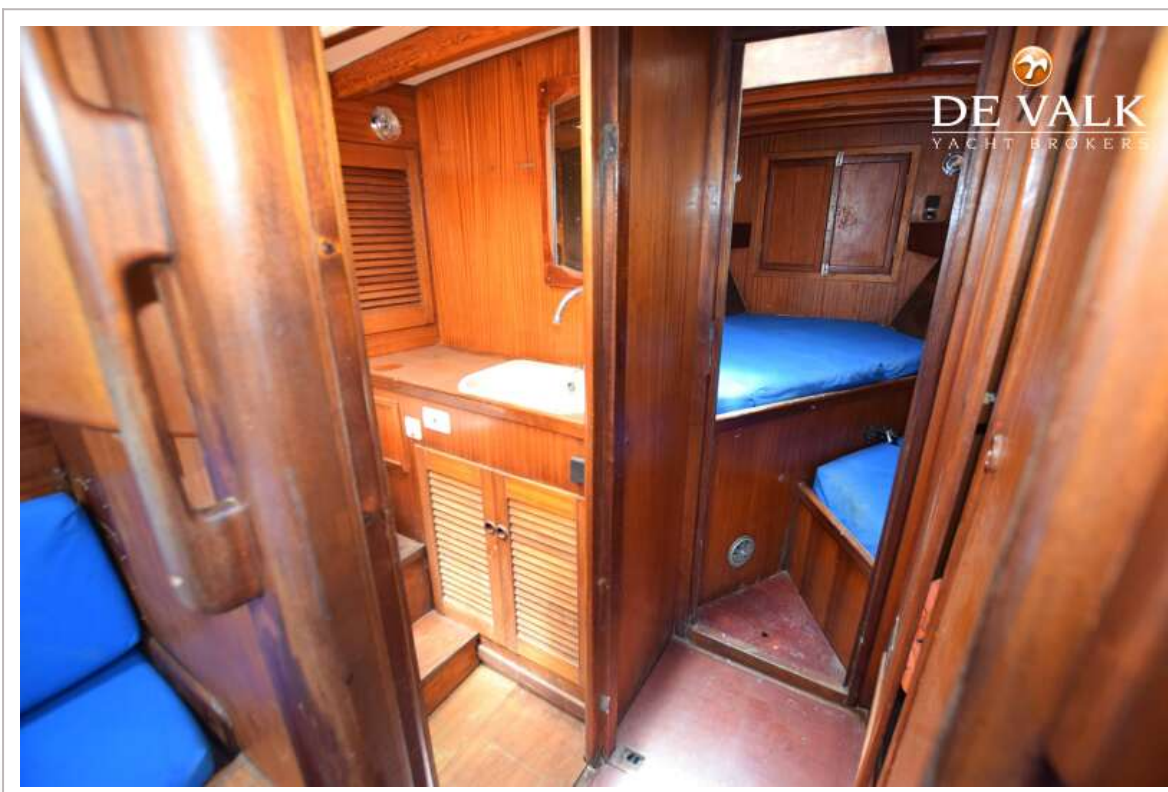
SKORPION 44



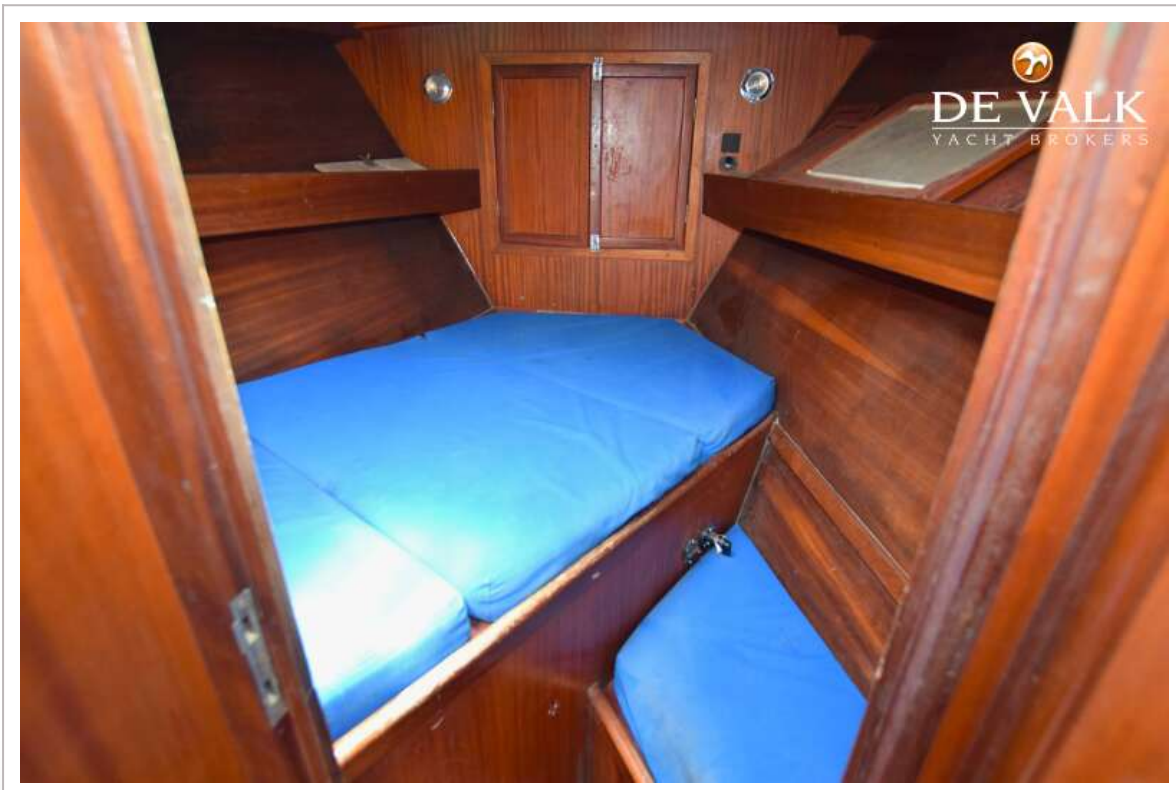
SKORPION 44



SKORPION 44



SKORPION 44



SKORPION 44

