



DE VALK  
YACHT BROKERS



AQUANAUT EUROPEAN VOYAGER 1300



DE VALK  
YACHT BROKERS

# AQUANAUT EUROPEAN VOYAGER 1300

## BROKER'S COMMENTS

This Aquanaut European Voyager 1300 Special Edition is a complete and well-maintained vessel from 1st owner. This yacht was configured with numerous custom options and thoughtful modifications, making it comfortable and practical. The integrated interior stairs to the flybridge allows quick and easy access from the interior to the exterior helm, while minimizing loss of space. The vessel's limited air draft makes it suited for cruising the French canals. Equipped with a remote control, this yacht combines luxury, practicality, and excellent cruising capabilities.

*Jeanne Stukstette*

## SPECIFICATIONS

<b>Dimensions</b>	13.15 x 4.35 x 1.15 (m)	<b>Builder</b>	AQUANAUT YACHTING HOLLAND B.V. SNEEK
<b>Built</b>	2010	<b>Cabins</b>	2
<b>Material</b>	Steel	<b>Berths</b>	6
<b>Engine(s)</b>	1 x Perkins M225 T1 diesel	<b>Hp/Kw</b>	148.00 (hp), 108.93 (kw)
<b>Asking price</b>	€ 385.000 (VAT Paid)	<b>Lying</b>	at sales office

## CONTACT

<b>Sales office</b>	De Valk Limburg	<b>Telephone</b>	+31 630372559
<b>Address</b>	Schippersveld 3 6019 DE Wessem NL	<b>E-mail</b>	limburg@devalk.nl

## DISCLAIMER

These particulars are given in good faith as supplied but cannot be guaranteed.



# AQUANAUT EUROPEAN VOYAGER 1300

## GENERAL

<b>Model</b>	AQUANAUT EUROPEAN VOYAGER 1300
<b>Type</b>	motor yacht
<b>LOA (m)</b>	13,15
<b>Beam (m)</b>	4,35
<b>Draft (m)</b>	1,15
<b>Air draft min (m)</b>	3,25
<b>Headroom (m)</b>	2,00
<b>Year built</b>	2010
<b>Builder</b>	AQUANAUT YACHTING HOLLAND B.V. SNEEK
<b>Country</b>	The Netherlands
<b>Designer</b>	AQUANAUT YACHTING
<b>Displacement (t)</b>	20
<b>CE norm</b>	B
<b>Hull material</b>	steel
<b>Hull colour</b>	beige
<b>Hull shape</b>	multi hard chine
<b>Superstructure material</b>	steel
<b>Rubbing strake</b>	stainless steel
<b>Deck finish</b>	non-skid paint
<b>Superstructure deck finish</b>	paint
<b>Cockpit deck finish</b>	non-skid paint
<b>Antifouling (year)</b>	2026
<b>Window frame</b>	aluminium
<b>Window material</b>	double glazing
<b>Deckhatch</b>	1x
<b>Portholes</b>	6
<b>Insulation</b>	rockwool
<b>Flybridge</b>	yes
<b>Flybridge cover</b>	Kap + bimini
<b>Mast can be lowered</b>	manual Easy lift gasveer



# AQUANAUT EUROPEAN VOYAGER 1300

Fuel tank (litre)	steel 1200
Level indicator (fuel tank)	yes
Freshwater tank (litre)	stainless steel 800
Level indicator (freshwater)	yes
Blackwater tank (litre)	stainless steel 300
Level indicator (blackwater)	yes
Blackwater tank extraction	yes
Wheel steering	hydraulic
Inside helm position	yes
Outside helm position	hydraulic
Extra info	TINTED DOUBLE GLAZING
Extra info	SPECIAL EDITION

## ACCOMMODATION

Cabins	2
Berths	6
Interior	cherry
Pilot house	yes
Saloon	yes
Headroom saloon (m)	2,00
Heating	diesel ducted hot air WEBASTO 5KW
Heating 2	diesel ducted hot air WEBASTO 5KW
Navigation center	yes
Chart table	yes
Opening door to cockpit	yes
Opening door to aft deck	yes
Countertop	plastic
Sink	stainless steel
Cooker	calor gas 4x GIMEG
Microwave/oven combi	SIEMENS INNOWAVE
Fridge	COOLMATIC MDC WAECO



# AQUANAUT EUROPEAN VOYAGER 1300

Freezer	IN FRIDGE
Hot water system	220V + engine ISOTHERM 60
Water pressure system	electrical
Owners cabin	double bed
Bed length (m)	1,65X2,00
Toilet	en suite ELECTRIC TOILET 24V AVAIAABLE TO BE BUILT IN JABSCO QUIET FLUSH
Toilet system	manual
Wash basin	in the bathroom
Shower	separate
Guest cabin 1	French bed
Bed length (m)	1,65X2,00
Extra info	STORAGE ROOM
Washing machine/dryer combi	yes
Flybridge	yes
Extra info	yes

## MACHINERY

No of engines	1
Make	Perkins
Type	M225 T1
HP	148
kW	108.93
Fuel	diesel
Year installed	2010
Maximum speed (kn)	9
Cruising speed (kn)	6
Consumption (l/hr)	5
Engine hours	2017
Engine cooling system	freshwater heat exchanger
Drive	shaft



# AQUANAUT EUROPEAN VOYAGER 1300

Shaft seal	yes
Engine controls	electrical
Bowthruster	electric VETUS 145 KGF
Sternthruster	electric VETUS 145 KGF
Propeller type	fixed
Propeller blades	3
Electric bilge pump	3X
Generator	MASTERVOLT WHISPER 6KW
Running hours generator	146
Batteries	4X 2024 (6 IN TOTAL)
Start battery	VARTA
Service battery	2XVARTA 135 2024
Bowthruster battery	VARTA
Sternthruster battery	VARTA
Windlass battery	VARTA
Battery monitor	PHILIPPI
Battery charger/inverter	VICTRON ENERGY MULTIPLUS COMPACT 24V/1200VA/25AMP
Diode battery combiners	yes
Shorepower	yes
Extra info	REMOTE CONTROL MOTOR + THRUSTERS HYDRAUNAUTICA
Extra info	PERKINS 6 CILINDER
Extra info	MASTERVOLT INVERTER /CHARGER SPARE ON BOARD MASTERVOLT INVERTER /CHARGER SPARE ON BOARD

## NAVIGATION

Compass	yes
Depth sounder	yes
VHF	SHIPMATE
Autopilot	RAYMARINE C80
Rudder angle indicator	RAYMARINE



# AQUANAUT EUROPEAN VOYAGER 1300

GPS	yes
Plotter	RAYMARINE C80 + HDS 7M
Navigation lights	yes

## EQUIPMENT

Fixed windscreen	yes
Sprayhood	yes
Bimini	yes
Window cover	yes
Bathing platform	yes
Boarding ladder	yes
Transom door	yes
Deck shower	HOT AND COLD
Anchor	Ploegschaar anker
Anchor chain	yes
Windlass	electrical VETUS
Deck wash	yes
Sea railing	yes
Pulpit	yes
Wiper	yes
Horn	yes
Fenders	yes
Mooring lines	yes
Spare parts	yes
TV	SAMSUNG
TV receiver	DIGITENNE
Radio	yes
Cockpit speakers	yes
Speakers in salon	yes
Extra info	LED interior lighting



# AQUANAUT EUROPEAN VOYAGER 1300



# AQUANAUT EUROPEAN VOYAGER 1300



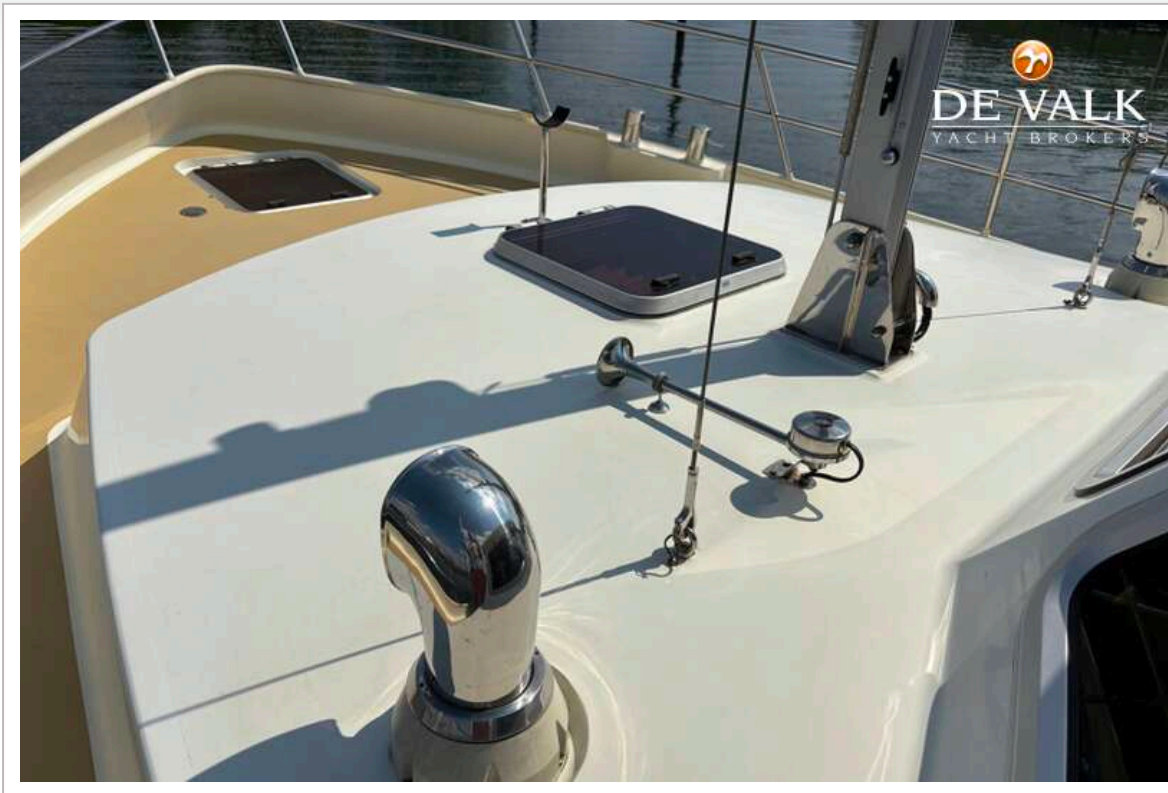
# AQUANAUT EUROPEAN VOYAGER 1300



# AQUANAUT EUROPEAN VOYAGER 1300



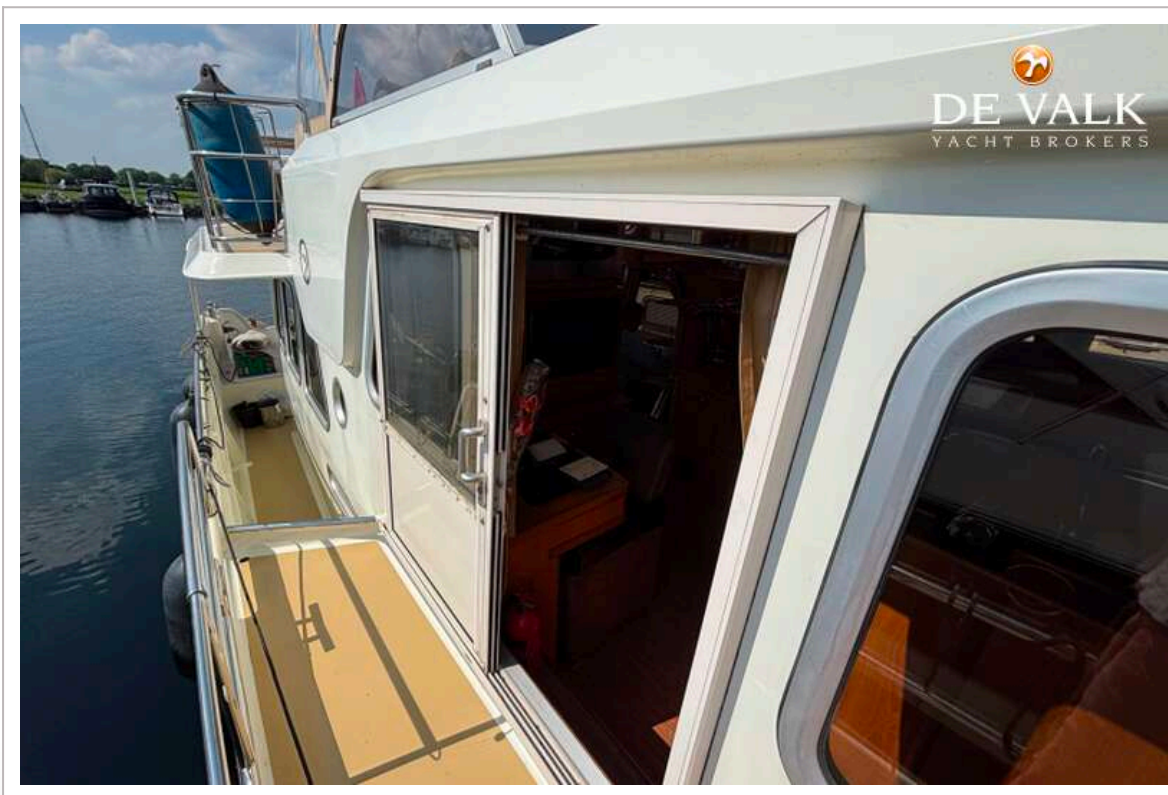
# AQUANAUT EUROPEAN VOYAGER 1300



# AQUANAUT EUROPEAN VOYAGER 1300



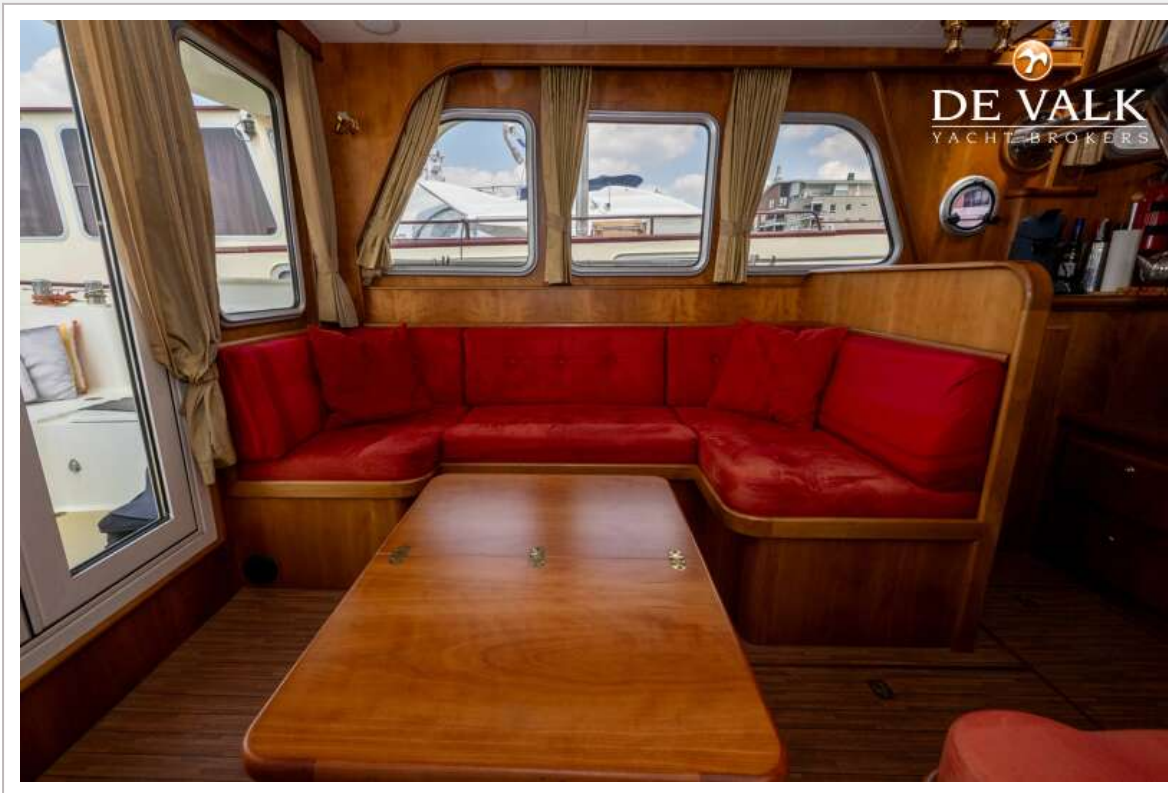
# AQUANAUT EUROPEAN VOYAGER 1300



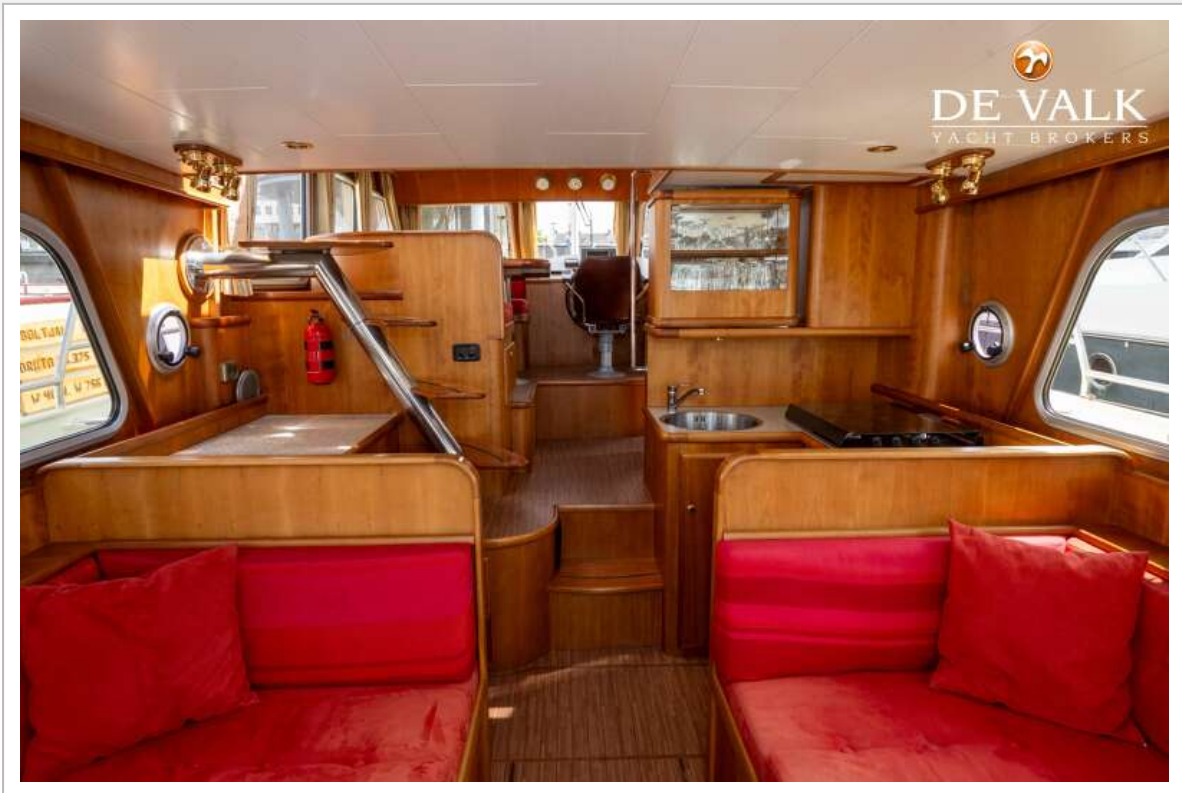
# AQUANAUT EUROPEAN VOYAGER 1300



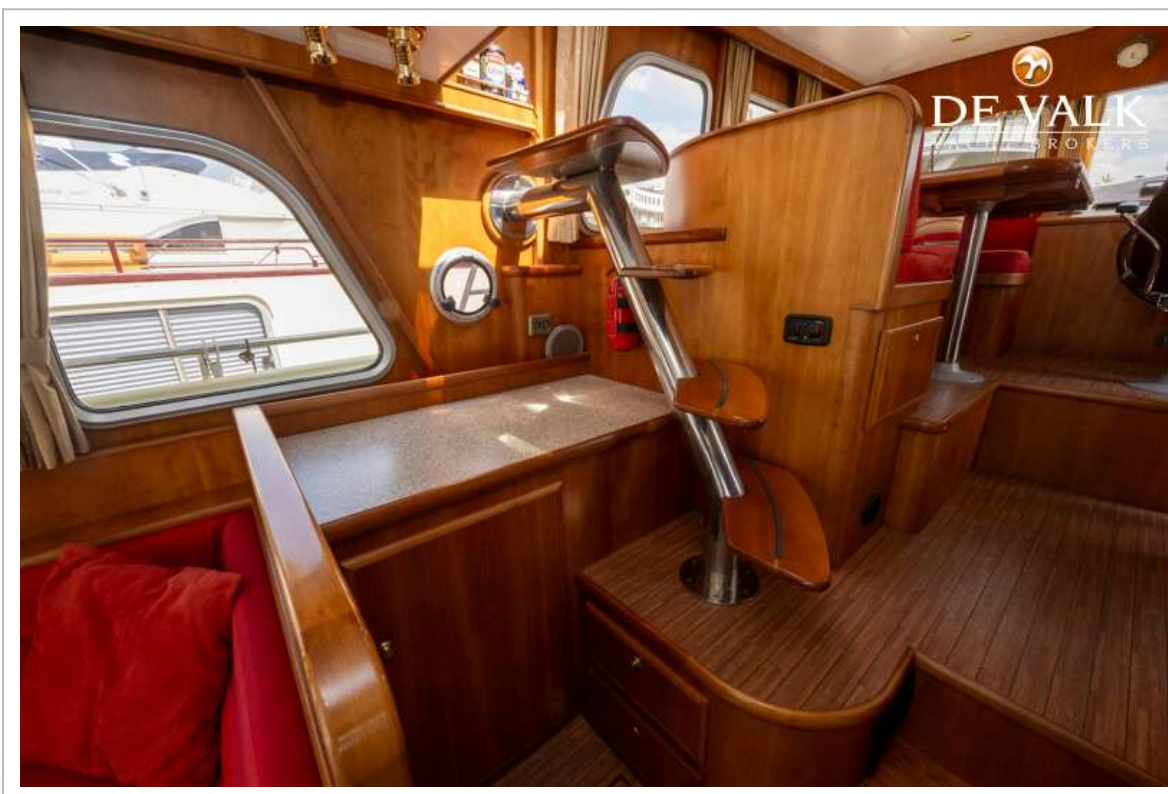
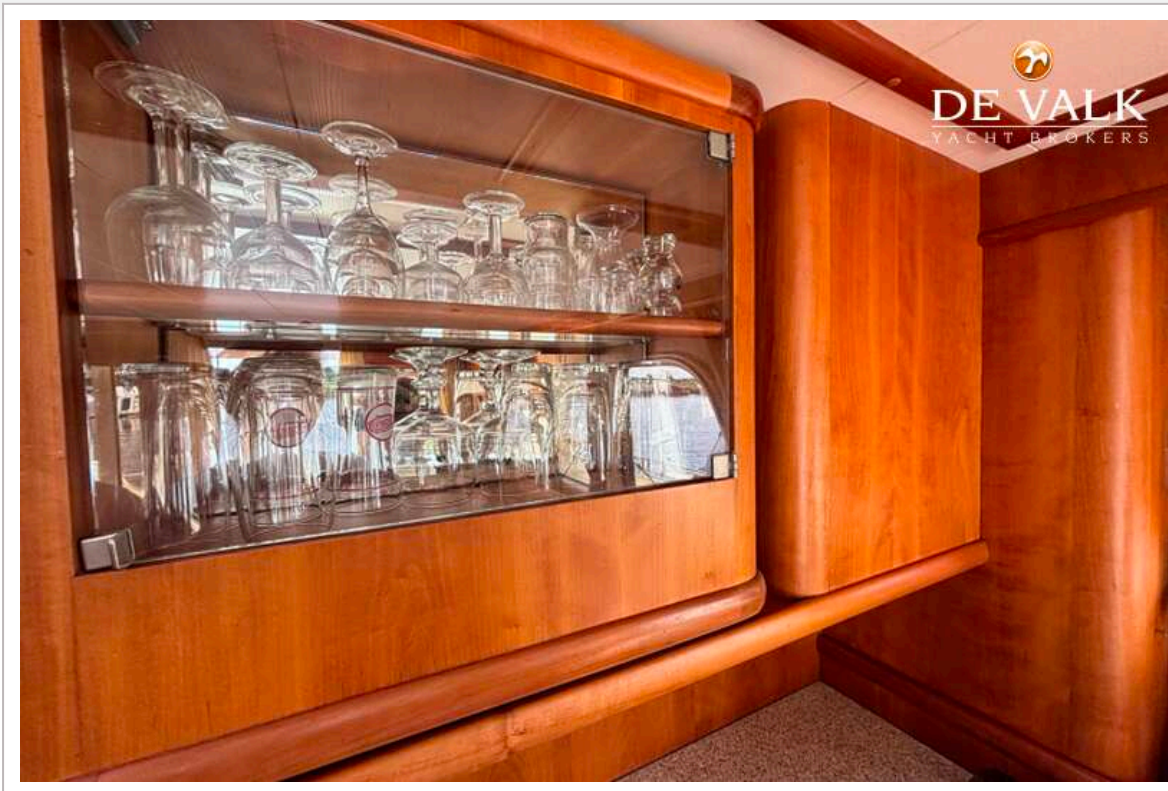
# AQUANAUT EUROPEAN VOYAGER 1300



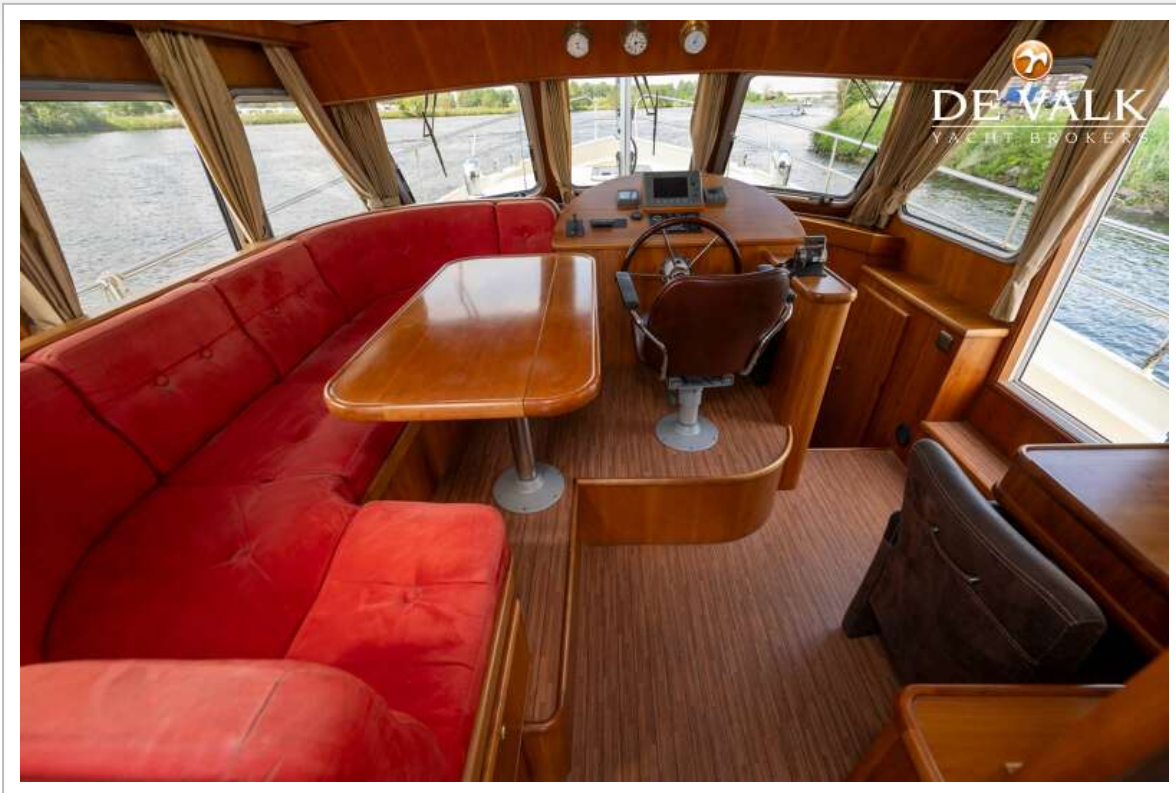
# AQUANAUT EUROPEAN VOYAGER 1300



# AQUANAUT EUROPEAN VOYAGER 1300



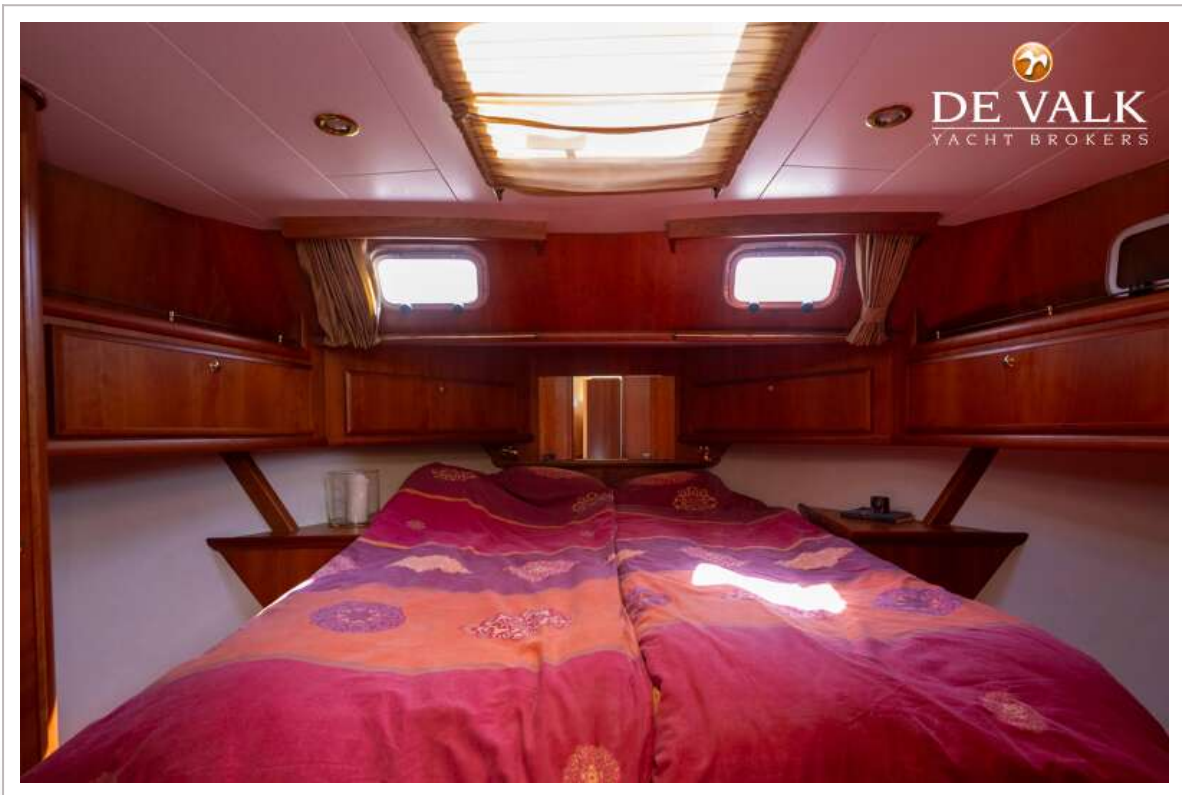
# AQUANAUT EUROPEAN VOYAGER 1300



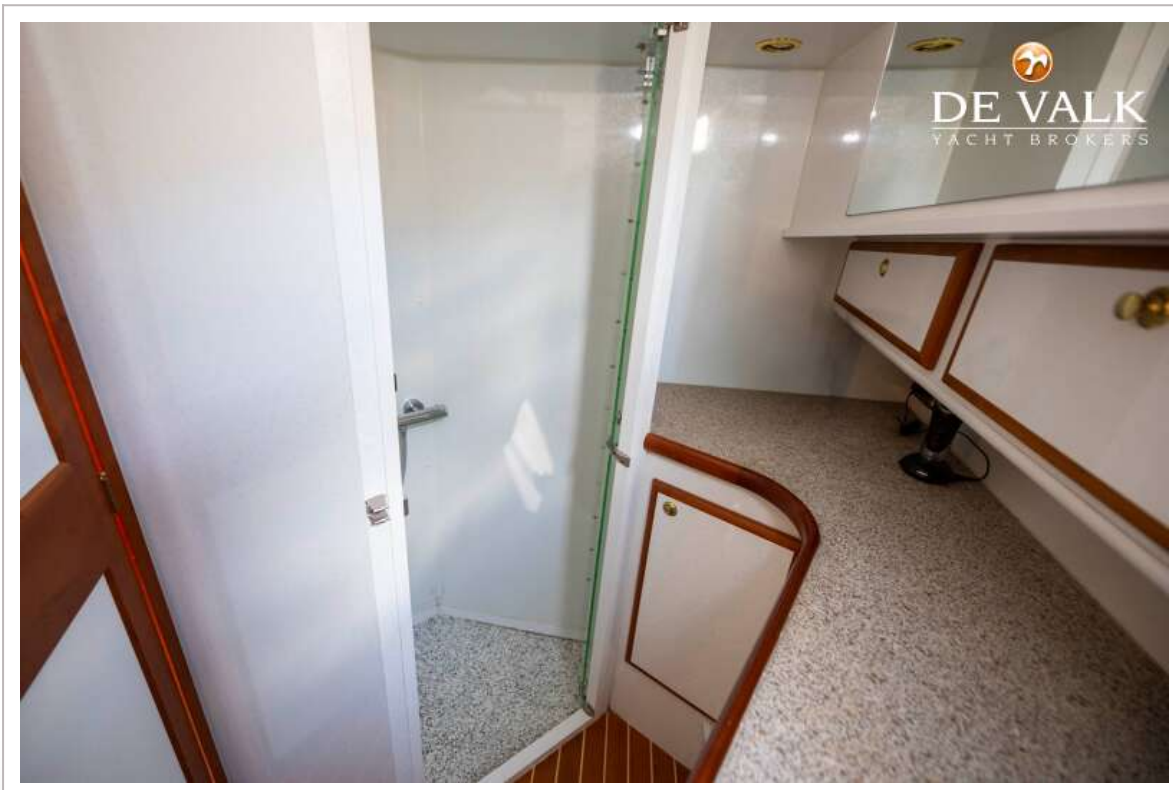
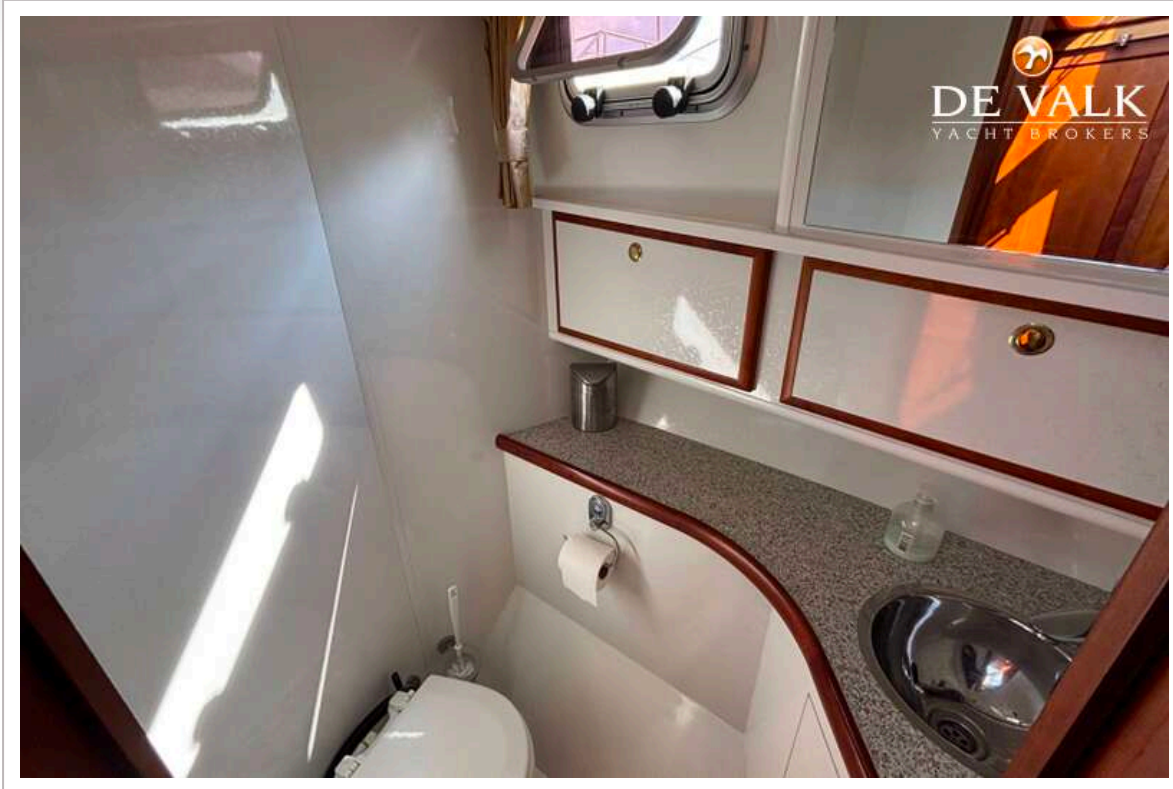
# AQUANAUT EUROPEAN VOYAGER 1300



# AQUANAUT EUROPEAN VOYAGER 1300



# AQUANAUT EUROPEAN VOYAGER 1300



# AQUANAUT EUROPEAN VOYAGER 1300



# AQUANAUT EUROPEAN VOYAGER 1300

