



DE VALK  
YACHT BROKERS



PRESTIGE X60



DE VALK  
YACHT BROKERS

# PRESTIGE X60

## BROKER'S COMMENTS

The Prestige X60 Flybridge combines generous space with refined luxury and a modern interior. Large windows create an exclusive atmosphere on board. The salon and open infinity cockpit provide a seamless indoor-outdoor experience through a large electric sliding door. The flybridge offers additional living space with beautiful views and comfortable lounges. She delivers stable and smooth cruising thanks to her powerful propulsion. The layout features three cabins, each with its own en-suite bathroom. Now available for viewing in Loosdrecht.

*Mark Hesselmans*

## SPECIFICATIONS

<b>Dimensions</b>	18.70 x 4.87 x 1.31 (m)	<b>Builder</b>	JEANNEAU Prestige
<b>Built</b>	2023	<b>Cabins</b>	4
<b>Material</b>	GRP	<b>Berths</b>	7
<b>Engine(s)</b>	2 x Cummins Cummins Qsc 8.3 diesel	<b>Hp/Kw</b>	2 x 600.00 (hp), 441.60 (kw)
<b>Asking price</b>	€ 1.675.000 (VAT Not paid)	<b>Lying</b>	at sales office

## CONTACT

<b>Sales office</b>	De Valk Loosdrecht B.V.	<b>Telephone</b>	+31 (0)35 582 90 30
<b>Address</b>	't Breukeleveense Meentje 6 1231LM Loosdrecht / Wijdmeren NL	<b>E-mail</b>	loosdrecht@devalk.nl

## DISCLAIMER

These particulars are given in good faith as supplied but cannot be guaranteed.



# PRESTIGE X60

## GENERAL

<b>Model</b>	PRESTIGE X60
<b>Type</b>	motor yacht
<b>LOA (m)</b>	18,70
<b>Beam (m)</b>	4,87
<b>Draft (m)</b>	1,31
<b>Year built</b>	2023
<b>Builder</b>	JEANNEAU Prestige
<b>Designer</b>	Garroni Design / J&J Concepts / Prestige
<b>Displacement (t)</b>	25,01
<b>CE norm</b>	B
<b>Hull material</b>	GRP
<b>Hull colour</b>	white
<b>Hull shape</b>	Deep V
<b>Rubbing strake</b>	stainless steel
<b>Deck material</b>	GRP
<b>Deck finish</b>	teak
<b>Superstructure deck finish</b>	teak Flybridge
<b>Cockpit deck finish</b>	teak
<b>Antifouling (year)</b>	2023
<b>Window frame</b>	stainless steel
<b>Window material</b>	tempered glass
<b>Deckhatch</b>	1x
<b>Portholes</b>	stainless steel 8x all can be opened
<b>Flybridge</b>	Wetbar: sink, Kenyon Grille, 2x Vitrifrigo
<b>Flybridge cockpit cover</b>	yes
<b>Fuel tank (litre)</b>	aluminium 1045
<b>Fuel tank 2 (litre)</b>	aluminium 1045
<b>Level indicator (fuel tank)</b>	yes
<b>Freshwater tank (litre)</b>	polyethylene 2x 380
<b>Level indicator (freshwater)</b>	yes



# PRESTIGE X60

<b>Blackwater tank (litre)</b>	polyethylene 258 + 50 crew
<b>Level indicator (blackwater)</b>	yes
<b>Blackwater tank extraction</b>	deck extraction + pump
<b>Greywater tank (litre)</b>	polyethylene 45
<b>Wheel steering</b>	hydraulic 2 Control stations bowthruster
<b>Inside helm position</b>	yes
<b>Outside helm position</b>	Rear deck 2x joystick
<b>Flybridge helm position</b>	electric
<b>Extra info</b>	Aftdeck dockingstation with joystick

## ACCOMMODATION

<b>Cabins</b>	4
<b>Berths</b>	7
<b>Crew cabin</b>	yes
<b>Interior</b>	walnut Woodwork 3 staterooms/3 bathrooms – walnut
<b>Floor</b>	vinyl
<b>Aft deck</b>	yes
<b>Deck saloon</b>	Foredeck lounge package
<b>Air-conditioning</b>	reverse cycle airco Mediteranean 72.000 BTU Air conditioning unit for skipper cabi
<b>Sliding door to aft deck</b>	Electric
<b>Galley</b>	yes
<b>Countertop</b>	corian
<b>Sink</b>	stainless steel
<b>Cooker</b>	induction Siemens 3-burner
<b>Microwave/oven combi</b>	Whirlpool
<b>Fridge</b>	104L in galley 2x drawer fridge flybridge 1x on aft deck
<b>Freezer</b>	In saloon
<b>Hot water system</b>	220V + engine
<b>Water pressure system</b>	electrical
<b>Dishwasher</b>	Miele



# PRESTIGE X60

Ice maker	yes
Owners cabin	French bed 1,80 x 2,00 m
Wardrobe	hanging/drawers/shelves Walk in closet
Bathroom	en suite
Toilet	en suite
Toilet system	electric Tecma
Wash basin	in the bathroom
Shower	en suite
Guest cabin 1	French bed 1,80 x 2,00
Wardrobe	hanging and shelves
Bathroom	en suite
Toilet	en suite
Toilet system	electric Tecma
Wash basin	in the bathroom
Shower	en suite
Guest cabin 2	twin single
Wardrobe	hanging and shelves
Bathroom	en suite
Toilet	en suite
Toilet system	electric Tecma
Wash basin	in the bathroom
Shower	shared
Crew cabin(s)	Single bed
Toilet (crew)	yes
Toilet system	electric Tecma
Wash basin	in the bathroom
Shower (crew)	yes
Washing machine/dryer combi	230v/50hz washing machine and tumble dryer
Flybridge	yes
Wet bar	On the flybridge



# PRESTIGE X60

## MACHINERY

No of engines	2
Make	Cummins
Type	Cummins Qsc 8.3
HP	600
kW	441.60
Fuel	diesel
Maximum speed (kn)	23
Cruising speed (kn)	18
Engine hours	113
Engine cooling system	freshwater heat exchanger
Drive	Zeus Pod
Engine controls	electrical
Gearbox	hydraulic
Bowthruster	electric Sleipner 24V/250Kgf
Propeller type	fixed
Propeller shaft material	stainless steel
Shaft lubrication	water
Manual bilge pump	1x manual
Electric bilge pump	4x automatic with high water alarm
Bilge alarm	yes
Generator	silent separator Onan 19KVA 230V/50Hz
Running hours generator	227
Batteries	yes
Start battery	4x 120A 24V
Service battery	6x 140A 24V
Generator battery	1x 50A 12V
Bowthruster battery	4X 50A 24V
Battery charger	Twin 2x 40A - 24V Dolphin
Inverter	Mastervolt AC master 24/2000
Diode battery combiners	yes



# PRESTIGE X60

Shorepower	with cable
Watermaker	yes
Stabilizers	Gyroscopic stabilizer Seakeeper
Trimtabs	yes

## NAVIGATION

Compass	Plastimo
Compass on flybridge	Plastimo
Multi control display	2 Garmin multifonction 16" screens
Depth sounder	yes
VHF	Garmin GHS 11i
Autopilot	yes
Rudder angle indicator	Integrated in Garmin screen
Radar	Fantom 18X
Radar/GPS/plotter	4x Garmin 16"
Wifi antenna	yes
AIS transceiver	yes
Camera	Transom camera day/night vision GC 200
Navigation lights	yes
Searchlight	Searchlight and stern docking light
Extra info	Underwater lights – blue

## EQUIPMENT

Fixed windscreen	yes
Fixed hardtop	Over Flybridge
Bimini	Front deck and Flybrigde
Sun awning	yes
Cockpit cushions	yes
Cockpit table	yes
Cockpit chairs	yes
Bathing platform	Hydraulic swim platform



# PRESTIGE X60

<b>Boarding ladder</b>	stainless steel
<b>Gangway</b>	Integrated hydraulic gangway
<b>Deck shower</b>	Hot and cold water
<b>Anchor</b>	yes
<b>Anchor chain</b>	yes
<b>Windlass</b>	electrical
<b>Capstan</b>	1x
<b>Sea railing</b>	stainless steel
<b>Grab rail (superstructure)</b>	stainless steel
<b>Railing side opening gates</b>	Both sides
<b>Wiper</b>	2x
<b>Window heating</b>	yes
<b>Horn</b>	yes
<b>Mooring lines</b>	Mooring and anchor lines Stern docking winch to port
<b>TV</b>	yes
<b>TV receiver</b>	Amplified TV antenna
<b>Satellite</b>	Pre-wiring for satellite antenna
<b>Radio-cd player</b>	Fusion
<b>Surround Sound System</b>	Fusion MS-RA70N, Speakers in Flybridge
<b>Cockpit speakers</b>	Fusion
<b>Speakers in salon</b>	Fusion



# PRESTIGE X60



# PRESTIGE X60



# PRESTIGE X60



# PRESTIGE X60



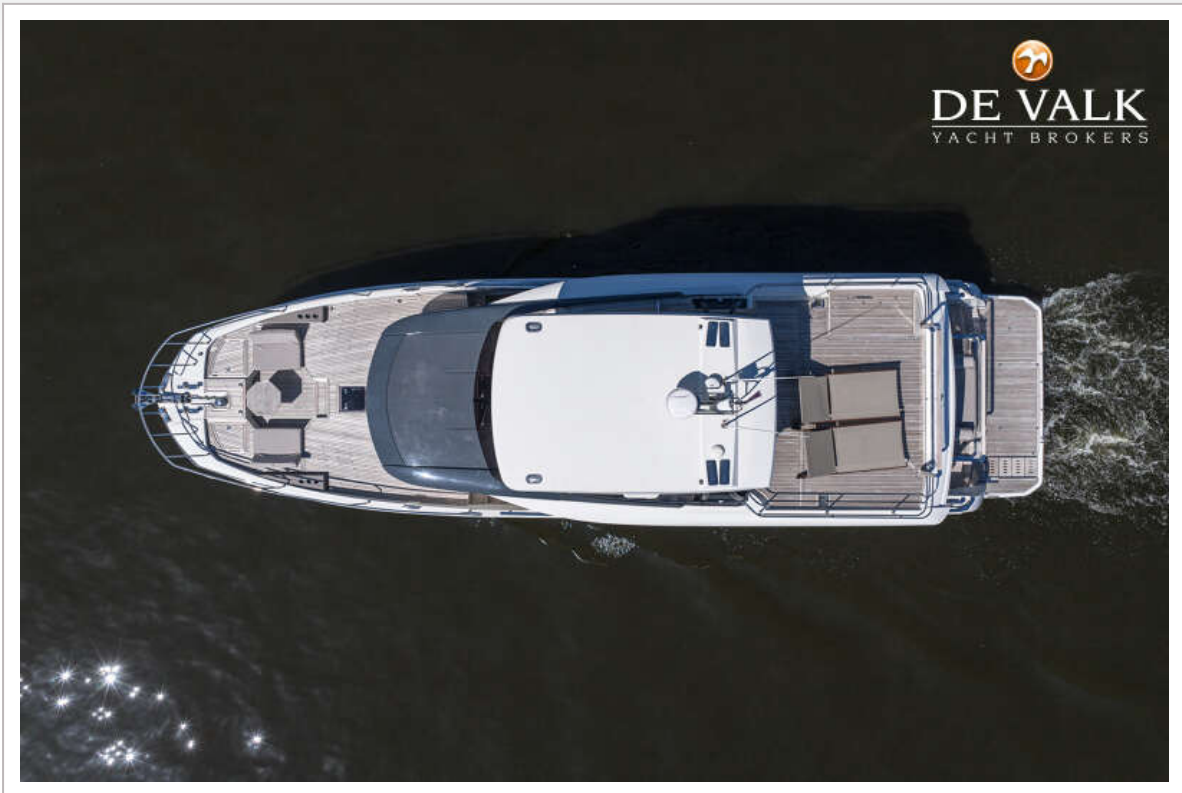
# PRESTIGE X60



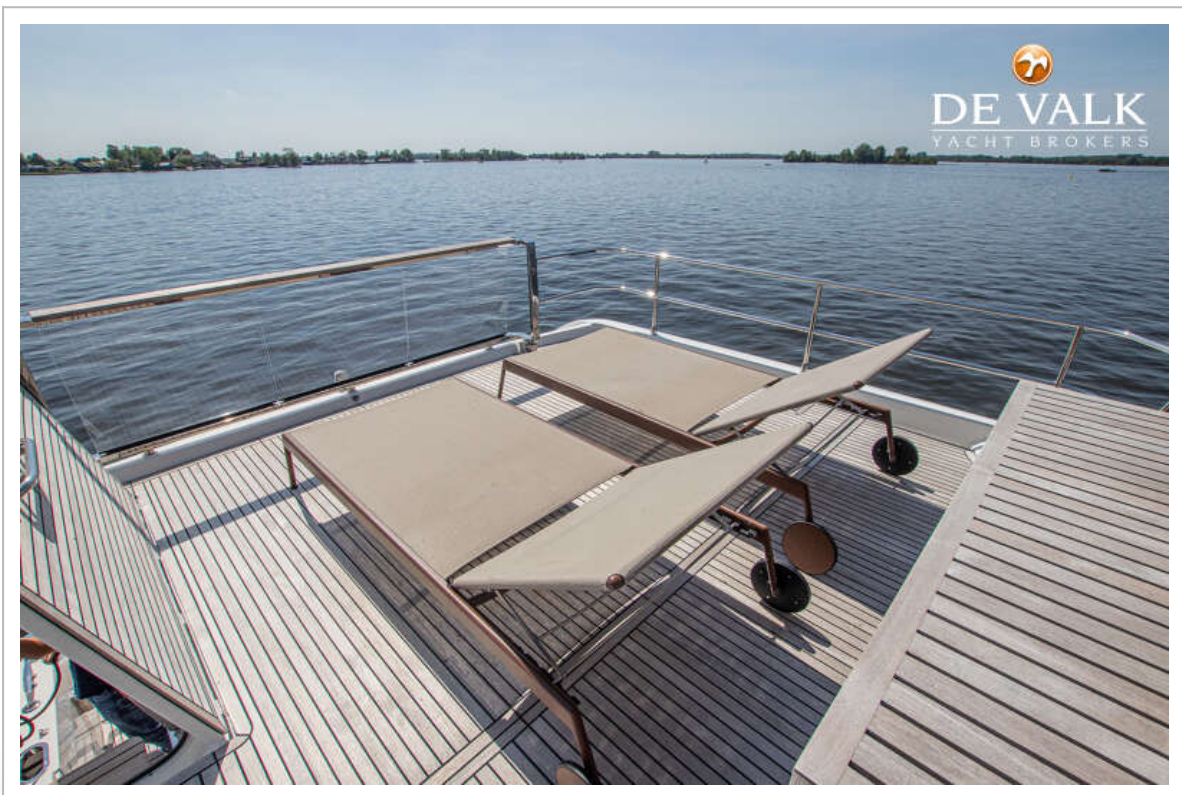
# PRESTIGE X60



# PRESTIGE X60



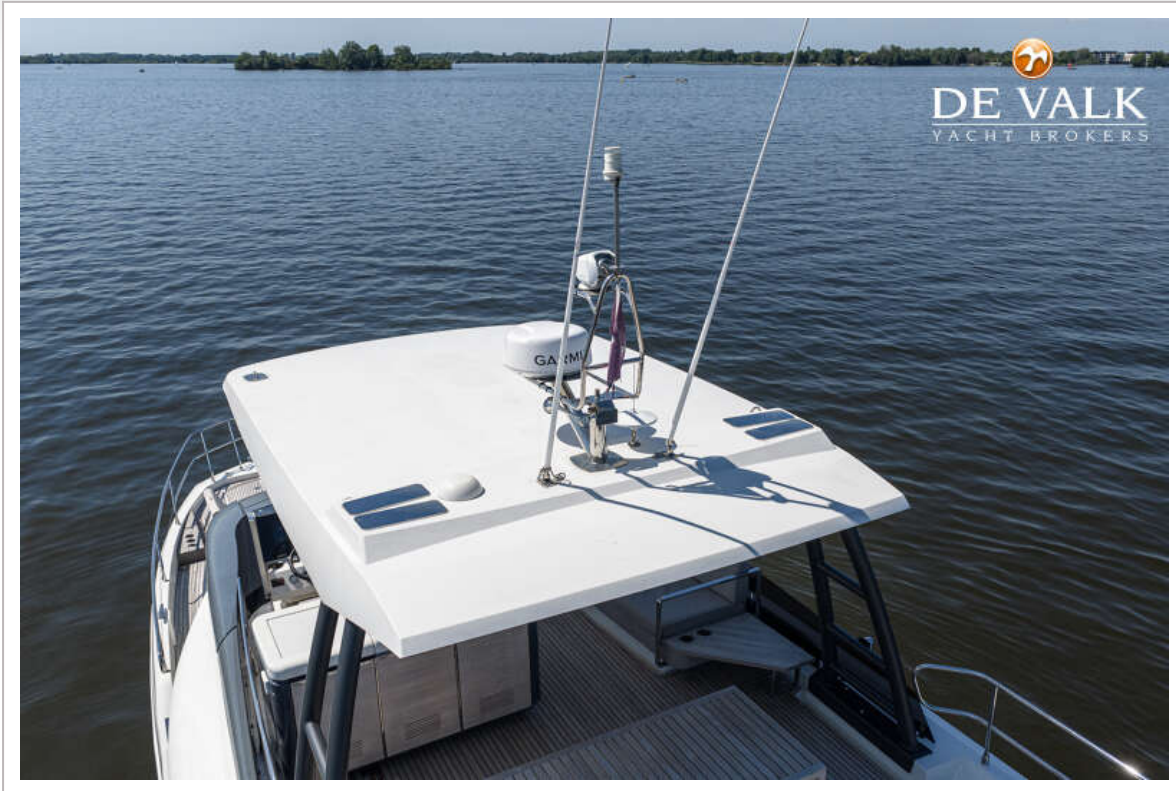
# PRESTIGE X60



# PRESTIGE X60



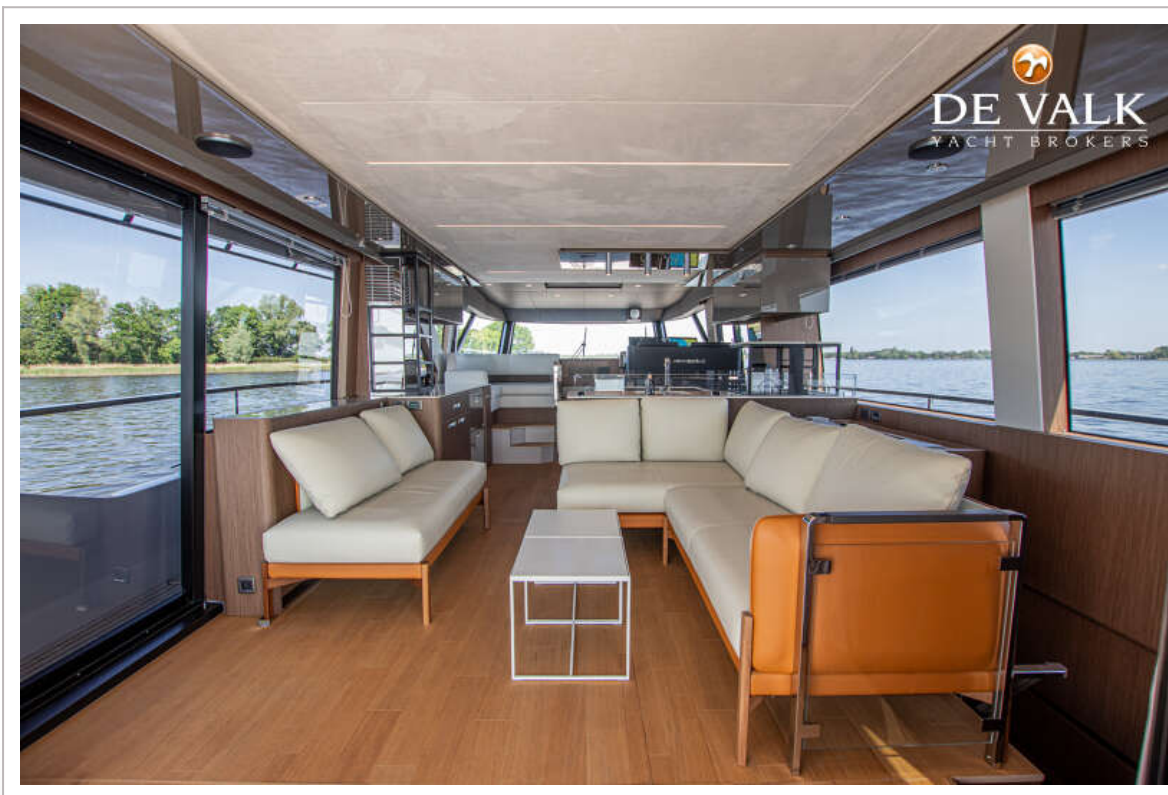
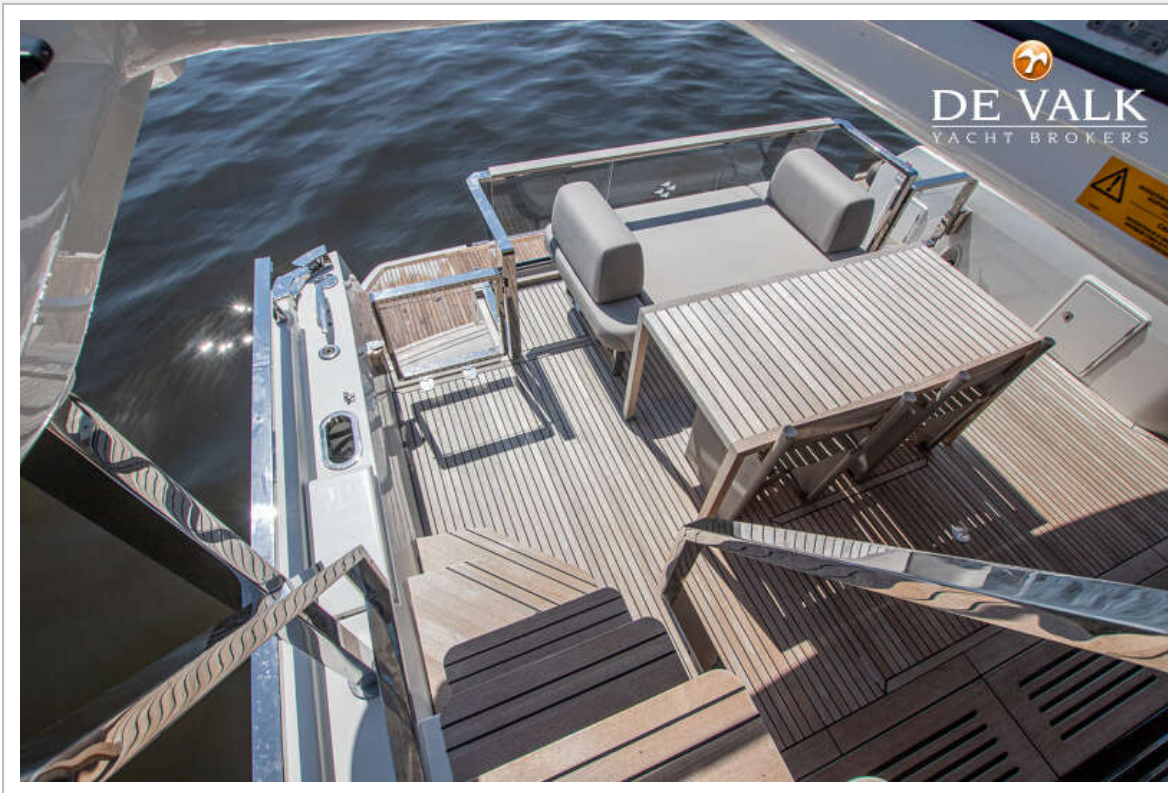
# PRESTIGE X60



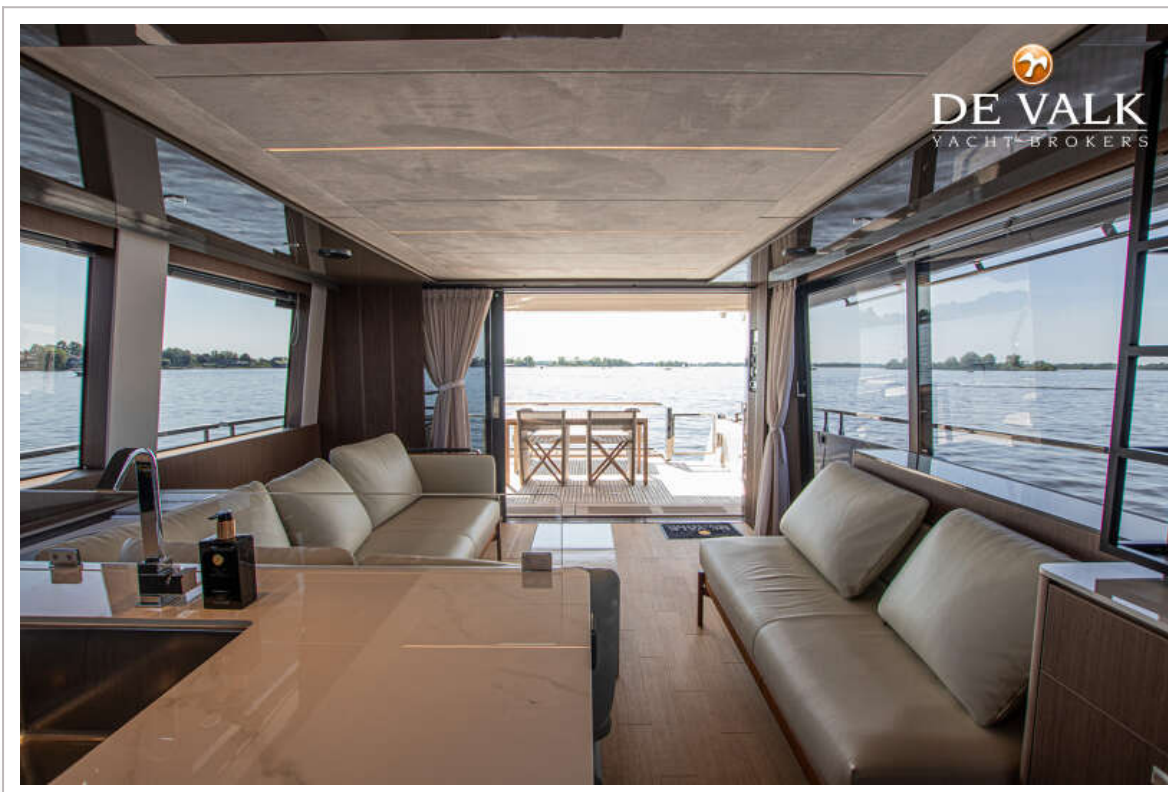
# PRESTIGE X60



# PRESTIGE X60



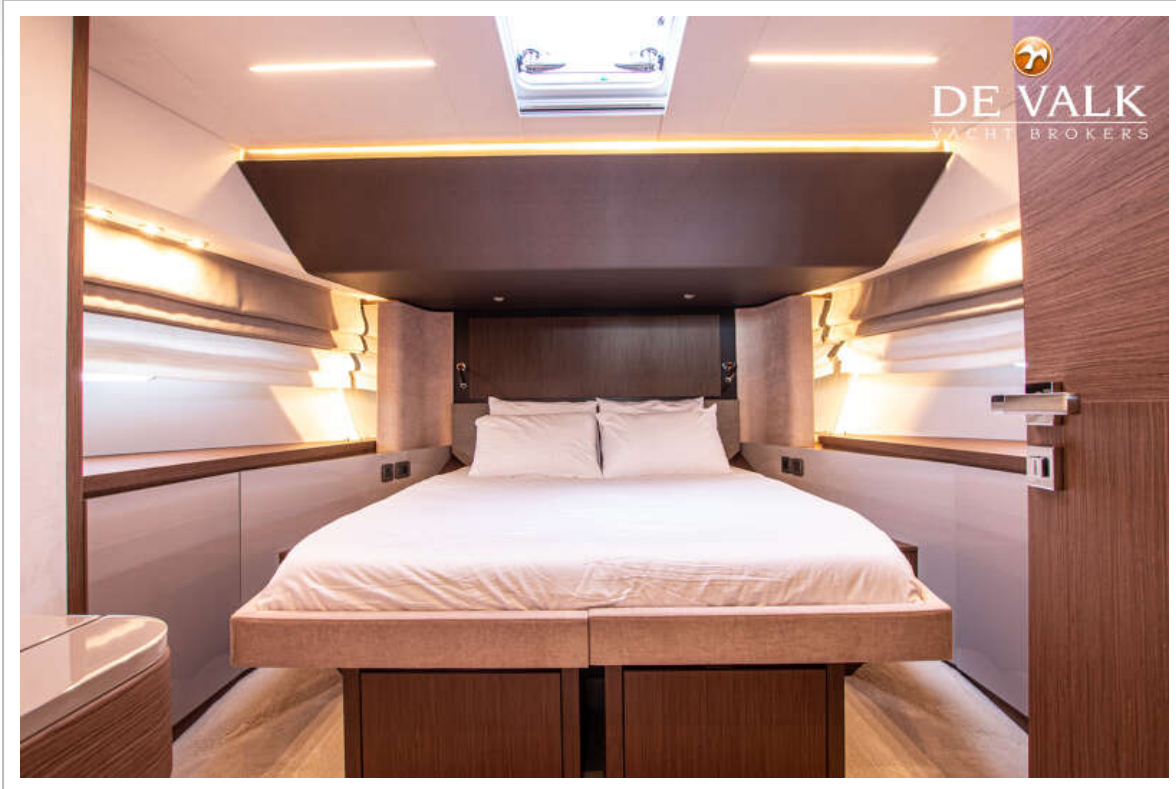
# PRESTIGE X60



# PRESTIGE X60



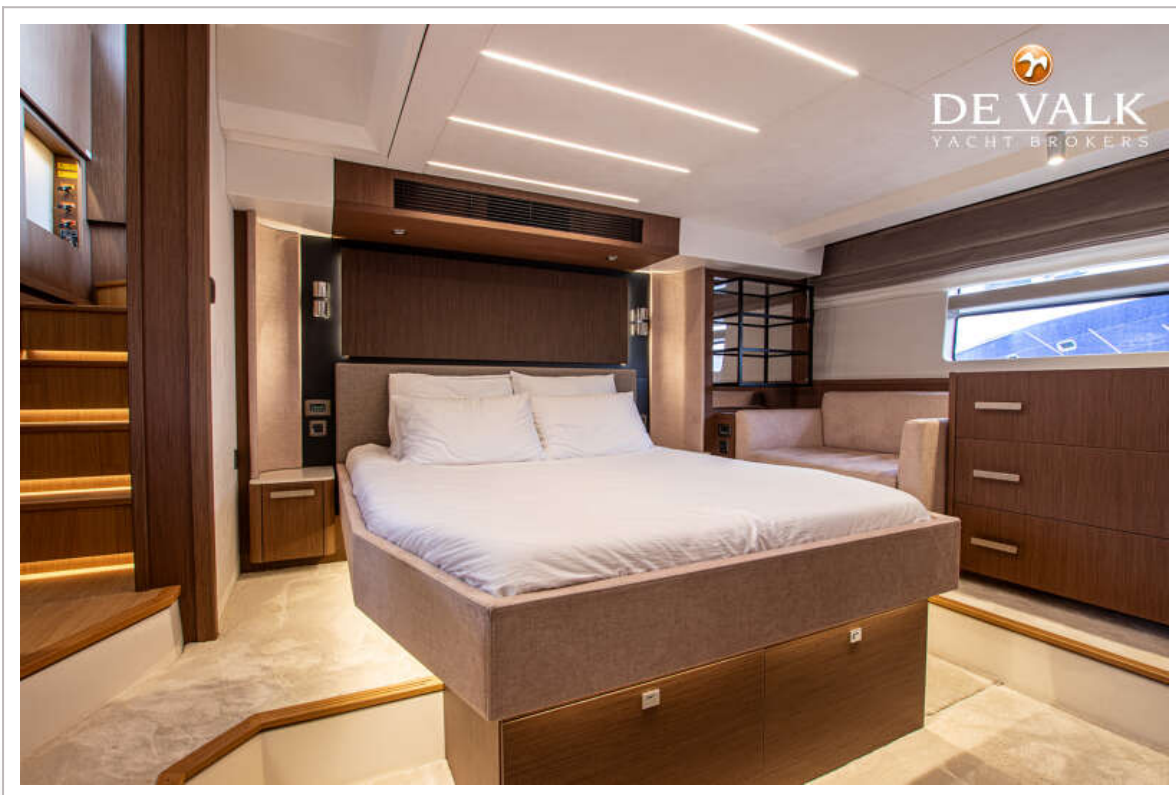
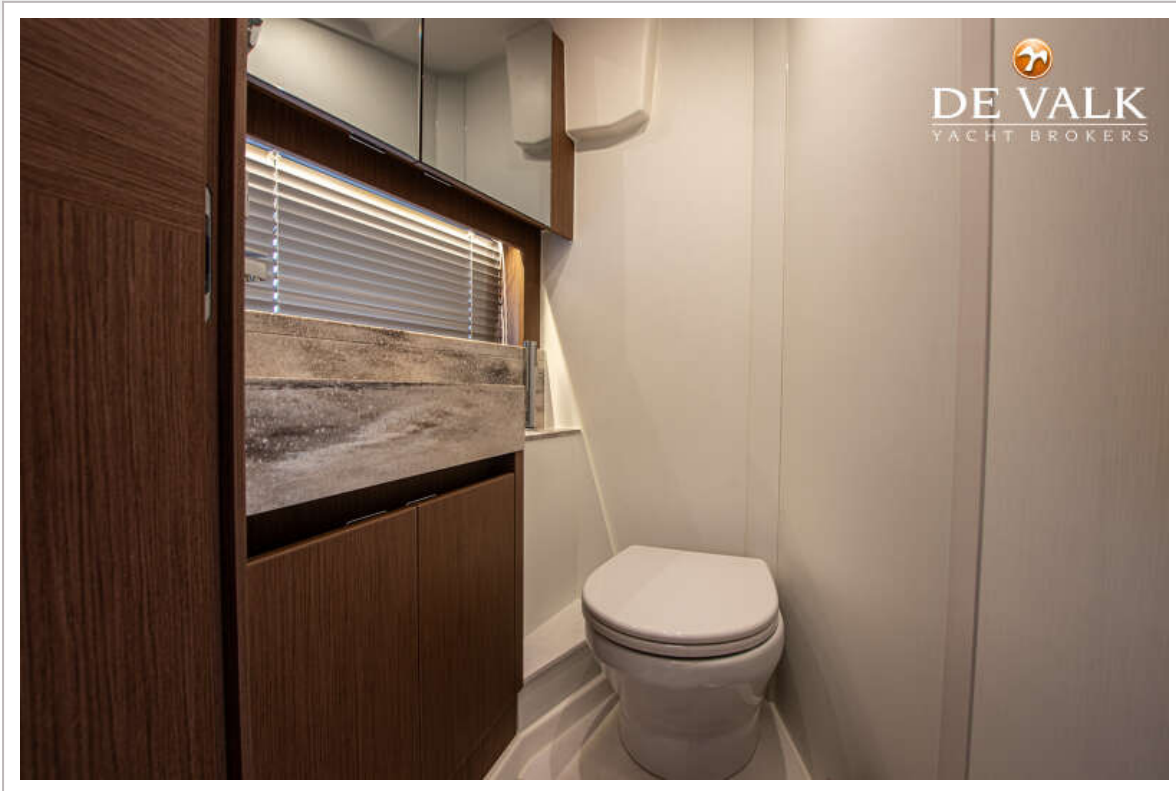
# PRESTIGE X60



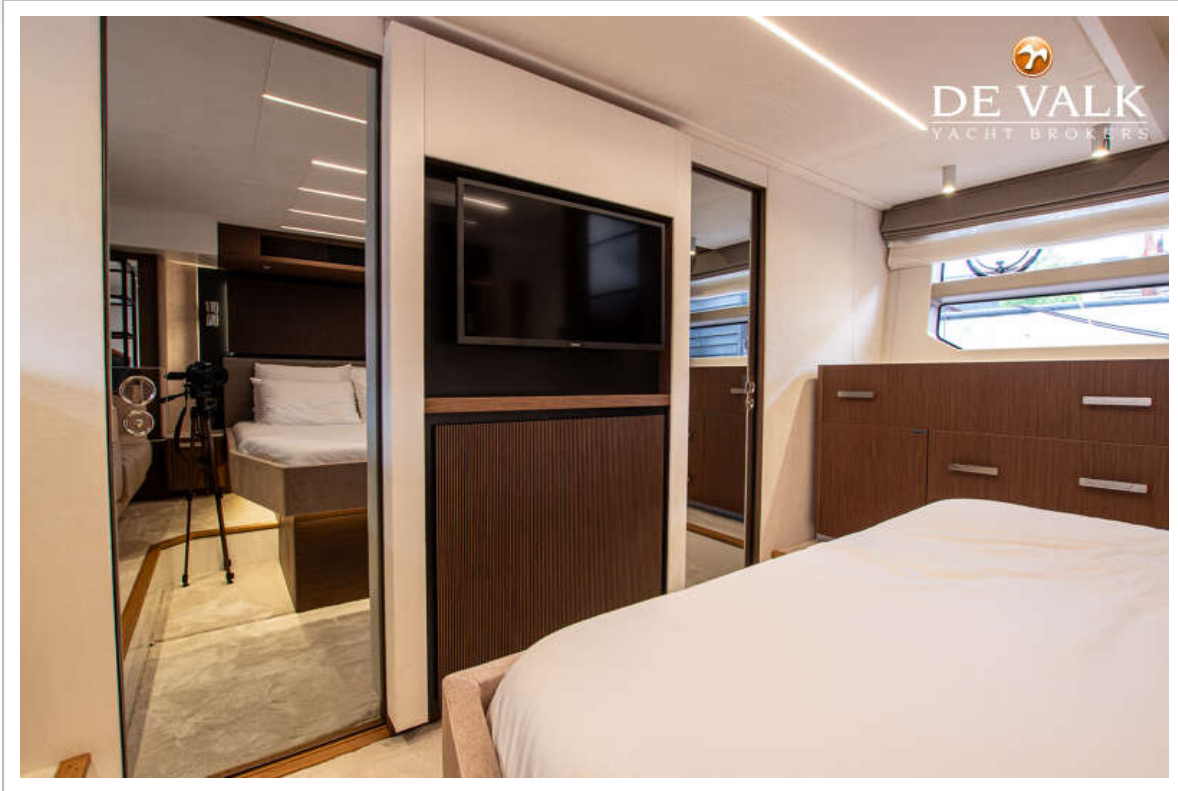
# PRESTIGE X60



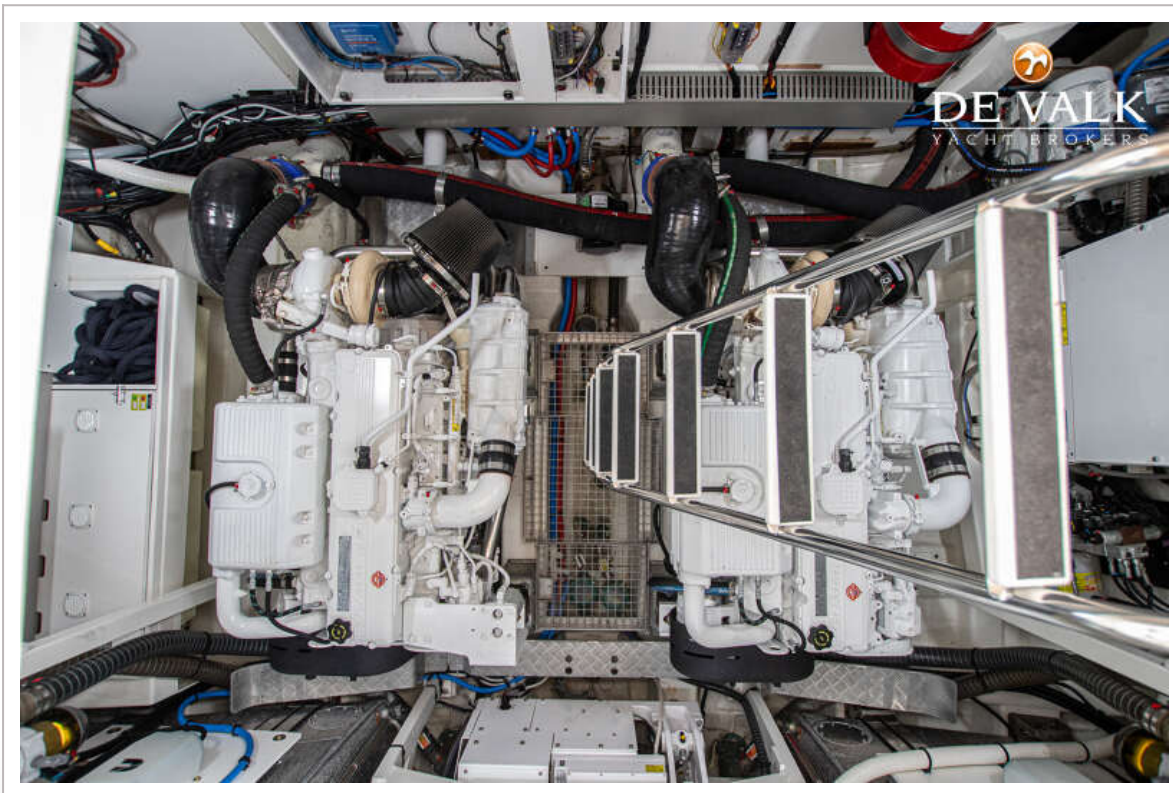
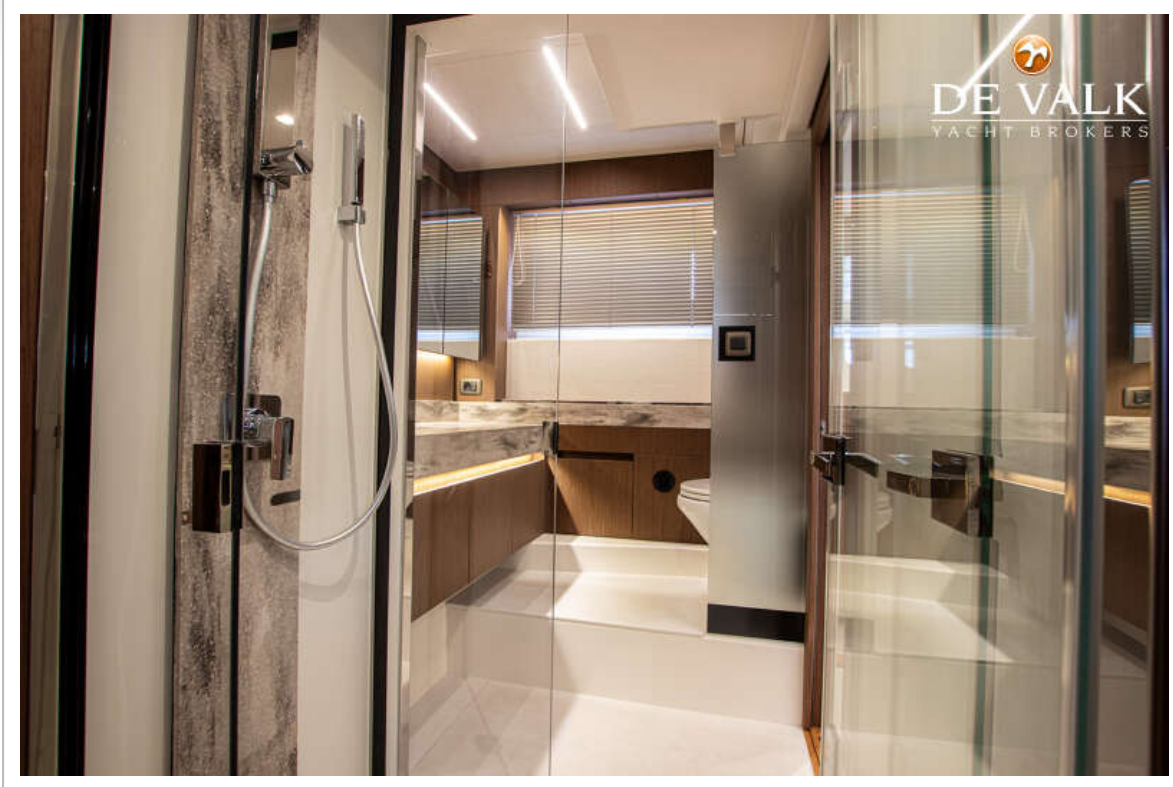
# PRESTIGE X60



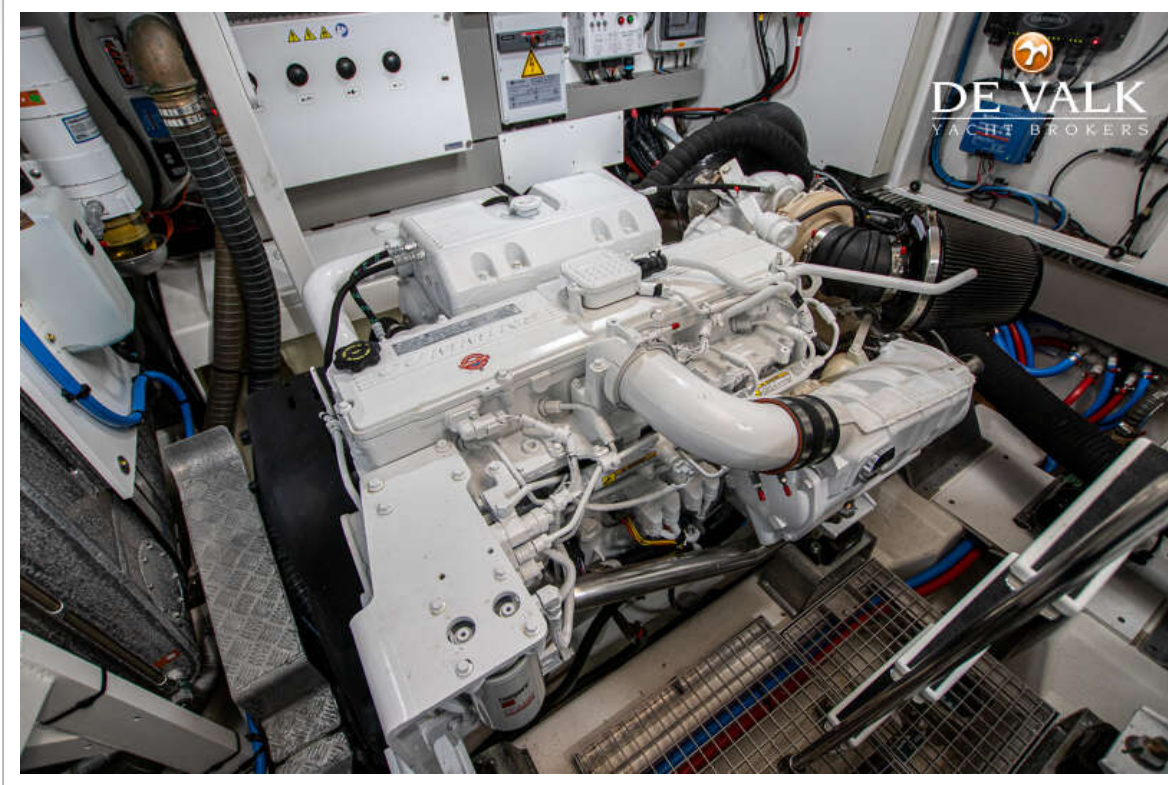
# PRESTIGE X60



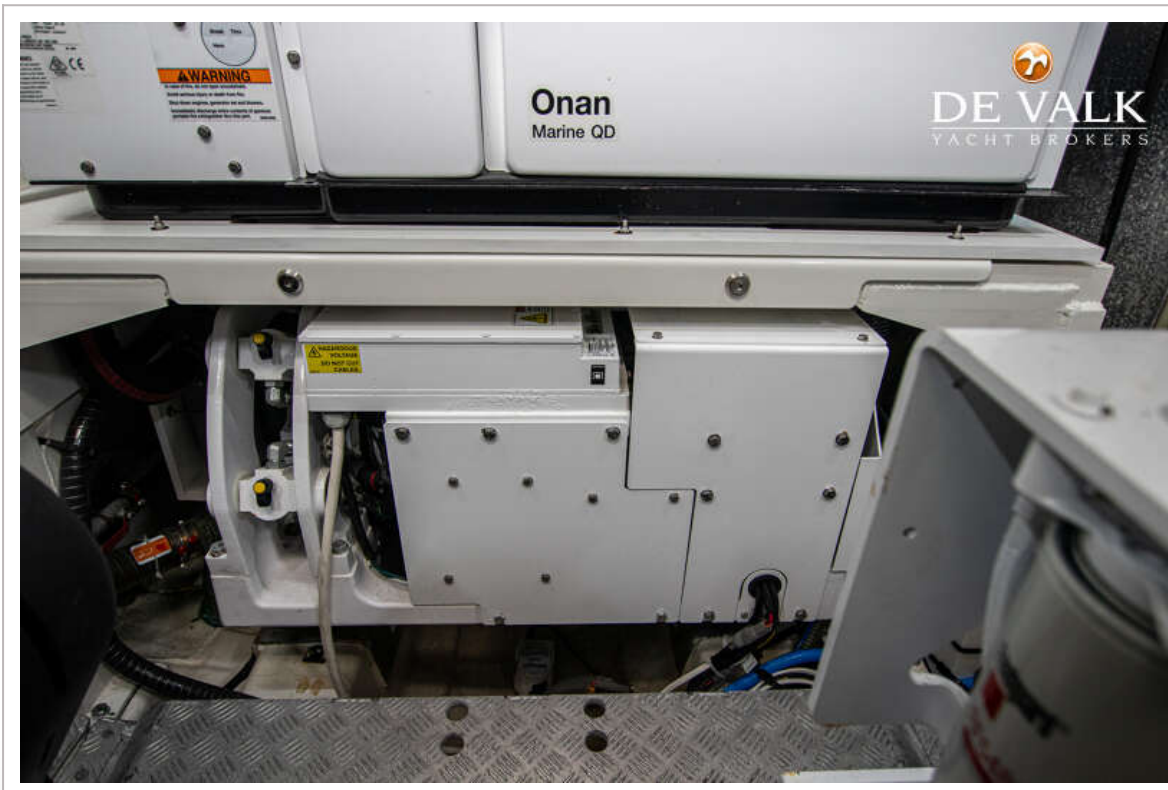
# PRESTIGE X60



# PRESTIGE X60



# PRESTIGE X60



# PRESTIGE X60

