



DE VALK
YACHT BROKERS



GIB SEA 43



DE VALK
YACHT BROKERS

BROKER'S COMMENTS

This Gibsea 43 is the 4 cabin version offering versatile accommodation options combined with the powerful sailing performance and strong construction these yachts are renowned for. Recently launched, she has new anodes, anti fouling and cutlass bearing etc and is now ready for new owners to step aboard and cruise.

Sofia Iliia-Salvanou

SPECIFICATIONS

Dimensions	12.20 x 4.19 x 1.80 (m)	Builder	GILBERT MARINE S.A.
Built	2002	Cabins	4
Material	GRP	Berths	10
Engine(s)	1 x VOLVO MD22 LB (4 cyl) diesel	Hp/Kw	50.00 (hp), 36.80 (kw)
Asking price	€ 74.000 (VAT Paid)	Lying	at sales office

CONTACT

Sales office	De Valk Corfu	Telephone	(+30) 6948681503
Address	New Port of Corfu, near Gouvia Marina 490 83 Corfu GR	E-mail	corfu@devalk.nl

DISCLAIMER

These particulars are given in good faith as supplied but cannot be guaranteed.



GENERAL

Model	GIB SEA 43
Type	sailing yacht
LOA (m)	12,20
Beam (m)	4,19
Draft (m)	1,80
Year built	2002
Builder	GILBERT MARINE S.A.
Country	France
Designer	J & J Design
Displacement (t)	7,7
Ballast (tonnes)	cast iron
Gross tonnage	14,81
Hull material	GRP
Rubbing strake	yes
Antifouling (year)	2026 & new anodes
Fuel tank (litre)	250 Lt
Freshwater tank (litre)	X 2 total capacity 530 Lt
Blackwater tank (litre)	X 2
Wheel steering	Twin wheels
Emergency tiller	yes

ACCOMMODATION

Cabins	4
Berths	10
Layout	4 Cabins 2 Heads
Saloon	yes
Heating	yes
Chart table	yes
Dinette	yes
Opening door to cockpit	yes



Galley	yes
Countertop	yes
Sink	yes
Cooker	2 Burner hob and grill
Oven	yes
Gas alarm	Detector x 1
Fridge	yes
Freezer	Within fridge
Hot water system	yes
Water pressure system	yes
Manual and/or foot pump	yes
Hot water tap	yes

MACHINERY

No of engines	1
Make	VOLVO
Type	MD22 LB (4 cyl)
HP	50
kW	36.80
Fuel	diesel
Year installed	2002
Engine cooling system	freshwater heat exchanger
Drive	shaft
Shaft seal	yes
Gearbox	Volvo
Bowthruster	yes
Propeller type	fixed
Propeller blades	X 3
Propeller shaft material	stainless steel
Manual bilge pump	yes
Electric bilge pump	X 1 automatic



Batteries	New 2025
Start battery	X 1
Service battery	X 2
Battery monitor	yes
Battery charger	yes
Shorepower	yes
Extra info	New cutlass bearings

NAVIGATION

Compass	yes
Depth sounder/log	Raymarine ST 60
Windset	yes
VHF	DSC
Autopilot	Self steering
Radar	Raymarine
GPS	Raymarine
Plotter/GPS	Raymarine
EPIRB	yes

EQUIPMENT

Sprayhood	yes
Bimini	yes
Cockpit cushions	yes
Cockpit table	yes
Bathing platform	Sugar scoop transom
Boarding ladder	Passarelle
Deck shower	yes
Anchor	Delta
Anchor chain	50 m (2025)
Anchor 2	CQR Plough Kedge
Windlass	electrical Lofrans



Dinghy	yes
Outboard	HONDA 2,5 Hp 4 stroke new (2024)
Sea railing	yes
Life raft	Needs service
Lifejackets	X 4
Safety harness	X 4
Lifebuoy	X 2
Fenders	yes
Fire extinguisher	X 2

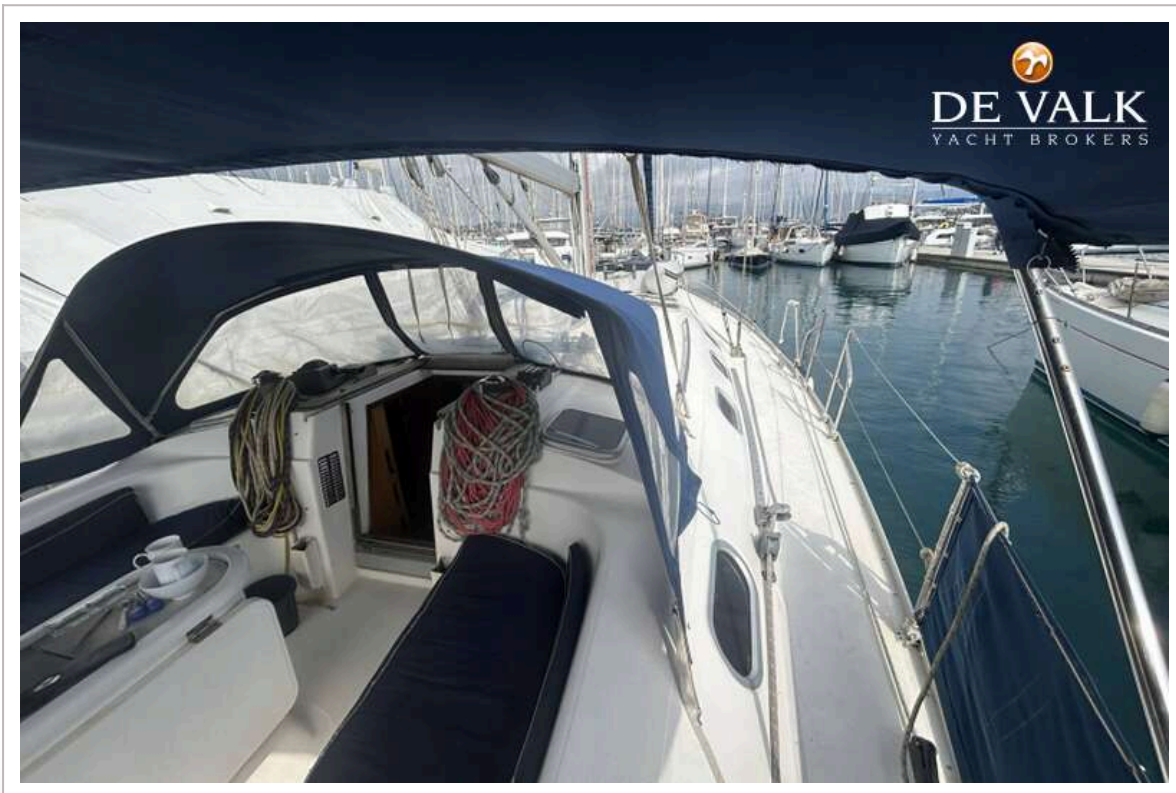
RIGGING

Rigging	sloop
Standing rigging	Stainless steel wire
Material mast	aluminium
Mainsail	In mast reefing (2022)
Genoa	Furling (2002)
Spinnaker	yes
Reefing System	main in-mast furling
Primary sheet winch	X 2 Lewmar electric powered
Extra info	Coachroof Lewmar

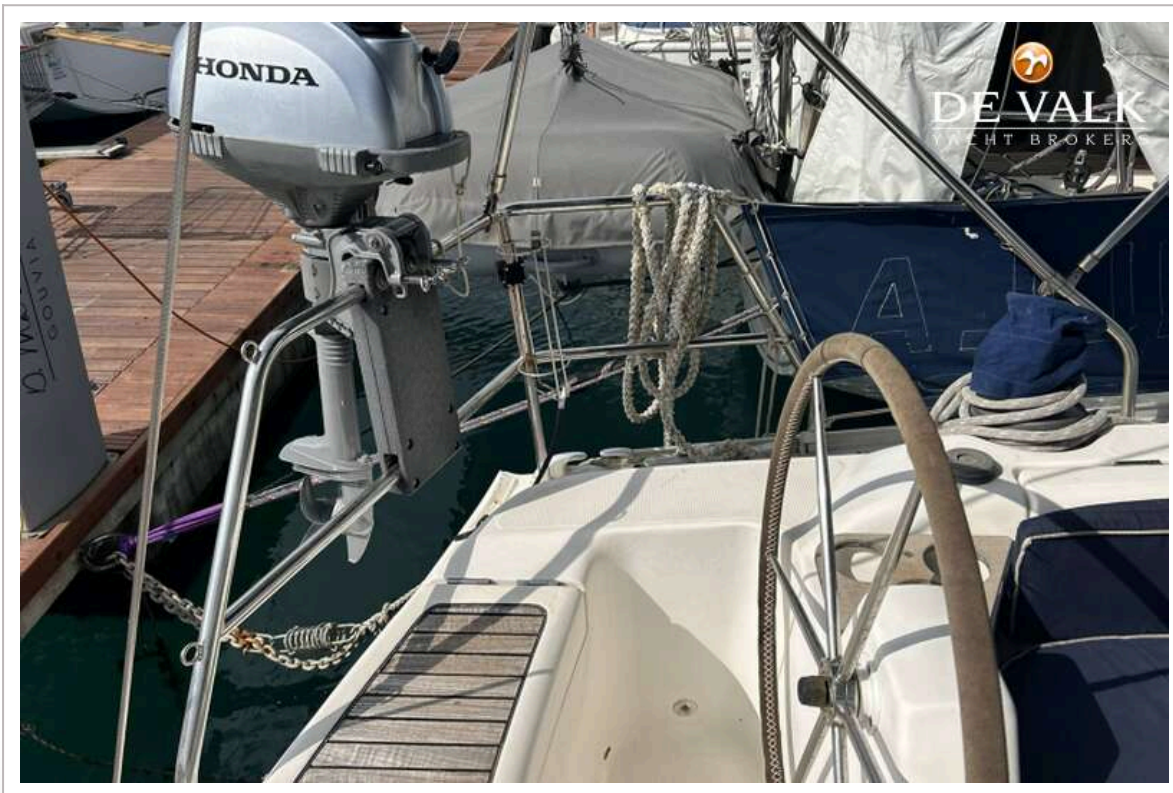






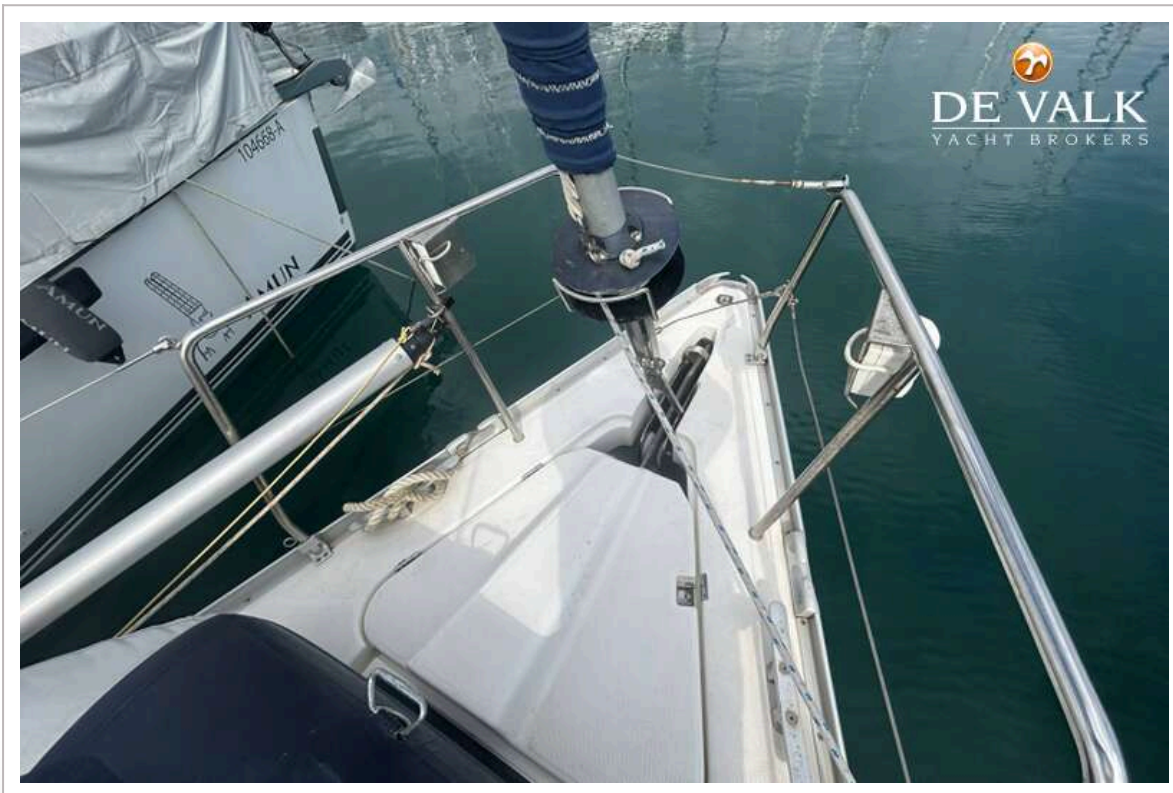


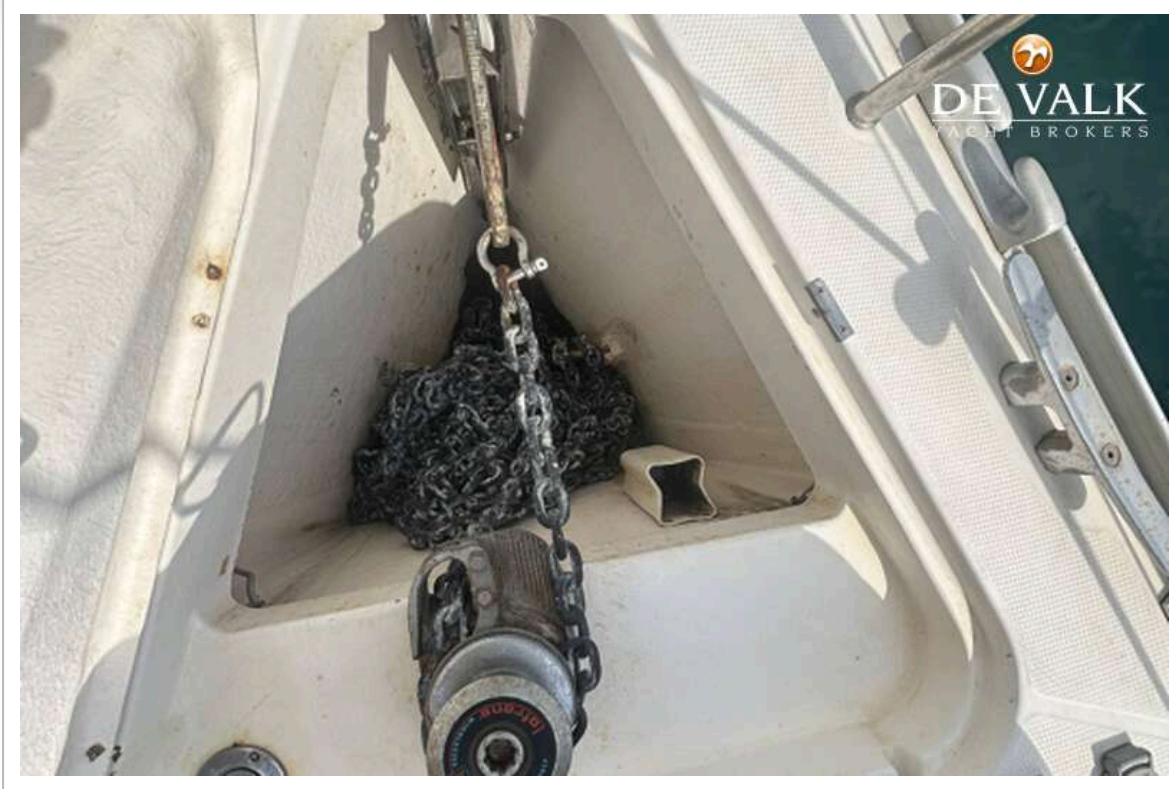




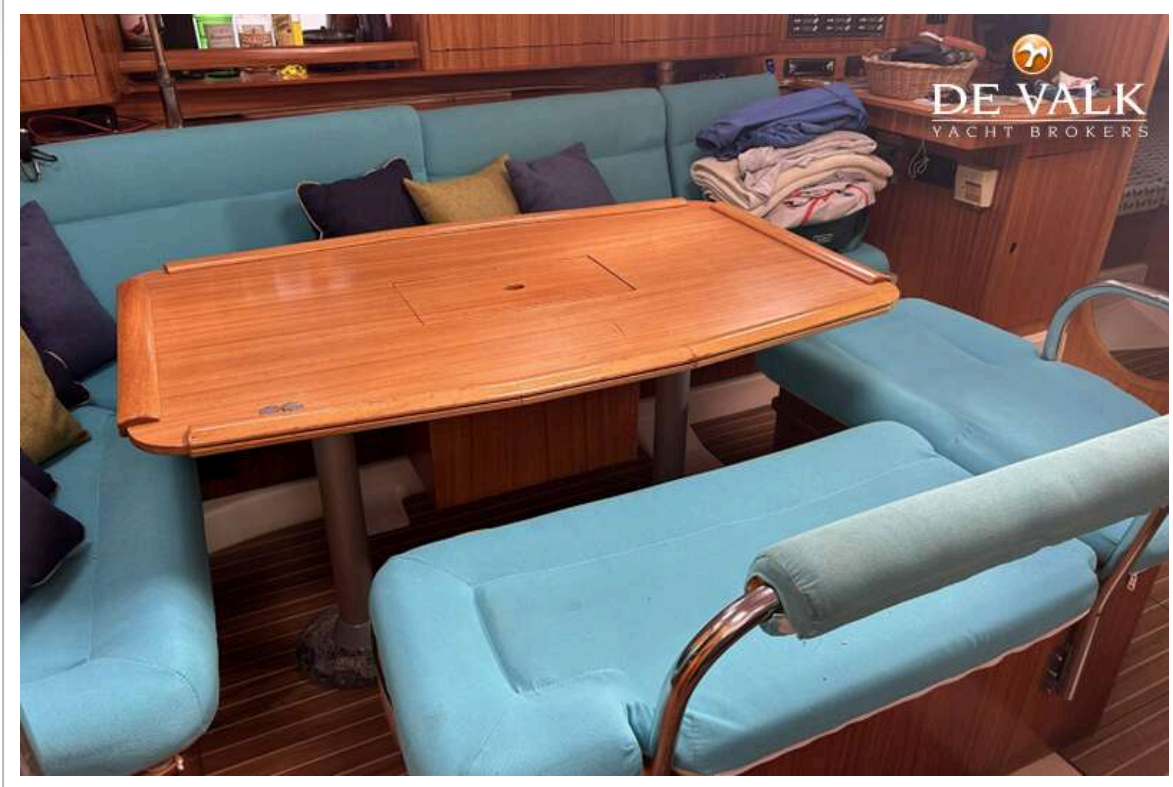


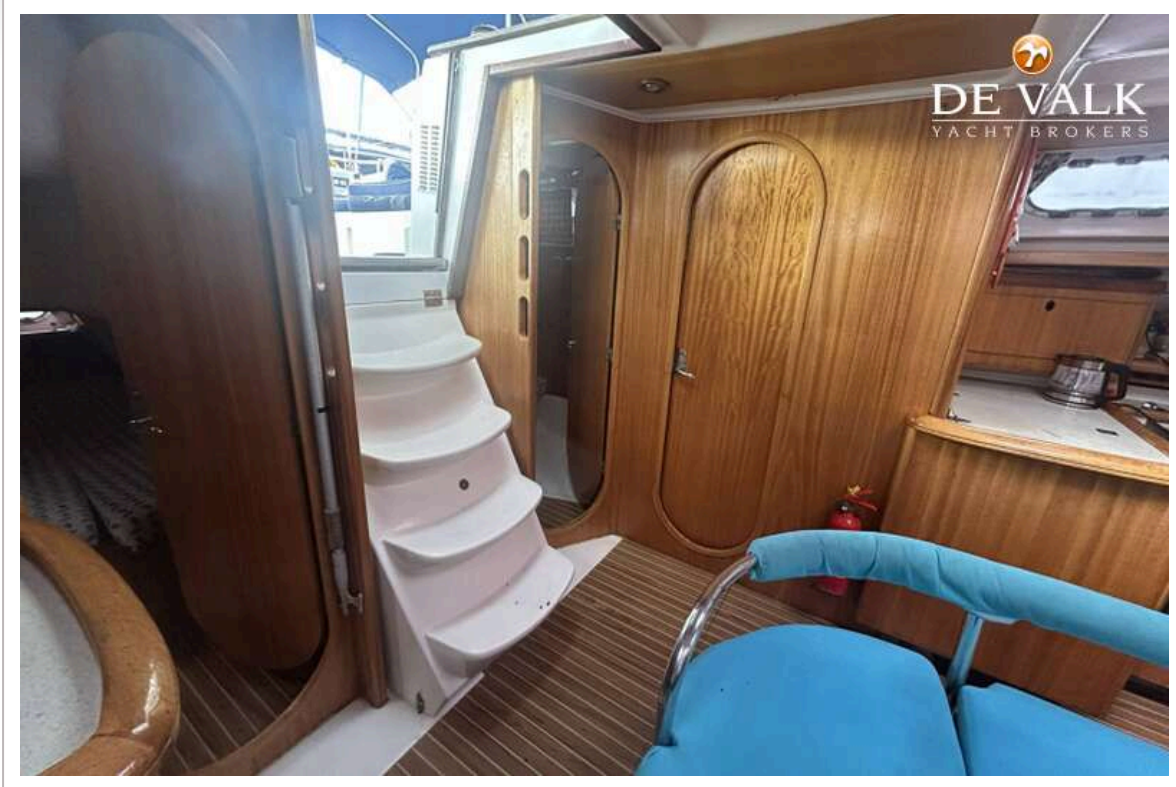


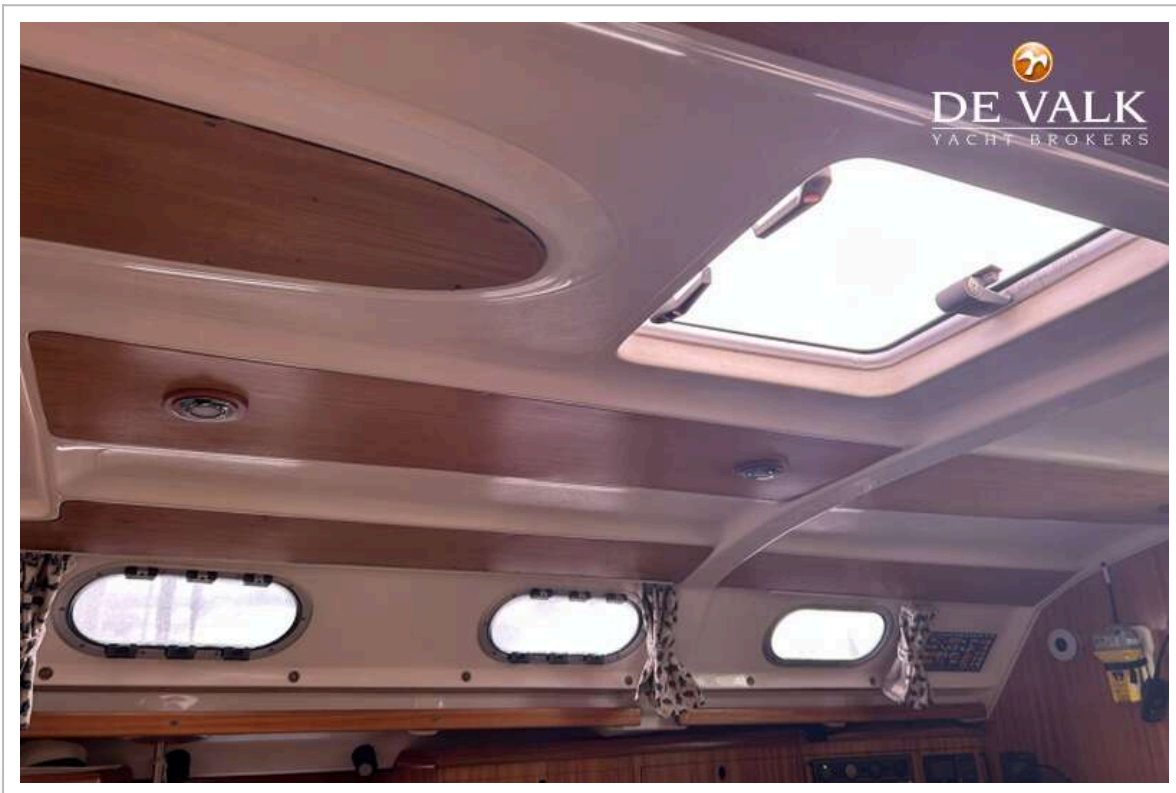




GIB SEA 43

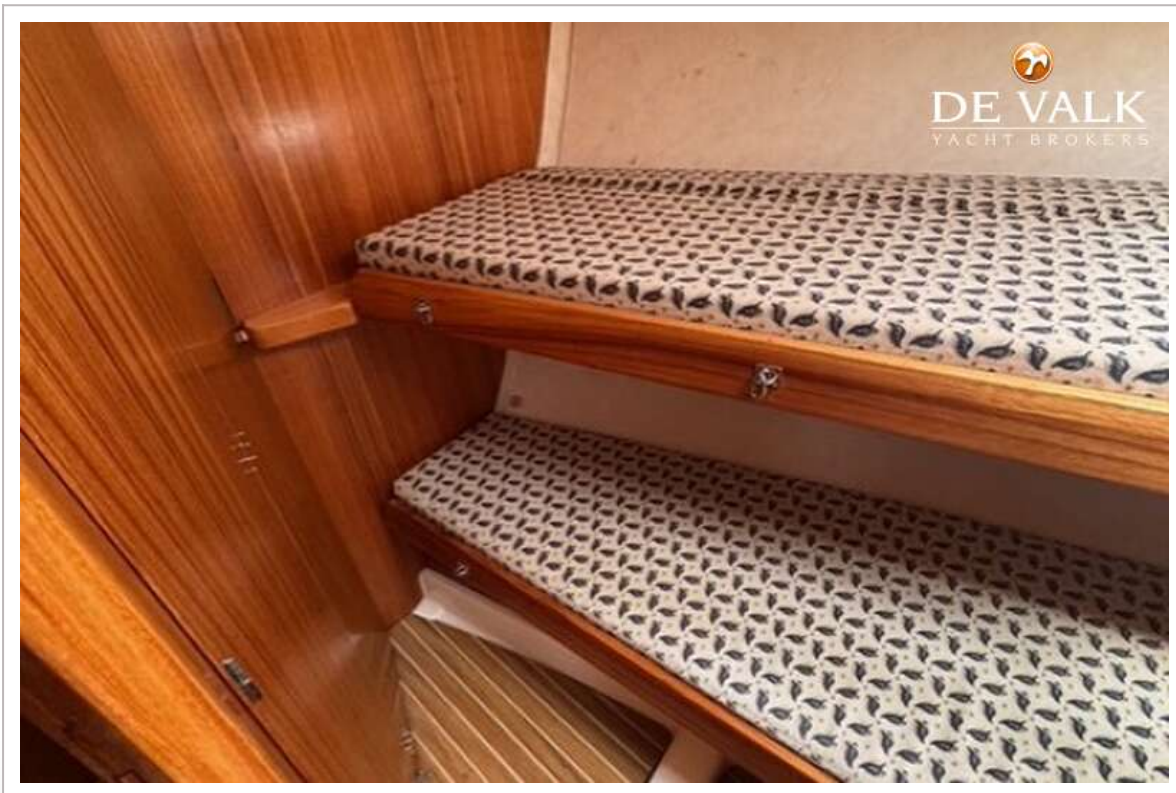




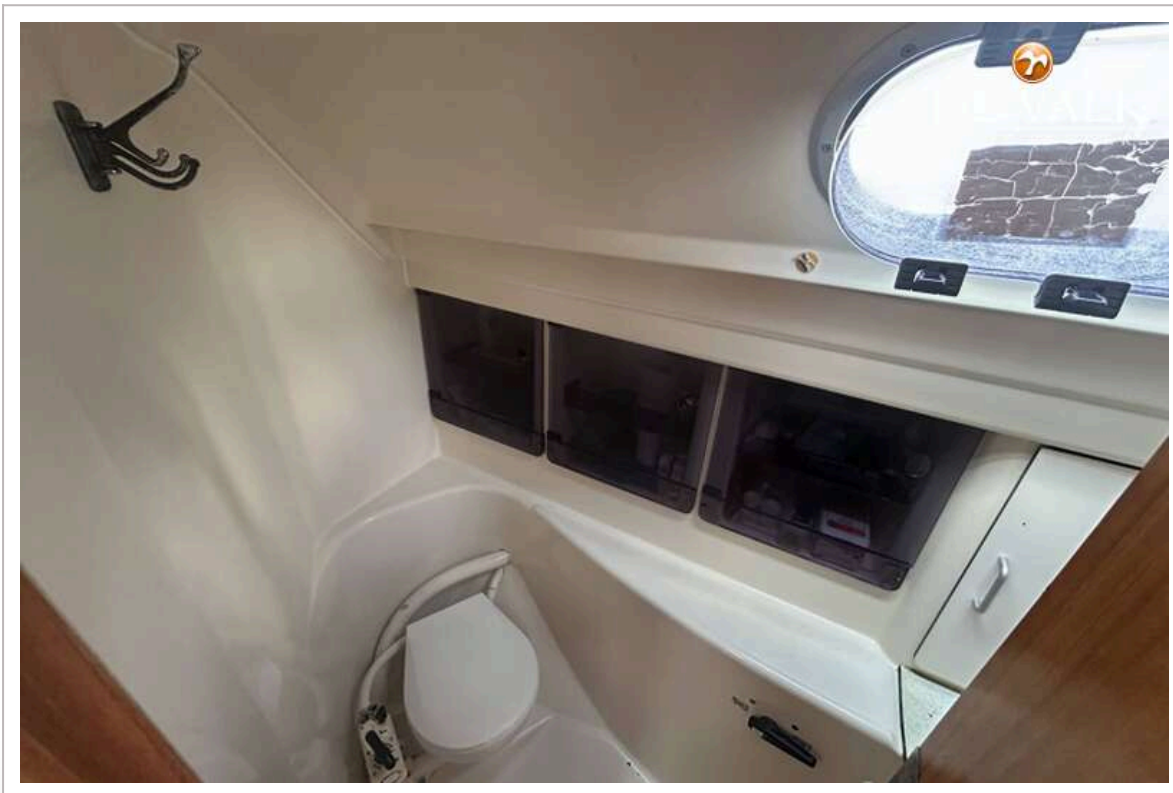
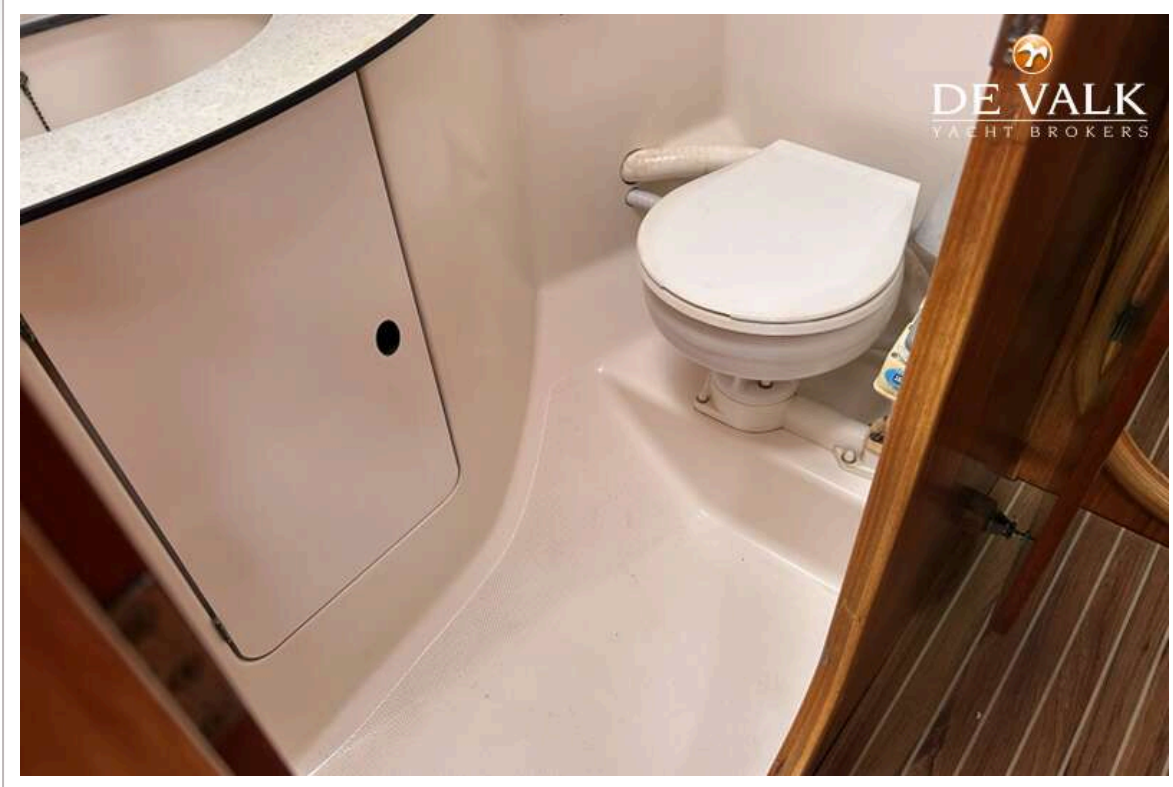


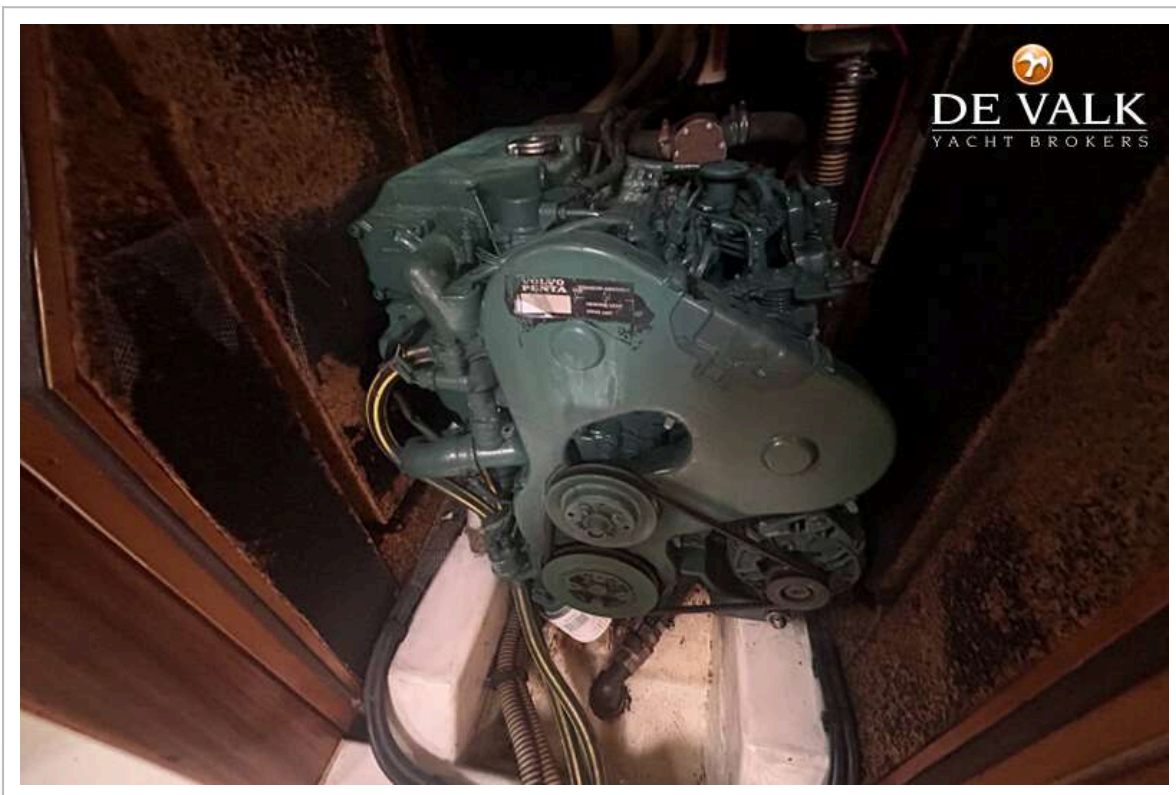












GIB SEA 43

