



DE VALK
YACHT BROKERS



ALLURES 45.9



DE VALK
YACHT BROKERS

BROKER'S COMMENTS

Family version of the popular blue water cruiser with one owner.. Slightly used and only 850 hours on the engine.

Henrik Trygg

SPECIFICATIONS

Dimensions	14.75 x 4.43 x 1,30 / 2.93 (m)	Builder	GRAND LARGE YACHTING, ALLURES FRANCE
Built	2019	Cabins	3
Material	Aluminium	Berths	4
Engine(s)	1 x Volvo penta D2 60 diesel	Hp/Kw	60.00 (hp), 44.16 (kw)
Asking price	Under Offer (VAT)	Lying	

CONTACT

Sales office	De Valk Stockholm	Telephone	+46 70 55 26 545
Address	Stockholm Region Stockholm SE	E-mail	stockholm@devalk.nl

DISCLAIMER

These particulars are given in good faith as supplied but cannot be guaranteed.



ALLURES 45.9

GENERAL

Model	ALLURES 45.9
Type	sailing yacht
LOA (m)	14,75
Beam (m)	4,43
Draft (m)	2,93
Draft min (m)	1,30
Air draft (m)	19,50
Year built	2019
Builder	GRAND LARGE YACHTING, ALLURES FRANCE
Country	France
Displacement (t)	12,6
CE norm	A
Hull material	aluminium
Keel type	Centerboard
Deck material	Composite
Deck finish	Dek-King 2g
Cockpit deck finish	Dek-King 2g
Antifouling (year)	2025
Insulation	yes
Fuel tank (litre)	625
Level indicator (fuel tank)	yes
Freshwater tank (litre)	420
Level indicator (freshwater)	yes
Wheel steering	yes

ACCOMMODATION

Cabins	3
Berths	4
Saloon	yes
Heating	Eberspracher D5



ALLURES 45.9

Chart table	yes
Galley	yes
Sink	yes
Cooker	# burner
Oven	EspaceLevante 3
Fridge	yes
Freezer	yes
Hot water system	yes
Water pressure system	yes
Owners cabin	Double bed can be separated to 2 singel beds
Wardrobe	yes
Bathroom	yes
Toilet	yes
Wash basin	yes
Shower	yes
Guest cabin 1	yes
Wardrobe	yes
Bathroom	yes
Toilet	yes
Toilet system	Electric
Shower	yes
Guest cabin 2	Currently a technical room, easily change to double bed
Washing machine	3kg

MACHINERY

No of engines	1
Make	Volvo penta D2 60
HP	60
kW	44.16
Fuel	diesel
Year installed	2019



Engine hours	850
Drive	sail-drive
Bowthruster	Maxpower 125mm 96kg
Propeller type	Autofeathering Gori prop
Propeller blades	3
Batteries	4 Victron AGM 108ah (2025)
Bowthruster battery	2 Optima 60ah 2024
Windlass battery	yes
Battery monitor	yes
Battery charger	Sterling
Battery charger/inverter	Victron 70ah/1600w
Wind generator	Superwind 400
Solar panel	2x485w
Shorepower	yes
Insulation transformer	3600w

NAVIGATION

Compass	yes
Multi control display	3 Triton
Depth sounder	2025
Windset	yes
VHF	yes
VHF handheld	Icom 2023
Autopilot	B&G
Radar	B&G
GPS	B&G Zeus 9
Wifi antenna	yes
AIS transceiver	yes
EPIRB	Mc Murdo
Navigation lights	yes
Extra info	Iridium Go



EQUIPMENT

Sprayhood	yes
Sprayhood with grab rail	yes
Bimini	yes
Winter cover	Wintertent Topgun
Cockpit table	yes
Boarding ladder	yes
Deck shower	yes
Anchor	Rocna 33kg
Anchor chain	80m 10mm
Anchor 2	Vulcan 15kg in aft
Windlass	yes
Deck wash	yes
Dinghy	Aluminium
Outboard	Honda Bf10
Davits	yes
Grab rail (superstructure)	yes
Life raft	Plastimo 2019
Life raft (pers)	6
Lifejackets	2
Safety harness	4
Lifebuoy	yes
Safety lines on deck	yes
Fenders	yes
Mooring lines	yes
TV	Samsung
Radio	Fusion
Cockpit speakers	yes
Speakers in salon	yes
Fire extinguisher	yes

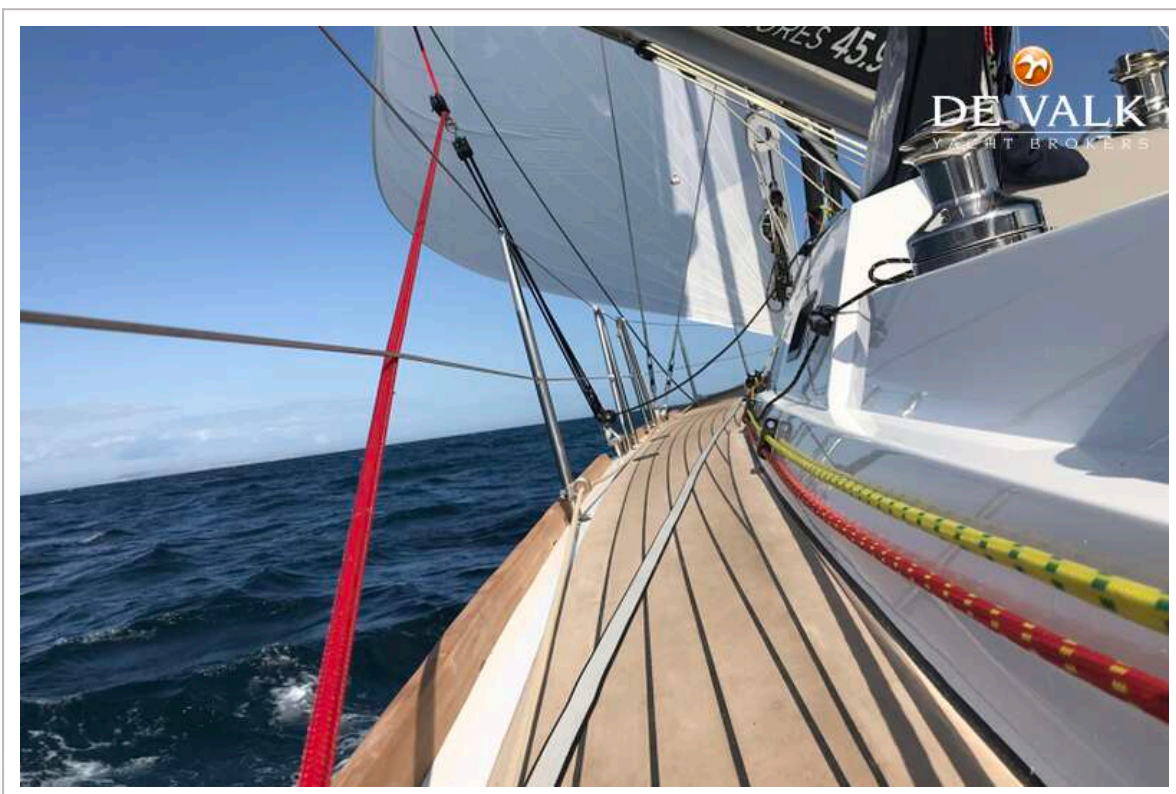


RIGGING

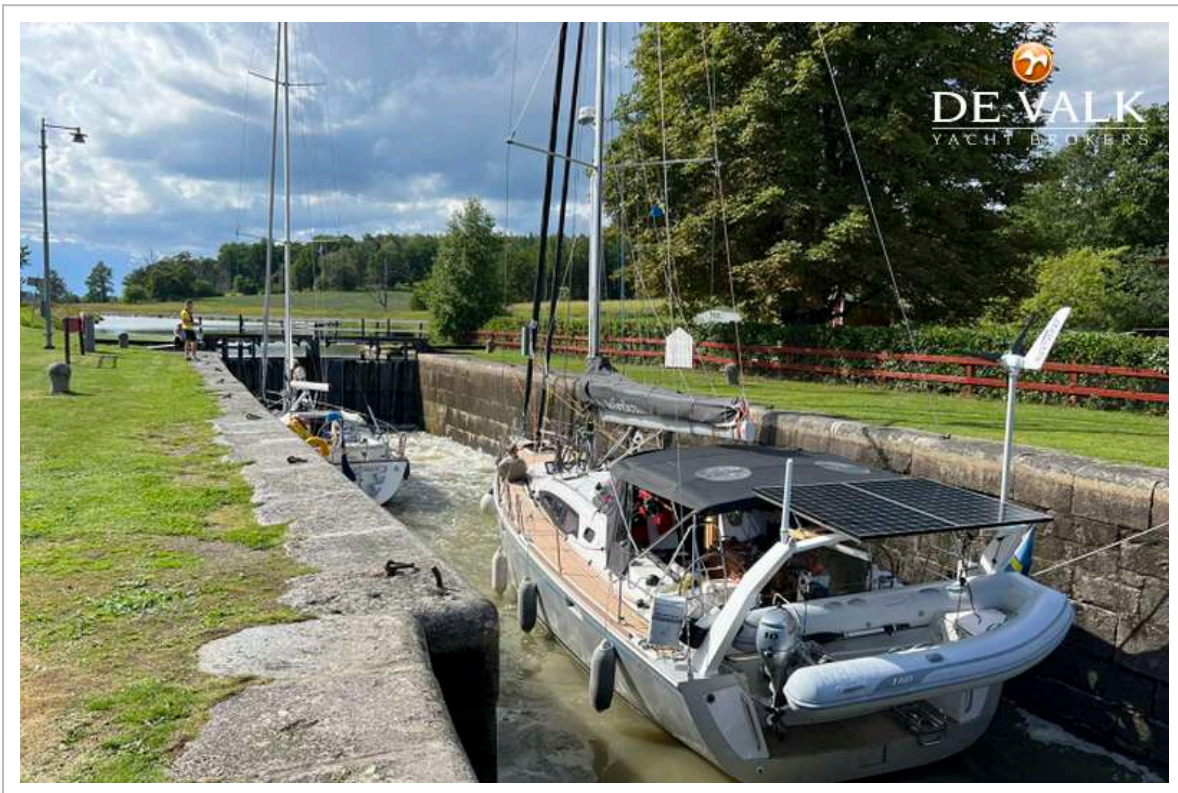
Mainsail	Fully battend on cars
Mainsail cover	Lazybag
Battcars	yes
Fully battened mainsail	yes
Genoa	yes
Code Zero	yes
Staysail	yes
Staysail furler	yes
Backstay adjuster	yes
Boomvang	yes
Primary sheet winch	2 andersen 45ST Electric
Secondary sheet winch	2 Andersen 40ST
Halyard winches	1 Andersen 46 ST Electric
Multifunctional winches	1 Andersen 40ST on mast
Spi-pole	yes



ALLURES 45.9



ALLURES 45.9



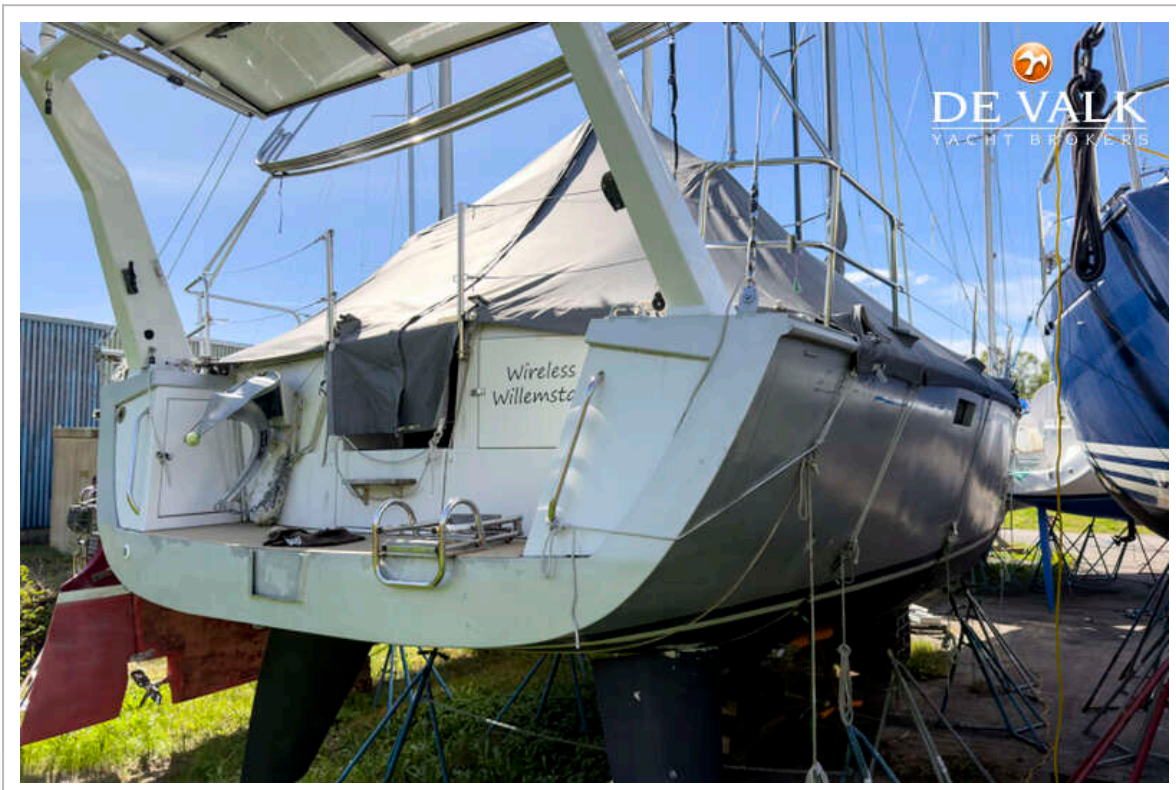
ALLURES 45.9



ALLURES 45.9

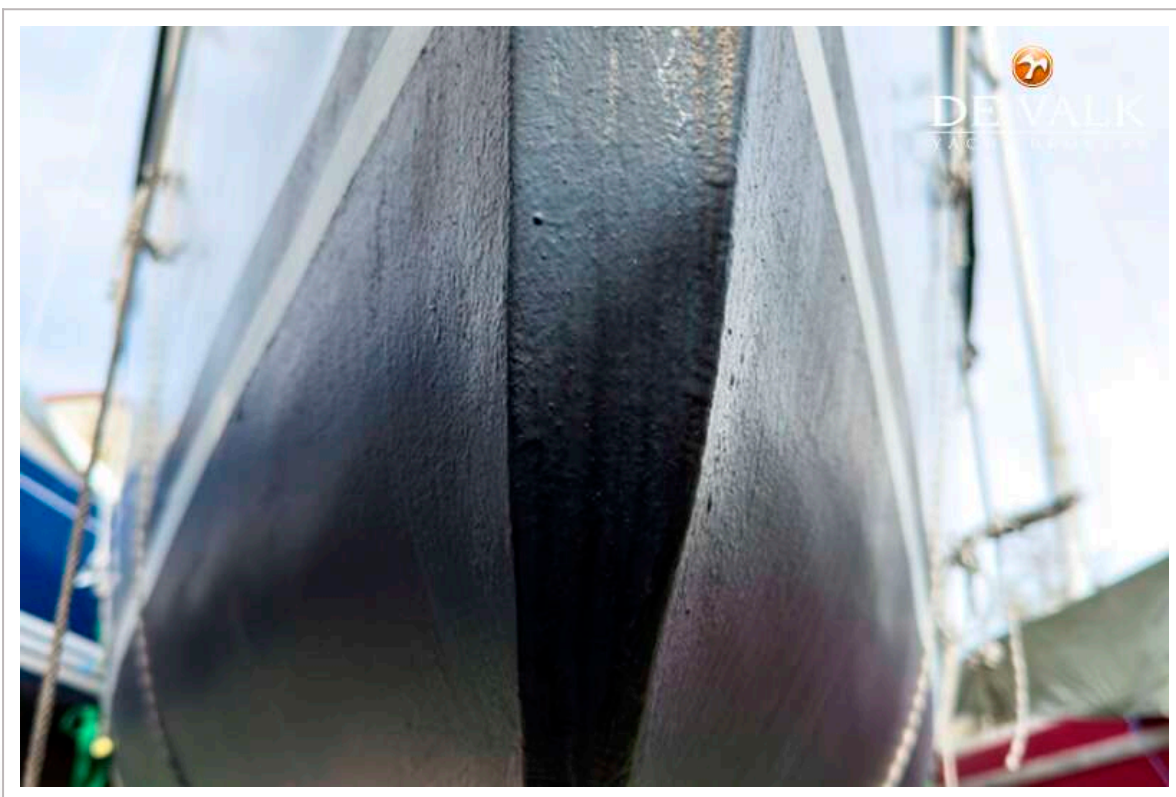


ALLURES 45.9



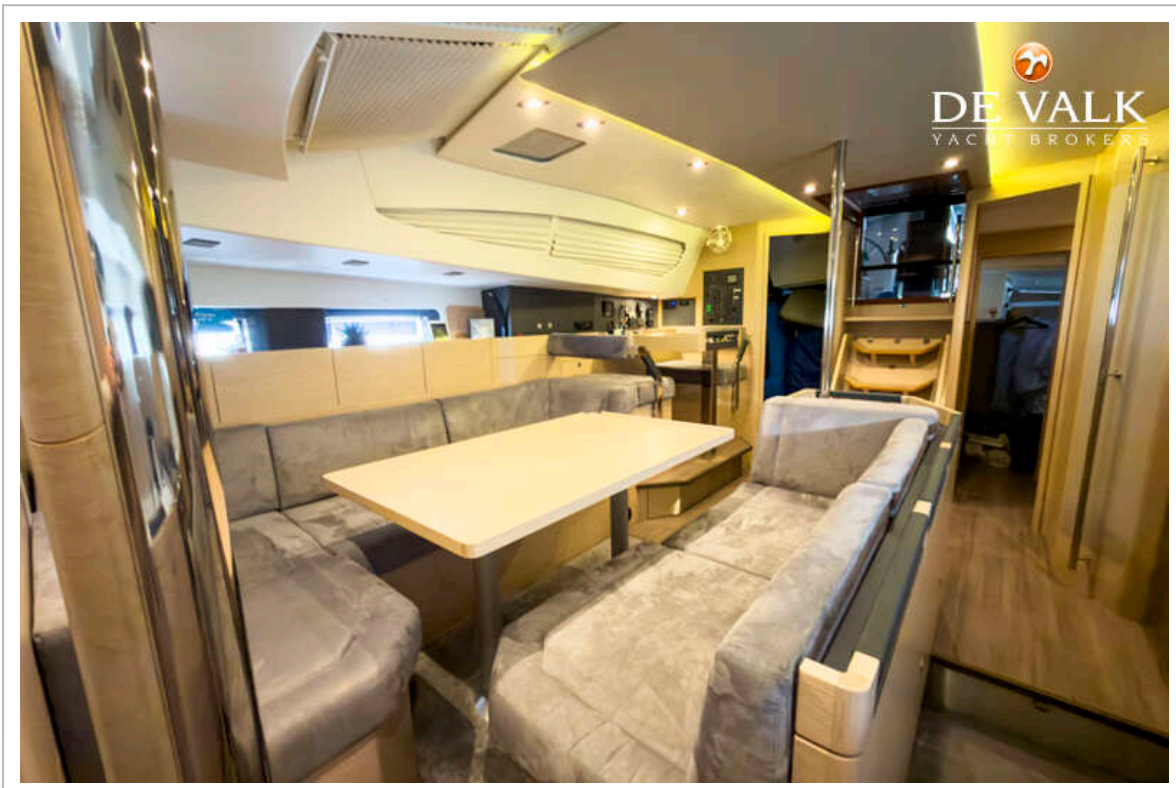
ALLURES 45.9







ALLURES 45.9

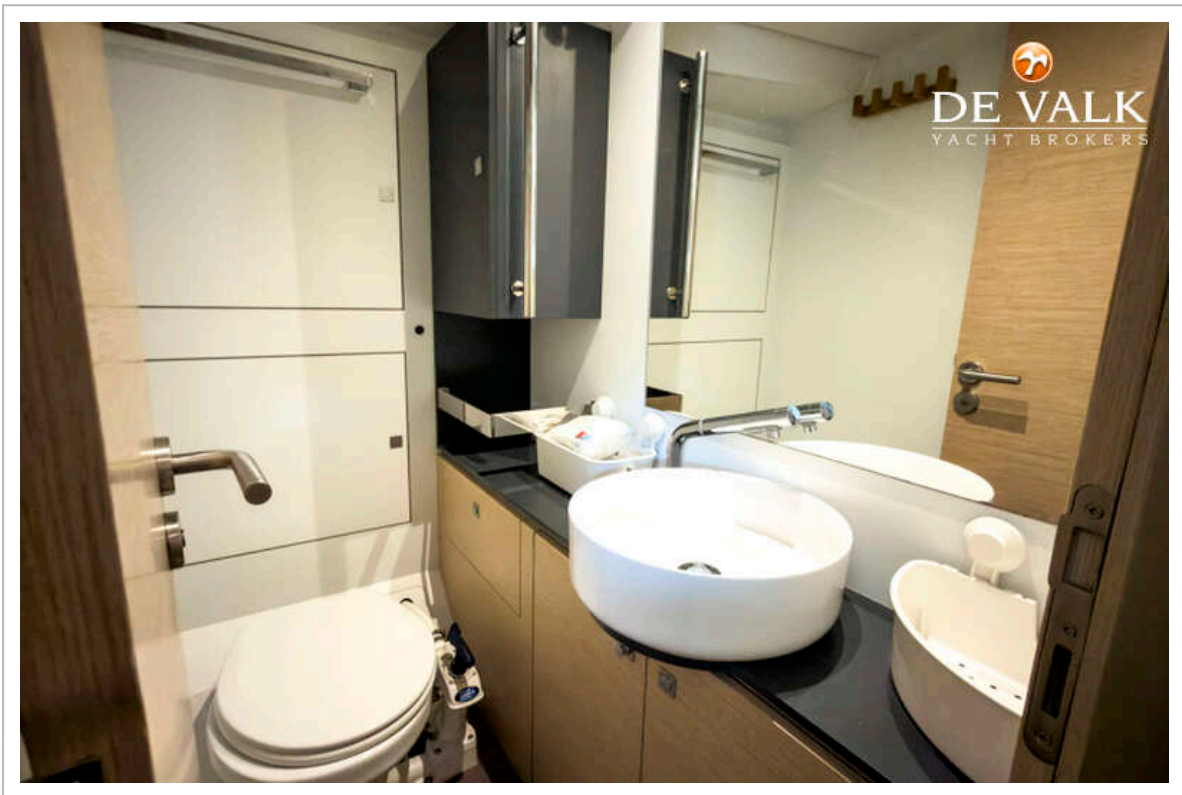


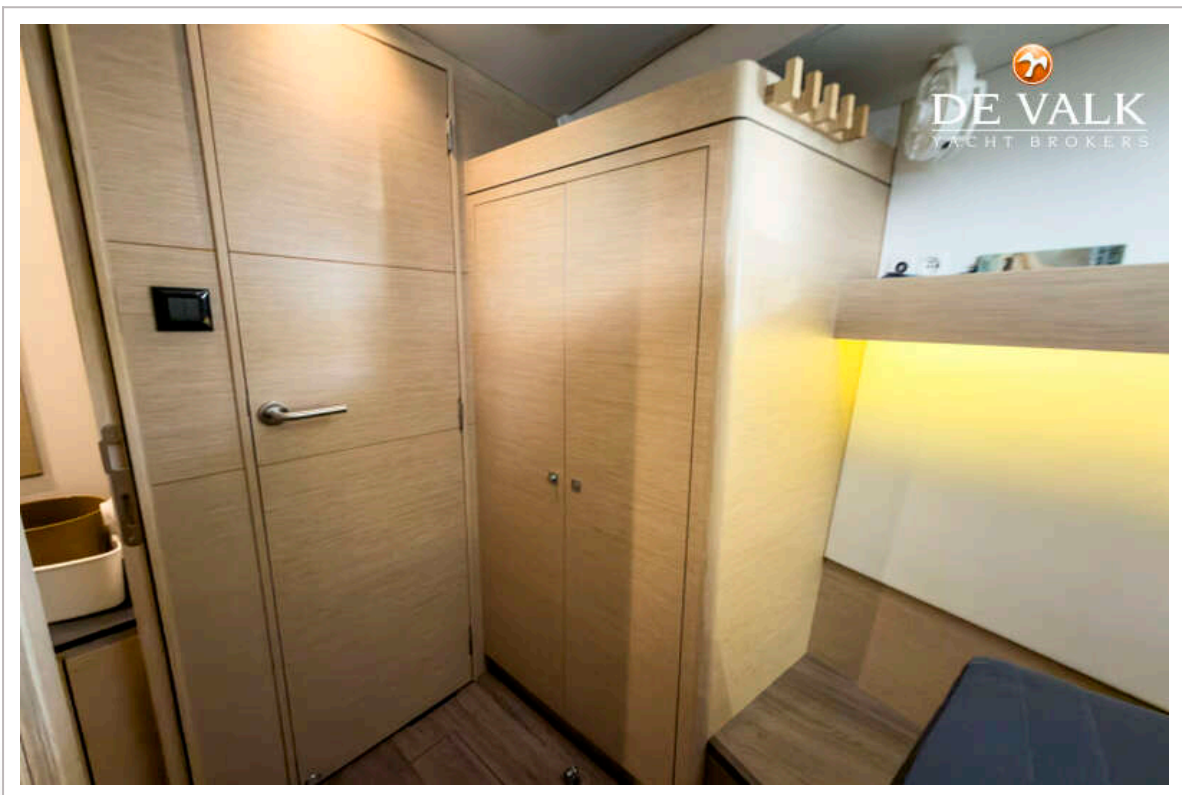
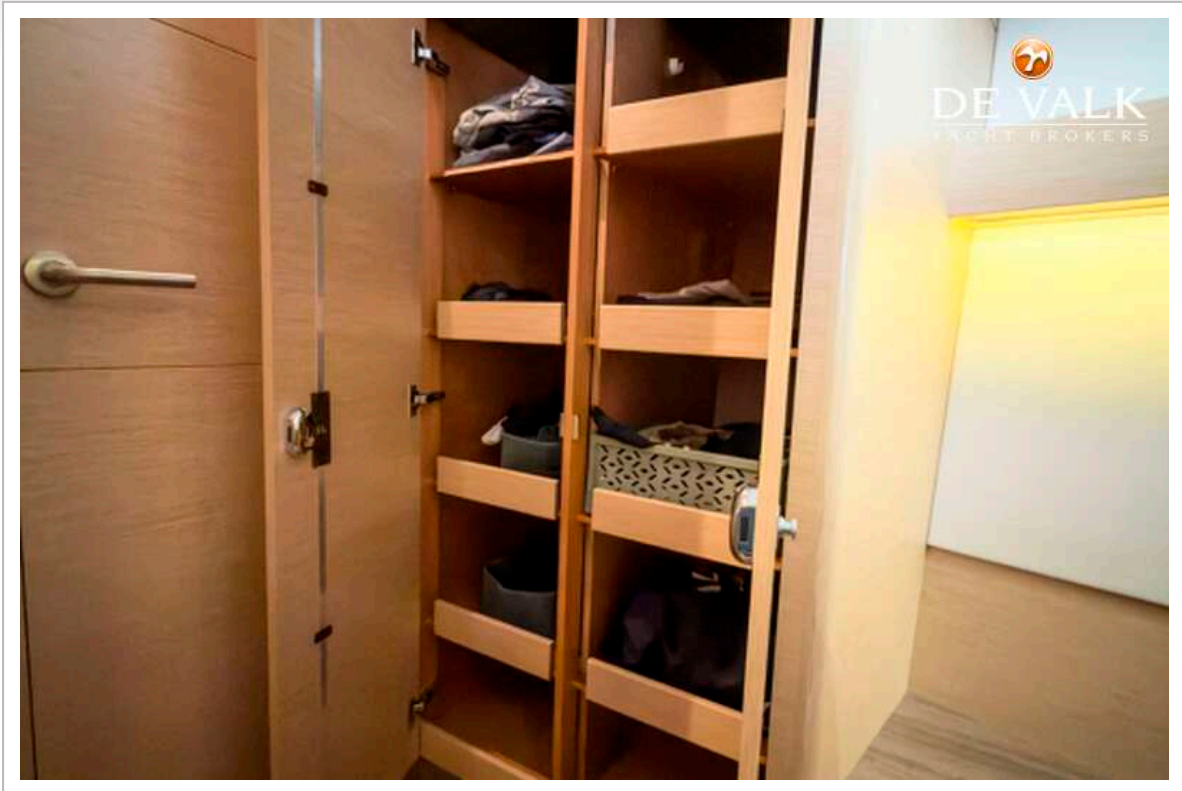
ALLURES 45.9



ALLURES 45.9

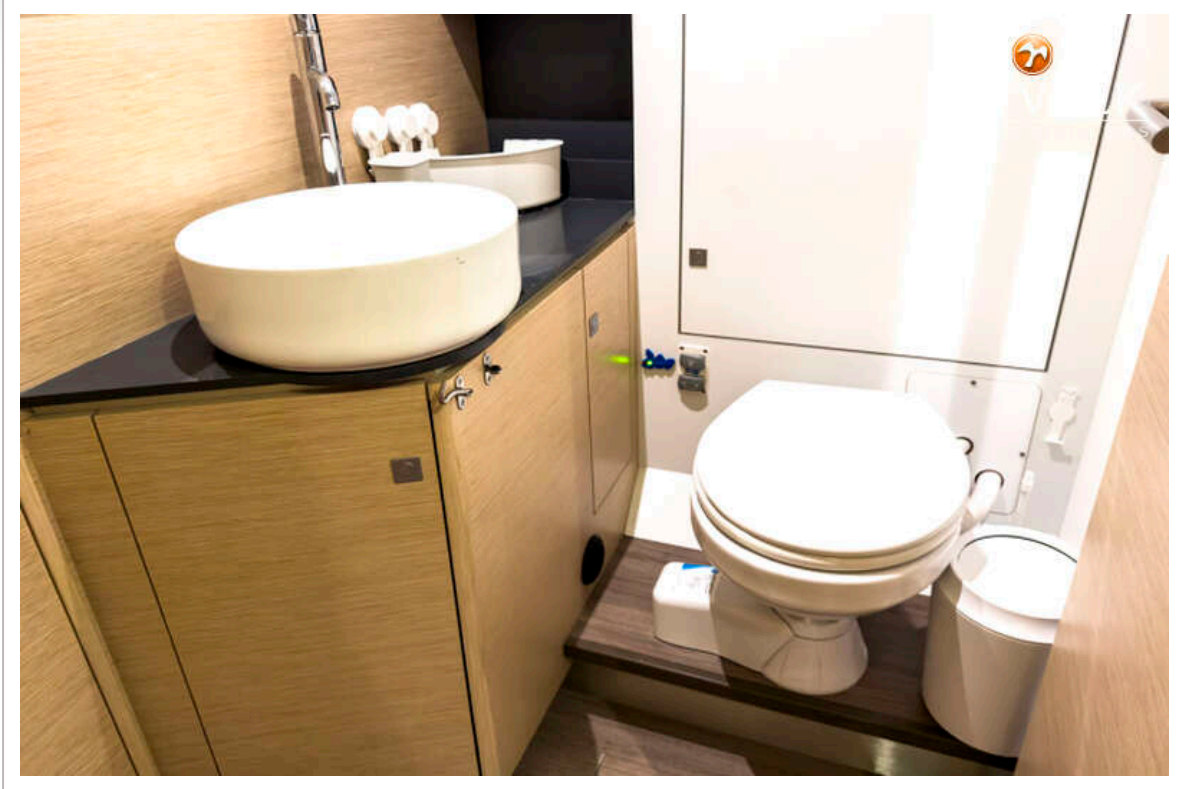






ALLURES 45.9





ALLURES 45.9

