



DE VALK
YACHT BROKERS



DEHLER 42 C



DE VALK
YACHT BROKERS

BROKER'S COMMENTS

For a buyer looking for a dual-purpose yacht that can dominate on the race course on Saturday and provide a sophisticated family cruising platform on Sunday, this Dehler 42 is undoubtedly the best example currently on the market."

Nico Stillitano

SPECIFICATIONS

Dimensions	12.42 x 3.91 x 2.38 (m)	Builder	Hanse Yachts A.G.
Built	2019	Cabins	3
Material	GRP	Berths	6
Engine(s)	1 x YANMAR 3YM30AE diesel	Hp/Kw	29.00 (hp), 21.34 (kw)
Asking price	€ 270.000 (VAT Paid)	Lying	Italy

CONTACT

Sales office	De Valk Rome	Telephone	+39 06 65 81221
Address	c/o Nautilus Marina Srl, Via Monte Cadria, 127 00054 Fiumicino Roma IT	E-mail	rome@devalk.nl

DISCLAIMER

These particulars are given in good faith as supplied but cannot be guaranteed.



GENERAL

Model	DEHLER 42 C
Type	sailing yacht
LOA (m)	12,42
LWL (m)	11,50
Beam (m)	3,91
Draft (m)	2,38
Year built	2019
Launched	2019
Builder	Hanse Yachts A.G.
Country	Germany
Designer	Judel&wrolik
Displacement (t)	8,7
CE norm	A
Hull material	GRP
Hull colour	white
Keel type	bulb keel Competition keel
Superstructure material	GRP
Rubbing strake	aluminum
Deck material	GRP
Deck finish	non-skid moulded in
Cockpit deck finish	synthetic teak
Antifouling (year)	2025
Window frame	aluminium
Deckhatch	yes
Portholes	yes
Fuel tank (litre)	polyethylene 160
Level indicator (fuel tank)	yes
Freshwater tank (litre)	steel 250
Level indicator (freshwater)	yes
Blackwater tank (litre)	polyethylene 2x35l



Level indicator (blackwater)	yes
Blackwater tank extraction	deck extraction + uw line
Wheel steering	cable steering
Emergency tiller	yes

ACCOMMODATION

Cabins	3
Berths	6
Interior	teak
Floor	wood
Saloon	Saloon with L-galley
Chart table	Sliding chart table on port
Dining room	Dining area on stb
Dinette	yes
Sliding door to cockpit	yes
Galley	2-burner gas stove, waste bin, 12 V fridge approx. 130 l, double stainless steel sink with mixing tap
Countertop	corian White
Sink	stainless steel
Cooker	calor gas
Oven	yes
Fridge	130l
Hot water system	220V + engine
Water pressure system	electrical
Owners cabin	double bed
Wardrobe	hanging/drawers/shelves
Bathroom	en suite
Toilet	en suite
Toilet system	manual
Wash basin	in the cabin
Shower	en suite



Guest cabin 1	double bed
Wardrobe	hanging and drawers
Bathroom	shared
Toilet	shared
Toilet system	manual
Wash basin	at the toilet
Shower	shared
Guest cabin 2	double bed
Wardrobe	drawers and shelves

MACHINERY

No of engines	1
Make	YANMAR
Type	3YM30AE
HP	29
kW	21.34
Fuel	diesel
Year installed	2019
Consumption (l/hr)	8
Range (nm)	3200
Engine cooling system	freshwater heat exchanger
Drive	sail-drive
Engine controls	bowden cable
Gearbox	mechanical
Propeller type	folding
Propeller blades	2
Manual bilge pump	yes
Electric bilge pump	yes
Start battery	1
Service battery	2
Battery charger	Mastervolt



Shorepower with cable

NAVIGATION

Compass	yes
Multi control display	2 B&G H5000
Log	yes
Windset	B&G
VHF	B&G V50
VHF handheld	B&G H50
Autopilot	B&G H5000
GPS	yes
Plotter	yes
Plotter/GPS	1 B&G Zeus 9 Helm position stb-1 B&G Zeus 12 on chart table
PC connection	B&G CPU Hydra

EQUIPMENT

Bathing platform	yes
Boarding ladder	steel
Deck shower	yes
Anchor	yes
Anchor chain	yes
Windlass	electrical
Pushpit	yes
Pulpit	yes
Radar reflector	yes
Fenders	yes
Mooring lines	yes

RIGGING

Rigging	sloop
---------	-------



Standing rigging	Rod
Brand mast	Pauger
Material mast	carbon
Spreaders	2
Keel stepped mast	yes
Mainsail	yes
Battcars	yes
Fully battened mainsail	yes
Genoa	yes
Backstay adjuster	hydraulic
Boomvang	gasspring
Primary sheet winch	1 Lewmar 45 Race electric stb- 1 Lewmar 45 Race manual
Secondary sheet winch	4 Lewmar 50 Race manual



DEHLER 42 C



DEHLER 42 C



DEHLER 42 C



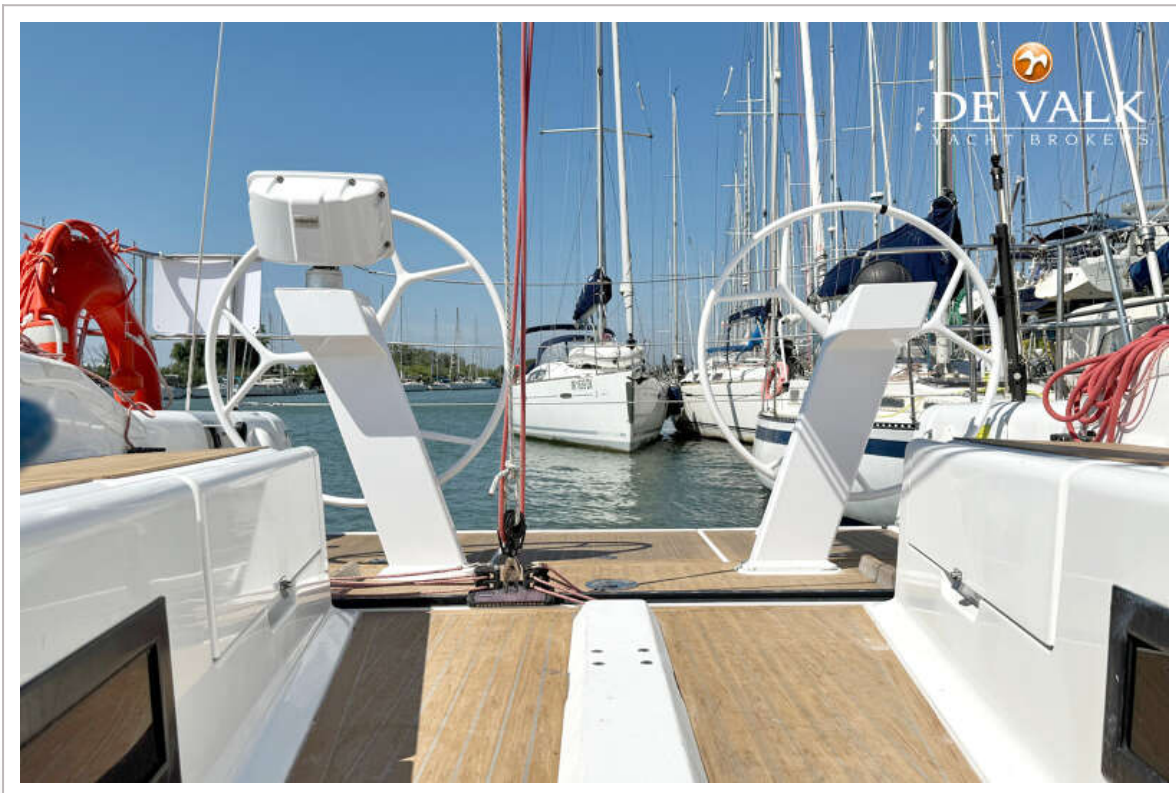
DEHLER 42 C



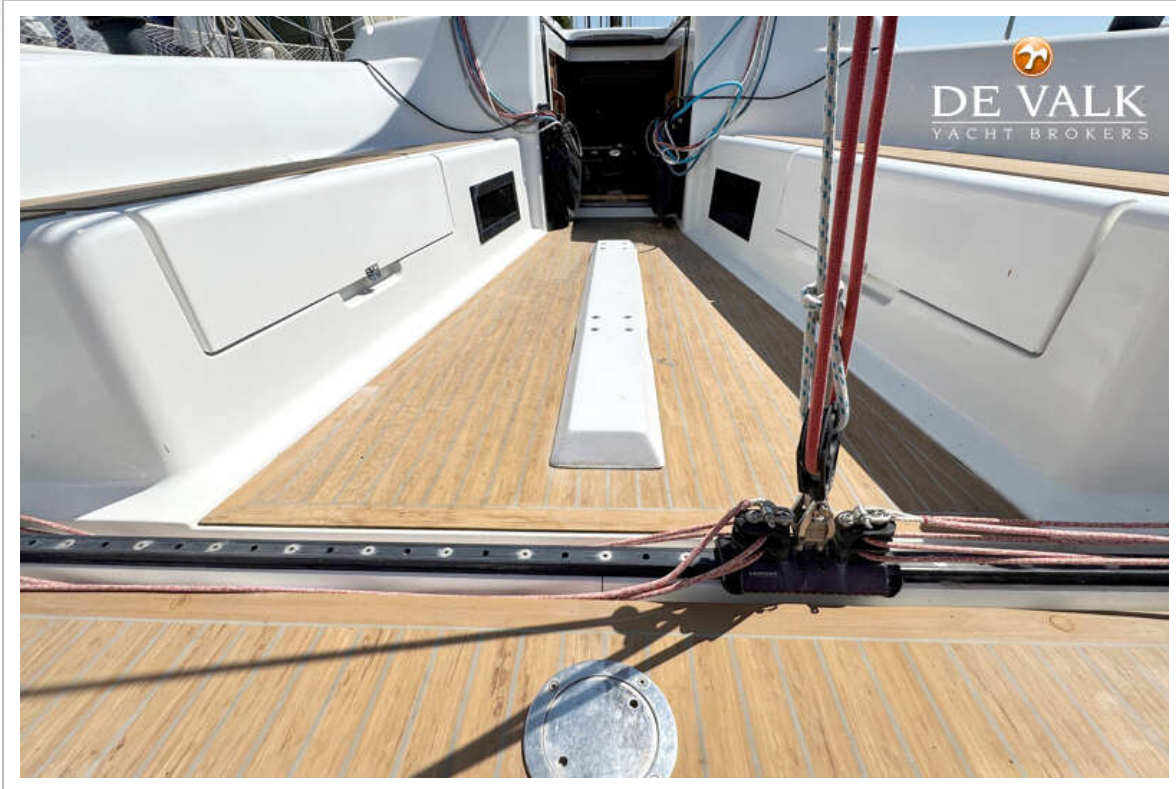
DEHLER 42 C



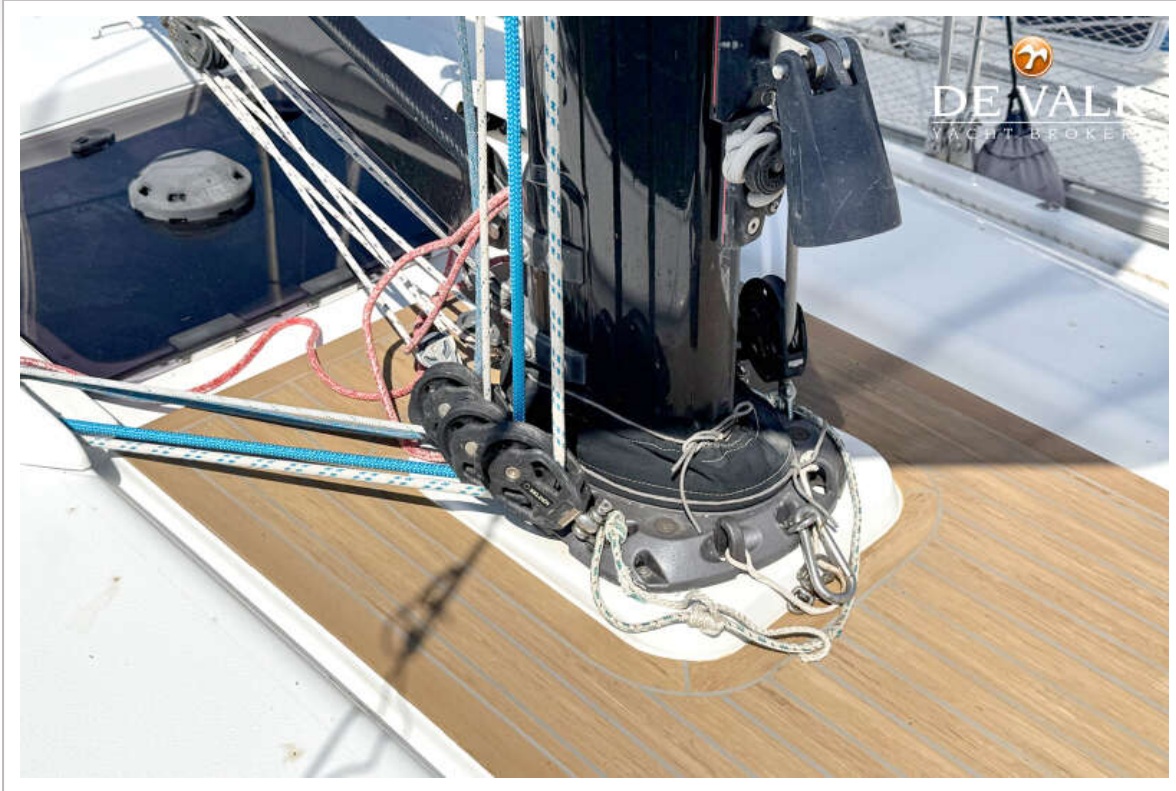
DEHLER 42 C



DEHLER 42 C



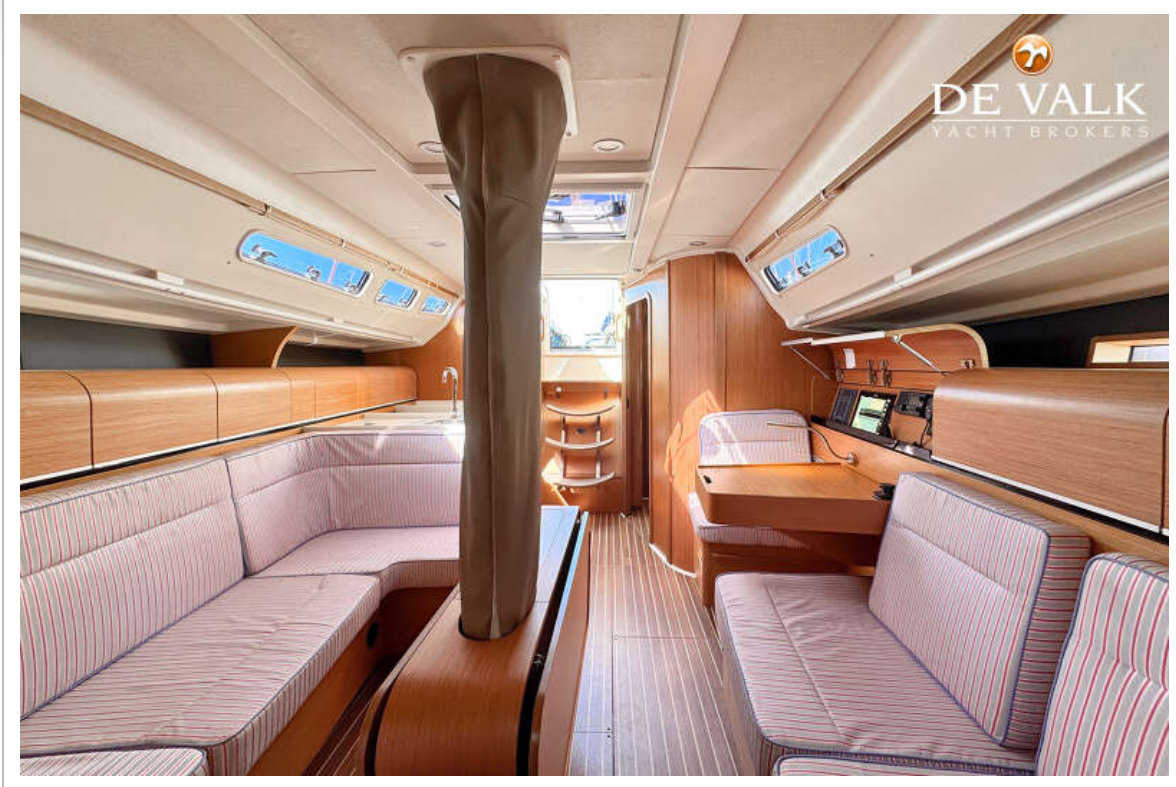
DEHLER 42 C



DEHLER 42 C



DEHLER 42 C



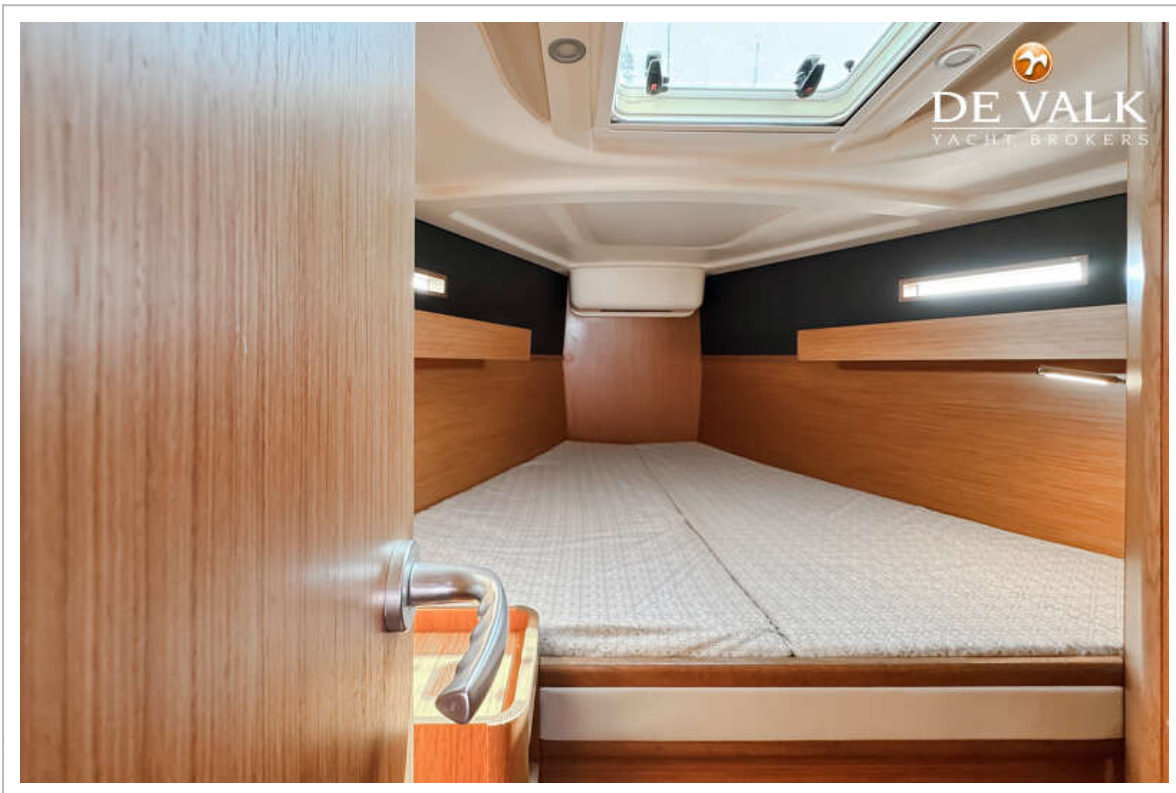
DEHLER 42 C



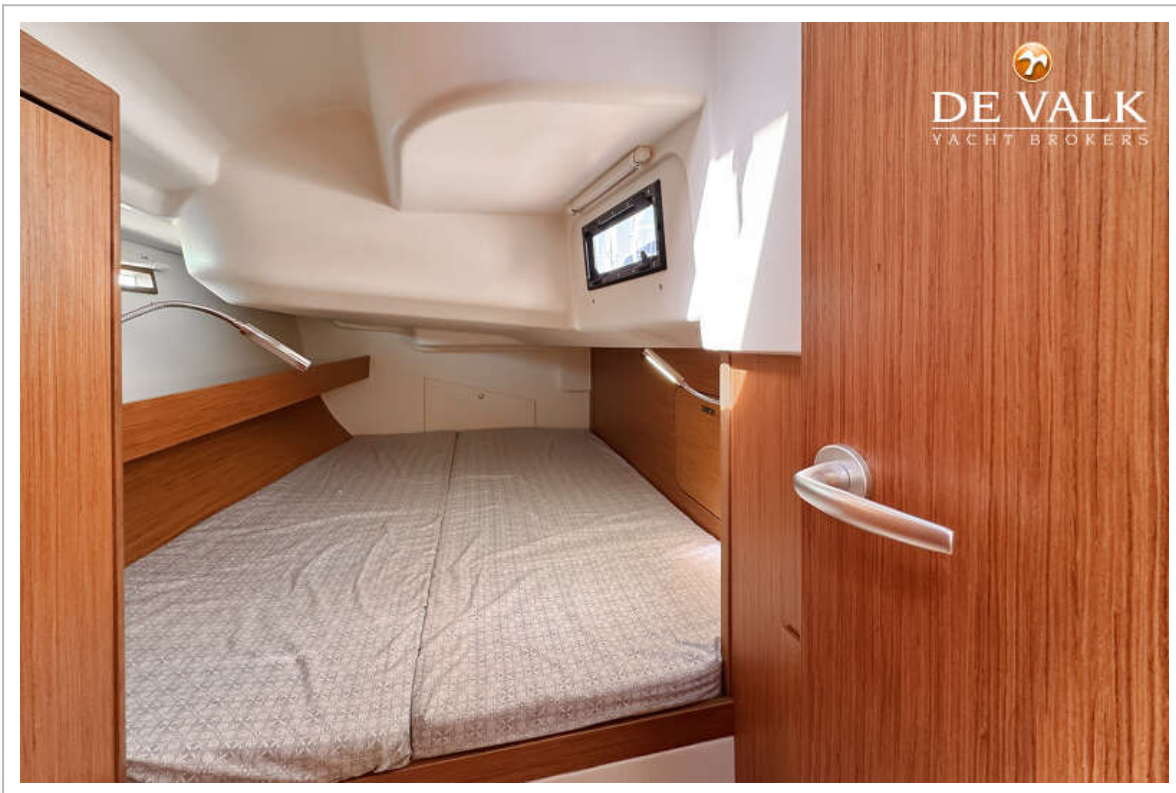
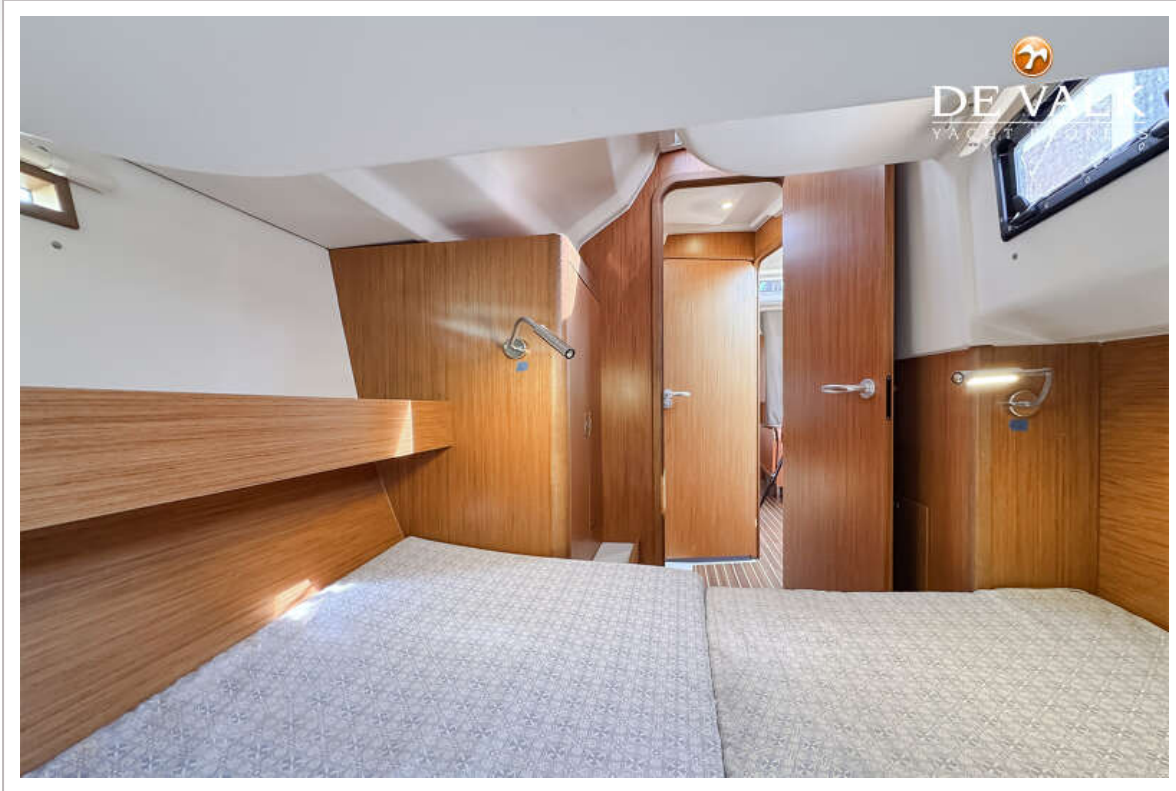
DEHLER 42 C



DEHLER 42 C



DEHLER 42 C



DEHLER 42 C

